

Figure 3: Hut Valley 1980–2000



Hut Valley 1980. Low grassy turf and scattered club sedge.
Turf maintained by rabbits.



Hut Valley 1985. Dense sward of low kanuka scrub.



Hut Valley 1988. Dense kanuka scrub.



Hut Valley 2000. Dense tall kanuka scrub.

Figure 4: Photopoint 1—Duneland at Te Ratahi (McEwan’s Bay), 1979–2002



1979



1988



1990



1996



2001



2002

**Figure 5: Photopoint 2—Eastern Side of Motu Hara (Main Summit),
1966–2002**

**Major changes from grassland to pohutukawa
treeland and then to pohutukawa forest.**



1966



1990



1996



2001



Figure 6: Photopoint 3—Eastern end of island, adjacent to Te Ratahi (McEwan’s Bay), 1955–2002
Major change from grassland to dense pohutukawa forest.



1955



1988



1990



1996



2001



2002

Figure 7: Photopoint 8—Hut Valley, 1955–2002
Change from grassland to kanuka forest.



1955



1988



1990



1996



2001



2002

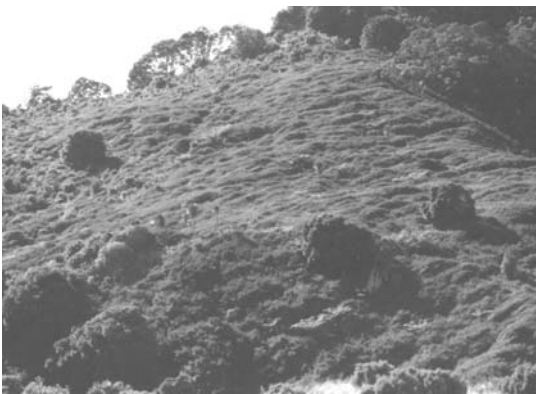
Figure 8: Photopoint 9E—Lower southern slopes of Raetihi (Pa Hill), 1952–2002



1952



1990



1996



2001



2002

Figure 9: Photopoint 10A—Southern slopes of Motu Hara (Main Summit), 1964–2002



1964



1990



1996



2001



2002

Figure 10: Photopoint 11—Saddle at the head of Onepu (Sulphur Bay) Valley, 1955–2002
Change from grassland to dense windshorn kanuka scrub.



1955



1988



1990



1996



2001



2002

Figure 11: Photopoint 13—Head of Hut Valley, 1990–2002
Change from grassland to pohutukawa treeland and forest.



1990



1996



2001



2002

**Figure 12: Photopoint HH1—lower southern slopes of Raetihi (Pa Hill),
1990–2002**

**Vegetation has changed from grassland to pohutukawa-kanuka/grassland to
pohutukawa forest and treeland.**



1990



1996



2001



2002

Figure 13: Photopoint 14—Southern and western slopes of Motu Hara (Main Summit), 1955–2001



1955



1988



1990



1996



2001

Figure 14: Photopoint 15—Head of Hut Valley, eastern side, 1990–2002



1990



1996



2001



2002

Figure 15: Photopoint 16—Dunes and flat land adjacent to Oneroa (Boulder Bay), 1955–2002



1955



1990



1996



2001



2002