



Photo 9: Hoisting whim spindle.



Photo 10: Whim spindle in mullock waste by the upper terminal of the aerial cableway.

Photo 11: Wooden box in corner of boiler room.



Photo 12 (below): Layout of piles of engine house (marked by white flashes) and the brick wall alongside flue (behind figure).



Photo 13:
"Basket" in
corner of
boiler
room.

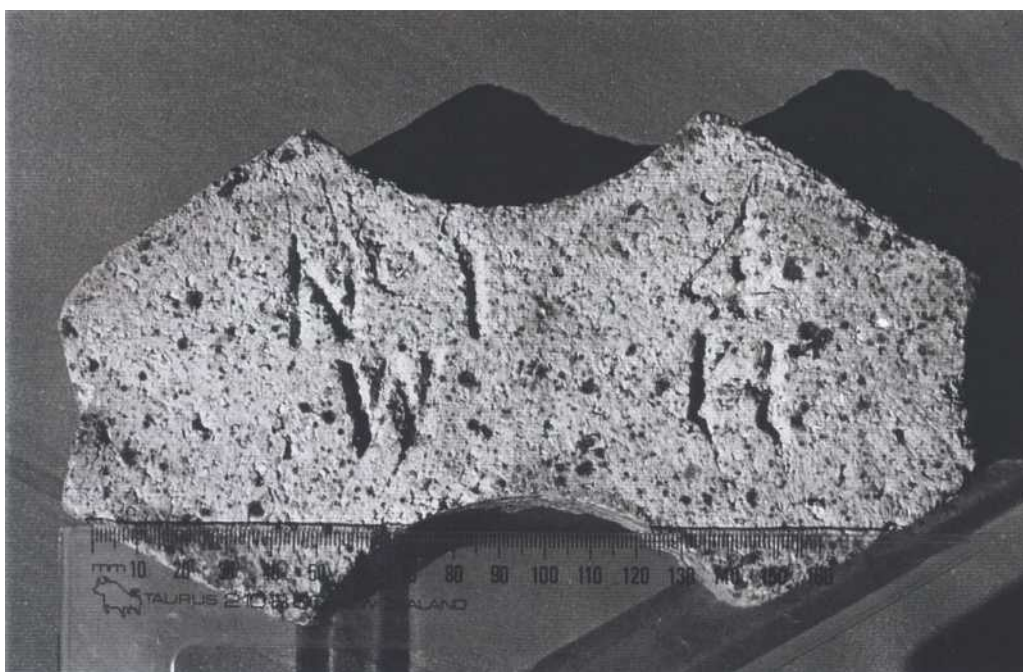
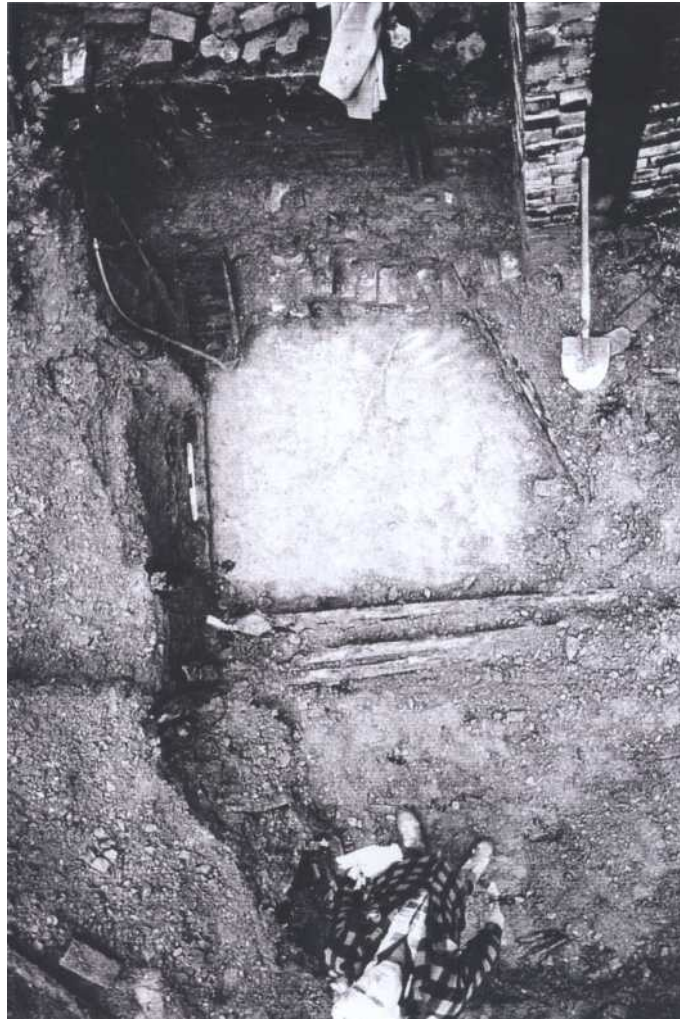


Photo 14: Fire-brick "spacer".