

Figure 5: "Basket" found in boiler room.

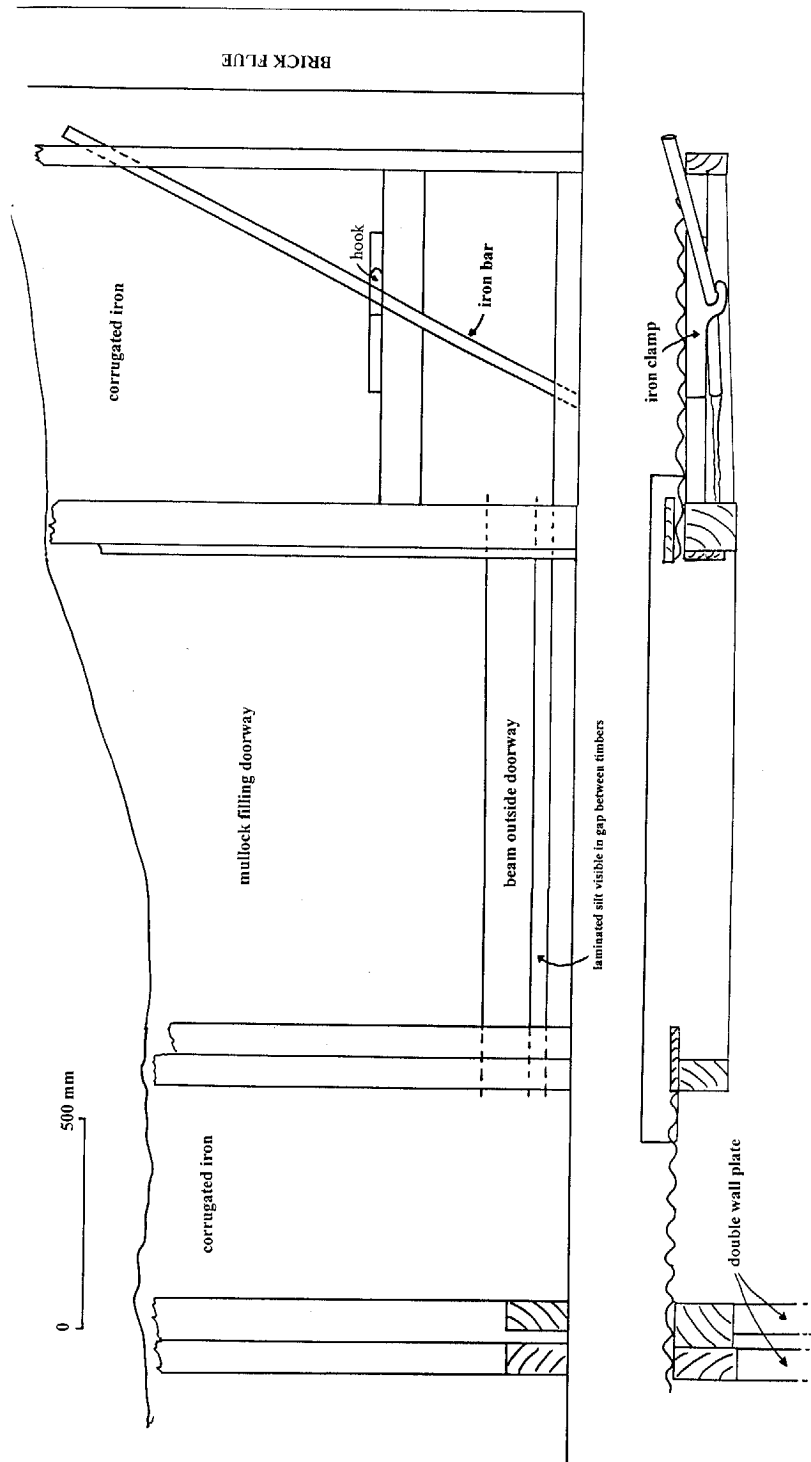


Figure 6: North wall of boiler room - interior elevation and plan,

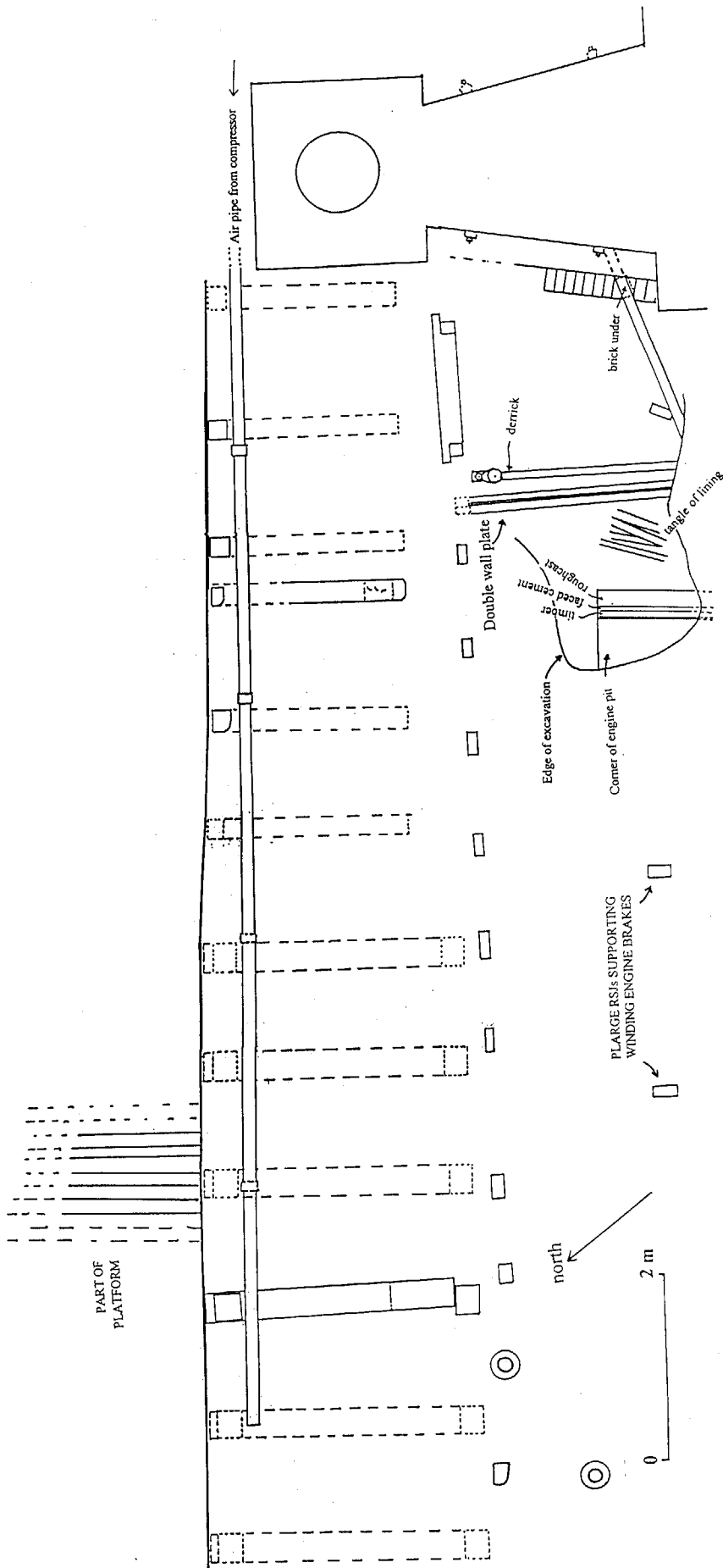


Figure 7: Northern side of main building.

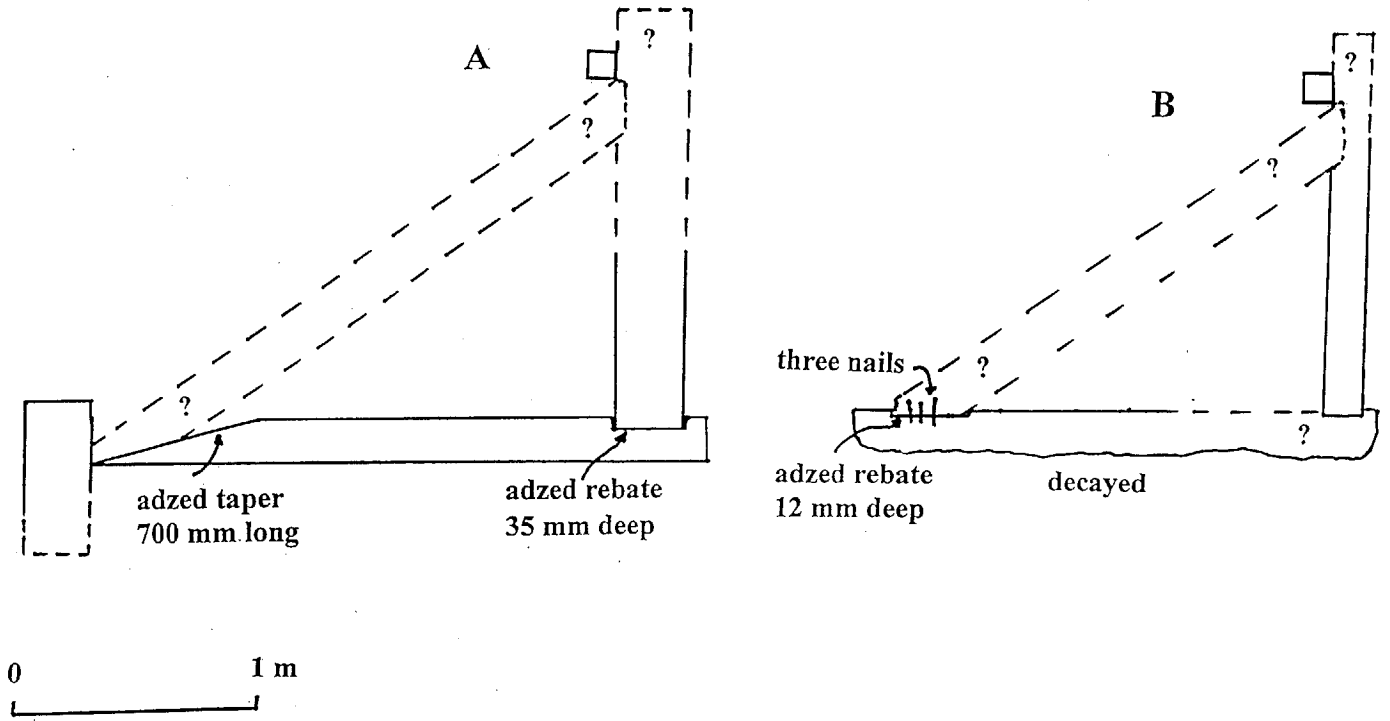


Figure 8: Construction of retaining wall trusses.

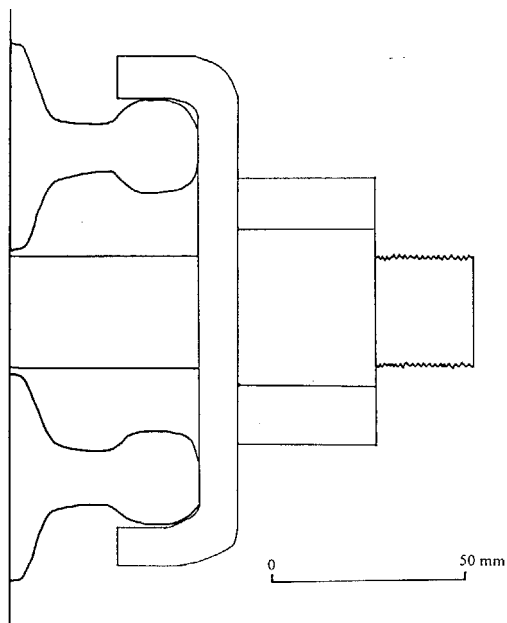


Figure 9: Detail of flue clamp,

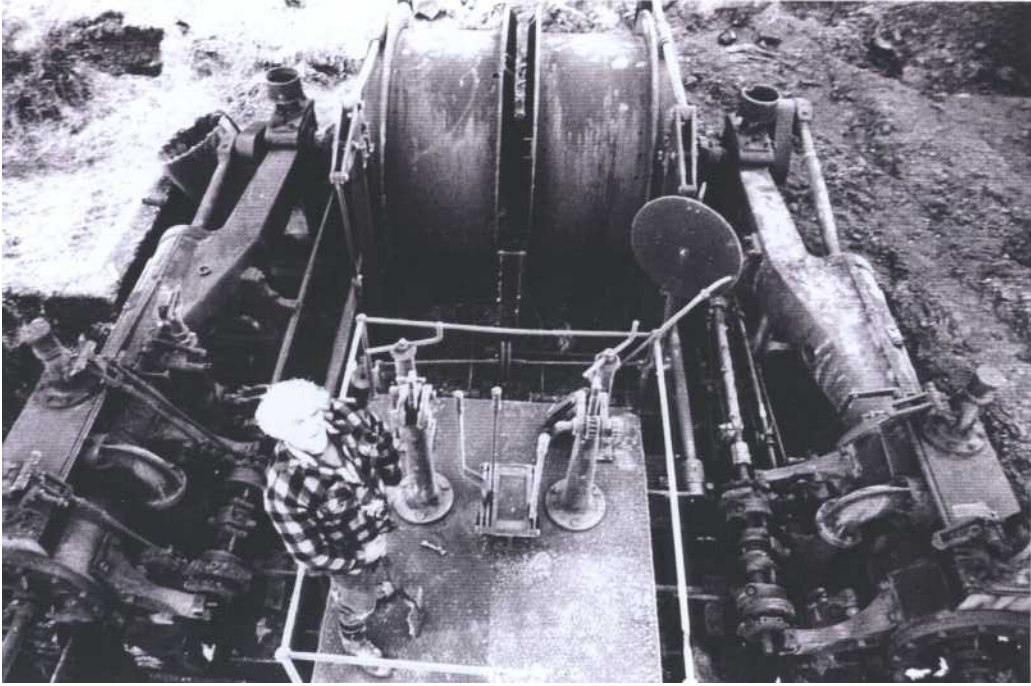


Photo 1: Winding engine at Big River mine.



Photo 2: Boiler at Big River mine.

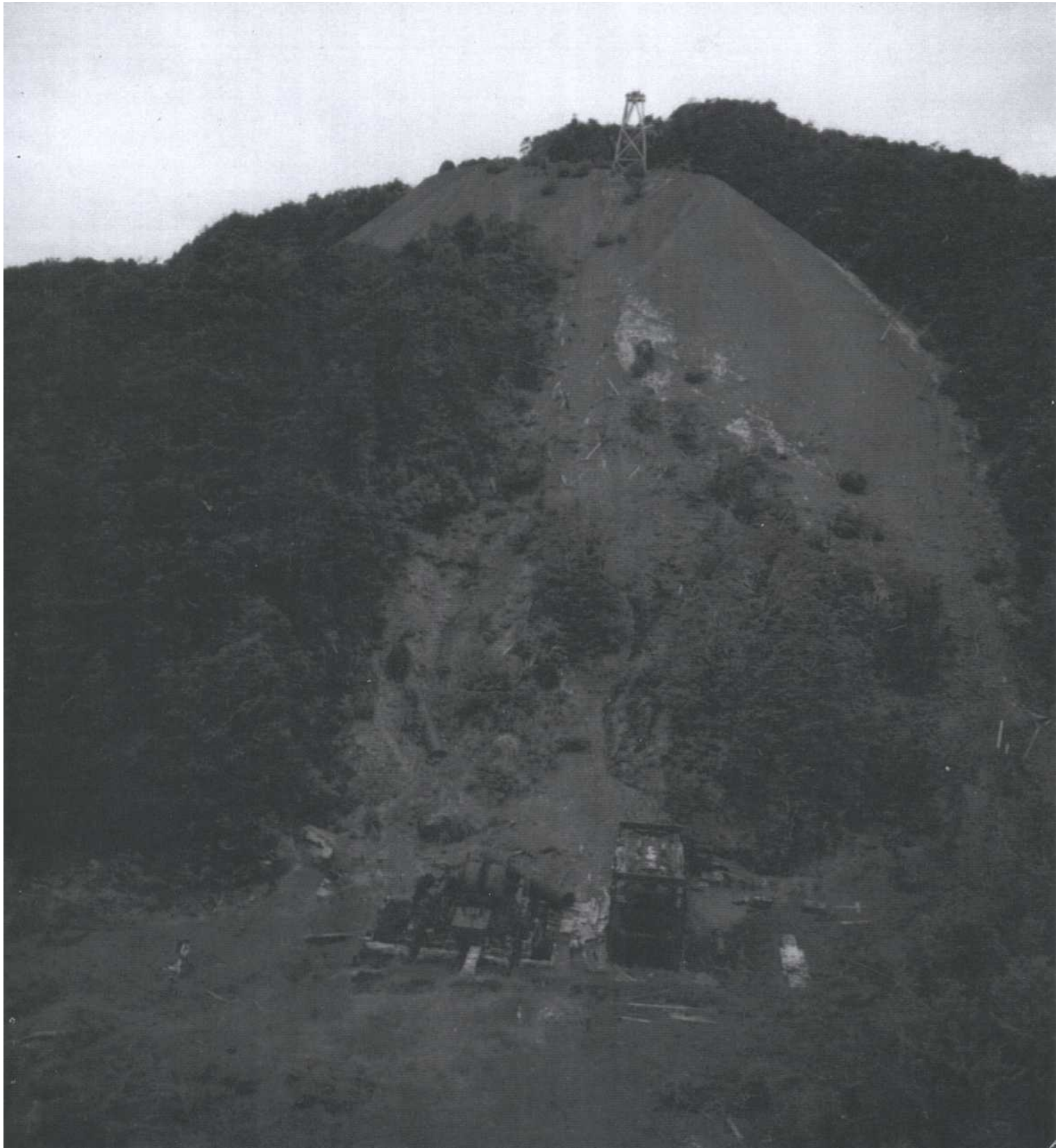


Photo 3: Helicopter view of poppet head, winding engine, mullock heap and boiler stack.