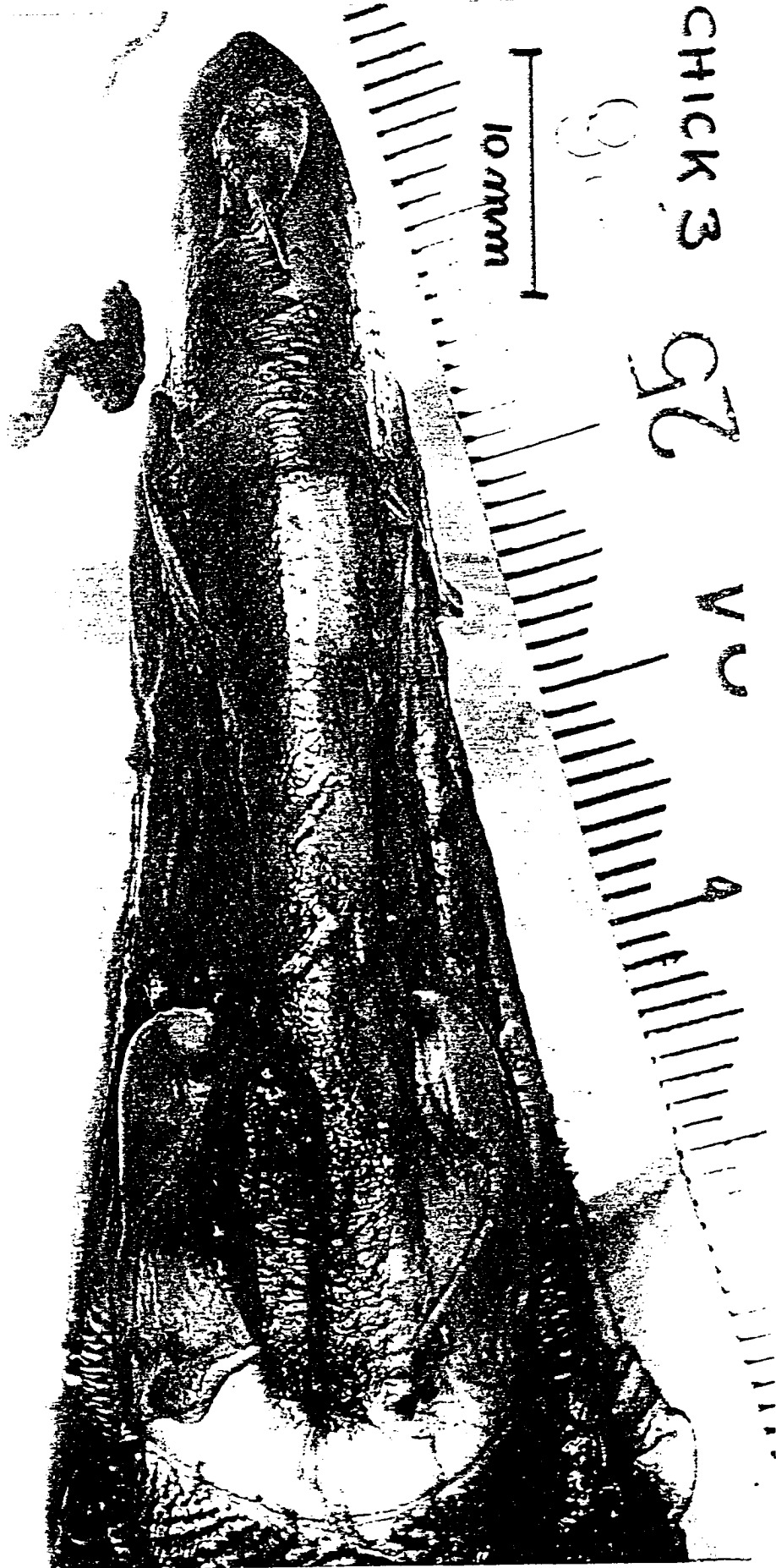


Analysis of the parallel rip marks on the hill: summary

CHICK 2:

left side of the bill:	EI	12.10	=>	ferret
	AC	5.68	=>	stoat
	FJ	9.98	=>	ferret
	KL	5.66	=>	stoat
	BD	5.34	=>	stoat
	JK	4.50	=>	stoat
	AD	8.00	=>	stoat
right side of the bill:	LM	5.39	=>	stoat
	GH	4.97	=>	stoat
	AF	6.82	=>	stoat
	BD	5.67	=>	stoat
	JN	14.67	=>	cat
	CF	10.86	=>	ferret
	LN	8.10	=>	stoat
cross-over:	llrF	11.87	=>	ferret

TOP VIEW OF THE BILL



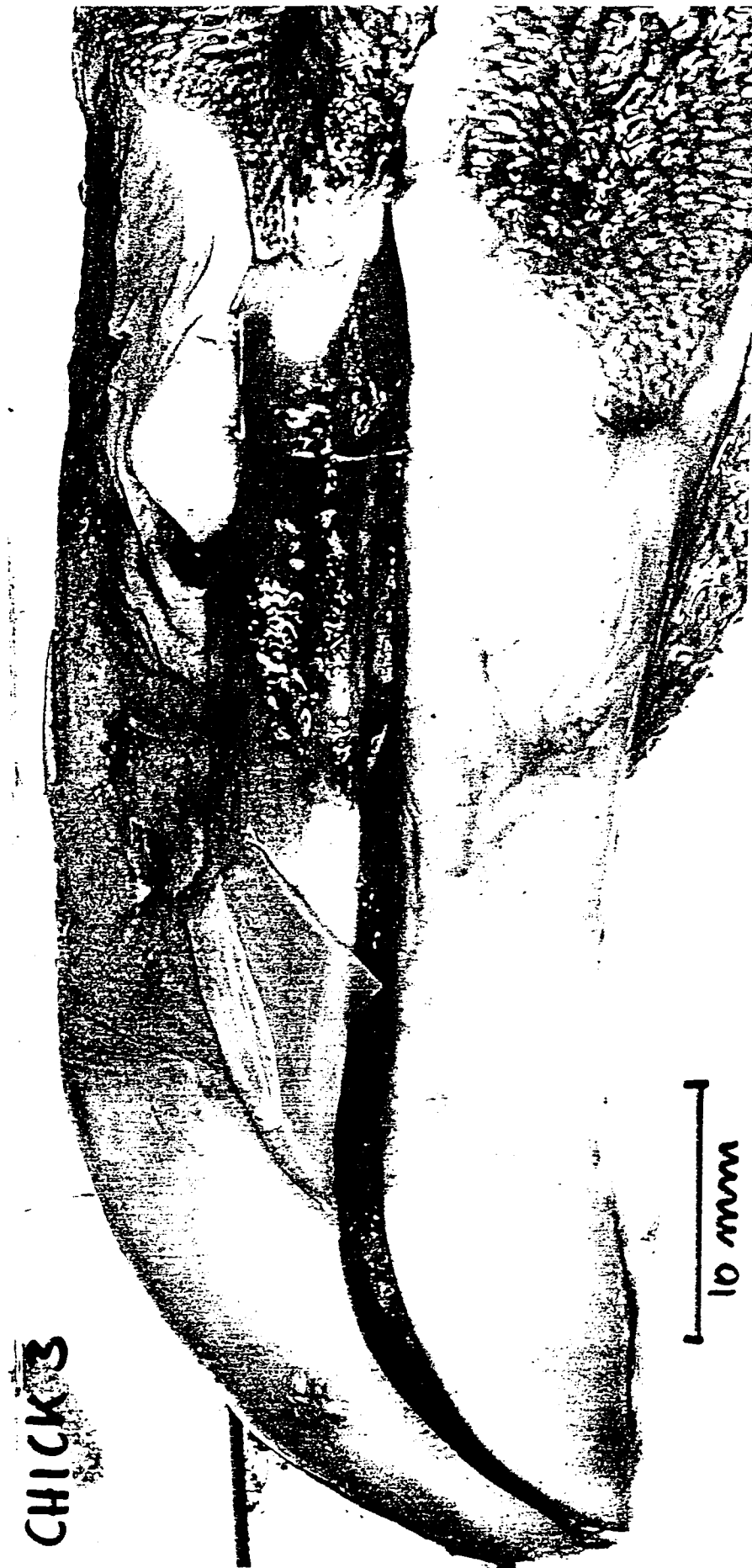
CHICK 3

92

10 mm

CHICK 3

LEFT SIDE OF THE BILL



CHICK 3

10 mm

CHICK 3

RIGHT SIDE OF THE BILL



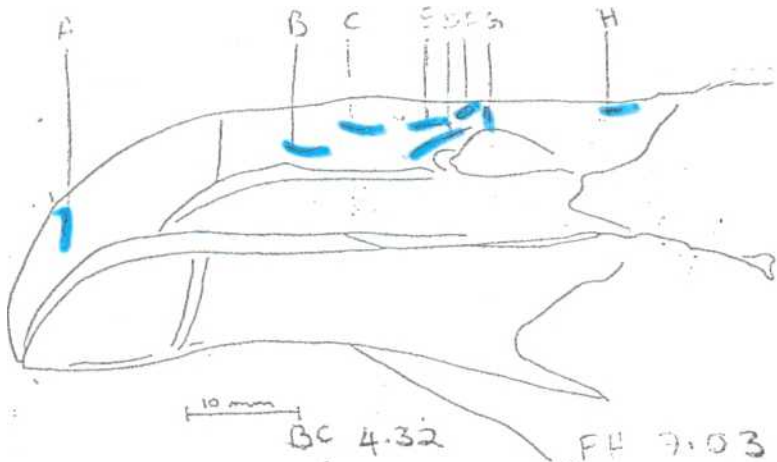
Analysis of the parallel rip marks on the bill: summary

CHICK 3:

left side of the bill:	BC	4.32	=>	stoat
	FH	7.03	=>	stoat
	EC	7.34	=>	stoat
	BE	11.38	=>	ferret
right side of the bill:	de	4.00	=>	stoat
	fh	5.58	=>	stoat
	df	4.00	=>	stoat
	ge	5.14	=>	stoat
	hf	5.58	=>	stoat
	eb	15.70	=>	cat
	ad	19.96	=>	cat
	cross-over:	iH	15.02	=>
aA		6.43	=>	stoat
iF		6.85	=>	stoat

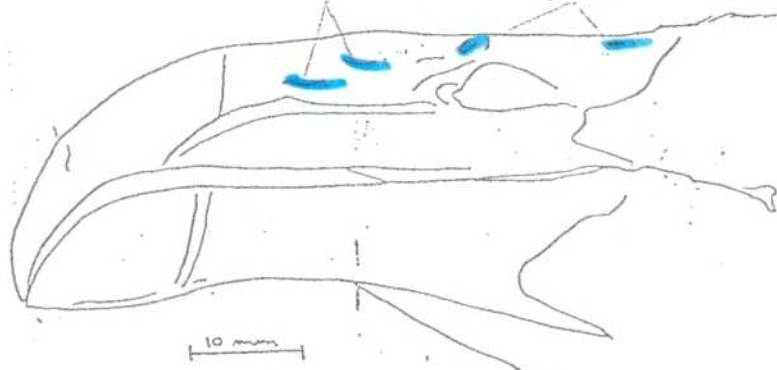
CHICK 3

LEFT SIDE OF THE BILL



BC 4.32 FH 7.03

BC 4.32 => stoat
FH 7.03 => stoat



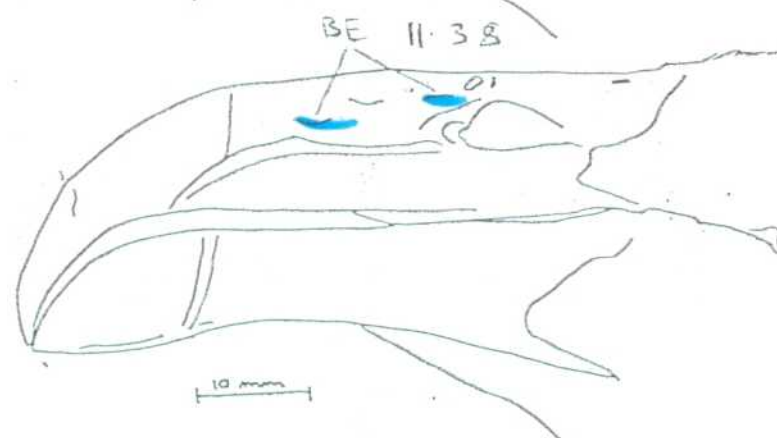
EC 7.34

EC 7.34 => stoat



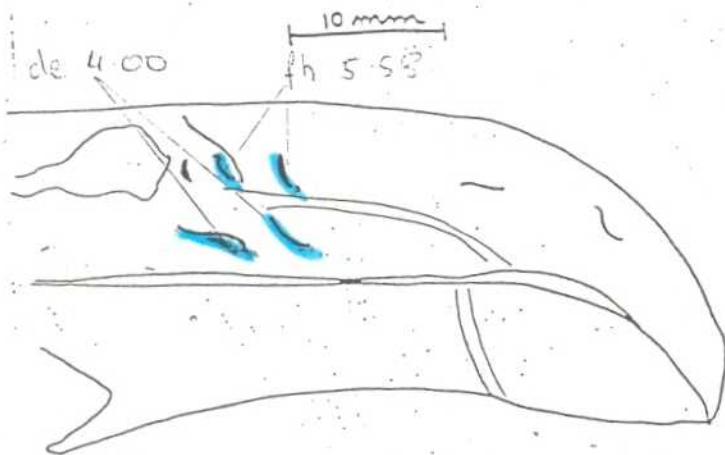
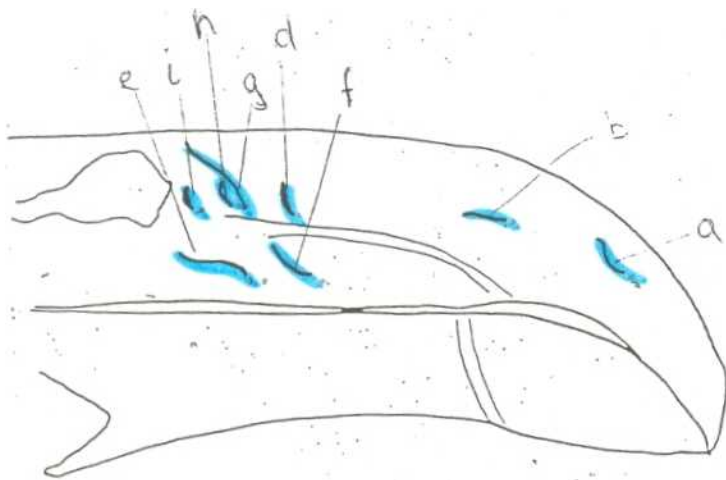
BE 11.38

BE 11.38 => ferret

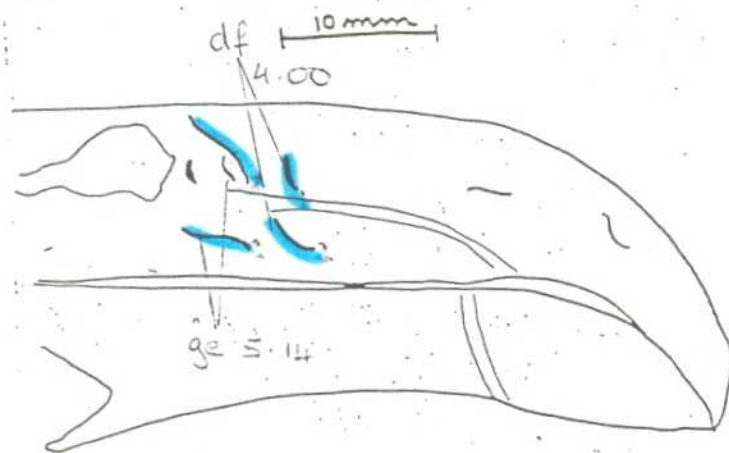


CHICK 3

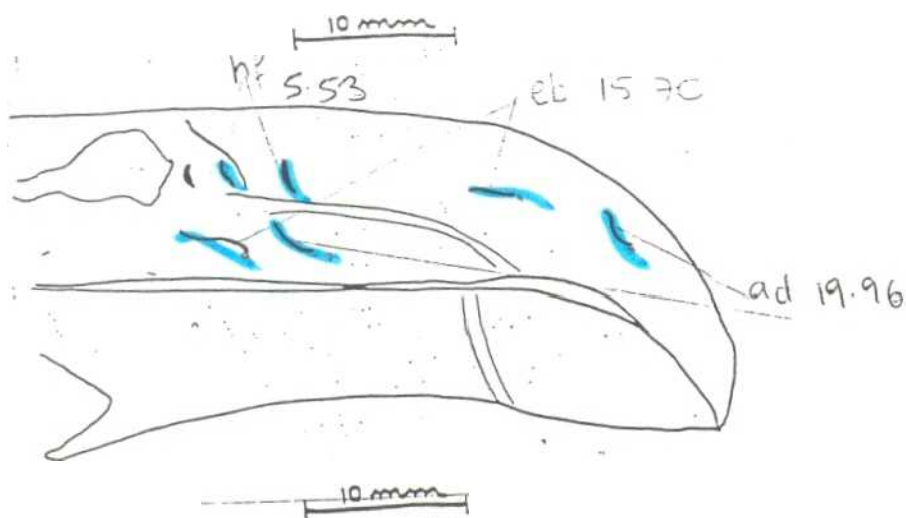
RIGHT SIDE OF THE BILL



de 4.00 => stoat
fh 5.58 => stoat



df 4.00 => stoat
ge 5.14 => stoat



hf 5.58 => stoat
eb 15.70 => cat
ad 19.96 => cat