

Figure 4 Bridges between Middlemarch and Ranfurly.

Top left: The trestle bridge over Heeneys Creek.

Top right: The masonry and lattice girder bridge over Six Mile Creek.

Lower left: the Capburn bridge with basalt piers all brought to course. These may be the largest brought-to-course basalt structures in Otago.

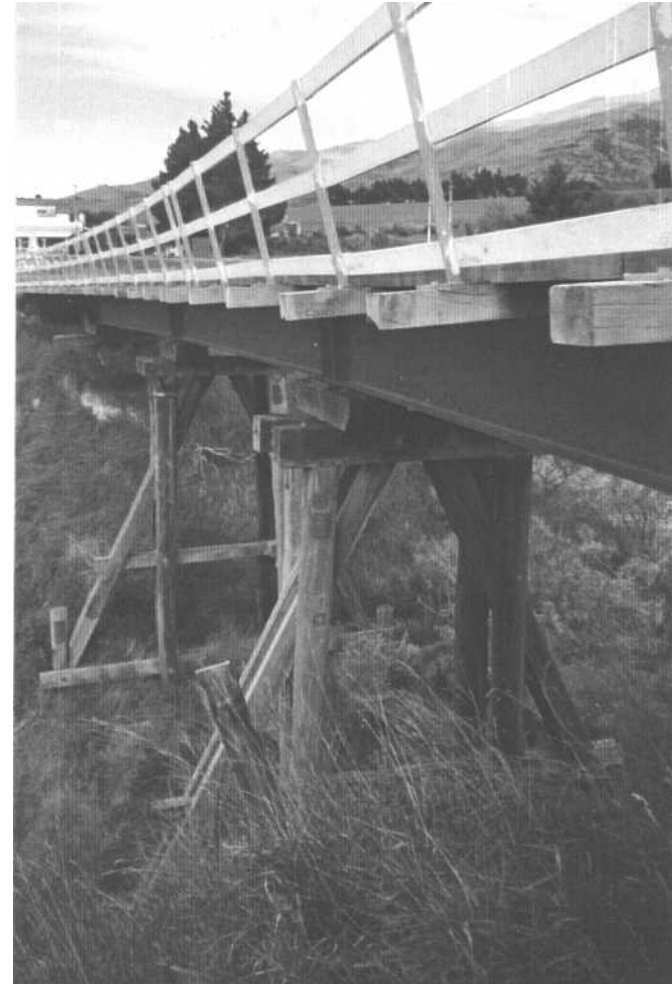
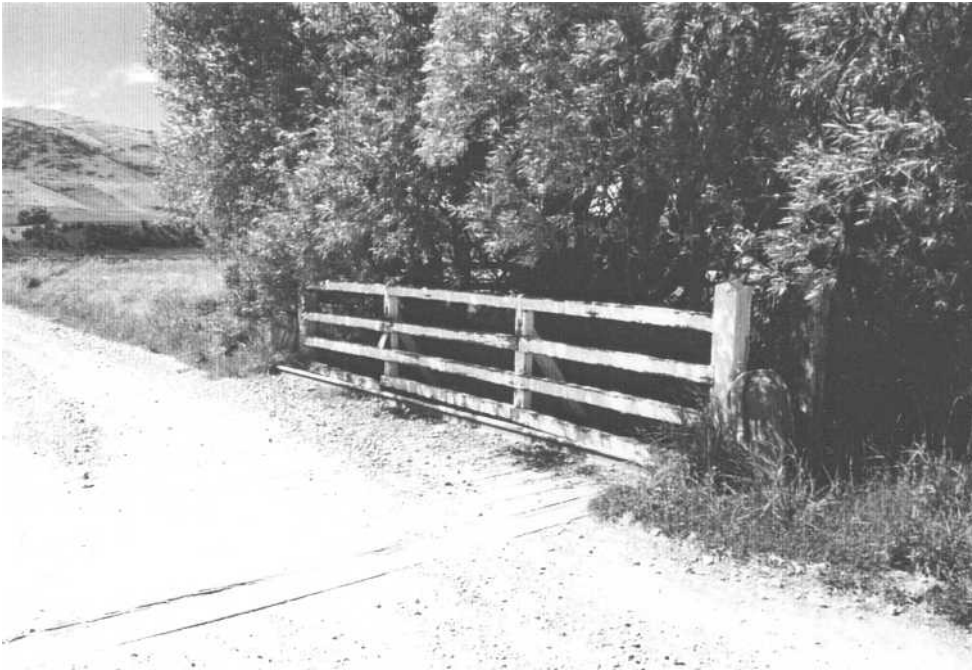


Figure 4a. Some examples of Railway style railings
Top left: a side bridge at Ida Valley.
Top right: Hyde township bridge showing railings
and doubled up piles and raker braces.
Lower left: Manuherikia No 1 bridge (No-70), the longest
bridge on the trail, showing its concrete piers and metal railings.