

Figure 2 Examples of masonry - wholly, partly and not brought to course.
Top left: the schist masonry abutments of the Poolburn viaduct fully brought to course
Top right: the basalt masonry of the Dunedin railway station partly brought to course.
Bottom left: the Geology building, University of Otago, with a sandstone foundation brought to course and basalt wall partly brought to course.
Bottom right: the shearers' quarters at Taieri Lake station rubble built and not brought to course.

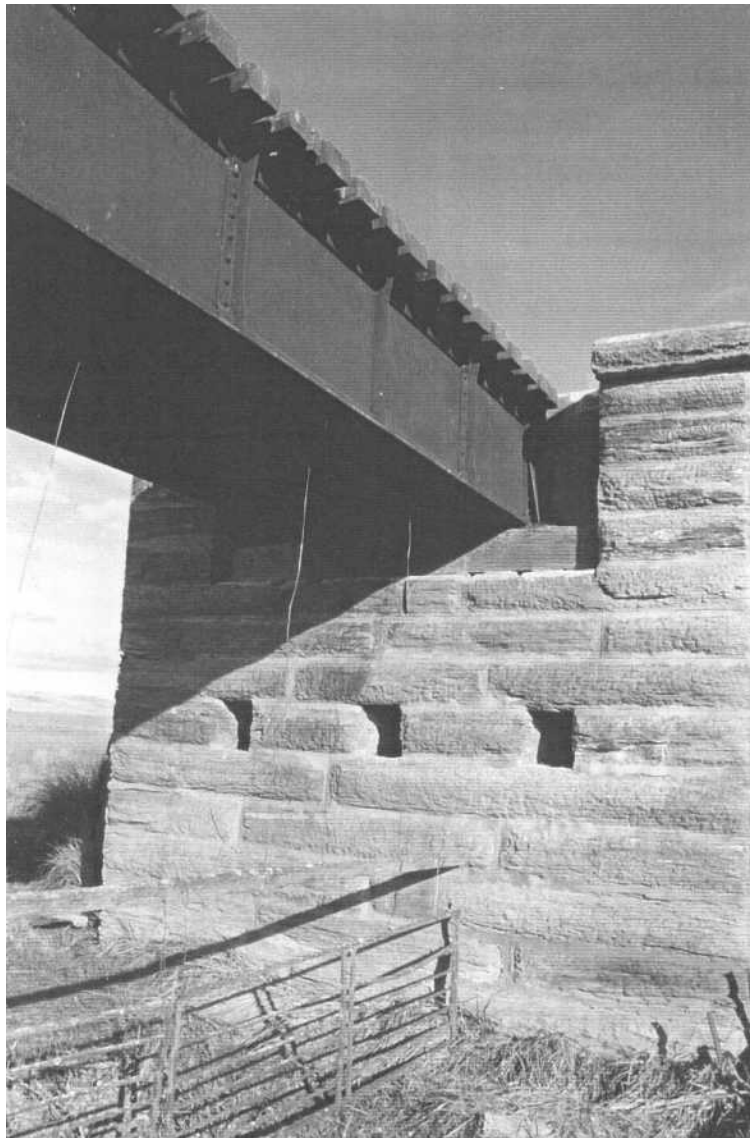


Figure 3 Two modest bridges on the Strath Taieri, with fully brought to course schist abutments on the line north of Pugh Road, Bridge 41 above and Bridge 40 below.