

# Tahr Control Operational Plan: 1 September 2019 to 30 June 2020

## Purpose:

The purpose of this operational control plan is to describe the location, timing and extent of Himalayan tahr control undertaken by different contributors over the period 1 September 2019 – 30 June 2020.

## Context & Priorities

Context: This is a transitional control plan that puts in place steps towards reducing tahr populations to the densities required under the Himalayan Tahr Control Plan 1993 (HTCP) while a longer-term operational control plan is developed over the 2019/2020 year.

Priority this year is to:

- Control the geographical spread of tahr from the feral range with operations focused on the buffer areas north and south of the tahr feral range;
- Move Westland Tai Poutini and Aoraki / Mount Cook National Parks towards zero tahr density – further control in National Park Management Units;
- Maximise the efficacy of reducing the tahr population from recreational guided hunting, and the commercial recovery of tahr;

to bring the population towards levels in the HTCP to protect natural values. With a downward population trend established, targets for future years can be refined and developed.

## Scope:

**Included:** This document covers the control of tahr on public conservation land in its legally defined feral range from 1 September 2019 to 30 June 2020.

**Excluded:** This document does not cover:

- Official tahr control in the Northern and Southern Exclusion Zones and elsewhere outside the feral range;
- Tahr management on land of other tenures (e.g. Crown Pastoral Lease and private land);
- Research and monitoring relating to tahr;
- Management of tahr beyond 30 June 2020;
- Tahr farming.

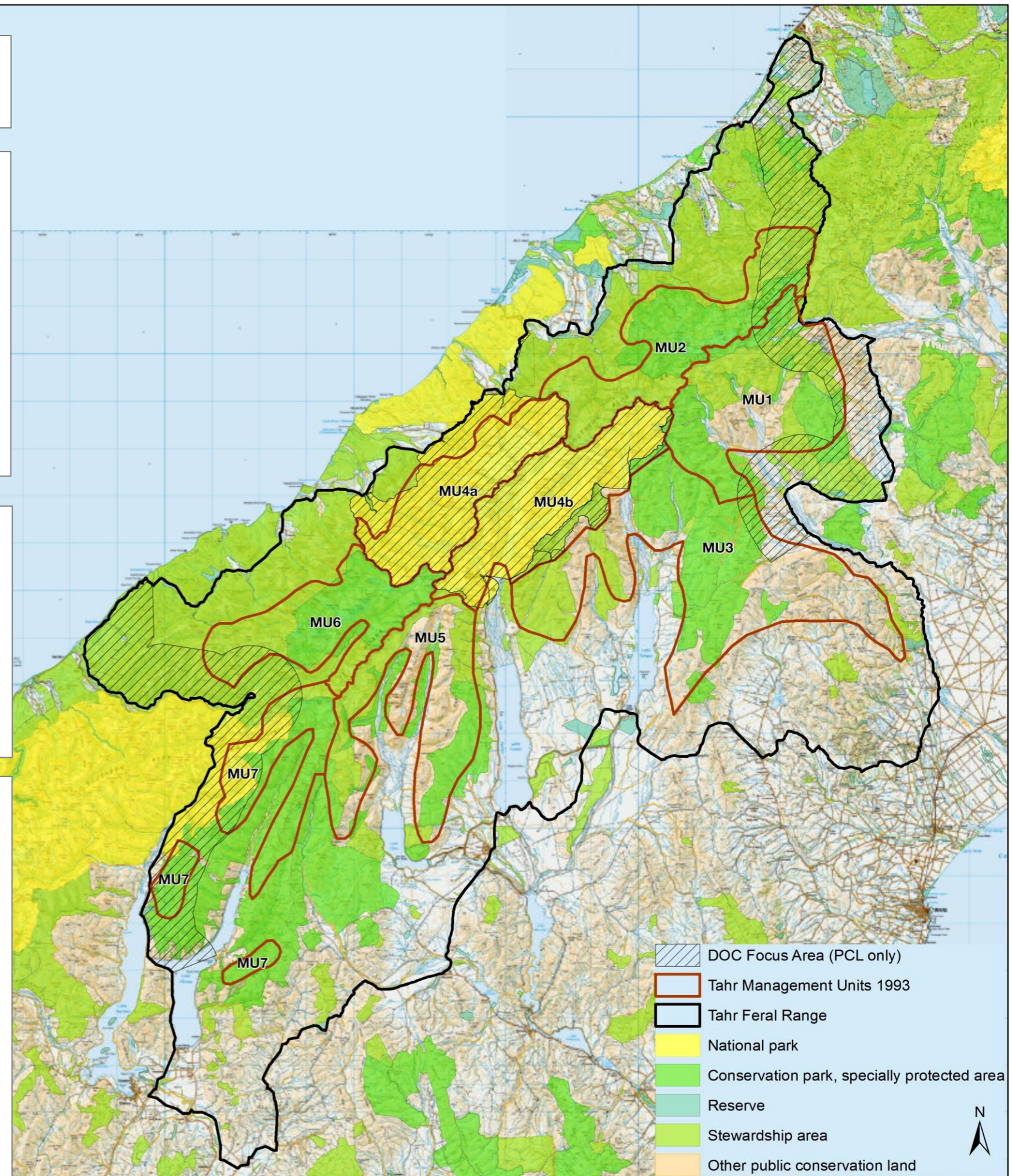
## Contributions to control:

A suite of contributors will deliver measures to control populations of tahr on public conservation land within the feral range.

- Recreational hunting will contribute everywhere in the feral range with ballots and organised hunts. DOC will provide information on the location of bull tahr observed to enhance hunter effectiveness.
- Commercial Wild Animal Recovery Operators recovering females and juveniles may contribute to controlling tahr throughout the feral range, except in the months of May and June.
- Guided hunting will contribute to controlling tahr in areas permitted by their concessions.
- Aerially Assisted Trophy Hunting offset control (females and juveniles) will contribute to controlling tahr in September and October, as directed by DOC in areas of high tahr density (see overleaf).
- Official control funded by the Department of Conservation (females and juveniles) will contribute to controlling tahr in the National Parks as well as the buffers at the northern and southern ends of the feral range.

Note that bull tahr will not be targeted in WARO, AATH offsets, and official control.

We will collectively and collaboratively build our knowledge about how and where control has occurred over the ten months to assist planning for future years.



# Tahr Control Operational Plan: 1 September 2019 to 30 June 2020

Himalayan Thar Control Plan 1993					Tahr Control Operational Plan September 2019				
Priority order of Management Unit in Himalayan Thar Control Plan 1993	Intervention levels of tahr/km <sup>2</sup> & population size in Himalayan Thar Control Plan 1993	Control parameters in Himalayan Thar Control Plan 1993		Control priority in meeting Himalayan Thar Control Plan 1993 targets (Note: additional comments for each MU are in HTCP)	Intervention levels exceeded based on Ramsey & Forsyth (2018) Estimates of Himalayan Tahr Abundance	Approach:			
						Recreational hunting	Guided hunting	Wild Animal Recovery Operators (WARO) (maximum number of tahr to be determined)	Official control including contracts  (Constrained to period 1 September to 14 November)
I. Wills/Makarora/Hunter (Management Unit #7)	<1/km <sup>2</sup> and population of <100	Tahr densities not to exceed 5/km <sup>2</sup> for any localised area Female-kid groups to be restricted, especially in close proximity to unit boundaries, to 10 or less per group Commercial hunting where recreational hunting has been encouraged but failed to meet targets		Recreational hunting and commercial hunting; periodic official control as required.	—	Encourage hunters to look for, shoot, and report tahr hunted and seen	Ground hunting throughout this period. AATH control as per dates and locations in concession.	WARO 1 September 2019 – 30 April 2020.	Approximately 15 hours of search and control 1 September to 14 November adjacent to the feral range boundary (see map). Removing all tahr except identifiable males.
II. Landsborough (Management Unit #6)	1.5/km <sup>2</sup> and population of 900			Recreational hunting, guided hunting, and commercial hunting; official control as required.	✓	Encourage hunters to look for, shoot, and report tahr hunted and seen. Ballots in Wilderness Area	Ground hunting throughout this period. AATH control as per dates and locations in concession.	WARO 1 September 2019 – 30 April 2020.	AATH offsets. Approximately 5 hours of search and control between 1 September to 14 November adjacent to the feral range boundary (see map). Removing all tahr except identifiable males.
III. Aoraki/Mt Cook and Westland/Tai Poutini National Parks (Management Unit #4)	<1/km <sup>2</sup> and population of <500			Recreational hunting, guided hunting, and commercial hunting; official control as required.	✓	Encourage hunters to look for, shoot, and report tahr hunted and seen. Organised hunts where possible.	Ground hunting throughout this period. AATH control as per dates and locations in concession.	WARO 1 September 2019 – 30 April 2020.	Approximately 40 hours of search and control between 1 September to 14 November. Removing all tahr except identifiable males.
IV. South Whitcombe/Wanganui/Whataroa (Management Unit #2)	2.0/km <sup>2</sup> and population of 1,500			Recreational hunting; guided hunting; commercial recovery; official control adjacent to park boundaries as required.	✓	Encourage hunters to look for, shoot, and report tahr hunted and seen. Ballots in Wilderness Area	Ground hunting throughout this period. AATH control as per dates and locations in concession.	WARO 1 September 2019 – 30 April 2020.	Approximately 10 hours of search and control 1 September to 14 November adjacent to the feral range boundary (see map). Removing all tahr except identifiable males.
V. Ben Ohau (Management Unit #5)	2.5/km <sup>2</sup> and population of 1,800			Landowner control (on lease or private land); recreational hunting and guided hunting; commercial hunting; official control adjacent to park boundaries as required.	✓	Encourage hunters to look for, shoot, and report tahr hunted and seen.	Ground hunting throughout this period. AATH control as per dates and locations in concession.	WARO 1 September 2019 – 30 April 2020.	AATH offsets removing all tahr except identifiable males.
VI. South Rakaia/Rangitata (Management Unit #1)	2.5/km <sup>2</sup> and population of 2,000			Recreational hunting; guided hunting; commercial hunting; official control as required.	✓	Encourage hunters to look for, shoot, and report tahr hunted and seen.	Ground hunting throughout this period. AATH control as per dates and locations in concession.	WARO 1 September 2019 – 30 April 2020.	Approximately 10 hours of search and control between 1 September to 14 November adjacent to feral range boundary (see map). Removing all tahr except identifiable males.
VII. Gammack/Two Thumb (Management Unit #3)	2.0/km <sup>2</sup> and population of 3,000			Landowner control (on lease or private land); recreational hunting and guided hunting; commercial hunting; official control adjacent to park boundaries as required.	✓	Encourage hunters to look for, shoot, and report tahr hunted and seen.	Ground hunting throughout this period. AATH control as per dates and locations in concession.	WARO 1 September 2019 – 30 April 2020.	AATH offsets removing all tahr except identifiable males.