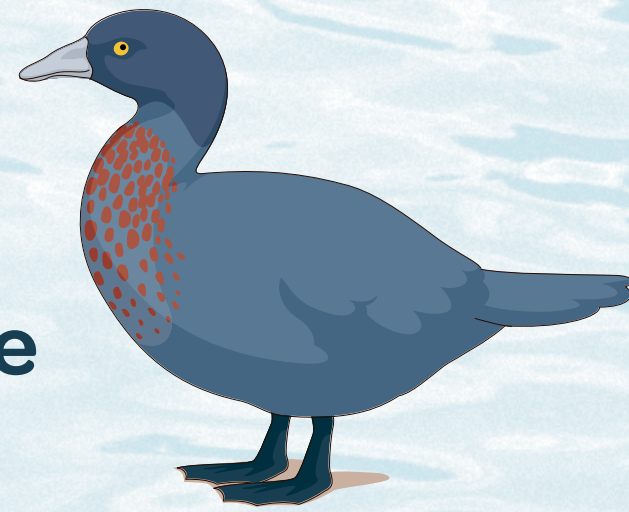


# Ko te WHIO

He aha tētehi manu e noho tata kore hāhā ana, ā kei runga a ia i te pūtea, te 10 Taara?



Ko te whio – he manu manawanui. Kei ngā awa teretere ēnei kātū manu e noho ana, ā ko te ingoa pākehā e mōhitotia whānuitia ana ko te blue duck (*Hymenolaimus malacorhynchos*), ā, he āhua 2, 500 noa iho ngā manu e toe ana.

Ko tēnei tētehi manu motuhake o Aotearoa, ā nō mai rānō tēnei manu. He taonga te manu nei, ā nā runga i āna urutaunga, kua ora a ia o roto i ngā wāhi mōrearea, i ngā wāhi uaua te noho mā te nuinga a ngā manu – pēnei i ngā awa teretere o Aotearoa.

I ngā wā o mua, e kitea ana te whio ki ngā wāhi katoa o Aotearoa engari i ēnei rangi kua rerekē. Kei ngā wāhi pēnei i Te Urewera, Te Puku o Te Ika, Te Mimi-o-Tūterakiwhānoa (Fiordland), Te Tai Hauāuru me ngā wāhi e pā tata atu rā ki Te Taihū o Te Waka (northern parts of the South Island). Nei ka kitea te manu nei, e mōhio ana koe, he wai mā tēnei wai.



## TAE HUNA

He kahurangi, he kiwikiwi hoki te tae o ngā huruhuru a te manu whio; koia rā te take i tapaina te ingoa, 'Blue Duck' e te Pākehā. Engari he urutaunga miharo anō tō te whio, anā ko te tae huna. Ka tauāwhitia te tae kia huna atu ai ki tō rātou nā wāhi, pēnei i te awa, ā ka huna atu i ngā riha rāwaho.



## NGUTU REREKĒ

He ngutu rerekē tō te manu whio, kāore he ritenga. He pango, he ngāwari ana ngutu hei ārai kia kaua e ngahoro kau noa, ā kia tūpana atu ai i runga i ngā toka i a ia e rapua ai te kai. He tātari tō te whio pērā i te tohorā kia taea ai e rātou te whakaputa i ngā tuaiwīkore ite wai.



## KAIRAPU

He manu kakama te whio, ā he waewae nui, he waewae huirapa ō te whio. Kei te hunga pīpī manu, ko te hunga kātahi anō ka whānau mai hoki ēnei momo waewae kia taea ai te kauhoe ki roto i ngā wai tāheke; ka noho whakamuri ōna waewae pērā i te amarara kia kaua e haere pōturi ai ki ro wai.



## TIRO WHAKAMUA

He karu motuhake, he karu kōwhai ō te whio, ā ka noho whakamua ana karu kia taea ai e ia te tiro whakamua. Engari he urutaunga miharo anō tō te whio, anā ko te tae huna. Ka tauāwhitia te tae kia huna atu ai ki tō rātou nā wāhi, pēnei i te awa, ā ka huna atu i ngā riha rāwaho.



## TE RAHI

1000 – 1300 karamu te rahi o ngā whio tāne – he āhua pērā te rahi o ngā pata e rua – he iti iho te rahi o ngā whio uha, he āhua 800 – 1000 karamu te rahi.



## TANA TANGI ME TANA ĀHUA

Ko tā te tangi a te whio tāne ko te 'whio' 'whio' – koia pū te pūtake o tōna ingoa. Ko tā te tangi a te whio uha ko te nguha.

I a koe e hikoi ana i ngā wāhi pū, tēnā pea e waimārie ana ki te kite i te whio; hei te ata, hei te maruahiahi koia te wā e tino kitea ana, arā te wā e tino kakama ana.

