

---

**WEST COAST *TAI POUTINI*  
CONSERVATION BOARD**

---

# **Annual Report**

**1 July 2017 to 30 June 2018**

Presented to the New Zealand Conservation Authority pursuant to Section 6(o) of the Conservation Act 1987





# West Coast *Tai Poutini* Conservation Board Annual Report 2017-2018

Presented to the New Zealand Conservation Authority  
pursuant to Section 6(O) of the Conservation Act 1987

ISSN 1172-918x (Print)

ISSN 1179-2647 (Online)

**Front Cover Photo:** Tawaki penguins on the seacoast. South Westland December 2017  
Photographer: Gerry McSweeney

Published by

West Coast *Tai Poutini* Conservation Board

c/- Department of Conservation

Private Bag 701

Hokitika 7842



## Contents

1. Message from the Chair, Mike Legge.....	1
2. Introduction .....	3
3. Annual Work Plan.....	3
4. West Coast <i>Tai Poutini</i> Region.....	4
5. Board Membership.....	6
5.1 Members Profiles .....	6
6. Meetings.....	8
6.1 Board Meetings .....	8
6.2 Attendance.....	8
6.3 Field Trips.....	9
6.4 Community and DOC Involvement in Board Meetings.....	11
7. Board Committees and Representation.....	12
8. Board Functions Under Section 6m of the Conservation Act 1987.....	13
9. Powers of the Board under Section 6n of the Conservation Act 1987 .....	13
10. Responsibilities under other Sections of the Conservation Act 1987.....	14
11. Board Functions under the National Parks Act 1980.....	14
12. Liaison.....	15
12.1 Other Conservation Boards and New Zealand Conservation Authority.....	15
12.2 Community .....	15
12.3 District and Regional Councils .....	15
12.4 Iwi.....	15
Appendix I – West Coast <i>Tai Poutini</i> Annual Work Plan .....	16

## 1. Message from the Chair, Mike Legge

The year has been dominated with the Westland *Tai Poutini* National Park Management Plan Review. A more complex national park plan than the previous Paparoa National Park Review, with tourism, climate change and biodiversity important aspects to consider as well as ensuring due consideration was given to all cultural aspects of the evolving draft. National park planning is only achieved by teamwork and I am extremely grateful to Makaawhio, especially Tim Rochford and Hinerangi Barr for their work and input to the draft plan. Strong leadership from both Makaawhio and Ngāi Tahu was significant in establishing the cultural narrative for the draft plan. The detailed and openness of discussions and policy formation for the Plan with the Department of Conservation staff, in particular Mark Davies (Director operations), Wayne Costello (Franz Josef), Jo Easterbrook (Planner) and Joy Comrie (Statutory Manager) is gratefully acknowledged.

Alongside the national park management plan, the Board continues to keep informed on issues and developments relating to the West Coast, as well as maintaining a watching brief on cultural and historic sites. The Board Chair had two meetings during the year with the combined Otago and Southland Conservation Boards to discuss common issues relating to tourism, access and national park planning. In April the West Coast *Tai Poutini* Conservation Board and the Nelson Marlborough Conservation Board held a joint meeting in Karamea, and amongst a number of issues discussed was the potential impact of tourism on the Oparara Arches area.

Over the year the Board continued to hold meetings in different West Coast locations with variable attendance by members of the public. A number of individuals and community groups gave presentations to the Board and the groups can be found in section 6.4 of this report. These meetings are essential to keep the Board up to date with local issues.

Maintaining contact with the New Zealand Conservation Authority (NZCA) is considered important for the function of the Board and it was pleasing to have NZCA representatives (Robyn Jebson and Gerry McSweeney) attend Board meetings during the year. The Board Chairs meeting with the NZCA continues to be a valuable meeting.

Other significant activities for the Board during the year related to pest management updates, discussions on weed control, Stewardship land considerations, the Mokihinui/Kahurangi National Park additions and input to local and regional development plans. A review of the concessions process and the relationship of the Resource Management Act were also initiated. The Board continued to be updated with relevant scientific publications especially relating to New Zealand conservation issues.

Finally, I would like to acknowledge the work the Board members have undertaken during the year, much of which is outside of the Board meeting times and in their own time. Conservation Boards could not function or be effective without a close working relationship with the Department of Conservation and I acknowledge both the work and

the interactions with the Board of all the Department's staff especially Mark Davies (Operations Director), Joy Comrie (Statutory Manager), Philippa Freeman (Board Support Officer) and Joy Cowan (temporary Board Support Officer) – Thank you for making 2017/18 a successful year.

This is my last Annual Report for the Board, as I was not reappointed for another term. I have greatly enjoyed my work with the Board, the public, Department and especially with Ngati Waewae, Makaawhio and Ngāi Tahu. We shared some special times together on both West Coast Maraes. For me there is much unfinished work that I would have liked to achieve relating to the direction and initiatives for the Board. I wish the future Board well and that all the forthcoming national park reviews go well, as well as the many issues requiring the Boards inputs and directions. As a final departing note the work of Conservation Boards is becoming increasingly complex and there are significant time demands, this may require some discussion on the functional role of Conservation Boards in the future.



Michael Legge (Dr)

Chair

West Coast *Tai Poutini* Conservation Board

## 2. Introduction

This is the *West Coast Tai Poutini* Annual Report as required under Section 6 of the Conservation Act 1987.

The *West Coast Tai Poutini* Conservation Board had 11 members for the 2017-2018 year appointed by the Minister of Conservation under the terms of the Conservation Act 1987. There was one new appointment to the Board – Keith Morfett and two re-appointments – Coraleen White and Mike Legge. Dr Mike Legge was elected as Chairperson and Rob Roney as Deputy Chairperson.

Conservation Boards are independent advisory bodies, established by statute. The *West Coast Tai Poutini* Conservation Board represents the community and offer interaction between communities and the Department of Conservation, within the area of jurisdiction of the Board.

The Board has several statutory roles under various Acts including:

- The recommendation of a West Coast Conservation Management Strategy (CMS) to the New Zealand Conservation Authority (NZCA) for approval
- Advising the Department of Conservation and the NZCA on how conservation management strategies and plans will be put into practice
- Reporting on the implementation of the CMS
- The approval of Conservation Management Plans
- The recommendation of National Park Management Plans to the NZCA for approval
- Advising the Department of Conservation and NZCA on conservation matters, and proposed changes to status of land of national and international significance
- Liaising with Fish and Game Council on conservation matters
- Carrying out other powers delegated by the Minister of Conservation, the Conservation Act or any other Act

Section 6(O) of the Conservation Act requires conservation boards to provide the NZCA with an annual report as soon as practical after 30 June each year. In recognition of this requirement the *West Coast Tai Poutini* Conservation Board submits this annual report.

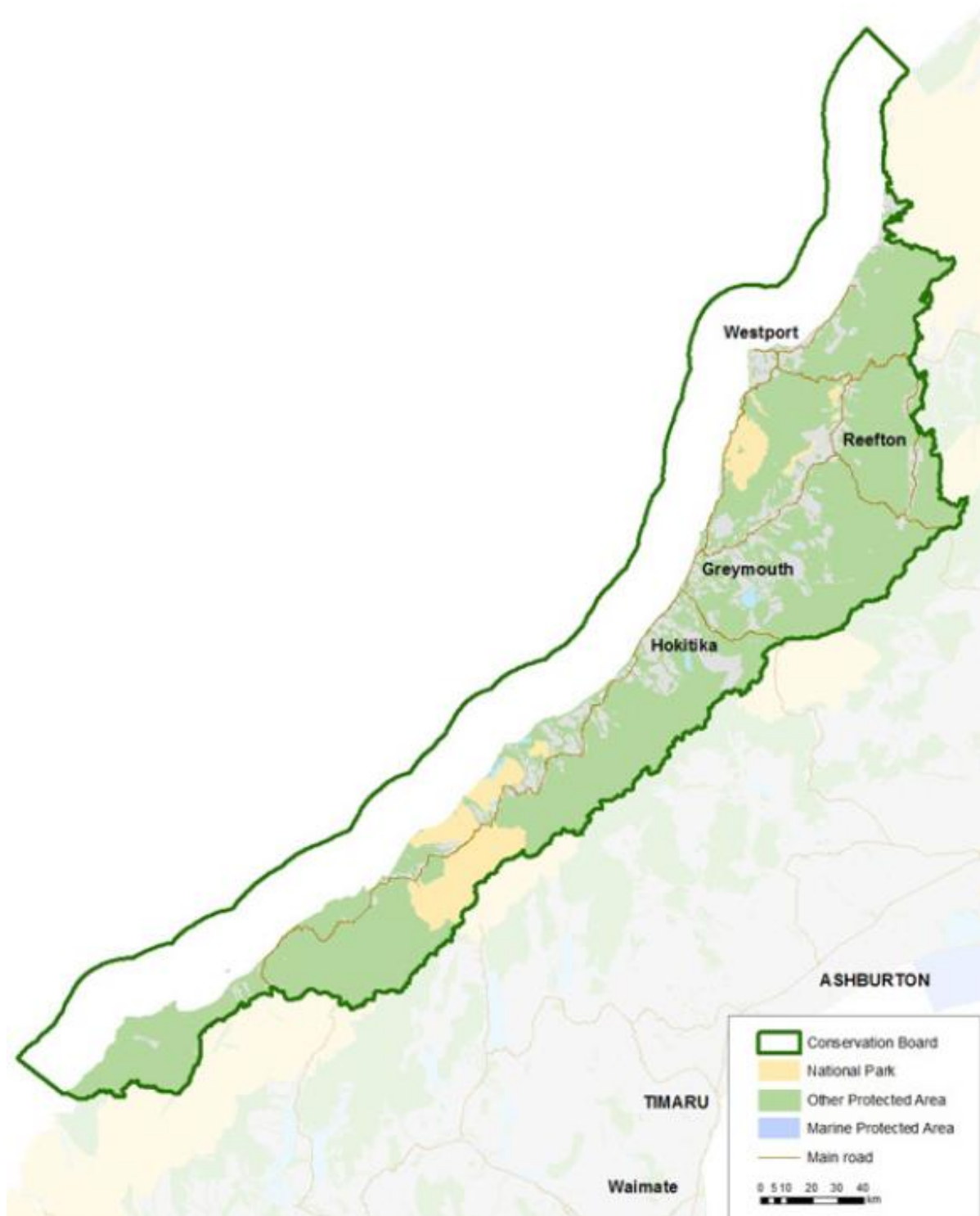
## 3. Annual Work Plan

Please refer to Appendix 1 for the full Board Annual Work Programme.



## 4. West Coast *Tai Poutini* Region

The West Coast *Tai Poutini* Conservation Board's area of jurisdiction covers the West Coast from north of Karamea south to Big Bay. The area also extends out to the 12-nautical mile limit with respect to coastal and marine issues, and out to the 200-nautical mile limit with respect to marine mammal issues.



Westland *Tai Poutini* National Park and Pararua National Park lie within the Boards' jurisdiction.

Approximately 25% of all public conservation land in New Zealand lie within the West Coast Region. The large number of issues which are of interest to the Board include:

- Ecosystem management and management of plant and animal species such as mistletoe, Wetland petrel/*taiko*, white heron/*kotuku*, blue duck/*whio*, rowi, Haast *tokoeke*, great spotted kiwi/*roa*, mohua and Powelliphanta species
- Management of recreational facilities
- Management of historic sites
- Concession activities, including those relating to recreation and tourism activities, grazing, industrial use, baches, filming, gravel extraction
- Mining and access arrangements
- Marine protection

The total area of the West Coast Region comprises of 1,913,000 ha. Of this total, approximately 84% (1,610,000 ha) is contained within the boundary of the West Coast *Tai Poutini* Conservation Board's area of jurisdiction.

#### Features of the Area:

- Paparua National Park – 39023 ha
- Westland *Tai Poutini* National Park – 131330 ha
- Victoria Conservation Park – 204675 ha
- 114 Scenic Reserves – 79405 ha
- 19 Historic Reserves – 12644 ha
- 92 Recreation Reserves – 402 ha
- 45 Ecological Areas – 216506 ha
- 21 Amenity Areas – 17098 ha
- 390 Stewardship Areas – 845383 ha
- 3 Wilderness Areas – 111602 ha
- Adjoins Kahurangi, Arthur's Pass, Aoraki/Mt Cook, Mt Aspiring and Fiordland National Parks
- It is an integral part of Te Wahipounamu – South West NZ World Heritage Area

## 5. Board Membership

There were 11 Board members for the reporting year appointed by the Minister of Conservation.

Two members whose terms of office expired on 30 June 2017 were reappointed one for a further 3-year term and the other for a further 1-year term. There was one new appointment.

Mike Legge was elected Chairperson and Rob Roney was elected Deputy Chairperson.

### 5.1 Members Profiles

**Dr Mike Legge (Chairperson)** was an Associate Professor (Biochemistry and Pathology) at the University of Otago until 2011, and now holds an honorary role. He has extensive experience in environmental management and policy development, and sound understanding of public processes and public participation in decision-making. He is a life sciences consultant and QEII covenant holder. His outdoor recreation interests are tramping, track work, hut warden, revegetation, photography, bird census, and marine conservation.

**Paulette Birchfield** is Engineering Officer at the West Coast Regional Council. She has qualifications and practical knowledge and experience in environmental engineering, resource management skills, and knowledge of environmental principles, problems and management. She is a keen advocate for use of the conservation estate for recreational use. Her outdoor recreation interests are trail and mountain running, multisport, and mountain-biking.

**Rauhine Coakley** is nominated by Te Rūnanga o Ngāti Waewae. She is currently employed as a Whānau Ora Navigator for Poutini Waiora, and has worked in the health sector for the past 7 years. She has also worked in the tourism and hospitality sections for several years. She has a passion for conservation and has a desire to learn more about conservation, and the *Tai Poutini* and conservation issues that affect the people and environment.

**Dan Moloney** has recently retired as a school principal. He is familiar with planning and analysis of data, and has good communication skills and cultural awareness. He is a keen tramper, and West Coast historian and photographer. He is involved in community organisations, and understands the proposed marine reserves and conservation issues on the West Coast. His outdoor recreation interests are tramping, West Coast history, photography, and reading.

**Rob Roney (Deputy Chair)** was the Head of the Science Department at Greymouth High School, and an ex Chairperson of Fish and Game West Coast Council of which he is currently a member, and former Chairperson of the Fish and Game New Zealand Council. He has worked with UNESCO at several World Heritage youth fora. He has expertise in communication, dealing with groups, planning and analysis, and health and safety. He has sound governance skills, and sound understanding of public processes,

strategic planning, legislation and meeting procedure. His outdoor recreation interests are tramping, climbing, back country hunting, fly fishing, and rafting.

**Terry Scott** is a nominee of Te Rūnanga o Ngāi Tahu. He is retired and has thirty-four years Fire Service experience, involving Fire Command and Control at a senior level (QSJM). He is a former Dunedin City Councillor, and been a member of many committees in the local area. He is knowledgeable of local government and Department of Conservation processes and procedures. His outdoor recreation interests are fishing and tramping. He is of Ngāi Tahu iwi.

**John Taylor** owns Western Ventures, and is a strong advocate for conservation of industrial heritage. He is a past member of the community development board, and has governance, advocacy and relationship management skills. He is also a tutor in conservation-related legislation and health and safety. His outdoor recreation interests are tramping, mountaineering and exploring the New Zealand mining heritage sites (both on the surface and underground).

**Coraleen White** is a farmer, former Buller District Councillor and former Westport Issues Assistant to West Coast Tasman MP Chris Auchinvole. She has experience in governance roles, and in working with DOC staff to resolve constituent concerns. She helped prepare the Council's inaugural district plan, and participated in public hearings. She holds a QSM. Her outdoor recreation interests are walking and boating; especially in Westland *Tai Poutini* and Kahurangi National Parks.

**Barry Hughes** operates a kayak hire and guiding business with his partner on Okarito Lagoon in South Westland, and has spent the last nine years working in tourism guiding and management. He has tramped extensively throughout the Southern Alps, and enjoys, but is not that good at, climbing, hunting and mountain biking. He is a strong supporter of public recreation access and a keen interest in biodiversity, having volunteered on DOC projects focused on Tokoeka, Mohua, and less glamorous weed eradication.

**Francois Tumahai** is of Ngati Waewae and Ngati Whatua descent. He is the Chairman of Te Rūnanga o Ngati Waewae, Managing Director of Poutini Environmental and the General Manager of Waewae Pounamu. Francois brings over 20 years of management experience, 15 years governance experience and 8 years director experience to the Board.

**Dr Keith Morfett** is the Director of Clarke Creek Consultants Ltd and a Tutor in Emergency Management at the Tai Poutini Polytechnic. He has experience and qualifications in science/research and teaching. He has planning, and analysis skills developed through his research background and Search and Rescue (SAR) involvement. Keith has spent considerable time in National Parks, reserves and remote protected areas and has travelled internationally with a conservation focus.

## 6. Meetings

### 6.1. Board Meetings

The West Coast *Tai Poutini* Conservation Board held six Board meetings and four subcommittee meetings during the reporting period. Venues for the Board meetings are varied each year to ensure a wide coverage and enable members of the public in the district to attend meetings and access the Board.

#### Board Meetings

Date	Area
21 July 2017	Hokitika
22 September 2017	Greymouth
30 November 2017	Haast/Bruce Bay
22 February 2018	Hokitika
19 April 2018	Karamea
28 May 2018	Hokitika (Park Plan Meeting only)

#### Subcommittee Meetings

Date	Area
27 July 2017	Hokitika
21 September 2017	Hokitika
1 December 2017	Franz Josef
27 March 2018	Hokitika

### 6.2. Attendance

The table below shows the number of Board meetings attended by members out of the total number of meetings held during the year.

Member	Home	Attended
Mike Legge (Chair)	Charleston	6/6
Rauhine Coakley	Arahura	6/6
Terry Scott	Oxford	5/6
Dan Moloney	Westport	5/6
Rob Roney (Deputy)	Greymouth	6/6
John Taylor	Reefton	6/6
Paulette Birchfield	Greymouth	4/6
Coraleen White	Westport	5/6
Barry Hughes	Okarito	6/6
Francois Tumahai	Kaniere	4/6
Keith Morfett	Hokitika	6/6

## Westland *Tai Poutini* National Park Plan Subcommittee meetings

Member	Home	Attended
Mike Legge (Chair)	Charleston	4/4
Rob Roney (Deputy)	Greymouth	4/4
Terry Scott	Oxford	3/4
Barry Hughes	Okarito	4/4
Keith Morfett	Hokitika	4/4
Hinerangi Barr (Makaawhio)	Wellington	2/4
Tim Rochford (Makaawhio)	Wellington	3/4

### 6.3. Field Trips

#### Cobden Island – September 2017

After the Board meeting at the Ashley Hotel in Greymouth, the Board headed out for a field trip to see the work completed by the Department and the Cobden Aromahana Sanctuary and Recreation Areas at Cobden Island. The restoration work completed there involved four kms of channel being excavated and planted – they are now teeming with inanga and other fish species. They also have a successful rodent and mustelid trapping programme on the island and the traps are checked once a week by a volunteer.



*L to R: J Comrie, P Freeman, B Hughes, J Taylor, K Morfett – Photographer John Reid*

## Haast/Bruce Bay – November 2017

The Board had a field trip to the Visitor Centre in Haast where they had a presentation from Stacey Lockie on the Tokoeka Kiwi. There was a baby Tokoeka Kiwi which had been unweight and was being looked after by staff, the Board got to pay a visit to Kiwi which was gaining weight and getting ready to be released again.



*Baby Tokoeka Kiwi - Haast - Photographer Rob Roney*



*The Board outside the Bruce Bay Marae where they held the November meeting. Photographer - Joy Cowan*

## Oparara Arches – April 2018

The Board had a joint meeting with the Nelson/Marlborough Board and a field trip to the Oparara Arches. This was timely after presentations from the Oparara Trust and lots of discussion at the Public meeting about the area.



*West Coast Tai Poutini and Nelson/Marlborough Conservation Board at the Oparara Arches.  
Photographer Suvi van Smit*

### 6.4. Community and DOC Involvement in Board Meetings

The Board welcomes presentations from members of the public and Department staff at the meetings. During 2017-2018 we had presentations from:

- Cobden Aromahana Sanctuary and Recreation Areas
- West Coast Penguin Trust
- Walking Access Commission
- Tourism West Coast - Kevin Stratful
- ZIP - Al Bramley
- Rob Brown - Andy's Hut proposal
- Tom Hopkins - Paparoa track update
- Kelly Stevens - Kotahitanga mō te taiao alliance
- Barney Thomas - Te Ao Maori



- Kevin Hague – Forest and Bird
- Neil Silverwood – Karst Landscapes
- Phil Rossiter – Mokihinui Lyell Backcountry Trust
- Gerry McSweeney – NZCA West Coast representative

The Board had Public Meetings in the evening in Haast in November and in Karamea in April.

## 7. Board Committees and Representation

### Subcommittees

Subcommittee	Members
Westland National Park Review	Mike Legge Rob Roney Barry Hughes Keith Morfett Terry Scott Tim Rochford – Makaawhio (co-opted to subcommittee) Hinerangi Barr Makaawhio (co-opted to subcommittee)



*Tawaki penguins at their nesting area, South Westland. Photographer: G McSweeney*

## 8. Board Functions Under Section 6m of the Conservation Act 1987

The functions of the Board are:

- (a) To recommend the approval by the Conservation Authority of conservation management strategies, and the review and amendment of such strategies, under the relevant enactments
- (b) To approve conservation management plans, and the review and amendment of such plans, under the relevant enactments
- (c) To advise the Conservation Authority and the Director-General on the implementation of conservation management strategies and conservation management plans for the area within the jurisdiction of the Board
- (d) To advise the Conservation Authority or the Director-General
  - (i) On any proposed change of status or classification of any area of national or international importance; and
  - (ii) On any other conservation matter relating to any area with the jurisdiction of the Board
- (f) To liaise with any Fish and Game Council on matter within the jurisdiction of the Board
- (g) To exercise such powers and functions as may be delegated to it by the Minister under this Act or any other Act

## 9. Powers of the Board under Section 6n of the Conservation Act 1987

- (1) Every Board shall have all such powers as are reasonably necessary or expedient to enable it to carry out its functions.
- (2) Without limiting the generality of subsection (1), each Board may –
  - (a) Advocate its interests at any public forum or in any statutory planning process; and
  - (b) Appoint committees of members and other suitable persons, and delegate to them functions and powers.
- (3) The power conferred by subsection (2)(a) shall include the right to appear before courts and tribunals in New Zealand and be heard on matters affecting or relating to the Board's functions.

## 10. Responsibilities under other Sections of the Conservation Act 1987

At the Board meeting in May 2017, the Board passed the following resolution:

“That Tim Rochford and Hinerangi Barr be co-opted onto the Westland *Tai Poutini* National Park Plan Sub-Committee for the period of the National Park Plan Review”

This is for the purpose of the plan being completed in full partnership with Te Rūnanga o Makaawhio.

## 11. Board Functions under the National Parks Act 1980

There are two national parks within the Board’s region: Paparoa National Park and Westland National Park. The Board has sub committees involved in the management plan review for these. The Board also advocates for cross boundary issues with Kahurangi National Park (which is the responsibility of the Nelson Marlborough Conservation Board), Arthur’s Pass National Park (Canterbury *Aoraki* Conservation Board) and Mt Aspiring National Park (Otago Conservation Board).



*Lake Moeraki Scenic Reserve – Photographer: G McSweeney*

## **12. Liaison**

All Board members have responsibility for liaising with other groups when opportunities arise and some members have specific roles in liaison.

Public forums are offered at each Board meeting for members of the community to raise conservation issues with the Board.

### **12.1. Other Conservation Boards and New Zealand Conservation Authority**

The West Coast *Tai Poutini* region's immediate neighbours are the Nelson Marlborough, Canterbury *Aoraki* and Otago Conservation Boards. Liaison with neighbouring Boards are maintained principally through the exchange of minutes and agendas.

During the year the Board had a joint meeting with Nelson Marlborough and some Board members attended a Canterbury *Aoraki* Board meeting. The chair also attended some Otago and Southland meetings.

Gerry McSweeney the West Coast NZCA representative attended two Board meetings this year. Robyn Jebson the NZCA representative for the *Tai Poutini* Westland National Park Plan Review attended the Subcommittee and Park Plan meetings.

### **12.2. Community**

The West Coast is a region of small communities. Board members are often well known in their local communities and have regular contact with members of the public. Where possible the Board tries to meet with local community groups while on field inspections.

Board members are invited to join in activities organised by the Department and other conservation groups to celebrate national events. This gives members a chance to interact with other groups and to learn more about the Department's work.

### **12.3. District and Regional Councils**

The Board appreciates the opportunities to meet with representatives of the four local Councils as there are several regional issues in which it is interested.

### **12.4. Iwi**

Two members of the Board are nominated by Ngāi Tahu as required under the Ngāi Tahu Settlement Act 1998. The Board worked closely with Iwi for the purpose of the *Tai Poutini* Westland Park Plan Review.

# Appendix I – West Coast *Tai Poutini* Annual Work Plan

## Work Board Programme for 1 July 2017 – 30 June 2018

Colour	Indicates
Green	Completed
Yellow	Started and is ongoing
Red	Not yet started

### Work Programme Overview

This West Coast *Tai Poutini* Conservation Board work programme has been developed in response to the Letter of Expectation from the Associate Minister of Conservation dated 31 August 2016. It is structured in three parts, namely:

- Part A: Planned Board activities aimed at meeting the regional Work Programme contained in the letter:
  - Review/development/monitoring of statutory management plans including Conservation Management Strategies (CMS);
  - Advice relating to stewardship land;
  - Other statutory functions for the Board;
  - Advocacy; and
  
- Part B: Planned Board activities aimed at general expectations contained in the letter:
  - Working with the Department;
  - Taking account of the Ministerial priorities for the Department as contained in the Statement of Intent;
  - Working with adjoining Boards and the NZCA;
  - Understanding the Board's contribution to giving effect to the principles of the Treaty of Waitangi;
  - General engagement with the community, including raising the profile of the Board; and
  
- Part C: Risks/issues from the Board's perspective, and opportunities for conservation growth that are not covered above.

## PART A: REGIONAL WORK PROGRAMME

### 1. Review/development of statutory management plans including Conservation Management Strategies (CMS)

#### 1.1. Board Objective:

The Board will review the revised West Coast CMS draft and will recommend the approval of the draft by the NZCA with or without amendments

#### Planned Board Activities

#### Progress Updates

(a)	Continue with <i>Tai Poutini</i> Westland National Park review.	The Draft Plan is now ready for Public Notification. This will be out by the end of August 2018
(b)	Liaise with Canterbury <i>Aoraki</i> Conservation Board on the <i>Aoraki</i> /Mt Cook National Park Management Plan	Liaison work ongoing. Draft Plan will be notified at the same time as <i>Tai Poutini</i> .
(c)	Liaise with Otago and Southland Conservation Boards on the Mt Aspiring and Fiordland National Park Management Plans	Liaison work ongoing. M Legge attended Otago/Southland Board meeting.
(d)	Liaise with local authorities on issues relating to the CMS	Liaison work ongoing.
(e)	Work in conjunction with all related parties on the strategy for the Te Wahipounamu South West New Zealand World Heritage Area	M Legge attended Hui in Wanaka to discuss World Heritage Area. This work is ongoing.

#### 1.2. Board Objective:

In conjunction with the Department, the Board will determine priorities for implementation of the approved West Coast CMS

#### Planned Board Activities

#### Progress Updates

(a)	In conjunction with the Department prioritise areas in the CMS, which require review	Ongoing, the Board receives regular updates from Department staff.
(b)	Ensure alignment of National Park Management Plans with the CMS	Ongoing. Discussion with both Otago and Southland Conservation Boards on common areas.

## 2. Stewardship Land

### 2.1. Board Objective:

The Board will provide the Minister and Department with advice on priorities for reclassification of stewardship areas that require Increase protection because of their significant conservation values.

#### Planned Board Activities

#### Progress Updates

	(a) Continue review of 'low priority' Stewardship land by liaising with the Department and considering the West Coast Growth Study	Ongoing. Waiting for Stewardship land decisions.
	(b) Continue to promote and support the identification and re-classification of 'high priority' Stewardship land suitable for reclassification	Ongoing. As above
	(c) Maintain an oversight of the re-classification of 'high priority' Stewardship land consistent with the "Development of the five-year re-classification plan"	Ongoing. As above

## 3. Other statutory functions<sup>1</sup>

### 3.1. Board Objective:

The Board will nurture ongoing working relationships with Fish and Game Councils regarding issues of mutual interest within the region

#### Planned Board Activities

#### Progress Updates

	(a) Continue to maintain liaison with Fish and Game	R Roney is a current member of Fish and Game West Coast Council and provides updates every meeting.
	(b) Maintain good communications with the New Zealand Conservation Authority	G McSweeney the Boards NZCA representative provides updates to the Board at meetings. Robyn Jebson has been very involved in the Park Plan Review and all NZCA minutes and papers are circulated to the Board.

<sup>1</sup> This section should include Board functions relating to statutory functions under section 6M of the Conservation Act

### 3.2. Board Objective:

The Board will advise on proposed changes of status for national and internationally important areas, when sought but the department

#### Planned Board Activities

#### Progress Updates

	(a) The Board will advise on proposed changes of status for nationally and internationally important areas, when sought by the department	Ongoing. Liaison with the Department.
--	---	---------------------------------------

## 4. Advocacy

### 4.1. Board Objective:

The Board will pursue all reasonable opportunities to advocate at public forums and in any statutory planning process

#### Planned Board Activities

#### Progress Updates

	(a) Continue advocacy on marine protection including Conservation Services Programme	Continue to make submissions relevant to this programme.
	(b) Continue advocacy role on Regional, District and Coastal Plans	Ongoing. Submissions relating to both local and regional councils.
	(c) Continue advocacy on protection of historic places and sites	Ongoing.
	(d) Continued advocacy and support for the Departments biodiversity work	Ongoing. Continue to provide and identify relevant information relating to biodiversity.
	(e) Continued advocacy on conservation outcomes in general on public and private land	Ongoing.



#### 4.2. Board Objective:

Planned Board Activities	Progress Updates
(a) Continue to work in partnership with Ngāi Tahu and local Iwi.	The Board has continued to have strong relationships with Ngati Waewae and Makaawhio. Makaawhio and Ngāi Tahu have worked closely with the Board on the Westland <i>Tai Poutini</i> Park Plan Review.
(b) Participate in the Punakaiki development plan	Ongoing, with update at present.

### PART B: GENERAL EXPECTATIONS

#### 5. Working with the Department

##### Board Objective:

Board members will maintain good working relationships and open dialogue with Directors, Managers and Board Support Officers in order to engage strategically in conservation for the region.

Planned Board Activities	Progress Updates
(a) Maintain excellent relationships with the West Coast Region, Department of Conservation	Ongoing.
(b) In consultation with the Department support the Regional Development Plan	Ongoing.
(c) Support the Board Support Officer	The Board acknowledges the excellent work by the Board Support Officer.
(d) Encourage partnerships with the Department in developing conservation strategies	Ongoing.

6. Taking account of Ministerial priorities for the Department<sup>2</sup>

**Board Objective:**

The Board will identify opportunities to support West Coast community conservation as identified.

**Planned Board Activities**

**Progress Updates**

	(a) Continue to review and monitor pest management programmes and their effect on biodiversity	Ongoing. Updates from groups and organizations, and scientific literature reviews.
	(b) Continue to review and submit on the Department's Policy and Management documents	Ongoing. The Board is well informed.
	(c) In conjunction with the Department and local business communities investigate the impact of tourism on the West Coast of conservation values	Ongoing. Updates on tourism and new initiatives/developments from various agencies.
	(d) Encourage local conservation community groups to present their projects to the Board	Ongoing.

**Board Objective:**

The Board will identify opportunities for building relationship to support the Healthy Parks/Healthy People programme

**Planned Board Activities**

**Progress Updates**

	(a) In conjunction with the Department assist in formulating approaches based on "Nature of Wellbeing" report to support "Healthy Parks/Healthy People" concept	Ongoing. Integration of the concepts in to the National Park Plans.
	(b) Maintain updates on developments in pest control and management	Ongoing. Presentations and relevant scientific literature circulated and discussed.
	(c) Maintain contact with local communities by holding Board meetings throughout the region	Ongoing. Board meetings held in different West Coast locations.

---

<sup>2</sup> This section could include where Boards are consulted on pest control operations

7. Working with adjoining Boards and the NZCA

**Board Objective:**

Board member will liaise with neighbouring conservation boards in order to progress cross boundary CMS issues and other matters of interest

**Planned Board Activities**

**Progress Updates**

	(a) Please refer to section 1.1	
	(b) Continue to exchange Agendas and Minutes with South Island Boards and continue to have a policy of engaging in joint meetings with other South Island Boards	Occurring and ongoing.
	(c) Use Chairs meetings to facilitate face-to-face discussions	Occurring and ongoing.
	(d) Maintain open communication with the New Zealand Conservation Authority	Occurring and ongoing.

8. Understanding the Board’s contribution to giving effect to the principles of the Treaty of Waitangi

**Board Objective:**

The Board will understand and support the Board’s and Department’s obligations under Treaty settlements as well as principles under section 4 of the Conservation Act

**Planned Board Activities**

**Progress Updates**

	(a) The Board will understand and support the Board’s and Department’s obligations under Treaty settlements as well as under section 4 of the Conservation Act	Ongoing.
	(b) Continue to develop a partnership with Ngāi Tahu and local Iwi in early consultation planning	Ongoing.

9. Engaging with the community, including raising the profile of the Board

**Board Objective:**

Board members will liaise regularly with other conservation entities, such as district and regional councils, NGOs and community groups, in order to enhance the profile of the Board and pursue good working relationships on issues of mutual interest and concern

**Planned Board Activities**

**Progress Updates**

	(a) Board members will liaise regularly with local Iwi and local authorities, such as District and Regional Councils, NGOs and community groups, in order to enhance the profile of the Board and pursue good working relationships on issues of mutual interest and concern	Ongoing.
	(b) Ensure that all Board meetings are ‘open’ with minor exceptions	Board meeting during the year were open and many members of the public attend the meetings.
	(c) Maintain media contacts	The Chair talks to the media after every meeting.

**Board Objective:**

Board members will take the initiative to meet with community groups and the general public to gauge community reaction to conservation initiatives planned or implemented by DOC

**Planned Board Activities****Progress Updates**

(a)	Board members will take the initiative to meet with community groups and the general public to gauge reaction to conservation initiatives planned or implement by the Department	Ongoing. Public for a at each Board meeting. Reports on the Board Agenda and meetings to local media and the Department web-site. Correspondence with the public on specific issues raised.
(b)	Review Resource Consent application when appropriate	Ongoing. Board reviewing concessions process and RMA process.
(c)	Attend Hearings when appropriate	Ongoing.

**PART C: RISKS AND OPPORTUNITIES****10. Risks from the Board's perspective**

- (a) Board members time
- (b) Funding of Board activities especially with National Park and related reviews
- (c) Geography/distance on the West Coast
- (d) High workload outside of Board meetings

**11. Opportunities for conservation growth**

- (a) Working closely with the Department on significant West Coast issues
- (b) Encourage historic places conservation and management
- (c) Whitebait regulations
- (d) Enhancing engagement with communities through Community Partnership Funding
- (e) Promote public participation in and an understanding of all weed and animal pest control strategies