

Wellington Hawke's Bay Conservation Board
Te Runanga Papa Atawhai O Te Upoko O Te Ika me Te Matau a Maui

**Annual Report to the
New Zealand Conservation Authority
1 July 2010 to 30 June 2011**



**Serviced by
Wellington Hawke's Bay Conservancy, Department of Conservation
PO Box 5086, Wellington, New Zealand**

Contents

1	Introduction	1
2	Functions and powers	2
3	Coverage	2
4	Meetings, visits and workshops	4
5	Public involvement	4
6	Advising on implementation of the Conservation Management Strategy	5
7	Review of the Conservation Management Strategy	6
8	Advocating for conservation within the Conservancy	7
9	Advocating for conservation at the national level	7
10	Advice to the New Zealand Conservation Authority	7
11	Advice to the Director-General of Conservation and the Conservator	7
12	Conservation Week 2010	8
13	Liaison	8
14	Chairperson's Comment	8
Appendix 1:	Board members' participation in Board activities	10
Appendix 2:	Key achievements by the Wellington Hawke's Bay Conservancy in 2010/11	11

Cover Photo: Walking track, Ahuriri Estuary. Photo: Barbara Curtis.

1. Introduction

The Wellington Hawke's Bay Conservation Board has prepared this Annual Report for the New Zealand Conservation Authority as required by Section 60 of the Conservation Act 1987. The Board also intends to distribute copies to many other individuals and organisations that may have an interest in the Board's role and activities.

This is the second report of the Wellington Hawke's Bay Conservation Board. The Wellington Hawke's Bay Conservation Board was created in July 2009 following disestablishment of the East Coast Hawke's Bay Conservation Board.

1.1 Members of the Board

In January 2010 the Minister of Conservation Minister announced new members and the Board grew to 12 members again.

The following table summarises the Board's membership during the 2010/11 year.

Name	Area	Date first appointed	Term ends/ended	Years of service
Helen Algar, Chair	Wellington	01/09/2004	31/08/2011	7
Geoff Doring	Wairarapa	01/09/2004	31/08/2011	6
Andrew Foster	Wellington	01/09/2004	31/08/2010	6
Nicky Nelson, Deputy Chair	Wellington	16/10/2006	30/06/2012	5
Rob McColl	Wellington	16/10/2006	30/06/2012	5
John Hancock	Wairarapa	01/09/2007	31/08/2012	4
Margaret Shields	Kapiti	01/09/2007	31/08/2010	4
Ra Pomare	Kapiti	01/09/2008	31/08/2011	3
Kevin Trerise	Hawke's Bay	05/08/2010	30/06/2014	1
Don Adams	Wairarapa	01/01/2011	30/06/2013	.5
Garth Eyles	Wairarapa	01/01/2011	30/06/2013	.5
Malcolm Guy	Manawatu	01/01/2011	30/06/2013	.5
Anne Lawrence	Manawatu	01/01/2011	30/06/2013	.5
Papara Carroll	Hawke's Bay	03/02/2011	30/06/2013	.5
Doug Stevens	Wellington	01/01/2011	Stood aside until after the general election Nov 2011.	



Board Members – From left: Malcolm Guy, Doug Stevens, Anne Lawrence, Papara Carroll, Kevin Trerise, Helen Algar, Garth Eyles, John Hancock, Rob McColl, Don Adams. (Absent: Nicky Nelson, Ra Pomare)

Ahuriri Estuary, Hawke's Bay. 4 February 2011. Photo: Bronwyn Bell

2. Functions and powers

The functions and powers of the Board are set out formally in sections 6M and 6N of the Conservation Act 1987. Key roles include:

- providing advice to the Department of Conservation (DOC) and the New Zealand Conservation Authority (NZCA)
- recommending that the NZCA approves the next Draft Conservation Management Strategy (CMS)
- advocating for conservation in statutory processes and public forums.

Conservation management strategies are statutory documents which show how general policies will be implemented. They also establish objectives for the integrated management of natural and historic resources and for recreation, tourism and other conservation purposes.

3. Coverage

The Wellington Hawke's Bay Conservation Board's coverage increased from December 2010 when the Manawatu/Rangitikei Area became part of the Wellington Hawke's Bay Conservancy. Board coverage now extends from the bottom of the North Island to the Turakina River and inland to just north of Taihape in the west, and across to the east coast where it extends to the Mahia Peninsula. It is the same area as the Department of Conservation's Wellington Hawke's Bay Conservancy without the Chatham Islands.

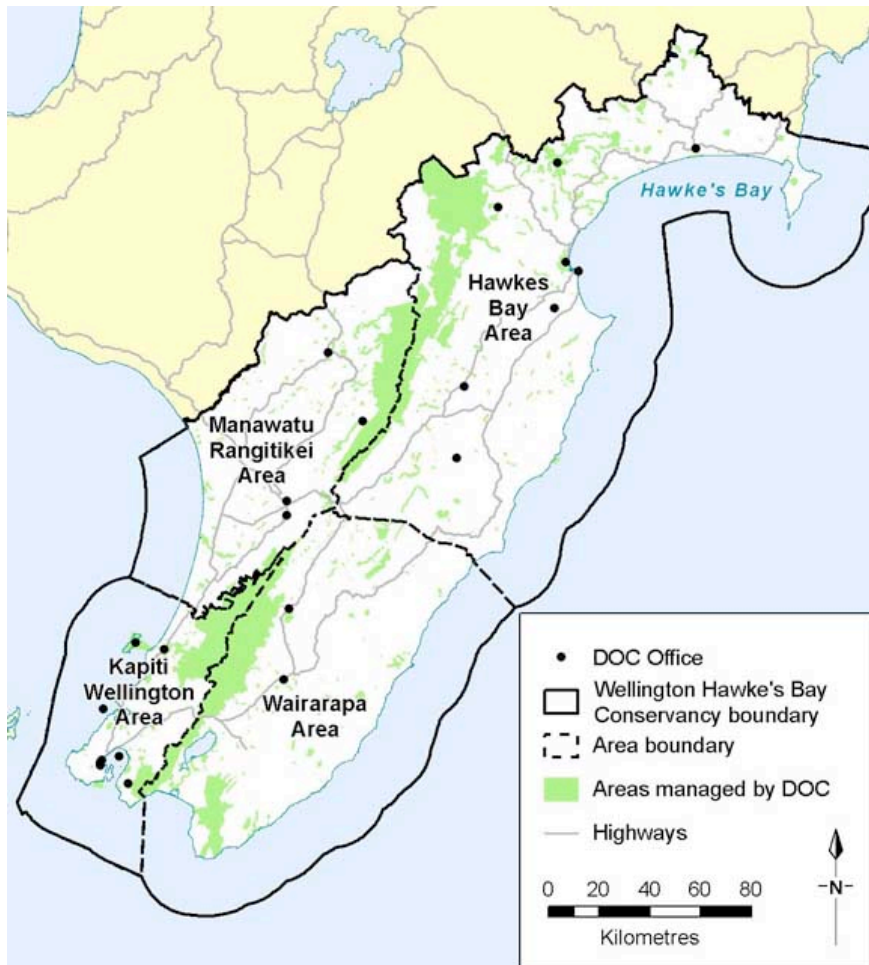


Figure 1: Map of the Wellington Hawke's Bay Conservation Board's area

3.2 Key places

Some of the key places managed by DOC in the Board's area are:

Lake Wairarapa Wetlands	Puketitiri Reserves	Rimutaka Forest Park
Ahuriri Estuary	Hemi Matenga Scenic Reserve	Kaweka Forest Park
Castlepoint Scenic Reserve	Papaitonga Scenic Reserve	Tararua Forest Park
Cape Palliser	Tora Scenic Reserve	Aorangi (Haurangi) Forest Park
Pukerua Bay Scientific Reserve	Paraparaumu Scenic Reserve	Government Buildings
Otatara Pa Historic Reserve	Carter Scenic Reserve	Turnbull House
Snail Reserves, Horowhenua	Lake's Opouahi & Tutira	Dominion Observatory
Matiu/Somes Island	Colonial Knob	Taputeranga Marine Reserve
Mana Island	Makara Coast	Te Angiangi Marine Reserve
Kapiti Island Nature Reserve	Kapiti Island North Reserve	Kapiti Marine Reserve
National Wildlife Centre (Pukaha/Mt Bruce)	Boundary Stream Mainland Island	Cape Kidnappers Gannet Colony
Waikanae Estuary	Kohunga Lakes	Ruahine Forest Park
Putangirua Pinnacles Scenic Reserve	Turakirae Head Scientific Reserve	Pauatahanui Inlet, Porirua Harbour
Pukepuke Lagoon.	Round Bush Scenic Reserve.	Manawatu Estuary
Manawatu Gorge Scenic Reserve.	Tawhirihoe Scientific Reserve.	Moana Roa Conservation Area.

4. Meetings, visits and workshops

During the 2010/11 financial year, the Board's formal programme comprised four meetings and two field trips.

4.1 Meetings

The Board scheduled four full-day meetings:

- 6 August 2010 at the Wildlife Centre, Pukaha Mt Bruce.
- 12 November 2010 at Turnbull House, Wellington.
- 5 February 2011 at the Area Office, Napier.
- 6 May 2011 at the Old Government Building in Wellington.

4.2 Field Trips

Visits to specific locations provide opportunities for the Board to:

- become more familiar with the conservation values of key places
- discuss management challenges and approaches with DOC staff and stakeholders
- monitor progress towards the objectives in the current CMS
- identify issues that may need to be addressed during the review of the CMS.

4.3 Field trip in the Hawke's Bay Area

On 4 February 2011 the Board visited the Ahuriri Estuary, Napier.

The field trip concentrated on two areas within the Estuary with a range of issues considered.

- At the northern end of Ahuriri Estuary is a site where wetland enhancement is being undertaken to increase the local bittern habitat. Issues here included restricted habitat and pressure for public access route adjacent to the wetland.
- The southern end of the estuary provides a pleasant walk close to urban development and the opportunity to observe wading birds relatively closely. Issues here included weeds, industrial waste, dog disturbance and future development.

4.4 Field trip in the Wairarapa Area

On 7 May 2011 the Board visited Lake Wairarapa where the future management of the lake and surrounding reserves was discussed.

4.3 Participation and fees

Individual Board members' participation in Board activities during 2010/11 is shown in Appendix 1.

For approved Board activities, Board members are paid \$140 per day and the Board Chair \$190 per day.

5. Public Involvement

The Board informs and interacts with the public through forums, correspondence, its annual report and the DOC website. The Board's formal relationships with specific organisations are described in section 13.

5.1 Public Forum

During 2010/11, the Board welcomed individuals to the Public Forum, a session scheduled at each meeting to enable people to speak to the Board about agenda items or other conservation issues. The Board regards the Forum as an important opportunity to hear from the community and hopes to see more people take up this opportunity in 2011/12.

Matters raised by speakers who participated in these forums included the following:

- Cycleway proposal at Ahuriri Estuary, Napier, and the impacts on local wildlife.
- Kiwi deaths at Pukaha and resultant ferret trapping programme.
- Presentation by “Walk on Water” (WOW) a Hawke’s Bay environmental group.
- Presentation by Genesis Reforestation Trust about its objectives and work on conservation projects.

5.2 Correspondence

The Board values receiving information from people who have specific interests and/or a long-term association with specific areas within the Conservancy.

5.3 Distribution of the Board’s Annual Report

Although the NZCA is the primary audience for the Board’s annual reports, the Board circulates its Annual Report more widely to increase awareness of the Board’s role and conservation issues in the Conservancy. The distribution list includes public libraries, local members of Parliament, local media and a wide range of conservation and recreation groups.

5.4 The Board’s website

The Board posts on its pages of DOC’s website, the agendas for and minutes of its meetings, all submissions made by the Board, a document setting out its Strategies and Directions and its annual reports.

<http://www.doc.govt.nz/getting-involved/nz-conservation-authority-and-boards/conservation-boards-by-region/wellington-hawkes-bay/>

6. Advising on implementation of the CMS

(Section 6M of the Conservation Act 1987)

6.1 Current CMS

Wellington’s current CMS was approved in April 1996. Under the Conservation Act 1987, the Director-General is required to review each CMS as a whole not later than 10 years after the date of its approval. The Minister first approved an extension to June 2008, and more recently, a further extension to June 2010.

The Board is responsible for monitoring the performance of the Conservancy in managing the conservation estate in the Conservancy, including holding DOC accountable for achieving the objectives/milestones in the current CMS and for providing a mechanism for the public/community to input to, comment on, or ‘enquire’ about the performance of DOC in the Wellington Conservancy.

6.2 Conservation Action Plans

The Board has strongly supported the development of Conservation Action Plans (CAPs) which identify and prioritise conservation priorities in each Area and are an integral part of business planning for the Conservancy. A mechanism to rank the merit of conservation projects was developed in the Conservancy with Board input and is used in developing the CAPs.

The Wairarapa, Poneke and Kapiti Area CAPS were prepared in parallel with, and are consistent with, the Preliminary Non-statutory Draft of the Wellington CMS. The Hawke’s Bay CAP was developed in the same format during the year. Manawatu Rangitikei Area is in the process of developing a CAPS to be available late 2011.

In the absence of a relevant current CMS, the Board received regular reports from the Conservator, Area Managers and key technical specialists on activities, priorities and

challenges in implementing current strategies and plans. This included priorities and progress in relation to one Area's CAP at each meeting. The CAPS will inform the new Wellington Hawke's Bay CMS.

7. Review of the CMS by the Director-General

(Section 7H (4) of the Conservation Act 1987)

7.1 Preliminary Non-statutory Draft of the Wellington CMS

Work on a review of the Wellington CMS (excluding the Chatham Islands Area which has its own CMS) began in earnest in 2008/09. This review was undertaken by DOC people from across the Conservancy working together with the Conservation Board to develop a document that sets priorities, direction and forward aspirations for conservation in the greater Wellington region.

A working draft of the CMS was developed through 2009 with the intention of completing and releasing the statutory draft in late 2009. The working draft represents a great deal of thought and effort from many people and is the most comprehensive and up to date assessment of the key conservation issues, values and priorities in the Wellington Conservancy. It sets out aspirations for conservation and outlines the Conservancy's intended future direction, whilst not documenting detailed work tasks.

When the new Wellington Hawke's Bay Conservancy was formed and the conservation boards were realigned to form a Wellington Hawke's Bay Conservation Board, the Board and Conservator decided that the new CMS should reflect the new geographic area. At the same time the Department was required to identify savings for the financial year 2009/10. The Department suggested that it would be sensible to defer CMS development given the amount of work required to create a new Conservancy and the need to bring the Hawke's Bay Area into a new Wellington Hawke's Bay CMS. As a result, and with the agreement of the Wellington Conservation Board, the Conservator decided to make savings by putting the next stage of the review of the Wellington CMS on hold until 2010/11.

Given the interest of key partners, groups, clubs and some individuals in progress with the draft CMS, and the value of the work done so far, the Conservator and the Conservation Board felt that it was important to provide an opportunity for people to view the draft. We decided to release the Preliminary Non-statutory Draft of the Wellington CMS. This is not a formal draft as described in the Conservation Act; it does not have any statutory status. The document was released in April 2010 on the DOC website to avoid incurring additional cost at that stage.

The draft will change as it goes through further testing and editing, once DOC and the Board recommence work on it. It does though provide an opportunity for the public to make any comments to assist with future drafting.

The Hawke's Bay CMS 2008 was also due for review. A draft East Coast Hawke's Bay CMS was being developed until early 2009. The sections relating to Hawke's Bay will be reviewed for incorporation in the new CMS.

As part of a national programme to prepare CMS documents, teams have been set up to work through national issue sections and provide consistency on format and content. Part of this process has necessitated programming when individual CMS work will begin and Wellington Hawke's Bay Conservancy is programmed for late 2011, early 2012.

When work resumes on the new Wellington Hawke's Bay CMS all interested groups and the public will be able to comment via formal submission and hearing processes as required for the review and development of a CMS.

7.2 New guidance on the content of the future CMS

DOC and the New Zealand Conservation Authority have been working on new guidance on the content of future Conservation Management Strategies. The Board was consulted on proposals, including at the Conservation Board Chairs' meeting in June 2010.

The Board looks forward to continuing with development of the new Conservation Management Strategy for Wellington and Hawke's Bay during 2011/12.

8. Advocating for conservation within the Conservancy

(Section 6N of the Conservation Act 1987)

The Board considers at each meeting the opportunities and priorities for statutory advocacy and the availability of members to prepare submissions. Submissions are progressed by email between meetings and ratified at the following meeting.

8.1 Local government plans and policies

The Board received a presentation on Greater Wellington Regional Council's Regional Plan Review and it was noted that the information gathered would be available to the Board and the Department as input to the CMS process when it resumes.

8.2 Other Statutory Advocacy

The Board made a submission on the Wairarapa Moana Wetlands Park to the projects governance group advocating for a balanced approach between conservation and other objectives.

It was noted that the main avenue for Board participation in the formal arrangements relating to Wairarapa Moana was the Lake Wairarapa Co-ordinating Committee.

9. Advocating for conservation at the national level

(Section 6N of the Conservation Act 1987)

9.1 Game Animal Council

The Board taking into account the final report of the Establishment Committee reiterated opposition to the Game Animal Council as per its submission in November 2009.

10. Advice to the New Zealand Conservation Authority

(Section 6M of the Conservation Act 1987)

The Board responded to an invitation from the New Zealand Conservation Authority to comment on a new draft structure for the CMS document. We were pleased that most of our suggestions were incorporated into the revised format.

11. Advice to the Director-General of Conservation and the Conservator

11. Concessions in the Conservancy

The Board reviewed applications for and progress with concessions at each meeting and provided advice to the Conservator in accordance with an agreed trigger process. The Board continued to take a particular interest in applications to regularise arrangements for existing activities which did not have a concession in place.

11.2 *Project Kaka*

Rob McColl represented the Board on the steering committee established in August 2009 to plan for the Project Kaka: Tararua Nature Recovery. The Board considered a progress report at each meeting. The Project involves intensive possum and predator control over 22,000 ha in the centre of Tararua Forest Park and is co-ordinated with an adjacent Animal Health Board bovine TB possum control operations. The Project includes a rigorous 'before and after' monitoring programme to ascertain conservation benefits and is supported by research studies conducted by Landcare Research Ltd. The first control operation was conducted in November 2010 with initial results indicating a good kill rate. The Board is very interested in the bird population monitoring results as time allows trends to evolve.

11.3 *Te Araroa Trail; The Long Pathway*

The Board has a statutory obligation to advise the Conservation Authority and the Director-General on proposals for new walkways in any area within the Board's jurisdiction.

The Board was pleased that the section from Levin to Otaki Forks was agreed on between the Department and the Te Araroa Trust. With the establishment of the track from Levin to Otaki Forks providing certainty, as to available route, work from Otaki Forks to Waikanae was undertaken.

12. **Conservation Awards**

The combined Greater Wellington Regional Council and Department of Conservation Encore Awards function was run on 17 November 2010 with very good attendance. Board members were involved in the judging and this was seen as a good opportunity to engage with the community.

13. **Liaison**

13.1 *Fish and Game Council*

John Hancock represented the Board in liaising with the Fish and Game Council's Wellington Region, and made contact with the Hawke's Bay Region.

13.2 *Marine Reserves*

The Board decided, upon advice from the Department about Marine Reserve Committee management, to disestablish the committees operating in the Kapiti and Te Angiangi Marine Reserves. Work undertaken by the committees in the period since the reserves were established was both necessary and appreciated; however it was felt that the need for specific committees as established entities no longer existed.

13.3 *National Wildlife Centre Trust*

Geoff Doring represented the Board on the National Wildlife Centre Trust. At the end of Geoff's term, the Board reviewed the need to be represented on the Trust and decided that a regular report was sufficient and attendance at meetings was not required.

14. **Chairperson's Comment**

The 2010/11 year has been another of change and challenges for the Wellington Hawke's Bay Conservation Board. In December our area of responsibility expanded again, to include the Manawatu/Rangitikei Area. We farewelled Andy Foster and Geoff Doring in February and I thank them for their passionate work for conservation. We were joined in November 2010 by Kevin Trerise (who now chairs the Board), and in February 2011 by Anne Lawrence, Don Adams, Garth Eyles, Malcolm Guy and Papara Carroll, taking the Board back to full complement. This let us establish an expectation of liaison with conservation groups across

the expanded Conservancy, and agree a pattern of meeting once each year in the Wellington, Wairarapa, Hawke's Bay and Manawatu/Rangitikei Areas.

The Board takes seriously its statutory roles of recommending that the NZCA approve the next Draft Conservation Management Strategy (CMS) for the Conservancy and advocating for conservation in statutory processes and public forums. In the absence of an active Conservation Management Strategy (CMS) process in the Conservancy during 2010/11, the Board continued to receive a report from one Area Manager at each meeting on progress against the Conservation Action Plans. The Board strongly supported the development of Conservation Action Plans (CAPs) which reflects the conservation priorities and challenges for the Area. We found these reports, and associated field trips, very useful in building members' knowledge of the conservation assets and values in the Conservancy.

We support the new format of the CMS, which is intended to focus at a strategic level, while providing good guidance to the Conservator in decisions within the Conservancy. The important intention is to ensure clarity for the members of the public as to how their public conservation resources will be managed in an integrated way at places. It will be interesting to see how the new national optimisation tools, such as the Natural Heritage Management System and the Destination Management Framework, are integrated with local priorities.

Highlights of the 2010 year were the launch of the Encore Awards, which combined the Board's former Conservation Awards with the Environment Awards previously run by Greater Wellington Regional Council; and the formal launch of the Wairarapa Moana Wetlands Park, which had been facilitated at an early stage by the Board. The Conservancy faced challenges with kiwi predation at Pukaha Mount Bruce, where the Conservancy responded effectively, and some local interest groups provided additional information to the Board. During 2011 the Board was challenged to consider more actively the role of recreational hunting both as a recreational use of public conservation lands and as an adjunct to the predator control.

The Board made fewer submissions on local government documents in 2010/11 than in previous years. There has been ongoing discussion as to whether the interface between local government planning and consultation processes, and the processes relating to CMS development and consultation could be organised more effectively.

The Board has valued the regular flow of information from the NZCA, and the Department of Conservation. I would like to thank Conservator Alan McKenzie, Ian Cooksley, Bronwyn Bell and all the people in the Conservancy for their support to the Board and for their work for conservation.

Finally, to all those Board members with whom I have served over the last seven years, thank you for the opportunity to spend time learning about, and working to advance, the conservation priorities in the areas for which we have had responsibility. I wish you all the best in your work for conservation over the next few years, especially the opportunity and responsibility to contribute to the development of a new CMS for the Conservancy; your ongoing role as one of the channels by which the Conservator and the Area offices hear 'the community voice'; and in providing support to conservation in a way that delivers best value for the Department in times where reducing resources need to be prioritised and carefully focused.

Helen Algar

Chair of the Wellington Hawke's Bay Conservation Board until September 2011.

Appendix 1: Board members' attendance at Board activities

Individual Board members' attendance at Wellington Conservation Board activities during 2010/11 is displayed in the table below:

- ✓ Present
- ✗ apologies

	Algar	Nelson	Foster	Doring	McColl	Hancock	Shields	Pomare
Meeting 6 August 2010	✓	✓	✗	✓	✓	✓	✓	✓
Meeting 12 November 2010	✓	✓	n/a	✓	✓	✓	n/a	✗
Field trip 4 February 2011	✓	✓	n/a	✓	✓	✓	n/a	✗
Meeting 5 February 2011	✓	✓	n/a	n/a	✓	✓	n/a	✗
Meeting 6 May 2011	✓	✓	n/a	n/a	✓	✓	n/a	?
Field Trip 21 May 2011	✓	✗	n/a	n/a	✓	✓	n/a	?
Total Meetings (4)	4	4	1	2	4	4	1	1
Total Field Trips (2)	2	1	1	1	2	2	0	0

	Trerise	Papara	Adams	Lawrence	Guy	Eyles		
Meeting 6 August 2010	✓	n/a	n/a	n/a	n/a	n/a		
Meeting 12 November 2010	✓	n/a	n/a	n/a	n/a	n/a		
Field trip 4 February 2011	✓	✓	✓	✓	✓	✓		
Meeting 5 February 2011	✓	✓	✓	✓	✓	✓		
Meeting 6 May 2011	✓	✓	✓	✓	✗	✓		
Field Trip 21 May 2011	✗	✗	✗	✓	✗	✓		
Total Meetings (4)	4	2	2	2	1	2		
Total Field Trips (2)	1	1	1	1	1	1		

Appendix 2: Conservancy achievements in 2010/11

Department of Conservation Strategic Direction <i>Conserving and managing New Zealand's natural, historic and cultural heritage provides increasing benefit to New Zealanders</i>	
Intermediate outcomes	Activities in 2010/11 which advanced the department's strategic direction
<p>Intermediate Outcome 1: The ecological integrity of managed sites is maintained or restored</p>	<p>Rat numbers plummeted in a 22,000 ha belt across the Tararua Forest Park after a 1080 drop in spring 2010. The target area is the focus of Project Kaka - Tararua Nature Recovery - a plan to restore a diverse native forest bird community to that section of the park. The project is providing opportunities for conservation volunteers, including checking and re-baiting stoat and possum traps, filling bait stations, and monitoring pests, native birds and vegetation. DOC is raising awareness of Project Kaka and other conservation initiatives in Wairarapa through the Wairarapa Wildlife Warriors newspapers in education series in the Wairarapa Times-Age.</p> <p>Sika deer are being tracked by GPS in the Kaweka Forest Park (from September 2010 until May 2012) to determine how time of day, weather, seasonality, population density, hunting pressure, sex, age and breeding cycles influence their habitat use, dispersal and home ranges. This information will promote more efficient herd management by DOC and recreational hunters. Thirteen companies and organisations that will benefit from the information are supporting the project.</p>
<p>Intermediate Outcome 2: The security of threatened species unique to New Zealand, and most at risk of extinction, is improved</p>	<p>An intensive trapping and monitoring regime was initiated on Kapiti Island following a stoat incursion during the year. The first stoat was trapped in February, three months after a stoat was sighted on the island. The pest control regime will remain in place until two years have passed with no sign of stoats. A Kapiti Island stoat management group and advisory group were established to look at whether traditional control methods are working in this 'food-abundant' environment for pests. BNZ Save the Kiwi Trust donated \$25,000 toward the stoat operation and Forest and Bird, \$12,000.</p> <p>The department became a signatory to the Manawatu River Leaders' Accord, which aims to improve the mauri (life force) of the Manawatu River catchment such that it sustains fish species, and is suitable for contact recreation, in balance with the social, cultural and economic activities of the catchment community. An action plan for cleaning up the river was launched in June.</p> <p>The department contributed to the draft Porirua Harbour and Catchment Strategy and Action Plan, which outlines community goals and outcomes for the long-term health and sustainability of the harbour.</p> <p>A survey of estuaries in the Conservancy continued, with strong engagement from stakeholders and the community. The findings will shape future policies about the region's estuarine environments.</p>

	<p>Kiwi and other native wildlife reintroduced to the Pukaha Mount Bruce forest continue to be protected by a network of 600 traps managed by DOC in the forest, with a similar regime in place in a buffer zone, managed by Greater Wellington and Horizons regional councils. In response to the predation of kiwi by ferrets during the year, a Technical Advisory Group (TAG) comprising of field and technical staff from the three organisations was established - to ensure a systematic and coordinated approach to pest control in the forest. The arrival of the white kiwi Manukura in May capped a bumper kiwi breeding season at Pukaha and raised the profile of the forest restoration programme internationally.</p> <p>Bellbirds and whiteheads were translocated from Kapiti Island to Mana Island by DOC and the Friends of Mana Island, to establish breeding populations on the island.</p>
<p>Intermediate Outcome 3: Examples of the full range of New Zealand's ecosystems are conserved</p>	<p>A 42 ha remnant of dense, rare lowland podocarp forest in eastern Wairarapa was purchased by the Nature Heritage Fund from Alfredton farmers Bruce and Sue McKenzie, to be protected as scenic reserve. Known as Pati Tapu Bush, it is part of the Seventy Mile Bush that once stretched from Wairarapa to Hawke's Bay. The reserve contains more than 100 native plant species including <i>Dactylanthus taylorii</i> - a rare botanic treasure that dwells on the forest floor. It is also an important habitat for kereru, tui, tomtit and long-tailed bats.</p> <p>A joint project on capitalising on the natural heritage sites throughout the Wellington region is being initiated. A consultants report is being prepared for Department of Conservation/Greater Wellington Regional Council/Wellington City Council and others in March 2011.</p>
<p>Intermediate Outcome 4: A representative range of historic and cultural heritage is conserved and interpreted</p>	<p>Restoration of the historic Napier Courthouse continued during the year. The three stage work programme includes strengthening and insulating the building, improving lighting and heating, and reinstating original features.</p>
<p>Intermediate Outcome 5: New Zealanders increasingly engage in conservation</p>	<p>The revamped Pukaha Mount Bruce kiwi nocturnal house was opened by the deputy Prime Minister Bill English in January. The Pukaha Mount Bruce Board raised \$1.4 million for the redevelopment, which complements the award-winning visitor centre.</p> <p>Community volunteers, businesses and schools are assisting the department with conservation work at Onoke Spit in South Wairarapa. The 40-strong Friends of Onoke Spit have a successful partnership with neighbouring Wharekauhau Lodge, Greater Wellington Regional Council, local schools, and Palliser Estate in Martinborough, who sponsor native plantings, signage, and hands on rubbish collecting. South Wairarapa Rotary works with the group to collect rubbish, and undertake weeding and planting, and the Ornithological Society of New Zealand undertakes bird surveys and bird banding at the spit.</p>

	<p>Two “retired” takahe from Mana Island were transferred to Zealandia (Karori Sanctuary), where they are now playing a conservation advocacy and education role.</p> <p>DOC, the Wellington Hawke’s Bay Conservation Board and Greater Wellington Regional Council partnered to co-host the inaugural Encore Awards - honouring the Wellington region’s environmental restoration and conservation champions.</p> <p>South Wairarapa landowners Ed Handyside and Mike McCreary partnered with DOC and Greater Wellington Regional Council to restore the banks of the former channel of the Ruamahunga River (the Ruamahunga cut-off), within both private and conservation land in the Wairarapa Moana Wetlands Park. The ongoing project will see exotic species and weeds replaced with native plants.</p> <p>DOC continued to support the Save Our Kiwi Hawke’s Bay project, which is securing the wild kiwi population in Hawke’s Bay. A milestone was celebrated in March with the release into the Kaweka Forest Park of the 100th kiwi reared through the programme. The project is led by the Environment, Conservation and Outdoor Education Trust (ECOED) with support from the community.</p> <p>As part of the Project Kaka restoration project a group of enthusiastic volunteers is helping the department address significant pest issues in popular Donnelly’s Flat at Mt Holdsworth. The volunteers assist with ongoing trap inspection, clearing, monitoring and reporting.</p>
<p>Intermediate Outcome 6: New Zealanders have increased opportunities for recreation and outdoor activities</p>	<p>A 10-year concept plan has been developed for Holdsworth, the main entrance to the eastern side of Tararua Forest Park. Drafted by landscape architect Rachel Callaghan, it incorporates ideas from departmental employees associated with the site, and the Holdsworth advisory group, comprising community representatives. Development of the site aims to fulfil DOC and community expectations and needs, and provide a high quality visitor experience. Local bodies have been invited to contribute to the plan.</p> <p>The department is developing a Wellington-Wairarapa cycleway with Hutt Valley local authorities and Greater Wellington Regional Council. The department is plotting waypoints for directional signage using GPS.</p> <p>\$2 million was invested in capital works to upgrade recreation facilities. Work included developing Whareroa Farm near Paekakariki, which opened to the public in May; extending Holdsworth Lodge in Tararua Forest Park; opening the Te Kōpi homestead in the Aorangi Forest Park (at Palliser Bay); upgrading the Castlepoint car park and the Cross Creek track (part of the Rimutaka Rail Trail); building a visitor shelter at Boundary Stream; beginning construction of Turere Lodge in the Orongorongo Valley, installing new interpretation panels and a toilet at the Manawatu Gorge track, and cutting tracks around Ruahine Corner Hut.</p>

	<p>The opening of the 14km Pukeatua Track by Conservation Minister Kate Wilkinson in June brought the Te Araroa Trail from Cape Reinga to Bluff closer to completion. The final link of the Levin to Wellington stage of the trail, the track extends from Otaki Forks to Waikanae. It also forms part of the five-day tramp through some of the more remote parts of the Tararua Ranges from Levin to Otaki Forks.</p>
<p>Intermediate Outcome 7: Business opportunities consistent with conservation outcomes are enabled</p>	<p>A \$930,000 initial investment from the Aotearoa Foundation kick started Poutiri Ao ō Tāne, a DOC-led unique ecological and social project aimed at bringing native wildlife back into the lives of people in Hawke's Bay. Embracing the knowledge of a wide range of collaborating partners, it is hoped that many species lost to the area will return and flourish in the midst of sustainable agriculture and forestry. Volunteer opportunities include habitat restoration, species reintroductions, wide scale pest control, research, education, and communication.</p> <p>Conservation partnerships were established with a number of different companies and agencies in Hawke's Bay over the last year, including Matua Valley Wines, Opus International Consultants Ltd and KiwiRail (Ahuriri Estuary); and New World Greenmeadows, which sponsored the inaugural Hawke's Bay weed swap in June.</p> <p>The department is represented on the Aorangi Trust, an initiative driven by Martinborough wine maker Clive Paton to restore the Aorangi Forest Park and neighbouring private land. It builds on the success of the Waihora Watch group, which is restoring the area around the Waihora Stream on the park's north western boundary.</p> <p>Sponsorship from OMV, an Austrian oil company, was secured to continue the annual Cook Strait Whale Survey for three more years. A record 73 humpback whales were counted during this year's four week survey. The project is led by the conservancy's marine mammal specialist Nadine Bott and supported by the Nelson Marlborough Conservancy. It began in 2004 to assess the recovery in humpback numbers since commercial whaling ceased in New Zealand in 1964, and takes place around the peak period for whales migrating north from Antarctic waters to South Pacific breeding grounds.</p>

Working with iwi

As reported last year the Conservancy continues to work increasingly more closely with iwi as partners, especially as the Treaty of Waitangi settlement process is worked through.



Alan McKenzie
 Conservator Wellington Hawke's Bay
 20 September 2011