

**Wellington Hawke's Bay Conservation Board**  
*Te Runanga Papa Atawhai O Te Upoko O Te Ika me Te Matau a Maui*

**Annual Report to the  
New Zealand Conservation Authority  
1 July 2011 to 30 June 2012**



Serviced by  
Wellington Hawke's Bay Conservancy, Department of Conservation  
PO Box 5086, Wellington, New Zealand

# **Contents**

- 1 Introduction**
  - 2 Functions and powers**
  - 3 Coverage**
  - 4 Meetings, visits and workshops**
  - 5 Public involvement**
  - 6 Advising on implementation of the Conservation Management Strategy**
  - 7 Review of the Conservation Management Strategy**
  - 8 Advocating for conservation within the Conservancy**
  - 9 Advocating for conservation at the national level**
  - 10 Advice to the New Zealand Conservation Authority**
  - 11 Advice to the Director-General of Conservation and the Conservator**
  - 12 Conservation Week 2011**
  - 13 Liaison**
  - 14 Chairperson's Comment**
- Appendix 1: Board members' participation in Board activities**
- Appendix 2: Key achievements by the Wellington Hawke's Bay Conservancy in 2010/11**

Cover Photo: Turere Lodge, Rimutaka Forest Park

## 1. Introduction

The Wellington Hawke's Bay Conservation Board has prepared this Annual Report for the New Zealand Conservation Authority as required by Section 60 of the Conservation Act 1987. The Board also intends to distribute copies to many other individuals and organisations that may have an interest in the Board's role and activities.

This is the third report of the Wellington Hawke's Bay Conservation Board. The Wellington Hawke's Bay Conservation Board was created in July 2009 following disestablishment of the East Coast Hawke's Bay Conservation Board.

### 1.1 Members of the Board

In January 2010 the Minister of Conservation Minister announced new members and the Board grew to 12 members again.

The following table summarises the Board's membership during the 2011/12 year.

<b>Name</b>	<b>Area</b>	<b>Date first appointed</b>	<b>Term ends/ended</b>	<b>Years of service</b>
Kevin Trerise, Chair	Hawke's Bay	05/08/2010	30/06/2014	2
Helen Algar, retiring Chair	Wellington	01/09/2004	31/08/2011	8
Geoff Doring	Wairarapa	01/09/2004	31/08/2011	7
Nicky Nelson, Deputy Chair	Wellington	16/10/2006	30/06/2012	6
Rob McColl	Wellington	16/10/2006	30/06/2012	6
John Hancock	Wairarapa	01/09/2007	31/08/2012	5
Ra Pomare	Kapiti	01/09/2008	31/08/2011	3
Don Adams	Wairarapa	01/01/2011	30/06/2013	1.5
Garth Eyles	Wairarapa	01/01/2011	30/06/2013	1.5
Malcolm Guy	Manawatu	01/01/2011	30/06/2013	1.5
Anne Lawrence	Manawatu	01/01/2011	30/06/2013	1.5
Papara Carroll	Hawke's Bay	03/02/2011	Resigned 30/1/12	1.5
Doug Stevens	Wellington	01/01/2011	Stood aside until after the general election Nov 2011 and then resigned	
Richard Steedman	Manawatu	19/9/2011	30/6/2014	1
Jonathon Procter	Manawatu	19/9/2011	30/6/2014	1



Board Members - From left: Garth Eyles, Kevin Trerise (Chair), Anne Lawrence, Rob McColl, Nicky Nelson (Deputy Chair), John Hancock, Richard Steedman, Malcolm Guy, Jonathan Procter. (Absent: Don Adams, Doug Stevens)

## 2. Functions and powers

The functions and powers of the Board are set out formally in sections 6M and 6N of the Conservation Act 1987. Key roles include:

- providing advice to the Department of Conservation (DOC) and the New Zealand Conservation Authority (NZCA)
- recommending that the NZCA approves the next Draft Conservation Management Strategy (CMS)
- advocating for conservation in statutory processes and public forums.

Conservation management strategies are statutory documents which show how general policies will be implemented. They also establish objectives for the integrated management of natural and historic resources and for recreation, tourism and other conservation purposes.



### 3. Coverage

The Wellington Hawke's Bay Conservation Board's coverage extends from the bottom of the North Island to the Turakina River and inland to just north of Taihape in the west, and across to the east coast where it extends to the Mahia Peninsula. It is the same area as the Department of Conservation's Wellington Hawke's Bay Conservancy without the Chatham Islands.

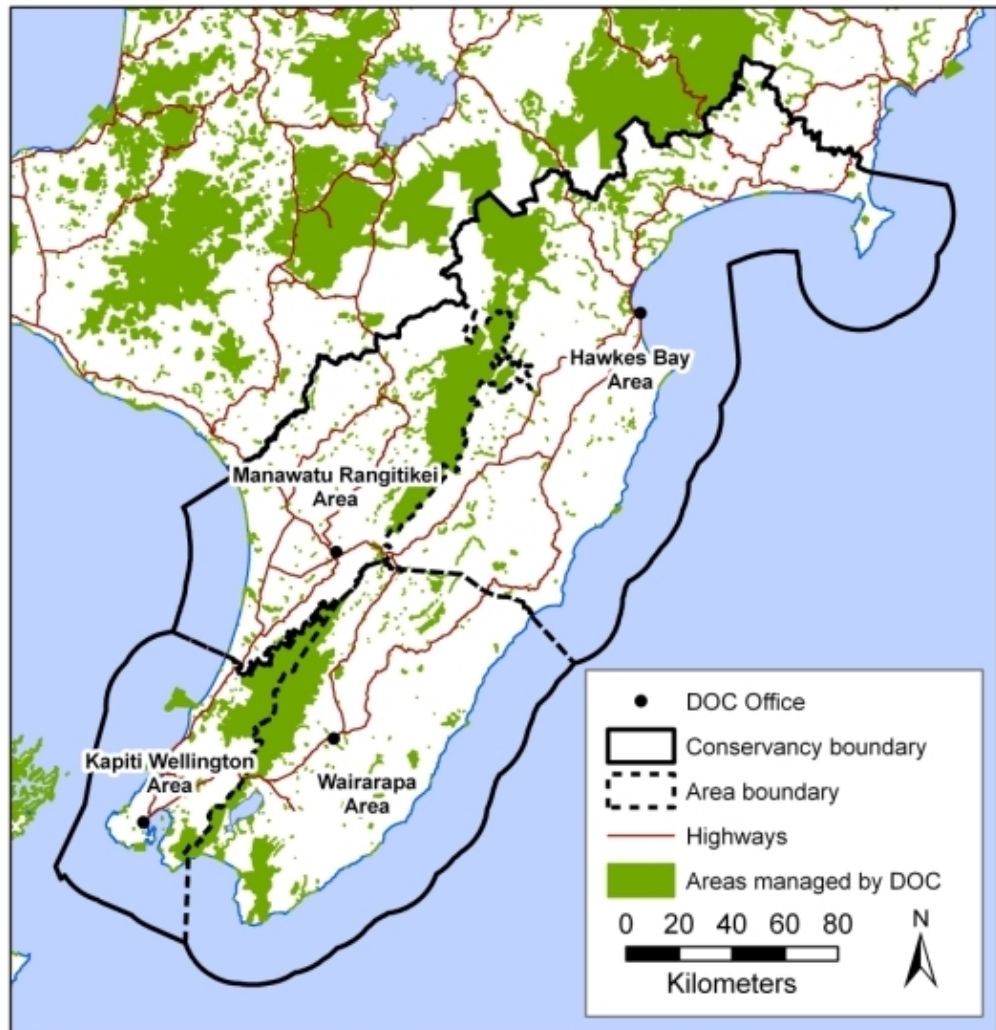


Figure 1: Map of the Wellington Hawke's Bay Conservation Board's area

#### 3.2 Key places

Some of the key places managed by DOC in the Board's area are:

Lake Wairarapa Wetlands	Puketitiri Reserves	Rimutaka Forest Park
Ahuriri Estuary	Hemi Matenga Scenic Reserve	Kaweka Forest Park

Castlepoint Scenic Reserve	Papaitonga Scenic Reserve	Tararua Forest Park
Cape Palliser	Tora Scenic Reserve	Aorangi (Haurangi) Forest Park
Pukerua Bay Scientific Reserve	Paraparaumu Scenic Reserve	Government Buildings
Otatara Pa Historic Reserve	Carter Scenic Reserve	Turnbull House
Snail Reserves, Horowhenua	Lake's Opouahi & Tutira	Dominion Observatory
Matiu/Somes Island*	Colonial Knob	Taputeranga Marine Reserve
Mana Island	Makara Coast	Te Angiangi Marine Reserve
Kapiti Island Nature Reserve	Kapiti Island North Reserve	Kapiti Marine Reserve
National Wildlife Centre (Pukaha/Mt Bruce)	Boundary Stream Mainland Island	Cape Kidnappers Gannet Colony
Waikanae Estuary	Kohanga Lakes*	Ruahine Forest Park
Putangirua Pinnacles Scenic Reserve	Turakirae Head Scientific Reserve*	Pauatahanui Inlet, Porirua Harbour
Pukepuke Lagoon*	Round Bush Scenic Reserve*	Manawatu Estuary
Manawatu Gorge Scenic Reserve.	Tawhirihoe Scientific Reserve	Moana Roa Conservation Area.

\* Have obligations associated with completed Treaty of Waitangi settlements

#### 4. Meetings, visits and workshops

During the 2011/12 financial year, the Board's formal programme comprised four meetings and four field trips.

##### 4.1 Meetings

The Board scheduled four full-day meetings:

- 6 August 2011 at Holben Pavilion, Foxton Beach.
- 5 November 2011 at Hawke's Bay Area Office, Napier.
- 18 February 2012 at the visitor centre Catchpool Valley, Rimutaka Forest Park.
- 28 April 2012 at the Wairarapa Area Office, Masterton.

##### 4.2 Field Trips.

Visits to specific locations provide opportunities for the Board to:

- become more familiar with the conservation values of key places
- discuss management challenges and approaches with DOC staff and stakeholders
- monitor progress towards the objectives in the current CMS
- identify issues that may need to be addressed during the review of the CMS.

##### 4.3 Field trip Manawatu Rangitikei Area

On 5 August 2011 the Board visited several coastal sites between the Rangitikei and Manawatu Rivers to develop understanding of the conservation values and management issues. Specific locations included: Tawhirihoe Scientific Reserve at Tangimoana, Himitungi Beach, Foxton Beach and Manawatu Estuary.

Some of the topics discussed included erosion issues, the extremely mobile dune systems threatening access and adjoining private land, the deteriorating Foxton jetty, the

ecological values of the Manawatu Estuary which has RAMSAR site status i.e a wetland of international significance.

#### 4.4 Field trip Hawke's Bay Area.

On the 4<sup>th</sup> November 2011 the Board visited the Cape Kidnappers Gannet colony and the adjacent Cape Restoration Project.

The visit was a good opportunity for the Board to observe and discuss the Department and private enterprise working together on both visitor and restoration projects.

#### 4.5 Field trip in the Kapiti Wellington Area.

On 17 February 2012 the Board walked in to Turere Lodge (Orongorongo Valley, Rimutaka Forest Park) and on the way out of the valley visited the Landcare Research Centre and Turakirae Scientific Reserve noting:

- Turere Lodge. Access to Turere Lodge was gained via Catchpool Valley which is the major access/amenity area for the Rimutaka Forest Park, activities include camping, picnics, and walking tracks.  
The Lodge has 32 bunks, in four bunk rooms, and a shared kitchen.
- Orongorongo Valley.
  - There are 52 licensed baches within the valley.
  - In 2006, North Island Brown Kiwi liberated in the Turere Catchment.
  - 1855 - Earthquake impacted on Orongorongo River changing it from narrow channel with adjacent flats to wide gravel expanse.
  - 1870 to 1890 - Possums introduced to adjacent areas.
  - 1920's - Tramping upsurge in Valley.
  - 1924 - Tunnel taking water from Orongorongo headwaters to Wainuiomata Stream water supply system opened.
- Landcare Research Station.
  - Field Station 9.5km up from mouth of Orongorongo River and 132 m above sea level.
  - 1946 - Possum research in the Orongorongo Valley first started by Les Pracy.
  - 1952 - First hut at Research Field Station built by Les Pracy using timber from old Govt Buildings.
  - 1961 - Research previously undertaken by Forest Service 1956 – 1961 taken over by Ecology Division DSIR, (later Landcare.)
  - 1973 - Accommodation building erected.
- Turakirae Scientific Reserve.

On the way to the reserve the Board had the opportunity to speak with the owner of Orongorongo Station which has been farmed since 1848 and over which is an access covenant to Turakirae Head Scientific Reserve.

At Turakirae Reserve the following was noted:

- Five earthquake raised beaches covering 7000 years of upheaval, (most recent 1855)

- The area is the site of a Fur seal haul out.
- Nationally threatened shrub (*Muehlenbeckia astoni*) occurs within the reserve.

#### 4.6 Field trip in the Wairarapa Area

On 27 April 2012 the Board visited Holdsworth Roadend concentrating on two main issues:

- Roadend development: The board inspected the present layout and was shown plans for possible future development, noting:
  - Tararua Forest Park was gazetted in 1954 becoming New Zealand's first Forest Park.
  - In 1957 the original Atiwhakatu Stream bridge (at roadend) was built by the Masterton Tramping Club replaced in 1978 with the present structure.
  - Holdsworth Lodge was opened on 17 June 1967 on land previously bought from the Automobile Association.
  - From an estimate of 2000 visitors in 1966/67 the estimate was 14,000 in 1967/68. Today's estimate is >50,000 visitors per year.
- Project Kaka (Ecological restoration project covering 22,000 ha of the Tararua Forest Park). The Board inspected volunteer trapping work on the Donnelly Flat circuit track.
  - Project Kaka is a move from a single focus on protecting forest canopy to a more ambitious ecological restoration of forest and wildlife values in Tararua Forest Park.
  - Project Kaka work at Holdsworth roadend provides an opportunity for volunteers to be involved in achieving the restoration goals.

#### 4.7 Participation and fees

Individual Board members' participation in Board activities during 2011/12 is shown in Appendix 1.

For approved Board activities, Board members are paid \$140 per day and the Board Chair \$190 per day.

## 5. Public Involvement

The Board informs and interacts with the public through forums, correspondence, its annual report and the DOC website. The Board's formal relationships with specific organisations are described in section 13.

### 5.1 Public Forum

During 2011/12, the Board welcomed individuals to the Public Forum, a session scheduled at each meeting to enable people to speak to the Board about agenda items or other conservation issues. The Board regards the Forum as an important opportunity to hear from the community and hopes to see more people take up this opportunity in 2011/12.

Matters raised by speakers who participated in these forums included the following:

- Wharf condition at the Manawatu Estuary
- Wild Animal Recovery Operations (WARO)



- Presentation from Estuary Protection Society - Hawke's Bay environmental group.
- Retention of privately owned huts in the Orongorongo Valley.

### *5.2 Correspondence*

The Board values receiving information from people who have specific interests and/or a long-term association with specific areas within the Conservancy.

### *5.3 Distribution of the Board's Annual Report*

Although the NZCA is the primary audience for the Board's annual reports, the Board circulates its Annual Report more widely to increase awareness of the Board's role and conservation issues in the Conservancy. The distribution list includes public libraries, local members of Parliament, local media and a wide range of conservation and recreation groups.

### *5.4 The Board's website*

The Board posts on its pages of DOC's website, the agendas for and minutes of its meetings, all submissions made by the Board, a document setting out its Strategies and Directions and its annual reports.

<http://www.doc.govt.nz/getting-involved/nz-conservation-authority-and-boards/conservation-boards-by-region/wellington-hawkes-bay/>

## **6. Advising on implementation of the CMS** (Section 6M of the Conservation Act 1987)

### *6.1 Current CMS*

Wellington's current Conservation Management Strategy (CMS) was approved in April 1996. Under the Conservation Act 1987, the Director-General is required to review each CMS as a whole not later than 10 years after the date of its approval. The Minister first approved an extension to June 2008, and more recently a commitment has been made to have all CMS documents delivered to the Conservation Authority by 2014.

During most of this year the Department has been in the process of a major review and restructure of all support services which included the specialist planning teams that lead CMS reviews. Once the teams were confirmed, the CMS review process commenced with six conservancies selected to be reviewed in the first round which started in April 2011. The Wellington Hawke's Bay Conservancy is in the next round of reviews which is due to start in early 2013.

The Board is responsible for monitoring the performance of the Conservancy in managing the conservation estate in the Conservancy, including holding DOC accountable for achieving the objectives/milestones in the current CMS and for providing a mechanism for the public/community to input to, comment on, or 'enquire' about the performance of DOC in the Wellington Conservancy.

### *6.2 Conservation Action Plans*

The Board has strongly supported the development of Conservation Action Plans (CAPs) which identify and prioritise conservation priorities in each Area and are an integral part of business planning for the Conservancy. A mechanism to rank the merit of conservation

projects was developed in the Conservancy with Board input and is used in developing the CAPs.

The Wairarapa, Poneke and Kapiti Area CAPS were prepared in parallel with, and are consistent with, the Preliminary Non-statutory Draft of the Wellington CMS. The Hawke's Bay CAP was developed in the same format following inclusion into the conservancy, and Manawatu Rangitikei Area was available late 2011.

In the absence of a relevant current CMS, the Board received regular reports from the Conservator, Area Managers and key technical specialists on activities, priorities and challenges in implementing current strategies and plans. This included priorities and progress in relation to one Area's CAP at each meeting. The CAPS will inform the new Wellington Hawke's Bay CMS.

**7. Review of the CMS by the Director-General**  
(Section 7H (4) of the Conservation Act 1987)

*7.1 Preliminary work for the Wellington Hawkes Bay CMS*

Work on a review of the Wellington CMS began in 2008/09. This review was undertaken by DOC people from across the Conservancy working together with the Conservation Board to set priorities, direction and forward aspirations for conservation in the greater Wellington region.

At the same time East Coast Hawke's Bay and Whanganui Conservancies were going through a similar process. The sections relating to Hawke's Bay and Manawatu Rangitikei Areas will be reviewed for incorporation in the new Wellington Hawke's Bay CMS. The addition of these two areas has more than doubled the physical size of the Conservancy and it is critical that the CMS reflects perspectives from the wide range of communities within it.

When work resumes on the new Wellington Hawke's Bay CMS all interested groups and the public will be able to comment via formal submission and hearing processes as required for the review and development of a CMS.

As part of a national programme to prepare CMS documents, teams have been set up to work through national issue sections and provide consistency on format and content. Part of this process has necessitated programming when individual CMS work will begin and Wellington Hawke's Bay Conservancy is now programmed for early 2013.

**8. Advocating for conservation within the Conservancy**  
(Section 6N of the Conservation Act 1987)

The Board considers at each meeting the opportunities and priorities for statutory advocacy and the availability of members to prepare submissions. Submissions are progressed by email between meetings and ratified at the following meeting.

*8.1 Local government plans and policies*

The Board made a submission in February 2012 on the Waipukurau & Waipawa proposed wastewater scheme consent application & assessment of environmental effects. They did not identify precisely the changes that needed to be made to this

proposal but kept the submission in more general terms seeking assurances in identified areas.

The Board has considered several local and regional planning issues that could impact on conservation lands and/or conservation matters within the Conservancy including:

- Ruataniwha Water Storage Project
- Ngaruroro Water Storage, Taharua and upper Mohaka, and the Napier City Council application to discharge sewage into Hawke's Bay.

## *8.2 Other Statutory Advocacy*

The Board prepared an advice paper supporting other boards' concerns about the SPCA's "Saving Lives" policy on capture, neuter and release of cats in urban cat colonies.

### **9. Advocating for conservation at the national level**

(Section 6N of the Conservation Act 1987)

The Board wrote to the Minister of Conservation expressing concerns about the financial restrictions being imposed on the Department in relation to the impacts that budget cuts are having or may have on operating service delivery of the Department's statutory requirements. Accordingly they advocated that the Minister does not accept that cuts should be relatively similar across all government departments and that the Minister accepts no further budget cuts for the Department of Conservation.

### **10. Advice to the New Zealand Conservation Authority**

(Section 6M of the Conservation Act 1987)

No formal advice has been sent to the Conservation Authority

### **11. Advice to the Director-General of Conservation and the Conservator**

#### *11.1 Concessions in the Conservancy*

The Board reviewed applications for and progress with concessions at each meeting and provided advice to the Conservator in accordance with an agreed trigger process. The Board continued to take a particular interest in applications to regularise arrangements for existing activities which did not have a concession in place.

#### *11.2 Project Kaka*

Rob McColl represented the Board on the steering committee established in August 2009 to plan and implement Project Kaka: Tararua Nature Recovery and reported back to each Board meeting. Intensive aerial 1080 possum and predator control over 22,000 ha in the centre of Tararua Forest Park was carried out in November 2010 and was co-ordinated with adjacent Animal Health Board bovine TB possum control operations. Volunteer groups are providing ongoing ground-based control near road-ends. Before-and-after monitoring of pests and birds has shown that possum, rat and mustelid numbers were

reduced to low levels in 2011-12 and there was an increase in breeding success of several bird species, notably rifleman, kakariki and whitehead. The monitoring did not detect evidence of 1080 impacts on birds. Landcare Research Ltd. is studying whether the Project Kaka will have benefits for the forest ecosystem as a whole and how far benefits will spread beyond the pest-controlled area. The project has received very good public support and coverage.

### *11.3 Submission on Wilderness Areas*

The Board made a submission in September 2011 on a paper from the Department on wilderness areas. The Board agreed with the view that there are significant concerns to be addressed over heli-hunting.

## **12. Conservation Awards**

The combined Greater Wellington Regional Council and Department of Conservation Encore Awards function was run on 30 November 2011 with very good attendance. Board members were involved in the judging and this was seen as a good opportunity to engage with the community.

Anne Lawrence, Board member from Manawatu, presented a Conservation Award in the Manawatu Rangitikei Area.

The inaugural Hawke's Bay Environment Action Awards were held in November 2011. The awards are held biannually and are a joint venture between the local authorities and DOC.

## **13. Liaison**

### *13.1 Fish and Game Council*

John Hancock represented the Board at the Wairarapa Fish and Game Council meetings. This has been a mixed year for Fish and Game. Fish returns have generally been good in spite of concerns about cross-blading and long-raking on some of our major rivers. Algal bloom (presumably caused by nutrient loading), is also seen as a problem.

On the game-bird front the season has been less successful. Bag numbers have been smaller raising various targets for blame including D.O.C. who is considered partly responsible for having Canada Geese removed from protection. Fish and Game would like more input into water levels around Wairarapa Moana. Weed control in this area is below what they would wish, Hornwort and Raupo making retrieval of downed birds difficult. Raupo growth has made some traditional stands un-usable.

For two organisations (Fish and Game and DOC) which have many similar objectives, I would hope that the tensions that appear between them can be alleviated in some ways by the Conservation Board.

Garth Eyles represented the Board at the Hawke's Bay Fish and Game Council meetings. He reported that Fish and Game became significantly involved in a number of environmental issues in the region, ie: they coordinated the establishment of Te Taiao Hawke's Bay Environmental Forum recognising the need for more cooperation among NGOs when responding to the increasing environmental issues in the region. Its aims are to: advocate strongly for improved natural and cultural environment, provide a forum for sharing and collaboration to raise awareness and enhance their effectiveness, identify

and promote appropriate standards for the natural and cultural environment, provide a regional contact for environmental groups, iwi, community, and statutory agencies.

### *13.2 Lake Wairarapa Co-ordinating Committee*

John Hancock represented the Board at the Lake Wairarapa Co-ordinating committee meetings. This committee has been formed as a third tier of control to Wairarapa Moana sitting below the governance committee and the management group. It is comprised of local land-owners, Fish and Game, Forest and Bird, Ducks Unlimited and the Conservation Board. Its purpose is to provide an official forum for these groups which have interest in the lake and its surrounds to discuss their concerns and have them reported back to the Governance Committee. Up to this time discussion has been about lake and surrounding lagoons water levels, access to the lake (which is seen as inadequate), irrigation take from the lake and contributing streams, management of streams and water-ways entering the lake (these subjects are seen as critical by land owners) and control of willow alder and aquatic weeds. There has been extensive restoration planting programs initiated by Ducks Unlimited, Regional Council, DOC and with the strong support of Forest and Bird, local schools and many local residents. As this area is subject to a Treaty of Waitangi claim and a proposed RAMSAR application, there is uncertainty of tenure felt by some of the committee but the general feeling is that the Wairarapa Moana project is progressing quite satisfactorily.

### *13.3 Hawke's Bay water issues*

Kevin Trerise provided a report at the August meeting covering the Ruataniwha Water Storage, Ngaruroro water storage, Taharua and upper Mohaka and the Napier City Council application to discharge sewage into Hawke's Bay. In November he reported that local Iwi were expressing concern over the Ruataniwha project and did not want the headwaters disturbed.

### *13.4 Hunting*

The Board has put special effort into gaining an understanding of tensions in the conservancy between recreational hunters and wild animal recovery operators and has endeavoured to support the conservancy in improving liaison between these groups.

## **14. Chairperson's Comment**

The 2011/12 year has been a settling in year for the Board with a large number of changes the previous year, two resignations for personal reasons and a change in Chair. Pāpara Carroll resigned during the period due to health reasons and Doug Stevens too has resigned. The Minister has indicated that no further appointments will be made in the 2012-13 year so it is possible the Board will second particular expertise as the CMS process unfolds.

The Conservancy continues to operate in the absence of an active Conservation Management Strategy (CMS). The Board takes seriously its statutory roles of recommending that the NZCA approve the next Draft Conservation Management Strategy for the Conservancy and advocating for conservation in statutory processes and public forums.

The Board continued to receive a report from one Area Manager at each meeting on progress against the Conservation Action Plans (CAPs) which reflects the conservation priorities and challenges for the Area. The Board has found these reports, and associated field trips, very useful in building members' knowledge of the conservation assets and values in the Conservancy. Throughout the year the Board has met in each of the four areas of the Conservancy.

The Board is anticipating the CMS process to commence in the Wellington Hawke's Bay Conservancy in the 2012/13 year and is looking forward to engaging with this key statutory role.

The Board has made a number of submissions to local and regional governments over the past year on issues that could impact on conservation lands and/or conservation matters within the Conservancy. The Board continues to monitor the legislation being drafted to allow for the establishment of a New Zealand Game Animal Council and the continuing changes being made in the restructurings of the Department.

The role of Conservation Boards appears to be changing as the Department changes, and we are concerned to make sure our advice and support for conservation remains useful and used. Boards have a key role as one of the channels by which the Conservator and the Area offices hear 'the community voice'; and in providing support to conservation in a way that delivers best value for the Department in times where reducing resources need to be prioritised and carefully focused.

The Board has valued the regular flow of information from the NZCA, particularly the chairperson's, Kay Booth, letters to Board Chairpersons.

I was honoured to be elected to Chair the Wellington Hawke's Bay Conservation Board in September 2011. I want to express my sincere thanks to my predecessor Helen Algar for her hard work during her tenure as Chair of the Board. I know she made a substantial contribution in working to achieve a CMS for the Conservancy and was not able to see it completed.

I would like to thank all Board members for their commitment to conservation throughout the Wellington Hawke's Bay Conservancy. Members of the Board continue to work hard for conservation, not only through attendance at Board meetings, but also through their work on subcommittees and in many cases by being involved on other community-based, conservation-related organisations.

Finally, I would like to acknowledge the staff within the Department of Conservation with whom we have worked over the past year. We have seen a number of people change roles and move onto new challenges within the Department. Special thanks to Bronwyn Bell, our Board Support Officer, and to Ian Cooksley for sharing his extraordinary knowledge and experience with the Board. Thanks to our Conservator Alan McKenzie for his work and ongoing commitment to conservation.

We look forward to having a constructive and effective relationship with the Department in the coming year.

Kevin Trerise  
Chairman of the Wellington Hawke's Bay Conservation Board



## Appendix 1: Board members' attendance at Board activities

Individual Board members' attendance at Wellington Conservation Board activities during 2011/12 is displayed in the table below:

- ✓ Present
- ✗ apologies

	Algar	Trerise	Nelson	McColl	Hancock	Adams	Eyles	Guy	Lawrence
Field trip 5 August 2011	✓	✓	✓	✓	✓	✓	✓	✗	✓
Meeting 6 August 2011	✓	✓	✓	✓	✓	✗	✓	✗	✓
Field trip 4 November 2011		✓	✗	✓	✓	✓	✓	✓	✓
Meeting 5 November 2011		✓	✗	✓	✓	✓	✓	✓	✗
Field trip 17 February 2012		✓	✓	✗	✓	✓	✓	✗	✓
Meeting 18 February 2012		✓	✓	✗	✓	✓	✓	✗	✓
Field trip 27 April 2012		✓	✓	✓	✓	✓	✓	✓	✓
Meeting 28 April 2012		✓	✓	✓	✓	✓	✓	✓	✓
<b>Total Meetings (4)</b>	<b>1</b>	<b>4</b>	<b>3</b>	<b>3</b>	<b>4</b>	<b>3</b>	<b>4</b>	<b>2</b>	<b>3</b>
<b>Total Field Trips (4)</b>	<b>1</b>	<b>4</b>	<b>3</b>	<b>3</b>	<b>4</b>	<b>4</b>	<b>4</b>	<b>2</b>	<b>4</b>

	<b>Carroll</b>	<b>Procter</b>	<b>Steedman</b>	<b>Stevens</b>
Field trip 5 August 2011	✓	n/a	n/a	n/a
Meeting 6 August 2011	✓	n/a	n/a	n/a
Field trip 4 November 2011	✓	✓	✓	n/a
Meeting 5 November 2011		✓	✓	n/a
Field trip 17 February 2012			✓	x
Meeting 18 February 2012		✓	✓	x
Field trip 27 April 2012		✓	✓	x
Meeting 28 April 2012		✓	✓	x
Total Meetings (4)	<b>1</b>	<b>3</b>	<b>3</b>	<b>0</b>
Total Field Trips (4)	<b>2</b>	<b>2</b>	<b>3</b>	<b>0</b>

## Appendix: Conservancy achievements in 2011/12

<b>Department of Conservation Strategic Direction</b> <i>New Zealanders gain environmental social and economic benefits from healthy functioning ecosystems, from recreation opportunities, and from living our history.</i>	
Intermediate outcomes	Activities in 2011/12 which advanced the department's strategic direction
<p>Intermediate Outcome 1: The diversity of our natural heritage is maintained and restored</p>	<p>The Poutiri Ao o Tane project is developing well and expanding over a wider area to include more private land. A lot of planning and preparation work was completed this year to allow the next phase of species reintroductions, corporate partnerships, and increased community involvement.</p> <p>Fencing of high value conservation assets such as Pukaha Mount Bruce, Himatangi Scientific Reserve, Ahuriri Estuary, Round Bush/Omarupapako, and Wairarapa Moana has continued throughout the year. This work is often undertaken in conjunction with regional councils and community groups and sometimes sponsored by business</p> <p>An intensive pest control operation is underway in the Manawatu Gorge Scenic Reserve, contributing to the multi-agency Manawatu Gorge Biodiversity Project. The on-going ground-based operation will reduce possum and rat numbers to very low levels and allow native bird populations to prosper.</p> <p>Intensive predator control continues within and surrounding the Pukaha Reserve, Boundary Stream and Project Kaka in the Tararuas, protecting kaka, kokako and kiwi together with other forest birds. Predator control is strongly supported by regional councils</p> <p>The department has purchased of 17.5 hectares of land adjoining Lake Papaitonga Scenic Reserve which is crucial to the restoration and on-going management of water levels in the lake. With the legal processes now complete, DOC, iwi, community, local businesses and are working together to produce a restoration plan for the lake and surrounding reserve.</p>
<p>Intermediate Outcome 2: Our history is protected and brought to life</p>	<p>A restoration plan has been developed, in collaboration with the Ministry of Culture and Heritage, for a pre WW1 gun emplacement at Fort Balance on Miramar Peninsular. Negotiations are underway with external parties to fund the implementation of the restoration plan.</p> <p>Heritage assessments are completed for Whareroa Farm and a whaling station on Kapiti Island. These assessments define the values and inform future protection and/or restoration</p>

	plans.
Intermediate Outcome 3: More people participate in recreation	<p>A new walking track has been built in the Waikanae Scientific Reserve incorporating three large bridges and new boardwalks, the new length of track links Otaihanga and Paraparaumu reserves, forming part of the Te Araroa trail.</p> <p>The new 32-bunk Turere Lodge was quickly booked out for most weekends for the remainder of the year when it went onto the DOC booking system at the end of September.</p> <p>A significant weather event damaged many recreation facilities in the HB last winter and a significant amount of effort went into restoring access to recreation hot spots – a huge slip at the Morere Scenic Reserve was cleared allowing water to flow again, Cape Kidnappers track was re-established and the Te Angiangi MR was reopened.</p> <p>An increasing number of remote huts in the Tararua and Ruahine Forest Parks receive maintenance from community groups and negotiations are currently in progress for some others. This support allows the on-going public access to facilities that would otherwise not be maintained.</p>
Intermediate Outcome 4: More people engage with conservation and value its benefits	<p>The Living Legends project completed the first round of five annual plantings at four locations across the conservancy. Over 15,000 native trees were planted by more than 600 volunteers, attracting many new people to contribute their time and energy to a conservation project. This nationwide project, a partnership between Project Crimson, DOC, the Tindall Foundation and Meridian Energy, is a legacy of New Zealand hosting the 2011 Rugby World Cup.</p> <p>Ongoing work by Wairarapa Moana board has resulted in successful funding applications for restoration and recreation initiatives at the Wairarapa Moana wetlands.</p> <p>Several new or re-vitalised groups are contributing to or leading a variety of restoration and species recovery projects. In particular the South Wairarapa Biodiversity Group, projects associated with Poutiri Ao O Tane in Hawke’s Bay, several pest trapping groups in the Ruahine catchments, the Manawatu Gorge, Donnelly’s Flat within Project Kaka, and many local freshwater initiatives aiming to clean up waterways across the whole conservancy. This is in addition to the multiple community groups that lead or contribute to long term projects.</p> <p>35,000 people visited Pukaha Mount Bruce this year compared with 23,200 last year. The increased visitation is attributed to capital investment from the Pukaha Mount Bruce Board and DOC as well as the arrival of the white kiwi Manukura and Mauriora.</p>

<p>Intermediate Outcome 5: More business opportunities delivering increased economic prosperity and conservation gain</p>	<p>The Aorangi Forest Restoration Trust has been launched to enhance the natural heritage values of the Aorangi Forest Park and the private land surrounding it by eradicating pests from the forest and surrounding farmland. This is a collaborative project with local landowners, hunters and businesses, Greater Wellington Regional Council and the Animal Health Board. The aim is to reintroduce locally extinct species, such as kiwi, whio, weka and other forest birds which once graced the Aorangi forest.</p> <p>A formal collaboration in the management of natural resources and recreation across the lower North Island has been developed between Hawke's Bay, Greater Wellington and Horizons Regional Councils and DOC. Known as Nature Central; it provides a framework for the agencies to plan work together and an action plan to deliver on specific initiatives over the next year.</p> <p>Restoration momentum at Onoke Spit has seen both the community and Wairarapa businesses getting further involved. Wharekahau and Palliser estate continued their sponsorship of Onoke Spit.</p>
---	---

*Working with iwi*

The Conservancy continues to work increasingly more closely with iwi as partners, especially as Treaty of Waitangi settlement processes are worked through. Successful collaborations between hapu, iwi and DOC relating to development of new facilities and interpretation include Otatara Pa, Castlepoint, Oroua road end, Te Reinga Falls in Wairoa and Boundary Stream.



Ben Reddiex  
Acting Conservator Wellington Hawke's Bay  
16 November 2012