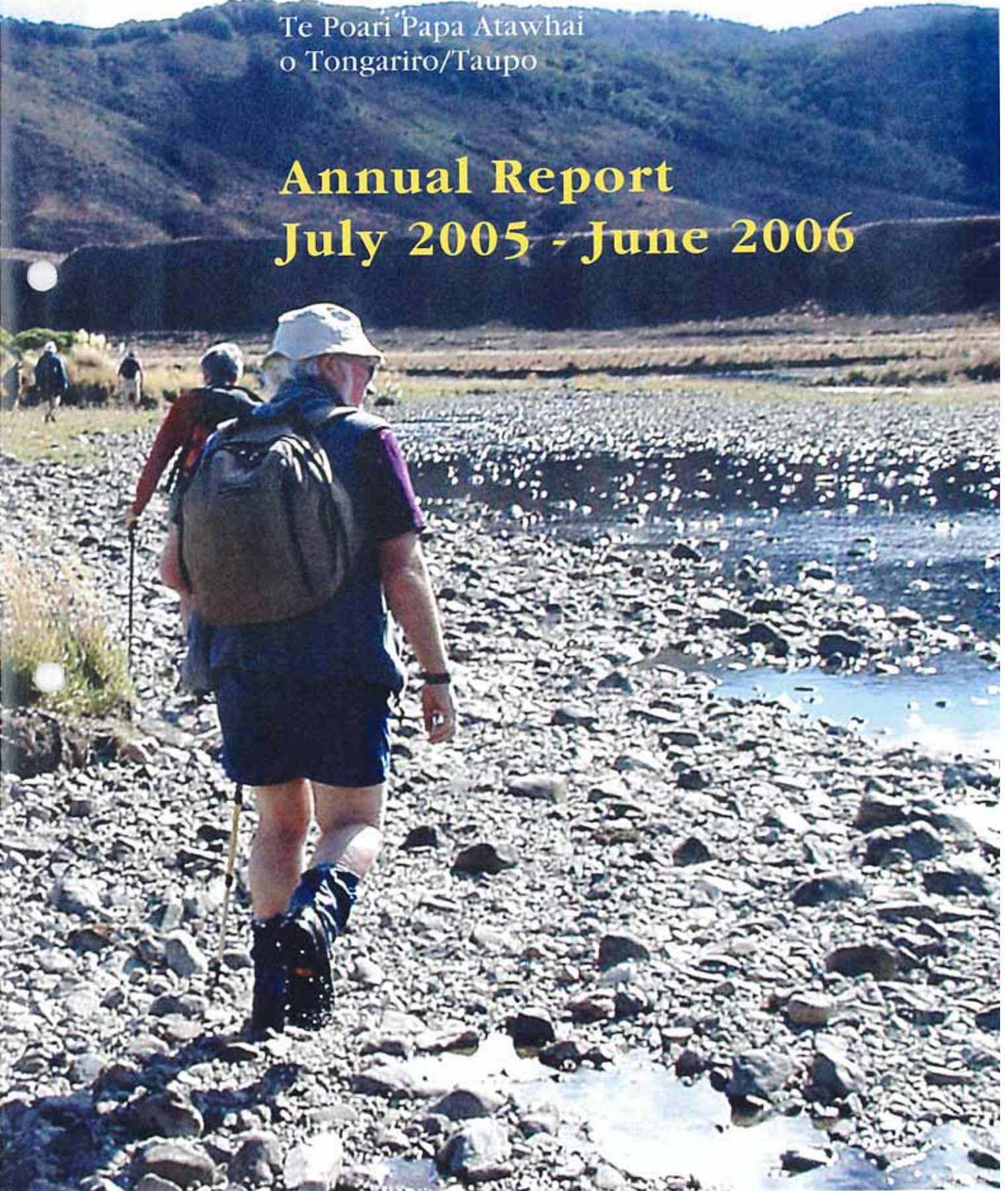


# Tongariro/Taupo Conservation Board

Te Poari Papa Atawhai  
o Tongariro/Taupo

**Annual Report**  
**July 2005 - June 2006**

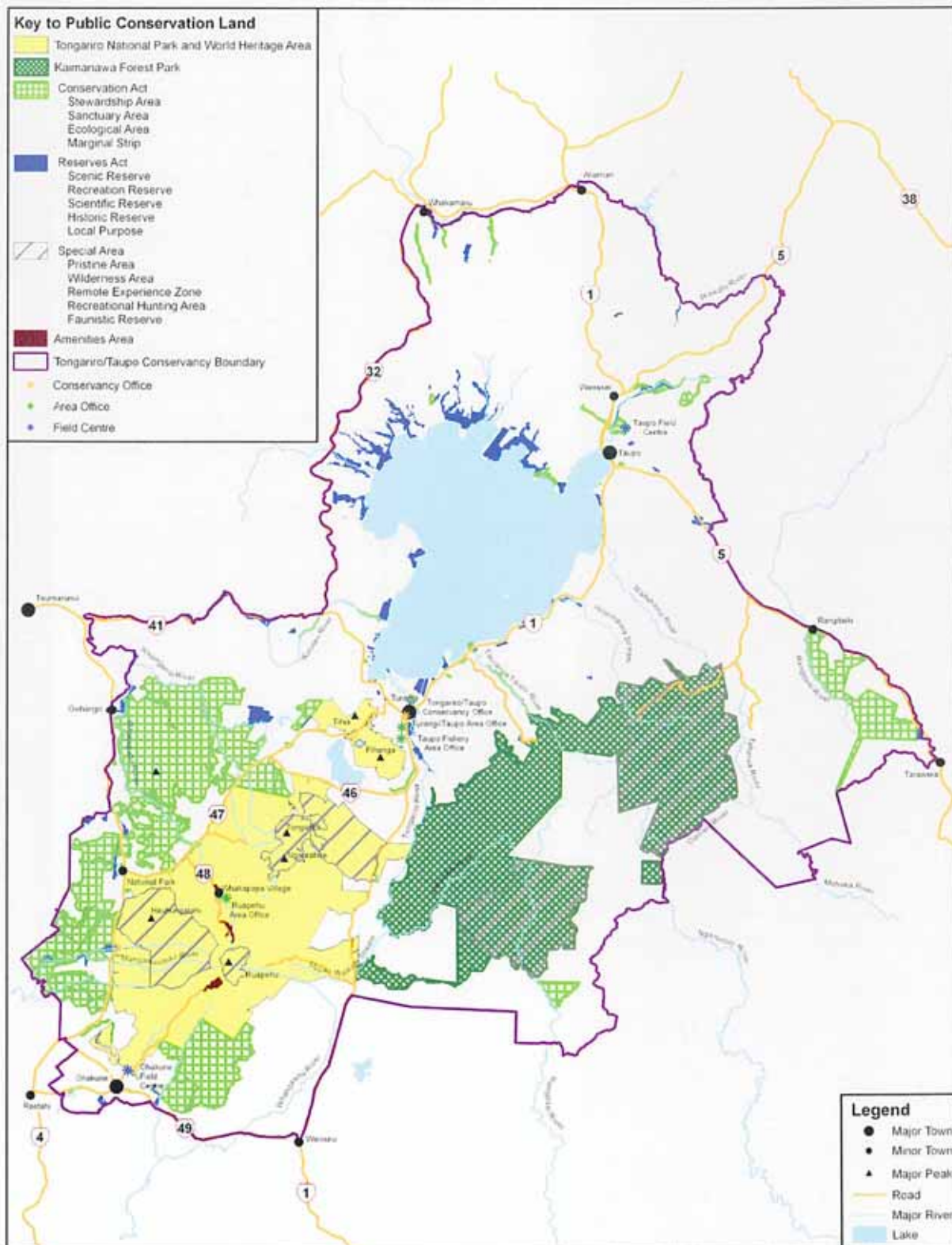




# Tongariro/Taupo Conservancy

## Key to Public Conservation Land

- Tongariro National Park and World Heritage Area
- Kaimanawa Forest Park
- Conservation Act
  - Stewardship Area
  - Sanctuary Area
  - Ecological Area
  - Marginal Strip
- Reserves Act
  - Scenic Reserve
  - Recreation Reserve
  - Scientific Reserve
  - Historic Reserve
  - Local Purpose
- Special Area
  - Pristine Area
  - Wilderness Area
  - Remote Experience Zone
  - Recreational Hunting Area
  - Faunistic Reserve
- Amenities Area
- Tongariro/Taupo Conservancy Boundary
- Conservancy Office
- Area Office
- Field Centre



- ### Legend
- Major Town
  - Minor Town
  - Major Peak
  - Road
  - Major River
  - Lake



# Tongariro/Taupo Conservation Board

Te Poari Papa Atawhai  
o Tongariro/Taupo

Annual Report  
1 July 2005 - 30 June 2006

Presented to the New Zealand Conservation Authority  
pursuant to Section 60 of the Conservation Act 1987

Serviced by  
Department of Conservation  
Private Bag  
Turangi, New Zealand

Conservancy Board  
Annual Report

The Board is pleased to present this report to you, detailing the work of the Conservancy Board over the past year.

Annual Report  
July 2005 - 30 June 2006

The Board is pleased to present this report to you, detailing the work of the Conservancy Board over the past year.

**Cover Photo:** Board members and conservancy staff in Kaimanawa Forest Park during a field trip. Led by Dave Lumley, Turangi/Taupo Area Manager, the members were flown into the Boyd airstrip where they then started on a five hour tramp to the Oamaru Hut before flying back to Taupo.  
Photo: Bruce Jefferies

© Copyright 2006, New Zealand Department of Conservation

ISSN 1176-6735

# INTRODUCTION

## Functions

The Tongariro/Taupo Conservation Board is an independent advisory body, appointed by the Minister of Conservation. The Board has a number of statutory roles, which include:

- the development of the Tongariro/Taupo Conservation Management Strategy (CMS) and the recommendation of this to the New Zealand Conservation Authority (NZCA) for approval
- advising the Department of Conservation and the NZCA on how conservation management strategies and plans will be put into practice
- monitoring the implementation of the CMS
- the approval of Conservation Management Plans
- the recommendation of National Park Management Plans to the NZCA for approval
- advising the Department of Conservation and NZCA on conservation matters, proposed changes to the status of land with national and international significance, and new walkways,
- liaising with the Fish and Game Council, and
- carrying out other powers delegated to them by the Minister of Conservation, the Conservation Act or any other Act.

## Area of Responsibility

The Tongariro/Taupo Conservancy covers 780,000 hectares, of which approximately 217,000 hectares is administered by the Department of Conservation. It is also the area of responsibility for the Tongariro/Taupo Conservation Board (refer to the Map). The conservancy is unique in that it has no ocean coastline and includes the Lake Taupo sport fishery.

The Conservancy is dominated by the volcanic landscape of Tongariro National Park, the beech forest and tussock ranges of Kaimanawa Forest Park and by New Zealand's largest lake, Lake Taupo. Tongariro, Erua and Rangataua Conservation Areas to the east and south of the national park, play a valuable part in terms of their ecological features and recreational opportunities.

Tangata whenua - Ngati Tuwharetoa, Ngati Rangi and Ngati Tahu Iwi - have long had a special relationship and history with the mountains, lakes, waterways and geothermal features of this area. Tongariro, New Zealand's first national park, grew from the Ngati Tuwharetoa gift of its mountains to the nation in 1887. The park received World Heritage status in 1988 for natural landscape values and in 1993 for its cultural



landscape values, recognising the special significance of the mountains to Tuwharetoa and Wanganui iwi.

The Conservancy contains many rare, uncommon, vulnerable or threatened native plants, birds, communities and ecosystems. Managing these in light of weeds, predators, fires and other threats remains an ongoing challenge.

Lake Taupo and its tributaries provide opportunities for world-class fishing and numerous other forms of water recreation. Tongariro/Taupo Conservancy manages the sport fishery in partnership with Ngati Tuwharetoa, as prescribed by the Maori Land Amendment and Maori Land Claims Adjustment Act 1926.

The landscape of the area is unique in New Zealand and large numbers of national and international visitors come here for sightseeing and recreation. Tongariro National Park is the most visited national park in New Zealand and numbers are expected to rise further. In contrast, the surrounding mountain ranges retain a feeling of remoteness and isolation which is increasingly sought by recreationists - New Zealanders in particular.

A large number of issues occur on these lands which are of interest to the Board. These include:

- management of plant and animal species such as the blue duck (whio), kiwi (western North Island Brown), and 2-3 species of mistletoe.
- management of recreational facilities such as huts and tracks
- management of historic sites
- concession activities, including those relating to recreation and tourism, grazing, research, and leases.

The Tongariro/Taupo Conservation Board has a responsibility to the people of the Tongariro/Taupo district, and the wider New Zealand population, to ensure these lands and the biodiversity which they contain are protected and enhanced.



**Right:** White Mistletoe  
Photo: G.M. Crowcroft

## Membership

The names, locations of the members of the Tongariro/Taupo Conservation Board, and attendance at meetings from 1 July 2005 to 30 June 2006 were as follows:

Lynette Brown*	Taupo	0
Sue Carson#	Rotorua	5
Bettine Davies*	Taupo	1
Ngaire George	Rotorua	5
Sarah Gibb#	Taupo	5
Maree Gurney	Marton	5
Bruce Jefferies	Taupo/Wanaka	4
Murray McKee*	Wellington	1
Betsan Martin#	Wellington/Te Rangiita	4
Les Molloy#	Wellington	5
Richard Pirere	Ohakune	4
Brian Robinson	Taupo	6
Warwick Silvester	Hamilton	6
Tumu te Heuheu	Taumarunui	3
Alex Wilson	Rotorua	5

\*Members whose terms expired at 31 August 2005

#Members who were newly appointed 1 September 2005



**Right:** Tongariro Taupo Conservation Board  
Back Row from Left:  
Richard Pirere, Betsan Martin, Warwick Silvester, Sarah Gibb, Alex Wilson, Brian Robinson  
Front Row from Left:  
Maree Gurney, Les Molloy  
Absent: Ngaire George, Sue Carson, Tumu te Heuheu, Bruce Jefferies  
Photo: Jo Hood



## Conservation Board Meetings

The Tongariro/Taupo Conservation Board held six formal meetings, including two field inspections, during the reporting period.

### 19 August 2005

This meeting was held at the Grand Chateau, at Whakapapa. The Board had a presentation from Greg Carylton and Garrick Murfitt of Horizons Regional Council outlining the development of a new plan (One Plan) to help manage natural resources in the Manawatu-Wanganui region. The Board also had a presentation from Mike Mohi on Nga Whenua Rahui. There were two CMS monitoring report presentations. The first on Recreational Use Management (excluding skiing) and Visitor Facilities and the second was on Protected Species - Flora.

### 7 October 2005

This meeting was held at the Department of Conservation office in Taupo. This was the first meeting for new members Sarah Gibb, Sue Carson and Betsan Martin. The Board had another two CMS monitoring report presentations. The first one was the continuation of the Recreational Use Management report from the last meeting. The second was on Kaupapa Maori. The Board also received a proposal from Taupo District Council on a draft proposal for a camp ground at Five Mile Bay. The Board also had a site visit out to Whakaipo Bay. Ian Maxwell from Fish and Game attended the meeting and gave the Board members an update on their work programme.



**Right:** A site visit - on the way out to Whakaipo Bay, looking at local development.

### 2 December 2005

This was a regular meeting held in Turangi. Many Board members had attended the Conservation Awards the night before. Paul Blaschke presented the Board with an update on the Tongariro Crossing Survey that was being undertaken. The Board also received the final presentation on the CMS monitoring report on Recreational Use Management. The Board received a brief on the up and coming Summer Programme.



### **10 February 2006**

The Board meet in Taupo at the Lakeland Resort. One of the first items on the agenda was round table introductions, from Board members as well as Department staff. Karen Schumacher (Chairman) and Kelly O'Hara (Board Support) from the Taranaki/Whanganui Conservation Board sat in on our meeting. The CMS monitoring report presentation at this meeting was on Statutory Planning.

### **17 March 2006**

Many Board members attended a full day field trip into the Kaimanawa Forest Park. The members were flown into the Boyd airstrip where they then started on a five hour tramp to the Oamaru Hut and were flown back to Taupo.



**Right:** A field trip into Kaimanawa Forest Park, Boyd Airstrip.  
Photo: Bruce Jefferies

### **3 and 4 April 2006**

Many Board members attended the hearings and also a joint Board/staff workshop for the Kaimanawa Forest Park Management Plan.

### **7 April 2006**

This was a regular meeting in Turangi. The Board received two CMS monitoring report presentations. The first on Non-Recreation Concessions and the second on Achieving Conservation on Areas Not Administered by the Department.

### **16 June 2006**

The Board met in Turangi. Among the topics discussed were the Departments new Strategic Directions, an update on Didymo, an update on the One Plan from Horizons Regional Council and a discussion on Carla Wilson's research on Conservation Boards. The CMS monitoring report received was on Visitor Information and Community Involvement.

## STATUTORY FUNCTIONS - CONSERVATION ACT

### Conservation Management Strategy

The Tongariro/Taupo Conservation Management Strategy was approved in May 2002 and has a lifetime of ten years.

The Board has initiated the process of CMS monitoring reporting which has been ongoing since 2004. The Board was briefed on seven of the 21 sections of the CMS. The sections covered were:

- Recreational Use Management (excluding skiing) and Visitor Facilities - this was a very large subject so ended up being split into three sections over three Board meetings. The sections were:
  - Fostering Recreational Use of Public Conservation Land
  - Recreation Use
  - Visitor Facilities

The Board welcomed the outcome of the major Recreation Opportunities Review completed in 2005. All shared the Department's relief at the gradual transition over the next 10 years from a situation where recreational facilities were under-maintained because of insufficient funding, to deferred maintenance being progressively addressed and standards improved. The prioritisation of visitor sites through the Visitor Assets Management System (VAMS) had brought a necessary rigor to the process.

- Protected Species - Flora

Given the low level of professional staffing allocated to endangered plant species the report presented to the Board was both comprehensive and outstandingly valuable for the picture it gave of the conservation challenges facing the conservancy.

- Kaupapa Maori

Recommendations from the Board on this report were:

That the Conservation Board meets with Ngati Rangi and The Tuwharetoa Maori Trust Board, on a regular basis, to discuss issues and to facilitate a better understanding of these issues, and

So that the Kaupapa Atawhai Manager can operate effectively in his role, the Board needs to continue its support.

- Statutory Planning

Board conclusion: The Department has performed well in this area of statutory planning relative to the CMS objectives. It has prioritised its involvement in statutory advocacy and must do this through the resource consent process. It will clearly be aided by setting the Conservancy's guidelines for best practice land development. The Board also agreed that future CMS's must contain directions for prioritisation, outcomes sought and performance indicators in each area so that performance can



be easily assessed and staff are quite clear on what is required from assessment procedures.

- **Non-Recreation Concessions**

The Board congratulated the Department for its willingness to work with applicants to reach the best result for all parties. The Board requested that a record be kept of the number of consultations taken with people over non-recreation concession applications, who then choose not to place an application, accepting it probably wouldn't be approved. This measure would be interesting to show the time and advice given to this area of work.

- **Achieving Conservation on Areas Not Administered by the Department**

We have not had the Board's response to this report yet.

- **Visitor Information and Community Involvement.**

We have not had the Board's response to this report yet.

### **Change of status or classification**

There has been no progress on the addition of Rangataua Forest to the Tongariro National Park or the gazettal of Tongariro Forest as a conservation park. These areas are currently subject to a Treaty of Waitangi claim.

The gazettal of the proposed scenic reserve at Huka Falls is currently on hold due to outstanding Treaty issues. Alum Lakes and Craters of the Moon will not be gazetted as scenic reserves and the day to day management of Craters of the Moon has been handed back to the Commissioner of Crown Lands.

### **Advice on Other Conservation Matters**

The Board was consulted by or gave advice to the Department and NZCA on the following:

#### **Concessions**

The Board continued to provide advice to the Department on a number of concession applications that were forwarded to the Board if the approval criteria mechanisms were met. The department continued to provide a summary of concessions currently being processed at Board meetings.

The concessions considered by the Board during this report period include the following:

#### Jolly and Allingham Limited

This application was for a lease for their activities that are conducted on the Taupo Landing Recreation Reserve. This was a reapplication as their current concession was due to expire. The Board did not have any issues with this application.

#### Taupo Launchmen's Association Inc

This application was a reapplication for a lease for their activities conducted on the Taupo Landing Recreation Reserve. The Board had no issues with this application.

#### Taupo Float Plane

This was a reapplication for the existing activities carried out at the Taupo Landing Recreation reserve. The Board had no issues with this application.

#### Taupo Te Kohanga Reo

This application was for a lease to locate the kohanga on part of the Scannell Street Local Purpose Reserve. The Board had no issues with this application.

#### Institute of Geological and Nuclear Sciences

The application was for a licence for the proposed installation of Lahar monitoring equipment in the Whangaeahu Valley within the Tongariro National Park. The Board had no concerns with this application as long as the intended site is agreed with the Department.

#### Contact Energy

Application for a licence for their activities located on the Aratiatia Recreation Reserve. The Board had no concerns with this application.

#### John Blackburn

This is a high impact collection and research application. The Board has not yet made a decision on this application.

#### **Liaison with Fish and Game Council**

An Eastern Fish and Game Council representative continues to be informed of the Board's work through agenda papers and minutes. They also attend one Board meeting a year to give the board an update on current issues.

### **Powers of Boards**

#### **Conservation Advocacy**

When appropriate the Board has become involved in advocating for conservation mainly through submissions on resource consents, or through regional and district plans.

The Boards Statutory Planning subcommittee identify those consents with likely significant impacts on conservation values and then made a decision on whether or not to make a submission.

The Department kept the Board regularly informed about planning issues through regular reports at Board meetings.



The Board has made submissions on the following:

#### Consultation for Kinloch Infrastructure Upgrade and Expansion

Harrison Grierson forwarded a draft resource consent application and assessment of environmental effects to the board for comments. Some of the concerns the Board had were:

- Discharge of Stormwater
- Use of aerobic bacteria not just in the treatment plant but also in the soils of the discharge area.

The Board sent comments on the draft application back to Harrison Grierson. The Board received comments back and a pre-hearing meeting led to improved plans for stormwater and wastewater treatment.

#### Environment Waikato Proposed Regional Plan - Variation No. 5 Lake Taupo Catchment

The Board submitted on the proposed plan. The Board raised the following concerns:

- Suggested 20% figure for the reduction of nitrogen is far to low
- Insufficient monitoring of the Lake including the near shore environment
- Pressure put on central government to accept additional responsibility for crown owned land.

The Board did support the initiatives that will prevent on-going pollution and nutrient enrichment of Lake Taupo as part of a long term strategy.

The Board made a number of further submissions in support of other submissions, and received support from other submitters. Hearings were held in May.

#### Taupo District Council - Waste Water

The Board submitted against this resource consent application for an extension to the waste water plant. Some of the Boards concerns included:

- Description of proposed activity
- What alternatives were considered
- Effect on soil
- Effects in groundwater.

TDC has now decided to withdraw the proposal for an extension of the current wastewater treatment site and search for better additional areas.

## **Appointment of Committees**

The following Board subcommittees functioned from 1 July 2005. After the appointments of new Board members in August 2005, membership of the committees was revised and approved at the February 2006 meeting. Members whose term expired at 31 August 2005 are marked with an \*. Members who were newly appointed 1 September are marked with an #.

### **Concessions**

Brian Robinson (facilitator), Richard Pirere, Ngaire George, Lynette Brown\*, Sarah Gibb#.

### **Crater Lake**

Murray McKee\* (facilitator), Warwick Silvester (new facilitator), Brian Robinson, Richard Pirere, Betsan Martin#.

### **Management Planning**

Warwick Silvester (facilitator for TNPMP), Murray McKee\*, Tumu te Heuheu, Les Molloy (facilitator for KFPMP), Bruce Jefferies, Maree Gurney, Betsan Martin#.

### **Statutory Planning**

Brian Robinson (facilitator), Bruce Jefferies, Lynette Brown\*, Bettine Davies\*, Sue Carson#, Sarah Gibb#, Betsan Martin#.

### **CMS Monitoring**

Les Molloy (facilitator), Murray McKee\*, Bettine Davies\*, Brian Robinson, Sue Carson#, Sarah Gibb#.

### **Recreation**

Bruce Jefferies (facilitator), Les Molloy, Maree Gurney, Sarah Gibb#.

## **OTHER RESPONSIBILITIES UNDER THE CONSERVATION ACT**

### **Co-opting Members of the Board**

No members were co-opted on to the Board this year.

## **BOARD FUNCTIONS UNDER THE NATIONAL PARKS ACT**

The Board and the Department have worked on the Tongariro National Park Management Plan review process during 2005/2006 and look forward to it being signed off by the authority in the coming year.



## BOARD RESPONSIBILITIES UNDER OTHER ACTS

### Walkways Act 1990

No actions were taken by the Board under the New Zealand Walkways Act 1990.

### Reserves Act 1977

The Board responded to all concession applications, where they involved reserves, in terms of the Reserves Act 1977.



**Right:** Snow capped mountains.  
Photo: R.A.H. Hood

## LIAISON

All Board members receive the minutes of the New Zealand Conservation Authority meetings. Through the year contact has been maintained with NZCA liaison member John Nankervis who attended the Board's December meeting.

Agendas and minutes from neighbouring conservation boards are provided to individual liaison members who raise items of relevance and occasionally attend other boards' meetings.

The Board continues to liaise with numerous organisations including:

Bike Taupo;	Ruapehu Alpine Lifts;
Eastern Regional Fish & Game Council;	Ruapehu District Council;
Environment Waikato;	Ruapehu Mountain Clubs Association;
Farm Environment Award Trust;	Taupo District Council;
Federated Mountain Clubs; Genesis;	Taupo-nui-a-Tia Management Board;
Lakes and Waterways Action Group;	Taupo-nui-a-Tia 2020;
Lake Taupo Development Co; Mighty River Power;	The Grand Chateau;
Ngati Hikairo ki Tongariro Trust;	Tongariro National Trout Centre Trust;
Ngati Rangi Trust;	Tongariro Natural History Society;
NZ Forest Managers;	Tongariro River Advocates Inc.;
Royal Forest and Bird Protection Society	Tuwharetoa Maori Trust Board.

**Right:** The eastern bank of the Oamaru River taken from the Oamaru Flats upstream of Oamaru Hut during the board field trip into the Kaimanawa Forest Park. This area is private land and just downstream is the private Oamaru Airstrip.  
Photo: Bruce Jefferies



## THE BOARD'S 2005/2006 FINANCIAL YEAR

### Tongariro/Taupo Conservation Board

#### 2005/2006 Expenditure

Resource	Expenditure
Board Member Fees	16,645.00
Postage/Freight & Courier	584.00
Phones/toll/faxes	690.00
Domestic Travel - Airfares	246.00
Domestic Travel - Other Cost	13,338.00
Office Supplies	764.00
Professional Fees	150.00
Printing and Publishing	992.00
Catering & Entertainment	2,694.00
Ex-Gratia / Koha	0.00
<b>Total</b>	<b>36,103.00</b>

#### CHAIRPERSON'S REPORT

Three members were farewelled at their last meeting in August 2005. Lynette Brown and Bettine Davies had served on the Board for three years while Murray McKee completed a second term of three years. I would like to thank them for their services and contribution to Board work.

Board members would like to acknowledge the Conservancy staff who continued to provide the Board with a high standard of timely and professional advice. Area Office staff involved in hosting the Board



on its field trip into the Kaimanawas, have done this with enthusiasm and have provided opportunities for members to view the conservation work being done and gain an insight into some of the issues that they face. Special thanks are due to Jo Hood (Board Support Officer), Paul Green (Conservator), Nic Etheridge (Community Relations and Technical Support Manager), Jim Maniapoto (Kaupapa Atawhai Manager) and Ro Cudby (Planner) and the Community Relations and Technical Support team for their input and guidance during the year. Best wishes from the Board were extended at farewells for Sean Goddard (form Community Relations and Technical Support Manager) and Mark Davies (Ruapehu Area Manager).

I would like to thank the board members for the contribution they have made to ongoing conservation issues which the Board has dealt with. The Board has continued to contribute positively to the Tongariro/Taupo communities through quality advocacy. This has resulted from the use of the skills and knowledge of members, their willingness to engage, when necessary, in robust debate and their appreciation of the value of our special landscapes and ecosystems.

It has been a busy year as the Board has managed its responsibilities and priorities. A number of issues have been worked through in the last year and the Board looks forward to the challenges of the coming year, particularly the continuing review of the Kaimanawa Forest Park Management Plan.



Alex Wilson  
Chairperson

### **Adoption of Report**

**Moved:**

*That the Tongariro/Taupo Conservation Board adopt the annual report for 2005/2006 and forward it to the New Zealand Conservation Authority by 31 August 2004, as required under section 60 of the Conservation Act 1987.*

Sarah Gibb/Brian Robinson  
Carried  
18 August 2006