

Southland Conservation Board Te Rōpū Atawhai o Murihiku

Annual Report

1 July 2018 – 30 June 2019



ISBN 1172-9198 (print)
ISBN 1179-4224(online)

Front Cover: The Southland Conservation Board and Department of Conservation Staff at Ngapunatoru Glacier, December 2018

Southland Conservation Board Te Rōpū Atawhai o Murihiku Annual Report

1 July 2018 – 30 June 2019

Presented to the New Zealand Conservation Authority
pursuant to Section 6 (O) of the Conservation Act 1987

Published by
Southland Conservation Board
c/- Department of Conservation
Po Box 743 Invercargill 9840
southlandconservationboard@doc.govt.nz

Contents

Contents	1
1. Chairperson’s report.....	2
2. Introduction.....	3
3. Conservation Board Region.....	4
3.1 Conservation features of the Area.....	5
4. Board Functioning.....	6
4.1. Board Functions Under Section 6m of the Conservation Act 1987	6
4.2. Powers of the Board under Section 6n of the Conservation Act 1987.....	6
4.3 Board Functions under the National Parks Act 1980	6
4.4 Board Membership.....	7
4.5 Members Profiles	7
4.6 Board Meetings	10
4.7 Attendance.....	11
4.8 Board Committees and Representation.....	11
4.9 Representation.....	12
4.10 Training for members.....	13
4.11 Community and DOC Involvement in Board Meetings.....	13
4.12 Annual Work Plan.....	13
4.13 Field Trips and site inspections.....	14
5. Statutory activity.....	17
5.1 Conservation Management Strategy (CMS).....	17
5.2 Management plans	17
5.3 Implementation monitoring.....	17
6. Advice and Advocacy.....	18
6.1 Liaison.....	18
6.2 Other Conservation Boards liaison.....	18
6.3 New Zealand Conservation Authority liaison.....	18
6.4 Department of Conservation advice.....	19
6.5 Community advocacy and involvement.....	19
6.6 Community visibility.....	19
6.7 District and Regional Councils advocacy and advice.....	19
6.8 Iwi liaison and advocacy.....	19
7. Conclusion	20

1. Chairperson's report

The Southland Conservation Board has had another busy year.

Our main focus for the year was to be the review of the Fiordland National Park Plan. Unfortunately, this review has yet to be initiated by the Department of Conservation. The Board has though, spent time looking at various issues in the Park to be up to speed when the Review starts – hopefully, this coming year.

Milford Sound has been an area of interest for the Board with several concession applications, a trip to the Ngapunatoru Plateau and a presentation from the Milford Opportunities Group on their vision for Milford.

The Board has had dialogue with the Regional and District Councils on consents, the regional Pest Plan and the Regional Coastal Plan.

The Board was delighted to see the work of the Kakapo team bear fruit this year with a record number of chicks born. The Board commends the team for their work.

On the other hand, the Board has concerns over the current 'mega mast' that is occurring in the South and is pleased that DOC has found the funds to do rat and stoat control over a greater part of the conservation estate.

The Board looks forward to continuing working with Predator Free Southland and Predator Free Rakiura to secure a predator-free environment.

On a personal note, I have thoroughly enjoyed my relationships with Aaron Fleming the Southern Director, the three Operation Managers (Nedra, Tony & Ren) and all the DOC staff who have facilitated the Board in its work.

A special relationship has been developed between the Otago and Southland Conservation Board and I wish Pat Garden well in his retirement as Chair of the Otago Board.

The Southland Board has worked well as a team and I thank you all for all the hard work, especially outside of meetings.

Finally, my special thanks to Donna Shepard and Kathryn Roberts for keeping the Board informed, on track, and well fed.



John Whitehead
Chairman

2. Introduction

This is the 28th Southland Conservation Board Annual Report.

The Southland Conservation Board had 11 members for the 2018-2019 year appointed by the Minister of Conservation under the terms of the Conservation Act 1987. The Board farewelled Lloyd Esler, Gail Thompson, and Andrew Bowmar, and welcomed Shona Sangster, Estelle Leask, and Claire Jordan, one reappointment was made of Fiona Black. John Whitehead remained chair, and Alison Broad was nominated as Deputy Chair.

Conservation Boards are independent advisory bodies, established by statute. The Southland Conservation Board represents the community and offers interaction between communities and the Department of Conservation, within the area of jurisdiction of the Board.

The Board has several statutory roles under various Acts including:

- The recommendation of Conservation Management Strategies (CMS) to the New Zealand Conservation Authority (NZCA) for approval
- Reporting on the implementation of the CMS
- The approval of Conservation Management Plans
- The recommendation of National Park Management Plans to the NZCA for approval
- Advising the Department of Conservation and NZCA on conservation matters, and proposed changes to the status of nationally and internationally significant land.
- Liaising with Fish and Game Councils on conservation matters
- Carrying out other powers delegated by the Minister of Conservation, the Conservation Act or any other Act.

Board functions are outlined in section 6(M) of the Conservation Act 1987 and the powers, which enable the Board to carry out those functions, are under 6(N) of the Act. Boards also have a number of functions under section 30 of the National Parks Act 1980.

Section 6(O) of the Conservation Act 1987 requires conservation boards to provide the NZCA with an annual report as soon as practicable after the 30th June each year. In recognition of this requirement, the Southland Conservation Board submits this annual report.

3. Conservation Board Region

The Southland Conservation Board's area of jurisdiction covers the area in the map below. This extends out to the 12-nautical mile limit with respect to coastal and marine issues, and out to the 200-nautical mile limit with respect to protected species.

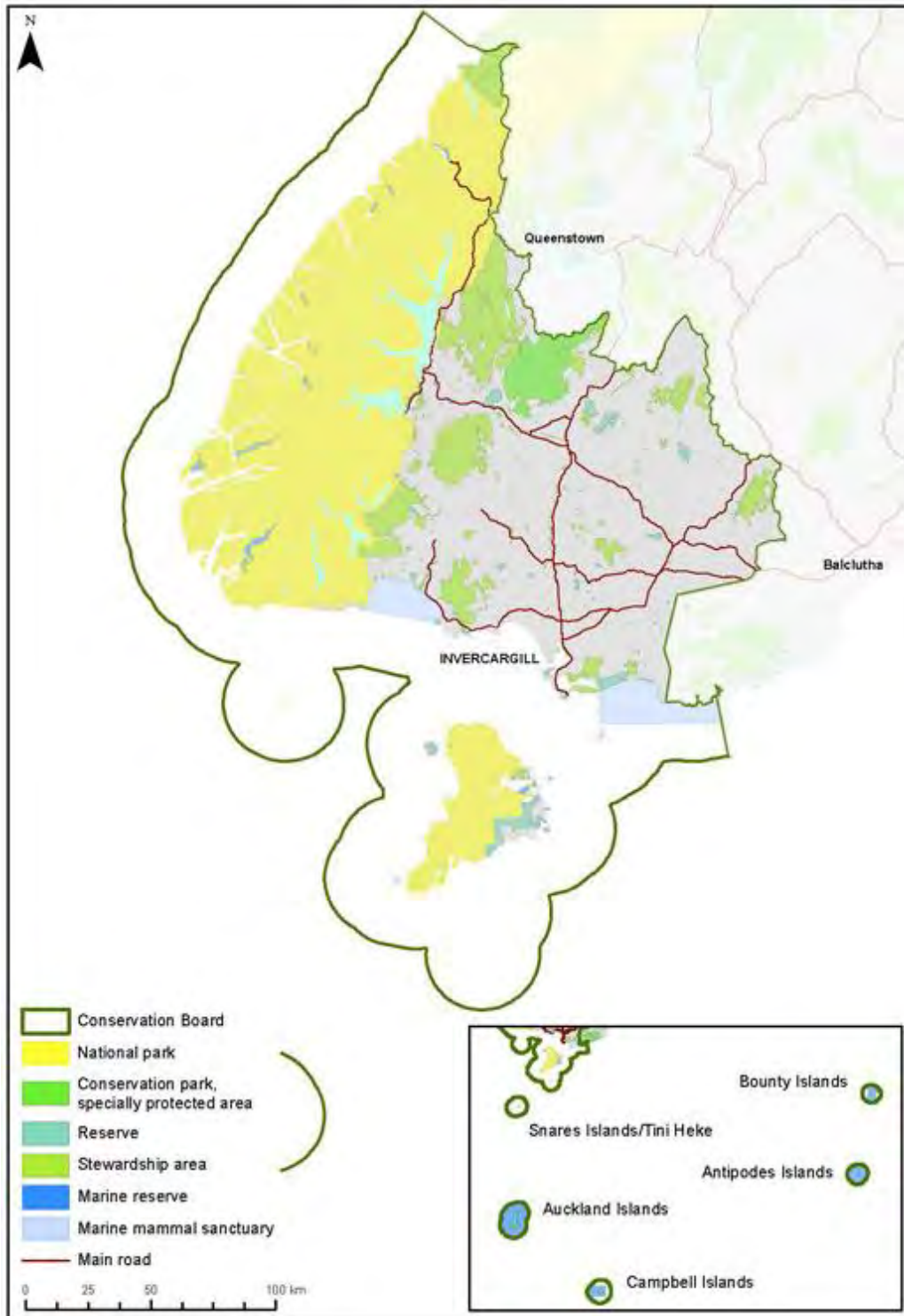


Figure 1. Southland Conservation Board Jurisdiction

There is a large number of issues which are of interest to the Board these include;

- Ecosystem management and the management and enhancement of our many threatened species e.g. kākāpō, takahē, kiwi, rock wren, snipe, and mistletoe, etc.
- Management of recreational and tourist facilities
- Management of historic sites
- Concession activities, including those relating to recreation and tourism activities, grazing, industrial use, beaches, filming, and gravel extraction
- Marine protection

Approximately 21.3% of all public conservation land in New Zealand lies within the Region. The total area of the Southland Region comprises of 5,523,807 ha. Of this total, approximately 96.8% (5,347,631 ha) is contained within the boundary of the Southland Conservation Board's area of jurisdiction.

3.1 Conservation features of the Area

- Fiordland National Park - 1,278,578 ha
- Rakiura National Park - 140,359 ha
- Eyre Mountains/Taka Ra Haka Conservation Park - 65,610 ha
- 69 Scenic Reserves - 26,306 ha
- 15 Recreation Reserves - 317 ha
- 3 Historic Reserves
- 12 Marine Reserves
- 3 Marine Mammal Sanctuaries
- 5 National Nature Reserves
- 1 Ecological Area - Lindsay Ecological Area - 127 ha
- 345 Stewardship Areas - 235,449 ha
- 2 Wilderness areas - Pembroke and Glaisnock Wilderness Area - 141,712 ha
- 2 World Heritage Areas - Subantarctic Islands and Fiordland part of Te Wāhipounamu
- 1 Ramsar site - Awarua Wetland
- 1 Dark Sky Sanctuary
- 700 Archaeological Historic Sites
- 120 Huts
- 1,200 Km of Track
- 3,600 Structures

4. Board Functioning

4.1. Board Functions Under Section 6m of the Conservation Act 1987

The functions of the Board are:

- 1) To recommend the approval by the Conservation Authority of conservation management strategies, and the review and amendment of such strategies, under the relevant enactments
- 2) To approve conservation management plans, and the review of amendments of such plans, under the relevant enactments
- 3) To advise the Conservation Authority and the Director-General on the implementation of conservation management strategies and conservation management plans for the area within the jurisdiction of the Board
- 4) To advise the Conservation Authority or the Director-General
 - a. On any proposed change of status or classification of any area of national or international importance; and
 - b. On any other conservation matter relating to any area with the jurisdiction of the Board
- 5) To liaise with any Fish and Game Council on matters within the jurisdiction of the Board
- 6) To exercise such powers and functions as may be delegated to it by the Minister under this Act or any other Act

4.2. Powers of the Board under Section 6n of the Conservation Act 1987

- 1) Every Board shall have all such powers as are reasonably necessary or expedient to enable it to carry out its functions.
- 2) Without limiting the generality of subsection (1), each Board may –
 - a) Advocate its interests at any public forum or in any statutory planning process; and
 - b) Appoint committees of members and other suitable persons, and delegate to them functions and powers.
- 3) The power conferred by subsection (2)(a) shall include the right to appear before courts and tribunals in New Zealand and be heard on matters affecting or relating to the Board's functions.

4.3 Board Functions under the National Parks Act 1980

There are two national parks within the Board's region: Fiordland National Park and Rakiura National Park. The Board also advocates on cross-boundary issues with Mount Aspiring National Park (which is the responsibility of the Otago Conservation Board).

4.4 Board Membership

There were 11 Board members for the reporting year appointed by the Minister of Conservation; one whose term expired on 30 June 2018 and was reappointed for a further 3-year term and three who were new appointments.

The following table lists the membership of the Southland Conservation Board between 1 July 2018 and 30 June 2019 and their term of office.

Table 1: Board Membership

Board member	Area	Term start	Term end	Term served
Alison Broad	Invercargill	01/07/14	30/06/20	5 Years
Claire Jordan	Tuatapere	01/07/18	30/06/21	1 Year
Estelle Leask	Bluff	01/07/18	30/06/21	1 Year
Fiona Black	Te Anau	01/01/11	30/06/21	8.5 Years
John Whitehead	Te Anau	01/01/11	30/06/19	8.5 Years
Maurice Rodway	Invercargill	01/07/16	30/06/19	3 Years
Peter McDonald	Dipton	01/07/17	30/06/20	2 Year
Shona Sangster	Rakiura	01/07/18	30/06/21	1 Year
Stewart Bull	Invercargill	01/05/09	30/06/19	9 Years
Vaughn Filmer	Te Anau	01/07/17	30/06/20	2 Year
William Watt	Rakiura	01/07/16	30/06/19	3 Years

4.5 Members Profiles

John Whitehead of Te Anau (Chairperson)

Appointment term: 1 January 2011 to 30 June 2019

Mr. Whitehead is a retired farmer. He is experienced in negotiating environmental outcomes and consensus building. He has a sound understanding of governance issues and conservation laws and policies. His lifelong interest is in natural history and conservation, in particular, high-country issues, rivers, and indigenous fisheries management and Predator Free 2050. He is chairman of the Pomona Island Charitable Trust (an Island restoration project) and a trustee on the Waiiau Fisheries & Wildlife Habitat Enhancement Trust. His outdoor recreation interests are tramping and predator control.

Fiona Black of Te Anau

Appointment term: 1 January 2011 to 30 June 2021

Ms. Black is the Manager of Concessions and Consents for Real Journeys. She has a sound knowledge of legislation and good working relationships with Environment Southland and the Department. Ms. Black is well connected to the Te Anau community and knows the challenges with living and working in Milford Sound. She has a strong interest in marine wildlife conservation. Her outdoor recreation interests are tramping, photography, ornithology, natural heritage, conservation, and boating.

Alison Broad of Invercargill

Appointment term: 1 July 2014 to 30 June 2020

Ms. Broad is a consultant in community projects and processes, and a Trustee and National Board Member of Inspiring Communities. She has expertise in strategic thinking, policy development, advocacy, and development and governance for community benefit. Ms. Broad has completed consultancy work for the Department. Her outdoor recreation interests are tramping, walking, kayaking, and biking.

Maurice Rodway of Invercargill

Appointment term: 1 July 2016 – 30 June 2019

Maurice has recently retired as the Southland manager of Fish and Game New Zealand, a position he held for 31 years. He has extensive knowledge of Southland's rivers and natural places. He has a Master of Science degree in zoology and an Advanced Certificate in Sustainable Nutrient Management from Massey University. Maurice is a councillor for Environment Southland and is a certified commissioner with chair endorsement for the Resource Management Act. With his wife Alison, he owns property in Otatara and at Manapouri and has interests in biodiversity and outdoor recreation, in particular, trout fishing and white-water and surf kayaking.

William J (Bill) Watt of Invercargill

Appointment term: 1 July 2016 to 30 June 2019

Mr. Watt is a planning and resource management consultant, now based on Rakiura, where he has enjoyed holidays since the early 1950s. He also has a long association with Murihiku (Southland), where he worked as a planner and senior executive in regional and local government from 1979 to 2010 and since then as a consultant. As a trained geographer and planner, Mr. Watt has a keen interest in the conservation values of southern New Zealand, and also an appreciation of the values and needs of people and communities. Mr. Watt's outdoor interests include yachting, bushwalking, and mountain biking

Stewart Bull of Riverton

Appointment term: 1 May 2009 to 30 June 2019

Stewart is the chair of Ōraka-Aparima Rūnanga, a member of the Whenua Hou committee, Fiordland Marine Guardians, Chair of the Rakiura tītī committee, and a member of the Rakiura tītī administering body. Stewart has always had an interest and participated in environment and resource management throughout his adult life and has always felt the concept of Kaitiakitanga is a responsibility he feels he has an absolute obligation to. Stewart believes many hands make light work and if we all participate then he is sure the world will be a comfortable living space for us and the future generations to come.

Peter McDonald of Dipton

1 July 2017 - 30 June 2020

Peter together with his wife Kim Spencer-McDonald, daughter Laura and son William farm a 669-ha sheep farm in Dipton in the Caroline Valley. The McDonalds settled in Dipton in 1897 and have been sustainably farming the land ever since. Peter is active in community roles including as a volunteer fireman for just over twenty years. Peter has been involved in conservation at a local level for many years and is excited about continuing contribution at a provincial level.

Vaughn Filmer of Te Anau

Appointment term: 1 July 2017 - 30 June 2020

Vaughn Filmer is a teacher of senior geography, outdoor environmental education, junior physical education and social studies at Fiordland College, a Gold Enviroschool in Te Anau. He is also a founding member of 'Kids Restore the Kepler', a conservation and education project in Fiordland National Park. Mr. Filmer regularly carries out pest control, biodiversity monitoring, and education fieldwork as a part of this project and others. He was the Sir Peter Blake Trust Environmental Educator for 2017. His outdoor interests include trail running, mountain biking, snowboarding, kayaking, pack-rafting, mountaineering, tramping and camping - and he is a rock climbing/abseiling instructor.

Claire Jordan of Tuatapere

Appointment term: 1 July 2018 - 30 June 2021

Claire is an environmental planner and scientist who has worked in policy and science roles in central and local government and as a consultant. Claire is the third generation of her family to live on their dairy farm, 30 km north-west of Tuatapere on the western bank of the Waiiau River. Claire is an active member of the Waiiau Rivercare Group, which advocates on behalf of the Waiiau River and the surrounding community. Claire holds a First-Class Honours Degree from the University of Canterbury in Chemistry and Environmental Science. Claire currently divides her time between her young family and studying towards a Master of Resource and Environmental Planning Degree through Massey University. Claire loves tramping, particularly with the lure of a view, and spends as much time as she can in Te Anau with her family, enjoying time on the lake and in the national park. The experience of seeing the world through the eyes of her young children motivated Claire to become a member of the Southland Conservation Board so that they might have the same opportunities she has had to wonder at our precious, unique and spectacular country and its taonga as they grow.

Estelle Pera-Leask of Bluff

Appointment term: 1 July 2018 - 30 June 2021

Estelle (Ngāi Tahu, Whakatōhea, Ngāti Ruanui) is a member of the Bluff Hill Motupōhue Environment Trust (BHMET) and the current chair. She is a graduate of the SIT Bachelor of Environmental Management degree programme, and a member of the Whenua Hou Komiti. She works as a Senior Environmental Advisor at Te Rūnanga o Ngāi Tahu and has volunteered for the Department of Conservation and the Kakapo Recovery Programme and chick rearing facility for many years. Together with her husband Peter, they help coordinate the BHMET volunteers undertaking predator control and habitat restoration. Born and raised in Bluff, she believes kaitiakitanga (guardianship) of the natural environment is a privilege and a responsibility. Her interests include growing native plants, gardening, mahingakai, cooking, hiking and boating and much more.

Shona Sangster of Stewart Island

Appointment term: 1 July 2018 - 30 June 2021

Shona is a Stewart Island/Rakiura resident who is passionate about conservation. She is a trustee of the Stewart Island/Rakiura Community and Environment Trust. She edits the monthly Stewart Island News and works part-time for Glowing Sky Merino and the Southland District Council. She is a member of the Rakiura Marine Guardians and a volunteer librarian. She has also volunteered for the Kakapo Recovery programme. She holds a Master of Arts in Philosophy from The University of Auckland. Her interests include tramping, fishing, and botany.

4.6 Board Meetings

The Southland Conservation Board held six meetings during the reporting period. Venues for the Board meetings are varied each meeting to ensure wide coverage and enable members of the public in the district to attend meetings and access the Board.

Table 2: Board meeting dates and location

Board meeting date	Meeting location and venue
23 August 2018	Department of Conservation, Invercargill
18 October 2018	Department of Conservation, Invercargill
13 December 2018	Distinction Hotel, Te Anau
21 February 2019	Department of Conservation, Invercargill
11 April 2019	Department of Conservation, Invercargill
6 June 2019	Department of Conservation, Invercargill

4.7 Attendance

The table below summarises the number of Board meetings attended by members out of the total number of meetings held during the year.

Members attended other meetings and events in their role as Board members, including subcommittee meetings and representative roles.

Table 3: Member Attendance

Board Member	Board meetings	Field Trips
Alison Broad	5/6	2/2
Claire Jordan	5/6	2/2
Estelle Leask	5/6	1/2
Fiona Black	6/6	2/2
John Whitehead	6/6	2/2
Maurice Rodway	5/6	2/2
Peter McDonald	5/6	2/2
Shona Sangster	5/6	1/2
Stewart Bull	6/6	1/2
Vaughn Filmer	5/6	2/2
William Watt	5/6	1/2

4.8 Board Committees and Representation

In July 2017 it was moved at a Board meeting that all sub-committees be closed, except the Whenua Hou committee, as it is a requirement of the Ngāi Tahu Claims Settlement Act 1998.

4.8.1 Whenua Hou Committee

This subcommittee was established under section 331 of the Ngāi Tahu Claims Settlement Act 1998, as a part of a joint approach to the management of Whenua Hou. The Committee consists of one representative from each of the four Murihiku papatipu rūnanga and four from the Southland Conservation Board.

Table 4: Whenua Hou Committee

Board representatives	Runanga Representatives
Fiona Black	Cyril Gilroy (Waihopai)
Stewart Bull	Estelle Leask (Awarua)
John Whitehead	Tane Davis (Ōraka-Aparima)
Alison Broad	Rodney (Hom) Ryan (Hokonui)

4.9 Representation

Members of the Board have strong links with many community groups in Southland and are active participants in a range of Conservation activities.

Table 5: Summary of the representation

Organisation/Activity	Board Member
Whenua Hou Committee	Alison Broad
Southland aquaculture Reference Group	Bill Watt
Deep Cove Outdoor Education Trust	Bill Watt
Bluff Hill Motupōhue Environment Trust	Estelle Leask
Predator Free Bluff	Estelle Leask
Les Hutchins Conservation Foundation	Fiona Black
Manapouri Doubtful Sound Commercial User Group	Fiona Black
Whenua Hou Committee	Fiona Black
Community Conservation Partnership Fund	John Whitehead
Pomona Island Charitable Trust	John Whitehead
Waiau Wildlife and Fisheries habitat enhancement trust	John Whitehead
Waiau Working Party	John Whitehead
Fiordland Marine Guardians	John Whitehead
Whenua Hou Committee	John Whitehead
Environment Southland	Maurice Rodway
Fish & Game New Zealand	Maurice Rodway
Otago Conservation Board	Maurice Rodway
Te Rōpū Taiao	Maurice Rodway
Predator Free Southland	Peter McDonald
Stewart Island Rakiura Environmental Trust	Shona Sangster
Rakiura Marine Guardians	Shona Sangster
Predator Free Rakiura	Shona Sangster
Fiordland Marine Guardians	Stewart Bull
Rakiura Tītī Committee	Stewart Bull
Rakiura Tītī Islands Administering Body	Stewart Bull
South West Endangered Species Charitable Trust	Stewart Bull
Whenua Hou Committee	Stewart Bull
Kids Restore the Kepler	Vaughn Filmer

4.10 Training for members

The Board also receives regular updates on the Department's activities provided in the status report which is considered at each meeting. Topics covered this year were:

- The Save our iconic kiwi programme
- Predator Free 2050
- Whio recovery programme
- Fiordland National Park current state
- Fiordland National Park Management Plan Review
- New Zealand Biodiversity Strategy Review
- Predator Free Southland
- Permissions and statutory land management processes
- Tiakina ngā manu – Battle for our Birds
- Kākāpō

4.11 Community and DOC Involvement in Board Meetings

Public forums are offered at most Board meetings for members of the community to raise conservation issues with the Board.

The Board welcomed presentations from members of the public and Department staff at the meetings during 2018/19 presentations were received from:

- Em Oyston, Department of Conservation – Save our Iconic Kiwi
- Brent Bevan, Department of Conservation – Predator Free 2050
- Andrew Smart, Department of Conservation – Whio
- Paul and Lynley King, Members of the public – Helicopters
- Bridget Carter, Southland District Council – Predator Free Rakiura
- Chris Hankin, Department of Conservation – Predator Free Southland
- Kerry Charles, Department of Conservation – New Zealand Biodiversity Strategy
- Rachael Egerton, Department of Conservation – Subantarctic Heritage Strategy
- Colin Bishop, Department of Conservation - Tiakina ngā manu – Battle for our Birds
- Tim Allen, OMV – Great South Basin Exploration
- Marcus Roy, Southland District Council – Engagement with the Board

4.12 Annual Work Plan

Please refer to Appendix 1 for the full Board Annual Work Programme.

4.13 Field Trips and site inspections

The Board had two field trips in the past year.

Table 6: Subcommittees

Field Trip date	Field Trip destination and purpose
22 August 2018	<p>Curio Bay</p> <p>The Board travelled to Curio Bay by bus, stopping at the Nohoanga site at Waikawa where Stephanie Blair, the Pou Tairangahau, talked about the Nohoanga site there and the kanakana.</p> <p>Once at Curio Bay the Board was greeted by Paul Duffy, Chair of the South Catlins Charitable Trust and Bobbi Brown from Venture Southland.</p> <p>The Board was informed of the project the two organisations, along with the Department, undertook to develop the new heritage centre at Curio Bay. Following this, the Board had a chance to experience the audiovisual show at the new heritage centre, which told the story of the area, from the formation of the petrified forest in Jurassic times to the modern day, where visitors can see Hector's dolphins, sea lions and yellow-eyed penguins in a wild and scenic setting.</p> <p>After a short lunch break the Board went for a walk to look over the petrified forest and some key spots for penguins, and then through the Smith's Bush walk.</p> <p>The Board then travelled to Waipapa Point, a popular spot not only for tourists but also for sea lions. After receiving a briefing of what to do if you encounter a sea lion Board members and DOC staff ventured out to the beach and were offered a rare opportunity to go up in the Waipapa Lighthouse.</p>
14 December 2018	<p>Milford Sound</p> <p>The Board travelled up the Milford Road to Milford Sound, looking at various sites along the way.</p> <p>At Monkey Creek the Board meet Max (Andrew) Smart and Falco the Conservation Dog as they went to look for whio. Unfortunately, the Board was not lucky enough to spot any whio but did get to see a nest from several seasons ago.</p> <p>Once in Milford Sound Board members went to the Aerodrome before travelling via helicopter to Ngapunatoru plateau. Most members were able to land and take in the amazing scenery. This helped the Board get a better understanding of the Ombudsman's report on helicopter landings.</p> <p>Once back on land the Board helped release a kea that had been rehabilitated at the Dunedin Wildlife Hospital. John Twidle described the concepts behind the Milford Opportunities Project to the Board.</p>



Photos on the previous page:

Top left: The Southland Conservation Board standing on the viewing platform at Curio Bay, 22/08/18 – Photographer: Alison Broad

Top right: The View from the Waipapa point lighthouse, 22/08/18 – Photographer: Bill Watt

Top middle: The Southland Conservation Board and DOC staff standing on top of Ngapunatoru Glacier 14/12/19 – Photographer: Donna Shepard

Bottom middle left: A Kea released by the Southland Conservation Board at Milford Sound after a stay and the Dunedin Wildlife hospital 14/12/18 – Photographer: Vaughn Filmer

Bottom middle right: Falco the Conservation Dog waiting to go find whio, 14/12/18– Photographer: Shona Sangster

Bottom left: Southland Conservation Board Chair, John Whitehead, and Board member Stewart Bull discussing the cultural significance of Ngapunatoru Glacier 14/12/19 – Photographer: Shona Sangster

Bottom right: A helicopter on top of Ngapunatoru Glacier 14/12/19 – Photographer: Vaughn Filmer

5. Statutory activity

The Southland Conservation Board is very passionate about advocacy.

In the past year, the Board made six submissions on various plans in the Southland region. The Board also featured in seven articles in the local paper as a result of the content discussed at Board meetings.

5.1 Conservation Management Strategy (CMS)

There are two CMSs in the Southland Conservation Board's area: The Southland / Murihiku CMS and the Rakiura CMS.

The Southland / Murihiku CMS was approved and published in 2016, the Rakiura CMS was approved and published in 2011.

The Board receives implementation and monitoring reports on both of these strategies and commented on them then passed these reports on to the New Zealand Conservation Authority.

5.2 Management plans

There are two National Park Management Plans in the Southland Conservation Board Area, the Rakiura National Park Management Plan and the Fiordland National Park Management Plan.

The Fiordland National Park Management Plan review is due to start soon, the Board has put a lot of effort in preparing for the review over the past year.

There were previously Conservation Management Plans for the South East Otago region, the Catlins State Forest Park and the Mavora Lakes Park, these were revoked at the Boards June 2018 as these plans became obsolete under the Southland / Murihiku Conservation Management Strategy.

5.3 Implementation monitoring

The Board considered implementation reports on the management plans and strategies for the Rakiura National Park, Fiordland National Park, and the Southland / Murihiku region. Members were impressed overall with the progress made and the range and amount of work completed. Once the Board read and approved the reports they were passed on to the New Zealand Conservation Authority.

6. Advice and Advocacy

All Board members have responsibility for liaising with other groups when opportunities arise, and some members have specific roles in liaison.

The Board appointed various members to liaise with groups and agencies.

6.1 Liaison

Table 7: Liaison persons

Liaison Person	Group, agency or organisation
John Whitehead	DOC Community Conversation Fund
Stewart Bull	Fiordland Marine Guardians
Shona Sangster	Predator Free Rakiura Governance Group
Maurice Rodway	Fish and Game Southland
Maurice Rodway	Environment Southland
Maurice Rodway	Otago Conservation Board
Peter McDonald	Gore District Council;
Peter McDonald	Predator Free Southland

6.2 Other Conservation Boards liaison

The Southland and the Otago Conservation Boards hold a close relationship. There are two liaison members, Maurice Rodway of the Southland Conservation Board and Robyn Shanks of the Otago Conservation Board. The Chairs; John Whitehead of the Southland Conservation Board and Pat Garden of the Otago Conservation Board and the two Board Support Officers Kathryn Roberts for the Southland Conservation Board and Teresa Murphy for the Otago Conservation Boards keep in close contact with the Chairs often attending each other's meetings.

6.3 New Zealand Conservation Authority liaison

The Southland Conservation Boards NZCA liaison is Jan Riddell who attends most Southland Conservation Board Meetings. The Chair also receives regular letters from the Chair of the NZCA as well as their agendas and minutes which are passed onto the Board.

6.4 Department of Conservation advice

The Board provided both formal and informal advice to the Department on the following issues:

- Rakiura National Park
- Fiordland National Park
- Milford Sound
- Zero Invasive Pests proposal
- Gravel extraction
- Cycleway proposals
- Beekeeping on DOC land

6.5 Community advocacy and involvement

The Board believes that working with conservation organisations and members of the public is very important. Meetings were held in different parts of the region and opportunities for the public to attend Board meetings were advertised.

Members of the public attended the Public Forums at several of the year's meetings and a range of issues were raised. The Board appreciated their input and efforts made to attend the meetings and responded to questions asked or concerns raised.

Public forum issues raised were:

- Helicopters in Gertrude Valley

6.6 Community visibility

The Board maintains a presence on the Department's website. Information on being on a Conservation Board was also developed and advertised/displayed at <https://www.doc.govt.nz/about-us/statutory-and-advisory-bodies/conservation-boards/>.

6.7 District and Regional Councils advocacy and advice

The Board appreciates the opportunities to meet with representatives of the four local Councils as there are several regional issues in which it is interested.

Over the past year the Board has communication with the local councils via email, the Board also has Maurice Rodway an Environment Southland Councillor. Both the Regional Council and Southland District Council have presented at Board Meetings.

6.8 Iwi liaison and advocacy

Two members of the Board are nominated by Ngāi Tahu as required under the Ngāi Tahu Settlement Act 1998. The Board had planned to hold a meeting at a local marae in February however this meeting had to be postponed. The Board now has intentions of holding a meeting with local rūnanga at a local marae before the start of the Fiordland National Park Management Plan review.

7. Conclusion

In the past 12 months, the Board has achieved a lot, they have become well prepared for the upcoming Fiordland National Park Management Plan review. The Board has also put a lot of effort into formalising the internal process and upskilling. The Board has learned a lot in the last year and look forward to another year where they can achieve more. Attached is the Board's work plan for the year ending 30 June 2019 with a full record of what was set out to be achieved and what was achieved.

Appendix 1 – Annual Work Plan

Southland Conservation Board Workplan

1 July 2018 – 30 June 2019

Status indicator

Colour	Indicates
	Completed
	Started and is ongoing
	Not started yet

PART A: REGIONAL WORK PROGRAMME

1 Review/development of statutory management plans including Conservation Management Strategies

1.1 Board Objective:

The Board will be involved with the review of the Fiordland National Park Management Plan

Planned Board Activities, Success Measures and Key Milestones

	Action	Status	Progress Commentary
A	The Board will work with the Departments Planners and Ngai Tahu to initiate a review of the Fiordland National Park Management Plan.		The Board is waiting for the Department to formally start the review process. The Board understands that the Department wishes to see the completion of the Westland and Aoraki Mt Cook National Park Management Plans before beginning the Fiordland and Mt Aspiring Park National Park Management Plan Reviews.

1.2 Board Objective:

In conjunction with the Department, the Board will determine priorities for implementation of the Murihiku/Southland Conservation Management Strategy and the Rakiura Conservation Management Strategy and National Park Management Plan

Planned Board Activities, Success Measures and Key Milestones

	Action	Status	Progress Commentary
A	The Board will work with the Department on the Milestone in the Rakiura CMS on the gazettal of the southern part of Rakiura.		The Board has identified their wish to see this milestone complete. The Board has asked the Department to initiate this process, so far progress has been slow.
B	The Board will carry out its statutory role monitoring and reporting on the Southland /Murihiku Conservation Management Strategy to make sure the Department is achieving its goals towards the five-year milestone		The five-year milestones are due this calendar year. The Board takes this role seriously and is looking forward to seeing if the implementation has occurred.

2 Other statutory functions

2.1 Board Objective:

The Board will nurture ongoing working relationships with Fish and Game Councils regarding issues of mutual interest within the region.

Planned Board Activities, Success Measures and Key Milestones

	Action	Status	Progress Commentary
A	The Board will continue to develop a relationship with southland Fish and Game.		The Board Chair and the Chair of Southland Fish and Game meet regularly and Southland Fish and Game have been invited to Board meetings.

3 Advocacy

3.1 Board Objective

The Board will pursue all reasonable opportunities to advocate at public forums and in any statutory planning processes

Planned Board Activities, Success Measures and Key Milestones

	Action	Status	Progress Commentary
A	The Board will continue to advocate strongly on Regional Resource Management Act 1991 policy documents including the Regional Pest Management Plan, and the Regional Coastal Plan Review.		The Board this year has submitted on the Coastal Plan Review, the Regional Pest Plan and the Invercargill Long Term plan. The Board has also met with the Southland District Council to discuss relationship building.
B	The Board will submit on relevant Resource Management Act 1991 consent applications where we have been deemed to be an interested party.		On-going
C	The Board will continue to advocate for the integrity of the conservation estate in any instances where it may be impacted negatively, subject to resources available.		The Board regularly advises the Department on concession applications where they meet the Board triggers.

PART B: GENERAL EXPECTATIONS

4 Working with the Department

4.1 Board Objective:

Board members will maintain good working relationships and open dialogue with Directors, Managers, and Board Support Officers to engage strategically in conservation for the region.

Planned Board Activities, Success Measures and Key Milestones

	Action	Status	Progress Commentary
A	The Board wants to develop a good working relationship with the Operations and Partnership Director for their region.		This relationship has been made more difficult with both the Operations and Partnership Directors based outside of the Boards area. This action still needs work.

5 Taking account of Ministerial priorities for the Department

5.1 Board Objective:

The Board will support Ministerial and local priorities.

Planned Board Activities, Success Measures and Key Milestones

	Action	Status	Progress Commentary
A	The Board will advise the Department and will advocate where possible, on the threat of wilding conifers and other invasive weeds in Southland.		On-going through the Regional Pest Plan and the Chair being on the Mid Dome wilding trees Trust.
B	The Board will publicly support 'The Battle for our Birds' programme in the Southern South Island Region.		The Board has actively offered support to the Department but has not made any public statements.
C	The Board will advise the Department on the eradication of pigs, cats, and mice from the Auckland Islands.		The Board has not given technical advice but are very supportive and are kept up to date by the Auckland Islands team.
D	The Board will advise the Department and work with the Stewart Island Community to make Stewart Island / Rakiura predator-free.		The Board has one Member on the Rakiura Predator Free Trust.
E	The Board will continue to support the proposals to find		The Board continues to advocate for Predator free

	new protected habitat for Kākāpō and Takahē.		Rakiura and the large Fiordland Islands.
F	The Board will advise and work with the Department, Regional Authorities, Iwi and the local community to support the 'Living Waters' Programme.		The Board has not been involved to date.
G	The Board will work with and advise the Department on how to engage the community to recreate over a full range of the Conservation Estate whilst minimising the impact on biodiversity, landscape, and social values.		Concessions advice given and communications with FMC, Deerstalkers Association, Wapiti Foundation, and the Animal Game Council.
H	The Board will support local initiatives for Predator-Free 2050.		The Board has several members on the interim Southland Predator Free initiative and has actively supported its formation.

6 Working with adjoining Boards and the NZCA

6.1 Board Objective:

Board members will liaise with neighboring conservation Boards to progress cross-boundary Conservation Management Strategy and National Park issues and other matters of mutual interest

Planned Board Activities, Success Measures and Key Milestones

	Action	Status	Progress Commentary
A	To have at least one joint meeting with the Otago Board to discuss cross-boundary issues, especially the Park Plans.		The Board aims to have a meeting every year, unfortunately, this year it has not happened. The Board chairs from each Board have attended cross-boundary meetings regularly and keep in close contact. Both Boards have liaison members who also attend both the Otago and Southland Board meetings sporadically throughout the year.

7 Understanding the Board’s contribution to giving effect to the principles of the Treaty of Waitangi

7.1 Board Objective:

The Board will understand and support the Board’s obligations under Treaty settlements as well as principles under section 4 of the Conservation Act 1987.

Planned Board Activities, Success Measures and Key Milestones

	Action	Status	Progress Commentary
A	To have at least one meeting on a marae and be in active discussion with Ngā Runanga ki Murihiku over the Fiordland National Park Management Plan review.		The Board has planned a noho for August at Te Rau Aroha Marae where the Board will build a relationship with the local Rūnanga.
B	Strengthen the Board’s relationship with Makaawhio Rūnaka on the West Coast.		A joint meeting with the Board Chairs for Otago, Southland and Westland and the Directors for those regions has been planned but has yet to happen. Makaawhio has been invited to the noho in August.
C	To send at least one member to Te Pukenga Atawhai.		No Board members were available to attend the last Te Pukenga Atawhai in their area, and future dates are yet to be set.

8 Engaging with the community, including raising the profile of the Board

8.1 Board Objective

Board members will liaise regularly with other conservation entities, such as district and regional councils, non-government organisations and community groups, to enhance the profile of the Board and pursue good working relationships on issues of mutual interest and concern

Planned Board Activities, Success Measures and Key Milestones

	Action	Status	Progress Commentary
A	Board members will take the initiative to meet with community groups and the public to gauge community reaction to conservation initiatives planned or implemented by the Department.		Board members try to attend any community meetings held by the Department about which they have been informed. There is still room to improve the communication between the Department and the Board on DOC's public engagement.
B	The Board will hold a public forum at most of its meetings.		The Board continues to hold public forums at most meetings and has had several members of the public bring issues to the Board in the past year.
C	The Board to attend/promote activities to raise the profile of conservation in Southland as well as raising the profile of the Board.		The Board will continue to work with the Department to do so. The Board does need to be kept informed of activities that are happening.

PART C: RISKS AND OPPORTUNITIES

9 Risks from the Board's perspective

A This year is going to be very busy for the Board with both the Fiordland National Park Management Plan Review and the review of the Regional Coastal Plan.

B The rapidly increasing tourist numbers in our region are increasing Board work, this is expected to increase over increase more over the next 12 months.

C Increasing Resource Management Act 1991 consent applications where the Board is deemed an interested party lead to a lot of work for Board members outside of our bi-monthly meetings.

- A) The Fiordland National Park Plan Review was not initiated this year, but the Board has kept busy looking at the underlying issues with the current park plan.
- B) The number of concession applications that meet the Board triggers has not increased markedly this year though there are several large applications pending.
- C) The Board has sought to increase this work by seeking to be an affected party to consents affecting biodiversity issued by the Southland District Council.

10 Opportunities for conservation growth

A The Board sees an opportunity to be involved in conservation week to raise awareness around conservation in the Boards region as well as the Boards profile.

- A) The Board has been talking to the Department about being involved in Conservation Week in this coming year.

This report is presented to the New Zealand Conservation Authority as required by the Conservation Act and distributed to interested parties. Members of the public are welcome to attend Conservation Board meetings. If you would like more information on the Southland Conservation Board please see the website www.conservationboards.org.nz or contact the Board Support Officer, at the Department of Conservation in Invercargill phone (03) 211 2400 or e-mail southlandconservatioboard@doc.govt.nz