

# Southland Conservation Board Te roopū atawhai o Murihiku

## Annual Report

1 July 2016 - 30 June 2017



Presented to the New Zealand Conservation Authority Pursuant to Section 6(O) of the Conservation Act 1987

Serviced by the Department of Conservation  
Murihiku Office  
PO Box 743  
33 Don Street  
Invercargill 9840

ISBN 1172-9198 (hard copy)  
ISBN 1179-4224 (on line)



# **Southland Conservation Board**

## **Te roopū atawhai o Murihiku**

### **Annual Report**

1 July 2016 - 30 June 2017

Presented to the New Zealand Conservation Authority Pursuant to Section 6(O) of the Conservation Act 1987

Front Cover: William Watt (SCB), Grant Tremain (DOC), Donna Shepard (DOC), Fiona Black (SCB), Lloyd Esler (SCB), Alison Broad (SCB), Robyn Roberts (DOC), Kathryn Roberts (DOC), Nick Humphries (SCB), Greg Lind (DOC), John Whitehead (SCB), Wendy Newton (DOC)

ISBN 1172-9198 (hard copy)

ISBN 1179-4224 (on line)

Serviced by the Department of Conservation  
Murihiku Office  
PO Box 743  
33 Don Street  
Invercargill 9840

## Contents

Section		Page
1.	<b>Introduction</b>	6
2.	<b>Chairman's Report</b>	7
3.	<b>Southland Conservation Board Jurisdiction</b>	8
3.1.	World Heritage Area the Sub Antarctic Islands	9
3.2.	National Park and World Heritage Area Fiordland National park	9
3.3.	Rakiura National Park	9
3.4.	Awarua-Waituna Wetland Ramsar Sites	9
3.5.	Marine Reserves and Marine Mammal Sanctuaries	9
3.6.	Other Conservation land in Southland	10
4.	<b>Board Membership</b>	10
4.1.	Attendance	11
4.2.	Board Meeting Dates and Locations	11
4.3.	Field Trips	11
4.4.	Special Events	13
4.5.	Community Involvement in Board Meetings	14
5.	<b>Southland Murihiku Conservation Management Strategy (CMS)</b>	14
6.	<b>Implementation Issues</b>	14
7.	<b>Conservation Advocacy</b>	14
8.	<b>Sub-Committees</b>	15
8.1.	Whenua Hou Committee	15
9.	<b>Liaison</b>	15
9.1.	New Zealand Conservation Authority (NZCA)	15
9.2.	Other Conservation Board	15
9.3.	Iwi Liaison	15
9.4.	Fish and Game Council	15
9.5.	Liaison with Other Organisations	16
9.6.	Media	16
10.	<b>Training</b>	17

## Appendices Contents

Section		Page
11.	<b>Appendices</b>	<b>18</b>
11.1	Appendix 1 2016 – 2017 Work Programme Implementation Report	18
11.2	Appendix 2 Southland Murihiku Conservation Management Strategy implementation monitoring report	24

## **1 Introduction**

Conservation Boards are independent bodies established by section 6 (L) of the Conservation Act 1987. Board members are appointed by the Minister of Conservation under section 6(P) of the Conservation Act 1987.

The primary role of the Southland Conservation Board is to advise the Department of Conservation and the New Zealand Conservation Authority. Conservation Boards provide interaction between their local communities and the Department of Conservation.

Conservation Boards focus on planning and strategic direction. A major responsibility for each Board is overseeing the conservation management strategies in their region. Other work of Conservation Boards includes; developing and reviewing national parks and other management plans, advising on proposals for marine reserves, considering the impact of concessions for tourism activities and other activities on conservation land, looking at the range of recreation opportunities in the region, advising on the proposals to change the protective status and classification of areas of national or international importance.

The functions of the Conservation Board are outlined in section 6(M) of the Conservation Act 1987 and the powers of the Board as outlined in section 6(N). Conservation Board also have a number of functions outlined in Section 30 of the National Parks Act 1996.

Section 6(o) of the Conservation Act 1987 requires that every Conservation Board provides the New Zealand Conservation Authority with an annual report as soon as practicable after 30 June each year.

In recognition of this requirement the Southland Conservation Board submits this annual report for the New Zealand Conservation Authorities consideration.

## 2 Chair's Report

The Southland Conservation Board has had another busy year.

It is the first year since the Southland/Murihiku CMS was implemented. The Board has had to deal with several issues that were not considered in the CMS already. The Board is initiating a process to monitor the milestones set in the Strategy.

We have also had a busy year dealing with increasing numbers of concession applications and submissions on RMA consent applications

The Board's biggest disappointment was that the Review of the Fiordland National Park Plan was not started this year. The Board had placed this as top priority in this year's work plan. We are hoping that there will be sufficient Dept. planning staff available to begin the Review in early 2018. Meanwhile we look forward to seeing how the Westland and Mt Cook/Aoraki Plan Reviews have taken shape.

The Board has had an excellent relationship with the Otago Conservation Board. In November, the Boards jointly held a very successful Tourism Forum in Queenstown to get an understanding of the rapidly expanding tourism industry and how it impacts on the conservation estate. From the result of the Forum a Hui was held discussing the integrated management of the Te Waipounamu South West World Heritage Area. This was attended by the Otago, West Coast, Canterbury & Southland Board Chairs. Regular contact is maintained between these four Board Chairs.

I would like to acknowledge and thank the two retiring Board Members. Nick Humphries, our youngest Board member ever, has moved on to further his education and John Twidle resigned as he accepted a Community Relations job with the Dept. I am sure their roles in Conservation will continue.

Our three new Board members have come to the Board with enthusiasm and new ideas and their input is welcomed.

The Board is happy with its relationship with the Dept. of Conservation and its staff. The appointment of Statutory Manager, Donna Shepard, as Advisor & 'general go to person' to the Board has been beneficial. We have appreciated the support given by the DOC senior Management team; Alan Munn, Harry Maher, Tony Preston, Greg Lind & Bridget Carter.

I have especially appreciated the enthusiasm and efficiency of Kathryn Roberts, our Board Support officer.

Finally, I would like to thank all Members of the Board for their hard work within the Board and outside for conservation. Their hours of volunteered time go largely unnoticed but are valued.

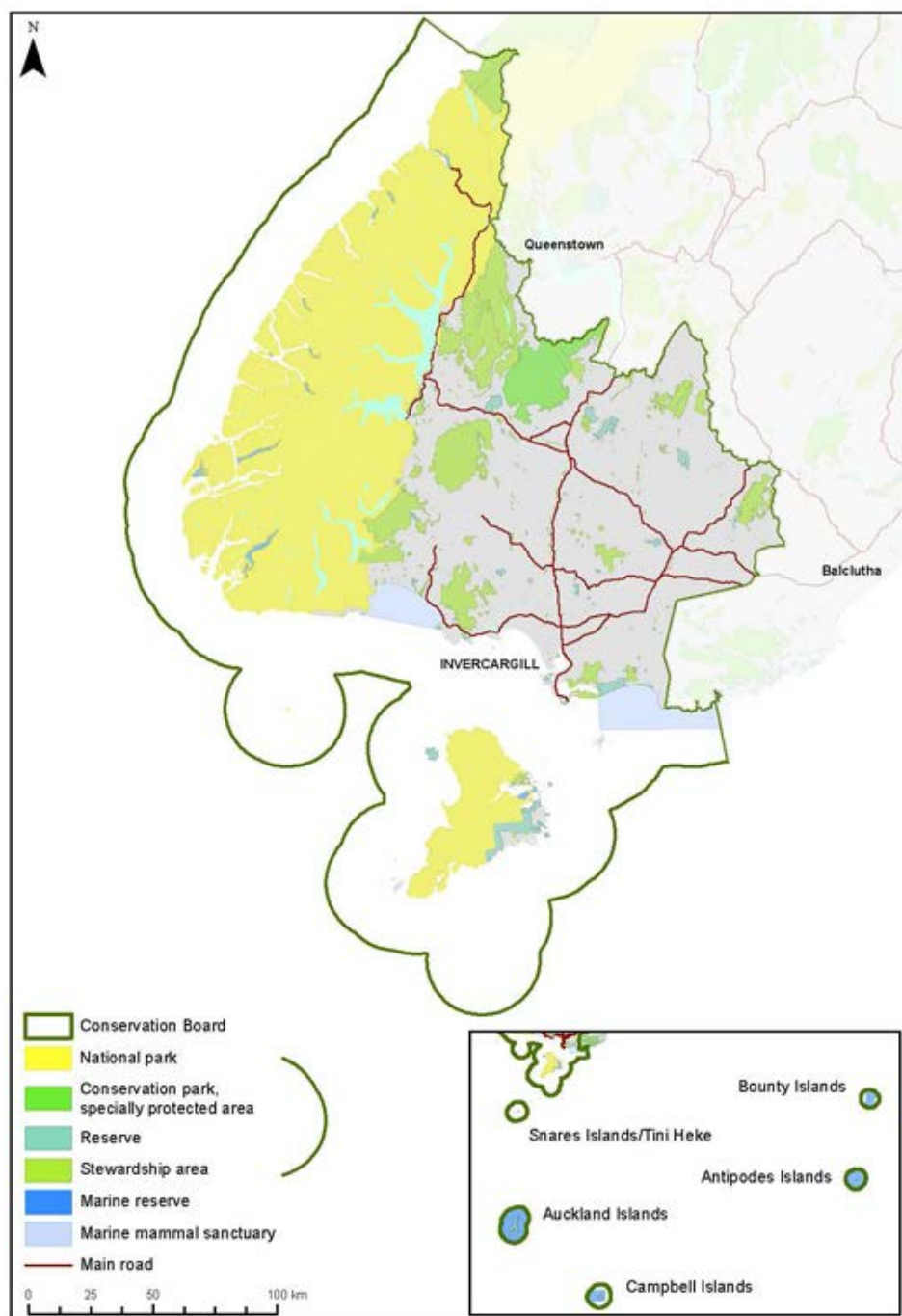


John Whitehead  
Chairman  
Southland Conservation Board

### 3 Southland Conservation Board Jurisdiction

The Southland Conservation Board has the largest area of jurisdiction of all Conservation Boards in New Zealand. Approximately 22% of all public conservation land in New Zealand lies within the Board region. Over half the land within the province of Southland is managed on behalf of all New Zealanders by the Department of Conservation. The Southland Conservation Board jurisdiction is vast, encompassing a total of 1.9 million hectares of land that is administered by the Department of Conservation and 574,286 hectares of marine reserve, also administered by the Department.

There are five significant areas of land within the Southland Conservation Board jurisdiction; the Sub-Antarctic Islands are a World Heritage Site. Āwarua Waituna Wetland is a wetland of International importance, Rakiura National Park, and Fiordland National Park which is part of Te Wāhipounamu, is a World Heritage site.





### **3.1 Sub Antarctic World Heritage Area**

The Sub-Antarctic Islands consist of the five southernmost groups of New Zealand off-shore islands; the Bounty Islands, the Antipodes Islands, the Snares Islands, the Auckland Islands and Campbell Islands. The Sub-Antarctic Islands were described by the United Nations Environment Program as “the most diverse and extensive of all Sub-Antarctic archipelagos”. The Sub-Antarctic Islands were granted the World Heritage Site Status in 1998. They are also a National Nature Reserve under the Reserves Act 1977. These Islands are home to number of rare species of birds, plants, marine mammals and invertebrates.

### **3.2 Fiordland National Park and World Heritage Area**

The Fiordland National Park was established in 1952 and is the largest national park in New Zealand at 1,260,200 hectares. The Fiordland National Park is part of Te Wāhipounamu World Heritage Site, and is home to the Takahē Recovery programme. Fiordland National Park has three of New Zealand’s Great Walks; Kepler Track, Milford Track and the Routeburn Track.

### **3.3 Rakiura National Park**

The Rakiura National Park was opened in 2002, this is New Zealand’s fifth largest and the newest National Park. It encompasses 139,000 hectares of land, and covers around 85% of the Island. Rakiura National Park also includes many offshore islands in Port Pegasus and Paterson Inlet.

### **3.4 Awarua-Waituna Wetland Ramsar Sites**

Southland was the first place in New Zealand to have a wetland officially recognised under the Ramsar Convention (an international treaty for the conservation and sustainable use of wetlands) when 3500 hectares of the Waituna Wetland Scientific reserve was registered in 1976. A further 15,400 hectares was added in 2008 which included three major estuaries; Toi Toi, Awarua Bay and New River. Awarua-Waituna Wetlands is one of the largest remaining wetland complex in New Zealand. This site includes four major wetland types; coastal lagoons, freshwater swamps, extensive peatlands and estuaries. The Department forms part of the Waituna Partners Group which also includes Ngai Tahu, Environment Southland and the Southland District Council to support the collaborative approach for agency involvement in the catchment. The Department also supports work in the wetland via the Arawai Kakariki programme and the catchment via the Living Water Partnership with Fonterra.

### **3.5 Marine Reserves and Marine Mammal Sanctuaries**

There are fifteen Marine Reserves and three Marine Mammal Sanctuaries within in the Board jurisdiction. These are the Catlins Coast Marine Mammal Sanctuary; Te Waewae Bay Marine Mammal Sanctuary, Auckland Island Marine Reserve and Marine Mammal Sanctuary and Moutere Hauriri (Bounty Island) Marine Reserve; Te Wharawhara (Ulva Island) Marine Reserve; Moutere Mahue (Antipodes Island) Marine Reserve; Moutere Ihupuku (Campbell island) Marine Reserve; Te Tapuwae o Hau (Long Sound) Marine Reserve; Taumoana (Five Finger Peninsula) Marine Reserve; Moana Uta (Wet Jacket Arm) Marine Reserve; Teipari Roa (Elizabeth I) Marine Reserve; Te Awaatu Channel (The Gut) Marine Reserve; Kutu Pārera (Gear Arm) Marine Reserve; Kahukura (Gold Arm) Marine Reserve; Hāwea (Clio Rocks) Marine Reserve; Te Hāpua (Sutherland Sound) Marine Reserve; and Piopiotahi (Milford Sound) Marine Reserve. The Southland Conservation Board has more marine reserves and marine mammal sanctuaries in their jurisdiction than any other conservation Board.

### 3.6 Other Conservation Land in Southland

In addition to the National Parks, World Heritage sites and Ramsar Wetlands, the Southland Conservation Board jurisdiction includes large forested mountainous areas on the mainland such as the Tākitimu, the Eyre and the Blue Mountains. Diverse coastlines, important estuaries and wetlands are features of the Southland landscape. There are areas in the Board’s jurisdiction which are special as they are used in breeding programmes for endangered species such as Burwood Red Tussock Reserve where there is a Takahē breeding unit, and Codfish Island/Whenua Hou where the kākākō breeding programme has taken place for some time and has recently been extended to Anchor Island.

## 4 Board Membership

During the 2016/2017 financial year, the Southland Conservation Board held six formal day meetings. For each formal meeting, Board member receive \$180 per day, and the chair receives \$240 per day.

Board member	Area	Term start	Term end	Term served
Alison Broad	Invercargill	01/07/14	30/06/20	3 Years
Andrew Bowmar	Gore	01/05/14	30/06/18	3 Years
Fiona Black	Te Anau	01/01/11	30/06/18	6.5 Years
Gail Thompson*	Bluff	16/10/06	30/06/18	10.5 Years
John Twidle <sup>∞</sup>	Te Anau	01/07/14	16/01/17	2.5 Years
John Whitehead	Te Anau	01/01/11	30/06/19	6.5 Years
Kyle Davis* <sup>∞</sup>	Christchurch	24/08/16	24/11/16	6 Months
Lloyd Esler	Invercargill	01/05/14	30/06/18	3 Years
Maurice Rodway	Invercargill	01/07/16	30/06/19	1 Year
Nick Humphries	Te Anau	01/07/14	30/06/17	3 Years
William Watt	Invercargill	01/07/16	30/06/19	1 Year

\*Ngāi Tahu Representative

<sup>∞</sup>resigned during the last reporting year



Photo on previous page: From left to right:

William Watt (SCB), Grant Tremain (DOC), Donna Shepard (DOC), Fiona Black (SCB), Lloyd Esler (SCB), Alison Broad (SCB), Robyn Roberts (DOC), Kathryn Roberts (DOC), Nick Humphries (SCB), Greg Lind (DOC), John Whitehead (SCB), Wendy Newton (DOC)

Board members not in photo:

Andrew Bowmar, Gail Thompson, John Twidle, Kyle Davis, and Maurice Rodway.

#### 4.1 Attendance

Board Member	Board meetings	Field trips	Special events
Alison Broad	4/6	1/2	1/1
Andrew Bowmar	4/6	0/2	0/1
Fiona Black	5/6	1/2	1/1
Gail Thompson*	4/6	0/2	1/1
John Twidle <sup>∞</sup>	3/3	N/A	1/1
John Whitehead	5/6	2/2	1/1
Kyle Davis* <sup>∞</sup>	0/2	N/A	0/1
Lloyd Esler	6/6	1/2	1/1
Maurice Rodway	5/6	1/2	0/1
Nick Humphries	5/6	1/2	1/1
William Watt	5/6	2/2	1/1

\*Ngāi Tahu Representative

<sup>∞</sup>resigned during the last reporting year

#### 4.2 Board Meetings Dates and Locations

Board meeting date	Meeting location and venue
19 August 2016	Department of Conservation, Murihiku Office
20 & 21 October 2016	Department of Conservation, Murihiku office
8 December 2016	Department of Conservation, Murihiku Office
16 February 2017	Department of Conservation, Murihiku Office
13 April 2017	Department of Conservation, Murihiku Office
25 May 2017	Kingsgate Hotel, Te Anau

#### 4.3 Field Trips

During the past year, the Southland Conservation Board undertook two field trips. These trips provided the Southland Conservation Board members with the opportunity to become familiar with their jurisdictions, conservation issues, and give them an opportunity to discuss management and implementation issues with staff from the Department of Conservation and with members of the local community.

Field Trip date	Field Trip destination and purpose
26 – 28 March 2017	Three Board members joined four DOC staff to help return the ‘Southern Winds’ after completing some work on Rakiura back to her home berth at Doubtful Sound. This was a great opportunity to help inform the Board going into the Fiordland National Park Management Plan review and the review of the Southland Coastal Plan.
24 May 2017	The Board travelled up the Milford Road into Milford Sound, stopping at several sites along the way. The Board was accompanied by DOC staff from Te Anau, who were able to explain the demand on the sites to the Board. This was another opportunity for the Board to inform themselves prior the Fiordland National Park Management Plan review.



Photo: Maurice Rodway and John Whitehead departing Bluff on Board the Southern Winds.



Photo on previous page: from left to right: Donna Shepard (DOC), John Whitehead, Kathryn Roberts (DOC) Lloyd Esler, Fiona Black, Nick Humphries, Robyn Roberts (DOC), Alison Broad, Greg Lind (DOC) and William Watt, inspecting the “White House” at Milford.

#### 4.4 Special Events

Event name and date	Purpose
Southland and Otago Conservation Board Tourism Forum 27 October 2016	<p>The Southland and Otago Board partnered in convening a meeting to hear a diverse range of views from a selection of interested parties, and local iwi about whether visitor growth can continue to expand or if limits have already been reached. The Boards will consider the information to better contribute to the review process of the Fiordland and Mount Aspiring National Park Management Plans and in advising the Department.</p> <p>Guest speakers were; Lou Sanson - <i>Department of Conservation</i>, Sandra Cook - <i>Ngāi Tahu</i>, René De Monchy - <i>Tourism New Zealand</i>, Chris Roberts - <i>Tourism Industry Aotearoa</i>, Gavin Wilson - <i>Department of Conservation</i>, Peter Wilson - <i>Federated Mountain Clubs</i> Dave Bamford - <i>Dave Bamford Tourism Consultants</i>.</p> <p>Attendees included representatives from local rūnanga, tourism operators, the Civil Aviation Authority, Milford Sound Development Authority, local district councils, Federated Mountain Clubs, New Zealand Alpine Clubs, Fish and Game, Tourism Export Council, local members of parliament and senior managers and planners from the Department of Conservation.</p>



Photo: Pat Garden of the Otago Conservation Board and John Whitehead listening to presentations at the Tourism Forum hosted in Queenstown

#### **4.5 Community Involvement in Board Meetings**

Throughout 2016/17, the Southland Conservation Board welcomed presentations at meetings and during field trips from a number of different organisations and individuals.

- Roy Sloan – Fiordland Wapiti Foundation & Herd of Special Interest
- Zane Moss and Michael Hartsonge – Fish & Game Council
- Richard Bowman – Regional Pest Management Plan
- Lisa and Craig Speight – Cheviot Downs Station
- Shaun Gilbertson – Back Country Pilots Association
- Paul and Lynley King – Helicopter landings at Ngapunatoru Glacier and Hunters Camp beside Shallow Bay Hut
- Steve Hoskin – Cycle trail

#### **5 Fiordland National Park Management Plan**

Throughout 2016/17, the Southland Conservation Board, prepared themselves for the beginning of the Fiordland National Park Management Plan review.

#### **6 Implementation Issues**

The Board considered implementation reports on the management plans for the Fiordland National Park and the Rakiura National Park. Board members were impressed overall with progress made and the range of work completed.

#### **7 Conservation Advocacy**

Under section 6(N) of the Conservation Act 1987, the Southland Conservation Board may advocate its interests at any public forum or in any statutory planning process.

During the 2016/17 year, the Southland Conservation Board made submissions or attended meetings on the following topics:

- Proposed Southland Water and Land Plan
- New Zealand Sea Lion Threat Management Plan
- Southland Coastal Plan Review
- Ngapunatoru Glacier Landings
- South East Marine Protection Forum
- Draft Kiwi Recovery Plan
- Aquaculture

## 8. Sub-Committees

### 8.1 Whenua Hou Committee

The Whenua Hou Committee is a sub-committee of the Southland Conservation Board, established under the Ngāi Tahu Settlements Act 1998, section 331 as part of a joint approach to manage the island. It consists of one representative from each of the four Murihiku papatipu rūnanga and four members of the Southland Conservation Board. In 2016/17 there were two formal meetings, and one additional meeting in regard to the organising of a new pou whenua.

Board representative	Rūnanga Representatives
Fiona Black	Cyril Gilroy (Waihopai)
Gail Thompson	Estelle Leask (Awarua)
John Whitehead	Tane David (Ōraka-Aparima)
Lloyd Esler	Rodney (Hom) Ryan (Hokonui)

## 9. Liaison

### 9.1 New Zealand Conservation Authority (NZCA)

The Chair receives minutes and agendas from NZCA regularly. Jan Riddell of the NZCA often attends the Southland Conservation Board meetings. The Chair also attended the annual National Board Chair's meeting in Wellington, which is led by the Chair of the NZCA.

### 9.2 Other Conservation Boards

The Southland and Otago Conservation Board Chairs are in regular contact with each other, as well as Maurice Rodway being the Board' liaison representative with the Otago Conservation Board and has the goal to attend one meeting a year. The Otago Conservation Board appointed Robyn Shanks and their representative who tries to attend one Southland Conservation Board meeting per year. All Board chairs within the South Island share agendas and minutes.

### 9.3 Iwi Liaison

The Deed of Settlement between Crown and Te Rūnanga o Ngāi Tahu and the Ngāi Tahu Claims Settlement Act 1998 require a number of decisions makers, including Conservation Boards within Ngāi Tahu takiwā to consult with and to have particular regard to the views of Te Rūnanga o Ngāi Tahu.

Gail Thompson and Kyle Davis are Ngāi Tahu representatives on the Board (appointed on the nomination of Te Rūnanga o Ngāi Tahu as established by Section 6 of the Te Rūnanga o Ngāi Tahu Act 1996), and are also members of Kaitiaki Roopū. Kaitiaki Roopū is a group of six representatives from the four Rūnanga in Southland and was established by the Department of Conservation to give effect to the principles of the Treaty of Waitangi and the Ngāi Tahu Claims Settlement Act. The Department consults with this group on a regular basis.

### 9.4 Fish and Game Council

The Board continues to liaise with the Southland Fish and Game Council on both a formal and informal basis.

## 9.5 Liaison with Other Organisations

Members of the Board have strong links with a number of community groups in Southland and are active participants in a range of conservation activities

Organisation/Group	Board Member
Hollyford Conservation trust	Andrew Bowmar
Deep Cove Outdoor Education Trust	William Watt
Southland aquaculture Reference Group	William Watt
Les Hutchins Conservation Foundation	Fiona Black
Manapouri Doubtful Sound Commercial User Group	Fiona Black
Fish and Game Southland	Gail Thompson
Predator free Rakiura Governance Group	Gail Thompson
South East Marine Protection Forum	Gail Thompson
Deep Cove Outdoor Education Trust	John Twidle
Guardians of Lakes Te Anau, Manapouri, and Hauroko	John Twidle
Les Hutchins Conservation Foundation	John Twidle
Manapouri Doubtful Sound Commercial User Group	John Twidle
Wilmot Pass Road User Group	John Twidle
Community Conservation Partnership Fund	John Whitehead
Fiordland Marine Guardians	John Whitehead
Pomona Island Charitable Trust	John Whitehead
Waiiau Wildlife & Fisheries habitat enhancement trust	John Whitehead
Waiiau working party	John Whitehead
Invercargill City Council	Lloyd Esler
Omaui Tracks Trust	Lloyd Esler
Otatara Land Care Group	Lloyd Esler
Southland Natural History Field Club	Lloyd Esler
Environment Southland	Maurice Rodway
Otago Conservation Board	Maurice Rodway

## 9.6 Media

Reporters from the Southland Times regularly attend Southland Conservation Board meetings throughout the year and several items have appeared in newspapers following the meetings.



## **10. Training**

The full Board undertook an induction workshop in August 2016 which provided background information on the region, the role of the Conservation Board, and local issues in addition to the regular updates on the Department's activities provided in the status report which is considered at each meeting. The Board also received additional briefings and updates. Topics covered this year were:

- Permissions and statutory land management processes
- The science behind the Battle for our Birds
- CMS review process
- Pilot programme updates
- Battle for our Birds update and outcomes
- Tenure review process and update on local properties
- Soundscape Monitoring
- South East Marine Protection Forum
- Kiwi Recovery Plan
- Herds of Special interest
- Local Government Official Information Meeting Act
- Visitor Number and Trends

## 11. Appendices

### Appendix 1 – Workplan Implementation Report

## Southland Conservation Board Work Programme

1 July 2016 – 30 June 2017

### Work Programme Overview

This Southland Conservation Board work programme has been developed in response to the Letter of Expectation from the Associate Minister of Conservation dated 19 July 2016. It is structured in three parts, namely:

Part A: Planned Board activities aimed at meeting the regional Work Programme contained in the letter:

- Review/development/monitoring of statutory management plans including Conservation Management Strategies (CMS);
- Advice relating to stewardship land;
- Other statutory functions for the Board;
- Advocacy

Part B: Planned Board activities aimed at general expectations contained in the letter:

- working with the Department;
- taking account of the Ministerial priorities for the Department as contained in the Department's Four-year Plan;
- working with adjoining Boards and the NZCA;
- understanding the Board's contribution to giving effect to the principles of the Treaty of Waitangi;
- general engagement with the community, including raising the profile of the Board

Part C: risks/issues from the Board's perspective, and opportunities for conservation growth that are not covered above.

## PART A: REGIONAL WORK PROGRAMME

### 1. Review / development of statutory management plans including Conservation Management Strategies (CMS)

#### 1.1. Board Objective:

The Board will carry out its statutory role by undertaking the following activities relating to the planning documents listed below

#### Planned Board Activities, Success Measures and Key Milestones

A	The Board will monitor and report on the new Southland Conservation Management Strategy.
B	The Board will monitor and report of the Rakiura National Park Management Plan.
C	The Board will monitor and report on the Fiordland National Park Management Plan.
D	The Board will look for inadequacies in the present Fiordland National Park Management Plan.
E	The Board will work in collaboration with the Department, Ngai Tahu and the community for the initiation and progression of the Fiordland National Park Plan review.

- A) *The Board is now working on a method to determine the progress towards the three year Milestones of the Southland Murihiku CMS.*
- B) *The board has received an implementation report for the Rakiura National Park Management Plan and reviewed the Rakiura National Park Milestone progress.*
- C) *The Board has received an implementation report for the Fiordland National Park Management Plan*
- D) *It has been a major disappointment for the SCB this year that the Fiordland National Park Management Plan Review has not started. This is due to the lack of planning resources within the Dept. The Board has been doing background information gathering with a field trip to Milford Sound to look at the pressures caused by rapidly increasing tourism and the inadequacy of the present infrastructure to cope with the demand. We have tried to keep informed on the increased helicopter landings on the Ngapunatoru Plateau and the monitoring involved.*
- E) *The Department has started to hold meetings and public forums in Te Anau in preparation for the Fiordland National Park Management Plan review and is planning to hold a meeting at a local marae as the review begins.*

### 2. Stewardship Land

#### 2.1. Board Objective:

The board will provide the Minister and the Department with advice on priorities for reclassification of Stewardship areas that require increased protection because of their signification conservation values.

#### Planned Board Activities, Success Measures and Key Milestones

A	The Board will advocate to the Department that at least one Stewardship area in Southland is progressed to a more suitable classification this year.
---	--

- A) *The Southland Conservation Board gave advice to the Department that it would like to see the Stewardship land that is within the Te Wāhipounamu World Heritage area be reclassified to either National Park Status or Conservation Park status.*

### 3. Other Statutory Functions

#### 3.1. Board Objective:

The Board will nurture ongoing working relationships with Fish and Game Councils regarding issues of mutual interest within the region

#### Planned Board Activities, Success Measures and Key Milestones

A	The board will maintain a liaison with the local Fish and Games Council on matters relating to water and aquatic ecosystems.
---	--

- A) *The Board now has a representative who attends Fish & Game Council Meetings. Zane Moss, the manager of Fish and Game Southland Region, gave a presentation to the Board on water quality issues in Southland*

### 4. Advocacy

#### 4.1. Board Objective:

The Board will pursue all reasonable opportunities to advocate at public forums and in any statutory planning processes

#### Planned Board Activities, Success Measures and Key Milestones

A	The Board will give advice to the Department and will advocate where possible on the threat of wilding species and other invasive weeds in Southland.
---	---

B	The Board will advocate to and support the Department to continue the eradication of pests on the Southern Islands specifically the removal of pigs and cats from the Auckland Islands, and work with the Stewart Island community to make Stewart Island Predator free.
---	--

C	The Board will advocate to the Department and the other bodies involved to find funding to restore the South Coast Viaducts to a safe condition and maintain them for future generations.
---	---

D	The board will advocate for increasing Marine protection especially in the South East Protected Marine area, and managing the areas already protected.
---	--

- A) *The SCB has had discussions with the Dept. on wilding conifers on Mid Dome, the Eyre Mountains, and the Tākitimu Mountains. The Board has also liaised with the Regional Council on its Pest Management Plan.*
- B) *The Board is pleased that the Dept. is prioritising the Auckland Island pest eradication and that planning has started.*
- C) *The Board is pleased to hear that funding has been found for the restoration of the South Coast Viaducts and work will begin in the next year.*
- D) *The SCB submitted on the South East Protected Marine Area draft plan advocating for increased marine protection. The Board has also been involved in making sure any new salmon farming venture in the waters around Stewart Island does not impinge on the wilderness values and the biodiversity values of the area.*

## PART B: GENERAL EXPECTATIONS

### 5. Working with the Department

#### 5.1. Board Objective:

Board members will maintain good working relationships and open dialogue with Directors, Managers and Board Support Officers in order to engage strategically in conservation for the region.

#### Planned Board Activities, Success Measures and Key Milestones

A The Board will maintain and enhance the relationship with the Department at all levels.

B The Board Chairman will have regular dialogue with the Southern Director and Regional managers.

A) *This year the board saw a change of Directors and Allan Munn moved to another region in the North Island and Harry Maher became the interim Director. The board are awaiting the news of the new permanent Director.*

B) *The board has continued to have a good relationship with the Department through the Statutory Manager and the Operations Managers.*

### 6. Taking account of Ministerial priorities for the Department

#### 6.1. Board Objective:

The Board will identify opportunities to support community conservation targeting kiwi

#### Planned Board Activities, Success Measures and Key Milestones

A The Board will advocate strongly on the 'The war on weeds'.

B The Board will support the Battle for our Birds Campaign.

A) *The board has not advocated for the 'war on weeds' this year*

B) *The Board has been delighted with the success of this year's 'Battle for our Birds' aerial poison programme. With the monitoring showing a good pest knock down and bird nesting success.*

#### 6.2. Board Objective:

The Board will identify opportunities for building relationships to support the Healthy Parks / Healthy People programme.

#### Planned Board Activities, Success Measures and Key Milestones

A The Board will look for opportunities to enhance the Healthy parks/ Healthy People programme.

A) *The board supported the department's involvement in the MAD day out in early 2017.*

### 7. Working with adjoining Board and the NZCA

#### 7.1. Board Objective:

Board members will liaise with neighbouring conservation boards in order to progress cross boundary CMS issues and other matters of mutual interest.

#### Planned Board Activities, Success Measures and Key Milestones

A The board will work with the Otago Conservation Board on cross boundary issues as the Mount Aspiring National Park Plan is also going through a review.

B The Board will run a seminar on 'Managing the growth of visitor activity on conservation land' with

the Otago Conservation Board.

- A) *The Southland and Otago Board co-hosted a forum in late 2016 to help inform each board before the Fiordland Mount Aspiring National Park Plan reviews. This strengthened the relationships between the two boards. Both boards are looking at having a joint meeting in early 2018.*
- B) *The Southland and Otago Conservation Boards held a very successful Tourism forum in Queenstown with all the big players in the Tourism industry, Iwi and Federated Mountain Clubs. A good understanding of where each of the groups saw the value of tourism and ways to mitigate any adverse effects from increasing tourist numbers was developed by the forum. Ideas on how to integrate the management of the Te Wai Pounamu SW World Heritage Area between the four Conservation Boards were put forward and a future DOC, Board forum to explore this further was suggested for next year.*

## **8. Understanding the Boards contribution to giving effect to the principles of the Treaty of Waitangi**

### **8.1. Board Objective:**

The Board will understand and support the Board's and Department's obligations under Treaty settlements as well as principles under section 4 of the Conservation Act.

#### **Planned Board Activities, Success Measures and Key Milestones**

**A** The Board will maintain a close liaison with the local rūnanga and will plan on having one board meeting on a local marae.

- A) *Unfortunately, most of this work on increasing our profile revolved around the upcoming Fiordland National Park Management Plan Review, however the board is planning to hold a meeting on a local marae in 2018.*

## **9. Engaging**

### **9.1. Board Objective:**

Board members will take the initiative to meet with community groups and the general public to gauge community reaction to conservation initiatives planned or implemented by DOC

#### **Planned Board Activities, Success Measures and Key Milestones**

**A** The Board will work on increasing its profile in the community through the Fiordland National Park Management Plan review and being part of the Departments outreach.

**B** The 'Managing the growth of visitor activity on conservation land' seminar will seek a wide range of perspectives from the tourism industry, commercial operators and user groups such as FMC and Forest & Bird.

- A) *The board holds a public forum at each meeting, as well as have a Southland Times Reporter attending most meetings, with regular articles in the New Papers.*
- B) *As mentioned further above the Southland and Otago Conservation Boards held a very successful tourism forum in Queenstown with all the big players in the tourism industry, Iwi and Federated Mountain Clubs. A good understanding of where each of the groups saw the value of tourism and ways to mitigate any adverse effects from increasing tourist numbers was developed by the forum. Ideas on how to integrate the management of the Te Wai Pounamu SW World Heritage Area between the four Conservation Boards were put forward and a future DOC, Board forum to explore this further was suggested for next year.*

## PART C: RISKS AND OPPORTUNITIES

### 10. Risks from the Board's perspective

A There is always the risk of Board Member Burnout. We have to remember that this is a voluntary role that has to fit around member's personal life.

B This will be managed by attempting to prioritise the workload and perhaps letting somethings go.

A) *This year each board member has managed to balance their board commitments and their personal life*

B) *The work has been prioritized as it has come into the board and some things have been dealt with outside of the meeting.*

### 11. Opportunities for conservation growth

A The Board is always on the lookout for ways to grow conservation.

A) *The board has continued to look for ways to grow conservation in Southland*

Appendix 2 – Southland Murihiku Conservation Management Strategy implementation monitoring report

<b>Southland Murihiku Conservation Management Strategy Implementation Monitoring Report</b>	
DOC-2582412	
<b>Column heading explanation:</b>	
<b>Milestone:</b>	From Southland Murihiku Conservation Management Strategy 2016
<b>Status:</b>	
	Underway in current business plan and on track to achieve by target date.
	Underway but either very complex, or has issues that may affect achievement by target date if not managed well.
	Will not meet target date as work has either stalled, or will take longer than expected, or where it is proposed to seek agreement with the Board to drop the milestone and not proceed with the work.
	Not started and not yet programmed for work.
<b>Progress:</b>	Progress report on achievement of the milestone.
<i>Progress statement required every report on status red and amber milestones and especially significant achievements for status green milestones.</i>	
<i>Progress statement required at end of year on progress of all milestones, <b>except those with status white.</b></i>	
<b>Changes to milestone target date:</b>	
<i>Note any changes to the target date for a milestone, only where <b>agreement</b> has firstly been reached between the Board and the Department. The milestone reverts to status green, but with a tag to note the target year has been changed by agreement.</i>	
<b>Achievement of milestone</b>	Where a milestone has been fully achieved, it will be removed from the list at the end of the reporting year.
<b>Removal of milestone</b>	Where it has been agreed between the Board and the Department that the milestone will no longer be progressed, it will be removed from the list at the end of the reporting year.
<b>Other achievements</b>	If required, provide additional information to briefly describe any significant achievements advancing CMS outcomes and objectives that are not tied to a milestone.



Milestone	Status
<b>1.4 Treaty partnership with Ngāi Tahu – Achieved by the end of Year 3 (2019)</b>	
An agreed 'partnership framework' has been developed with Ngāi Tahu to implement and monitor the Treaty partnership with respect to the management of conservation lands in Southland Murihiku.	
A process has been established between the Department and Ngāi Tahu to prioritise, review, develop and implement protocols and guidance documents addressing Ngāi Tahu Claims Settlement Act 1998, Conservation Protocols and section 4 Conservation Act 1987 matters.	
Measures to protect, encourage respect for, and provide for active involvement of Ngāi Tahu in the management of sites and species of significance to Ngāi Tahu have been formally put in place.	
Guidelines on the use of taonga species and sites of significance to Ngāi Tahu within advertising and promotional material have been mutually formalised and implemented.	
A process has been mutually agreed to, and implemented, that will enable the Department to identify and support conservation-related projects of strategic priority to Ngāi Tahu.	
<b>Part 1 Milestones: 1.5.1 Natural heritage – Achieved by the end of Year 3 (2019)</b>	
Scheduled outputs identified in approved work programmes for priority ecosystem units in Southland Murihiku.	
Scheduled outputs identified for threatened species outside priority ecosystem units for which a work programme is underway in Southland Murihiku.	
Identification of collaborative restoration opportunities for ecosystems and species in Southland Murihiku, in conjunction with Ngāi Tahu and the community.	
Control of wilding conifers in Southland Murihiku in accordance with the New Zealand Wilding Conifer Management Strategy 2015-2030.	
<b>Other achievements for natural heritage:</b>	

<b>Part 1 Milestones: 1.5.2 Historic and cultural heritage – Achieved by the end of Year 3 (2019)</b>		
A baseline report on the condition of actively conserved historic places listed in Appendix 10, including identification of Ngāi Tahu values.		
Identification of new sites for inclusion in Appendix 10, including sites important to Ngāi Tahu.		
Information on actively conserved historic places is available on the Department's website.		
<b>Other achievements for historic and cultural heritage</b>		
<b>Part 1 Milestones: 1.5.3 Recreation – Achieved by the end of Year 3 (2019)</b>		
A baseline report on the number and condition of huts, tracks and other visitor facilities in Southland Murihiku and the numbers and satisfaction of people using these facilities		
Progress in building partnerships with the community to maintain and develop Local Treasure and Backcountry destinations in Southland Murihiku.		
<b>Other achievements for recreation</b>		
<b>Part 1 Milestones: 1.5.4 Community engagement – Achieved by the end of Year 3 (2019)</b>		
Identification of initiatives aimed at increasing the amount of conservation achieved with community partners in Southland Murihiku.		
Stakeholder satisfaction with community engagement in Southland Murihiku.		

**Other achievements for community engagement**

--	--	--

**Part 1 Milestones: 1.5.5 Business partnerships – Achieved by the end of Year 3 (2019)**

Identification and assessment of programmes and their outcomes aimed at increasing the amount of conservation achieved with business partners in Southland Murihiku.	
--	--

**Other achievements for business partnerships**

--	--	--

**Part 2 Milestones: Tākitimu Place - Achieved by the end of Year 3 (2019)**

Identification of initiatives to protect and celebrate the conservation, cultural and historic values present within the Tākitimu Place.	
--	--

Initiated monitoring of aircraft activity in the Tākitimu Place.	
--	--

**Other achievements for Tākitimu Place**

--	--	--

**Part 2 Milestones: Fiordland Te Rua-o-te-moko Place - Achieved by the end of Year 3 (2019)**

Implementation of work programmes for the marine reserves in the Fiordland Te Rua-o-te-moko Place.	
--	--

Input into Southland Regional Council planning processes to ensure that the southern fiords are being managed to retain their wild and isolated nature.	
---	--

Initiated an investigation to add the Arawhata (southern part), Pyke Forest, Dean Forest and Rowallan Forest conservation areas, the Diggers Ridge, Lilburn and Waikoau ecological areas, and the foreshore, to Fiordland National Park.

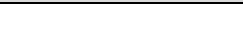


**Other achievements for Fiordland Te Rua-o-te-moko Place**



**Part 2 Milestones: Western High Country Mata-puke Koikoi Place - Achieved by the end of Year 3 (2019)**

Initiated an investigation to add parts of Mavora Park and Snowdon Forest Conservation Areas to Fiordland National Park.



Initiated investigations to seek improved protection of important wetlands on and off public conservation lands and waters in the Western High Country Mata-puke Koikoi Place.



**Other achievements for Western High Country Mata-puke Koikoi Place**



**Part 2 Milestones: Eastern High Country Mata-puke Taratara Place - Achieved by the end of Year 3 (2019)**

Initiated discussions with adjacent landowners, the community and the New Zealand Walking Access Commission to improve public access to public conservation lands and waters within the Eastern High Country Mata-puke Taratara Place.



Initiated monitoring of the effects of recreational hunting and deer within the Blue Mountains Recreational Hunting Area.



**Other achievements for Eastern High Country Mata-puke Taratara Place**



<b>Part 2 Milestones: Longwood O Hekeia Place - Achieved by the end of Year 3 (2019)</b>		
Initiated research and surveys, in partnership with others, to improve knowledge of the archaeological, cultural and historic values of the Longwood O Hekeia Place and to provide a better understanding of the relative importance of sites.		
<b>Other achievements for Longwood O Hekeia Place</b>		
<b>Part 2 Milestones: Freshwater Wai Māori Place - Achieved by the end of Year 3 (2019)</b>		
Contributed to work, alongside Ngāi Tahu, regional agencies and the community, to improve the integrated management of the freshwater ecosystems in Southland Murihiku.		
Maintenance or improvement of the water quality of significant lakes and wetlands within the Freshwater Wai Māori Place.		
<b>Other achievements for Freshwater Wai Māori Place</b>		
<b>Part 2 Milestones: Lowlands Te Rā a Tākitimu Place - Achieved by the end of Year 3 (2019)</b>		
Identification, in conjunction with Ngai Tāhu, relevant agencies and the community, of improvements to visitor facilities within the Lowlands Te Rā a Tākitimu Place.		

**Other achievements for Lowlands Te Rā a Tākitimu Place**



**Part 2 Milestones: Awarua Place - Achieved by the end of Year 3 (2019)**

Work underway, in conjunction with Ngāi Tahu, relevant agencies and the community, to raise awareness of the threats to important ecosystems within the Awarua Place.



Initiated monitoring of the effects of motor vehicle use on Toetoes Harbour Spit Conservation Area (Fortrose Spit).

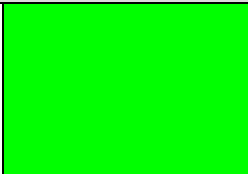


**Other achievements for Awarua Place**



**Part 2 Milestones: Foveaux Te Ara a Kiwa Place - Achieved by the end of Year 3 (2019)**

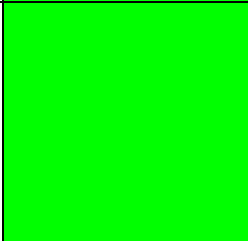
Work underway, in conjunction with Ngāi Tahu, relevant agencies, the fishing industry and the community, to protect, promote and increase awareness of the important values of the Foveaux Te Ara a Kiwa Place.



Initiated research to assess the effects of marine mammal viewing operations in the Foveaux Te Ara a Kiwa Place on marine mammals.



Assessed the effectiveness of the permit system and code of practice for commercial cage diving with the mangō-taniwha/great white/white pointer shark.



**Other achievements for Foveaux Te Ara a Kiwa Place**



**Part 2 Milestones: Sub Antarctic Ngā Moutere O Murihiku Ki Tonga Place - Achieved by the end of Year 3 (2019)**

Reviewed the Sub Antarctic Island Research Strategy.	
Identified new ways that the public and businesses are able to support the management of the Sub Antarctic Ngā Moutere O Murihiku Ki Tonga Place.	
Initiated investigations to eradicate the remaining introduced animals from the Sub Antarctic Ngā Moutere O Murihiku Ki Tonga Place.	
Developed, in consultation with Ngāi Tahu, concessionaires and other relevant stakeholders, a Sub Antarctic Visitor Management Plan.	
Developed a strategy for managing historic sites within the Sub Antarctic Ngā Moutere O Murihiku Ki Tonga Place.	

**Other achievements for Sub Antarctic Ngā Moutere O Murihiku Ki Tonga Place**



**Part 3 Milestones: Specific policy requirements – Achieved by the end of Year 3 (2019)**

Initiated investigation to identify legal roads adjoining public conservation lands and waters in Southland Murihiku where improved management is required.	
Initiated investigations to address the status of unauthorised private accommodation and related facilities on public conservation lands and waters in Southland Murihiku.	
Identified locations on public conservation lands and waters in Southland Murihiku where motorised vehicle, electric power-assisted pedal cycle, mountain bike and/or horse and pack animal use may require monitoring of effects.	

**Other achievements for specific policy requirements**