

Southland Conservation Board Te Roopu Atawhai o Murihiku

Annual Report



To the New Zealand Conservation Authority

1 July 2013 - 30 June 2014

Southland Conservation Board

Annual Report

1 July 2013 - 30 June 2014

**Presented to the New Zealand Conservation
Authority Pursuant to Section 6(O) of the
Conservation Act 1987**

Serviced by the Department of Conservation
Southland Conservancy
PO Box 743
33 Don Street
Invercargill 9840

FRONT COVER:
Southland Conservation Board members on the Kepler Track, Fiordland,
November 2013

ISBN 1172-9198 (hard copy)
ISBN 1179-4224 (on line)

Contents

1	CHAIRMAN'S REPORT	4
2	INTRODUCTION.....	6
3	THE BOARD'S AREA	7
4	BOARD MEMBERSHIP	9
5	BOARD MEETINGS AND FIELD TRIPS	9
5.1	BOARD MEETINGS.....	10
5.2	FIELD TRIPS	10
5.3	COMMUNITY INVOLVEMENT IN BOARD MEETINGS	11
6	SOUTHLAND CONSERVATION MANAGEMENT STRATEGY (CMS).....	12
7	IMPLEMENTATION ISSUES	12
8	SUBCOMMITTEES.....	14
9	LIAISON.....	15
9.1	NEW ZEALAND CONSERVATION AUTHORITY.....	15
9.2	OTHER CONSERVATION BOARDS.....	15
9.3	IWI LIAISON	16
9.4	FISH AND GAME COUNCIL	16
9.5	LIAISON WITH OTHER ORGANISATIONS	16
9.6	MEDIA.....	16
10.	APPENDICES	17
	APPENDIX 1: ATTENDANCE AT FORMAL BOARD MEETINGS AND FIELD TRIPS	17
	APPENDIX 2: SUBCOMMITTEES OF THE SOUTHLAND CONSERVATION BOARD.....	18
	APPENDIX 3: BOARD MEMBERS' CONSERVATION ACTIVITIES IN THE COMMUNITY	19

1 Chairman's Report

The past year has been one of uncertainty as the Southland Conservation Board has watched the restructure of the Department and the subsequent changes in staff and in the whole structure. The resulting changes have caused considerable stress on the Department staff, and also to the Board that work with the staff. New positions created, new staff, and new roles have meant Board members have needed to build new relationships.

Along with the uncertainties of the Departmental restructure Board members were also facing uncertainty with the Board Review being undertaken. Over the past three years no new members had been appointed to the Board and all members except two iwi representatives were due to retire.

The Board review left Boards roles largely unchanged and in April the Minister announced new appointments of six new members in Southland. It was a relief to at last be able to feel secure in the way ahead. Although the changes to the Board membership meant much knowledge has been lost, we have a wealth of ability and experience with the new members.

The Conservation Management Strategy continues to be pressing work for the Board. The process began in 2010 and still appears to be several months away from being ready to hand over to the New Zealand Conservation Authority. It is of concern to this Board that the process is so long and drawn out between the initial "hand shake with the public" and the final review by the Board.

Focus for the Board this past year has included water quality throughout the region, with Awarua Wetlands / Waituna still under threat. There have been many and varied other issues before the Board, and often the Board has not heard the results of its advice, however with the Department restructure complete, in future there should be regular reporting on the outcome and value of the advice given.

Two long standing proposed projects have been declined by the Conservation Minister Nick Smith. The Dart Passage which included a tunnel from Routeburn to Hollyford, and the Fiordland Link which involved a Monorail being built on Conservation land were both declined. This Board had submitted against both projects on similar grounds that the Minister gave; the cost to the environment and the financial risk. It is heartening that the Board's advice was heeded.

We were sorry to farewell long standing Board members. Robin McNeill served on the Board for over ten years and oversaw the introduction of the Fiordland National Park Management Plan and nurtured the Stewart Island/Rakiura Conservation management Strategy and the Rakiura National Park Management Plan from their beginnings to final adoption. Robin knew this land well, and had an enormous grasp on the Conservation Act, indeed could quote it verbatim when necessary.

Viv Shaw also left the Board in April after nearly seven years. For most of those years Viv was Chair of the Board and under her guidance the Board steered through many thorny issues while keeping the principles of the Conservation Act foremost. Her intense passion for the biodiversity assisted her to be focussed on the issues that matter.

Paul Duffy also left after nearly seven years, Peter Ridsdale served three and a half years and Karyn Owen served nearly three years. We thank them all for their commitment to the board and conservation.

The Board is also acknowledges the sterling work of the Board Liaison Officer Yvonne Service, and the support received from Phil Melgren, Barry Hanson, Allan Munn and all other Department staff that have been called on to provide information to the Board.

Members of the Board continue to work hard for conservation, not only through attendance at Board meetings, but also through their work on subcommittees and in many cases by being involved on other community-based, conservation-related organisations. Their hours of volunteered time go largely unnoticed but are valued.



Helen McPhail
Chairman
Southland Conservation Board

2 Introduction

The Southland Conservation Board is one of the fourteen statutory bodies appointed by the Minister of Conservation under Section 6L of the Conservation Act 1987.

The functions and powers of the Board as outlined in Sections 6M and 6N of the Act are as follows:

- To review, amend and recommend the approval of Conservation Management Strategies
- To review and approve Conservation Management Plans
- To provide advice on the implementation of Conservation Management Strategies and Plans
- To advise on proposed changes to the status of land areas of national or international significance
- To advise on proposals for new walkways
- To liaise with Fish and Game Councils on conservation matters
- To carry out other powers and functions as delegated to the Board by the Minister of Conservation under the Conservation Act or any other Act
- To advocate its interests at any public forum or in any statutory planning process and to be heard on matters relating to the Board's functions.

Under the National Parks Act 1996, the Board also has a number of functions as follows:

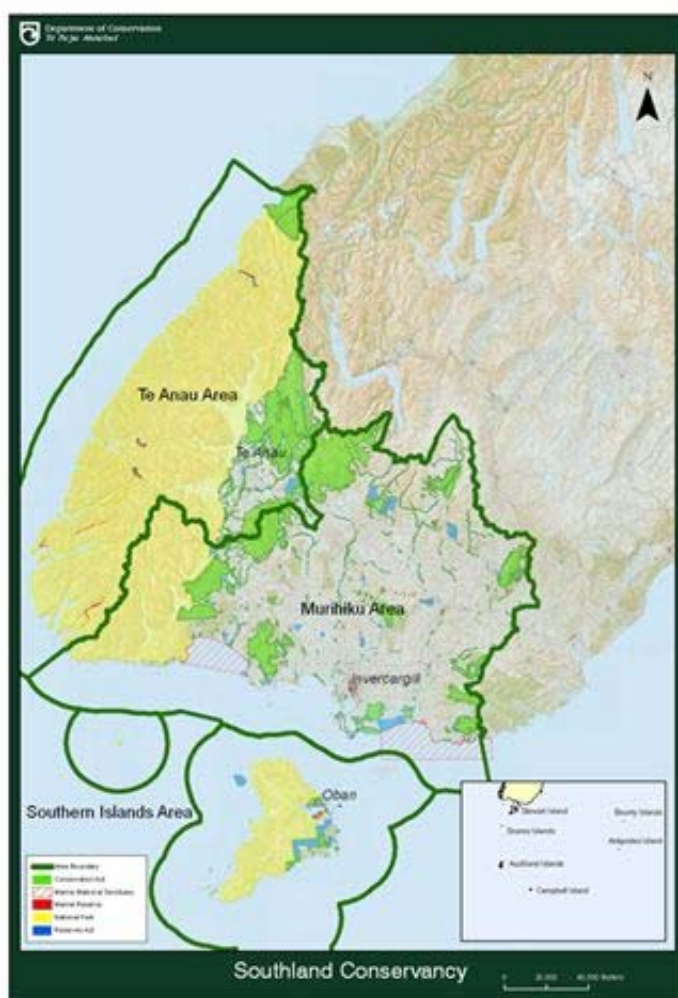
- To review, amend and recommend National Park Management Plans
- To consider and determine priorities for the implementation of Management Plans for national parks
- To make recommendations to the Minister for the appointment of honorary rangers
- To review and report on the effective administration of the general policies for national parks
- To give advice on the interpretation of any National Park Management Plan, on the addition of land to a national park or the establishment of a new national park
- To give advice on any other matter relating to any national park within the Board's jurisdiction.

These functions and powers, where exercised, are noted within this annual report. The report covers the period 1 July 2013 to 30 June 2014.

3 The Board's Area

The Southland Conservation Board has the largest area of jurisdiction of all Conservation Boards in New Zealand. Over half of the land within the province of Southland is managed on behalf of all New Zealanders by the Department of Conservation. The Southland Conservancy is vast, encompassing a total of 1.9 million hectares of land that is administered by the Department and 574,286 hectares of marine reserve (of which the Auckland Islands Marine Reserve makes up 562,812 hectares).

Two significant areas of land within the Board's jurisdiction have World Heritage status – the Subantarctic Islands and Fiordland National Park. Another area is an internationally recognised Ramsar wetlands site – Awarua Wetlands.



World Heritage Areas

Subantarctic Islands

Isolated, windswept, beautiful and fragile, New Zealand's Subantarctic islands are unique, the flora and fauna irreplaceable. Described by the United Nations Environment Program as "the most diverse and extensive of all Subantarctic

archipelagos”, all five island groups: the Bounty Islands, the Antipodes Islands, the Snares Islands, the Auckland Islands and Campbell Island were honoured with World Heritage status in 1998. They are also National Nature Reserves under New Zealand’s Reserves Act 1977. New Zealand’s Subantarctic Islands are located in the Southern Ocean south to south-east of New Zealand. Spanning six degrees of latitude, from 47 to 52 degrees south, the five island groups occupy the stormy latitudes of the Roaring Forties and Furious Fifties, known also as the Albatross Latitudes. The islands contain a high degree of endemism and are home to a number of rare species of birds, plants, marine mammals and invertebrates. The New Zealand Subantarctic region supports the most diverse community of breeding seabirds in the southern ocean. Their isolation presents a number of challenges, and a separate Conservation Management Strategy outlines the way in which the islands should be managed. This CMS is currently under review as part of the Southland Murihiku CMS.

Fiordland National Park

Fiordland National Park, established in 1952, is the largest national park in New Zealand (1,260,200 hectares). At the heart of Te Wāhipounamu/South West New Zealand World Heritage Area, Fiordland National Park includes some of New Zealand’s most recognised and special places including Milford Sound/Piopiotahi. It has high cultural, historical and biodiversity significance and offers a wide range of visitor opportunities, from scenic viewing points to intense wilderness experiences. The Fiordland National Park Management Plan sets out how the Park should be managed.

Ramsar Sites

Southland was the first place in New Zealand to have a wetland officially recognised under the Ramsar Convention (Convention on Wetlands of International Importance) when 3500 ha of the Waituna Wetland Scientific Reserve was registered in 1976. A further 15,400 ha was added in 2008 which included the three major estuaries; Toi Toi, Awarua Bay and the New River. These three estuaries are a unique feature of Southland and are still relatively unspoiled compared to similar waterways in other parts of the country. Alarmingly, Waituna has now gained further national attention as being at risk of Management of the Waituna lagoon continues to rely on scientists from the Department and Environment Southland for best practice to prevent further degradation of this site. The Board has taken an active interest in this management.

National Parks

There are two National Parks within the Board’s jurisdiction – **Fiordland National Park** (mentioned above) and **Rakiura National Park**. Opened in 2002, Rakiura is New Zealand’s fifth largest and newest National Park. It encompasses 139,000 hectares of land, and comprises 85% of New Zealand’s third main island – Stewart Island/Rakiura. The Park extends from the northwest of the island to South Cape, and includes many offshore islands in Port Pegasus/Pikihatiti and Paterson Inlet/Whaka a Te Wera.

Other Conservation Land in Southland

In addition to the National Parks, World Heritage Areas and Ramsar wetlands, the Board’s area of jurisdiction includes large forested, mountainous areas on the mainland such as the Takitimu, Eyre, and Blue Mountains; diverse coastlines,

important estuaries and wetlands areas such as Curio Bay and at Burwood Red Tussock reserve where there is a Takahē breeding unit.

On Stewart Island/Rakiura, the Board's area of jurisdiction covers conservation lands outside of the Rakiura National Park. This includes Codfish Island/Whenua Hou, home to the critically endangered Kākapo, which is managed as a Nature Reserve and for which the Board provides management advice through membership of the Whenua Hou Committee.

The Southland Conservation Board has a responsibility to the people of Southland and the wider New Zealand population to ensure that conservation lands within its jurisdiction and the biodiversity they contain are protected and enhanced.

4 Board Membership

The following table lists the membership of the Southland Conservation Board between 1 July 2013 and 30 June 2014 and their term of office.

Name	Area	Date first appointed	Term ends/ended	Time served
Fiona Black	Te Anau	23/12/2010	30/06/2015	3½ years
Andrew Bowmar	Gore	01/05/2014	30/06/2015	2 months
Stewart Bull*	Riverton/Aparima	04/06/2009	30/04/2016	5 years
Paul Duffy	Seaward Downs	01/09/2007	31/03/2014	6½ years
Lloyd Esler	Invercargill	01/05/2014	30/06/2015	2 months
Peter Jones	Gore	01/05/2014	30/06/2017	2 months
Robin McNeill	Invercargill	01/09/2003	30/04/2014	10½ years
Helen McPhail	Gore	31/08/2008	30/06/2016	6 years
Karyn Owen	Invercargill	19/09/2011	30/06/2014	2 yrs 9mths
Peter Ridsdale	Invercargill	23/12/2010	30/06/2014	3½ years
Viv Shaw (Chair)	Te Anau	01/09/2007	30/04/2014	6 years
Gail Thompson*	Bluff/ Awarua	16/10/2006	30/06/2015	7 years
John Whitehead	Te Anau	01/01/2011	30/06/2016	3½ years

(*Ngai Tahu Representative)

5 Board Meetings and Field Trips

During the 2013/14 financial year the Board held seven formal day meetings. For each formal meeting Board members receive \$140 per day, and the Chair receives \$190 per day. From 1 May 2014 the attendance fees increased to \$180 per day for Board members and \$240 per day for the Chair. Individual Board members' participation in Board meetings and field trips is noted in Appendix 1.

5.1 BOARD MEETINGS

Meeting dates and locations

Date	Location
4 July 2013	Invercargill
7 August 2013	Invercargill
12 October 2013	Te Anau
12 December 2013	Invercargill
4 February 2014	Tuatapere
4 April 2013	Invercargill
12 June 2014	Invercargill

5.2 FIELD TRIPS

During the past year the Board undertook three field trips. Field trips provide the Board with the opportunity for members to become familiar with conservation issues and to discuss management and implementation issues with Department staff and members of the local community.

WAITUNA FIELD TRIP (7 August 2013)

After a morning Board meeting, members travelled to Waituna and flew over the catchment looking at the areas of farm development and Environment Southland's ongoing work with bank battering. This aerial overview gave Board members a valuable insight as to the sheer size of the area and the complexities of managing it. After landing at the lagoon area, Polly Bulling explained the problems currently being encountered and the effects of the lagoon being open to the sea.

TE ANAU FIELD TRIP (10 October 2013)

The Board's October meeting was held at Te Anau and was preceded by a field trip to Cosy Nook on Lake Manapouri, Moturau Hut and the Kepler Track, where Board members viewed areas that Kepler Guided walks are proposing a boat landing site to collect passengers and erect a shower block. After lunch at Moturau Hut, members walked back to Rainbow Reach whilst considering the impacts of mountain biking on other users of the track and on the track itself. After advice from field staff relating to soil absorption of grey water, Board members did not support a shower block, but a small shelter may be acceptable.

TUATAPERE FIELD TRIP (3 February 2014)

Allan Munn facilitated a field trip to the South Coast Viaducts where members examined the state of the Percy Burn and Sand Hill viaducts. Members walked to Port Craig and visited the historic remnants of the saw milling settlement, then were flown back to Rarakau car park. The Board members travelled to the mouth of the Waiau River to view the restoration work being undertaken by the Waiau Fisheries Habitat and Enhancement Trust. In the evening members met with members of the South Coast Viaducts Trust and Tuatapere Hump Track Ltd.

Board members agreed that it is important that all four viaducts are preserved if possible for their historic significance.

5.3 COMMUNITY INVOLVEMENT IN BOARD MEETINGS

Throughout 2013/14, the Board welcomed presentations at its meetings and field trips from a number of different organisations and individuals.

A presentation from Gareth Morgan on his Million Dollar Mouse and Predator Free Rakiura projects was well received by the Board at the July 2013 meeting and the Board wished both projects well.

Ray Phillips of the Stewart Island Rakiura Pest Liaison Committee attended the August meeting.

Professor Gary Wilson from Otago University gave a Powerpoint presentation to the Board in October on possible future research at the Subantarctic Islands and thought the Auckland Islands were ideally suited for this work.

Deep Cove Outdoor Education Trust spokesman Paul Gay also addressed the October meeting with concerns over accommodation authorisations at Deep Cove.

Henrietta McNeill from the Southland District Council spoke to the Board on the Open Spaces Policy that was being developed.

The Board heard formal presentations from Community Conservation Groups in December when five members representing eleven community groups shared their ideas and difficulties encountered when seeking funding and support. The groups were Heritage South, Southland Community Nursery, Southland Ecological Restoration Network, Yellow-eyed Penguin Trust (Te Rere), Education Centre at the Southland Community Nursery, Otatara Landcare Group, Bluff Hill/Motupohue Charitable Trust, Southland Branch of Forest & Bird Society, Invercargill Environment Centre, Awarua Radio Trust and the Southland Tramping Club.

Presentations from the Southland Rural Fire Authority team of Sally Chesterfield and Heather Wakelin were followed by questions to the Board members to identify areas of special significance for fire risk for tactical planning by the fire authority. Roy Sloan from the Fiordland Wapiti Foundation also gave a presentation on the philosophy and work of the group at the February 2014 Board meeting held at Tuatapere.

The Board's agenda and minutes (once confirmed) are sent to groups and individuals on request, and are posted on the Department of Conservation's website:

<http://www.doc.govt.nz/getting-involved/nz-conservation-authority-and-boards/conservation-boards-by-region/southland/>

Currently nine people or groups receive the Board's confirmed minutes.

6 Southland *Murihiku* Conservation Management Strategy (CMS)

Throughout 2013/14, the Board has continued to be involved in the drafting of the new Southland Murihiku CMS incorporating the Subantarctic Islands. The whole Board has been involved in providing feedback on this important document with John Whitehead coordinating the Board's feedback.

Six Board members attended various public submission hearings which took place at Invercargill, Te Anau, Queenstown, Dunedin and Christchurch. One of the Hearings was held at the Murihiku marae to address the submissions from Ngāi Tahu. Members put in many hours of reading prior to the Hearings and at the eight days of Hearings. Since then there has been a long delay as the Department planners consider the submissions and the Board is hopeful of getting the CMS draft in July 2014 to begin the task of reviewing the document. The process has taken three years to date and is proving to be cumbersome to deal with.

7 Implementation Issues

One of the Board's key roles, as set out in the Conservation Act, is overseeing the implementation of national park management plans and CMSs. Over the past year the Board has provided advice to the Department on implementation issues for both the Fiordland National Park Management Plan, the Mainland Southland West Otago CMS and the Stewart Island/Rakiura CMS and Rakiura National Park Management Plan. The Board now has in place a system of feedback from the Department on outcomes of advice given. Relationships with Department staff receiving the advice is rebuilding after the restructure and subsequent change in staff and roles, and is generally open and positive.

The Board is aware of change in focus of the Department with the new Partnership model working with businesses and the community while the Board needs to ensure that the Department adheres to the Conservation Act while pursuing its new Partnership focus.

FIORDLAND NATIONAL PARK MANAGEMENT PLAN

Over the last few years the Department and the community have come to the Board with a number of issues relating to implementation of the Fiordland National Park Management Plan (FNPMP). This year the Board has considered a number of matters relating to mountain biking opportunities and boundary changes. The Board is also awaiting the outcomes on a number of concessions from 2012/2013.

Milford Dart Tunnel

The Board provided advice to the Department on a concession application for the Milford Dart tunnel during the 2011/12 year. The Hon Dr Nick Smith announced his decision to decline Milford Dart Ltd's application for a tunnel in July 2013 using grounds that were consistent with the Board's submission.

South West Cameron Remote Area - Gazettal of Wilderness Area

At its October meeting, the Board asked the Department to proceed with consultation on the appropriateness of the South West Cameron Wilderness Area after the public consultation process for the Southland CMS. The Board agreed that the process for the Southern Wilderness Area on Stewart Island/Rakiura should be undertaken simultaneously. There has been no progress on this to date.

Mountain Biking in Fiordland National Park (FNP)

The Board has continued to give consideration to a request from the Te Anau community to allow mountain biking in FNP. Members have attended meetings of interested parties but, to date, no firm proposals have been submitted. Mountain biking in the national park would require a plan change.

Proposed additions to Fiordland National Park

The Board supported a proposal to land additions to Fiordland National Park in the Cromarty and Monowai areas. There has been no further progress on this.

STEWART ISLAND/RAKIURA CMS AND RAKIURA NATIONAL PARK MANAGEMENT PLAN

There have been a number of issues before the Board, including alternative energy sources for Stewart Island/Rakiura, seafood farming and Gareth Morgan's proposed predator-free Rakiura. While the Board is not directly represented on the governance body, it is taking an active interest in the future of this initiative with two Board members, Gail Thompson and Stewart Bull involved, representing other groups. The Board support supports this vision for the island.

MAINLAND SOUTHLAND/WEST OTAGO CMS

Riverstone Holdings Ltd

Advice was provided by the Board in 2012 to the Department on a concession application for a monorail (Riverstone Holdings Ltd/Fiordland Link Experience) through the Snowdon Forest conservation area. The Board was pleased to receive the Minister of Conservation's decision in May 2014; the decision was that he declined the application.

Ramsar Status for Te Anau Basin Wetlands

The Board supported the Department as it looked to put together an application for international recognition for these important wetland systems. There has been no progress on this application yet.

The Waiiau Restoration Trust continues its very valuable work protecting and enhancing this habitat for aquatic life and their efforts and success are very encouraging.

Southern Wilderness Area

In 2012/13 the Board asked the Department to proceed with consultation on the appropriateness of the Southern Wilderness Area on Stewart Island/Rakiura to coincide with consultation on the South West Cameron Wilderness Area in Fiordland National Park. No progress has been made.

Stewardship Lands

The Board has been concerned at the lack of progress in any land reclassifications. There are a number of significant high value conservation areas in the region that remain at risk while classed as stewardship land. Particularly notable are the Takitimu Mountains, the Mavora area and Snowdon Forest.

SUBANTARCTIC CMS

Subantarctic Marine Reserves were formally established in March 2014 – the Board played an active role in the Subantarctic Marine Protection Forum which made the recommendations to the Ministers of Conservation and Fisheries. The Board was supportive of full protection around each of the island groups which did not happen (with the exception of the Antipodes Islands), but took the pragmatic view that some protection for the Bounties and Campbell Islands was better than no protection.

There are a number of other projects being investigated for these unique islands, including mouse eradication and a research station.

CONSERVATION ADVOCACY

Under Section 6N of the Conservation Act, the Southland Conservation Board may advocate its interests at any public forum or in any statutory planning process. During the 2013/14 year the Southland Conservation Board has made the following submissions or attending meetings on resource consent applications:

- Environment Southland Proposed Southland Regional Policy Statement
- Southland District Council Plan – Heritage and Surface water
- Southland District Council wastewater discharge (Te Anau)
- Burtscher and Johnston, mooring at Deepwater Basin
- Southland District Council re South Coast Viaducts Trust
- Shark Cage Diving
- Doubtful Sound rope mooring
- Deep Cove Outdoor Education Trust
- Southland District Council Plan
- Island Escape Cruises
- Suelen Properties

Over the past year, the Board has written to various bodies pursuing conservation issues and supporting other conservation groups.

8 Subcommittees

The Board has one main subcommittee to provide advice to the Department on concession and mining access applications. Other ad hoc subcommittees are formed to respond to specific issues. For a full list of subcommittees and their membership see Appendix 2.

CONCESSIONS SUBCOMMITTEE

The Concessions Subcommittee has been very active in providing advice to the Department. A set of triggers exists which the Department uses to determine which concession applications should come to the Board for advice. The Board reviewed these triggers during the 2012/2013 year and no changes were made. During the 2013/14 year, the Board has provided advice on seven concession applications.

- Te Anau Cycling Inc.
- Real Journeys (one off) to South Arm, Lake Te Anau
- Guided Walks New Zealand Ltd
- Venture Southland, Rakiura renewable energy: vee notch weir site
- Venture Southland, Rakiura renewable energy: wind measuring mast site
- Real Journeys, commercial storage building, Milford Sound
- GNS, telecommunications mast at Wednesday Peak

The Board should receive a progress report on all outstanding concession applications at each meeting. This is not always happening.

The concession subcommittee also reviews mining access applications. During 2013/14, advice was provided on one mining access application.

- R M Cotton – mining exploration, Nokomai Valley

The Board has a good working relationship with Department staff with regard to both concession and mining access applications.

WHENUA HOU COMMITTEE

The Whenua Hou Committee is a subcommittee of the Southland Conservation Board, established under the Ngāi Tahu Claims Settlement Act 1998 as part of a joint approach to manage the island. It consists of one representative from each of the four Murihiku Papatipu Rūnaka and four members of the Southland Conservation Board. In 2013/2014, three meetings were held in November, January and March. The minutes of the Whenua Hou Committee are circulated to all Board members.

9 Liaison

9.1 NEW ZEALAND CONSERVATION AUTHORITY

The Board received minutes and agendas from NZCA meetings. The Board's new liaison person is Jan Riddell.

9.2 OTHER CONSERVATION BOARDS

Helen McPhail is the Board's liaison representative with Otago and has attended several of their meetings. The Boards share agendas and minutes. Board Support Officers are also in regular contact. Over the course of the year Board Chair, Viv Shaw, has had informal contact with the Chairs of the Otago and Canterbury Aoraki Conservation Boards.

9.3 IWI LIAISON

The Deed of Settlement between the Crown and Te Runanga o Ngāi Tahu and the Ngāi Tahu Claims Settlement Act 1998 require a number of decision makers, including Conservation Boards within the Ngāi Tahu takiwā to consult with and to have particular regard to the views of Te Runanga o Ngāi Tahu.

Gail Thompson and Stewart Bull are Ngai Tahu's representatives on the Board (appointed on the nomination of Te Runanga O Ngai Tahu as established by Section 6 of Te Runanga O Ngai Tahu Act 1996), and are also members of Kaitiaki Roopu. This group of six iwi representatives from the four rūnaka in Southland was established by the Department of Conservation to give effect to the principles of the Treaty of Waitangi and the Ngāi Tahu Claims Settlement Act. The Department consults with this group on a regular basis. The Board maintains good relationships with iwi through the Whenua Hou Committee.

9.4 FISH AND GAME COUNCIL

The Southland Conservation Board continues to liaise with the Southland Fish and Game Council on both a formal and informal basis.

9.5 LIAISON WITH OTHER ORGANISATIONS

John Whitehead represents the Board on the Waiau Working Party, keeping members informed on issues relating to eels and river flows. John Twidle is the Board's representative on the Leslie Hutchins Conservation Foundation.

Members of the Board also have strong links with a number of community groups in Southland and are active participants in a range of conservation activities. For a full list of Board members' conservation activities in the community see Appendix 4.

9.6 MEDIA

Reporters from the Southland Times regularly attended Southland Conservation Board meetings throughout the year and a number of items have appeared in newspapers following the meetings.

10. Appendices

Appendix 1: Attendance at Formal Board Meetings and Field Trips

Name	Home Town	Meetings Attended	Field Trips Attended
Viv Shaw	Te Anau	6 out of 6 *	3 out of 3
Robin McNeill	Invercargill	6 out of 6 *	3 out of 3
Helen McPhail	Queenstown	7 out of 7	3 out of 3
Gail Thompson	Bluff	5 out of 7	1 out of 3
Paul Duffy	Seaward Downs	3 out of 5 **	1 out of 3
Fiona Black	Te Anau	7 out of 7	3 out of 3
Peter Ridsdale	Invercargill	6 out of 7	3 out of 3
John Whitehead	Te Anau	7 out of 7	3 out of 3
Karyn Owen	Invercargill	5 out of 6 *	3 out of 3
Stewart Bull	Riverton	5 out of 7	3 out of 3
Andrew Bowmar	Gore	1 out of 1 ***	
Lloyd Esler	Invercargill	1 out of 1 ***	-
Peter Jones	Gore	1 out of 1 ***	-

* Term ended 30 April 2014

** Resigned 31 March 2014

*** Term began 1 May 2014

Appendix 2: Subcommittees of the Southland Conservation Board

Concessions

Karyn Owen (Chair until 4 July 2013)
Helen McPhail (Chair from 4 July 2013)
John Whitehead
Fiona Black
Peter Ridsdale
Viv Shaw (ex officio)

Whenua Hou Committee

Name:

Tane Davis (Chairman)
Rodney (Hom) Ryan
Cyril Gilroy
Estelle Leask
Fiona Black
Stewart Bull
Helen McPhail
Viv Shaw

Representing:

Te Runanga o Oraka-Aparima
Hokonui Runanga
Waihopai Runaka
Te Runanga o Awarua
Southland Conservation Board
Southland Conservation Board
Southland Conservation Board
Southland Conservation Board

Appendix 3: Board Members' Conservation Activities in the Community

Organisation/Activity	Board Member
Fiordland Conservation Trust	Viv Shaw
Pomona Island Charitable Trust	Viv Shaw John Whitehead
Waiau Working Party (Board rep.)	John Whitehead
Waiau Wildlife & Fisheries habitat Enhancement Trust	John Whitehead
Walking Access Commission Mapping Advisory Group	Robin McNeill
Federated Mountain Clubs of New Zealand	Robin McNeill
Te Araroa Southland Trust	Robin McNeill
South Catlins Development and Environmental Trust	Paul Duffy
Dog Island Trust	Peter Ridsdale
Leslie Hutchins Conservation Foundation (Board rep.)	Peter Ridsdale
South West Endangered Species Charitable Trust	Stewart Bull
Rakiura Titi Komitee	Stewart Bull
Rakiura Titi Islands Administering Body	Stewart Bull
Fiordland Marine Guardians	Stewart Bull
Fiordland Marine Guardians Management Group	Stewart Bull
Pest-free Rakiura Governance Group	Stewart Bull
Pest-free Rakiura Governance Group	Gail Thompson
The South East Marine Protection Planning Forum	Gail Thompson
Wakatipu Wilding Conifer Control Group	Helen McPhail
Wakatipu Reforestation Trust	Helen McPhail