

**Southland Conservation
Board
Te Roopu Atawhai o
Murihiku**



Annual Report

To the New Zealand Conservation
Authority

1 July 2010 - 30 June 2011

Southland Conservation Board

Annual Report

1 July 2010 - 30 June 2011

Presented to the New Zealand
Conservation Authority Pursuant
to Section 6(0) of the
Conservation Act 1987

Serviced by the Department of Conservation
Southland Conservancy
PO Box 743
33 Don Street
Invercargill 9840

FRONT COVER: *(left to right)* Stewart Bull, Viv Shaw, Paul Duffy,
Helen McPhail, Rudi Verplancke (rear), Ian Wilson, Peter Ridsdale
(rear), Gloria Harris (Board Support), Robin McNeill (Chair), John
Whitehead, Fiona Black (obscured), and Gail Thompson

(Photo supplied by Gloria Harris)

ISBN 1172-9198 (*hard copy*)
ISBN 1179-4224 (*on line*)

CONTENTS

1.	CHAIRMAN'S REPORT	7
2.	INTRODUCTION	10
3.	THE BOARD'S AREA	7
4.	BOARD MEMBERSHIP	9
5.	BOARD MEETINGS AND FIELD TRIPS	10
5.1	BOARD MEETINGS	10
5.2	FIELD TRIPS	10
5.3	PUBLIC INVOLVEMENT IN BOARD MEETINGS	11
6.	STEWART ISLAND/RAIKIURA CONSERVATION MANAGEMENT STRATEGY AND RAKIURA NATIONAL PARK MANAGEMENT PLAN	12
7.	IMPLEMENTATION OF THE FIORDLAND NATIONAL PARK MANAGEMENT PLAN	12
8.	MAINLAND SOUTHLAND WEST OTAGO SUBANTARCTICS CMS	12
9.	CONSERVATION ADVOCACY	13
8.1	SUBCOMMITTEES	13
10.	LIAISON	23
10.1	NEW ZEALAND CONSERVATION AUTHORITY	23
10.2	OTHER CONSERVATION BOARDS	23
10.3	IWI LIAISON	23
10.4	FISH AND GAME COUNCIL	16
10.5	LIAISON WITH OTHER ORGANISATIONS	16
10.6	MEDIA	24
11.	APPENDIX	17
	APPENDIX 1: ATTENDANCE AT BOARD MEETINGS AND FIELD TRIPS	17

APPENDIX 2: SUBCOMMITTEES OF THE SOUTHLAND CONSERVATION BOARD.....18
APPENDIX 3: BOARD MEMBERS CONSERVATION ACTIVITIES IN THE COMMUNITY....

1. CHAIRMAN'S REPORT

Conservation in New Zealand, to quote a previous Conservator, is a case of winning the battles and losing the war. This year has been no different. Motivated, energetic departmental staff have done their utmost to restore our biodiversity and improve infrastructure in our public conservation lands, but they have achieved little more than to drag the war out. This is certainly not to dismiss their efforts, for they are valuable in that the longer we can hold out until reinforcements arrive, the better; we can only hope that realigning the Department's focus to engage the wider public is successful. It is imperative that Conservation becomes considered to be as mainstream and important as Health and Education and so attract the funding it both deserves and requires.

This year has not been without its challenges. The proposal to investigate removing land from Schedule 4 of the Crown Minerals Act was unexpected and, as far as the Board was concerned, misguided. While there may well be land administered by the Department that has no ecological value - a farmed, landlocked esplanade strip in the Maitua Valley for example - the Board could not find any merit in mining our gazetted special places.

The Board has taken a strong line on aerial 1080 applications that are beneficial to conservation. Our support of the Department's aerial 1080 application in the Waitutu Forest has been strong and unwavering. Wider public education to rebut ill-informed anti-1080 objectors is required and the Authority may like to consider how it may be able to assist the wider conservation effort in this light.

The Board has been very involved with the Rakiura National Park Plan and CMS development. Both the Department and the Board see that the Board can act as a useful conduit into and from our communities. Furthermore, the composition of our Board means that there is no shortage of insight and useful opinion to contribute to planning documents, and it says a lot for the professionalism and the trust of the Departmental planners that they are prepared to give weight to the Board members' opinions. The collegial relations between

Board members and the Department has, I believe, made the draft Rakiura National Park Plan and CMS much better than could have otherwise been achieved.

Since the beginning of this year, the Board has taken special interest in our waterways and wetlands. At our first briefing, we were shocked to discover that the Ramsar recognised Waituna Lagoon is highly likely to irreversibly 'flip' and become anaerobic. This is a tragedy that should never have been allowed to develop and highlights a number of shortcomings in the way we administer our lands. It is still far from clear what the future holds for Waituna, and indeed all our other wetlands and waterways. We shall certainly explore how the new CMS can improve the situation.

At the beginning of the year, we welcomed the Authority to our *rohe*; these visits are of immense value and we hope that it will not be too long before we are able to host the Authority again. In the meantime, the Authority's liaison, Dr Kay Booth, has worked hard to stay informed of our efforts, which has been much appreciated.

I need to acknowledge the hard work and energy that Board members, and in particular Dr Viv Shaw and Roger McNaughton, have contributed over the last year towards conservation. Russell Ibbotson and Ian Buick left the Board this year after, respectively, eight and five year's service. Their contributions and good humour will be missed.

I also need to warmly recognise all the Southland Department staff we have directly and indirectly worked with, and we cherish the relationship we enjoy with them. It would be remiss of me to overlook the planning and organisation that our support person, Gloria Harris, provides. The conservation war continues and it is good to know that we are fighting it alongside good friends and comrades.



Chairman
Southland Conservation Board

2. INTRODUCTION

The Southland Conservation Board is one of the thirteen statutory bodies appointed by the Minister of Conservation under Section 6L of the Conservation Act 1987.

The functions and powers of the Board as outlined in Sections 6M and 6N of the Act are as follows:

- To review, amend and recommend the approval of Conservation Management Strategies
- To review and approve Conservation Management Plans
- To provide advice on the implementation of Conservation Management Strategies and Plans
- To advise on proposed changes to the status of land areas of national or international significance
- To advise on proposals for new walkways
- To liaise with Fish and Game Councils on conservation matters
- To carry out other powers and functions as delegated to the Board by the Minister of Conservation under the Conservation Act or any other Act
- To advocate its interests at any public forum or in any statutory planning process and to be heard on matters relating to the Board's functions.

Under the National Parks Act 1996, the Board also has a number of functions as follows:

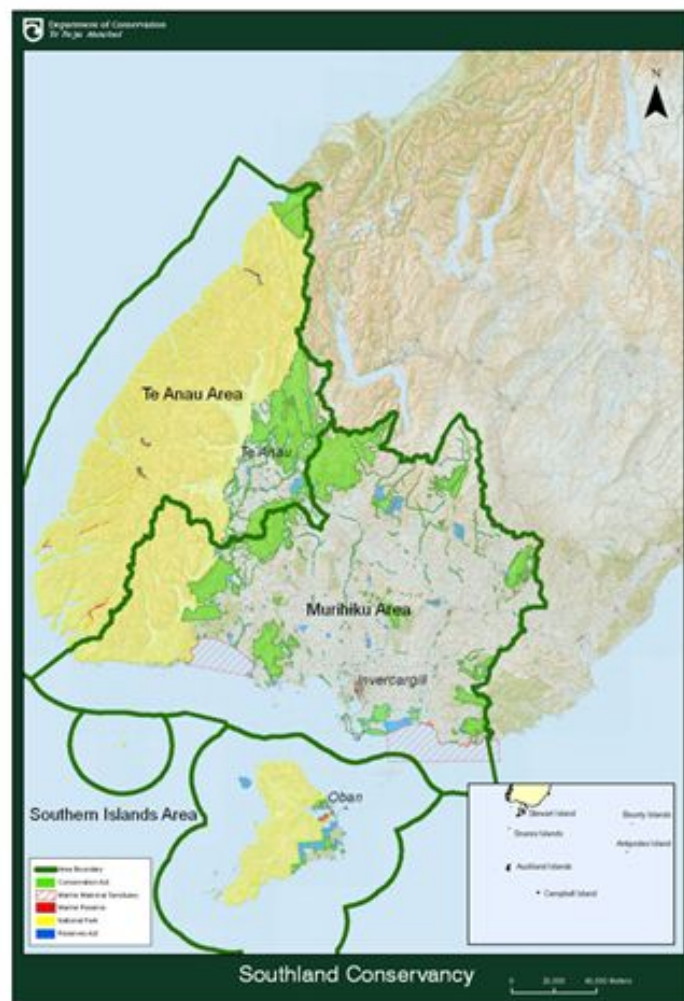
- To review, amend and recommend National Park Management Plans
- To consider and determine priorities for the implementation of Management Plans for national parks
- To make recommendations to the Minister for the appointment of honorary rangers
- To review and report on the effective administration of the general policies for national parks
- To give advice on the interpretation of any National Park Management Plan, on the addition of land to a national park or the establishment of a new national park
- To give advice on any other matter relating to any national park within the Board's jurisdiction.

These functions and powers, where exercised, are noted within this annual report. The report covers the period 1 July 2010 to 30 June 2011.

3. THE BOARD'S AREA

The Southland Conservation Board has the largest area of jurisdiction of all Conservation Boards in New Zealand. Over half of the land within the province of Southland is managed on behalf of all New Zealanders by the Department of Conservation. The Southland Conservancy is vast, encompassing a total of 1.9 million hectares of land that is administered by the Department and 574,286 hectares of marine reserve (of which the Auckland Islands Marine Reserve makes up 562,812 hectares).

Two significant areas of land within the Board's jurisdiction have World Heritage status - the Subantarctic Islands and Fiordland National Park. Another area is an internationally recognised Ramsar wetlands site - Awarua Wetlands.



World Heritage Areas

Isolated, windswept, beautiful and fragile, New Zealand's Subantarctic islands are unique and irreplaceable. Described by the United Nations Environment Program as "the most diverse and extensive of all Subantarctic archipelagos", all five island groups: the Bounty Islands, the Antipodes Islands, the Snares Islands, the Auckland Islands and Campbell Island were honoured with World Heritage status in 1998. They are also National Nature Reserves under New Zealand's Reserves Act 1977. New Zealand's Subantarctic Islands are located in the Southern Ocean south to south-east of New Zealand. Spanning six degrees of latitude, from 47 to 52 degrees south, the five island groups occupy the stormy latitudes of the Roaring Forties and Furious Fifties, known also as the Albatross Latitudes. The islands contain a high degree of endemism and are home to a number of rare species of birds, plants, marine mammals and invertebrates. The New Zealand Subantarctic region supports the most diverse community of breeding seabirds in the southern ocean. Their isolation presents a number of challenges, and a separate Conservation Management Strategy outlines the way in which the islands should be managed.

The Fiordland National Park, established in 1952, is the largest national park in New Zealand (1,260,200 hectares). At the heart of Te Wāhipounamu/South West New Zealand World Heritage Area, Fiordland National Park includes some of New Zealand's most recognised and special places including Milford Sound/Piopirotahi. It has high cultural, historical and biodiversity significance and offers a wide range of visitor opportunities, from scenic viewing points to intense wilderness experiences. The Fiordland National Park Management Plan sets out how the Park should be managed.

Ramsar Sites

Southland was the first place in New Zealand to have a wetland officially recognised under the Ramsar Convention (Convention on Wetlands of International Importance) when 3500 ha of the Waituna Wetland Scientific Reserve was registered in 1976. A further 15,400 ha was added in 2008 which included the three major estuaries; Toi Toi, Awarua Bay and the New River. These three estuaries are a unique feature of Southland and are still relatively unspoiled compared to similar waterways in other parts of the country. Alarmingly, Waituna has now gained further national attention as being at risk of 'flipping'

(becoming irreversibly aneorobic) and this is a cause of great consternation to the Board.

National Parks

There are two National Parks within the Board's jurisdiction - Fiordland National Park and Rakiura National Park. Opened in 2002, Rakiura is New Zealand's newest National Park. It encompasses 139,000 hectares of land, and comprises 85% of New Zealand's third main island - Stewart Island/Rakiura. The Park extends from the northwest of the island to South Cape, and includes many offshore islands in Port Pegasus/Pikihatiti and Paterson Inlet/Whaka a Te Wera. The first Rakiura National Park Management Plan has now been approved by the New Zealand Conservation Authority.

Other Conservation Land in Southland

In addition to the National Parks, World Heritage Areas and Ramsar wetlands, the Board's area of jurisdiction includes large forested, mountainous areas on the mainland such as the Takitimu, Eyre, and Blue Mountains; diverse coastlines, important estuaries and wetlands areas such as Curio Bay. On Stewart Island/Rakiura, the Board's area of jurisdiction covers conservation lands outside of the Rakiura National Park. This includes Codfish Island/Whenua Hou, home to the critically endangered Kākapo, which is managed as a Nature Reserve and for which the Board provides management advice through membership of the Whenua Hou Committee.

The Southland Conservation Board has a responsibility to the people of Southland and the wider New Zealand population to ensure that conservation lands within its jurisdiction and the biodiversity they contain are protected and enhanced.

4. BOARD MEMBERSHIP

The following table lists the membership of the Southland Conservation Board between 1 July 2010 and 30 June 2011 and their term of office.

Name	Area	Date first appointed	Term ends/ended	Years served

Ian Buick	Te Anau	01/09/20 05	31/08/20 10	5
Stewart Bull*	Riverton/Apar ima	04/06/20 09	30/06/20 13	2
Paul Duffy	Seaward Downs	01/09/20 07	30/06/20 13	4
Russell Ibbotson	Queenstown	13/10/20 02	31/08/20 10	8
Robin McNeill	Invercargill	01/09/20 03	30/06/20 12	8
Helen McPhail	Gore	31/08/20 08	31/08/20 11	3
Viv Shaw	Te Anau	01/09/20 07	30/06/20 13	4
Gail Thompson*	Bluff/ Awarua	16/10/20 06	30/06/20 12	5
Ian Wilson	Stewart Island/ Rakiura	01/09/20 05	31/08/20 11	6
Fiona Black	Te Anau	23/12/20 10	31/08/20 11	6mths
John Whitehead	Te Anau	23/12/20 10	30/06/20 13	6mths
Peter Ridsdale	Invercargill	23/12/20 10	31/08/20 11	6mths
Rudi Verplancke	Seaward Downs	23/12/20 10	30/06/20 13	6mths
Roger McNaughton	Invercargill	15/04/20 10	31/08/20 10	Co- opted

(*Ngai Tahu Representative)

Ian Buick resigned from the Board from 31 August 2010, due to relocating to Christchurch. The Board was most appreciative of being able to co-opt past Chair and Board member Roger McNaughton for the period April - August 2010, following Muriel Johnston's resignation due to ill health.

Viv Shaw was Chair of the Board for the period 1 July 2010 to 11 February 2011. Robin McNeill was elected to chair the Board in February 2011.

5. BOARD MEETINGS AND FIELD TRIPS

During the 2010/11 financial year the Board held six full day meetings. For each formal meeting Board members receive \$140 per day, and the Chair receives \$190 per day. Individual Board members participation in Board meetings and field trips is noted in Appendix 1.

5.1 BOARD MEETINGS

Meeting dates and locations

Date	Location
19 August 2010	Invercargill
14 October 2010	Invercargill
2 December 2010	Invercargill
11 February 2011	Owaka, Catlins
14 April 2011	Invercargill
16 June 2011	Tuatapere

5.2 FIELD TRIPS

During the past year the Board undertook two field trips. Field trips provide the Board with the opportunity for members to become more familiar with conservation issues, to discuss management and implementation issues with the appropriate staff from the Department of Conservation, and to identify issues of relevance to future Conservation Management Strategies and National Park Management Plans. The field trips are also an excellent opportunity for the Board to develop good relationships between individual members and key staff from the Department.

CATLINS - 10 February 2011

The Board were joined by the New Zealand Conservation Authority for a field trip from Invercargill to Owaka, exploring the Catlins coast. The field trip left Invercargill, bound for Fortrose (*RAMSAR wetlands and whitebaiting issues*), then on to the upgraded Waipapa Point Recreation Reserve and historic Waipapa Point lighthouse (*heritage*). From there, the group moved on to Waipohatu (*community relations*), then enjoyed a light lunch with the

South Catlins Environment and Heritage Trust at Curio Bay, during which the Trust informed them of their plans to upgrade the Recreation Reserve. The group then walked down to explore the Curio Bay Petrified Forest and campsite area before leaving for Woodstock Lodge at Owaka, where they spent the night. The Board held its meeting the following day, and NZCA members left for Dunedin airport, where they held the conclusion of their meeting before flying home.

TUATAPERE - 16 June 2011

The Board held its June meeting at the Waiiau Hotel in Tuatapere, and were joined by Iris Scott and Gordon Bailey of the Otago Conservation Board. The next day, Iris accompanied the Board on a field trip on the way back to Invercargill. Department staff met up with the Board at Longhilly, which is part of the Te Araroa Trail, for an informative talk by Lloyd Blakey and Kevin Hawkes of the Te Araroa Southland Trust. Whilst there, the Board were guided along part of the trail which encompasses the historic Ports Water Race that sidles the Longwood Range. From there, they drove to Round Hill Road where they viewed an area currently being mined for gold before departing for a brief stop at Lake George. A picnic lunch was enjoyed at the Takutai o te Titi Marae at Colac Bay, after which the group progressed to Cascade Road, then home to Invercargill.

5.3 PUBLIC INVOLVEMENT IN BOARD MEETINGS

Over the last year the Board has engaged significantly with the local and wider community with regard to the development of the Stewart Island/Rakiura CMS and Rakiura NPMP (see Section 6), which was formally approved by the NZCA at the Authority's 11 February meeting. The Board are currently heavily involved with progressing the Mainland Southland West Otago Subantarctics CMS review.

During 2010/11 the Board welcomed presentations at its meetings from a number of organisations including Fiordland Tramping and Outdoor Recreation Club, Environment Southland, Walking Access New Zealand, and Milford Sound Development Authority. The Board also joined with Kaitiaki Roopu for part

of their meeting on 2 December, along with a shared lunch.

Members of the public attended meetings held in Invercargill, Colac Bay and Tuatapere. Members of the Board also bring to the Board concerns that have been raised with them by members of the community.

The Board's agenda and minutes (once confirmed) are sent to groups and individuals on request, and are posted on the Department of Conservation's website:

<http://www.doc.govt.nz/getting-involved/nz-conservation-authority-and-boards/conservation-boards-by-region/southland/>

Currently 17 people or groups receive the Board's confirmed minutes.

6. STEWART ISLAND/RAKIURA CONSERVATION MANAGEMENT STRATEGY AND RAKIURA NATIONAL PARK MANAGEMENT PLAN

Throughout 2009/10 the Board focussed considerable effort on the review of the Stewart Island/Rakiura CMS, and the development of the first management plan for the Rakiura National Park. The planning process for both documents was run side by side, with the result that the community was consulted once for both documents. This is the first time within New Zealand that a joint Conservation Management Strategy (CMS) and National Park Management Plan (NPMP) process has been run simultaneously.

At the Board's 11 February meeting in the Catlins, the NZCA formally advised the Board that the Rakiura CMS and NPMP had been approved, and acknowledged the work the Board and others had put into it.

The enviable strength of the CMS and Plan arises from the adoption of "place based planning", which benefitted from very considerable public input at an early stage and through the public consultation process.

7. IMPLEMENTATION OF THE FIORDLAND NATIONAL PARK MANAGEMENT PLAN

During the past year the Board has also focussed its attention on the implementation of the Fiordland National Park Management Plan. The plan has been operational since June 2007 and a number of implementation issues have been brought to the Board's attention by the Department of Conservation. Air access to Milford Sound is an ongoing concern to the Board.

8. MAINLAND SOUTHLAND WEST OTAGO SUBANTARCTICS CMS

After the Stewart Island/Rakiura NPMP and CMS was approved, the Board again became part of the process in March with the start of the Mainland Southland West Otago Subantarctics CMS. The Board has again been actively involved in the pre-consultation process and the subcommittee joins regular Departmental officials' meetings to expedite progress.

9. CONSERVATION ADVOCACY

Under Section 6N of the Conservation Act, the Southland Conservation Board may advocate its interests at any public forum or in any statutory planning process. During the 2010/11 year the Southland Conservation Board has made the following submissions on resource consent applications;

- Rat eradication on Ulva Island
- Deep Cove Moorings
- Cleddau Flood Protection

In addition the Board has made submissions on a number of plans/discussion documents;

- Proposed National Policy Statement on Indigenous Biodiversity
- Proposed Regional Coastal Plan: Kermadec and Subantarctic Islands

The Board also wrote letters to Ministers on the following conservation issues:

- Review of Shared Services
- Waituna Lagoon
- Waitutu Forest
- Delay in Appointments to Conservation Board
- Game Animal Council Report

8.1 SUBCOMMITTEES

Throughout the year the Board has formed a number of subcommittees. These have ranged from subcommittees to assist the Department with the development of the Stewart Island/Rakiura CMS and the Rakiura NPMP (see Section 6), to ad hoc subcommittees responsible for making submissions on specific issues. For a full

list of subcommittees and their membership see Appendix 2.

RAKIURA SUBCOMMITTEE

The Rakiura Subcommittee has been very active over the past year, working with the Department to develop the Stewart Island/Rakiura CMS and the Rakiura NPMP, which were both approved by the NZCA at the Board's meeting in February.

MAINLAND SOUTHLAND/WEST OTAGO CMS SUBCOMMITTEE

The Board has been involved in the Mainland Southland/West Otago CMS process, with members of the subcommittee participating in the CMS Working Party's fortnightly meetings.

SUBANTARCTIC SUBCOMMITTEE

The Department asked the Board for its advice on the Subantarctics Regional Coastal Plan, which was the first such plan for the islands. Through the Subantarctics Committee, the Board provided extensive feedback to the Department.

MILFORD AIR ACCESS SUBCOMMITTEE

The Board still awaiting the decision by the Minister on the allocation of concessions for aircraft landings at Milford Sound.

CMS SUBCOMMITTEES

The Southland Conservation Board has responsibility for more CMSs and NPMPs than any other Conservation Board. Having been heavily involved with the Department in the production of the Fiordland National Park Management Plan and the Stewart Island/Rakiura CMS, it has extensive experience with planning documents and well placed to launch into the Mainland Southland/West Otago CMS.

CONCESSIONS SUBCOMMITTEE

The Concessions Subcommittee, which was formed to deal with the Department's streamlined concession approval process, has been very active in providing advice to the Department under the leadership of Helen McPhail as chair.

WHENUA HOU COMMITTEE

The Whenua Hou Committee is a subcommittee of the Southland Conservation Board, established under the Ngāi Tahu Claims Settlement Act 1998 as part of a joint approach to manage the island. It consists of one representative from each of the four Murihiku

Papatipu Rūnaka and four members of the Southland Conservation Board. In 2010/2011, two meetings were held, with one of them taking place on Whenua Hou. There was one member change for this time frame; this consisted of Robin McNeill replacing Ian Buick, as one of the Conservation Board Representatives when Ian resigned from the Board.

10. LIAISON

10.1 NEW ZEALAND CONSERVATION AUTHORITY

The Board received minutes and agendas from NZCA meetings. The Board Chair has communicated regularly with the Board's NZCA liaison person, Kay Booth, and is grateful for the support she provides. Kay attended the Board meeting in December.

The Board had the opportunity to liaise with members of the NZCA during a joint field trip to the Catlins in February, where both groups overnighted.

10.2 OTHER CONSERVATION BOARDS

The Board had the pleasure of hosting Iris Scott and Gordon Bailey, representatives of the Otago Conservation Board (OCB), at the Board's June 2011 meeting and field trip the following day. Helen McPhail is the Board's liaison representative with OCB, and has attended several of their meetings. The Boards share agendas and minutes. Board Support Officers are also in regular contact.

10.3 IWI LIAISON

The Deed of Settlement between the Crown and Te Runanga o Ngāi Tahu and the Ngāi Tahu Claims Settlement Act 1998 require a number of decision makers, including Conservation Boards within the Ngāi Tahu takiwā to consult with and to have particular regard to the views of Te Runanga o Ngāi Tahu. Iwi Board members continue to provide valuable information and input from the wider iwi community on all conservation related issues.

Gail Thompson and Stewart Bull are Ngai Tahu's representatives on the Board (appointed on the nomination of Te Runanga O Ngai Tahu as established by Section 6 of Te Runanga O Ngai Tahu Act 1996), and are also members of Kaitiaki Roopu. This group of six iwi representatives from the four rūnaka in Southland was established by the Department of Conservation to give effect to the principles of the Treaty of Waitangi and the Ngāi Tahu Claims Settlement Act. The Department consults with this group on a regular basis. The Board has good links with Kaitiaki Roopu, and also maintains a

relationship with Kaitiaki Roopu through the Whenua Hou Committee.

10.4 FISH AND GAME COUNCIL

The Southland Conservation Board continues to liaise with the Southland Fish and Game Council on both an informal and formal basis, with Bill Jarvie attending the Board's August meeting

10.5 LIAISON WITH OTHER ORGANISATIONS

Members of the Board have strong links with a number of community groups in Southland and are active participants in a range of conservation activities. For a full list of Board members conservation activities in the community see Appendix 4.

10.6 MEDIA

Reporters from the Southland Times regularly attended Southland Conservation Board meetings throughout the year and a number of items have appeared in newspapers following the meetings.

11. APPENDIX

Appendix 1: Attendance at Board Meetings and Field Trips

Name	Home Town	Meetings Attended	Field Trips Attended
Viv Shaw	Te Anau	6 out of 6	2 out of 2
Robin McNeill (Chair)	Invercargill	5 out of 6	2 out of 2
Ian Buick	Te Anau	1 out of 1	-
Russell Ibbotson	Queenstown	1 out of 2	-
Helen McPhail	Gore	6 out of 6	2 out of 2
Ian Wilson	Stewart Island/Rakiura	5 out of 6	2 out of 2
Gail Thompson	Bluff	4 out of 6	2 out of 2
Paul Duffy	Seaward Downs	5 out of 6	2 out of 2
Stewart Bull	Riverton/Aparima	4 out of 6	1 out of 2
Fiona Black	Te Anau	3 out of 3	2 out of 2
Peter Ridsdale	Invercargill	3 out of 3	2 out of 2
Rudi Verplancke	Seaward Downs	2 out of 3	1 out of 2
John Whitehead	Te Anau	3 out of 3	2 out of 2
Co-opted member Roger McNaughton	Invercargill	2 out of 2	0 out of 1

Appendix 2:
Subcommittees of the Southland Conservation Board

Rakiura Subcommittee

Robin McNeill (Chair)
Gail Thompson
Ian Wilson
Stewart Bull
Helen McPhail
Viv Shaw (ex-officio)

Subantarctics Subcommittee

Viv Shaw (Chair)
Gail Thompson
Ian Buick
Stewart Bull

CMSs in General

Viv Shaw
Robin McNeill (Chair)

Strategic approach to CMS

Viv Shaw
Robin McNeill (Chair)
Helen McPhail
Paul Duffy

Mainland Southland/West Otago

CMS

Gail Thompson (Chair)
Paul Duffy
Helen McPhail
Robin McNeill
Viv Shaw

Milford Air Access

Viv Shaw (Chair)
Robin McNeill
Ian Buick

Concessions

Stewart Bull
Helen McPhail (Chair)
Ian Wilson
Viv Shaw

Cleddau Flood Protection

Paul Duffy
Robin McNeill (Chair)
Helen McPhail
Viv Shaw

The Whenua Hou Committee

Name:

Tane Davis (Chairman)

Rodney (Hom) Ryan
Cyril Gilroy
Suzanne Spencer
Ian Wilson

Ian Buick

Stewart Bull

Representing:

Te Runanga o Oraka-
Aparima
Hokonui Runanga
Waihopai Runaka
Te Runanga o Awarua
Southland Conservation
Board
Southland Conservation
Board
Southland Conservation

Helen McPhail

Board
Southland Conservation
Board

Appendix 3:

4 Board Members Conservation Activities in the Community

Organisation/Activity	Board Member
Te Anau Landcare Trust	Ian Buick
South West Endangered Species Charitable Trust	Ian Buick Stewart Bull
Fiordland Conservation Trust	Viv Shaw
Pomona Island Charitable Trust	Viv Shaw Stewart Bull John Whitehead (Chair)
Te Araroa Southland Trust	Robin McNeill
Stewart Island Rakiura Community Trust	Ian Wilson
South Catlins Development and Environmental Trust	Paul Duffy
Walking Access Commission Mapping Advisory Group	Robin McNeill
Department of Conservation Awards Event	Viv Shaw Robin McNeill
Waiau Working Party (SCBd rep)	John Whitehead
Waiau Wildlife & Fisheries habitat Enhancement Trust (Trustee)	John Whitehead