

Southland Conservation Board Te Roopu Atawhai o Murihiku



Annual Report

To the New Zealand Conservation Authority

1 July 2011 - 30 June 2012

Southland Conservation Board

Annual Report

1 July 2011 - 30 June 2012

**Presented to the New Zealand Conservation
Authority Pursuant to Section 6(O) of the
Conservation Act 1987**

Serviced by the Department of Conservation
Southland Conservancy
PO Box 743
33 Don Street
Invercargill 9840

FRONT COVER:

(Photo supplied by)

ISBN 1172-9198 (hard copy)
ISBN 1179-4224 (on line)

Contents

| | | |
|------------|--|-----------|
| 1 | CHAIRPERSON'S REPORT | 4 |
| 2 | INTRODUCTION..... | 6 |
| 3 | THE BOARD'S AREA | 7 |
| 4 | BOARD MEMBERSHIP | 9 |
| 5 | BOARD MEETINGS AND FIELD TRIPS | 9 |
| 5.1 | BOARD MEETINGS | 10 |
| 5.2 | FIELD TRIPS | 10 |
| 6 | COMMUNITY INVOLVEMENT IN BOARD MEETINGS..... | 11 |
| 7 | MAINLAND SOUTHLAND WEST OTAGO SUBANTARCTICS CMS.... | 11 |
| 8 | IMPLEMENTATION ISSUES | 12 |
| 8.1 | SUBCOMMITTEES | 14 |
| 8.2 | STRATEGIC PLANNING | 15 |
| 9. | LIAISON..... | 15 |
| 9.1 | NEW ZEALAND CONSERVATION AUTHORITY | 15 |
| 9.2 | OTHER CONSERVATION BOARDS | 15 |
| 9.3 | IWI LIAISON | 15 |
| 9.4 | FISH AND GAME COUNCIL | 16 |
| 9.5 | LIAISON WITH OTHER ORGANISATIONS | 16 |
| 9.6 | MEDIA | 16 |
| 10. | APPENDICES..... | 17 |
| | APPENDIX 1: ATTENDANCE AT FORMAL BOARD MEETINGS AND FIELD TRIPS | 17 |
| | APPENDIX 2: SUBCOMMITTEES OF THE SOUTHLAND CONSERVATION BOARD | 18 |
| | APPENDIX 3: BOARD MEMBERS' CONSERVATION ACTIVITIES IN THE COMMUNITY .. | 19 |

1 Chairperson's Report

Over the last year the Department of Conservation has been undergoing considerable change. This has presented both opportunities and challenges for the Board. As the Department continues its restructuring, the Board is committed to maintaining an effective relationship with the Department, the Minister of Conservation and the Southland community.

The Board adds value to conservation in Southland and New Zealand in a number of ways. It has been actively involved in the development of the new Mainland Southland West Otago Subantarctic Island Conservation Management Strategy (CMS). Board members have been encouraging as many people as possible to have their input into the plan that will determine how conservation land in Southland is managed on behalf of all New Zealanders over the coming decade and beyond. It has been challenging to meet the tight deadlines set by the Department, but, as Chair of the Board, I have been proud of the huge effort put into the CMS process this year by all Board members.

In addition to assisting the Department to develop new plans, a key role of the Board is to oversee the implementation of National Park Management Plans and Conservation Management Strategies. During the past year the Board has provided advice to the Department on a number of significant concession applications. Significant because of the scale of some of the proposed activities and significant because of the Board's view that many of the applications were inconsistent with the Department's plans. The Board has been disappointed that the Department has not heeded its advice and has, in some cases, taken the unusual step of submitting in opposition to concession applications.

Both the Fiordland National Park Management Plan and the Mainland Southland West Otago CMS were developed with extensive public consultation. As a result, the Board has a reasonable expectation that the Department will respect the wishes of the community, as expressed in these planning documents. The Board is committed to providing advice to the Department and the Minister based on the provisions in our plans.

As I write this report, the public is still awaiting a decision on the contentious tunnel and monorail concession applications. The Board is hopeful that, following further public consultation, the provisions in the relevant plans will be adhered to. The Board is particularly hopeful given the recent decision by a commissioner to decline resource consent for a cycle trail through the Eyre Mountains Conservation Area. The impact on the environment and other users of this area were considered to be too great to allow for a cycle trail. Let's hope that the Department's decision maker for the tunnel and monorail applications understands that the impacts of these two activities on conservation land and existing users are unacceptable.

The Board has made a number of submissions over the past year on issues that could have serious impacts on conservation lands within Southland. Of on-going concern to the Board is the legislation being draft to allow for the establishment of a

New Zealand Game Animal Council. The Board believes that the interests of hunters in Southland are already addressed through the provisions in the Fiordland and Rakiura National Park Plans without the need for a another statutory body.

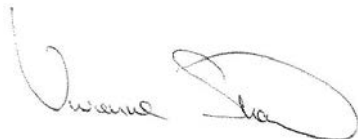
I was honoured to be re-elected to Chair the Southland Conservation Board in April 2012. I want to express my thanks to my predecessor Robin McNeill for his hard work during his tenure as Chair of the Board.

I would like to thank all Board members for their commitment to conservation in Southland in what has, at times, been quite a challenging year. In particular I would like to commend Helen McPhail and Karyn Owen for the time they have devoted to collating advice, on behalf of the Board, on concession applications. Members of the Board continue to work hard for conservation, not only through attendance at Board meetings, but also through their work on subcommittees and in many cases by being involved on other community-based, conservation-related organisations.

Finally, I would like to acknowledge the staff within the Department of Conservation with whom we have worked over the past year. We have seen a number of people change roles and others move onto new challenges outside the Department. Special thanks go Gloria Harris, our Board Support Officer, for her commitment to the Board over the last year. We wish you well as you embark on new challenges outside the Department

We look forward to having a constructive and effective relationship with the Department in the coming year.

Viv Shaw

A handwritten signature in black ink, appearing to read 'Viv Shaw', with a large, stylized flourish at the end.

Chair
Southland Conservation Board

2 Introduction

The Southland Conservation Board is one of the thirteen statutory bodies appointed by the Minister of Conservation under Section 6L of the Conservation Act 1987.

The functions and powers of the Board as outlined in Sections 6M and 6N of the Act are as follows:

- To review, amend and recommend the approval of Conservation Management Strategies
- To review and approve Conservation Management Plans
- To provide advice on the implementation of Conservation Management Strategies and Plans
- To advise on proposed changes to the status of land areas of national or international significance
- To advise on proposals for new walkways
- To liaise with Fish and Game Councils on conservation matters
- To carry out other powers and functions as delegated to the Board by the Minister of Conservation under the Conservation Act or any other Act
- To advocate its interests at any public forum or in any statutory planning process and to be heard on matters relating to the Board's functions.

Under the National Parks Act 1996, the Board also has a number of functions as follows:

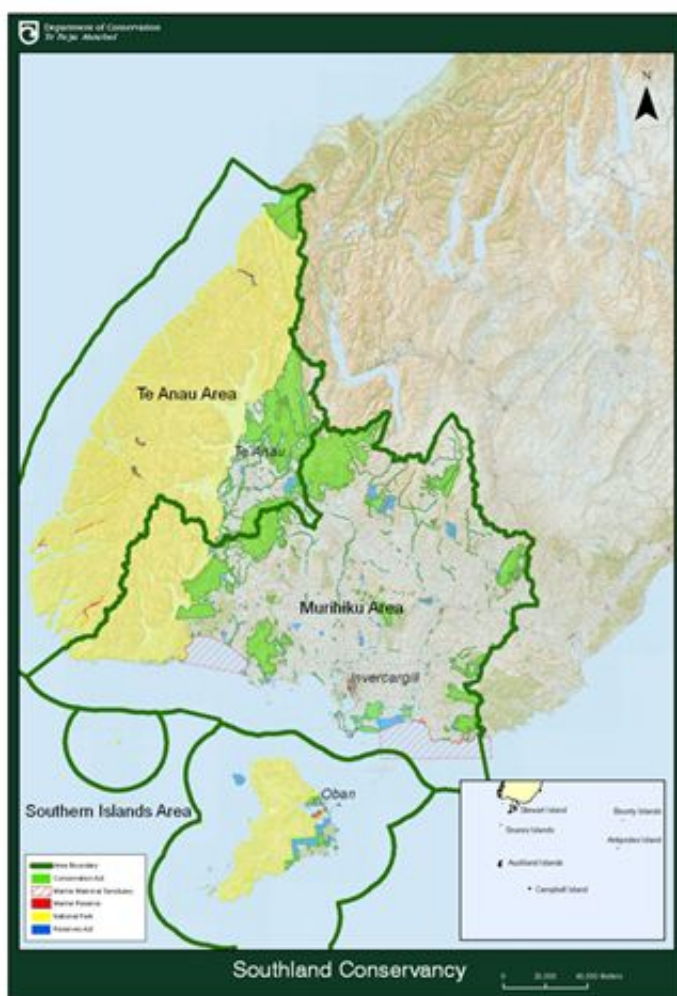
- To review, amend and recommend National Park Management Plans
- To consider and determine priorities for the implementation of Management Plans for national parks
- To make recommendations to the Minister for the appointment of honorary rangers
- To review and report on the effective administration of the general policies for national parks
- To give advice on the interpretation of any National Park Management Plan, on the addition of land to a national park or the establishment of a new national park
- To give advice on any other matter relating to any national park within the Board's jurisdiction.

These functions and powers, where exercised, are noted within this annual report. The report covers the period 1 July 2011 to 30 June 2012.

3 The Board's Area

The Southland Conservation Board has the largest area of jurisdiction of all Conservation Boards in New Zealand. Over half of the land within the province of Southland is managed on behalf of all New Zealanders by the Department of Conservation. The Southland Conservancy is vast, encompassing a total of 1.9 million hectares of land that is administered by the Department and 574,286 hectares of marine reserve (of which the Auckland Islands Marine Reserve makes up 562,812 hectares).

Two significant areas of land within the Board's jurisdiction have World Heritage status – the Subantarctic Islands and Fiordland National Park. Another area is an internationally recognised Ramsar wetlands site – Awarua Wetlands.



World Heritage Areas

Isolated, windswept, beautiful and fragile, New Zealand's Subantarctic islands are unique and irreplaceable. Described by the United Nations Environment Program as "the most diverse and extensive of all Subantarctic archipelagos", all

five island groups: the Bounty Islands, the Antipodes Islands, the Snares Islands, the Auckland Islands and Campbell Island were honoured with World Heritage status in 1998. They are also National Nature Reserves under New Zealand's Reserves Act 1977. New Zealand's Subantarctic Islands are located in the Southern Ocean south to south-east of New Zealand. Spanning six degrees of latitude, from 47 to 52 degrees south, the five island groups occupy the stormy latitudes of the Roaring Forties and Furious Fifties, known also as the Albatross Latitudes. The islands contain a high degree of endemism and are home to a number of rare species of birds, plants, marine mammals and invertebrates. The New Zealand Subantarctic region supports the most diverse community of breeding seabirds in the southern ocean. Their isolation presents a number of challenges, and a separate Conservation Management Strategy outlines the way in which the islands should be managed.

The Fiordland National Park, established in 1952, is the largest national park in New Zealand (1,260,200 hectares). At the heart of Te Wāhipounamu/South West New Zealand World Heritage Area, Fiordland National Park includes some of New Zealand's most recognised and special places including Milford Sound/Piopiotahi. It has high cultural, historical and biodiversity significance and offers a wide range of visitor opportunities, from scenic viewing points to intense wilderness experiences. The Fiordland National Park Management Plan sets out how the Park should be managed.

Ramsar Sites

Southland was the first place in New Zealand to have a wetland officially recognised under the Ramsar Convention (Convention on Wetlands of International Importance) when 3500 ha of the Waituna Wetland Scientific Reserve was registered in 1976. A further 15,400 ha was added in 2008 which included the three major estuaries; Toi Toi, Awarua Bay and the New River. These three estuaries are a unique feature of Southland and are still relatively unspoiled compared to similar waterways in other parts of the country. Alarmingly, Waituna has now gained further national attention as being at risk of 'flipping' (becoming irreversibly anoxic) and this is a cause of great consternation to the Board.

National Parks

There are two National Parks within the Board's jurisdiction – Fiordland National Park and Rakiura National Park. Opened in 2002, Rakiura is New Zealand's newest National Park. It encompasses 139,000 hectares of land, and comprises 85% of New Zealand's third main island – Stewart Island/Rakiura. The Park extends from the northwest of the island to South Cape, and includes many offshore islands in Port Pegasus/Pikihati and Paterson Inlet/Whaka a Te Wera. The first Rakiura National Park Management Plan has now been approved by the New Zealand Conservation Authority.

Other Conservation Land in Southland

In addition to the National Parks, World Heritage Areas and Ramsar wetlands, the Board's area of jurisdiction includes large forested, mountainous areas on the mainland such as the Takitimu, Eyre, and Blue Mountains; diverse coastlines,

important estuaries and wetlands areas such as Curio Bay. On Stewart Island/Rakiura, the Board's area of jurisdiction covers conservation lands outside of the Rakiura National Park. This includes Codfish Island/Whenua Hou, home to the critically endangered Kākapo, which is managed as a Nature Reserve and for which the Board provides management advice through membership of the Whenua Hou Committee.

The Southland Conservation Board has a responsibility to the people of Southland and the wider New Zealand population to ensure that conservation lands within its jurisdiction and the biodiversity they contain are protected and enhanced.

4 Board Membership

The following table lists the membership of the Southland Conservation Board between 1 July 2011 and 30 June 2012 and their term of office.

| Name | Area | Date first appointed | Term ends/ended | Years served |
|-----------------|------------------|----------------------|-----------------|--------------|
| Fiona Black | Te Anau | 23/12/2010 | 30/06/2014 | 18mths |
| Stewart Bull* | Riverton/Aparima | 04/06/2009 | 30/06/2013 | 3 |
| Paul Duffy | Seaward Downs | 01/09/2007 | 30/06/2013 | 5 |
| Robin McNeill | Invercargill | 01/09/2003 | 30/06/2013 | 9 |
| Helen McPhail | Gore | 31/08/2008 | 30/06/2014 | 4 |
| Karyn Owen | Invercargill | 19/09/2011 | 30/06/2014 | 9mths |
| Peter Ridsdale | Invercargill | 23/12/2010 | 30/06/2014 | 18mths |
| Viv Shaw | Te Anau | 01/09/2007 | 30/06/2013 | 5 |
| Gail Thompson* | Bluff/ Awarua | 16/10/2006 | 30/06/2015 | 6 |
| John Whitehead | Te Anau | 23/12/2010 | 30/06/2013 | 18mths |
| Rudi Verplancke | Seaward Downs | 23/12/2010 | 30/06/2013 | 18mths |

(*Ngai Tahu Representative)

Robin McNeill was Chair of the Board for the period 11 February 2011 to 12 April 2012. Viv Shaw was elected as Chair on 12 April 2012.

5 Board Meetings and Field Trips

During the 2011/12 financial year the Board held five formal and one informal full day meetings. For each formal meeting Board members receive \$140 per day, and the Chair receives \$190 per day. Individual Board members participation in Board meetings and field trips is noted in Appendix 1.

5.1 *BOARD MEETINGS*

Meeting dates and locations

| Date | Location |
|------------------|---------------------------------|
| 11 August 2011 | Invercargill (informal meeting) |
| 13 October 2011 | Te Anau |
| 8 December 2011 | Invercargill |
| 10 February 2012 | Waikaia |
| 12 April 2012 | Invercargill |
| 14 June 2012 | Invercargill |

5.2 *FIELD TRIPS*

During the past year the Board undertook three field trips. Field trips provide the Board with the opportunity for members to become more familiar with conservation issues, to discuss management and implementation issues with staff from the Department and members of the local community. This year's field trips were used to identify issues of relevance to future Conservation Management Strategies and National Park Management Plans.

TE ANAU FIELD TRIP (14 October 2011)

The Board's October meeting was held in Te Anau. This was followed by a field trip to visit sites of interest in the Western High Country Place and areas for which significant concession applications have been received. Board members visited the new entrance to the Kepler Track and then travelled to Mavora Lakes. Members saw, firsthand, the key conservation areas which would be impacted by the proposed monorail and the proposed Around the Mountain Cycle trail. This was followed by a visit to the Burwood Red Tussock Reserve and the Burwood Takahe Rearing Unit to see and learn about the changes implemented to the Takahe programme by the Department.

WAIKAIA FIELD TRIP (9 February 2012)

Prior to its February meeting, the Board had a field trip to a number of sites of interest in the Eastern High Country Place in the new CMS. A number of community groups and individuals shared their passion for the area with Board members. The field trip started with a visit to Whisky Gully (invasive weed issues), then Black Gully where the Board shared morning tea with West Otago Promotions. Leithen Bush was viewed where access and neighbourly issues were discussed. Local Brett Petrie addressed the Board during its lunch break at Piano Flat. Board members were then flown by helicopter to Titan Rocks and Blue Lake to get a grasp of the vastness of Glenaray Station, the Umbrella and Garvie Mountains. On the return flight to Piano Flat, the Board viewed Post Office Creek, a site for possible future gold mining operations. Back in Waikaia Board members visited the local museum.

BLUFF FIELD TRIP (13 June 2012)

The Board had a half day field trip to Bluff prior to its June meeting. Bluff, in the Awarua Place in the new CMS, has been identified as a gateway to the South connecting people to Stewart Island/Rakiura, the Subantarctic Islands and the Southern Fiords. The Board met with Trustees of the Bluff Hill/Motupōhue Environment Trust and saw, firsthand, some of the pest control work this community group is undertaking. Issues discussed included the recreation facilities available, the impression given by facilities at the start of State Highway 1 and the importance of the area to Tangata Whenua. The Board had afternoon tea at the Te Rau Aroha marae where Bubba Thompson gave a very interesting korero on the carvings and tukutuku panels. That evening the Board shared a dinner with members of the Senior Management Team from the Southland Conservancy.

6 Community Involvement in Board Meetings

Throughout 2011/12 the Board welcomed presentations at its meetings and field trips from a number of different organisations and individuals. A major focus for the year was on water quality, especially at Waituna and the Board heard formal presentations from Environment Southland, Fish and Game and Dairy NZ. In addition, the Board heard from a number of community groups involved with conservation projects in Southland. These included the Bushy Point Habitat Restoration Project (part of the Department's nationwide 'Living Legends' planting project); Bluff Hill/Motupohue Environment Trust; West Otago Promotions Group; Mid Dome Wilding Trees Charitable Trust.

Members of the public also attended Board meetings in Te Anau and Invercargill. In addition, Board members bring concerns to the meetings that have been raised with them by the community.

The Board's agenda and minutes (once confirmed) are sent to groups and individuals on request, and are posted on the Department of Conservation's website:

<http://www.doc.govt.nz/getting-involved/nz-conservation-authority-and-boards/conservation-boards-by-region/southland/>

Currently 17 people or groups receive the Board's confirmed minutes.

7 Mainland Southland West Otago Subantarctics CMS

Throughout 2011/12, the whole Board has been actively involved in the drafting of the new mainland Southland West Otago Subantarctic Islands CMS. Members of the Board have attending public meetings on the new planning document as well as being present at the Department's internal meetings on the CMS. The Department has specifically sought the Board's input on the outcomes at Places as well as on policies and milestones. Over the course of the year, the Board visited a number of key locations within the CMS boundaries and is well informed of the relevant issues in each Place. Peter Ridsdale represented the Board on one of the Navy's trips to the

Auckland Islands to get a firsthand understanding of the issues facing this remote part of the Southland Conservancy.

The Board has been placed under considerable pressure to provide feedback to the Department within tight timeframes. This was to enable the CMS to be as close to completion as possible before the plans were handed over to Shared Services.

8 Implementation Issues

One of the Board's key roles, as set out in the Conservation Act, is overseeing the implementation of national park management plans and CMSs. Over the past year the Board has provided advice to the Department on implementation issues for both the Fiordland National Park Management Plan and the Mainland Southland West Otago CMS. The Board has been extremely concerned that, on a number of occasions, the Department has not heeded its advice.

Fiordland National Park Management Plan

Over the last few years the Department and the community have come to the Board with a number of issues relating to implementation of the Fiordland National Park Management Plan (FNPMP). This year the Board has considered a number of matters relating to applications for concessions which are inconsistent with the FNPMP. The Board has advised the Department to decline a number of applications, including a fun run on the Milford Track; a multi sport event taking place across the FNP and other conservation areas in the CMS; an increase in numbers of guided walkers on the Routeburn Track. The multi sport event was allowed to proceed in spite of the Board's opposition. A decision on guided walkers on the Routeburn Track is still pending.

Milford Air Access - in July 2011 the Minister made a decision to increase the number of landings permitted at Milford Sound. The Board has previously advised the Minister that any increase in numbers would be inconsistent with the FNPMP. Board member, Helen McPhail attended the Minister's public announcement of her decision. At its October meeting, the Board moved expressed its "disappointment with the Minister's decision to exercise her discretion under the FNPMP to increase the number of landings available for concession allocation and encourages the Department to look at all possibilities to reduce effects of aircraft activity within the Park".

Milford Dart Tunnel - The Board provided advice to the Department on a concession application for the Milford Dart tunnel. The advice noted that aspects of the application were inconsistent with the FNPMP. The Department put the application out for public consultation. The Board was of the view that the Department had not heeded its advice so took the unusual decision to write a submission opposing the application. The Board spoke to its submission at the hearings and continues to take an active interest in the outcome of the application. In June 2012, the Board Chair spoke at a public meeting in Te Anau on this and an application for a monorail (see below) to explain the Board's position on these two large scale concessions.

Lifting a portion of the Takahē Special Area - the Board supported the Department's request to change the boundary of the Takahē Special Area along part

of the coastal area. This allows for current usage of the beaches by the public and for the development to of a walking track.

Little Tahiti - the Board has provided advice to the Department on the potential use of Little Tahiti as a campsite to relieve pressure from freedom camping, which is not permitted, at Milford.

Mountain Biking in FNP - The Board has also been giving consideration to a request from the Te Anau community to allow mountain biking in Fiordland National Park. The Board has advised that a plan change is required to allow for this activity and the Department has indicated its support for a plan change process.

Mainland Southland West Otago CMS

Fiordland Link Experience - Advice was provided by the Board to the Department on a concession application for a monorail (Fiordland Link Experience) through the Snowden Forest conservation area. The Board raised concerns about the proposed activity's consistency with the CMS and the significant nature of the effects of the activity on other users and biodiversity in the area. The Board was of the view that the Department had not heeded its advice so again took the decision to write a submission opposing the application. The Board spoke to its submission at the hearings and continues to take an active interest in the outcome of the application.

Conservation Advocacy

Under Section 6N of the Conservation Act, the Southland Conservation Board may advocate its interests at any public forum or in any statutory planning process. During the 2011/12 year the Southland Conservation Board has made the following submissions on resource consent applications:

- Proposed Plan Change 13 – New Dairy Conversions
- Proposed Plan Change 3 (Deep Cove Mooring areas and berthing Space) to the Regional Coastal Plan for Southland 2008
- Proposed Plan Change 2 (Vessel Use in Fiordland and Stewart Island for Agency, Research and Environmental Cleanup Purposes) to the Regional Coast Plan for Southland 2008
- Around the Mountain Cycle Trail

The Board also made submissions on the following:

- Game Animal Council Bill
- Environment Southland's Draft Long Term Plan 2012-22
- Southland District Council's Draft Long Term Plan 2012-22
- Freedom Camping Act 2011 Phase 2
- The Review of the Crown Minerals Act 1991 Regime
- Mountain Safety Council change to Intentions Forms

Over the past year, the Board has also been represented at the following hearings and events:

- Milford Dart tunnel hearings (Helen McPhail)
- Monorail hearings (Rudi Verplancke)
- Routeburn Guided Walks hearings (Helen McPhail)
- Around the Mountain Cycleway hearing (Viv Shaw)
- Select committee hearing on Game Animal Council bill (Robin McNeill)
- Signing of a management agreement between the Department and the Fiordland Wapiti Foundation (Viv Shaw)
- Royal New Zealand Navy visit to Auckland Islands (Peter Ridsdale)
- Deep Cove Moorings meetings (Viv Shaw and John Whitehead)
- Public Meeting in Te Anau on Freedom Camping (Peter Ridsdale)
- Public meeting in Te Anau on tunnel and monorail applications (Viv Shaw)

8.1 SUBCOMMITTEES

Throughout the year the Board has formed a number of subcommittees. These have ranged from subcommittees to assist the Department with the development of the Mainland Southland West Otago Subantarctic Islands CMS to ad hoc subcommittees responsible for making submissions on specific issues. For a full list of subcommittees and their membership see Appendix 2.

MAINLAND SOUTHLAND WEST OTAGO SUBANTARCTIC ISLANDS CMS SUBCOMMITTEE

The Board has been very actively involved in the Mainland Southland West Otago Subantarctic Islands CMS process. Subcommittee members have participated in the Department's CMS Working Party's fortnightly meetings, as well as providing feedback on the outcomes at Places and detailed comments on drafts of the planning document.

CONCESSIONS SUBCOMMITTEE

The Concessions Subcommittee has been very active in providing advice to the Department. A set of triggers exists which the Department uses to determine which concession applications should come to the Board for advice. During the 2011/12 year, the Board has provided advice on 10 applications. Some of these concession applications have been for large scale activities such as a tunnel and a monorail and these are discussed in more detail above.

WHENUA HOU COMMITTEE

The Whenua Hou Committee is a subcommittee of the Southland Conservation Board, established under the Ngāi Tahu Claims Settlement Act 1998 as part of a joint approach to manage the island. It consists of one representative from each of the four Murihiku Papatipu Rūnaka and four members of the Southland Conservation Board. In October 2011, Viv Shaw was elected to the committee to replace Ian Wilson whose term on the Board had expired. Robin McNeill resigned from the committee in June 2012 and was replaced by Fiona Black. In 2011/2012, two meetings were held in November and June. The November meeting took place on Whenua Hou.

8.2 STRATEGIC PLANNING

The Board has undertaken two strategic planning sessions over the past year. With the changes taking place within conservation in New Zealand, the Board has to prioritise its activities and demonstrate its value to the Department of Conservation, the Minister of Conservation as well as the community.

9. Liaison

9.1 NEW ZEALAND CONSERVATION AUTHORITY

The Board received minutes and agendas from NZCA meetings. The Board's new liaison person is Sandra Cook. Unfortunately Sandra has been unable to attend any Board meetings because they always clash with NZCA meeting dates.

In May 2012, Viv Shaw attended the biennial Board Chairs' conference in Wellington organised by the NZCA. It was a valuable opportunity to meet with the Minister, Director General, members of the NZCA and other Board Chairs.

9.2 OTHER CONSERVATION BOARDS

The Board had the pleasure of hosting Otago Conservation Board members Iris Scott and David Holdsworth, at the Board's informal August meeting. Helen McPhail is the Board's liaison representative with Otago and has attended several of their meetings. In addition, Viv met with Abby Smith, the Otago Board Chair, in Wellington and is in regular email contact with her. The Boards share agendas and minutes. Board Support Officers are also in regular contact.

9.3 IWI LIAISON

The Deed of Settlement between the Crown and Te Runanga o Ngāi Tahu and the Ngāi Tahu Claims Settlement Act 1998 require a number of decision makers, including Conservation Boards within the Ngāi Tahu takiwā to consult with and to have particular regard to the views of Te Runanga o Ngāi Tahu.

Gail Thompson and Stewart Bull are Ngai Tahu's representatives on the Board (appointed on the nomination of Te Runanga O Ngai Tahu as established by Section 6 of Te Runanga O Ngai Tahu Act 1996), and are also members of Kaitiaki Roopu. This group of six iwi representatives from the four rūnaka in Southland was established by the Department of Conservation to give effect to the principles of the Treaty of Waitangi and the Ngāi Tahu Claims Settlement Act. The Department consults with this group on a regular basis. The Board has good links with Kaitiaki Roopu, and also maintains good relationships with iwi through the Whenua Hou Committee.

9.4 FISH AND GAME COUNCIL

The Southland Conservation Board continues to liaise with the Southland Fish and Game Council on both a formal and informal basis. Zane Moss gave a presentation to the Board on fresh water issues, especially at Waituna at its August 2011 meeting. The Board has also liaised with Fish and Game over the Around the Mountain resource consent application.

9.5 LIAISON WITH OTHER ORGANISATIONS

John Whitehead represents the Board on the Waiau Working Party, keeping members informed on issues relating to eels and river flows. Rudi Verplancke is the Board's representative on the Leslie Hutchins Conservation Foundation.

Members of the Board also have strong links with a number of community groups in Southland and are active participants in a range of conservation activities. For a full list of Board members' conservation activities in the community see Appendix 4.

9.6 MEDIA

Reporters from the Southland Times regularly attended Southland Conservation Board meetings throughout the year and a number of items have appeared in newspapers following the meetings.

10. Appendices

Appendix 1: Attendance at Formal Board Meetings and Field Trips

| Name | Home Town | Meetings Attended | Field Trips Attended |
|-----------------|------------------|-------------------|----------------------|
| Viv Shaw | Te Anau | 5 out of 5 | 3 out of 3 |
| Robin McNeill | Invercargill | 3 out of 5 | 2 out of 3 |
| Helen McPhail | Gore | 5 out of 5 | 3 out of 3 |
| Gail Thompson | Bluff | 5 out of 5 | 2 out of 3 |
| Paul Duffy | Tokanui | 4 out of 5 | 0 out of 3 |
| Stewart Bull | Riverton/Aparima | 5 out of 5 | 2 out of 3 |
| Fiona Black | Te Anau | 5 out of 5 | 1 out of 3 |
| Peter Ridsdale | Invercargill | 5 out of 5 | 2 out of 3 |
| Rudi Verplancke | Seaward Downs | 3 out of 5 | 1 out of 3 |
| John Whitehead | Te Anau | 5 out of 5 | 3 out of 3 |
| Karyn Owen | Invercargill | 5 out of 5 | 3 out of 3 |

Appendix 2: Subcommittees of the Southland Conservation Board

| | |
|--|---|
| Mainland Southland/West Otago CMS | Concessions |
| John Whitehead (Chair from April 2012) | Karyn Owen (Chair from February 2012) |
| Robin McNeill (Chair until April 2012) | Helen McPhail (Chair until February 2012) |
| Helen McPhail | John Whitehead |
| Gail Thompson | Fiona Black |
| Karyn Owen | Peter Ridsdale |
| Peter Ridsdale | Rudi Verplancke |
| Paul Duffy | Viv Shaw (ex officio) |
| Viv Shaw (ex officio) | |

Whenua Hou Committee

| Name: | Representing: |
|--|------------------------------|
| Tane Davis (Chairman) | Te Runanga o Oraka-Aparima |
| Rodney (Hom) Ryan | Hokonui Runanga |
| Cyril Gilroy | Waihopai Runaka |
| Suzanne Spencer (until 25/01/2012 – sadly, passed away) | Te Runanga o Awarua |
| Estelle Leask (from 6/6/2012) | Te Runanga o Awarua |
| Ian Wilson (until August 2011) | Southland Conservation Board |
| Robin McNeill (until 13 April 2012) | Southland Conservation Board |
| Fiona Black (from 14 April 2012) | Southland Conservation Board |
| Stewart Bull | Southland Conservation Board |
| Helen McPhail | Southland Conservation Board |
| Viv Shaw (from 13 October 2011) | Southland Conservation Board |

The following subcommittees were formally dissolved on 10 February 2012 meeting as they were no longer required:

Rakiura
Subantarctics
CMSs in General
Strategic approach to CMSs
Cleddau flood protection
Milford air access

Appendix 3: Board Members' Conservation Activities in the Community

| Organisation/Activity | Board Member |
|--|----------------------------|
| Fiordland Conservation Trust | Viv Shaw |
| Pomona Island Charitable Trust | Viv Shaw John Whitehead |
| Waiau Working Party (Board rep.) | John Whitehead |
| Waiau Wildlife & Fisheries habitat Enhancement Trust | John Whitehead |
| Walking Access Commission Mapping Advisory Group | Robin McNeill |
| Federated Mountain Clubs of New Zealand | Robin McNeill |
| Te Araroa Southland Trust | Robin McNeill |
| South Catlins Development and Environmental Trust | Paul Duffy |
| Dog Island Trust | Peter Ridsdale |
| Leslie Hutchins Conservation Foundation (Board rep.) | Rudi Verplancke |
| South West Endangered Species Charitable Trust | Stewart Bull |
| Rakiura Titi Komitee | Stewart Bull |
| Rakiura Titi Islands Administering Body | Stewart Bull |
| Fiordland Marine Guardians | Stewart Bull |
| Fiordland Marine Guardians Management Group | Stewart Bull |