

Southland Conservation Board Te Rōpū Atawhai o Murihiku

Annual Report

1 July 2019 – 30 June 2020



ISSN 1172-9198 (print)
ISSN 1179-4224 (online)

Front Cover: The Southland Conservation Board and Department of Conservation Staff at Port Pegasus, Rakiura, February 2020. Photographer: William Watt.

Southland Conservation Board Te Rōpū Atawhai o Murihiku

Annual Report

1 July 2019 – 30 June 2020

Presented to the New Zealand Conservation Authority
pursuant to Section 6 (O) of the Conservation Act 1987

Published by
Southland Conservation Board
c/- Department of Conservation
Po Box 743 Invercargill 9840
southlandconservationboard@doc.govt.nz

Contents

Contents	4
1. Chairperson’s report.....	5
2. Introduction.....	6
3. Conservation Board Region.....	7
3.1 Conservation features of the Area.....	8
4. Board Functioning.....	9
4.1. Board Functions Under Section 6m of the Conservation Act 1987	9
4.2. Powers of the Board under Section 6n of the Conservation Act 1987	9
4.3 Board Functions under the National Parks Act 1980	9
4.4 Board Membership.....	10
4.5 Members Profiles	10
4.6 Board Meetings	13
4.7 Attendance.....	14
4.8 Board Committees and Representation.....	14
4.9 Representation	15
4.10 Training for members	16
4.11 Community and DOC Involvement in Board Meetings.....	16
4.12 Annual Work Plan	16
4.13 Field Trips and site inspections	17
5. Statutory activity	20
5.1 Conservation Management Strategy (CMS).....	20
5.2 Management plans	20
5.3 Implementation monitoring	20
6. Advice and Advocacy	21
6.1 Liaison.....	21
6.2 Other Conservation Boards liaison	21
6.3 New Zealand Conservation Authority liaison.....	21
6.4 Department of Conservation advice.....	22
6.5 Community advocacy and involvement	22
6.6 Community visibility.....	22
6.7 District and Regional Councils advocacy and advice	22
6.8 Iwi liaison and advocacy.....	22
7. Conclusion	23

1. Chairperson's report

The past year has been a year of two halves, pre Covid-19 and during the Covid-19 pandemic. Due to this extraordinary situation the Board has had to hold one board meeting virtually, which has been a steep learning curve for all involved.

In spite the Covid-19 restrictions the Board has had an active year, the highlight being the board meeting and field trip to Rakiura. The field trip consisted of a boat cruise down the east coast of the Island to Port Pegasus, where we got to understand the magnitude and beauty of the area. The Board has been actively involved in a range of conservation interests in the Southern Rakiura area. This includes submitting against aquaculture development on this unspoiled coastline and actively promoting the concept of a Southern Rakiura Wilderness Area inland of Port Pegasus & along the Tin Range.

The Board has also been busy with the Regional Coastal Plan Review and giving advice to the Department on the many concession applications for activities in the region.

There have also been some disappointments for the Board this year. We are concerned that the Fiordland National Park Management Plan Review has not yet been set in motion. The Board are prepared and eagerly waiting to begin this review. We were also disappointed that the extension of the Campbell Island Marine Reserve did not happen and consider this will cost the lives of our nationally vulnerable NZ sealions & seabirds.

It was devastating to hear that the Auckland Island Predator Free Project was put on hold after so much progress has been made. However, the Board were pleased that the team was seconded to the Predator Free Rakiura programme and we hope the Auckland Island Project will start again shortly.

That said, the Board is broadly positive of the efforts of the country & the Department in the progressing of PF2050 throughout the region, and commends the Department on the amount of aerial predator control that has occurred in respect to the mega mast of 2019.

The Board was pleased to welcome Chantelle Subritzky to the Board this year. We now have a good balance of gender, age & interests to help make informed decisions. We were sad to lose Kathryn Roberts our Board Support Officer who moved onto other things, but we are now ably looked after by Julieanna Little who had to deal with the Covid-19 crisis on her first week in a new position – Thanks.

On a personal note, I have thoroughly enjoyed my relationships with Aaron Fleming, the Southern Director, The Statutory Manager Donna Shepard, the three Operation Managers (Nedra, John & Ren) and all the DOC staff who have facilitated the Board in its work.

Finally, I would like to thank all the Board members for their commitment to conservation and all the behind the scenes work that is carried out outside of our scheduled meetings.



John Whitehead
Chairman

2. Introduction

This is the 29th Southland Conservation Board Annual Report.

The Southland Conservation Board had 11 members for the 2019-2020 year appointed by the Minister of Conservation under the terms of the Conservation Act 1987. The Board farewelled Maurice Rodway, and welcomed Chantelle Subritzky. Two reappointments were made of Stewart Bull and William Watt. John Whitehead was reappointed as Chair, and Alison Broad was elected as Deputy Chair.

Conservation Boards are independent advisory bodies, established by statute. The Southland Conservation Board represents the community and offers interaction between communities and the Department of Conservation, within the area of jurisdiction of the Board.

The Board has several statutory roles under various Acts including:

- The recommendation of Conservation Management Strategies (CMS) to the New Zealand Conservation Authority (NZCA) for approval
- Reporting on the implementation of the CMS
- The approval of Conservation Management Plans
- The recommendation of National Park Management Plans to the NZCA for approval
- Advising the Department of Conservation and NZCA on conservation matters, and proposed changes to the status of nationally and internationally significant land.
- Liaising with Fish and Game Councils on conservation matters
- Carrying out other powers delegated by the Minister of Conservation, the Conservation Act or any other Act.

Board functions are outlined in section 6(M) of the Conservation Act 1987 and the powers, which enable the Board to carry out those functions, are under 6(N) of the Act. Boards also have a number of functions under section 30 of the National Parks Act 1980.

Section 6(O) of the Conservation Act 1987 requires conservation boards to provide the NZCA with an annual report as soon as practicable after the 30th June each year. In recognition of this requirement, the Southland Conservation Board submits this annual report.

3. Conservation Board Region

The Southland Conservation Board's area of jurisdiction covers the area of 7,008,166.28 hectares as displayed in the map below. This extends out to the 12-nautical mile limit with respect to coastal and marine issues, and out to the 200-nautical mile limit with respect to protected species. This includes the areas around the Auckland, Snares, Campbell, Antipodes and Bounty Islands

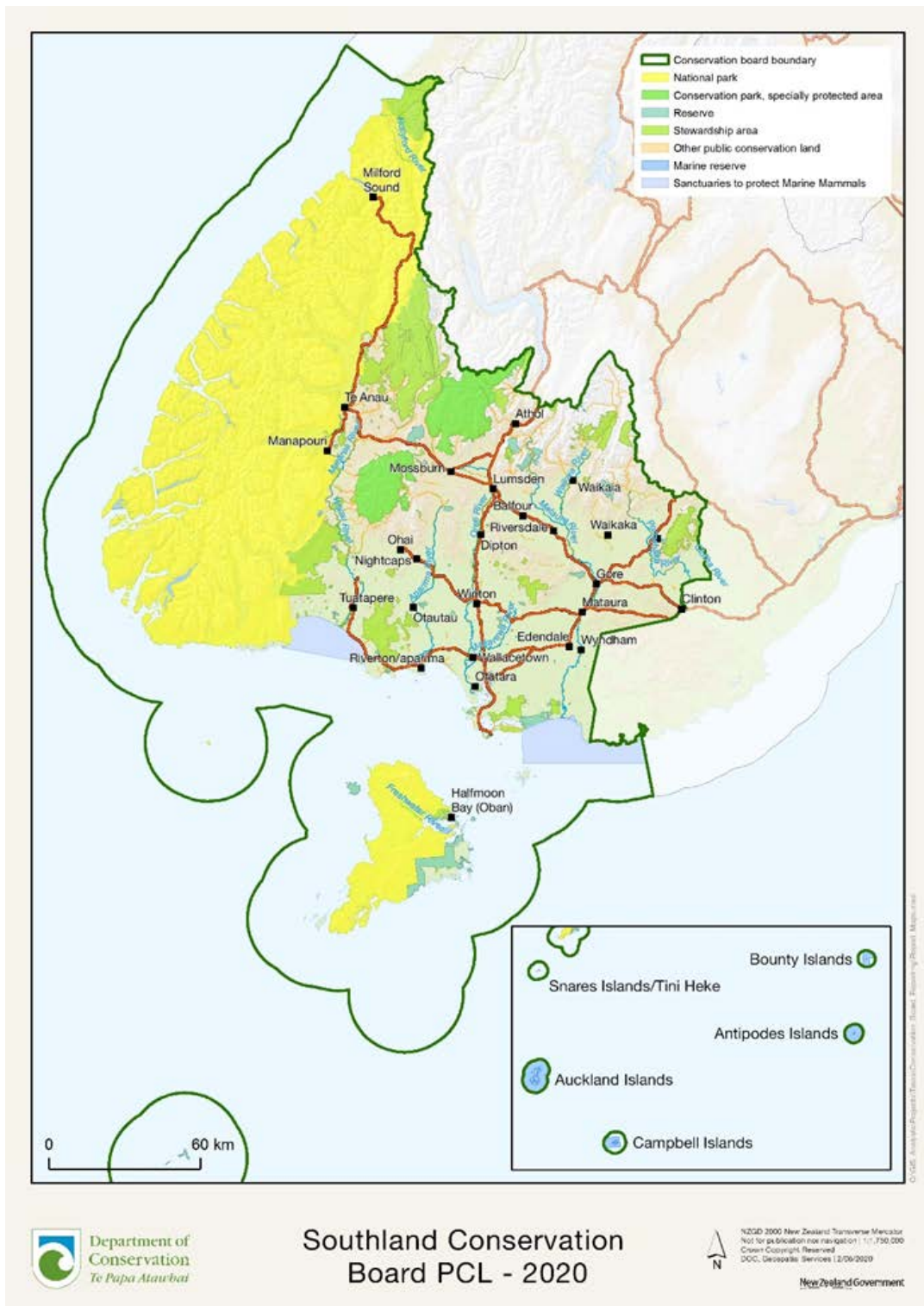


Figure 1. Southland Conservation Board Jurisdiction

There is a large number of issues which are of interest to the Board, these include;

- Ecosystem management and the management and enhancement of our many threatened species e.g. kākāpō, takahē, kiwi, rock wren, snipe, and mistletoe, etc.
- Management of recreational and tourist facilities
- Management of historic sites
- Concession activities, including those relating to recreation and tourism activities, grazing, industrial use, beaches, filming, and gravel extraction
- Marine conservation and protection

Approximately 26.78% of New Zealand's public conservation land and area lies within Southland's board jurisdiction. The total area of the Southland Council Region comprises of 5,523,807 ha. Of this total, 96.8% (5,347,631 ha) is contained within the boundary of the Southland Conservation Board's area of jurisdiction.

Public conservation land and areas make up 49.83% of all land in the Southland Conservation Boards rohe. This consists of:

- 1,881,970.55 hectares of Public Conservation Land
- 658,556.9 hectares of Sanctuaries to Protect Marine Mammals
- 951,920.30 hectares of Marine Reserves

3.1 Conservation features of the Area

- Fiordland National Park - 1,278,987 ha
- Rakiura National Park - 140,357 ha
- Eyre Mountains/Taka Ra Haka Conservation Park - 65,583 ha
- Catlins Conservation Park - 2.92 ha
- 72 Scenic Reserves - 26,952 ha
- 16 Recreation Reserves - 317 ha
- 3 Historic Reserves - 465 ha
- 15 Marine Reserves - 951,920 ha
- 3 Marine Mammal Sanctuaries - 658,556 ha
- 5 National Nature Reserves
- 1 Ecological Area - Lindsay Ecological Area - 127 ha
- 352 Stewardship Areas - 235,823 ha
- 2 Wilderness areas - Pembroke and Glaisnock Wilderness Area - 141,712 ha
- 2 World Heritage Areas - Subantarctic Islands and Fiordland part of Te Wāhipounamu
- 1 Ramsar site - Awarua Wetland
- 1 Dark Sky Sanctuary
- 700 Archaeological Historic Sites
- 120 Huts
- 1,200 Km of Track
- 3,600 Structures

4. Board Functioning

4.1. Board Functions Under Section 6m of the Conservation Act 1987

The functions of the Board are:

- 1) To recommend the approval by the Conservation Authority of conservation management strategies, and the review and amendment of such strategies, under the relevant enactments
- 2) To approve conservation management plans, and the review of amendments of such plans, under the relevant enactments
- 3) To advise the Conservation Authority and the Director-General on the implementation of conservation management strategies and conservation management plans for the area within the jurisdiction of the Board
- 4) To advise the Conservation Authority or the Director-General
 - a. On any proposed change of status or classification of any area of national or international importance; and
 - b. On any other conservation matter relating to any area with the jurisdiction of the Board
- 5) To liaise with any Fish and Game Council on matters within the jurisdiction of the Board
- 6) To exercise such powers and functions as may be delegated to it by the Minister under this Act or any other Act

4.2. Powers of the Board under Section 6N of the Conservation Act 1987

- 1) Every Board shall have all such powers as are reasonably necessary or expedient to enable it to carry out its functions.
- 2) Without limiting the generality of subsection (1), each Board may -
 - a. Advocate its interests at any public forum or in any statutory planning process; and
 - b. Appoint committees of members and other suitable persons, and delegate to them functions and powers
- 3) The power conferred by subsection (2)(a) shall include the right to appear before courts and tribunals in New Zealand and be heard on matters affecting or relating to the Board's functions.

4.3 Board Functions under the National Parks Act 1980

There are two national parks within the Board's region: Fiordland National Park and Rakiura National Park. The Board also advocates on cross-boundary issues with Mount Aspiring National Park (which is the responsibility of the Otago Conservation Board).

4.4 Board Membership

There were 11 Board members for the reporting year appointed by the Minister of Conservation; four whose terms expired on 30 June 2019, which three were reappointed for a further 3-year term and one which was a new appointment.

The following table lists the membership of the Southland Conservation Board between 1 July 2019 and 30 June 2020 and their term of office.

Table 1: Board Membership

Board member	Area	Term start	Term end	Term served
Alison Broad	Invercargill	01/07/14	30/06/20	6 Years
Chantelle Subritzky	Invercargill	01/07/19	30/06/22	1 Year
Claire Jordan	Tuatapere	01/07/18	30/06/21	2 Years
Estelle Leask	Bluff	01/07/18	30/06/21	2 Years
Fiona Black	Te Anau	01/01/11	30/06/21	9.5 Years
John Whitehead	Te Anau	01/01/11	30/06/22	9.5 Years
Peter McDonald	Dipton	01/07/17	30/06/20	3 Years
Shona Sangster	Rakiura	01/07/18	30/06/21	2 Years
Stewart Bull	Invercargill	01/05/09	30/06/19	10 Years
Vaughn Filmer	Te Anau	01/07/17	30/06/20	3 Years
William Watt	Rakiura	01/07/16	30/06/22	4 Years

4.5 Members Profiles

John Whitehead of Te Anau (Chairperson)

Appointment term: 1 January 2011 to 30 June 2022

John Whitehead is a retired farmer. He is experienced in negotiating environmental outcomes and consensus building. He has a sound understanding of governance issues and conservation laws and policies. His lifelong interest is in natural history and conservation, in particular, high-country issues, rivers, and indigenous fisheries management and Predator Free 2050. He is chairman of the Pomona Island Charitable Trust (an Island restoration project), a trustee on the Waiou Fisheries & Wildlife Habitat Enhancement Trust, a trustee on the Mid Dome Wilding Pine Trust and a member of the Whenua Hou Management Committee. His outdoor recreation interests are tramping and predator control.

Fiona Black of Te Anau

Appointment term: 1 January 2011 to 30 June 2021

Fiona Black is the Manager of Concessions and Consents for Real Journeys. She has a sound knowledge of legislation and good working relationships with Environment Southland and the Department. Fiona is well connected to the Te Anau community and knows the challenges with living and working in Milford Sound. She has a strong interest in marine wildlife conservation. Her outdoor recreation interests are tramping, photography, ornithology, natural heritage, conservation, and boating.

Alison Broad of Invercargill

Appointment term: 1 July 2014 to 30 June 2020

Alison Broad is a consultant in community projects and processes, with a Masters degree in Education. Alison has expertise in strategic thinking, policy development, advocacy, and development and governance for community benefit. Alison has extensive governance experience and is currently board chair of the Southern Institute of Technology as well as a trustee of several community-based organisations. Her outdoor recreation interests are walking, kayaking, and biking.

Stewart Bull of Riverton

Appointment term: 1 May 2009 to 30 June 2022

Stewart is the chair of Ōraka-Aparima Rūnanga, a member of the Whenua Hou committee, Fiordland Marine Guardians, Chair of Te Ao Marama, iwi resource management committee, Chair of the Rakiura tītī committee, and a member of the Rakiura tītī administering body. Tangata tiaki/kaitiaki, customary fisheries management, Stewart has always had an interest and participated in environment and resource management throughout his adult life and has always felt the concept of Kaitiakitanga/stewardship is a responsibility he feels he has an absolute obligation to. Stewart believes many hands make light of the work and if we all participate in a positive manner, then he is sure the world will be a more comfortable living space for us and the future generations to come. We must not fail while on our watch as there will be consequences!

Vaughn Filmer of Te Anau

Appointment term: 1 July 2017 - 30 June 2020

Vaughn Filmer is a teacher of Senior Geography, Outdoor Environmental Education, Junior Health and Physical Education and Social Studies at Fiordland College, a Green-Gold Enviroschool in Te Anau. He is also a founding member of 'Kids Restore the Kepler', a conservation and education project in Fiordland National Park. Vaughn regularly carries out pest control, biodiversity monitoring, and education fieldwork as a part of this project and others. He was the Sir Peter Blake Trust Environmental Educator for 2017. His outdoor interests include trail running, mountain biking, snowboarding, kayaking, pack-rafting, mountaineering, tramping and camping - and he is a rock climbing/abseiling instructor. He is President of Te Anau Cycling Inc. and leading the development of the Fiordland Indoor Climbing Wall.

Claire Jordan of Tuatapere

Appointment term: 1 July 2018 - 30 June 2021

Claire is an environmental planner and scientist who has worked in policy and science roles in central and local government and as a consultant. Claire is the third generation of her family to live on their dairy farm, 30 km north-west of Tuatapere on the western bank of the Waiau River. Claire is an active member of the Waiau Rivercare Group, which advocates on behalf of the Waiau River and the surrounding community. Claire holds a First-Class Honours Degree from the University of Canterbury in Chemistry and Environmental Science. Claire currently divides her time between her young family and studying towards a Master of Resource and Environmental Planning Degree through Massey University. Claire loves tramping, particularly with the lure of a view, and spends as much time as she can in Te Anau with her family, enjoying time on the lake and in the national park. The experience of seeing the world through the eyes of her young children motivated Claire to become a member of the Southland Conservation Board so that they might have the same opportunities she has had to wonder at our precious, unique and spectacular country and its taonga as they grow.

Estelle Pera-Leask of Bluff

Appointment term: 1 July 2018 - 30 June 2021

Estelle (Ngāi Tahu, Whakatōhea, Ngāti Ruanui) is a member of the Bluff Hill Motupōhue Environment Trust (BHMET) and the current chair. She is a Director on the Board of Predator Free 2050, and Awarua Runanga representative on the Whenua Hou Komiti. She is the Te Rūnanga o Ngāi Tahu representative on the Takahē Recovery Programme and supports the Department of Conservation Kākāpō Recovery Programme and Predator Free Rakiura Project. Together with her husband Peter, they help coordinate the BHMET volunteers undertaking predator control and habitat restoration. Born and raised in Bluff, she believes kaitiakitanga (guardianship) of the natural environment is a privilege and a responsibility. Her interests include growing native plants, mahinga kai, bushwalking, rongoa and Mātauranga Māori.

Peter McDonald of Dipton

1 July 2017 - 30 June 2020

Peter together with his wife Kim Spencer-McDonald, daughter Laura and son William farm a 669-ha sheep farm in Dipton in the Caroline Valley. The McDonalds settled in Dipton in 1897 and have been sustainably farming the land ever since. Peter is active in community roles including as a volunteer fireman for just over twenty years. Peter has been involved in conservation at a local level for many years and is excited about continuing contribution at a provincial level.

Shona Sangster of Stewart Island

Appointment term: 1 July 2018 - 30 June 2021

Shona is a Stewart Island/Rakiura resident who is passionate about conservation. She grew up in the Waitakere Ranges in Auckland which gave her a passion for the positive impact of predator control on native bush. She is the chair of the Stewart Island/Rakiura Community and Environment Trust, which protects 210 hectares of land on the Acker's Point peninsula. She co-edits the monthly Stewart Island News and works part-time for Glowing Sky Merino and the Southland District Council. She is a member of the Rakiura Marine Guardians and has volunteered for the Kākāpō Recovery Programme. She holds a Master of Arts in Philosophy from The University of Auckland and a Trinity College London Certificate in TESOL. Her interests include tramping, fishing, beekeeping and making art.

Chantelle Subritzky of Invercargill

Appointment term: 1 July 2019 - 30 June 2022

Chantelle Subritzky is the strategic projects manager at Great South, Southland's Regional Development Agency. She has a Master's in Politics and experience working in both local and central government, in roles that were responsible for strategic planning, project management and communications. She is a keen outdoor enthusiast and enjoys heading out to explore the bush, rivers, lakes and mountains of Southland. She is passionate about enabling kaitiakitanga for the natural environments that New Zealanders work and play in.

William J (Bill) Watt of Invercargill

Appointment term: 1 July 2016 to 30 June 2022

Bill Watt is a retired planning and resource management consultant, now living on Rakiura, where he has enjoyed holidays since the early 1950s. He also has a long association with Murihiku (Southland), where he worked as a planner and senior executive in regional and local government from 1979 to 2010 and since then as a consultant. As a trained geographer and planner, Bill has a keen interest in the conservation values of southern New Zealand, and also an appreciation of the values and needs of people and communities. Bill's outdoor interests include yachting, sea kayaking, bushwalking, and mountain biking

4.6 Board Meetings

The Southland Conservation Board held six meetings during the reporting period. Venues for the Board meetings are varied each meeting to ensure wide coverage and enable members of the public in the district to attend meetings and access the Board. The May meeting was held virtually through Microsoft Teams due to Covid-19 restrictions.

Table 2: Board meeting dates and location

Board meeting date	Meeting location and venue
22 August 2019	Te Rau Aroha Marae, Bluff
02 October 2019	Corinthian Centre, Invercargill
28 November 2019	Department of Conservation, Invercargill
04 February 2020	Stewart Island RSA, Oban., Rakiura
07 May 2020	Virtual Meeting
25 June 2020	Department of Conservation, Invercargill

4.7 Attendance

The table below summarises the number of Board meetings attended by members out of the total number of meetings held during the year.

Members attended other meetings and events in their role as Board members, including subcommittee meetings and representative roles.

Table 3: Member Attendance

Board Member	Board meetings	Field Trips
Alison Broad	6/6	2/2
Claire Jordan	6/6	2/2
Estelle Leask	5/6	2/2
Fiona Black	5/6	2/2
John Whitehead	6/6	2/2
Chantelle Subritzky	6/6	2/2
Peter McDonald	5/6	2/2
Shona Sangster	6/6	2/2
Stewart Bull	5/6	1/2
Vaughn Filmer	4/6	1/2
William Watt	6/6	2/2

4.8 Board Committees and Representation

In July 2017 it was moved at a Board meeting that all sub-committees be closed, except the Whenua Hou committee, as it is a requirement of the Ngāi Tahu Claims Settlement Act 1998.

4.8.1 Whenua Hou Committee

This subcommittee was established under section 331 of the Ngāi Tahu Claims Settlement Act 1998, as a part of a joint approach to the management of Whenua Hou. The Committee consists of one representative from each of the four Murihiku papatipu rūnanga and four from the Southland Conservation Board.

Table 4: Whenua Hou Committee

Board representatives	Runanga Representatives
Fiona Black	Cyril Gilroy (Waihōpai)
Stewart Bull	Estelle Leask (Āwarua)
John Whitehead	Tane Davis (Ōraka-Aparima)
Alison Broad	Rodney (Hom) Ryan (Hokonui)

4.9 Representation

Members of the Board have strong links with many community groups in Southland and are active participants in a range of Conservation activities.

Table 5: Summary of the representation

Organisation/Activity	Board Member
Whenua Hou Committee	Alison Broad
Rakiura Marine Guardians	Bill Watt
Southland District Council	Chantelle Subritzky
Fish & Game	Claire Jordan
Bluff Hill Motupōhue Environment Trust	Estelle Leask
Predator Free Bluff	Estelle Leask
Fiordland Marine Mammal Liaison Group	Fiona Black
Les Hutchins Conservation Foundation	Fiona Black
Manapouri Doubtful Sound Commercial User Group	Fiona Black
Whenua Hou Committee	Fiona Black
DOC Community Fund	John Whitehead
Otago Conservation Board	John Whitehead
Pomona Island Charitable Trust	John Whitehead
Waiiau Wildlife and Fisheries habitat enhancement trust	John Whitehead
Waiiau Working Party	John Whitehead
West Coast Tai Poutini conservation Board	John Whitehead
Whenua Hou Committee	John Whitehead
Mid Dome Wilding Pine Trust	John Whitehead
Environment Southland	Peter McDonald
Gore District Council	Peter McDonald
Predator Free Southland	Peter McDonald
Predator Free Rakiura	Shona Sangster
Rakiura Marine Guardians	Shona Sangster
Stewart Island Rakiura Environmental Trust	Shona Sangster
Ulva Island Trust	Shona Sangster
Fiordland Marine Guardians	Stewart Bull
Rakiura Tītī Committee	Stewart Bull
Rakiura Tītī Islands Administering Body	Stewart Bull
South West Endangered Species Charitable Trust	Stewart Bull
Whenua Hou Committee	Stewart Bull
Kids Restore the Kepler	Vaughn Filmer

4.10 Training for members

The Board held a full day governance workshop, run by an independent facilitator prior to the October meeting. The workshop covered items such as: what the Board does, what the Board should do, conflicts of interest, and how to make the best use of Board members strengths for optimum conservation outcomes.

The Board subsequently drafted a set of “Guiding Principles” to help with decision making (Appendix 2). These guiding principles were then adopted by the board in November 2019.

The Board also receives regular updates on the Department’s activities provided in the status report which is considered at each meeting. Topics covered this year were:

- Fiordland National Park current state
- Fiordland National Park Management Plan Review
- Predator Free Southland
- Permissions and statutory land management processes
- Tiakina ngā manu – Battle for our Birds
- Maukahuka Pest Free Auckland Island

4.11 Community and DOC Involvement in Board Meetings

Public forums are offered at most Board meetings for members of the community to raise conservation issues with the Board. The February board meeting was held on Rakiura, with a special public meeting held the day prior.

The Board welcomed presentations from members of the public and Department staff at the meetings during 2019/2020 presentations were received from:

- Marcus Roy, Southland District Council – Southland District Plan & Policy Changes
- Tim Allen, OMV – Great South Basin Exploration
- Keith Turner – Milford Opportunities Project
- Simon Gomez – Rakiura Maori Lands Trust
- Graham Watson – Fish & Game
- Ken Murray, Environment Southland – Southland Regional Coastal Plan
- Bridget Carter, Southland District Council – Predator Free Rakiura
- Vaughn Filmer, Te Anau Cycling Inc – Snowden Forest Park Mountain Bike Trail Network
- Rose Hanley-Nickolls – Department of Conservation - Maukahuka Pest Free Auckland Island
- Nedra Burns, Department of Conservation – Fiordland National Park Management Plan
- Tim Whittaker, Department of Conservation – Tenure Review
- Ren Leppens, Department of Conservation – Rakiura Update
- G & G Neave, B Osborn, E Hamilton – Public Rakiura

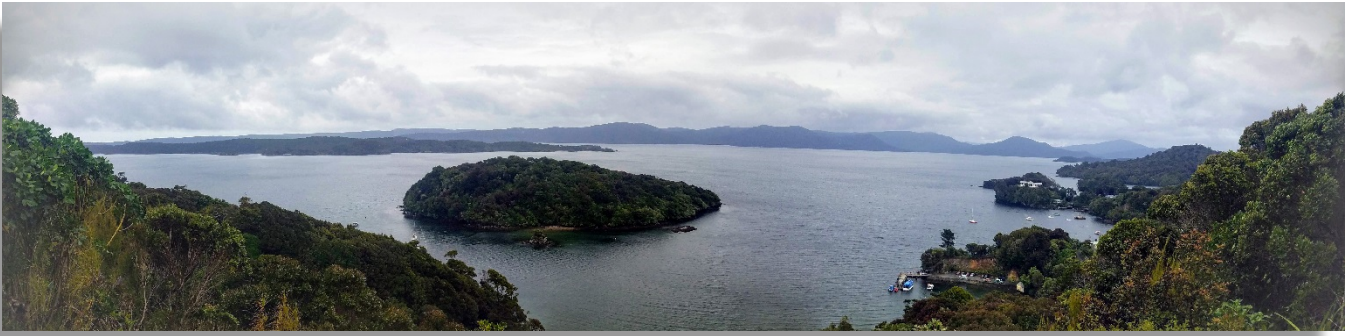
4.12 Annual Work Plan

Please refer to Appendix 1 for the full Board Annual Work Programme.

4.13 Field Trips and site inspections

The Board had two field trips in the past year.

Field Trip date	Field Trip destination and purpose
22 August 2019	Te Rau Aroha Marae, Bluff A very successful two-day noho was held at Te Rau Aroha Marae in Bluff with representatives of the Southern Rūnanga to reintroduce the Board and to korero on issues of mutual concern. The usual Board meeting was held on the second day.
4 February 2020	Port Pegasus, Rakiura The Southland Conservation Board sailed from Oban down the east side of Rakiura to Port Pegasus. This excursion gave the Board a much greater understanding of Southern Rakiura in respect to the proposed Southern Stewart Island Wilderness Area, The Regional Coastal Plan Review, possible aquaculture and the new sealion colony. The Board was impressed with the landscape and biodiversity values of the region, though it has concerns with the amount of herbivore browsing and damage caused by rats & cats.



Photos on the previous page:

Top: View of Paterson Inlet from Observation Rock Viewpoint in Oban, Rakiura. The pest-free open sanctuary Ulva Island/Te Wharawhara can be seen in the background. Photographer: Vaughn Filmer

Second Row Left: View of Halfmoon Bay from the waterfront of Oban, Rakiura. Photographer: Vaughn Filmer

Second Row Right: View of Halfmoon Bay, Rakiura with cruise ship at anchor. Titi Islands in the distance. Photographer: Vaughn Filmer

Third Row Left: Smugglers Cove, Port Pegasus, Rakiura. Photographer: Vaughn Filmer

Third Row Right: Old freezer site, North Arm, Port Pegasus, Rakiura. Photographer: Vaughn Filmer

Bottom: East Coast Rakiura approaching Port Pegasus, south of Lords River. Photographer: Vaughn Filmer

5. Statutory activity

The Southland Conservation Board is very passionate about advocacy.

In the past year, the Board made five submissions on various plans in the Southland region. The Board also featured in seven articles in the local paper as a result of the content discussed at Board meetings.

5.1 Conservation Management Strategy (CMS)

There are two CMSs in the Southland Conservation Board's area: The Southland / Murihiku CMS and the Rakiura CMS.

The Southland / Murihiku CMS was approved and published in 2016, the Rakiura CMS was approved and published in 2011.

The Board receives implementation and monitoring reports on both of these strategies and commented on them then passed these reports on to the New Zealand Conservation Authority.

5.2 National Park Management plans

There are two National Park Management Plans in the Southland Conservation Board Area, the Rakiura National Park Management Plan and the Fiordland National Park Management Plan.

The Fiordland National Park Management Plan review is due to start soon, the Board has put a lot of effort in preparing for the review over the past year.

5.3 Implementation monitoring

The Board considered implementation reports on the management plans and strategies for the Rakiura National Park, Fiordland National Park, and the Southland / Murihiku region. Members were impressed overall with the progress made and the range and amount of work completed. Once the Board read and approved the reports they were passed on to the New Zealand Conservation Authority.

6. Advice and Advocacy

All Board members have responsibility for liaising with other groups when opportunities arise, and some members have specific roles in liaison.

The Board appointed various members to liaise with groups and agencies.

6.1 Liaison

Table 7: Liaison persons

Liaison Person	Group, agency or organisation
John Whitehead	DOC Community Conservation Fund
Stewart Bull	Fiordland Marine Guardians
Shona Sangster	Predator Free Rakiura Governance Group
Claire Jordan	Fish and Game Southland
Peter McDonald	Environment Southland
John Whitehead	Otago Conservation Board
Peter McDonald	Gore District Council
Peter McDonald	Predator Free Southland

6.2 Other Conservation Boards liaison

The Southland and the Otago Conservation Boards hold a close relationship. There are two liaison members, The Chair of the Southland Conservation Board and Robyn Shanks of the Otago Conservation Board. The Chairs; John Whitehead of the Southland Conservation Board and Tara Druce of the Otago Conservation Board and the two Board Support Officers Kathryn Roberts (Julieanna Little from 2020) for the Southland Conservation Board and Teresa Murphy for the Otago Conservation Boards keep in close contact with the Chairs often attending each other's meetings.

The annual Board Chairs conference hosted by the NZCA is a great opportunity for Board networking nationally.

6.3 New Zealand Conservation Authority liaison

The Southland Conservation Boards NZCA liaison is Jan Riddell who attends most Southland Conservation Board Meetings. The Chair also receives regular letters from the Chair of the NZCA as well as their agendas and minutes which are passed onto the Board.

6.4 Department of Conservation advice

The Board provided both formal and informal advice to the Department on the following issues:

- Rakiura National Park
- Fiordland National Park
- Milford Sound
- Tenure Review
- Cycleway proposals
- Whitebait proposals
- Notified Concession applications
- The Board is still seeking ways to give meaningful advice on Departmental expenditure

6.5 Community advocacy and involvement

The Board believes that working with conservation organisations and members of the public is very important. Meetings were held in different parts of the region and opportunities for the public to attend Board meetings were advertised.

Members of the public attended the Public Forums at several of the year's meetings and a range of issues were raised. The Board appreciated their input and efforts made to attend the meetings and responded to questions asked or concerns raised.

Public forum issues raised were:

- Possible benefits of Marram grass on the environment at Mason Bay, Rakiura

6.6 Community visibility

The Board maintains a presence on the Department's website. Information on being on a Conservation Board was also developed and advertised/displayed at <https://www.doc.govt.nz/about-us/statutory-and-advisory-bodies/conservation-boards/>.

6.7 District and Regional Councils advocacy and advice

The Board appreciates the opportunities to meet with representatives of the four local Councils as there are several regional issues in which it is interested.

Over the past year the Board has communicated with the local councils via email, the Board also has Peter McDonald an Environment Southland Councillor. Both the Regional Council and Southland District Council have presented at Board Meetings.

6.8 Iwi liaison and advocacy

Two members of the Board are nominated by Ngāi Tahu as required under the Ngāi Tahu Settlement Act 1998.

The Whenua Hou Management Committee (a Board subcommittee under the Ngāi Tahu Settlement Act) met three times during the year with a field trip to Whenua Hou to get a greater understanding of any management issues and how to get greater involvement with the Island by the descendants of the original settlers of the Island.

The Board also held a successful two-day noho and Board meeting at the Te Rau Aroha Marae in Bluff

7. Conclusion

In the past 12 months, the Board has achieved a lot, they have become well prepared for the upcoming Fiordland National Park Management Plan review. The Board has also put a lot of effort into formalising the internal process and upskilling. The Board has learned a lot in the last year and look forward to another year where they can achieve more for conservation. Attached is the Board's work plan for the year ending 30 June 2020 with a full record of what was set out to be achieved and what was achieved.

Southland Conservation Board Workplan 1 July 2019 – 30 June 2020

Status indicator

Colour	Indicates
Green	Completed
Yellow	Started and is ongoing
Red	Not started yet

PART A: REGIONAL WORK PROGRAMME

1 Review / development of statutory management plans including conservation management strategies (CMS)

1.1 Board objective:

The Board will be involved with the review of the Fiordland national Park Management Plan

Planned Board activities, success measures and key milestones

	Action	Status	Progress commentary
A	The Board will work with the Department planners and Ngāi Tahu to initiate a review of the Fiordland National Park Management Plan.	Yellow	The Board is frustrated with the lack of progress in initiating the FNPMP review. There appears to be a lack of planning resources within DOC.

1.2 Board objective:

In conjunction with the Department the Board will determine priorities for the implementation of the Murihiku/Southland Conservation Management Strategy, the Rakiura Conservation Management Strategy and the Rakiura National Park management Plan.

Planned Board activities, success measures and key milestones

	Action	Status	Progress Commentary
A	The Board will continue to work with the Department and the community on the Milestone in the Rakiura CMS on the gazettal of a Wilderness Area in the Southern Place Rakiura		The Board is in dialogue with FMC, NZCA, DOC & the local community to try to move the gazettal process through the DOC planning system.
B	The Board will carry out its statutory role monitoring and reporting on the Murihiku/ Southland CMS to make sure it has achieved the five-year milestones.		The Board has carried out an appraisal of the Murihiku/ Southland CMS. Most milestones had been achieved; some were now irrelevant & those not achieved are now being acted on.

2 Other statutory functions

2.1 **Board objective:**

The Board will continue to advise the Department on the reclassification of Stewardship Land in our rohe and on the issuing of concessions that meet the Board's triggers.

The Board will continue to further our relationship with Southland Fish & Game.

Planned Board activities, success measures and key milestones

	Action	Status	Progress commentary
A	The Board will continue to advocate that all stewardship land that is within the Te Wāhipounamu World heritage Area be reclassified		The Board is pleased that reclassification of the Te Wāhipounamu world heritage stewardship land is third in the national priority setting and look forward to the process starting
B	The Board will meet with Fish and Game at least once a year.		The Board has met with the Chair of Southland Fish & Game, and informal meetings have been held with staff.
C	The Board will advise the Department on concession applications that meet the Board triggers. The Board will follow up with the Department on whether the advice was heeded.		The Board has given advice to the Department on all concessions that have met the Boards triggers. Most of the advice have involved applications concerning Milford Sound.
D	The Board will support the creation of the Hump Ridge Great walk and will advise the Department through any statutory changes.		The Board has had preliminary discussions with the Department concerning timelines and public consultation.

2.2 Board objective:

The Board will advocate for and support predator free initiatives both locally and nationally

Planned Board activities, success measures and key milestones

	Action	Status	Progress commentary
A	The Board will support and advocate for Predator Free Auckland Islands		The Board is disappointed with the temporary halt to this project. It will now be hard to meet the PF2020 milestone of a PF Subantarctic
B	The Board will support and advocate for Predator free Rakiura		The Board continues to support this project wherever possible with Board members on the project team
C	The Board will work with the Predator Free Southland Group to advance the predator free cause in Southland		The Board has a member on the project team and is really supportive of a collaborative PF2020 network in Southland.

3 Advocacy

3.1 Board objective

The Southland Board will advocate strongly for conservation to the local Territorial Authorities and Regional Council.

Planned Board activities, success measures and key milestones

	Action	Status	Progress Commentary
A	The Board will advocate strongly on Regional Resource Management Act 1991 policy documents. Including the Regional Coastal Plan Review		The Board has submitted on all the discussion papers put out on the Regional Coastal Plan Review and had presentations from the Regional Council on the review
B	The Board will submit on relevant, Resource Management Act 1991, consent applications where we have been deemed an interested party.		The Board has submitted on several applications, mainly in the marine space. We considered that the applications as they stood weren't in the best interests on the environment
C	The Board will advocate to reduce light pollution in the night sky in Southland, Rakiura and the Sub-Antarctic Islands.		The Board submitted on the application for a 'Dark Sky' region on Rakiura. There are ongoing proposals that the board will advocate for in the future.
D	The Board will advocate for improved water quality in Southland and the enhancement of our remaining wetlands.		The Board has taken an interest in the Regional Land & Water Plan especially where it relates to the Waiau River and it's dewatering by the Manapouri power scheme.

PART B: GENERAL EXPECTATIONS

4 Working with the Department

4.1 Board objective:

Board members will maintain and develop good working relationships and open dialogue with directors, managers, board support officers and other staff in order to engage strategically in conservation for the region

Planned Board activities, success measures and key milestones

	Action	Status	Progress commentary
A	A good working relationship with the Operations Director, Partnership Director, Statutory Land Manager, Board Support Officer and Operations Managers is critical for the Board to make any worthwhile gains in conservation		The Chair and the Board have worked hard to maintain an excellent relationship with DOC senior management staff. We have farewelled and welcomed two Board Support Officers during the year. Their role is critical to the Board. The Board is pleased with the way the Board and staff functioned under the Covid-19 rules in the later part of the year.
B	Continue relationship building with relevant DOC staff.		Ongoing – Building personal relationships with relevant DOC staff is a priority for the Board.
C	The Board in conjunction with the Department will initiate a process where the Board gains an understanding of the Department's budgetary planning and can have input at a strategic level. This may involve the Department providing an update on the 'thirdly budget reporting' which should include an analysis on how the work programme is tracking against the Department's priorities and outcomes.		The Board has had several discussions and meetings with senior management to determine a process on how to proceed with this directive from the Minister in her letter of expectation. We are still waiting on feedback from the Department

5 Taking account of Ministerial priorities for the Department

5.1 Board objective:

The Board will support Ministerial and local priorities

Planned Board activities, success measures and key milestones

	Action	Status	Progress commentary
A	The Board will give advice to the Department and will advocate where possible on the threat of wilding conifers and other invasive weeds in Southland		The board has given advice on the introduction of ragwort plume moth to the Fiordland National Park for ragwort control. The Board is concerned that the Department does not prioritise sufficient resources to weed control on PCL.
B	The Board will publicly support 'The Battle for our Birds programme in the Southern South Island Region		The Board strongly supports the Tiakina Ngā Manu programme and the use of landscape scale 1080 use to control predators. This seasons work has saved a potential disaster due to the beech mast.
C	The Board will continue to support proposals to find new protected habitat for Kiwi, Kākāpō and Takahē		This ties in with landscape predator control & eradication and the aims of PF2050. There is an urgency to find new habitat especially for Kākāpō & Takahē.
D	The Board will work with the Department, Regional Authorities, Iwi and the community to support the 'Living waters' Programme.		The Board has not been actively involved in this programme. We have yet to determine a role.

5.2 Board objective:

The Board will identify opportunities for building relationships to support the 'Healthy Parks / Healthy People' programme

Planned Board activities, success measures and key milestones

	Action	Status	Progress commentary
A	The Board will work with and advise the Department on how to engage the community to recreate over a full range of the Conservation Estate whilst minimising the impact on biodiversity, landscape and social values.		The Board has spent time dealing with the ramifications of a surge in popularity of cycling, in all its forms. There has been considerable interest in developing biking trails on PCL where it is not consistent with the relevant planning documents.

6 Working with adjoining conservation boards and the Authority

6.1 Board objective:

Board members will liaise with neighbouring conservation boards in order to progress cross boundary issues and other matters of mutual interest.

Planned Board activities, success measures and key milestones

	Action	Status	Progress commentary
A	To have at least one joint meeting with the Otago Board to discuss cross-boundary issues especially Park Plans.		This has not occurred due to the limitations of Covid-19 and that both our Park Plan reviews have been put on hold.
B	The Board to develop a relationship with the West Coast Board		The respective board chairs have had informal conversations. Organising a joint meeting between both Boards has logistical & budgetary problems.
C	The Board Chair to continue to liaise with the new Otago Chair.		The Chair is building a good relationship with the Otago Chair through meetings & telephone conversations

7 Understanding the Board's contribution to giving effect to the principles of the Treaty of Waitangi

7.1 Board objective:

The Board will understand and support the Board's and Department's obligations under Treaty settlements as well as principles under section 4 of the Conservation Act

Planned Board activities, success measures and key milestones

	Action	Status	Progress commentary
A	To have at least one meeting on a marae and be in active discussion with Ngā Runanga ki Murihiku over the Fiordland National Park Management Plan Review.		A very successful noho & Board meeting was held at the Te Rau Aroha Marae in Bluff, where a range of issues were discussed with representatives of the Southern Rūnaka, including Makaawhio.
B	Strengthen the Board's relationship with Makaawhio Rūnaka on the West Coast.		Ongoing – The Board needs good dialogue with Makaawhio over the FNPMP review and the areas north of the FNP
C	To send at least one Board member to Te Pukenga Atawhai		There was no Te Pukenga Atawhai opportunities available in the south this year due to Covid-19

8 Engaging with the community, including raising the profile of the Board

8.1 **Board objective:**

Board members will liaise regularly with other conservation entities, such as district and regional councils, NGOs and community groups, in order to enhance the profile of the Board and pursue good working relationships on issues of mutual interest and concern.

Planned Board activities, success measures and key milestones

	Action	Status	Progress commentary
A	Board members support the mahi of community groups in Southland working on conservation issues such as predator free, catchment and wetland improvement, and climate change.		Ongoing – Individual Board members work across a wide range of community groups in Southland. The Board has had presentations from several groups over the year seeking our support which has been given.
B	The Board works with regional authorities to promote conservation within the community.		Ongoing – The Board has met with the Southland District Council & Environment Southland staff to discuss wilding trees, weeds & the Regional Coastal Plan

8.2 **Board objective:**

Board members will take the initiative to meet with community groups and the general public to gauge community reaction to conservation initiatives planned or implemented by the Department.

Planned Board activities, success measures and key milestones

	Action	Status	Progress commentary
A	The Board will initiate informal community meetings in the region to gauge community reaction to and promote conservation projects.		This has yet to be initiated due to Covid-19 restrictions and busy Board members
B	The Board will hold a public forum at most of its meetings		A Public forum is offered at most of our meetings. Speakers attended 3 sessions
C	The Board will liaise with the Department to make sure Board members attend public functions held by the Department.		This is now working well with Board members trying to be at most DOC public functions.
D	The Board investigates the use of social media to raise the Boards profile.		The Board have had discussions, but no decisions have been made. Currently working on a communications strategy which will include this.

PART C: RISKS AND OPPORTUNITIES

9 Risks from the Board's perspective

A	Hopefully the Fiordland National Park Plan Review will be underway this year. This will lead to increased work for the Board or frustration if the review is further delayed.
B	The implications of the Covid-19 pandemic on the Board's work in the next year have yet to be seen. It could result in an increased workload for the Board with concession amendments. The Board is struggling with the change to virtual meetings and the need to learn new technology skills.
C	There is a lot of work done by Board members outside of our bimonthly meetings. This can lead to Board fatigue.

10 Opportunities for conservation growth

A	The increased government funding from the Covid-19 response package and an increase in funding in general for conservation has huge benefits for natural New Zealand. The Board must be ready to make sure the increased funding is directed to where the maximum conservation gains can be made.
----------	---

Appendix 2 – Southland Conservation Board Guiding Principles

Statement of Guiding Principles for Southland Conservation Board

Conservation Act 1987

Conservation means the preservation and protection of natural and historic resources for the purpose of maintaining their intrinsic values, providing for their appreciation and recreational enjoyment by the public, and safeguarding the options of future generations.

Principle of Preservation and Protection

Decisions of the Southland Conservation Board shall be based on the principle of the preservation and protection of the conservation estate and all its natural and historic resources. Activities on the conservation estate, and any effects on its whenua and its indigenous flora and fauna, shall be considered in the context of this principle.

Principle of Advocacy

The Southland Conservation Board shall use its voice to advocate for the mauri / integrity and wellbeing of the natural environment of Aotearoa New Zealand including, but not limited to, her land, waters, ecosystems and biodiversity.

Principle of Treaty Partnership

The Southland Conservation Board strives to honour its Treaty partnership with Ngai Tahu. In so doing, the Southland Conservation Board shall have particular regard to the voice of Ngai Tahu papatipu runaka ki Murihiku in the decision-making process.

Adopted by the Southland Conservation Board 28 November 2019

This report is presented to the New Zealand Conservation Authority as required by the Conservation Act and distributed to interested parties. Members of the public are welcome to attend Conservation Board meetings. If you would like more information on the Southland Conservation Board please see the website www.conservationboards.org.nz or contact the Board Support Officer, at the Department of Conservation in Invercargill phone (03) 211 2400 or e-mail southlandconservatioboard@doc.govt.nz