

# Southland Conservation Board Te Rōpū Atawhai o Murihiku

## Annual Report

1 July 2017 – 30 June 2018





# Southland Conservation Board Te Rōpū Atawhai o Murihiku Annual Report

1 July 2017 – 30 June 2018

Presented to the New Zealand Conservation Authority  
pursuant to Section 6 (O) of the Conservation Act 1987

Published by  
Southland Conservation Board  
c/- Department of Conservation  
Po Box 743 Invercargill 9840  
[southlandconservationboard@doc.govt.nz](mailto:southlandconservationboard@doc.govt.nz)

ISBN 1172-9198 (print)  
ISBN 1179-4224(online)

**Front Cover:** The Southland Conservation Board and Department of Conservation Staff and Mirror Lakes, Fiordland, December 2017.

## Contents

1.	Chairperson’s report.....	6
2.	Introduction.....	7
3.	Conservation Board Region.....	8
3.1	Conservation features of the Area.....	9
4.	Board Functioning.....	10
4.1.	Board Functions Under Section 6m of the Conservation Act 1987 .....	10
4.2.	Powers of the Board under Section 6n of the Conservation Act 1987.....	10
4.3	Board Functions under the National Parks Act 1980 .....	10
4.4	Board Membership.....	11
4.5	Members Profiles .....	11
4.6	Board Meetings .....	14
4.7	Attendance.....	15
4.8	Board Committees and Representation.....	15
4.9	Representation.....	16
4.10	Training for members .....	17
4.11	Community and DOC Involvement in Board Meetings.....	17
4.12	Field Trips and site inspections .....	18
4.13	Other events .....	19
4.14	Annual Work Plan .....	19
5.	Statutory activity .....	21
5.1	Conservation Management Strategy (CMS).....	22
5.2	Management plans .....	22
5.3	Implementation monitoring .....	22
6.	Advice and Advocacy .....	23
6.1	Liaison.....	23
6.2	Other Conservation Boards liaison .....	23
6.3	New Zealand Conservation Authority liaison.....	23
6.4	Department of Conservation advice.....	24
6.5	Community advocacy and involvement .....	24
6.6	Community visibility.....	24
6.7	District and Regional Councils advocacy and advice .....	24
6.8	Iwi liaison and advocacy .....	25
7.	Conclusion .....	25
	Appendix I –Annual Work Plan .....	27

## 1. Chairperson's report

It has been another active year for the Southland Conservation Board with Board Members dealing with a wide range of conservation issues and successes.

The Board was pleased to see that the Department of Conservation's annual budget was substantially increased this year and hope that the extra money will see large conservation gains.

The Board has now waited over a year for the Department to formally launch the Review of the Fiordland National Park Plan and hopes for an early start in the new year. We are well prepared for the Review as it has been a priority for the Board. The Board has concerns over the rapid growth of tourism on conservation land and especially at Piopiotahi/Milford Sound where there is limited space to grow.

The Board agreed with the Ombudsman's findings on the Ngapunatoru Plateau Glacier landings and looks forward to resolving the issues in the Plan Review.

The Board has also made the Review of the Southland Regional Coastal Plan a priority this year and has commented on the Discussion Papers put out by the Regional Council.

A highlight of the year was the joint meeting with the Otago Conservation Board where Conservation Minister Eugenie Sage joined both Boards for the morning and a wide-ranging discussion followed. I find our close relationship with the Otago Board very valuable.

On the biodiversity front the Board was thrilled to hear that the Antipode Island mouse eradication was a success and is pleased to hear that funding is available for planning for the Auckland Island pig, cat and mouse eradication.

We commend all the community groups out there working in their patch to hopefully realise the Predator Free 2050 goal.

This year has seen some changes in Board members and I would like to acknowledge all the work and wisdom of the members that were farewelled; Gail Thompson, Andrew Bowmar and Lloyd Esler have put into the Board and I hope you have enjoyed your time working for conservation.

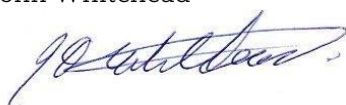
To Peter McDonald and Vaughn Filmer, our new members, and to the rest of the Board thank you for all the time and effort you have put in this year.

The Board was delighted to see our long-standing member Stewart Bull awarded a Queen Service Medal for services to Conservation and Māori.

The Board is developing a good relationship with Aaron Fleming, the new Operations Director for the Southern South Island and I would like to thank all the DOC staff who have worked with the Board over the year.

My special thanks to Donna Shephard and Kathryn Roberts for all their advice and skills that make the Board run smoothly.

Ngā mihi nui,  
John Whitehead



**Chairman Southland Conservation Board**

## 2. Introduction

This is the 27th Southland Conservation Board Annual Report.

The Southland Conservation Board had 11 members for the 2017-2018 year appointed by the Minister of Conservation under the terms of the Conservation Act 1987. There were two new appointments to the Board – Peter McDonald and Vaughn Filmer and one re-appointment – Alison Broad. John Whitehead remained chair, and Andrew Bowmar remained as Deputy Chair.

Conservation Boards are independent advisory bodies, established by statute. The Southland Conservation Board represents the community and offers interaction between communities and the Department of Conservation, within the area of jurisdiction of the Board.

The Board has several statutory roles under various Acts including:

- The recommendation of a Conservation Management Strategies (CMS) to the New Zealand Conservation Authority (NZCA) for approval
- Reporting on the implementation of the CMS
- The approval of Conservation Management Plans
- The recommendation of National Park Management Plans to the NZCA for approval
- Advising the Department of Conservation and NZCA on conservation matters, and proposed changes to the status of nationally and internationally significant land.
- Liaising with Fish and Game Council on conservation matters
- Carrying out other powers delegated by the Minister of Conservation, the Conservation Act or any other Act.

Board functions are outlined in section 6(M) and the powers, which enable the Board to carry out those functions, are under 6(N) of the Act. Boards also have a number of functions under section 30 of the National Parks Act 1980.

Section 6(O) of the Conservation Act 1987 requires conservation boards to provide the NZCA with an annual report as soon as practicable after the 30th June each year. In recognition of this requirement the Southland Conservation Board submits this annual report.

### 3. Conservation Board Region

The Southland Conservation Board's area of jurisdiction covers the area in the map below. The area also extends out to the 12-nautical mile limit with respect to coastal and marine issues, and out to the 200-nautical mile limit with respect to protected species.

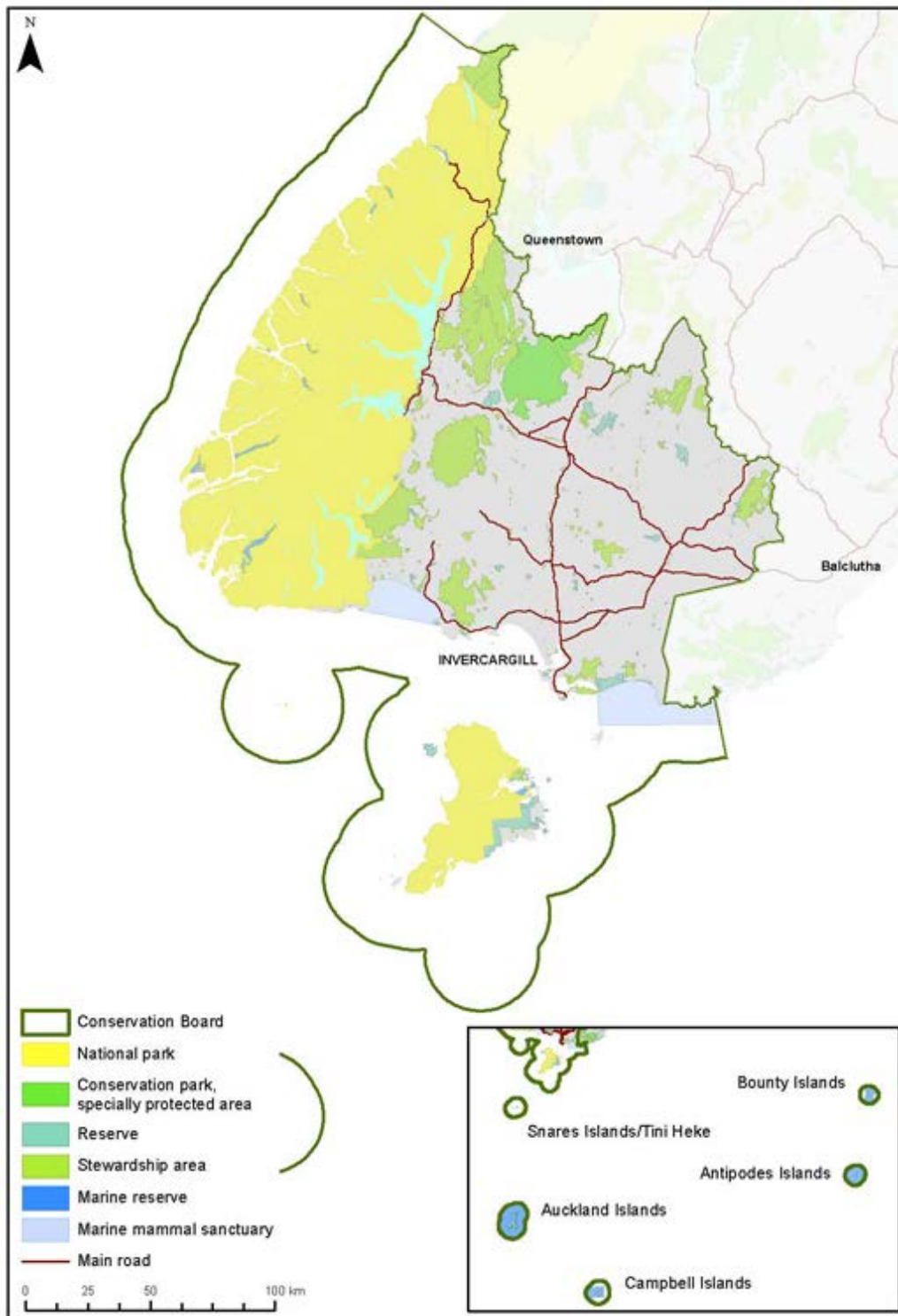


Figure 1. Southland Conservation Board Jurisdiction



Approximately 21.3% of all public conservation land in New Zealand lie within the Region. The large number of issues which are of interest to the Board include: e.g.

- Ecosystem management and the management and enhancement of our many threatened species e.g. kākāpō, Takahē, kiwi, rock wren, snipe and mistletoe,
- Management of recreational and tourist facilities
- Management of historic sites
- Concession activities, including those relating to recreation and tourism activities, grazing, industrial use, beaches, filming, and gravel extraction
- Marine protection

The total area of the Southland Region comprises of 5,523,807 ha. Of this total, approximately 96.8% (5,347,631 ha) is contained within the boundary of the Southland Conservation Board's area of jurisdiction.

### 3.1 Conservation features of the Area

- Fiordland National Park - 1,278,578 ha
- Rakiura National Park - 140,359 ha
- Eyre Mountains/Taka Ra Haka Conservation Park - 65,610 ha
- 69 Scenic Reserves - 26,306 ha
- 15 Recreation Reserves - 317 ha
- 3 Historic Reserves
- 12 Marine Reserves
- 3 Marine Mammal Sanctuaries
- 5 National Nature Reserves
- 1 Ecological Area - Lindsay Ecological Area - 127 ha
- 345 Stewardship Areas - 235,449 ha
- 2 Wilderness areas - Pembroke and Glaisnock Wilderness Area - 141,712 ha
- 2 World Heritage Areas - Subantarctic Islands and Fiordland part of Te Wāhipounamu
- 1 Ramsar site - Awarua Wetland
- 700 Archaeological Historic Sites
- 120 Huts
- 1,200 Km of Track
- 3,600 Structures

## **4. Board Functioning**

### **4.1. Board Functions Under Section 6m of the Conservation Act 1987**

The functions of the Board are:

- 1) To recommend the approval by the Conservation Authority of conservation management strategies, and the review and amendment of such strategies, under the relevant enactments
- 2) To approve conservation management plans, and the review of amendments of such plans, under the relevant enactments
- 3) To advise the Conservation Authority and the Director-General on the implementation of conservation management strategies and conservation management plans for the area within the jurisdiction of the Board
- 4) To advise the Conservation Authority or the Director-General
  - a. On any proposed change of status or classification of any area of national or international importance; and
  - b. On any other conservation matter relating to any area with the jurisdiction of the Board
- 5) To liaise with any Fish and Game Council on matter within the jurisdiction of the Board
- 6) To exercise such powers and functions as may be delegated to it by the Minister under this Act or any other Act

### **4.2. Powers of the Board under Section 6n of the Conservation Act 1987**

- 1) Every Board shall have all such powers as are reasonably necessary or expedient to enable it to carry out its functions.
- 2) Without limiting the generality of subsection (1), each Board may -
  - a) Advocate its interests at any public forum or in any statutory planning process; and
  - b) Appoint committees of members and other suitable persons, and delegate to them functions and powers.
- 3) The power conferred by subsection (2)(a) shall include the right to appear before courts and tribunals in New Zealand and be heard on matters affecting or relating to the Board's functions.

### **4.3 Board Functions under the National Parks Act 1980**

There are two national parks within the Board's region: Fiordland National Park and Rakiura National Park. The Board also advocates for cross boundary issues with Mount Aspiring National Park (which is the responsibility of the Otago Conservation Board).

## 4.4 Board Membership

There were 11 Board members for the reporting year appointed by the Minister of Conservation; one whose term expired on 30 June 2017 and was reappointed for a further 3-year term and two who were new appointments.

The following table lists the membership of Southland Conservation Board between 1 July 2017 and 30 June 2018 and their term of office.

Table 1: Board Membership

Board member	Area	Term start	Term end	Term served
Alison Broad	Invercargill	01/07/14	30/06/20	4 Years
Andrew Bowmar	Gore	01/05/14	30/06/18	4 Years
Fiona Black	Te Anau	01/01/11	30/06/18	7.5 Years
Gail Thompson	Bluff	16/10/06	30/06/18	11.5 Years
John Whitehead	Te Anau	01/01/11	30/06/19	7.5 Years
Lloyd Esler	Invercargill	01/05/14	30/06/18	4 Years
Maurice Rodway	Invercargill	01/07/16	30/06/19	2 Years
Peter McDonald	Dipton	01/07/17	30/06/20	1 Year
Stewart Bull	Invercargill	01/05/09	30/06/19	8 Years
Vaughn Filmer	Te Anau	01/07/17	30/06/20	1 Year
William Watt	Invercargill	01/07/16	30/06/19	2 Years

## 4.5 Members Profiles

### John Whitehead of Te Anau (Chairperson)

*Appointment term: 1 January 2011 to 30 June 2019*

Mr Whitehead is a retired farmer. He is experienced in negotiating environmental outcomes and consensus building. He has a sound understanding of governance issues and conservation law and policies. His lifelong interest is in natural history and conservation, in particular high-country issues, rivers and indigenous fisheries management and Predator Free 2050. He is chairman of the Pomona Island Charitable Trust (an Island restoration project) and a trustee on the Waiiau Fisheries & Wildlife Habitat Enhancement Trust. His outdoor recreation interests are tramping and predator control.

**Fiona Black of Te Anau**

*Appointment term: 1 January 2011 to 30 June 2018*

Ms Black is Manager of Concessions and Consents for Real Journeys. She has a sound knowledge of legislation, and good working relationships with Environment Southland and the Department. Ms Black is well connected to the Te Anau community and knows the challenges with living and working in Milford Sound. She has a strong interest in marine wildlife conservation. Her outdoor recreation interests are tramping, photography, ornithology, natural heritage, conservation and boating.

**Andrew Bowmar of Gore**

*Appointment term: 1 May 2014 to 30 June 2018*

Mr Bowmar is a self-employed farmer, and landowner within Fiordland National Park. He has expertise in land and environment management and advocacy and is involved with the Martins Bay Restoration Group. Mr Bowmar is a founding member of the RB Pilots Association, which negotiated aviation access for recreational pilots. His outdoor recreation interests are aviation, fishing, hunting, and climbing.

**Alison Broad of Invercargill**

*Appointment term: 1 July 2014 to 30 June 2017*

Ms Broad is a consultant in community projects and processes, and a Trustee and National Board Member of Inspiring Communities. She has expertise in strategic thinking, policy development, advocacy, and development and governance for community benefit. Ms Broad has completed consultancy work for the Department. Her outdoor recreation interests are tramping, walking, kayaking, and biking.

**Lloyd Esler of Invercargill**

*Appointment term: 1 May 2014 to 30 June 2018*

Mr Esler is an Invercargill City Councillor, Southland Times columnist, tour guide and science teacher. He has strong knowledge of Southland's conservation issues, and keen interest in its natural environment. Mr Esler has practical experience in pest control, plant and bird surveys, and revegetation projects. His outdoor recreation interests are tramping, botany, ornithology and historic sites.

**Maurice Rodway of Invercargill**

*Appointment term: 1 July 2016 - 30 June 2019*

Maurice has recently retired as the Southland manager of Fish and Game New Zealand, a position he held for 31 years. He has an extensive knowledge of Southland's rivers and natural places. He has a Master of Science degree in zoology and an Advanced Certificate in Sustainable Nutrient Management from Massey University. Maurice is a councillor for Environment Southland and is a certified commissioner with chair endorsement for the Resource Management Act. With his wife Alison he owns property in Otatara and at Manapouri and has interests in biodiversity and outdoor recreation, in particular trout fishing and white-water and surf kayaking.

### **Gail Thompson of Bluff**

*Appointment term: 16 October 2006 to 30 June 2018*

Ms Thompson is a nominee of Te Runanga o Ngai Tahu. She is the Runanga co-ordinator at Te Runanga o Awarua. She has experience in communicating and liaising with tangata whenua, local communities, government agencies and other stakeholder groups. She has an active role in reviews of Southland and Otago conservation management strategies and is familiar with public processes. She has been involved in many trusts and committees and is the current chair of Te Ao Marama Inc. and member of Bluff Community Charitable Trust.

### **William J (Bill) Watt of Invercargill**

*Appointment term: 1 July 2016 to 30 June 2019*

Mr Watt is a planning and resource management consultant based in Invercargill. He has a lifelong association with Rakiura (Stewart Island), where he has enjoyed holidays since the early 1950s. He also has a long association with Murihiku (Southland), where he worked as a planner and senior executive in regional and local government from 1979 to 2010 and since then as a consultant. As a trained geographer and planner, Mr Watt has a keen interest in the conservation values of southern New Zealand, and also an appreciation of the values and needs of people and communities. Mr Watt's outdoor interests include yachting, bush walking and mountain biking

### **Stewart Bull of Riverton**

*Appointment term: 1 May 2009 to 30 June 2019*

Stewart is the deputy chair of Ōraka-Aparima Rūnanga, a member of the Whenua Hou committee, Fiordland Marine Guardians, Chair of the Rakiura tītī committee, and a member of the Rakiura tītī administering body. Stewart has always had an interest and participated in environment and resource management throughout his adult life and has always felt the concept of Kaitiaki Tanga is a responsibility he feels he has an absolute obligation too. Stewart believes many hands make light work and if we all participate then he is sure the world will be a comfortable living space for us and the future generations to come.

### **Peter Macdonald of Dipton**

*1 July 2017 - 30 June 2020*

Together Peter, his wife Kim Spencer-McDonald, daughter Laura (18) and son William (16) farm a 669 ha sheep farm in Dipton in the Caroline Valley. The McDonalds settled in Dipton in 1897 and have been sustainably farming the land ever since. Peter is active in community roles including as a volunteer fireman for just over twenty years. Peter has been involved in conservation at a local level for many years and is excited about continuing making a contribution at a provincial level.

## Vaughn Filmer of Te Anau

*Appointment term: 1 July 2017 - 30 June 2020*

Vaughn Filmer is a teacher of senior geography, outdoor environmental education, junior physical education and social studies at Fiordland College, a Silver Enviroschool in Te Anau. He is also a founding member of 'Kids Restore the Kepler', a conservation and education project in Fiordland National Park. Mr Filmer regularly carries out pest control, biodiversity monitoring and education fieldwork as a part of this project and others. He is the Sir Peter Blake Trust Environmental Educator for 2017. His outdoor interests include trail running, mountain biking, snowboarding, kayaking, pack-rafting, mountaineering, tramping and camping - and he is a rock climbing/abseiling instructor.

## 4.6 Board Meetings

The Southland Conservation Board held seven meetings during the reporting period. Venues for the Board meetings are varied each meeting to ensure a wide coverage and enable members of the public in the district to attend meetings and access the Board.

Table 2: Board meeting dates and location

Board meeting date	Meeting location and venue
28 July 2017	Department of Conservation, Invercargill
6 September 2017	Kelvin Hotel, Invercargill
19 October 2017	Department of Conservation Quarantine Store, Invercargill
8 December 2017	Kingsgate Hotel, Te Anau
27 February 2018	Department of Conservation, Invercargill
16/17 April 2018	St John Meeting Rooms, Queenstown
22 June 2018	Ascot Park Hotel, Invercargill

## 4.7 Attendance

The table below summarises the number of Board meetings attended by members out of the total number of meetings held during the year.

Members attended other meetings and events in their role as Board members, including subcommittee meetings and representative roles.

Table 3: Member Attendance

Board Member	Board meetings	Field Trips	Workshops
Alison Broad	5/7	1/1	0/1
Andrew Bowmar	6/7	1/1	1/1
Fiona Black	7/7	1/1	1/1
Gail Thompson	4/7	0/1	0/1
John Whitehead	6/7	1/1	1/1
Lloyd Esler	4/7	1/1	1/1
Maurice Rodway	6/7	1/1	1/1
Peter McDonald	7/7	1/1	1/1
Stewart Bull	6/7	1/1	1/1
Vaughn Filmer	6/7	1/1	1/1
William Watt	7/7	1/1	1/1

## 4.8 Board Committees and Representation

In July 2017 it was moved at the Board meeting that all sub-committees be closed, with the exception of the Whenua Hou committee.

### 4.8.1 Whenua Hou Committee

This subcommittee was established under section 331 of Ngāi Tahu Settlements Act 1998, as a part of a joint approach to the management of Whenua Hou. The Committee consists of one representative from each of the four Murihiku papatipu rūnanga and four from the Southland Conservation Board.

Table 4: Whenua Hou Committee

Board representatives	Runanga Representatives
Fiona Black	Cyril Gilroy (Waihopai)
Gail Thompson	Estelle Leask (Awarua)
John Whitehead	Tane Davis (Ōraka-Aparima)
Lloyd Esler	Rodney (Hom) Ryan (Hokonui)

## 4.9 Representation

Members of the Board have strong links with a number of community groups in Southland and are active participants in a range of Conservation activities.

Table 5: Summary of the representation

Organisation/Activity	Board Member
Hollyford Conservation trust	Andrew Bowmar
Les Hutchins Conservation Foundation	Fiona Black
Manapouri Doubtful Sound Commercial User Group	Fiona Black
Predator free Rakiura Governance Group	Gail Thompson
South East Marine Protection Forum	Gail Thompson
DOC Community Fund	John Whitehead
Pomona Island Charitable Trust	John Whitehead
Waiau Wildlife & Fisheries habitat enhancement trust	John Whitehead
Waiau working party	John Whitehead
Omaui Tracks Trust	Lloyd Esler
Otatara Landcare Group	Lloyd Esler
Southland Natural History Field Club	Lloyd Esler
Fiordland Marine Guardians	Stewart Bull
Pest Free Rakiura Governance Group	Stewart Bull
Rakiura tītī committee	Stewart Bull
Rakiura tītī Islands administering body	Stewart Bull
South West Endangered Species Charitable Trust	Stewart Bull
Kids Restore the Kepler	Vaughn Filmer



## 4.10 Training for members

Two Boards members attended the Department's Te Pukenga Atawhai course in July 2017 at Te Tauraka Waka a Maui Marae.

The Board also receives regular updates on the Department's activities provided in the status report which is considered at each meeting. Topics covered this year were:

- The Southland Coastal Plan Review process
- The Ngai Tahu Cultural mapping system
- The Boards involvement with concessions
- The Campbell Island / Moutere Ihupuku Marine Reserve Review process
- The Fiordland National Park Management Plan Review process
- Permissions and statutory land management processes
- Million Dollar Mouse Update and Outcomes
- Proposed Auckland Island Eradication
- The Departments strategic approach to visitors
- Ngai Tahu and Papatipu Runanga

## 4.11 Community and DOC Involvement in Board Meetings

Public forums are offered at most Board meeting for members of the community to raise conservation issues with the Board.

The Board welcomes presentations from members of the public and Department staff at the meetings during 2017/18 presentations were received from:

- Fleur Mathews, Environment Southland - The Southland Coastal Plan Review process
- Colin Davidson, Southland Aero Club - Island Hill Airstrip
- Mike Thomas, Recreational Backcountry Pilots Association - Island Hill Airstrip
- Brian Hore, Nokomai Station - Island Hill Airstrip
- Peter Bowmar, Recreational Backcountry Pilots Association - Island Hill Airstrip
- Peter Wilson, Federated Mountain Clubs, - Remarkable National Park Proposal
- Jeff Grant, Milford Governance Group - Milford Sound
- Takerei Norton, Te Rūnanga o Ngāi Tahu - Cultural Mapping
- Kerri-Ann Edge and Dave Crouchley, Department of Conservation - Herds of Special Interest
- Jeff Dalley, Department of Conservation - Monitoring
- Sue Rusford, Pioneer Energy - Monowai Power station
- Tania Wrightson, Department of Conservation - Moutere Ihupuku / Campbell Island Marine Reserve Review
- Andrew Feirerabend, Meridian Energy - Lake Guidelines Review
- Stephen Horn, Department of Conservation - Antipodes Million Dollar Mouse Project and Auckland Islands Eradication
- Ken Murray, Department of Conservation - Southland Coastal Plan
- Robyn Roberts, Department of Conservation - Fiordland National Park Management Plan review
- Jennie Marks, Department of Conservation - Department of Conservation Strategic approach to visitors
- Jason Arnold, Te Runanga o Ngai Tahu - Ngai Tahu involvement in Management Planning
- Paul Wilson, Venture Southland - Rakiura Dark Sky Sanctuary
- Nigel Bradley and Katrin Berkenbusch, Envirostart - Campbell Island Motu Ihupuku Marine Reserve independent review.
- Helen McPhail, Member of public, Wilding Pines

## 4.12 Field Trips and site inspections

The Board only had one field trip in the past year.

Table 6: Subcommittees

Field Trip date	Field Trip destination and purpose
<p><b>7 December 2018</b></p>	<p><b>Manapouri and Lake Te Anau</b></p> <p>The Board has originally planned to travel to Waitutu Lodge in Fiordland, however due to near drought conditions the river was too low, and Board made other arrangements.</p> <p>On the Morning of the 7<sup>th</sup> the Board meet in Te Anau and in two vans travelled on the road between Te Anau and Manapouri looking at various locations and sections of Conservations land.</p> <p>During the afternoon the Board sailed across Lake Te Anau with a local concession holder on <i>The Faith</i> and completed the short walk to Hidden Lakes.</p> <p>The Board was treated to a lovely day in the sun and this was finished off with a barbeque at the Board Chairs house.</p>

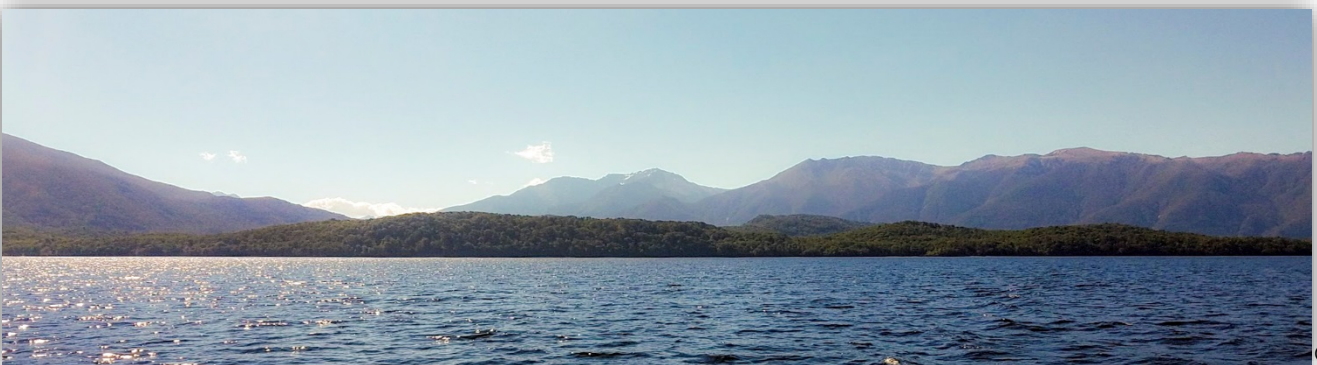
## 4.13 Other events

Table 7: Other events

Event date	Events and purpose
18/21 July 2017	<p>Te Pukenga Atawhai</p> <p>Chairman John Whitehead and Board member Bill Watt attended the Department's course of Te Pukenga Atawhai. This involved living on a marae for three days and being immersed in Maori culture. This was a great opportunity for the Board to build a relationship with Makaawhio Rūnanga.</p>
17 April 2018	<p>Ministers visit</p> <p>The Board held a joint meeting with the Otago Conservation Board and meet with the Minister of Conservation. At this meeting the Boards got to have a question and answer session with the Minister. The Boards also discussed a joint approach going into the Fiordland National Park and Mount Aspiring National Park Management Plan reviews.</p>
21 June 2018	<p>Workshop and Symposium</p> <p>The Board held a workshop to discuss their approach going into the upcoming Fiordland National Park Management Plan review, this included discussions on the Ombudsman report on Ngapunatoru, the Department development proposal for Little Tahiti, and the aspirations and values in the National Park Management Plan for Milford Sound/Piopiotahi. After the workshop the Board attended the Otago University Winter Symposium which focuses on the sustainability of tourism.</p>

## 4.14 Annual Work Plan

Please refer to Appendix 1 for the full Board Annual Work Programme.



**Photos on previous page:**

**Top left:** The Board at Hidden Lakes, Te Anau 7/12/2018 - Photographer: Alison Broad

**Top centre:** Stewart Bill at the wheel of *The Faith* 7/12/2018 - Photographer: Vaughn Filmer

**Top right:** John Whitehead helping with the hāngi at Pukenga Atawhai, Bruce Bay 20/7/2018 - Photographer: Bill Watt

**Top middle left:** The Board receiving a briefing from the crew of *the Faith* 7/12/2018 - Photographer: Alison Broad

**Top middle right:** John Whitehead and Maurice Rodway helping release the sails onboard *The Faith* 7/12/2018 Photographer: Vaughn Filmer

**Bottom middle left:** The Southland and Otago Conservation Boards with the Minister of Conservation and Local DOC staff in Queenstown 17 April 2018 - Photographer: Kathryn Roberts

**Bottom middle right:** The Board leaving *the Faith* and beginning the Hidden Lakes walk, 7/12/2018 - Photographer: Alison Broad

**Bottom:** The view of Lake Te Anau from *The Faith* 7/12/2018 - Photographer: Vaughn Filmer

## **5. Statutory activity**

The Southland Conservation Board is very passionate about advocacy.

In the past year the Board made 11 submissions on various plans in the Southland region. The Board also featured in four articles in the local paper as a result of content discussed at Board meetings.

### **5.1 Conservation Management Strategy (CMS)**

There are two CMSs in the Southland Conservation Board's area: The Southland / Murihiku CMS and the Rakiura CMS.

The Southland / Murihiku CMS was approved and published in 2016, the Rakiura CMS was approved and published in 2011.

The Board receives implementation and monitoring reports on both of these strategies and commented on them then past these reports on to the New Zealand Conservation Authority.

### **5.2 Management plans**

There are two National Park Management Plans in the Southland Conservation Board Area the Rakiura National Park management Plan and the Fiordland National Park Management Plan.

The Fiordland National Park Management Plan review is due to start soon, the Board has put a lot of effort in preparing for the review over the past year.

There was previously Conservation Park Management Plans for the South East Otago region, the Catlins State Forest Park and the Mavora Lakes Park, these were revoked at the Boards June 2018 as these plans became obsolete under the Southland / Murihiku Conservation Management Strategy.

### **5.3 Implementation monitoring**

The Board considered implementation reports on the management plans for the Rakiura National Park, Fiordland National Park and the Southland / Murihiku Region. Members were impressed overall with the progress made and the range and amount of work completed. Once the Board read and approved the reports they were passed on to the New Zealand Conservation Authority.

## 6. Advice and Advocacy

All Board members have responsibility for liaising with other groups when opportunities arise, and some members have specific roles in liaison.

The Board appointed various members to liaise with groups and agencies.

### 6.1 Liaison

Table 7: Liaison persons

<b>Liaison Person</b>	<b>Group, agency or organisation</b>
Bill Watt	Southland Aquaculture Reference Group
Gail Thompson	Fish and Game Southland
Gail Thompson	Predator free Rakiura Governance Group
John Whitehead	DOC community conversation fund
John Whitehead	Fiordland Marine Guardians
Lloyd Esler	Invercargill City Council
Maurice Rodway	Environment Southland
Maurice Rodway	Otago Conservation Board
Peter McDonald	Gore District Council;

### 6.2 Other Conservation Boards liaison

The Southland and the Otago Conservation Boards hold a close relationship through the two liaison members, Maurice Rodway of the Southland Conservation Board and Robyn Shanks of the Otago Conservation Board, through the Chairs John Whitehead of the Southland Conservation Board and Pat Garden of the Otago Conservation Board and the two Board Support Officers Kathryn Roberts for the Southland Conservation Board and Teresa Murphy for the Otago Conservation Boards. The two Boards held a joint meeting in April 2018 in Queenstown and keep in close contact with the Chairs often attending each other's meetings.

### 6.3 New Zealand Conservation Authority liaison

The Southland Conservation Boards NZCA liaison is Jan Riddle who attends most Southland Conservation Board Meetings. The Chair also receives regular letters from the Chair of the NZCA as well as their agendas and minutes.

## 6.4 Department of Conservation advice

The Board provided both formal and informal advice to the Department on the following issues:

- Four Concession Applications
- Drones
- Milford Sound
- Fiordland National Park Management Plan review
- Specially Protected Area Boundaries
- Rakiura Wilderness Area proposal

## 6.5 Community advocacy and involvement

The Board believes that working with conservation organisations and members of the public is very important. Meetings were held in different parts of the region and opportunities for the public to attend Board meetings were advertised.

Members of the public attended the Public Forums at several of the year's meetings and a range of issues were raised. The Board appreciated their input and efforts made to attend the meetings and responded by letter with a response to questions asked or concerns raised.

Public forum issues raised were:

- The Mason Bay Island Hill Airstrip
- Dogs on leashes at Forest Hill
- Bike trails in the Hokonui hill
- Rakiura Dark Sky Sanctuary
- Wilding pines

## 6.6 Community visibility

The Board maintains a presence on the Department's website. Information on being on a Conservation Board was also developed and advertised/displayed at <https://www.doc.govt.nz/about-us/statutory-and-advisory-bodies/conservation-boards/>.

## 6.7 District and Regional Councils advocacy and advice

The Board appreciates the opportunities to meet with representatives of the four local Councils as there are several regional issues in which it is interested.

During the year the Southland Conservation Board meet with members of Southland Regional Council (Environment Southland) regarding the review of the Southland Coastal Plan. The Board also has Maurice Rodway an Environment Southland Councillor and Lloyd Esler an Invercargill City Councillor as members.



## 6.8 Iwi liaison and advocacy

Two members of the Board are nominated by Ngāi Tahu as required under the Ngāi Tahu Settlement Act 1998. The Board had planned to hold a meeting at a local marae in February however this meeting had to be postponed. The Board now has intentions of holding a meeting with local rūnanga at a local marae before the start of the Fiordland National Park Management Plan review.

## 7. Conclusion

In the past 12 months the Board has achieved a lot, they have become well prepared for the upcoming Fiordland National Park Management Plan review. The Board has also put a lot of effort into formalising internal process and upskilling. The Board has learnt a lot in the last 12 months and look forward to another year where they can achieve more. Attached is the Boards workplan for the year ending 30 June 2018 with a full record of what was set out to be achieved and what was achieved.



# Appendix I –Annual Work Plan

## Southland Conservation Board Work Programme

1 July 2017 – 30 June 2018

### Work Programme Overview

This Southland Conservation Board work programme has been developed in response to the Letter of Expectation from the Associate Minister of Conservation. It is structured in three parts, namely:

- **Part A:** Planned Board activities aimed at meeting the regional Work Programme contained in the letter:
  - Review/development/monitoring of statutory management plans including Conservation Management Strategies (Conservation Management Strategy);
  - Advice relating to stewardship land;
  - Other statutory functions for the Board;
  - Advocacy; and
- **Part B:** Planned Board activities aimed at general expectations contained in the letter:
  - working with the Department;
  - taking account of the Ministerial priorities for the Department as contained in the Department’s Four-year Plan;
  - working with adjoining Boards and the NZCA;
  - understanding the Board’s contribution to giving effect to the principles of the Treaty of Waitangi;
  - general engagement with the community, including raising the profile of the Board; and
- **Part C:** risks/issues from the Board’s perspective, and opportunities for conservation growth that are not covered above.

Status indicator

Colour	Indicates
Green	Completed
Yellow	Started and is ongoing
Red	Not started yet

## PART A: REGIONAL WORK PROGRAMME

### 1 Review / development of statutory management plans including Conservation Management Strategies (Conservation)

#### 1.1 Board Objective:

The Board will be involved with the review of the Fiordland National Park Management Plan - *The Board hopes that it will be close to the public consultation phase by the end of the year. This will take a lot of the Board's resources over the coming year. The Board looks forward to working with the Otago Board on cross boundary issues as the Mt Aspiring National Park Plan is also going through a review.*

#### Planned Board Activities, Success Measures and Key Milestones

	Action	Status	Progress Commentary
<b>A</b>	The Board will work with the Department Planners and Ngai Tahu to initiate a review of the Fiordland National Park Management Plan.		Waiting for the Department to formally notify the start of the Fiordland National Park Management Plan review.

#### 1.2 Board Objective:

In conjunction with the Department, the Board will determine priorities for implementation of the Murihiku/Southland Conservation Management Strategy and the Rakiura Conservation Management Strategy and National Park Management Plan

#### Planned Board Activities, Success Measures and Key Milestones

	Action	Status	Progress Commentary
<b>A</b>	The Board with the Department will initiate a process seeking to gazette a wilderness area in the Southern part of Rakiura. This is a milestone in the Rakiura Conservation Management Strategy.		Waiting for the Department of Conservation to initiate formal process.
<b>B</b>	The Board will carry out its statutory role monitoring and reporting on the Southland /Murihiku Conservation Management Strategy to make sure the Department is achieving its goals towards the three-year review.		ongoing

## 2 Stewardship Land

### 2.1 Board Objective:

The Board will provide the Minister and Department with advice on priorities for reclassification of stewardship areas that require increased protection because of their significant conservation values.

#### Planned Board Activities, Success Measures and Key Milestones

	Action	Status	Progress Commentary
A	The Board is awaiting an outcome from the Department's national prioritisation programme on Stewardship land before taking this any further. The issue will arise during the Fiordland National Park Review.		The Te Wāhipounamu SW World heritage Area reclassification is third on the national priority list. (NZCA report)

## 3 Other statutory functions<sup>1</sup>

### 3.1 Board Objective:

The Board will nurture ongoing working relationships with Fish and Game Councils regarding issues of mutual interest within the region

#### Planned Board Activities, Success Measures and Key Milestones

	Action	Status	Progress Commentary
A	The board will continue to develop a relationship with Fish and Game with a Board member attending most Fish and Game meetings.		The Board has a representative attending local Fish and Game meetings and sends an agenda to the chair of Fish and Game before each meeting and the Board Chair talks regularly to Zane Moss

<sup>1</sup> This section should include Board functions relating to statutory functions under section 6M of the Conservation Act

3.2 **Board Objective:**

The Board will advise on proposed changes of status for nationally and internationally important areas, when sought by the Department

**Planned Board Activities, Success Measures and Key Milestones**

	Action	Status	Progress Commentary
<b>A</b>	The Board will continue to advocate and support the increased protection of our marine areas especially the proposed South East Marine Protected Area where appropriate.		Waiting for the Minister of Conservation to approve the recommendations of the forum.

4 **Advocacy**

4.1 **Board Objective**

The Board will pursue all reasonable opportunities to advocate at public forums and in any statutory planning processes

**Planned Board Activities, Success Measures and Key Milestones**

	Action	Status	Progress Commentary
<b>A</b>	The Board will continue to advocate strongly on Regional Resource Management Act 1991 policy documents including the Regional Pest Management Plan, The Water and Land Plan and the Regional Coastal Plan Review.		The Board has commented on the Aquaculture and other discussion papers for the Regional Coastal Plan & is waiting on further relevant discussion papers.
<b>B</b>	The Board will submit on relevant Resource Management Act 1991 consent applications where we have been deemed to be an interested party.		Submitted throughout the year.
<b>C</b>	The Board will continue to advocate for the integrity of the conservation estate in any instances where it may be impacted negatively, subject to resources available.		The Board has advocated throughout the year.

## PART B: GENERAL EXPECTATIONS

### 5 Working with the Department

**Board Objective:**

Board members will maintain good working relationships and open dialogue with Directors, Managers and Board Support Officers in order to engage strategically in conservation for the region.

#### Planned Board Activities, Success Measures and Key Milestones

	Action	Status	Progress Commentary
<b>A</b>	There will be Operation Managers and a director present at most Board Meetings.		There is Operations Managers and the Operations Director present at most Board Meetings.

### 6 Taking account of Ministerial priorities for the Department<sup>2</sup>

**Board Objective:**

The board will support Ministerial and local priorities.

#### Planned Board Activities, Success Measures and Key Milestones

	Action	Status	Progress Commentary
<b>A</b>	The Board will give advice to the Department and will advocate where possible, on the threat of wilding conifers and other invasive weeds in Southland.		ongoing
<b>B</b>	The Board is a strong advocate for 'The Battle for our Birds' Southland is one of the country's strongholds for threatened biodiversity which are vulnerable to the consequences of beech masting.		ongoing
<b>C</b>	The Board will advocate to and support the Department in the eradication of pigs and cats from the Auckland Islands, and work with the Stewart Island Community to make Stewart Island / Rakiura predator free.		ongoing
<b>D</b>	The Board will also support and advocate for the Dusky Sound/Tamatea Conservation and Restoration Plan.		ongoing

<sup>2</sup> This section could include where Boards are consulted on pest control operations

E	The Board is also delighted to support the proposals to find new protected habitat for Kākāpō and Takahē.		ongoing
F	The Board will work with the Department, Regional Authorities, Iwi and the local community to support the 'Living Waters' Programme.		Need to have greater dialogue with parties ongoing
G	The Board will work with and advise the Department on how to engage the community to recreate over the full range of the Conservation Estate whilst minimising the impact on biodiversity, landscape and social values		Waiting for the Fiordland Nat Park plan review to be launched

## 7 Working with adjoining Boards and the NZCA

### Board Objective:

Board members will liaise with neighbouring conservation boards in order to progress cross boundary Conservation Management Strategy and National Park issues and other matters of mutual interest

### Planned Board Activities, Success Measures and Key Milestones

	Action	Status	Progress Commentary
A	To have at least one joint meeting with the Otago Board to discuss cross boundary issues, especially the Park Plans.		A Joint meeting was held in April and the Minister of Conservation attended. Chair has attended several Otago Board Meetings

## 8 Understanding the Board's contribution to giving effect to the principles of the Treaty of Waitangi

### Board Objective:

The Board will understand and support the Board's obligations under Treaty settlements as well as principles under section 4 of the Conservation Act 1987.



## Planned Board Activities, Success Measures and Key Milestones

	Action	Status	Progress Commentary
A	To have at least one meeting on a marae and be in active discussion with Nga Runanga ki Murihiku over the Fiordland National Park Management Plan review.		The meeting proposed in Feb has been postponed until later this year
B	Strengthen the Board's relationship with Makaawhio Rūnaka on the West Coast.		Two members of the Board have met with Makaawhio, while attending Te Pukenga Atawhai.
C	To send at least one member to Te Pukenga Atawhai.		Two members attended. Waiting for another course locally

### 9 Engaging with the community, including raising the profile of the Board

#### Board Objective

Board members will liaise regularly with other conservation entities, such as district and regional councils, NGOs and community groups, in order to enhance the profile of the Board and pursue good working relationships on issues of mutual interest and concern

## Planned Board Activities, Success Measures and Key Milestones

	Action	Status	Progress Commentary
A	Board members will take the initiative to meet with community groups and the public to gauge community reaction to conservation initiatives planned or implemented by the Department.		ongoing
B	The Board will hold a public forum at most of its meetings.		Public sessions occur most meetings
C	The SCB to attend/promote activities to raise the profile of conservation in Southland as well as raising the profile of the Board.		The board invites local reporters to all Conservation Board meetings. On going

## PART C: RISKS AND OPPORTUNITIES

### 10 Risks from the Board's perspective

- A This year is going to be a very busy one for the Board with both the Fiordland National Park Management Plan Review and the review of the Regional Coastal Plan.
- B The rapidly increasing tourist numbers in our region are leading to a spike in the number of concession applications that meet the Board's triggers.
- C Increasing Resource Management Act 1991 consent applications where the Board is deemed an interested party, lead to a lot of work for Board members outside of our bimonthly meetings.

### 11 Opportunities for conservation growth

- A The Board will not be looking for any optional work except for opportunities that will make a big difference for conservation gains in Southland.

This report is presented to the New Zealand Conservation Authority as required by the Conservation Act and distributed to interested parties. Members of the public are welcome to attend Conservation Board meetings. If you would like more information on the Southland Conservation Board please see the website [www.conservationboards.org.nz](http://www.conservationboards.org.nz) or contact the Board Support Officer, at the Department of Conservation in Invercargill phone (03) 211 2400 or e-mail [southlandconservatioboard@doc.govt.nz](mailto:southlandconservatioboard@doc.govt.nz).

