



Otago Conservation Board
Poari Papa Atawhai – ā-rohe ki Ōtago

Annual Report
1 July 2016 – 30 June 2017



Presented to the New Zealand Conservation Authority
pursuant to section 6(O) of the Conservation Act

Serviced by the Department of Conservation
Whakatipu Wai Māori
PO Box 811
Queenstown 9348

Front Cover:
ISBN 1176-6646 (hard copy)
ISBN 1179-2450 (on line)

Table of Contents

TABLE OF CONTENTS	2
INTRODUCTION	3
CHAIRMAN'S REPORT	4
OTAGO CONSERVATION BOARD JURISDICTION	7
BIODIVERSITY	9
MEETINGS	11
FIELD TRIPS	12
SPECIAL EVENTS	12
COMMUNITY INVOLVEMENT	14
SUB - COMMITTEES	14
BOARD FUNCTIONS UNDER THE CONSERVATION ACT 1987	15
BOARD FUNCTIONS UNDER THE NATIONAL PARKS ACT 1980	17
LIAISON	18

Appendices Contents

Appendix 1

OCB Work Plan 2016-2017 30 June 2017

Introduction

This is the eighteenth annual report from the Otago Conservation Board.

The Otago Conservation Board is an independent body established under Section 6(L) of the Conservation Act 1987, to provide interaction between the public and the Department of Conservation at the regional/district level.

Conservation Boards focus on planning and strategic direction. A major responsibility for the Otago Conservation Board is overseeing the Otago Conservation Management Strategy and the Mount Aspiring National Park Management Plan.

Each Board represents the community of interest in the work of the Department and conservation in general within the Board's area of jurisdiction. Its primary role is to advise the Department and the New Zealand Conservation Authority (NZCA).

The functions of Conservation Boards are outlined in Section 6(M) of the Conservation Act 1987 and the powers of Conservation Boards are outlined in section 6(N). Conservation Boards also have a number of functions outlined in section 30 of the National Park Act 1996.

Section 6(O) of the Conservation Act 1987 requires that every Conservation Board provides the New Zealand Conservation Authority with an annual report as soon as practicable after 30 June each year. To this end, the Otago Conservation Board submits this annual report for the New Zealand Conservation Authority's consideration.

Chairman's Report

In the three years preceding the 2017 year, much of the Board's energy was directed towards the Review of the Otago Conservation Management Strategy. Looking forward, the 2018 year is going to be largely taken up with the Mount Aspiring National Park Management Plan Review. 2017, the year just completed had no review process and the Board has been able to dedicate itself to wider topics. As well as fulfilling its statutory role in terms of advising the Department on a range of issues, the Board determined to put additional emphasis on three priorities:

1. To explore the strategic issues behind the huge increase in tourist numbers to our National Parks and to consider at what point limits to visitor activity should be imposed to safeguard intrinsic values.
2. To raise awareness around freshwater biodiversity particularly around the plight of non-migratory galaxiids, many of which are on private land.
3. To support initiatives focussed on wilding conifer control.

Outcomes

Tourism Forum

In October 2016, the Otago Conservation Board partnered with the Southland Conservation Board to convene a very successful Tourism Forum in Queenstown.

Keynote speakers invited:

- Lou Sanson, Director General, Department of Conservation; Sandra Cook, Ngāi Tahu; René de Monchy, Tourism New Zealand; Chris Roberts, Tourism Industry Aotearoa; Peter Wilson, Federated Mountain Clubs; Dave Bamford, Dave Bamford Tourism; Gavin Walker, Department of Conservation.

Invited attendees included representatives from local Rūnanga, tourism operators, the Civil Aviation Authority, the Milford Development Authority, local District Councils, Federated Mountain Clubs, New Zealand Alpine Clubs, Fish and Game and the Tourism Export Council. Local members of parliament and senior managers and planners from the Department of Conservation also attended. Amongst the many themes identified, two significant outcomes emerged:

1. A recognition of the importance of Federated Mountain Clubs, Ngāi Tahu and Tourism Industry Aotearoa working together towards collective outcomes.
2. The significance of achieving consistency across neighbouring National Park Plans, such that an eventual overarching management plan for the whole of Te Wāhipounamu, the South West New Zealand World Heritage Area, embracing the four National Parks - Fiordland, Mount Aspiring, Westland Tai Poutini and Aoraki/Mount Cook, could be developed.

A summary of the proceedings was produced to assist the two Boards in their deliberations over the reviews of the Fiordland and Mount Aspiring National Park Plans.

Freshwater Biodiversity

In September 2016, the Board met with the Kyeburn Water Users Group, to discuss initiatives around managing the protection of the rare species of galaxiids found in the upper reaches of the Kyeburn catchment. The Board also communicated with the Otago Regional Council and other farmer groups to further advocate on behalf of these threatened species and to raise awareness.

Wilding Conifers

In November 2016, the Board met with both the Central Otago Wilding Conifer Control Group and the Wakatipu Wilding Conifer Control Group to inspect the scale of the threat posed by wilding conifers and to add support to the efforts the local groups, the Regional Council and the Government are making to arrest conifer spread.

Relationship with Ngai Tahu

Considerable effort has been put towards developing a good working relationship with local Rūnanga. Good progress has been made and I am hopeful that the Board and the seven southern Rūnanga along with the Makaawhio rūnanga which also has a direct interest in the Mount Aspiring Park, will have an opportunity to discuss matters of interest as the first step in the Review of the Mount Aspiring National Park Management Plan. The first meeting is scheduled for November 2017.

Conservation Management Strategy Reporting

The current Otago CMS became operative in September 2016 and the Board has now adopted an agreed reporting framework. Individual Board members have been allocated a priority milestone and have been given the responsibility to liaise with appropriate Department staff regarding progress. A preliminary report from the Department has been tabled setting out the status for each of the CMS 3 year milestones with the intention to inform the Board throughout next year on any milestone concerns as they arise. A full report will be tabled at the end of each year.

Statutory Management and Submissions

Providing advice to the Department on concessions, statutory planning documents and putting together submissions on legislative change and Territorial Authority Plans, is a regular part of the Board's role. Submissions were made on:

- A priority list of Stewardship Land areas in Otago to be considered for an increased status of protection was submitted to the Department
- Threats to New Zealand Sea Lions/Rāpoka Management Plan
- Draft Kiwi Recovery Plan
- South East Marine Protected Areas (SEMPA) Forum Proposal

The Forum Convenor, Maree Baker-Galloway was invited to present to the November 2016 Board meeting. Subsequently the Board wrote a submission strongly advocating for increased protected areas that had sufficient size to be effective. The submission was also sent to the Hon Maggie Barrie, Minister of Conservation. The Board awaits the outcome from the protracted deliberations of the Forum with keen interest.

Advocacy

In May 2017, the Board called a meeting between the Central Otago District Council (CODC) Rooding Managers, the Central Otago (CO) 4-wheel Drive Club and the Department to discuss the severely deteriorating condition of some high-country tracks across Conservation land. A flagrant disregard for the impact of their vehicles on vulnerable areas by a few cowboys is compromising access for other users. The CO 4-wheel Drive Club is also very concerned about the few rogue users and is keen to work with the Department and the CODC to determine a track maintenance priority list and to raise awareness. The Board will maintain a dialogue with the parties to ensure progress is being made.

Relationships with other Boards

The NZCA convened Board Chairs' Conference provides a very welcome opportunity to learn from the experiences of other Board Chairs and to discuss issues with the Associate Minister of Conservation, Nicky Wagner, Lou Sanson Director General of the Department and Warren Parker, Chair of NZ Conservation Authority. The OCB Vice Chairman, Vance Boyd attended the August 2016 Conference in my absence.

The four Chairs from the Otago, Southland, Canterbury/Aoraki and West Coast Tai Poutini Boards come together twice a year with the respective Operations Directors at a meeting convened by the Partnerships Director, Barry Hanson. The Chairs write the agenda and it provides a valued opportunity to discuss issues of mutual interest. It enables any areas of concerns to be aired and helps to strengthen the relationship between Boards and the Department. The partnership developed around the Tourism Forum and the regular contact we have with each other is contributing to an excellent support network.

Glacier Landings in the Mount Aspiring National Park

The dramatic increase in demand for glacier flights prompted the Department to consider a partial review of the Mount Aspiring National Park Management Plan to address whether the number of landings could be raised beyond the prescribed number within the current Plan. After considerable deliberation, the Board advised that there should be no partial review and that the matter be addressed within the full review programmed to commence in the 2018 year. In the meantime, an accurate database of aircraft landings, including flightpaths, needs to be gathered to more reliably inform decision making.

Board Administration and Support

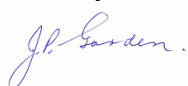
The Board Support Officer, Sarah Gerard resigned from the position she had held for a year. The Board is very sorry to lose Sarah and her cheerful presence and it is most grateful for the contribution she has made over that period. An appointment process is under way for a replacement for Sarah - in the meantime the Board is very pleased to have Kathryn Roberts BSO for the Southland Board, filling in.

John Roberts, Statutory Manager, Queenstown provides wonderful support for the Board, not only with his Departmental knowledge and experience but also his readiness with information and his access to a wide network both within the Department and outside.

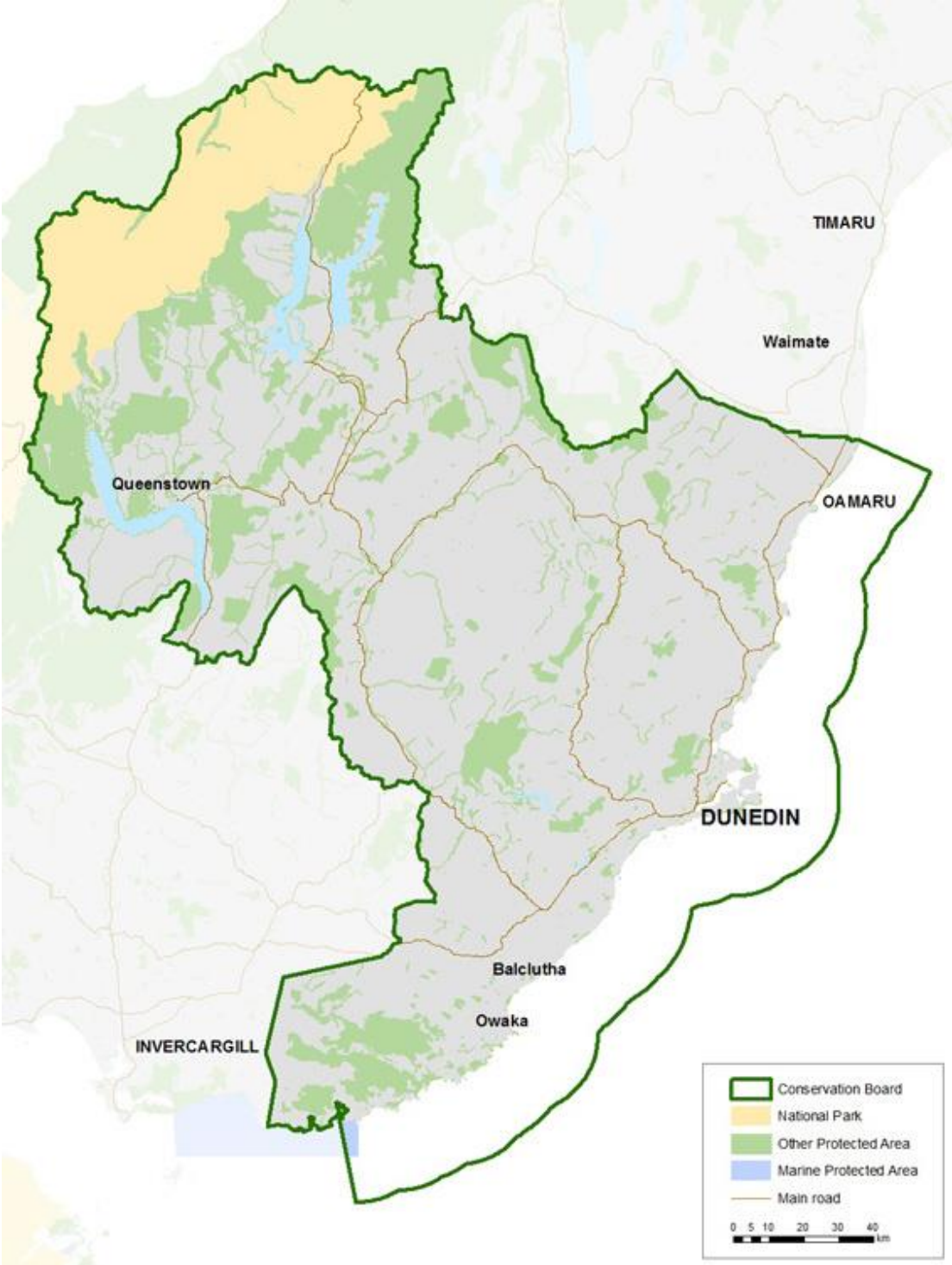
The Board

Regretfully, Ann Lockhart decided not to seek re-appointment due to her workload with other responsibilities, so it was a great relief to have Andrea Ludemann re-appointed to the Board. It was also good to have a second representative from Ngai Tahu, Ranui Ellison-Collins, finally appointed. Dave Vass from Wanaka was also appointed as a new member, bringing Board membership back to its full complement of nine. A warm welcome to the two new members and a sincere thank you to other Board members for your contribution during the year. It has been a very busy but I hope a satisfying time also for you.

Finally, I wish to thank the Department staff with whom the Board regularly connects. The relationship between the Board and the Department is one of respect and consideration which is strongly supportive but which still allows an independent and where necessary, a contrary view to be expressed by the Board.



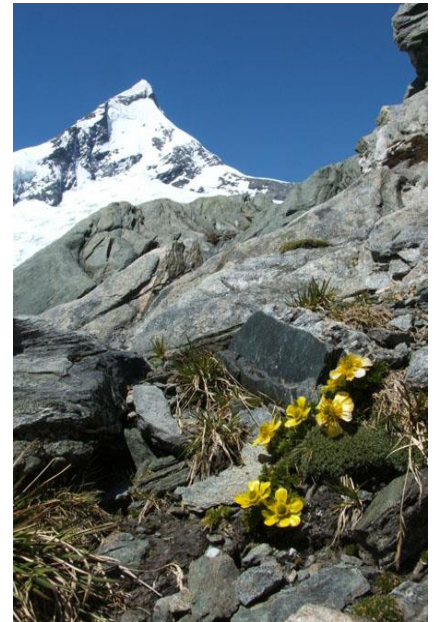
Otago Conservation Board Jurisdiction



There are several areas of significant importance within the Board’s jurisdiction, these include; Mount Aspiring National Park, Catlins Coastal Rainforest Park, Te Papanui Conservation Park, Hāwea Conservation Park, Oteake Conservation Park, Otago Central Rail Trail, Coronet Peak / Remarkables / Treble Cone.

- **Mount Aspiring National Park**

This park comprises 355,531 hectares, consisting of 192,855 hectares in the Otago district and 162,676 hectares in the West Coast Tai Poutini district.



- **Catlins Coastal Rainforest Park**

This is a collective name for the Catlins Conservation Park of 50,693 hectares, consisting of 32,933 hectares in the Otago district, 17,760 hectares in the Southland district, and numerous reserves and conservation areas located along or near the Catlins coastline.

- **Te Papanui Conservation Park**

This park comprises 20,591 hectares of tussock grassland, wetlands, shrublands and silver beech forest remnants on the Lammermoor and Lammerlaw Ranges, and is located in the north-west of Lake Mahinerangi near Lawrence.

- **Hāwea Conservation Park**

The Hāwea Conservation Park covers about 105,000 hectares of public conservation land around Lake Hāwea and the Hunter River, as well as areas on the McKerrow Range near Makarora. Large areas in the park are covered with native beech forest and shrublands.

- **Oteake Conservation Park**

About 65,000 hectares of public conservation land on the St Bathans, Hawkdun, Ida, Ewe and St Mary's Ranges and parts of the upper Manuherikia Basin. The vegetation is dominated by tussock grasslands.



- **Otago Central Rail Trail**

This very popular recreational facility for cyclists, walkers, mountain bikers and horse riders follows the route of the former Otago Central Branch railway line for 150 kilometres between Clyde and Middlemarch. It is now one of the official New Zealand Cycle Trails.

- **Coronet Peak / Remarkables / Treble Cone**

Parts of the public conservation land at these sites are occupied by commercial ski fields that are well-known for winter recreational activities, but are also popular summer destinations.

Biodiversity

There are many significant or well-known indigenous species that can be found within the Board's area of jurisdiction. Some of these include: Otago Skink (Mokomoko), Grand Skink (Mokomoko), Jewelled Gecko (moko kākāriki), Royal Albatross (Toroa), Haast Tokoeka, Yellow Eyed Penguin (Hōiho), Buff Weka, Yellow Head (Mōhua), South Island Robin (Kakaruai), Stewart Island Shag (Kōua), New Zealand Sea Lion (Rāpoka), Hector's Dolphin (Upokohue), New Zealand Fur Seal (Kekeno), Southern Right Whale (Tohorā), Long tailed bats (Pekapeka), Galaxiids (Inanga).

 <p><i>Rāpoka</i></p>	 <p><i>Haast tokoeka</i></p>	 <p><i>Mokomoko</i></p>
 <p><i>Moko kakariki</i></p>	 <p><i>Hectors tree daisy</i></p>	 <p><i>Peripatus</i></p>
 <p><i>Hoiho</i></p>	 <p><i>Mohua</i></p>	 <p><i>Chafer beetle</i></p>
 <p><i>Nevis Galaxias</i></p>	 <p><i>Longjaw Galaxias</i></p>	 <p><i>Roundhead Galaxias</i></p>

There are also invertebrates, freshwater fish and various native plants such as: Hector's tree daisy (*Olearia hectorii*), Rare Grass (*Simplicia laxa*), Rare Cresses (*Lepidium kirkii* and *Lepidium sisymbrioides*, *Pittosporum patulum*).

Various non-migratory Galaxias, are unique to Otago, a number of which have threatened status; the Cromwell Chafer beetle (*Prodontria lewisii*); Freshwater Crayfish (Kōura).

Otago Conservation Board Membership

The Otago Conservation Board has nine members, two of whom are appointees of Te Rūnanga o Ngāi Tahu, in accordance with section 273 of the Ngāi Tahu Claims Settlement Act 1998.

The members are shown in the table below

Name	Term Started	Term Ending	From
Jim Williams*	10/11/2005	30/06/2018	Dunedin
Pat Garden	01/05/2014	30/06/2019	Millers Flat
Vance Boyd	01/05/2014	30/06/2018	Queenstown
Anna Carr	01/05/2014	30/06/2018	Dunedin
Bruce Jefferies	01/05/2014	30/06/2018	Wanaka
Ann Lockhart	01/07/2014	30/06/2017	Wanaka
Andrea Ludemann	01/07/2014	30/06/2020	Waitaki
Robyn Shanks	01/07/2016	30/06/2019	Owaka

**Ngāi Tahu Representative*

Newly appointed members for term starting 01/07/2017

Name	Term Started	Term Ending	From
Ranui Ellison-Collins*	01/07/2017	30/06/2020	Dunedin
Dave Vass	01/07/2017	30/06/2020	Wanaka

**Ngāi Tahu Representative*

Meetings

The Otago Conservation Board held five meetings during the reporting period.

The location of Board meetings is usually rotated around the region, to enable as many communities and members of the public as possible to have access to Board members through the public forums at each meeting.

The table below, shows a list of all meetings and where they were held.

	Date	Location
1	30 June and 1 July 2016 <i>(This meeting falls in two reporting years)</i>	Dunedin
2	9 September 2016	Danseys Pass
3	22 November 2016	Queenstown
4	21 and 22 February 2017	Wanaka
5	2 May 2017	Clyde

The table below, shows a list of all Board members and the number of meetings they each attended.

Name	Area	Meeting attended
Jim Williams*	Dunedin	3/5
Pat Garden	Millers Flat	5/5
Vance Boyd	Queenstown	5/5
Anna Carr	Dunedin	4/5
Bruce Jefferies	Wanaka	4/5
Ann Lockhart	Wanaka	5/5
Andrea Ludemann	Waitaki	5/5
Robyn Shanks	Owaka	5/5

Field Trips

Three field trips were organised for the year. The Kyeburn meeting in September 2016 included a field trip to view the rare species of *Galaxia* found in the Kyeburn catchment. However, snow forced the abandonment of the field trip and an indoor discussion with the Kyeburn Water Users Group was held instead.

A field trip accompanying the November 2016 meeting focused on Wilding Conifers. The Board was hosted by the Central Otago Wilding Conifer Control Group project manager, Phil Murray and was able to inspect the spread of Wilding Conifers above the town of Alexandra. The Board then travelled to Queenstown and drove up the Skipper's Road to the site of the Mount Aurum Station Homestead and the Skipper's School. Grant Hensman, co-Chair of the Wakatipu Wilding Conifer Control Group and Geoff Owen, Operations Manager DOC Queenstown outlined the scale of the wildings threat to the area and the extensive spraying programme already undertaken by the very active voluntary group.

In February 2017, a field trip was organised to visit the Isobel and Forbes Glacier helicopter landing sites in the Mount Aspiring National Park. Considerable helicopter activity across the National Park is being driven by the demand from tourists to land on glaciers and the Board wished to understand the flight paths being taken in order to assess the impacts prior to considering the Review of the Mount Aspiring National Park Management Plan. The Helicopter Line was contracted by the Board to fly Board members along the flight path from the Queenstown Airport to the landing sites on the Glaciers. This enabled Board members to familiarise themselves with this significant concession activity within the National Park.

Special Events

The Otago and Southland Conservation Boards' Tourism Forum

The Otago and Southland Boards partnered in convening a meeting to hear a diverse range of views from a selection of interested parties and local iwi about whether visitor growth can continue to expand or if limits have already been reached. The presentations from the key note speakers and the contributions from the attendees have given both Boards a deeper insight into the issues of visitor activity in the National Parks and will be used to inform the Boards in their deliberations over the Reviews of the Management Plans of the Mount Aspiring and Fiordland National Parks. Guest speakers were; Lou Sanson - *Director General, Department of Conservation*, Sandra Cook - *Ngāi Tahu*, Rene De Monchy - *Tourism New Zealand*, Chris Roberts - *Tourism Industry Aotearoa*, Gavin Walker - *Department of Conservation*, Dave Bamford - *Dave Bamford Tourism Consultants*, Peter Wilson - *President, Federated Mountain Clubs*.

Attendees included representatives from local rūnanga, tourism operators, civil aviation authority, Milford Development Authority, local District Councils, Federated Mountain Clubs, New Zealand alpine clubs, Fish and Game, Tourism Export Council, local Members of Parliament, senior managers and planners from the Department of Conservation.



Above Picture: Pat Garden - Otago Conservation Board Chair and John Whitehead - Southland Conservation Board Chair listening to presentations at the Tourism Forum.

Community Involvement

Throughout the 2016/17 year the Board welcomed presentations at its meetings from a number of different organisations and individuals.

- Maree Baker Galloway - South East Marine Protection Forum
- Niall Watson - Otago Fish and Game Council
- Mark Quickfall - The Helicopter Line
- Grant Bissett - The Helicopter Line
- Rachael Moore - Tourism Industry Association
- Alison Stewart - Member of the public
- Murray Hasler - Central Otago District Council
- Julie Muir - Central Otago District Council
- Brent Wilson - Central Otago 4WD Club
- Neil Connelly - Central Otago 4WD Club
- Roger Marshall - Central Otago 4WD Club
- Derek Jones - Central Otago 4WD Club
- Janet Ledingham - Forest and Bird
- Hamish & Nick MacKenzie - Kyeburn Water Users Group
- Phil & Basil Smith - Kyeburn Water Users Group
- David Greer - Kyeburn Water Users Group

Sub - committees

Land & Water Committee

The purpose and function of this committee is to draft submissions on Tenure Review and take part in statutory consultation on Land and Water matters for Board sign-off.

The members of this committee are:

- Vance Boyd
- Bruce Jefferies
- Andrea Ludemann
- Anne Lockhart

Board Functions under the Conservation Act 1987

“To recommend the approval by the Conservation Authority of Conservation Management Strategies, and the review and amendment of such strategies under the relevant enactment of 6M(1)(a)”

During the 2016/17 year, the Otago Conservation Board celebrated the launch of the new Otago Conservation Management Strategy on the 1st of September 2016.

“To approve Conservation Management Plans, and the review and amendment of such Plans, under the relevant enactments 6M(1)(b)”

The Otago Conservation Board have started to prepare themselves in anticipation of the Mount Aspiring National Park Management Plan review.

“To advise the Conservation Authority or the Director General on any proposed change of status or classification or any area of national importance 6M(1)(d)(i)”

No areas of National or International importance have changed status or classification during the 2016/17 year. In July 2016 a list of five sites was put forward by the Board for consideration as part of a national programme for stewardship land reclassification.

“Any other Conservation matter relating to any area within the jurisdiction of the Board 6M(1)(d)(ii)”

The Department did not seek advice on any other matters during the 2016-2017 year.

Conservation matters as previously recorded in this report:

“To Liaise with Fish & Game Council’s on matters within the jurisdiction of the Board 6M(1)(f)”

Liaison has continued with a Board member attending Fish and Game Council meetings. Niall Watson from the Fish and Game Council Otago attended the November 2016 meeting and made a presentation.

“To exercise such powers and functions as may be delegated to it by the Minister this Act or any other Act 6M(1)(g)”

The Minister of Conservation has not delegated additional powers or functions to the Board under this subsection of the Conservation Act 1987.

“Every Board shall have such other functions as are conferred on it by or under this act or any other act 6M(2)”

The Board ensures that its decisions and recommendations are consistent with the requirements in section 4 of the Conservation Act 1987.

Section 6.1 “Every Board shall have all such powers as are reasonably necessary or expedient to enable it to carry out its functions 6N(1)”

The Otago Conservation Board recognises the powers granted under the Conservation Act 1987 and seeks to apply those powers in a considered and positive manner. The Department has been supportive of the Boards role, and acknowledges the independence and the value the deliberation of the Board can offer to the Department.

Section 6.2 “without limiting the generality of sub-section (1) of this section each Board may 6N(2)

Advocate its interest at any public forum or in any statutory planning process 6N(2)(a)”

Territorial Local Authorities within the region include; Clutha, Queenstown Lakes, Central Otago and Waitaki District Council, Otago Regional Council and the Dunedin City Council. The relevant liaison members and the Statutory Manager monitor legislative changes, district plan reviews and resource consent application, and refer issues to the Board where conservation values are threatened.

The following were brought to the Board during the 2016-17 year:

Submissions as previously noted in the Chairman’s Report

“Appoint committees from members and other suitable persons and delegate to them functions and powers”

Each committee of the Board has, in accordance with its delegated powers the ability to investigate issues, draft submission and do other similar preparatory work, before referring it to the full Board ratification.

“The conservation Authority may consult any Conservation Board about the draft of a general policy after received submissions on it 17B(3)(1)(ii)”

There have been no general policies put in place since the General policy for National parks and the Conservation General Policy in May 2005.

“Draft freshwater fisheries management plans are to be prepared by the Department in consultation with the Conservation Boards affected by them 17K(1)(a)”

No such plans affected the Otago Conservation Board jurisdiction in 2016/17.

“The Minister of Conservation shall consult the relevant Conservation Board about any proposal made by a Crown Land disposal agency to reduce the width or, or provide an exemption from, a marginal strip, and on being satisfied this it is reasonable in the circumstances to do so, the relevant conservation Board may request the Minister to publicly notify the proposal 24B(a)”

No such applications were considered by the Board in 2016/17.

“Any Board may co-opt for such term as it thinks fit any suitable person or persons to be a member or members of the Board. 6Q(1)”

There were no co-opted members in the 2016/17 Board.

Board Functions under the National Parks Act 1980

The Board is responsible, in conjunction with the Department, for preparing draft reviews of management plans, for hearing and deciding on public submissions on any draft review and for recommending any review to the New Zealand Conservation Authority for approval sections 30(a) and 45-47.

Mount Aspiring National Park (MANP) is within the Otago Board's jurisdiction. A Management Plan for the Park is normally reviewed every ten years with the current Plan being approved in June 2011. In order to align this Plan with the neighbouring Fiordland National Park Management Plan expiring in 2017, the Tititea/MANP National Park Management Plan is to begin a review in the 2017/18 year.

“In addition to the functions specified elsewhere in this Act or any other Act, the functions of each Board shall be to give advice to the Director-General or the Authority on any other matter relating to any national park within the jurisdiction of the Board. 30(1)(f)(iii)”

The Otago Conservation Board continues to have an ongoing interest in the management of the Mount Aspiring National Park, and advises the Department where required on concessions and other matters. The Department sought the advice of the Board on a proposal to increase the number of permitted landings on the Forbes and Isabel Glaciers as set out in the current Mount Aspiring National Park Plan. The Board advised the Department that as the review of the Management Plan was imminent, it was advisable to allow that process to determine the appropriate number of landings. No amendments were made to the Mount Aspiring National Park Plan in the 2016/17 year. The review of the Mount Aspiring National Park Management Plan was due to start in early 2017 however there has been no formal start to the review.

Liaison

The Board has appointed various members to liaise with outside agencies as set out in the below table:

Organisation	Liaison Person
Southland Conservation Board	Robyn Shanks
Queenstown Lakes District Council	Bruce Jefferies
Clutha District Council	Robyn Shanks
Canterbury Aoraki Conservation Board	Anna Carr
West Coast Tai Poutini Conservation Board	Vance Boyd
Central Otago District Council	Pat Garden
Waitaki District Council	Andrea Ludemann
Otago Regional Council	Pat Garden
Dunedin City Council	Jim Williams
Fish & Game Council	Bruce Jefferies

Other Conservation Boards

The Boards immediate neighbours are the Canterbury Aoraki, West Coast Tai Poutini, and Southland Conservation Boards. The Chairperson, liaison members, Statutory Managers, Operations Directors and the Board Support Officers ensure there is communication between the Boards by distributing minutes, and holding combined meetings to discuss comment issues and issues of concern. The Otago and Southland Conservation Boards co-hosted a tourism forum in Queenstown in October 2016.

The Public

The Board has continued to involve the community in its work, and holds regular meetings around the region and the public is encouraged to participate in public forums at these meetings. This is seen as successful, with a number of people from local communities taking the opportunity to bring their concerns to the Board. The Board seeks to represent the public interests and continues to strive to learn the views of the public.

The Board would like to encourage more people to attend the meetings and take advantage of the opportunity to address the Board during the public forum.

City, District and Regional Councils

The Board has continued to develop a good relationship with councils and has liaison members for all relevant councils in their area. The relevant Mayor of the area where the Board is meeting is always invited to attend the meeting.

Iwi

Ngāi Tahu nominates two members of the Board. They are individually selected by their papatipu Rūnanga, and their status as representative of local hapū is endorsed by Te Rūnanga o Ngāi Tahu. Currently Dr Jim Williams is the sole Ngāi Tahu representative. Ranui Ellison-Collins has been appointed to the Board with her term to commence on 1 July 2017. This will bring the number of Ngāi Tahu appointees on the Board, back up to two.