



Te Rūnanga Whakauka o Kahurangi ki Kaikōura

NELSON MARLBOROUGH CONSERVATION BOARD

Herea kia Kōtahi - Working Together



Nelson Marlborough Conservation Board Annual Report 2022-2023

Annual Report of the Nelson Marlborough Conservation Board Te Rūnanga Whakauka o Kahurangi ki Kaikōura

For the period 1 July 2022 to 30 June 2023

*Presented to the New Zealand Conservation Authority / Te Pou Atawhai Taiao O
Aotearoa pursuant to section 60 of the Conservation Act 1987*

*Cover photo: Nelson Marlborough Conservation Board members and DOC staff with Brook
Waimarama Sanctuary staff in February 2023 -*

*Back cover photo: Nelson Marlborough Conservation Board and West Coast Tai Poutini Board
members with DOC staff at Ōpārara, Kahurangi National Park, October 2023*

Published by

Nelson Marlborough Conservation Board
c/- Department of Conservation
Private Bag 5
Nelson

www.conservationboards.org.nz
nelsonmarlboroughboard@doc.govt.nz

ISSN 1176-7065 (print)

ISSN 1178-4113 (online)

August 2023

DOC-7394707

LETTER FROM THE CHAIRS

Edward Ellison
Chairperson, New Zealand Conservation Authority
PO Box 10420
Wellington 6143

Tēnā rā koe Edward,

E te tutahi ngā mihi ki atu ngā mate kua ngaro i te pō, haere kua wheturangitia o Puanga e. Kia koutou ngā hunga ora Mānawatia a Matariki, tēnā rā koutou kātoa. Ngā iwi kaitiaki o te motu nei me ngā rangatira o Te Papa Atawhai tēnei te mihi kia koutou. E te minita tēnei te mihi kia koe, me ngā kaimahi o Te Papa Atawhai tēnā rā koutou kātoa. Kei te mihi mātou e te kaupapa hirahira, e tiaki ana mātou ngā taonga tuku iho ki Te Tauihu o te Waka a Māui.

Nelson Marlborough Conservation Board are continuing to work with the newly adopted Tangata Tiriti co-chair model arrangement. We farewelled Murray Poulter in 2022 and Nick Eade has come on board as Co-Chair alongside Aneika Young. We also acknowledge our three outgoing members Trevor Hook, Raymond Smith (Ngāti Kuia) and Emma Newcombe for their mahi over the last year and we welcome the appointment of our new members Brian McGurk, Jen Skilton and Serean Adams.

We continue to receive valuable knowledge and input from our Pou Tairangahau and Treaty Settlement Ranger at meetings, including presentations on issues such as Te Tiriti and settlements, coupled with knowledge of Te Tau Ihu iwi and the Department. The Board's Iwi Komiti continues to play a key role in the commitment to Te Tiriti o Waitangi and lead the Board Te Ao Māori capability of iwi history, marae kawa, tikanga, engagement and iwi DOC related kaupapa. Meetings are held on marae or in iwi spaces with a focus on the region we meet in, and iwi are invited to present their kaupapa and/or to sit in our hui if they are interested.

Remuneration for iwi involvement on the board, sub-committees and whānau, hapū and iwi members who are working with DOC on the ground needs to be appropriately resourced. As a result, the iwi Komiti have discussed where the relationship sits with iwi? On the Board, at the iwi GM, CEO level, with hapū on the ground? How should this happen for the Department? We have iwi members on our Board and the appointment process sits with the Minister for their roles e.g. 'waka approach' to gain adequate representation across our rohe. The board acknowledges the role of iwi on these Boards, and we encourage further support and resourcing for iwi across all levels of the Department.

A significant priority for the Board is the on-going concerns about our current outdated CMS, which is one of the oldest in the country and aware of the EDS planning review is in progress. In April of this year the Board Chair and iwi Komiti met with the Te Tauihu iwi chairs and the Honourable Minister Willow Jean Prime, local dignitaries, and DOC kaimahi. The Board expressed their approach to work with iwi to develop a working relationship to tackle a suite of kaupapa; the re-classification of Stewardship Lands, the Biking Review and our outstanding CMS which all require iwi engagement. At the time the iwi chairs appointed Hemi Sundgren (Ngāti Tama CEO and Corey Hebbard (Rangitāne CEO) to develop a spatial planning process with the NMCB Board chair Aneika Young and the Board's iwi Komiti. This would strategically align and support all the DOC kaupapa that require iwi engagement. This approach is in-line with the EDS recommendations getting the relationship right, tino-rangatiratanga and supports the planning framework review needs, to be reformed under that thinking and we look forward to progressing that work.

The Board are very concerned about the wilding pines funding cuts on the Molesworth and continual rise and impacts from high numbers of the ungulates throughout the region devastating our forests and biodiversity with hotspots across the Marlborough region. Our rohe has also experienced significant climatic storm events such as the rain in August 2022. As a result, we have seen some major impacts across the region, with DOC support and extra cost and stress for the Department and impacts on the community through road closures, loss of property, land-slides. The Board remain aware of climate change issues, emergency management and our responsibilities to reducing our carbon footprint.

The Board continue to receive updates from the Department through strategic overview from the Regional Operations Director and status report updates from the District Operations Managers. The continual funding cuts for the Department have been disappointing and has been noticeable, but the board is encouraged by the biodiversity gains and good results across the rohe. These include the Te Hoiere project funded through the Nature Conservancy highlighting Ngāti Kuia's successful role in restoration and action on the ground. The Kaka numbers have increased in the Abel Tasman through the work of Project Janszoon, DOC and volunteers and the Rangitahi/Molesworth plan continues to process with a relationship and Ngāti Kuri and DOC to name a few. The Mohua/Golden Bay area office has welcomed new Operations Manager Ross Trotter.

The Board continues to work with regional partners, providing input into local biodiversity forums and submissions on relevant topics such as the Marlborough District Council's East Coast beach vehicle access bylaw. Specific topics have been handled by Board committees focussed on: Te Ao Māori (Iwi Komiti); Permissions; and Health & Safety; Tasman Environmental Trust with a Board representative, Molesworth and the local Biodiversity Strategies for NCC and TDC. The Board also continue the support of the community and the projects on the ground through site visits and the public forum updates. The Board liaison roles continue with the West Coast Tai Poutini Conservation Board (WCTPB) and Canterbury Aoraki Conservation Board (CACB) and we have met with WCTPB in Oct 2022 and CACB in April 2023 in Kaikōura. These hui have been valuable for all boards to make connections and to work together on shared DOC kaupapa.

Our board have a culture that has been built on the backs of those who have been before us and is guided by our 'Tikanga mō te Poari' document and values. We acknowledge the support provided to the Board by by our whānau, hapū and iwi, our communities, the Department, specifically by the Pou Tairangahau, Treaty Ranger, Operations Director, Statutory Manager and Board Support Officer. We will continue to provide a kaitiaki role on behalf of our communities to enhance the mauri of our taiao and taonga.

Nō reira tēnā rā koutou kātoa.

E kii ana te whakatauki

“He kuaka mārangaranga, kotahi manu e tau ki te tāhuna, tau atu, tau atu, tau atu”.

(The flock of godwits have swooped up into the air, one lands on the sandbank and the others follow - Leaders and followers work together”).



Nick Eade

Aneika Young and Nick Eade
Chairperson and Deputy (Co-Chairs)
Nelson Marlborough Conservation Board

Nō reira tēnā rā koutou kātoa.

E kii ana te whakatauki “He waka eke noa”

CONTENTS

Table of Contents

1.	INTRODUCTION.....	6
2.	ROHE.....	6
	2.1. Tangata whenua	7
	2.2. Conservation features of the area	7
	2.3. Conservation issues in the area	7
3.	FUNCTIONS.....	9
	3.1. Board functions under section 6M of the Conservation Act 1987	9
	3.2. Board powers under section 6N of the Conservation Act 1987	9
	3.3. Board functions under section 30 of the National Parks Act 1980.....	9
4.	MEMBERSHIP.....	10
	4.1. Members' profiles.....	11
5.	MEETINGS AND FIELD TRIPS.....	13
	5.1. Agendas.....	13
	5.2. Field trips and site inspections	14
	5.3. Members' attendance.....	14
6.	MAHI.....	15
	6.1. Committees.....	15
	6.2. Representatives and Board appointees	15
	6.3. Liaison roles.....	16
	6.4. Other events and training.....	16
7.	STATUTORY ACTIVITY.....	16
	7.1. Annual Work Plan	16
	7.2. Nelson Marlborough Conservation Management Strategy (CMS)	16
	7.3. Management Plans	16
8.	ADVICE AND ADVOCACY.....	17
	8.1. Advice to the Department.....	17
	8.2. Community advocacy and involvement.....	17
	8.3. Community visibility.....	18
	8.4. District and regional council advocacy and advice	18
	8.5. Iwi liaison.....	18
9.	FEES AND ALLOWANCES	19

1. INTRODUCTION

Section 6(O) of the Conservation Act requires conservation boards to provide the New Zealand Conservation Authority (**Authority**) with an annual report as soon as practical after 30 June each year. In recognition of this requirement the Nelson Marlborough Conservation Board (**Board**) submits this annual report.

Conservation boards are independent advisory bodies, established by statute. They represent the community and offer interaction between communities and the Department of Conservation (**Department**), within their area of jurisdiction.

Conservation board members are appointed by the Minister of Conservation under section 6(P) of the Conservation Act 1987 (**Act**). Board functions are outlined in section 6(M) and the powers, which enable the conservation boards to carry out those functions, are under 6(N) of the Act. The Board has several statutory roles under various Acts, including:

- the recommendation of the Nelson Marlborough Conservation Management Strategy (CMS) to the Authority for approval
- advising the Department and the Authority on how conservation management strategies and plans will be put into practice.
- reporting on the implementation of the CMS
- the recommendation of national park management plans to the Authority for approval
- advising the Department and Authority on conservation matters, and proposed changes to status of land of national and international significance
- liaising with the regional Fish and Game Council on conservation matters
- carrying out other powers delegated by the Minister of Conservation, the Conservation Act, or any other Act.

Conservation boards also have several functions under section 30 of the National Parks Act 1980. These functions include recommending the review or amendment of national park management plans and recommending approval of these plans by the Authority.

2. ROHE

The Nelson / Marlborough Conservation Board's area of jurisdiction covers the area of 3,964,158.66 hectares. This area covers all of Nelson and Marlborough, with oversight of the whole of Kahurangi National Park. This also includes Abel Tasman and Nelson Lakes National Parks, Mt Richmond Forest Park, Molesworth Recreation Reserve, and important nature reserves such as Takapourewa (Stephens Island) and Farewell Spit.

The area also extends out to the 12-nautical mile limit with respect to coastal and marine issues, and out to the 200-nautical mile limit with respect to protected species.

Public conservation land and waters make up 45.5% of all the Board's total district. This consists of:

- 1,470,202.67 hectares of Public Conservation Land
- 321,492.73 hectares of Sanctuaries to Protect Marine Mammals
- 14,377.90 hectares of Marine Reserves

These areas constitute approximately 12.5% of all public conservation areas in New Zealand.

2.1. Tangata whenua

The Board area includes the rohe of the eight iwi of Te Tau Ihu - Te Ātiawa, Ngāti Rārua, Ngāti Koata, Ngāti Kuia, Rangitāne, Ngāti Toa Rangatira, Ngāti Apa ki te Rā Tō, and Ngāti Tama - and Ngāti Kuri and Ngāti Waewae (Rūnanga of Ngāi Tahu). There are 11 Marae within the Board area.

2.2. Conservation features of the area

The main features of Public Conservation Land and Waters within the Board's boundaries are:

- Abel Tasman National Park - 23,502.06 ha
- Kahurangi National Park - 516,846.85 ha
- Nelson Lakes National Park - 101,188.86 ha
- Ka Whata Tu o Rākohouia Conservation Park - 87,877.84 ha
- Molesworth Recreation Reserve - 180,787 ha
- Mount Richmond Forest Park - 165,603.19 ha
- North West Nelson Forest Park - 32,604.54 ha
- 223 Scenic Reserves - 88,860.42 ha
- 11 Historic Reserves - 1,414.99 ha
- 66 Recreation Reserves - 180,067.48 ha
- 208 Stewardship Areas - 241,431.66 ha
- 234 Marginal Strips - 4,415.22 ha
- 18 Specially Protected Area - 6,156.79 ha
- 6 Marine Reserves - 14,377.90 ha
- 4 Sanctuaries to protect Marine Mammals - 321,492.73 ha.

There are about 750 heritage and cultural sites, both Māori and European, including archaeological sites, historic backcountry huts, a whaling station and cob cottages.

Species protection programmes in the area cover Hector's dolphin, tuatara, endemic frogs, Powelliphanta snails, great spotted kiwi, takahē, Hutton's shearwater, tītī/Hutton's shearwater, weka, kākā, black fronted tern and whio (blue duck) and include a 'mainland island' at Nelson Lakes, the Rotoiti Nature Recovery Project.

The Board's area also covers some of New Zealand's best-known and most-loved visitor sites, including Kaikōura Peninsula, Abel Tasman Coast Track, Heaphy Track, Wharariki Beach and Queen Charlotte Track. There are over 300 other walks and tracks totalling more than 1,950 kilometres.

2.3. Conservation issues in the area

The issues that are of key interest to the Board include:

- Ecosystem management and management of plant and animal species
- Management of recreational facilities
- Management of historic sites
- Concession activities including those relating to recreation and tourism activities, grazing, industrial use, baches, filming, gravel extraction.
- Marine protection

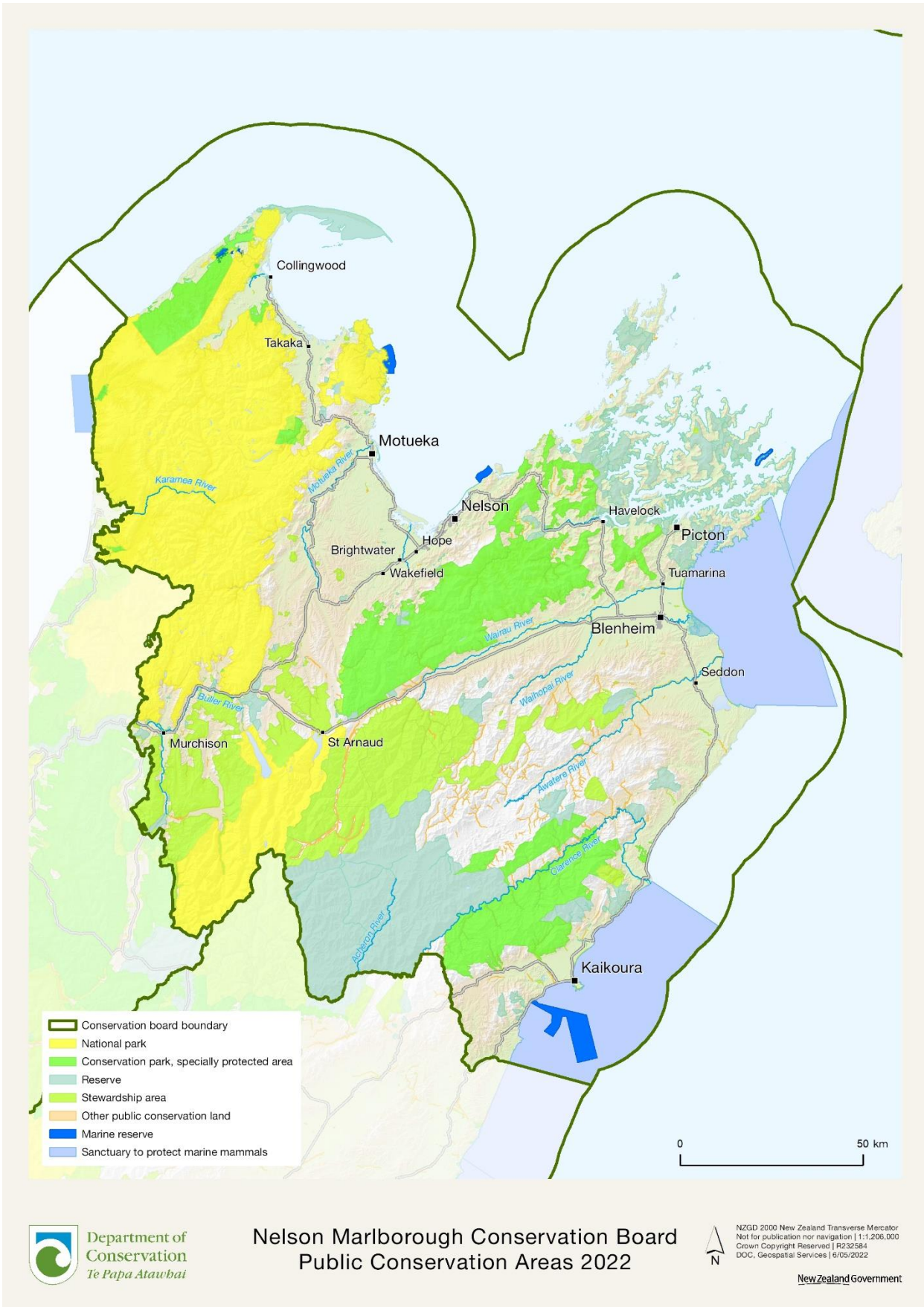


Figure 1: The Nelson Marlborough Conservation Board area of jurisdiction mostly aligns with the DOC Northern South Island region, above, with the addition of policy and planning responsibility for all Kahurangi National Park.

3. FUNCTIONS

3.1. Board functions under section 6M of the Conservation Act 1987

The functions of the Board are:

- 1) To recommend the approval by the Authority of conservation management strategies, and the review and amendment of such strategies, under the relevant enactments
- 2) To approve conservation management plans, and the review an amendment of such plans, under the relevant enactments
- 3) To advise the Authority and the Director-General on the implementation of conservation management strategies and conservation management plans for the area within the jurisdiction of the Board
- 4) To advise the Authority or the Director-General on any proposed change of status or classification of any area of national or international importance
- 5) To advise the Authority or the Director-General on any other conservation matter relating to any area with the jurisdiction of the Board
- 6) To liaise with any Fish and Game Council on matter within the jurisdiction of the Board
- 7) To exercise such powers and functions as may be delegated to it by the Minister under this Act or any other Act.

3.2. Board powers under section 6N of the Conservation Act 1987

- 1) Every conservation board shall have all such powers as are reasonably necessary or expedient to enable it to carry out its functions.
- 2) Without limiting the generality of subsection (1), each conservation board may -
 - i. Advocate its interests at any public forum or in any statutory planning process; and
 - ii. Appoint committees of members and other suitable persons, and delegate to them functions and powers.
- 3) The power conferred by subsection (2)(a) shall include the right to appear before courts and tribunals in New Zealand and be heard on matters affecting or relating to the Board's functions.

3.3. Board functions under section 30 of the National Parks Act 1980

- 1) to recommend management plans, and the review or amendment of such plans, for parks within the jurisdiction of the Board in accordance with sections 45 to 47:
- 2) to consider and determine priorities for the implementation of management plans for national parks:
- 3) to make recommendations to the Minister for the appointment of honorary rangers under section 40:
- 4) to review and report to the Director-General or the Authority, as appropriate, on the effectiveness of the administration of the general policies for national parks within the jurisdiction of the Board:
- 5) to give advice to the Director-General or the Authority—
 - i. on the interpretation of any management plan for a park; and

- ii. on any proposal for the addition of land to any national park or the establishment of a new national park; and
- iii. on any other matter relating to any national park, within the jurisdiction of the Board.

4. MEMBERSHIP

The Minister of Conservation appoints Board members under section 6P of the Conservation Act 1987. The process of appointment ensures that a range of perspectives, life experiences, and knowledge contribute to the advice provided and decisions made by the Board.

Under Section 6P of the Conservation Act, a Board whose area of jurisdiction is partly within the Ngāi Tahu claim area must consist of no more than 12 persons, with at least one person appointed on the nomination of Te Rūnanga o Ngāi Tahu. The Nelson Marlborough Conservation Board currently has two members who were appointed on the nomination of Te Rūnanga o Ngāi Tahu.

Board members are appointed for three-year terms unless they are appointed in replacement of a prior member's term and may be re-appointed. There were eleven Board members for the reporting year. In September 2022 Aneika Young was elected Chairperson and Nick Eade was confirmed as Deputy Chairperson. Scott Burnett and Raymond Smith were appointed as new Board members in July 2022.

During the year the Board had two resignations: Trevor Hook resigned in November 2022; and Raymond Smith resigned in June 2023. The following table lists the membership of the Board between 1 July 2022 and 30 June 2023:

Board Member	Area	Term start	Term end
Aneika Young (Chair)	Nelson	01/07/2021	30/06/2024
Nick Eade (Deputy Chair)	Marlborough Sounds	01/07/2021	30/06/2023
Ian Alach	Takaka	01/07/2021	30/06/2024
Lorraine Hawke (Ngāi Tahu nominee)	Kaikōura	01/07/2022	30/06/2025
Clint McConchie (Ngāi Tahu nominee)	Kaikōura	01/07/2021	30/06/2024
Emma Newcombe	Nelson	01/07/2020	30/06/2023
Trevor Hook	Marlborough Sounds	01/07/2020	30/06/2023
Raymond Smith	Marlborough Sounds	01/07/2022	30/06/2023
Scott Burnett	Nelson	01/07/2022	30/06/2025
Rima Piggott	Motueka	01/07/2022	30/06/2025
Harvey Ruru	Nelson	01/07/2021	30/06/2024

4.1. Members' profiles



Ian Alach is a self-employed small farmer and conservation consultant. He has extensive experience supervising contractor projects on conservation land. He has been carrying out wilding conifer control voluntarily on Molesworth and at Beeby's Knob in Mt Richmond Forest Park for many years. He is a member of the Golden Bay Alpine Tramping Club, secretary of the Takaka Dog Trial Club and co-president of the Takaka Badminton Club.



Nick Eade of Marlborough Sounds currently combines guiding work in Totaranui/Queen Charlotte Sound, with work on several conservation and restoration projects. She previously worked as an Environmental Scientist with a focus on biodiversity and land management. She has significant experience in consultation, advocacy, research and publication, and cultural awareness. She has a Masters in Resource Management.



Lorraine Hawke (of Ngāi Tahu o Ngāti Kurī me Ngāi Tuahuriri, Ngāti Waewae, Ngāti Irakehu, Ngāti Mamoe me Waitaha, Rangitāne) is nominated by Te Rūnanga o Ngāi Tahu. Lorraine is a former Māori Response Counsellor with a strong interest in Māori workforce development and Māori health. Lorraine has a background in governance, policy, and whānau development. Her interests are varied; however she is particularly drawn to kaupapa relating to cultural creative arts, rongoa, writing and composition.



Trevor Hook of Marlborough Sounds is a resort owner in the Marlborough Sounds and an RMA Commissioner. He has 30 years of experience in public life in various community, local government, and national body positions. He has previously been a Councillor for Marlborough District Council and has a Masters in Environmental Management.



Emma Newcombe of Nelson is a Coastal Ecologist at the Cawthron Institute where she works on seabed and water column health, frequently as part of consenting processes under the RMA. She has a PhD in Marine Ecology and explores the marine environment as a kayaker and diver. Emma is familiar with conservation lands as a tramper and occasional hunter. She is also a student of Te Reo Māori.



Clint McConchie is of Ngāi Tahu and Ngāti Kurī decent and was nominated by Te Rūnanga o Ngāi Tahu. He is a Natural Resource Manager and has formerly had roles in farm management. He brings experience in, and knowledge of, RMA, land and environmental management, sustainable practices, and biodiversity to the board.



Rima Piggott of Motueka is affiliated to Ngāti Rārua, Te Ātiawa, Ngāti Toa Rangitira, Ngāti Ranginui, Ngāiterangi and Ngāti Tūwharetoa. Rima is a home health support worker and has a certificate in Horticultural Management. Rima has broad community involvement and is a Trustee for Te Rūnanga o Ngāti Rārua and a member of the Manawhenua ki Mohua Trust. She enjoys tramping, fishing, hunting, diving, gardening and gathering kai moana.



Archdeacon Emeritus TeHawe (Harvey) Ruru QSM of Nelson is affiliated to Te Ātiawa, Ngāti Tama, Ngāti Mutunga, Ngāti Maru, Ngāti Toa Rangitira, Kati Mamoe and Moriori. Harvey is a Trustee of Te Ātiawa o te Waka a Māui Trust and has had a long involvement as a claim's negotiator in the Waitangi Tribunal Claims settlement process. In 2016 he retired after 14 years as NZ Police Iwi Liaison Officer and Coordinator. Harvey is also an Anglican priest. He has wide ranging governance experience.



Aneika Young of Nelson has iwi affiliations with Ngāti Rārua ki Motueka, Te Ātiawa ki Te Tau Ihu, Ngāti Ruanui, Ngāti Koroki Kahukura, and Waikato Tainui. She is Kaiāwhina Māori, and an environmental scientist and researcher for Cawthron Institute in Nelson. She has a background as a consultant in Māori Resource Management and wide interests in outdoor recreation. Aneika is an iwi representative on several organisations.



Scott Burnett of Nelson has a business and governance background related to volunteering and conservation. He has completed a Masters degree focused on the relationships of eco-sanctuaries with Māori. Scott remains active and committed to conservation efforts in the Marlborough Sounds.



Raymond Smith of Marlborough Sounds has skills and experience in conservation and environmental ethic. He previously worked with DOC in his role of Te Taiao Manager for Ngāti Kuia and has considerable experience of, and involvement in, conservation projects in the region. Iwi affiliation: Ngāti Kuia.

5. MEETINGS AND FIELD TRIPS

The Board held six meetings during the reporting period. Venues for the meetings vary each year to ensure a wide coverage and enable members of the public in the region to attend meetings and access the Board.

Meeting date	Location/Venue	Field Trip
14 th September 2022	Online (<i>replacing 25 August 2022 meeting which was cancelled due to flooding in the region</i>)	
5 th & 6 th October 2022 (<i>Joint meeting with West Coast Tai Poutini Conservation Board</i>)	Karamea	Field trip to Ōpārara, Kahurangi National Park
1 st December 2022	Rotoiti - Nelson Lakes	
2 nd February 2023	Whakatū - Nelson	Short field trip to Brook Waimarama Sanctuary in Nelson
5 th & 6 th April 2023 (<i>Joint meeting with Canterbury Aoraki Conservation Board</i>)	Kaikoura	Field trip along Kaikōura coastline hosted by Ngāti Kurī and focused on cultural values
8 th June 2023	Renwick	

5.1. Agendas

Operations Director Roy Grose provides a strategic update at each meeting. District updates are provided by Operations Managers at most meetings.

The Board receives regular reports from the Department each meeting, including on operational work in the region, and statutory management planning and RMA advocacy work underway in the region.

The Board hosted and heard from several different speakers, Department of Conservation staff and others group representatives from around the region.

- December's meeting hosted Jen Skilton (Taiao Manager) and Grace Tocker (Taiao Advisor) of Ngāti Apa ki Rā Tō. They presented on the work they are doing with tuna and how the area of Rotoiti is a significant to their iwi.
- Nettie Stow also attended the December meeting to speak around the funding outcomes of 'Jobs for Nature' and eligibility for DOC's Community funding. Nettie spoke on behalf of Whenua Iti Outdoors who are not eligible for the next round of DOC funding.
- At the Nelson meeting in February DOC's management planning team and Mike Davies (DOC's Senior Visitor Advisor) talked to the Board about a proposed

national partial review of Conservation Management Strategies to address biking on public conservation land.

- Charmaine Petereit (Operations Manager of Takaka Hill Biodiversity Group) presented on the purpose of the group and its goal to restore a corridor between Able Tasman and Kahurangi national parks.
- At the February meeting David Melville presented his and Rob Schuckard’s research on sites of international importance for waterbirds in Nelson-Tasman. He advised the Board there are seven site outside of Farewell Spit (which is a RAMSAR site) which are of international importance. Their report is being finalised. David sought the Board’s support and dialogue with Tasman District and Nelson City Councils on how best to safeguard these sites.
- Anne Brow and Lisa Thurlow from DOC’s Regional Planning Team spoke to the Board in April about ecological and species management priorities for the region and how these are reflected in business planning. The Board was interested in how mātauranga Māori was included in the prioritisation process.

The agendas and minutes from all Board meetings can be found on the Board’s webpage: <https://www.doc.govt.nz/about-us/statutory-and-advisory-bodies/conservation-boards/nelson-marlborough/>

5.2. Field trips and site inspections

Field trips are an excellent opportunity for Board members to become more aware of and understand conservation issues within their region.

At the October 2022 joint meeting with West Coast Tai Poutini Conservation Board in Karamea both Boards took the opportunity to visit the new development in Ōpārara, Kahurangi National Park. Members walked along the new track to the Ōpārara Arch. The Nelson Marlborough Board was engaged in the development project for the Ōpārara and welcomed the opportunity to see the result of the planning and the work.

A short field trip to the Brook Waimarama Sanctuary in Nelson was held in February at the end of the meeting. Sanctuary staff spoke to the Board about their work and vision and then took members on a short walk through the Sanctuary.

At the joint meeting with Canterbury Aoraki Conservation Board in April 2023, the Board was hosted by Ngāti Kurī on a tour of the Kaikōura coastline by bus to see the cultural interpretation and hear Ngāti Kurī’s history.

5.3. Members’ attendance

Board Member	Meetings (total #)	Fieldtrips (total #)
Ian Alach	6	3
Nick Eade	5	3
Lorraine Hawke	2	1
Trevor Hook	1	0
Clint McConchie	3	1

Emma Newcombe	5	2
Rima Piggott	4	1
Harvey Ruru	4	2
Aneika Young	5	3
Scott Burnett	6	3
Raymond Smith	4	2

6. MAHI

6.1. Committees

The Conservation Act 1987 enables the Board to establish committees to carry out functions or tasks delegated by the Board. Committees that were active during the reporting period, and members involved in those committees included:

Permissions Committee – To advise the Department on policy matters associated with concessions and enable feedback on concession applications within the limited timeframes allowed for Board input. The committee is only formally involved in the concessions process when one of the agreed trigger points is activated, most often being a new type of activity.

- Members: Ian Alach (convenor), Clint McConchie and Emma Newcombe

Iwi Komiti – To progress and advise on iwi matters and/or relationships

- Members: Aneika Young (convenor), Clint McConchie, Rima Piggott, Harvey Ruru, Lorraine Hawke, Raymond Smith

Stewardship Land Reclassification Committee – To advise the Department on matters relating to stewardship land reclassification

- Members: Harvey Ruru, Aneika Young, Ian Alach, Raymond Smith

Molesworth Management Plan Review Committee – To advise the Department on matters relating to the Molesworth Management plan review and provide input into the development of the draft plan.

- Members: Nick Eade, Ian Alach, Lorraine Hawke, Scott Burnett

Health, Safety and Wellbeing Committee – To monitor and review health and safety matters including the Board's Health and Safety Policy

- Members: Harvey Ruru, Emma Newcombe and Trevor Hook

6.2. Representatives and Board appointees

The Board provides representation on two entities in the region:

- Molesworth Steering Committee – Nick Eade (Ministerial appointment)
- Tasman Environmental Trust – Scott Burnett

6.3. Liaison roles

Sally Gepp is the NZCA liaison person for the Board. Copies of all agendas and minutes are exchanged between the Board and NZCA.

Board members were also appointed to liaise with adjoining conservation boards. The Board also exchanges copies of all agendas and minutes with these neighbouring boards.

- West Coast Tai Poutini Conservation Board liaison – Harvey Ruru.
- Canterbury Aoraki Conservation Board liaison – Raymond Smith

Harvey attended the May 2023 meeting of the West Coast Tai Poutini Conservation Board which included a visit to the Pike River Mine site with families.

Raymond attended an online meeting of the Canterbury Aoraki Conservation Board in February 2023.

Two joint Board meetings were held during the year. In October the Board met in Karamea with the West Coast Tai Poutini Conservation Board and in April the Board met in Kaikōura with the Canterbury Aoraki Conservation Board.

6.4. Other events and training

Board Chairs' conference – Aneika Young as Chair attended the Chairs Conference in Wellington in September 2022.

7. STATUTORY ACTIVITY

7.1. Annual Work Plan

After receiving its Letter of Expectation from the Minister of Conservation, the Board sets out its work plan for the upcoming year. An end-of-year report on the Work Plan is provided to the NZCA.

7.2. Nelson Marlborough Conservation Management Strategy (CMS)

The Board continued to express disappointment and frustration to the Department over the year that the CMS review continued to be delayed. The CMS is considered to be critical to strategically guiding the work of the Department in the region and the current CMS, which was approved in 1996, is long overdue for review.

DOC staff discussed a proposed national partial review of CMSs for biking on conservation land with the Board in February 2023. The Board responded that it did not support putting resources into a partial review of the Nelson Marlborough CMS and considered the focus should be on reviewing the whole CMS.

7.3. Management Plans

Rangitahi/Molesworth Recreation Reserve

The Board has been kept informed about the work DOC and Ngāti Kurī are doing to review the management plan for Molesworth Recreation Reserve. The Board established a committee to provide the Board's input into this review. The committee held a meeting with the Department in May 2023 to discuss a preliminary draft of the plan and also attended a discussion on biodiversity values in the reserve with DOC specialists in July. A discussion on the plan review was held at the joint meeting with the Canterbury Aoraki Board in April 2023.

Implementation monitoring

The Board considered implementation reports on the:

- Nelson Marlborough Conservation Management Strategy
- Te Waikoropupu Springs Management Plan

The Nelson Marlborough Conservation Management Strategy (approved in 1996) is out of date and not relevant to today's context, particularly in relation to engaging and partnering with iwi, whānau and hapu. The Board appreciated the approach taken to the implementation report and will analyse actions that have not been achieved to see whether anything is of concern.

West Coast Conservation Management Strategy

The Board discussed the review of the West Coast CMS with the West Coast Tai Poutini Board in relation to the jurisdictional overlaps between the Boards in relation to the Kahurangi National Park Management Plan. The Board is interested in how engagement with Te Tau Ihu iwi will take place and how this will be embedded in the CMS review process. The Board appreciates being kept informed about the review process.

8. ADVICE AND ADVOCACY

The Board provides advice and advocacy within the region and nationally.

Board members Aneika Young, Harvey Ruru and Raymond Smith attended a hui between the Minister of Conservation and the iwi of Te Tau Ihu in April 2023 in Nelson. Chair Aneika Young raised the matter of the overdue review of the Conservation Management Strategy with the Minister. The Board members signalled their support for iwi engagement in the stewardship land review in the region.

8.1. Advice to the Department

The Board advised the Department it supported a proposed marginal strip waiver on the Moutere Ditch, which was associated with a land exchange proposal which the Board had previously supported.

8.2. Community advocacy and involvement

The Board believes that working with conservation organisations and members of the public is very important. Meetings were held in different parts of the Nelson Marlborough region and opportunities for the public to attend Board meetings were advertised.

At public forums the Board heard about the following matters:

- a request for a change to the by-laws for Nelson Lakes National Park to allow the use of personal water-craft on Lake Rotoiti;
- outcomes from Job for Nature funding at Whenua Iti Outdoors;
- sites of significance for waterbirds in Nelson and Tasman; and
- the work of the South Marlborough Landscape Restoration Trust and issues arising from the reduction of government funding for wilding conifer control.

The Board appreciates the efforts of the public to attend meetings and always responds by letter with a response to questions asked or concerns raised.

The Board's nomination of Simon Walls for the Loder Cup was successful and members attended the presentation of the cup to Simon by the Minister of Conservation in October 2022 at Onetahua Marae in Golden Bay.

In response to the presentation from the South Marlborough Landscape Restoration Trust the Board wrote to MPI expressing its concern about the reduction in wilding conifer control funding. The Board recognises the potential impacts of wilding conifers on South Island landscapes, including Molesworth Recreation Reserve.

8.3. Community visibility

The Board maintains a presence on the Department's website and via the quarterly Conservation Board Newsletter.

Individual board members attended regional Biodiversity Forums and a range of events including bird translocations and are active in range of community trapping, weeding and planting activities. Scott Burnett provides an update on the Tasman Environmental Trust at each meeting.

8.4. District and regional council advocacy and advice

Over the year, the Board has maintained a strong interest in the progress of the Marlborough District Council East Coast Beach Vehicle Bylaw which it had supported through a submission. Nick Eade attended a meeting of Council in March, when councillors were making final decisions on the bylaw. The Board is interested in how compliance with the bylaw will be monitored and intends to invite Council representatives to a meeting to discuss how successful the bylaw is in practice.

Following David Melville's presentation to the Board on sites of significance for waterbirds in Nelson and Tasman, the Board intends to write to both Tasman District and Nelson City Councils when Mr Melville's report is finalised with a letter of support for getting the identified sites recognised in plans.

The Board agreed to join the Nelson Biodiversity Forum as an 'Ally' and members will continue to attend Forum meetings when able to.

8.5. Iwi liaison

The Iwi Komiti takes the lead on developing the cultural capability of Board members and upskilling Board members in Te Reo and tikanga. There are iwi representatives on all Board committees.

A focus on Te Ao Maori is integral to Board meetings and the Board's Tikanga mō te Poari.

Māori Board members attended a hui with the Minister of Conservation in April 2023. The Board has expressed support to the iwi of Te Tau Ihu on how they wish to engage in the process of stewardship land re-classification.

The field trip to view cultural interpretation along the Kaikōura coastline was hosted by Ngāti Kuri.

The Board considers iwi perspectives in its discussion and factors iwi views into its advice.

9. FEES AND ALLOWANCES

Fees and allowances are paid in accordance with the Fees and Travelling Allowances Act 1951. The chairperson receives a daily meeting fee of \$330, and other Authority members receive a daily meeting fee of \$250.



Caption: *Nelson Marlborough Conservation Board and the West Coast Tai Poutini Board at Ōpārara, Kahurangi National Park in October 2022.*

This report is presented to the New Zealand Conservation Authority as required by the Conservation Act 1987 and distributed to interested parties. Members of the public are welcome to attend conservation board meetings.

If you would like more information on the Nelson Marlborough Conservation Board please see the website www.conservationboards.org.nz, or e-mail nelsonmarlboroughboard@doc.govt.nz