



Te Rūnanga Whakauka o Kahurangi ki Kaikōura

NELSON MARLBOROUGH CONSERVATION BOARD

Herea kia Kōtahi - Working Together



**Nelson Marlborough
Conservation Board
Annual Report 2021-2022**

Annual Report of the Nelson Marlborough Conservation Board Te Rūnanga Whakauka o Kahurangi ki Kaikōura

For the period 1 July 2021 to 30 June 2022

*Presented to the New Zealand Conservation Authority / Te Pou Atawhai Taiao O Aotearoa
pursuant to section 60 of the Conservation Act 1987*

Cover photo: Nelson Marlborough Conservation Board with Healthpost Nature Trust and DOC Takaka Staff. Cape Farewell.

Back cover photo: Nelson Marlborough Conservation Board at Papanoa Point on the Kaikōura Coast.

Published by

Nelson Marlborough Conservation Board
c/- Department of Conservation
Private Bag 5
Nelson

www.conservationboards.org.nz
nelsonmarlboroughboard@doc.govt.nz

ISSN 1176-7065 (print)

ISSN 1178-4113 (online)

August 2022

DOC-7131721

LETTER FROM THE CHAIR

Edward Ellison
Chairperson, New Zealand Conservation Authority
PO Box 10420
Wellington 6143

Tēnā koe Edward

Tēnā rā koutou kātoa,
E te tutahi ngā mihi ki atu ngā mate kua ngaro i te pō, haere kua wheturangitia a Matariki
Kia koutou ngā hunga ora manwatia a Matariki kia koutou kātoa
Ngā iwi o te motu nei me ngā rangatira o Te Papa Atawhai tēnei te mihi kia koutou,
E te minita tēnei te mihi kia koe, me ngā kaimahi o Te Papa Atawhai
Tēnā rā koutou kātoa.

While many COVID-19 restrictions have been eased, necessary precautions impacted on both the Department and the Board's activities throughout the current year.

A significant priority for the Board this year was to uphold and advance Treaty partner relationships, starting with the overall leadership of the Board operating in the spirit of a co-chairing model. This provides diversity and the potential to plan for succession in chairing and contributes to the Board's commitment to Te Tiriti o Waitangi. In parallel the Board actively supports co-design approaches to future management, with the Rangitahi/Molesworth plan a significant example.

We continue to receive valuable knowledge and input from our Pou Tairangahau and Treaty Settlement Ranger at meetings, including presentations on issues such as Te Tiriti and settlements, coupled with knowledge of Te Tau Ihu iwi. Te Ao Māori is led by our Iwi Komiti at each Board meeting, with a focus on the region we meet in and iwi Māori matters with respect to DOC.

Meetings are held on marae or in iwi spaces where possible, although this has been curtailed by COVID-19 precautions. Re-classifying Stewardship Land is a significant activity for the region, the Board and Te Tau Ihu iwi, with initial hui having been held. The reform process for the Wildlife Act is also a priority area for the Board and Iwi Komiti work with respect to the importance of this mahi to iwi. The Board continue to support the local Iwi view on operational matters for example their recommendation that access to the Riuwaka caves should be closed to the public following instances of vandalism.

The Board is encouraged by results from across the rohe reporting activities aimed at biodiversity gains. These include a great start to the eradication of wilding pines throughout the region, along with gains in animal pest management and planning for future beech mast

events. These efforts have been complemented with the discovery of new populations of threatened plants, species re-locations and protection via limiting public access.

The Board continues to work with regional partners, providing input into local biodiversity forums and submissions on relevant topics such as the Marlborough District Council's East Coast beach vehicle access bylaw and aquaculture variations in the Marlborough Environment plan. Specific topics have been handled by Board committees focussed on: Te Ao Māori (Iwi Komiti); the Ōpārara re-development in conjunction with the West Coast Tai Poutini Conservation Board; Permissions; and Health & Safety.

Although overall visitor numbers in the region are down, the Nelson Marlborough great walks continue to experience good visitor numbers and satisfaction from the predominantly New Zealand visitors. Maintaining the high summer occupancy will be challenged by the February 2022 storm damage to the Heaphy track.

The Board has considered options for reducing their carbon emissions and is now focussed on our largest source - transport. We also commend DOC for implementing changes leading towards a lower emissions future.

Statutory planning has again been a major disappointment due to lack of progress. This presents challenges for both the staff and Board trying to manage the estate in an environment where plans are no longer fit for purpose. This curtails the Board's opportunities for strategic input and leads to more ad-hoc focus on parts of the system rather than the whole. Reform of the Conservation legislation, the re-invigorating of local plans and the re-classification of Stewardship land will see the coming period provide challenges, opportunities, and motivation for the Board to engage at a more integrated and strategic level.

In June 2022 the Board farewelled its Chair, Murray Poulter after seven years of service. Anna-Kate Goodall also retired from the Board at this time. The remaining members welcome Raymond Smith and Scott Burnett to the fold for the coming year.

We acknowledge the support provided to the Board by the Department, specifically by the Operations Director, Statutory Manager and Board Support Officer.

This is a highly engaged collegial Board – long may it last that way.

Nō reira tēnā rā koutou kātoa.
E kii ana te whakatauki "He waka eke noa"



Murray Poulter and Aneika Young
Chairperson and Deputy (Co-Chairs)
Nelson Marlborough Conservation Board

CONTENTS

Table of Contents

1.	INTRODUCTION.....	8
2.	ROHE.....	8
	2.1. Tangata whenua	9
	2.2. Conservation features of the area	9
	2.3. Conservation issues in the area	9
3.	FUNCTIONS	11
	3.1. Board functions under section 6M of the Conservation Act 1987	11
	3.2. Board powers under section 6N of the Conservation Act 1987	11
	3.3. Board functions under section 30 of the National Parks Act 1980.....	11
4.	MEMBERSHIP.....	12
	4.1. Members' profiles.....	13
5.	MEETINGS AND FIELD TRIPS	14
	5.1. Agendas.....	15
	5.2. Members' attendance.....	16
6.	MAHI	16
	6.1. Standing Committees.....	16
	6.2. Representatives and Board appointees	17
	6.3. Liaison roles.....	17
	6.4. Current working groups.....	17
	6.5. Other events and training.....	17
7.	STATUTORY ACTIVITY.....	18
	7.1. Annual Work Plan	18
	7.2. Nelson Marlborough Conservation Management Strategy (CMS)	18
	7.3. Management Plans	18
8.	ADVICE AND ADVOCACY.....	18
	8.1. Advice to the Department.....	18
	8.2. Submissions.....	18
	8.3. Community advocacy and involvement.....	19
	8.4. Community visibility.....	19
	8.5. District and regional council advocacy and advice	19
	8.6. Iwi liaison.....	19
9.	FEES AND ALLOWANCES.....	20

1. INTRODUCTION

Section 6(O) of the Conservation Act requires conservation boards to provide the New Zealand Conservation Authority (**Authority**) with an annual report as soon as practical after 30 June each year. In recognition of this requirement the Nelson Marlborough Conservation Board (**Board**) submits this annual report.

Conservation boards are independent advisory bodies, established by statute. They represent the community and offer interaction between communities and the Department of Conservation (**Department**), within their area of jurisdiction.

Conservation board members are appointed by the Minister of Conservation under section 6(P) of the Conservation Act 1987 (**Act**). Board functions are outlined in section 6(M) and the powers, which enable the conservation boards to carry out those functions, are under 6(N) of the Act. The Board has several statutory roles under various Acts, including:

- the recommendation of the Nelson Marlborough Conservation Management Strategy (CMS) to the Authority for approval
- advising the Department and the Authority on how conservation management strategies and plans will be put into practice
- reporting on the implementation of the CMS
- the recommendation of national park management plans to the Authority for approval
- advising the Department and Authority on conservation matters, and proposed changes to status of land of national and international significance
- liaising with the regional Fish and Game Council on conservation matters
- carrying out other powers delegated by the Minister of Conservation, the Conservation Act or any other Act.

Conservation boards also have several functions under section 30 of the National Parks Act 1980. These functions include recommending the review or amendment of national park management plans and recommending approval of these plans by the Authority.

2. ROHE

The Nelson / Marlborough Conservation Board's area of jurisdiction covers the area of 3,964,158.66 hectares. This area covers all of Nelson and Marlborough, with oversight of the whole of Kahurangi National Park. This also includes Abel Tasman and Nelson Lakes National Parks, Mt Richmond Forest Park, Molesworth Recreation Reserve and important nature reserves such as Takapourewa (Stephens Island) and Farewell Spit.

The area also extends out to the 12-nautical mile limit with respect to coastal and marine issues, and out to the 200-nautical mile limit with respect to protected species.

Public conservation land and waters make up 45.5% of all the Board's total district. This consists of:

- 1,470,202.67 hectares of Public Conservation Land
- 321,492.73 hectares of Sanctuaries to Protect Marine Mammals
- 14,377.90 hectares of Marine Reserves

These areas constitute approximately 12.5% of all public conservation areas in New Zealand.

2.1. Tangata whenua

The Board area includes the rohe of the eight iwi of Te Tau Ihu - Te Ātiawa, Ngāti Rārua, Ngāti Koata, Ngāti Kuia, Rangitāne, Ngāti Toa Rangatira, Ngāti Apa ki te Rā Tō, and Ngāti Tama - and Ngāti Kurī and Ngāti Waewae (Rūnanga of Ngāi Tahu). There are 11 Marae within the Board area.

2.2. Conservation features of the area

The main features of Public Conservation Land and Waters within the Board's boundaries are:

- Abel Tasman National Park – 23,502.06 ha
- Kahurangi National Park – 516,846.85 ha
- Nelson Lakes National Park – 101,188.86 ha
- Conservation Park – Onekaka River – 3.07 ha
- Ka Whata Tu o Rakihouia Conservation Park – 87,877.84 ha
- Mount Richmond Forest Park – 165,603.19 ha
- North West Nelson Forest Park – 32,604.54 ha
- 223 Scenic Reserves – 88,860.42 ha
- 11 Historic Reserves – 1,414.99 ha
- 66 Recreation Reserves – 180,067.48 ha
- 208 Stewardship Areas – 241,431.66 ha
- 234 Marginal Strips – 4,415.22 ha
- 18 Specially Protected Area – 6,156.79 ha
- 6 Marine Reserves – 14,377.90 ha
- 4 Sanctuaries to protect Marine Mammals – 321,492.73 ha

There are about 750 heritage and cultural sites, both Māori and European, including archaeological sites, historic backcountry huts, a whaling station and cob cottages.

Species protection programmes in the area cover Hector's dolphin, tuatara, endemic frogs, Powelliphanta snails, great spotted kiwi, takahē, Hutton's shearwater, tītī/Hutton's shearwater, weka, kākā, black fronted tern and whio (blue duck) and include a 'mainland island' at Nelson Lakes, the Rotoiti Nature Recovery Project.

The Board's area also covers some of New Zealand's best-known and most-loved visitor sites, including Kaikōura Peninsula, Abel Tasman Coast Track, Heaphy Track, Wharariki Beach and Queen Charlotte Track. There are over 300 other walks and tracks totalling more than 1,950 kilometres.

2.3. Conservation issues in the area

The issues that are of key interest to the Board include:

- Ecosystem management and management of plant and animal species
- Management of recreational facilities
- Management of historic sites
- Concession activities including those relating to recreation and tourism activities, grazing, industrial use, baches, filming, gravel extraction
- Marine protection

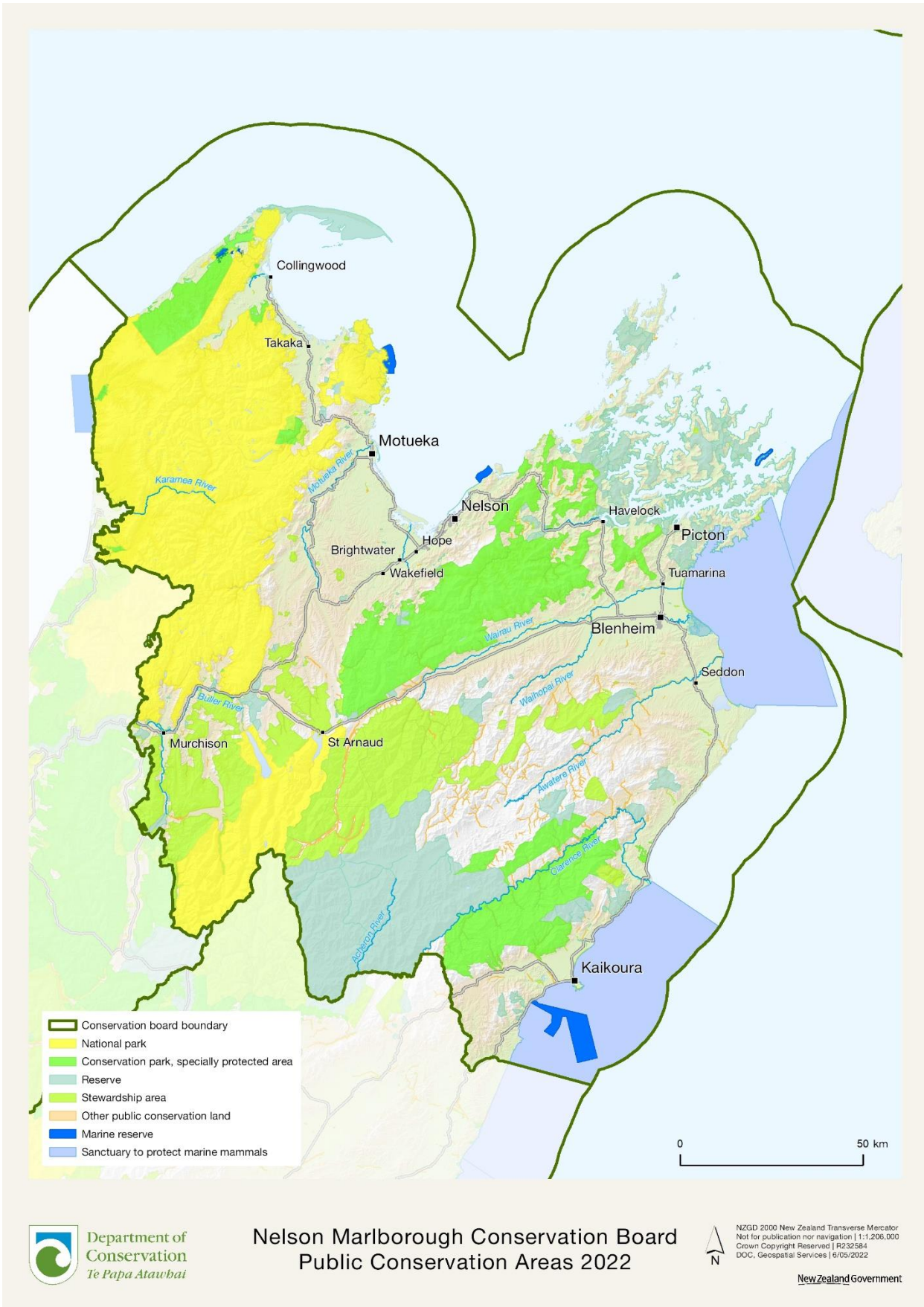


Figure 1: The Nelson Marlborough Conservation Board area of jurisdiction mostly aligns with the DOC Northern South Island region, above, with the addition of policy and planning responsibility for all Kahurangi National Park.

3. FUNCTIONS

3.1. Board functions under section 6M of the Conservation Act 1987

The functions of the Board are:

- 1) To recommend the approval by the Authority of conservation management strategies, and the review and amendment of such strategies, under the relevant enactments
- 2) To approve conservation management plans, and the review and amendment of such plans, under the relevant enactments
- 3) To advise the Authority and the Director-General on the implementation of conservation management strategies and conservation management plans for the area within the jurisdiction of the Board
- 4) To advise the Authority or the Director-General on any proposed change of status or classification of any area of national or international importance
- 5) To advise the Authority or the Director-General on any other conservation matter relating to any area with the jurisdiction of the Board
- 6) To liaise with any Fish and Game Council on matter within the jurisdiction of the Board
- 7) To exercise such powers and functions as may be delegated to it by the Minister under this Act or any other Act.

3.2. Board powers under section 6N of the Conservation Act 1987

- 1) Every conservation board shall have all such powers as are reasonably necessary or expedient to enable it to carry out its functions.
- 2) Without limiting the generality of subsection (1), each conservation board may –
 - i. Advocate its interests at any public forum or in any statutory planning process; and
 - ii. Appoint committees of members and other suitable persons, and delegate to them functions and powers.
- 3) The power conferred by subsection (2)(a) shall include the right to appear before courts and tribunals in New Zealand and be heard on matters affecting or relating to the Board's functions.

3.3. Board functions under section 30 of the National Parks Act 1980

- 1) to recommend management plans, and the review or amendment of such plans, for parks within the jurisdiction of the Board in accordance with sections 45 to 47:
- 2) to consider and determine priorities for the implementation of management plans for national parks:
- 3) to make recommendations to the Minister for the appointment of honorary rangers under section 40:
- 4) to review and report to the Director-General or the Authority, as appropriate, on the effectiveness of the administration of the general policies for national parks within the jurisdiction of the Board:
- 5) to give advice to the Director-General or the Authority—
 - i. on the interpretation of any management plan for a park; and

- ii. on any proposal for the addition of land to any national park or the establishment of a new national park; and
- iii. on any other matter relating to any national park, within the jurisdiction of the Board.

4. MEMBERSHIP

The Minister of Conservation appoints Board members under section 6P of the Conservation Act 1987. The process of appointment ensures that a range of perspectives, life experiences, and knowledge contribute to the advice provided and decisions made by the Board.

Under Section 6P of the Conservation Act, a Board whose area of jurisdiction is partly within the Ngāi Tahu claim area must consist of no more than 12 persons, with at least one person appointed on the nomination of Te Rūnanga o Ngāi Tahu. The Nelson Marlborough Conservation Board currently has two members who were appointed on the nomination of Te Rūnanga o Ngāi Tahu.

Board members are appointed for three-year terms unless they are appointed in replacement of a prior member's term and may be re-appointed. There were eleven Board members for the reporting year. Anna-kate Goodall was appointed for one year and Clint McConchie was appointed on the nomination of Te Rūnanga o Ngāi Tahu.

In June 2021, Murray Poulter was elected Chairperson and Aneika Young was elected Deputy Chairperson. This structure did not change throughout the year.

The following table lists the membership of the Board between 1 July 2021 and 30 June 2022:

Board Member	Area	Term start	Term end
Murray Poulter (Chair)	Motueka	01/07/2016	30/06/2022
Aneika Young (Deputy Chair)	Nelson	01/07/2018	30/06/2024
Ian Alach	Takaka	01/07/2018	30/06/2024
Nick Eade	Marlborough Sounds	01/07/2020	30/06/2023
Anna-Kate Goodall	Motueka	01/07/2021	30/06/2022
Lorraine Hawke (Ngāi Tahu nominee)	Kaikōura	01/07/2019	30/06/2022
Trevor Hook	Marlborough Sounds	01/07/2020	30/06/2023
Clint McConchie (Ngāi Tahu nominee)	Kaikōura	01/07/2021	30/06/2024
Emma Newcombe	Nelson	01/07/2020	30/06/2023

Rima Piggott	Motueka	01/07/2017	30/06/2022
Harvey Ruru	Nelson	01/07/2018	30/06/2024

4.1. Members' profiles



Ian Alach is a self-employed small farmer and conservation consultant. He has extensive experience supervising contractor projects on conservation land. He has been carrying out wilding conifer control voluntarily on Molesworth and at Beeby's Knob in Mt Richmond Forest Park for many years. He is a member of the Golden Bay Alpine Tramping Club, secretary of the Takaka Dog Trial Club and co-president of the Takaka Badminton Club.



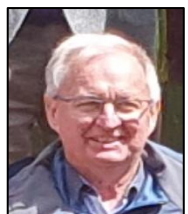
Nick Eade of Marlborough Sounds currently combines guiding work in Tootaranui/Queen Charlotte Sound, with work on several conservation and restoration projects. She previously worked as an Environmental Scientist with a focus on biodiversity and land management. She has significant experience in consultation, advocacy, research and publication, and cultural awareness. She has a Masters in Resource Management.



Anna-Kate has qualifications in Zoology, Natural Resource Management and Ecological Engineering. She has affiliation to Te Ātiawa and has volunteered for community conservation projects in Motueka and Marlborough Sounds. She is a keen user of the conservation estate and has been working in the visitor sector.



Lorraine Hawke (of Ngāi Tahu o Ngāti Kurī me Ngāi Tuahuriri, Ngāti Waewae, Ngāti Irakehu, Ngāti Mamoe me Waitaha, Rangitāne) is nominated by Te Rūnanga o Ngāi Tahu. Lorraine is a former Māori Response Counsellor with a strong interest in Māori workforce development and Māori health. Lorraine has a background in governance, policy, and whānau development. Her interests are varied; however she is particularly drawn to kaupapa relating to cultural creative arts, rongoa, writing and composition.



Trevor Hook of Marlborough Sounds is a resort owner in the Marlborough Sounds and an RMA Commissioner. He has 30 years of experience in public life in various community, local government, and national body positions. He has previously been a Councillor for Marlborough District Council and has a Masters in Environmental Management.



Emma Newcombe of Nelson is a Coastal Ecologist at the Cawthron Institute where she works on seabed and water column health, frequently as part of consenting processes under the RMA. She has a PhD in Marine Ecology and explores the marine environment as a kayaker and diver. Emma is familiar with conservation lands as a trumper and occasional hunter. She is also a student of Te Reo Māori.



Clint is of Ngāi Tahu and Ngāti Kurī decent and was nominated by Te Rūnanga o Ngāi Tahu. He is a Natural Resource Manager and has formerly had roles in farm management. He brings experience in, and knowledge of, RMA, land and environmental management, sustainable practices, and biodiversity to the board.



Rima Piggott of Motueka is affiliated to Ngāti Rārua, Te Ātiawa, Ngāti Toa Rangitira, Ngāti Ranginui, Ngāiterangi and Ngāti Tūwharetoa. Rima is a home health support worker and has a certificate in Horticultural Management. Rima has broad community involvement and is a Trustee for Te Rūnanga o Ngāti Rārua and a member of the Manawhenua ki Mohua Trust. She enjoys tramping, fishing, hunting, diving, gardening and gathering kai moana.



Murray Poulter lives in Tasman and was formerly Chief Scientist with NIWA overseeing the atmospheric, climate and hazards research activities. He is the Board's representative on the Tasman Environmental Trust. Murray enjoys walking, hiking, cycling, canoeing and fishing and is part owner of a QEII covenanted section of native bush. Murray was Deputy Chair for most of this term and elected as Chair in June 2021.



Archdeacon Emeritus TeHawe (Harvey) Ruru QSM of Nelson is affiliated to Te Ātiawa, Ngāti Tama, Ngāti Mutunga, Ngāti Maru, Ngāti Toa Rangitira, Kati Mamoe and Moriori. Harvey is a Trustee of Te Ātiawa o te Waka a Māui Trust and has had a long involvement as a claims negotiator in the Waitangi Tribunal Claims settlement process. In 2016 he retired after 14 years as NZ Police Iwi Liaison Officer and Coordinator. Harvey is also an Anglican priest. He has wide ranging governance experience.



Aneika Young of Nelson has iwi affiliations with Ngāti Rārua ki Motueka, Te Ātiawa ki Te Tau Ihu, Ngāti Ruanui, Ngāti Koroki Kahukura, and Waikato Tainui. She is Kaiāwhina Māori, and an environmental scientist and researcher for Cawthron Institute in Nelson. She has a background as a consultant in Māori Resource Management and wide interests in outdoor recreation. Aneika is an iwi representative on several organisations. She was elected Deputy Chair in June 2021.

5. MEETINGS AND FIELD TRIPS

The Board held six meetings during the reporting period. Venues for the meetings vary each year to ensure a wide coverage and enable members of the public in the district to attend meetings and access the Board.

Meeting date	Location/Venue	Field Trip
6 June 2021	DOC Nelson Office, Nelson	-
17 August 2021	DOC Nelson Office, Nelson	-
7 October 2021	DOC Waitohi Office, Picton	-

8 December 2021	Dolphin Encounter, Kāikoura	Kaikōura Coast - led by Ngāti Kuri
24 February 2022	DOC Office, Nelson	Nelson Boulder Bank
3 May 2022	Zatori, Golden Bay	Cape Farewell - led by the Healthpost Nature Trust
30 June 2022	Hauhunga Marae, Wairau	-

5.1. Agendas

Operations Director Roy Grose provides a strategic update at each meeting. District updates are also provided by Operations Managers at most meetings.

The Board receives regular reports from the Department each meeting, including on operational work in the region, and statutory management planning and RMA advocacy work underway in the region.

The Board hosted and heard from the Tasman Environmental Trust. Sky Davis talked about the history and work of the Trust and its evolution into an umbrella organisation for other conservation groups in the region. The Trust focuses on restoring lowlands and private land where ecosystem values are highly depleted.

Department staff presented throughout the year:

- Treaty Settlement Ranger Aroha Gilling presented to the Board ‘Treaty Settlements 101’ in December. She discussed Overlay Classifications and Tūpuni in Treaty Settlements which are instruments directed at Boards and the NZCA. Statements of Association for each iwi provide a narrative on places of significance.
- Partnerships Manager Matt Hippolite talked to the Board in February about DOC’s Partnership work, including activity and successes of the previous 12 months
- Ethan Taswell, Management Planner presented an update to the Board on Rangitahi/Molesworth Recreation Reserve Management Plan review work and the co-design process with Ngāti Kuri.
- The DOC Policy team presented on Conservation Law Reform, including the Wildlife Act Review and the Conservation and Management Processes Bill (CMAP).

Other topics discussed by the Board included:

- Measures to protect the Nelson Cave Spider in the Crazy Paving Cave at Ōpārara in Kahurangi National Park
- Proposed legislative changes to make the process of re-classifying stewardship land more efficient and effective
- Chair Murray Poulter presented on the science of Climate Change in February and led a discussion on sustainability at the Board’s May meeting.

The agendas and minutes from all Board meetings can be found on the Board’s webpage: <https://www.doc.govt.nz/about-us/statutory-and-advisory-bodies/conservation-boards/nelson-marlborough/>

5.2. Field trips and site inspections

Field trips are an excellent opportunity for Board members to become more aware of conservation issues within their region.

In December 2021 the Board visited the Kaikōura coast to view new cultural interpretation along the coastline. The trip was hosted by Maurice Manawatu from Ngāti Kurī.

In February 2022 the Board visited the Nelson Boulder Bank (*Te Taero a Keropa* or *Te Tāhuna o Tama-i-ea*) which is managed as a scenic reserve by DOC. The purpose of the visit was to see the private baches located on the Boulder Bank.

In Golden Bay in May 2022 the Board met HealthPost Nature Trust representatives and were hosted on a visit to the Farewell Spit eco-sanctuary which the Trust has established.

5.3. Members' attendance

Board Member	Meetings (total #)	Fieldtrips (total #)
Ian Alach	7	3
Nick Eade	7	3
Anna-Kate Goodall	6	1
Lorraine Hawke	6	1
Trevor Hook	5	0
Clint McConchie	5	2
Emma Newcombe	7	2
Rima Piggott	6	2
Murray Poulter	6	2
Harvey Ruru	7	0
Aneika Young	7	3

6. MAHI

6.1. Standing Committees

The Conservation Act 1987 enables the Board to establish committees to carry out functions or tasks delegated by the Board. Committees that were active during the reporting period, and members involved in those committees included:

Permissions Committee – To advise the Department on policy matters associated with concessions and enable feedback on concession applications within the limited timeframes allowed for Board input. The committee is only formally involved in the concessions process when one of the agreed trigger points is activated, most often being a new type of activity.

- Members: Murray Poulter (convenor), Ian Alach, Clint McConchie

Stewardship Land Reclassification Committee – To advise the Department on matters relating to stewardship land reclassification

- Members: Harvey Ruru, Aneika Young, Ian Alach

Iwi Komiti – To progress and advise on iwi matters and/or relationships

- Members: Aneika Young (convenor), Clint McConchie, Rima Piggott, Harvey Ruru, Lorraine Hawke

Molesworth Management Plan Review Committee – To advise the Department on matters relating to the Molesworth Management plan review

- Members: Nick Eade, Ian Alach, Lorraine Hawke

Health, Safety and Wellbeing Committee – To monitor and review health and safety matters including the Board’s Health and Safety Policy

- Members: Harvey Ruru, Emma Newcombe and Trevor Hook

6.2. Representatives and Board appointees

The Board provides representation on two entities in the region:

- Molesworth Steering Committee – Nick Eade (Ministerial appointment)
- Tasman Environmental Trust – Murray Poulter

6.3. Liaison roles

Sally Gepp is the NZCA liaison person for the Board. Copies of all agendas and minutes are exchanged between the Board and NZCA.

Board members were also appointed to liaise with adjoining conservation boards. The Board also exchanges copies of all agendas and minutes with these neighbouring boards.

- West Coast Tai Poutini Conservation Board liaison – Harvey Ruru. Harvey attended the July 2021 meeting of the West Coast Tai Poutini Conservation Board.
- Canterbury Aoraki Conservation Board liaison – Lorraine Hawke

Mike Legge, chair of the West Coast Tai Poutini Conservation Board attended the June 2022 meeting of the Nelson Marlborough Conservation Board. He talked about the review of the West Coast Conservation Management Strategy (CMS) which has been initiated and the need to keep the Nelson Marlborough Conservation Board informed through the review process as Kahurangi National Park falls in the West Coast CMS area.

6.4. Current working groups

Short-term working groups are set up to respond to specific tasks

- Ōpārara redevelopment – Murray Poulter (Convenor), Aneika Young, Trevor Hook and West Coast Tai Poutini Conservation Board representative Mike Legge. This working group was disestablished at the June 2022 meeting and the Board has asked to receive regular project updates from the Department.

6.5. Other events and training

Board Chairs’ conference - Murray Poulter as Chair attended the Chairs Conference in Wellington in November 2021.

7. STATUTORY ACTIVITY

7.1. Annual Work Plan

After receiving its Letter of Expectation from the Minister of Conservation, the Board sets out its work plan for the upcoming year. An end-of-year report on the Work Plan is provided to the NZCA.

7.2. Nelson Marlborough Conservation Management Strategy (CMS)

The Board continued to express disappointment and frustration to the Department over the year that the CMS review continued to be delayed. The CMS is considered to be critical to strategically guiding the work of the Department in the region and the current CMS, which was approved in 1996, is long overdue for review.

7.3. Management Plans

Rangitahi/Molesworth Recreation Reserve

The Board has been kept informed about the work DOC and Ngāti Kurī are doing to review the future of Molesworth Recreation Reserve and progress the management plan review. The Board was pleased to see the Plan review announced in July 2022 and looks forward to participating in the online engagement hui later in the year.

Implementation monitoring

The Board considered implementation reports on:

- Nelson Lakes National Park Management Plan
- Abel Tasman National Park Management Plan
- Abel Tasman Foreshore Scenic Reserve Management Plan

8. ADVICE AND ADVOCACY

The Board provides advice and advocacy within the region and nationally.

8.1. Advice to the Department

The Board provided advice to the Department on the following issues:

- Ōpārara Basin, Kahurangi National Park - Nelson Cave Spiders protection. The Board supported closing access to the Crazy Paving Cave to protect the spiders and enable monitoring to take place.
- Riuwaka Cave (Kahurangi National Park) Simply Sumless access – the Board supported the iwi view (as kaitiaki) to close access to the cave to protect its values.
- Nelson Lakes National Park Bylaw change – the Board supported the proposal to change the bylaw which applies to non-motorised aircraft so the bylaws align with the National Park Management Plan.

8.2. Submissions

The Board advocated its interests during the reporting period through several submissions, available to read on its webpage:

- Submission to the Marlborough District Council on the proposed East Coast Beach Vehicle Bylaw, including attendance at hearings.
- Submission on Variations 1 & 2 (Aquaculture) of the Marlborough Environment Plan.
- Submission on the legislative change proposals for stewardship land re-classification.
- Submission on the Conservation Management and Processes Bill (CMAP)

8.3. Community advocacy and involvement

The Board believes that working with conservation organisations and members of the public is very important. Meetings were held in different parts of the Nelson Marlborough region and opportunities for the public to attend Board meetings were advertised. Overall, public attendance was lower for meetings this year.

The Board appreciates the efforts of the public to attend meetings and always responds by letter with a response to questions asked or concerns raised.

The Board submitted a nomination for the Loder Cup 2022.

8.4. Community visibility

The Board maintains a presence on the Department's website, and via the quarterly Conservation Board Newsletter.

Board members were invited to a guided tour of the HealthPost Nature Trust Eco Sanctuary at Farewell Spit. Individual board members attended Biodiversity Forums, provided input to the Tasman Biodiversity Strategy, attended a range of events including bird translocations and are active in range of community trapping, weeding and planting activities.

8.5. District and regional council advocacy and advice

As noted above the Board made submissions to the Marlborough District Council East Coast Beach Vehicle Bylaw and on Variations 1 & 2 (Aquaculture) of the Marlborough Environment Plan.

8.6. Iwi liaison

The Iwi Komiti takes the lead on developing the cultural capability of Board members and upskilling Board members in Te Reo and tikanga. There are iwi representatives on all Board committees.

A focus on Te Ao Maori is integral to Board meetings and the Board's Tikanga mō te Poari.

The June Board meeting was held at Hauhunga Marae in Wairau, hosted by Ngāti Rārua.

Board members attended several hui with iwi on stewardship land re-classification, including a hui with the Minister of Conservation in January 2022. The Board has expressed support to the iwi of Te Tau Ihu on how they wish to engage in the process of stewardship land re-classification.

The field trip to view cultural interpretation along the Kaikōura coastline was hosted by Ngāti Kurī.

The Board considers iwi perspectives in its discussion and factors iwi views into its advice.

9. FEES AND ALLOWANCES

Fees and allowances are paid in accordance with the Fees and Travelling Allowances Act 1951. The chairperson receives a daily meeting fee of \$330, and other Authority members receive a daily meeting fee of \$250.



Caption: *Nelson Marlborough Conservation Board at Paparoa Point, on the Kaikōura coast. The Board were looking at the cultural interpretation along the coast. The pouwhenua here is of a man named Tūteurutira, and each stair leading to the lookout displays a name from his whakapapa, or genealogical line.*

This report is presented to the New Zealand Conservation Authority as required by the Conservation Act 1987 and distributed to interested parties. Members of the public are welcome to attend conservation board meetings.

If you would like more information on the Nelson Marlborough Conservation Board please see the website www.conservationboards.org.nz or contact the board support officer, at the Department of Conservation in Nelson phone (03) 546 3298 or e-mail nelsonmarlboroughboard@doc.govt.nz

Nelson Marlborough Conservation Board Work Programme

Report: 1 July 2021 – 30 June 2022

Work Programme overview

The Board's Work Programme is informed by the Board's Strategic Plan for 2019-2022 and the Board's Tikanga mō te Poari, as well as the Letter of Expectation from the Minister of Conservation.

It is structured in two parts, namely:

- Part A: Planned Board activities aimed at meeting the regional Work Programme contained in the letter:
 - understanding the Board's contribution to giving effect to the principles of the Treaty of Waitangi
 - Review/development/monitoring of statutory management plans including Conservation Management Strategies (CMS)
 - other statutory functions for the Board
 - advocacy and engagement with the community
- Part B: Planned Board activities aimed at general expectations contained in the letter:
 - working with each other and the Department of Conservation
 - taking account of Ministerial priorities
 - working with adjoining conservation boards and the New Zealand Conservation Authority (the Authority)

Status indicator

Colour	Indicates
Green	Completed
Yellow	Started and is ongoing
Grey	Requires action
Red	Remedial action required

PART A: REGIONAL WORK PROGRAMME

1 The Board will uphold and advance Treaty Partner relationships

Board objective:

Understand the Board's contribution to giving effect to the principles of the Treaty of Waitangi.

Planned Board activities, success measures and key milestones

	Action	Status	Progress commentary
1.1	Operate a co-chair model in the spirit of the Treaty Partnership Principle, in accordance with section 4 of the Conservation Act.		A co-chair model has been operated by the Board, with both Chairs working together to lead the Board. The formal appointments of Murray Poulter as Chair and Aneika Young as Deputy Chair reflect the spirit of the Treaty Partnership Principle.
1.2	Participate in hui and actively look for opportunities to engage with Treaty Partners.		Board members attended the stewardship land hui with Te Taihū / Te Tau Ihu iwi on 2 November 2021 and a hui with the Minister on 27 January 2022. The meeting on 30 June 2022 will be held at Hauhunga Marae and hosted by Ngāti Rārua. The Board heard the story of Ngāti Rārua's whakapapa and history of association with the Marae.
1.3	Upskill Board members on cultural capability and section 4 Conservation Act obligations.		The Board's Iwi Komiti led a discussion on Tikanga mō te Poari at the December meeting. An action was that the Iwi Komiti will lead a discussion at each meeting. 'Treaty Settlements 101' was presented by Aroha Gilling at the December Board meeting. A Treaty Implementation session will be held by Aroha later in 2022. The Iwi Komiti meets regularly in between meetings. The last Komiti hui was on 31 May 2022. Iwi Komiti members actively work behind the scenes to understand iwi views and ensure the Board is aware of these when making submissions, particularly in relation to legislative change proposals.

1.4	Whakamana (elevate mana) iwi role as kaitiaki.		<p>Support was provided to iwi at stewardship land hui on 2 November and 27 January through Board member attendance.</p> <p>At the 3 May 2022 meeting the Board supported the iwi view (as kaitiaki) to close access to the Riuwaka Cave- Simply sumpleless in the Kahurangi National Park for the interim until further discussions with iwi can be held.</p> <p>The Board has expressed its support for Te Taihu / Te Tau Ihu iwi on how they wish to engage in the stewardship land reclassification work.</p>
1.5	Contribute to co-design, co-approval and implementation processes with Treaty Partners.		<p>The Board supports the co-approval of the Rangitahi/Molesworth Management Plan with Ngāti Kurī. Board engagement in the plan review process has been limited this year due to the slow-down of process last year while awaiting for a new lead Planner to be recruited. Ethan Taswell is now in this role.</p> <p>Ethan presented to the Board on 3 May 2022 about the Rangitahi/Molesworth plan review process. The Board was pleased to hear of the progress being made and looks forward to the opportunity of being involved in stakeholder engagement hui.</p> <p>The development of a management plan for Te Pokohiwi is an opportunity to implement this action, but progress on this plan has paused at Rangitāne’s request.</p>
1.6	Actively support DOC cultural advisors and resources.		<p>Pou Tairangahou, Barney Thomas, and Treaty Settlements Ranger, Aroha Gilling are invited to (and attend) Iwi Komiti hui and Board meetings.</p>
1.7	Adopt the Board’s Tikanga mō te Poari and weave Te Ao Maori components, including iwi history, Te Reo Māori, whakapapa, kawa, tikanga, karakia and waiata throughout Board activities.		<p>Te Ao Māori is on the agenda for each meeting. Māori concepts and mātauranga around kupu are discussed, led by the Iwi Komiti.</p> <p>Tikanga mō te Poari will be included in the induction for new Board members.</p> <p>Holding Board meetings on marae or at iwi offices is a priority for the Board, as</p>

			this helps strengthen connections between Board members and tangata whenua.
--	--	--	---

2 Statutory planning

Board objective:

Review, develop and monitor statutory planning documents (management plans and Conservation Management Strategy).

Planned Board activities, success measures and key milestones

	Action	Status	Progress commentary
2.1	Recognise and facilitate co-design processes with Treaty partners.		Progress on this is covered in 1.5 above.
2.2	Develop a programme of work with Treaty Partners in relation to the Department's planning.		This has not yet been initiated.
2.3	Contribute jointly with Ngāti Kuri to Molesworth Recreation Reserve management plan review process.		The Board has signaled support for the co-approval of the Molesworth Management Plan with Ngāti Kuri. Board engagement in this process has been limited so far this year. A new Planner, Ethan Taswell, is now leading the process.
2.4	Contribute jointly with Rangitāne to Te Pokohiwi management plan process.		Board members met with Rangitāne in 2019 to discuss the development of this management plan. However, progress on this plan has paused at Rangitāne's request.
2.5	Contribute to Kahurangi National Park management plan review.		A review of Kahurangi National Park Management plan has not been initiated.
2.6	Review management plan & CMS implementation monitoring reports.		<p>The Board has received the following implementation reports on Management Plans this year:</p> <ul style="list-style-type: none"> • Nelson Lakes National Park Management Plan (October) • Abel Tasman National Park Management Plan (May) • Abel Tasman Foreshore Scenic Reserve Management Plan (May) <p>Ethan Taswell presented an update on the Rangitahi/Molesworth Management Plan review process at the May meeting and</p>

			<p>identified opportunities for Board involvement.</p> <p>Discussion took place at the May meeting on a proposal to amend the Nelson Lakes National Park Bylaws so they align with the management plan.</p>
--	--	--	---

3 Other statutory functions¹

Board objective:

The Board will carry out its statutory functions under section 6M of the Conservation Act 1987.

Planned Board activities, success measures and key milestones

	Action	Status	Progress commentary
3.1	Provide advice on any other conservation matter relating to any area in the Board's jurisdiction.		<p>The Board's Ōpārara working group has met regularly with the Department over the last year to discuss and provide advice on the Ōpārara Project developments in Kahurangi National Park. The working group is no longer needed to provide advice as the project is now in an operational phase. The Board will continue to receive project updates from the Department.</p> <p>The Board lodged a submission on Marlborough District Council's proposed East Coast beach vehicle bylaw. Nick Eade presented on behalf of the Board at the hearing on 24 November and has since provided additional information to the Hearing Panel.</p> <p>The Board lodged a submission on Variations 1 & 2 (Aquaculture) to Marlborough Environment Plan. The Board was not able to be represented at the hearing in November.</p> <p>Advice was provided to the Department at the February meeting on the protection of the rare Nelson Cave Spider (<i>Spelungulae cavernicola</i>) in Kahurangi National Park. The Board supported the proposal to close access to the Crazy Paving Cave, which is important habitat for the spider to enable</p>

¹ This section should include conservation board functions relating to statutory functions under section 6M of the Conservation Act

			<p>monitoring to take place. The Board was pleased to see the cave was closed to visitors from 1st June 2022 for 12 months.</p> <p>Damage being caused by access to the Riuwaka Cave (Simply Sumpless) in Kahurangi National Park was discussed at the May meeting. The Board supported the iwi view to close the cave as an interim measure until further discussions are held with iwi on how best to protect the cave's values.</p> <p>Feedback is provided to the Department at each meeting on matters covered in the regular 'Status Report' board paper.</p>
3.2	Provide advice on proposed changes of status of nationally or internationally important areas, including stewardship land.		<p>A paper on the stewardship land re-classification work was presented to the December meeting. The Board formed a working group which worked together with the Iwi Komiti to form a response to the legislative change proposals. The submission was lodged on 18 March 2022 accompanied by a covering letter.</p> <p>The Board has received regular updates on the stewardship land reclassification project underway in the region and is keen to be involved in this work.</p> <p>Board members have attended iwi hui on stewardship land.</p>
3.3	Enhance relationship with Fish and Game on matters of mutual conservation interest.		<p>A hui was held with Fish and Game at the Ngāti Koata offices in July 2021.</p>

4 Advocacy and engagement, kanohi ki kanohi

Board objective

Pursue all reasonable opportunities to advocate for conservation and participate in statutory planning processes.

Planned Board activities, success measures and key milestones

	Action	Status	Progress Commentary
4.1	Advise DOC on conservation concerns and successes in their local communities - what's happening on the ground / the local flavour.		At each Board meeting members share news from networking within their communities and this is recorded in the minutes.

			<p>Murray Poulter has represented the Board on the Tasman Environmental Trust. Nick Eade represents the Board on the Molesworth Steering Committee. Both members provide report-back at Board meetings. Emma Newcombe and Aneika Young are involved in the development of the Tasman BioStrategy with Tasman District Council.</p>
4.2	Support and strengthen the activities of, and collaboration between, local conservation groups.		<p>Tasman Environmental Trust's (TET) Sky Davis attended the August meeting, and the Board sent a letter of thanks for the work they do. The role of a replacement member on the TET Board was discussed at the February 2022 meeting, to replace Murray Poulter when he retires from the Board in June.</p> <p>Nick Eade attended the Environmental Defence Society conference and reported back to the Board in October.</p> <p>The Board met with the Healthpost Nature Trust in Collingwood on 3 and 4 May 2022. The Trust led the Board on a field trip highlighting its recent accomplishments in the Farewell Spit area.</p>
4.3	Provide comment or submissions on policy or strategic consultations in line with Board priorities.		<p>Submissions have been lodged on:</p> <ul style="list-style-type: none"> • Marlborough District Council's proposed East Coast beach vehicle bylaw; and • Aquaculture Variations to the Marlborough Environment Plan; and • Stewardship Land legislative changes • Conservation Management and Processes Bill. <p>Nick Eade attended the hearing on the proposed East Coast beach vehicle bylaw. Further information on ecological values was provided to the hearing panel.</p>

PART B: GENERAL EXPECTATIONS

5 Working with each other and the Department

Board objective:

Board members will awhi, aroha and tautoko each other. We respect each other, listen, care about each other and are kind. We maintain good working relationships and open dialogue with DOC staff in order to engage strategically in conservation for the region.

Planned Board activities, success measures and key milestones

	Action	Status	Progress commentary
5.1	Board leadership team will work with DOC's Statutory Manager and BSO to set meeting agendas.		The Board chairs meet with the Statutory Manager and BSO prior to each meeting to set the meeting agenda. The Board has a good working relationship with Department staff and appreciates the advice provided.
5.2	Board leadership team and DOC Operations Director meet at least annually to review and provide feedback on Board performance.		<p>The Board's leadership team (Murray and Aneika) met with Roy Grose, Operations Director and Jo Gould, Statutory Manager and Samantha Garrett, Board Support Officer on 29 June 2022.</p> <p>Overall the reflection was the Board is focused at the right level (strategic rather than operational) and the Board culture is positive.</p> <p>Key areas of improvement for next year are:</p> <ul style="list-style-type: none"> • Consider communication with community as part of Work Plan for next year. • Meetings are often very full and time-pressured. Manage timing better and allow more time for a greater depth of discussion • Could get functional items (correspondence, financial reports) out of the way quickly and leave time for quality discussion on more important matters.
5.3	Monitor the health, safety, hauora, wellbeing and workloads of Board members.		The check-in round at each Board meeting contributes to this action and helps members connect at a personal level.
5.4	Board leadership team attend annual Chairs conference and report back to the Board.		Murray Poulter attended the Chairs conference and provided a report-back to members. Aneika Young was unable to

			attend the conference due to another commitment.
5.5	Review Board's Health, Safety and Wellbeing Policy at least annually.		Revisions to the Board's Health Safety and Wellbeing Policy were agreed at the 30 June 2022 meeting.

6 Taking account of Ministerial priorities

Board objective:

Work towards terrestrial, freshwater and marine biodiversity protection

Planned Board activities, success measures and key milestones

	Action	Status	Progress commentary
6.1	Actively engage with our communities to strengthen connection and understanding of biodiversity protection in the face of a changing climate, economy and resource pressures.		<p>The Tasman Environmental Trust presented on its work at the Board's August meeting.</p> <p>Board members attend regional Biodiversity Forum meetings.</p> <p>The Board met with Healthpost Nature Trust during its field trip in May.</p>
6.2	Board input to management plans has a biodiversity focus based on Te Mana o Te Taiao.		<p>Board has had no input into specific management plans over the last year.</p> <p>The Board held a discussion with DOC's Policy Team on the Conservation Management and Processes Bill and the Wildlife Act review.</p>
6.3	Ensure tikanga, kawa and mātauranga of biodiversity is incorporated into strategies and plans.		<p>Board has had no input into strategies or plans over the last year.</p> <p>The Board lodged a submission on the Conservation Management and Processes Bill.</p>
6.4	Strive for sustainability – Board members and Board activities seek to reduce emissions and impacts.		<p>Car-pooling to Board meetings is actively encouraged and carried out. The DOC van was frequently used as transport.</p> <p>Two Board members have opted to receive electronic copies of papers only.</p> <p>Murray Poulter presented information on the Board's carbon emissions at the February meeting. All members understand how reductions can be made.</p>

7 Working with adjoining conservation boards and the Authority

Board objective:

Liaise with neighbouring conservation boards in order to keep informed about cross boundary issues and other matters of mutual interest.

Planned Board activities, success measures and key milestones

	Action	Status	Progress commentary
7.1	Board members will be appointed as liaison roles with neighbouring Boards (West Coast Tai Poutini Board and Canterbury Aoraki Board).		Harvey Ruru is the liaison person with the West Coast Tai Poutini Board. Lorraine Hawke is the liaison person with the Canterbury Aoraki Board.
7.2	The liaison person aims to attend one meeting of the neighbouring Board (in person) annually.		Harvey Ruru attended the West Coast Tai Poutini Board meeting in July 2021.
7.3	Joint meetings with neighbouring Boards will be held every two or three years.		A joint meeting with the Canterbury Aoraki Board was planned for December 2021 in Kaikōura, but this was postponed (Largely due to the impact of Covid Level 2 restrictions, including not being able to meet at Takahanga Marae). A joint meeting is planned with the West Coast Board in Karamea, October 2022.
7.4	Hold a South Island hui with other Māori Board members.		Māori Board members in the South Island have been identified. The Iwi Komiti will contact them directly to propose a South Island hui.