

*Te Rūnanga Whakauka o Kahurangi
ki Kaikōura
Nelson Marlborough Conservation Board
Annual Report 2018-19*



Te Rūnanga Whakauka o Kahurangi ki Kaikōura Nelson Marlborough Conservation Board Annual Report 2018-19

**Presented to the New Zealand Conservation Authority
pursuant to Section 6 (O) of the Conservation Act 1987**

This report is presented to the New Zealand Conservation Authority as required by the Conservation Act and is distributed to interested parties. Members of the public are welcome to attend Conservation Board meetings. If you would like more information on the Nelson Marlborough Conservation Board please go to <https://www.doc.govt.nz/about-us/statutory-and-advisory-bodies/conservation-boards/nelson-marlborough/> or contact the Board Support Officer at the Department of Conservation in Nelson by phone 03 546 9335 or email nelsonmarlboroughBoard@doc.govt.nz

Published by
Nelson Marlborough Conservation Board
c/- Department of Conservation
Private Bag 5
Nelson 7042

ISSN 1176-7065 (print)
ISSN 1178-4113 (online)

Photographs

Front Cover: Board members and DOC staff with Molesworth Steering Committee members, Molesworth Station April 2019 L-R Gina Solomon, Barbara Stuart, Phil Bradfield, Graeme Mulligan, Jo Gould, Katie, McNabb, Murray Poulter, Andrea Goodman, Aneika Young, Bev Doole, Rima Piggott, James Guild, Roy Grose.

Back cover: Board members at February 2019 meeting

Both photos: Jacqui Irwin DOC

DOC-CM-5962858

CONTENTS

1.	Chairperson’s report	5
1.1.	Korero from the Chair, Gina Solomon.....	5
1.2.	Board strategic plan	6
1.3.	Te reo / tīkanga māori.....	6
1.4.	Board acknowledgements	7
1.5.	Presentations to the Board.....	7
1.6.	Health and safety.....	7
1.7.	Networking and learning.....	7
1.8.	Board leadership.....	8
1.9.	Challenges and issues for the future	8
1.10.	Thank you.....	9
2.	Introduction.....	11
3.	Conservation Board functions and powers.....	12
3.1.	Board functions under the Conservation Act 1987	12
3.2.	Board powers under the Conservation Act 1987.....	12
3.3.	Board functions under the National Parks Act 1980.....	12
4.	Nelson Marlborough Conservation Board Region.....	13
5.	Board Membership	16
5.1.	Board members profiles.....	16
5.2.	Board Committees and Representation.....	18
	Representation.....	19
	Liaison Roles.....	19
6.	Board Meetings.....	19
6.1.	Attendance.....	19
6.2.	Special Events.....	21
7.	Statutory activity.....	21
7.1.	Conservation Management Strategy (CMS).....	21
7.2.	Management plans.....	22
	Implementation monitoring	22
7.3.	Other Conservation Boards liaison	23
7.4.	New Zealand Conservation Authority liaison	23
8.	Community advocacy and involvement	23
8.1.	Community awareness and visibility.....	24
8.2.	Training for members.....	24
9.	Strategic plan and report-back on actions.....	25

1. Chairperson's report

1.1. Korero from the Chair, Gina Solomon

E nga mana, e nga reo, e nga maunga, e nga awa
Nga waka ki tenei rohe Kurahaupo, Tokomaru, Tainui, Takitimu tena koutou
Nga whānau, hapu, iwi, mo nga kaitiaki, tena tatou katoa

*All authorities, all voices, all mountains, all the rivers
To the many waka within the region, Kurahaupo, Tokomaru, Tainui, Takitimu, greetings
To the kaitiaki, greetings to you all*

I am honoured to present my second report as Chair of Te Rūnanga Whakauka o Kahurangi ki Kaikōura, the Nelson Marlborough Conservation Board.

E te Whānau, I have been thinking a lot about my Chair's message for this year's Annual Report and mostly I have felt very sad and dejected about what I might say. I have been lost for words in this space.

I am feeling very gloomy about our beautiful whenua, our awa, our moana, our place, our Aotearoa, our whānau, ourselves. We are killing it! We are not doing enough to save it. All the experts are saying it, even if you do question some of the experts, the evidence is there for all of us to see if we really are honest enough to look and want to see it.

Our DOC staff, our fantastic community groups, land owners, other organisations and individuals are pouring millions into battling to eradicate nasty predators, weeds and pollutants, to protect our flora, fauna, waterways and water species. But it is not enough. We are hoping technology will save the day, and I believe it will, but we can't wait. Our precious species are dying, and we are losing this battle. It hurts to think about what precious species are gone forever or are about to become extinct.

Climate Change is here. It is affecting every one of us and our planet every day, every minute. It is the biggest environmental challenge we all face today. It is affecting our weather, leading to more fires. It is affecting our native environments, ecosystems, and species. The ice is melting the sea level is rising. Can you imagine life without polar bears or our own tuatara? Warmer temperatures mean fewer female tuatara will hatch, threatening the survival of our largest reptile! We have biosecurity issues, infrastructure and health impacts – we are not doing enough. For those of you who are in denial and pointing the figure at others and their emissions – wake up, you must take responsibility as do we all, NOW!

I was brought up with values, like many others, that said we must leave this place better than we found it. We haven't done this! This place is worse than when I remember how it was when I was a little girl. We must do something now! We need to do much more! I can't load all of this conservation crisis on my beautiful mokopuna and neither can you on your beautiful grandchildren and your future generations to come. What sort of Aotearoa are we leaving to our kids?

I don't have enough answers or solutions. I can't do it on my own; we, together, are struggling now.

We must come together whānau, truly come together to save our whenua, to save our awa, to save our moana, to save our place, to save our Aotearoa, to save our whānau, to save ourselves, to make a better place for our children's children.

We must be truly kinder to each other. We must care for each other. We must care for our place, for our land and all that it holds. We must work smarter together to find solutions.

We must stop blaming each other: "it's farmers' fault, it's iwi, it's forestry, it's the tourist. The science is wrong. I'm doing my bit, over the fence is the problem, they aren't doing their bit. DOC is the problem. It's the Government, they are the problem..."

We have a Green Party Minister of Conservation. Many are thinking surely this Minister will save the day. This Minister is working very hard to do as much as she can outside Cabinet. But it is not enough.

I hear about this 'whole of government' approach. About time, I am thinking, but it feels like not enough is happening in that space. We can't wait 50 years for 'whole of government' to get itself going and to start communicating and working together.

Saving our environment is a 'whole of government' issue and as voters we should be demanding that all our representatives stand up and really tackle the issues, not just the Minister of Conservation. All our politicians, regardless of what party they belong to, what portfolio they hold, must unite to tackle this. Wake up whānau, this is all our problem. We as individuals must do our bit too. Reduce our plastic consumption. Reduce our waste. Reduce our own individual footprint, collectively as New Zealanders. We must come together. We must work together to save our place, to save ourselves.

Whew whānau, that was a lot to unload but we are in a crisis right NOW! On a more positive note, the following is what our local heroes, my Board and our DOC whānau have been up to.

1.2. Board strategic plan

Over the past year we extended our strategic plan and found that we had achieved more than had been aimed for, which is absolutely fantastic. We will be reviewing and refreshing our strategic plan going forward and will be looking for new challenges and ways we can extend ourselves further.

1.3. Te reo / tikanga māori

We have continued to challenge ourselves to include te reo in all our meetings, focusing on understanding placenames and practising pronunciation. I thank my Board members for their willingness and great efforts in this space.

1.4. Board acknowledgements

We farewelled our valued Board member, Amelia Taylor, at our May 2019 meeting. It is always a sad time when Board whānau leave; there is always a huge gap left. Amelia can be proud of her achievements on the Board and the efforts she put in. We welcome and congratulate new members on to our Board. Murray Poulter will continue his time on the Board. Murray has been a wealth of knowledge and his science expertise is much appreciated. A warm welcome to Lorraine Hawke, who is a Ngāi Tahu representative from Kaikōura. We look forward to working with Lorraine.

1.5. Presentations to the Board

Presentations from the community have raised our awareness of some key issues in our rohe, including:

- The urgent need for control of wilding conifers in South Marlborough - raised by the Marlborough Tramping Club
- Future management of Molesworth and opportunity for biodiversity protection - Forest & Bird
- A proposal for Special Legislation to protect the Marlborough Sounds marine environment - Marlborough Girls College Marine Team.

1.6. Health and safety

We continued to take our health and safety obligations seriously, including for all of our meetings and field trips, and are always looking for areas where we can improve.

1.7. Networking and learning

The Board was fortunate to have a specially designed Kaikōura Whale Watch trip during their May 2019 Board meeting. We thank Whale Watch Kaikōura for this fabulous opportunity. It was a wonderful time for the Board to experience and learn about a tourist operator and concessionaire, Kaikōura marine mammals, the various tools used in the Kaikōura (Te Tai o Marokura) Marine Management Area, e.g. mataitai, taiapure, rāhui, marine reserves etc. and about the marine area itself. Locally, we organised for other conservation groups and individuals in the Kaikōura area to join the Board for their excursion.

This was a wonderful opportunity for networking and to hear about what is happening locally. We were very fortunate to have Tā Mark Solomon give a korero on the whakapapa of the area and why both the land and coastal space is so important to Ngāti Kuri. We had an update on the work of Te Korowai o Te Tai o Marokura from its Chair, Rachel Vaughan. Ted Howard, Chair of our Tītī/Huttons Shearwater Charitable Trust, spoke about our precious Tītī. Others present on the trip were members of Te Korowai o Te Tai o Marokura, Kaikōura Zone Committee, Kaikōura Ocean Research Institute, Kaikōura District Council Deputy Mayor, Kaikōura Marine Guardians, local Forest and Bird members, Debs Martin from the regional office of Forest and Bird, representatives of the recreational and commercial fishing sector, and local iwi to name a few.

It was great to also include members of North Canterbury Transport Infrastructure Recovery (NCTIR) who are working on SH1 road and rail recovery. This was a great opportunity for them to see first-hand why our coastal space is so important, particularly given the effects of the work happening on our new highway after the Kaikōura earthquake.

1.8. Board leadership

Our leadership approach has continued to work well. The Deputy Chair was involved in discussions between board meetings and when setting the agendas. The Chair and Deputy korero together on many topics to help support the Board. This leadership team approach will be reinforced with the Chair and Deputy both attending the Board Chairs' hui in August 2019.

1.9. Challenges and issues for the future

Our CMS Review continues to be delayed due to limited capacity and priority-setting beyond our control in the Northern South Island region. This is not good enough. Our Board urges the Department to urgently look at immediately correcting this so that we can start the process of reviewing our 2006 CMS which is outdated by 13 years!

The Molesworth Management Plan review lies ahead, as well as other issues needing the Board's attention including:

- understanding S4 of the Conservation Act and implications of the Ngāi Tai ki Tāmaki decision for the Board and Department
- biodiversity loss
- tourism impact – including Ōparara development and managing numbers in Abel Tasman National Park, and
- implementing Kotahitanga mō te Taiao strategy.

Severe weather events and forest fires in our region over the past year highlight the importance of planning for climate change. Issues include how we maintain safe access to remote places, protecting assets along our extensive coastlines, and the effects of climate change on species survival.

As a Board we are increasingly aware of the pressure on the Department to manage the effects of the surge in tourist numbers on conservation areas with demand on infrastructure, biodiversity and the impact on our ability to enjoy natural quiet and open spaces. We welcome the return of a stronger advocacy role by the Department and the Board is committed to ensuring that Departmental resources are dedicated to protecting species, biodiversity and recreational opportunities in balance with the environment.

There is a risk that the Department's resources are being diluted by having to manage and mop up the effects of tourism. We seek a greater emphasis on determining carrying capacity and then capping numbers to ensure conservation and recreational values are maintained – i.e. control rather than just manage. Conservation must come first.

1.10. Thank you

I want to express my heartfelt thanks and love to:

- My fantastic fellow board members. Each and every one of you comes to the table ready and able and you all work incredibly hard. You all come in your own way ready to save the planet at every meeting. Every meeting I learn something valuable from each of you. You all are incredibly awesome. Thank you.
- Roy Grose, who ably leads our DOC whānau in our Northern South Island region. Roy's kind, caring, pragmatic and strong leadership is very much appreciated and is the reason why our waka always sails proudly and strong in the many storms and wild currents that we face every day in our area.
- Barney Thomas, our DOC Pou Tairangahau. So proud and grateful for our special Barney who provides leadership, guidance and tikanga Māori support. He works very hard to guide us and keep us culturally safe in the work we do. I also thank Barney for the work he does in helping us to work more collaboratively with iwi and whānau. Much love to you Barney.
- Jo Gould, our DOC Statutory Manager. Jo's experience, guidance and support to the board is amazing. We value her knowledge, input and advice around our board table.
- Kath Inwood, our previous Board Support Officer. Kath provided board administrative support to our board but was seconded in 2018 for a Marketing role in the National Office. We were very sad to see Kath go because she was so incredible. I cannot express enough how important this role is. Our board members are incredibly busy in their own lives and the board support role is crucial in helping board members to be able to function well at board meetings and to do their job. Kath made life incredibly easier for members. I thank her dearly for this and wish her well in her new adventures.
- Jacqui Irwin, who took over the Board Support role in February 2019 and very capably enabled a smooth transition. Jacqui has been exceptional in this role and a wonderful support to our board and to me as the Chair. Thank you very much, Jacqui.
- To the Northern South Island region DOC whānau: huge thanks to our DOC staff. Your hard work and efforts in our area are amazing and I thank each one of you. You are all stars! The Board really appreciates meeting you when we visit your area and hearing about the great work you are doing. Thank you all so much.
- Minister of Conservation, Hon Eugenie Sage. Thank you, Minister, for all your hard work and great efforts. We commend you for all the work you have done to date. You are an impressive Minister who works very hard and we are grateful for this.
- To the many community groups and individuals who are working out there in our communities killing weeds and trapping pests, planting trees, and supporting conservation. You all are absolutely fantastic, and our heroes. The Board loves seeing you in our Public Forums and hearing about the wonderful things you are doing. We value your contributions. We appreciate the time and effort you all put in. We urge you to keep coming to see us, keep giving us your views and solutions. Thank you all so very much.

I will leave you with two whakatauki. Although these are both Māori proverbs, they are not specific to just Māori, they are for all of us and I hope they give you strength and a hopeful future like they do for me:

“Kia ahu whakamua, me tītiro whakamuri”
*To go forward, we always look to the past, we go back,
Going back helps drive us to move forward*

“Mo tātou, ā, mō kā uri, ā muri ake nei”
For us, and our children after us

Ngā mihi



Gina Solomon
Chair
August 2019



Whakamarama Range, Kahurangi National Park from Collingwood, Golden Bay
Photo: L Solly, DOC

2. Introduction

Section 6 (O) of the Conservation Act requires Conservation Boards to provide the New Zealand Conservation Authority (NZCA) with an annual report as soon as practicable after 30 June each year. In recognition of this requirement the Nelson Marlborough Conservation Board submits this annual report.

Conservation Boards are independent advisory bodies, established by statute. They represent the community and offer interaction between communities and the Department of Conservation (the Department), within their area of jurisdiction.



Cape Lambert Scenic Reserve and Cook Strait, Outer Marlborough Sounds
Photo: B Doole, Nelson Marlborough Conservation Board

3. Conservation Board functions and powers

The Nelson Marlborough Conservation Board is appointed by the Minister of Conservation under section 6 (P) of the Conservation Act 1987. Board functions and powers, which enable the Board to carry out those functions, are specified in the Act.

3.1. Board functions under the Conservation Act 1987

The Conservation Act, section 6 (M), specifies that the Board's functions are to:

- recommend the approval of conservation management strategies, and the review and amendment of such strategies;
- approve conservation management plans, and the review and amendment of such plans;
- advise the Conservation Authority and the Director-General on how conservation management strategies and plans will be put into practice;
- advise the Conservation Authority and the Director-General on any proposed changes to the status or classification of any area of national or international significance;
- advise the Conservation Authority and the Director-General on any other conservation matter relating to any area with the jurisdiction of the Board;
- liaise with Fish and Game Councils on conservation matters; and
- carry out other powers delegated to it by the Conservation Minister, under the Conservation Act or any other Act.

3.2. Board powers under the Conservation Act 1987

Section 6(N) subsection (1) of the Conservation Act specifies that "Every Board shall have all such powers as are reasonably necessary or expedient to enable it to carry out its functions".

Without limiting the generality of subsection (1), each Board may –

- a) Advocate its interests at any public forum or in any statutory planning process; and
- b) Appoint committees of members and other suitable persons, and delegate to them functions and powers.

The power conferred by subsection (a) above shall include the right to appear before courts and tribunals in New Zealand and be heard on matters affecting or relating to the Board's functions.

3.3. Board functions under the National Parks Act 1980

There are three national parks within the Board's region: Kahurangi National Park, Nelson Lakes National Park and Abel Tasman National Park. The Board sets up committees when the management plans for these are being reviewed. The Board liaises with the West Coast

Tai Poutini Conservation Board around cross-boundary issues relating to Kahurangi National Park, particularly for the Ōparara Basin.

The Board's functions under this Act are:

- a) to recommend management plans, and the review or amendment of such plans, for parks within the jurisdiction of the Board in accordance with sections 45 to 47:
- b) to consider and determine priorities for the implementation of management plans for national parks:
- c) to make recommendations to the Minister for the appointment of honorary rangers under section 40:
- d) to review and report to the Director-General or the Authority, as appropriate, on the effectiveness of the administration of the general policies for national parks within the jurisdiction of the Board:
- e) to give advice to the Director-General or the Authority—
 - i. on the interpretation of any management plan for a park; and
 - ii. on any proposal for the addition of land to any national park or the establishment of a new national park; and
 - iii. on any other matter relating to any national park, — within the jurisdiction of the Board.

4. Nelson Marlborough Conservation Board Region

The Nelson Marlborough Conservation Board's area of jurisdiction covers all of the DOC Northern South Island region, with the additional oversight of the whole of Kahurangi National Park – some of which lies within DOC's Western South Island region.

The Board's area also includes Abel Tasman and Nelson Lakes National Parks, Mt Richmond Forest Park, Ka Whata Tu o Rākihōuia Conservation Park, Molesworth Station, and important nature reserves such as Takapourewa (Stephens Island) and Farewell Spit. The area also extends out to the 12-nautical mile limit with respect to coastal and marine issues, and out to the 200-nautical mile limit with respect to protected species.

There are five Marine Reserves in Nelson Marlborough: Long Island Kokomohua, Westhaven Te Tai Tapu, Tonga Island, Horoirangi and Hikurangi.

During the year, the Board confirmed its lead role in management planning for Molesworth Recreational Reserve, although a small part of Molesworth falls within the Canterbury Aoraki Conservation Board area.

There are about 750 historic places, both Māori and European, including archaeological sites, historic backcountry huts, a whaling station, and cob cottages in South Marlborough.

Species protection programmes in the area cover Hector's dolphin, tuatara, endemic frogs, *Powelliphanta* snails, great spotted kiwi, takahē, Hutton's shearwater, tītī/Huttons

shearwater, weka, kākā, black fronted tern and whio (blue duck) and include a ‘mainland island’ at Nelson Lakes, the Rotoiti Nature Reserve Programme.

The Board’s area of jurisdiction also covers some of New Zealand’s best-known and most-loved visitor sites, including the Kaikōura Peninsula, Abel Tasman Coast Track, the Heaphy Track, Waikoropupū Springs, Wharariki Beach and the Queen Charlotte Track. There are over 300 other walks and tracks totalling more than 1,950 kilometres.

The large number of issues of interest to the Board include:

- Protecting biodiversity
- Ecosystem management and management of plant and animal species
- Management of recreational facilities
- Management of historic sites
- Permissions activities, including those relating to recreation and tourism activities, grazing, industrial use, baches, filming, and gravel extraction
- Marine protection.



Board members and guests, Whale Watch trip, Kaikōura May 2019
Photo: J Irwin, DOC

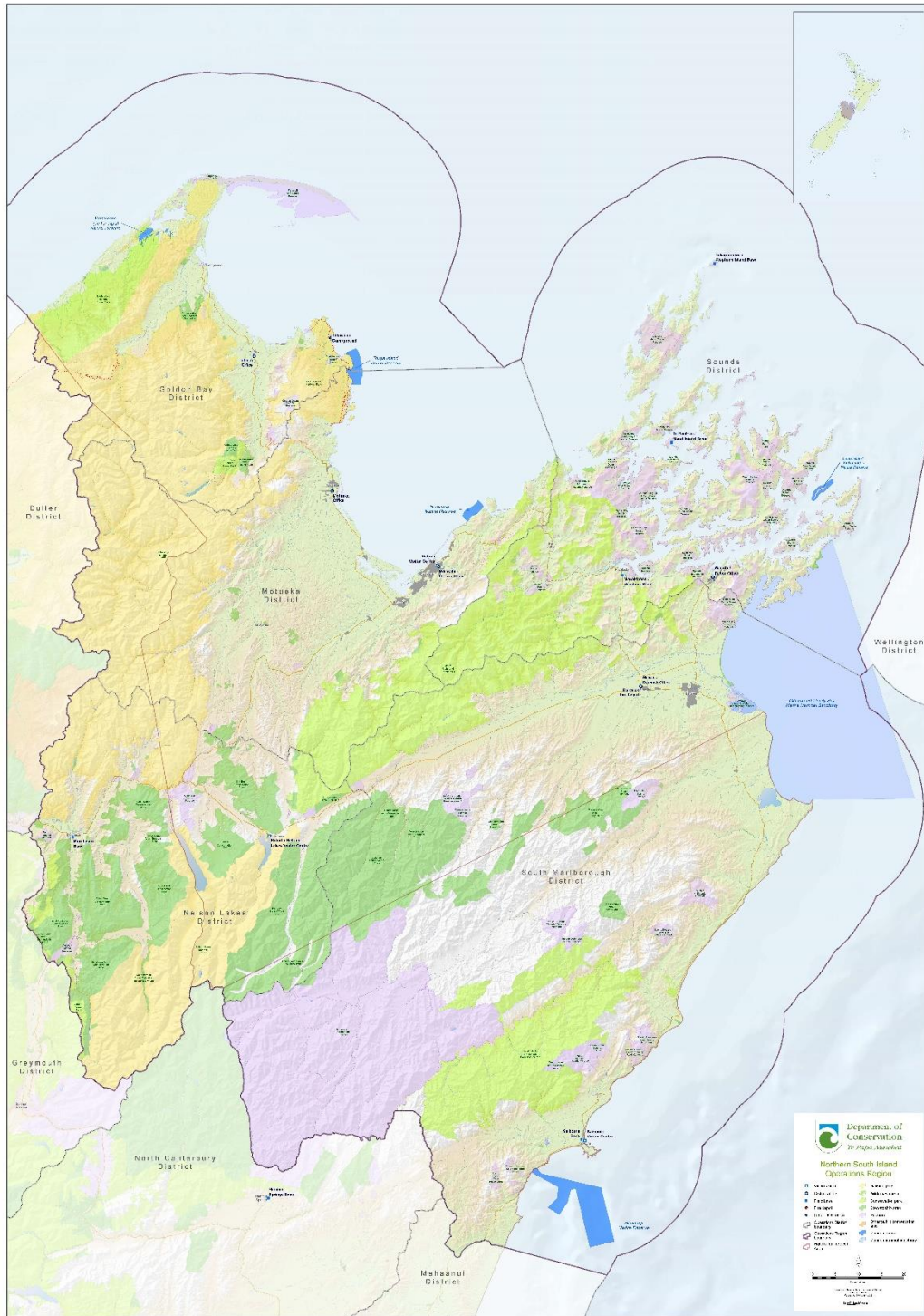


Figure 1: Nelson Marlborough Conservation Board area aligns with the DOC Northern South Island region, above, with the addition of policy and planning responsibility for the Molesworth and the whole of Kahurangi National Park including the recent Mokihinui addition.

The Board area includes the rohe of the eight iwi of Te Tau Ihu (Te Ātiawa, Ngāti Rārua, Ngāti Koata, Ngāti Kuia, Rangitāne, Ngāti Toa Rangatira, Ngāti Apa ki te Rā Tō, and Ngāti Tama) and the Ngāti Kuri and Ngāti Waewae hapu of Ngāi Tahu. There are 11 Marae within the Board area.

5. Board Membership

There were 11 Board members for the reporting year ended June 2019, the previous year's vacancy having been filled in mid-2018.

The terms of office of two members expired in 2018 – Steve Knight and Joy Shorrock - and on 30 June 2019 for Amelia Taylor from Kaikōura. The Board was carrying a vacancy from the previous year, so there were three new appointments in 2018: Harvey Ruru, Ian Alach and Aneika Young. Gina Solomon was re-elected as Chairperson and Bev Doole was re-elected Deputy Chairperson.

Under Section 6P of the Conservation Act, a Board whose area of jurisdiction is partly within the Ngāi Tahu claim area must consist of no more than 12 persons, with at least 1 person appointed on the nomination of Te Rūnanga o Ngāi Tahu. The Nelson Marlborough Conservation Board currently has two members who were appointed on the nomination of Te Rūnanga o Ngāi Tahu.

The following table lists the membership of Nelson Marlborough Conservation Board between 1 July 2018 and 30 June 2019, their terms of office and years of service.

Board member	Area	Term start	Term end	Term served (years)
Gina Solomon (Chair) (Ngāi Tahu appointee)	Kaikōura	16/10/2006	30/06/2021	13
Bev Doole (Deputy)	Blenheim	01/07/2014	30/06/2020	5
Ian Alach	Takaka	01/07/2018	30/06/2021	1
Andrea Goodman	Motueka	01/07/2017	30/06/2020	2
Katie McNabb	Picton	01/07/2014	30/06/2020	5
Rima Piggott	Motueka	01/07/2017	30/06/2020	2
Murray Poulter	Motueka	01/07/2016	30/06/2019	3
Harvey Ruru	Nelson	01/07/2018	30/06/2021	1
Barbara Stuart	Nelson	01/07/2017	30/06/2020	2
Amelia Taylor (Ngāi Tahu appointee)	Kaikōura	01/11/2013	30/06/2019	6
Aneika Young	Nelson	01/07/2018	30/06/2021	1

5.1. Board members profiles



Gina Solomon (Chairperson) of Kaikōura was appointed in 2006 on the recommendation of Te Rūnanga o Ngāi Tahu. Her whakapapa connects her to Ngāi Tahu, Kurahaupō, Ngāti Koata, Te Ātiawa and Ngāti Toa. Gina has held various positions within Te Rūnanga o Kaikōura over the past 25 years. She advocates for and promotes iwi and conservation values. Gina is Administrator/Secretary and a member of Te Korowai o Te Tai o Marokura (Kaikōura Coastal Marine Guardians) and is a Kaikōura Marine Guardian. She is also a Director on the Queen Elizabeth II National Trust, a member of the Nature Heritage Fund, and is on the Forestry Ministerial Advisory Group and Deputy Chair of the Kaikōura Zone Committee under the Canterbury Water Management Strategy. She is an RMA Commissioner and is passionate about advocating for conservation, the environment and outcomes for the good of the community.



Bev Doole (Deputy Chair) of Rarangi near Blenheim was appointed to the Board in July 2014. Bev is a former journalist now working in communications and project management, specialising in the environmental sector. She is experienced in writing for resource management plans, policy documents and State of the Environment reporting. She is highly knowledgeable about conservation issues in the region, with a particular interest in the Marlborough Sounds. Bev is co-ordinator for the Marlborough Environment Awards and is a member of the Cawthron Institute Trust Board. Her outdoor recreation interests are walking, gardening and boating in the Sounds.



Ian Alach from Golden Bay was appointed in July 2018. He lives in the Takaka Valley and is a self-employed small farmer and conservation consultant. He has extensive experience supervising projects on conservation land. Ian has carried out wilding conifer control as a volunteer on Molesworth for many years, as well as on Beeby's Knob in Mt Richmond Forest Park. He is a member of the Golden Bay Alpine Tramping Club and secretary of the Takaka Dog Trial Club.



Andrea Goodman of Ngatimoti, near Motueka, was appointed to the Board in July 2017. Andrea works in community engagement and human-wildlife conflict for the Kea Conservation Trust. She has a strong scientific approach with a BSc in Zoology, MSc in Ecology and Post-Graduate Diploma in Wildlife Management. Her interests include tramping, walking, gardening and Enviroschools.



Katie McNabb of Picton was appointed to the Board in July 2014. Katie is a boating education tutor and member of the Coastguard Boating Education Services Board. She has experience in Board membership, policy and planning. She was involved in the restoration of Perano whaling station. Her outdoor recreation interests are sailing, skiing, biking and river boating.



Rima Piggott of Motueka was appointed to the Board in July 2017. Rima is a home health support worker and has a certificate in Horticultural Management. Rima has broad community involvement and is a Trustee for Te Rūnanga o Ngāti Rārua and a member of the Manawhenua ki Mohua Trust. She enjoys tramping, fishing, hunting, diving, gardening and gathering kai moana. Rima is affiliated to Ngāti Rārua, Te Ātiawa, Ngāti Toa Rangitira, Ngāti Ranginui, Ngāiterangi and Ngāti Tūwharetoa.



Murray Poulter of Tasman, near Motueka, was appointed to the Board in July 2016. Murray has extensive experience in scientific research and management, and most recently was the Chief Scientist Atmosphere, Climate and Hazards for NIWA. He enjoys walking, hiking, cycling, canoeing and fishing. He is the Board representative on the Tasman Environmental Trust and is part-owner of a QEII covenanted area of native bush.



Archdeacon Emeritus TeHawe (Harvey) Ruru QSM of Nelson was appointed in July 2018. Harvey is Chair of Te Ātiawa o te Waka a Māui Turst and has had a long involvement as a claims negotiator in the Waitangi Tribunal Claims settlement process. In 2016 he retired after 14 years as NZ Police Iwi Liaison Officer and Coordinator. Earlier in his career Harvey was a Registered Comprehensive Nurse specialising in Mental Health nursing. Harvey is also an Anglican priest. He has wide ranging governance experience. His iwi affiliations are Te Ātiawa, Ngāti Tama, Ngāti Mutunga, Ngāti Maru, Ngāti Toa Rangitira, Kati Mamoe and Moriori.



Barbara Stuart of Cable Bay, near Nelson, was appointed to the Board in July 2017 and is a Justice of the Peace. Barbara brings a strong connection to farming and engagement with rural communities. She has a professional background in facilitating and fostering sustainable land management and conservation outcomes on private land. She has also played a key role in promoting walking access across the region and is owner operator of a family farm and holiday park. Barbara enjoys walking, history, native plants and writing.



Amelia Taylor of Kaikōura is a nominee of Te Rūnanga o Ngāi Tahu. She is Kaikōura Project Coordinator for Red Cross NZ and Director/Owner of Noa Naturals Kaikōura. Amelia is a Justice of the Peace. She is a whale watch sea crew guide and has worked in the hospitality industry. She is involved in many local environmental groups with interests in beach and stream protection, species recovery and caring for birds. She is currently studying the use of New Zealand plants in medicine. She is affiliated to Ngāi Tahu, Ngāti Kuia, Ngāti Koata, Te Ātiawa, and Ngāti Toa.



Aneika Young of Nelson was appointed to the Board in July 2018. Aneika is Kaiāwhina Māori and a Māori Business Development environmental scientist and researcher for Cawthron Institute in Nelson. She has a background as a consultant in Māori Resource Management and wide interests in outdoor recreation, including as a walk and kayak guide in Abel Tasman National Park. Aneika is an iwi representative on the Abel Tasman Birdsong Trust, is a Trustee of Te Āwhina Marae and an alternate Director for Ngāti Rārua Te Ātiawa Trust on Tiakina te Taiao. Aneika has iwi affiliations with Ngāti Rārua ki Motueka, Te Ātiawa ki Te Tau Ihu, Ngāti Ruanui, Ngāti Koroki Kahukura, and Waikato Tainui.

5.2. Board Committees and Representation

Membership of Board committees was reviewed during the year.

The Board also formed working groups as needed, for example to provide feedback on consultation documents such as Predator Free 2050. Generally, working groups are dis-established once the task is complete. During the year, a new working group was established to focus on the proposed Ōparara development.

The full list of Committees and working groups, as at June 2019, was:

- **Stewardship Land Reclassification Committee** - Harvey Ruru, Andrea Goodman, Aneika Young, Ian Alach, and Gina Solomon.
- **Permissions Committee** - Katie McNabb (convenor), Murray Poulter, Ian Alach.
- **Iwi Committee** - Amelia Taylor, Gina Solomon, Rima Piggott, Andrea Goodman, Harvey Ruru and Aneika Young.
- **Molesworth Management Plan Review Committee** - Katie McNabb, Ian Alach, Amelia Taylor, Aneika Young and Gina Solomon.
- **Health and Safety Committee** - Amelia Taylor, Katie McNabb, Gina Solomon and Murray Poulter.
- **Ōparara working group** - Bev Doole, Ian Alach, Murray Poulter, Barbara Stuart, Amelia Taylor, Andrea Goodman and Coraleen White from the West Coast Tai Poutini Conservation Board.

- Hector’s and Maui Dolphins Threat Management Plan – Katie McNabb, Amelia Taylor.

Representation

The members listed below represented the Board on a range of related organisations.

Representation	Member
Molesworth Steering Committee	Steve Knight (former Board member)
Tasman Environmental Trust	Murray Poulter
Abel Tasman Foreshore Advisory Forum	Aneika Young
Long Island Kokomohua Marine Reserve Committee	Katie McNabb
Horoirangi Marine Reserve Committee	Barbara Stuart, Harvey Ruru, Aneika Young
DOC Community Fund assessment panel 2019	Murray Poulter, Andrea Goodman

Board representatives reported on the activities of the respective organisations at Board meetings.

Although Steve Knight retired from the Conservation Board 30 June 2018, he was appointed by the Minister onto the Molesworth Steering Committee until 30 June 2020. The Board confirmed Steve’s representation on behalf of the Board on the Molesworth Steering Committee.

The Marine Reserve Committees did not meet during the 2018-19 year.

Liaison Roles

Liaison with	Member
West Coast Tai Poutini Conservation Board	Barbara Stuart
Canterbury Aoraki Conservation Board	Amelia Taylor

6. Board Meetings

The Nelson Marlborough Conservation Board held six meetings during the reporting period. Board meetings are held across the region to enable members of the public to attend, as well as for Board members to understand issues across the region.

Meeting date	Location
9 August 2018	Motueka
11 October 2018	Kaikōura
13 December 2018	St Arnaud
28 February 2019	Nelson
12 April 2019	Renwick
23 May 2019	Kaikōura

6.1. Attendance

The table below summarises the number of Board meetings attended by members out of the total number of meetings held during the year. Attendances confirm that there is a high level of engagement by Board members, with apologies only for unavoidable absences.

Members attended other meetings and events in their role as Board members, including committee meetings and representative roles.

Board Member	Board meetings
Gina Solomon (Chair)	6/6
Bev Doole (Deputy)	5/6
Ian Alach	5/6
Andrea Goodman	6/6
Katie McNabb	6/6
Rima Piggott	5/6
Murray Poulter	6/6
Harvey Ruru	5/6
Barbara Stuart	5/6
Amelia Taylor	4/6
Aneika Young	5/6

Field Trips and site inspections

Two field trips provided an excellent opportunity for Board members to increase their knowledge of conservation issues across the region.

- On 12 October 2018, the Board had hoped to go on a Whale Watch trip in Kaikōura. Unfortunately, bad weather meant that the trip was postponed to May 2019.
- On 10 and 11 April 2019, the Board spent two days exploring Molesworth Station, hosted by James Guild and Graeme Mulligan from the Molesworth Steering Committee, and Jim and Tracey Ward, farm managers.



Board members and staff at Red Gate, Molesworth, April 2019. Photo: J Irwin, DOC

- On 24 May 2019 the weather proved to be much more benign and a large group of 48 in total, comprising Board members, whānau and guests from other groups enjoyed a morning on a Whale Watch tour. The boat trip provided an opportunity to network, learn about and explore local history, conservation efforts and the marine environment of Kaikōura.

6.2. Special Events

Board Chairs hui – Gina Solomon attended the August 2018 hui in Wellington.

Conservation Week volunteers' celebration – Murray Poulter, Andrea Goodman and Barbara Stuart attended, 20 September 2018.

Loder Cup Awards – Bev Doole attended the presentation to P McGowan, who was nominated by the Board, in Tauranga, September 2018.

Marlborough Environment Awards – Bev and Katie McNabb attended, March 2019.

Land Information NZ pastoral lease consultation meeting – Gina Solomon attended this consultation meeting in Christchurch, March 2019.

Kea Conservation partnership celebration – Andrea Goodman attended with DOC, Nelmac and the Kea Conservation Trust in May 2019.

Wānanga with Rangitāne on Te Pokohiwi – Gina Solomon, Ian Alach, Katie McNabb, Bev Doole, and Aneika Young attended a wānanga with Rangitāne at Ūkaipō near Blenheim on Sunday 16 June 2019.

7. Statutory activity

The Board receives a planning report from the Department at each meeting that summarises statutory work under way in the region, under the Resource Management Act and management planning under the National Parks Act and Reserves Act.

The Board receives implementation monitoring reports on all management plans and the Conservation Management Strategy throughout the year.

The Board did not undertake any formal advocacy under the Resource Management Act this year. However, the Board supported a call by a member of the public to protect the Nelson mineral belt. The Board asked the Department to include this issue when placing formal submissions on the applicable Resource Management Plans, and for the Department's conservation management planning processes.

The Board wrote to the Ministers of Conservation and Biosecurity expressing concern at the impact of wilding conifers on biodiversity, particularly in the Branch and Leatham valleys. The Board advocated for increased funding to control this threat to the region's biosecurity and landscape values.

7.1. Conservation Management Strategy (CMS)

The Board has expressed disappointment and frustration to the Department numerous times over the year that the anticipated CMS review had not yet been initiated. While the Board understands the intent to apply the outcomes and learning from a new iwi engagement system that is being developed by DOC and iwi, we feel the CMS review can no longer be delayed. We are mindful that there is other management plan work taking place in the region, described in section 7.3, as well as stewardship land re-classification to which both the Board and Department are committed. We want to see the Department fully

resourced to carry out our CMS review and both the regional staff and Board supported in this work. We want to see a sense of urgency applied to planning for and prioritising this kaupapa. The CMS is critical to strategically guiding the work of the Department in the region and our current CMS is very over-due for review as it was approved in 1996.

7.2. Implications of Ngāi Tai ki Tāmaki Supreme Court decision

The Board has been briefed on the Ngāi Tai ki Tāmaki Supreme Court decision and is very keen to better understand the implications of the decision on how we work with iwi in our region. We sense this will have far-reaching impact, particularly for our CMS review.

7.3. Management plans

Te Pokohiwi and the Boulder Bank Historic Reserves

The Department continued its work on developing a draft management plan for Te Pokohiwi and the Boulder Bank historic reserves. This plan will be jointly approved by the Conservation Board and Rangitāne. Updates on this process were provided to the Board at the April and May 2019 meetings. Board members were invited to a wānanga with Rangitāne in June so they could understand Rangitāne values and aspirations for this culturally significant place.

Molesworth Recreation Reserve

Anticipating the review of the Molesworth Management Plan, the Board established a committee to work with the Department. A joint workshop was held in April 2019 with the Molesworth Steering Committee to enable everyone to better understand the management planning process once the review proceeds. The Board and Molesworth Steering Committee were represented at a workshop held in May 2019 to understand the values, uses, opportunities and threats for Molesworth Recreation Reserve. Gina Solomon, Aneika Young, Murray Poulter and Katie McNabb represented the Board at this workshop.

The Board has been kept well informed about the work DOC is doing to review the future of Molesworth Station given the impending expiry of the farming lease in June 2020. The process to extend the lease by two years was discussed at the Board's May 2019 meeting. The Board has maintained a close connection with the Molesworth Steering Committee throughout this process.

Kahurangi National Park

The Board noted the Minister's announcement that the Kahurangi National Park Management Plan would be reviewed following the addition of land at Mokihinui to the National Park. The Board welcomed the addition of this large piece of land to the park and looks forward to reviewing the management plan.

Implementation monitoring

The Board considered implementation reports on the management plans for:

- Abel Tasman National Park Management Plan (December 2018)
- Kahurangi National Park Management Plan (February 2019).

The Board provided feedback on the reports to the Department. Members were impressed overall with the progress made and the range and amount of work completed.

7.4. Other Conservation Boards liaison

The West Coast Tai Poutini Conservation Board appointed a liaison person, Coraleen White, to work with the Board's Ōparara Basin working group. The area is on the West Coast and within Kahurangi National Park, which is part of our Board's jurisdiction. The Board will continue to closely monitor development proposals there for works that received Provincial Growth Funding. The Board wrote to Tourism West Coast and Tourism Resource Consultants. Both Boards are aware of the sensitivity of the karst landscape in the Ōparara Basin and its high biodiversity values. The working group identified several gaps in the Feasibility Study and Business Case.

All agendas and minutes were exchanged with the West Coast Tai Poutini, Canterbury Aoraki, and Southland Conservation Boards.

Liaison with	Member
West Coast Tai Poutini Conservation Board	Barbara Stuart
Canterbury Aoraki Conservation Board	Amelia Taylor

7.5. New Zealand Conservation Authority liaison

Robyn Jebson continued in her role as NZCA liaison person and attended the Board's December 2018 meeting in St Arnaud, Nelson Lakes National Park. Incoming NZCA Chair Edward Ellison expressed an interest in attending a Board meeting when this can be arranged.

Copies of all agendas and minutes are exchanged between the Board and NZCA.

8. Community advocacy and involvement

All Board members have responsibility for liaising with other groups when opportunities arise. Some members are specifically appointed to represent the Board on other groups or organisations (see section 5).

The Board considers that forming connections with conservation organisations and members of the public is very important. Meetings were held in different parts of the Nelson Marlborough region and opportunities for the public to attend Board meetings are advertised.

Members of the public attended the Public Forum at most of the year's meetings and a range of issues were raised. The Board appreciated their input and efforts made to attend the meetings and responded by letter with a response to questions asked or concerns raised.

Issues raised through the Public Forums included:

- The need to protect Stewardship Land from mining
- Concern at the impact of freedom campers on dotterels in Kaikōura
- Impact of the Kaikōura earthquake on the tītī/Hutton's shearwater
- Impact of wilding conifers in Marlborough
- Protection of the Nelson Mineral Belt
- Concern at impact and safety of users of Te Araroa Trail

- Use of deer repellent in aerial pest control operations in the Flora area of the Kahurangi National Park
- Protection of birds on the Motueka Sandspit
- History of the Marlborough Conservation Board (by two previous Chairs)
- Pest control and biodiversity values of the Molesworth.

8.1. Community awareness and visibility

The Board is interested in what is happening in conservation across the region and invites representatives from community organisations to present at each meeting. Speakers at Board meetings this year have represented:

- Kotahitanga mō te Taiao Alliance
- Nelson Regional Development Agency
- Ka huru manu & Tangata Ngāi Tahu on cultural mapping
- Marlborough Girls College Marine Team on legislative protection of the Marlborough Sounds
- Fish and Game Council
- Friends of Flora
- Forest and Bird
- NZ Deerstalkers Association

These included voluntary groups carrying out huge amounts of conservation work within the community. The Board recognises and appreciates volunteers and thanks them for the work done in this area.

Murray Poulter gave a presentation about the Board's work at a Conservation Week volunteers' celebration in September 2018. Andrea Goodman and Barbara Stuart also attended this event.

Murray Poulter and Andrea Goodman represented the Board on the regional assessment panel for applications to the DOC Community Fund. The Board received a report at its May 2019 meeting on how well the process had worked.

Bev Doole gave a presentation about the role of the Board at the inaugural meeting of the Marlborough Biodiversity Forum, June 2019, supported by Katie McNabb. There were 22 conservation groups present.

The Board maintains a presence on the Department's website. Members also attended conservation-related events, both those organised by the Department and the community.

The Board continued to look for ways to make its work more visible over the year.

8.2. Training for members

The Permissions Committee met in February 2019 to discuss the Department's permission processes and triggers for consultation with the Board.

A workshop on understanding the values and uses, opportunities and threats for Molesworth Recreation Reserve was held in Kaikōura in late May 2019. Gina Solomon,

Aneika Young, Murray Poulter and Katie McNabb attended this workshop. Technical experts presented on a range of topics: freshwater, biodiversity, landscape, Treaty of Waitangi, recreation, farming, animal and plant pests, historic heritage and permissions.

In addition to the regular updates on the Department's activities provided in the status report which is considered at each meeting, the Board received additional briefings and updates on a wide range of conservation-related work.

The Department provides an update on conservation activities within the local area at each meeting location.

Giving effect to Treaty principles

Harvey Ruru and Aneika Young attended Te Pukenga Atawhai in June 2019. The Board has agreed to strongly encourage all Board members to attend Te Pukenga Atawhai when the opportunity arises.

The Board continued its commitment to learn te reo and tikanga, practising waiata and karakia at each meeting. They have undertaken to learn the correct pronunciation of common te reo kupu (words) and place-names that might arise during each meeting.

The Board stayed overnight at Takahanga marae in Kaikōura in October 2018 and received a briefing on kawa for the powhiri and staying on a marae.

9. Strategic plan and report-back on actions

In February, the Board confirmed its guiding principles and action plan for 2018-19.

The Board refers to its Strategic Plan regularly in meetings to check on progress against agreed actions. It reviews and reports on actions six monthly. A report-back on the Board's actions is attached to this report.

The Board intends to develop a more comprehensive work programme for 2019 - 20 which will include milestones to report against.

Appendix One provides a report back on our actions to June 2019.



Tonga Island, Abel Tasman National Park
Photo: D Parr, DOC

Appendix One:

Nelson Marlborough Conservation Board Action Plan 2018 – report back to 30 June 2019

Action 1: Give effect to Treaty principles	Report on Actions
1.1 Contribute to hui with iwi (for example, on improving iwi consultation on permissions and CMS review)	Board members attended a wānanga with Rangitāne in June to understand Rangitāne values and aspirations for Te Pokohiwi and the Boulder Bank historic reserves. Bev Doole, Katie McNabb, Ian Alach and Aneika Young attended for the Board.
1.2 Strongly encourage Board members to attend DOC's Pukenga training	Two Board members attended Pukenga this year at Tuahiwi, near Christchurch: Harvey Ruru and Aneika Young.
1.3 Incorporate tikanga, karakia, waiata and Te Reo into Board meetings	<p>The Board includes tikanga in each meeting: a welcome karakia, karakia for kai and a closing karakia. We also practice our waiata.</p> <p>A refresher on pronouncing Te Reo words and Māori place-names that arise during each meeting is carried out at the start of each meeting.</p> <p>A Te Reo folder has been put together for each Board member and this is updated for each meeting with local Māori place-names and other kupu (words).</p> <p>Board members stayed overnight at Takahanga marae in October 2018 and were welcomed onto the marae with a Powhiri.</p>
1.4 Receive an annual presentation from DOC staff on Treaty Settlement obligations	Not delivered this year. The Board has requested an update on its s4 obligations and the implications of the Ngāi Tai ki Tāmaki decision for the Department.
Action 2: Increase visibility and profile of Board and members	Report on Actions
2.1 Members visibly represent the Board within their communities and at events	<p>Two Board members attended the Cawthron Marlborough Environment Awards: Bev Doole and Katie McNabb.</p> <p>Murray Poulter gave a presentation about the Board's work at a Conservation Week volunteers' celebration in September. Andrea Goodman and Barbara Stuart also attended this event.</p> <p>The Board featured in the April issue of the Department's volunteer newsletter to profile the Board and its work.</p> <p>Andrea Goodman attended the celebration marking at partnership between DOC, Nelmac and the Kea Conservation Trust in May 2019.</p>

	<p>Murray Poulter represented the Board at the launch of Kotahitanga mō te Taiao Alliance in June 2019.</p> <p>Bev Doole and Katie McNabb attended the inaugural Marlborough Biodiversity Forum in June 2019.</p>
<p>2.2 Attend local DOC-led events and maintain regular contact with local DOC Operations Manager</p>	<p>Bev Doole (Renwick) and Katie McNabb (Picton) attended DOC Health and Safety Roadshows on 1080 in November 2018.</p> <p>Rima Piggott, Aneika Young and Andrea Goodman represented the Board at a dawn ceremony to open the new entrance to Abel Tasman National Park, at Marahau in late 2018.</p> <p>Board members have made efforts to maintain regular contact with their local Operations Managers through meetings or phone contact. Members have found it useful to be updated on the Department’s work in their local areas outside of the formal Board meetings.</p> <p>Murray Poulter attended the start of a 1080 pre-feed operation in Golden Bay and was impressed with the level of organisation carried out for this.</p>
<p>2.3 Continue to invite community conservation and recreation groups to present to Board meetings</p>	<p>We invited conservation and recreation groups to most of our meetings over the year to keep informed about and connected with the important work of these groups. Presentations were received from:</p> <ul style="list-style-type: none"> • Kotahitanga mō te Taiao Alliance • Nelson Regional Development Agency • Ka huru manu & Tangata Ngāi Tahu on cultural mapping • Fish and Game Council • Friends of Flora • Forest and Bird • NZ Deerstalkers Association.
<p>2.4 Meet regularly with local conservation groups and find opportunities to connect with other organisations</p>	<p>Members report at each meeting when they have met with local conservation groups. Murray Poulter represents the Board on the Tasman Environmental Trust.</p> <p>Murray Poulter and Andrea Goodman represented the Board on the regional panel for assessing applications to the DOC Community Fund in May 2019.</p> <p>Our Whale Watch field trip in Kaikōura in May was a great opportunity to network with other organisations and people involved in marine conservation in Kaikōura. Representatives from a wide range of groups joined us on the boat – including: Kaikōura Marine Guardians, Te Korowai, Kaikōura District Council, ECAN, NCTIR.</p>

We looked at a freedom camping site in Kaikōura with staff from Kaikōura District Council and discussed the wider issue of responsible camping.

We are planning and looking forward to participating in a Conservation Week event during our meeting in Golden Bay in September 2019.

Murray Poulter and Andrea Goodman regularly attend Tasman Biodiversity Forums.

Bev Doole and Katie McNabb represented the Board at the inaugural meeting of the Marlborough Biodiversity Forum in June 2019.



Board members L-R Aneika Young, Rima Piggott and Andrea Goodman and Manawhenua ki Mohua representative Mairangi Reiher at the dawn ceremony for the waharoa at Marahau, Abel Tasman National Park in late 2018. Back L-R: Barney Thomas, Pou Tairangahau and Roy Grose, Director Operations. Photo: M Townsend, DOC

2.5 Maintain strong links with adjacent Conservation Boards, the Fish and Game Council and Molesworth Steering Committee

The Board maintained its watching brief on Provincial Growth Funding proposals to develop the Ōparara Basin area and increase tourism there. We extended our working group to involve a liaison person from the West Coast Tai Poutini Conservation Board (Coraleen White).

The Board liaised with the Canterbury Aoraki Conservation Board to confirm arrangements for the Molesworth management plan review and intends to hold a joint meeting of the relevant Board committees in early 2020.

	<p>The Board held a workshop with the Molesworth Steering Committee in April 2019. This followed an overnight trip to Molesworth Station with some Steering Committee members.</p> <p>Fish and Game Council representatives attended our February meeting. We appreciate the input and advice they provide, and they have an open invitation to attend future meetings.</p>
Action 3: Provide quality advice to DOC and NZCA across the range of Board functions	Report on Actions
3.1 CMS review	<p>The Board continues to be disappointed and frustrated about the delay to reviewing the Nelson Marlborough CMS. While the Board understands the Department's intent to apply the outcomes and learning from the iwi engagement system, we feel the CMS review can no longer be delayed. We are mindful that other management planning priorities in the region and elsewhere in the country is impacting on the Department's capacity to progress our CMS review. The delay is no longer acceptable, and the Board wants to see the CMS review proceed.</p>
3.2 Future management of Molesworth Recreation Reserve	<p>The Board has been kept well informed throughout the year about the proposed process to determine the future management of Molesworth Recreation Reserve, which has enabled us to provide informed advice to the Department.</p> <p>We feel we are getting a good understanding of the issues that will need to be considered in the proposed management plan review. Our visit to Molesworth Station helped in that regard, as did Board member attendance at a workshop in Kaikōura. The workshop focused on understanding the uses and values, and opportunities and threats for the Reserve. Gina Solomon, Katie McNabb, Murray Poulter and Aneika Young attended for the Board.</p>
3.3 Kahurangi National Park – monitoring of extended mountain bike season on the Heaphy track	<p>We received a monitoring report from the Department in April 2019 on the 2018 mountain biking season and provided feedback to the Department at our May 2019 meeting. We considered it was a good report and agreed with the proposed improvements to monitoring.</p>
3.4 Land status re-classifications / additions to national parks	<p>The Board has provided further advice to the Department on stewardship land re-classification priorities for the Northern South Island region, establishing a working group in May 2019 to work on the process.</p>

3.5 Other advice

We advised the department on a range of other issues, including:

- Predator Free 2050
- Draft Heritage and Visitor Strategy
- Nelson mineral belt protection
- Wilding pines
- Ōparara Basin development
- Deer repellent use
- Hectors and Maui Dolphin Threat Management Plan: Katie McNabb attended the South Island stakeholder forum and reported to the Board in December 2018.



Board members outside the February 2019 meeting: L-R Rima Piggott, Murray Poulter, Katie McNabb, Gina Solomon, Andrea Goodman, Ian Alach, Bev Doole, Amelia Taylor, Harvey Ruru, Aneika Young. Absent: Barbara Stuart.

Photo: Jacqui Irwin DOC