

*Te Rūnanga Whakauka o Kahurangi  
ki Kaikōura  
Nelson Marlborough Conservation Board.  
Annual Report 2017/2018*



# **Te Rūnanga Whakauka o Kahurangi ki Kaikōura, Nelson Marlborough Conservation Board Annual Report 2017-2018**

**Presented to the New Zealand Conservation Authority  
pursuant to Section 6 (O) of the Conservation Act 1987**

This report is presented to the New Zealand Conservation Authority as required by the Conservation Act and distributed to interested parties. Members of the public are welcome to attend Conservation Board meetings. If you would like more information on the Nelson Marlborough Conservation Board please see the website [www.conservationboards.org.nz](http://www.conservationboards.org.nz) or contact the Board Support Officer, at the Department of Conservation in Nelson phone (03) 546 9335 or e-mail [nelsonmarlboroughboard@doc.govt.nz](mailto:nelsonmarlboroughboard@doc.govt.nz).

Published by  
Nelson Marlborough Conservation Board  
c/- Department of Conservation  
Private Bag 5  
Nelson 7041

ISSN 1176-7065 (print)  
ISSN 1178-4113 (online)

## Photographs

Front Cover: Board members Moria Gate Mirror Tarn Loop Oparara Kahurangi National Park. April 2018

Photo credit: Kath Inwood

Back cover: Board members with staff on the look-out at Denniston Coalmining Historic Area, April 2018.

Photo credit: Kath Inwood

## CONTENTS

1.	Chairperson’s report .....	4
2.	Conservation Board functions and powers.....	8
2.1.	Board functions under the Conservation Act 1987 .....	8
2.2.	Board powers under the Conservation Act 1987.....	8
2.3.	Responsibilities under other Sections of the Conservation Act 1987.....	9
2.4.	Board Functions under the National Parks Act 1980 .....	9
3.	Nelson Marlborough Conservation Board Region.....	9
4.	Board Membership .....	13
4.1.	Members’ profiles .....	13
4.2.	Board Committees and Representation.....	15
	Concessions Committee .....	15
	Iwi Committee .....	15
	Working Groups.....	15
	Representation.....	16
	Liaison Roles.....	16
5.	Board Meetings.....	17
5.1.	Attendance.....	17
5.2.	Special Events.....	18
6.	Statutory activity.....	19
6.1.	Conservation Management Strategy (CMS).....	20
6.2.	Management plans .....	20
	Implementation monitoring .....	20
6.3.	Other Conservation Boards liaison .....	20
6.4.	New Zealand Conservation Authority liaison .....	21
7.	Community advocacy and involvement .....	21
7.1.	Community awareness and visibility.....	21
7.2.	Training for members .....	22
8.	Strategic plan and report-back on actions.....	23

## 1. Chairperson's report

### KORERO FROM THE CHAIR, GINA SOLOMON

E nga mana, e nga reo, e nga maunga, e nga awa  
Nga waka ki tenei rohe Kurahaupo, Tokomaru, Tainui, Takitimu tena koutou  
Nga whanau, hapu, iwi, mo nga kaitiaki, Tena tatou katoa

*All authorities, all voices, all mountains, all the rivers  
To the many waka within the region, Kurahaupo, Tokomaru, Tainui, Takitimu, greetings to  
your waka  
To the kaitiaki, greetings to you all*

I am honoured to provide you with my first report as Chair of Te Rūnanga Whakauka o Kahurangi ki Kaikōura, the Nelson/Marlborough Conservation Board.

#### **BOARD STRATEGIC PLAN 2018**

Last year the Board undertook an exercise to develop a Board Strategic Plan. A great workshop was run with Conservation Department staff member Nic John facilitating a really lively, interactive and fun session. The board was keen to develop its own guiding principles/values which would lead us to cultivate an effective action plan that creates and gives value to our work and our responsibilities. We have come up with a great and real Board Strategic Plan which we include in this Annual Report. The Board is really focussed on our Strategic Plan and determined that this be a living functioning plan which is regularly visited, and we check off that we are accomplishing the things we have set out to achieve – it's a great working plan. We thank Nic for his great expertise and guidance.

#### **TE REO / TĪKANGA MAORI**

Our Board has joined in with a flood of New Zealanders who have embraced Te Reo Maori and are actively upskilling and increasing our learning in this area. Every meeting the Board is provided with local Maori names from within the area we are meeting to learn how to pronounce these beautiful words correctly and gather an understanding of their meaning. This work is developing into a beautiful Te Reo booklet for members. Karakia and Waiata are also included on our agenda and enjoyed by all.

Board members have also attended Te Pukenga Atawhai Programme, the department's cultural training which also helps recognise ongoing Treaty partnership obligations and helps grow knowledge and capability in this area.

The Board also receives an annual presentation from the department on Treaty Settlement obligations.

I am in awe and commend my Board members for their active support and enthusiasm - Tu Meke! (Too Much!)

*Kia Kaha te Reo Māori  
Let's make the Māori language strong*

## **BOARD CELEBRATIONS/CONGRATULATIONS**

We have included Celebrations/Congratulations to our Board agenda. This is our opportunity to proactively acknowledge fantastic work that is happening in conservation in our region, both within the Department and by others.

A highlight was the Board's successful nomination of the Department of Conservation's work to eradicate the Great White Butterfly for an NZ Biosecurity Award. I was proud to represent the Board at the awards ceremony in Wellington – the project won both Government and Supreme Awards and this acknowledgement is a tribute to the skills, innovation and determination of the staff and others involved.

## **COMMUNITY PRESENTATIONS**

Our Board is very active in staying in touch with what is happening on the ground out there in our communities. We regularly have presentations in our Public Session and we also invite community groups to come and speak to the Board to give us an update on what their group is doing, hear about any issues and to give the Board advice. The Board is extremely grateful to all those who take the time to come and talk to us. We are impressed with the fantastic work happening out there and the effort they put into looking after our places, growing conservation and providing for a better environment for all. We applaud and thank these community heroes for their wonderful efforts and hard work:

## **HEALTH AND SAFETY**

We are serious about meeting our health and safety obligations. We have developed and adopted a very robust Health and Safety Policy. We work through vigorous processes/checklists before, during and after each board meeting/outings which also includes the ability to update the policy and processes when needed.

## **RELATIONSHIPS WITH OTHER STATUTORY BODIES**

In April this year we had a 2-day joint meeting in Karamea with the West Coast Conservation Board. This was a great opportunity to connect with an adjacent Conservation Board and our relationship with the West Coast Board members is particularly important, given our oversight of Kahurangi National Park. We thank the West Coast Conservation Board for sharing their beautiful place with us and their wonderful hospitality.

We have reflected on the importance of maintaining connections with other statutory conservation bodies in our region, particularly Fish and Game Council and the Molesworth Steering Committee and wish to put more focus on this next year.

## **BOARD LEADERSHIP**

This year I instigated a Leadership Team approach to the Board, through elevating the Deputy Chair role. In the past the Deputy Chair position has largely been to fill the Chair's role when the Chair is not available. I believe it is important for the Board to have strong united leadership and am committed to working closely with our Deputy Chair to achieve this. We are still developing how our leadership team approach will work. Benefits so far include working with the department on setting the meeting agenda and providing advice in between meetings. The other benefit has been for the Chair and Deputy to bounce around some of the trickier issues when needed in between meetings. Board members also play an important leadership role when called upon to represent our Conservation Board at particular community events within their own areas.

## **CONSERVATION BOARD CHAIR'S CONFERENCE**

The Conservation Authority provides the opportunity to bring together all Conservation Board Chairs yearly to talk about how things are going in their regions and discuss any conservation issues that may be on the horizon. As I was unable to attend this year, Board member Bev Doole offered to attend on my behalf.

These conferences are a wonderful opportunity to meet other chairs, share ideas and look for solutions and improvements to issues. They are a great upskilling and learning environment. Including Deputy Chairs in this hui in the future would be a huge benefit to conservation boards.

## **CHALLENGES AND ISSUES GOING FORWARD**

We look forward to re-initiating our CMS Review next year. The workshop in October was a helpful starting point and as a Board we look forward to helping steer this important piece of work.

A key challenge for our region is improving relationships with iwi and engaging with whanau, hapu and iwi on conservation matters. As a Board we are well placed to support this, given our level of Maori representation on the Board, our commitment and the work we regularly do to improve our knowledge of Tikanga Maori.

Tourism and its impact on the environment and conservation values will pose challenges. We are excited by the potential to link visitor experiences with restoring our native habitats and by the potential of landscape scale restoration initiatives in our region, such as Kotahitanga mo te Taiao, a landscape scale restorative initiative.

## **THANK YOU**

I want to thank Roy Grose, Operations Director who leads the regional operations team. Roy and his fantastic team do a fabulous job. Their hard work and dedication to their roles is highly commendable. The advice and specialist knowledge provided by staff at our Board

meetings is very much appreciated. We often have robust conversations that are always respectful. The Board's role is to question the department when needed and to provide the department with advice. We are not there just to tick a box. We need to continue to ask questions and reflect our communities' views and we are very grateful we are able to do this with the department in a courteous, respectful and safe way.

I want to thank Barney Thomas, Pou Tairangahou. Barney provides our Board and the Department with superb cultural advice/training and tīkanga, values. His expertise in this area is superior but always humble and kind. Barney is incredibly busy and has a very large area to cover. We are extremely grateful for his wonderful input and that he is able to attend our meetings as much as he does.

I want to thank my Conservation Board members. They come to meetings well prepared, well read and they bring their "top game" to the table. They provide thoughtful questions and challenge the thinking around the table, always in a respectful way. Their hard work, efforts and dedication to the role is very much appreciated.

My sincere thanks and gratitude as Chair. I leave you with one of my favourite Conservation Department Whakatauki:

**Taiao Hauora, Tangata Hauora  
Healthy Nature, Healthy People**

Ka kite ano



Gina Solomon  
Chair  
August 2018

## 2. Conservation Board functions and powers

The Nelson Marlborough Conservation Board is appointed by the Minister of Conservation under section 6(P) of the Conservation Act 1987. Board functions and powers, which enable the Board to carry out those functions, are specified in the Act.

### 2.1. Board functions under the Conservation Act 1987

The Conservation Act, section 6(M), specifies that the Board's functions are to:

- recommend the approval of conservation management strategies, and the review and amendment of such strategies;
- approve conservation management plans, and the review and amendment of such plans;
- advise the Conservation Authority and the Director-General on how conservation management strategies and plans will be put into practice;
- advise the Conservation Authority and the Director-General on any proposed changes to the status or classification of any area of national or international significance;
- advise the Conservation Authority and the Director-General on any other conservation matter relating to any area with the jurisdiction of the Board;
- liaise with Fish and Game Councils on conservation matters; and
- carry out other powers delegated to it by the Conservation Minister, under the Conservation Act or any other Act.

The Board has a number of functions under section 30 of the National Parks Act 1980. These functions include recommending the review or amendment of national park management plans and recommending approval of these plans by the New Zealand Conservation Authority (NZCA).

### 2.2. Board powers under the Conservation Act 1987

Section 6(N) subsection (1) of the Conservation Act specifies that "Every Board shall have all such powers as are reasonably necessary or expedient to enable it to carry out its functions".

Without limiting the generality of subsection (1), each Board may –

- a) Advocate its interests at any public forum or in any statutory planning process; and
- b) Appoint committees of members and other suitable persons, and delegate to them functions and powers.

The power conferred by subsection (a) above shall include the right to appear before courts and tribunals in New Zealand and be heard on matters affecting or relating to the Board's functions.



Section 6(O) of the Conservation Act 1987 requires conservation boards to provide the NZCA with an annual report as soon as practicable after the 30th June each year. In recognition of this requirement the Nelson Marlborough Conservation Board submits this annual report.

### **2.3. Responsibilities under other Sections of the Conservation Act 1987**

Under Section 6P of the Conservation Act, A Board whose area of jurisdiction is partly within the Ngāi Tahu claim area must consist of no more than 12 persons, with at least 1 person appointed on the nomination of Te Rūnanga o Ngāi Tahu. The Nelson Marlborough Conservation Board currently has two members who were appointed on the nomination of Te Rūnanga o Ngāi Tahu.

### **2.4. Board Functions under the National Parks Act 1980**

There are 3 national parks within the Board's region: Kahurangi National Park, Nelson Lakes National Park and Abel Tasman National Park. The Board sets up subcommittees when the management plans for these are being reviewed. The Board liaises with the West Coast *Tai Poutini* Conservation Board around cross-boundary issues relating to Kahurangi National Park.

## **3. Nelson Marlborough Conservation Board Region**

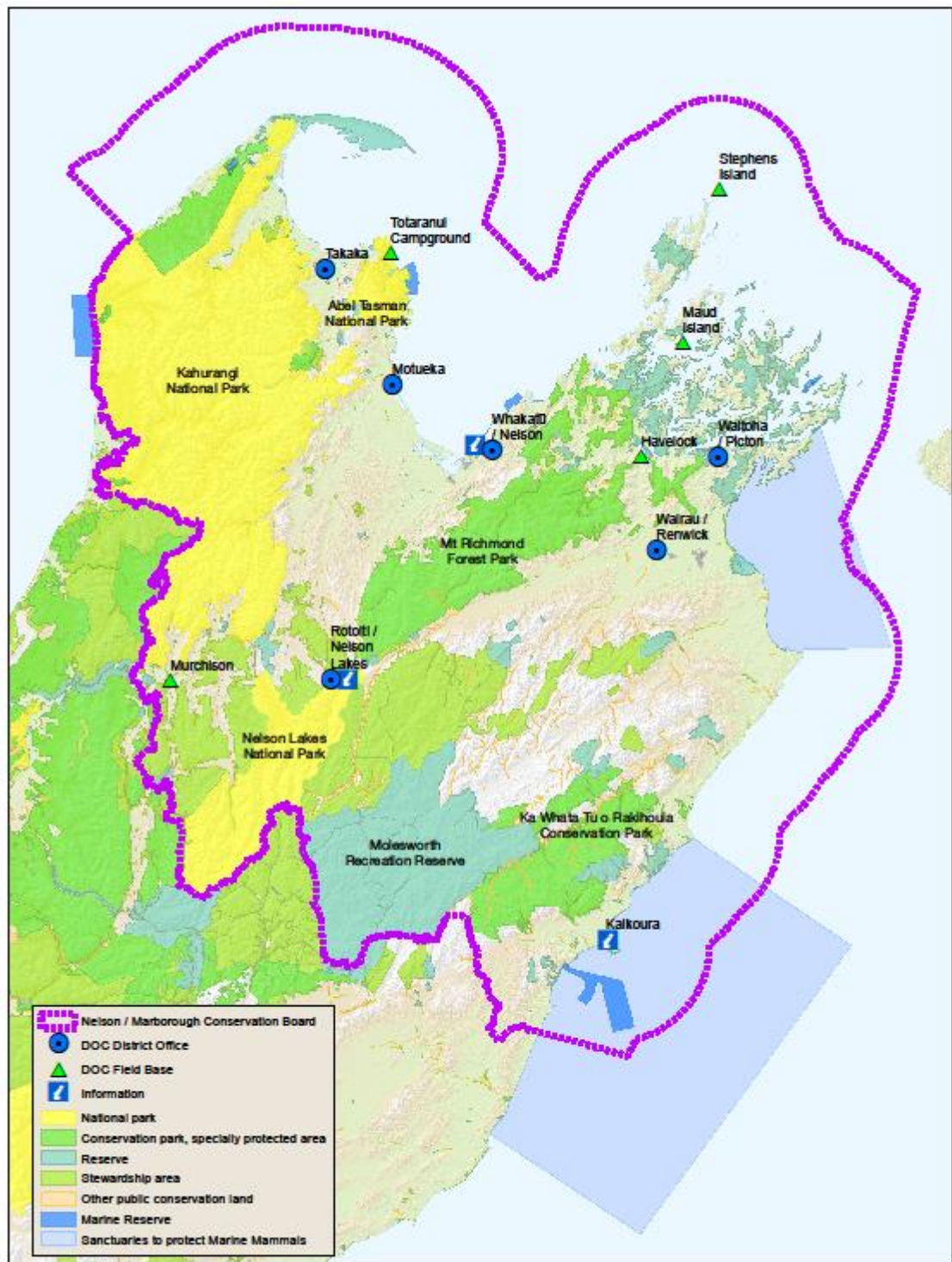
The Nelson Marlborough Conservation Board's area of jurisdiction covers all of Nelson and Marlborough, with oversight of the whole of Kahurangi National Park. This also includes Abel Tasman and Nelson Lakes National Parks, Mt Richmond Forest Park, Molesworth Station and important nature reserves such as Takapourewa (Stephens Island) and Farewell Spit. The area also extends out to the 12-nautical mile limit with respect to coastal and marine issues, and out to the 200-nautical mile limit with respect to protected species.

The area caters for a wide range of recreational activities in the Marlborough Sounds and Ka Whata Tu o Rākohouia, the Conservation Park in the Kaikoura Ranges. There are also five Marine Reserves in Nelson Marlborough - Long Island/Kokomohua, Westhaven/Te Tai Tapu, Tonga Island, Horoirangi and Hikurangi.

There are about 750 historic places, both Maori and European, including archaeological sites, historic backcountry huts, a whaling station and cob cottages in South Marlborough.

Species protection programmes in the area cover Hector's Dolphin, tuatara, endemic frogs, Powelliphanta snails, great spotted kiwi, Takahe, Hutton's shearwater, weka, kākā, black fronted tern and whio (blue duck) and include a "mainland island" at Nelson Lakes (the Rotoiti Nature Reserve Programme).

The Board's area of jurisdiction also covers some of New Zealand's best-known visitor sites, including the Abel Tasman Coast Track, the Heaphy Track and the Queen Charlotte Track. There are over 300 other walks and tracks totalling more than 1950 kilometres.



Nelson Marlborough Conservation Board  
Area of Jurisdiction

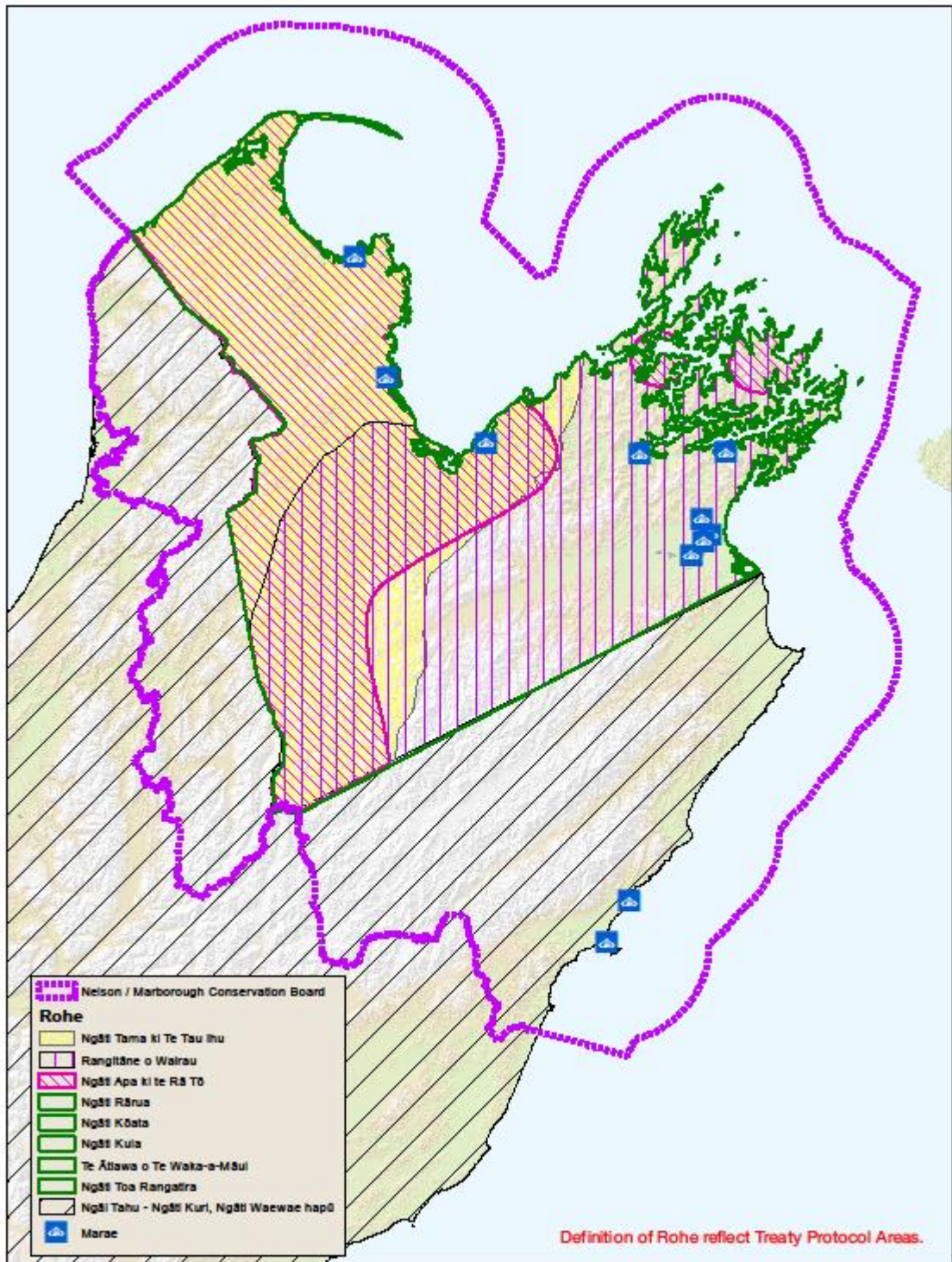


Figure 1: Nelson Marlborough Conservation Board area of jurisdiction

The Board area includes the rohe of the eight iwi of Te Tau Ihu (Te Ātiawa, Ngāti Rārua, Ngāti Koata, Ngāti Kuia, Rangitāne, Ngāti Toa Rangitira, Ngāti Apa ki te Rā Tō, and Ngāti Tama), and the Ngāti Kuri and Ngāti Waewae hapu of Ngāi Tahu. There are 11 Marae within the Board area.

The large number of issues which are of interest to the Board include:

- Ecosystem management and management of plant and animal species
- Management of recreational facilities
- Management of historic sites
- Concession activities, including those relating to recreation and tourism activities, grazing, industrial use, baches, filming, gravel extraction
- Marine protection



**Nelson Marlborough Conservation Board**  
**Rohe boundaries**



Figure 2: Nelson Marlborough Conservation Board rohe boundaries (based on Treaty Protocol Areas)

## 4. Board Membership

There were 10 Board members for the reporting year.

The terms of office expired on 30 June 2017 for Bob Dickinson and Mairangi Reiher. Sue Brown also resigned as of that date.

There were four new appointments. One appointee did not take up the role, so the Board carried a vacancy throughout the year. New appointees were Andrea Goodman, Barbara Stuart and Rima Piggott.

Gina Solomon was elected Chairperson and Bev Doole was elected Deputy Chairperson.

The following table lists the membership of Nelson Marlborough Conservation Board between 1 July 2017 and 30 June 2018 and their terms of office.

Board member	Area	Term start	Term end	Term served
Gina Solomon (Chair) (Ngāi Tahu appointee)	Kaikoura	16/10/2006	30/06/2018	12 yrs
Bev Doole (Deputy)	Blenheim	01/07/2014	30/06/2020	4 yrs
Andrea Goodman	Motueka	01/07/2017	30/06/2020	1 yr
Steve Knight	Blenheim	01/05/2014	30/06/2018	4 yrs
Katie McNabb	Picton	01/07/2014	30/06/2020	4 yrs
Rima Piggott	Motueka	1/07/2017	30/06/2020	1 yr
Murray Poulter	Motueka	01/07/2016	01/07/2019	2 yrs
Joy Shorrock	Motueka	01/01/2011	30/06/2018	7 yrs
Barbara Stuart	Nelson	01/07/2017	30/06/2020	1 yr
Amelia Taylor (Ngāi Tahu appointee)	Kaikoura	01/11/2013	30/06/2019	5 yrs

### 4.1. Members' profiles



**Gina Solomon (Chairperson)** of Kaikoura was appointed in 2006 on the recommendation of Te Rūnanga o Ngāi Tahu. Her whakapapa connects her to Ngāi Tahu, Kurahaupō, Ngāti Koata, Te Ātiawa and Ngāti Toa. She is an active member of Te Rūnanga o Kaikoura and for the last 25 years has held various positions within the organisation. She advocates for and promotes iwi and conservation values. Gina is Administrator/Secretary and a member of Te Korowai o Te Tai o Marokura (Kaikoura Coastal Marine Guardians) and is a Kaikoura Marine Guardians. She is also a Director on the Queen Elizabeth II National Trust, a member of the Nature Heritage Fund, and is on the Forestry Ministerial Advisory Group and Deputy Chair of the Kaikoura Zone Committee under the Canterbury Water Management Strategy. She is an RMA Commissioner and is passionate about advocating for conservation, the environment and outcomes for the good of the community.



**Bev Doole (Deputy Chair)** of Rarangi near Blenheim, was appointed to the Board in July 2014. Bev is a freelance writer and editor. She has experience in writing resource management plans and policy documents. She is highly knowledgeable about conservation issues in the region. Her outdoor recreation interests are walking, kayaking and gardening.



**Joy Shorrock** of Motueka was appointed to the Board in December 2010. She is a traditional Maori weaver and a teacher of this art form. Joy is an active member of Te Awhina Marae and is on the marae board. She is also a member of the Kaiteriteri Recreation Reserve Board. Her iwi affiliations are Te Ātiawa, Ngāti Rārua, Ngāti Tama, Ngāti Kuia and Ngāti Koata ki te Tau Ihu. She lives in Motueka.



**Amelia Taylor** of Kaikoura is a nominee of Te Runanga o Ngai Tahu. She is Kaikoura Project Coordinator for Red Cross NZ and Director/Owner of Noa Naturals Kaikoura. Amelia is a Justice of the Peace. She has previously been a whale watch sea crew guide and worked in the hospitality industry. She is involved in many local environmental groups with interests in beach and stream protection, species recovery and caring for birds. She is currently studying the use of New Zealand plants in medicine. She is affiliated to Ngāi Tahu, Ngāti Kuia, Ngāti Koata, Te Ātiawa, and Ngāti Toa.



**Steve Knight** of Blenheim works in IT for FarmIQ, selling and developing farm management software. He has an interest in the viticulture sector in Marlborough and represents NMCB on the Molesworth Steering Committee. He has extensive experience in sales, portfolio management and strategic planning. When time permits enjoys getting back to basics hunting and tramping throughout the South Island



**Katie McNabb** of Picton was appointed to the Board in July 2014. Katie is a boating education tutor and member of the Coastguard Boating Education Services Board. She has experience in board membership, policy and planning. She was involved in the restoration of Perano whaling station. Her outdoor recreation interests are sailing, skiing, biking and river boating.



**Murray Poulter** of Tasman, near Motueka, was appointed to the Board in July 2016. Murray has extensive experience in scientific research and management, and most recently was the Chief Scientist Atmosphere, Climate and Hazards for NIWA. He enjoys walking, hiking, cycling, canoeing and fishing. He is the Board representative on the Tasman Environmental Trust and is part owner of a QEII covenanted section of bush.



**Andrea Goodman** of Ngatimoti, near Motueka, was appointed to the Board in July 2017. Andrea works in community engagement and human-wildlife conflict for the Kea Conservation Trust. She has a strong scientific approach with a BSc in Zoology, MSc in Ecology and Post-Graduate Diploma in Wildlife Management. Her interests include tramping, walking, gardening and Enviroschools.



**Rima Piggott** of Motueka was appointed to the Board in July 2017. Rima is a home health support worker and has a certificate in Horticultural Management. Rima has broad community involvement and is a Trustee for Te Rununga o Ngāti Rārua and a member of the Manawhenua ki Mohua Trust. She enjoys tramping, fishing, hunting, diving, gardening and gathering kai moana. Rima is affiliated to Ngāti Rārua, Te Ātiawa, Ngāti Toa Rangitira, Ngāti Ranginui, Ngāiterangi and Ngāti Tūwharetoa.



**Barbara Stuart** of Cable Bay, near Nelson, was appointed to the Board in July 2017. Barbara brings a strong connection to farming and engagement with rural communities. She has a professional background in facilitating and fostering sustainable land management and conservation outcomes on private land. She has also played a key role in promoting walking access across the region and is owner operator of a family farm and holiday park. Barbara enjoys walking, history, native plants and writing.

## 4.2. Board Committees and Representation

Membership of Board committees was reviewed in July, at the beginning of the Board year.

The Kahurangi National Park Management Plan Amendment Committee was dissolved. Its purpose, to recommend to the Authority an amendment to the Kahurangi National Park Management Plan to extend the season for mountain bike use, was complete.

### Concessions Committee

The purpose of this subcommittee is to advise the Department on policy matters associated with concessions. Members were Amelia Taylor, Murray Poulter, Gina Solomon, Katie McNabb and Bev Doole.

The committee is only formally involved in the concessions process when one of the agreed trigger points is activated, most often being a new type of activity.

### Iwi Committee

The purpose of this subcommittee is to provide advice to the Board on working with iwi. Members this year were Joy Shorrocks, Bev Doole, Amelia Taylor, Gina Solomon, Rima Piggott and Andrea Goodman.

### Health and Safety Committee

The Board established a Health and Safety Committee to review its health and safety policy and hazard management plan. Members were: Amelia Taylor, Katie McNabb, Gina Solomon and Murray Poulter. The Board adopted the revised health and safety policy in October.

### Working Groups

A small working group was set up to progress a suggestion to write an article for Nelson Marlborough Farming magazine, consisting of Barbara Stuart, Katie McNabb and Bev Doole.

<b>Committee</b>	<b>Members</b>
Concessions Committee	Amelia Taylor Murray Poulter Gina Solomon Katie McNabb Bev Doole
Iwi Committee	Joy Shorrock Bev Doole Amelia Taylor Gina Solomon Rima Piggott Andrea Goodman
Health and Safety Committee	Amelia Taylor Katie McNabb Gina Solomon Murray Poulter

## Representation

The listed members represented the Board on the following organisations:

<b>Representation</b>	<b>Member</b>
Molesworth Steering Committee	Steve Knight
Tasman Environmental Trust	Murray Poulter
Abel Tasman Foreshore Advisory Forum	Joy Shorrock
Long Island Kokomohua Marine Reserve Committee	Katie McNabb
Horoirangi Marine Reserve Committee	Joy Shorrock
DOC Community Fund assessment panel 2017	Murray Poulter

Board representatives reported on the activities of the respective organisations at Board meetings.

Although Steve Knight is retiring from the Conservation Board as of 30 June 2018, he was appointed by the Minister onto the Molesworth Steering Committee until 30 June 2020. The Board confirmed Steve's representation on behalf of the Board on the Molesworth Steering Committee.

The Marine Reserve Committees did not meet during the 2017-18 year.

## Liaison Roles

<b>Liaison with</b>	<b>Member</b>
West Coast Tai Poutini Conservation Board	Barbara Stuart
Canterbury Aoraki Conservation Board	Amelia Taylor, Steve Knight



## 5. Board Meetings

The Nelson Marlborough Conservation Board held 6 meetings during the reporting period. Board meetings are held across the district to enable members of the public to attend meetings and access the Board.

Board meeting dates and location:

<b>Board meeting date</b>	<b>Meeting location and venue</b>
10 August 2017	Port Marlborough Boardroom, Picton
19 October 2017	Recreation Park Centre, Takaka
14 December 2017	Renwick Fire Station, Blenheim
1 March 2018	Fairfield House, Nelson
19 April 2018	The Last Resort, Karamea
14 June 2018	Picton Fire Station, Picton

### 5.1. Attendance

The table below summarises the number of Board meetings attended by members out of the total number of meetings held during the year.

Members attended other meetings and events in their role as Board members, including subcommittee meetings and representative roles.

<b>Board Member</b>	<b>Board meetings</b>
Gina Solomon (Chair)	5/6
Bev Doole (Deputy)	6/6
Andrea Goodman	6/6
Steve Knight	5/6
Katie McNabb	6/6
Rima Piggott	6/6
Murray Poulter	6/6
Joy Shorrocks	5/6
Barbara Stuart	5/6
Amelia Taylor	3/6

The after effects of the Kaikoura earthquake affected the ability of Gina Solomon and Amelia Taylor to attend some meetings due to road closures.

### Field Trips and site inspections

- In October 2017 the Board had a field trip to Wainui Falls in Abel Tasman National Park. A short walk through lush native bush leads to the cascading Wainui Falls, the largest and most accessible falls in Golden Bay/Mohua. It is one of the Department's best short walks. The recently repaired walk way reopened following a severe weather event. The Board were able to witness first-hand the storm damage and ensuing repair work undertaken by local DOC staff.



*Board Members with Aroha Gilling, Treaty Settlements Ranger, at Wainui Falls*

- In April 2018, at the joint meeting with the West Coast Tai Poutini Conservation Board, Board members visited the Oparara Arches in Karamea. Robyn Jebson from the New Zealand Conservation Authority was also on the field trip. The site visit enabled Board members to experience the Oparara area (which is in Kahurangi National Park) and understand the work of the Oparara Valley Project Trust.

## 5.2. Special Events

**MPI Biodiversity Awards** – Gina Solomon attended on behalf of the Conservation Board. The Conservation Board nominated the Department for the Great White Butterfly eradication. The nomination won both the Government Award and the Supreme Award.

**Board Chairs hui** – Deputy Chair Bev Doole attended the Board Chair’s hui in Wellington in August 2017 and reported back to the August 2017 Board meeting.

**Translocations** – Board members attended translocations of Takahe to Gouland Downs, Kahurangi National Park and Pateke to Hadfield’s Clearing, Abel Tasman National Park

**Predator Free 2050** – Board members Murray Poulter, Katie McNabb and Andrea Goodman attended the Minister of Conservation’s launch of the joint Nelson Marlborough Institute of Technology (NMIT) and DOC Predator Free Training Programme – an online toolkit for ‘Introduction to Trapping Methods’.



*Board Members and other attendees at NMIT with Minister of Conservation at launch of Predator Free Training Programme*

## 6. Statutory activity

The Board receives a planning report from the Department at each meeting which summarises statutory work underway in the region, under the Resource Management Act and management planning under the National Parks Act and Reserves Act.

The Board receives implementation monitoring reports on all management plans and the Conservation Management Strategy throughout the year.

The Board did not undertake any formal advocacy under the Resource Management Act this year. However, it maintained a keen interest in the submission and hearing process on the Marlborough Environment Plan and the proposal to relocate and expand salmon farming in the Marlborough Sounds. Board members attended hearings of submissions on the Marlborough Environment Plan.

Bev Doole and Katie McNabb attend Marlborough Marine Futures workshops for collaborative stakeholder management and protection of the Marlborough Sounds.

The Board wrote to the Minister of Conservation about the salmon relocation proposal in the Marlborough Sounds, expressing concern that about the lack of DOC visibility and advocacy during the whole-of-government process led by MPI. The Board received an update from DOC on the process in March 2018.

## 6.1. Conservation Management Strategy (CMS)

The Board considered the implementation report on the CMS in August 2017.

In October 2017 the Board held a workshop on the CMS review process and agreed that the first step in the CMS review process should be iwi engagement. The Board emphasised the importance of getting this right.

The Department subsequently advised the Board in March 2018 that it was carrying out strategic work to improve iwi engagement nationally which is being piloted in the Northern South Island region, and that iwi engagement on the CMS Review would not be initiated until this work was completed.

Whilst this delay on the CMS Review is frustrating, the Board acknowledges the importance of engaging with iwi well.

## 6.2. Management plans

There have been no management plan reviews this year. The Department is developing a draft management plan for Wairau / Te Pokohiwi Boulder Bank Historic Reserve jointly with Rangitane. This is still in the early stages of development.

### Implementation monitoring

The Board considered implementation reports on the management plans for:

- Te Waikoropupu Springs Scenic Reserve (October 2017)
- Molesworth Recreation Reserve (December 2017)
- Abel Tasman Foreshore Scenic Reserve (March 2018)
- Nelson Lakes National Park (April 2018)

Members were impressed overall with the progress made and the range and amount of work completed.

A schedule of implementation monitoring reports for management plans is provided to the Board at each meeting.

The Board has been kept informed about the work DOC is doing to review the future of Molesworth Station, with the impending expiry of the farming lease in June 2020. The Board will retain a strong connection with the Molesworth Steering Committee throughout this process.

## 6.3. Other Conservation Boards liaison

The Board held a joint meeting with the West Coast *Tai Poutini* Conservation Board at Karamea in April 2018.

Agendas and minutes were regularly exchanged with the West Coast *Tai Poutini*, Canterbury Aoraki, and Southland Conservation Boards.

Summary of liaison roles:

<b>Liaison with</b>	<b>Member</b>
West Coast Tai Poutini Conservation Board	Barbara Stuart
Canterbury Aoraki Conservation Board	Amelia Taylor, Steve Knight

#### **6.4. New Zealand Conservation Authority liaison**

Robyn Jebson, the new NZCA liaison person attended the joint meeting with the West Coast Tai Poutini Board at Karamea in April 2018. Robyn provided an update on NZCA activities to both boards.

Copies of all agendas and minutes are exchanged between the Board and NZCA.

### **7. Community advocacy and involvement**

All Board members have responsibility for liaising with other groups when opportunities arise. Some members are specifically appointed to represent the Board on other groups or organisations (see section 5).

The Board considers that forming connections with conservation organisations and members of the public is very important. Meetings were held in different parts of the Nelson Marlborough region and opportunities for the public to attend Board meetings are advertised.

Members of the public attended the Public Forum at several of the year's meetings and a range of issues were raised. The Board appreciated their input and efforts made to attend the meetings and responded by letter with a response to questions asked or concerns raised.

Issues raised through the Public forum included:

- Chancet Rocks at Ward Beach – damage from vehicles
- Downstream impacts of forestry following storm events
- Future management of Molesworth Station
- Proposed developments for the Oparara Basin
- Proposed Mokihinui addition to Kahurangi National Park
- Processes around management of the Old Ghost Road

#### **7.1. Community awareness and visibility**

The Board is interested in what is happening in conservation in communities and so has a practice of inviting representatives from community organisations to present at each meeting. Speakers this year have represented:

- Kaipupu Wildlife Sanctuary
- Mohikinui-Lyell Back-country Trust (Old Ghost Road)

- Friends of Flora
- Picton Dawn Chorus
- Forest and Bird
- Department of Conservation
- Helicopter Charter Karamea
- Federated Mountain Clubs

These included voluntary groups carrying out huge amounts of conservation work within the community. The Board recognises and appreciates volunteers and thanks them for the work done in this area.

Murray Poulter represented the Board on the regional assessment panel for applications to the DOC Community Fund. The Board received a report on how groups that had received funding were tracking.

The Board maintains a presence on the Department's website. Members also attended a conservation-related events, both those organised by the Department and the community.

The Board has thought about ways to make its work more visible over the year and published an article in the Nelson Marlborough Farming News in June.

## **7.2. Training for members**

Amelia Taylor attended Te Pukenga Atawhai during the year. The Board has agreed to strongly encourage all Board members to attend Te Pukenga Atawhai when the opportunity arises.

Katie McNabb attended a SMART Marine Mammal training course. SMART (Sustainable Marine Mammal Actions in Recreation and Tourism) is a voluntary collaboration between commercial boat operators and DOC for the protection of marine mammals in New Zealand.

A workshop on the CMS review process was held for Board members in October 2017.

A facilitated strategic planning workshop was held in October 2017.

The Board are committed to learn Te reo and Te Kanga, practising Waiata and Karakia at each meeting. They have undertaken to learn the correct pronunciation of Te Reo words and place-names that might arise during the meeting, this is updated at the beginning of each meeting.

Members received a refresher on the Treaty of Waitangi and a presentation on the Instruments of Settlement from the Department's Treaty Settlement Ranger, Aroha Gilling.

The Board stayed overnight at Onetahua marae in Golden Bay in October and received a briefing on kawa for the powhiri and staying on a marae.

In addition to the regular updates on the Department's activities provided in the status report which is considered at each meeting, the Board received additional briefings and updates on a wide range of conservation-related work.

The Department provides an update on conservation activities within the local area at each meeting location.

## 8. Strategic plan and report-back on actions

Referred to regularly

The Board spent some time this year on strategic planning.

This involved considering who the Board's stakeholders were (who we create value for) and who we are as an organisation.

We put some thought into the value we create, how we create that value and what resources we have available to do this.

Central to the Board's effective functioning is relationships.

We developed some guiding principles and an action plan for 2018. This is attached below.

We refer to this regularly in our meetings and check on progress against our agreed actions.

Appendix One provides a report back on our actions to July 2018.



## Strategic Plan 2018

*Manako katoatia a Aotearoa i tō tātou piringa ki te taiao me tōna whakaukatanga  
All New Zealanders value a connection to our environment by actively  
working together for a sustainable future*

### Guiding principles

Growing understanding

Sharing values and knowledge

Strengthen networks and connections to foster collaborative action

Celebrate success to raise awareness and demonstrate value

Thinking for the future

Adopting a New Zealand perspective

### Direction for 2018 – an action plan

#### Action 1: Give effect to Treaty principles

- 1.1 Contribute to hui with iwi (for example, on improving iwi consultation on permissions and CMS review)
- 1.2 Strongly encourage Board members to attend DOC's Pukenga training
- 1.3 Incorporate tikanga, karakia, waiata and Te Reo into Board meetings
- 1.4 Receive an annual presentation from DOC Staff on Treaty Settlement obligations





## Action 2: Increase visibility and profile of Board and members

- 2.1 Members visibly represent Board within their communities and at events
- 2.2 Attend local DOC-led events and maintain regular contact with local DOC Operations Manager
- 2.3 Continue to invite community conservation and recreation groups to present to Board meetings
- 2.4 Meet regularly with local conservation groups and find opportunities to connect with other organisations
- 2.5 Maintain strong links with adjacent Conservation Boards, Molesworth Steering Committee and Fish and Game Council



## Action 3: Provide quality advice to DOC & NZCA across the range of Board functions

- 3.1 CMS review
- 3.2 Future management of Molesworth Recreation Reserve
- 3.3 Kahurangi National Park – monitoring of extended mountain bike season on Heaphy track
- 3.4 Land status re-classifications / additions to national parks



**Stakeholders - who we create value for**

- People – past, present & future
- Government & agencies

**Value**

The value we create:

- Principles
- Behaviours
- Leadership
- Kaitiakitanga

**Processes**

How do we create value:

- Interactions external and internal
- Influencing others

**Resources**

What we have to create value:

- Information
- Expertise
- Relationships
- Frameworks

**Organisation – who we are**

- We value our unique culture
- Manaakitanga

***We are collaborative and challenging – this makes us a highly performing and effective Board***

Relationships

Appendix One: Nelson Marlborough Conservation Board Action Plan 2018 – report back 1 July 2017 to 30 June 2018

<b>Action 1: Give effect to Treaty principles</b>	<b>Report on Actions</b>
<p>1.1 Contribute to hui with iwi (for example, on improving iwi consultation on permissions and CMS review)</p>	<p>There has been limited opportunity for Board members to attend hui with iwi over the last year. The Department has not yet held hui to talk to iwi about how to improve consultation on permissions, nor on the CMS review. The Board understand the Department is carrying out broader strategic work on iwi engagement which is being trialled in this region.</p> <p>The Board remains strongly committed to hearing iwi’s views on these matters.</p>
<p>1.2 Strongly encourage Board members to attend DOC’s Pukenga training</p>	<p>One Board member attended Pukenga this year: Amelia Taylor.</p>
<p>1.3 Incorporate tikanga, karakia, waiata and Te Reo into Board meetings</p>	<p>The Board is incorporating tikanga into each meeting: a welcome karakia, karakia for kai and a closing karakia. We also practice our waiata.</p> <p>A refresher on pronouncing Te Reo words and Maori place-names that might arise during each meeting is carried out at the start of each meeting.</p> <p>A Te Reo folder has been put together for each Board member and this is updated for each meeting with local Maori place-names.</p>
<p>1.4 Receive an annual presentation from DOC staff on Treaty Settlement obligations</p>	<p>We received a presentation at our October meeting from Aroha Gilling, the newly appointed Treaty Settlements ranger for the region. Aroha took us through a refresher on the Treaty of Waitangi and then discussed Instruments of Settlement.</p>
<b>Action 2: Increase visibility and profile of Board and members</b>	<b>Report on Actions</b>

<p>2.1 Members visibly represent the Board within their communities and at events</p>	<p>Board members attended the launch of the joint DOC and Marlborough Institute of Technology predator free training programme – an online toolkit for trapping methods.</p> <p>The Conservation Board nominated the Department of Conservation for an MPI Biodiversity Award for the eradication of the Great White Butterfly. The Board’s nomination won both the Government Award and the Supreme Award. Gina Solomon represented the Board at the award ceremony.</p> <p>The Board published an article in the Nelson Marlborough Farming News in June to profile the Board and its work.</p> <p>Bev Doole and Katie McNabb attend Marlborough Marine Futures workshops for collaborative stakeholder management and protection of the Marlborough Sounds.</p>
<p>2.2 Attend local DOC-led events and maintain regular contact with local DOC Operations Manager</p>	<p>Board members attended translocations of Takahe to Gouland Downs, Kahurangi National Park; and Pateke to Abel Tasman National Park.</p> <p>Board members have made efforts to maintain regular contact with their local Operations Managers, through meetings or phone contact. Members have found it useful being updated on the Department’s work in their local areas outside of the formal Board meeting.</p> <p>Members are committed to improving their connection with local DOC managers and staff and look forward to regular mechanisms such as phone calls or meetings being put in place to enable us to do so.</p>
<p>2.3 Continue to invite community conservation and recreation groups to present to Board meetings</p>	<p>We invited conservation and recreation groups to most of our meetings over the year to keep informed about and connected with the important work of these groups. Presentations were received from:</p> <ul style="list-style-type: none"> <li>• Kaipupu Wildlife Sanctuary</li> </ul>

	<ul style="list-style-type: none"> <li>• Mohikinui-Lyell Back-country Trust (Old Ghost Road)</li> <li>• Friends of Flora</li> <li>• Picton Dawn Chorus</li> <li>• Forest and Bird</li> <li>• Speleological Society</li> </ul>
2.4 Meet regularly with local conservation groups and find opportunities to connect with other organisations	<p>Members report at each meeting when they have met with local conservation groups. Murray Poulter represents the Board on the Tasman Environmental Trust.</p> <p>Murray represented the Board on the regional panel for assessing applications to the DOC Community Fund this year.</p>
2.5 Maintain strong links with adjacent Conservation Boards, the Fish and Game Council and Molesworth Steering Committee	<p>We met with the West Coast <i>Tai Poutini</i> Conservation Board in Karamea in April. The Boards discussed proposals to develop the Oparara Arches and increase tourism there and heard a considerable level of interest in this during the public forum.</p> <p>We intend to meet with the Molesworth Steering Committee next year.</p> <p>We invited Fish and Game Council to attend our Motueka meeting, but they were unable to do so. We will ensure we invite a Fish and Game Council representative to future meetings. We appreciate the input and advice they provide.</p>
<b>Action 3: Provide quality advice to DOC and NZCA across the range of Board functions</b>	<b>Report on Actions</b>
3.1 CMS review	<p>The Board held a workshop on the CMS review process in October 2017. We agreed that the first priority is iwi engagement and want to see this done well.</p>

	DOC is waiting for the outcome of strategic national work to improve engagement with iwi which is being trialed in this region, before commencing iwi consultation on the CMS review.
3.2 Future management of Molesworth Recreation Reserve	The Board discussed the proposed process to determine the future management of Molesworth Recreation Reserve with the Department in June. This is in the context of the farming lease for Molesworth expiring in June 2020.
3.3 Kahurangi National Park – monitoring of extended mountain bike season on the Heaphy track	The first season of the extended mountain bike season on the Heaphy Track (1 May to 30 November) started in 2018 and the New Zealand Conservation Authority has asked for a report following the 2018 and 2020 seasons. We expect to receive a monitoring report from the Department at the end of the 2018 mountain biking season.
3.4 Land status re-classifications / additions to national parks	<p>The Board supported three additions to Abel Tasman National Park: Lindsay Block, Nell Reed Block and Upper Rosser Block.</p> <p>Board provided advice on a proposal to rationalize land status at the Nelson Lakes Visitor Centre and carpark; and on the proposed disposal of land at Wai-iti.</p> <p>The Board has provided advice to the NZCA on stewardship land re-classification priorities for the Northern South Island region.</p>
3.5 Other advice	<p>Expansion of salmon farming in the Marlborough Sounds:</p> <p>The Board wrote to the Minister of Conservation expressing concern about the lack of DOC visibility and advocacy during the whole-of-government process, led by MPI, to relocate and expand salmon farming in the Marlborough Sounds.</p>



Bachner has visited on the lookout at Denison Cairn in the Historic Area  
Proceed: Kåthirvæd