

# *Nelson Marlborough Conservation Board*

## *Annual Report 2011/2012*



*Te Rūnanga Whakauka o Kahurangi ki Kaikōura*

**NELSON MARLBOROUGH CONSERVATION BOARD**

*Herea kia Kōtahi - Working Together*



# **Nelson Marlborough Conservation Board Annual Report 2011-2012**

**Presented to the New Zealand Conservation  
Authority pursuant to Section 6 (O) of the  
Conservation Act 1987**

Published by  
Nelson Marlborough Conservation Board  
c/- Department of Conservation  
Private Bag 5  
Nelson 7041

ISSN 1176-7065 (print)  
ISSN 1178-4113 (online)

**Photographs**

**Front Cover: Board** members (from left) Lynda Neame, Joy Shorrock, Gina Solomon run down a sand dune on Farewell Spit. Ross Hall is at the top of the dune.

**Back cover:** Board members and DOC staff walk to the gannet colony at the end of Farewell Spit

*Cover design: Charmayne King*  
*Photographs by Kay Switzer March 2012*

# CONTENTS

1. Message from the chair, Ross Hall	4
2. Introduction	6
3. Nelson Marlborough Conservancy	6
4. Highlights and key events for the year	8
4.1 Review of the Conservation Management Strategy (CMS)	8
4.2 Progress with plans	8
4.3 Mountain biking trial in Kahurangi National Park	9
4.4 Project Janszoon	9
4.5 Additions to National Parks	9
5. Board Membership	10
5.1 Members' profiles	10
6. Meetings	11
6.1 Field trips	11
6.2 Attendance	12
7. Board Committees	13
7.1 Marine Conservation	13
7.2 Management Planning	13
7.3 Marlborough	15
7.4 Concessions	15
7.5 Liaison	15
8. Other Board Work	17
8.1 Briefings and updates	17
8.2 Strategic plan	17
8.3 Departmental restructuring	17
8.4 Game Animal Council Bill	17
8.5 Community involvement	17

# 1. Message from the chair, Ross Hall

This, my second year as Board Chair, has to some extent been a time of consolidation. With no changes in membership this year, a greater level of experience means the Board has been able to deal effectively with a busy workload. It has also allowed me to settle into the position of Chair, which included the rewarding experience of attending my first Board Chairs' Conference. I found it particularly valuable to be able to observe other Board Chairs, many of whom are gifted speakers. I came away from the conference confident that we are functioning extremely well as a Board.

Management plans have been the major focus of the Board this year. The highlight has been the approval of the Abel Tasman Foreshore Scenic Reserve Management Plan in late June. The significance of this event cannot be understated. It has been an 11 year journey involving a wide cross section of the community and much angst, to get this plan approved. Though undoubtedly it will not be to everyone's satisfaction, the plan will lead to important changes in concession management along the Abel Tasman coastline. Additionally there should be benefits for the residents and private users of this highly popular area.

The initial public consultation phase of the Conservation Management Strategy (CMS) review process began in late 2011 with Board members attending meetings throughout the conservancy where invited stake holders took part in information gathering exercises. Some clear patterns have emerged which will assist in identifying places and issues to be canvassed in the new CMS. The long anticipated formal review process begins in late 2012. Work has also resumed on the Molesworth Recreation Reserve Management Plan, with a plan approval committee appointed involving several Board members.

However the planning process is not the Board's sole focus in relation to management plans. Through the year we have reviewed the management plan implementation reports of the Abel Tasman and Kahurangi National Parks, along with those of the Te Waikoropupu Springs and the current CMS. These reports represent not only a snapshot of the excellent and often difficult work the Department of Conservation is undertaking, but also highlight the increasingly close relationship the Department has with conservation minded community groups, as well as with the wider community in general. I believe this demonstrates a heartening change over time in the public attitude toward conservation and the environment.

Lastly I must acknowledge that it has been a difficult year for the Department which has undergone a review, leading to a restructure and job losses. Yet the Board has continued to have an excellent relationship with all Department staff. Our Support Officer Kay Switzer has taken this opportunity to retire from the Department. Kay's work for the Board has been inestimable and her assistance to me invaluable as I grow into the role of Board chair. Other staff I must thank are Community Relations Manager Jo Gould; those involved with planning, Katherine Hughes, Rod Witte and Lionel Solly; Pou Kura Taiao Barney Thomas and of course Conservator Neil Clifton.

In December last year the Board sent a letter to the Conservator expressing their appreciation of the work Department staff carry out around the

conservancy. I would like to take this opportunity to reiterate those sentiments and thank the staff for their efforts during what has been a trying time.

A handwritten signature in blue ink, appearing to read "Ross Hall".

Ross Hall

## 2. Introduction

The Nelson Marlborough Conservation Board is appointed by the Minister of Conservation under section 6(P) of the Conservation Act 1987. Board functions are outlined in section 6(M) and the powers, which enable the Board to carry out those functions, are under 6(N) of the Act.

The Conservation Act specifies that the Board's role is to:

- recommend the approval of conservation management strategies;
- approve conservation management plans;
- advise on how conservation management strategies and plans will be put into practice;
- advise on proposed changes to the status of land areas of national and international significance;
- liaise with Fish and Game Councils on conservation matters; and
- carry out other powers delegated to them by the Conservation Minister, the Conservation Act or any other Act.

The Board has a number of functions under section 30 of the National Parks Act 1980. These functions include recommending the review or amendment of national park management plans and recommending approval of these plans by the New Zealand Conservation Authority.

Section 6(O) of the Conservation Act 1987 requires conservation boards to provide the New Zealand Conservation Authority with an annual report as soon as practicable after the 30th June each year. In recognition of this requirement the Nelson Marlborough Conservation Board submits this, its fourteenth annual report.

## 3. Nelson Marlborough Conservancy

The Nelson Marlborough Conservation Board's area of jurisdiction covers the Nelson Marlborough Conservancy, with oversight of the whole of Kahurangi National Park. This includes Abel Tasman, Kahurangi and Nelson Lakes National Parks, Mt Richmond Forest Park, Molesworth Station and important nature reserves such as Takapourewa (Stephens Island) and Farewell Spit.

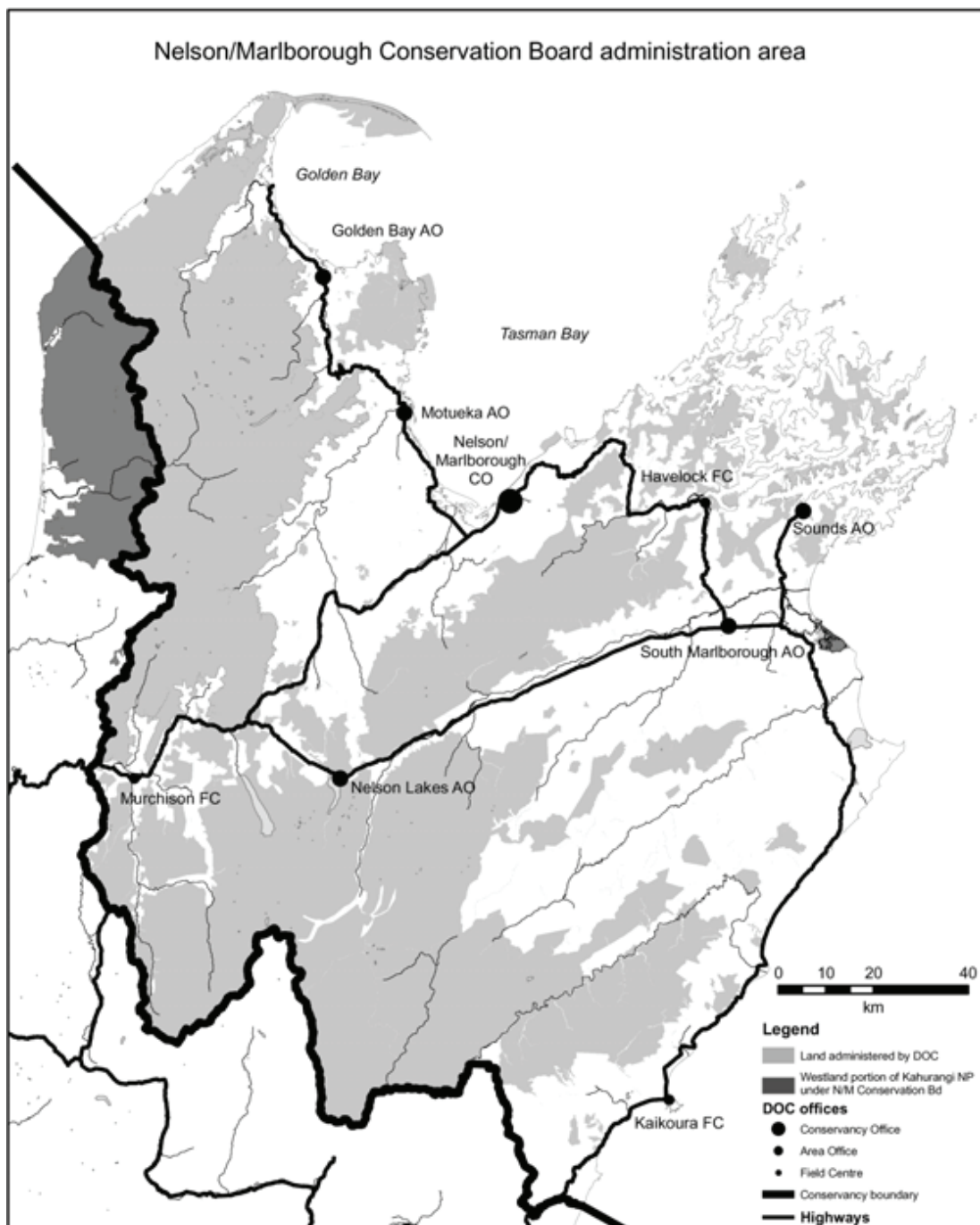
The area provides for a wide range of recreational uses including in the Marlborough Sounds and Ka Whata Tu o Rakihouia, the Conservation Park in the Kaikoura Ranges. There are also four Marine Reserves in the conservancy - Long Island/Kokomohua, West Haven, Tonga Island and Horoirangi.



There are about 750 historic places, both Maori and European, including archaeological sites, historic backcountry huts, a whaling station and cob cottages in South Marlborough.

Species protection programmes in the area cover tuatara, endemic frogs, Powelliphanta snails, great spotted kiwi, Hutton's shearwater, weka, kaka, black fronted tern and blue duck and include a "mainland island" at Nelson Lakes (the Rotoiti Nature Reserve Programme).

The Board's area of jurisdiction covers some of New Zealand's best known visitor sites, including the Abel Tasman Coastal Track, the Heaphy Track and the Queen Charlotte Track. There are over 300 other walks and tracks totalling more than 1950 kilometres.



## **4. Highlights and key events for the year**

### **4.1 Review of the Conservation Management Strategy (CMS)**

Board members contributed to the preparatory work for the long-awaited review of the CMS for Nelson Marlborough throughout the year. At the December 2011 meeting the members were updated on the preliminary CMS public engagement process which they thought was very comprehensive. As part of the process, several board members attended hui with iwi and meetings with stakeholders at Blenheim, Nelson and Motueka.

### **4.2 Progress with plans**

#### **Molesworth Recreation Reserve Management Plan**

The draft management plan for the Molesworth Recreation Reserve made progress after a delay while agreement on how tangata whenua values were described was reached. In June 2012 the plan was in the final stages before being publicly notified.

#### **Abel Tasman Foreshore Scenic Reserve Management Plan**

A management plan for the Abel Tasman Foreshore Scenic Reserve was approved in June 2012 to come into effect from 1 November 2012. 104 submissions were received on the draft plan and hearings were held in November and December 2011.

The plan was approved by the Abel Tasman Foreshore Scenic Reserve Management Plan Approval Committee (a sub-committee of the Conservation Board) which had representation from Tasman District Council, iwi and the Conservation Board and had delegated powers and functions from the Conservation Board to approve the Abel Tasman Foreshore Scenic Reserve Management Plan. The Board thanks the members of this Committee for the significant work undertaken in hearing submissions on the draft plan and making decisions on submissions.

#### **Implementation Monitoring**

The Board considered implementation reports on the Abel Tasman National Park Management Plan, Kahurangi National Park Management Plan and Te Waikoropupu Springs Management Plan. Members were impressed overall with the progress made and the range and amount of work completed.

The implementation report on the current CMS was considered at the September 2011 meeting. Members noted the amount of work currently done with community involvement. They considered that the implementation report showed the complexity of the conservancy and the extent of the work as well as the many achievements of Department of Conservation staff and others involved. They felt that this was something that many people may not

appreciate so moved to have the report sent to all local Members of Parliament and put on the department's website.

### **4.3 Mountain biking trial in Kahurangi National Park**

The Board is very interested in the effects of its decision to allow a three year winter trial of mountain biking in the Park, primarily on the Heaphy Track. On the information received so far by the Board it seems that mountain biking has been a very popular recreational choice with few adverse effects on the Park's natural values but some positive effects on increased usage of the Park during winter and some economic benefits to communities at both ends of the Heaphy Track. Usage is primarily by New Zealand cyclists and it seems likely that the high initial interest in biking the Heaphy will drop once the novelty has decreased.

### **4.4 Project Janszoon**

The Board was excited to hear about this project at its May 2012 meeting. The project provides very substantial funding through a trust to achieve ambitious conservation and restoration aims over a thirty year period. Members were encouraged that private sector charitable funding had been made available to support the important conservation task of protecting the values of the Abel Tasman area and to extend that work in a way that could not have been funded by the government. They look forward to hearing of progress on this visionary project.

### **4.5 Additions to National Parks**

There were no additions to National Parks this year.

## 5. Board Membership

All ten members are appointed by the Minister for Conservation including two members nominated by Te Runanga o Ngai Tahu. There were no new appointments during the year with some members' terms of office rolled over until 30 June 2013.

### 5.1 Members' profiles



**Ross Hall** is from Dovedale. A keen tramper, he also has experience in horticulture, a background in outdoor recreation and interests in ecology and ornithology. He joined the Board in October 2007 for a year and was re-appointed for a three year term in 2008. He was first appointed Chair in September 2010 and re-appointed by members in September 2011.



**Ian Mitchell** is a viticulturalist from Marlborough's Wairau Plain with extensive experience in public land administration and management through his career as Commissioner of Crown Lands. Ian joined the Board in 2005. He also convenes the Marlborough Committee and the represents the Board on the Molesworth Steering Committee. Ian was appointed Deputy Chair in September 2010 and re-appointed in September 2011.



**Maurice Manawatu** was first appointed on the recommendation of Te Runanga o Ngai Tahu in 1998 and has continued to serve ever since. He was re-appointed for a further term during 2010. He is affiliated to Ngati Kuri and Ngai Tahu. He owns and operates a Maori tourism venture in Kaikoura and is chair of Te Runanga o Kaikoura.



**Gina Solomon** of Kaikoura was appointed in 2006 on the recommendation of Te Runanga o Ngai Tahu. She is affiliated to Ngati Kuri, Ngai Tahu, Kurahaupo, Ngati Koata, Te Atiawa and Ngati Toa. She is an active member of Te Runanga o Kaikoura and has held various positions within the organisation. She has a passion for conservation and experience in providing an iwi perspective on environmental issues. Gina represents her Runanga on a number of committees promoting iwi values.



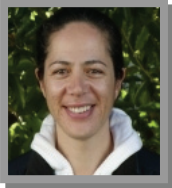
**Lynda Neame** lives in Blenheim. She first joined the Board in 2007. She is experienced in air quality and water quality issues, with an interest in waste treatment systems and the impact of discharges on receiving environments. She is involved with habitat maintenance and restoration projects, particularly Te Whanau Hou project at Grovetown Lagoon. Lynda is also involved with iwi and Forest & Bird.



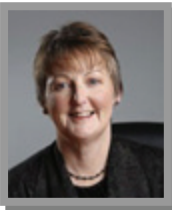
**Joe Puketapu** who joined the Board in September 2009 lives in Blenheim. He has experience in providing an iwi perspective on conservation issues. He is the chair of Waikawa Marae at Picton and a director of the Nelson Marlborough District Health Board, Trustee Te Atiawa Manawhenua Trust, Trustee Kimi Hauora PHO and Chair - Iwi Health Board. His iwi affiliations are with Te Atiawa Nui Tonu.



**Mairangi Reiher** of Golden Bay is of Ngati Tama/Te Atiawa/Te Arawa iwi. Her interests are centred on the preservation of cultural sites, waahi tapu and the conservation of natural flora and fauna. She is currently a trustee of the Tasman Bays Heritage Trust and an iwi representative for the Nelson Provincial Museum. She is an advisor to the Golden Bay Museum and is also on the board of the Ngati Tama Trust. She is involved with the Whakapapa Komiti with Ngati Tama, Te Atiawa and Ngati Rarua Te Ati Awa Iwi Trust as well as serving on the Manawhenua Ki Mohua and Onetahua Marae committees. She joined the Board in December 2010.



**Joy Shorrock** was appointed to the Board in December 2010. She is a traditional Maori weaver and a teacher of this art form. Joy is an active member of Te Awhina Marae and is on the marae board. She is also a member of the Kaiteriteri Recreation Reserve Board and a member of the Abel Tasman Birdsong Trust and the Motueka Museum Board. Joy has a particular interest in the preservation of New Zealand's natural resources. Her iwi affiliations are Te Atiawa, Ngati Rarua, Ngati Tama, Ngati Kuia and Ngati Koata ki te Tau Ihu. She lives in Motueka.



**Sue Brown** farms with her partner. They have a dairy farm in Ferntown, Golden Bay and a pastoral grazing block in Stanley Brook in the Motueka Valley. Sue is actively involved in the Aorere Catchment Group with the NZ Landcare Trust and is currently Dairy Section Chair for Federated Farmers Golden Bay province. She was appointed to the Board in December 2010.



**Bob Dickinson** has extensive experience in management and director positions and held the position of CEO of Tasman District Council for 17 years. He is a keen user of public conservation land, as a tramp, skier, boatie and climber, with a special interest in geology and history. He was appointed to the Board in December 2010 and he lives in the Redwood Valley.

## 6. Meetings

Five meetings were held during the financial year 2011/12. These were:

July	Nelson
September	St Arnaud (2 days)
December	Whites Bay
March	Farewell Spit (2 days)
May	Nelson

### 6.1 Field trips

The September meeting was held at the Department of Conservation's Nelson Lakes Area Office

Board members heard from staff from the Nelson Lakes Area Office of the Department about the results of the mainland island project at Rotoiti. They visited the upgraded displays at the Nelson Lakes Visitor Centre and were

very impressed by them. They also visited the new facilities at West Bay campground and saw some of the area office's innovative new projects aimed at recycling and reducing the costs and impacts of waste removal and sewage treatment in remote areas. An additional highlight of this meeting was a visit to the recently purchased historic Glenhope Railway Station which still had notices from 1916 on its walls.

The December meeting was held in the Whites Bay Surf clubrooms which are managed by the Department in conjunction with the Surf Club and used widely by schools and community groups. Members were able to see the results of a 30 year community programme of weed clearance and replanting which had resulted in a network of walking tracks through the bush and attractive and well-used camping and picnic areas.

In March members were able to travel along Farewell Spit with one of the two concessionaires, observe dune formation and a gannet colony and stay at the historic Lighthouse Keeper's House overnight. John Mason, the Golden Bay Area Manager, showed the group the remains of a whale stranded several months ago and outlined the department's and public's response to the spate of summer strandings. As the Board left the Lighthouse Keeper's cottage we observed another example of unpredictable tidal and dune formation - the bus of another concessionaire stuck axle-deep in a tidal pond.

## 6.2 Attendance

The table below shows the numbers of board meeting attended during the year. In addition, members attended other meetings and events in their role as Board members.

Member	Home	Attended
Ross Hall	Dovedale	5/5
Ian Mitchell	Blenheim	4/5
Maurice Manawatu	Kaikoura	3/5
Lynda Neame	Blenheim	5/5
Gina Solomon	Kaikoura	4/5
Joe Puketapu	Blenheim	2/5
Sue Brown	Collingwood	4/5
Bob Dickinson	Nelson	5/5
Joy Shorrock	Motueka	4/5
Mairangi Reiher	Takaka	5/5

## **7. Board Committees**

Membership of Board committees was reviewed as new members joined the board. Key areas of work are identified below.

### **7.1 Marine Conservation**

The purpose of this committee is to provide a link between the Board's wider communities of interest, the Board and the Department in relation to issues associated with marine conservation.

Members at the end of the 2011/2012 year were: Lynda Neame (Convenor), Gina Solomon, Joe Puketapu and Joy Shorrock. The Marine Conservation Committee has two subcommittees covering the Long Island/Kokomohua Marine reserve and Horoirangi marine reserve. These were set up by the Board to provide for the involvement of key groups associated with each marine reserve. Lynda Neame represents the Board on the Long Island-Kokomohua sub-committee and Joy is the Board's representative on the Horoirangi sub-committee.

Board members Gina Solomon and Maurice Manawatu are actively involved in Te Korowai o te Tai o Marokura, an initiative originally started by the Nelson Marlborough Conservation Board. The Board made a submission on the draft Te Korowai (Kaikoura Coastal) strategy which endorsed the group's formal vision and the emphasis on achieving a flourishing, rich and healthy environment. The submission also made detailed suggestions for changes that would make the document clearer and provide for ongoing monitoring. The Board's submission noted that it was commendable that the draft strategy had been achieved by such a diverse group of people.

Members received a briefing on the provisions of the Marine and Coastal (Takutai Moana) Act at the July 2011 meeting.

### **7.2 Management Planning**

This committee is to advise the Department in relation to strategic direction and planning for the management of conservation land, in particular National Parks. By agreement with members, smaller committees are set up to work on individual management plans as the need arises, which includes working with department staff on the preparation of draft plans.

Members of the management planning committee at the end of the 2011/2012 year were: Ross Hall (Convenor) and Mairangi Reiher. The subcommittees are the Conservation Management Strategy (CMS) Review sub-committee (members Ross Hall, Gina Solomon, Lynda Neame, Sue Brown, Ian Mitchell and Mairangi Reiher) and the Molesworth Plan sub-committee.

#### **Conservation Management Strategy**

The Board considered proposals from the Department on an engagement strategy at the first meeting of this financial year in July 2011 and agreed that

members would attend consultation meetings in their areas and those relevant to their areas of interest and encourage participation with their own networks. At least six members of the board attended workshops and hui on the new CMS during this financial year.

Members received information from the Department on its plans for public engagement at the September 2011 meeting. At the December 2011 meeting department planners reported on the results of public engagement up to that point. This had included eight invited stakeholder workshops at eight different locations, three iwi hui and two publicly advertised workshops as well as stands at the Nelson Ecofest and Marlborough Garden Show where individuals were invited to pinpoint areas important to them on giant maps.

At the May 2012 meeting members expressed concern about losing the momentum achieved in the consultation work on the new CMS owing to departmental changes in resourcing which would give priority to CMS preparation in other conservancies.

### **Molesworth Management Plan**

The Molesworth Steering Committee, appointed by the Minister of Conservation under the Reserves Act, is responsible for preparing a Conservation Management Plan for the reserve. Ian Mitchell represents the Board on the Molesworth Steering Committee. Good progress has been made on drafting the plan, although there was some delay while discussions were held with iwi about some of the plan's provisions. The Conservation Board has the responsibility for approving the Management Plan.

The Board agreed to appoint some members of the Molesworth Steering Committee on to the Board's sub-committee to hear submissions on the draft Plan. At the May 2012 meeting the Board appointed Gina Solomon, Ian Mitchell and Lynda Neame to the Molesworth Management Plan Sub-committee. They are joined by Hamish Ensor, Mark Solomon and Gerry Soanes from the Molesworth Steering Committee.

### **Abel Tasman Foreshore Scenic Reserve Management Plan Approval Committee**

This scenic reserve is an unusual one as it is administered by an Administration Committee appointed by the Minister of Conservation (comprising the CEO Tasman District Council and Department's Nelson Marlborough Conservator). The Board agreed to delegate its powers and functions to approve the management plan for the Abel Tasman Foreshore Scenic Reserve to a sub-committee of the Board (known as the Management Plan Approval Committee). In 2011 the following Board members and other suitable persons were appointed to the Committee: Trevor Norris (Tasman District Council councillor), Ross Hall (Conservation Board), Joy Shorrock (representing Tiakina te Taiao iwi), Mairangi Reiher (representing Manawhenua ki Mohua iwi), and the Reserve Administration Committee (Neil Clifton, DOC and Dennis Bush-King, Acting CEO of Tasman District Council). The Management Plan Approval Committee heard submissions on the draft plan and made decisions on submissions. The plan was approved on 25 June 2012.



### **7.3 Marlborough**

The purpose of this committee is to advise the Conservancy on issues associated with conservation in Marlborough. Members are Ian Mitchell (convenor), Maurice Manawatu, Gina Solomon, Lynda Neame and Joe Puketapu. Ian Mitchell reports on conservation projects in the region and Gina Solomon provides updates on Kaikoura activities at each meeting.

### **7.4 Concessions**

The purpose of this committee is to advise the department on policy matters associated with concession management and also to provide advice on specific concession applications where appropriate. Members at the end of the 2011/2012 year were: Ross Hall (convenor), Gina Solomon, Joe Puketapu, Bob Dickinson, Mairangi Reiher and Joy Shorrocks. The committee is regularly updated on all concessions applications and approvals.

This year has been the first in which the committee has operated under the new national concessions processing system. It has meant the committee is only formally involved in the concessions process when one of the trigger points agreed upon last year is activated. In practice this system has worked well with the committee involved most often when there has been an application for a new activity, although there were also applications for research work that activated triggers.

Activity "...likely to have a significant environmental impact..." is also a trigger and a notable example was for continuing access to Sams Creek for mining exploration. This application involved a field trip for some board members.

Continuing the trend of past years there has been considerable filming activity using conservation land, although from the perspective of the Board as a whole this has not been without controversy. Concerns were raised at the number of applications for filming using helicopters being approved at short notice, however it has proved difficult to avoid this situation given this is a very weather-dependant activity.

Late in the year the sub committee was involved in reworking its own guidelines for sporting events on conservation land. This has resulted in an increase in the number of participants who can compete in most events while also tightening some the criteria around events. It is pleasing to see that other conservancies are now looking at these guidelines.

The committee raised questions with departmental staff on several concession applications and put in a submission on an application to extend a lease at the Farewell Spit Visitor Centre to draw to the decision makers' attention the need to appropriately recognise the cultural and heritage values in visitor interpretation.

### **7.5 Liaison**

All Board members have responsibility for liaising with other groups when opportunities arise and some members have specific roles in liaison.

## **Liaison with other Conservation Boards**

### **West Coast Tai Poutini Conservation Board**

Sue Brown is the liaison person. She attended the WCTP Board's meeting and field trip in May 2012 and reported on this to the May Board meeting.

### **Canterbury/Aoraki Conservation Board**

There is no specific member responsible for liaising with this board but agenda are exchanged and members invited to attend the other board's meetings if there are common issues and a suitable opportunity arises.

### **New Zealand Conservation Authority**

Ross Hall attended the Conservation Board chairpersons' conference and reported to the Board on this at the May 2012 meeting. The Board raised the issue of how boards could best continue to meet their obligations under Section 4 of the Conservation Act for discussion at the conference. In December and May members were pleased to welcome Judy Hellstrom, NZCA member, liaison person for our region and former Nelson Marlborough Board chair, to the meetings.

### **Tasman Environmental Trust**

The Trust was established as an independent organisation to assist in the protection and maintenance of Tasman and Nelson natural areas. The Trust administers the Cobb Dam Mitigation Fund which funds community based aquatic restoration projects in Golden Bay. Philip Simpson, a former Board member, is the Board's representative on the Trust. Minutes are exchanged.

### **Molesworth Steering Committee**

The Department of Conservation manages Molesworth Station as a Recreation Reserve under a lease to Landcorp Farming. The lease provides for a Steering Committee appointed by the Minister of Conservation with an independent Chair and representation from Landcorp Farming, Ngai Tahu, the Nelson Marlborough Conservation Board, the Department of Conservation and conservation and recreation interests. Ian Mitchell was appointed by the Minister to represent the Board.

### **Walking Access Commission**

The regional field advisor from the Walking Access Commission provided an update on the Commission's work at the December and May meetings.

### **Abel Tasman Foreshore Advisory Forum**

Ross Hall represents the Board on the Abel Tasman Foreshore Advisory Forum.

### **Fish and Game Nelson Marlborough Region**

The organisations exchanged agenda and minutes.

## **8. Other Board Work**

### **8.1 Briefings and updates**

In addition to the regular updates on the Department's activities provided in the status report which is considered at each meeting the Board received additional briefing and updates. Topics covered were the Freedom Camping bylaws proposed for the Nelson Marlborough region, the use of 1080, the Department's heritage work, translocations of birds, feral cats, a Memorandum of Understanding with Nelson Forests Ltd for Mt Richmond Forest Park, the management of the Marlborough Sounds Foreshore Reserves and the role of private accommodation on public conservation land.

### **8.2 Strategic plan**

The Board reviewed its strategic plan and amended it with a focus on training of members. The plan now covers the period 2011–2014.

### **8.3 Departmental restructuring**

The Conservator for Nelson Marlborough outlined the proposed changes in structure and organisation for the department and noted the reduced numbers of staff in the Nelson Marlborough Conservancy. Members raised concerns about the effect of the changes on conservation work and wrote to both the Conservator and the Prime Minister.

### **8.4 Game Animal Council Bill**

The Board had in previous years expressed concerns about the proposal to establish a separate body to deal with hunting and had made submissions on the Establishment Committee proposal. The Game Animal Council Bill was introduced in October 2011. A representative from the New Zealand Deerstalkers Association spoke at the Board's December meeting about the possible benefits of the proposed council. In March the Board received a briefing on the draft legislation. The Board's submission on the Bill reflected their consistent view that the proposed stand-alone body was unnecessary, potentially detrimental to New Zealand's indigenous flora and fauna and would divert resources away from important conservation work.

### **8.5 Community involvement**

The Board believes that working with conservation organisations and members of the public is very important. Meetings are held in different parts of the Nelson Marlborough conservancy and opportunities for the public to attend Board meetings are advertised. Members of the public attended several of the year's meetings and a range of issues were raised. The Board appreciated their input and efforts made to attend the meetings and responded by letter with a response to questions asked or concerns raised.

This report is presented to the New Zealand Conservation Authority as required by the Conservation Act and distributed to interested parties. Members of the public are welcome to attend Conservation Board meetings. If you would like more information on the Nelson Marlborough Conservation Board please see the website [www.conservationboards.org.nz](http://www.conservationboards.org.nz) or contact the Board Support Officer, at the Department of Conservation in Nelson phone (03) 546 3139 or e-mail [nelsonmarlboroughboard@doc.govt.nz](mailto:nelsonmarlboroughboard@doc.govt.nz).

