

*Nelson Marlborough
Conservation Board
Annual Report 2015/2016*



Nelson Marlborough Conservation Board Annual Report 2015-2016

**Presented to the New Zealand Conservation
Authority pursuant to Section 6 (O) of the
Conservation Act 1987**

Published by
Nelson Marlborough Conservation Board
c/- Department of Conservation
Private Bag 5
Nelson 7041

ISSN 1176-7065 (print)

ISSN 1178-4113 (online)

Photographs

Front Cover: Nelson Marlborough Conservation Board with Associate Minister Nicky Wagner at Onetahuti Bridge, Abel Tasman National Park, October 2015

Back cover: Anchorage Beach, Abel Tasman National Park, October 2015

Photographs by Kath Inwood

CONTENTS

<u>1.</u>	<u>MESSAGE FROM THE CHAIR, BOB DICKINSON</u>	<u>4</u>
<u>2.</u>	<u>INTRODUCTION</u>	<u>6</u>
<u>3.</u>	<u>NELSON MARLBOROUGH REGION</u>	<u>6</u>
<u>4.</u>	<u>STRATEGIES AND PLANS</u>	<u>8</u>
	4.1. CONSERVATION MANAGEMENT STRATEGY (CMS)	8
	4.2. MANAGEMENT PLANS	8
<u>5.</u>	<u>ADVOCACY AND ADVICE</u>	<u>9</u>
	5.1. ADVICE TO THE DEPARTMENT	9
	5.2. CONCESSION APPLICATIONS	9
	5.3. COMMUNITY ADVOCACY	9
<u>6.</u>	<u>COMMUNITY ENGAGEMENT</u>	<u>10</u>
	6.1. COMMUNITY AWARENESS	10
	6.2. COMMUNITY INVOLVEMENT	10
	6.3. COMMUNITY VISIBILITY	10
<u>7.</u>	<u>BOARD MEMBERSHIP</u>	<u>11</u>
	7.1. MEMBERS' PROFILES	11
<u>8.</u>	<u>MEETINGS</u>	<u>13</u>
	8.1. BOARD MEETINGS	13
	8.2. ATTENDANCE	13
	8.3. FIELD TRIPS	13
<u>9.</u>	<u>BOARD COMMITTEES AND REPRESENTATION</u>	<u>14</u>
	9.1. CONCESSIONS SUBCOMMITTEE	14
	9.2. IWI SUBCOMMITTEE	14
	9.3. TASK-SPECIFIC COMMITTEES	14
	9.4. REPRESENTATION	14
	9.5. LIAISON	15
<u>10.</u>	<u>TRAINING FOR MEMBERS</u>	<u>16</u>
	10.1. DEPARTMENT BRIEFINGS AND UPDATES	16
	10.2. PUKENGA ATAWHAI	16
	10.3. ISSUES OF INTEREST	16

1. Message from the chair, Bob Dickinson

This is my second report as Chair of the Nelson Marlborough Conservation Board.

Board changes

There were no Board changes in 2015, with all members continuing from the previous year. At the end of 2015-16, however we must thank and farewell Eric Hall, who has provided excellent advice and service to our Board. I would also like to welcome Murray Poulter to the Board for his three year term commencing on 1 July 2016.

Departmental changes

Changes in the Department resulted in managerial relationships with the Board moving from the Partnerships team to the Operations team during the year. We would like to acknowledge great support from Jan Hania and Martin Rodd of the Partnerships Team for the past few years, and look forward to continue working closely with Roy Grose and Jo Gould of the Operations Team as we move into 2016-17 and beyond.

Minister's Letter of Expectation

Each Board receives an Annual Letter outlining the Minister's Expectations for the coming year. This provides clear guidance to each Board.

In our Region key expectations were:

- (a) The CMS Review - This process continues to be delayed by the non-availability of key planning staff.
- (b) Abel Tasman Foreshore Scenic Reserve partial review – This was completed during the year, and Board members took an active role in progressing the review.
- (c) Conservation Management Plan for Wairau Boulder Bank – This process has commenced and preliminary work is underway. This process is likely to involve the Board during the 2016-17 year.

Board visit with the Associate Minister to Anchorage

A highlight for us this year was an overnight field trip into Anchorage in the Abel Tasman National Park, accompanied by Hon Nicky Wagner, Associate Minister of Conservation. The field trip included demonstrations of a self-setting trap, dune restoration, and a visit to the Onetahuti Bridge. The design of this bridge was developed in consultation with mana whenua iwi. It reflects the shape of the hull of a waka, with curling rails and paddles at each end. The Board and Minister stayed overnight in the Anchorage hut.

National Park additions

A number of additions were made to national parks in the region this year. The Board took part in considering and supporting these additions.

Five sites in the Golden Bay area were progressed for addition to Kahurangi Park. Three sites were added through Nature Heritage Fund purchases and two were sites that were

originally omitted from the Park due to their mining potential, but had since been identified as unsuitable.

A property at Awaroa Beach and sandspit, which was purchased through a Givealittle crowdfunding campaign, was accepted as a gift by the Crown and added to Abel Tasman National Park. The Board supported this addition, and members attended the celebration event when it was added to the Park.

We are pleased to see these pieces of land being assessed and included in national parks for their ongoing protection.

Management plan changes

Board members considered the partial review of the Abel Tasman Foreshore Scenic Reserve Management Plan and took part in the hearings. A range of changes were made including designating Tonga Quarry as a coastal access point, moving the commercial transfer point from Watering Cove to Observation Bays, and changing requirements for equipment movement.

Board members were also involved in the process of the proposed Kahurangi National Park Management Plan amendment to extend the mountain bike season. This process commenced this year, with hearings scheduled for the 2016-17 year.

Pukenga Atawhai

Two Board members attended a Pukenga Atawhai training session in March 2016. Board members appreciate access to this opportunity to increase cultural knowledge and awareness alongside DOC staff.

Concession advice

The Board provided comments on concession applications for a Zipline activity at Kaikoura, and for Carbon Farming at various sites across the region. These were both new activities for the region. The Board supported both applications, providing key concerns for the Department to consider when progressing these applications.

Chairs' briefings

In September there was a briefing for Board Chairs in Wellington. This was an excellent opportunity for Chairs to meet and be briefed on national conservation issues. Whitebait management was a key issue raised by Board Chairs this year. It is hoped that these briefings will continue in future years.



Bob Dickinson
July 2016

2. Introduction

The Nelson Marlborough Conservation Board is appointed by the Minister of Conservation under section 6(P) of the Conservation Act 1987. Board functions are outlined in section 6(M) and the powers, which enable the Board to carry out those functions, are under 6(N) of the Act.

The Conservation Act specifies that the Board's role is to:

- recommend the approval of conservation management strategies;
- approve conservation management plans;
- advise on how conservation management strategies and plans will be put into practice;
- advise on proposed changes to the status of land areas of national and international significance;
- liaise with Fish and Game Councils on conservation matters; and
- carry out other powers delegated to them by the Conservation Minister, the Conservation Act or any other Act.

The Board has a number of functions under section 30 of the National Parks Act 1980. These functions include recommending the review or amendment of national park management plans and recommending approval of these plans by the New Zealand Conservation Authority (NZCA).

Section 6(O) of the Conservation Act 1987 requires conservation boards to provide the NZCA with an annual report as soon as practicable after the 30th June each year. In recognition of this requirement the Nelson Marlborough Conservation Board submits this annual report.

3. Nelson Marlborough region

The Nelson Marlborough Conservation Board's area of jurisdiction covers all of Nelson and Marlborough, with oversight of the whole of Kahurangi National Park. This also includes Abel Tasman and Nelson Lakes National Parks, Mt Richmond Forest Park, Molesworth Station and important nature reserves such as Takapourewa (Stephens Island) and Farewell Spit.

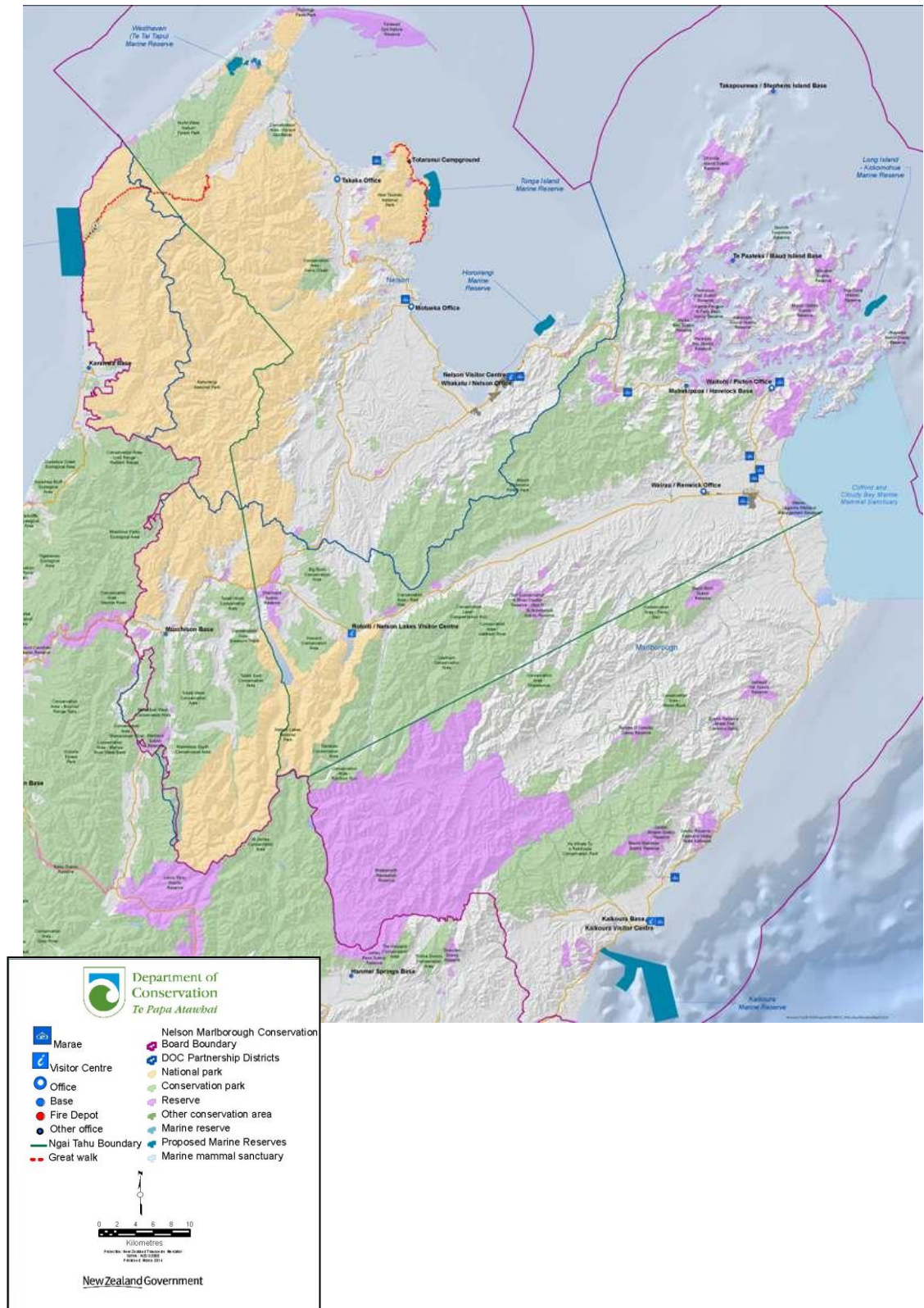
The area caters for a wide range of recreational activities in the Marlborough Sounds and Ka Whata Tu o Rākihōia, the Conservation Park in the Kaikoura Ranges. There are also five Marine Reserves in Nelson Marlborough - Long Island/Kokomohua, West Haven, Tonga Island, Horoirangi and Hikurangi.

There are about 750 historic places, both Maori and European, including archaeological sites, historic backcountry huts, a whaling station and cob cottages in South Marlborough.

Species protection programmes in the area cover tuatara, endemic frogs, Powelliphanta snails, great spotted kiwi, Hutton's shearwater, weka, kaka, black fronted tern and whio (blue duck) and include a "mainland island" at Nelson Lakes (the Rotoiti Nature Reserve Programme).

The Board's area of jurisdiction also covers some of New Zealand's best known visitor sites, including the Abel Tasman Coast Track, the Heaphy Track and the Queen Charlotte Track. There are over 300 other walks and tracks totalling more than 1950 kilometres.

The Board area includes the rohe of the eight iwi of Te Tau Ihu (Te Atiawa, Ngati Rarua, Ngati Koata, Ngati Kuia, Rangitane, Ngati Toa Rangitira, and Ngati Tama), and the Ngati Kuri and Ngati Waewae hapu of Ngai Tahu. There are 11 Marae within the Board area.



4. Strategies and plans

4.1. Conservation Management Strategy (CMS)

The Board has been waiting this year for the commencement of the CMS review. This has been delayed awaiting the availability of planning staff.

4.2. Management plans

Wairau Boulder Bank/ Te Pokohiwi o Kupe

The Board is happy to support the development of this management plan.

Abel Tasman Foreshore Scenic Reserve Management Plan

A partial review of the Abel Tasman Foreshore Scenic Reserve Management Plan was carried out in 2015. Board representatives took part in the process as members of the Management Plan Approval Committee and the Abel Tasman Foreshore Advisory Forum.

Kahurangi National Park Management Plan

A proposed amendment to the Kahurangi National Park Management Plan was initiated in March 2016. At its June meeting, the Board established a committee to work with staff on the amendment process, and provided input into the proposed amendment for public notification. The amendment process will continue in the 2016-17 year.

Implementation monitoring

The Board considered implementation reports on the management plans for Nelson Lakes National Park, Kahurangi National Park, Te Waikoropupu Springs, and Molesworth Recreation Reserve.

Members were impressed overall with the progress made and the range and amount of work completed.



With Minister Wagner at Anchorage, Abel Tasman National Park. August 2015

5. Advocacy and advice

5.1. Advice to the Department

The Board provided advice to the Department on the following issues in the 2015-16 year:

- Additions to Kahurangi National Park in the Cobb Valley and Mount Burnett areas were supported subject to further consultation with iwi
- The need to advocate for progression of the Reserves and Other Lands Disposal Bill through Parliament to ensure long-standing agreements around land exchanges could progress.
- Support for the Minister to accept the gift of the Awaroa Beach and incorporate this into Abel Tasman National Park.

5.2. Concession applications

Concession applications for a zipline at Kaikoura and carbon farming in the region were both generally supported, with some concerns raised for consideration.

5.3. Community advocacy

The Board made a submission to the Marine Protected Areas Bill in March 2016, and this was shared on the Marlborough Marine Futures website.

The Board wrote to the Sustainable Summits Conference in June 2016 encouraging a broad approach to consideration of the issues around sustainability.



Learning about climbing asparagus from Chris Rowse of Project De-Vine, Golden Bay, November 2015

6. Community engagement

6.1. Community awareness

The Board is interested in what is happening in conservation in communities and so has a practice of inviting representatives from community organisations to present at each meeting. Speakers this year have represented:

- Royal Forest and Bird
- The anti- 1080 lobby
- Project De-Vine
- NZ fur seal interactions with people
- Aquaculture Industry
- Walking Access New Zealand

These included voluntary groups carrying out huge amounts of conservation work within the community. The Board recognises and appreciates volunteers and thanks them for the work done in this area.

6.2. Community involvement

The Board believes that working with conservation organisations and members of the public is very important. Meetings were held in different parts of the Nelson Marlborough region and opportunities for the public to attend Board meetings were advertised.

Members of the public attended the Public Forum at several of the year's meetings and a range of issues were raised. The Board appreciated their input and efforts made to attend the meetings and responded by letter with a response to questions asked or concerns raised.

Public forum issues raised were:

- Use of 1080
- Rights of nature
- Marine ecosystem protection
- Te Tai Tapu block potential for inclusion into Abel Tasman National Park
- Nga Whenua Rahui 25th anniversary
- Hutton's Shearwater Trust

6.3. Community visibility

The Board maintains a presence on the Department's website. Members also attended a wide range of Conservation related events, both those organised by the Department and the community.

7. Board membership

All 11 members were appointed by the Minister for Conservation including two members nominated by Te Runanga o Ngai Tahu.

All members whose terms of office expired on 30 June 2015 were reappointed for a further 3 year term until 30 June 2018, so there were no changes to membership.

Bob Dickinson was re-elected to the Chair position, and Gina Solomon re-elected as Deputy Chair from 1 July 2015.

7.1. Members' profiles



Bob Dickinson (Chairperson) has extensive experience in management and director positions and held the position of CEO of Tasman District Council for 17 years. He is a keen user of public conservation land as a tramper, skier, recreational boatie, climber and mountain biker, with a special interest in geology and history. He was appointed to the Board in December 2010 and lives in Redwood Valley.



Sue Brown is a dairy farmer from Golden Bay. Sue is the Provincial President of Federated Farmers Golden Bay and has been awarded as a Landcare Ambassador by the NZ Landcare Trust for her involvement in the Aorere Catchment Group project. She was appointed to the Board in December 2010.



Bev Doole was appointed to the Board in July 2014. Bev is a freelance writer and editor. She has experience in writing resource management plans and policy documents. She is highly knowledgeable about conservation issues in the region. Her outdoor recreation interests are walking, kayaking and gardening.



Eric Hall was appointed to the Board in July 2014. Eric is Project Manager for Signature Homes. He has extensive experience in project and staff management. He was appointed an honorary ranger for the North West Nelson Recreational hunting area and has been a member of the New Zealand Deerstalkers Association for 40 years. His outdoor recreation interests are hunting and fishing.



Steve Knight was appointed to the Board in May 2014. Steve is a self-employed viticulturalist. He has extensive experience in management and strategic planning. He has been involved in the Young Farmers Contest as both a committee member and participant for many years. His outdoor recreation interests are hunting and tramping.



Katie McNabb was appointed to the Board in July 2014. Katie is a boating education tutor and member of the Coastguard Boating Education Services Board. She has experience in board membership, policy and planning. She is involved in the restoration of Perano whaling station. Her outdoor recreation interests are sailing, skiing, biking and boating.



Mairangi Reiher of Golden Bay is of Ngati Tama/Te Atiawa/Te Arawa iwi. Her interests are centred on the preservation of cultural sites, waahi tapu and the conservation of natural flora and fauna. She has extensive board member experience and serves on the Manawhenua Ki Mohua and Onetahua Marae committees, and the Cobb Mitigation Fund. She joined the Board in December 2010.



Joy Shorrock was appointed to the Board in December 2010. She is a traditional Maori weaver and a teacher of this art form. Joy is an active member of Te Awhina Marae and is on the marae board. She is also a member of the Kaiteriteri Recreation Reserve Board. Her iwi affiliations are Te Atiawa, Ngati Rarua, Ngati Tama, Ngati Kuia and Ngati Koata ki te Tau Ihu. She lives in Motueka.



Gina Solomon of Kaikoura was appointed in 2006 on the recommendation of Te Runanga o Ngai Tahu. She is affiliated to Ngati Kuri, Ngai Tahu, Kurahaupo, Ngati Koata, Te Atiawa and Ngati Toa. She is an active member of Te Runanga o Kaikoura and for the last 25 years has held various positions within the organisation. Gina represents her runanga on a number of committees promoting iwi and conservation values. Gina was elected Deputy Chair in October 2013. Gina is a Director on the Queen Elizabeth II National Trust and she is an RMA Commissioner.



Amelia Taylor was appointed in November 2013 on the recommendation of Te Runanga o Ngai Tahu, to replace Maurice Manawatu. She is a whale watch sea crew guide and works in the hospitality industry. She is involved in many local environmental groups with interests in beach and stream protection, species recovery and caring for birds. She is currently studying the use of New Zealand plants in medicine. She is affiliated to Ngati Kuri, Ngati Koata, Te Atiawa, and Ngati Toa.



Dr Aat Vervoorn was appointed to the Board in July 2014. Aat is a former University Associate Professor. He has worked with government agencies on policy development and understands public processes. He has an understanding of conservation issues in the region having previously worked as a mountain guide and ranger and been involved in mountain search and rescue. His outdoor recreation interests are tramping, mountaineering, skiing, kayaking and photography.

8. Meetings

8.1. Board meetings

Six meetings were held during the 2015/16 financial year. These were:

August	Motueka (2 days)
October	Picton
November	Takaka (2 days)
February	Kaikoura (2 days)
April	Nelson (2 days)
June	Picton

8.2. Attendance

The table below shows the number of Board meetings attended by members out of the total number of meetings held during the year.

Member	Home	Attended
Bob Dickinson	Nelson	6/6
Bev Doole	Blenheim	6/6
Eric Hall	Nelson	5/6
Steve Knight	Blenheim	6/6
Katie McNabb	Picton	6/6
Mairangi Reiher	Takaka	6/6
Sue Brown	Collingwood	5/6
Joy Shorrocks	Motueka	3/6
Gina Solomon	Kaikoura	4/6
Amelia Taylor	Kaikoura	2/6
Aat Vervoorn	Nelson	6/6

Members attended other meetings and events in their role as Board members, including committee meetings and representative roles.

8.3. Field trips

In August 2015 the Board stayed overnight at Anchorage hut in the Abel Tasman National Park, and visited sites of interest with DOC and Project Janszoon staff.

In February the Board visited the Point Keane seal colony in Kaikoura and the Hutton's shearwater nursery on the Kaikoura peninsula.

In November the Board visited Project De-Vine weed clearing sites in Golden Bay.

In April 2016, the Board visited the Brook Waimarama Sanctuary in Nelson.

9. Board committees and representation

Membership of Board committees was reviewed in July, at the beginning of the Board year.

9.1. Concessions subcommittee

The purpose of this subcommittee was to advise the Department on policy matters associated with concession management and to provide advice on specific concession applications where appropriate. Members for the 2015-16 year were: Mairangi Reiher, Eric Hall, Sue Brown and Amelia Taylor.

The committee is only formally involved in the concessions process when one of the agreed trigger points is activated, most often being a new type of activity.

9.2. Iwi subcommittee

The purpose of this subcommittee is to work together with iwi. Members for 2015-16 were Joy Shorrock, Amelia Taylor, Gina Solomon, Bev Doole, Bob Dickinson and Mairangi Reiher.

9.3. Task-specific Committees

For the partial review of the Abel Tasman Foreshore Scenic Reserve Management Plan, Bob Dickinson was a member of the Management Plan Approval Committee, and Joy Shorrock a member of the Abel Tasman Foreshore Advisory Forum.

Members of a committee set up to work with the Department on an amendment of the Kahurangi National Park Management Plan were Bob Dickinson, Sue Brown and Mairangi Reiher. This amendment was for a proposed extension to the mountain bike season on the Heaphy Track.

9.4. Representation

Katie McNabb represented the Board on the Long Island-Kokomohua Marine Reserve Committee and Joy Shorrock was the Board's representative on the Horoirangi Marine Reserve Committee.

Ian Mitchell, a former Board member, was the Board's representative on the Molesworth Recreation Reserve Steering Committee. The Department of Conservation manages Molesworth Station under a lease to Landcorp Farming.

Philip Simpson, a former Board member, was the Board's representative on the Tasman Environmental Trust, an independent organisation to assist in the protection and maintenance of Tasman and Nelson natural areas. The Trust also administers the Cobb Dam Mitigation Fund which funds community-based aquatic restoration projects in Golden Bay.

Joy Shorrock represented the Board on the Abel Tasman Foreshore Advisory Forum, a community forum set up to advise the Administration Committee on matters affecting the Abel Tasman Foreshore Reserve.

9.5. Liaison

All Board members have responsibility for liaising with other groups when opportunities arise and some members have specific roles in liaison.

Liaison with other conservation boards

Sue Brown was the liaison person with the West Coast Tai Poutini Conservation Board. Agendas and minutes were exchanged.

Amelia Taylor was the liaison person with the Canterbury/Aoraki Conservation Board. Agendas and minutes were exchanged.

New Zealand Conservation Authority

NZCA met in Nelson in April 2016, and shared an informal meeting and joint field trip to the Brook Waimarama Sanctuary with the Board. A few Board members also accompanied NZCA on their visit into Abel Tasman National Park for an overnight stay at Anchorage hut.

In October 2015, and February and June 2016, members were pleased to welcome Judy Hellstrom, NZCA liaison person for the region, to the meeting.

A Conservation Board Chairpersons' meeting with the Ministers, NZCA and senior managers in Wellington was attended by Bob Dickinson in September 2015.

Ministers

The Board hosted the Associate Minister of Conservation, Hon Nicky Wagner, and Minister for the Environment Hon Dr Nick Smith, at its August 2015 meeting. Hon Nicky Wagner also accompanied the Board on its field trip into Abel Tasman National Park.

Other community groups

Royal Forest and Bird Protection Society of New Zealand representatives regularly attend Board meetings. Other organisations with occasional attendance include Fish and Game New Zealand, Federated Mountain Clubs of New Zealand, and Nelson Tramping Club.

10. Training for members

10.1. Department briefings and updates

In addition to the regular updates on the Department's activities provided in the status report which is considered at each meeting, the Board received additional briefings and updates. Topics covered this year were:

- Pilot implementation update
- Our Nature
- Tenure review update
- Heaphy Track snail monitoring
- Te Araroa Trail
- Beekeeping Concessions
- Stewardship Review
- Awaroa Beach gifting
- DOC Community Fund
- Carbon Farming
- Great White Butterfly Eradication

The Department also provided an update on conservation activities within the local area at each meeting location.

10.2. Pukenga Atawhai

Two members, Katie McNabb and Bev Doole, attended a multi-day Pukenga Atawhai course at Rapaki Marae, Lyttleton in March 2016.

10.3. Issues of interest

Other issues of particular interest to the Board this year were:

- Marine Protected Areas Bill
- Great White Butterfly eradication
- Tenure review process
- North West South Island pilot programme implementation

This report is presented to the New Zealand Conservation Authority as required by the Conservation Act and distributed to interested parties. Members of the public are welcome to attend Conservation Board meetings. If you would like more information on the Nelson Marlborough Conservation Board please see the website www.conservationboards.org.nz or contact the Board Support Officer, at the Department of Conservation in Nelson phone (03) 546 3151 or e-mail nelsonmarlboroughboard@doc.govt.nz.

