

*Nelson Marlborough
Conservation Board
Annual Report 2016/2017*



Nelson Marlborough Conservation Board Annual Report 2016-2017

**Presented to the New Zealand Conservation
Authority pursuant to Section 6 (O) of the
Conservation Act 1987**

Published by
Nelson Marlborough Conservation Board
c/- Department of Conservation
Private Bag 5
Nelson 7041

ISSN 1176-7065 (print)

ISSN 1178-4113 (online)

Photographs

Front Cover: Engineers' Bridge, Molesworth Station, April 2017

Back cover: Ship Cove, Marlborough Sounds, October 2016

Photographs by Kath Inwood

CONTENTS

<u>1.</u>	<u>MESSAGE FROM THE CHAIR, BOB DICKINSON</u>	<u>4</u>
<u>2.</u>	<u>INTRODUCTION</u>	<u>6</u>
<u>3.</u>	<u>NELSON MARLBOROUGH REGION</u>	<u>6</u>
<u>4.</u>	<u>STRATEGIES AND PLANS</u>	<u>8</u>
	4.1. CONSERVATION MANAGEMENT STRATEGY (CMS)	8
	4.2. MANAGEMENT PLANS	8
<u>5.</u>	<u>ADVOCACY AND ADVICE</u>	<u>9</u>
	5.1. ADVICE TO THE DEPARTMENT	9
	5.2. CONCESSION APPLICATIONS	9
	5.3. COMMUNITY ADVOCACY	9
<u>6.</u>	<u>COMMUNITY ENGAGEMENT</u>	<u>10</u>
	6.1. COMMUNITY AWARENESS	10
	6.2. COMMUNITY INVOLVEMENT	10
	6.3. COMMUNITY VISIBILITY	10
<u>7.</u>	<u>BOARD MEMBERSHIP</u>	<u>11</u>
	7.1. MEMBERS' PROFILES	11
<u>8.</u>	<u>MEETINGS</u>	<u>13</u>
	8.1. BOARD MEETINGS	13
	8.2. ATTENDANCE	13
	8.3. FIELD TRIPS	13
<u>9.</u>	<u>BOARD COMMITTEES AND REPRESENTATION</u>	<u>14</u>
	9.1. CONCESSIONS SUBCOMMITTEE	14
	9.2. IWI SUBCOMMITTEE	14
	9.3. TASK-SPECIFIC COMMITTEES	14
	9.4. REPRESENTATION	14
	9.5. LIAISON	15
<u>10.</u>	<u>TRAINING FOR MEMBERS</u>	<u>16</u>
	10.1. DEPARTMENT BRIEFINGS AND UPDATES	16
	10.2. ISSUES OF INTEREST	16

1. Message from the chair, Bob Dickinson

This is my third report as Chair of the Nelson Marlborough Conservation Board.

Board celebration

The Board celebrated its 100th meeting in October 2016 with a special cake, and reflection on the achievements of the Conservation Boards that had gone before.

Board changes

Murray Poulter joined our board this year and has settled in very well. At the end of this year four board members depart. We must thank and farewell Art Vervoorn, Sue Brown, Mairangi Reiher and Bob Dickinson. My personal thanks to these four departees for a job well done.

Departmental changes

This year the Departmental organisation has been very stable with minimal changes. This has been a significant benefit for our Conservation Board. We continue to be very well served by Roy Grose, Jo Gould, Kath Inwood, and Barney Thomas.

Minister's Letter of Expectation

Each board receives an Annual Letter outlining the Minister's expectations for the coming year.

In our region, some of the key expectations were:

- a) The need for Board members to be active in their communities and bring a strong, well informed community voice to the Board table.
- b) Advising on the Board's priorities for reclassification of Stewardship land within our district.
- c) Advising on proposed changes of status for nationally and internationally important areas which include World Heritage, Ramsar and National Parks.
- d) Building and enhancing the Board's relationship withiwi, ie. Te Tau Ihu and Ngāi Tahu and paying special attention to Section 4 obligations.

Joint Conservation Board Meeting

A major highlight for us this year has been a 2-day joint meeting in Hanmer with the Canterbury Aoraki Conservation Board. This meeting was also attended by the Director General Lou Sanson and this was an excellent opportunity to meet and discuss common issues such as the future status of the St. James Conservation Area and its neighbour the Molesworth Recreational Reserve.

Addition to Abel Tasman National Park

The property at Awaroa Beach and sandspit, which was purchased through a Givealittle crowdfunding campaign, was accepted as a gift by the Crown and added to Abel Tasman National Park during the 2015-16 year.

Board members attended the celebration event, at which Ministers Nicky Wagner and Nick Smith officiated. The event had a high level of Manawhenua iwi involvement.

Board Chairs annual forum

During the year I attended the briefing for Board Chairs at Premier House in Wellington. These are an excellent opportunity for Chairs to meet and be briefed on national conservation issues. It is hoped that these briefings will continue in future years.

Management Plan Changes

Board members spent a lot of time hearing public submissions on the Partial Review of the Kahurangi National Park Management Plan, which proposed a 3-month extension of the mountain bike season on the Heaphy Track. After consideration of submissions and officers' reports the Board recommended to the NZCA that a 2-month extension be approved with conditions. This recommendation has now been approved by NZCA.

Kaikoura Earthquake

The 7.8 magnitude earthquake that struck Kaikoura in November 2016 had a significant impact on areas within the Nelson Marlborough Conservation Board area. There has been a huge amount of work done in response, including checking on the impacts to wildlife, tracks and facilities; upgrading facilities through the St Arnaud area to cope with the increased traffic; and work towards reinstatement of State Highway One.

Two Board members, Gina Solomon and Amelia Taylor, were unable to attend the December Board meeting and have had to use alternative travel methods to attend meetings since the earthquake.

I would like to thank all the staff and contractors who have been working hard to get facilities and services operational again.

Finally, I would like to thank all past and present Board members, and DOC staff with whom I have worked over the last seven years - it has been hugely rewarding and a real pleasure.



Bob Dickinson
July 2017



Cutting the cake at the 100th Nelson Marlborough Conservation Board meeting

2. Introduction

The Nelson Marlborough Conservation Board is appointed by the Minister of Conservation under section 6(P) of the Conservation Act 1987. Board functions are outlined in section 6(M) and the powers, which enable the Board to carry out those functions, are under 6(N) of the Act.

The Conservation Act specifies that the Board's role is to:

- recommend the approval of conservation management strategies;
- approve conservation management plans;
- advise on how conservation management strategies and plans will be put into practice;
- advise on proposed changes to the status of land areas of national and international significance;
- liaise with Fish and Game Councils on conservation matters; and
- carry out other powers delegated to them by the Conservation Minister, the Conservation Act or any other Act.

The Board has a number of functions under section 30 of the National Parks Act 1980. These functions include recommending the review or amendment of national park management plans and recommending approval of these plans by the New Zealand Conservation Authority (NZCA).

Section 6(O) of the Conservation Act 1987 requires conservation boards to provide the NZCA with an annual report as soon as practicable after the 30th June each year. In recognition of this requirement the Nelson Marlborough Conservation Board submits this annual report.

3. Nelson Marlborough region

The Nelson Marlborough Conservation Board's area of jurisdiction covers all of Nelson and Marlborough, with oversight of the whole of Kahurangi National Park. This also includes Abel Tasman and Nelson Lakes National Parks, Mt Richmond Forest Park, Molesworth Station and important nature reserves such as Takapourewa (Stephens Island) and Farewell Spit.

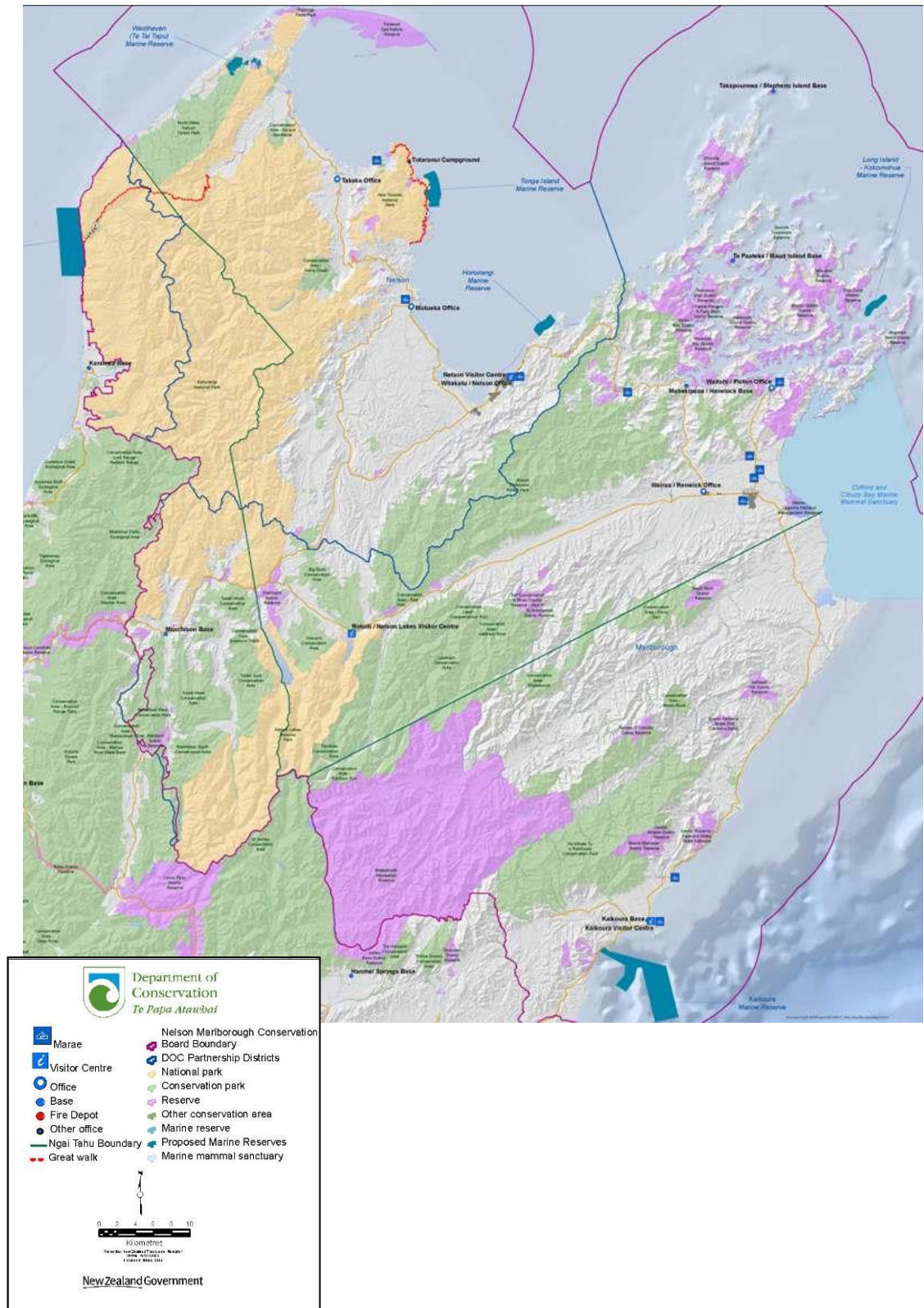
The area caters for a wide range of recreational activities in the Marlborough Sounds and Ka Whata Tu o Rakihouia, the Conservation Park in the Kaikoura Ranges. There are also five Marine Reserves in Nelson Marlborough - Long Island/Kokomohua, West Haven, Tonga Island, Horoirangi and Hikurangi.

There are about 750 historic places, both Maori and European, including archaeological sites, historic backcountry huts, a whaling station and cob cottages in South Marlborough.

Species protection programmes in the area cover tuatara, endemic frogs, Powelliphanta snails, great spotted kiwi, Hutton's shearwater, weka, kākā, black fronted tern and whio (blue duck) and include a "mainland island" at Nelson Lakes (the Rotoiti Nature Reserve Programme).

The Board's area of jurisdiction also covers some of New Zealand's best-known visitor sites, including the Abel Tasman Coast Track, the Heaphy Track and the Queen Charlotte Track. There are over 300 other walks and tracks totalling more than 1950 kilometres.

The Board area includes the rohe of the eight iwi of Te Tau Ihu (Te Ātiawa, Ngāti Rārua, Ngāti Koata, Ngāti Kuia, Rangitāne, Ngāti Toa Rangatira, Ngāti Apa ki te Rā Tō, and Ngāti Tama), and the Ngāti Kuri and Ngāti Waewae hapu of Ngāi Tahu. There are 11 Marae within the Board area.



4. Strategies and plans

4.1. Conservation Management Strategy (CMS)

The CMS review has been scheduled to commence in the 2017-18 year.

4.2. Management plans

Wairau Boulder Bank/ Te Pokohiwi o Kupe

The Board is happy to support the development of this management plan, which is being jointly developed with Rangitāne iwi.

Kahurangi National Park Management Plan

An amendment to the Kahurangi National Park Management Plan was completed in 2017 to extend the mountain bike season on the Heaphy Track. The season for mountain bikes is now from 1 May to 30 November each year.

Implementation monitoring

The Board considered implementation reports on the management plans for Abel Tasman Foreshore Scenic Reserve, Nelson Lakes National Park, Abel Tasman National Park, and Kahurangi National Park.

Members were impressed overall with the progress made and the range and amount of work completed.



Board members in the Molesworth with the Director General

5. Advocacy and advice

5.1. Advice to the Department

The Board provided advice to the Department on the following issues in the 2016-17 year:

- The Board provided feedback in November 2016 on a land transfer issue relating to the proposed Waimea Dam
- The Board provided feedback on priorities for land reclassification of stewardship land within the region

5.2. Concession applications

There were no concession applications that met the Board triggers for consultation with the Board.

5.3. Community advocacy

The Board wrote to the Director General in October 2016 to raise issues about the potential impact on public access to Sawcut Gorge of a proposed private land sale.

The Board also wrote to the Minister of Conservation in June 2017 to comment on the process used in the MPI proposal for relocation of salmon farms in the Marlborough Sounds.



Board members at Ship Cove

6. Community engagement

6.1. Community awareness

The Board is interested in what is happening in conservation in communities and so has a practice of inviting representatives from community organisations to present at each meeting. Speakers this year have represented:

- Royal Forest and Bird
- NZ Game Animal Council
- South Marlborough Landscape Restoration Trust
- Totaranui 250 Trust
- Mountain Bike Trails Trust
- Fish and Game Council Nelson Marlborough

These included voluntary groups carrying out huge amounts of conservation work within the community. The Board recognises and appreciates volunteers and thanks them for the work done in this area.

6.2. Community involvement

The Board believes that working with conservation organisations and members of the public is very important. Meetings were held in different parts of the Nelson Marlborough region and opportunities for the public to attend Board meetings were advertised.

Members of the public attended the Public Forum at several of the year's meetings and a range of issues were raised. The Board appreciated their input and efforts made to attend the meetings and responded by letter with a response to questions asked or concerns raised.

Public forum issues raised were:

- Predator Free 2050
- Land reclassification
- Access to the Rainbow Road and Sawcut Gorge
- Climate change
- Use of 1080
- Wilding pines
- Oparara Arches proposed development
- Mangarakau Ramsar application

6.3. Community visibility

The Board maintains a presence on the Department's website. Members also attended a wide range of Conservation related events, both those organised by the Department and the community.

7. Board membership

All 11 members were appointed by the Minister for Conservation including two members nominated by Te Rūnanga o Ngāi Tahu.

Murray Poulter joined the Board in July 2016, on the departure of Eric Hall.

Bob Dickinson was re-elected to the Chair position, and Gina Solomon re-elected as Deputy Chair from 1 July 2016.

7.1. Members' profiles



Bob Dickinson (Chairperson) has extensive experience in management and director positions and held the position of CEO of Tasman District Council for 17 years. He is a keen user of public conservation land as a trumper, skier, recreational boater, climber and mountain biker, with a special interest in geology and history. He was appointed to the Board in December 2010 and lives in Redwood Valley.



Sue Brown is a dairy farmer from Golden Bay. Sue is the Provincial President of Federated Farmers Golden Bay and has been awarded as a Landcare Ambassador by the NZ Landcare Trust for her involvement in the Aorere Catchment Group project. She was appointed to the Board in December 2010.



Bev Doole was appointed to the Board in July 2014. Bev is a freelance writer and editor. She has experience in writing resource management plans and policy documents. She is highly knowledgeable about conservation issues in the region. Her outdoor recreation interests are walking, kayaking and gardening.



Steve Knight was appointed to the Board in May 2014. Steve is a self-employed viticulturalist. He has extensive experience in management and strategic planning. He has been involved in the Young Farmers Contest as both a committee member and participant for many years. His outdoor recreation interests are hunting and tramping.



Katie McNabb was appointed to the Board in July 2014. Katie is a boating education tutor and member of the Coastguard Boating Education Services Board. She has experience in board membership, policy and planning. She is involved in the restoration of Perano whaling station. Her outdoor recreation interests are sailing, skiing, biking and boating.



Murray Poulter was appointed to the Board in July 2016. Murray has extensive experience in scientific research and management, and most recently was the Chief Scientist Atmosphere, Climate and Hazards for NIWA. He enjoys walking, hiking, cycling, canoeing and fishing. He is the Board representative on the Tasman Environmental Trust, and is part owner of a QEII covenanted section of bush.



Mairangi Reiher of Golden Bay is of Ngāti Tama/Te Ātiawa/Te Arawa iwi, and joined the Board in December 2010. Her interests are centred on the preservation of cultural sites, waahi tapu and the conservation of natural flora and fauna. She serves on the Manawhenua Ki Mohua and Onetahua Marae committees, a Tasman Environment Trust Subcommittee and the Golden Bay Museum. She is also involved in the 375th commemoration of Abel Tasman's visit to Golden Bay.



Joy Shorrock was appointed to the Board in December 2010. She is a traditional Maori weaver and a teacher of this art form. Joy is an active member of Te Awhina Marae and is on the marae board. She is also a member of the Kaiteriteri Recreation Reserve Board. Her iwi affiliations are Te Ātiawa, Ngāti Rārua, Ngāti Tama, Ngāti Kuia and Ngāti Koata ki te Tau Ihu. She lives in Motueka.



Gina Solomon of Kaikoura was appointed in 2006 on the recommendation of Te Rūnanga o Ngāi Tahu. She is affiliated to Ngāti Kuri, Ngāi Tahu, Kurahaupō, Ngāti Koata, Te Ātiawa and Ngāti Toa. She is an active member of Te Rūnanga o Kaikoura and for the last 25 years has held various positions within the organisation. Gina represents her runanga on a number of committees promoting iwi and conservation values. Gina was elected Deputy Chair in October 2013. Gina is a Director on the Queen Elizabeth II National Trust and she is an RMA Commissioner.



Amelia Taylor was appointed in November 2013 on the recommendation of Te Rūnanga o Ngāi Tahu. She is a whale watch sea crew guide and works in the hospitality industry. She is involved in many local environmental groups with interests in beach and stream protection, species recovery and caring for birds. She is currently studying the use of New Zealand plants in medicine. She is affiliated to Ngāti Kuri, Ngāti Koata, Te Ātiawa, and Ngāti Toa.



Dr Aat Vervoorn was appointed to the Board in July 2014. Aat is a former University Associate Professor. He has worked with government agencies on policy development and understands public processes. He has an understanding of conservation issues in the region having previously worked as a mountain guide and ranger and been involved in mountain search and rescue. His outdoor recreation interests are tramping, mountaineering, skiing, kayaking and photography.

8. Meetings

8.1. Board meetings

Six meetings were held during the 2016/17 financial year. These were:

August	Motueka
October	Renwick (2 days)
December	St Arnaud
February	Nelson
April	Hanmer Springs (3 days)
June	Motueka

8.2. Attendance

The table below shows the number of Board meetings attended by members out of the total number of meetings held during the year.

Member	Home	Attended
Bob Dickinson	Nelson	6/6
Bev Doole	Blenheim	5/6
Steve Knight	Blenheim	6/6
Katie McNabb	Picton	6/6
Murray Poulter	Motueka	5/6
Mairangi Reiher	Takaka	6/6
Sue Brown	Collingwood	4/6
Joy Shorrocks	Motueka	4/6
Gina Solomon	Kaikoura	5/6
Amelia Taylor	Kaikoura	5/6
Aat Vervoorn	Nelson	4/6

Members attended other meetings and events in their role as Board members, including committee meetings and representative roles.

8.3. Field trips

In October 2016, the Board had a field trip to Ship Cove in the Marlborough Sounds, which will be a key site for the Totaranui 250 commemorations. They also stopped at Motuara Island, a pest-free offshore island where they enjoyed the birdlife, including penguins in nesting boxes.

In April 2017, the Board travelled through Molesworth Station to the joint meeting with the Canterbury Aoraki Board at Hanmer Springs. DOC staff provided information about the historic sites, biodiversity, weeds and wilding pines, as well as discussing current and future management.

9. Board committees and representation

Membership of Board committees was reviewed in July, at the beginning of the Board year.

9.1. Concessions subcommittee

The purpose of this subcommittee was to advise the Department on policy matters associated with concession management and to provide advice on specific concession applications where appropriate. Members for the 2016-17 year were: Mairangi Reiher, Sue Brown, Amelia Taylor, Aat Vervoorn, Murray Poulter and Gina Solomon.

The committee is only formally involved in the concessions process when one of the agreed trigger points is activated, most often being a new type of activity.

9.2. Iwi subcommittee

The purpose of this subcommittee is to work together with iwi. Members for 2016-17 were Mairangi Reiher, Joy Shorrocks, Bob Dickinson, Bev Doole, Amelia Taylor and Gina Solomon.

9.3. Task-specific Committees

Members of a committee set up to work with the Department on an amendment of the Kahurangi National Park Management Plan were Bob Dickinson, Sue Brown and Mairangi Reiher. This amendment was for a proposed extension to the mountain bike season on the Heaphy Track.

Steve Knight and Mairangi Reiher represented the Board on the DOC Community Fund assessment panel.

9.4. Representation

Katie McNabb represented the Board on the Long Island-Kokomohua Marine Reserve Committee and Joy Shorrocks was the Board's representative on the Horoirangi Marine Reserve Committee.

Steve Knight was the Board's representative on the Molesworth Recreation Reserve Steering Committee. The Department of Conservation manages Molesworth Station under a lease to Landcorp Farming.

Murray Poulter was the Board's representative on the Tasman Environmental Trust, an independent organisation to assist in the protection and maintenance of Tasman and Nelson natural areas. The Trust also administers the Cobb Dam Mitigation Fund which funds community-based aquatic restoration projects in Golden Bay.

Joy Shorrocks represented the Board on the Abel Tasman Foreshore Advisory Forum, a community forum set up to advise the Administration Committee on matters affecting the Abel Tasman Foreshore Reserve.

9.5. Liaison

All Board members have responsibility for liaising with other groups when opportunities arise and some members have specific roles in liaison.

Liaison with other conservation boards

Sue Brown was the liaison person with the West Coast Tai Poutini Conservation Board. Agendas and minutes were exchanged.

Amelia Taylor was the liaison person with the Canterbury/Aoraki Conservation Board. Agendas and minutes were exchanged.

New Zealand Conservation Authority

In December 2016 and June 2017, members were pleased to welcome Judy Hellstrom, NZCA liaison person for the region, to the meeting.

Bob Dickinson attended the February NZCA meeting in Christchurch to present the Board's report and recommendation on the proposed amendment to the Kahurangi National Park Management Plan.

A Conservation Board Chairpersons' meeting with the Ministers, NZCA and senior managers in Wellington was attended by Bob Dickinson in August 2016.

Ministers

The Associate Minister of Conservation, Hon Nicky Wagner, and Minister for the Environment Hon Dr Nick Smith, were in attendance at the celebration of the inclusion of the Awaroa sandspit into Abel Tasman National Park in July 2016.

Other community groups

Royal Forest and Bird Protection Society of New Zealand representatives regularly attend Board meetings. Other organisations with occasional attendance include Fish and Game New Zealand, Federated Mountain Clubs of New Zealand, and Nelson Tramping Club.



Nelson Marlborough and Canterbury Aoraki Board members with the Director General at Hanmer Springs

10. Training for members

10.1. Department briefings and updates

In addition to the regular updates on the Department's activities provided in the status report which is considered at each meeting, the Board received additional briefings and updates. Topics covered this year were:

- RMA Plan – Departmental submission processes
- Recreation and tourism related revenue opportunities
- The Department's Business Plan
- A proposal for development of the Oparara Basin
- Kaikoura earthquake updates
- Abel Tasman Coast Track tourism pressures
- Te Tau Ihu Treaty Settlement Protocols
- Draft Kiwi Recovery Plan
- Proposal for salmon farm relocation in the Marlborough Sounds
- Tenure Review
- Future directions for Molesworth and St James
- Ramsar application for Whanganui Inlet, Mangarakau Swamp and Lake Otuhie
- Bird count methodology

At the joint Board's meeting at Hanmer Springs, there was the opportunity to discuss potential future directions for Molesworth and St James Stations. The Boards were also addressed by the Director General Lou Sanson, who spoke on a range of topics, including DOC's 30-year anniversary, tourism pressures, and biodiversity challenges. He also outlined a proposal for integrated management of the Clarence River catchment.

The Department also provided an update on conservation activities within the local area at each meeting location.

10.2. Issues of interest

Other issues of particular interest to the Board this year were:

- Installation of pou whenua in Abel Tasman National Park
- Kaiteriteri Recreation Reserve upgrade
- Marlborough Sounds salmon farm relocation
- The success of the Great White Butterfly eradication

This report is presented to the New Zealand Conservation Authority as required by the Conservation Act and distributed to interested parties. Members of the public are welcome to attend Conservation Board meetings. If you would like more information on the Nelson Marlborough Conservation Board please see the website www.conservationboards.org.nz or contact the Board Support Officer, at the Department of Conservation in Nelson phone (03) 546 3151 or e-mail nelsonmarlboroughboard@doc.govt.nz.

