
East Coast Hawke's Bay Te Tairāwhiti ki Te Matau-a-Māui Conservation Board

Annual Report
1 July 2016 – 30 June 2017



East Coast Hawke's Bay
Te Tairāwhiti ki Te Matau-a-Māui
Conservation Board

ANNUAL REPORT

1 July 2016 – 30 June 2017

*Presented to the New Zealand Conservation Authority
pursuant to Section 6 (O) of the Conservation Act 1987*

Serviced by the Department of Conservation
Te Papaioea/Palmerston North Office
P O Box 11010
Palmerston North 4442

Cover Photographs: Top: East Coast Hawke's Bay Conservation Board at Cape Kidnappers,
October 2016, Marijke Warmenhoven
Lower: Motu Bridge and Falls, July 2016, Gisborne Herald

ISSN 2463-3089 (print)

ISSN 2463-3097 (digital)

Contents

1.0	Chairperson’s Report.....	1
2.0	Introduction.....	3
3.0	Conservation Board Region.....	4
3.1	Coverage.....	4
3.2	Significant areas of natural and historic importance.....	5
4.0	Membership of the Board.....	7
4.1	Member Profiles.....	7
5.0	Board Activities.....	8
5.1	Board meetings.....	8
5.2	Board Member’s Attendance.....	9
5.3	Board sub-committees and liaison.....	9
5.4	Board Training.....	11
5.5	Field Trips.....	12
5.6	Special Events.....	13
6.0	Significant advocacy and statutory work undertaken by the Board.....	14
6.1	Statutory Processes.....	14
6.2	Strategic Planning.....	14
6.3	Advocacy.....	14
6.4	Liaison Work.....	14
7.0	Community involvement in Board Meetings.....	15
7.1	Community visibility.....	15
7.2	Working with the Department of Conservation.....	15
7.3	Taking account of Ministerial priorities for the Department.....	16
7.4	Engaging with the community, including raising the profile of the Board.....	16
8.0	Acknowledgements.....	16
	Appendix 1 – Conservation Act / Board Functioning.....	17
	Appendix II –Annual Work Plan.....	18
	Work Programme Overview.....	18

1.0 Chairperson's Report

Reflecting on my first year as Chair, I would like to personally thank all the Board individually for their special contributions to ensure effective teamwork over the last 12 months. I look forward to working with all those members who made it back for another 12 months, especially Jo Blakeley as my extremely competent Deputy and Vicki Thorpe who continuously shares her legal knowledge along with her vast experience.

I would like to say a very special thanks to departing members Jenny Mauger and John Wauchop. They have both provided guidance across a range of areas. Jenny shared wetland knowledge and the importance of the interrelationships between river catchment, estuary and marine environments as well as Hawke's Bay's cultural heritage. John as our past-Chairperson, guided me into the transition of Chair. His experience and knowledge of this region and all "Conservation Board" things has been immensely appreciated. They will both be missed and I hope we can have the pleasure of their company again through our conservation projects.

As Chair and supported by the rest of the Board, we are feeling frustrated by the slow progress of our long-winded Conservation Management Strategy (CMS) development, but understand the intricacies involved by intertwining this document with Ngati Porou's Nga Whakahaere Takirua. I thank the CMS sub committee of Jo Blakeley, Vicki Thorpe, Marijke Warmenhoven and myself for merging the combined governance, policy and operations milestones to finalise the first draft.

As agreed at the Chair's conference in August 2016 as the Conservation Board elevator speech:

Our country is unique with one third of our land in the public estate.

Our role is to ensure the public is fully represented and involved in how that land is looked after for our children and future generations.

Conservation Boards work with DOC to ensure that the land's well looked after - we are all in this together.

The Board congratulates one of our region's DOC Community Fund recipients for winning the 2017 Supreme Green Ribbon Award. The Whangawehi Catchment Management Group gave last year's board a presentation on their project before we visited, along with Associate Minister Nicky Wagner. This group's efforts over seven years involve iwi, councils and landowners to achieve significant improvements in water quality in the Whangawehi River and in protecting native plants and animals. The Board also encouraged the Gisborne District Council to enter the Protecting our Diversity category with the Wharekopae River catchment project, which I believe should win this award in another few years with the buy-in by that whole community. Our region offers many opportunities for community conservation work that the Board joins where possible.

Finally the Board's liaison roles with our region's DOC Community Fund projects provides a direct link between them and our Board, alongside DOC staff. This is one of our ways that all Board members continue to grow our role in our communities, as well as fulfilling the requirements of a Conservation Board. So I look forward to another active year progressing conservation in East Coast Hawke's Bay together.

Penny Shaw

Chairperson - East Coast Hawke's Bay Te Tairāwhiti ki Te Matau-a-Māui Conservation Board



Photo: Cooks Cove Walkway.

2.0 Introduction

This is the third annual report of the East Coast Hawke’s Bay (ECHB) Te Tairāwhiti ki Te Matau-a-Māui Conservation Board (the Board) which was re-established in March 2014. The Board is one of 15 Conservation Boards appointed by the Minister of Conservation under Section P of the Conservation Act 1987. The functions and powers of the Board are outlined in Sections 6M and 6N respectively. The Board has its own geographically defined area with 7 members for the 2016-2017 year appointed by the Minister of Conservation under the terms of the Conservation Act 1987. The Board is an independent advisory body representing the community and offers interaction between communities and the Department of Conservation, within the area of jurisdiction of the Board.

The Board’s work programme is set in response to the ‘Letter of Expectation’ from the Associate Minister of Conservation dated 19 July 2016.

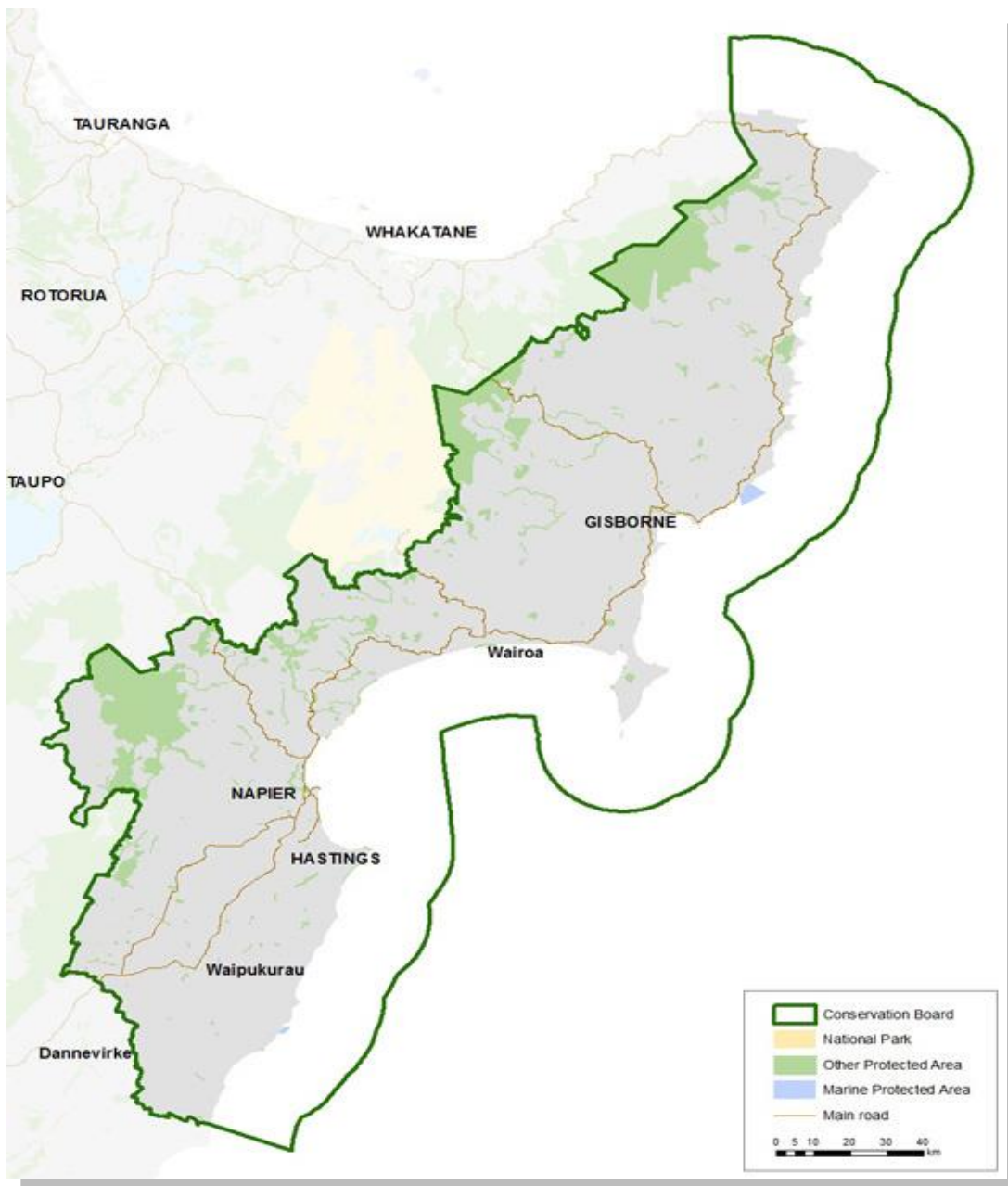


Photo: Combined East Coast Hawke’s Bay and Chatham Islands Conservation Boards at Dame Anne and Jeremy Salmond’s Longbush Ecosanctuary with DOC staff and helpers.

3.0 Conservation Board Region

3.1 Coverage

The East Coast Hawke’s Bay Te Tairāwhiti ki Te Matau-a-Māui Conservation Board’s coverage extends from Te Araroa (north of Gisborne) to Mangaorapa (Central Hawke’s Bay) on the East Coast of the North Island.



Map of East Coast Hawke’s Bay Te Tairāwhiti ki Te Matau-a-Māui Conservation Board area

3.2 Significant areas of natural and historic importance

HAWKE'S BAY

Boundary Stream Mainland Island

Boundary Stream Mainland Island is home to a number of threatened species including North Island brown kiwi, kākā, kōkako, New Zealand falcon (kārearea) and kererū.

Cape Kidnappers Gannet Reserve

The reserve is managed by Department of Conservation to protect gannet nesting sites, the 13 ha reserve includes the Saddle and Black Reef Gannet colonies.

Kaweka Forest Park

The Forest Park is characterised by alpine shrublands, tussock valleys and beech forests with pockets of podocarp.

Many native birds can be found in the area including the North Island brown kiwi, New Zealand falcon (kārearea), North Island kākā, and the blue duck (whio). Ten native freshwater fish species have been recorded in the Mōhaka River.

Ōtātara Pā Historic Reserve

One of the largest and most ancient Māori pa sites in the Hawke's Bay. It is significant for the immense size and large number of terraced dwelling sites and food pits. Remnant earthworks of many of these are still evident today.

Te Angiangi Marine Reserve

On the central Hawke's Bay coast approximately 30 km east of Waipukurau and Waipawa, Te Angiangi Marine Reserve protects a piece of coastline of approximately 446 ha.

The reserve is special in that it contains several marine habitat types, including boulder bank area, rocky intertidal platforms and a sheltered bay that is perfect for snorkelling.

*Photo:
Board visiting
Cape Kidnappers
Gannet Reserve
viewing the beach
erosion on public
access road.*



EAST COAST

Cook Landing Site National Historic Reserve

Photo: Cook's Landing, Gisborne.

On Kaiti Beach in Gisborne, this reserve commemorates the first landing place of James Cook in New Zealand in 1769. The site is believed to be within a short distance of the actual landing site, and not far from Te Toka a Taiāu where the first significant meeting between Māori and European took place.



Raukumara Forest Park

The Raukumara Forest Park is one of the least developed or visited tracts of bush in the North Island. Recreation opportunities include climbing Mount Hikurangi, rafting the Motu River and mountain biking Otipi Road.

Cooks Cove Walkway

The walkway was named after the Cove and the English sailor and explorer, Captain James Cook. He visited the area in 1769 as part of his circumnavigation of New Zealand.

Cooks Cove Walkway is situated at the southern end of Tolaga Bay, 52 km north of Gisborne.

Gray's Bush Scenic Reserve

Gray's Bush Scenic Reserve is a small but highly significant remnant of the tall kahikatea (podocarp) forest which once covered much of the Gisborne Plains. Forested areas are rare on the plains which have been extensively cleared and drained for pastoral farming and agriculture.

It is semi-coastal in character and has a dominant canopy of kahikatea, with significant presence of puriri. It also provides a nesting, resting and feeding habitat for a number of different bird species both native and introduced.

Te Tapuwae o Rongokako Marine Reserve (North of Gisborne)

Protects approximately 2,450 ha of coastline and contains eight marine habitat types that are representative of the area, including inshore reef, rocky intertidal platforms and sediment flats.

Kelp forests, marine snails, kina, sponges, seaweed and a diverse range of fish can be found in the reserve.

4.0 Membership of the Board

Members are appointed to the East Coast Hawke's Bay Te Tairāwhiti ki Te Matau-a-Māui Conservation Board by the Minister of Conservation, and are representative across the different communities and interests within the region.

During 1 July 2016 to 30 June 2017 there were seven members on the Board.

Table 1: summarises the Board membership during the 2016/17 year:

Name	Area	Date first appointed	Term ends
Penny Shaw (Chairperson)	Gisborne	1 July 2014	30 June 2019
Joanne Blakeley (Deputy Chair)	Napier	1 July 2014	30 June 2018
Marijke Warmenhoven	Ruatoria	1 July 2016	30 June 2019
Jenny Mauger	Napier	1 July 2014	30 June 2017
Lucy Meagher	Havelock North	1 July 2016	30 June 2019
Vicki Thorpe	Gisborne	1 July 2014	30 June 2018
John Wauchop	Gisborne	1 July 2014	30 June 2017

4.1 Member Profiles

Name	Personal Profile
Penny Shaw (Chairperson)	Penny is a life member and past president of Tourism Eastland. She has detailed knowledge of the tourism industry on the East Coast and is experienced as a member, president and secretary of boards and committees. Her outdoor recreation interests are gardening, hiking, cycling and travel.
Joanne Blakeley (Deputy)	Jo is a Director of Academic and Student Services at the Eastern Institute of Technology. She has experience in management, policy development and environmental education. Her outdoor recreation interests are tramping, cycling, gardening, farming and sailing.
Dr Lucy Meagher	Lucy is a science teacher at Havelock North High School. She has a degree in agricultural chemistry and has been employed previously by the US Department of Agriculture, Fonterra and AgResearch. She has prior experience as a technical member of the Food Standards ANZ board. Her outdoor interests are in tramping, fishing, and helping in the restoration of wetlands for native birds.
Jenny Mauger	Background in environmental education, policy advice and management planning. Experience on Boards and councils. Involved with bird translocations. Aware of environmental issues. Iwi affiliations: Ngati Kahungungu, Rangitane, Rongomaiwahine.

Vicki Thorpe	Vicki is a qualified barrister and solicitor with 30 years experience in legal practice. She has significant experience on boards and committees with extensive involvement with the local Maori community via The Rangatahi Court. She was a trustee of the Eastland Community Trust and is the Conservation Board's representative on the Te Tapuwae o Rongakako Marine Reserve Committee. Her recreation interests are fishing and skiing
Marijke Warmenhoven	Marijke currently works as a Youth Court Lay Advocate in the Gisborne District Court and also in Te Kooti Rangatahi Marae based Youth Court. She has a Environmental Science with Law degree and has significant experience in Governance, especially Ngati Porou Health and as an inaugural elected Director to Te Runanganui o Ngati Porou. She completed a Certificate in Company Direction with the New Zealand Institute of Directors along with many other governance trainings.
John Wauchop	John has extensive Conservation Board experience, being on previous East Coast Bay of Plenty Board prior to current .Past Regional Adviser, Walking Access Commission and Primary Industry Training Organisation Adviser. Land management experience as former farm manager in the area for 40 years. Extensive involvement with conservation and conservation organisations.

5.0 Board Activities

The Board varies the location of its meetings to ensure that it meets across the region. This enables the Board to view the issues that are arising in the region and to hear from the public and be accessible to them.

During the 2016/17 year, the Board's formal programme comprised 4 meetings and 4 field trips. Meetings of the Board were held in Gisborne (twice), Havelock North and Napier.

Field trips were to Motu, Cape Kidnappers, Longbush Reserve and Boundary Stream.

5.1 Board meetings

Table 2: The Board scheduled four full day meetings

Meeting date	Meeting location and venue
15-16 July 2016	Department of Conservation, Gisborne
14-15 October 2016	Havelock North Function Centre,
17-18 February 2017	Cosmopolitan Club, Gisborne
28-29 April 2017	Department of Conservation, Napier

5.2 Board Member's Attendance

Table 3 below summarises the number of Board meetings and field trips attended by members out of the total number of meetings held during the year. A highlight for the year was the February Board meeting when the East Coast Hawke's Bay Conservation Board combined with the Chatham Islands Conservation Board, sharing ideas and commonalities.

Members attended other meetings and events in their role as Board members, including subcommittee meetings and representative roles.

Board Member	Number of meetings attended (4 held)	Number of field trips attended (4 held)
Penny Shaw	4	4
Joanne Blakeley	4	4
Marijke Warmenhoven	4	4
Jenny Mauger	4	4
Lucy Meagher	4	4
Vicki Thorpe	4	4
John Wauchop	3	3

5.3 Board sub-committees and liaison

The Board formed the following sub-committees for 2016/17:

- Conservation Management Strategy

The purpose of this subcommittee was to advise the Department on all matters associated with the development of the Board's CMS. Several meetings across the year approved the draft descriptions, objectives, policies, Places, values and milestones. Committee members were Penny Shaw, John Wauchop, Marijke Warmenhoven, Jo Blakeley and Jenny Mauger.

- Triggered Concessions

The committee is only formally involved in the concessions process when one of the agreed trigger points is activated. Only one concession application was considered this year by this committee who then made recommendations to DOC and reported back to the Board at the Board meeting. The committee urged the Department to ensure that appropriate consultation with iwi and local hapu is carried out early in the assessment process. Committee members were Penny Shaw and Jenny Mauger.

Advice and Advocacy

All Board members have responsibility for liaising with other groups when opportunities arise and some members have specific roles in liaison.

The following liaison roles were agreed for 2016/17:

Fish and Game Council

Hawke's Bay

Gisborne Penny Shaw

Other Conservation Boards

Bay of Plenty Marijke Warmenhoven

Tongariro-Taupo Vicki Thorpe

Wellington Jenny Mauger

Territorial Authorities

Gisborne Penny Shaw

Hawke's Bay Jo Blakeley

Treaty Partners

Gisborne Marijke Warmenhoven

Hawke's Bay Jenny Mauger

Community Fund Projects

Ngāti Pāhauwera

Whangawehi Catchment Management Group

Whinray Ecological Charitable Trust

Tairāwhiti Environment Centre

Longbush Ecological Trust

Ngāi Tāmanuhiri

Ngatapu Station

Forest Life Force Restoration Trust

Lake Whatumā Wetland Care Group

Friend of A'Deane's Bush

Havelock North Intermediate School

LR and VS Cave (Whareponga Wetland Restoration)

Tutira Partnership

Cape Sanctuary

John Wauchop

Penny Shaw

Vicki Thorpe

Penny Shaw

Vicki Thorpe

John Wauchop

John Wauchop

Jenny Mauger

Jo Blakeley

Jo Blakeley

Jenny Mauger

John Wauchop

Jo Blakeley

Photo: Conservation Board learning about mottled petrel nesting boxes from Boundary Stream volunteer Cathy Mitchell



5.4 Board Training

In addition to the regular updates on the Department's activities provided in the status report which is considered at each meeting, the Board received additional briefings and updates. Topics covered this year were:

- The role and value of volunteers
- CMS review process
- Marine protection and management

The Department also provided an update on conservation activities within the local area at each meeting location.

One board member attended the Nelson office hapu and whanau training session Pukenga Atawhai, in December 2016, which covered local iwi history, iwi organisations and Treaty settlement issues.



Photo: Red Billed Gulls Napier.

5.5 Field Trips

Visits to specific locations provided opportunities for the Board to:

- Become more familiar with the conservation values of key places.
- Discuss management challenges and approaches with DOC staff and stakeholders.
- Increase understanding and opportunities for conservation growth.

2016/17 field trip highlights:

July 2016 – Motu kiwi creche and Whinray Reserve

Enhancing community conservation activities was highlighted during July's trip to Motu. The Board were shown the Motu kiwi crèche, where Steve Sawyer, a trustee of the Whinray Ecological Trust, told stories on the hijinks of kiwi, explained the critical danger that our national icon is in and described the crucial work the Trust does to grow the number of north island brown kiwi in the Gisborne-East Coast area.



Photo: One year old kiwi chick Otahi, held by Steve.

In addition to the kiwi crèche and the pristine podocarp forest of the Whinray bush, the Board visited the nearby 20 ha Motu Scenic Reserve to see its unique oxbow wetland and the original kahikatea swamp forest. The Reserve has a strong weed and pest control programme in place. Interestingly, the Board were shown an example of conservation education for youth, through the work of the Eastland Outdoor Enterprises Trust..

October 2016 – Cape Kidnappers and Cape Sanctuary

Hawke's Bay Operations Manager Dave Carlton took the Board into Cape Sanctuary to show the footprint of the Cape to City Project. The Board saw Tamsin Ward-Smith (Cape Sanctuary Manager) and Sue Dryden's work with the kaka, kakariki and other endangered birds assisted by an inspirational volunteer system. DOC staff showed the Board the gannet colonies and how the public accessway from the beach was being continually eroded away, so they are developing plans to ensure visitor access to the gannet colony also has interpretative information and other facilities.

February 2017 – Longbush Eco sanctuary and reserve

Longbush is one of our region's many projects with DOC's Community Funding. The Board were hosted by Dame Anne and Jeremy Salmond to learn the history of Longbush's development before wandering round the reserve which is only 10 minutes drive from the city centre. This reserve offers typical bush cover from pre European era with the ever present fantail and kereru. Another key activity for this visit was exploring the inspirational 1769 garden with landscaper Philip Smith, alongside the educational opportunities offered at the Welcome Centre.

April 2017 – Boundary Stream Mainland Island

East Coast Hawks Bay Conservation Board
Annual Report 2016-2017 – DOC-3194243

Native flora and fauna thrive on this “mainland island”, where pests and predators are kept at low levels, allowing populations of birds to re-establish. The highlight of the visit hosted by DOC ranger Mark Melville was viewing mottled petrels in their nesting area just prior to fledging. Translocation of these seabirds from Whenua Hou (Codfish Island) and Cooks Petrels from Little Barrier Island to what is one of the furthest inland seabird locations is in its fifth year. The petrel nesting boxes are within a predator proof fence, where they are fed for a few weeks by a team of volunteers lead by Cathy Mitchell. A short walk from the main entrance is the “Mighty Matai” one of the Napier areas Kiwi guardian sites. It is still standing because it was too large to mill. The 800-year-old tree is part of an activity programme for kids to learn about nature, while earning cool rewards. The Board was able to experience the benefits of intensive management of this area by DOC as part of the partnership with Poutiri ao ō Tāne.

5.6 Special Events

November 2016: Gisborne Board members joined Doc’s director Lou Sanson and Associate Minister Nicky Wagner in presenting the 2016 local DOC Community Fund recipients.

January 2017: Official welcome for Connie Norgate as DOC’s Hawke’s Bay Operations Manager, exchanging roles from the Chatham Islands with Dave Carlton.

Also a vesting/gift back Powhiri and document signing ceremonies and fieldtrips held in partnership with Maungaharuru Tangitu as part of their Treaty settlement. The Boundary Stream reserve was returned to the ownership of the Maungahururu Tangitu Hapu with the subsequent gifting back to the people of Aotearoa

February 2017, East Coast Hawke’s Bay Conservation Board’s meeting in Gisborne was a joint session with the Chatham Island’s Conservation Board. All Board members gained valuable knowledge exchanging ideas, experience and future plans during the two days. It was the first trip to Gisborne/Tairawhiti for most of the Chatham Islanders and they were overwhelmed driving through bush clad hillsides. Their home is a highly modified landscape with less than 5% vegetated. The Chatham Island’s Conservation Board’s prime concern is the revitalisation of their bird population (they have 23% of NZ’s endemic species), so their experience along our East Coast will assist their plans of bush regeneration at home to encourage bird life back in sufficient numbers for their hapu to be able to return to harvesting sufficiently to accommodate traditional gathering.

April 2017: The Board joined department staff celebrating 30 years of DOC in both Gisborne and Napier.



Photo: The Board at the Boundary Stream entrance

April 2017

6.0 Significant advocacy and statutory work undertaken by the Board

6.1 Statutory Processes

The Board received DOC's recommendations including their ranking priority for East Coast and Hawke's Bay Stewardship Land for a change of status. The Board's role was to give a community perspective to this choice by choosing its own top five areas for reclassifying. This was done in June 2016.

The Board received updates on activities and issues with each of the Fish and Game Councils at each meeting from the allocated liaison members. The CEO of Eastern Fish & Game has been helpful assisting both regions over the past 18 months with good liaison.

The Board has a representative member on the Te Tapuwae o Rongokako Marine Reserve committee.

6.2 Strategic Planning

Board members attended various workshops and planning forum and reported back at the meetings. The focus for this year has been on progressing the East Coast Hawke's Bay Conservation Management Strategy which has reached a stage requiring other organisations' input before the document can move forward towards public notification.

6.3 Advocacy

The Board recognises and appreciates volunteers and thanks them for their huge amounts of conservation work within the community. These discussions are of great importance to the board in terms of the matrix of the public-private responsibilities of conservation.

Board members attended many community events and hui, including the inaugural meeting of Hawke's Bay Botanical Group, the Hawke's Bay Environmental Education Forum meeting and Poutiri Ao o Tane Community Advisory Group, the East Coast Ballance Farm Environment Awards and the public field day of Wharekopae Catchment Group.

The board wrote submissions during the 2016/17 year including the following:

- Gisborne District Council Draft Regional Pest Management Plan.
- Support the Kiwi Recovery Plan with some recommendations.

6.4 Liaison Work

The Board liaises with Community Fund projects that have a focus on supporting native bird species through habitat protection and regeneration, and breeding programmes.

Rauru Kirikiri is the NZCA member liaison with the Board. Rauru attended two Board meetings during the year, at which time he updated the Board on the activities of the NZCA.

The Board receives the agenda, papers and minutes of the NZCA meetings. The NZCA also communicates on a regular basis with the Board's Chairperson.

7.0 Community involvement in Board Meetings

The Board believes that working with conservation organisations and members of the public is very important. During 2016/17 the Board welcomed individuals to a Public Forum, a half an hour session scheduled at each meeting, to enable people to speak to the Board about agenda items or other conservation issues. The Board regards the Forum as an important opportunity to hear from the community and hopes to see more people take up this prospect in 2017/18.

Matters raised by speakers who participated in these Fora included the following:

- the importance of protecting the whole of braided river systems for this region
- the board's continual support for the importance of the Ahuriri Estuary and the concerns for the ecology and sustainability of the estuary environment as presented by the Ahuriri Protection Society;
- an update on QEII National Trust's regional activities;
- the striving of the Central North Island Sika Foundation to create a Herd of Special Interest somewhere on conservation land in the Kaweka/Kaimanawa area;
- the importance of successful partnerships with DOC such as are demonstrated with the pest management work at Gray's Bush;
- the submitters of a water conservation order (WCO) for the Ngaruroro and Clive Rivers in Hawke's Bay explained their application process. They requested board support for their submission as the Minister for the Environment has referred it to a special tribunal.

7.1 Community visibility

The Board maintains a presence on the Department's website. Local newspapers published a media release on the Board's activities with a photo following each meeting. Various Board members join local community planting days across the region, alongside DOC staff.

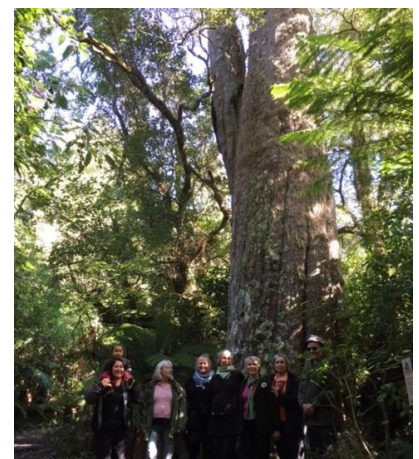
The Board receives regular updates from local Kaitakawaenga for Te Tairāwhiti's Nga Whenua Rahui.

7.2 Working with the Department of Conservation

Department of Conservation staff attend each Board meeting as required to provide information. The presence of these staff members at meetings has facilitated open dialogue and good working relationships between the Board members and the Department.

Board members regularly communicate with DOC staff between meetings, and participate in DOC events.

Photo: Board members at "Mighty Matai", Kiwi Guardian at Boundary Stream Inland Island, April 2017



7.3 Taking account of Ministerial priorities for the Department

The Board supports existing DOC Community Fund (CF) (previously known as Community Conservation Partnership Funded (CCPF)) projects that are focused on War on Weeds, Battle for our Birds, pest control and biodiversity in particular. Board members liaise with these groups.

Through the field trips, the Board saw first hand specific Battle for our Birds sites, including the work by Eco Works during our July site visit to Motu, the visit to Longbush Ecosanctuary and to Boundary Stream Mainland Island. Alongside these specific projects is the work carried out by the Department, spreading the partnership role and responsibilities. Over three weeks in December, one Board member assisted at Longbush Eco Sanctuary in feeding Oi chicks that had been relocated to this inland breeding site in preparation for re-establishing a colony..

7.4 Engaging with the community, including raising the profile of the Board

The Board:

- liaised with community fund recipients
- attended and participated in a number of community conservation events
- liaised with local authorities
- participated in the Te Tapuwae o Rongokako Marine Reserve Committee
- received presentations from members of conservation groups.
- Prepared press releases for local newspapers and the Conservation Boards' newsletter

8.0 Acknowledgements

The Board thanks the Department's District Operations Managers John Lucas (Gisborne) and Connie Norgate (Napier) for providing the Conservation Board with quality reports that kept the Board aware of progress across the region and organising field trips to sites of importance in our region. We also thank the Lower North Island Regional Statutory Manager (Sarah Owen and more recently Chris Visser) for keeping the Board informed with regular updates on events, submissions and organising Board meetings, and the Regional Director Operations Reg Kemper for his attendance and attention to our meetings.

Appendix 1 – Conservation Act / Board Functioning

Board Functions Under Section 6m of the Conservation Act 1987

The functions of each Board shall be—

- 1) to recommend the approval by the Conservation Authority of conservation management strategies, and the review and amendment of such strategies, under the relevant enactments;
- 2) to approve conservation management plans, and the review and amendment of such plans, under the relevant enactments;
- 3) to advise the Conservation Authority and the Director-General on the implementation of conservation management strategies and conservation management plans for areas within the jurisdiction of the Board;
- 4) to advise the Conservation Authority or the Director-General—
- 5) on any proposed change of status or classification of any area of national or international importance; and
- 6) on any other conservation matter relating to any area within the jurisdiction of the Board;
- 7) to liaise with any Fish and Game Council on matters within the jurisdiction of the Board;
- 8) to exercise such powers and functions as may be delegated to it by the Minister under this Act or any other Act.

Powers of the Board under Section 6n of the Conservation Act 1987

- 1) Every Board shall have such other functions as are conferred on it by or under this Act or any other Act.
- 2) Without limiting the generality of subsection (1), each Board may –
 - a) Advocate its interests at any public forum or in any statutory planning process; and
 - b) Appoint committees of members and other suitable persons, and delegate to them functions and powers.
- 3) The power conferred by subsection (2)(a) shall include the right to appear before courts and tribunals in New Zealand and be heard on matters affecting or relating to the Board's functions.

Appendix II –Annual Work Plan

Work Programme Overview

The East Coast Hawke’s Bay Conservation Board work programme was developed in response to the Letter of Expectation from the Associate Minister of Conservation dated 19 July 2016. The Board recognises that its focus is on policy issues, strategic direction and planning and not on the operational details of the Department of Conservation.

The work programme is structured in three parts, covering the following expectations:

Part A:

- Review/development/monitoring of statutory management plans including Conservation Management Strategies (CMS)
- Advice relating to stewardship land;
- Other statutory functions for the Board;
- Advocacy; and

Part B:

- working with the Department;
- taking account of the Ministerial priorities for the Department as contained in the Department’s 4 Year Plan;
- working with adjoining Boards and the NZCA;
- understanding the Board’s contribution to giving effect to the principles of the Treaty of Waitangi;
- general engagement with the community, including raising the profile of the Board within our region; and

Part C:

- risks/ issues from the Board’s perspective, and opportunities for conservation growth that are not covered above, emphasising our role in achieving enhanced conservation outcomes for the benefit of our community, with a long term goal to get youth more actively involved in conservation with new and innovative ways to connect with them.

Part D:

Obligatory and Reporting



Photo: Boundary Stream.

PART A: REGIONAL WORK PROGRAMME

1 Review / development of statutory management plans including Conservation Management Strategies (CMS)

- 1.1 **Board Objective:** *Review and Develop an East Coast Hawke's Bay and Ngati Porou Nga Whakahaere Takirua Conservation Management Strategy (CMS) draft for NZCA's approval in the 2017/18 year.*

Planned Board Activities

- a) CMS sub-group to consult with all ECHB members on progress of the draft CMS.
- b) Receive and consider the draft CMS, in conjunction with the Department.
- c) ECHB members participate in relevant Hui when draft CMS publically notified
- d) Ensure engagement of key stakeholders at critical stages of CMS consultation
- e) Proceed as far as possible to public notification of the Draft CMS

Measured Progress: All activities completed, although Milestones confirmed first week in July 2017

- 1.2 **Board Objective:** *Determine priorities for implementation of the draft ECHB Conservation Management Strategy, in conjunction with the Department.*

Planned Board Activities continued

- a) Identify key accepted priorities emerging from the CMS draft development process and provide guidance as required for the Department on incorporating these into business planning for the 2017/18 year.
- b) Monitor actions taken to implement these priorities through the Department regular reports to the Board.

Measured Progress: All activities completed.

2 Stewardship Land

- 2.1 **Board Objective:** *Provide Minister and Department with advice on reclassification of stewardship areas that require increased protection because of their significant conservation values or need divesting.*

Planned Board Activities

- a) Receive advice from the Department on the need for any re-classification of stewardship lands, including a summary of any requests for re-classification received from the public. This will be a standing agenda item.
- b) As required, review descriptions of stewardship land to understand their conservation value and, in particular, those lands with 'significant conservation values' for reclassification within the CMS.
- c) Consider any request from the Department to be divested of any stewardship land with qualifying explanations of costs/benefits for the Department.

Measured Progress: All activities completed.

3 Other statutory functions¹

- 3.1 **Board Objective:** *Nurture working relationships with Fish and Game Councils regarding issues of mutual interest within the ECHB.*

Planned Board Activities

- a) Continue to have at least one representative liaise with the Fish and Game councils in the ECHB area, and receive minutes of their meetings.
b) On occasion, invite the Senior Fish and Game representative for the ECHB region (or NZ) to present at a Board Meeting.

Measured Progress: All activities completed

- 3.2 **Board Objective:** *Provide advice to the Department on the Te Tapuwae o Rongokako Marine Reserve.*

Planned Board Activities

- a) Appoint a member to serve on the Te Tapuwae o Rongokako Marine Reserve committee and provide liaison reports to the ECHB on its activities, risks and opportunities.
b) Members will actively engage with Department staff managing the Marine Reserve and receive regular reports on its development so as to deepen members' appreciation of its values and threats.

- 3.3 **Measured Progress:** All activities completed

Board Objective: *Provide advice on proposed changes of status for nationally and internationally important areas, when sought by the Department.*

Planned Board Activities

- a) Consider and provide advice to the Department on proposed changes of status for national or internationally important areas.
b) Continue to support the community to engage with the Department on
i. areas of potential international and national interest, such as the Ahuriri Estuary as a potential Ramsar site; and
ii. To progress both the Cook Landing Site National Historic Reserve and Cook's Cove to become two of the department's Historic Icon sites before 2019.

Measured Progress: Ahuriri needs the management plan to be updated with a focus on required criteria, Will be a long term project.

Progress happening nationally with the Landing Sites with expectation that at least the National Historic Site will officially be a national iconic site.

¹ This section should include Board functions relating to statutory functions under section 6M of the Conservation Act

4 Advocacy

- 4.1 **Board Objective:** *Pursue all reasonable opportunities to advocate at hui and community forums and in any statutory planning processes relevant to conservation*

Planned Board Activities

- a) Board members will be alert and responsive to opportunities to attend and advocate at appropriate hui and community forums, with the approval of the Chair.
b) Board members will engage in statutory planning processes and use these as opportunities to advocate for the Board's priorities.

Measured Progress: Board members attended as many conservation forums as possible with other work commitments.

PART B: GENERAL EXPECTATIONS

5 Working with the Department

Board Objective: Board members will maintain good working relationships and open dialogue with Directors, Managers and Board Support Officers in order to engage strategically in conservation for the region

Planned Board activities

- a) Board members will engage constructively with DOC staff when opportunities arise, including by attending events at DOC offices and training opportunities, and by calling-in to DOC offices when they have the opportunity.
b) Board members will allow their professional profile to be on Conservation Board communications media, including the website and any relevant brochures, in order to increase the profile of the Board Members among DOC staff, and within the community.
c) Board members will ensure that the provision of advice is focused at the governance level, and not at an operational or management level.

Measured Progress: Board members have great working relationships with all DOC staff

6 Taking account of Ministerial priorities for the Department

- 6.1 **Board Objective:** *Identify opportunities for building relationships to support Healthy Parks/Healthy People program.*

Planned Board Activities

- a) Give particular regard to the Ministerial focus Healthy Parks/Healthy People in its' engagement in the community and prioritisation of events and advocacy. Possible events include Environment hui having more youth focus.
- b) Support DOC developing more Health and Heritage messaging through Kiwi Guardians' programme, and;
- c) Undertake communication and educational activities to support the profile of the War on Weeds programme, in particular, wilding pines (with *contorta* in areas like the Kaweka's and *radiata* in other areas on the East Coast)

Measured Progress: Board committed to working with youth as much as possible and keeping updated by Nga Whenua Rahui and local DOC initiatives to join where possible. Haven't had opportunities to be more active with the wilding pine communication activities.

- 6.2 **Board Objective:** *Identify opportunities to support North Island community conservation targeting kiwis.*

Planned Board Activities

- a) Provide advice and community feedback to the Department on pest control activities, community concerns and where effective messaging of programme effectiveness can be improved.
- b) Support existing DOC Community Funded (CF) projects focused on pest eradication and encourage the design and development of future projects supporting Kiwis from the Department and community

Measured Progress: Board liaises with several kiwi focused Community Fund projects

7 Working with adjoining Boards and the NZCA

Board Objective: Board members will liaise with neighbouring Conservation Boards in order to progress cross boundary CMS issues and other matters of mutual interest

Planned Board Activities

- a) Continue to have nominated Board members to be liaison points with all neighbouring Boards.
- b) Ensure advance notice and any relevant materials are given to liaison nominees from neighbouring Boards, in order to support timely and meaningful engagement.
- c) Consider neighbouring Board views on relevant issues, challenges and opportunities.

Measured Progress: All activities maintained and ongoing

8 Understanding the Board’s contribution to giving effect to the principles of the Treaty of Waitangi

Board Objective: *The Board will develop knowledge and support of the Board’s and Department’s obligations under Treaty settlements as well as principles under section 4 of the Conservation Act*

Planned Board Activities

- a) Request and receive progress reports on the implementation of the Department’s obligations under Treaty Settlements. These reports are to be a specific section in the regular reports from the Department for the Board.
- b) Have particular regard to Treaty Settlement and section 4 obligations in the review of the Conservation Management Strategy.

Measured Progress: Board members received these reports and where possible engaged in higher level discussion, especially with the Treaty Implementation Rangers.

9 Engaging with the community, including raising the profile of the Board

- 9.1 Board Objective: Board members will liaise regularly with other conservation entities, such as district and regional councils, NGOs and community groups, in order to enhance the work of the Board and pursue good working relationships on issues of mutual interest and concern

Planned Board Activities	
	<ul style="list-style-type: none"> a) Develop relationships with conservation management entities such as the QEII Trust and Nga Whenua Rahui and invite them to Board meetings to acknowledge significant achievements and ways to work together on conservation goals. b) Allocate specific members to be the Board’s lead representative in engaging with groups across the rohe/area, including those leading Community Funded (CF) projects. Liaison representative will provide a verbal update at each meeting of the Board. c) Maintain relationships with Councillors across the rohe and report relevant matters to Board meetings, as required. d) Members will seek out opportunities in their own communities of practice to connect with the community, especially those that target the youth and gauge reaction to conservation initiatives planned or implemented by DOC. e) Explore new ways to effectively engage with the community and to improve existing mechanisms. <p>Measured Progress: All members engaging in their own communities and investigating new ways that are yet to be implemented.</p>
9.2	Board members take initiative to meet with community groups and general public to gauge community reaction to conservation initiatives planned or implemented by DOC.

	Planned Board Activities		
	<p>a) Identify Key Community Groups and liaise regularly and report on their matters of import to conservation.</p> <p>b) Engage with youth groups who are involved in conservation.</p>		
	Measured Progress: All members are attempting to progress but due to focus on CMS across year the board has yet to have a regular youth report.		
PART C: RISKS AND OPPORTUNITIES			
10	Risks from the Board's perspective		
	<p>a) <u>Inability to maintain the momentum in the CMS.</u> Now the CMS review is progressing the Board needs to keep the process flowing and ensure the Board is at the front of it. Having an up to date relevant CMS is critical to the Department understanding community priorities and the Board being able to monitor and support the Department in achieving objectives relating to these.</p> <p>b) <u>Proposed Risk Mitigation</u> – The Board ensure it maintains pressure on the Department to progress the CMS review and meet milestones. Board sub-committee regularly report to the Board on progress and any issues around potential delays.</p> <p><u>Implementation of Treaty Settlement and section 4 obligations.</u> Continual improvement is sought in the meeting of Department obligations to whanau, hapu and iwi through the CMS. Increased resourcing and/or prioritisation could support this.</p> <p>Proposed Risk Mitigation – The Board will openly engage with the Department to explore options to improve meeting its obligations, including increased resourcing and/or prioritisation. The Board will work with the Department to engage community in support of section 4 obligations.</p> <p><u>Past years' restructuring, staff changes and lack of resourcing</u> could impede Board support and administration, delay advice being considered and implemented and result in Board requests and information provision being delayed.</p> <p>Proposed Risk Mitigation – The Board will urge the Department to ensure adequate Board administrative procedures documented and ensure Board requests and documentation provisions are dealt with as soon as practicable. Also request Department address resourcing issues as soon as possible once they are identified.</p> <p><u>Board not having enough visibility and opportunity to add sufficient value.</u> In order to effectively fulfil its statutory obligations, the Board needs to be visible to the community, widely communicate its purpose, activities and achievement and encourage the community to use it as a voice for conservation to the department. Failure to do this adequately will reduce its value.</p> <p>Proposed Risk Mitigation – Fulfil tasks identified in this work programme.</p>		

11 Opportunities for conservation growth

- a) Increased alignment between work of the Department and partners (including conservation groups, conservation agencies, Councils, farmers, and organisations such as OSPRI).
- b) Improved water management through initiatives to realise the Land and Water Management Strategy and the National Policy Statement for freshwater management.
- c) Working more closely with whanau, hapu and iwi, especially alongside the **Healthy Nature/Healthy People** initiative.
- d) Further development and enhancement of urban conservation through community partnerships on pest management and biodiversity strategy.
- e) Securing and developing business partnerships with East Coast Hawke's Bay businesses and land owners.
- f) Support Department progress on preserving and improving the quality and preservation of freshwater and marine environment, particularly given the substantial farming and forestry activity in our region and the damaging effects that flow from those activities. Focus on Department's 4 year plan Regional freshwater ecosystems restored from 'mountains to the sea' and Marine protected areas.
- g) Ensure Cook Landing Site is one of the Department's Historic Icon Sites selected prior to 2019 for developing and telling story AND implementation of long-term upgrade. Also ensure both districts included in nationally 50 local treasure natural heritage partnerships



Photo: East Coast Hawke's Bay and Chatham Islands Conservation Boards at Longbush Reserve standing on bridge constructed by EIT carpentry students and sponsored by Williams Trusts and ECT

From left to right: , Lucy Meagher (East Coast Hawke's Bay Conservation Board), Judy Kamo (Chatham Islands Conservation Board), Pauline Mackay (CICB), Di Gregory-Hunt (CICB), Amanda Seymour (CICB), Chris Visser (DOC), Jeremy Salmond (Longbush Trustee), Jenny Rowan (Wellington Conservation Board Chair), Marijke Warmenhoven (ECHBCB), Vicki Thorpe (ECHBCB), Jo Blakeley (ECHBCB), Penny Shaw (ECHBCB Chair), Connie Norgate (DOC), and Charles Barrie (EC DOC).