

# East Coast Hawke's Bay Te Tairāwhiti ki Te Matau-a-Māui Conservation Board

*ANNUAL REPORT*

*1 JULY 2015 – 30 JUNE 2016*



*Presented to the New Zealand Conservation Authority  
Pursuant to Section 6 (O) of the Conservation Act 1987*

*Serviced by the Department of Conservation  
Palmerston North Office*

*P O Box 11010  
PALMERSTON NORTH 4442*

*Front Cover:*

*Photo 1*                      *Board visit to Pukeamaru and East Island, October 2015*  
*Taken by Trudi Ngawhare*

*Photo 2*                      *Typical East Coast beach 2015*  
*Taken by Trudi Ngawhare*

*Copyright:*                *ISSN (print) 2463-3089*  
*ISSN (digital) 2463-3097*

## CONTENTS

1.0 Introduction

2.0 Chairperson's Report

3.0 Membership of the Board

4.0 Area of the Board

4.1 Coverage

4.2 Significant areas of natural and historic importance

5.0 Activities of the Board

5.1 Board meetings and field visits

5.2 Board sub-committees and liaison

5.3 Public forums

5.4 Concessions

6.0 Board's performance in relation to the Work Plan

# 1.0 Introduction

This is the second annual report of the East Coast Hawke's Bay (ECHB) Te Tairāwhiti ki Te Matau-a-Māui Conservation Board (the Board) which was re-established in March 2014. The Board is one of 15 Conservation Boards appointed by the Minister of Conservation under Section P of the Conservation Act 1987. The functions and powers of the Board are outlined in Sections 6M and 6N respectively. Each of the 15 Conservation Boards has their own geographically defined area with up to 12 members.

The Board's work programme is set in response to the 'Letter of Expectation' from the Associate Minister of Conservation dated 31 August 2015.

# 2.0 Chairperson's Report

After the consideration given by not only retiring Board members but also by the Minister, our first year Board members all remained on for at least another 12 months. This provided the continuity that was appreciated by me as Chair and by the rest of the Board. As we were in the middle of our slightly long-winded Conservation Management Strategy (CMS) development, the ability of the Board personnel to be fully aware of where we were, at any given time was important.

I would like to personally thank all the Board individually for their special contributions to our largely harmonious and very effective operation over the last 12 months. I look forward to working with all those members who made it back for another 12 months. Jo Blakeley, Jenny Mauger, Penny Shaw and Vicki Thorpe were all very involved and influential and it is reassuring to have them with us again.

I would like to say a very special thanks to departing members Murray Henare and Kevin Trerise. I have relied on both of them to an extraordinary level. Murray as our Kaumatua and man of knowledge when it came to the top end of our region and Kevin as an ex-Chairperson and equally knowledgeable on all things "Conservation Board" and Hawke's Bay. You will both be missed and I hope we can have the pleasure of your company again through our conservation projects.

As our CMS progressed it became obvious to most that maybe it was an opportunity to refine some of the style and feel of this very important document. We felt that the ability to quickly refer to the CMS as a whole and more importantly, any particular parts that might be topical in a meeting, was very restricted. As per chance others had felt the same and at the Gisborne meeting of the New Zealand Conservation Authority in October 2015, after a case put forward by the ECHB Conservation Board members present, the Director General, Lou Sanson, gave an undertaking to progress the idea further with the Department of Conservation (the Department) (alternatively, DOC) and come back to us with what he had heard and a plan to give it some wings. Hence the Prototype CMS is being developed and then rolled out to this Board and to the Wellington Board. We have been regularly brought up-to-date with its progress and how pleased people seem to be with its design.

During the year we endeavoured to stick to our plan of taking our meetings to as much of our region as practically possible. This we achieved by meeting in Wairoa to also see Mahia, Te Araroa to see Pukeamaru and East Island, Taradale where we listened to our first school presentation, Napier where we visited the Kawekas and now Motu, to see as much as we can fit in. In each of these locations we had terrific backup from Department Staff and got to appreciate many issues first-hand.

As mentioned, we have instigated a policy of asking a local Primary/Intermediate school to come and participate in our meeting as a way of communicating with those who may carry the torch and for the Board to see a little into the future. It is reassuring to hear just how committed young people can be.

Of all the issues we face in conservation there are probably two that are, to my mind at least, the most challenging going forward. We are all in the middle of strategising plans for water, both marine and fresh. As everyone knows the need for water in both rural and urban life is going to be as powerful as the once need for oil was. We are very supportive of any moves to conserve and use water well and preserve natural water where at all possible. The other issue is the seemingly near impossible task of overcoming the evils of “wilding pines”. After my own agricultural experiences with *radiata* wildings, then seeing first hand what’s happening in the Kaweka Ranges with *contorta* and hearing about the myriad of other sites in the country, it seems to be the more money and science we can get into this the better. It will not be rewarding to have the efforts around Nature Heritage being then swallowed up by this largely introduced storm, burying our precious native flora.

Our performance as a Board is substantially enhanced by the inordinate amount of support we get from the Department staff. Both John Lucas and Dave Carlton have been right there when we need information on the areas and issues at hand. Sarah Owen as Statutory Manager and Meg Dewhurst are both starting to break records when it comes to supplying information, as Board support officers. Also thanks from the Board to the others that have come and gone like flowers in spring in this ever-changing world of re-organisation.

In closing I would like to welcome new Board members, Ms Marijke Warmenhoven from Ruatoria and Dr Lucy Meagher from Havelock North. I hope they are going get as much pleasure and satisfaction from their participation on the East Coast Hawke’s Bay Conservation Board as I have. We all look forward to meeting them at our first meeting in Gisborne/Motu in July.



John Wauchop  
Chairperson  
East Coast Hawke’s Bay Te Tairāwhiti ki Te Matau-a-Māui Conservation Board

### 3.0 Membership of the Board

Members are appointed to the East Coast Hawke’s Bay Te Tairāwhiti ki Te Matau-a-Māui Conservation Board by the Minister of Conservation, and are representative across the different communities and interests within the region.

During 1 July 2015 to 30 June 2016 there have been seven members on the Board.

The following table summarises the Board membership during the 2015/16 year:

Name	Area	Date first appointed	Term ends
John Wauchop (Chairperson)	Gisborne	1 July 2014	30 June 2017
Joanne Blakeley	Napier	1 July 2014	30 June 2018
Murray Henare	Te Āraroa	1 July 2014	30 June 2016
Jenny Mauger	Napier	1 July 2014	30 June 2017
Penny Shaw	Gisborne	1 July 2014	30 June 2019
Vicki Thorpe	Gisborne	1 July 2014	30 June 2018
Kevin Trerise (Deputy Chairperson)	Havelock North	1 July 2014	30 June 2016

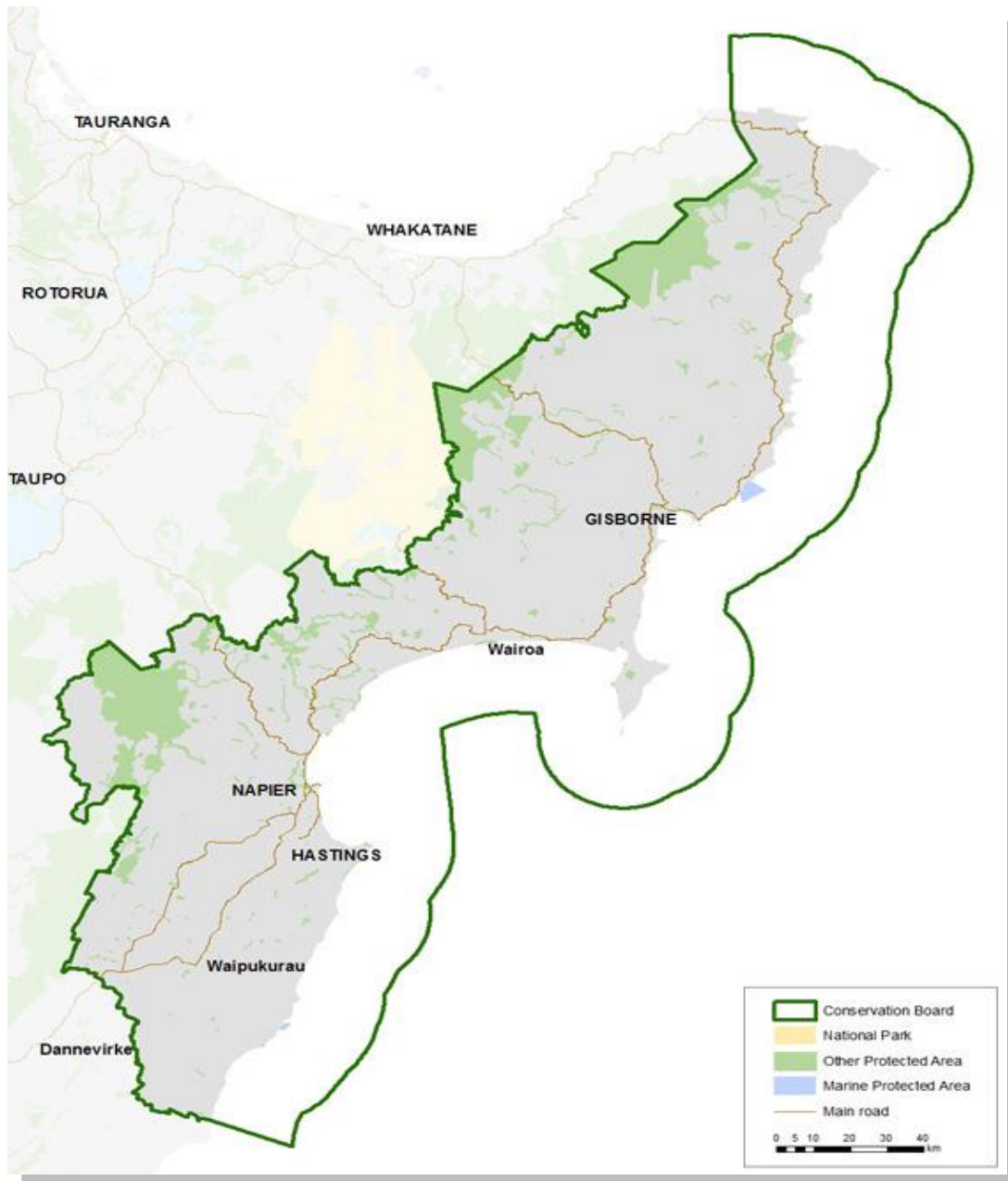


*Photo: Board members Jo, Jenny and Kevin visit to Ahuriri Estuary, Napier with Associate Minister Hon Nicky Wagner (second from right)*

## 4.0 Area of the Board

### 4.1 Coverage

The East Coast Hawke's Bay Te Tairāwhiti ki Te Matau-a-Māui Conservation Board's coverage extends from Te Araroa (north of Gisborne) to Mangaorapa (Central Hawke's Bay) on the East Coast of the North Island.



Map of East Coast Hawke's Bay Te Tairāwhiti ki Te Matau-a-Māui Conservation Board area

## 4.2 Significant areas of natural and historic importance

### HAWKE'S BAY

#### Boundary Stream Mainland Island

Boundary Stream Mainland Island is home to a number of threatened species including North Island brown kiwi, kākā, kōkako, New Zealand falcon (kārearea) and kererū.

#### Cape Kidnappers Gannet Reserve

The reserve is managed by Department of Conservation to protect gannet nesting sites, the 13 ha reserve includes the Saddle and Black Reef Gannet colonies.

#### Kaweka Forest Park

The Forest Park is characterised by alpine shrublands, tussock valleys and beech forests with pockets of podocarp.

Many native birds can be found in the area including the North Island brown kiwi, New Zealand falcon (kārearea), North Island kākā, and the blue duck (whio). Ten native freshwater fish species have been recorded in the Mōhaka River.



#### Ōtātara Pā Historic Reserve

One of the largest and most ancient Māori pa sites in the Hawke's Bay. It is significant for the immense size and large number of terraced dwelling sites and food pits. Remnant earthworks of many of these are still evident today.

#### Te Angiangi Marine Reserve

On the central Hawke's Bay coast approximately 30 km east of Waipukurau and Waipawa, Te Angiangi Marine Reserve protects a piece of coastline of approximately 446 ha.

The reserve is special in that it contains several marine habitat types, including boulder bank area, rocky intertidal platforms and a sheltered bay that is perfect for snorkelling.



## **EAST COAST**

### **Cook Landing Site National Historic Reserve**

On Kaiti Beach in Gisborne, this reserve commemorates the first landing place of James Cook in New Zealand in 1769. The site is believed to be within a short distance of the actual landing site, and not far from Te Toka a Taiau where the first significant meeting between Māori and European took place.

### **Raukumara Forest Park**

The Raukumara Forest Park is one of the least developed or visited tracts of bush in the North Island. Recreation opportunities include climbing Mount Hikurangi, rafting the Motu River and mountain biking Otipi Road.

### **Cooks Cove Walkway**

The walkway was named after the Cove and the English sailor and explorer, Captain James Cook. He visited the area in 1769 as part of his circumnavigation of New Zealand.

Cooks Cove Walkway is situated at the southern end of Tolaga Bay, 52 km north of Gisborne.

The National Historic Reserve commemorates the first landing place of James Cook in New Zealand in 1769. The site is believed to be within a short distance of the actual landing site, and not far from Te Toka a Taiau where the first significant meeting between Māori and European took place.



### **Gray's Bush Scenic Reserve**

Gray's Bush Scenic Reserve is a small but highly significant remnant of the tall, kahikatea (podocarp) forest which once covered much of the Gisborne Plains. Forested areas are rare on the plains which have been extensively cleared and drained for pastoral farming and agriculture.

It is semi-coastal in character and has a dominant canopy of kahikatea, with significant presence of puriri. It also provides a nesting, resting and feeding habitat for a number of different bird species both native and introduced.

### **Te Tapuwae o Rongokako Marine Reserve (North of Gisborne)**

Protects approximately 2,450 ha of coastline and contains eight marine habitat types that are representative of the area, including inshore reef, rocky intertidal platforms and sediment flats.

Kelp forests, marine snails, kina, sponges, seaweed and a diverse range of fish can be found in the reserve.

## 5.0 Activities of the Board

### 5.1 Board meetings and field visits

The Board varies the location of its meetings to ensure that it meets across the conservancy. This enables the Board to view the issues that are arising in the conservancy and to hear from the public and be accessible to them.

During the 2015/16 year, the Board's formal programme comprised four meetings and three field trips. Meetings of the Board were held in Wairoa, Te Araroa, Taradale and Napier.

Visits to specific locations provided opportunities for the Board to:

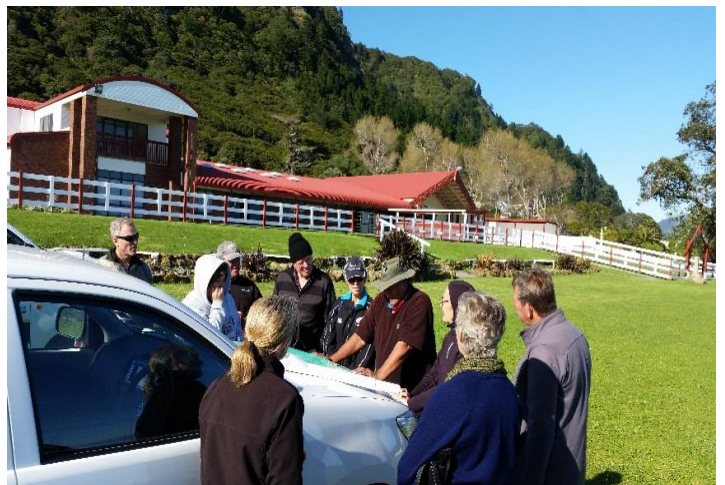
- become more familiar with the conservation values of key places
- discuss management challenges and approaches with DOC staff and stakeholders.

Field trips were held in 2015/16 to:

- 18 July 2015: Mahia
- 31 October 2015: Pukeamaru and East Cape
- 16 April 2016: Tarawera's, Mahia, Kaweka Forest Park.



*Photo: Mazus novae zeelandia (critically endangered wetland species) being re-established near Te Araroa*



*Photo: Briefing time, Pukeamaru and East Coast visit, October 2015*

## 5.2 Board sub-committees and liaison

The Board formed the following sub-committees for 2015/16:

### **Conservation Management Strategy**

John Wauchop (Chairperson); Murray Henare; Jo Blakeley; Jenny Mauger

### **Triggered Concessions (concessions that meet the requirements for triggering them for Board attention)**

Penny Shaw (Chairperson); Kevin Trerise; Jenny Mauger

## **Liaison roles**

The following liaison roles were agreed for 2015/16:

### Fish and Game Council

Hawke's Bay	Kevin Trerise
Gisborne	John Wauchop

### Other Conservation Boards

Bay of Plenty	Murray Henare
Tongariro-Taupo	Murray Henare
Wellington	Kevin Trerise

### Territorial Authorities

Gisborne	John Wauchop
Hawke's Bay	Jo Blakeley

### Treaty Partners

Gisborne	Murray Henare
Hawke's Bay	Jenny Mauger

### Community Fund Project

Ngāti Pāhauwera	Kevin Trerise
Whangawehi Catchment Management Group	John Wauchop
Whinray Ecological Charitable Trust	Penny Shaw
Tairāwhiti Environment Centre	Vicki Thorpe
Longbush Ecological Trust	Penny Shaw
Ngāi Tāmanuhiri	Vicki Thorpe
Ngatapu Station	John Wauchop
Forest Life Force Restoration Trust	John Wauchop
Lake Whatumā Wetland Care Group	Jenny Mauger
Friend of A'Deane's Bush	Jo Blakeley
Havelock North Intermediate School	Jo Blakeley
LR & VS Cave (Whareponga Wetland Restoration)	Jenny Mauger
Tutira Partnership	John Wauchop
Cape Sanctuary	Kevin Trerise



*Photo: Conservation Board learning about Cook Landing Site National Historic Reserve from Jamie Quirk*

### 5.3 Public forums

During 2015/16 the Board welcomed individuals to a Public Forum, a half an hour session scheduled at each meeting, to enable people to speak to the Board about agenda items or other conservation issues. The Board regards the Forum as an important opportunity to hear from the community and hopes to see more people take up this prospect in 2016/17.

Matters raised by speakers who participated in these Fora included the following:

- effects of development and city growth on the Ahuriri Estuary and Pandora Pond
- absence of DOC in public forum, biodiversity loss and freshwater status
- waterways monitoring, sustainable land management, restoration of wetlands, concern re ceased pest control programmes and decline of Dotterel species, jobs for locals, involving young people in conservation, providing training and education through the Matahi Marae, limits for whitebaiting
- encouraging recycling
- Trees that Count project.

### 5.4 Concessions

The Board's Triggered Concessions subcommittee received notification of concession applications that meet the criteria for triggering them for Board attention, made recommendations to DOC and reported back to the Board at Board meetings

## 6.0 Board Performance in relation to the Work Plan

The Board Objectives contained within the work programme are:

- **Conservation Management Strategy and Plans**

*Review/development of statutory management plans including Conservation Management Strategies (CMS): Review and Develop an East Coast Hawke's Bay Conservation Management Strategy (CMS) draft for NZCA's approval in the 2016/17 year; and determine priorities for implementation of the draft ECHB Conservation Management Strategy, in conjunction with the Department.*

The CMS Committee of the Board met with DOC planners to draft a vision for the CMS and develop the 'Places' described in the document. The vision statement has been finalised.

- **Stewardship Land**

*Provide the Minister and Department with advice on priorities for reclassification of stewardship areas that require increased protection because of their significant conservation values.*

The Board received DOC's recommendations including their ranking priority for East Coast and Hawke's Bay Stewardship Land for a change of status.

The Board's role was to give a community perspective to this choice by choosing its own top five areas for reclassifying. This was done in June 2016.

- **Other Statutory Functions**

*Nurture working relationships with Fish and Game Councils regarding issues of mutual interest within the region; provide advice to the Department on the Te Tapuwae o Rongokako Marine Reserve; and provide advice on proposed changes of status for nationally and internationally important areas, when sought by the Department.*

The Board allocated liaison roles with each of the Fish and Game Councils.

The Board has a representative member on the Te Tapuwae o Rongokako Marine Reserve committee.

The Board visited the site of the then proposed Ruataniwhā Land Exchange and provided their recommendations on the proposed land exchange.

The Board provided advice regarding the development of the Cook Landing site in Gisborne.

- **Advocacy**

*Pursue all reasonable opportunities to advocate at hui and community forums and in any statutory planning processes relevant to conservation.*

The Board submitted on the Ministry for the Environment's *A New Marine Protected Areas Act: Consultation Document*. The Board submitted on local government ten year plans.

Board members attended many community events and hui.

- **Working with the Department of Conservation**

*Maintain good working relationships and open dialogue with Directors, Managers and Board Support Officers in order to engage strategically in conservation for the region.*

Department of Conservation staff attend each Board meeting as required to provide information. The presence of these staff members at meetings has facilitated open dialogue and good working relationships between the Board members and the Department.

Board members regularly communicate with DOC staff between meetings, and participate in DOC events.



- **Taking account of Ministerial priorities for the Department**

*Identify opportunities to support the War on Weeds priority; and support the Battle for our Birds programme and the effective and efficient use of appropriate pest control measures.*

The Board supports existing DOC Community Fund (CF) (previously known as Community Conservation Partnership Funded (CCPF)) projects that are focused on weeds. Board members liaise with these groups.

The Board's field trip to the Kaweka Forest Park included visiting Comet Road to look at wilding pines, which are a major problem over much of New Zealand. The Board continues to discuss the issue with DOC, and strategies being used to tackle it.

The Board liaises with CF projects that have a focus on supporting native bird species through habitat protection and regeneration, and breeding programmes.



*Photo: Board members show Wilding Pine infestation near Comet (Kōmata) Hut, Kaweka Forest Park, April 2016.*

- **Working with adjoining Boards and the NZCA**

*Liaise with neighbouring Conservation Boards in order to progress cross boundary CMS issues and other matters of mutual interest.*

Rauru Kirikiri is the NZCA member liaison with the Board. Rauru attended two Board meetings during the year, at which time he updated the Board on the activities of the NZCA.

The Board receives the agenda, papers and minutes of the NZCA meetings. The NZCA also communicates regularly with the Board's Chairperson.

The Board allocates liaison roles with neighbouring Boards, and includes their minutes in the Board papers.

- **Understanding the Board’s contribution to giving effect to the principles of the Treaty of Waitangi**

*Develop knowledge and support of the Board’s and Department’s obligations under Treaty settlements as well as principles under section 4 of the Conservation Act*

The Board received a presentation from Ngā Whenua Rāhui to update on their activities and aspirations.

The Board received a presentation on the 2014 Māori Youth Programme.

DOC provide regular updates on the status and progress of Treaty of Waitangi settlements relating to the conservancy.

- **Engaging with the community, including raising the profile of the Board**

*Liaise regularly with other conservation entities, such as district and regional councils, NGOs and community groups, in order to enhance the work of the Board and pursue good working relationships on issues of mutual interest and concern.*

The Board:

- liaised with community fund recipients
- attended a number of community conservation events
- liaised with local authorities
- participated in the Te Tapuwae o Rongokako Marine Reserve Committee
- received presentations from members of conservation groups.