

---

# East Coast Hawke's Bay Te Tairāwhiti ki Te Matau-a-Māui Conservation Board

Annual Report  
1 July 2017 – 30 June 2018

---





*Presented to the New Zealand Conservation Authority  
pursuant to Section 6 (O) of the Conservation Act 1987*

Serviced by the Department of Conservation  
Te Papaioea/Palmerston North Office  
P O Box 11010  
Palmerston North 4442

Cover Photographs: Top Ōtātara Pa from Connie Norgate and Lower: Morere Scenic Reserve  
sourced from DOC website

ISSN 2463-3089 (print)  
ISSN 2463-3097 (digital)

## Contents

1.0	Introduction .....	1
2.0	Message from the Chair .....	2
3.0	Conservation Board Region .....	3
3.1	Coverage .....	3
3.2	Significant areas of natural and historic importance .....	4-5
4.0	Membership of the Board .....	6
4.1	Member Profiles .....	6-7
5.0	Board Activities.....	7
5.1	Board meetings .....	7
5.2	Board Member’s Attendance .....	8
5.3	Board sub-committees and liaison.....	8-9
5.4	Board Training .....	10
5.5	Field Trips .....	10-13
5.6	Special Events.....	14
6.0	Community and DOC involvement in Board Meetings .....	15
7.0	Liaison.....	15
8.0	Community .....	15
9.0	Acknowledgements .....	15
	Appendix 1 – Conservation Act / Board Functioning.....	16
	Appendix 2 –Annual Work Plan with Activities across the year .....	17-19

## 1.0 Introduction

This is the fourth annual report of the East Coast Hawke's Bay (ECHB) Te Tairāwhiti ki Te Mataua-Māui Conservation Board (the Board) which was re-established in March 2014. The Board is one of 15 Conservation Boards appointed by the Minister of Conservation under Section P of the Conservation Act 1987. The functions and powers of the Board are outlined in Sections 6M and 6N respectively. The Board has its own geographically defined area with 7 members for the 2017-2018 year appointed by the Minister of Conservation under the terms of the Conservation Act 1987. The Board is an independent advisory body representing the community and offers interaction between communities and the Department of Conservation, within the area of jurisdiction of the Board.



## 2.0 Message from the Chair, Penny Shaw

Once again I would like to thank all the Board individually for their professional contributions to ensure effective teamwork over the last 12 months. I look forward to another busy year ahead working together, especially with the reappointment of Jo Blakeley as my extremely competent Deputy. As Chair and supported by the rest of the Board, I reiterate that we are still frustrated by the elongated progress of our Conservation Management Strategy (CMS) development, but understand the importance of intertwining this document with Ngati Porou's Nga Whakahaere Takirua so they can be jointly publically notified early 2019. We at last have our final draft so are now awaiting the full merged document with high expectations.

I would like to say a very special thanks to departing member Vicki Thorpe. She has been both a mentor and person of strength for this Board since we started in 2014 with her extensive conservation experience and knowledge plus her legal expertise. She has given all of the Board guidance with the immense task of writing the East Coast Hawke's Bay CMS. Her experience and knowledge of this region and all "Conservation Board" things has been immensely appreciated. Vicki will be missed but we feel sure that she will still be very active in our community's future conservation projects.

I was privileged to represent the Board at the DOC Community Fund round 4 meetings in Wellington to confirm the 2017 recipients for this region. From the original 44 applications we then needed to analyse further of the total allocation of \$400,000, to ensure equality of distribution across all Lower North Island regions.

We eagerly followed the changing focus brought by the new Minister who requested DOC to ramp-up its advocacy of the environment through the Resource Management Act process because of the crisis facing New Zealand's biodiversity. Our Board actively submitted to several council Long Term Plans, especially with regards protection of the Ahuriri Estuary, as well as supporting the Ngaruroro and Clive Rivers Water Conservation Order Project.

Four of our board visited with the Chatham Islands Board in March, on a reciprocal trip following up from their board's visit to last February's meeting in Gisborne. We shared our CMS experiences to date along with visiting some of their estate and discussed and compared issues and concerns at Board level. Both boards have found these exchanges useful and the opportunity to network with positive benefits of viewing pertinent conservation sites alongside the locals at each region. We appreciated their hospitality over an especially busy week and in particular the Moriori Kopinga Marae experience.

Once again on behalf of the Board I would like to thank both Operations Managers who manage two great DOC offices maintaining community links and keeping all of us abreast of developments within our region.



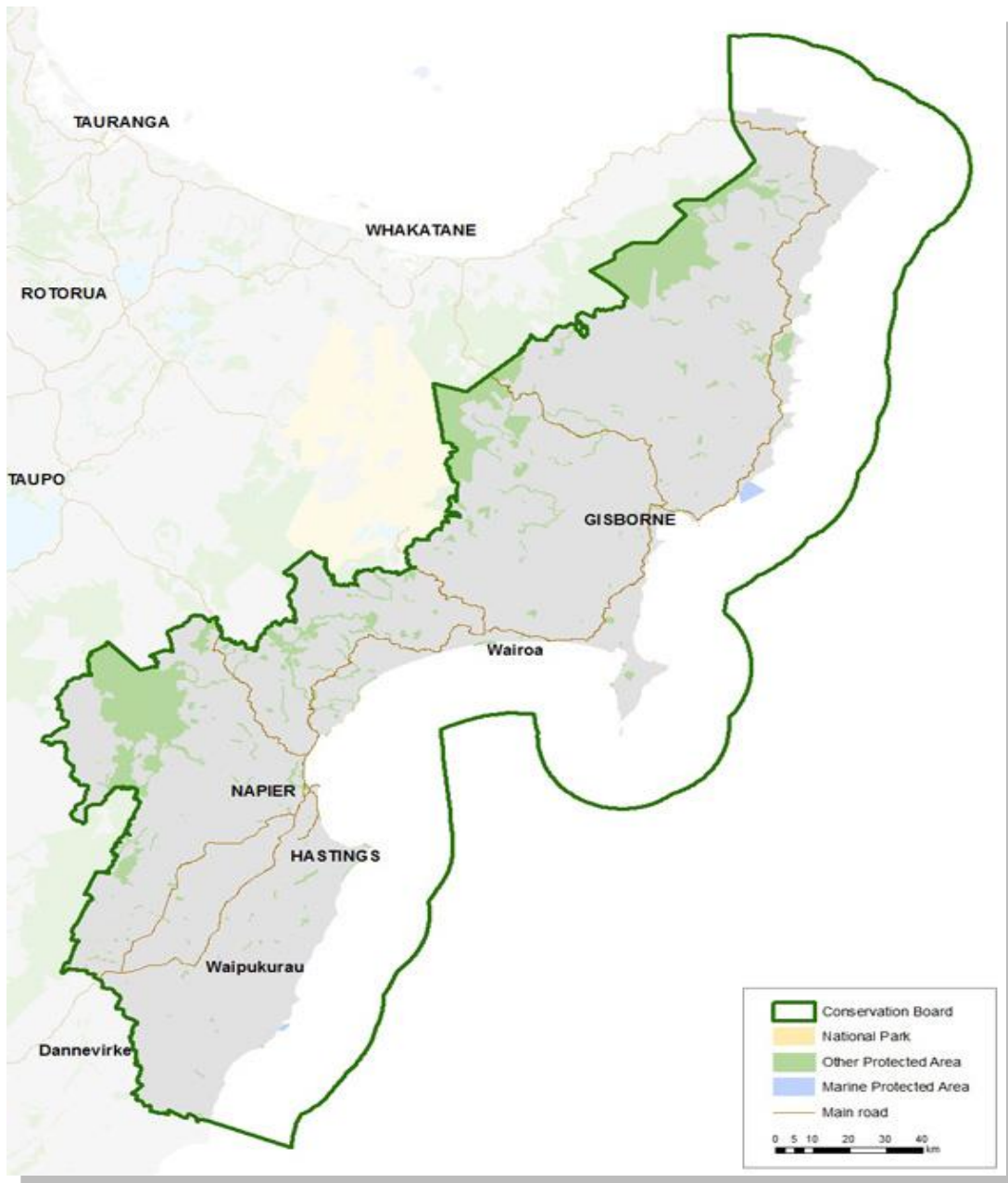
Penny Shaw

Chairperson - East Coast Hawke's Bay Te Tairāwhiti ki Te Matau-a-Māui Conservation Board

### 3.0 Conservation Board Region

#### 3.1 Coverage

The East Coast Hawke’s Bay Te Tairāwhiti ki Te Matau-a-Māui Conservation Board’s coverage extends from Te Araroa (north of Gisborne) to Mangaorapa (Central Hawke’s Bay) on the East Coast of the North Island.



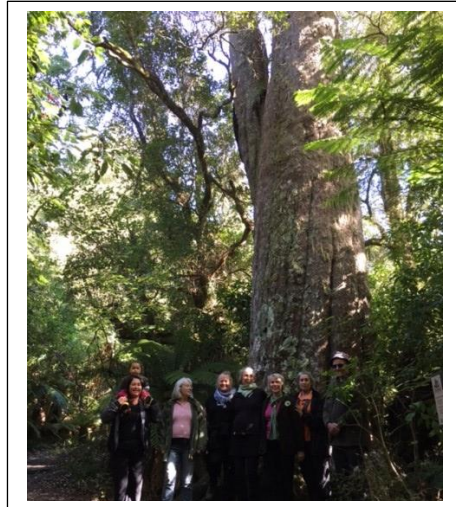
Map of East Coast Hawke’s Bay Te Tairāwhiti ki Te Matau-a-Māui Conservation Board area

### 3.2 Significant areas of natural and historic importance

#### HAWKE'S BAY

##### Boundary Stream Mainland Island

Boundary Stream Mainland Island is home to a number of threatened species including North Island brown kiwi, kākā, kōkako, New Zealand falcon (kārearea) and kereru, as well as walks such as to the Kiwi Guardian Big Matai, pictured to the right when the previous Board visited.



##### Cape Kidnappers Gannet Reserve

The reserve is managed by Department of Conservation to protect gannet nesting sites, the 13-ha reserve includes the Saddle and Black Reef Gannet colonies.

##### Kaweka Forest Park

The Forest Park is characterised by alpine shrublands, tussock valleys and beech forests with pockets of podocarp. Many native birds can be found in the area including the North Island brown kiwi, New Zealand falcon (kārearea), North Island kākā, and the blue duck (whio). Ten native freshwater fish species have been recorded in the Mōhaka River.

##### Ōtātara Pā Historic Reserve

One of the largest and most ancient Māori pa sites in the Hawke's Bay. It is significant for the immense size and large number of terraced dwelling sites and food pits. Remnant earthworks of many of these are still evident today.

##### Te Angiangi Marine Reserve

On the central Hawke's Bay coast approximately 30 km east of Waipukurau and Waipawa, Te Angiangi Marine Reserve protects a piece of coastline of approximately 446 ha.

The reserve is special in that it contains several marine habitat types, including boulder bank area, rocky intertidal platforms and a sheltered bay that is perfect for snorkelling.

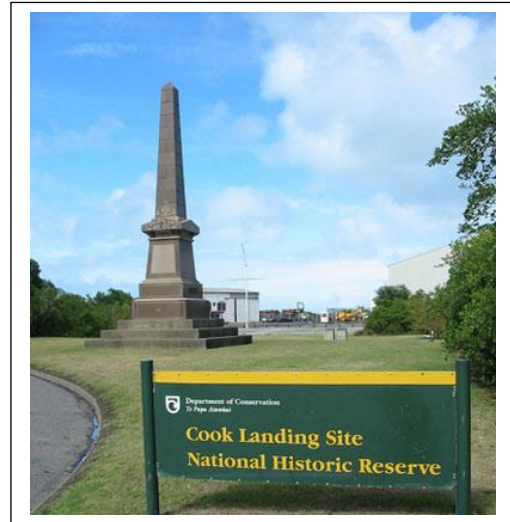


## EAST COAST

### Cook Landing Site National Historic Reserve

*Photo: Cook Landing, Gisborne.*

On Kaiti Beach in Gisborne, this reserve commemorates the first landing place of James Cook in New Zealand in 1769. The site is believed to be within a short distance of the actual landing site, and not far from Te Toka a Taiau where the first significant meeting between Māori and European took place.



### Raukumara Forest Park

The Raukumara Forest Park is one of the least developed or visited tracts of bush in the North Island. Recreation opportunities include climbing Mount Hikurangi, rafting the Motu River and mountain biking Otipi Road.

### Cooks Cove Walkway

The walkway was named after the Cove and the English sailor and explorer, Captain James Cook. He visited the area in 1769 as part of his circumnavigation of New Zealand.

Cooks Cove Walkway is situated at the southern end of Tolaga Bay, 52 km north of Gisborne.

### Gray's Bush Scenic Reserve

Gray's Bush Scenic Reserve is a small but highly significant remnant of the tall kahikatea (podocarp) forest which once covered much of the Gisborne Plains. Forested areas are rare on the plains which have been extensively cleared and drained for pastoral farming and agriculture.

It is semi-coastal in character and has a dominant canopy of kahikatea, with significant presence of puriri. It also provides a nesting, resting and feeding habitat for a number of different bird species both native and introduced.

### Te Tapuwae o Rongokako Marine Reserve (North of Gisborne)

Protects approximately 2,450 ha of coastline and contains eight marine habitat types that are representative of the area, including inshore reef, rocky intertidal platforms and sediment flats.

Kelp forests, marine snails, kina, sponges, seaweed and a diverse range of fish can be found in the reserve.

## 4.0 Membership of the Board

Members are appointed to the East Coast Hawke’s Bay Te Tairāwhiti ki Te Matau-a-Māui Conservation Board by the Minister of Conservation and are representative across the different communities and interests within the region.

During 1 July 2017 to 30 June 2018 there were seven members on the Board.

Table 1: summarises the Board membership during the 2017/18 year:

Name	Area	Date first appointed	Term ends
Penny Shaw (Chairperson)	Gisborne	1 July 2014	30 June 2019
Joanne Blakeley (Deputy Chair)	Napier	1 July 2014	30 June 2021
Marijke Warmenhoven	Ruatoria	1 July 2016	30 June 2019
Lucy Meagher	Havelock North	1 July 2016	30 June 2019
T K Hawaikirangi	Napier	1 July 2017	30 June 2020
Sam Gibson	Whangara	1 July 2017	30 June 2020
Vicki Thorpe	Gisborne	1 July 2014	30 June 2018

## 4.1 Member Profiles

Name	Personal Profile
Penny Shaw (Chairperson)	Penny is a life member and president of Tourism Eastland. She has detailed knowledge of the tourism industry on the East Coast and is experienced as a member, president and secretary of boards and committees. Currently also Group welfare Manager for Tairāwhiti Civil Defence. Her outdoor recreation interests are gardening, hiking, cycling and travel.
Joanne Blakeley (Deputy)	Jo is on the senior leadership team of the Eastern Institute of Technology and is qualified in horticultural science and management. She has experience in strategic and project management, quality assurance, policy development and environmental education. Her outdoor recreation interests include tramping, cycling, gardening and sailing.
Vicki Thorpe	Vicki is a qualified barrister and solicitor with 30 years experience in legal practice. She has significant experience on boards and committees with extensive involvement with the local Māori community via The Rangatahi Court. She was a trustee of the Eastland Community Trust and is the Conservation Board’s representative on the Te Tapuwae o Rongakako Marine Reserve Committee. Her recreation interests are fishing and skiing.

Personal Profile	Personal Profile
<b>Marijke Warmenhoven</b>	Marijke works as a Youth Court Lay Advocate in the Gisborne District Court and also in Te Kooti Rangatahi Marae based Youth Court. She has an Environmental Science with Law degree and has significant experience in Governance, especially Ngati Porou Health and as an inaugural elected Director to Te Runanganui o Ngati Porou. She completed a Certificate in Company Direction with the New Zealand Institute of Directors along with many other governance trainings.
<b>Dr Lucy Meagher</b>	Lucy is a science teacher at Havelock North High School. She has a degree in agricultural chemistry and has been employed previously by the US Department of Agriculture, Fonterra and AgResearch. She has prior experience as a technical member of the Food Standards ANZ board. Her outdoor interests are in tramping, fishing, and helping in the restoration of wetlands for native birds.
<b>Rapihana Te Kaha (TK) Hawaikirangi</b>	TK has been a Project Manager for the Tutira Lake restoration project, an Oiled Wildlife Regional Co-ordinator, and a DOC ranger. He has been a marae and hapu representative on environmental matters and serves on the Waiokiki Marae Committee and Te Wai Mauri Charitable Trust. Iwi affiliations: Ngāti Kahungunu, Waitaha, Ngāti Māmoe, Ngāi Tahu.
<b>Sam Gibson</b>	Sam has experience with land and environmental management with DOC, Cape Sanctuary and as a consulting ecologist. He has a close working relationship with iwi and strengths in pest control, outcomes monitoring, and increasing public interaction with the whenua.

## 5.0 Board Activities

The Board varies the location of its meetings to ensure that it meets across the region. This enables the Board to view the issues that are arising in the region and to hear from the public and be accessible to them.

During the 2017/2018 year, the Board's formal programme comprised 4 meetings and 3 field trips. Meetings of the Board were held in Gisborne (twice) and Napier (twice)

Field trips were to National Historic Cook's Landing Site and Morere Hot Springs, Ahuriri Estuary, Uawanui/Cooks Cove and Ōtātara Pa

### 5.1 Board meetings

Table 2: The Board scheduled four full day meetings

Meeting date	Meeting location and venue
21-22 July 2017	Cosmopolitan Club, Gisborne and Department of Conservation, Gisborne
27-28 October 2017	Department of Conservation, Napier
23-24 February 2018	MPI Offices, Gisborne and Department of Conservation, Gisborne
27-28 April 2018	Department of Conservation, Napier

## 5.2 Board Member's Attendance

Table 3 below summarises the number of Board meetings and field trips attended by members out of the total number of meetings held during the year. A highlight for the year was the February Board meeting when the East Coast Hawke's Bay Conservation Board combined with the Chatham Islands Conservation Board, sharing ideas and commonalities.

Members attended other meetings and events in their role as Board members, including subcommittee meetings and representative roles.

Board Member	Number of meetings attended (4 held)	Number of field trips attended (4 held)
Penny Shaw	3	3
Joanne Blakeley	4	4
Lucy Meagher	4	4
Marijke Warmenhoven	3	3
Vicki Thorpe	2	2
T K Hawaikirangi	4	4
Sam Gibson	3	3

## 5.3 Board sub-committees and liaison

The Board did not form any sub-committees for 2017/2018 because members agreed that all would be involved at the final stage in preparing our Conservation Management Strategy. The Concessions sub-committee was prepared to re-form when any trigger was actioned.

### Advice and Advocacy

All Board members have responsibility for liaising with other groups when opportunities arise, and some members have specific roles in liaison.

The following liaison roles were agreed for 2017/18:

#### Fish and Game Council

Hawke's Bay            T K Hawaikirangi  
Gisborne                Penny Shaw

#### Other Conservation Boards

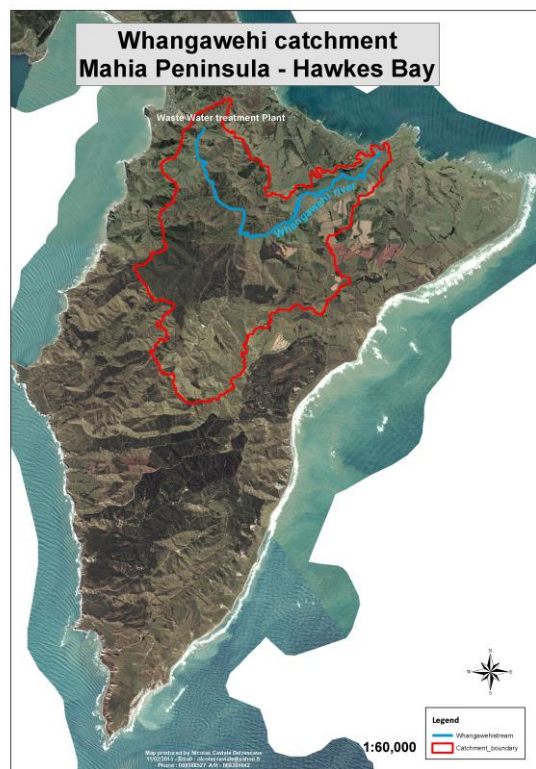
Bay of Plenty            Marijke Warmenhoven  
Tongariro-Taupo        Vicki Thorpe  
Wellington                Jo Blakeley

#### Territorial Authorities

Gisborne                 Penny Shaw  
Hawke's Bay              Jo Blakeley

## Community Fund Projects

Putere Lakes restoration Ngāti Pāhauwera	Sam Gibson
Whangawehi Catchment Management Group	Sam Gibson
Whinray Ecological Charitable Trust	Penny Shaw
Tairāwhiti Environment Centre	Vicki Thorpe
Longbush Ecological Trust	Penny Shaw
Ngāi Tāmanuhiri	Vicki Thorpe
Forest Life Force Restoration Trust	Sam Gibson
Lake Whatumā Wetland Care Group	Lucy Meagher
Friend of A'Deane's Bush	Jo Blakeley
Havelock North Intermediate School	Jo Blakeley
LR and VS Cave (Whareponga Wetland Restoration)	TK Hawaikirangi
Tutira Partnership	TK Hawaikirangi
Cape Sanctuary	Jo Blakeley
Lower Taipo Stream Westland Enhancement	TK Hawaikirangi
Pukehapopo Re-vegetation and Biodiversity	Marijke Warmenhoven
Titirangi Restoration	Penny Shaw
The Matuku Enhancement Habitat Project	Sam Gibson



*Map produced by Nicolas Caviale Delzescaux  
Whangawehi Catchment Management Group*

## 5.4 Board Training

In addition to the regular updates on the Department's activities provided in the status report which is considered at each meeting, the Board received additional briefings and updates. Topics covered this year were:

- Ngati Porou representatives Herewini Te Koha presented the Nga Whakahaere Takirua background
- CMS review process
- How Section 4 applies to the East Coast Hawke's Bay Conservation Board and applying this when working on the CMS.

The Department also provided an update on conservation activities within the local area at each meeting location.

Two board members attended the LNI hapu and whanau training session Pukenga Atawhai, at Kahungunu Marae in Nukaha in June 2018, which covered local iwi history, iwi organisations and Treaty settlement issues. Te Kaha Hawaikirangi and Lucy Meagher claimed the highlight was the Powhiri organised by Carl Baker, Pou Tairangahau for the Lower North Island. There are four kaawai (learning objectives) lead by the Pou and a field trip with local Kaumātua to the coast enabling a view the RocketLab launch site. Māori conservation values and how these beliefs impact tikanga Māori and how these influence the activities of the DOC Conservation board. This linked to our previous February 2018 board visit to the Morere Hot pools where this time we were able to soak in the geothermal waters each evening after our learning sessions. Finally making it real hearing from Taata taata trust about their experiences. Lucy expressed her appreciation to DOC for organising attendance at this event for board members to be using these new skills to achieve better outcomes our on-going priorities.

## 5.5 Field Trips

Visits to specific locations provided opportunities for the Board to:

- Become more familiar with the conservation values of key places.
- Discuss management challenges and approaches with DOC staff and stakeholders.
- Increase understanding and opportunities for conservation growth.

### 2017/18 field trip highlights:

- **Puhi Kai Iti/Cook National Historic Landing Site - July 2017**
- The Board is looking forward to supporting this redevelopment with DOC joining the Navigations Project governance group and assisting the partnership to ensure this national icon receives the recognition it deserves.

### Moreere Hot Springs - July 2017

The Board visited Moreere Scenic Reserve and was updated on new improvements in walkways and the recently established trap network that aims to control rats and stoats for the return of birdlife. Walking the newly refurbished Nikau track was a highlight. Current concessionaires, Wendy and Paul hosted the Board and described their work with locals and visitors, such as WWOOFers and EIT students, who jointly assist in the demands of walkway and weed



Board Members at Moreere from left to right: Sam Gibson, Rapihana Te Kaha Hawaikirangi, Penny Shaw, Jo Blakeley and Lucy Meagher

### Ahuriri Upper Estuary - October 2017

Anna Madarasz, Senior Scientist Coast Quality HBRC, gave a presentation on Te Whanganui ā Orotu, Ahuriri Estuary.

Anna gave a guided walk of the upper Estuary and spoke on the plans for controlling invasive pests such as the tubeworm.

Board members viewed the significant pressures from adjacent land users and from urban drainage into the upper Estuary.

Biodiversity and the role of the estuary for migratory birds were also keenly discussed.



In Photo from left to right: Rapihana Te Kaha Hawaikirangi, Sam Gibson, Rauru Kirikiri (NZCA), Jo Blakeley and Vicki Thorpe

Photo below view of the upper Ahuriri Estuary



## Uawanui Project – February 2018

The Board visited the Cook’s Cove Walkway as guests of The Uawanui Project. Board members experienced the enthusiasm for this nationally acclaimed 100 year visionary Project. The project’s values and opportunities align with DOC especially regarding Healthy Environment – Healthy People / He Manawa Whenua – He Oranga Tangata. After a welcoming introduction from Victor Walker, Uawanui Trust chairman, Peter Handford briefly outlined the restoration work on Titirangi Station, while Nori Parata extolled the changes in the school’s curriculum for students to focus on the Place around them (The Uawanui) as a grounding for their future, wherever in the world they go. The Board also appreciated teacher Richard sharing one student’s response when puffing heavily as he walked up the steep hills for planting and restoration work to state how it “still beats being in the classroom”. The linkage of conservation with education was demonstrated through the success of the cadetship programme.



*Photo by TK Hawaikirangi  
At Cook’s Cove Walkway overlooking Uawa River estuary  
and Tolaga Bay township, Of ECHB Conservation Board,  
and DOC staff, Uawanui Project members and Dept of  
Education representatives.*



## Ōtātara Pā – April 2018

Board members and local DOC staff paid a visit to Ōtātara Pā Historic Reserve where they were guided up Ōtātara Pā by kaitiaki hapū member Chad Tareha of Ngāti Pārau. The board soaked up stories of the Pā site and the surrounding area, including the history behind the naming of the Tūtaekuri River.

The commanding view from the Pā site over the Napier and Hastings area was a fitting environment for the Board to discuss the Department of Conservation draft 5 year Plan for the Historic Reserve, which is classed as Category One Historic Place of national significance. The Board were impressed with the proposed plan and excited for the opportunities that it presented for the local hapū and community in the future.

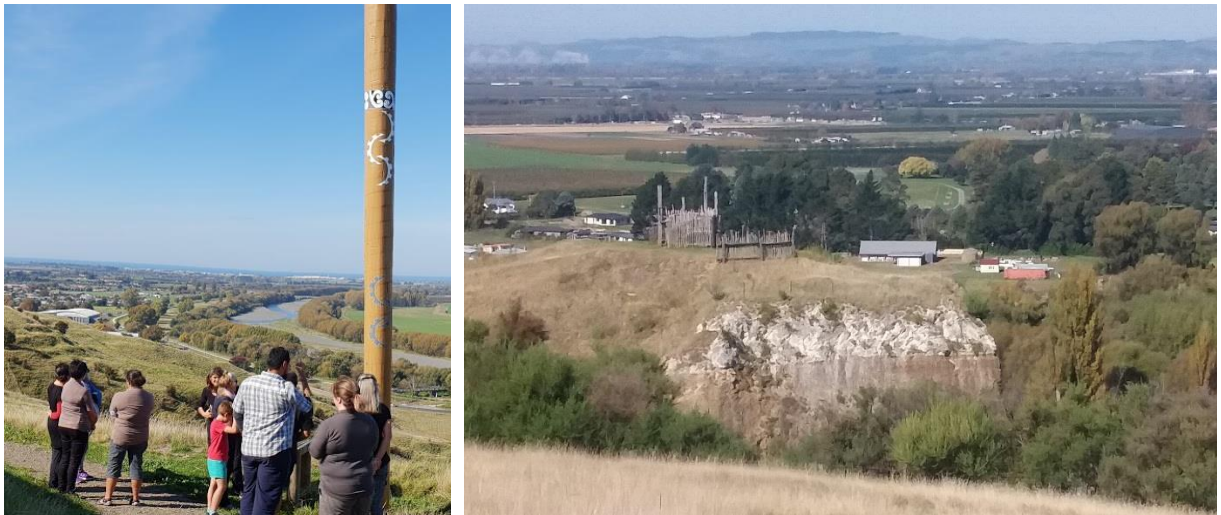


Photo by Jo Blakeley as Board and DOC view Tūtaekuri River from an Ōtātara Pā pou whilst listening to Chad Tareha.

## 5.6 Special Events

### Trip to Chatham Islands

The four Board members who travelled to the Chathams felt the wet weather was part of the island's charm, as Operations Manager Dave Carlton showed them the south and east to get some background on the island's heritage. One highlight was with CI board chair Amanda Seymour, along with kaumātua Mana Cracknell, to visit Tuku Farm, to the predator proof fenced site near Point Gap to see the 5<sup>th</sup> and final CI Albatross translocated chick colony. Then inland to the original predator proof fenced area (Sweetwater) to learn about their successful breeding of both the extremely rare Taiko as well as the Chatham petrels. On returning to Taiko Camp, the programme was discussed along with future plans as well as the successful breeding programme for Parea on the farm. When joining the CICB meeting, following a drive to Chatham Island's north east to learn about the heritage of the Moriori tree drawings at Hapupu National Historic Reserve, both boards shared similarities and differences between our two regions and discussed diverse conservation strategies. They all learnt lots from Maui Solomon, Mana and Pauline Mackay and felt very privileged. An extremely interesting few days from which this board will be advocates for the Chatham Islands' conservation projects as well as ambassadors for their



Photo by Liz Tuanui at Taiko Camp.

From the left Vicki Thorpe, Marijke Warmenhoven, Liz Tuanui, Bruce Tuanui, Mana Cracknell, Mike Bell, Jilleen Chandler and kneeling in front Penny Shaw and Amanda Seymour.

## 6 Community and DOC Involvement in Board Meetings

The Board believes that working with conservation organisations and members of the public is very important. During 2017/18 the Board welcomed individuals to a Public Forum, a half an hour session scheduled at each meeting, to enable people to speak to the Board about agenda items or other conservation issues. The Board regards the Forum as an important opportunity to hear from the community and hopes more people take up this prospect in 2018/19.

Matters raised by speakers who participated in these Forums included the following:

- Sandy Bull, Mike and Bridget Parker - Anaura Bay
- Sue Macdonald and June Graham - Ahuriri Estuary

Department of Conservation staff attend each Board meeting as required to provide information. The presence of these staff members at meetings has facilitated open dialogue and good working relationships between the Board members and the Department. Board members regularly communicate with DOC staff between meetings and participate in DOC events

### 7.0 Liaison

The Board liaises with Community Fund projects that have a focus on supporting native bird species through habitat protection and regeneration, and breeding programmes.

Rauru Kirikiri is the NZCA member liaison with the Board. Rauru attended two Board meetings during the year, at which time he updated the Board on the activities of the NZCA.

The Board receives the agenda, papers and minutes of the NZCA meetings. The NZCA also communicates on a regular basis with the Board's Chairperson.

The Board allocates liaison roles with their immediate neighbouring Boards, and includes their minutes in the Board papers, and had representatives from the BOP board attend the .

### 8.0 Community

Board members are well known in their local communities and have regular contact with members of the public. Where possible the Board tries to meet with local community groups while on site visits.

Board members are invited to join in activities organised by the Department and other conservation groups, which gives members a chance to interact with other community groups.

### 9.0 Acknowledgements

The Board thanks the Department's District Operations Managers John Lucas (Gisborne) and Connie Norgate (Hawkes Bay) for providing the Conservation Board with quality reports that kept the Board aware of progress across the region and organising field trips to sites of importance in our region. We also thank the Lower North Island Regional Statutory Manager (Chris Visser) for keeping the Board informed with regular updates on events, submissions and organising Board meetings, and the Regional Director Operations Reg Kemper for his attendance and attention to our meetings.

## Appendix 1 – Conservation Act / Board Functioning

### Board Functions Under Section 6m of the Conservation Act 1987

The functions of each Board shall be—

- 1) to recommend the approval by the Conservation Authority of conservation management strategies, and the review and amendment of such strategies, under the relevant enactments:
- 2) to approve conservation management plans, and the review and amendment of such plans, under the relevant enactments:
- 3) to advise the Conservation Authority and the Director-General on the implementation of conservation management strategies and conservation management plans for areas within the jurisdiction of the Board:
- 4) to advise the Conservation Authority or the Director-General—
- 5) on any proposed change of status or classification of any area of national or international importance; and
- 6) on any other conservation matter relating to any area within the jurisdiction of the Board:
- 7) to liaise with any Fish and Game Council on matters within the jurisdiction of the Board:
- 8) to exercise such powers and functions as may be delegated to it by the Minister under this Act or any other Act.

### Powers of the Board under Section 6n of the Conservation Act 1987

- 1) Every Board shall have such other functions as are conferred on it by or under this Act or any other Act.
- 2) Without limiting the generality of subsection (1), each Board may –
  - a) Advocate its interests at any public forum or in any statutory planning process; and
  - b) Appoint committees of members and other suitable persons, and delegate to them functions and powers.
- 3) The power conferred by subsection (2)(a) shall include the right to appear before courts and tribunals in New Zealand and be heard on matters affecting or relating to the Board's functions.

## Appendix II –Annual Work Plan

### Work Programme Overview

The East Coast Hawke’s Bay Conservation Board work programme was developed from the previous year’s work programme with updated regional priorities. The Board recognises that its focus is on policy issues, strategic direction and planning and not on the operational details of the Department of Conservation.

Colour	Indicates
	Completed
	Underway or ongoing
	Action Overdue

NYS = Not yet started

### WORK PROGRAMME FOR 2017/2018

	Planned Board Activities	Achievements
	Develop the East Coast Hawkes Bay and Ngati Porou Nga Whakahaere Takirua Conservation Management Strategy (CMS) draft for public notification early 2018 in preparation for NZCA’s approval in the 2018/19 year.	The ECHB CMS draft is near completion but awaits the development of the Nga Whakahaere Takiura (NWT) CMS. Public notification of the joint ECHB-NWT CMS is deferred to early 2019.
	Nurture working relationships with Fish and Game Councils regarding issues of mutual interest within the ECHB.	Regular consultation with both the Eastern and HB Fish and Game Councils.
	<b>Provide advice to the Department on the Te Tapuwae o Rongokako Marine Reserve</b>	Regular communications through our Board representative on Te Tapuwae o Rongokako Marine Reserve Committee and support for all marine reserve promotional activities and research.
	<b>Provide advice on proposed changes of status for nationally and internationally important areas, when sought by staff.</b>	<ul style="list-style-type: none"> <li>Board representative attended Protected Areas Symposium in Christchurch (June 2018) run by Lincoln University and NZ Conservation Authority.</li> </ul>
	<b>Provide advice on proposed changes of status for nationally and internationally important areas, when sought by staff.</b>	<ul style="list-style-type: none"> <li>Ahuriri Estuary Protection Society have kept the Board regularly updated through the Public forum on the management of the estuary.</li> <li>The board support DOC progress on the Puhi Kai iti / Cook Landing Site National Historic Reserve project</li> </ul>
	<b>Pursue all reasonable opportunities to advocate at hui and community forums an in any</b>	Board submissions made on: <ul style="list-style-type: none"> <li>Napier City Council LTP,</li> <li>HB Pest Plan</li> </ul>

	<p>statutory planning processes relevant to conservation</p>	<ul style="list-style-type: none"> <li>• HB Sports Fish and Game Management Plan</li> </ul> <p>Kept updated on the Ngaruroro and Clive rivers Water conservation Order following the Board's earlier submission.</p> <p>Advocating at Eastland Port Hui on their new development at Gisborne Board Riders.</p> <p>Verbal submission made on Gisborne District Council LTP with regards biodiversity goals and pest management.</p>
	<p><b>Supporting Biodiversity Improvement Actions for our regions</b></p>	<p>Attending a GDC Biodiversity and Pest Management discussion by their Environment and Science Manager; Visited many local conservation projects as well as individual land owners within the region to consult and implement conservation strategies and advocated for Turanganui a Kiwa conservation at national level all across the country</p>
	<p><b>Board members will maintain good working relationships and open dialogue with Directors, Managers and Board Support Officers in order to engage strategically in conservation for the region</b></p>	<p>Regular meeting with both Operations Managers and Board Support by both Chair and Vice Chair ensuring relevant information was shared with the whole board.</p> <p>Two board members participated in Pukenga Atawhai Course</p>
	<p><b>Identify Opportunities building relationships to support Healthy Parks/Healthy People Program</b></p>	<p>Joined local community group with weeding and planting activities</p> 

	<p><b>Board members will liaise with neighbouring Conservation Boards in order to progress cross boundary CMS issues and other matters of mutual interest</b></p>	<p>Board reps visited each of our neighbouring boards once throughout the year with keeping abreast through respective minutes. Four Board members visited Chatham Islands with three attended a CICB meeting and agreeing to more liaison between the boards</p>
	<p><b>Board members will liaise regularly with other conservation entities, such as district and regional councils, NGO's and community groups, in order to enhance the work of the Board and pursue good working relationships on issues of mutual interest and concern</b></p>	<p>Both the chair and vice chair maintain good communication links with their respective Regional Councils while all board members belong to a range of community groups</p>
	<p><b>Board Members take initiative to meet with community groups and general public to gauge community reaction to conservation initiatives planned or implmented by DOC</b></p>	<p>Including proactive meetings with iwi, hunters, conservationists and DOC regarding Battle for our Birds; Attending public seminar during archaeology week and attending a tour of Napier Port with a presentation on proposed extension with an additial Wharf and their RMA Submission</p>

This report is presented to the New Zealand Conservation Authority as required by the Conservation Act and distributed to interested parties. Members of the public are welcome to attend Conservation Board meetings. If you would like more information on the East Coast Hawke's Bay Te Tairāwhiti ki Te Matau-a-Māui Conservation Board please see the website [www.conservationboards.org.nz](http://www.conservationboards.org.nz) or contact the Board Support Officer, at the Department of Conservation in Palmerston North phone (06) 350 9700 or e-mail [sarobinson@doc.govt.nz](mailto:sarobinson@doc.govt.nz)