

# Canterbury Aoraki Conservation Board



*Te Rūnanga Papa Atawhai o Waitaha me Aoraki*

**Annual Report July 2015 – June 2016**



# Canterbury Aoraki Conservation Board

## *Te Rūnanga Papa Atawhai o Waitaha me Aoraki*

Annual Report for the year ending 30 June 2016

Presented to the New Zealand Conservation Authority  
Pursuant to Section 6(O) of the Conservation Act 1987



Karearea/NZ Falcon, D Busbridge

**Cover photograph:** Members of the Canterbury Aoraki Conservation Board at Tasman River Delta on field trip to Aoraki/Mount Cook National Park, S Slatter 2015

L – R: Robert Wynn-Williams, Helen Ivey, Peggy Burrows, Sue McKenzie, Teoti Jardine, Mick Abbott, Sam Newton, John Lewis

Absent: Paula Smith, Joseph Hullen, Bruce Rule

ISSN: 1179-2469 (Online)

Serviced by:

Department of Conservation

Private Bag 4715

Christchurch Mail Centre

Christchurch 8140



Department of Conservation  
*Te Papa Atawhai*



## Chairperson's Report – the year in review



Kia ora

It has been a very active year for the Canterbury Aoraki Conservation Board.

Our most significant milestone was completing the Canterbury Waitaha Conservation Management Strategy. Developing the strategy, which had been distracted by the Canterbury earthquakes, was the result of the combined efforts of the Department of Conservation, Ngāi Tahu, the many groups and individuals who contributed submissions, all the members of the Conservation Board, as well the New Zealand Conservation Authority.

The strategy emphasises the importance of place in the many ways it connects people and conservation values. It provides much greater clarity for conservation outcomes that we are all seeking, and incorporates many of the previous individual plans that had been spread across the region. It also signals ways in which active users of public conservation lands, can respect and support values important to manawhenua. The objectives and policies for Kura Tāwhiti (Castle Hill) provide clear guidance for this.

Another important milestone is the initiation of the Aoraki/Mount Cook National Park Management Plan review. We are again looking forward to the same active participation by the many people and groups for whom this place is special.

The Canterbury Waitaha area continues to have pastoral leasehold land re-designated as public conservation land. This provides a great opportunity to strengthen both conservation and recreational values. However, the addition of almost 40,000 ha over a 24-month period also demands the careful allocation of resources to ensure protection and management are robust.

Replacing the Stewardship Land status of the St James Conservation Area with more robust protection remains a high priority for the Board. We also note that in our Conservation Management Strategy there is a ten-year goal to achieve the strongest levels of protection for some of our unique braided rivers, as we together support regional efforts to realise values of Ki Uta Ki Tai – from the Mountains to the Sea. The Board looks forward to playing it's role in realising these outcomes.

The Board is extremely grateful to the full support given to it by the Department of Conservation. We would especially like to thank Shirley Slatter, who as our Board Support Officer has provided exemplary support to the functioning of the Board, and who is now leaving this role to focus on her Senior Ranger roles at Aoraki/Mount Cook. Farewell too, to Board members John Lewis and Peggy Burrows, your commitment to the Board's work is hugely appreciated.

Our deep appreciation to all those in our community and in the Department of Conservation for all that is being done to protect our region's most important places and treasures.

Nga mihinui

*Mick Abbott.*

Mick Abbott

## Contents

<b>Chairperson’s report – the year in review</b>	<b>3</b>
<b>Introduction</b>	<b>5</b>
<b>Annual Work Plan</b>	<b>7</b>
<b>Board Current Area</b>	<b>9</b>
<b>Membership</b>	<b>11</b>
<b>Conservation Board Meetings</b>	<b>12</b>
<b>Members’ Attendance</b>	<b>12</b>
<b>Field Trips</b>	
Living Waters – Ararira Catchment	<b>13</b>
Mackenzie Basin	<b>14</b>
Aoraki/Mount Cook National Park	<b>15</b>
Waimakariri Basin and Kura Tāwhiti	<b>16</b>
Historic fieldtrip – Ōtamahua/Quail and Ripapa Islands, Godley Head	<b>17</b>
<b>Community and DOC Involvement in Board Meetings</b>	<b>18</b>
<b>Subcommittees and Subcommittee Structure as at June 2016</b>	<b>20</b>
<b>Board Functions Under Section 6m of the Conservation Act 1987</b>	
Conservation Management Strategies	<b>21</b>
Conservation Management Plans	<b>21</b>
Change of Status	<b>22</b>
Conservation Advice	<b>23</b>
Liaison with Fish and Game Councils	<b>23</b>
Delegated Functions	<b>23</b>
Other Functions	<b>23</b>
<b>Powers of the Board under Section 6n of the Conservation Act 1987</b>	<b>24</b>
<b>Responsibilities under other Sections of the Conservation Act 1987</b>	<b>25</b>
<b>Board Functions under the National Parks Act 1980</b>	<b>25</b>
<b>Liaison</b>	
Liaison Persons	<b>27</b>
Other Conservation Boards	<b>27</b>
Community	<b>28</b>
Conservation Board Award	<b>29</b>
District and Regional Councils	<b>29</b>
Iwi	<b>29</b>
Non-Government Organisations	<b>30</b>
<b>Appendix I – Annual Work Plan and Milestone’s</b>	<b>31</b>

## Introduction

This is the eighteenth annual report from the Canterbury Aoraki Conservation Board, as required under Section 6 of the Conservation Act 1987.

The Canterbury Aoraki Conservation Board is a twelve-member citizen body appointed by the Minister of Conservation under the terms of the Conservation Act 1987, Part IIA and Section 6.

This year there were two new appointments to the Board. One, a general member, was appointed in July 2015, and the other, a Ngāi Tahu appointee, in December 2015 (due to a resignation). There were also two re-appointments. Mick Abbott was elected as the new Chairperson in November 2015, and Robert Wynn-Williams was elected as the Deputy Chairperson.

Conservation Boards are independent bodies, established by statute. The Canterbury Aoraki Conservation Board represents the community of interest in the work of the Department of Conservation, and conservation in general, within the area of jurisdiction of the Board.

The Board works within a partnership between the Department, the Minister of Conservation and the public. As the public voice for community input into conservation, the Board is an independent trusted advisor to the Department and the New Zealand Conservation Authority.

The Board helps to achieve conservation outcomes for New Zealand and particularly the **Canterbury region** by:

- Contributing a strategic perspective to conservation planning, policy development and decision-making as a well-informed voice of the community
- Exercising powers of recommendation and approval for statutory management planning documents
- Advising on the implementation of statutory planning documents
- Advocating for conservation outcomes, including in public forums and through statutory planning processes

The roles and functions of the Conservation Board are set out in the **Conservation Act 1987** as follows:

- To recommend the approval by the New Zealand Conservation Authority of conservation management strategies and the review and amendment of such strategies, under the relevant enactments (in particular the Canterbury Conservation Management Strategy)
- To approve conservation management plans, and the review and amendment of such plans, under the relevant enactments
- To advise the New Zealand Conservation Authority and the Director-General on the implementation of conservation management strategies and conservation management plans for areas within the jurisdiction of the Board
- To advise the New Zealand Conservation Authority or the Director General on any proposed changes to the status or classification of any land areas of national or international significance



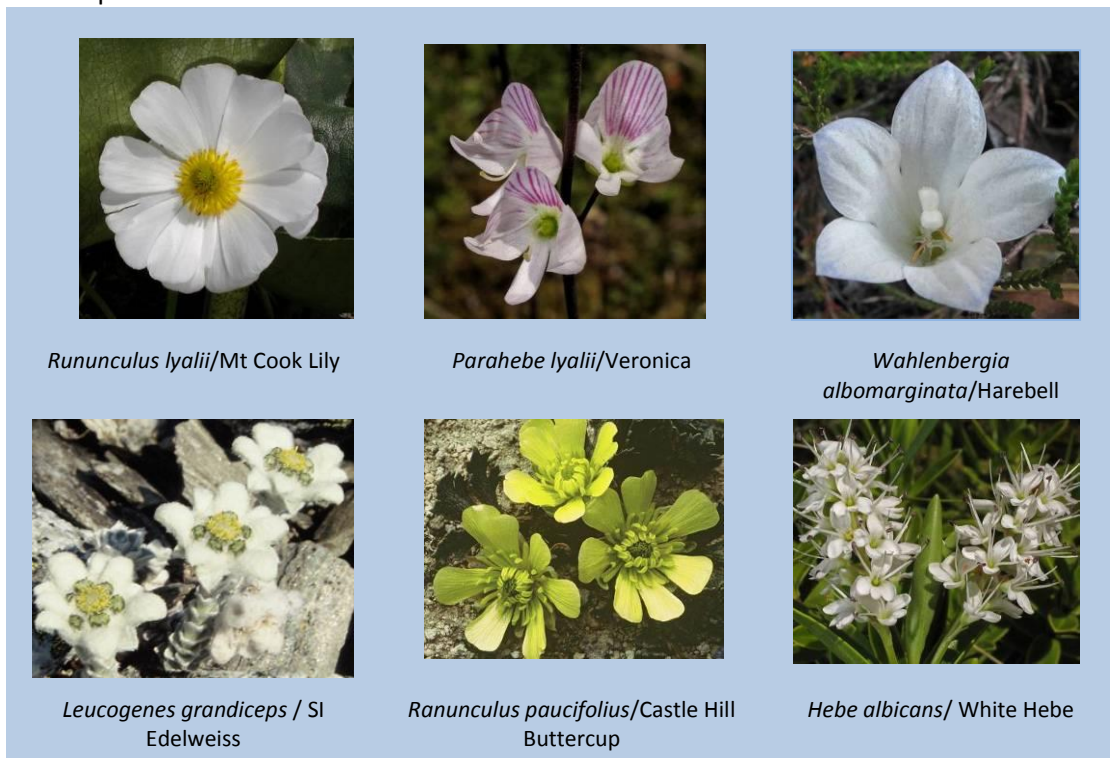
- To advise the New Zealand Conservation Authority or the Director General on any other conservation matter relating to any area within the jurisdiction of the Board
- To liaise with Fish and Game Councils on conservation matters
- To exercise such powers and functions as may be delegated to it by the Minister of Conservation, the Conservation Act 1987 or any other act of parliament

The roles and functions of the Conservation Board are set out in the **National Parks Act 1980 (section 30)** are as follows:

- To recommend management plans, and the review or amendment of such plans, for national parks within the jurisdiction of the Board (in particular the Aoraki/Mount Cook and Arthur’s Pass National Parks)
- To consider and determine priorities for the implementation of management plans for national parks (in particular the Aoraki/Mount Cook and Arthur’s Pass National Parks)
- To review and report to the Director General or the New Zealand Conservation Authority as appropriate, on the effectiveness of the administration of the general policies for national parks within the jurisdiction of the Board
- To give advice to the Director General or the New Zealand Conservation Authority on the interpretation of any management plan for a national park, and on any proposal for the addition of land to any national park, or the establishment of a national park, and on any other matter relating to any national park within the jurisdiction of the Board

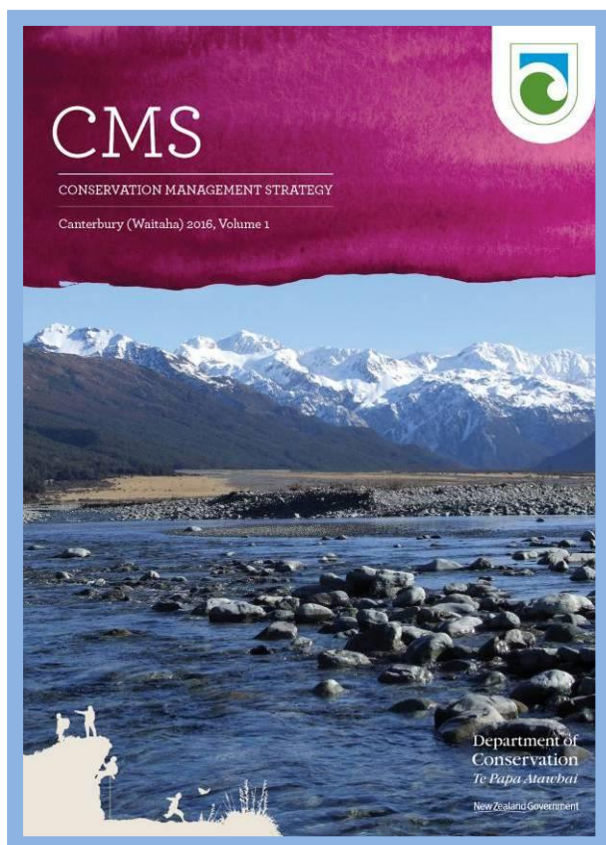
The Board is serviced by the Department of Conservation.

Section 60 of the Conservation Act requires that every Conservation Board provide the New Zealand Conservation Authority with an annual report as soon as practicable after 30 June each year. In recognition of this requirement, the Canterbury Aoraki Conservation Board submits its Annual Report for consideration.



## Annual Work Plan

The Board received a “Letter of Expectation” from the Associate Minister of Conservation, the Hon Nicky Wagner in September 2015. This letter set out what the Associate Minister required the Canterbury Aoraki Conservation Board to achieve for the 2015/16 year. She outlined five main areas that she wanted the Board to work on, and report on via this report.



### *Conservation Management Strategy (CMS)*

This was a major area of focus for the Board, culminating in several years of work. The CMS process in this financial year involved the Board reviewing the draft Canterbury (Waitaha) CMS and working their way through all the alterations and additions that were requested by the New Zealand Conservation Authority. A lot of work had been done previously in re-wording the milestones to make them more relevant and measurable. The CMS was presented to the New Zealand Conservation Authority at the 4 August 2015 meeting, and from there it came back to the Board for further clarification and alteration and addition to wording. The process of going through all the requested changes, and the addition of further Ngāi Tahu text took up the majority of the Board’s time. Agreement on the changes was reached and passed at the 15 April 2016 meeting, and the CMS sent back to the NZCA for a final time. The CMS was signed off in June 2016, and becomes operative in September 2016.

The Board used the CMS milestones to outline some of their work for the coming year. Each Board member chose a milestone from the then draft CMS, and used this as a method to request updates from the Department, but also to determine how the Board could support the Department in reaching the milestone. Refer [Appendix I](#) for a list of those milestones.

The Board also structured several field trips around the CMS, to see how this related to on-the-ground management of areas, and also how the milestones could be progressed. These field trips included the Mackenzie Basin, the Waimakariri Basin and Kura Tāwhiti and the Historic Fieldtrip including Ōtamahua/Quail and Ripapa Islands and Godley Head.

### *National Park Management Plan Review*

Progress on the Aoraki/Mount Cook National Park Management Plan review has been slow but steady. The Department advertised their “Intention to Review the Plan” in June 2016. Prior to this, the Board and the Department had been working with Te Rūnanga o Ngāi Tahu to develop a way to work together, r to produce a truly bicultural park plan. The Board is keen to work with the West Coast *Tai Poutini* Conservation Board to resolve cross boundary issues with the Westland *Tai Poutini* National Park Management Plan.

A field trip was held in November to visit Aoraki/Mount Cook National Park to view and discuss management issues in relation to the plan, and also the Board met with concessionaires at a luncheon function, where they could discuss particular issues in an informal manner. This meeting was invaluable for teasing out some of the issues concessionaires and stakeholders have.

## Stewardship Land

The Board has had the issue of reclassification of Stewardship Land on their agenda at each meeting. They are still awaiting a list from DOC on the areas they should be considering for Canterbury, but the main area that still remains at top priority, is the St James Conservation Area. Two other areas the Board was asked to consider were additions to the Ahuriri Conservation Park, and additions to the Kaitorete Spit Scientific Reserve. The Board considered both areas were a good addition and a wise reclassification of Stewardship Land.

## Other Functions

This year there has been no proposed changes of status for nationally and internationally important areas which include World Heritage, Ramsar, national parks and conservation parks. The only advice the Board has given to the Department has been on those areas mentioned above in Stewardship Land.

Liaison with the Fish and Game Council has continued, with the Board adding support to the Fish and Game submission by submitting on the Resource Consent Application for River Mouth Openings.

A presentation was also given to the Board by the Game Animal Council and the Board considered what support or otherwise it could give the Council.

## Advocacy

The Board members have been active in exercising its advocacy power. Several submissions have been made to various organisations on wide and ranging topics – see **Conservation Advice** under **Board Functions under Section 6M of the Conservation Act 1987** for a full list of the submissions. Board members have also been active in their community in advocating for good conservation outcomes and encouraging recreation groups to get involved in caring for facilities on conservation lands (see story below). Examples of advocacy, liaison and community meetings and committees that Board members have attended, is listed under **Liaison**, further on in this report.

The Canterbury Aoraki Conservation Board Award is also a key advocacy function that the Board supports. This year the Board have concentrated on revamping this award and will be presenting it to winners of four separate categories in October 2016.

## Summary

Please refer to **Appendix 1** for a full report on the Board's Annual Work Programme.

In early December 2015, five volunteers from the New Zealand Alpine Club (NZAC), including Board member Sam Newton, flew into Dasler Biv in the Hopkins Valley. Dasler Biv was built in 1966 by the NZ Forest Service as a deer cullers hut.

The aim of the trip was to carry out hut maintenance on the Biv, under the auspices of the Outdoor Recreation Consortium, which is a beneficiary of the Community Conservation Partnership Fund (CCPF).

The group spent their time repainting the hut and applying an oil treatment to the floor. "We also lowered the top bunk to make it more comfortable for anyone over six-foot tall, and cleared out all the built up leaf litter material from the west wall – this improved ventilation and water flow underneath the hut" said Board member Sam Newton. He added "on a rainy day in which we couldn't do any painting, we visited Red, Elcho and Cullers Huts, which are all in the neighbourhood. We walked out on the last day." This is a great example of the good usage of the CCPF funding, and NZAC is a regular partner in these activities.



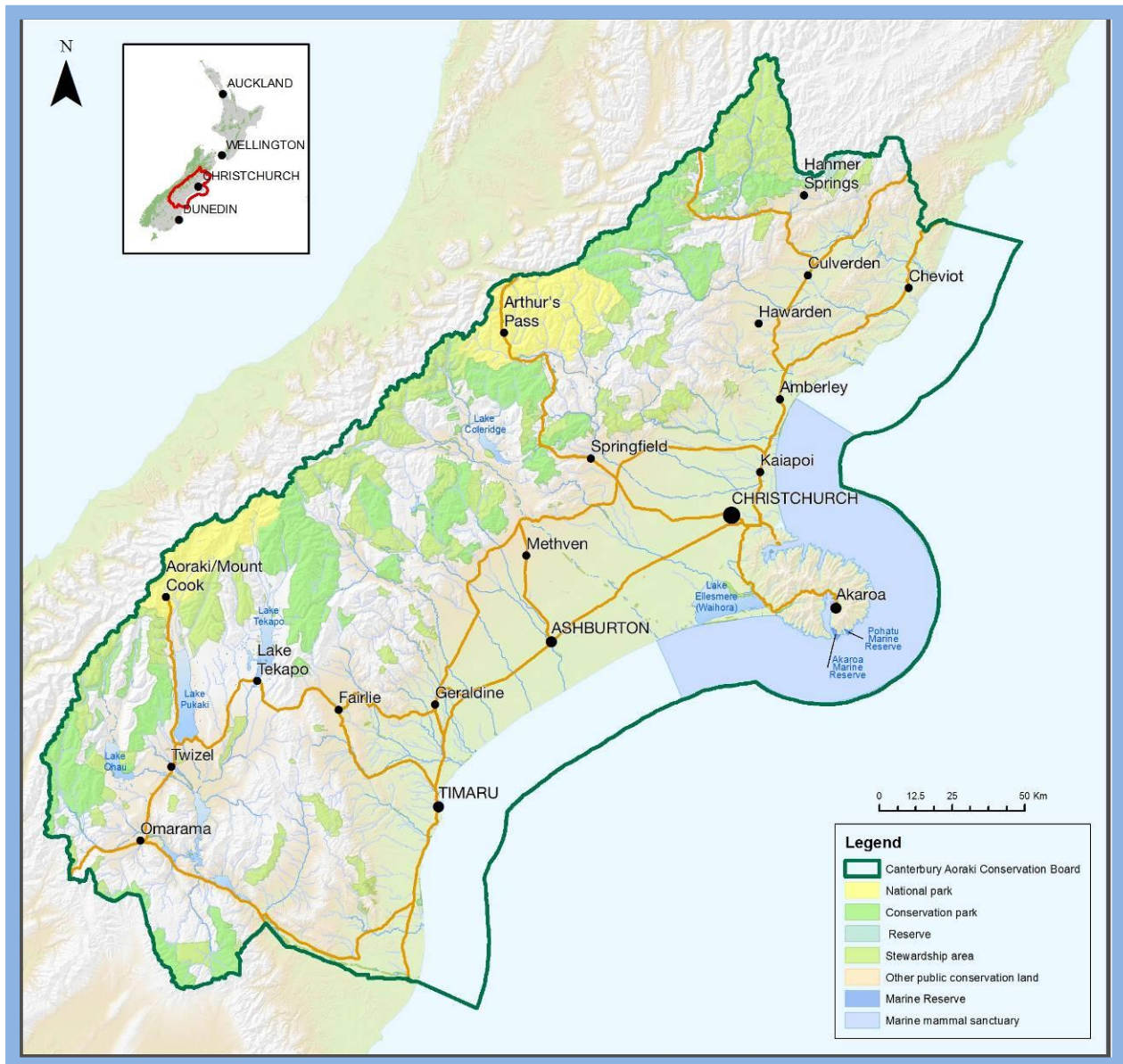


## Board current area

The Board's area of jurisdiction extends from the Conway and Clarence rivers in the north, and west to the main divide, including all of the Arthur's Pass and Aoraki/Mount Cook National Park.

The southern boundary is the catchment of the Waitaki River at Kurow, along the river to the east coast.

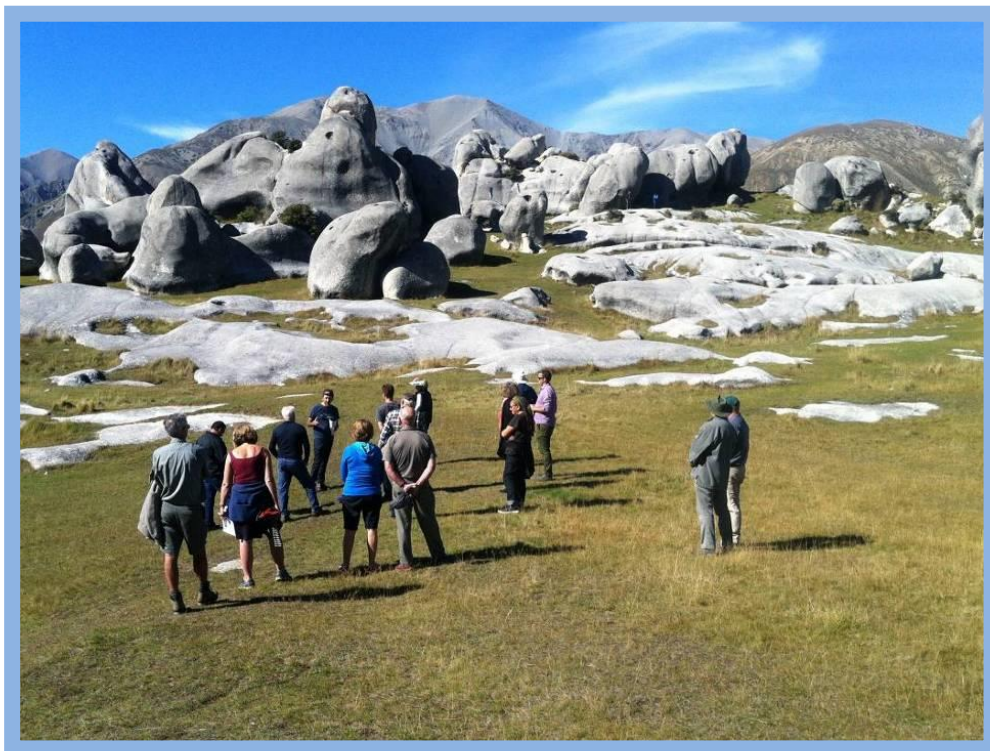
The coastal boundary is the twelve-mile limit for marine reserves and the Exclusive Economic Zone for marine mammals.



**The main features of Public Conservation Land and Water within the Board's boundaries are:**

- Two national parks (Aoraki/Mount Cook and Arthur's Pass)
- Part of one national reserve (Lewis Pass Scenic)
- Eight conservation parks (Craigieburn, Lake Sumner, Hanmer, Ahuriri, Korowai/Torlesse Tussocklands Park, Ruataniwha, Hakatere and Te Kahui Kaupeka, part of Hawea and part of Oteake).
- Hurunui, Hawdon and Poulter predator-controlled areas (formerly part of Operation Ark)
- Two marine reserves (Pōhatu and Akaroa)
- One wilderness area (Adams) that is jointly managed between Canterbury and the West Coast
- A large number of recreation, scenic, historic, scientific, nature and other reserves and conservation areas including Stewardship areas. This includes in excess of 80,000ha of new Conservation Lands at St James providing a diverse range of recreation and special protected areas.
- The DOC managed part of Te Waihora/Lake Ellesmere

The Canterbury Region directly administers 1,117,254 hectares including the 215 hectare Pōhatu Marine Reserve and the 512 ha Akaroa Marine Reserve. Over the last three years just over 87,417 hectares of Public Conservation Land (PCL) has been added to the region, including 12,146 hectares in the last 12 months from the following tenure review processes: Mt Gerald, Maryburn, Cora Lynn, Glenrock Rakaia and Omarama Station.



The Board at Castle Hill/Kura Tāwhiti Nature Reserve, S Slatter



## Membership

The Board comprises eight general members and four appointees of Te Rūnanga o Ngāi Tahu (\*), in accordance with section 273 of the Ngāi Tahu Claims Settlement Act 1998.

One new member, Sue McKenzie, was appointed in July 2015.

Peter Ramsden (Ngai Tahu appointee) resigned in August 2015, and Te Awhina Arahanga was appointed to take over his position in December 2015.

Dr Mick Abbott and Teoti Jardine were reappointed for a term of another three years.

Dr Mick Abbott (Chair)

Te Awhina Arahanga\*

Peggy Burrows

Joseph Hullen\*

Helen Ivey

Teoti Jardine\*

John Lewis\*

Sue McKenzie

Sam Newton

Peter Ramsden\*

Bruce Rule

Paula Smith

Dr Robert Wynn-Williams

Banks Peninsula (Little River)

Taumutu (Lake Ellesmere)

Amberley

Tuahuriri (Kaiapoi)

Glentanner, Mount Cook

Arowhenua (Christchurch)

Rapaki (Lyttleton)

Charing Cross

Christchurch

Kourakourarata (Banks Peninsula) (Resigned)

Christchurch

Banks Peninsula (Diamond Harbour)

Christchurch



Dr Mick Abbott  
(Chair)



Dr Robert Wynn-Williams  
(Deputy Chair)



Te Awhina Arahanga



Teoti Jardine



Paula Smith



Helen Ivey



Bruce Rule



Sam Newton



Peggy Burrows



Sue McKenzie



John Lewis



Joseph Hullen

## Conservation Board meetings

The Canterbury Aoraki Conservation Board held five meetings during the reporting period. The venues for Board meetings is chosen each year to ensure as wide a coverage as possible, and to enable members of the public throughout their district to have access to the Board.

- |    |                   |                                   |
|----|-------------------|-----------------------------------|
| 1. | 11 September 2015 | Lincoln University, Lincoln       |
| 2. | 27 November 2015  | Aoraki/Mount Cook                 |
| 3. | 12 February 2016  | TRONT Office, Christchurch        |
| 4. | 15 April 2016     | Flock Hill, SH 73, Arthurs Pass   |
| 5. | 17 June 2016      | Christchurch DOC Office, Sockburn |

## Members' attendance

Board member	Area	Number of meetings attended *
Dr Mick Abbott	Little River	4/5
Te Awhina Arahanga	Taumutu (Lake Ellesmere)	2/3
Peggy Burrows	Rangiora	3/5 +
Joseph Hullen	Tuahuriri (Kaiapoi)	3/5
Helen Ivey	Glentanner, Mount Cook	4/5
Teoti Jardine	Arowhenua (Oxford)	5/5
John Lewis	Rapaki (Lyttleton)	5/5
Sue McKenzie	Charing Cross	5/5
Sam Newton	Christchurch	5/5
Bruce Rule	Christchurch	3/5
Paula Smith	Banks Peninsula	5/5
Dr Robert Wynn-Williams	Christchurch	5/5

+ leave of absence granted





## Field trips and site inspections

Five field trips and one workshop were held during the year

### Living Waters – Ararira Catchment, 10 September 2015

This field trip looked at the Te Waihora Living Water Programme which focuses on the Ararira/LII catchment. The Board looked at the following sites:

#### *Liffey Springs in Lincoln*

- These springs are situated in an urban community and subdivision, and are an important indicator of water quality for this area



#### *Silverstream*

- View and hear about the Canterbury University Freshwater Ecology Research Group (CAREX) waterway rehabilitation research and trial
- See how clearing of a waterway and replanting with native species can enhance the waterway and improve stream quality and appearance



#### *Te-rere-kau-tuku / Yarrs Lagoon*

- Discuss the potential opportunities to provide an improved wetland function

#### *Farm of Roger Brookes*

- Look at a potential planting site
- Discuss opportunities for riparian restoration and engagement with the local community

#### *Yarrs Flat Wildlife Reserve*

- Look at the potential of Yarrs Flat Wildlife Reserve as a community adopted site
- Discuss the draft landscape and community engagement plan
- Walk to the water's edge and discuss water quality issues with Lake Ellesmere



## **Mackenzie Basin, 25 November 2015**

The Board met at Lake Tekapo and travelled to several sites in the Mackenzie Basin to discuss the following:

Mackenzie Agreement; Drylands Park proposal; Wilding Conifer Management Strategy; Tenure Review outcomes; Irrigation and intensification of farming in the Mackenzie Basin.

The Board stopped at the following sites:

### ***Balmoral Station***

- Met with farmer Andrew Simpson
- Viewed a drylands area he has fenced off, and learnt about a trust he has formed to undertake scientific monitoring on his farm, both inside and outside the fenced and destocked area
- Discussion on ways of covenanting land to protect it
- Discussion on farming, and the use of irrigation in the Mackenzie Basin
- Discussion on the Mackenzie Agreement and what the Board can do to support the concept



### ***Haymans Road***

- Met with consultant Rob Young
- Presentation on the Wilding Conifer Strategy 2015-2030
- Discussion and viewing of problem areas with wilding pines and discussion on control methods
- Further discussion on the Mackenzie Agreement

### ***Irishmans Creek***

- Jeremy Severinsen, DOC Tenure Review Manager, provided the Board with an overview of the tenure review process and outcomes for Irishman's Creek
- Stopped on the canal road and viewed the areas that have come out of Tenure Review into either conservation land, or land that can still be farmed but has covenants on it
- Discussion on the landscape covenant that has been placed for 10 years, and that the Mackenzie District Plan should provide protection for the area after that

### ***Glentanner Station***

- Met with farmer Ross Ivey
- Discussion on farming and conservation
- What it means to farm and run a business adjacent to Aoraki/Mount Cook National Park
- Wilding pines in the true right of the valley



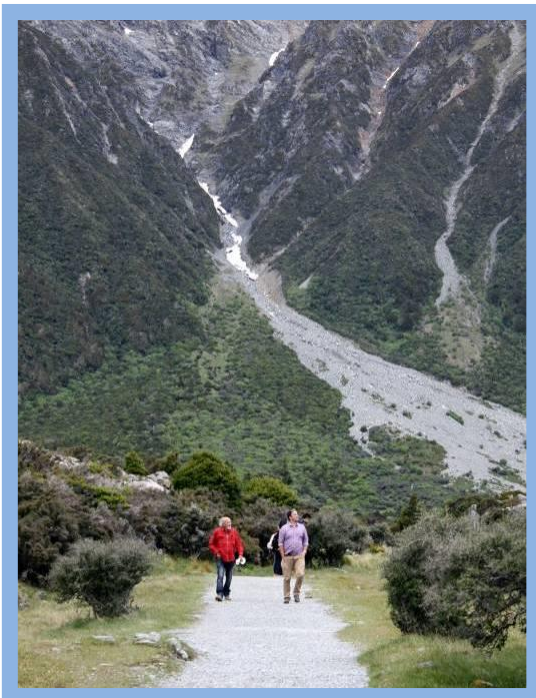


## **Aoraki/Mount Cook National Park, 26 November 2015**

The Board met in the Aoraki/Mount Cook village and travelled to various sites, to discuss concessionaire usage and tourism, and any issues relevant to the upcoming Aoraki/Mount Cook National Park Management Plan review.

### ***Tasman Delta***

- Met on the Tasman River Delta at the head of Lake Pukaki, to view Glentanner Scenic Reserve and LINZ land
- Discussion on the Kāki/Black Stilt programme and braided river birds in general, including the trapping programme for the valley
- Discussion on the LEOTC Education programme and possibility for a bird hide in the area



### ***Blue Lakes Carpark (Tasman Valley)***

- Discussion on concessionaires, who uses the area and their individual requirements
- Overview of Visitor Management Settings and their application in this context
- Discussion on the carpark and challenges of managing traffic and visitors in the park

### ***Whitehorse Hill Campground (Hooker Valley)***

- View of the campground and overview of the operation
- Discussion on managing traffic and visitors in this area
- Overview of Visitor Management settings and their application in this valley
- Walk of Hooker Valley track to view upgrade and visitor use

### ***Community Hall***

- Met with the local community, stakeholders and concessionaires
- Discussion with the above on their needs, and the upcoming Park Management Plan Review

### ***Village Tour***

- Stopped at various points around the village to look at usage, village zones and indigenous vegetation
- Discussion on complex nature of concessions at Aoraki/Mount Cook National Park
- Discussion on managing traffic and visitors around the Aoraki/Mount Cook village

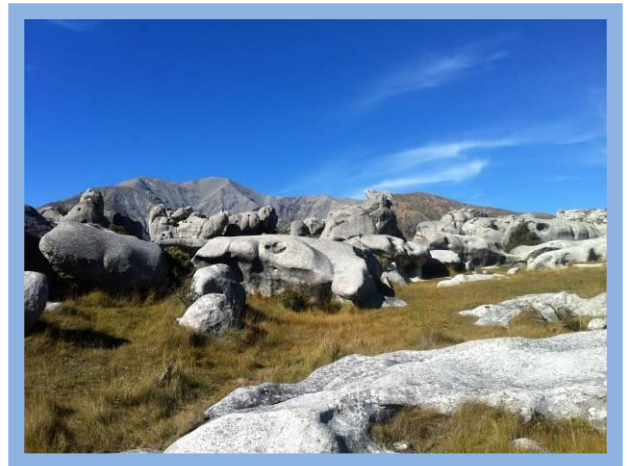


## **Waimakariri Basin and Kura Tāwhiti, 14 April 2016**

The Board met at Kura Tāwhiti and also at a few other sites throughout the Waimakariri Basin. The objective was to spend a good amount of time at Kura Tāwhiti to gain understanding of various user groups, and also the cultural history of the area. Other sites were visited to get an overview of recreation use in the Basin, and understand the extent of the wilding pine issue there.

### ***Kura Tāwhiti***

- Met at the carpark and walked around the reserve discussing the following:
- Cultural History – what this place means to Tuahuriri, a gathering place, mahinga kai gathering, rock art and shelters to name but a few
- Topuni status and Scenic Reserve
- Natural history and fenced-off predator exclusion area
- Visitor use and recreation in this area
- Bolting policy, NZCA and Ngāi Tahu agreement
- The CMS and what that means for this area



### ***Mt Cheeseman***

- Lunch at the ski lodge and discussion on the following topics:
- Concession activities
- Mountain Biking, recreation, and community use of the Waimakariri Basin
- Wilding pines, the spread, and control work being done

### ***Lake Pearson/Moana Rua campground***

- Discussion on the development plans for Lake Pearson with regards to a camping and parking area
- Recreational and visitor usage
- Natural history including willow removal and habitat enhancement for the Australasian Crested Grebe/kāmana



### ***Flock Hill***

- The Board met with representatives from WELRA – Waimakariri Ecological and Landscape Restoration Alliance – an alliance formed in 2008 of concerned partners
- Members represent local landowners and ratepayers, DOC, ECan, Canterbury Environmental Trust, NZ Conservation Trust and Individual Conservationists
- Discussion followed on the work WELRA is doing towards Wilding Pine control, the financial requirements of this work and the strategies being used
- Then the Board met with the manager of Flock Hill Station, and was given a talk about the work on the station, the owner's plans, and the conservation methods being employed in the development of Flock Hill Station



## Historic Fieldtrip to Ripapa and Ōtamahua/Quail Islands, Godley Head, 16 June 2016

The Board travelled to Ripapa Island, Ōtamahua/Quail Island and Godley Head, all historic places that the Department manages in and around Banks Peninsula. The objective was to see how the milestone 1.5.2 Historic and Cultural heritage in the CMS, was being measured and applied at these three places. It was also a chance to see how the earthquake had affected some historic places, and have discussion on what DOC was doing to help preserve these important sites. Understanding the cultural history of these three iconic places was also an objective for the Board



### *Ripapa Island*

- Korero on the cultural history, the use as a pa, and what it means today for local iwi
- Viewing and discussion on the historical usage of the island – Fort Jervis, the disappearing guns, use as quarantine station and imprisonment of Maori and WWII prisoners
- Discussion on earthquake damage, the importance of the island to the community, the future of the island and funding constraints on restoration of this magnificent historical site

### *Ōtamahua/Quail Island*

- An island of international historical significance - discussion centred on past use of the island as a quarantine station, leper colony, burial ground for ships, and general historical significance of the site
- Discussion and viewing of the restoration programme and what the Quail Island Restoration Trust is trying to achieve and what next for biodiversity restoration
- Viewing the natural and geological history of the island
- Korero on the cultural history and usage of Ōtamahua Island
- Discussion on how to increase recreation participation on this island



### *Godley Head Coastal Defence Battery*

- Built in 1939, the fort is ranked as the Department's top New Zealand coastal defence heritage site for WWII
- Viewing of the WWII buildings, the museum and the gun emplacements
- Discussion on the historical significance of this site and asset, and what it means to the local and wider community
- How the earthquake has affected this site, and what the future holds including camping and adaptive re-use of the facilities



## Community and DOC involvement in Board meetings

Throughout 2015/16 the Board welcomed presentations at its meetings, from members of the public and from Department staff who were responding to requests from the Board for more information on topics, so that Board members could make informed decisions.

The Board concentrated on getting briefings that were relevant to their Annual Work Plan and the CMS implementation.

These topics included:

- Jeff Dalley – Science and Policy Group, DOC, Monitoring. Jeff gave a presentation on the trial monitoring that he would like to implement at Aoraki/Mount Cook National Park this year, with a view to gathering data that will assist the management plan review, and to trial a toolbox of socio-economic monitoring.
- Dr John Keoghan an ex-Board member gave a presentation on the background and history of the Canterbury Aoraki Conservation Board Annual Conservation Award. This award is a key step for the Board in engaging with the conservation community, and has mana for those that receive it.
- Scott Theobald, DOC Biodiversity Ranger, spoke to the Board about the wallaby control programme in the Mackenzie Basin, and also about his previous role in DOC with Conservation Dogs.
- A luncheon was held at Aoraki/Mount Cook, for the Board to meet with interested stakeholders and members of the community. Those who attended were:
  - Mayor Claire Barlow (Mayor, Mackenzie District Council)
  - Leigh Stock (General Manager, Hermitage Hotel)
  - Andrew Hocken (Director, Aoraki Court Motels)
  - Anne Braun-Elwert (Owner, Canterbury Alpine Recreation Limited)
  - Pip Walters and Simon Middlemass (Managers, Unwin Lodge, NZAC)
  - Aoraki/Mount Cook School principal and pupils (waiata and performance)



Aoraki/Mount Cook School pupils perform waiata for the Conservation Board and community

- Geoff Kerr from the Game Animal Council (GAC) delivered a presentation to the Board on what the GAC is about, how they have come about and what the Government wants them to achieve. There was much discussion on what the role of the Board is, and whether the aims and aspirations of the GAC sat very well with the role of DOC and the Conservation Board.
- Stephen Espiner and Emma Stewart from Lincoln University presented to the Board a summary of the research they had carried out on the inner city Living Spaces programme, that DOC has been involved with.
- Two spokespersons from Waimakariri Ecological and Landscape Restoration Alliance (WELRA) spoke to the Board on the WELRA work in the Waimakariri Basin, and what they want to achieve with wilding pine control and ecological restoration in the Basin.
- A day long hui was held at Te Rūnanga O Ngāi Tahu (TRONT), where various speakers from TRONT presented to the Board on:
  - Who is Ngāi Tahu
  - What is Ngāi Tahu doing nationally, tribally and regionally
  - Combined areas of interest between TRONT and CACB
  - Update on Aoraki/Mt Cook National Park Management Plan review, and partnership and engagement with this
  - Cultural Mapping programme
  - Update on CMS and TRONT
  - Stewardship Land reclassification and what that means to Ngāi Tahu
  - General korero

The day was a chance for the Board and Ngāi Tahu to connect and share aspirations, and for the Board to see how they could support Ngāi Tahu in what they want to achieve.

- During field trips the Board met with various farmers to hear how conservation and farming can mix, what the challenges are with irrigation, wilding pines, tourism and the creation of conservation parks. The Board found it very useful to hear from this section of the community that are also dealing with many of the same issues that DOC does, but from a different perspective.

The farms were:

- Balmoral Station, Mackenzie Basin
- Glentanner Station, Mount Cook
- Flock Hill Station, Waimakariri Basin



Photos Top to Bottom:

Top Right: Balmoral Station

Middle Left: Glentanner Station

Bottom Right: Flock Hill Station



## Subcommittees

### Canterbury Aoraki Conservation Board Committee Structure as at June 2016

Committee	Function	Membership
<b>Aoraki/Mount Cook National Park Management Plan Review</b>	To review the plan	<b>Robert Wynn-Williams (Chair)</b> Teoti Jardine Paula Smith John Lewis Peggy Burrows Sam Newton ❖ Mick Abbott
<b>Awards, Marketing and Acknowledgement</b>	To plan and deliver an event to present the Board award in October	<b>Sue McKenzie (Chair)</b> Peggy Burrows ❖ Mick Abbott
<b>Concessions</b>	To advise DOC on any concessions that meet the Board triggers	<b>Peggy Burrows (Chair)</b> Helen Ivey Sam Newton Teoti Jardine ❖ Mick Abbott
<b>Iwi</b>	To liaise between Ngāi Tahu and the Board  To liaise with various runanga	<b>Teoti Jardine (Chair)</b> John Lewis Joseph Hullen Te Awhina Arahanga ❖ Mick Abbott
<b>Land and Water</b>	To submit submissions on any relevant district plans and other statutory processes	<b>Paula Smith (Chair)</b> Sue McKenzie Peggy Burrows Bruce Rule Joseph Hullen ❖ Mick Abbott
<b>Tenure Review</b>	To inspect and submit to LINZ on any farms that have a preliminary proposal advertised.	<b>Helen Ivey (Chair)</b> Sam Newton John Lewis Robert Wynn-Williams Paula Smith ❖ Mick Abbott

❖ Please note that the Board Chair, Mick Abbott is an ex-officio member of each sub committee



Hector's dolphin, C Bullock



## Board functions under Section 6M of the Conservation Act 1987

The work carried out during the year under Section 6M of the Conservation Act 1987 was as follows:

### Conservation Management Strategies

*To recommend the approval by the Conservation Authority of Conservation Management Strategies, and the review and amendment of such strategies under the relevant enactment M(1)(a)*

This process of reviewing the Canterbury (Waitaha) Management Strategy (CMS) continued on from the previous year. The Board submitted the CMS to the New Zealand Conservation Authority in August 2015. Several months of discussion followed between the Board and the NZCA subcommittee. The CMS was finally signed off by the NZCA in June 2016.

Section 17F(k) requires the Conservation Board to: ***consider the revised draft CMS, request the Director-General to further revise the draft, and send the draft to the Authority for approval, together with a written statement on any matters of content on which the Director-General and the Board are unable to agree, and send a copy of the summary of submissions.***

The Board reached agreement with the Department and NZCA on all revisions in the end, and the CMS was finally signed off in June 2016. This was much later than expected, due to the various revisions and additions that were requested by parties. A lot of time was spent dealing with the addition of new text from Ngāi Tahu, which was eventually agreed to by the Board at their April meeting.

This year the Board took a different approach to monitoring the CMS. They picked out eleven milestones from the new CMS, and a Board member was assigned to each milestone. Their role was to facilitate a method in which the Board could support the Department towards achieving the milestone selected.

Refer [Appendix I](#) for a list of the milestones.

### Conservation management plans

*To approve Conservation Management Plans, and the review and amendment of such Plans, under the relevant enactments 6M(1)(b)*

No management plans were reviewed, amended or approved during the 2015/2016 period.

### Implementation

*To advise the Conservation Authority and the Director General on the implementation of Conservation Management Strategy and Conservation Management Plans for areas within the jurisdiction of the board 6M(1)(c)*

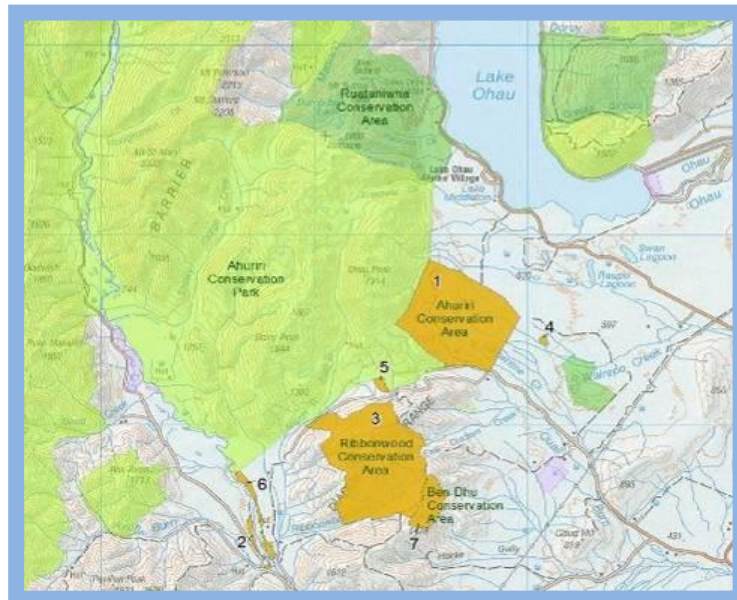
As above - no management plans were reviewed, amended or approved during the 2015/2016 period.

## Change of status

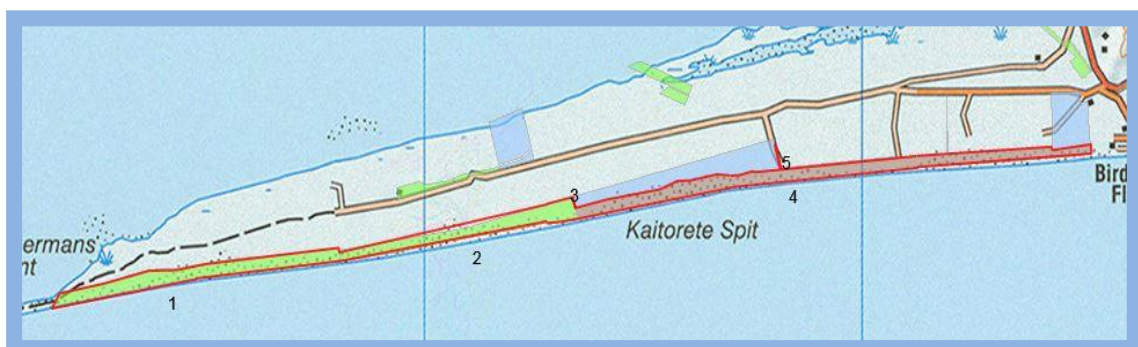
To advise the Conservation Authority or the Director General on any proposed change of status or classification of any area of national or international importance 6M(1)(d)(i)

The Board was asked to provide comment on reclassifying land in the following places:

- Ahuriri Conservation Park – addition of 4811.5ha of Stewardship Land to the Ahuriri Conservation Park (see map below) including:
  - Ribbonwood Conservation Area
  - Ben Dhu Conservation Area
  - Ohau Moraines Wetland Complex (Ahuriri Conservation Area)



- Kaitorete Spit — Kaitorete Spit is a mixed sand and gravel barrier that separates the Pacific Ocean from Te Waihora (Lake Ellesmere). It is approximately 27 km long with outstanding ecological and cultural values, and unusual geomorphologic features. The dune ecosystem supports many endemic species of fauna and flora, along with species of national significance, including arguably New Zealand's best population of katipo spiders. A proposal from DOC to classify land at Kaitorete Spit as Scientific Reserve, was received by the Board (see map below). This was discussed and advice given that this was a compelling case and sat well with the outcomes of the CMS. This is an area of importance and unique ecosystem, and the classification as Scientific Reserve will assist with protecting the whole ecosystem and environment associated with this area.



*The areas proposed for scenic reserve classification are bordered in red. The blue shaded areas are existing scenic reserve.*

## Conservation advice

*Any other conservation matter relating to any areas within the jurisdiction of the Board 6M(i)(d)(ii)*

Conservation matters the Board has given advice on to the department or NZCA or other government departments or bodies with an interest are:

- Tenure Review, including advice to the department; advocacy to LINZ and submissions on Tenure Review properties when required. This included:
  - Godley Peak Station
  - Island Hills Station
- Concessions, minimal required this year, but the Board takes an active interest in this process. Comment made on:
  - Ski Field Application Craigieburn Range
  - Re-establishment of a moratorium on permits for Hector's dolphins in Banks Peninsula
  - Awakino Ski Field Concession Application
- Draft Canterbury (Waitaha) Conservation Management Strategy
- Advice to Environment Canterbury (ECan) through submissions on the following:
  - Resource Consent Application for River Mouth Openings
  - Canterbury Regional Pest management Plan Review
  - Benmore Irrigation Scheme
- Advice to the Ministry for the Environment through submissions on the following:
  - "Topics for Environmental Report" paper
  - "Next Steps for Fresh Water" Discussion paper
- Advice to the Mackenzie District Council through submission on the following:
  - Amended Plan Change 13

## Liaison with Fish and Game Councils

*To liaise with Fish and Game Councils on matters within the jurisdiction of the Board 6M(1)(f)*

Bruce Rule as the Liaison appointed member of the Conservation Board, attended Fish & Game meetings, and met with the North Canterbury Fish and Game Manager on 16 May 2015. Discussions were held on a variety of topics, and both agreed to exchange public meeting minutes on a regular basis.

## Delegated functions

*To exercise such powers and functions as may be delegated to it by the Minister under this Act or any other Act 6M(1)(g)*

The Minister has not delegated powers or functions under this sub-section.

## Other functions

*Every Board shall have such other functions as are conferred on it by or under this Act or any other Act 6M(2)*

The Board ensures that its decisions and recommendations are consistent with the requirements of Section 4 and the Conservation Act 1987.

## Powers of the Board under Section 6N of the Conservation Act 1987

*Section 6.1 Every Board shall have all such powers as are reasonably necessary or expedient to enable it to carry out its functions 6N(1)*

The Board has focused its efforts during the year on:

- Submission of the Canterbury (Waitaha) Conservation Management Strategy and review of suggested changes and additions to text
- Tenure review
- Response to the Associate Minister on the Letter of Expectation and a preparation of an Annual Work Plan, with this being reported on at each Board meeting
- A concentrated effort by the Board to develop an understanding of the issues surrounding “Stewardship Land” and the Ministers request that all Boards consider what status Stewardship Land should be reclassified to. This involved two field days and presentations on how tenure review process worked and how lands coming out of tenure review are classified, and visits to some tenure review properties
- The Board has tried to focus on policy issues and became involved in management issues only when the Department requested comments or advice
- The Board has made several submissions to various organisations on areas that are of interest – see section on **Conservation Advice**

*Section 6.2 Without limiting the generality of sub-section (1) of this section each board may under 6N(2):*

- *Advocate its interest at any public forum or in any statutory planning process 6N(2)(a)*

There are 10 district plans within the Board’s area of jurisdiction.

The relevant committees monitor legislative changes, District Plan Reviews and resource consent applications and take appropriate action where conservation values are threatened.

See section on **Conservation Advice** for submissions that the Board has made. The Board has not requested to present these at any public forum however.

- *Appoint committees from members and other suitable persons and delegate to them functions and powers 6N(2)(b)*

Each committee of the Board has the power to act on behalf of the Board in accordance with its delegation, and any decisions made are ratified at the following Board meeting.

### **Draft general policies**

*The Conservation Authority may consult any Conservation Board about the draft of a general policy after receiving submissions on it 17b(3)(1)(ii)*

The General Policy for National Parks and the Conservation General Policy were adopted in May 2005.

### **Freshwater fisheries management plans**

*Draft freshwater fisheries management plans are to be prepared by the Department in consultation with the Conservation Boards affected by them 17K(1)(a)*

No such plans affecting the Board’s district are in preparation at this time.



### **Reduction of width of, or exemption from, marginal strips**

*The Minister of Conservation shall consult the relevant Conservation Board about any proposal made by a Crown Land disposal agency to reduce the width of, or provide an exemption from, a marginal strip, and on being satisfied that it is reasonable in the circumstances to do so, the relevant conservation board...may request the Minister to publicly notify the proposal. 24BA*

No consultations were made during the year.

### **Responsibilities under other sections of the Conservation Act 1987**

#### **Co-opting members of the Board 6Q(1)**

No members were co-opted during the year

#### **Advice on granting lease or licence in the absence of a CMS or CMP**

No advice was given during the year.

### **Board functions under the National Parks Act 1980**

*The Board is responsible, in conjunction with the Department, for preparing draft reviews of management plans, for hearing and deciding on public submissions on any draft review and for recommending any review to the New Zealand Conservation Authority for approval Sections 30(a) and 45-47*

There are two national parks either wholly or partially within the Board's area of jurisdiction. Each national park has a management plan which is reviewed at 10-year intervals.

- The Arthur's Pass National Park Management Plan has been reviewed and was approved by the New Zealand Conservation Authority on 13 December 2007.
- The Aoraki Mt Cook National Park Management Plan was approved by the New Zealand Conservation Authority on 14 April 2004 and the Department advertised their intent to review the plan in June 2016.



Waimakariri River, Arthur's Pass National Park, L Molloy

## ***Aoraki/Mount Cook National Park Management Plan***

The intention to review the Aoraki/Mount Cook National Park Management plan was publicly advertised in June 2016.

The Board have appointed a committee to assist the Department in undertaking the review. The main thrust of the committee's actions has been to take part in meetings with Department and Te Runanga o Ngāi Tahu planners, to enable a way forward in the process, that will allow the plan to be developed in a true partnership style.

The next stage will be to invite people to register their interest over a four-month period. After that public meetings will be held, and meetings set up with key stakeholders. By October 2016 DOC staff, working closely with Ngāi Tahu and the Conservation Board, will start drafting the plan. This will be a main area of work for the Board and the Management Plan Review Committee in the upcoming year.

### **Advise on any other matter relating to National Parks 30(f)(iii)**

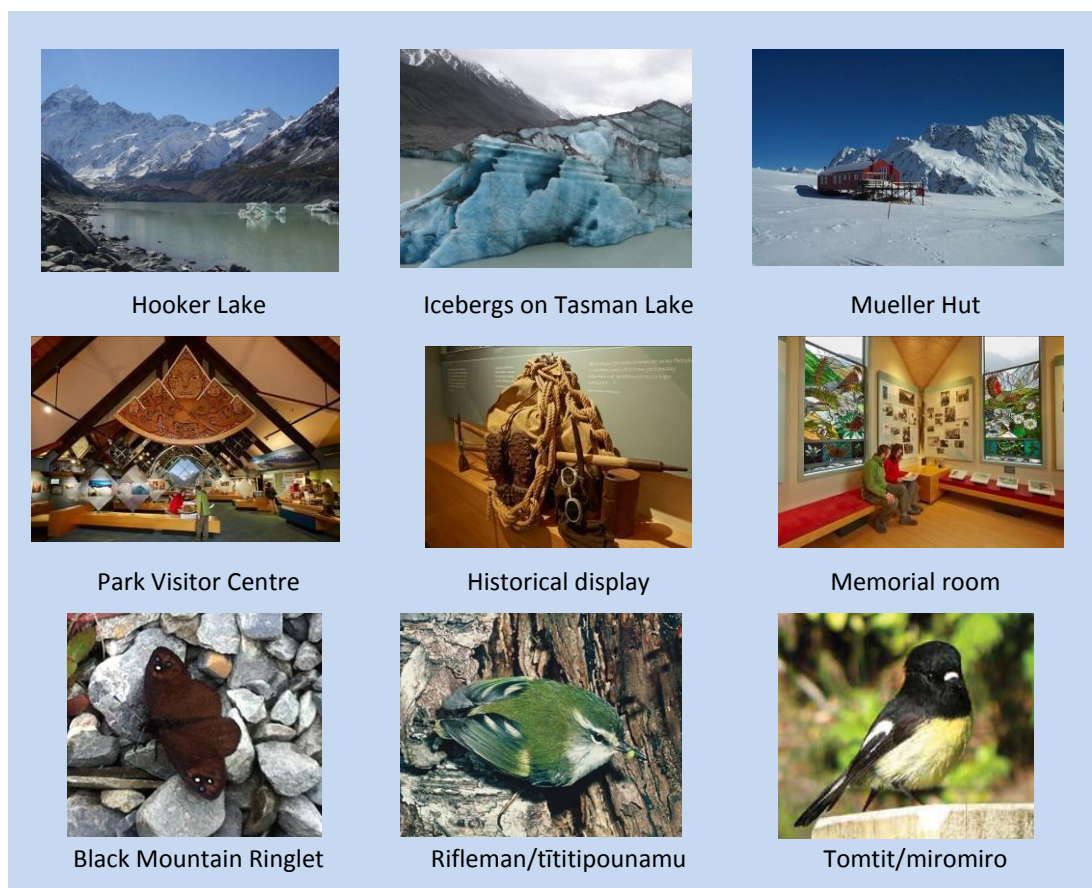
#### ***Aoraki/Mount Cook National Park***

The Board continues to have an ongoing interest in the management of the Aoraki/Mount Cook National Park, and advises the Department where required on concessions and other matters. No amendments were made to the Aoraki/Mount Cook National Park Management Plan in the 2015/2016 year.

#### ***Arthur's Pass National Park***

The Board continues to have an ongoing interest in the management of the Arthur's Pass National Park, and advises the Department where required on concessions and other matters.

No amendments were made to the Arthur's Pass National Park Management Plan in the 2015/2016 year.



## Liaison

The Board has appointed various members to liaise with outside agencies as follows:

### Liaison persons as at June 2016

Liaison Person	Organisation
Mick Abbott (Chairperson)	New Zealand Conservation Authority
Bruce Rule	Fish and Game Council Canterbury Region
Helen Ivey	Mackenzie District Council Himalayan Tahr Control Plan Implementation Group Tahr Interest Group
Iwi Committee	Te Runanga O Ngāi Tahu and associated individual runanga
Teoti Jardine	Avon Otakāro Group
Sam Newton	Recreation Groups
Paula Smith	Environment Canterbury & Territorial Authorities
Robert Wynn-Williams	South Island Conservation Boards Game Animal Council Deerstalkers Groups

### Other Conservation Boards

The Region's immediate neighbours are the Otago, West Coast *Tai Poutini* and Nelson/Marlborough Conservation Boards.

Robert Wynn-Williams as liaison person, monitors the minutes of the various boards for issues of common interest, and reports back at each meeting on common themes from the board minutes.

This year the Department continued with one regional meeting on November 25 2015, where the Board Chairs from the three Southern Conservation Boards (Canterbury, Otago and Southland) met to discuss areas of common interests or concerns. There was also a national conference for Board Chairs in Wellington on September 24 2015, where the various Board Chairs met with the Associate Minister of Conservation, the Director-General and the NZ Conservation Authority.

### Community

The Board has continued to involve the community in its work. It holds meetings around the Canterbury area and the public are encouraged to participate in public forums at these meetings. This year few public attended meetings, but the Board has been proactive in getting briefings on areas they needed information on – see section on [Community and DOC Involvement in Board Meetings](#), for more information on who has been asked to present to the Board.

The Board seeks to represent the public interest and continues to strive to learn the views of the public. It would like to encourage more people to attend meetings and take advantage of the opportunity to address the Board during the public forum.

Board members have been active in other areas where they are members of community committees or groups. This has included the likes of Water Zone Committees, Community Boards,

Recreation groups such as the New Zealand Alpine Club, and some urban based groups that are associated with Christchurch and the earthquake recovery process. Board members are encouraged to attend community events, and report back to these at each meeting.

In May 2016 two members of the Board attended the Inc2 Conservation Conference in Dunedin, hosted by the Yellow Eyed Penguin Trust.

The following is an example of community meetings and events that have been attended by Board members, although not necessarily as a representative of the Board:

Board Member	Community Group
Teoti Jardine	Avon-Ōtākaro network Mahinga Kai Exemplar Project (see below) Volunteering Canterbury Trust Board Canterbury Poets Collective River of Flowers earthquake memorial Exhibition for 5th anniversary of earthquake “Bloom in the Museum “ Otautahi and Arowhenua Rūnaka Inc2 Conservation Conference, Dunedin
Robert Wynn-Williams	North Canterbury Branch, NZ Deerstalkers Association Christchurch West Melton Zone Committee Ministry for the Environment ‘Next step for fresh water’ presentation Christchurch Water Protection Zone Committee Christchurch Little River Rail Trail Trust
Sue McKenzie	Inc2 Conservation Conference, Dunedin
Helen Ivey	High Country Federated Farmers Conference, May 2016
Paula Smith	Restless Forest Opening, Life in Vacant Spaces Banks Peninsula Water Management Zone Committee Christchurch Replacement District Plan Independent Hearings Panel Environment Aotearoa Breakfast Panel Discussion Banks Peninsula Pest Management Liaison Committee Orton Bradley Park Board Ministry for the Environment ‘Next step for fresh water’ presentation
Joseph Hullen	Te Kōhaka o Tuhaitara Trust Matapopore Charitable Trust Ngai Tūāhuriri Rūnanga CERA Summer Series WORD Christchurch Writers Festival, Oratory on the Ōtākaro Kim Hill Radio NZ Saturday Morning Show U3A North Canterbury Ashley/Rakahuri Series
John Lewis	Te Hapu o Ngati Wheke (Rapaki) Ōtamahua/Quail Island Ecological Resoration Trust
Mick Abbott	Canterbury Water Management Strategy Regional committee meetings Biodiversity and Ecosystem Health Working Group Restless Forest Opening Life in Vacant Spaces



## Matariki Gardens

These gardens were planted during Matariki, 28 June 2014.

This represented the launch of the Mahinga Kai Exemplar and the first step in the greening of the residential red zone following the earthquakes of 2010/2011.

The fruit trees, berry bushes and raised beds comprise the community garden of Freeville School. The native plants were planted by members of the community and donated by the Department of Conservation with support from Christchurch City Council Park Ranger Service.

The Mahinga Kai Exemplar Project is jointly led by:

*empty breezes wander  
streets where the windows  
of silent houses gaze  
without any expectations  
there was no time  
for farewells only the  
hurried leavings come  
quickly don't turn back  
nothing is left here now*

*yet around abandoned  
playgrounds children's laughter  
lingers making an invitation  
to come plant grow picnic  
forage among the stories of  
those who stayed growing  
swimming sizzling roasting  
through sunshine rains and mist  
filling the breezes with hope*

Teoti Jardine 29/05/14

RE-ZONED

Care for the land. Care for the people. Care for the future.



## Conservation Board Award



The annual Canterbury Aoraki Conservation Board Award “Te Waka o Aoraki” is to be presented in October 2016.

The Board “Awards, Events and Appreciation” Committee have been working towards revamping the award process and format.

The award has been divided up into four separate categories:

- ❖ Conservation Award – celebrating restoration and biodiversity projects
- ❖ Recreation Award – celebrating projects that support outdoor recreation and adventure
- ❖ Young Kiwis Award – celebrating conservation and recreation projects led by Kiwis under 20
- ❖ Industry Award – celebrating business support and sponsorship of conservation and recreation in our community

At end of June 2016 advanced planning for the award was underway.

### District and Regional Councils

The Board has continued to develop a good relationship with councils. Councillors and district Mayors are invited to attend meetings and local issues often appear on the Board’s agenda. Paula Smith was appointed as Liaison for ECan and Territorial Authorities and attended meetings, perused public notices, and chaired the Land and Water Committee that wrote a series of submissions for the Board, on various plans, consents and reviews.

These included:

- Advice to Environment Canterbury (ECan) through submissions on the following:
  - Resource Consent Application for River Mouth Openings
  - Canterbury Regional Pest Management Plan Review
  - Benmore Irrigation Scheme
- Advice to the Mackenzie District Council through submission on the following:
  - Amended Plan Change 13

Helen Ivey was appointed Liaison with the Mackenzie District Council (MDC), after the Mayor of MDC attended a public luncheon gathering between the Board and community at Aoraki, in November 2015. This was a valuable networking exercise, and the Mayor is supportive of the approaches the Board is taking.

### Iwi

Ngāi Tahu nominates four members of the Board. They are individually selected by their Papatipu Rūnanga, and their status as representatives of local hapū is endorsed by Te Rūnanga o Ngāi Tahu.

Board minutes are circulated and conservation issues of concern feature regularly on meeting agenda of both organisations. Liaison representatives have been active in attending runanga meetings and updating the runanga on the work of the Board.

The Ngāi Tahu-nominated members of the board have formally met with both Te Rūnanga o Ngāi Tahu and Departmental staff with regards the draft Canterbury (Waitaha) CMS, and this has facilitated good discussion on appropriate content.

The Ngāi Tahu-nominated members of the board ensure a Ngāi Tahu perspective is considered before any final conclusions are reached.

A new initiative this year has the Iwi Committee which comprises the four Ngāi Tahu reps, meeting with TRONT representatives a week before each Board meeting to ensure good communication and input into topics the Board is dealing with.

A hui was held on February 11 2016 at Te Rūnanga o Ngāi Tahu House in Christchurch.

The following topics were covered:

- Who is Ngāi Tahu
- What is Ngāi Tahu doing nationally, tribally and regionally
- Combined areas of interest between TRONT and CACB
- Update on Aoraki/Mt Cook National Park Management Plan review and partnership and engagement with this
- Cultural Mapping programme
- Update on CMS and TRONT
- Stewardship Land reclassification and what that means to Ngai Tahu
- General korero

### **Non-governmental organisations**

The Board has continued to foster regular meetings with non-governmental organisations, when appropriate, and had a presentation from the Game Animal Council at their February meeting.

### **Community Conservation Partnership Fund**

This is a fund set up by the Department to help fund community groups to do conservation work. Dr Robert Wynn-Williams was the Canterbury representative on the committee set up to select suitable recipients.



Board members on a field trip, discussing with DOC staff the possible public usage of the historic Godley Heads buildings

## Appendix I – Canterbury Aoraki Conservation Board Annual Work Plan

### Canterbury Aoraki Conservation Board Work Programme Report on Progress 1 July 2015 – 30 June 2016

Colour	Indicates
Green	Completed
Yellow	Started and is ongoing
Red	Not started yet

#### Work Programme Overview

This Canterbury Aoraki Conservation Board work programme has been developed in response to the Letter of Expectation from the Associate Minister of Conservation dated 31 August 2015. It is structured in three parts, namely:

- Part A: Planned Board activities aimed at meeting the regional Work Programme contained in the letter:
  - Review/development/monitoring of statutory management plans including Conservation Management Strategies (CMS);
  - Advice relating to stewardship land;
  - Other statutory functions for the Board;
  - Advocacy
- Part B: Planned Board activities aimed at general expectations contained in the letter:
  - working with the Department;
  - taking account of the Ministerial priorities for the Department as contained in the Statement of Intent;
  - working with adjoining Boards and the NZCA;
  - understanding the Board's contribution to giving effect to the principles of the Treaty of Waitangi;
  - general engagement with the community, including raising the profile of the Board;
- Part C: risks/ issues from the Board's perspective, and opportunities for conservation growth that are not covered above.

**PART A: REGIONAL WORK PROGRAMME**

**1 Review / development of statutory management plans including Conservation Management Strategies (CMS) and National Park Plan Reviews**

**1.1 Board Objective:**

*The Board will review the Canterbury CMS draft and will recommend the approval of the draft by the NZCA with amendments by August 4<sup>th</sup> 2015*

**Planned Board Activities**

A	Chairperson to present Canterbury CMS to the NZCA on 4 August 2015
	<p><b>Progress:</b></p> <ul style="list-style-type: none"> <li>Completed August 4 2015</li> </ul>
B	If there are further amendments or discussion required, the Board will appoint a committee to deal with this, and then to bring back to the Board as a Committee of Whole to discuss and ratify
	<p><b>Progress:</b></p> <ul style="list-style-type: none"> <li>Sub-committee formed and have been meeting and have dealt with 170 comments received by CACB from NZCA</li> <li>CMS due to be signed off by NZCA</li> </ul>
C	The Board will proactively work with NZCA, Ngai Tahu and DOC to solve any outstanding issues or concerns, or wording changes required.
	<p><b>Progress:</b></p> <ul style="list-style-type: none"> <li>As above, plus this has been brought to the CACB formal meeting for ratification and close to getting agreement on the CMS</li> <li>Ngai Tahu text changes agreed to at the April meeting</li> </ul>

**1.2 Board Objective:**

*In conjunction with the Department, the Board will determine priorities for implementation of the approved Canterbury CMS*

**Planned Board Activities**

A	The Board will develop their own list of CMS priorities where they can assist the Department to implement the Canterbury CMS once approved (Appendix A)
	<p><b>Progress:</b></p> <ul style="list-style-type: none"> <li>Board members have been assigned to the various CMS milestones outlined in Appendix A</li> <li>Board Chair is setting up a system for DOC to report back on these</li> <li>CACB have requested DOC Champions to be identified to work with CACB Lead person</li> </ul>
B	Implement with the Department a traffic light system of reporting back to the Board on implementation of the CMS
	<p><b>Progress:</b></p> <p>Discussion has started on this.</p>
C	By the second Board meeting 2016, receive in-committee the department's indicative traffic light assessment of all CMS milestones
	<p><b>Progress:</b></p> <p>CMS only signed off in June 2016, so this hasn't started yet.</p>
D	The Department's official traffic light assessment of all CMS milestones to be presented to the Board at the first meeting of the 2016/17 financial year
	<p><b>Progress:</b></p> <p>Carried over to 2016/17</p>



### 1.3 Board Objective:

*In conjunction with the Department, the Board will commence a review of the Aoraki/Mount Cook National Park Management Plan*

#### Planned Board Activities

A	The Board will appoint a AMCNPMP Review committee
	<b>Progress:</b> <ul style="list-style-type: none"> <li>Appointed at November 27 2015 meeting</li> </ul>
B	The Board will actively work with Ngai Tahu and DOC to commence the plan review, so that the CMS National Parks Place milestone of completion of review of Aoraki/Mount Cook National Park Management Plan by Year 3 is met
	<b>Progress:</b> <ul style="list-style-type: none"> <li>Meetings have been held, and process has been agreed on.</li> <li>Discussion held at Ngai Tahu hui/workshop held with Board and TRONT 11 February 2016</li> <li>Further information and timeline on the Park Plan Review presented 15 April 2016 meeting</li> <li>Review of plan announced June 2016</li> </ul>

## 2 Stewardship Land

### 2.1 Board Objective:

*The Board will provide the Minister and Department with advice on priorities for reclassification of stewardship areas that require increased protection because of their significant conservation values*

#### Planned Board Activities

A	Respond to papers from the Department on reclassification of lands
	<b>Progress:</b> <ul style="list-style-type: none"> <li>Kaitorete Spit and addition to Ahuriri Conservation Park have been responded to, and agreed to change classification</li> </ul>
B	Work with the Department and Ngai Tahu to commence the land status review for all public conservation lands and waters within the Northern High-Country Place, including the St James Conservation Area in support of the relevant Year 3 CMS milestone
	<b>Progress:</b> <ul style="list-style-type: none"> <li>DOC have developed a 5-year plan and this is on agenda for February 2016 meeting</li> <li>Discussion held at Ngai Tahu hui/workshop held with Board and TRONT 11 February 2016</li> <li>Awaiting maps and lists from DOC</li> </ul>
C	Incorporate into field trips an overview of Stewardship Lands that could have their land status changed
	<b>Progress:</b> <ul style="list-style-type: none"> <li>Field trip of 25 November gained an overview of stewardship land allocated from Irishman Creek tenure review</li> </ul>
D	Invite the Minister of Conservation and Associate Minister of Conservation to tour St James Conservation Area
	<b>Progress:</b> <p>Topic has been raised with Associate Minister of Conservation in January 2016, by Board Chair</p>
E	Champion the values of the CMS to stakeholders to support the Mackenzie Trust's consideration of a Drylands Park
	<b>Progress:</b> <ul style="list-style-type: none"> <li>Field trip of November 25, viewed a fenced off drylands area on Balmoral Station, and discussed with farmer the concepts of a Drylands Park and alternate ways to achieve this.</li> <li>Also met with contractor who is providing support to the Mackenzie Agreement group, and gained background from him on the Mackenzie Agreement</li> <li>Board member appointed as liaison for the Mackenzie Agreement</li> </ul>

F	Undertake a field trip to the Mackenzie Basin to get a detailed understanding of the Drylands Park concept, the Mackenzie Agreement, implications for stakeholders, and ways the concept might be implemented
	<b>Progress:</b> <ul style="list-style-type: none"> <li>Field trip of November 25 and 26 covered off all of these concepts and implications</li> </ul>

### 3 Other statutory functions<sup>1</sup>

#### 3.1 Board Objective:

*The Board will nurture ongoing working relationships with Fish and Game Councils regarding issues of mutual interest within the region*

#### Planned Board Activities

A	Appoint a liaison person to actively engage with the local Fish and Game councils in the region
	<b>Progress:</b> <ul style="list-style-type: none"> <li>Bruce Rule appointed</li> </ul>
B	Report back to the Board on any issues of mutual issues that need to be explored
	<b>Progress:</b> <ul style="list-style-type: none"> <li>New Fish and Game (North Canterbury) Chair has expressed interest in working with Board and Department on changes to Whitebait Fisheries legislation</li> <li>Briefing from Geoff Kerr, NZ Game Animal Council at 11 February hui</li> <li>Bruce Rule meets regularly with F &amp; G Chair to discuss any mutual issues</li> </ul>

#### 3.2 Board Objective:

*The Board will advise on proposed changes of status for nationally and internationally important areas, when sought by the Department*

#### Planned Board Activities

A	Work with the Department to achieve the CMS Milestone for Braided Rivers Place – a World Heritage Area or Wetland of International Importance achieved for at least one Canterbury braided river by Year 10
	<b>Progress:</b> Not commenced as CMS only signed off in June 2016 – will carry into 2016/17 year
B	Respond to requests and papers from the Department with advice on any proposed changes of status for nationally and internationally important areas.
	<b>Progress:</b> Change of status for land in Ahuriri and Kaitorete Spit

<sup>1</sup> This section should include Board functions relating to statutory functions under section 6M of the Conservation Act

## 4 Advocacy

### 4.1 Board Objective

*The Board will pursue all reasonable opportunities to advocate at public forums and in any statutory planning processes*

#### Planned Board Activities

A	Appoint a Land and Water committee to ensure government agencies and planning processes receive relevant submissions from the board
	<p><b>Progress:</b></p> <ul style="list-style-type: none"> <li>• Appointed at November 27 meeting</li> <li>• Submissions put in on:             <ul style="list-style-type: none"> <li>○ Plan Change 13, Mackenzie District Council</li> <li>○ MOI State of Environment Report</li> <li>○ Submission on ECan Canterbury Regional Pest Management Plan Review</li> <li>○ Submission on Benmore Irrigation Scheme</li> <li>○ Submission on Next Steps for Fresh Water Discussion Document</li> </ul> </li> </ul>
B	That representatives from this committee will advocate at public forums if required
	<p><b>Progress:</b></p> <p>No advocacy at public forums required this year</p>
C	Work with the Department in developing submissions, so that they are aligned
	<p><b>Progress:</b></p> <ul style="list-style-type: none"> <li>• Have set up DOC contact for Chair of Land and Water committee</li> <li>• DOC submissions have been made available to the Committee</li> </ul>
D	Work with the Department to receive a Planning report for each Board meeting, so that the committees can be informed on departmental submissions and work in the statutory planning process
	<p><b>Progress:</b></p> <ul style="list-style-type: none"> <li>• Reports are being received each meeting and are a valuable source of information</li> </ul>
E	Appoint liaison roles as appropriate
	<p><b>Progress:</b></p> <ul style="list-style-type: none"> <li>• Liaison roles appointed are:             <ul style="list-style-type: none"> <li>○ Neighbouring Conservation Boards – Robert Wynn-Williams</li> <li>○ Tahr Interest Group – Helen Ivey</li> <li>○ Himalayan Tahr Control Plan Implementation Group – Helen Ivey</li> <li>○ Mackenzie District Council – Helen Ivey</li> <li>○ Wilding Conifer Strategy – Helen Ivey</li> <li>○ Deerstalkers Groups – Robert Wynn-Williams</li> <li>○ Game Animal Council – Robert Wynn-Williams</li> <li>○ ECan and Territorial Authorities – Paula Smith</li> <li>○ Avon Otako Group – Teoti Jardine</li> <li>○ New Zealand Conservation Authority – Mick Abbott</li> <li>○ Recreation Groups – Sam Newton</li> </ul> </li> </ul>

**PART B: GENERAL EXPECTATIONS**

**5 Working with the Department**

**Board Objective:**

*Board members will maintain good working relationships and open dialogue with Directors, Managers and Board Support Officers in order to engage strategically in conservation for the region*

**Planned Board Activities**

<b>A</b>	Board Chair will meet periodically with the Director Operations to ensure all are engaged to support conservation in the region
	<p><b>Progress:</b></p> <ul style="list-style-type: none"> <li>• Board Chair meeting at least monthly, meetings are proving invaluable</li> </ul>
<b>B</b>	Board field trips will be aligned with the Annual Work Plan and any conservation topics that the Department considers the Board should be further briefed on
	<p><b>Progress:</b></p> <ul style="list-style-type: none"> <li>• Field trips held:             <ul style="list-style-type: none"> <li>○ Te Waihora Living Water Programme focussing on Ararira/LII catchment – September 10, 2015</li> <li>○ Mackenzie Basin – Mackenzie Agreement, Wilding Conifer Strategy, Drylands Park concept, Tenure Review outcomes, Intensification of farming – November 25, 2015</li> <li>○ Aoraki/Mount Cook National Park – Management plan review issues, use of park, concessions, car-parking, campground, viewing of Glentanner Scenic Reserve as possible addition to park – November 26, 2015</li> <li>○ Field trip/hui held at TRONT to discuss various topics of interest</li> <li>○ Kura Tawhiti visit 14 April 2016 to view bolting, car-parking, natural and cultural history of area, visitor usage.</li> <li>○ Same field trip looked at recreational usage of Waimakariri Basin, WELRA and Wilding pines, redevelopment of Lake Pearson camp ground</li> <li>○ Historic Field Trip to Godley Head, Ripapa and Quail Island to view both historic and cultural values of these areas</li> </ul> </li> </ul>
<b>C</b>	The Board will work with the Department to ensure Board members are briefed on any areas where they require a better understanding of the departments work. This will involve briefings at Board meetings
	<p><b>Progress:</b></p> <ul style="list-style-type: none"> <li>• Briefings held on:             <ul style="list-style-type: none"> <li>○ Visitor Monitoring trial at Aoraki, Jeff Dalley – September 11, 2015</li> <li>○ Wallaby Control, Scott Theobald – November 27 2015</li> <li>○ Conservation Dogs, Scott Theobald – November 27, 2015</li> <li>○ Eastern South Island Operations area structure, Andy Roberts – November 27, 2015</li> <li>○ Evaluation of DOC’s conservation in the City projects – Stephen Espiner and Emma Stewart (Lincoln University)</li> </ul> </li> </ul>
<b>D</b>	Board Chair and Support Officers to attend relevant Conservation Board Regional meetings where planned
	<p><b>Progress:</b></p> <ul style="list-style-type: none"> <li>• Phone conference held November 25, 2015</li> <li>• No further regional meetings are planned, as the three boards are now serviced by a different structure</li> </ul>



E	Board Chair to attend where possible relevant NZCA and Conservation Board conferences and workshops
	<b>Progress:</b> <ul style="list-style-type: none"> <li>• Conference attended by Mick Abbott, September 24, 2015</li> </ul>

## 6 Taking account of Ministerial priorities for the Department<sup>2</sup>

### Board Objective:

*The Board will identify opportunities to support the relevant areas of work in the Canterbury rohe, as identified in the Ministers Letter of Expectation.*

### These are:

- *Battle for the Birds*
- *War on Weeds*
- *Nature Watch*
- *DOC Science Strategy*
- *Christchurch Visitor Centre and regional office relocation*
- *Mackenzie Agreement*

### Planned Board Activities

A	Board to work with the Department in receiving updates on the above areas of work and key current operational issues including those that relate to biodiversity, recreational and management
	<b>Progress:</b> <ul style="list-style-type: none"> <li>• Field trip of November 25, 2015 – looked at Mackenzie Agreement and Wilding Pine Strategy</li> <li>• Field trip of April 14 2016 – looked at Wilding Pine Strategy in the Waimakariri Basin</li> </ul>
B	Board to undertake a field trip to familiarise themselves with the Wilding Conifer Management Strategy 2015-2013 and the Mackenzie Agreement in November 2015
	<b>Progress:</b> <ul style="list-style-type: none"> <li>• Undertaken November 25, 2015</li> </ul>
C	Board to advocate where they can with interest groups on any of the above topics
	<b>Progress:</b> <ul style="list-style-type: none"> <li>• Liaison appointed for Mackenzie Agreement and Wilding Pine Strategy</li> <li>• Board viewed WELRA work at Waimakariri Basin with regards to Wilding Pines</li> </ul>

## 7 Working with adjoining Boards and the NZCA

### Board Objective:

*Board members will liaise with neighbouring conservation boards in order to progress cross boundary CMS issues and other matters of mutual interest*

### Planned Board Activities

A	Board to appoint a liaison member for neighbouring Conservation Boards to actively follow minutes and any identified common issues
	<b>Progress:</b> <ul style="list-style-type: none"> <li>• Appointed November 27, 2015 meeting – Robert Wynn-Williams</li> <li>• Robert is reporting back at each meeting on any shared issues</li> </ul>

<sup>2</sup> This section could include where Boards are consulted on pest control operations

B	Board Chairs to attend relevant regional meetings of Board Chairs so cross boundary CMS and other issues can be progressed
	<b>Progress:</b> <ul style="list-style-type: none"> <li>• Phone conference meeting November 25, 2015</li> <li>• No further regional meetings are planned</li> </ul>

## 8 Understanding the Board's contribution to giving effect to the principles of the Treaty of Waitangi

### Board Objective:

*The Board will understand and support the Board's and Department's obligations under Treaty settlements as well as principles under section 4 of the Conservation Act*

### Planned Board Activities

A	Iwi Committee appointed
	<b>Progress:</b> <ul style="list-style-type: none"> <li>• Iwi committee appointed September 11 meeting – all the Ngai Tahu appointed reps</li> </ul>
B	Iwi committee members to ensure TRONT and runaka are briefed and consulted on matters that the Board deem appropriate
	<b>Progress:</b> <ul style="list-style-type: none"> <li>• Committee members meet regularly with TRONT</li> <li>• Briefing for CACB by TRONT departments held at a hui at TRONT, February 2016</li> <li>• Committee now meet one week prior to Board meetings to be briefed on any upcoming issues</li> </ul>
C	Iwi committee members to report back at each Board meeting on liaison and any issues that the Board should be aware of
	<b>Progress:</b> <p>Commenced as from 15 April 2016 meeting, as iwi committee are now meeting with TRONT prior to each Board meeting to discuss joint issues</p>
D	The Board will seek to have at least one meeting each year at a marae
	<b>Progress:</b> <p>Meeting held at TRONT office 11/12 February, 2016</p>

## 9 Engaging with the community, including raising the profile of the Board

### 9.1 Board Objective

*Board members will liaise regularly with other conservation entities, such as district and regional councils, NGOs and community groups, in order to enhance the profile of the Board and pursue good working relationships on issues of mutual interest and concern*

### Planned Board Activities

A	Board committees to set goals to achieve the objective above at the November 2015 meeting
	<b>Progress:</b> <ul style="list-style-type: none"> <li>• Goals received from some committees</li> </ul>

## 9.2 Board Objective:

*Board members will take the initiative to meet with community groups and the general public to gauge community reaction to conservation initiatives planned or implemented by DOC*

### Planned Board Activities

A	Board to ensure a minimum of 20 community, industry, conservation and/recreation groups are engaged with the activities and role of the conservation board in 2015/16
	<b>Progress:</b> <ul style="list-style-type: none"><li>• Community meeting/luncheon held at Aoraki/Mount Cook November 26, 2015</li><li>• Liaison for Mackenzie District Council appointed from this</li></ul>
B	Board will partner with the Department to establish and host a high profile annual event in September 2016 to acknowledge and celebrate efforts by conservation, recreation, school and industry groups to further conservation values and outcomes in the Canterbury Aoraki rohe
	<b>Progress:</b> <ul style="list-style-type: none"><li>• Committee formed to plan this 27 November, 2015. Discussion held at February and April and June 2016 CACB meetings</li><li>• Planning still in progress – carried over to 2016/17 year</li></ul>

## PART C: RISKS AND OPPORTUNITIES

### 10 Risks from the Board's perspective

A	That the public in general does not yet have sufficient knowledge of what the role and activities of Conservation Boards are, and what they stand for
B	That the Board does not effectively prioritise it's activities, outcomes and resources

### 11 Opportunities for conservation growth

A	The Board will establish an awards committee to acknowledge excellence, breadth and range of conservation work, being done in the Canterbury rohe
	<b>Progress:</b> <ul style="list-style-type: none"><li>• Awards committee appointed at meeting of 27 November, 2015</li></ul>
B	Board members to actively engage with recreational, conservation, educational or communities of interest to encourage a greater sense of involvement of their rohe and encourage up to five groups to either adopt either a hut or track, or a particular area in which they can make a difference (e.g. trapping etc)
	<b>Progress:</b> Discussion held at 12 February meeting on huts and ways groups can be involved



<b>Ref</b>	<b>CMS Reference and Milestone</b>	<b>Person Responsible</b>
<b>1</b>	<b>1.4 Treaty partnership with Ngāi Tahu</b> Agreed systems and processes to monitor and measure Treaty engagement and satisfaction of Ngāi Tahu with Department activities. (By Year 3)	<b>Teoti Jardine and Peggy Burrows</b>
<b>2</b>	<b>1.5.1 Natural Heritage</b> A baseline report assessing the condition of priority ecosystem units. (By Year 3)	<b>Sue McKenzie</b>
<b>3</b>	<b>1.5.1 Natural Heritage</b> Sustained control of wilding trees within the high country in accordance with the New Zealand Wilding Conifer Management Strategy 2015-2030. (By Year 5)	<b>Helen Ivey</b>
<b>4</b>	<b>1.5.2 Historic and cultural heritage</b> A baseline report assessing the condition of actively conserved historic places listed in Appendix 10 that are stable and not deteriorating, and including the identification of Ngāi Tahu values and relevant community partnerships. (By Year 3)	<b>Paula Smith</b>
<b>5</b>	<b>1.5.3 Recreation</b> A baseline report assessing the number and condition of huts, tracks and other visitor facility structures, the numbers and the satisfaction of people using them, and the opportunities for recreational groups to assist in their management and retention. (By Year 3)	<b>Sam Newton</b>
<b>6</b>	<b>1.5.3 Recreation</b> An increase in the number of huts and tracks that have recreational groups assisting in their management and retention. (By Year 5)	<b>Sam Newton Peggy Burrows</b>
<b>7</b>	<b>2.1 National Parks Place</b> Completion of review of Aoraki/Mount Cook National Park Management Plan. (By Year 3)	<b>Mick Abbott (Chair of Review Committee)</b>
<b>8</b>	<b>2.3 Northern High-Country Place</b>  Land status review for all public conservation lands and waters within the Place, including the St James Conservation Area. (By Year 3)	<b>John Lewis</b>
<b>9</b>	<b>2.3 Northern High-Country Place</b> Resolution of the boundaries and statutory provisions for an area where recreational hunting will be given priority for wild animal control. (By Year 3)	<b>Robert Wynn-Williams</b>
<b>10</b>	<b>2.4 High-Country Basins Place</b> Monitoring results of visitor use and impacts on natural, historic and Ngāi Tahu cultural values at Kura Tāwhiti Scenic Reserve. (By Year 5)	<b>Joseph Hullen</b>
<b>11</b>	<b>2.6 Braided Rivers / Ki Uta Ki Tai Place</b> World Heritage Area or Wetland of International Importance achieved for at least one Canterbury braided river. (By Year 10)	<b>Bruce Rule Te Awhina Arahanga</b>