

Canterbury Aoraki Conservation Board

Annual Report 2018-2019



Canterbury Aoraki Conservation Board Te Rūnanga Papa Atawhai o Waitaha me Aoraki

Annual Report 2018-2019

**Presented to the New Zealand Conservation Authority
pursuant to Section 6 (O) of the Conservation Act 1987**

This report is presented to the New Zealand Conservation Authority as required by the Conservation Act 1987 and distributed to interested parties. Members of the public are welcome to attend conservation board meetings. If you would like more information on the Canterbury Aoraki Conservation Board please see the website www.conservationboards.org.nz or contact the board support officer, at the Department of Conservation in Christchurch, Ph: 027 5416663 or Email: canterburyaorakiboard@doc.govt.nz

Published by
Canterbury Aoraki Conservation Board
c/- Department of Conservation
Private Bag 4715
Christchurch Mail Centre
CHRISTCHURCH, 8140

ISSN 1179-2469 (print)
DOC-6004728

Photograph Front Cover:
Rangitata River Valley (*M-L Grandiek, 2018*)

CONTENTS

1.	Chairperson's Report	5
2.	Introduction	8
3.	Conservation Board Region	9
3.1	Conservation features of the area	11
4.	Board Functioning	12
4.1	Board functions under Section 6M of the Conservation Act 1987	12
4.2	Powers of the Board under Section 6N of the Conservation Act 1987	12
4.3	Board functions under Section 30 of the National Parks Act 1980	12
4.4	Board Membership	13
4.5	Members Profiles	13
4.6	Board Meetings	15
4.7	Attendance	16
4.8	Field Trips and Site Inspections	17
4.9	Board Committees	21
4.10	Training for Members	21
4.11	Department Involvement in Board Meetings	21
4.12	Special Events	22
4.13	Annual Work Plan	23
5.	Statutory Activity	23
5.1	Canterbury (Waitaha) Conservation Management Strategy (CMS)	23
	Implementation Monitoring	23
5.2	Management Plans	23
6.	Advice and Advocacy	25
6.1	Other Conservation Boards Liaison	25
6.2	New Zealand Conservation Authority Liaison	26
6.3	Department Advice	26
6.4	Community Advocacy and Involvement	27
6.5	Community Visibility	27
6.6	District and Regional Council Advocacy and Advice	27
7.	Acknowledgements	28
	Appendix I: Annual Work Plan	29

1. Chairperson's report

Tena koe,

The Canterbury Aoraki Conservation has had a productive year in its work furthering conservation outcomes. In part, this has been aided by the recently reinstated practice of receiving annual reporting on the implementation of current National Park Management Plans within our rohe. This has been supplemented by our demands for more stringent operations reporting by the Department. In addition, the Board has benefited from being exposed to and briefed on the Eastern South Island Annual Business Plan. The Board has expressed a desire for that briefing to continue on an annual basis.



Aoraki Mount Cook National Park Management Plan

The year began with the Board expressing its dissatisfaction with the Draft Plan in the way it dealt with the Aoraki Mount Cook Village aspect. While only a small part of the National Park, it is by far the most visited and has come under enormous pressure from tourism. As a result, the departmental planners commissioned a spatial plan to be developed and incorporated. This resulted in some novel and challenging solutions being proposed, including a 'park and ride' system. The draft Management Plan was notified on 9 September 2018 and rightly generated keen interest for numerous stakeholders. It was with a degree of frustration but ultimately understanding, that the Board was informed that the planning process would be suspended due to a Supreme Court decision which has forced the department to rethink its planning. The Board is acutely aware that the existing Management Plan is extremely dated, but still operative until a new Management Plan is finalised.

Crown Pastoral Lease Land

Over the last year, the Board has become increasingly informed and concerned about issues relating to the management of Crown Pastoral Lease land. While not managed by the department, it is often either adjacent to or surrounded by Public Conservation Land and is an important part of the broader conservation picture. The Board requested and received a briefing from LINZ on its concerns. These concerns centred on our opinion that LINZ processes do not seem to take into consideration the downstream or cumulative effects of grazing licences, the monitoring of licence conditions and the enforcement of licence conditions. The Board was pleased to note that the Minister triggered a review of the Crown Pastoral Land lease system and took the opportunity to submit its views to the formal consultation process.

Stewardship land status of St. James and Poplars Conservation Areas.

The Board has maintained its consistent and vocal advocacy for the reclassification of the St. James into a category that affords more protection and mana than Stewardship Land. The Board considers this area a particularly special area of Conservation Land and will continue to apply pressure. Recognising that the future management of Molesworth is also being reviewed, the Board requested the management of both areas should be aligned. We have made the commitment to work with our counterpart Nelson-Marlborough Conservation Board on this matter in the future.

Ski fields on Public Conservation Land

Reflecting its long-standing interest in this area, the Board requested and received two reports from the Department on the concession arrangements of ski fields within the rohe. As a result of observations on various field trips and by way of Operations reports over several years, the Board has become concerned with the environmental impact of Ski fields on public conservation land and in the context of climate change, the risks to the department of marginal ski fields being abandoned. The Board only needs to look north, to the abandoned Mt Roberts ski field in the Nelson Lakes National Park, to see the significant landscape modification that has occurred in a similar instance.

Himalayan Tahr Management

It was with great concern that the Board was informed that the Tahr population and range on Public Conservation Land had greatly exceeded the limits set out in the Himalayan Tahr Control Plan. Members of the Board have been involved in numerous meetings and hui on this issue and the resulting control plans proposed by the Department. Fulfilling its role to monitor and defend the implementation of any statutory plan, the Board has encouraged the Department to make every effort to return the Tahr population to the 10,000 head limit as outlined in the Control Plan.

In the latter half of the year, the Board's attention centred on properties adjacent to public conservation land, especially Crown Pastoral Lease land managed by LINZ. The Board is not yet satisfied that Tahr control on this type of land is carried out to the extent that operations conducted on Public Conservation Land will be long-lasting.

The Mackenzie Basin

The Board was delighted by the launch in November 2018 of the Te Manahuna Aoraki project and gained a deeper understanding of its scope and depth on a subsequent fieldtrip. The Board has lent its support to this project, the Mackenzie Basin Alignment Programme and continues to champion the establishment of a Drylands Park in the Mackenzie Basin. The Board has been a vigorous supporter of those who feel that the pressures of the burgeoning tourism industry have placed a considerable burden on the Conservation estate, the Department that manages it and the ordinary people who enjoy it.

Board Awards

In October, the Board held its annual Conservation Awards – an event unique to our Board. It was a pleasure to present the Canterbury Aoraki Conservation Board Award and \$3,000 prize money to 'Squawk Squad' – a brilliant social enterprise that connects and engages rangatahi to the kaupapa of protecting native birds. The Board thanks the Isaac Conservation and Wildlife Trust for its sponsorship of the event.

Farewell

After two terms, my time on the Canterbury Aoraki Conservation Board has come to an end. When I was much younger, while tramping and climbing on public conservation land, I often used to wonder about how the Department of Conservation made decisions and allocated scarce resources. Unlike private enterprises or even a singularly focussed government department, it seemed to me that the Department faced a complex set of choices. How to compare maintaining a track vs incubating eggs of endangered species? Controlling predators vs. providing signage for visitors? The department has numerous divergent priorities and faces endless opportunity costs.

After two terms on the Board, I have been fortunate enough to gain a deep understanding and appreciation for that complexity. My key learning is that indeed, carrying out Conservation in New Zealand is a deeply difficult task, but the people who take it on are incredibly motivated and absolutely underappreciated. My admiration for the staff and volunteers who work, day by day, on solving some of New Zealand's most challenging problems, is immense.

I would like to thank the many dedicated colleagues, both past and present, that I have served alongside. It has been a privilege to interact with such dedicated and passionate advocates of Conservation.

I would also like to thank the Departmental staff that have served and reported to the Board. The commitment and expertise of the staff, displayed in often difficult circumstances, is an inspiration.



Sam Newton, Chairperson
Canterbury Aoraki Conservation Board
Te Rūnanga Papa Atawhai o Waitaha me Aoraki

2. Introduction

This is the 21st Conservation Board Annual Report. Section 6(O) of the Conservation Act requires conservation boards to provide the New Zealand Conservation Authority (the Authority) with an annual report as soon as practical after 30 June each year. In recognition of this requirement the Canterbury Aoraki Conservation Board submits this annual report.

Conservation boards are appointed by the Minister of Conservation under section 6(P) of the Conservation Act 1987. Board functions are outlined in section 6(M) and the powers, which enable the conservation boards to carry out those functions, are under 6(N) of the Act.

Conservation boards are independent advisory bodies, established by statute. They represent the community and offer interaction between communities and the Department of Conservation (the Department), within their area of jurisdiction.

Conservation boards have several statutory roles under various Acts including:

- the recommendation of the Canterbury (Waitaha) Conservation Management Strategy (CMS) to the Authority for approval
- advising the Department and the Authority on how conservation management strategies and plans will be put into practice
- reporting on the implementation of the CMS
- the approval of conservation management plans
- the recommendation of national park management plans to the Authority for approval
- advising the Department and Authority on conservation matters, and proposed changes to status of land of national and international significance
- liaising with the regional Fish and Game Council on conservation matters
- carrying out other powers delegated by the Minister of Conservation, the Conservation Act or any other Act.

Conservation boards also have several functions under section 30 of the National Parks Act 1980. These functions include recommending the review or amendment of national park management plans and recommending approval of these plans by the Authority.

3. Conservation board region

The Canterbury Aoraki Conservation Board's area of jurisdiction extends from the Conway and Clarence Rivers in the north and west to the main divide, including all of Arthur's Pass and Aoraki Mount Cook National Parks.

The southern boundary is the catchment of the Waitaki River at Kurow, along the river to the east coast. The area also extends out to the 12-nautical mile limit with respect to coastal and marine issues, and out to the 200-nautical mile limit, with respect to protected species.

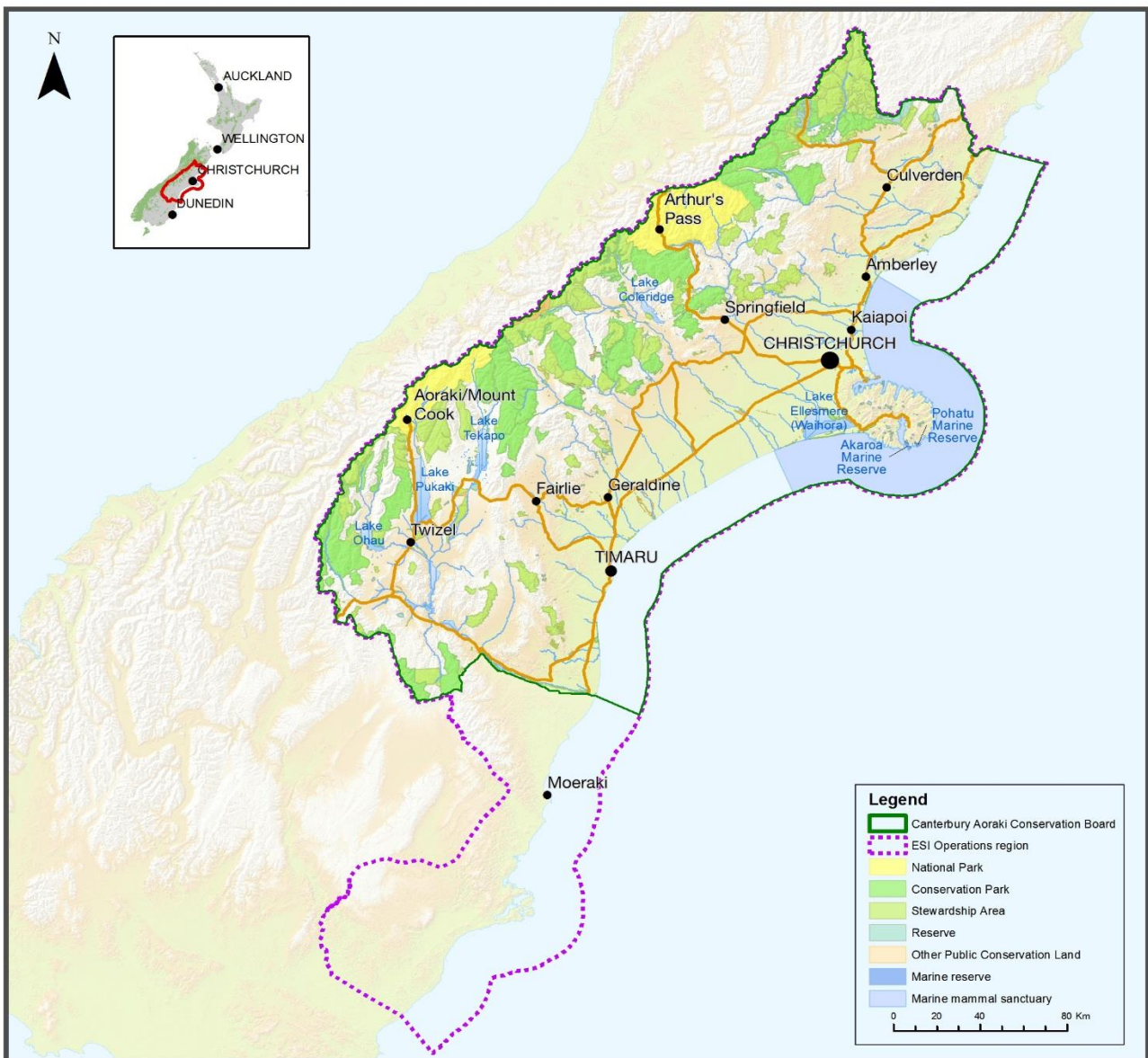


Figure 1. Canterbury Aoraki Conservation Board Jurisdiction

FREQUENCY	Section	Recorded Area Hectares
1285	s.17 - Recreation Reserve	15657.52
1	s.20 - Wilderness Area	7171.25
2	s.27 - Recreational Hunting Area	65929.02
1	s.11 – Te Rohe o Te Whānau Puha Whale Sanctuary	74085.20
1	s.13 - National Reserve	6035.19
17	s.14 - Wildlife Refuge	21876.17
1	s.15 - Amenities Area	73.76
6	s.16(11) - Recreation Reserve (Racecourse)	345.99
1	s.176(1)(a) - Unoccupied Crown Land	0.16
43	s.18 - Historic Reserve	366.95
2	s.18 - Specially Protected Area	30.34
186	s.19(1)(a) - Scenic Reserve	36327.86
2	s.19(1)(b) - Scenic Reserve	487.00
12	s.19 - Conservation Park	481445.23
9	s.20 - Nature Reserve	990.67
5	s.21 - Ecological Area	8576.74
21	s.21 - Scientific Reserve	2048.09
81	s.22 - Government Purpose Reserve	4568.15
1	s.22 - Marine Mammal Sanctuaries	406620.83
2597	s.23 - Local Purpose Reserve	37535.52
243	s.24(1) & (2) - Moveable Marginal Strip	5161.64
416	s.24(3) - Fixed Marginal Strip	4823.03
657	s.25 - Stewardship Area	448733.25
2	s.3 - Marine Reserve	746.35
3	s.4 - National Park	190821.01
1	Land held for a Government Work is required for another Government Work	71.22
1	s.7 - Conservation Purposes	444.42
1	s.9 - Wildlife Sanctuary	0.94
34	sch.4 - Land to Which Access Restrictions Apply	201514.60

3.1 Conservation features of the area

The main features of Public Conservation Land and Waters within the Board's boundaries are:

- Two national parks – Aoraki Mount Cook and Arthur's Pass.
- Part of a national reserve – Lewis Pass Scenic Reserve
- Eight conservation parks – Craigieburn, Lake Sumner, Hanmer, Ahuriri, Korowai/Torlesse Tussocklands, Ruataniwha, Hakatere and Te Kahui Kaupeka. *The conservation board boundary also includes part of Hāwea and Oteake Conservation Parks.*
- Hurunui, Hawdon and Poulter predator-controlled areas (formerly part of Operation Ark). *Currently under extensive predator control using 1080 operations and ground trapping primarily to protect the Orange-Fronted Parakeet populations in this area.*
- Two marine reserves – Pōhatu and Akaroa
- One marine mammal sanctuary – Banks Peninsula
- A large number of scenic, historic, scientific, nature and other reserves and conservation areas, including 438 stewardship areas.
- The DOC managed portion of Te Waihora/Lake Ellesmere

The Canterbury region directly administers 2,022,488 hectares of Public Conservation Area. This consists of:

- Public Conservation Land: 1,615,121 hectares
- Banks Peninsula Marine Mammal Sanctuary: 406,621 hectares
- Pōhatu and Akaroa Marine Reserves: 746 hectares

4. Board functioning

4.1 Board functions under section 6m of the Conservation Act 1987

The functions of the Board are:

- 1) To recommend the approval by the Authority of conservation management strategies, and the review and amendment of such strategies, under the relevant enactments
- 2) To approve conservation management plans, and the review and amendment of such plans, under the relevant enactments
- 3) To advise the Authority and the Director-General on the implementation of conservation management strategies and conservation management plans for the area within the jurisdiction of the Board
- 4) To advise the Authority or the Director-General
- 5) On any proposed change of status or classification of any area of national or international importance; and
- 6) On any other conservation matter relating to any area with the jurisdiction of the Board
- 7) To liaise with any Fish and Game Council on matter within the jurisdiction of the Board
- 8) To exercise such powers and functions as may be delegated to it by the Minister under this Act or any other Act

4.2 Powers of the Board under section 6n of the Conservation Act 1987

- 1) Every conservation board shall have all such powers as are reasonably necessary or expedient to enable it to carry out its functions.
- 2) Without limiting the generality of subsection (1), each conservation board may -
 - a) Advocate its interests at any public forum or in any statutory planning process; and
 - b) Appoint committees of members and other suitable persons, and delegate to them functions and powers.
- 3) The power conferred by subsection (2)(a) shall include the right to appear before courts and tribunals in New Zealand and be heard on matters affecting or relating to the Board's functions.

4.3 Board Functions under section 30 the National Parks Act 1980

- 1) to recommend management plans, and the review or amendment of such plans, for parks within the jurisdiction of the Board in accordance with sections 45 to 47:
- 2) to consider and determine priorities for the implementation of management plans for national parks:
- 3) to make recommendations to the Minister for the appointment of honorary rangers under section 40:
- 4) to review and report to the Director-General or the Authority, as appropriate, on the effectiveness of the administration of the general policies for national parks within the jurisdiction of the Board:
- 5) to give advice to the Director-General or the Authority—
 - i. on the interpretation of any management plan for a park; and
 - ii. on any proposal for the addition of land to any national park or the establishment of a new national park; and
 - iii. on any other matter relating to any national park, - within the jurisdiction of the Board.

4.4 Board membership

There were 12 Board members for the reporting year appointed by the Minister of Conservation. Sam Newton was elected Chairperson and Dr Robert Wynn-Williams was elected Deputy Chairperson.

The following table lists the membership of the Board between 1 July 2018 and 30 June 2019 and their term of office.

Table A: Board membership

Board member	Area	Term start	Term end
Te Awhina Arahanga*	Christchurch	07/04/16	30/06/20
Bethany Baker	Christchurch	01/07/18	30/06/21
Yvette Couch-Lewis*	Lyttelton	01/07/17	30/06/19
Joseph Hullen*	Kaiapoi	01/09/07	30/06/19
Helen Ivey	Aoraki Mount Cook	01/07/14	30/06/20
Sam Newton	Christchurch	01/05/14	30/06/19
Joy Paterson	Twizel	01/07/16	30/06/19
Dr Heather Purdie	Christchurch	01/07/18	30/06/21
Paula Smith	Banks Peninsula	01/05/14	30/06/19
Sophie Smith	Christchurch	01/07/17	30/06/20
Dr Benita Wakefield*	Christchurch	01/07/18	30/06/21
Dr Robert Wynn-Williams	Christchurch	01/07/14	30/06/20
<i>*Te Rūnanga o Ngāi Tahu appointee</i>			

4.5 Members profiles

Sam Newton (Chairperson)

Sam is the Advocacy Manager at the New Zealand Recreation Association.

He has worked in many high-profile roles, including as a parliamentary advisor and General Manager of the New Zealand Alpine Club. He serves on the executive of New Zealand Mountain Safety Council and is a trustee of the Graham Dingle Foundation.

Dr Robert Wynn-Williams (Deputy Chairperson)

Dr Wynn-Williams is a self-employed agribusiness and technology consultant, and a part-time cycle guide.

He is a professional agriculturalist with experience in land management options and consensus building. He is currently a community member on the Christchurch West Melton Zone Water Management Committee and a trustee of the Christchurch Little River Rail Trail.

Te Awhina Arahanga

Te Awhina is a museum consultant specialising in exhibition design and curation, writer and researcher, social and cultural historian.

Te Awhina has an interest in biota or interconnection of whakapapa within species to the land, sea and air space, especially the realm of Te Aitanga Pepeke and the 'not so cute' endangered species.

Bethany Baker

Bethany has a Bachelors' degree in Geography and is a full-time master's student studying Natural Resources Management and Ecological Engineering at Lincoln University.

Bethany has a strong conservation and environmental ethos, and this is reflected in the numerous roles she has on university committees and community groups in that space.

Yvette Couch-Lewis

Mrs Couch-Lewis is a Te Rūnanga o Ngāi Tahu nominee.

As well as her directorships, she has represented Ngāi Tahu on several different boards, and has experience working with stakeholders for Te Hapū o Ngāti Wheke.

Joseph Hullen

Mr Hullen is a nominee of Te Rūnanga o Ngāi Tahu. He is Chairperson of Te Roopu o Tane Mahuta Trust and is employed by Te Rūnanga o Ngāi Tahu as Kaiwhiri Rēhita Whakapapa/Whakapapa Registration Advisor.

He is on an advisory board of Central Plains Water as well as several other groups. He is of Ngai Tahu iwi.

Helen Ivey

Mrs Ivey is a shareholder/director of Glentanner Station, which has recently been through the tenure review process.

Her farming and tourism business operate adjacent to Aoraki/Mount Cook National Park. She has very strong conservation beliefs because of her vicinity to the Park.

Joy Paterson

Ms Paterson has been a secondary school Principal, a General Manager of several large corporates and a management consultant.

Joy has served on the High-Country Medical Trust, a member of the Aoraki Mackenzie Dark Sky Board and the Lottery Committee for Individuals with Disabilities. Recently she has been appointed to the Upper Waitaki Water Zone Committee and Line Trust South Canterbury. She is a Justice of the Peace.

Dr Heather Purdie

Dr Purdie is a Senior Lecturer in Physical Geography and Glaciology at the University of Canterbury.

Heather has 13 years' experience in conducting research into New Zealand glaciers and their response to climate change, and the implications of environmental change to commercial tourism concessions and recreational activities on conservation land. She is a scientific advisor for the DOC Learning Experiences Outside the Classroom (EOTC) programme at Aoraki Mount Cook.

Paula Smith

Ms Smith has a background in Landscape Architecture and Plant Ecology.

She has a sound understanding of public and legislative processes and is a certified RMA Commissioner. She has expertise in land and environment management, policy and planning, advocacy, and consensus building.

Sophie Smith

Sophie graduated from the University of Canterbury with a Bachelor of Arts majoring in Geography and Art History. While studying she worked on projects such as DOC's 'Growing Voices' and found a passion for conservation and the outdoors.

In her current role at Narrative Campaigns, she works on campaign design and management, communications strategies and event management for Canterbury-based and focussed organisations to strengthen their communications and voice. A large focus of Sophie's role over the past two years has been 'growing communities' through online marketing and coordination of large events.

Dr Benita Wakefield

Dr Wakefield is a nominee of Te Rūnanga o Ngāi Tahu.

Benita has over 15 years' experience working in environmental management and her PhD is in the field of Kaupapa Māori environmental health management. She has previously worked for DOC on Ngā Whenua Rānui contracts in the Hawkes Bay and has taken an active role in the community and marae life, with representation at local, regional and national level.

4.6 Board meetings

The Board held 5 meetings during the reporting period. Venues for the meetings vary each year to ensure a wide coverage and enable members of the public in the district to attend meetings and access the Board.

Table B: Board meeting dates and location

Board meeting date	Meeting location and venue
23 August 2018	Geraldine
28 November 2018	Christchurch
13 February 2019	Mahaanui
10 April 2019	Twizel
21 June 2019	Christchurch

4.7 Attendance

The table below summarises the number of Board meetings attended by members out of the total number of meetings held during the year. Members attended other meetings and events in their role as Board members, including subcommittee meetings and representative roles.

Table C: Attendance

Board member	Board Meetings	Field Trips	Workshops
Te Awhina Arahanga	3/5	2/3	1/2
Bethany Baker	4/5	2/3	2/2
Yvette Couch-Lewis	0/5	0/3	1/2
Joseph Hullen	4/5	0/3	0/2
Helen Ivey	3/5	3/3	0/2
Sam Newton	5/5	3/3	2/2
Joy Paterson	3/5	3/3	1/2
Dr Heather Purdie	4/5	3/3	2/2
Paula Smith	5/5	3/3	2/2
Sophie Smith	5/5	3/3	2/2
Dr Benita Wakefield	5/5	3/3	2/2
Dr Robert Wynn-Williams	4/5	3/3	1/2



Canterbury Aoraki Conservation Board

Back Row (L to R): Dr Robert Wynn-Williams, Joseph Hullen, Paula Smith, Helen Ivey, Te Awhina Arahanga, Bethany Baker

Front Row (L to R): Sophie Smith, Dr Benita Wakefield, Joy Paterson, Sam Newton

Absent: Dr Heather Purdie, Yvette Couch-Lewis

4.8 Field trips and site inspections

Field trips are an excellent opportunity for Board members to become more aware of conservation issues within their region.

Table D: Field trips and site inspections

Field trip date	Field trip destination
22 August 2018	Rangitata Valley
27 November 2018	North Canterbury
8/9 April 2019	Mackenzie Basin

Rangitata Valley

The Board's focus for this field trip was braided rivers. The field trip included:

- Department of Conservation office, Geraldine. Introductions to local staff. John and Ro Acland, Mt Peel Station provided Board members with a brief background on the Upper Rangitata Gorge Landcare Group.
- White Rock Station. A presentation was provided on braided rivers and the management undertaken in the Rangitata Valley, as well as background on the Braided River Flagship Programme.
- Bush Stream Carpark beyond Mesopotamia Station. Presentations from DOC biodiversity staff on predator trapping, braided river threatened species and threats, weed control programme, recreation activities, landscape history, community group involvement in back country hut management and the Te Araroa trail.

This was an extensive field trip with excellent presentations from DOC staff on the special environment of the Rangitata River as a braided river. The Board received a thorough briefing on the work undertaken by DOC in conservation of braided rivers and the threats to both the habitat and the endangered species that are found there.



Predator Control Briefing, Rangitata

Image: (M-L Grandiek, 2018)



Mesopotamia

Image: (M-L Grandiek, 2018)

North Canterbury

The Board had planned to visit the Mount Grey/Maukatere, Mount Thomas Forest and Oxford Forest Conservation Areas. Due to the inclement weather conditions, the field trip was revised. The Board visited:

- Wooded Gully and Glentui (Mount Thomas Conservation Area).
- Ashley Gorge Reserve – the Board was joined by members of the Reserve’s Advisory Group and were briefed on the extensive work and commitment undertaken by the Group.

During the revised field trip, the Board observed remnants of the native vegetation that once existed throughout the region including native beech forest, scattered podocarp forest and tussock fields. The Board was briefed by DOC staff on the history of the area, and there was general discussion on camping, walking, recreation opportunities and future development.



Wooded Gully, Mount Thomas Conservation Area

Images: (M-L Grandiek, 2018)

Mackenzie Basin

The Board's focus for this field trip was to develop a broader understanding of the significant pressures on the Mackenzie Basin and the collaborative efforts being undertaken to restore the iconic natural landscapes and threatened species of the Basin.

The field trip included:

- Kakī Aviary – introduction to kakī and an overview of the captive breeding programme
- Lake Ohau – cultural storytelling with a visit to the lakeshore where a Pou has been erected to celebrate the Waitaha story
- Power point presentation at DOC Twizel office on the ecology of the Mackenzie Basin and the drylands park project
- Stilling Basin with overview to Pukaki Downs. Discussion with Mackenzie Wilding Trees Trust on the challenges of wilding tree control
- Braemar Station – discussion with Mackenzie Country Trust on background to the Trust and how they can support the creation of a Dryland Heritage Area
- Forks Stream – briefed on current situation with native fish and how the Te Manahuna Aoraki Project will enhance their protection
- Patterson's Terrace – ecology and habitat of the robust grasshopper (*Brachaspis robustus*)



Robust grasshopper (*Brachaspis robustus*)

Image: (DOC Website, 2018)



Pou dedicated to Te Maihora, Lake Ohau
Image: (M-L Grandiek, 2018)



Ben Ohau
Image: (M-L Grandiek, 2018)

4.9 Board committees

Membership of Board committees was reviewed in July, at the beginning of the reporting year.

Table E: Committees

Committee name	Members
Aoraki Mount Cook National Park Management Plan Review	Dr Robert Wynn-Williams* Committee of the Whole
Communication and Awards	Sophie Smith* Bethany Baker Joseph Hullen
Concessions	Dr Robert Wynn-Williams* Yvette Couch-Lewis Helen Ivey Joy Paterson Dr Heather Purdie
Iwi	Joseph Hullen* Te Awhina Arahanga Yvette Couch-Lewis Dr Benita Wakefield
Land and Water	Paula Smith* Bethany Baker Joseph Hullen Sophie Smith
St James Reclassification	Sam Newton* Joseph Hullen Paula Smith
Tenure Review	Helen Ivey* Joy Paterson Dr Heather Purdie Paula Smith Dr Robert Wynn-Williams
<i>* Denotes Chair</i>	

4.10 Training for members

The Board held two workshops:

- July 2018 – Induction/Reinduction and Annual Work Plan
- June 2019 – Completion of Annual Work Plan, individual Board members and DOC staff presentations:
 - J Holborow, Tahr Management Programme Update
 - S Bowie, FENZ and DOC National Fire Team

4.11 Department involvement in Board meetings

Department staff also attended throughout the year. Director Operations ESI, Operations Managers at site, Acting Statutory Manager, Pou Tairangahau and Board Support Officer attended Board meetings. Presentations were received from C Brumley (Planning), C Jones (Statutory Land Management), K Briden (Wilding Trees), A Foulkes (Hunting Exclusion Zones).

4.12 Special events

Canterbury Aoraki Conservation Board Awards – October 2019

The Board's Conservation Awards are held annually and recognise the efforts of local groups and individuals in supporting conservation within the wider Canterbury region. The 2018 Awards were sponsored by The Isaac Conservation and Wildlife Trust.

This year's recipient of the Canterbury Aoraki Conservation Board Award and \$3,000 towards their project, was Squawk Squad. Squawk Squad is a social enterprise founded in New Zealand and their kaupapa is to connect and engage kiwis in the protection and growth of our native birds. Their approach is about taking conservation to the grassroots level by engaging our rangatahi to become the kaitiaki of our lands and multiply the impact by educating their whanau and beyond.



Recipient of the 2018 Award and Trophy - Squawk Squad

Image: (Sophie Smith, 2018)

A \$2,000 finalist award was given to the Banks Peninsula Conservation Trust (BPCT) - Covenants Program. BPCT works with landowners to legally protect important biodiversity and landscape values in perpetuity through the covenanting process. BPCT have successfully registered 66 covenants covering 1,343 hectares across the Banks Peninsula ecological region.

A \$1,000 finalist award was given to the Little River Trap Library (LRTL). LRTL provides Banks Peninsula landowners with an opportunity to loan traps free of charge and to learn about pest control. It is a community initiative with strong partnerships that is expanding the scope to control predators on private land. The library was started in response to a need by landowners on Banks Peninsula wanting to get involved in protecting biodiversity including, the recently reintroduced tui and morepork (ruru) on their land.

4.13 Annual Work Plan

Please refer to Appendix 1 for the full Board Annual Work Programme.

5. Statutory activity

5.1 Canterbury (Waitaha) 2006, Conservation Management Strategy (CMS)

To recommend the approval by the Conservation Authority of Conservation Management Strategies, and the review and amendment of such strategies under the relevant enactments

Implementation monitoring

The Board received the Annual CMS Implementation, Monitoring, Reporting and Review from the Department. The following recommendations were made:

- Departmental reports that result in the completion of CMS milestones are to be provided to the Board
- The Department is to provide the Board with a comprehensive report on progress in the milestone reporting 1.5.2: Historic and Cultural Heritage (*p. 34-35 CMS*)
- The Year 3 CMS report to outline each operations districts' work regarding community engagement

The Board further requested the Department provide a comprehensive report on the progress to date and details of their plan going forward to achieve the Year 10 Milestone on 2.6: Braided Rivers/Ki Uta Ki Tai Place (*p. 99-100 CMS*). The Board is currently waiting to receive this report.

5.2 Management plans

Conservation Management Plans

To approve Conservation Management Plans, and the review and amendment of such Plans, under the relevant enactments

The Department has completed the processes to withdraw 1 Conservation Act 1987 Management Plan and revoke 11 Reserves Act 1977 Management Plans in Canterbury. The withdrawal was undertaken in accordance with Section 65(12)(c) of the Conservation Act 1987. The revocations were undertaken in accordance with Sections 40A and 119 of the Reserves Act 1977, with Section 120 giving public rights of objection and of making submissions.

The withdrawn plan is:

- Wilberforce Crown Land Management Area Management Plan 1982

The revoked Canterbury plans are:

- Bankside Scientific Reserve Management Plan 1979
- Eyrewell Scientific Reserve Management Plan 1979
- Castle Hill Nature Reserve Management Plan 1980
- Motunau Island Nature Reserve Management Plan 1980
- Talbot Forest Scenic Reserve Management Plan 1980
- Quail Island Recreation Reserve Management Plan 1982
- Raincliff Historic Reserve Management Plan 1984
- Weka Pass Historic Reserve Management Plan 1984
- Bendhu Scientific Reserve Management Plan 1985
- Kaitorete Spit Scientific Reserve Management Plan 1986
- Loch Katrine Recreation Reserve Management Plan 1999

The Board requested advice from the Department as to how the public can be assured that the reserves remain protected now that their management plans have been revoked. The Board is currently waiting to receive this advice.

National Park Management Plan implementation monitoring

There are two National Parks within the Board's area of jurisdiction. Each National Park has a management plan which is reviewed at 10-year intervals.

Arthur's Pass National Park

The Arthur's Pass National Park Management Plan was reviewed and approved by the New Zealand Conservation Authority in December 2007.

The Department presented an annual report to the Board on this Plan at its meeting of 23 August 2018. The Board made specific note of the following items:

- Preservation Outcomes (Whole Park)
- Preservation Outcomes (Bealey and Waimakariri Valleys)
- Public Use, Outcomes (the National Park is seen as providing)
- Corridor Outcomes (for the Bealey and Waimakariri Valleys)

The Board requested the Department provide regular updates on:

- the progress regarding the redevelopment of the Arthur's Pass National Park Visitor Centre; and
- updates on weed control to the transport corridors within the Park including actions undertaken by the Department, New Zealand Transport Authority and Kiwi Rail.

Aoraki Mount Cook National Park

The Aoraki Mount Cook National Park Management Plan is currently under review. The submission period for the draft Plan closed on 4 February 2019 with a total of 890 submissions received. However, the plan review process is now 'paused' following the Ngāi Tai Supreme Court decision and the request from Ngāi Tahu to pause work on progressing the review of the draft Plan. Hearings in support of the draft Plan submissions have not been held as a consequence of the 'pause' becoming effective. All submitters have been notified of the 'pause' and the consequential cancellation of the Hearings.

The Department presented an annual report to the Board on the existing Plan at its meeting of 28 November 2018. The Board acknowledged that Aoraki Mount Cook National Park is resource strained and that the Department is currently working under an old Management Plan and further thanked the Department's operations team for their management of the National Park. The Board looks forward to the cessation of the 'pause' and the subsequent ratification and application of the new Management Plan for the National Park.



Aoraki Mount Cook National Park

Image: (doc.govt.nz)

6. Advice and advocacy

All Board members have responsibility for liaising with other groups when opportunities arise, and some members have specific roles in liaison. The Board appointed various members to liaise with other groups and agencies.

Table F: Board liaisons and representatives

Board member	Group/agency/organisation
Bethany Baker	Environment Canterbury Healthy River Ōpāwaho Strategic Leadership Group
Joseph Hullen	Avon-Otakaro Network
Helen Ivey	Tahr Interest Group Himalayan Tahr Control Plan Implementation Group Wilding Conifer Management Trust Mackenzie Country Trust
Sam Newton	Himalayan Tahr Control Plan Implementation Group New Zealand Conservation Authority Fish & Game
Sophie Smith	Social Media – Facebook and Twitter
Dr Robert Wynn-Williams	Neighbouring Conservation Boards Game Animal Council Deerstalkers Groups

6.1 Other conservation boards liaison

The Board's immediate neighbours are the Otago, West Coast/Tai Poutini and Nelson Marlborough Conservation Boards. Dr Robert Wynn-Williams, as liaison, monitors the minutes of the adjoining Boards (and the New Zealand Conservation Authority) for issues of common interest and reports back at each meeting.

6.2 Authority liaison

Tony Lepper is the New Zealand Conservation Authority appointed liaison to the Board.

6.3 Department advice

The Board provided advice to the Department on the following issues:

Change of Status

The Board provided comment and recommendations on the following areas where there was a proposed change of status or classification:

- Soil Conservation and River Control Reserves – Rangitata Island X 2
- Proposal to Add Conservation Land to Craigieburn Forest Park

Concessions

Recommendations were made to the Department on a number of Concession Applications including the following public conservation areas:

- Aoraki Mount Cook National Park
- Castle Hill Conservation Area
- Lake Middleton Recreation Reserve
- Ruataniwha Conservation Area
- Mount Hutt, Craigieburn Forest Park and Mount Oxford
- Korowai-Torlesse Tussocklands Park, Craigieburn Forest Park, Castle Hill Conservation Area and Oxford Forest Conservation Area

The Board further recommended that the following three issues be considered by the Department in the decision-making process for future ski field concession applications:

- Comprehensive safety plan
- Environmental impact report
- Economic sustainability report

Other

- Recommendations on the Department review of the DOC Community Fund including:
 - Additional funding be on offer
 - Process be streamlined but remain at regional level
 - Not restricted to biodiversity projects
 - Seed funding should remain
- Boyle River Outdoor Education Centre – Request for Hunting Exclusion Zone
- Recommendation to prohibit the use of drones at Kura Tāwhiti as this is a Tōpuni site. Notification of prohibiting drones at this site to be added to the Departments website
- Recommendation that Department implement in a more robust manner, the policy recommendations in the existing management plan regarding vehicle access at Te Waihora/Lake Ellesmere
- Recommendation to Minister of Conservation regarding possible amendments to Conservation Act to provide greater protection for native fish
- Correspondence to Minister of Conservation signalling the Board's support of the Wilding Conifer Control Programme and requesting the Minister to support the Programme's budget bid for \$100 million for wilding conifer control

The Board provided comment to:

- Land Information New Zealand: Submission on Enduring Stewardship of Crown Pastoral Land Discussion Document
- Kiwi Rail – Weed management on rail corridor in Arthur's Pass National Park
- New Zealand Transport Authority - Weed management on rail corridor in Arthur's Pass National Park

6.4 Community advocacy and involvement

The Board believes that working with conservation organisations and members of the public is very important. Meetings were held in different parts of the Canterbury Aoraki region and opportunities for the public to attend Board meetings were advertised.

Members of the public attended the Public Forum at several of the year's meetings and a range of issues were raised. The Board appreciated their input and efforts made to attend the meetings and responded by letter with a response to questions asked or concerns raised.

Public forum issues raised were:

- Balloted hunting
- Administration fees for hunting permits
- Post-1080 control work monitoring
- Rationalisation on codes of practice for restoration of back country huts
- Volunteer work in St James Conservation Area
- Reclassification of stewardship land

The Board has a practice of inviting representatives from community organisations to present at each meeting. Speakers this year have represented:

- Land Information New Zealand – Summary of LINZ regulatory statutory responsibilities and review of Crown Pastoral Lease system
- Department of Conservation – Wilding Tree Control
- Christchurch City Council – Collaborative Communities Education Model for Ōtautahi
- Te Manahuna Aoraki Project
- Mackenzie Basin Wilding Trees Trust
- Mackenzie Country Trust
- Mackenzie Basin Agency Alliance Programme

6.5 Community visibility

The Board maintains a presence on the Department's website. Updates from the Board were provided throughout the year on activities undertaken. The Board also maintains a presence on both Twitter and Facebook.

The Board provided letters of support for the following groups

- Okuti River Project
- Mt Somers Walkway Society
- Sharplin Falls Track Re-Routing Working Group

6.6 District and regional council advocacy and advice

The Board appreciates the opportunities to meet with representatives of the four local Councils as there are several regional issues in which it is interested.

7. Acknowledgements

The Canterbury Aoraki Conservation Board would like to express its support for Department of Conservation staff within the Board's rohe who have been facing multiple challenges over the past 12 months. It seems to the Board that the recent period has been particularly stressful, with numerous issues facing the Department.

We would also like to provide particular acknowledgement to those staff who, along with their families, have been on the receiving end of threats and intimidation. This type of behaviour is reprehensible. The Board continues to encourage staff to keep looking out for each other and stay strong in the face of these challenges.

The Board would like to acknowledge and thank all staff for the great work that they do in conserving New Zealand's natural and historic heritage.

APPENDIX I

Canterbury Aoraki Conservation Board Work Programme 1 July 2018- 30 June 2019

Work Programme Overview

This Canterbury Aoraki Conservation Board work programme is structured in three parts, namely:

- Part A: Planned Board activities aimed at meeting the regional Work Programme
 - Review/development/monitoring of statutory management plans including Conservation Management Strategies (CMS);
 - Advice relating to stewardship land;
 - Other statutory functions for the Board;
 - Advocacy; and

- Part B: Planned Board activities aimed at general expectations
 - Working with the Department;
 - Taking account of the Ministerial priorities for the Department as contained in the Department's Four-year Plan;
 - Working with adjoining Boards and the NZCA;
 - Understanding the Board's contribution to giving effect to the principles of the Treaty of Waitangi;

- Part C: risks/ issues from the Board's perspective, and opportunities for conservation growth that are not covered above.

PART A: REGIONAL WORK PROGRAMME

1 Review / development of statutory management plans including Conservation Management Strategies (CMS)

1.1 Board Objective:

The Board will actively work with Ngāi Tahu, DOC and submitters to ensure the completion of the Aoraki Mount Cook National Park Management Plan Review

Planned Board Activities, Success Measures and Key Milestones

A	Board members and its nominated subcommittee actively contribute to the process through participation in hui and public hearings.
	<p>Progress: The Board and its nominated subcommittee have contributed to the process through participation in hui. The Plan review process is currently paused following the Ngāi Tai Supreme Court decision and the request from Ngāi Tahu to pause work on progressing the review of the draft Plan.</p>
B	The Board works closely with relevant DOC directors, Ngāi Tahu managers, and the NZCA to identify and support the resolution of issues that may have a diversity of views and conflicting outcomes
	<p>Progress: The Board has worked with DOC directors and we were influential in generating and advocating the inclusion of the spatial plan in the draft Plan. The Board has been kept well informed by DOC of prospective diversity of views and advised of where there will be contentious debate. Few, if any opportunities arose during the year to work with Ngāi Tahu or the NZCA.</p>
C	The Board will work to ensure the AMCNP MPR process is reviewed to determine its effectiveness in bringing satisfactory outcomes for conservation over the tenure of the new plan.
	<p>Progress: As stated in 1.1A, the Plan review process is currently on pause. The Board will advocate for satisfactory outcomes for conservation upon recommencement of the process.</p>

1.2 Board Objective:

In conjunction with the Department, the Board will determine priorities for implementation of the approved Canterbury CMS

Planned Board Activities, Success Measures and Key Milestones

A	The Board will assist the Department to implement the Canterbury CMS by focussing attention on the Boards' CMS priorities provided in Appendix A.
	<p>Progress: The Board has drawn to the Department's attention, several Year 3 Milestones that need to be completed and requested reporting on progress of the Year 10 Milestone – Braided Rivers / Ki Uta Ki Tai Place.</p>

B	The Board will work to ensure the Department implements a traffic light system of reporting back to the Board on progress on CMS delivery, particularly those in Appendix A.
	Progress: The Board received an updated traffic light report on the progress on CMS delivery at its August 2018 meeting.
C	The Board will review its list of focus CMS Milestones. This review will be undertaken at the end of the Year 3 Milestones being 1 September 2019.
	Progress: Not undertaken in the 2018/19 Board year.

1.3 Board Objective:

In conjunction with the Department, the Board will seek to develop a Tenure Review strategy that works at a regional scale to effectively support the policies of the Canterbury CMS

Planned Board Activities, Success Measures and Key Milestones

A	The Board will undertake a field trip that looks in detail at Tenure Review opportunities and challenges at both the farm and regional scale.
	Progress: Tenure Review was a Board focus and had been scheduled into the Board's field trip to the Mackenzie Basin in April 2019. However, the Government announced in February 2019 that it was ending tenure review and opening consultation to change the way Crown Pastoral lease land is managed by LINZ. Accordingly, Tenure Review was removed from the field trip itinerary and a general discussion relating to the implications of the ministerial decision took place in the Board meeting the following day.
B	The Board will advocate for the production of a narrative (tool to assist) that outlines the Department's role in the process of Tenure Review. The narrative is to provide information on landscape scale considerations of lands that become public conservations lands, including connectivity, public access and the ideal outcomes for future recreational use and conservation.
	Progress: The Board advocated for the production of a narrative tool but the Government's decision in February 2019 to end tenure review overrode this. The Board supported transparency in their submission to LINZ on the Consultation on Enduring Stewardship of Crown Pastoral Land

2 Stewardship Land

2.1 Board Objective:

The Board will continue to provide the Minister and Department with advice on priorities for reclassification of stewardship areas that require increased protection because of their significant conservation values

Planned Board Activities, Success Measures and Key Milestones

A	The Board will actively engage with the Department on any processes regarding the reclassification of lands within its jurisdiction, with particular reference to the Top Five Candidates (See Appendix B).
Progress:	The Board continues to actively engage with the Department on the reclassification of the Top Five Candidates, particularly the cluster of stewardship land within the St James Conservation Area. The Board has also provided advice on routine reclassification processes at Kaitorete, and additions to Craigieburn Forest Park and Korowai/Torlesse Tussocklands (Conservation) Park.
B	Work with the Department and Ngāi Tahu to progress the land status review for all public conservation lands and waters within the Board's region, with particular focus on the St James Conservation Area.
Progress:	To date, the Board has not been involved in any discussions with Ngāi Tahu or Te Rūnanga o Kaikōura in the process for reclassification of the St James. The Board is currently awaiting completion of the Ngāi Tahu Cultural Values Report.
C	Ensure the Department and all stakeholders are aware of the high priority the Board has for reclassification of the St James Conservation Area from stewardship land to conservation park status.
Progress:	The Board receives regular updates from the Department on the progress of the St James Reclassification Project. The Board has also requested the Department provide a copy of any cultural and historical values reports on the St James. The Board continues to ensure the Department is aware that the St James is a high priority.
D	Incorporate into field trips an overview of stewardship lands that would benefit from having their land status changed.
Progress:	The Board visited the Peel Forest Park Scenic Reserve in August 2018. The Board wrote to the Department requesting clarification of the Year 3 CMS Milestone in the CMS regarding the 'reclassification of conservation areas adjacent to Peel Forest Park Scenic Reserve and amalgamate them with the reserve'.

E	Increase support and advocate for the protection of the landscapes and ecosystems of the Mackenzie Basin and champion the development of a drylands park.
	<p>Progress:</p> <p>The Board undertook a 3-day field trip and meeting in the Mackenzie Basin in April 2019. The Board received presentations from the Te Manahuna Aoraki Project, Mackenzie Basin Agency Alignment Programme and the Mackenzie Country Trust. The Board affirmed their support for the Mackenzie Country Trust for their work to assist and oversee the establishment of a drylands heritage area, in partnership with the Department of Conservation, in the Mackenzie Basin.</p>

3 Other statutory functions

3.1 Board Objective:

The Board will advise on proposed changes of status for nationally and internationally important areas.

Planned Board Activities, Success Measures and Key Milestones

A	Work with the Department to achieve the CMS Milestone for Braided Rivers Place – a World Heritage Area or Wetland of International Importance achieved for at least one Canterbury braided river by Year 10.
	<p>Progress:</p> <p>The Board is currently awaiting a report from the Department (requested in November 2018), on the Board’s recommendations and progress made by the Department in realising the Year 10 Milestone.</p>
B	Respond to requests and papers from the Department with advice on any proposed changes of status for nationally and internationally important areas.
	<p>Progress:</p> <p>Nil received.</p>
C	Assess the risks associated in establishing a World Heritage Area within the Board’s jurisdiction.
	<p>Progress:</p> <p>The Board is cognisant of the risks and these are discussed at Board meetings. In June 2019, the Board resolved to support a University of Canterbury student project, as a community partner. The project that will focus on gathering information to inform the CMS milestone to achieve World Heritage Area of Wetland of International Significant of at least one Canterbury braided river.</p>
D	Advocate and promote the protection of the Tasman River as per the CMS and AMCNP MP.
	<p>Progress:</p> <p>The Board received a briefing on the wider river recovery project being undertaken in the Mackenzie Basin. The Board continues to promote the Tasman River’s inclusion in the Aoraki Mount Cook National Park.</p>

3.2 Board Objective:

Board members will take the initiative to meet with community groups and general public to gauge community reaction to conservation initiatives planned or implemented by the Department

Planned Board Activities, Success Measures and Key Milestones

A	The Board will actively engage with and encourage volunteer groups and the general public to encourage community involvement in conservation activities within the region.
	Progress: Board members actively engage with their communities. Board members attended workshops, forums and public meetings including: <ul style="list-style-type: none">• Committee for Canterbury and Trees that Count• Kahui Governance Group (Conservation)• Ahuriri River Reach Group• Greenpeace – Dairying in the Mackenzie Basin• Healthy River Ōpāwaho / Heathcote River Project (Christchurch City Council)• Water Zone Committees
B	Board members will report back to the Board as a whole by providing regular written liaison reports.
	Progress: Most members provide written bi-monthly liaison reports to the Board.
C	The Board will continue to host annual Conservation Awards event to acknowledge and celebrate efforts by conservation, recreation, school, and industry groups to further conservation values and outcomes in the region.
	Progress: The Board’s annual Conservation Awards were held in October 2018 and were generously sponsored by the Isaac Conservation and Wildlife Trust.
D	The Board will continue to promote its social media presence through its Facebook page.
	Progress: The Board posts regularly to its Facebook Page and provides regular observations via Twitter.

4 Advocacy

4.1 Board Objective

The Board will pursue all reasonable opportunities to advocate at public forums and in any statutory planning processes

Planned Board Activities, Success Measures and Key Milestones

A

The Board's sub-committees will actively work towards ensuring government agencies and planning processes receive relevant submissions from the Board. Representatives from the Board will advocate at public forums if required and work with the Department in developing submissions where applicable.

Progress:

The Board's Water & Land, Tenure Review and Concessions sub-committees ensured timely and effective submissions were undertaken. These included submissions on:

- Proposed revocations of Local Purpose Reserves
- Management of Crown Pastoral Land in the South Island High Country
- Enduring Stewardship of Crown Pastoral Land Discussion Document
- Recommendations on various Concession Applications with particular reference to Aoraki Mount Cook National Park
- Additions to Craigieburn Forest Park

Representatives from the Board attended public forums and community events:

- Tahr Plan Implementation Liaison Group
- Te Manahuna Aoraki Project
- Te Kōhaka o Tuhaitara Trust
- Mackenzie Basin Agency Alignment
- Land Information New Zealand public consultation meetings

PART B: GENERAL EXPECTATIONS

5 Working with the Department

Board Objective:

Board members will maintain good working relationships and open dialogue with Directors, Managers and Board Support Officers in order to engage strategically in conservation for the region

Planned Board Activities

A	Board Chair will meet periodically with the Director Operations to ensure all are engaged to support conservation in the region.
	Progress: Regular phone calls and meetings between formal meetings.
B	Board field trips will be aligned with the Annual Work Plan and any conservation topics that the Department considers the Board should be further briefed on.
	Progress: The planning and organisational support provided by the Board Support Officer and Community Rangers/Supervisors at place have been highly effective in ensuring an ongoing strong alignment.
C	The Board will work with the Department to ensure Board members are briefed on any areas where they require a better understanding of the departments work. This will involve briefings at Board meetings.
	Progress: The Department has provided effective briefings when requested by the Board. More timely responses to the Board's requests going forward will enable the Board to be more readily informed.
D	Board Chair and Board Support Officers to attend relevant Conservation Board Regional meetings where planned.
	Progress: The Deputy Chair provides updates to each meeting of adjoining Board's matters of interest. The Board Support Officers hui was deferred until August 2019.
E	Board Chair to attend where possible relevant NZCA and Conservation Board conferences and workshops.
	Progress: The Board Chair attended the annual Conservation Board Chairs meeting with the NZCA.

6 Taking account of Ministerial priorities for the Department

Board Objective:

The Board will identify opportunities to support the following additional areas of work in the Canterbury rohe:

- *Inaka*
- *Orange-Fronted Parakeet*
- *Marine Conservation*
- *Cultural Heritage*
- *Kaitorete*
- *Ski fields*
- *Tourism Pressures*

Planned Board Activities

A	Board to work with the Department in receiving updates on the above areas of work and key current operational issues including those that relate to biodiversity, recreational and management.
	Progress: The Board has focused its work on the areas identified and this work is ongoing.
B	Board to advocate for Kaitorete as an area of considerable ecological significance. The Board will request updates from the Department and continue to respond to and support initiatives to protect this area.
	Progress: The Board continues to advocate for Kaitorete, and a field visit is scheduled for the 2019/20 year.
C	Board to advocate where they can with interest groups on any of the above topics.
	Progress: The Board continues to advocate where they can with interest groups. Letter of support (in principle) have been sent to: <ul style="list-style-type: none">● Christchurch City Council – Collaborative Communities Education Model for Ōtautahi Christchurch● Mt Somers Walkway Society● Mackenzie Country Trust● Okuti Valley River Project● Boyle River Outdoor Education Centre

7 Working with adjoining Boards and the NZCA

Board Objective:

Board members will liaise with neighbouring conservation boards in order to progress cross boundary CMS issues and other matters of mutual interest

Planned Board Activities

A	The Board's liaison member for neighbouring Conservation Boards will continue to actively follow minutes and any identified common issues.
Progress:	The Board's Deputy Chair actively follows the minutes for neighbouring Conservation Boards and reports back to each meeting on any shared issues.
B	Board Chair to attend relevant regional meetings of Board Chairs so cross boundary CMS and other issues can be progressed.
Progress:	The Board Chair attended the National Conference for Board Chairs in Wellington.

8 Understanding the Board's contribution to giving effect to the principles of the Treaty of Waitangi

Board Objective:

The Board will understand and support the Board's and Department's obligations under Treaty settlements as well as principles under Section 4 of the Conservation Act

Planned Board Activities, Success Measures and Key Milestones

A	The Board will actively support Ngāi Tahu involvement in all facets of the Aoraki Mount Cook National Park Management Plan Review and the reclassification of stewardship land including the St James Conservation Area.
Progress:	The Aoraki Mount Cook National Park Management Plan Review is currently paused. There has been no interaction between the Board and Ngāi Tahu regarding the reclassification of stewardship land. As work on the St James Conservation Area progresses in 2019/20 and the Plan review comes off pause, the Board will look towards actively supporting Ngāi Tahu within these processes.

B	Iwi committee members to ensure TRoNT and rūnaka are briefed and consulted on matters that the Board deem appropriate.
	Progress: Iwi Committee members meet regularly with TRoNT.
C	Iwi committee members to report back at each Board meeting on liaison and any issues that the Board should be aware of.
	Progress: Iwi committee members report back to the Board.
D	The Board will seek to have at least one hui each year at a marae within its takiwā.
	Progress: The Board's June meeting at Rapaki marae was deferred due to a double-booking.

PART C: RISKS AND OPPORTUNITIES

9 Risks from the Board's perspective

A	That the public in general does not yet have sufficient knowledge of what the role and activities of Conservation Boards are, and what they stand for.
B	That the Board and/or the department does not effectively prioritise its activities, outcomes, and resources.

10 Opportunities for conservation growth

A	Board members to encourage and support tourism activities that enhance conservation values.
	Progress: Board members continue to actively engage with their communities to encourage and support tourism activities within the Board's rohe through their liaison roles.

APPENDIX A:**CANTERBURY AORAKI CONSERVATION BOARD FOCUS MILESTONES**

1	1.4 Treaty partnership with Ngāi Tahu ❖ Agreed systems and processes to monitor and measure Treaty engagement and satisfaction of Ngāi Tahu with Department activities. (By Year 3: Sept 2019)
2	1.5.1 Natural Heritage ❖ A baseline report assessing the condition of priority ecosystem units. (By Year 3: Sept 2019)
3	1.5.1 Natural Heritage ❖ Sustained control of wilding trees within the high country in accordance with the New Zealand Wilding Conifer Management Strategy 2015-2030. (By Year 5: Sept 2021)
4	1.5.2 Historic and Cultural Heritage ❖ A baseline report assessing the condition of actively conserved historic places listed in Appendix 10 that are stable and not deteriorating, and including the identification of relevant community partnerships. (By Year 3: Sept 2019)
5	1.5.3 Recreation ❖ A baseline report assessing the number and condition of huts, tracks and other visitor facility structures, the numbers and the satisfaction of people using them, and the opportunities for recreational groups to assist in their management and retention. (By Year 3: Sept 2019)
6	1.5.3 Recreation ❖ An increase in the number of huts and tracks that have recreational groups assisting in their management and retention. (By Year 5: Sept 2021)
7	2.1 National Parks Place ❖ Completion of review of Aoraki/Mount Cook National Park Management Plan. (By Year 3: Sept 2019)
8	2.3 Northern High-Country Place ❖ Land status review for all public conservation lands and waters within the Place, including the St James Conservation Area. (By Year 3: Sept 2019)
9	2.3 Northern High-Country Place ❖ Resolution of the boundaries and statutory provisions for an area where recreational hunting will be given priority for wild animal control. (By Year 3: Sept 2019)
10	2.4 High-Country Basins Place ❖ Monitoring results of visitor use and impacts on natural, historic and Ngāi Tahu cultural values at Kura Tāwhiti Scenic Reserve. (By Year 5: Sept 2021)
11	2.6 Braided Rivers / Ki Uta Ki Tai Place ❖ World Heritage Area or Wetland of International Importance achieved for at least one Canterbury braided river. (By Year 10: Sept 2026)

APPENDIX B: RECLASSIFICATION OF CONSERVATION LAND – TOP FIVE CANDIDATES

Canterbury Aoraki

PRIORITY	STEWARDSHIP LAND	AREA (HA)	PROPOSED NEW STATUS
1=	The Poplars Conservation Area	4248	<i>Conservation Park?</i>
1=	St James Conservation Area	79429	<i>Conservation Park?</i>
1=	Conservation Area Nina Doubtful Rivers	3014	<i>Conservation Park?</i>
1=	Lower Doubtful/Boyle River Conservation Area	1557	<i>Conservation Park?</i>
2=	Central Southern Alps Wilberforce Conservation Area	7454.10	<i>Add to Craigieburn Conservation Park</i>
2=	Rangitata/Rakaia Headwaters Conservation Area	53959	<i>Add to Hakatere Conservation Park</i>
3	Conservation Area Kaitorete (3 parcels)	72.84	<i>Scientific Reserve?</i>
4=	Conservation Area Waikewai Creek Taumutu (2 parcels)	2.83	<i>Mahinga Kai Conservation Park</i>
4=	Conservation Area – Lakeside	4.05	<i>Mahinga Kai Conservation Park</i>
4=	Conservation Area – Landing Yard Point	2.43	<i>Mahinga Kai Conservation Park</i>
4=	Conservation Area – Te Waihora Harts Creek	6.83	<i>Mahinga Kai Conservation Park</i>
4=	Conservation Area – Te Waihora Proposed Picnic Area	7.83	<i>Mahinga Kai Conservation Park</i>
4=	Conservation Area – Greenpark Sands Lower Selwyn Hut	1.9	<i>Mahinga Kai Conservation Park</i>
4=	Conservation Area – Lower Selwyn Huts	1.93	<i>Mahinga Kai Conservation Park</i>
4=	Conservation Area - Lill River Silverstream	0.60	<i>Mahinga Kai Conservation Park</i>
4=	Conservation Area – Greenpark Sands	1246.62	<i>Mahinga Kai Conservation Park</i>
4=	Conservation Area – Lakelands Wildlife Reserve	213.57	<i>Mahinga Kai Conservation Park</i>
4=	Conservation Area – McQueens Lagoon (2 parcels)	24.39	<i>Mahinga Kai Conservation Park</i>
4=	Waiwera Conservation Area	651.73	<i>Mahinga Kai Conservation Park?</i>
5=	Ruataniwha Conservation Area	35800.77	<i>Conservation Park additions</i>
5=	CA-Castle Hill x 2 (2 parcels)	8472.85	<i>Conservation Park additions</i>
5=	CA- Cass Valley	214.89	<i>Conservation Park additions</i>
5=	CA – Mount Horrible	439.36	<i>Conservation Park additions</i>
5=	Porter Heights CA	727.61	<i>Conservation Park additions</i>
5=	Ben More CA	29.66	<i>Conservation Park additions</i>
5=	Oxford Forest CA	13308.00	<i>Conservation Park additions</i>

APPENDIX C: ANNUAL CALENDAR OF COMMON CONSERVATION BOARD ACTIVITIES

1 JULY TO 30 JUNE

Timeframe	Event
1 July	New Board member appointments take effect
31 August	Annual report from previous year due with the NZCA
Second half of August	Minister's Letter of Expectation sent to Boards
Mid-late September	Board chairs – annual meeting in Wellington to discuss Minister's Letter of Expectation and prospective work programmes.
Mid November	Board chairs send work programme to Minister, via DDG Conservation Partnerships
Early – mid December	Public notices calling for nominations called for next year's appointments (closing date of 28 days from date of first notice)
By mid February	Departmental recommendations provided to SBU for collation and clearance with DG or delegate.
By mid-February	South Island Board chairs – annual meeting in Dunedin to discuss common South Island opportunities and challenges
Early May	Minister's proposed Board appointments considered by Appointments and Honours Committee then Cabinet
Mid May	Board appointments made by Minister of Conservation
Late May	Press releases issued
Late June	Board pages updated on DOC website