



Rob Franklin, Moutohora island - above cliffs hearing/talking about mutton birds

Bay of Plenty Conservation Board

Annual Report 2014 - 2015

Presented to the New Zealand Conservation Authority

Pursuant to Section 6(O) of the Conservation act 1987

Serviced by the Department of Conservation, Rotorua office

PO Box 528 Taupo 3351

Contents

1. Chairperson's Report	3
2. Introduction to the Board	5
3. Membership of the Board	5
4. The Board's Area	6 – 7
5. Activities of the Board	7
5.1 Board Field Trips and Meetings	7 - 9
5.2 Board Committees and Liaison Roles	9 -10
5.3 Other comments from Board Members	11
6. How the Board has performed in Alignment to the Boards Response Letter to Annual Letter of Expectation from Associate Minister Wagner	
6.1 Whirinaki Conservation Management Plan	11
6.2 Stewardship Land	11
6.3 Local and Regional Advocacy	12
6.3.1. Conservation Management Strategy	12
6.3.2. Partnerships	12
6.3.3 Community and Business Engagement	13
7. Liaison	
7.1 Minister of Conservation	13
7.2 New Zealand Conservation Authority	14
7.3 Other Conservation Boards	14
7.4 Fish and Game Liaison	14
8. Summary of 2015-2016 Work Planning up to date	14



Photo taken by R. Franklin, Moutohora Island - in the sand dune, archaeological middens

1. Chairperson's Report

Ki te Minita o Te Papa Atawhai.

Tena ra koe i runga i nga ahuatananga o te wa. Ahakoa nga ngaru nunui i papaki mai nei, kei te kaha pupuri kit e ohaki a o tatou tupuna "kia kaha, kia toa, kia manawanui".

No reira, tangihia ratou ma kua haere ki tua o te arai.

Kua waihongia mai e ratou he tohu hei arahi mai.

Kia tika te hoe a to tatou waka ki te pae tawhiti ki te tonuitanga.

Tihe mauri ora.

On behalf of the Bay of Plenty Conservation Board, it is a pleasure to present the following results on the performance of the Board.

With the exception of one previous Conservation Board Member, the Board was an entirely new Board, so this has been a year focused largely on establishing ourselves as a board, understanding our role and our various capabilities and backgrounds.

It is positive to see the board establishing its whanaungatanga, building as a team and starting to harness individual strengths to achieve the outcomes set out at the beginning of the year. We were very pleased with the reappointment of Bill Clarke and Heidi Lichtwark in the last round of appointments as this provides continuity and retains the investment that the board, the Department and they have made in developing their understanding of their roles and the challenges and opportunities facing conservation.

The board have undertaken three field trips this year and these have proven to be very important in establishing a connection to the range of places that make up the Board rohe, and connectivity with the staff working within our takiwa. With such a large and diverse region, and with members drawn from the full spread of the area, we consider it important that we continue to visit places within the region that are relevant to the issues we have oversight of. To this end we plan to undertake a similar number of field visits over the coming year.

On behalf of the Board I congratulate the Department and Ngai Tuhoe on the progress they have made toward fully implementing the Te Urewera Settlement. While Te Urewera is no longer a part of the Conservation Board's Rohe, we have extended, informally and formally, our support to the New Te Urewera Board and we continue to take an active interest in its work.

A significant amount of mahi for the Board and for me as chair has been the progress we have made in developing the Whirinaki Conservation Management Plan in partnership with Ngati Whare. This has been, and continues to be, a challenging process for us all. Over recent months our relationship has matured and with the help of DOC staff we have made significant progress towards completing a CMS that will serve both the conservation priorities in Whirinaki and the needs of Ngati Whare as Tangata Whenua and Kaitiaki.

From an operational, troops on the ground perspective, the Board has noted the impact of recent current restructuring on the Department's staff. It is apparent that staff are under significant capacity pressure as the Department continues to carry vacancies from the 2013 restructure and now embarks on another restructure. This has, to some extent, impacted on the Boards ability to achieve all that it would like to and we urge the Department to move quickly to complete the process currently underway and to bring the Department back up to full capacity.

Notwithstanding the capacity issues, I would like to convey on my thanks to the staff of the Department. They have made themselves available, have engaged with the board in a positive and constructive manner and continue to provide the board with positive support.

Finally, I would like to acknowledge and thank my fellow Board members for their contributions over the period. They deserve significant recognition for their commitment to their roles and for the work they do. All have other vocations and calls on their time, and their commitment to the Board and to the conservation outcomes we collectively seek to achieve is a credit to them all.

Naku noa na

Ken Raureti
Chairperson
BOP Conservation Board

2. Introduction to the Board

The Bay of Plenty Conservation Board is one of the fourteen statutory bodies appointed by the Minister of Conservation under Part 2 A of the Conservation Act 1987. The functions and powers of the Board are outlined in Sections 6M and 6N respectively. The role of the Board as laid out in the Act is as follows:

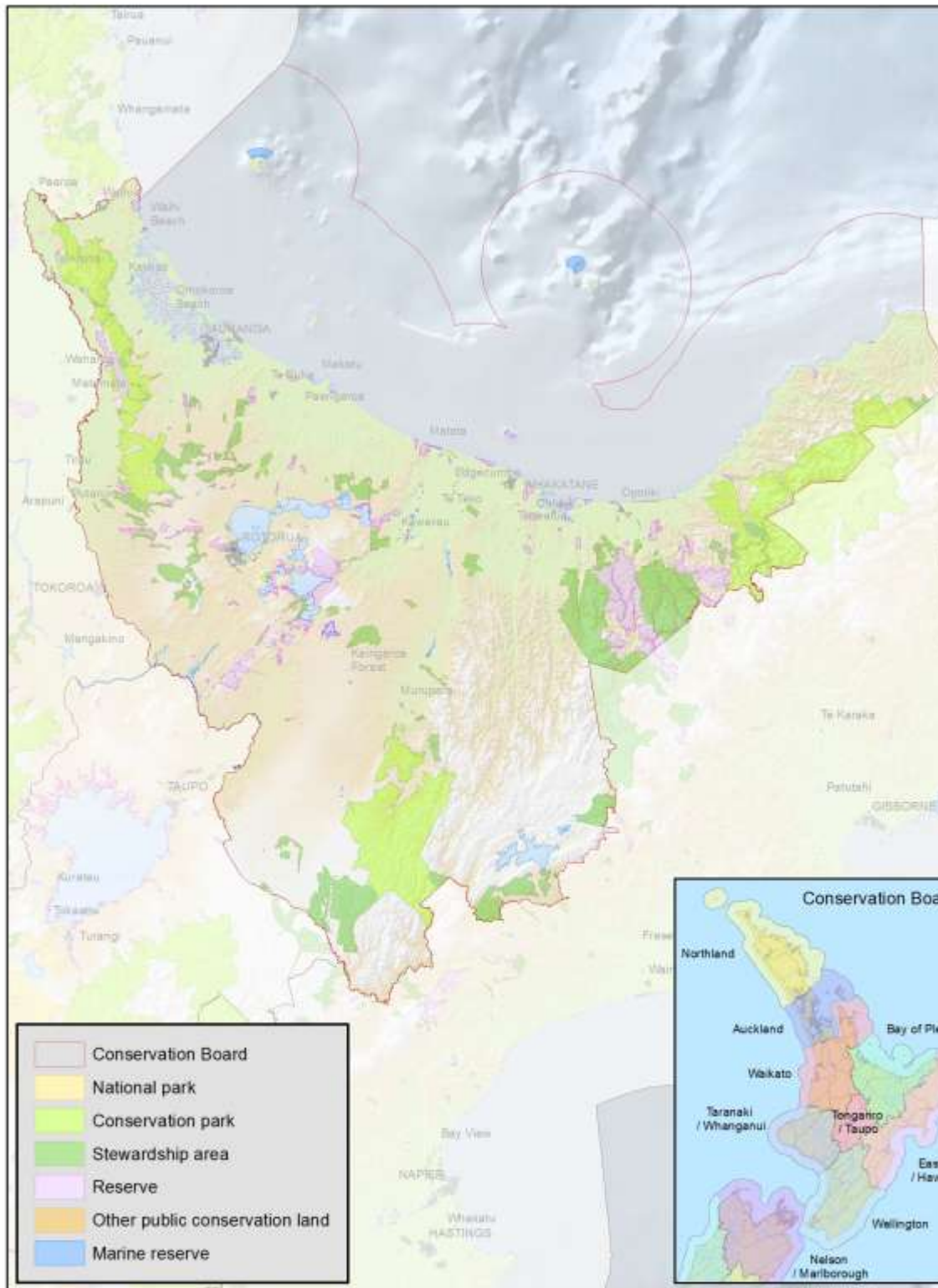
- To recommend the approval of Conservation Management Strategies;
- To approve Conservation Management Plans;
- To advise on how Conservation Management Strategies and Plans are being put into practice;
- To advise on proposed changes to the status of land areas of national and international significance;
- To advise on proposals for new walkways;
- To liaise with Fish and Game Councils on conservation matters;
- To carry out the other powers delegated to the Board by the Minister of Conservation, the Conservation Act or any other Act;
- To advocate its interests at any public forum or in any statutory planning process.

These functions and powers, where exercised, are reported on separately within this report.

3. Membership of the Board

Members are appointed to the Bay of Plenty Conservation Board by the Minister of Conservation. Board members represent a wide variety of interests and reside in communities across the Board's region. The Board membership and meeting attendance during the report period was as follows:

Board Members	Home Location	Meetings Attended (5 held)
Ken Raureti (Chairman)	Rotorua	4
Anne Mackersey	Tauranga	5
Heidi Lichtwark	Maketu	3
Jim Doherty	Kaingaroa	3
Dr Julian Lee	Opotiki	5
Phil Simpson QSM	Tauranga	4
Rob Franklin	Whakatane	3
Steve Morris	Papamoa	3
William (Bill) Clark	Whakatane	4



Bay of Plenty Conservation Board

New Zealand Government
Te Kaitiaki Take Kōwhiri

0 25 50 100 Kilometres

Document Path: G:\GIS\Projects_2010\Kaitiaki\K75062_Central_NZ_Board_Maps\K75062_Bay_of_Plenty_Board_Map.mxd



4. The Board's Area

The Bay of Plenty Conservation Board area extends from the eastern and western part of the Bay of Plenty stretching in a ribbon like flow from west of Tauranga city, inland to the Waikato river, embracing Rotorua city and its volcanic lakes over to Whirinaki Te Pua-a-Tane, up through the conservation areas of Urutawa and Waiokea to the western Raukumaras, emerging at the coast near East Cape.

The forests of Whirinaki Te Pua-a-Tane, Raukumara and Kaimai Mamaku Conservation Parks are enjoyed by a wide range of recreational users from around and beyond the region. These ancient ranges are connected intimately with significant coastal forest and dune-lands that lie at the fringes of the Board's area and continue into the depths of the marine world through to various islands and beyond. Two marine reserves are located within the Board's rohe being Tuhua and Te Paepae o Aotea Marine Reserves.

Wetland features, associated vegetation and the geothermal wonders of the Rotorua Lakes and surrounding reserve network also provide unique features to an area that is as diverse in species as it is in people groups and communities.

This physical location represents our ongoing responsibility to iwi under the Treaty of Waitangi as the Board's area is homeland to the whanau, hapu and iwi of Pare Hauraki, Tauranga Moana, Te Arawa Federation and Mataatua Waka. Te Urewera was also part of this responsibility until more recently when treaty settlement resulted in Te Urewera being established as its own entity including governance by a Te Urewera Board.

"The wide dispersal of people through our diverse region has resulted in many conservation projects situated amongst many different landscapes land uses and ecosystems. These projects rely on the support and co operation of private business and land owners, the wider general community and the department of conservation. This presents both a great networking challenge and an opportunity to enhance conservation outcomes", Board Member, Rob Franklin

5.0 Board Activities

5.1 Board Meetings and Field Trips

Board Field Trips:

1. Moutohora Island

In December 2014 the Board met with the Joint Management Committee Te Taputoro a Toi in Whakatane following their respective meetings and this was followed by a visit to Moutohora Island, The Island is a special place to Ngati Awa and as the Board arrived on the island a powhiri was held to acknowledge this place and its significance. The Board was able to hear some of the stories of the island as well as gain an understanding of its unique cultural and biodiversity values and form a relationship with the committee members also. A representative of the Conservation Board sits on this committee, so it was an excellent opportunity for the Board to gain a sense of this place.

2. Karangahake Gorge and Talisman Mine

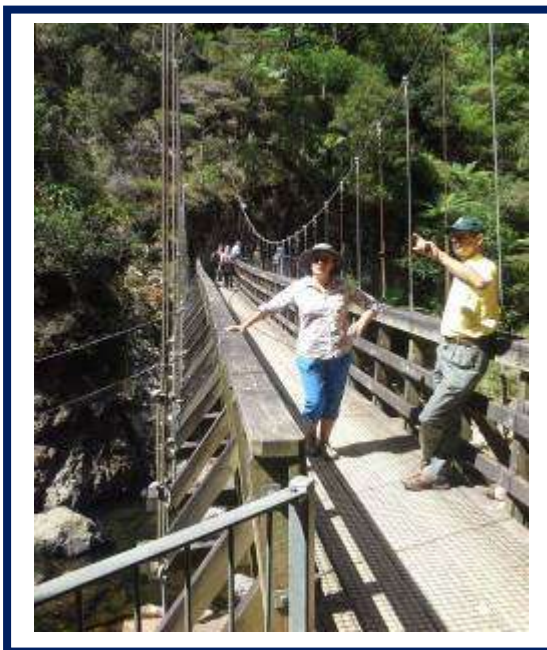
This visit began with a visit to the Talisman mine which lies within the Kaimai Mamaku Forest Park. The mine is over 100 years old with a crown minerals licence being held here for a number of years. Hauraki District Council recently issued a consent for bulk sampling and the Department provided approval for an access arrangement based on impacts on conservation values and the previous history with the applicant. Members of the previous Board were consulted regarding this access arrangement with two board members visiting the site and providing feedback into this process.

This visit was a good opportunity for Board members to familiarise themselves with the mine and the surrounding conservation values and to be more informed about the access arrangement. The Board also visited other key sites within the Karangahake gorge and were able to see first-hand some of the challenges and opportunities involved in the management of this place with increasing visitor numbers and the success of the Hauraki Rail Trail.

3. Tarawera and Okareka

A trip on Lake Tarawera was a highlight for the Board and the chance to be informed of the unique cultural history of this place by one of the Department's concessionaires. The Board were able to see sections of Stage 1 of the Tarawera Trail and then to visit its conclusion at Hot Water Beach where camping is provided. On the return journey discussion was also held on the wattle control work currently being undertaken in partnership with Regional Council as well as the ongoing successful partnership between the Department and Ruawahia 2B trust in managing the wilding pines on the Maunga. The final stop for the day was at Lake Okareka where the Board met members of the local community who manage the campground here which has been a very successful partnership between the Department and the community and a model that could be replicated elsewhere.

Photo taken by Steve Brightwell and Margaret Metcalfe, Partnerships Managers during Board visit to Karangahake



Board Meetings:

The Board met 5 times in the period 1 July 2014 – 30 June 2015.

These dates were:	
Meetings	
2-3 July 2014	Rotorua
10 September 2014	Rotorua
4 December 2014	Whakatane
11 March 2015	Tauranga
23 June 2015	Rotorua
Field Trips	
3 December 2014	Moutohora Island with Joint Management
10 March 2015	Karangahake Gorge
23 June 2015	Tarawera

5.2 Board Committees and Liaison roles

- Fish and Game Council Liaison – *W.Clark, K.Raureti*
- Neighbouring Board Liaison – *J.Lee* (East Coast/Hawkes Bay), *A.Mackersey* (Waikato), *P.Simpson* (Tongariro)
- Te Tapatoru a Toi Joint Management Committee representative– *R.Franklin*
- Whirinaki – Te Pua a Tane Conservation Management Plan – *K.Raureti, J.Doherty, W.Clark*
- Cycle Trails – *H.Lichtwark*
- Coastal Ecosystems, Forest and Dunelands – *W.Clark*
- Islands – Mokoia Island- *K.Raureti*
- Kaimai-Mamaku Forest – *A.Mackeresy*
- Community Conservation Partnership Fund- *K.Raureti, J.Lee*
- Opotiki District Council (Mayor John Forbes and CEO Aileen Lawrie) – *J.Lee*
- Whakatohea Trust Board – *J.Lee*
- Raukumara and Te Urewera - *J.Doherty*
- Tumurau Lagoon, Karaponga, Kokako population and Onepu Park – *B.Clark*

- Virtually on Track – *H.Lichtwark*
- Whakatane Kiwi Trust – *R.Franklin*



Photos taken by Dr. Julian Lee, Karangahake Gorge field trip and Margaret Metcalfe, Conservation Partnerships Manager (Acting) Kaimanatū Kahui Manutātaki

5.3 Other comments from Board Members

Heidi Lichtwark – Maketu, *“As CEO of Sport Bay of Plenty, I aim to bring relationships from active recreation that add value to conservation goals. In sport & recreation, we believe being active enriches lives and this has synergy with DOC’s strategic vision. The outdoor spaces in BOP are essential to maintaining our active culture – many of which are owned / managed by DOC. The ‘Virtually on Track’ project is a great example of these relationships in action”.* (summarised 7.9.2015 email)

Rob Franklin – Whakatane, *“I can only say we have at least touched on all the issues 6.0 – 7.0 detailed below. I and other board members are actively involved in most of the activities. To date, to my knowledge the Board has not engaged specifically with the Marine reserves. Additionally, as Te Urewera is no longer within our jurisdiction, I would be interested in the understanding new management structure and outcomes for that conservation area”.* (summarised 7.9.2015 email)

6. How the Board has Performed in Alignment to the Boards Response Letter to Annual Letter of Expectation from Associate Minister Wagner

6.1 Whirinaki Conservation Management Plan

Over the last year the he DOC Hamilton Planning Team has continued to work with the Board on developing the Whirinaki Conservation Management Plan (CMP), a commitment from Ngati Whare’s Treaty Settlement. Ngati Whare had previously set up a committee and has been working with the planning team on the drafting of this management plan. Good progress has been made in recent months in developing a management plan model that will enable Ngati Whare’s aspirations to be delivered in partnership with the Department.

The new Board has spent some time developing a clear understanding of its unique co-approval role in the development of this CMP and in providing a community perspective on it. The CMP sub-committee that was established although not actively involved to date are keen to engage further with Ngati Whare at the appropriate time and have planned a visit to Whirinaki Te Pua a Tane as part of their familiarisation with this place

6.2 Stewardship Land

The Board has taken an active role in reviewing the status of stewardship land within our Board area. There are about 130,000 ha across our Board area, much of it designated as ‘Stewardship’ almost 30 years ago. Department staff have provided the Board with an inventory and site location of stewardship land but information on current uses, condition of the land, and conservation values is scant. The latter are likely to have changed or will change enormously over time. There may well be areas that warrant stronger protection, (possibly warranting separate ‘Place’ in the new CMS), and which could be appropriate for opening to recreation or could be swapped with other land use. A good example of such land status change from Stewardship to Forest Sanctuary, and endorsed by the BOP Board, was undertaken this year to protect an unique Ottawa frog population which was endangered by logging and track activity. Further analysis of Stewardship Land, taking a regional approach, has been requested by the Board. A better understanding of these areas will enable informed discussion with interested Iwi, District Councils, Regional Boards and local community. This will help support the BOP Conservation Boards CMS development.

At the Board meeting in Tauranga the Board were given a presentation on the rare Ottawa frog population by John Heaphy – DOC Ranger, Services (Biodiversity) which included an explanation of the history of this site which had previously been a quarry. As all quarrying activity has now stopped the area is being restored as part of a community project with an aim of achieving the vision; “No 3 Rd Conservation Area” is protected in perpetuity with ongoing pest control to enhance native forest habitat and increase the population size of the resident Hochstetter frog population whilst providing for recreational opportunities in the lower catchment”.

As part of ensuring the long term viability of this rare frog population the Conservation Board was asked to support the change of land designation for the No 3 Conservation Area from Stewardship Land to Forest Sanctuary. The Board agreed and a motion was passed and carried.

6.3 Local and Regional Advocacy

Dr Julian Lee noted that he has been establishing a relationship with the Opotiki District Council and the Whakatohea Trust Board in his Board role and reported back on the meetings he has attended with them.

Anne Mackersey reports on her involvement as a member of the Kaimai Catchments Forum and also the Whakamarama Community Inc.

Simon Stokes (Bay of Plenty Regional Council Land Manager) in Eastern Bay of Plenty provided the Board with an overview of the Freshwater Futures Programme. The region has been broken down into nine water management areas - the first areas being addressed are Rangitaiki, Kaituna/Maketu and Pongakawa/Waitahanui. Community groups are being set up to help translate community values into freshwater objectives. The Board were asked to consider representation on these community forums for these water management areas. Board preference was for DOC staff to represent conservation interests on these forums and that the Board would like to remain informed about all of the forums as they are set up.

6.3.1 Conservation Management Strategy

The CMS sub-committee, comprised of Anne Mackersey, Julian Lee and Heidi Lichtwark met several times over the year with Helen Neale, Rotorua Partnerships Manager. The focus of this was to review the background work done on the previous draft CMS which was developed for 2008 – 2018 but did not reach the final approval stage.

Other relevant strategic documents developed by the Department were also discussed and how they might support the development of the next BOP CMS. A place based draft CMS monitoring work plan was presented to the Board for the next 3 years based on the Draft BOP CMS. It was agreed that this plan would enable the Board to become familiar with the places as well as reflect on what may need to change at these places in the new CMS. It was proposed that a Board member be assigned to each CMS monitoring section to lead.

6.3.2 Partnerships

William “Bill” Clark and Steve Brightwell Conservation Partnerships Manager reported they are working together on a volunteer based strategy with Service club providers, namely the New Zealand Lions Clubs. There are 48 clubs around New Zealand and 1500 members. The concept is DOC would work closely with NZ largest service club to support the volunteer programme. Lions Club members would billet Conservation

volunteers, matching people with the project. They will report back next meeting on project and logistics.

6.3.3 Community and Business Engagement

Helen Neale - Partnerships Manager presented maps to the Board showing the location of concessions within the Rotorua District. The Board agreed that this format would be useful for the Board for the rest of the Board's rohe. Following copies of the maps of concessions prepared for the other districts have now been prepared.

The Board received a concession presentation from Cheal Consultants, and representatives of the Bush Railway and Old Sawmill Trust members. The concession sought by the Bush Railway and Old Sawmill Trust was to establish and operate a historic bush railway and sawmill venture, cafe, a motor home 'camp ground' and establish a caretaker's residence within the Department of Conservation administered Patetere Scenic Reserve, Cecil Rd, Mamaku for a period of at least 30 years. The general consensus of the Conservation Board members was to support the Bush Rail Concession as there would be significant conservation gains for the Patetere Scenic Reserve and the community. It was felt that this project was consistent with the intent of the CMS and would provide both locals and visitors a variety of on-site environmental experiences.

7. LIAISON

7.1 Minister of Conservation.

Phil Simpson, Anne Mackersey and Dr Julian Lee attended the presentation at Kiwi Encounter with the Minister re the successful CCPF application for Kiwis for Kiwis. The minister acknowledged the support of BNZ as a sponsor and the community in making it a success.

Chair Ken Raureti attended the Conservation chairs conference in November, the association Minister Nicky Wagner attended the entire meeting, listening and engaging with the Chairs. The main focuses for the Conservation Boards are Conservation Management Strategies. Three boards have already had their CMS signed off - they are Northland, Auckland and Waikato.

7.2 New Zealand Conservation Authority

Chair Ken Raureti attended the NZCA meeting in October held in Taupo. He spoke of the visit to the International Golf Course and how they had built an excluder fence around the golf course to keep out pests and that native birds had returned to the site. The visit also included wetlands in Turangi and the site where the Haka was first created on the shores of Opotika. There is a focus around Treaty settlements and treaty partnerships and working with the iwi and giving them the opportunity to attend events and meetings. The Ministers has an expectation of community connections and how to maximize younger communities engagement in conservation.

Warren Parker Chair NZCA attended the June 2015 meeting of the Board and provided an update to the Board on NZCA activities The Board were thanked for their contributions to conservation and he noted that the NZCA will receive three CMS's at their August meeting and that the East Coast and Hawkes Bay CMS's are now underway.

7.3 Other Conservation Boards

The Board agreed to assign a Board member to liaise with neighbouring Conservation Boards. The following liaison roles have been accepted:

- Dr Julian Lee East Coast Hawkes Bay,
- Phil Simpson Tongariro Taupo
- Anne Mackersey Waikato

Dr. Lee attended two meetings in Gisborne of the East Coast/Hawkes Bay during the year in his role as Board liaison. A key part of this has been keeping informed with progress on their CMS which started earlier in the year and in particular in relation to the large common boundary the Board shares with ECHB Board area. Sharing some of the processes and learnings from these meeting has also been valuable.

Anne Mackersey attended the Waikato Conservation Board Meeting in May 2015 and provided feedback to the Board. This liaison with the Waikato Conservation Board highlighted the clear direction the Board has for monitoring and reporting that comes with an up to date CMS and equally the clear direction for the department staff. Whilst each Board has responsibilities to their regions there are issues such as whitebait viability and the Boards application of Section 4, Conservation Act that are relevant to our Board as well. An awareness and greater knowledge of the neighbouring Kauri dieback threat was useful and is important as it creeps closer to our doorstep.

7.4 Fish and Game Liaison

The previous Board had a strong working relationship with the Eastern Fish and Game Council and this has continued with the appointment of Ken Raureti and Bill Clark as the Board representatives to Council meetings. The Board has also had several presentations from Fish and Game staff on their role and responsibilities and the unique “sibling” relationship with the Department and this will relationship will continue to strengthen as these interactions.

8. Summary to 2015 to 2016 work planning up to date

- Huia Lloyd - DOC Pou Tairangahau. Huia will conduct a workshop for the Board members regarding the implications of the Treaty of Waitangi Principles and their impact on the role and work of the board.
- Meeting dates:
 - 2 September, 2015 Murupara and Whirinaki Te Pua-a-Tane Park Field trip
 - 4 December, 2015 Taupo, Combined Board meeting with Tongariro Taupo Board and schedule meeting with Associate Minister Nick Wagner
 - 2016 meeting date will be determined after receipt of Annual Letter of Expectation

