



Department of  
Conservation  
*Te Papa Atawhai*



Bay of Plenty Conservation Board  
Te Poari O Te Papa Atawhai O Te Rohe O Te Waiariki

A scenic landscape photograph showing a dense forest of ferns in the foreground, a body of water in the middle ground, and mountains in the background under a blue sky with light clouds. Two people are visible walking on a path in the lower part of the image.

# **BAY OF PLENTY CONSERVATION BOARD ANNUAL REPORT 2019/2020**

# Bay of Plenty Conservation Board

## Annual Report

### 2019/2020

Presented to the New Zealand Conservation Authority  
pursuant to Section 6 (O) of the Conservation Act 1987

Published by  
Bay of Plenty Conservation Board  
c/- Department of Conservation  
PO Box 528, 37 Motutaiko Street  
Taupo

Cover Photo: Tarawera Trail

# Contents

1	Chairperson’s Report .....	4
2	Introduction.....	6
3	Conservation Board Region .....	7
	3.1 Conservation Features of the Area .....	9
	3.2 Conservation Issues .....	9
4	Board Functioning.....	10
	4.1 Board Functions under Section 6M of the Conservation Act 1987 .....	10
	4.2 Powers of the Board under Section 6N of the Conservation Act 1987 .....	10
	4.3 Board Functions under Section 30 the National Parks Act 1980 .....	10
	4.4 Board Membership .....	10
	4.5 Board Meetings .....	11
	4.6 Attendance .....	11
	4.7 Field trips and Site Inspections .....	12
	4.8 Board Committees and Representation .....	12
	Conservation Management Strategy Sub-committee .....	13
	Stewardship Land Sub-committee .....	13
	Te Tapatoru ā Toi Joint Management Committee .....	13
	4.9 Department Involvement in Board Meetings.....	14
	4.10 Special Events.....	14
	4.11 Annual Work Plan .....	14
	4.12 Advice and Advocacy .....	14
	4.13 Other Conservation Board Liaison.....	15
	4.14 Authority Liaison.....	15
	4.15 Department Advice.....	15
	4.16 Community Advocacy and Involvement.....	15
	4.17 Community Visibility .....	15
	Maanaki Kaimai Mamaku Forum.....	15
	Te Whare Okioki .....	15
Appendix 1	– Board Member Profiles.....	16
	Members Profiles.....	16
	Ken Raureti (Chair).....	16
	Steve Morris .....	16
	Julian Lee .....	16
	Anne Mackersy (Deputy Chair) .....	16
	Mark Copeland .....	16
	Dayle Hunia .....	16
	Phil Ross.....	16
	Rachel Pinn .....	16
	Hugh Sayers .....	16

Gina Mohi .....	17
Appendix 2 –Annual Work Plan .....	18
Bay of Plenty Conservation Board Work Programme.....	18
Work Programme Overview.....	18
Part A: Regional Work Programme.....	19
Part B: General Expectations .....	23



Ohiwa Harbour

# 1 Chairperson's Report

E te Minita o Te Papa Atawhai, nei ra te mihi, te mahana ki a koe i runga i to taunga hou.

Tēnā ra koe i runga i nga tini āhuatanga o te wā. Ahakoa nga ngaru nunui i papaki mai nei, kei te kaha pupuri ki te ōhākī a o tatou tupuna “kia kaha, kia toa, kia manawanui”. Nō reira, tangihia rātou mā kua haere ki tua o te ārai. Kua waihongia mai e rātou he tohu, hei ārahi mai.

Kia tika te hoe o to tatou waka ki te pae tawhiti ki te tōnuitanga.

Tihe mauri ora.

On behalf of the Bay of Plenty Conservation Board, it is a pleasure to present this report on the past year for the Board.

I would like to acknowledge and thank my fellow Board members for their contributions, korero and friendship. They deserve significant recognition for their commitment to their roles and for the work they do, especially around other vocations, their whanau and competing commitments. Their dedication to the Board and to the conservation outcomes we collectively seek to achieve is a credit to them all.

We have had some continuity across the membership of the Board this year, but farewelled Steve Morris at the end of his term.

Our Board has a solid foundation of knowledge, experience and governance navigation, capability, and a confidence of each other.

We have been working to keep forging positive relationships with Iwi, and to ensure we have the expertise of mātauranga ā Iwi, combined with the experience, technical knowledge and resources of the Department to weave a korowai of sustainable future practice in everything we advocate for.

An increasing pressure point within our rohe, is the cumulative demands of a growing population, increasing tourism numbers, and more and bigger events that are being placed upon the infrastructure, our carparks, trails, toilet/waste management facilities, huts, waterways, mountains and forests. Covid-19 has significantly changed our context here, and it will be interesting to see what the future holds and how we manage pressures going forward.

We continue to have some tensions that need to be balanced within our Conservation Management Strategy (CMS). Concession triggers, concession monitoring and the risks or opportunities cascading within this area have provided some challenging considerations. For example, the alignment or otherwise with Iwi aspirations and Treaty Settlements, or grazing, educational, or other concessions on Stewardship Lands.

We have had a growing focus on marine advocacy this year and are growing our knowledge in this area.

The importance of field trips cannot be understated in establishing a connection to the range of places that make up the Board's rohe, and connectivity with the staff working within our takiwā. We had an informative trip to Lake Okataina this year to look at the work being done to protect this whenua from pests.

Our Board continues to work in a positive constructive manner with our Department offices and staff, with a developing relationship of mutual confidence and trust. While there have been a number of staff changes, we continue to work on how we can better advocate for good conservation outcomes.

I would like to convey my thanks to the staff of the Department. They have made themselves available, they have extended beyond ordinary realms, engaged with the board in a positive and constructive manner, and continued to provide the Board with knowledgeable support.

Whilst I have not been reappointed to the Board, I would like to wish the Board all the best for the future.

Naku noa nā

A handwritten signature in blue ink, appearing to read 'Ken Raureti'.

Ken Raureti Chairperson  
**BOP Conservation Board**

## 2 Introduction

This is the 2019 -2020 Conservation Board Annual Report. Section 6(O) of the Conservation Act requires conservation boards to provide the New Zealand Conservation Authority (the Authority) with an annual report as soon as practical after 30 June each year. In recognition of this requirement the Bay of Plenty Conservation Board submits this annual report.

Conservation boards are appointed by the Minister of Conservation under section 6(P) of the Conservation Act 1987. Board functions are outlined in section 6(M) and the powers, which enable the conservation boards to carry out those functions, are under 6(N) of the Act.

Conservation boards are independent advisory bodies, established by statute. They represent the community and offer interaction between communities and the Department of Conservation (the Department), within their area of jurisdiction.

Conservation boards have several statutory roles under various Acts including:

- the recommendation of the Bay of Plenty Conservation Management Strategy (CMS) to the Authority for approval
- advising the Department and the Authority on how conservation management strategies and plans will be put into practice
- reporting on the implementation of the CMS
- the approval of conservation management plans
- the recommendation of national park management plans to the Authority for approval
- advising the Department and Authority on conservation matters, and proposed changes to status of land of national and international significance
- liaising with the regional Fish and Game Council on conservation matters
- carrying out other powers delegated by the Minister of Conservation, the Conservation Act or any other Act.

Conservation boards also have several functions under section 30 of the National Parks Act 1980. These functions include recommending the review or amendment of national park management plans and recommending approval of these plans by the Authority.

### 3 Conservation Board Region

The Bay of Plenty Conservation Board (the Board) area is complex, diverse, extensive and rich in history. The richness and values of the PCL within this rohe is reflective of the first inhabitants of the Mataatua, Tainui and Te Arawa waka that through to this day, continue to reside, harvest and utilise the resources of the environment. The Board's area of jurisdiction covers the area from Orokawa Bay in the west to Cape Runaway in the east and inland to the forests of Whirinaki Te Pua-a-Tāne, Raukumara and Kaimai Mamaku Conservation Parks. These ancient ranges are connected intimately with significant coastal forest and dune-lands that lie at the fringes of the Board's area and continue into the depths of the marine world through to various islands and beyond.

Whilst the boundary lines drawn on the map show the Board's area is quite stencilled in takiwā, rohe boundaries for iwi are a bit more complex. So, through an iwi generic landscape viewfinder, the broader area is defined as Mai Ngā Kuri a Whārei ki Tihirau, from Waihi/Bowentown/ Western Bay of Plenty, to Cape Runaway, tae atu ki a Tūwatawata, Whirinaki te Pua-a-Tāne, through to Tūwatawata and the Whirinaki, mai Maketu ki Tongariro, from Maketu to parts of the Tuwharetoa, tae atu ki e Pare Hauraki, and stretching over to Tokoroa, Matamata, Waharoa and Paeroa generally.

This physical location represents our ongoing responsibility to iwi under the Treaty of Waitangi as the Board's area is homeland to the whānau, hapū and iwi of Pare Hauraki, Tauranga Moana, Te Arawa and Mataatua Waka. Within the region Treaty Settlements are at varying stages of pre-treaty settlement to post-treaty settlement. Department staff and iwi have been initiating discussions around co-governance of a number of significant areas of Public Conservation Land in anticipation of these arrangements following settlement.

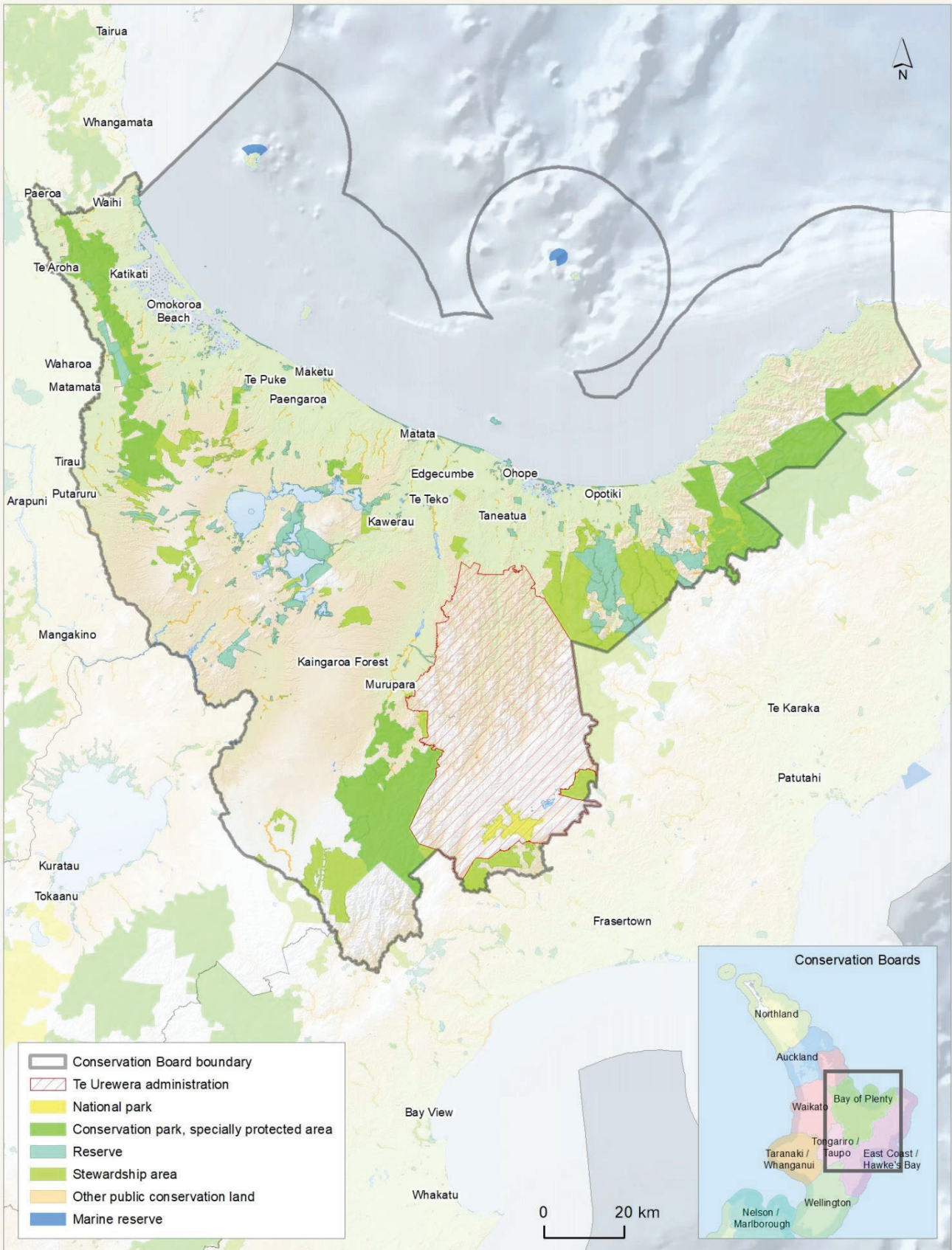
Two marine reserves are located within the Board's rohe being Tūhua and Te Paepae o Aotea Marine Reserves. The area extends out to the 12-nautical mile limit with respect to coastal and marine issues, and out to the 200-nautical mile limit. With respect to protected species, wetland features, associated vegetation and the geothermal wonders of the Rotorua Lakes and surrounding reserve network also provide unique features to an area that is as diverse in species as it is in people groups and communities.

From the many mountains, volcanoes, podocarp forests and hinterlands, from the fresh water tributaries, geothermal features, lakes and freshwater systems, through to the mangroves, estuaries and the great ocean of Toi, therein lies the diversity, complexities, and the richness of our Board's area.

The Bay of Plenty region hosts a large range of water catchments and lake reservoirs that flow out to the coastal ecosystems and the Pacific Ocean. Lastly, a significant boundary is shared with the East Coast/Hawkes Bay Conservation Board along the Raukūmara Ranges.

There are over 50 active community groups within the region who work alongside the Department and the Board, which adds an interesting complexity given the number of people contributing positively to conservation. Right across the Bay of Plenty, hundreds of volunteers gave up their time, during 2018/19, to support conservation efforts. These volunteers undertook more than the equivalent of around 2000 work days of mahi during the year. We have been fortunate to have continued support from the Bay of Plenty Regional Council, who also help much of the effort of our conservation groups.





## Bay of Plenty Conservation Board

NZGD 2000 New Zealand Transverse Mercator  
 Not for publication nor navigation | 1:1,200,000  
 Crown Copyright Reserved | LINZ CC-BY, © Crown  
 DOC, Geospatial Services | 16/11/2020

New Zealand Government

Map 1 – Bay of Plenty Conservation Board

### 3.1 Conservation Features of the Area

The total area of the Bay of Plenty Region comprises of **2,602,857** ha. Of this total, approximately **319,501** ha is contained within the boundary of the Bay of Plenty Conservation Board's area of jurisdiction.

The main features of Public Conservation Land and Waters within the Board's boundaries are:

- Kaimai Mamaku Conservation Park – 40,000 ha
- Whirinaki Te Pua-a-Tāne – 56,000 ha
- Raukūmara Conservation Park – 59,312 ha
- Scenic Reserves – 47,381 ha
- Historic Reserves – 70 ha
- Recreation Reserves – 420 ha
- Ecological Areas – 312 ha
- Stewardship Areas – 108,413 ha
- Marine Reserves – 2,330 ha

### 3.2 Conservation Issues

The large number of issues which are of interest to the Board include:

- Stewardship Land
- Relationship with Treaty Partners
- Marine Protection
- Ecosystem management and management of plant and animal species such as kiwi, kokako and whio
- Biodiversity
- Management of pest species including wilding pines, dama wallabies
- Management of recreational facilities in particular around high pressure sites
- Management of historic sites
- Biosecurity ie Kauri dieback.

# 4 Board Functioning

## 4.1 Board Functions under Section 6M of the Conservation Act 1987

The functions of the Board are:

- 1) To recommend the approval by the Authority of conservation management strategies, and the review and amendment of such strategies, under the relevant enactments
- 2) To approve conservation management plans, and the review and amendment of such plans, under the relevant enactments
- 3) To advise the Authority and the Director-General on the implementation of conservation management strategies and conservation management plans for the area within the jurisdiction of the Board
- 4) To advise the Authority or the Director-General
  - a) On any proposed change of status or classification of any area of national or international importance; and
  - b) On any other conservation matter relating to any area with the jurisdiction of the Board
- 5) To liaise with any Fish and Game Council on matter within the jurisdiction of the Board
- 6) To exercise such powers and functions as may be delegated to it by the Minister under this Act or any other Act.

## 4.2 Powers of the Board under Section 6N of the Conservation Act 1987

- 1) Every conservation board shall have all such powers as are reasonably necessary or expedient to enable it to carry out its functions.
- 2) Without limiting the generality of subsection (1), each conservation board may –
  - a) Advocate its interests at any public forum or in any statutory planning process; and
  - b) Appoint committees of members and other suitable persons, and delegate to them functions and powers.
- 3) The power conferred by subsection (2)(a) shall include the right to appear before courts and tribunals in New Zealand and be heard on matters affecting or relating to the Board's functions.

## 4.3 Board Functions under Section 30 the National Parks Act 1980

There are no national parks within the Board's region.

## 4.4 Board Membership

There were 10 Board members for the reporting year 2019/20 appointed by the Minister of Conservation. Ken Raureti was confirmed as Chairperson and Anne Mackersey was confirmed as Deputy Chairperson.

Three members terms of office expired on 30 June 2019 – Anne Mackersey, Mark Copeland and Thomas Malcolm. Anne Mackersey and Mark Copeland were reappointed for a further term and a new board member Gina Mohi was appointed.

The following table lists the membership of the Board between 1 July 2019 and 30 June 2020 and their term of office.

Board member	Area	Term start	Term end
Ken Raureti	Rotorua	1/7/2011	30/6/2020
Steve Morris	Papamoa	1/7/2014	30/6/2020
Julian Lee	Opotiki	1/7/2014	30/6/2020
Anne Mackersey	Whakamarama	1/5/2014	30/6/2022
Mark Copeland	Rotorua	1/7/2016	30/6/2022
Dayle Hunia	Whakatane	15/8/2017	30/6/2020
Phil Ross	Tauranga	1/7/2017	30/6/2020
Rachel Pinn	Tauranga	1/8/2018	30/6/2022 (1 + 3 yr)
Hugh Sayers	Tauranga	1/8/2018	30/6/2021
Gina Mohi	Rotorua	1/7/2019	30/6/2022

Table 1: Board Membership

## 4.5 Board Meetings

The Board held 4 meetings during the reporting period. Venues for the meetings vary each year to ensure a wide coverage and enable members of the public in the district to attend meetings and access the Board. The 2019-20 scheduled meetings were interrupted in early 2020 due to Covid-19.

Board meeting date	Meeting location and venue
21 August 2019	Rotorua DOC office
19 October 2019	Holdens Bay Holiday Park
12 February 2020	Parklands Holiday Park, Turangi (Joint meeting with Tongariro/Taupo Conservation Board)
9 June 2020	Virtual Online
15 June 2020	Marine Workshop - Virtual online

Table 2: Board meeting dates and location

## 4.6 Attendance

The table below summarises the number of Board meetings attended by members out of the total number of meetings held during the year. Members attended other meetings and events in their role as Board members, including subcommittee meetings and representative roles.

Board member	Board meetings
Ken Raureti	4/4
Steve Morris	1/4
Julian Lee	4/4
Anne Mackersey	3/4
Mark Copeland	3/4
Dayle Hunia	2/4
Phil Ross	3/4
Rachel Pinn	3/4
Hugh Sayers	4/4
Gina Mohi	1/4

## 4.7 Field trips and Site Inspections

Field trips are an excellent opportunity for Board members to become more aware of conservation issues within their region.

Field trip date	Field trip destination and purpose
November 2019	Lake Okataina – Visiting Pest Exclusion Plots to see the impacts wallaby and deer population are having on the environment
February 2020	Ketetahi Carpark, Whakapapa Ski Area, Sir Edmund Hilary Outdoor Centre (Joint Field Trip with Tongariro/Taupo Conservation Board)

## 4.8 Board Committees and Representation

Membership of Board committees was reviewed in July, at the beginning of the reporting year.

Committee name	Date established	Members
Conservation Management Strategy	2015	Anne Mackersey Julian Lee Dayle Hunia Phil Ross Hugh Sayers Rachel Pinn
Te Tapatoru ā Toi Joint Management Committee	2005	Dayle Hunia
Stewardship Land Committee	2017	Julian Lee Anne Mackersey Ken Raureti

Table 5: Committees

### **Conservation Management Strategy Sub-committee**

The Board's main area of focus this year has been getting the draft Conservation Management Strategy (CMS) through to notification. For much of the year, our draft CMS had been with Department planners and then out for consultation with tangata whenua. In June, the Board reviewed the latest version of the document after further input from the Department's planning, legal and consultation processes. The Board undertook some additional work on the CMS milestones and their alignment with national strategies (eg New Zealand Biodiversity Strategy 2020) and New Zealand's commitments to biodiversity and species conservation under multi-lateral environmental agreements (e.g. Convention of Biological Diversity). The Board acknowledges the commitment and support of the planning team in working closely with the Board to produce the draft CMS, and in particular sharing robust discussions that challenged presumptions about what should or should not be included in the BOP CMS prior to notification.

Considerable effort was put into better understanding of the Department's role in the Coastal and Marine Place, specifically alignment between the Department, the Resource Management Act, Regional Coastal Plans and the New Zealand Coastal Policy Statement (which guides local authorities in their day-to-day management of the coastal environment). Constructive discussions among board members and Department staff have set a good platform from which to further explore opportunities for the Department to achieve its marine and coastal biodiversity goals.

The draft CMS is now with the Department's internal legal team and is scheduled for notification in November - a huge milestone!!

### **Stewardship Land Sub-committee**

The continuing role of this sub-committee has been to provide oversight and feedback on Stewardship Land, which constitutes a large proportion of public conservation land within the Bay of Plenty region, particularly the significance of this land category within the outcomes sought by the CMS for protection, restoration, and enhanced biodiversity.

The Board remains concerned at the threat posed to Stewardship Land from development and services endeavouring to meet demands of the regions rapidly growing population. The Board is mindful of the fact that some of this land, in due course, will be protected through the Treaty Settlements process.

Therefore the Board will continue to push for greater clarity on protecting conservation benefits of both small and large land areas categorised as Stewardship Land within the Bay of Plenty Conservation Board area. The emphasis on the need to focus on the CMS has diverted specific work in this area, to that most relevant for inclusion in the CMS. The Board remains committed to the focus on the region's top five Stewardship Land areas as currently positioned on the national list. And with the CMS close to notification, review of Stewardship Land across the Boards area will be a standing item on the Boards agenda for the coming year, and where appropriate advocate to ensure the ecological value of specific areas is protected.

### **Te Tapatoru ā Toi Joint Management Committee**

Te Tapatoru ā Toi Joint Management Committee continues to provide leadership and direction for the active management of Moutohorā, Ōhope and Tauwhare Pā reserves in the Ngāti Awa rohe. The Committee looks forward to welcoming Nandor Tanchoz as the newly appointed community representative at their next meeting.

Te Tapatoru ā Toi has welcomed the announcement of the Korehāhā Whakahau Predator Eradication Project that is being led by Te Rūnanga o Ngāti Awa and includes the Ōhope Scenic Reserve. The initial aim of the \$5.6 million-dollar project is to get rid of predators, starting with possums, across a 4,700ha area covering Whakatāne and Ōhōpe, benefitting biodiversity and boosting employment opportunities.

This Iwi-Crown approach aims to restore the Raukūmara forest through active biodiversity management and will boost employment opportunities for whānau. The Project will receive \$34 million funding over the next four years.

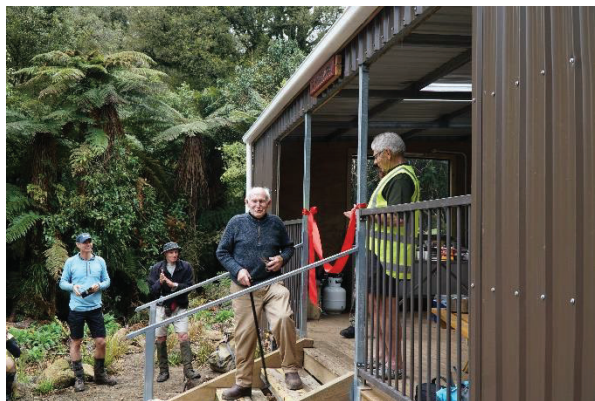
## 4.9 Department Involvement in Board Meetings

Department staff regularly attended throughout the year. Presentations were given to the board by the Department on:

- New NZ Biodiversity Strategy.
- Te Whanau a Apanui Agreement Update (in Principle)
- North Island Forest Restoration Update. Identified Raukumara as a priority. Kaimai Mamaku: Pest Control and Kauri Protection
- Whirinaki Pest Control Operation
- Whitebait Regulation Changes

## 4.10 Special Events

On 12<sup>th</sup> October 2019, Te Whare Okioki was officially opened in the Kaimai Mamaku Conservation Park. Ken Raureti, Anne Mackersay and Hugh Sayers attended the opening,



Cutting the Ribbon at the official opening



Ken Raureti, Board Chair speaking at opening

Conservation Week activities in Whakatane were attended by several board members including Ken Raureti, Julian Lee, Anne Mackersey, Mark Copeland and Dayle Hunia. Ken Raureti also presented the “Present Perspective” at the event.

## 4.11 Annual Work Plan

Please refer to Appendix 2 for the full Board Annual Work Programme.

## 4.12 Advice and Advocacy

All Board members have responsibility for liaising with other groups when opportunities arise, and some members have specific roles in liaison. The Board appointed various members to liaise with other groups and agencies.

Nominated Board liaison members have continued their contacts with the Boards of adjoining Conservation Board regions, namely East Coast-Hawkes Bay (ECHB), Tongariro -Taupo and Waikato, through reciprocal attendance of respective Boards liaison representatives and interchange of meeting agendas and meeting minutes. Information sharing and discussion across many common issues for both Boards continues to be of value, and their reports noted at respective Board meetings. Specifically; in the case of ECHB the role and experiences of Board members in guiding the development of their respective CMS's, the processes defining Places, classification of Stewardship Land, management of pests common to both Board regions. Partly due to Covid-19 no specific meetings were attended in this reporting year.

Board member	Group/agency/organisation
Ken Raureti	Eastern Fish and Game Council

#### 4.13 Other Conservation Board Liaison

Board member	Board
Anne Mackersey	Waikato Conservation Board
Julian Lee	East Coast Hawkes Bay Conservation Board
Mark Copeland	Tongariro Taupo Conservation Board

Table 7: Board liaisons and representatives

#### 4.14 Authority Liaison

Mark Brough has been the Boards New Zealand Conservation Authority liaison person for the year and his advice and input has provided a valuable insight into both the work of the Authority and national issues in general, offering a strategic view on these matters.

#### 4.15 Department Advice

The Board provided advice to the Department on the following issues:

- Stewardship Land reclassification
- Conservation Management Strategy review
- Bay of Plenty Regional Council representation
- Marine Advocacy

#### 4.16 Community Advocacy and Involvement

The Board believes that working with conservation organisations and members of the public is very important. Meetings were held in different parts of the Bay of Plenty region and opportunities for the public to attend Board meetings were advertised.

Board has a standing invitation for members of the public to attend their public forum, and the Board welcomes public to attend all board meetings.

#### 4.17 Community Visibility

The Board maintains a presence on the Department's website. Updates from the Board were provided throughout the year on activities undertaken.

##### Maanaki Kaimai Mamaku Forum

With a new co ordinator at the helm the Forum has re-established itself and gained huge momentum over the past 12 months. A Steering Group is established representing different stakeholder groups and three project groups, biodiversity, water and people have set their strategic direction. The Bay of Plenty Regional Council has ear marked \$240K in their 2019/20 Annual Plan for pest control in the Kaimai if it can be matched by DOC and Waikato Regional Council. The Forum were unfortunate to be declined their PF2050 bid submitted in June 2019. The biodiversity decline of the Kaimai Mamaku area is of real concern to the local communities.

##### Te Whare Okioki

This is a new hut project in the mid Kaimai area. It is an initiative of the Kaimai Ridgeway Trust, an association of outdoor recreation clubs from all areas using the Kaimai Range. Their focus is on back country recreation. The Bay of Plenty Deer Stalkers have provided volunteers to build the hut and overseen design and project management. It is built with aerated concrete blocks (to prevent the fire risk) and due for finishing early in the second half of 2019. This will be a game changer for this mid Kaimai area.



# Appendix 1 – Board Member Profiles

## Members Profiles

### Ken Raureti (Chair)

Mr Raureti is a self-employed business consultant and mediator. He has professional and strategic leadership and governance experience, from roles such as Manager/Advocate for EMA, Chief Mediator of the Department of Labour's Mediation Service, and chairperson on several Boards and Trusts. He has extensive networks and professional relationships within the business community, tourism sector, iwi authorities, local authorities and government departments. His outdoor recreation interests are hunter-gathering, tramping and fishing. He is of Ngāti Rangitihī, Ngāti Whakaue, Ngāti Pīkiao, Te Arawa, Whakatōhea, Ngāti Ruatakena and Ngāpuhi nui tonu iwi.

### Steve Morris

Mr Morris is a Tauranga City Councillor (Mt Maunganui – Papamoa Ward). He has extensive community involvement through work and community support and is the current chair of TCC's Policy Committee, Hearings Panel, and Waiāri Kaitiaki Advisory Group. He has a master's degree in Resource and Environmental Planning and enjoys tramping the Kaimai Ranges and Te Arawa Rotorua Lakes. He is of Ngāti Raukawa (Ngāti Huri) iwi.

### Julian Lee

Dr Lee is now retired from a career in science with a biological chemistry background, A Massey University graduate, his career started with the Department of Scientific and Industrial Research, After the formation of the Crown Research Institutes, he had roles in AgResearch as a senior scientist and Group Leader, Chief Scientist at Crop and Food Research (2005-2007) and was a former Group Manager Strategy at Plant and Food Research (2007-2009). He has established university and CRI science networks and wide experience in research leadership and governance, with skills in science in negotiation, consensus building and strategic thinking. His outdoor recreation interests are fishing, planting, gardening and golf.

### Anne Mackersey (Deputy Chair)

Mrs Mackersey is a farm manager in Whakamārama. She has trained in landscape architecture and has a lifelong interest in land management and environmental practices. She is an active member on several local community groups.

### Mark Copeland

Mr Copeland has over 25 years legal experience, including in resource management, property and conservation. He is also a governance consultant and expert rural mediator. He has enjoyed a lifetime interest in the New Zealand outdoors

### Dayle Hunia

Ko Pūtauaki te maunga, ko Ngāti Awa te iwi. Dayle Hunia runs an environmental consultancy that is based in Whakatāne. She currently serves on a range of boards including the Environmental Protection Authority and Te Tapa Toru a Toi. Dayle also holds governance roles for Omataroa Rangitaiki No2 Trust and the Rurima Islands. Dayle is married to Hurricane and they have three kids and one kiwi averted dog.

### Phil Ross

Dr Ross is a Senior Research Fellow and marine ecologist at Waikato University, and has extensive knowledge of Bay of Plenty coastal and marine environments and ecology. His strengths lie in the interpretation of scientific information and conveying science and conservation issues to a diverse public audience.

### Rachel Pinn

Ms Pinn is an independent director with skills in strategic planning and policy development. She has a passion for the New Zealand environment and holds a Bachelor of Resource Management and a Master of Applied Science in Transport Science.

### Hugh Sayers

Mr Sayers is project manager for the Motiti Rohe Moana Trust, and has had a lengthy involvement in matters relating to the *Rena* disaster as an advocate for marine protection and the marine environment. He has a

strong understanding of Māori relationships with the land and sea and is involved in several Waitangi Tribunal claims in the Bay of Plenty.

**Gina Mohi**

Mrs Mohi has worked in the resource management and environmental planning for 15 years. Gina is employed by the Bay of Plenty Regional Council as Pūtaiao Mātauranga, Science and Strategy. She holds a Master's degree with a double major in Environmental Planning and Earth Sciences. She has affiliations to Ngāti Rangiwewhi, Te Whānau-ā-Apanui, NgāiTai, Te Whakatōhea and Te Arawa.

# Appendix 2 –Annual Work Plan

## Bay of Plenty Conservation Board Work Programme 1 July 2019– 30 June 2020

### Work Programme Overview

This Bay of Plenty Conservation Board work programme has been developed in response to the Letter of Expectation from the Minister of Conservation. It is structured in three parts, namely:

- Part A: Planned Board activities aimed at meeting the regional Work Programme contained in the letter:
  - Review/development/monitoring of statutory management plans including Conservation Management Strategies (CMS);
  - Advice relating to stewardship land;
  - Other statutory functions for the Board;
  - Advocacy; and
  
- Part B: Planned Board activities aimed at general expectations contained in the letter:
  - working with the Department;
  - taking account of the Ministerial priorities for the Department as contained in the Department's Four-year Plan;
  - working with adjoining Boards and the NZCA;
  - understanding the Board's contribution to giving effect to the principles of the Treaty of Waitangi;
  - general engagement with the community, including raising the profile of the Board; and
  
- Part C: risks/issues from the Board's perspective, and opportunities for conservation growth that are not covered above.

1. Review / development of statutory management plans including Conservation Management Strategies (CMS)

1.1 Board Objective:

The Board will continue to work on reviewing the Bay of Plenty CMS and will work towards recommending the approval of the draft by the NZCA with or without amendments

**Planned Board Activities, Success Measures and Key Milestones**

	Action	Progress Commentary
A	Work with the Operations and Planning team on completion of a draft CMS ready for notification in February 2019	A lot of work has been carried out throughout the year and the Draft CMS is now with the Department's internal legal team and scheduled for notification in Nov 2020.
B	Take part in the hearing process for the draft CMS	Still work in progress
C	Liaise with neighbouring Boards on issues of mutual interest in relation to the CMS	No meetings held in this financial year, partly due to Covid-19 however kept in touch with Tongariro/Taupo, Waikato, and East Coast Conservation Boards
D	Continue to receive updates on stewardship land as it relates to the CMS process	Priorities, issues and opportunities carried forward into CMS including top 5 priority areas.

1.2 Board Objective:

In conjunction with the Department, the Board determine priorities for implementation of the approved Whirinaki Te Pua-a-Tane Management Plan.

**Planned Board Activities, Success Measures and Key Milestones**

	Action	Progress Commentary
A	Work with the Department to agree on priority implementation actions for the CMP	
B	Receive reports on the implementation of these actions	
C	Maintain relationship with Ngāti Whare and have an annual meeting with them	Sound relationships have been established and maintained which is mutually respectful

### 1.3 Board Objective:

Continue to grow the Board's knowledge of the coastal and marine areas within the Bay of Plenty and ensure their values are inclusion in statutory documents.

#### Planned Board Activities, Success Measures and Key Milestones

	Action	Progress Commentary
A	Receive regular updates from relevant experts to increase the Board's awareness on the threats to coastal and marine ecosystems	Board is better informed
B	Advocate for greater awareness of marine ecosystems and community led marine protection in the BOP	Board capacity has grown

## 2 Stewardship Land

### 2.1 Board Objective

The Board will provide the Minister and Department with advice on priorities for reclassification of stewardship areas that require increased protection because of their significant conservation values.

#### Planned Board Activities, Success Measures and Key Milestones

	Action	Progress Commentary
A	Consider and make recommendations on proposed BOP land status changes that arise	Board continues to build it knowledge
B	Advocate for stewardship land parcels nominated for status changes as part of the national process	Board is currently conducting a review of stewardship land parcels, their location and their values
C	Receive regular updates on progress of the national plan	Stewardship land (by area of priority in BOP region) briefing is included as Agenda item for review at each Board meeting and appropriate to the area BOPCB is sitting.

### 3 Other Statutory Functions<sup>1</sup>

#### 3.1 Board Objective:

The Board will nurture ongoing working relationships with Fish and Game Councils regarding issues of mutual interest within the region.

##### Planned Board Activities, Success Measures and Key Milestones

	Action	Progress Commentary
A	Confirm appointment of Board liaison to the Eastern Fish and Game Council and exchange information	Ken Raureti to continue as Liaison, Hui's have been attended and the sharing of information continues
B	Board liaison to attend at least 2 meetings of the Council and provide Board updates	Ken Raureti has attended Hui's and provided feedback and reports to the Board
C	Request attendance of EFG Manager at Board meetings where matters of mutual interest are being considered.	Fish and Game GM attended hui.

#### 3.2 Board Objective:

The Board will provide representation to the joint management committee Te Tapatoru ā Toi as specified in the Ngāti Awa Settlement Act 2005.

##### Planned Board Activities, Success Measures and Key Milestones

	Action	Progress Commentary
A	Confirm appointment of Board representative to the Te Tapatoru ā Toi joint management committee	Dayle Hunia appointed as Board Representative
B	Board representative will attend meetings of the JMC and provide regular updates back to the Board	Regular updates shared with the board during scheduled board meetings
C	Meet with the JMC where matters of mutual interest are being considered e.g.CMS	Didn't meet this year
D	Receive copies of meeting minutes and other reports	Didn't meet this year

---

<sup>1</sup> This section should include Board functions relating to statutory functions under section 6M of the Conservation Act

### 3.3 Board Objective:

The Board will build strong working relationships with other Statutory Boards within the Bay of Plenty area.

#### Planned Board Activities, Success Measures and Key Milestones

	Action	Progress Commentary
A	Develop a positive working relationship with the Te Urewera Board	Good and respectful relationship
B	Invite the Lake Rotoiti Scenic Reserve Board to attend Board meetings	Engagement with this roopu
C	Invite the Lake Okataina Scenic Reserve Board to attend Board meetings	Engagement with this roopu, invitation was extended to the Field Trip and Hui

## 4 Advocacy

### 4.1 Board Objective

The Board will pursue all reasonable opportunities to advocate at public forums and in any statutory planning processes.

#### Planned Board Activities, Success Measures and Key Milestones

	Action	Progress Commentary
A	Establish sub-committee to consider applications and advocacy opportunities and provide advise to the full Board	
B	Provide input and submissions where conservation values are involved	Julian Lee was Board Representative on review panel for Okere Falls submission and at the Public Hearing.
C	Advocate for increased awareness of the threats posed by invasive pests and threatened species and habitats within the region	Active in some areas of lake, freshwater weeds, catfish and biodiversity threats.

## Part B: General Expectations

### 5 Working with the Department

#### 5.1 Board Objective:

Board members will maintain good working relationships and open dialogue with Directors, Managers and Board Support Officers in order to engage strategically in conservation for the region]

#### Planned Board Activities, Success Measures and Key Milestones

	Action	Progress Commentary
A	Include senior Departmental managers and other staff as required in Board meetings to provide strategic advice	Great, sound relationship with Statutory manager especially with the many competing demands
B	Attend Departmental events when invited and support initiatives to build strong community connections	Attended Mataatua awards
C	Provide a representative for the DOC Community Fund assessment panel	Board representation on this panel has been invaluable

### 6 Working with adjoining Boards and the NZCA

#### 6.1 Board Objective:

The Board members will liaise with neighbouring conservation boards in order to progress cross boundary CMS issues and other matters of mutual interest.

#### Planned Board Activities, Success Measures and Key Milestones

	Action	Progress Commentary
A	Appoint Board members as liaison to adjoining Boards – Waikato, Wellington, East Coast, Hawkes Bay, Bay of Plenty and Taranaki/Whanganui.	Liasing members for the board nominated and confirmed. Meetings attended and the relationships enhanced.
B	Invite members of adjoining Boards to attend meetings and circulate agendas and minutes	All opportunities have been afforded
C	Look for opportunities to collaborate around matters of mutual interest	Collaboration around Tongariro and Raukūmara's



## 7 Understanding the Board's contribution to giving effect to the principles of the Treaty of Waitangi

### 7.1 Board Objective:

The Board will understand and support the Board's and Department's obligations under Treaty settlements as well as principles under section 4 of the Conservation Act.

#### Planned Board Activities, Success Measures and Key Milestones

	Action	Progress Commentary
A	Meet with Treaty Partner at least once a year	Met with Whakatohea, Ngāti Awa, Ngāti Whare
B	Arrange to stay on a marae for one meeting a year	
C	Support members in developing cultural capability through wananga and other opportunities	

## 8 Engaging with the community, including raising the profile of the Board

### 8.1 Board Objective

Board members will liaise regularly with other conservation entities, such as district and regional councils, NGOs and community groups, in order to enhance the profile of the Board and pursue good working relationships on issues of mutual interest and concern]

#### Planned Board Activities, Success Measures and Key Milestones

	Action	Progress Commentary
A	Identify appropriate agencies for Board members to develop strategic relationships with	
B	Appoint Board members to these roles and receive regular updates on this work	Building relationships with Kaimai Mamaku forum and Te Arawa Lakes Trust