



-  Proposed marine reserve
-  Public conservation land

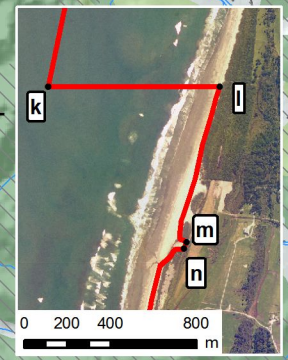
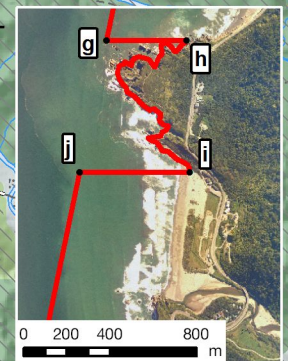
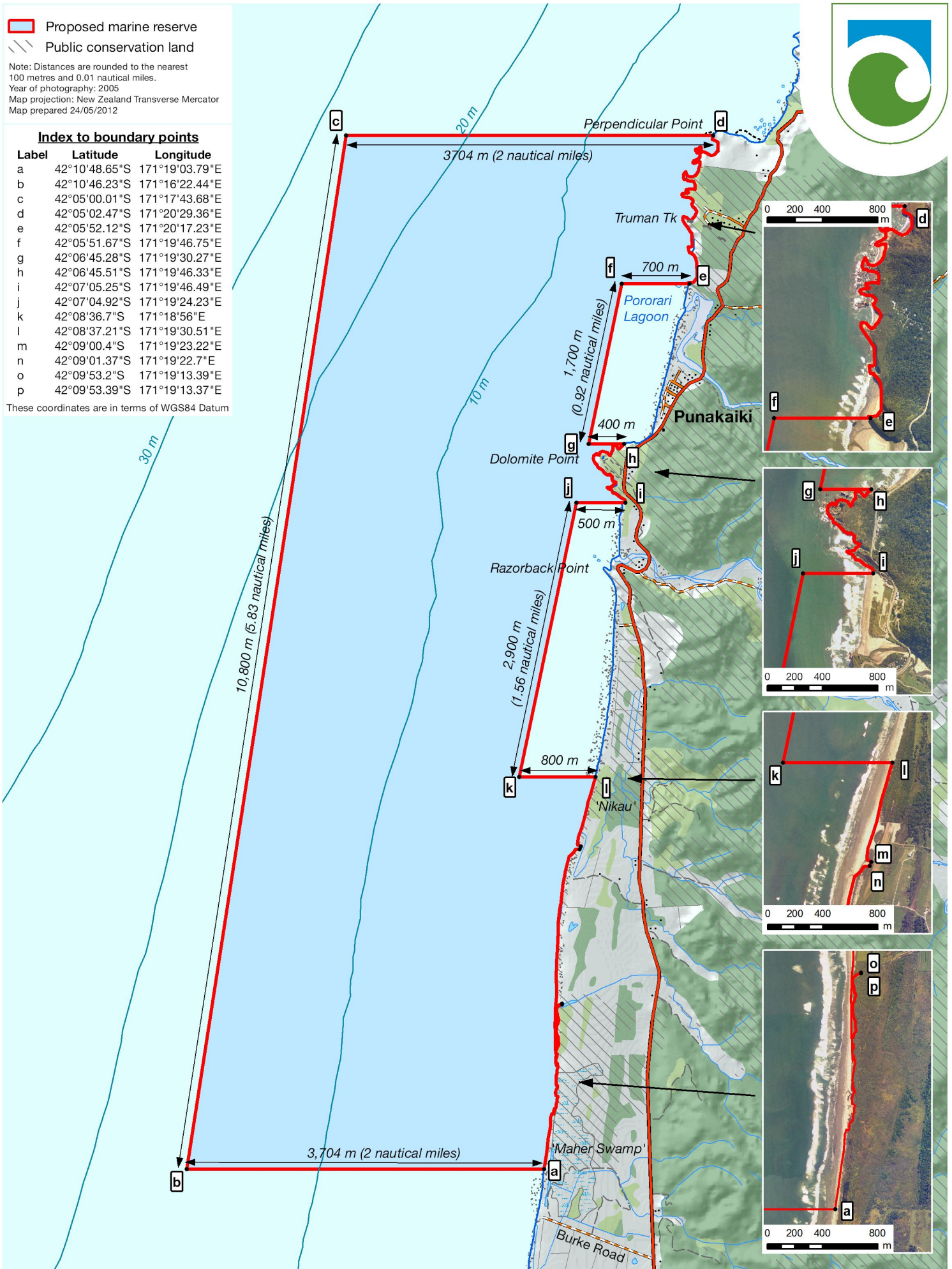
Note: Distances are rounded to the nearest 100 metres and 0.01 nautical miles.  
 Year of photography: 2005  
 Map projection: New Zealand Transverse Mercator  
 Map prepared 24/05/2012



**Index to boundary points**

Label	Latitude	Longitude
a	42°10'48.65"S	171°19'03.79"E
b	42°10'46.23"S	171°16'22.44"E
c	42°05'00.01"S	171°17'43.68"E
d	42°05'02.47"S	171°20'29.36"E
e	42°05'52.12"S	171°20'17.23"E
f	42°05'51.67"S	171°19'46.75"E
g	42°06'45.28"S	171°19'30.27"E
h	42°06'45.51"S	171°19'46.33"E
i	42°07'05.25"S	171°19'46.49"E
j	42°07'04.92"S	171°19'24.23"E
k	42°08'36.7"S	171°18'56"E
l	42°08'37.21"S	171°19'30.51"E
m	42°09'00.4"S	171°19'23.22"E
n	42°09'01.37"S	171°19'22.7"E
o	42°09'53.2"S	171°19'13.39"E
p	42°09'53.39"S	171°19'13.37"E

These coordinates are in terms of WGS84 Datum



**Proposed Marine Reserve - Punakaiki**

Department of Conservation  
 Te Papa Atawhai



Scale: 1:50,000 @ A4