



## Te Pākeka/Maud Island & Pelorus Sound

Join Pelorus Tours and DOC rangers on a memorable trip through the beautiful Pelorus Sound to Te Pākeka/Maud Island. This is a unique opportunity to visit a Scientific Reserve (usually closed to the public). The full-day experience includes a scenic boat ride with stops to encounter marine wildlife, the opportunity to see some of Maud Island's rare species (such as skinks, geckos, wētā and Maud Island frogs) and a guided walk to the island's WWII gun emplacement.

**Dates:** choose one of four options - January 13<sup>th</sup>, 14<sup>th</sup>, 27<sup>th</sup> and 28<sup>th</sup>.

**Price:** \$200 per adult, \$100 per child (13 years and under).

book online at [www.pelorustours.co.nz](http://www.pelorustours.co.nz)

Location: Pelorus Sound & Maud Island

Contact: Pelorus Tours

Email: [gary@pelorustours.co.nz](mailto:gary@pelorustours.co.nz)

Time: 8:15 - 18:30

Date: 13 Jan 24 - 28 Jan 24

## Marlborough

*Welcome to the Marlborough Summer Explorer Programme!*

*Let's have some fun exploring our natural spaces this summer! slap on your sunscreen, grab a hat and let's get outdoors. Marlborough is blessed with a rich natural heritage, ranging from the mountains to the ocean. Come and join us as we explore these special places and seek out the creatures that live there.*

*Many thanks to the community groups and organisations that host events and continue make this summer programme happen.*

*A Merry Christmas and safe and Happy New Year to everybody*

*For events updates see our facebook page:*

[www.facebook.com/marlboroughconservationevents](https://www.facebook.com/marlboroughconservationevents)

DOC Renwick

22 Gee Street

[mvanderlinde@doc.govt.nz](mailto:mvanderlinde@doc.govt.nz)

Phone: +64 27 282 5773

## Marfells Beach Bird Safari



Patrick Crowe, our Senior Biodiversity Ranger will be hosting a "Beach Bird Safari" along the Marfells Beach coastline to Cape Campbell Lighthouse. The tour will highlight the incredible birdlife of the region and you will be learning skills to see and identify birds and understand their stories and lives. Be prepared for a full day by bringing water and lunch, sun protection, jacket and comfortable shoes. This is a **free event**.

Location: Marfells Beach

Date: 5 January

Time: 10am - end of afternoon

Contact: Caroline Cornelius

Email: [ccornelius@doc.govt.nz](mailto:ccornelius@doc.govt.nz)

## Pelorus Bridge Scavenger Hunt



Join DOC on the Pelorus Bridge Scavenger Hunt! You will be given instructions to guide yourself along the tracks to discover nature's treasures and solve the scavenger hunt puzzle. This is a **free event** that is fun for kids\* and kids at heart. Meet DOC staff at Pelorus Bridge Café and don't forget sun protection, warm clothes and solid shoes. \* Kids younger than 10 years must be accompanied by an adult.

Location: Pelorus Bridge Scenic Reserve

Date: 11 January

Time: 1:00 - 3:00 pm

Contact: Miranda van der Linde

Email: [mvanderlinde@doc.govt.nz](mailto:mvanderlinde@doc.govt.nz)

## Onamalutu Forest Tour



Come and enjoy some time in the forest and learn about the flora and fauna of Ōhinemahuta (Onamalutu) with Rowan, our Biodiversity Ranger. Onamalutu is located just 30 minutes drive from Blenheim. This **free event** is a fun family day out to enjoy the bird song and explore the remnant podocarp forest with its impressive towering kahikatea and matai trees. Bring water and lunch, sun protection and comfortable shoes.

Location: Onamalutu

Date: 12 January

Time: 10am - 12pm

Contact: Caroline Cornelius

Email: [ccornelius@doc.govt.nz](mailto:ccornelius@doc.govt.nz)



## December, 2023

### Kaipūpū return boat transport



Location: Kaipūpū Sanctuary

**10 Dec 23 - 13 Apr 24**

Contact: Beachcomber Cruises

[www.beachcombercruises.co.nz](http://www.beachcombercruises.co.nz)

Time: 9:00-11:00 am



Kaipūpū Sanctuary is a community conservation project focused on rewilding a 40-hectare peninsula through a pest-proof fence, pest species control, and the re-introduction of native species. The Sanctuary is a refuge for a variety of insects, birds and native plants thanks to the hard work of our volunteers. Beachcomber Cruises is offering discounted boat transport to the sanctuary on select dates (Dec 10<sup>th</sup>, Jan 4<sup>th</sup>, Feb 11<sup>th</sup> and Mar 9<sup>th</sup>).

**Book:** [www.beachcombercruises.co.nz](http://www.beachcombercruises.co.nz)

**Cost:** \$17.00/adult, \$12.00/child (2-14 years), under 2 years free.

**\*\* \$1 of every ticket sold will go directly to the Kaipūpū Point Trust \*\***

## January, 2024

### Wildlife Conservation Tour for the family or groups



Location: 48 Elliot Street, Grovetown, Blenheim

**Dec - Ongoing**

[www.koruwildlife.nz](http://www.koruwildlife.nz)

Time: Mon-Fri as per website availability



Are you looking for a great family/group activity? Our wildlife centre in Grovetown (near Blenheim) offers an opportunity to get up close with some of NZ's species that we breed for release back into the wild. Learn fascinating facts about our native animals and efforts to restore their natural habitats while enjoying a friendly and relaxed setting. We currently have geckos, giant wētā and kākārīki.

**Bookings are essential:** [www.koruwildlife.nz](http://www.koruwildlife.nz)

**Cost:** \$15/adult, \$5/child. Tours take about 1.5 hrs and are ideal for ages 6+ (or explore at your own pace if you have younger children).

*Koru Native Wildlife Centre is run by Tui Nature Reserve Wildlife Trust (a registered charity).*

### Kaipūpū Botanical Tour



Location: Kaipūpū Sanctuary

**Dec - Ongoing**

Email: [admin@kaipupoint.nz](mailto:admin@kaipupoint.nz)

[www.kaipupusanctuary.nz](http://www.kaipupusanctuary.nz)

Time: Anytime



Pick up a "Take a walk on the wild side" booklet (\$2) from Picton Environment Centre (14 Auckland St, Picton) and go on a self-guided botanical tour of Kaipūpū Sanctuary. Follow the 2.7 km loop track and see if you can find all 36 marked species in the booklet, as well as additional botanical treasures that might take some more searching.

Entry into the sanctuary is free, but you will need to arrange water transport to get there. See "Kaipūpū return boat transport in this newsletter for special discounted travel dates offered by Beachcomber Cruises.





## Marfells Beach Bird Safari



Location: Marfells Beach

**5 Jan 24**

Contact: Caroline Cornelius  
Email: [ccornelius@doc.govt.nz](mailto:ccornelius@doc.govt.nz)  
Time: 10am - end of afternoon



Patrick Crowe, our Senior Biodiversity Ranger will be hosting an "Beach Bird Safari" along the Marfells Beach coastline to Cape Campbell Lighthouse. The tour will highlight the incredible birdlife of the region and you will be learning skills to see more birds, identify them with confidence and understand their stories and lives. This is a great chance for birders from beginners to enthusiasts and experts to be part of a fun and informative day out. Meet at Marfells Campsite for a 10am departure. Be prepared for a full day by bringing water and lunch, a waterproof/windproof jacket, sun protection and comfortable shoes. This is a **free event**.

## Kārearea Falcon Center Tours



Location: Blenheim

**9 Jan 24 - 31 Mar 24**

Email: [office@kareareafalcon.org](mailto:office@kareareafalcon.org)  
[www.mfct.org.nz](http://www.mfct.org.nz)  
Time: 10:10 - 11:30 am, Tue & Thu



Bookings are open for our Center Tours starting from 8th January 2024. Get a behind the scenes look of our falcon rehabilitation and breeding centre. Tours will be held every Tuesday and Thursday, 10:30 am to 11:30 am. 'Swoop' in quick, spots are limited. To book your spot please email [office@kareareafalcon.org](mailto:office@kareareafalcon.org). Adults: \$30, kids (5-16 years): \$10 Kids under 5 years free. Gift vouchers are available.

## Pelorus Bridge Scavenger Hunt



Location: Pelorus Bridge Scenic Reserve

**11 Jan 24**

Contact: Miranda van der Linde  
Email: [mvanderlinde@doc.govt.nz](mailto:mvanderlinde@doc.govt.nz)  
Time: 1:00 - 3:00 pm



Join DOC on the Pelorus Bridge Scavenger Hunt! You will be given instructions to guide yourself along the tracks to discover nature's treasures and solve the scavenger hunt puzzle. This is a **free event** that is fun for kids\* and kids at heart. Meet DOC staff at Pelorus Bridge Café and don't forget sun protection, warm clothes and solid shoes.

\* Kids younger than 10 years must be accompanied by an adult.

## Onamalutu Forest Tour



Location: Onamalutu

**12 Jan 24**

Contact: Caroline Cornelius  
Email: [ccornelius@doc.govt.nz](mailto:ccornelius@doc.govt.nz)  
Time: 10am - 12pm



Come and enjoy some time in the forest and learn about the flora and fauna of Ōhinemahuta (Onamalutu) with Rowan, our Biodiversity Ranger. Onamalutu is located in Mt Richmond Forest Park, just 30 minutes drive from Blenheim. This is a fun family day out to enjoy the bird song and explore the remnant podocarp forest with its impressive towering kahikatea and matai trees. Bring water and lunch, sun protection and comfortable shoes. This is a **free event**.



## Te Pākeka/Maud Island & Pelorus Sound Tour



Location: Pelorus Sound & Maud Island

**13 Jan 24 - 28 Jan 24**

Contact: Pelorus Tours

Email: [gary@pelorustours.co.nz](mailto:gary@pelorustours.co.nz)

[www.pelorustours.co.nz](http://www.pelorustours.co.nz)

Time: 8:15 - 18:30



Join Pelorus Tours and DOC rangers on a memorable trip through the beautiful Pelorus Sound to Te Pākeka/Maud Island. This is a unique opportunity to visit a Scientific Reserve (usually closed to the public). The full-day experience includes a scenic boat ride with stops to encounter marine wildlife, the opportunity to see some of Maud Island's rare species (such as skinks, geckos, wētā and Maud Island frogs) and a guided walk to the island's WWII gun emplacement.

**Dates:** choose one of four options - January 13<sup>th</sup>, 14<sup>th</sup>, 27<sup>th</sup> and 28<sup>th</sup>.

**Price:** \$200/adult, \$100/child (13 years and under). book online at [www.pelorustours.co.nz](http://www.pelorustours.co.nz)

## Whites Bay Ranger Day



Location: Whites Bay

**19 Jan 24**

Contact: Caroline Cornelius

Email: [ccornelius@doc.govt.nz](mailto:ccornelius@doc.govt.nz)

Time: 10am - 2pm



Come along for a local adventure with the Rangers of South Marlborough. Our Freshwater Ranger Anna Henderson will be exploring the streams that lead onto the beach - a great chance to discuss curiosities and identify flora and fauna. Join our Community Ranger for a scavenger hunt around Whites Bay, take time to walk the Black Jack Track with our of our Biodiversity Rangers - spot a trapping programme in action and ask questions about our community pest programme. A great informative day out and a chance to enjoy the amazing destination that is Whites Bay! Bring water and lunch, sun protection and comfortable shoes. This is a **free event**.

## February, 2024

### World Wetland Day Walk at Grovetown Lagoon



Location: Steam Wharf Rd, Grovetown Lagoon - meet at the carpark by the bridge

**3 Feb 24**

Contact: Justine Johnson

Email: [johnsonmarlborough@gmail.com](mailto:johnsonmarlborough@gmail.com)

[www.grovetown.co.nz](http://www.grovetown.co.nz)

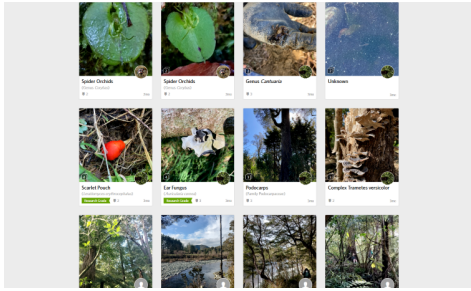
Time: 9 - 11 am



Celebrate World Wetland Day at Grovetown Lagoon on a guided walk followed by a **free** BBQ. Grovetown Lagoon is a beautiful oxbow lake 5 km north of Blenheim that is managed by the community (Te Whanau Hou Grovetown Lagoon), with over 20 years of restoration work. The loop track wanders through both newly planted areas and more established native bush, with views of the lagoon and a variety of forest and wetland birds. The guides will discuss the lagoon's development, predator trapping programme and ongoing weed control. The flat track is just over 3 km long over mostly formed gravel. The event will finish back at the carpark for a free sausage sizzle. All welcome!



## Pelorus Legacy Bioblitz



Location: Pelorus Bridge Scenic Reserve

### Dec - Ongoing

Contact: Marlborough Girl's College

[See text](#)

Time: Ongoing



Are you visiting Pelorus Bridge Scenic Reserve this summer? The Environmental Sustainability class of Marlborough Girls College has started a bioblitz, recording species around the Te Hoiere/Pelorus long-tailed bat population. The class would love it if visitors to Pelorus Bridge could take the time to note any unusual or exciting flora and fauna seen. See [www.inaturalist.org/projects/pelorus-legacy-bioblitz-esu-2023?tab=observations](http://www.inaturalist.org/projects/pelorus-legacy-bioblitz-esu-2023?tab=observations) for more information.

## March, 2024

### Massive Marlborough Clean-up



Location: Marlborough

### 2 Mar 24 - 10 Mar 24

Contact: Miranda van der Linde

Email: [mvanderlinde@doc.govt.nz](mailto:mvanderlinde@doc.govt.nz)



The Massive Marlborough Clean-up is back for Seaweed 2024 (2-10 March)!

Join one or more clean-up events which will be held on beaches and waterways through Marlborough during Seaweed 2024. Communities are also invited to host their own - contact Miranda if you want to host a clean-up (or other Seaweed event). Details of Seaweed events will be posted on [www.facebook.com/marlboroughconservationevents](http://www.facebook.com/marlboroughconservationevents).

### Kaituna Ridges Ramble



Location: 74 Readers Rd, Havelock

### 23 Mar 24

[peloruscommunitypreschool.co.nz/krr](http://peloruscommunitypreschool.co.nz/krr)

Time: 8-9 am start



This is a fundraising event for Pelorus Community Preschool. It's a personal challenge, not a race. The Ramble is a challenging 12 km loop course through the Kaituna Ridges Farm. You can choose to walk, run or cycle. The 4WD track has sections of an old gold miners trail and traverses the scenic landscape of farmland and sections of native bush. Bring your camera to capture the stunning views of the Pelorus Sound, and don't forget sturdy footwear, water and sun protection. Pre-registration: \$30/adult, \$10/child (12 and under). On-the-day entry cost: \$35/adult, \$10/child.