

Our pathway towards a Predator Free Te Tai Tokerau 2021-2026

*Tō Mātou Huarahi kia
Predator Free Te Tai Tokerau*



Photo: Mel Riddle



Contents

Rārangi Take

Introduction <i>Whakatakinga</i>	04
Whakatauki	06
Background <i>Horopaki</i>	08
Current Regional Landscape Scale Predator Free projects <i>Ngā Mahi Kua Haere Kei Te Tua Whenua</i>	12
Tangata Whenua Engagement <i>Etahi Kōrero a Ngā Tangata Whenua</i>	14
Principles <i>Whaonga Pono</i>	18
Acknowledgements <i>Ngā Mihi</i>	19
Proposed pathway for the Region <i>Whakatakotoranga Mo Te Rohe</i>	21
Key Themes <i>Āpiti Kaupapa</i>	22
1. Growing the PF2050 movement <i>Whakatupuranga mo PF2050</i>	22
2. Regional communications and engagement <i>Ētahi Korero a Rohe me te Mahi Tahī</i>	26
3. Knowledge sharing <i>Tohatoha Aramatanga</i>	27
4. Working with Tangata Whenua <i>Mahitahi ki Ngā Tangata Whenua</i>	29
5. Resourcing <i>Rauemi</i>	30
Appendices <i>Tāpiritanga</i>	32

Introduction

Whakatakinga

For many decades, individuals, groups and Tangata Whenua across Te Tai Tokerau have committed countless hours to protecting our native tāonga species and enhancing biodiversity through predator control activities. This passion and determination highlights the commitment of the people of Te Tai Tokerau to protect, and work to restore, our natural environment.

This five-year pathway builds on that dedication, with a renewed focus on regional collaboration and collective impact. It is the result of 16 months of kōrero and engagement with the community, Tangata Whenua, industry, agencies and taitamariki across Northland. It is a shared pathway - a beginning - formulated with the input of Tangata Whenua who are active in their duties for Te Taiao, and the support of passionate and engaged individuals and groups who are committed to protecting and preserving our natural environment through predator control and other biodiversity activities. It captures the feedback and contributions from willing voices across the region but does not assume to represent all of Te Tai Tokerau.

This pathway is reflective of the social, economic, cultural and political environment at the time of writing, and also acknowledges that for such a long-term vision, these influences will evolve in the years and decades to come. Its release comes five years after the New Zealand Government announced the PF2050 vision and just over a year after the launch (February 2020) of the national strategy and action plan.

This pathway reflects on what this national vision means to those that contributed and the role we can play in the national strategy.

Part of the current landscape is the Jobs for Nature- Mahi mō te Taiao fund, which has been a huge boost for Te Tai Tokerau. Following Covid-19, the Government has invested many millions into nature-based projects to improve our freshwater and ngāhere, restore places of significance and protect tāonga species. Much of this mahi is aligned with predator control and also seeks to improve local employment opportunities, particularly for whānau. Northland has a unique opportunity to sustain - and build on - the gains made through Jobs for Nature-Mahi mō te Taiao, with the ongoing momentum created through this pathway.

We can anticipate more tools and methods to add to our options in the coming five years from the large landscape mainland PF2050 eradication trials underway across the country and investment into technological development.

With the collective commitments of our community groups, Tangata Whenua, industry, conservation organisations and groups, and central and local government agencies, Northland is in a strong position to take the next step forward towards Predator Free Te Tai Tokerau. We have the opportunity to be bold, novel and do things differently.



DOC: North Island kokako, R. Colbourne, Puketi Forest, 1980

Whakatauki

*E kore taea te ika kia kōkōu,
ki te kore tōna hiorē*

The fish cannot swim until the tail moves

This whakatauki of the north acknowledges Te Tai Tokerau as the tail of Te Ika a Maui (the fish of Maui - the North Island of Aotearoa). Te Tai Tokerau has long been a catalyst for change. It is the location of the first arrivals of Pacific navigators, Kupe followed by Nukutawhiti, and it is where Te Tiriti o Waitangi was initiated. As the many communities of Te Tai Tokerau consider deliberate actions towards a Predator Free future, this whakatauki acknowledges the tail of the fish starting to move in unison and its collective impact on the whole of Te Ika a Maui.





Background

Horopaki

Five years after the New Zealand Government announced the vision “to become predator free by 2050”, the national Predator Free 2050 Strategy and five-year Action Plan were launched in March 2020. The strategy acknowledges that to achieve predator free by 2050, a new approach is needed. The Strategy outlined three key phases:

Mobilise

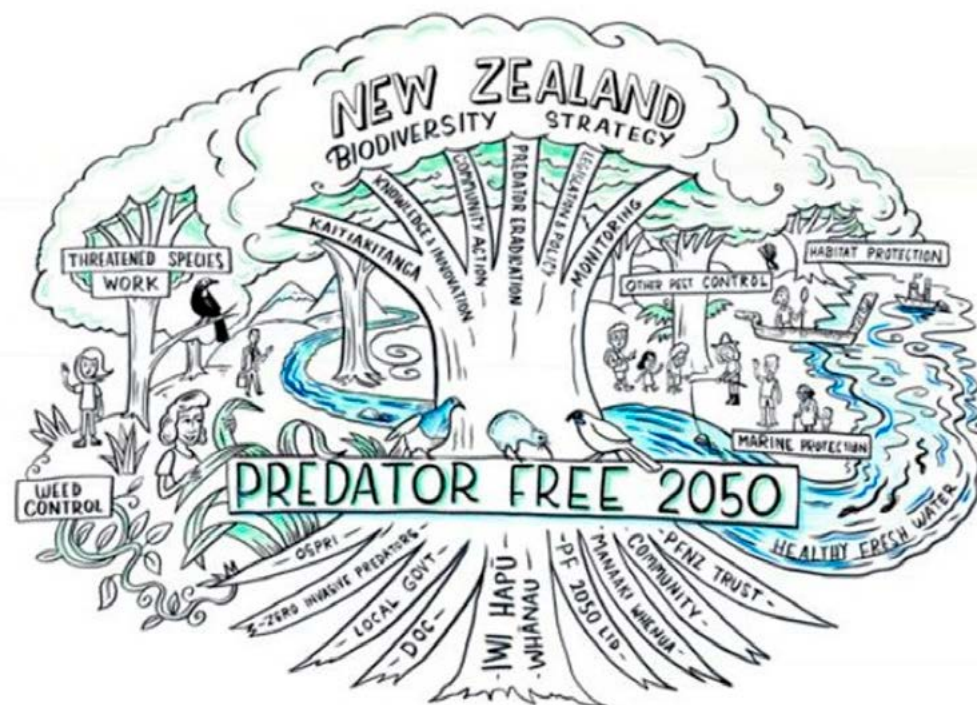
Taking the steps needed to build predator free communities and establish regional and national collaborations.

Innovate

Developing the new and transformational tools and techniques (and the public acceptance of them) that will be required to eradicate predators.

Accelerate

Applying Predator Free 2050 tools and techniques across the landscape of New Zealand as fast as possible, as they are developed.



- ▲ *The New Zealand Biodiversity Strategy - Te Mana o te Taiao leads New Zealand's work on biodiversity. All other programmes, including work to make New Zealand Predator Free by 2050, sit beneath this canopy.*

The Predator Free 2050 five-year Action Plan acknowledges that PF2050 will only be achieved if everyone shares responsibility for it and that regional and national collaborations are critical to lead the direction of the strategy. It also reinforces the importance of collective action and collaboration.

The Department of Conservation (DOC) has a specific role to develop and deliver the PF2050 strategy. Northland Regional Council (NRC) has identified and invested in PF2050 as a goal for the region, with the support of ratepayers via the current Long-Term Plan. However, both agencies acknowledge that for this movement to grow, the leadership and commitment must come from Tangata Whenua, sector leads, agencies, and communities across the region.

In 2020, DOC – in collaboration with NRC – funded research into views within Te Tai Tokerau on the PF2050 goal, to hear how it aligned with what was important to Northlanders, and whether there was interest in developing a plan for Te Tai Tokerau. Community conservation groups, tourism and farming organisations, forestry, environmental NGO's, plus 116 different community organisations and groups took part in either one-on-one interviews with an independent contractor, or SurveyMonkey. Concurrently, emails were sent to iwi and hapū contacts on DOC databases inviting them to take part in interviews with an independent contractor. This was followed up by the contractor to arrange interviews.

Though in no way representative of all Te Tai Tokerau, the feedback from those interviewed across all sectors and Tangata Whenua was overwhelmingly positive. There was also enough interest in progressing towards the goal to support moving forward with developing a plan.

In April 2021, planning sessions were held with the community conservation groups, key organisations, regional agencies and industry representatives who had registered interest in being part of developing a plan during the research phase. Sessions were held in Dargaville, Kaitaia, Kerikeri and Whangārei, to outline activities aligned with PF2050 being planned in Northland over the next five years, and to ask attendees what else could be achieved with more resources, more regional collaboration and new thinking. Engagement focused on building support and strengthening existing projects to 'hold the space' until new national tools and technologies become available.

During the first half of 2021, a team of kaimahi with existing ties to iwi, hapū and whānau were also tasked to collate an inclusive sample of Tangata Whenua Priorities for PF2050 in Te Tai Tokerau from among their natural networks - see 'Tangata Whenua Engagement' on page 14. Discussions focussed on 'Kaupapa Māori' approaches which reinstate whānau, hapū and iwi relationships with Te Taiao based on He Whakaputanga me Te Tiriti o Waitangi.

This pathway plan is a starting point, working with a group of willing and committed people and organisations to expand the movement. The plan brings current regional large landscape scale PF2050 projects, along with the large number of activities happening across the region, into a cohesive and collective picture. It also captures actions that those who were involved in developing the plan are prepared to commit to within existing resources, as well as describing what is needed to ramp up efforts.

We have called this plan a pathway as we see it helping guide us as we move forward. There are gaps that will need to be addressed as we progress, more people to include into the kōrero and design, but it gives us a fantastic base to move forward from.

Next Steps

The intent of this pathway is threefold:

- 1 Provide an overview of key activities underway in Te Tai Tokerau related to PF2050.** As already acknowledged, this document does not presume to represent all work or groups/individuals involved. It is a summary of activities from those who took part in developing the pathway. It is, however, a powerful description of an already impressive effort by many to progress towards a predator free Te Tai Tokerau.
- 2 To inform what we need to focus on over the next five years.** In the proceeding tables, there are five focus areas, each containing a list of actions as well as a snapshot of the priorities of Tangata Whenua. This is where our efforts will go. The successful achievement of these focus areas will happen through the collective effort of all those that contributed to the plan.
- 3 Describe a networked approach to leadership.** There will be regional roles that agencies and others will need to fill, but the intent is to empower place-based leadership while growing and responding to strengthening Te Tiriti o Waitangi relationships.

The immediate next steps that the Department of Conservation will commit to are:

- 1** Identify funding requirements to help inform a national investment strategy for PF2050.
- 2** Resource regional roles that can grow the network and support progress on the focus areas.
- 3** Engage with organisations and Tangata Whenua groupings who play key roles in enabling the progress of the focus areas.



Current Regional Large Landscape Predator Free Projects

Ngā Mahi Kua Haere Kei Te Tua Whenua

10-year predator free strategic plan for Te Uri o Hau rohe

Environs Te Uri o Hau is working collaboratively with other hapū and iwi, crown agencies, councils, landowners and communities of the Kaipara catchment to support local pest control initiatives. They are currently in the development stage of a 10-year predator free strategic plan for Te Uri o Hau rohe. This will complement the planning phase of their landscape scale project which will inform pest and predator control implementation across the Kaipara catchment.

Predator Free Bay of Islands

Predator Free Bay of Islands is a landscape scale community-led predator control and eradication project that will play a key role in a regional vision for a predator free Te Tai Tokerau.

NRC has recently secured \$4 million in funding from Predator Free 2050 Ltd in partnership with Bay of Islands iwi, hapū, landowners, community landcare groups, organisations and agencies to support this project.

The project will work alongside existing pest control programmes across the three main peninsulas (13,728 ha) within the Bay of Islands: Purerua Peninsula (about 7600ha), Russell Peninsula (3000ha) and Cape Brett/Rākaumangamanga (3000ha).

The five-year project has an estimated budget of \$15 million (including in-kind community contributions) and will also establish sustained predator control, with a pathway to eradication, in the 80,000-plus hectares that make up the wider Bay of Islands.

The project will work with iwi and hapū, landowners, community groups and agencies to engage with those who are keen to be involved. This will include developing a collaborative project plan and a feasibility investigation to guide where eradication objectives can be achieved, followed by the development of technical eradication plans and then implementation.

The project ultimately aims to eradicate predators from the three main peninsulas in the Bay of Islands and significantly reduce the impact of possums, mustelids and rats throughout the wider landscape.

The \$4 million of funding, coupled with significant in-kind contributions from community conservation groups, iwi and hapū, NRC, Far North District Council, Kiwi Coast and DOC, has made this project possible.

Predator Free Whangārei

Predator Free Whangārei is a project for everyone in Whangārei! The project is coordinated by NRC, with an intent to work in partnership with DOC, Kiwi Coast, Tangata Whenua, Whangārei District Council, QEII National Trust, Backyard Kiwi, Whangārei Heads Landcare Forum, Bream Head Conservation Trust, Tiakina Whangārei, Pukenui Western Hills Forest Trust, Tutukaka Landcare Coalition, Friends of Matakohe Limestone Island and many more community groups.

Objectives of Predator Free Whangārei are:

- Completely remove possums from the Whangārei Heads Peninsula (9000 ha)
- Intensively control mustelids between Whangārei and Te Whara / Bream Head
- Intensively control rats in high priority sites
- Intensively control possums between Whangārei and Pārua Bay to prevent their dispersal into Whangārei Heads
- Develop an urban predator control programme in Whangārei City

Over the next five years, the project will be coordinated on behalf of the community by NRC. Project plans have been drafted to support community discussion about how the project will work towards eradicating possums from Whangārei Heads.

Ongoing discussions and consultation will continue throughout the project with partners, Tangata Whenua, landowners and the community to ensure everyone is comfortable with an agreed approach.

Tangata Whenua Engagement

Etahi Kōrero a Ngā Tangata Whenua

Since the 2016 announcement of Predator Free 2050, Tangata Whenua of Te Tai Tokerau have not been visible in its development or design. Nonetheless, many discussions have occurred among the iwi, hapū and whānau on their long-held aspirations and priorities for Te Taiao.

Tangata Whenua groupings of Te Tai Tokerau are connected with an inalienable whakapapa to Te Taiao, however, the self-determination in the relationship with Te Taiao has been disrupted by the many alienations of land, culture and language experienced since the signing of Te Tiriti o Waitangi. It is in this context that the diverse, independent and interdependent groupings of Te Tai Tokerau consider the eradication of predators being offered by PF2050.

Self-determined approaches to pest control have been underway within Tangata Whenua groupings of Te Tai Tokerau for generations. The offshore

islands of the north have given some iwi and hapū experience in eradication. In recent years, some Tangata Whenua groups have declared commitment to goals to lead landscape scale eradication projects, and these kaupapa are now growing in Te Hiku, Eastern Bay of Islands and the Kaipara.

In a task to gather a snapshot of those self-determined priorities for Te Taiao, which may align with Predator Free 2050, a small team of hapū members with ongoing commitments to Te Taiao conducted interviews, discussions and hui in the first half of 2021. This continued on from a series of interviews conducted in the second half of 2020 with tribal, marae and Te Taiao leaders asking the question, “Does PF2050 align with your existing priorities for Te Taiao?” The responses from the 24 participants indicated the PF2050 concept could align, and many thoughts were shared on how

This overview has been provided by Nicki Wakefield, Independent Contractor from Matakōhe Urbanism and Design, who has coordinated the Tangata Whenua engagement approach.

this could be accelerated in their respective rohe, as part of an effort across the whole of the north, underpinned by He Whakaputanga me Te Tiriti o Waitangi.

The results of these discussions are collated into priority actions which are offered for the wider PF2050 network to consider and be aware of. Nga Unaunahi o Te Ika: Tangata Whenua Independent and Interdependent Action Framework have been prepared to also share insight into the priority actions being considered at different geographical districts, and within Tangata Whenua groupings with natural alignment to work collectively. However, it is important to note that at the end of the day, each Tangata Whenua group speaks for themselves.

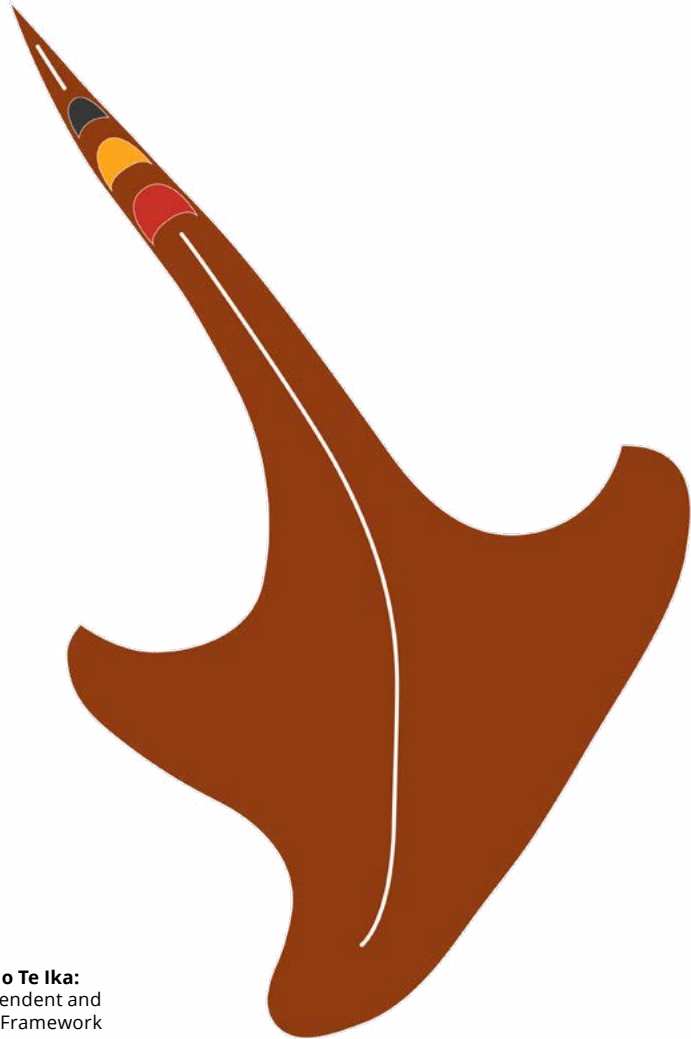
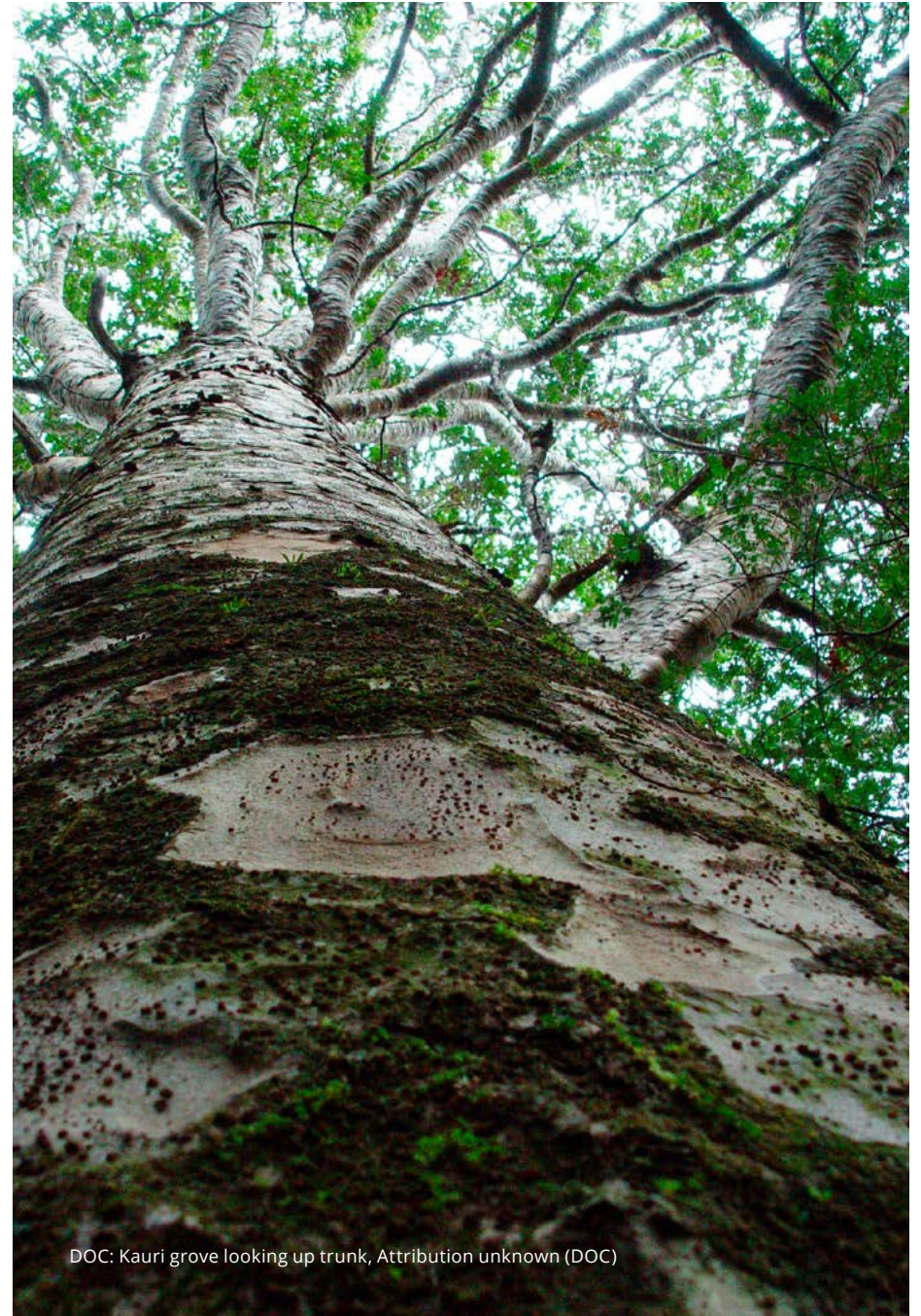
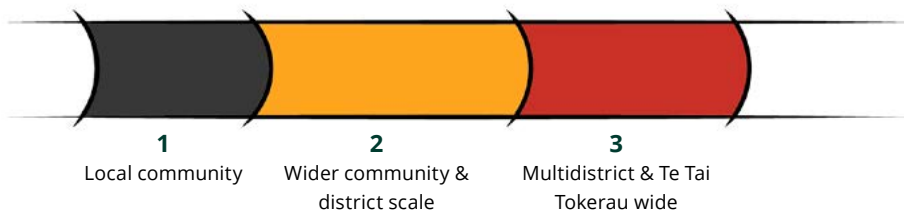


Image: Ngā Unaunahi o Te Ika:
Tangata Whenua Independent and
Interdependent Action Framework



DOC: Kauri grove looking up trunk, Attribution unknown (DOC)

Tangata Whenua Priority Action Themes

Establish Te Tai Tokerau Taiao Network

- Large hui to outline a proposed Taiao Network for coordinating discussions of collective significance, share knowledge and pānui network
- Plan and host an annual Wānanga Taiao for regional information sharing on Pest Control and Mahi Taiao

Workforce Development

- The design and ongoing input to a 'Ranger School' for workforce development in Predator Free operations and aligned industries, informed by Mātauranga Māori

Wānanga Mātauranga

- Dedicated resourcing to continue to grow and revive understandings, practices and transmission of Mātauranga Taiao within Tangata Whenua Groupings, and ensure it is shared with appropriate protections with the wider PF2050 network

Haere Takirua in the spirit of Te Tiriti o Waitangi

- Ensure Tangata Whenua Groupings have independent oversight of, and input into, PF2050 at all scales of action in Te Tai Tokerau, and across New Zealand. This includes research programmes, resource allocation, evaluative review of the Kaupapa and te tino rangatiratanga o to mātou taonga
- Ensure Te Reo Māori is made part of the entire PF2050 network at all scales of action
- Ensure Te Tiriti o Waitangi training is offered to all within the PF2050 network

Sharing our story

- A dedicated campaign whereby respective Tangata Whenua Groupings are able to share their values, drivers, priorities and vision for Te Taiao in their rohe with the wider community as well as in localised curriculum with schools, kura, kohanga and ECE

Regional Taiao Hubs

- Localised hubs offering the training, equipment and community network for all in the community to access the knowhow, education and resources to get started in pest control

This report collects a snapshot of the priority actions among Tangata Whenua groupings of Te Tai Tokerau which potentially align with Predator Free 2050. The content, methodology and images reproduced in this report are a collation of a portion of Tangata Whenua priorities for PF2050.

Tangata Whenua Report Authors:

Nicki Wakefield
Ngairo Tahere
Te Kaurinui Parata
Hollie Russell

Further Content Advisor:

Robyn Tauroa

Te Reo Maori Translations:

Ngairo Tahere
Te Kaurinui Parata

Contributors:

The report writing team acknowledge the below list who contributed their time and energy to this report.

Taitokerau Māori Forestry Ltd hui held 11/5 & 29/6
Ngā Hapū o Whangārei
Trapping Coordinators of: Te Patunga Marae
Karangahapa Marae
Otangaroa Marae
Taemaro Papakāinga
Wainui-Piapia
Te Komanga Marae
Kaitiaki Whangaroa Tangata Whenua Members
Pōkai o Ngāti Manu members
Patuharakeke Te Iwi Trust Board
3B2Te Rawhiti, Ngati Kuta Te Patukeha
24 participants in PF2050 Tangata Whenua interviews during July-September 2020
Attendees at Te Korowai Rahui hui held at Puketi Forest Park 7 May 2021

This report was prepared as part of services carried out by Matakohē Architecture and Urbanism. The report content is not to be considered as the voice of the respective Tangata Whenua groupings of Te Tai Tokerau.



Principles

Whaonga Pono

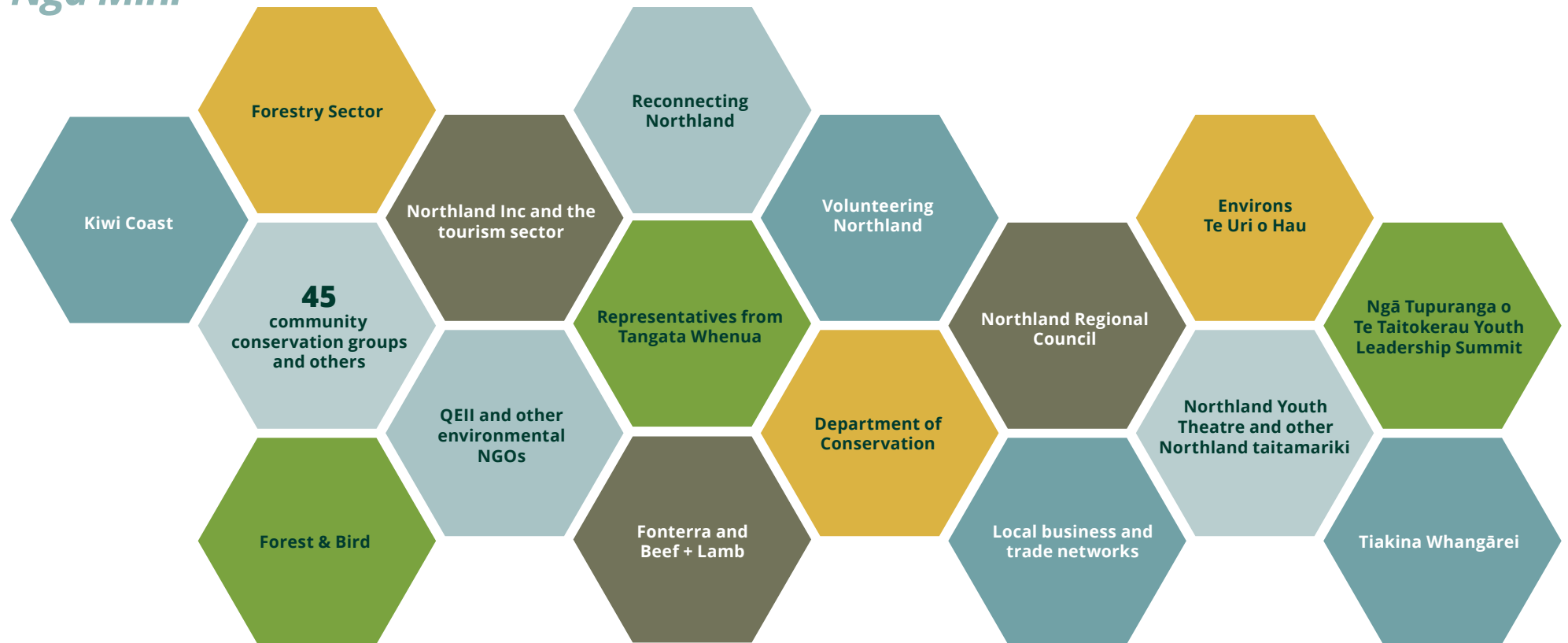
Through the many conversations, kōrero and discussions that have helped shape this pathway, a number of principles have emerged. These provide guidance about how to progress this kaupapa in Te Tai Tokerau.

- 1 Work with the willing and grow the movement - the actions in the plan represent those who wanted to be part of developing a plan^[1] - it is not intended to represent the views of all of Te Tai Tokerau
- 2 Tangata Whenua are enabled to contribute from Te Ao Māori lens
- 3 Recognise and respect the autonomy of individual groups, organisations and individuals to forge their own path in their own way
- 4 Collaboration is through a networking approach where we connect, learn, share, and support each other towards a regional goal
- 5 Regional coordination guides and supports the network to ensure efforts are visible, prioritised, cohesive and contributing towards greater gains for the region, and ensures that lessons learned can be shared
- 6 Agencies work collaboratively with each other to support and empower action on the ground - leadership of the plan is shared across the network

[1] In 2020 invitations to connect on PF2050 were sent to Tangata Whenua, community conservation groups, environmental NGOs, land use sector organisations, a cross-section of community organisations, recreational users and key agencies. As a result of this over 50 different entities indicated their interest in developing a 5-year action plan.

Acknowledgments

Ngā Mihi

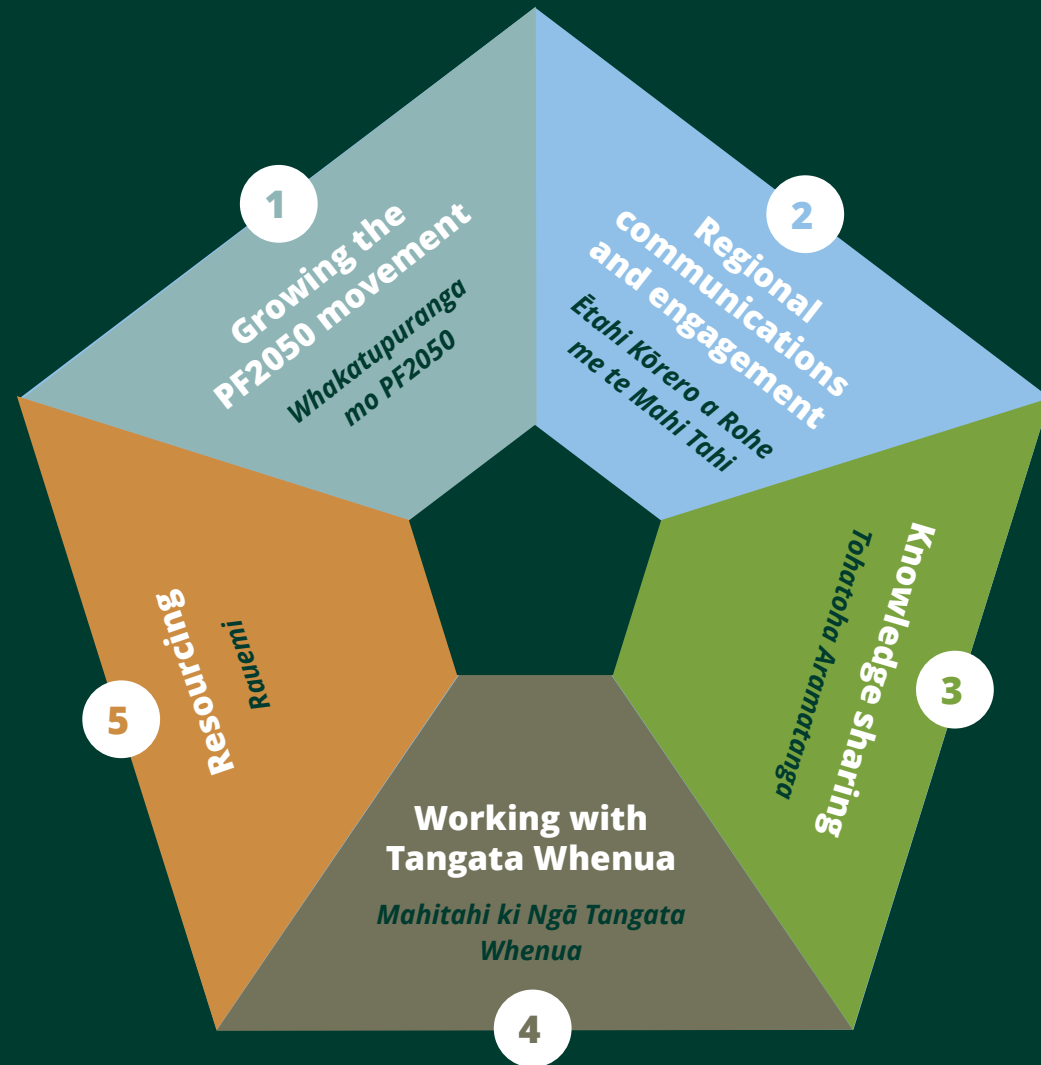




Proposed Pathway for the Region

Whakatakotoranga Mo Te Rohe

The following table reflects the collective activity and proposed pathway in Te Tai Tokerau over the next five years. The table has been divided into five Key Themes with supporting Focus Areas, which will all weave together to support Te Tai Tokerau's journey towards Predator Free 2050.



Focus Area	Current Contributors to Progress Focus Area	Actions	Current Resource	Additional Investment Required
1.1 Regional land use sector	Fonterra Beef + Lamb NZ Northland Forestry Forum NRC DOC Kiwi Coast Reconnecting Northland	<p>a Build PF2050 into Farm Environment Plan templates and sub-catchment farm plans</p> <p>b Build capacity of Land Management Advisors to support farmers to tackle action/get involved</p> <p>c Build momentum amongst farmers through promotion, engagement and source of tools for predator control</p> <p>d Explore option for a percentage of TB slaughter levy to support on-farm PF2050 activities</p> <p>e Support trials and pilots on farms</p> <p>f Involve forest companies in activities and regional coordination</p> <p>g Connect forest companies with Kiwi Coast</p> <p>h Bring in DairyNZ and OSPRI</p> <p>i Beef + Lamb NZ catchment group workshops</p>	<p>Farm Environment Plan templates</p> <p>Land Management Advisors</p> <p>Large network of farmers and reach into other land use sectors</p> <p>Farm Source stores as promotion/info hub</p> <p>TB slaughter levy</p> <p>Linking Fonterra farmers to potential trials and pilots</p> <p>Beef + Lamb NZ networks</p> <p>Rural professional meetings</p> <p>Northland Forestry Forum</p> <p>CPCA – Community Pest Control Areas (NRC)</p> <p>Kiwi Coast networks</p>	<p>Technical advice and support</p> <p>Engage with MPI, DairyNZ and OSPRI</p> <p>Regional coordination</p> <p>Funding for workshops/trials</p> <p>Engagement activities</p>
1.2 Tourism and business	Northland Inc DOC	<p>a Progress PF2050 focus in Northland Destination Management Plan</p> <p>b Partner with iwi on leadership groups</p> <p>c Create a storytelling framework</p> <p>d Involve tourism sector in monitoring</p> <p>e Explore product development options</p> <p>f Work with businesses to adopt a project</p>	<p>Northland Inc</p> <p>DOC's commercial partnerships and visitor advice teams</p>	<p>Qualmark brand</p> <p>TIA sustainability brand</p> <p>Coordination of actions</p>

Focus Area	Current Contributors to Progress Focus Area	Actions	Current Resource	Additional Investment Required
1.3 Scaling up community conservation	Kiwi Coast Community conservation groups Forest and Bird DOC NRC Northland Forestry Forum QEII Fonterra Beef + Lamb NZ Reconnecting Northland	<p>a Connect existing work into corridors</p> <p>b Identify and implement landscape scale initiatives</p> <p>c Expand existing efforts</p> <p>d Increased use of professional trappers</p> <p>e Engage more community members in projects</p> <p>f All biodiversity approach to link different groups with different objectives together towards a greater goal</p> <p>g Intensify and support current activity within existing resources</p> <p>h Identify all available resources and their role</p> <p>i Dog control</p> <p>j Employment opportunities</p> <p>k Explore how to work with the Department of Corrections more</p> <p>l Pull in other key projects e.g., Forest Bridge Trust</p>	Kiwi Coast networks TrapNZ DOC NRC Reconnecting Northland – Te Kete Hononga (in draft) Good to Grow	Admin support Streamline DOC paperwork Support to engage with landowners Support to better connect young people Funding for professional trappers Succession planning for projects Funding for employment Coordination Support to connect with DOC locally Engage with District Councils and Department of Corrections Engage with Kiwis for kiwi
1.4 Education and Training	NRC (Enviro-schools) Volunteering Northland Kiwi Coast DOC Birds NZ Reconnecting Northland	<p>a Create a more coordinated approach to predator control training across the region</p> <p>b Create career pathways e.g., for trappers</p> <p>c Develop formal qualifications - unit standards</p> <p>d Gain access to training and support with tools, methods and best practices</p> <p>e Provide project management training</p> <p>f Provide people management training</p>	Enviro-schools Papa Taiao Existing training workshops Kiwi Coast networks Volunteering Northland Birds NZ Reconnecting Northland – Te Kete Hononga (in draft)	Coordinators Technical advice and support Engagement and activities Resources

Focus Area	Current Contributors to Progress Focus Area	Actions	Current Resource	Additional Investment Required
1.5 Youth and children	NRC (Enviro-schools)	a Engage with schools	Enviro-schools	Coordinators
	DOC	b Engage with youth	Papa Taiao	Technical advice and support
	Community conservation groups	c Train educators	Education events	Engagement and activities
		d Engage with taitamariki at Ngā Tupuranga o Te Taitokerau Youth Leadership Summit	Whangārei Youth Forum	Resources
		e Develop and include units in school curriculum		
		f Plan a clear pathway to involve young people		
1.6 Volunteering	Volunteering Northland	a Grow the volunteer database	Farm Source stores	Technical advice and support
	Kiwi Coast	b Celebrate the success of volunteers and show appreciation	Volunteering Northland	Expertise training
	DOC	c Build fun into volunteering opportunities	Kiwi Coast networks	Volunteer coordinators
	NRC	d Provide access to information	Current time and commitment	Workshops
	Community conservation groups	e Support volunteers with communications, training, mentoring, advice and support	Access to some funding	
	Forest and Bird	f Build in a wellbeing aspect of volunteering	Professional trappers	
		g Develop bi-annual workshops for volunteers	Key leadership	
		h Hold regular meetings	Volunteers	
		i Seek to align interest with opportunities	Northland expertise	

Focus Area	Current Contributors to Progress Focus Area	Actions	Current Resource	Additional Investment Required
1.7 Urban focus	NRC Urban community conservation groups DOC	<p>a Set goal for 1 in 4 urban Whangārei householders to maintain a rat trap</p> <p>b Set goal for 50% of Whangārei schools to be involved in predator control</p> <p>c Involve urban kindergartens</p> <p>d Employ a full-time paid professional trapper</p>	<p>Tiakina Whangārei</p> <p>DOC community rangers</p> <p>PF Whangārei</p> <p>PF Bay of Islands</p> <p>Urban community conservation groups</p>	<p>Engage with Whangārei District Council</p> <p>Support Tiakina Whangārei</p>
1.8 Planning and coordination	NRC DOC Reconnecting Northland Community conservation groups Kiwi Coast	<p>a Focus on peninsulas and corridors</p> <p>b Develop regional planning to identify priorities</p> <p>c Take a landscape scale, integrated approach</p> <p>d Provide an ecological stocktake</p> <p>e Develop shared planning sessions</p> <p>f Regional coordination that is aimed at empowering and supporting communities</p> <p>g Create and build timelines with 1, 3 and 5-year goals</p> <p>h Employ regional coordinators</p> <p>i Build on already funded PF projects</p> <p>j Expand sustained control strategically</p> <p>k Build PF2050 actions into NRC and DOC business plans</p>	<p>Existing PF projects</p> <p>DOC</p> <p>NRC</p> <p>Piroa-Brynderwyns 10 year plan</p> <p>Acoustic tests</p> <p>Species counts</p> <p>Bird counts</p> <p>Reconnecting Northland – strategic and operational planning support within existing tapere (sub-districts)</p>	<p>Regional coordination and leadership</p> <p>Technical advice and knowledge</p> <p>Strategic planning design</p> <p>Engage with Kiwis for kiwi</p>

Focus Area	Current Contributors to Progress Focus Area	Actions	Current Resource	Additional Investment Required
2.1 Social license	Community conservation groups Forest and Bird DOC, NRC Fonterra, Beef + Lamb NZ Northland Inc Environs Te Uri o Hau	<p>a Tackle misinformation on 1080</p> <p>b Create incentives to get involved</p> <p>c Build in wellbeing aspects of PF2050</p> <p>d Develop more Bioblitz's</p> <p>e Research barriers and incentivise engagement</p> <p>f Develop materials that are inclusive of the farming sector and promote best practice</p>	Forest and Bird Tiakina Nga Manu Fonterra Northland Inc Environs Te Uri o Hau Farm Council meetings (checking messaging and engagement)	Communications and engagement strategy Social science research/design Engagement activities and resources
2.2 Growing Awareness	All of us DOC NRC Community conservation groups Kiwi Coast Reconnecting Northland Forest and Bird Fonterra Beef + Lamb NZ Northland Forestry Forum QEII	<p>a Consistent promotion of what's happening with the different PF projects</p> <p>b Promote benefits to climate change, tourism, environment, wellbeing, export industry etc.</p> <p>c Design a Te Tai Tokerau vision that focuses on what Northland will gain from becoming predator free e.g., taonga species</p> <p>d Promote the benefits and successes - investment vs cost</p> <p>e Send out regular community newsletters</p> <p>f Optimise the use of online tools e.g., blogs, webinars</p> <p>g Develop messaging on the difference between suppression and eradication</p> <p>h Showcase what the future PF vision looks like through videos, stories, animations etc.</p> <p>i Increase awareness of biodiversity and PF2050</p> <p>j Link in with national PF2050 campaign</p> <p>k Ensure PF2050 Te Tai Tokerau members are using consistent key messages</p> <p>l Utilise PF as a platform for growing support for other conservation actions</p> <p>m Develop and provide community-based field days</p>	National PF2050 communications and engagement NRC communications and engagement Existing communications channels National PF2050 campaign Project Facebook pages Nature-based accounting Kiwi releases Community workshops Education events Kiwi Coast networks Farm Source stores Existing forums TrapNZ	Develop Te Tai Tokerau vision Communications and engagement strategy Visible brand for Northland that identifies supporters Team of storytellers Investment into communications/science communicators Access to materials for websites

Focus Area	Current Contributors to Progress Focus Area	Actions	Current Resource	Additional Investment Required
3.1 Skill building	Kiwi Coast	a Develop and provide trap training days	ZIP	Support from agencies to trial new ideas and options
	NRC	b Provide training on new equipment/methodology e.g., drones, traps	Kiwi Coast networks	Research and development support
	DOC	c Experiment with new methods	NRC	Better coordination across agencies
	Volunteering Northland	d Support development of PF demonstration sites as learning resources	DOC	Access to trainers
	Reconnecting Northland	e Share learnings, best practices, replicable tools and approaches	Volunteering Northland	Engage Landcare Research and ZIP
	QEII	f Run Bioblitz events to promote experiences in nature	Reconnecting Northland- Te Kete Hononga (in draft)	Training
	Environs Te Uri o Hau	g Tap into existing research projects	QEII	Bioblitz
	Birds NZ	h Learn from existing funded PF projects	Environs Te Uri o Hau	
	Community conservation groups	i Develop and provide community-based field days for knowledge sharing	Landcare Research	
			Birds NZ	
			Farm Source stores	
3.2 Information	Volunteering Northland	a Provide easy-to-find information on tools, training, funding options, resources, best practices, sources of advice, mentoring and learning	Volunteering Northland	Online information hub
	Kiwi Coast	b Share success and failures	Kiwi Coast networks	Platform for connecting and learning
	Reconnecting Northland	c Ensure online access to templates and guides	Reconnecting Northland	Access to free open-source data
	DOC	d Work with universities to identify information gaps	DOC	Involve universities
			NRC	

Focus Area	Current Contributors to Progress Focus Area	Actions	Current Resource	Additional Investment Required
3.3 GIS	DOC NRC Reconnecting Northland	a Develop and create GIS maps to show where effort is going b Share data and knowledge	Existing GIS data Reconnecting Northland – Taiao Connect	GIS platform
3.4 Monitoring and reporting	Kiwi Coast DOC NRC QEII Reconnecting Northland Northland Inc	a Develop local and regional monitoring plans b Focus on outcome monitoring c Identify indicator species d Develop best practices regarding predator control methodology e Create baseline surveys f Measure social wellbeing g Increase data collection h Increase use of citizen science	Kiwi Coast networks Reconnecting Northland – Te Kete Hononga (in draft) DOC NRC Northland expertise Acoustic tests Species count Kiwi transmitters Bioblitz Current data collection QEII Tourism sector Significant Natural Areas (SNA's)	Technical advice and support Mentoring Assistance with analysis Coordination Monitoring plan development

4

Key Theme. *Mahitahi ki Ngā Tangata Whenua***Working with Tangata Whenua. *Mahitahi ki Ngā Tangata Whenua***

Focus Area	Current Contributors to Progress Focus Area	Actions	Current Resource	Additional Investment Required
4.1 Cultural capability	DOC NRC	a Provide training and support on understanding Te Tiriti o Waitangi and incorporating Mātauranga Māori	Passionate individuals who can support engagement/increased cultural understanding	Training, support and advice Access to expertise and advice
4.2 Involving mana whenua	DOC NRC Reconnecting Northland Community conservation groups	a Find hapū activators b Respect multiple time pressures on Tangata Whenua c Ensure sign off on plans from mana whenua d Create and develop invitations to come on board e Co-design projects and programmes f Assist with joint funding applications g Create employment opportunities h Work with local marae i Involve mokopuna j Ensure data sovereignty	Reconnecting Northland – facilitate connections within existing tapere (subdistricts) Existing relationships Some iwi trusts are already involved Overlap of principles/goals Te Kahu o Taonui	Help to build connections Help to on interpret and apply Mātauranga Māori Support to build iwi and hapū capacity
4.3 Inclusion	All of us	a Create a culture of openness and respect b Encourage iwi and hapū involvement c Make time to kōrero, listen and learn d Provide education on Te Ao Māori, Te Tiriti and Mātauranga Māori e Develop marae-based wānanga f Increase the use of Te Reo	Existing relationships	Space to fail and learn Training, support and advice More resources for mana whenua

Focus Area	Current Contributors to Progress Focus Area	Actions	Current Resource	Additional Investment Required
5.1 Funding	Kiwis for kiwi DOC NRC	<p>a Develop costings to deliver Te Tai Tokerau pathway</p> <p>b Bring current funding bodies together to explore a more collaborative and simplified approach including allocation and reporting</p> <p>c Explore long-term funding approach</p> <p>d Offer people options to donate</p> <p>e Set up regional prioritisation for funding</p> <p>f Provide funding for more self-setting traps</p> <p>g Explore alternative options for funding</p> <p>h Support ongoing predator control from Jobs for Nature investment beyond 2023</p> <p>i Explore paid opportunities to connect to nature</p>	<p>Reconnecting Northland - explore alternative funding models across multiple ecological outcomes within tapere (subdistricts)</p> <p>Kiwis for kiwi</p> <p>NRC</p> <p>DOC</p> <p>Foundation North</p> <p>PF2050 Ltd</p>	<p>Donations platform</p> <p>Regional funding model</p> <p>Funding support hub</p> <p>Improved reporting approach</p> <p>Cooperative funding approach</p> <p>Funding for DOC reserves in catchments</p> <p>Sustainable funding options</p> <p>Funding coordination</p> <p>Engage with Foundation North and PF2050 Ltd</p> <p>Engage with Kiwis for kiwi</p>
5.2 Tools	DOC NRC Fonterra Community conservation groups	<p>a Provide easier access to traps</p> <p>b Improve knowledge and access to latest technology</p> <p>c Expand use of 1080</p> <p>d Expand use of drones</p> <p>e Expand use of trail cams</p> <p>f Develop citizen science apps</p>	<p>The Men's Sheds (trap making)</p> <p>Fonterra</p> <p>Farm Source stores</p> <p>Donated timber</p> <p>Some paid part-time work</p> <p>ZIP</p> <p>PF2050 network</p> <p>TrapNZ</p> <p>NRC</p> <p>Bioweb</p>	<p>Subsidies for predator control tools</p> <p>Technical advice and support</p> <p>Trail cams and drones</p> <p>Open-source camera monitoring analysis</p> <p>Engage with ZIP</p>



Appendices

Tāpiritanga

1. List of contributors to this pathway plan
2. Te Tai Tokerau/Northland Predator Free 2050 Action Plan Scoping Research Summary
3. Towards a Predator Free New Zealand. [Predator Free 2050 Strategy](#) and [Predator Free 2050 5-year Action Plan](#)
4. Map: Te Tai Tokerau Jobs for Nature projects that have a focus on predator control
5. Map: PF2050 5 year pathway planning – Te Tai Tokerau

List of contributors to this pathway plan

Projects / Organisations	Attendee
Backyard Kiwi	Todd Hamilton
Beef + Lamb NZ	Veronica Gillet
Birds NZ Northland Branch	John Ballinger
Bream Head / Te Whara Conservation Trust	Adam Willets
Bream Head / Te Whara Conservation Trust	Geoff Pike
Bream Head / Te Whara Conservation Trust	John Gardiner
Department of Conservation	Carolyn Smith
Department of Conservation - BOI	Dan O'Halloran
Department of Conservation - BOI	Maddy Powers
Department of Conservation - Kaitaia	Abe Witana
Department of Conservation - Kaitaia	Phillip Brown
Department of Conservation - Kauri Coast	Anja Meduna
Department of Conservation - PF Programme Manager	Brent Beaven
Department of Conservation - Whangārei	Kallan Mertens
Dragon Springs Wetland Sanctuary	Jeremy Busck
Eastern Bay of Islands Preservation Society	Sandra Scowen
Ecologist	Amy Bazeley
Environs Te Uri o Hau (formerly IKHMG)	Patricia Clark
Environs Te Uri o Hau (formerly IKHMG)	Melissa Barrell
Enviroschools	Susan Karels
Farmers	Peggy Morrison
Farmers	George Morrison
Fish and Game NZ	Graham Gallagher
Fonterra	Helen Moodie
Forest and Bird	Dean Baigent Mercer

Projects / Organisations	Attendee
Friends of Kapiro Rangitane Stream	Melanie Miller
Hancock Forest Management	Tony Dwane
Honeymoon Valley Landcare Trust	Bernard Coogan
Honeymoon Valley Landcare Trust	Tor Steinemann
Honeymoon Valley Landcare Trust	Yvonne Steinemann
Hupara Landcare	Peg Kashuba
Hupara Landcare	Yue Kalei Tutt
Kaitiaki Kiwi	James McLaughlin
Kiwi Coast	Andrew Mentor
Kiwi Coast	Lesley Baigent
Kiwi Coast	Ngairé Sullivan
Kiwi North	Shirley Peterson
Mahineapua Radar Hill Landcare Group	Martin Schmid
Mahineapua Radar Hill Landcare Group	Mary-Anne Schaab
Mahineapua Radar Hill Landcare Group	Jen Ritchie-Campbell
Mahineapua Radar Hill Landcare Group	Brian Putt
Mahineapua Radar Hill Landcare trapper	Lyndon Hurst
Matakohe Architecture and Urbanism Ltd	Nicki Wakefield
Matakohe Architecture and Urbanism Ltd	Ngairo Tahere
Matakohe Architecture and Urbanism Ltd	Te Kaurinui Robert Parata
Matakohe Architecture and Urbanism Ltd	Hollie Russell
Matakohe Architecture and Urbanism Ltd	Robyn Tauroa
Matakohe Architecture and Urbanism Ltd	members of Patuharakeke Te Iwi

List of contributors to this pathway plan

Projects / Organisations	Attendee	Projects / Organisations	Attendee
Maungataniwha	Ngawai Tuscon	Puketotara Landcare Group	Andrew Mentor
MP for Whangārei	Dr Emily Henderson	QEII	Greg Blunden
MP for Whangārei Youth Forum	Attending students	QEII	Harry Blunden
Nga Tupuranga o Te Taitokerau	Youth attendees	Reconnecting Northland	Andrea Booth
Northland Inc	Amy Simpkin	Reconnecting Northland	Eamon Nathan
Northland Regional Council	Pete Graham	Rural Women NZ - Far North	Heather Sorensen
Northland Regional Council	Ripley Dean	Russell Landcare Trust	Chris Richmond
Northland Regional Council	Don McKenzie	Summit Forests	Karen Lucich
Northland Regional Council	Kane McElrae	Tiakina Whangārei	Dai Morgan
Northland Regional Council	Rolf Fuchs	Trapper	Steve Allan
Northland Taitamariki	Attending youth	Trapper	Morne van Zyl
Northland Youth Theatre	Attending youth	Tutukaka Landcare Coalition	Mike Camm
NZ Forest Restoration Trust	James McLaughlin	Tutukaka Landcare Coalition	Ian Skipworth
Parihaka Landcare	Dai Morgan	Volunteering Northland	Bart van der Meer
Pest Free Kaipara	Shaun Holland	Waimate North Landcare Trust	Daryl Way
Piroa/Brynderwyns Landcare	Peter Hunt	Waipoua Forest Trust	Georgina Read
Piroa/Brynderwyns Landcare	Ann Neill	Waipu Ratepayers	Glenice Lyon
Project Island Song	Richard Robbins	Waipu Ratepayers	John Horrocks
Pukenui Western Hills	Neil Cameron	Waitangi National Trust	Nicole Wihongi
Pukenui Western Hills	Ben Lovell	Wekaweka Landcare	Georgina Read
Puketi Forest Trust	John Dawn	Whananaki Landcare	Greta Harman

Te Tai Tokerau/Northland Predator Free 2050 Action Plan Scoping Research Summary

Community groups and stakeholders from across Te Tai Tokerau/Northland show strong support for, and high interest in being part of, creating a 5-year Predator Free 2050 (PF2050) regional action plan.

Research background

In 2020, a wide range of Te Tai Tokerau/Northland community groups and stakeholders were interviewed about their interest in helping create a 5-year PF2050 action plan for their region.

Scope research results

The results of this scoping research phase indicated strong support from those community groups and stakeholders who took part in the future development of a 5-year PF2050 action plan for Te Tai Tokerau/Northland.

Key points from feedback:

- Supporting existing conservation efforts in local places.
- Growing collaboration through improved communications, access to tools, advice, and networking.
- Working at local, district, and regional levels.

- Regionally based organisations working collaboratively to support local conservation efforts.
- Landscape scale approach needed to reduce duplication, maximise effort and support holistic approach to restoration.
- PF2050 currently a top-down Government goal; needs to be supported and reshaped to become a grassroots movement in Te Tai Tokerau.
- Predator Free funding should support current and new community-based and community-driven pest control.
- Reduce public confusion by promoting PF2050 goals.
- Involve local iwi/hapū, community conservationists, farmers, hunters and trappers as advisors in action plan development.

Te Tai Tokerau community group research results¹

Northland community groups took part in telephone interviews and online surveys.

Key themes:

- Most preferred to engage at a local rather than a district or regional level.
- Strong interest in pest eradication; reintroduction of native species; working collaboratively; community education and advocacy.
- Preferred being kept informed, consulted with and working at a local level and contributing to regional action plan.

Te Tai Tokerau community group recommendations¹

Key themes:

- Improved communication between PF2050 and local groups.
- Training in and access to predator control methods and processes, equipment.
- Organisational support for community groups e.g., mentoring, monitoring, predator prioritisation.
- Wider community support for Te Tiriti and Māori involvement, joint local and regional predator control planning.

- Sharing knowledge e.g., trapper skills.
- PF2050 should not be top-down, but provide opportunities for Northland community group involvement at a local level that contributes to district and regional PF2050.
- PF funding should support current, new community-based, community-driven pest control.
- Realistic, pragmatic respectful attitude towards existing local community pest control projects would help with community PF2050 buy-in.

Next steps – from scope to design

Based on community conservation group feedback, the following recommendations for developing the 5-year action plan are proposed:

- Reengagement with interested community groups.
- Planning workshop with organisations interested in regional level collaboration.
- GIS map created to identify opportunities for collaboration locally and regionally.
- Engagement with Te Tai Tokerau/Northland District and Regional Councils.

Reference

1. Ough Dealy, H. & Aley, J. (September 2020). Community Group PF2050 engagement preference Northland region: Research report. Report. Wellington NZ: DOC.

Date: Feb 2021; produced by Department of Conservation, reference: DOC 6559805

Links



[Towards a Predator Free New Zealand. Predator Free 2050 Strategy](https://doc.govt.nz/globalassets/documents/conservation/threats-and-impacts/pf2050/pf2050-towards-predator-freedom-strategy.pdf)

doc.govt.nz/globalassets/documents/conservation/threats-and-impacts/pf2050/pf2050-towards-predator-freedom-strategy.pdf



[Predator Free 2050 5-year Action Plan](https://doc.govt.nz/globalassets/documents/conservation/threats-and-impacts/pf2050/pf2050-action-plan.pdf)

doc.govt.nz/globalassets/documents/conservation/threats-and-impacts/pf2050/pf2050-action-plan.pdf

Te Tai Tokerau Jobs for Nature projects that have a focus on predator control

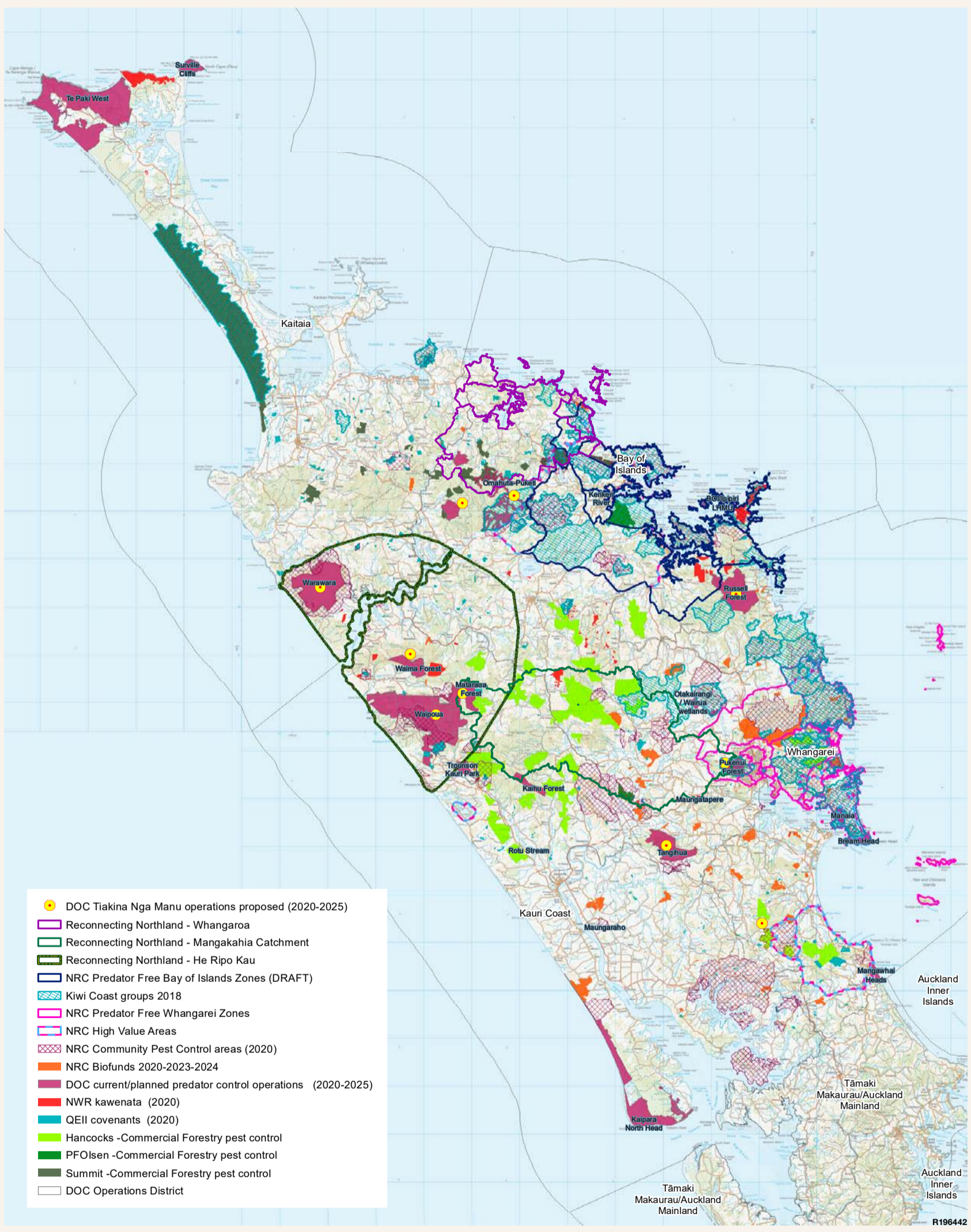
Projects

- Te Haumihi o Ngāti Kuri
- Te Arai Reserve
- Nga Mana o te wai
- Te Komanga Whangaroa
- Moemoea Puketi/Omahuta
- Opuā Forest Recovery
- Russell Forest 20-year plan
- Warawara Whakaora Ake
- Mahi-a-Tengatenga Kaitiaki Programme

Map produced by Level; August 2021; Data
supplied by Department of Conservation



PF2050 5-year pathway planning – Te Tai Tokerau



PF2050 5 year pathway planning - Te Tai Tokerau



NZGD 2000 New Zealand Transverse Mercator
Not for publication nor navigation | 1:725,318
Crown Copyright Reserved |
DOC, Geospatial Services | 6/08/2021

New Zealand Government



This plan was coordinated and designed by Department of Conservation – Carolyn Smith, Wendy Holland, and Level – Katy Mandeno.