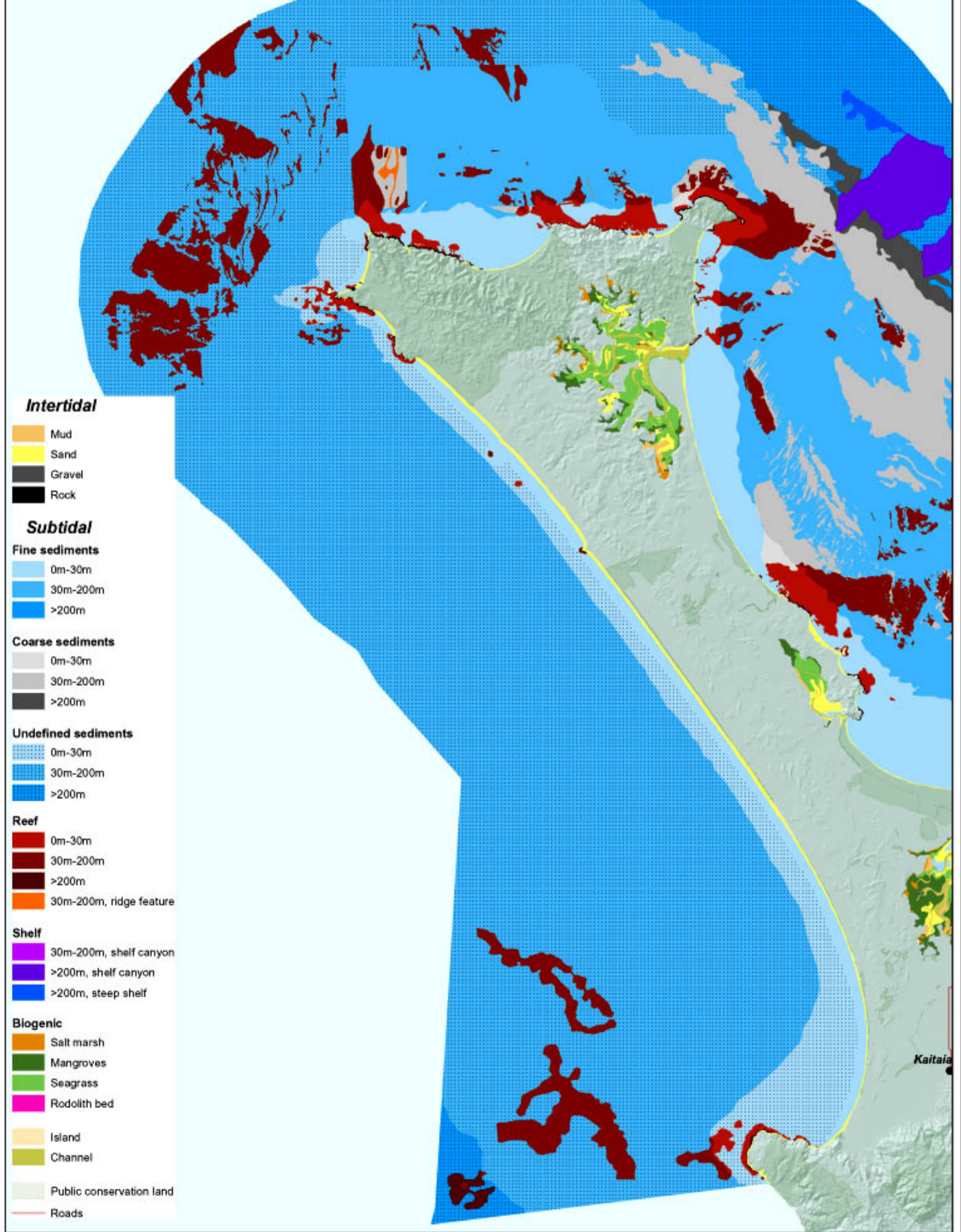
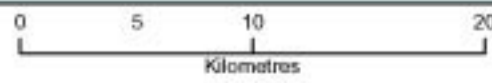


Northeast Bioregion

Northland section



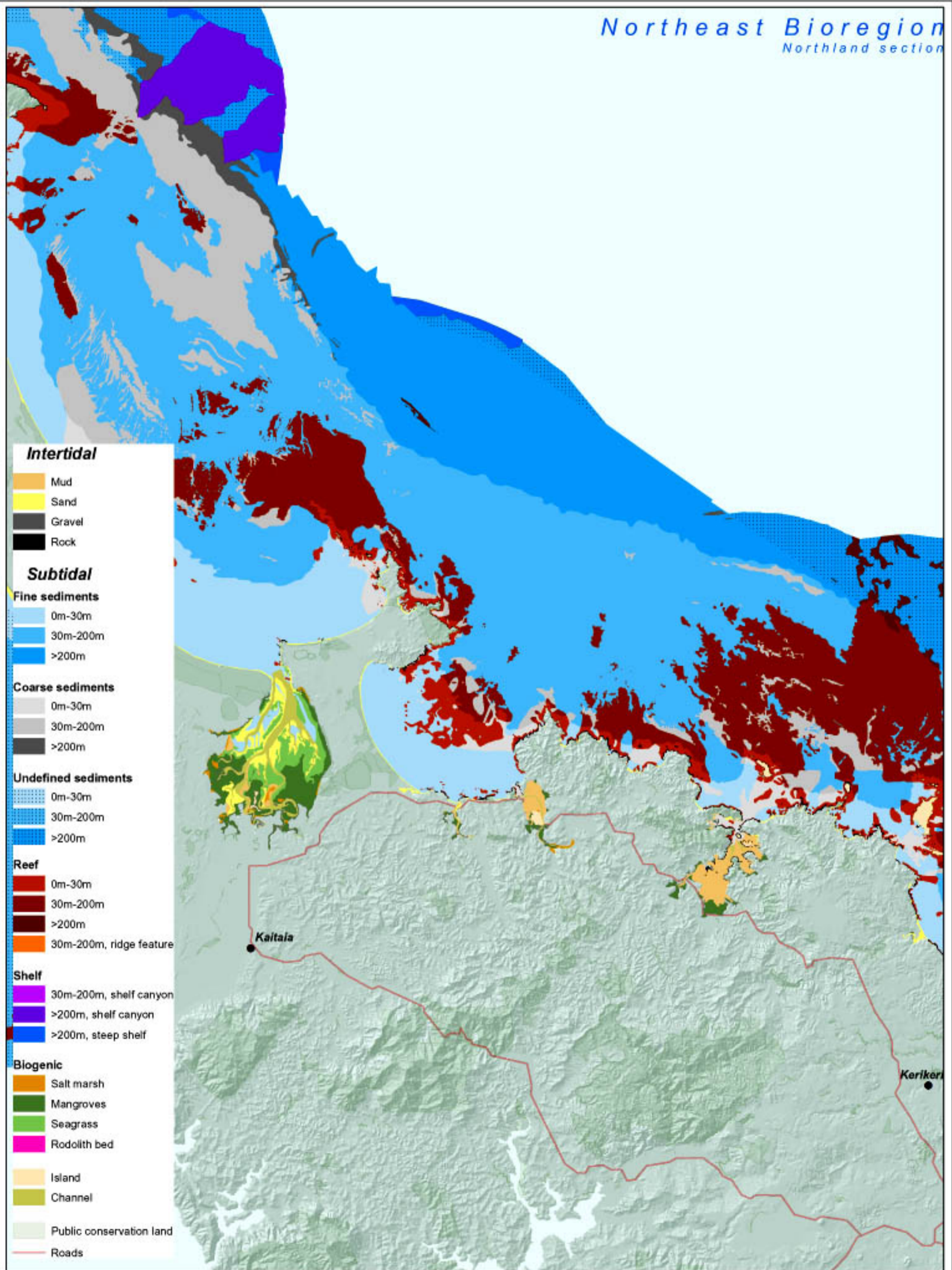
2a



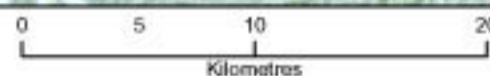
Department of Conservation
Te Papa Atawhai

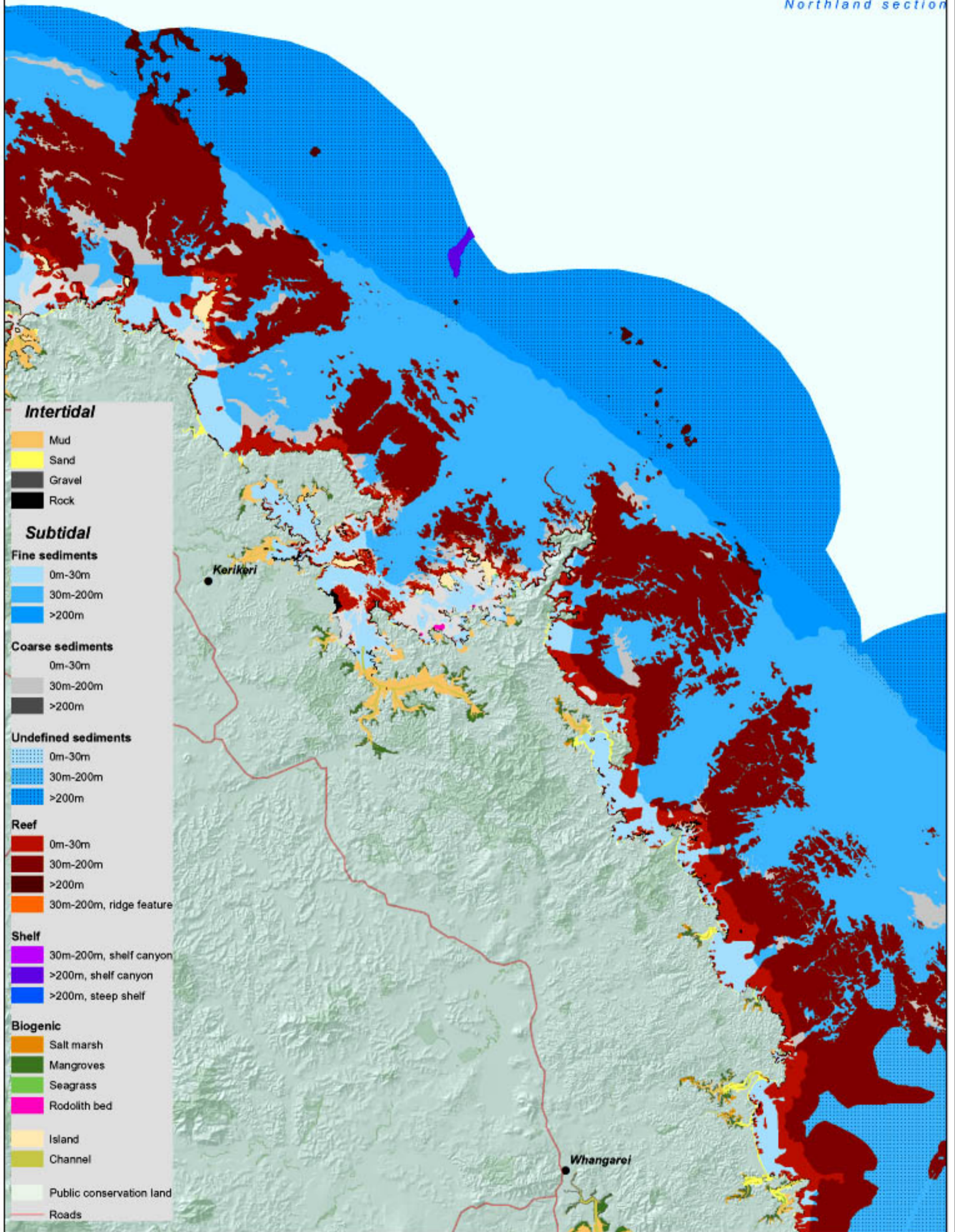
New Zealand Government
Te Kāwanatanga o Aotearoa

Northland MPA habitats (far north)



2b

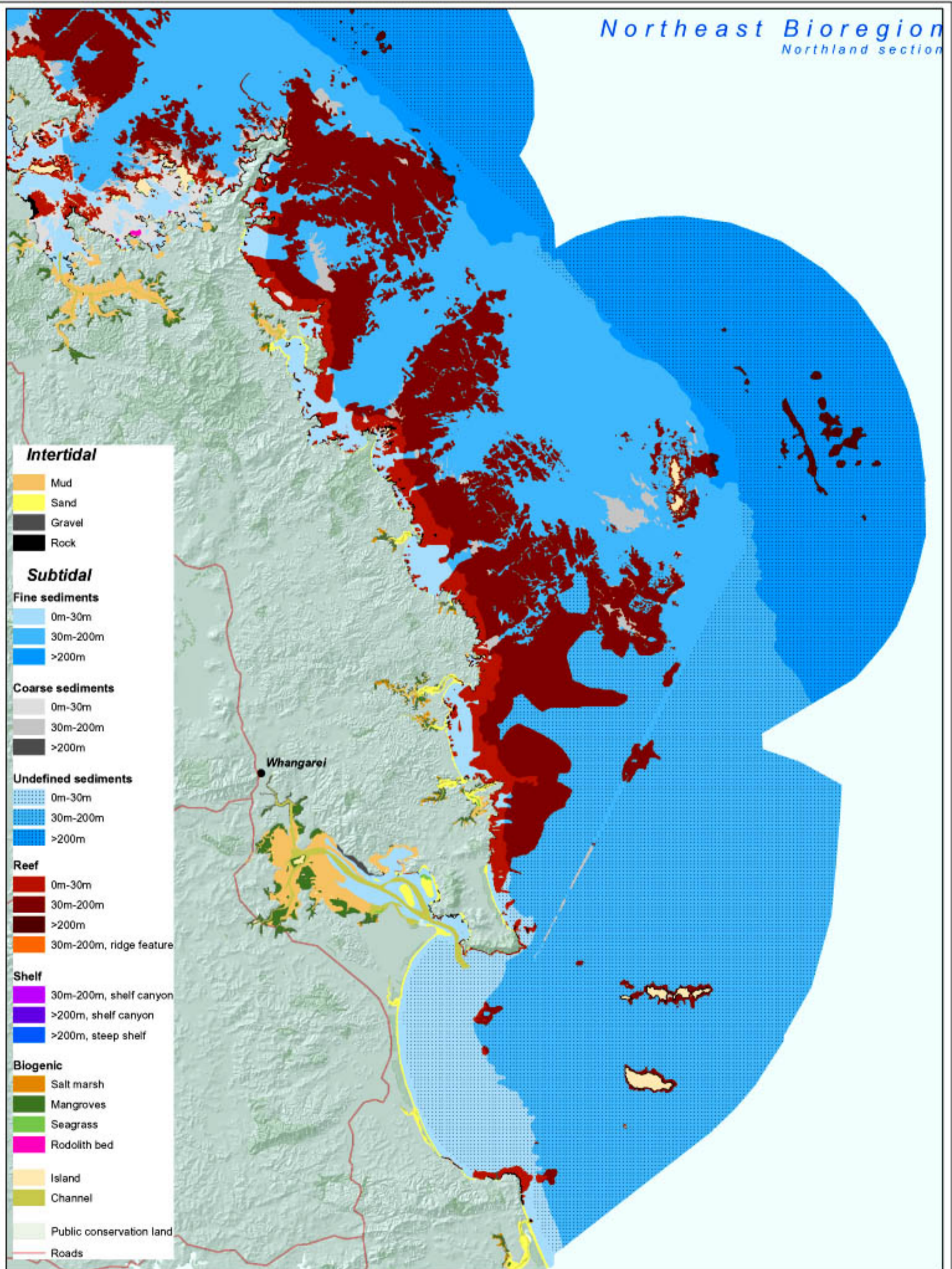




2c



Northland MPA habitats (mid north)



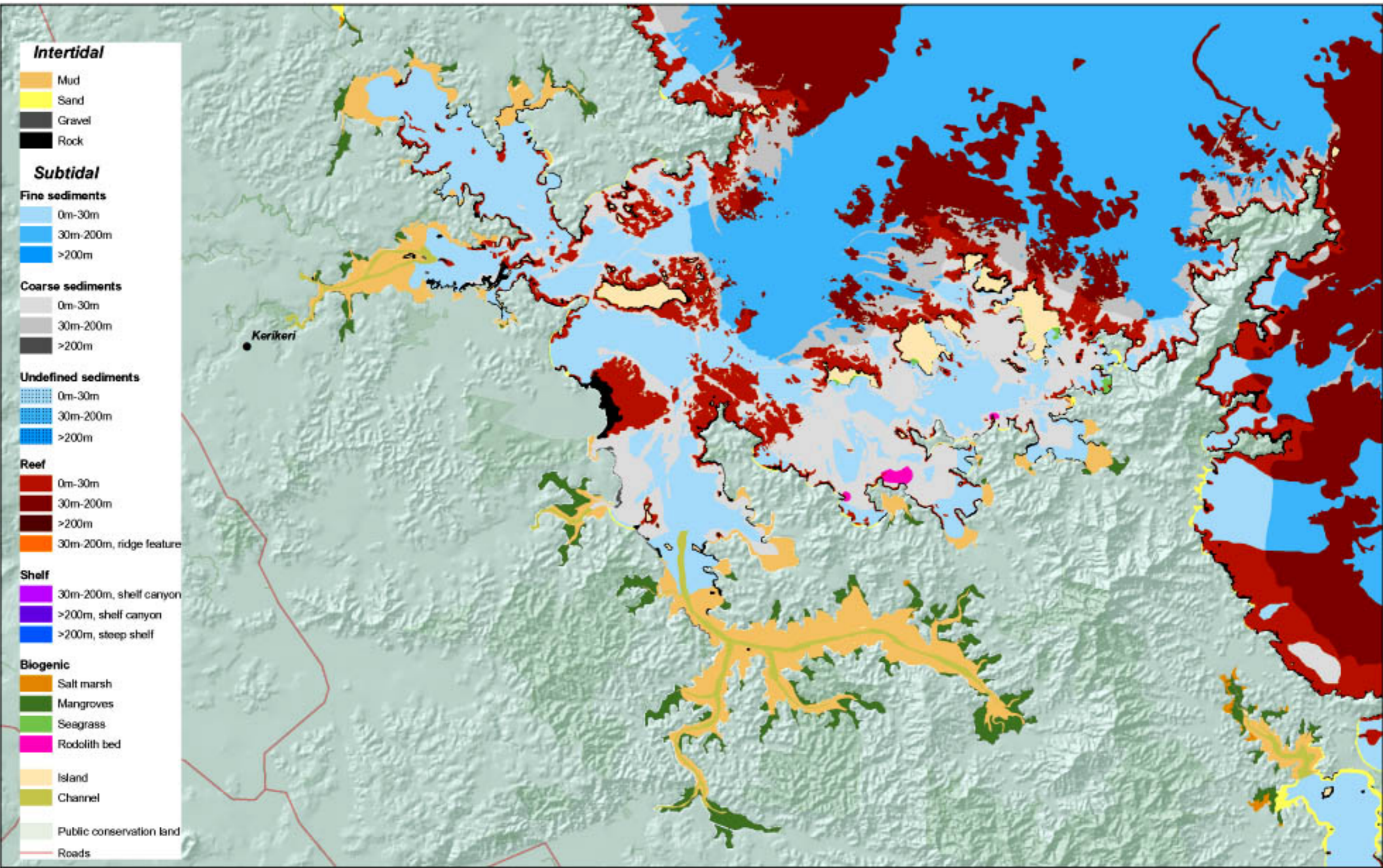
2d

0 5 10 20
Kilometres

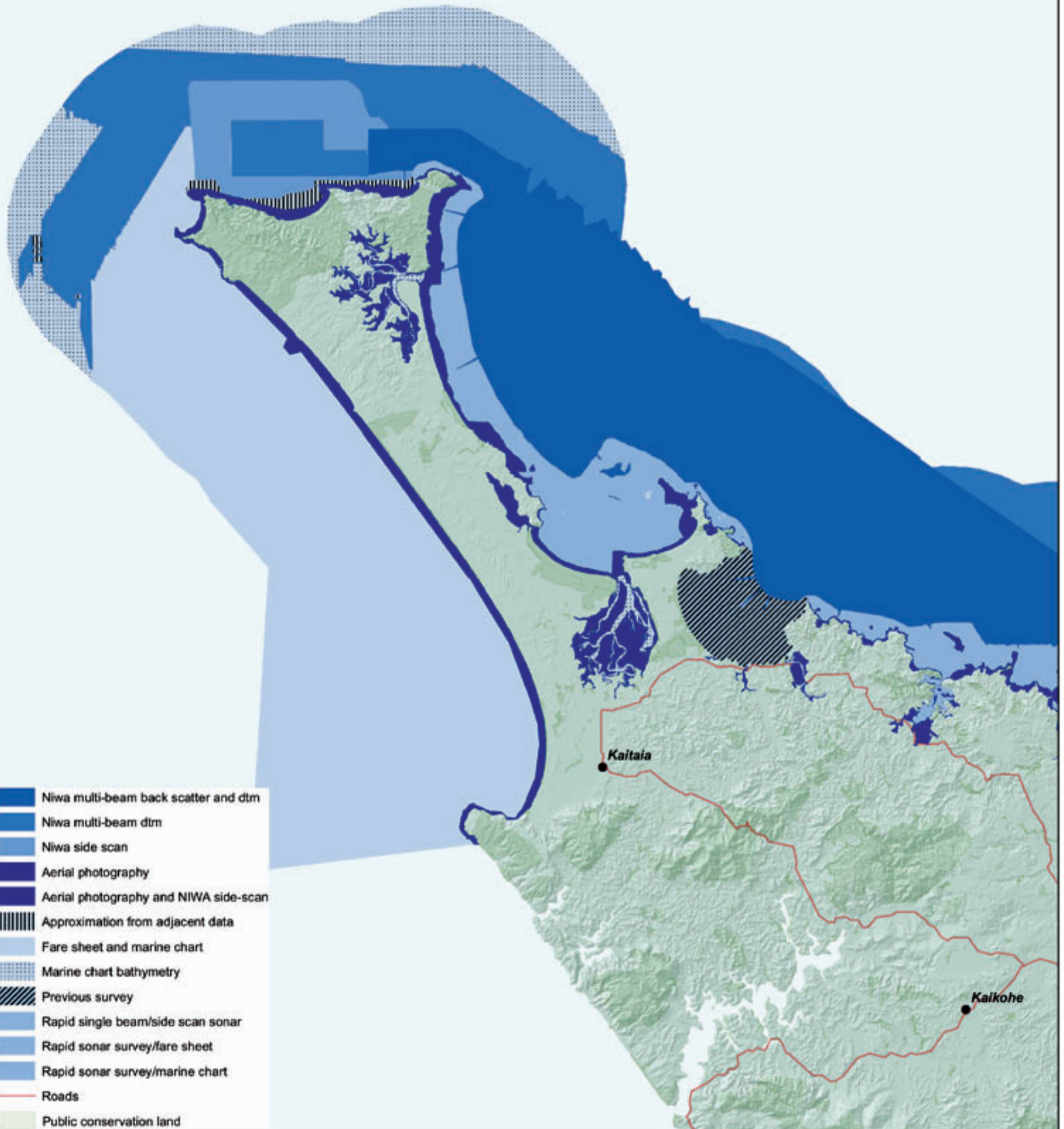
Department of Conservation
Te Papa Atawhai

New Zealand Government
Te Kāwanatanga o Aotearoa

Northland MPA habitats (lower north)



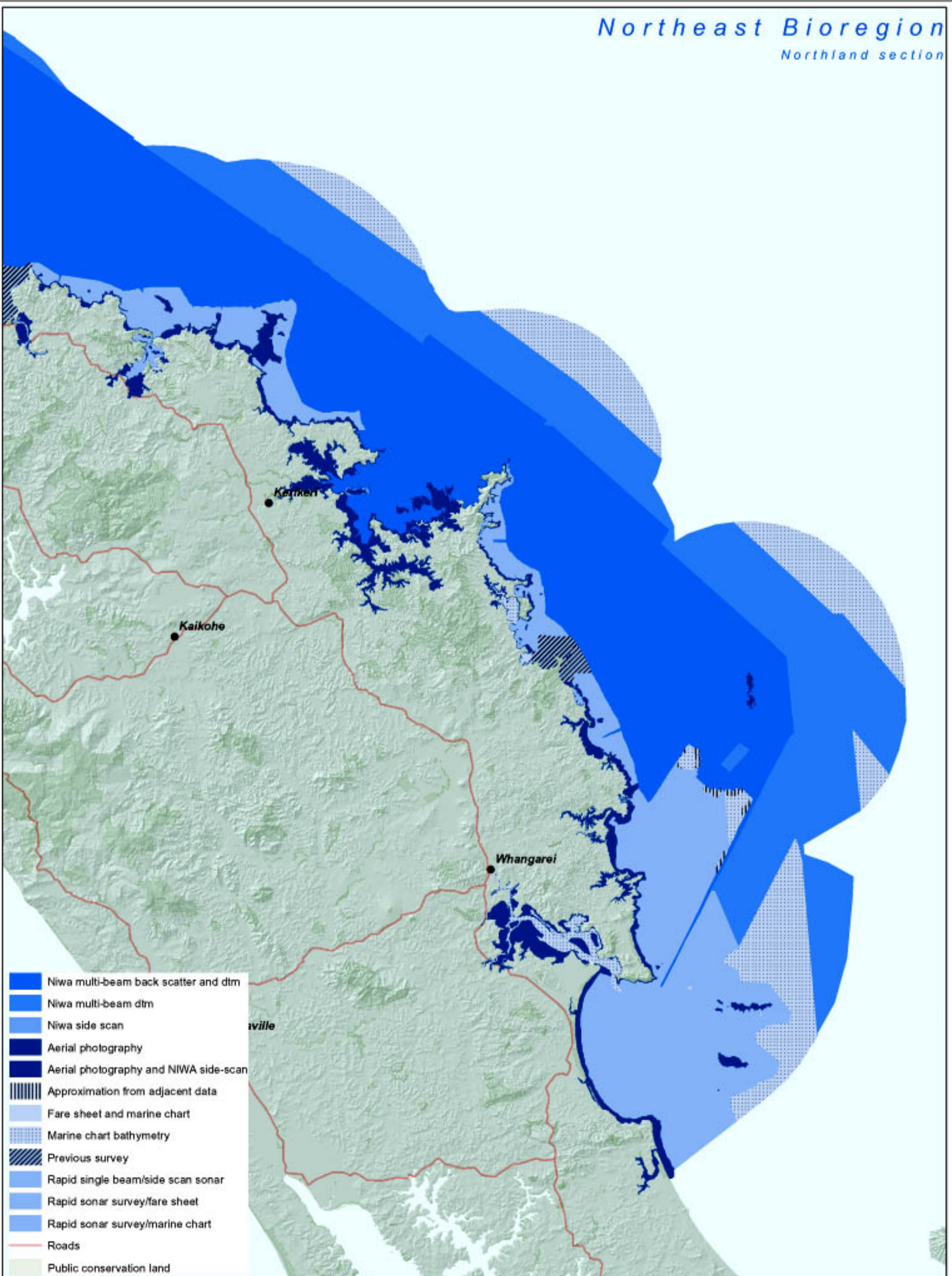
Northland MPA habitats (Bay of Islands)



4a.



Northland MPA Method Map (north section)



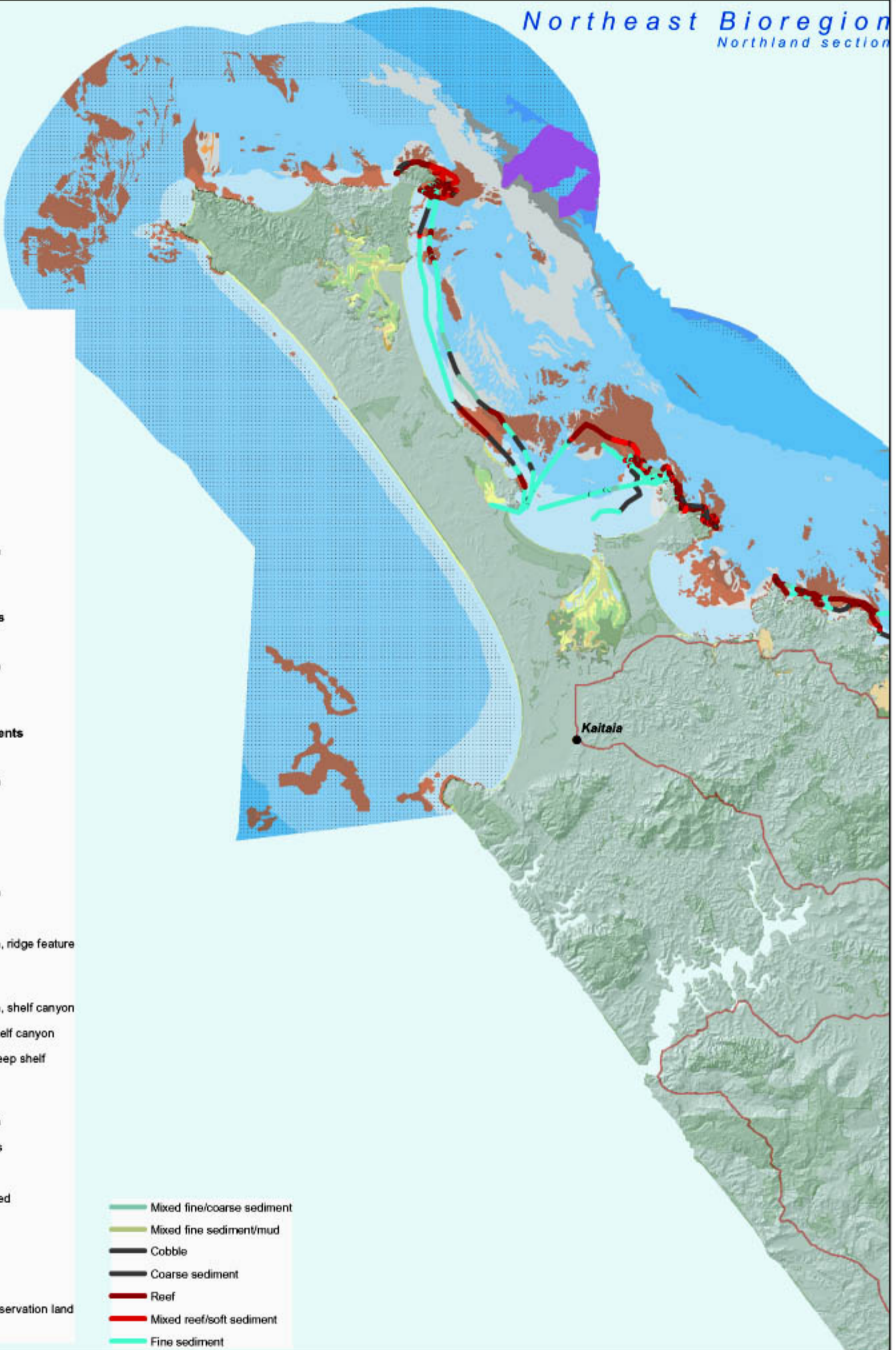
4b.



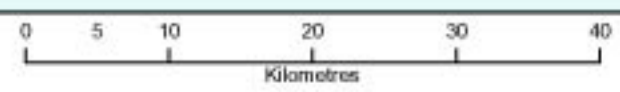
Northland MPA Method Map (south section)

- Intertidal**
- Mud
 - Sand
 - Gravel
 - Rock
- Subtidal**
- Fine sediments**
- 0m-30m
 - 30m-200m
 - >200m
- Coarse sediments**
- 0m-30m
 - 30m-200m
 - >200m
- Undefined sediments**
- 0m-30m
 - 30m-200m
 - >200m
- Reef**
- 0m-30m
 - 30m-200m
 - >200m
 - 30m-200m, ridge feature
- Shelf**
- 30m-200m, shelf canyon
 - >200m, shelf canyon
 - >200m, steep shelf
- Biogenic**
- Salt marsh
 - Mangroves
 - Seagrass
 - Rodolith bed
- Island
- Channel
- Public conservation land
- Roads

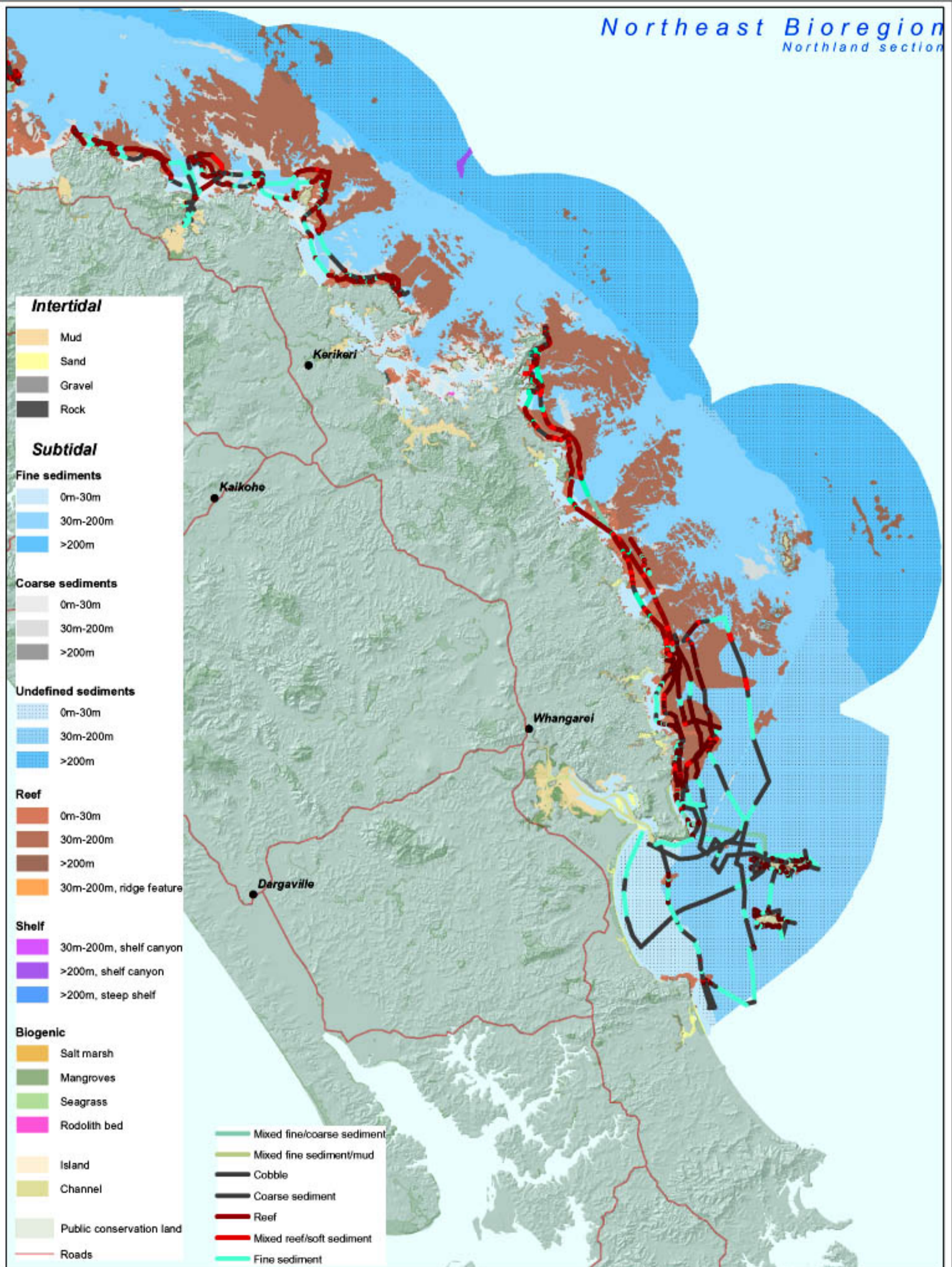
- Mixed fine/coarse sediment
- Mixed fine sediment/mud
- Cobble
- Coarse sediment
- Reef
- Mixed reef/soft sediment
- Fine sediment



5a.



Northland MPA rapid sonar survey (north section)



5b.

