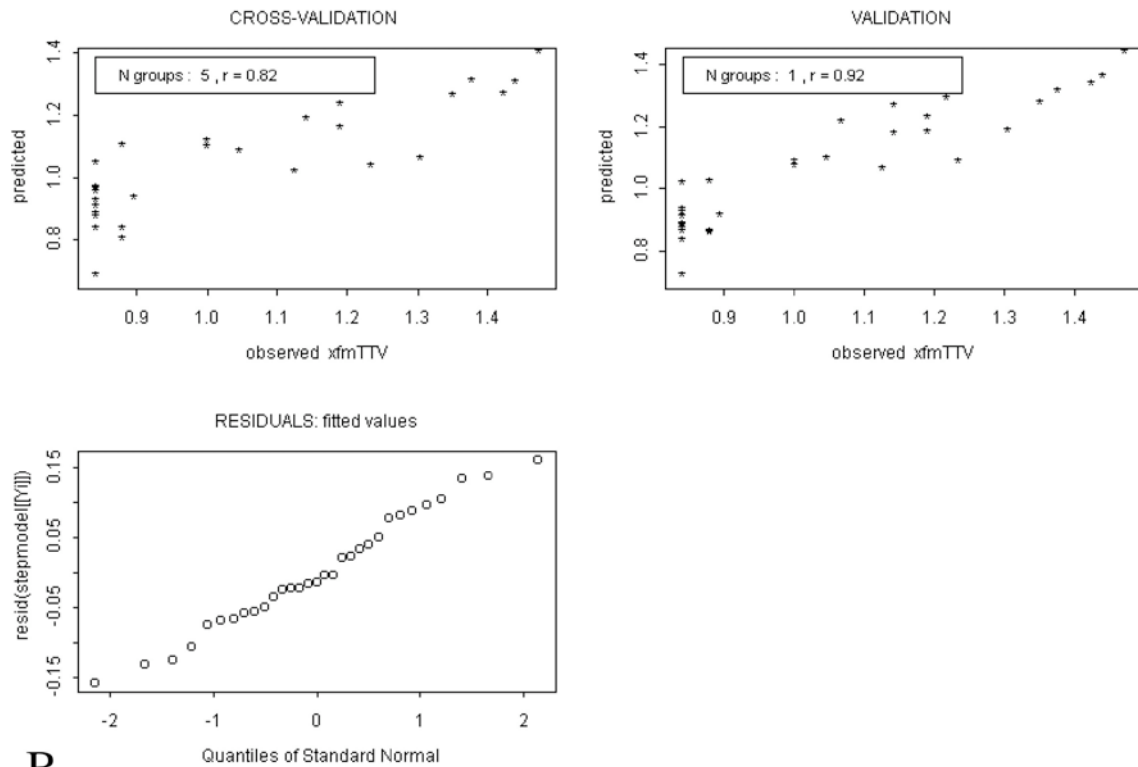


A.

$$\text{formula} = \text{YYY}8(\text{mfTTV} - s(\text{orbv.95}, 3) + s(\text{sst.mth.std}, 3) + Ds(\text{sstsanamp}, 3), \text{family} = \text{gaussian})$$

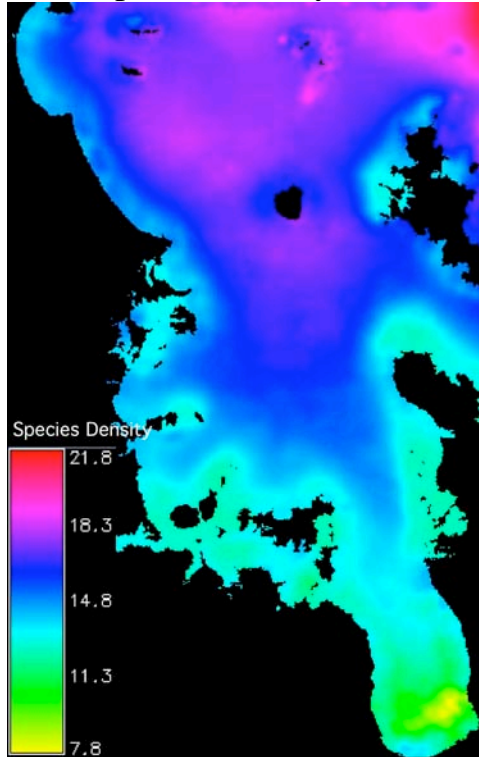


B.

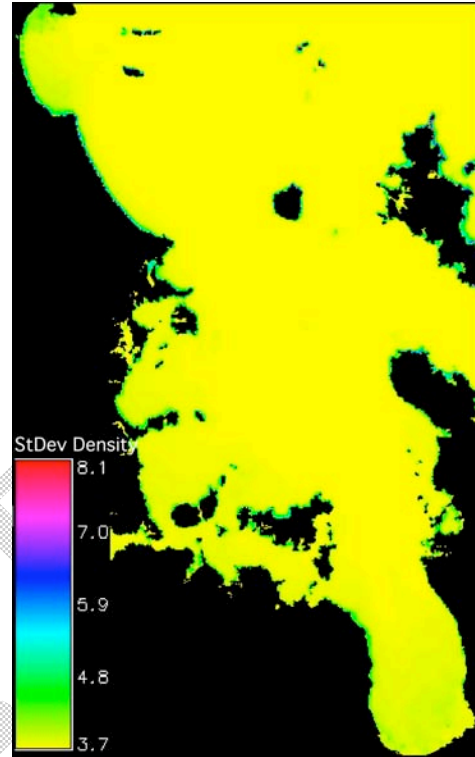
(S) Green Top Shell, *Trohus viridis*

Appendix V. Mapped Predictions from the GRASP (Generalised Regression and Spatial Prediction) Routine for Epifaunal Invertebrates, Cryptic Fishes and Mobile Invertebrates

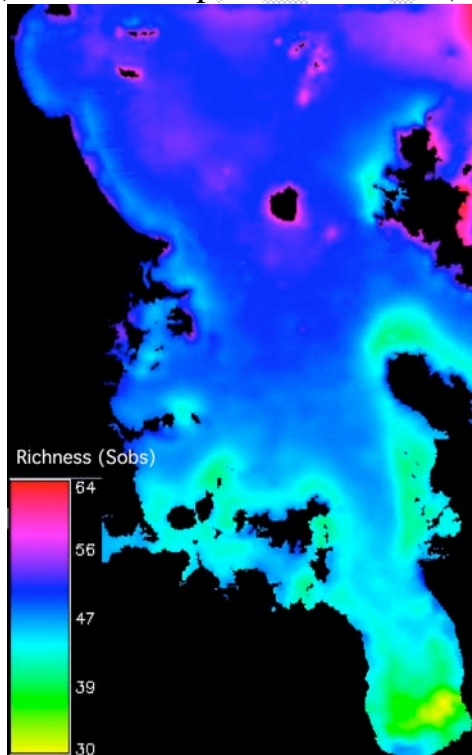
(A) Species Density/0.25 m²



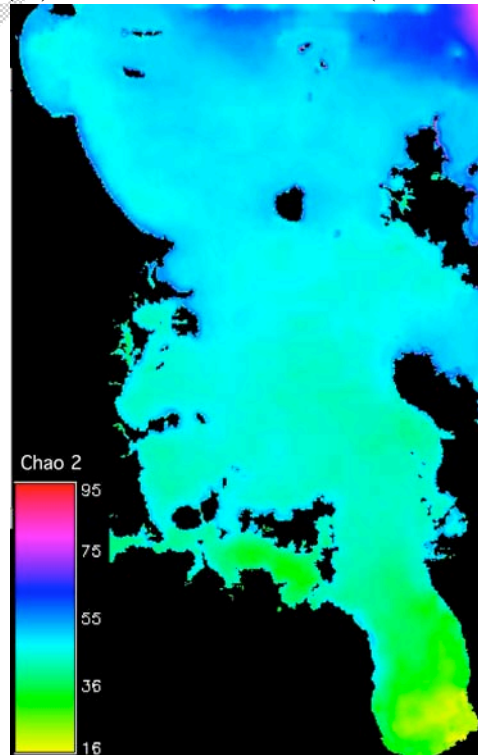
(B) Standard Deviation of Density



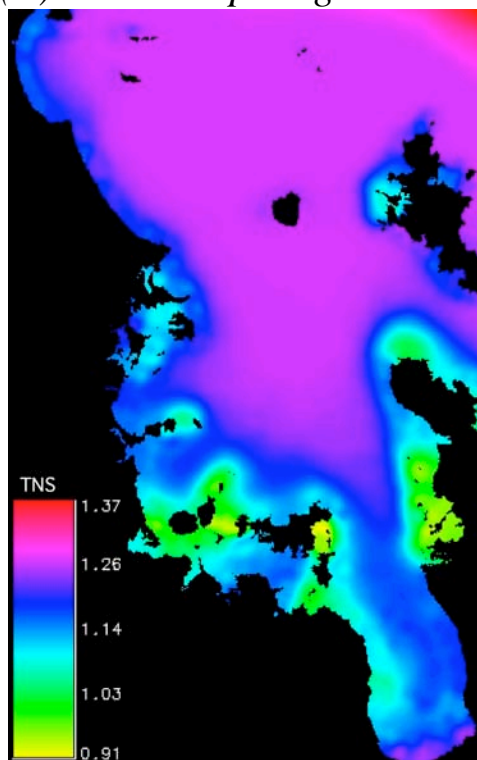
(C) Observed Species Richness (S_{obs})



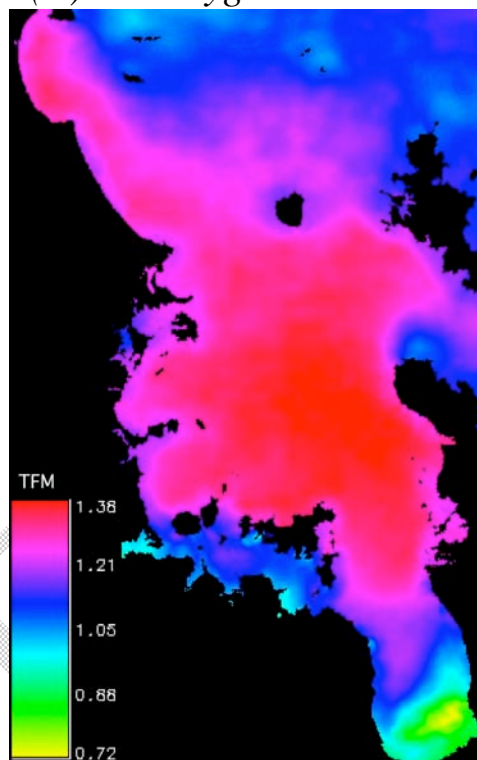
(D) Estimated Richness (Chao 2)



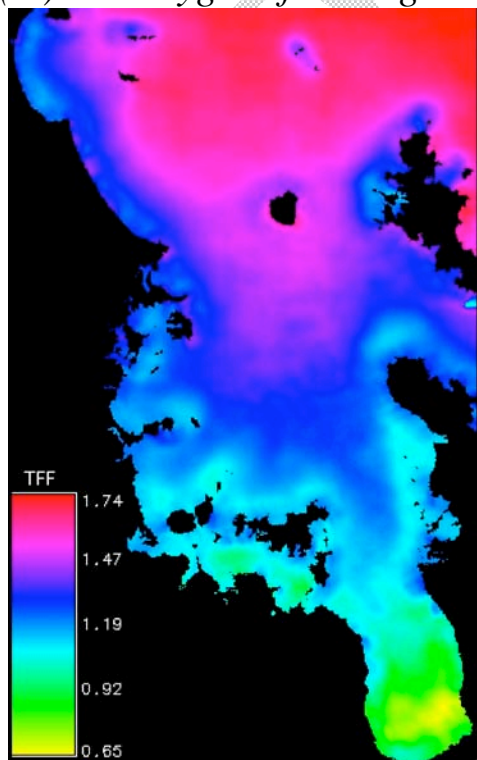
(E) *Notoclinops segmentatus*



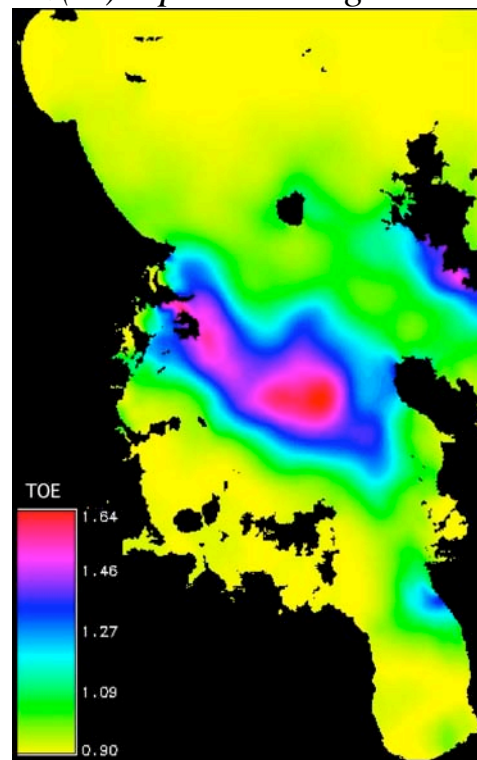
(F) *Fosterygion malcolmi*



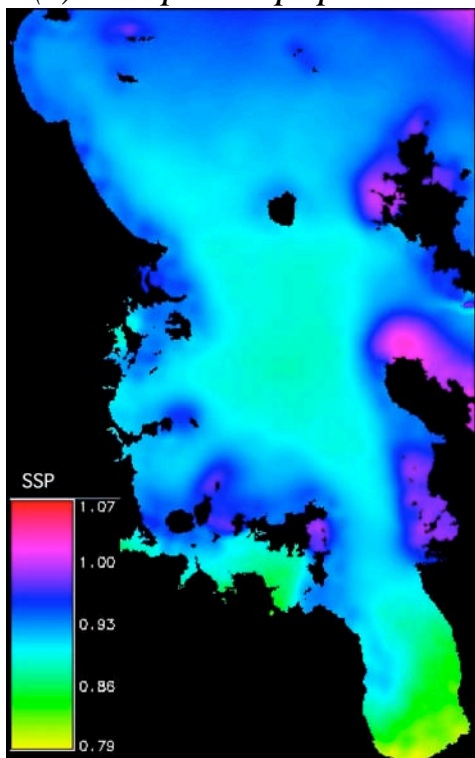
(G) *Fosterygion flavonigrum*



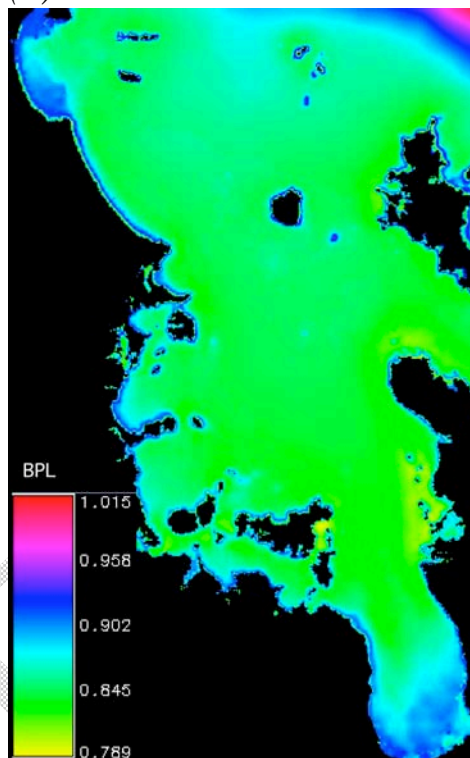
(H) *Optivus elongatus*



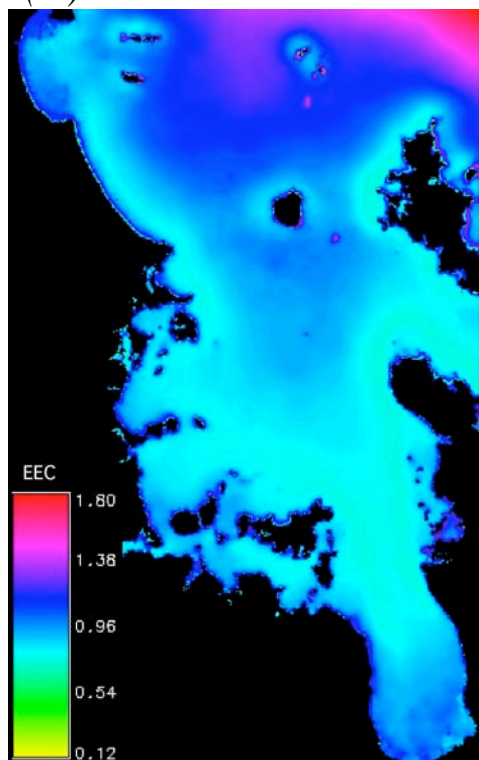
(I) *Scorpaena papillosus*



(J) *Parablennius laticlavius*



(K) *Evechinus chloroticus*



(L) *Cookia sulcata*

