

Figure 11: Sand flounder trawl survey abundance, 1982 - 2000, overlaid on acoustic class background.

Fish per km ²	
·	0
#	1 - 99
#	100 - 199
#	200 - 499
#	500 - 999
#	> 1 000

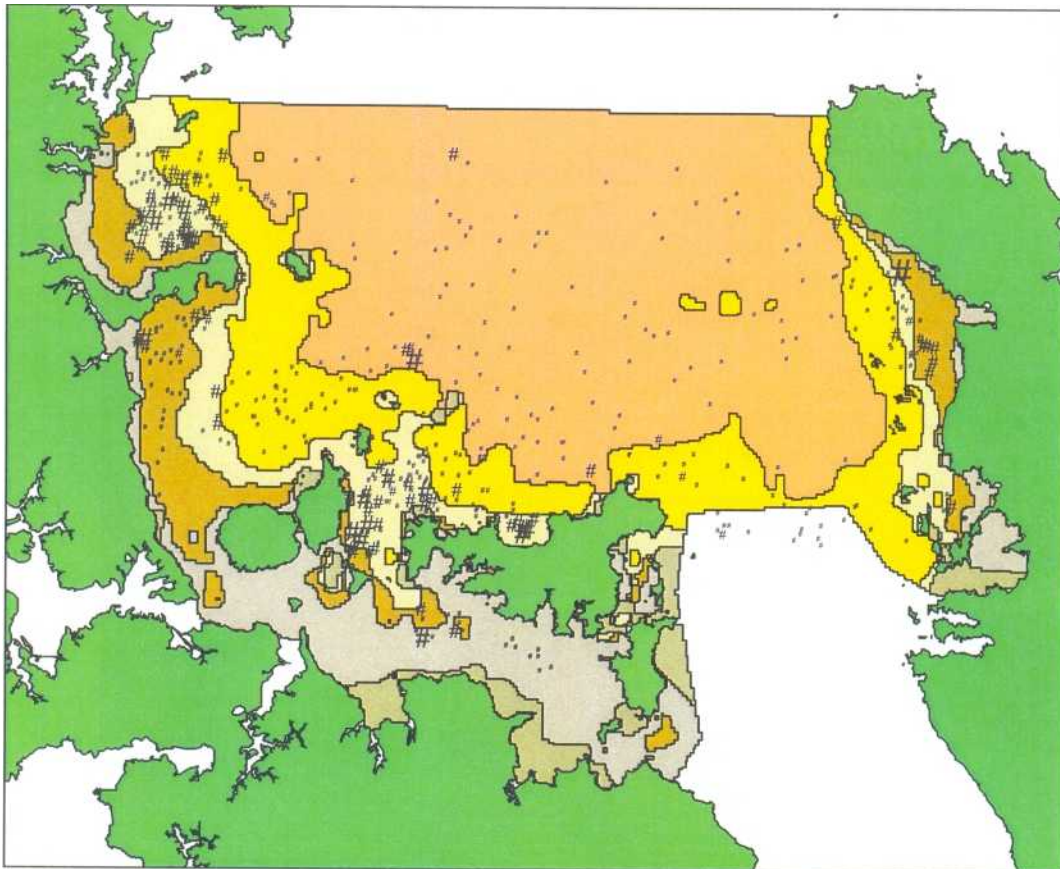


Figure 12: Trevally trawl survey abundance, 1982 - 2000, overlaid on acoustic class background.

Fish per km2	
·	0
#	1 - 99
#	100 - 199
#	200 - 499
#	500 - 999
#	> 1 000

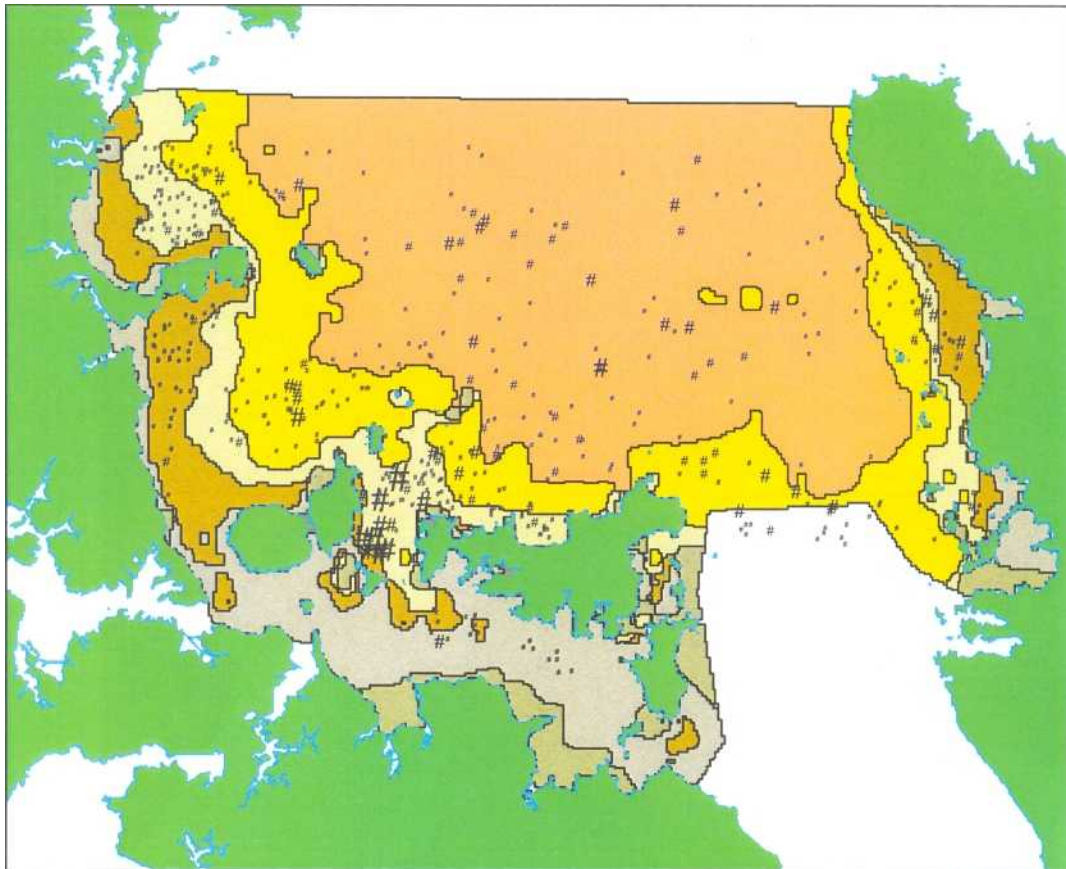


Figure 13: Rig trawl survey abundance, 1982 - 2000, overlaid on acoustic class background.

Fish per km2	
.	0
#	1 - 19
#	20 - 49
#	50 - 99
#	100 - 199
#	> 200

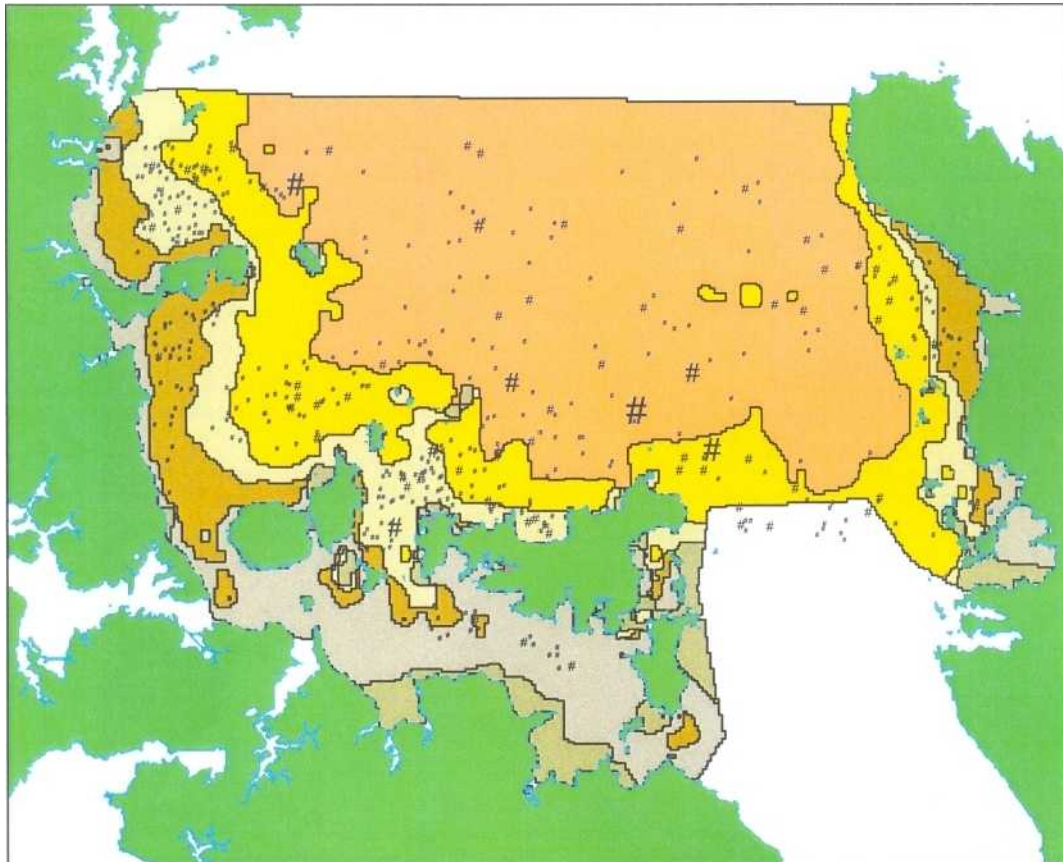


Figure 14: Barracouta trawl survey abundance, 1982 - 2000, overlaid on acoustic class background.

Fish per km2	
·	0
#	1 - 199
#	200 - 499
#	500 - 999
#	1 000 - 4 999
#	> 5 000

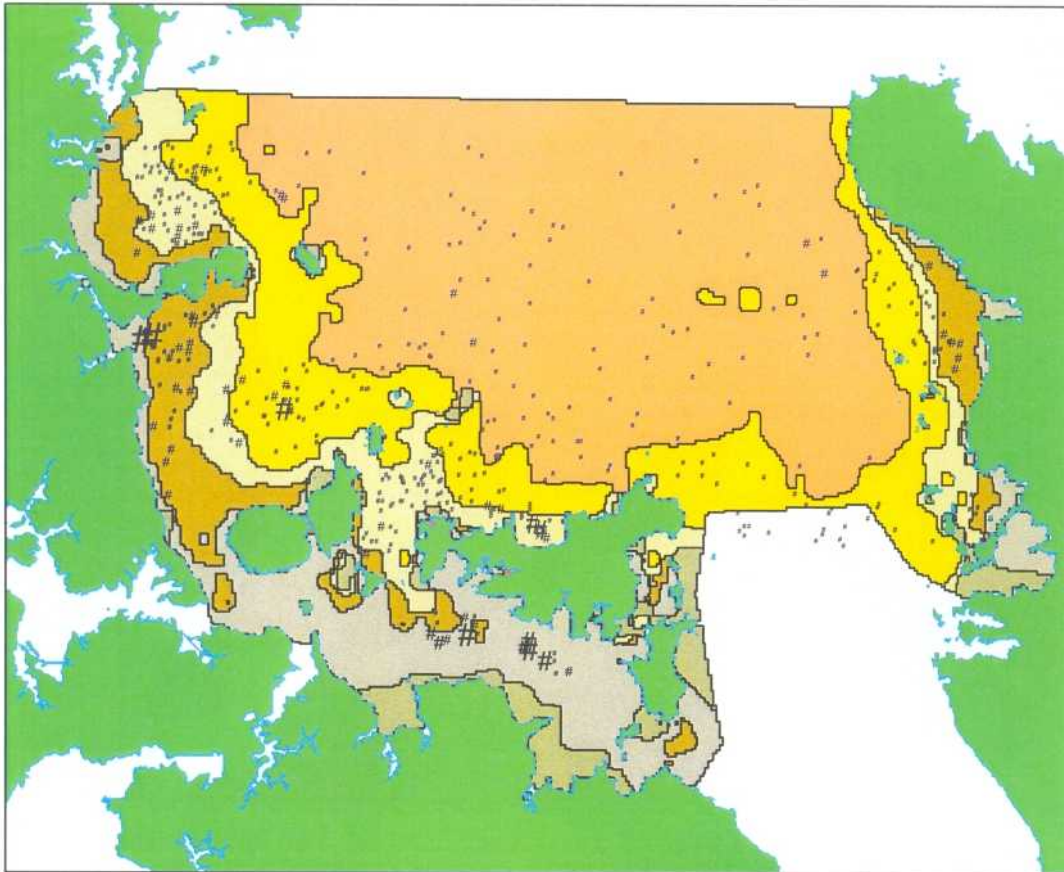


Figure 15: Kahawai trawl survey abundance, 1982 - 2000, overlaid on acoustic class background.

Fish per km2	
·	0
#	1 - 99
#	100 - 199
#	200 - 499
#	500 - 999
#	> 1 000

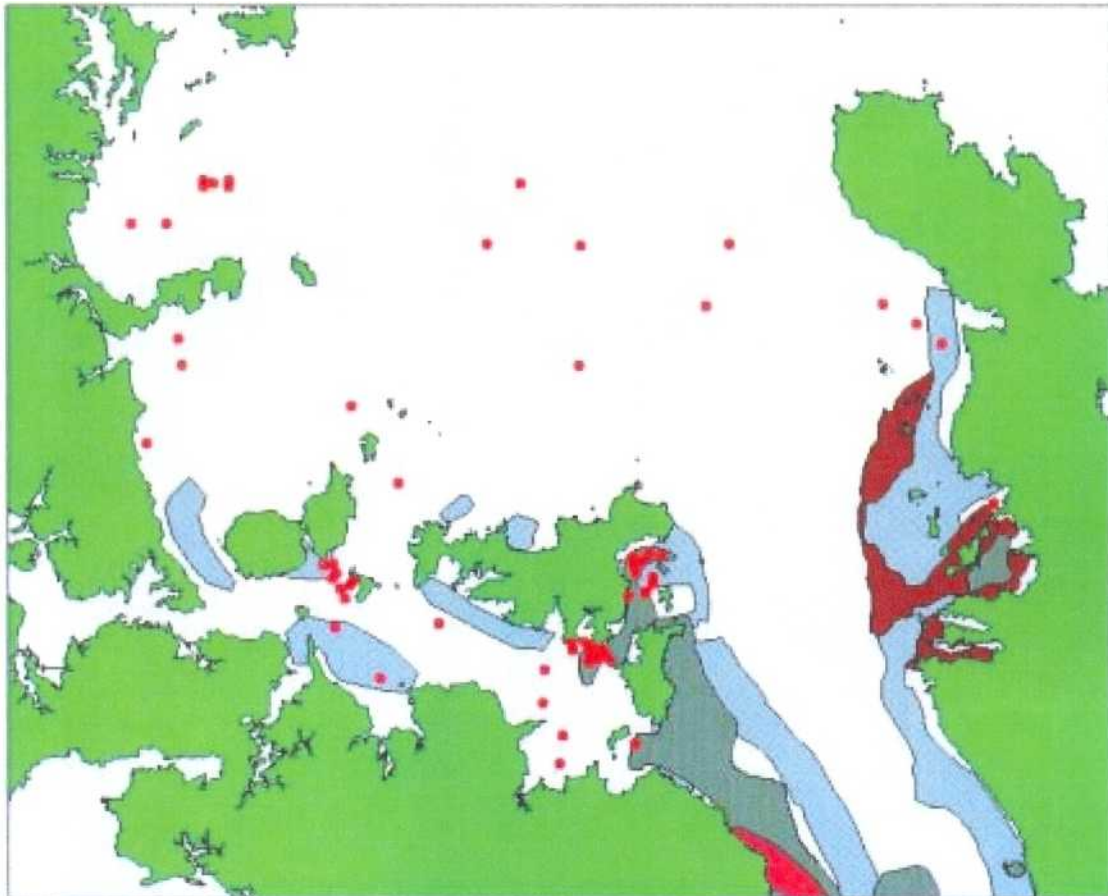


Figure 16: Historically abundant areas of green-lipped mussels. Two families dominated the mussel fishery. Mismatch of mussels and coastline in northeast is due to inaccuracies in the original map. Red dots denote ground truth stations.

