

INT2019-04 Identification and storage of cold-water coral bycatch specimens

1 July 2019 – 31 December 2019

Milestone 1. Six monthly progress update



Prepared for: Conservation Services Programme, Department of Conservation
Attention: Shannon Weaver
Report date: August 2020
Prepared by: Diana Macpherson, Di Tracey, Sadie Mills (NIWA)
Project: DOC20303 - INT2019-04

For any information regarding this report please contact:

Di Tracey
Scientist
Deepsea Ecology and Fisheries Group
+64-4-386 866
di.tracey@niwa.co.nz
National Institute of Water & Atmospheric Research Ltd
Private Bag 14901
Kilbirnie
Wellington 6241

Cover image: At-sea digital image of Placogorgia (Plexauridae; gorgonian octocoral sea fan) collected from TRIP5841 by bottom longline [Observer, FNZ].

Report reference:

Macpherson, D., Tracey, D., Mills, S. (2020). INT2019-04 Identification and storage of cold-water coral bycatch specimens 1 July 2019 – 31 December 2019. Milestone 1. Six monthly progress update prepared by NIWA for the Conservation Services Programme, Department of Conservation. DOC20303 - INT2019-04. 22 p.

DRAFT

Executive summary

Many protected coral species occur as bycatch in commercial fisheries around New Zealand. The Conservation Services Programme of the Department of Conservation recognise that Government Fisheries Observers on commercial fishing vessels are not always able to identify this bycatch at sea with high precision (especially to species level), with the confirmation of species requiring identification from a coral taxonomist in many cases.

This report summarises the sample and image identifications of all observed coral bycatch that occurred during the period 1 July 2019 to 31 December 2019. A total of 15 specimen samples were collected and returned for identification during the reporting period. Sub-samples from each live specimen were taken for future genetic studies. Additionally, there were 41 historical samples with revised higher-level identifications made during the reporting period, and these are also reported on.

A total of 145 specimens were identified by digital images during the reporting period; 139 were protected coral taxa, and 122 of these were able to be georeferenced. Additionally, nine specimens were identified by digital images received in April 2017 (for the reporting period 1 July 2016 to 30 June 2017). These historical specimens belonged to the black coral taxa, and five of these were able to be georeferenced.

Data are presented by Fisheries Management Areas (FMA), fishing method, and targeted fishery. Highest protected coral specimen counts came from the Southern Offshore Islands and Sub-Antarctic (FMA6) regions, as well as from two northern FMA's. Most were taken by bottom trawl operations throughout the regions targeting deepsea species orange roughy and smooth oreo.

Background

The specific objectives for this project are:

1. To determine, through examination of returned protected cold-water coral specimens and images, the taxon, and where possible the provenance of cold-water corals killed in New Zealand fisheries (for returned dead specimens).
2. To collect sub-samples of all protected cold-water coral specimens for genetic analysis in future.
3. To assist with observer training and the development/improvement of observer training resources.

There are several milestones for this project, here we report on Milestone 1. Six monthly progress update with a "Summary of coral specimens identified by samples and images, bycaught during the period 1 July 2019 – 31 December 2019."

This progress update presents:

1. A summary description of protected coral fauna recently identified from physical specimens and images.
2. Appendix A: Summary output from NIWA Invertebrate Collection (NIC) *Specify* Database *niwainvert*; (a) updated with revised identifications of 17 bycatch specimens (in 15 sample lots) collected between 1 July 2019 to 31 December 2019, and (b) historical bycatch specimens identified from 1 July 2019 to 31 December 2019.

3. Appendix B: (a) Spreadsheet summary of digital images processed and identified for the reporting period 1 July 2019 to 31 December 2019, and (b) Spreadsheet summary of specimens identified from images received in April 2017.

Description of protected coral fauna

Physical specimens

During the reporting period 1 July 2019 to 31 December 2019, NIWA received and processed 17 observer collected protected coral specimens in 15 sample lots, which were identified during this reporting period. All physical specimens returned to NIWA were collected by bottom trawl, with 14 specimens from fisheries targeting orange roughy and three specimens from fisheries targeting smooth oreo. Sub-samples from each live specimen were taken for future genetic studies.

A summary of bycatch specimens collected between 1 July 2019 to 31 December 2019 and identified by experts are provided in the NIWA Invertebrate Collection (NIC) *Specify* Database *niwainvert* extract (Appendix A, part (a)) and presented in Table 1. A summary of 41 historical bycatch specimens identified by experts between 1 July 2019 to 31 December 2019 is also provided (Appendix A, part (b)).

Table 1. Summary of protected coral species with a count of number of specimens collected from each Fisheries Management Area (FMA) and target fishery collected 1 July–31 December 2019. Refer to Fig. 2 for FMA location. ORH = orange roughy, SSO = smooth oreo.

Order	Family	Genus	Species	FMA (target fishery)					Total no. of specimens
				AKW (ORH)	CEE (ORH)	SOE (ORH)	SOE (SSO)	SUB (SSO)	
Alcyonacea	Acanthogorgiidae	<i>Acanthogorgia</i>					1		1
		<i>Isidella</i>		1					1
		<i>Keratoisis</i>		3					3
	Paragorgiidae	<i>Paragorgia</i>				1		1	
	Primnoidae	<i>Calyptrophora</i>				1		1	
Antipatharia	Schizopathidae	<i>Bathypathes</i>	<i>patula</i>			1			1
		<i>Parantipathes</i>				1		1	
	Stylopathidae	<i>Triadopathes</i>				1		1	
Scleractinia	Caryophylliidae	<i>Desmophyllum</i>	<i>dianthus</i>	3					3
		<i>Solenosmilia</i>	<i>variabilis</i>		1		1	2	4
Total no. of specimens				7	2	5	1	2	17

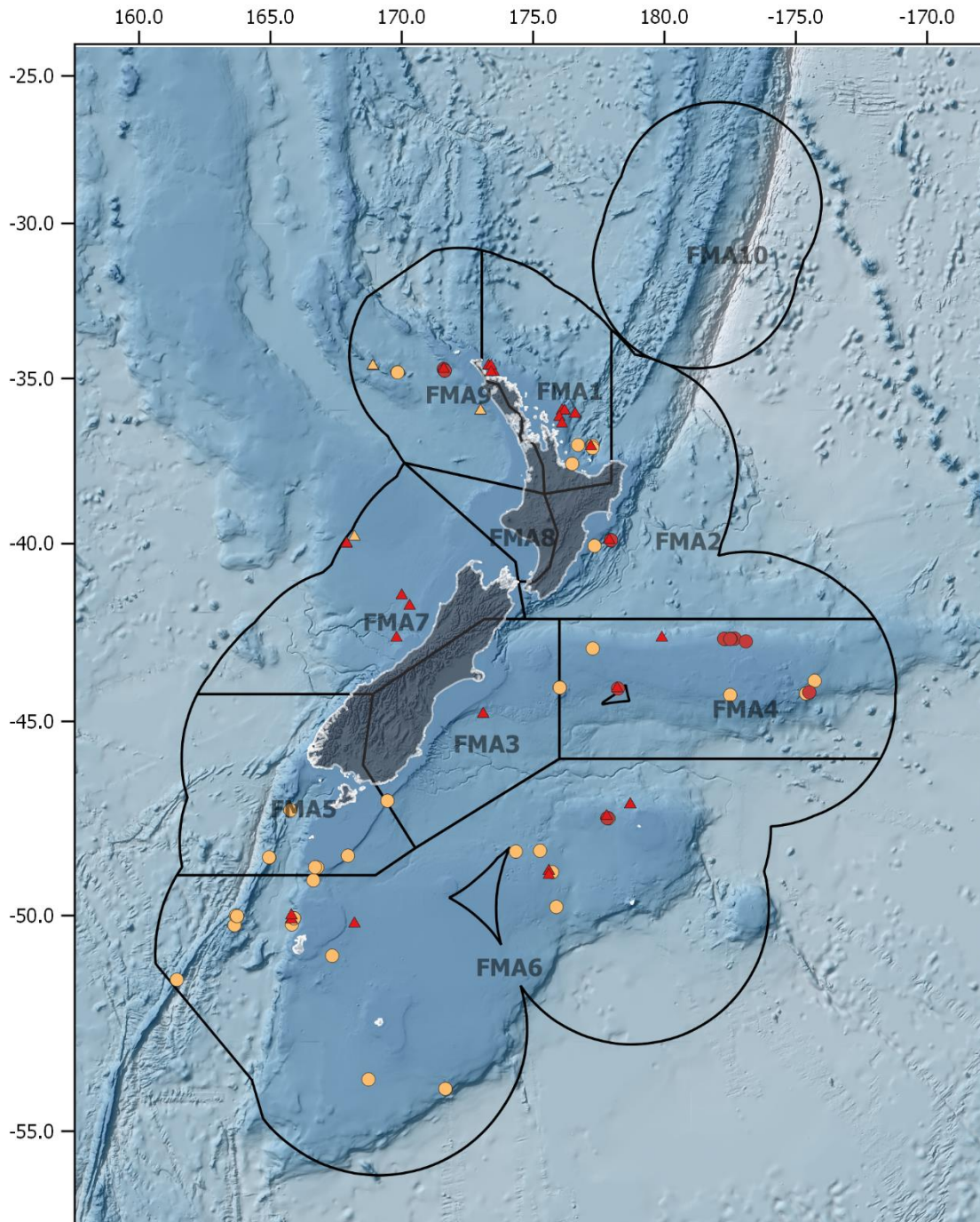


Figure 1. Bycatch coral specimens (red circles) and specimens from images (red triangles) collected 1 July–31 December 2019, and historical coral specimens identified between 1 July–31 December 2019 (orange circles) and historical specimens from images received in April 2017 (orange triangles). Data are plotted by Fisheries Management Area’s (FMA) 1-10. See Figure 2 for corresponding Observer FMA codes.

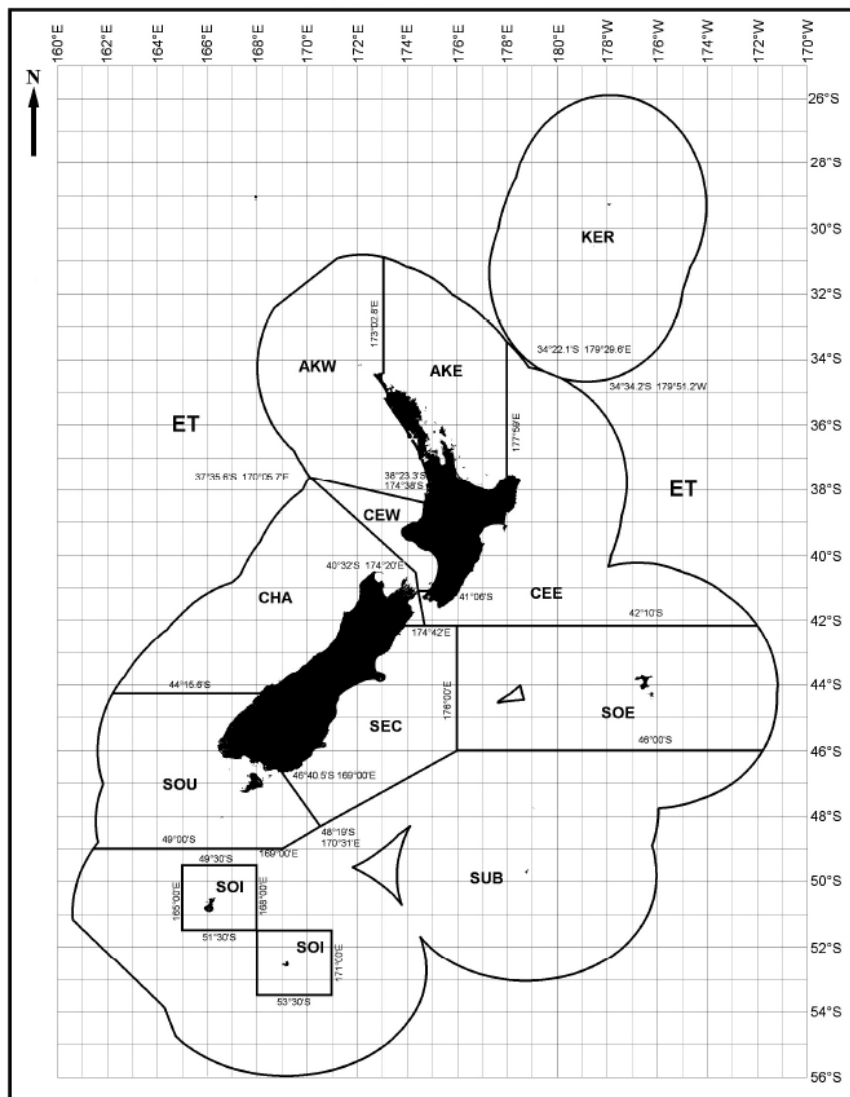


Figure 2. Observer Fisheries Management Area (FMA) codes. Taken from the FNZ Observer Manual.

Specimen Images

During the reporting period 1 July 2019 to 31 December 2019, NIWA received 408 digital images and 163 of these were processed. The remaining 245 were not processed either because they were not of protected coral taxa, or as they were of coral bycatch taken outside of New Zealand’s Exclusive Economic Zone (EEZ). This project does not report on High Seas protected coral bycatch.

In total, 145 specimens were identified from the 163 processed images (noting that at times there were multiple images of the same specimen). Of the 145 identified specimens, 139 were protected coral taxa, and 122 of these were able to be georeferenced. All processed images presented here were photographed within New Zealand’s EEZ. There were 17 protected coral specimens unable to be georeferenced due to either missing station number or incomplete FNZ photographic logs and ‘Benthic Materials’ form data, or data entered on new bottom longline forms which are not yet available from *COD*. The remaining six specimens were determined to be non-protected taxa: rocks

with hydroids, bryozoans and soft corals growing on them, and a large *Antipathella* black coral encrusted with jewel anemones and snake stars (Appendix B, part (a), also see Figure 3).



Figure 3. Large black coral *Antipathella* (top left and bottom right) encrusted with a species of *Corynactis* (jewel anemone, top right) and *Astrobrachion constrictum* (snake stars, bottom left) [Observer, FNZ]. These specimens were returned (NIWA 131888 – 131890).

Only 113 of the 163 processed images contained a FNZ label providing trip and tow number information. Tow numbers for a further 37 images were able to be determined by either:

- using *COD* database and the image timestamp to cross check the trip tow start and tow end date and time details already entered in *COD*, in the FNZ photographic logs, and on the 'Benthic Materials' form, or
- by cross checking the images with specimen records already entered in the *Specify* database - as some specimens that had been photographed were also sent to NIWA by the Observer and they had a label indicating the tow number.

Data summaries for the specimens identified from images are provided below and include a count by Observer Fisheries Management Areas (FMA) (Table 2, Figure 1), a count of tows and specimens by fishing method and target fishery (Table 3). Table 4 provides a count of specimens identified by species.

Table 2. Summary of specimens by Fisheries Management Area (FMA).

Area	Description	Count of Specimens
AKE	Auckland East (FMA1)	18
AKW	Auckland West (FMA9)	18
CEE	Central East (FMA2)	2
CHA	Challenger (FMA7)	9
SEC	South-East Coast (FMA3)	2
SOE	South East (FMA4)	14
SOI	Southern Offshore Islands (SQU6T)	48
SUB	Sub-Antarctic (FMA6)	15
(null)	null	19
Total		145

Table 3. Count of tows and specimens by fishing method and target fishery. TWL = Trawl, BLL = Bottom longline.

Target Fishery (common name)	FNZ code	Fishing Method	Count of Tows	Count of specimens
Black oreo	BOE	TWL	2	5
Alfonsino & long-finned beryx	BYX	TWL	2	2
Cardinalfish	CDL	TWL	1	1
Hake	HAK	TWL	1	1
Hoki	HOK	TWL	3	3
Ling	LIN	TWL	1	1
Orange roughy	ORH	TWL	26	67
Snapper	SNA	BLL	1	1
Smooth oreo	SSO	TWL	5	33
Tarakihi	TAR	TWL	5	11
Trevally	TRE	TWL	1	1
(null)	(null)	(null)	13	19
Total			61	145

Table 4. Count of specimens identified of each species.

Phylum	Class	Order	Family	Genus	Species	Total no. of specimens
Bryozoa						1
Cnidaria	Anthozoa	Alcyonacea indet.				2
		Alcyonacea	Acanthogorgiidae	<i>Acanthogorgia</i>		1
				<i>Anthogorgia</i>		2
			Chrysogorgiidae	<i>Chrysogorgia</i>		2
			Coralliidae	<i>Corallium</i>		1
			Isididae indet.			6
			Isididae	<i>Acanella</i>		7
				<i>Keratoisis</i>		13
				<i>Lepidisis</i>		2
			Paragorgiidae	<i>Paragorgia</i>		4
			Plexauridae	<i>Astrogorgia</i>		1
				<i>Muriceides</i>		1
				<i>Placogorgia</i>		3
				<i>Swiftia</i>		1
			Primnoidae indet.			4
			Primnioidae	<i>Callogorgia</i>		1
				<i>Calyptrophora</i>		1
				<i>Metafannyella</i>	<i>moseleyi</i>	1
				<i>Parastenella</i>		1
				<i>Primnoa</i>		1
				<i>Thouarella</i>		9
				<i>Thouarella</i>	<i>hilgendorfi</i>	1
				<i>Thouarella</i>	<i>variabilis</i>	2
				<i>Tokoprymno</i>		3
		Antipatharia	Myriopathidae	<i>Antipathella</i>		2
			Schizopathidae	<i>Bathypathes</i>	<i>patula</i>	1
				<i>Dendrobathypathes</i>		1
				<i>Dendropathes</i>		1
				<i>Parantipathes</i>		2
				<i>Saropathes</i>		1
				<i>Tylopathes</i>		1
		Corallimorpharia	Stylopathidae	<i>Corynactis</i>		1
		Scleractinia	Corallimorphidae	<i>Caryophyllia</i>		2
			Caryophylliidae	<i>Caryophyllia</i>	<i>ambrosia</i>	1
				<i>Desmophyllum</i>	<i>dianthus</i>	4
				<i>Goniocorella</i>	<i>dumosa</i>	8
				<i>Solenosmilia</i>	<i>variabilis</i>	32
				<i>Stephanocyathus</i>	<i>platypus</i>	3
			Dendrophylliidae indet.			1
			Dendrophyllidae	<i>Enallopsammia</i>	<i>rostrata</i>	2
			Flabellidae	<i>Flabellum</i>		2
	Hydrozoa	Anthoathecata	Stylasteridae			2
			Errina			3
Echinodermata	Ophiuroidea	Euryalida	Euryalidae	<i>Astrobrachion</i>	<i>constrictum</i>	1
Rock						3

Overall a high number of specimen images were taken of coral bycatch from the Southern Offshore Islands and Sub-Antarctic (both FMA6) regions, as well as in the northern FMA's (FMA1 and 9). The highest number of tows with coral bycatch were recorded from bottom trawls targeting orange roughy and smooth oreo. Other fisheries with coral bycatch included vessels targeting black oreo, tarakihi, hoki, and alfonsino. Figure 4 shows bycatch of protected corals taken from the Southern Offshore Islands by bottom trawl.



Figure 4. Example of high coral catch rate and specimen count taken during a bottom trawl operation targeting orange roughy, from FMA6, Southern Offshore Islands. Species identified include bamboo coral colonies and live and dead branching stony coral matrix (*Solenosmilia variabilis*) [Observer, FNZ].

A summary of nine specimens identified by digital images received in April 2017 (for the reporting period 1 July 2016 to 30 June 2017) is also provided in Appendix B, part (b). All specimens were black coral taxa and five were able to be georeferenced. Four specimens were collected from Auckland West (FMA9) and one from Challenger (FMA7), all by bottom trawls targeting either orange roughy or alfonsino and long-finned beryx.

The effort of Observers working at-sea to collect specimens and or specimen images is mostly carried out to a very high standard. Identifications would be made easier however if observers returned either the whole specimen or a sub-sample of the specimen or coral colony, and if labelling protocols were routinely followed.

Acknowledgements

Our thanks to the FNZ observers for their efforts at sea and to the various coral experts who provided identifications for this reporting period. These included Rob Stewart and Peter Marriott (NIWA), Marcelo Kitahara (Universidade de São Paulo, Brazil), and Stephen Cairns (Smithsonian Institution, USA). We acknowledge the NIC team for providing on-going curatorial support for the specimens. Finally, our thanks to Aiden Liu (NIWA) for COD data extracts.

Appendices

Appendix A: Summary output from NIWA Invertebrate Collection (NIC) *Specify* Database *niwainvert*

(a) updated with revised identifications of 17 bycatch specimens (in 15 sample lots) collected between 1 July 2019 to 31 December 2019

NIWA Cat. No.	TRIP	Tow	OSD No.	Initial ID Code	Phylum	Class	Order	Family	Genus	Species	Determiner	Determined Date	Expert ID	Date	Latitude1	Longitude1	Depth 1	Depth 2	FMA	Gear	Target Species	Count
131932	5844	37	4808	GOC	Cnidaria	Anthozoa	Alcyonacea	Acanthogorgiidae	<i>Acanthogorgia</i>		Tracey, Di	07/07/2020	GOC	04/12/2019	-42.7	-177.3	1182	1182	SOE	TWL	ORH	1
131916	5854	24	4788	UNI	Cnidaria	Anthozoa	Scleractinia	Caryophylliidae	<i>Desmophyllum</i>	<i>dianthus</i>	Tracey, Di	07/07/2020	DDI	05/12/2019	-34.8	171.6	1050	1166	AKW	TWL	ORH	3
131918	5854	31	4790	COU	Cnidaria	Anthozoa	Scleractinia	Caryophylliidae	<i>Solenosmilia</i>	<i>variabilis</i>	Tracey, Di	07/07/2020	SVA	09/12/2019	-39.9	177.9	1168	1100	CEE	TWL	ORH	1
131939	5844	23	4811	SVA	Cnidaria	Anthozoa	Scleractinia	Caryophylliidae	<i>Solenosmilia</i>	<i>variabilis</i>	Tracey, Di	07/07/2020	SVA	30/11/2019	-44.1	178.2	975	1016	SOE	TWL	SSO	1
131936	5844	21	4814	SVA	Cnidaria	Anthozoa	Scleractinia	Caryophylliidae	<i>Solenosmilia</i>	<i>variabilis</i>	Tracey, Di	07/07/2020	SVA	29/11/2019	-47.6	177.8	873	960	SUB	TWL	SSO	1
131937	5844	21	4813	SVA	Cnidaria	Anthozoa	Scleractinia	Caryophylliidae	<i>Solenosmilia</i>	<i>variabilis</i>	Tracey, Di	07/07/2020	SVA	29/11/2019	-47.6	177.8	873	960	SUB	TWL	SSO	1
131903	5799	54	4761	BOO	Cnidaria	Anthozoa	Alcyonacea	Isididae	<i>Isidella</i>		Tracey, Di	07/07/2020	ISI	06/11/2019	-34.7	171.6	1059		AKW	TWL	ORH	1
131917	5854	24	4787	UNI	Cnidaria	Anthozoa	Alcyonacea	Isididae	<i>Keratoisis</i>		Tracey, Di	07/07/2020	BOO	05/12/2019	-34.8	171.6	1050	1166	AKW	TWL	ORH	1
131919	5854	24	4792	ISI	Cnidaria	Anthozoa	Alcyonacea	Isididae	<i>Keratoisis</i>		Tracey, Di	07/07/2020	BOO	05/12/2019	-34.8	171.6	1050	1166	AKW	TWL	ORH	1
131922	5854	24	4794	ISI	Cnidaria	Anthozoa	Alcyonacea	Isididae	<i>Keratoisis</i>		Tracey, Di	07/07/2020	BOO	05/12/2019	-34.8	171.6	1050	1166	AKW	TWL	ORH	1
131934	5844	136	4806	PAB	Cnidaria	Anthozoa	Alcyonacea	Paragorgiidae	<i>Paragorgia</i>		Tracey, Di	07/07/2020	PAB	25/12/2019	-42.7	-177.5	1210	1228	SOE	TWL	ORH	1
131940	5844	32	4810	COB	Cnidaria	Anthozoa	Alcyonacea	Primnoidae	<i>Calyptrophora</i>		Tracey, Di	07/07/2020	CTP	03/12/2019	-42.7	-177.7	1156	1165	SOE	TWL	ORH	1
131923	5854	31	4797	COU	Cnidaria	Anthozoa	Antipatharia	Schizopathidae	<i>Bathypathes</i>	<i>patula</i>	Stewart, Rob	14/07/2020	BTP	09/12/2019	-39.9	177.9	1168	1100	CEE	TWL	ORH	1
131933	5844	35	4807	DEN	Cnidaria	Anthozoa	Antipatharia	Schizopathidae	<i>Parantipathes</i>		Stewart, Rob	14/07/2020	PTP	04/12/2019	-42.7	-177.5	1178	1195	SOE	TWL	ORH	1
131607	5706	17	4380	ATP	Cnidaria	Anthozoa	Antipatharia	Stylopathidae	<i>Triadopathes</i>		Stewart, Rob	14/07/2020	TDP	19/07/2019	-42.8	-176.9	908	948	SOE	TWL	ORH	1

(b) historical bycatch specimens identified from 1 July 2019 to 31 December 2019

NIWA Cat. No.	TRIP	tow	OSD No.	Initial ID Code	Phylum	Class	Order	Family	Genus	Species	Determiner	Determined Date	Expert ID	Date	Latitude1	Longitude1	Depth 1	Depth 2	FMA	Gear	Count
104313	1227	52			Cnidaria	Anthozoa	Alcyonacea	Coralliidae			Marriott, Peter (Chazz)	20/11/2019	CLL	14/05/1999	-54.1	171.7	1315		SUB	Bottom longline	1
106598	4837	9	3688	SIA	Cnidaria	Anthozoa	Alcyonacea	Coralliidae			Marriott, Peter (Chazz)	20/11/2019	CLL	19/01/2017	-51.5	161.4	1375	1258	SUB	Bottom longline	1
129022	5438	97	4152	ISI	Cnidaria	Anthozoa	Alcyonacea	Isididae	<i>Keratoisis</i>		Tracey, Di	03/07/2019	BOO	05/10/2018	-47.6	177.9		951	SUB	Trawl, fish bottom	1
127359	1227	52			Cnidaria	Anthozoa	Alcyonacea	Primnoidae	<i>Callozostrom</i>	<i>carlottae</i>	Cairns, Stephen	07/08/2019	PRI	14/05/1999	-54.1	171.7	1315		SUB	Bottom longline	1
65928	2718	31	1081		Cnidaria	Anthozoa	Alcyonacea	Primnoidae	<i>Dasystenella</i>	<i>austasensis</i>	Cairns, Stephen	08/2019	PRI	14/11/2008	-49.8	175.9	855	1032	SUB	Trawl, fish bottom	1
47784	2253	23			Cnidaria	Anthozoa	Alcyonacea	Primnoidae	<i>Metafannyella</i>	<i>moseleyi</i>	Cairns, Stephen	07/2019	PRI	30/05/2006	-42.7	-177.7	1166	1092	SOE	Trawl, fish bottom	1
66110	2718	245	911		Cnidaria	Anthozoa	Alcyonacea	Primnoidae	<i>Thouarella</i>	<i>brevispinosa</i>	Cairns, Stephen	08/2019	THO	10/12/2008	-48.4	175.3	948	1026	SUB	Trawl, fish bottom	1
129090	5581	50	4256	HDR	Cnidaria	Hydrozoa	Anthoathecata	Stylasteridae	<i>Errina</i>	<i>bicolor</i>	Marriott, Peter (Chazz)	19/11/2019	ERR	02/03/2019	-48.8	166.8	166		SOU		1
129091	5581	45	4257	HDR	Cnidaria	Hydrozoa	Anthoathecata	Stylasteridae	<i>Errina</i>	<i>bicolor</i>	Marriott, Peter (Chazz)	20/11/2019	ERR	01/03/2019	-48.8	166.7	166	163	SOU	Trawl, fish bottom	1
125192	5287	13	3813	COU	Cnidaria	Hydrozoa	Anthoathecata	Stylasteridae	<i>Errina</i>	<i>chathamensis</i>	Marriott, Peter (Chazz)	20/11/2019	ERR	23/03/2018	-44.1	176.0	218		SOE	Trawl, fish bottom	3
104681	1579	57			Cnidaria	Anthozoa	Scleractinia	Caryophylliidae	<i>Desmophyllum</i>	<i>dianthus</i>	Tracey, Di	11/11/2019	DDI	13/11/2001	-49.1	166.6	591		SUB		1
129098	5544	6	4267	DDI	Cnidaria	Anthozoa	Scleractinia	Caryophylliidae	<i>Desmophyllum</i>	<i>dianthus</i>	Tracey, Di	15/10/2019	DDI	02/01/2019	-43.0	177.3	335	352	SOE	Trawl, fish bottom	2
131605	5615	4	4370	CAY	Cnidaria	Anthozoa	Scleractinia	Caryophylliidae	<i>Desmophyllum</i>	<i>dianthus</i>	Tracey, Di	18/11/2019	DDI	02/04/2019	-47.1	169.5	126	285	SEC	Trawl, fish bottom	1
89158	1282	23			Cnidaria	Anthozoa	Scleractinia	Caryophylliidae	<i>Goniocorella</i>	<i>dumosa</i>	Tracey, Di	11/11/2019	GDU	01/11/1999	-40.1	177.3	399		CEE	Trawl, fish bottom	1
131606	5615	4	4369	GDU	Cnidaria	Anthozoa	Scleractinia	Caryophylliidae	<i>Goniocorella</i>	<i>dumosa</i>	Tracey, Di	18/11/2019	GDU	02/04/2019	-47.1	169.5	126	285	SEC	Trawl, fish bottom	1
89095	1171	57			Cnidaria	Anthozoa	Scleractinia	Caryophylliidae	<i>Solenosmilia</i>	<i>variabilis</i>	Tracey, Di	11/11/2019	SVA	02/12/1998	-50.2	163.6	1006		SUB	Trawl, fish bottom	1
89098	1731	20			Cnidaria	Anthozoa	Scleractinia	Caryophylliidae	<i>Solenosmilia</i>	<i>variabilis</i>	Tracey, Di	11/11/2019	SVA	20/01/2003	-43.9	-174.3	1005	1191	SOE	Trawl, fish bottom	1
89116	1171	38			Cnidaria	Anthozoa	Scleractinia	Caryophylliidae	<i>Solenosmilia</i>	<i>variabilis</i>	Kitahara, Marcelo	15/10/2019	SVA	29/11/1998	-48.6	165.0	1061		SOU	Trawl, fish bottom	1
89128	1390	8			Cnidaria	Anthozoa	Scleractinia	Caryophylliidae	<i>Solenosmilia</i>	<i>variabilis</i>	Tracey, Di	11/11/2019	SVA		-47.3	165.8			SOU		1
89159	1577	175			Cnidaria	Anthozoa	Scleractinia	Caryophylliidae	<i>Solenosmilia</i>	<i>variabilis</i>	Tracey, Di	11/11/2019	SVA	23/11/2001	-50.0	163.7			SUB		1
89160	1577	167			Cnidaria	Anthozoa	Scleractinia	Caryophylliidae	<i>Solenosmilia</i>	<i>variabilis</i>	Tracey, Di	11/11/2019	SVA	22/11/2001	-50.0	163.7	911	1038	SUB		1
145037	1643	18			Cnidaria	Anthozoa	Scleractinia	Caryophylliidae	<i>Solenosmilia</i>	<i>variabilis</i>	Tracey, Di	19/11/2019	SVA	24/04/2002	-44.2	-174.6	985	1060	SOE		1
89170	1337	16			Cnidaria	Anthozoa	Scleractinia	Dendrophylliidae	<i>Enallopsammia</i>	<i>rostrata</i>	Tracey, Di	06/11/2019	ERO	28/03/2000	-37.1	177.3	733		AKE		1
89224	1153	87			Cnidaria	Anthozoa	Scleractinia	Dendrophylliidae	<i>Enallopsammia</i>	<i>rostrata</i>	Tracey, Di	06/11/2019	ERO	19/09/1998	-50.1	165.9	989		SUB/SOI	Trawl, fish bottom	1
89225	1242	18			Cnidaria	Anthozoa	Scleractinia	Dendrophylliidae	<i>Enallopsammia</i>	<i>rostrata</i>	Tracey, Di	06/11/2019	ERO	25/06/1999	-37.1	176.7	927		AKE	Trawl, fish bottom	1
89226	1337	20			Cnidaria	Anthozoa	Scleractinia	Dendrophylliidae	<i>Enallopsammia</i>	<i>rostrata</i>	Tracey, Di	06/11/2019	ERO	30/03/2000	-37.1	177.3	730		AKE		1
89227	1153	83			Cnidaria	Anthozoa	Scleractinia	Dendrophylliidae	<i>Enallopsammia</i>	<i>rostrata</i>	Tracey, Di	06/11/2019	ERO	19/09/1998	-50.2	165.8	984		SUB/SOI		1
89229	1693	14			Cnidaria	Anthozoa	Scleractinia	Dendrophylliidae	<i>Enallopsammia</i>	<i>rostrata</i>	Tracey, Di	06/11/2019	ERO	11/10/2002	-48.4	174.3	872	920	SUB	Trawl, fish bottom	1
89232	1227	52			Cnidaria	Anthozoa	Scleractinia	Dendrophylliidae	<i>Enallopsammia</i>	<i>rostrata</i>	Tracey, Di	06/11/2019	ERO	14/05/1999	-54.1	171.7	1315		SUB	Bottom longline	1
89235	1171	46			Cnidaria	Anthozoa	Scleractinia	Dendrophylliidae	<i>Enallopsammia</i>	<i>rostrata</i>	Tracey, Di	06/11/2019	ERO	30/11/1998	-48.6	165.0	940	1180	SOU	Trawl, fish bottom	1

NIWA Cat. No.	TRIP	tow	OSD No.	Initial ID Code	Phylum	Class	Order	Family	Genus	Species	Determiner	Determined Date	Expert ID	Date	Latitude1	Longitude1	Depth 1	Depth 2	FMA	Gear	Count
89238	1153	87			Cnidaria	Anthozoa	Scleractinia	Dendrophylliidae	<i>Enallopsammia</i>	<i>rostrata</i>	Tracey, Di	06/11/2019	ERO	19/09/1998	-50.1	165.9	989		SUB/SOI	Trawl, fish bottom	1
89239	1573	91			Cnidaria	Anthozoa	Scleractinia	Dendrophylliidae	<i>Enallopsammia</i>	<i>rostrata</i>	Tracey, Di	06/11/2019	ERO	25/10/2001	-53.9	168.7	795		SUB		1
104345	1643	18			Cnidaria	Anthozoa	Scleractinia	Dendrophylliidae	<i>Enallopsammia</i>	<i>rostrata</i>	Tracey, Di	11/11/2019	ERO	24/04/2002	-44.2	-174.6	985	1060	SOE		1
129020	5473	2	4150	COF	Cnidaria	Anthozoa	Scleractinia	Flabellidae	<i>Flabellum</i>	<i>knoxii</i>	Tracey, Di	17/10/2019	COF	03/10/2018	-37.6	176.5			AKE	Bottom longline	1
129059	5503	90	4202	COF	Cnidaria	Anthozoa	Scleractinia	Flabellidae	<i>Flabellum</i>	<i>knoxii</i>	Tracey, Di	15/10/2019	COF	07/12/2018	-44.3	-177.5		515	SOE	Trawl, fish bottom	2
131514	5425	33	4271	COF	Cnidaria	Anthozoa	Scleractinia	Flabellidae	<i>Flabellum</i>	<i>knoxii</i>	Tracey, Di	17/10/2019	COF	30/08/2018	-51.0	167.4	495	500	SUB	Trawl, fish bottom	1
67808	2324	18			Cnidaria	Anthozoa	Scleractinia	Oculinidae	<i>Madrepora</i>	<i>oculata</i>	Kitahara, Marcelo	15/10/2019	MOC	14/11/2006	-48.9	175.7	953	1020	SUB	Trawl, fish bottom	1
103639	1355	2			Cnidaria	Anthozoa	Scleractinia	Oculinidae	<i>Madrepora</i>	<i>oculata</i>	Tracey, Di	15/10/2019	MOC	01/05/2000	-34.8	169.8	770		AKW	Trawl, fish bottom	1
104314	1624	43			Cnidaria	Anthozoa	Scleractinia	Oculinidae	<i>Madrepora</i>	<i>oculata</i>	Tracey, Di	11/11/2019	MOC	24/03/2002	-34.8	169.8	650	1187	AKW		1
129023	5438	97	4153	SIA	Cnidaria	Anthozoa	Scleractinia	Oculinidae	<i>Madrepora</i>	<i>oculata</i>	Tracey, Di	15/10/2019	MOC	05/10/2018	-47.6	177.9		951	SUB	Trawl, fish bottom	1
145036	1643	18			Cnidaria	Anthozoa	Scleractinia	Oculinidae	<i>Madrepora</i>	<i>oculata</i>	Tracey, Di	11/11/2019	MOC	24/04/2002	-44.2	-174.6	985	1060	SOE		1

DRAFT

Appendix B: (a) Spreadsheet summary of digital images processed and identified for the reporting period 1 July 2019 to 31 December 2019

Reporting Year (Period)	Images received	trip_number	station_number	Filename	fishing_method	target_species	start_obs_fma	trunc_start_latitude	trunc_start_longitude	start_seabed_depth	end_seabed_depth	Image Rating	Phylum	Class	Order	Family	Genus	Species	Determiner	Determined Date	NIWA Cat. No.	OSD No.	Initial OBS ID	Specimen count	Expert ID	
4 (Jul 2019 - Dec 2019)	Jun-20	5679	32	TRIP5679_032_Stephanocyathus-platypus	TWL	HOK	CHA	-42.7	169.8	717	702	3	Cnidaria	Anthozoa	Scleractinia	Caryophylliidae	<i>Stephanocyathus</i>	<i>platypus</i>	Di Tracey	7/07/2020				1	STP	
4 (Jul 2019 - Dec 2019)	Jun-20	5679	38	TRIP5679_038_Caryophyllia-ambrosia_a	TWL	HAK	CHA	-41.8	170.3	641	638	3	Cnidaria	Anthozoa	Scleractinia	Caryophylliidae	<i>Caryophyllia</i>	<i>ambrosia</i>	Di Tracey	7/07/2020				1	CAY	
4 (Jul 2019 - Dec 2019)	Jun-20	5679	38	TRIP5679_038_Caryophyllia-ambrosia_b	TWL	HAK	CHA	-41.8	170.3	641	638	3	Cnidaria	Anthozoa	Scleractinia	Caryophylliidae	<i>Caryophyllia</i>	<i>ambrosia</i>	Di Tracey	7/07/2020				0	CAY	
4 (Jul 2019 - Dec 2019)	Jun-20	5706	12	TRIP5706_012_Thouarella	TWL	ORH	SOE	-42.7	182.6	930	(null)	3	Cnidaria	Anthozoa	Alcyonacea	Primnoidae	<i>Thouarella</i>		Di Tracey	7/07/2020			GOC	1	THO	
4 (Jul 2019 - Dec 2019)	Jun-20	5706	17	TRIP5706_017_Stephanocyathus-platypus	TWL	ORH	SOE	-42.8	183.1	908	948	3	Cnidaria	Anthozoa	Scleractinia	Caryophylliidae	<i>Stephanocyathus</i>	<i>platypus</i>	Di Tracey	7/07/2020				STP	2	STP
4 (Jul 2019 - Dec 2019)	Jun-20	5706	17	TRIP5706_017_Tylopathes_NIWA1316_07_a	TWL	ORH	SOE	-42.8	183.1	908	948	3	Cnidaria	Anthozoa	Antipatharia	Stylopathidae	<i>Tylopathes</i>		Dennis Opresko	16/07/2020	NIWA 131607	4380		1	COB	
4 (Jul 2019 - Dec 2019)	Jun-20	5706	17	TRIP5706_017_Tylopathes_NIWA1316_07_b	TWL	ORH	SOE	-42.8	183.1	908	948	3	Cnidaria	Anthozoa	Antipatharia	Stylopathidae	<i>Tylopathes</i>		Dennis Opresko	16/07/2020	NIWA 131607	4380		0	COB	
4 (Jul 2019 - Dec 2019)	Jun-20	5706	37	TRIP5706_037_Parantipathes_a	TWL	ORH	SOE	-42.7	179.9	813	1129	3	Cnidaria	Anthozoa	Antipatharia	Schizopathidae	<i>Parantipathes</i>		Rob Stewart	14/07/2020				1	PTP	
4 (Jul 2019 - Dec 2019)	Jun-20	5706	37	TRIP5706_037_Parantipathes_b	TWL	ORH	SOE	-42.7	179.9	813	1129	3	Cnidaria	Anthozoa	Antipatharia	Schizopathidae	<i>Parantipathes</i>		Rob Stewart	14/07/2020				0	PTP	
4 (Jul 2019 - Dec 2019)	Jun-20	5706	40	TRIP5706_040_Metafannyella-moseleyi_a	TWL	ORH	SOE	-42.8	182.9	(null)	902	3	Cnidaria	Anthozoa	Alcyonacea	Primnoidae	<i>Metafannyella</i>	<i>moseleyi</i>	Stephen Cairns	12/07/2020			GOC	1	PRI	
4 (Jul 2019 - Dec 2019)	Jun-20	5706	40	TRIP5706_040_Metafannyella-moseleyi_b	TWL	ORH	SOE	-42.8	182.9	(null)	902	3	Cnidaria	Anthozoa	Alcyonacea	Primnoidae	<i>Metafannyella</i>	<i>moseleyi</i>	Stephen Cairns	12/07/2020			GOC	0	PRI	
4 (Jul 2019 - Dec 2019)	Jun-20	5706	50	TRIP5706_050_Muriceides_b	TWL	ORH	AKE	-37.1	177.2	714	888	3	Cnidaria	Anthozoa	Alcyonacea	Plexauridae	<i>Muriceides</i>		Jaret Bilewitsch	10/07/2020				0	PLE	
4 (Jul 2019 - Dec 2019)	Jun-20	5706	50	TRIP5706_050_Isididae	TWL	ORH	AKE	-37.1	177.2	714	888	3	Cnidaria	Anthozoa	Alcyonacea	Isididae			Di Tracey	7/07/2020				1	ISI	
4 (Jul 2019 - Dec 2019)	Jun-20	5706	50	TRIP5706_050_Muriceides_a	TWL	ORH	AKE	-37.1	177.2	714	888	3	Cnidaria	Anthozoa	Alcyonacea	Plexauridae	<i>Muriceides</i>		Jaret Bilewitsch	10/07/2020				1	PLE	
4 (Jul 2019 - Dec 2019)	Jun-20	5706	54	TRIP5706_054_Chrysogorgia_a	TWL	CDL	AKE	-36.1	176.6	860	860	3	Cnidaria	Anthozoa	Alcyonacea	Chrysogorgiidae	<i>Chrysogorgia</i>		Fredderic Siniger	7/07/2020				CHR	1	CHR
4 (Jul 2019 - Dec 2019)	Jun-20	5706	54	TRIP5706_054_Chrysogorgia_b	TWL	CDL	AKE	-36.1	176.6	860	860	3	Cnidaria	Anthozoa	Alcyonacea	Chrysogorgiidae	<i>Chrysogorgia</i>		Fredderic Siniger	7/07/2020				CHR	0	CHR
4 (Jul 2019 - Dec 2019)	Jun-20	5736	11	TRIP5736_011_Keratosis	TWL	ORH	AKW	-34.6	168.9	539	806	3	Cnidaria	Anthozoa	Alcyonacea	Isididae	<i>Keratosis</i>		Di Tracey	7/07/2020				1	BOO	
4 (Jul 2019 - Dec 2019)	Jun-20	5736	11	TRIP5736_011_Desmophyllum-dianthus	TWL	ORH	AKW	-34.6	168.9	539	806	3	Cnidaria	Anthozoa	Scleractinia	Caryophylliidae	<i>Desmophyllum</i>	<i>dianthus</i>	Di Tracey	7/07/2020				1	DDI	
4 (Jul 2019 - Dec 2019)	Jun-20	5736	11	TRIP5736_011_BOO_ERR	TWL	ORH	AKW	-34.6	168.9	539	806	3	Cnidaria	Anthozoa	Alcyonacea	Isididae	<i>Keratosis</i>		Di Tracey	7/07/2020				1	BOO	
4 (Jul 2019 - Dec 2019)	Jun-20	5736	11	TRIP5736_011_BOO_ERR	TWL	ORH	AKW	-34.6	168.9	539	806	3	Cnidaria	Hydrozoa	Anthoathecata	Stylasteridae	<i>Errina</i>		Peter Marriott	7/07/2020				1	ERR	
4 (Jul 2019 - Dec 2019)	Jun-20	5736	11	TRIP5736_011_Dendrobathypathes	TWL	ORH	AKW	-34.6	168.9	539	806	3	Cnidaria	Anthozoa	Antipatharia	Schizopathidae	<i>Dendrobathypathes</i>		Rob Stewart	14/07/2020				1	DEN	
4 (Jul 2019 - Dec 2019)	Jun-20	5736	11	TRIP5736_011_Thouarella	TWL	ORH	AKW	-34.6	168.9	539	806	3	Cnidaria	Anthozoa	Alcyonacea	Primnoidae	<i>Thouarella</i>		Di Tracey	7/07/2020				THO	1	THO

Reporting Year (Period)	Images received	trip_number	station_number	Filename	fishing_method	target_species	start_obs_fma	trunc_start_latitude	trunc_start_longitude	start_seabed_depth	end_seabed_depth	Image Rating	Phylum	Class	Order	Family	Genus	Species	Determiner	Determined Date	NIWA Cat. No.	OSD No.	Initial OBS ID	Specimen count	Expert ID
4 (Jul 2019 - Dec 2019)	Jun-20	5736	11	TRIP5736_011_Primnoidae	TWL	ORH	AKW	-34.6	168.9	539	806	3	Cnidaria	Anthozoa	Alcyonacea	Primnoidae			Stephen Cairns	12/07/2020				1	PRI
4 (Jul 2019 - Dec 2019)	Jun-20	5736	11	TRIP5736_011_Parastenella	TWL	ORH	AKW	-34.6	168.9	539	806	3	Cnidaria	Anthozoa	Alcyonacea	Primnoidae	<i>Parastenella</i>		Stephen Cairns	12/07/2020				1	PRI
4 (Jul 2019 - Dec 2019)	Jun-20	5736	13	TRIP5736_013_Acanella_a	TWL	ORH	AKW	-34.6	168.9	530	701	3	Cnidaria	Anthozoa	Alcyonacea	Isididae	<i>Acanella</i>		Di Tracey	7/07/2020			BOO	1	ACN
4 (Jul 2019 - Dec 2019)	Jun-20	5736	13	TRIP5736_013_Acanella_b	TWL	ORH	AKW	-34.6	168.9	530	701	3	Cnidaria	Anthozoa	Alcyonacea	Isididae	<i>Acanella</i>		Di Tracey	7/07/2020			BOO	1	ACN
4 (Jul 2019 - Dec 2019)	Jun-20	5736	13	TRIP5736_013_Acanella_c	TWL	ORH	AKW	-34.6	168.9	530	701	3	Cnidaria	Anthozoa	Alcyonacea	Isididae	<i>Acanella</i>		Di Tracey	7/07/2020			BOO	1	ACN
4 (Jul 2019 - Dec 2019)	Jun-20	5736	13	TRIP5736_013_Dendropathes_a	TWL	ORH	AKW	-34.6	168.9	530	701	3	Cnidaria	Anthozoa	Antipatharia	Schizopathidae	<i>Dendropathes</i>		Rob Stewart	14/07/2020			DEN	1	DDP
4 (Jul 2019 - Dec 2019)	Jun-20	5736	13	TRIP5736_013_Dendropathes_b	TWL	ORH	AKW	-34.6	168.9	530	701	3	Cnidaria	Anthozoa	Antipatharia	Schizopathidae	<i>Dendropathes</i>		Rob Stewart	14/07/2020			DEN	0	DDP
4 (Jul 2019 - Dec 2019)	Jun-20	5746	2	TRIP5746_002_Corallium	(null)	(null)	(null)	(null)	(null)	(null)	(null)	3	Cnidaria	Anthozoa	Alcyonacea	Coralliidae	<i>Corallium</i>		Peter Marriott	7/07/2020				1	CLL
4 (Jul 2019 - Dec 2019)	Jun-20	5746	2	TRIP5746_002_Keratoisis	(null)	(null)	(null)	(null)	(null)	(null)	(null)	3	Cnidaria	Anthozoa	Alcyonacea	Isididae	<i>Keratoisis</i>		Di Tracey	7/07/2020				1	BOO
4 (Jul 2019 - Dec 2019)	Jun-20	5764	33	TRIP5764_033_Paragorgia	TWL	SSO	SEC	-44.8	173.1	984	(null)	2	Cnidaria	Anthozoa	Alcyonacea	Paragorgiidae	<i>Paragorgia</i>		Di Tracey	7/07/2020				1	PAB
4 (Jul 2019 - Dec 2019)	Jun-20	5764	33	TRIP5764_033_Paragorgia_a	TWL	SSO	SEC	-44.8	173.1	984	(null)	3	Cnidaria	Anthozoa	Alcyonacea	Paragorgiidae	<i>Paragorgia</i>		Di Tracey	7/07/2020				1	PAB
4 (Jul 2019 - Dec 2019)	Jun-20	5764	33	TRIP5764_033_Paragorgia_b	TWL	SSO	SEC	-44.8	173.1	984	(null)	3	Cnidaria	Anthozoa	Alcyonacea	Paragorgiidae	<i>Paragorgia</i>		Di Tracey	7/07/2020				0	PAB
4 (Jul 2019 - Dec 2019)	Jun-20	5782	9	TRIP5782_009_Thouarella	TWL	TAR	AKE	-34.6	173.3	134	112	4	Cnidaria	Anthozoa	Alcyonacea	Primnoidae	<i>Thouarella</i>		Di Tracey	7/07/2020				1	THO
4 (Jul 2019 - Dec 2019)	Jun-20	5782	9	TRIP5782_009_Thouarella_Astrogorgia	TWL	TAR	AKE	-34.6	173.3	134	112	4	Cnidaria	Anthozoa	Alcyonacea	Primnoidae	<i>Thouarella</i>		Di Tracey	7/07/2020				1	THO
4 (Jul 2019 - Dec 2019)	Jun-20	5782	9	TRIP5782_009_Thouarella_Astrogorgia	TWL	TAR	AKE	-34.6	173.3	134	112	4	Cnidaria	Anthozoa	Alcyonacea	Plexauridae	<i>Astrogorgia</i>		Jaret Bilewitch	10/07/2020				1	PLE
4 (Jul 2019 - Dec 2019)	Jun-20	5782	19	TRIP5782_019_Primnoidae	TWL	TRE	AKE	-34.8	173.5	90	115	3	Cnidaria	Anthozoa	Alcyonacea	Primnoidae			Di Tracey	7/07/2020				1	PRI
4 (Jul 2019 - Dec 2019)	Jun-20	5782	21	TRIP5782_021_Flabellum	TWL	TAR	AKE	-34.6	173.4	200	79	4	Cnidaria	Anthozoa	Scleractinia	Flabellidae	<i>Flabellum</i>		Di Tracey	7/07/2020				1	COF
4 (Jul 2019 - Dec 2019)	Jun-20	5790	13	TRIP5790_013_Thouarella_a	TWL	ORH	CHA	-40	167.9	923	(null)	3	Cnidaria	Anthozoa	Alcyonacea	Primnoidae	<i>Thouarella</i>		Di Tracey	7/07/2020				2	THO
4 (Jul 2019 - Dec 2019)	Jun-20	5790	13	TRIP5790_013_Thouarella_b	TWL	ORH	CHA	-40	167.9	923	(null)	3	Cnidaria	Anthozoa	Alcyonacea	Primnoidae	<i>Thouarella</i>		Di Tracey	7/07/2020				0	THO
4 (Jul 2019 - Dec 2019)	Jun-20	5790	13	TRIP5790_013_Thouarella_c	TWL	ORH	CHA	-40	167.9	923	(null)	3	Cnidaria	Anthozoa	Alcyonacea	Primnoidae	<i>Thouarella</i>		Di Tracey	7/07/2020				0	THO
4 (Jul 2019 - Dec 2019)	Jun-20	5790	22	TRIP5790_022_Callogorgia_b	TWL	ORH	CHA	-40	167.9	904	(null)	3	Cnidaria	Anthozoa	Alcyonacea	Primnoidae	<i>Callogorgia</i>		Stephen Cairns	12/07/2020			CLG	0	CLG
4 (Jul 2019 - Dec 2019)	Jun-20	5790	22	TRIP5790_022_Callogorgia_a	TWL	ORH	CHA	-40	167.9	904	(null)	3	Cnidaria	Anthozoa	Alcyonacea	Primnoidae	<i>Callogorgia</i>		Stephen Cairns	12/07/2020			CLG	1	CLG
4 (Jul 2019 - Dec 2019)	Jun-20	5790	27	TRIP5790_027_Thouarella-hilgendorfi_a	TWL	ORH	CHA	-40	167.9	(null)	(null)	3	Cnidaria	Anthozoa	Alcyonacea	Primnoidae	<i>Thouarella</i>	<i>hilgendorfi</i>	Stephen Cairns	12/07/2020			THO	1	THO
4 (Jul 2019 - Dec 2019)	Jun-20	5790	27	TRIP5790_027_Thouarella-hilgendorfi_b	TWL	ORH	CHA	-40	167.9	(null)	(null)	3	Cnidaria	Anthozoa	Alcyonacea	Primnoidae	<i>Thouarella</i>	<i>hilgendorfi</i>	Stephen Cairns	12/07/2020			THO	0	THO

Reporting Year (Period)	Images received	trip_number	station_number	Filename	fishing_method	target_species	start_obs_fma	trunc_start_latitude	trunc_start_longitude	start_seabed_depth	end_seabed_depth	Image Rating	Phylum	Class	Order	Family	Genus	Species	Determiner	Determined Date	NIWA Cat. No.	OSD No.	Initial OBS ID	Specimen count	Expert ID
4 (Jul 2019 - Dec 2019)	Jun-20	5790	32	TRIP5790_032_Anthogorgia	TWL	ORH	CHA	-40	167.9	885	930	3	Cnidaria	Anthozoa	Alcyonacea	Acanthogorgiidae	<i>Anthogorgia</i>		Jaret Bilewitch	10/07/2020			GOC	1	GOC
4 (Jul 2019 - Dec 2019)	Jun-20	5790	38	TRIP5790_038_Thouarella	TWL	ORH	CHA	-40	167.9	892	942	2	Cnidaria	Anthozoa	Alcyonacea	Primnoidae	<i>Thouarella</i>		Di Tracey	7/07/2020				1	THO
4 (Jul 2019 - Dec 2019)	Jun-20	5798	10	TRIP5798_010_Goniocorella-dumosa	TWL	TAR	AKE	-36	176.1	234	(null)	2	Cnidaria	Anthozoa	Scleractinia	Caryophylliidae	<i>Goniocorella</i>	<i>dumosa</i>	Di Tracey	7/07/2020			SIA	5	GDU
4 (Jul 2019 - Dec 2019)	Jun-20	5790	42	TRIP5790_042_Lepidisis_a	TWL	ORH	CHA	-41.5	170	948	1010	3	Cnidaria	Anthozoa	Alcyonacea	Isididae	<i>Lepidisis</i>		Di Tracey	7/07/2020			LLE	1	LLE
4 (Jul 2019 - Dec 2019)	Jun-20	5790	42	TRIP5790_042_Lepidisis_b	TWL	ORH	CHA	-41.5	170	948	1010	3	Cnidaria	Anthozoa	Alcyonacea	Isididae	<i>Lepidisis</i>		Di Tracey	7/07/2020			LLE	0	LLE
4 (Jul 2019 - Dec 2019)	Jun-20	5798	25	TRIP5798_025_Goniocorella-dumosa	TWL	TAR	AKE	-36	176.1	205	245	2	Cnidaria	Anthozoa	Scleractinia	Caryophylliidae	<i>Goniocorella</i>	<i>dumosa</i>	Di Tracey	7/07/2020			SVA	1	GDU
4 (Jul 2019 - Dec 2019)	Jun-20	5798	31	TRIP5798_031_Dendrophylliidae_a	TWL	HOK	AKE	-36	176.2	385	446	2	Cnidaria	Anthozoa	Scleractinia	Dendrophylliidae			Marcelo Kitahara	10/07/2020			CBR	1	CBR
4 (Jul 2019 - Dec 2019)	Jun-20	5798	31	TRIP5798_031_Dendrophylliidae_b	TWL	HOK	AKE	-36	176.2	385	446	2	Cnidaria	Anthozoa	Scleractinia	Dendrophylliidae			Marcelo Kitahara	10/07/2020			CBR	0	CBR
4 (Jul 2019 - Dec 2019)	Jun-20	5790	(null)	TRIP5790_P1040192_a	(null)	(null)	(null)	(null)	(null)	(null)	(null)	3	Cnidaria	Anthozoa	Alcyonacea	Isididae	<i>Lepidisis</i>		Di Tracey	7/07/2020				1	LLE
4 (Jul 2019 - Dec 2019)	Jun-20	5790	(null)	TRIP5790_P1040193_b	(null)	(null)	(null)	(null)	(null)	(null)	(null)	4	Cnidaria	Anthozoa	Alcyonacea	Isididae	<i>Lepidisis</i>		Di Tracey	7/07/2020				0	LLE
4 (Jul 2019 - Dec 2019)	Jun-20	5798	46	TRIP5798_046_Saropathes	TWL	TAR	AKE	-36.2	176	251	254	2	Cnidaria	Anthozoa	Antipatharia	Schizopathidae	<i>Saropathes</i>		Dennis Opresko	16/07/2020			ATP	1	COB
4 (Jul 2019 - Dec 2019)	Jun-20	5798	48	TRIP5798_048_Flabellum	TWL	HOK	AKE	-36.4	176.1	394	388	2	Cnidaria	Anthozoa	Scleractinia	Flabellidae	<i>Flabellum</i>		Di Tracey	7/07/2020			COF	1	COF
4 (Jul 2019 - Dec 2019)	Jun-20	5797	36	TRIP5797_036_Errina_a	TWL	LIN	SUB	-50.2	168.2	541	541	3	Cnidaria	Hydrozoa	Anthoathecata	Stylasteridae	<i>Errina</i>		Peter Marriott	7/07/2020			COU	1	ERR
4 (Jul 2019 - Dec 2019)	Jun-20	5797	36	TRIP5797_036_Errina_b	TWL	LIN	SUB	-50.2	168.2	541	541	4	Cnidaria	Hydrozoa	Anthoathecata	Stylasteridae	<i>Errina</i>		Peter Marriott	7/07/2020			COU	0	ERR
4 (Jul 2019 - Dec 2019)	Jun-20	5827	18	TRIP5827_018_Keratosis_a	TWL	BYX	SOE	-43	182.5	380	(null)	3	Cnidaria	Anthozoa	Alcyonacea	Isididae	<i>Keratosis</i>		Di Tracey	7/07/2020				1	BOO
4 (Jul 2019 - Dec 2019)	Jun-20	5827	18	TRIP5827_018_Keratosis_b	TWL	BYX	SOE	-43	182.5	380	(null)	3	Cnidaria	Anthozoa	Alcyonacea	Isididae	<i>Keratosis</i>		Di Tracey	7/07/2020				0	BOO
4 (Jul 2019 - Dec 2019)	Jun-20	5799	54	TRIP5799_054_Acanella_NIWA131903	TWL	ORH	AKW	-34.7	171.6	1059	(null)	2	Cnidaria	Anthozoa	Alcyonacea	Isididae	<i>Acanella</i>		Di Tracey	7/07/2020	NIWA 131903	4761	BOO	1	ACN
4 (Jul 2019 - Dec 2019)	Jun-20	5799	55	TRIP5799_055_Acanella_NIWA131896	TWL	ORH	AKW	-34.7	171.6	1068	(null)	2	Cnidaria	Anthozoa	Alcyonacea	Isididae	<i>Acanella</i>		Di Tracey	7/07/2020	NIWA 131896	4760	ISI	2	ACN
4 (Jul 2019 - Dec 2019)	Jun-20	5827	27	TRIP5827_027_Anthogorgia_a	TWL	BYX	SOE	-43	182.1	348	(null)	3	Cnidaria	Anthozoa	Alcyonacea	Acanthogorgiidae	<i>Anthogorgia</i>		Jaret Bilewitch	10/07/2020				1	GOC
4 (Jul 2019 - Dec 2019)	Jun-20	5827	27	TRIP5827_027_Anthogorgia_b	TWL	BYX	SOE	-43	182.1	348	(null)	3	Cnidaria	Anthozoa	Alcyonacea	Acanthogorgiidae	<i>Anthogorgia</i>		Jaret Bilewitch	10/07/2020				0	GOC
4 (Jul 2019 - Dec 2019)	Jun-20	5810	12	TRIP5810_012_Antipathella_a	(null)	(null)	(null)	(null)	(null)	(null)	(null)	4	Cnidaria	Anthozoa	Antipatharia	Myriopathidae	<i>Antipathella</i>		Rob Stewart	14/07/2020				1	AHL
4 (Jul 2019 - Dec 2019)	Jun-20	5810	12	TRIP5810_012_Antipathella_b	(null)	(null)	(null)	(null)	(null)	(null)	(null)	4	Cnidaria	Anthozoa	Antipatharia	Myriopathidae	<i>Antipathella</i>		Rob Stewart	14/07/2020				0	AHL
4 (Jul 2019 - Dec 2019)	Jun-20	5834	5	TRIP5834_005_Enallopsammia-rostrata	BLL	SNA	AKE	-34.8	173.4	(null)	(null)	3	Cnidaria	Anthozoa	Scleractinia	Dendrophylliidae	<i>Enallopsammia</i>	<i>rostrata</i>	Di Tracey	7/07/2020				1	ERO
4 (Jul 2019 - Dec 2019)	Jun-20	5841	9	TRIP5841_009_Placogorgia_a	(null)	(null)	(null)	(null)	(null)	(null)	(null)	3	Cnidaria	Anthozoa	Alcyonacea	Plexauridae	<i>Placogorgia</i>		Jaret Bilewitch	10/07/2020				1	PLE

Reporting Year (Period)	Images received	trip_number	station_number	Filename	fishing_method	target_species	start_obs_fma	trunc_start_latitude	trunc_start_longitude	start_seabed_depth	end_seabed_depth	Image Rating	Phylum	Class	Order	Family	Genus	Species	Determiner	Determined Date	NIWA Cat. No.	OSD No.	Initial OBS ID	Specimen count	Expert ID
4 (Jul 2019 - Dec 2019)	Jun-20	5841	9	TRIP5841_009_Placogorgia_b	(null)	(null)	(null)	(null)	(null)	(null)	(null)	3	Cnidaria	Anthozoa	Alcyonacea	Plexauridae	<i>Placogorgia</i>		Jaret Bilewicz	10/07/2020				0	PLE
4 (Jul 2019 - Dec 2019)	Jun-20	5841	(null)	TRIP5841_Placogorgia	(null)	(null)	(null)	(null)	(null)	(null)	(null)	3	Cnidaria	Anthozoa	Alcyonacea	Plexauridae	<i>Placogorgia</i>		Jaret Bilewicz	10/07/2020				1	PLE
4 (Jul 2019 - Dec 2019)	Jun-20	5828	(null)	TRIP5828_Goniocorella-dumosa_1	(null)	(null)	(null)	(null)	(null)	(null)	(null)	3	Cnidaria	Anthozoa	Scleractinia	Caryophylliidae	<i>Goniocorella</i>	<i>dumosa</i>	Di Tracey	7/07/2020				1	GDU
4 (Jul 2019 - Dec 2019)	Jun-20	5828	(null)	TRIP5828_Goniocorella-dumosa_2	(null)	(null)	(null)	(null)	(null)	(null)	(null)	3	Cnidaria	Anthozoa	Scleractinia	Caryophylliidae	<i>Goniocorella</i>	<i>dumosa</i>	Di Tracey	7/07/2020				1	GDU
4 (Jul 2019 - Dec 2019)	Jun-20	5844	17	TRIP5844_017_ROK_a	TWL	BOE	SUB	-48.9	175.6	969	955	3							Di Tracey	7/07/2020				1	ROK
4 (Jul 2019 - Dec 2019)	Jun-20	5844	17	TRIP5844_017_ROK_b	TWL	BOE	SUB	-48.9	175.6	969	955	3							Di Tracey	7/07/2020				1	ROK
4 (Jul 2019 - Dec 2019)	Jun-20	5844	17	TRIP5844_017_Isididae	TWL	BOE	SUB	-48.9	175.6	969	955	3	Cnidaria	Anthozoa	Alcyonacea	Isididae			Di Tracey	7/07/2020				1	ISI
4 (Jul 2019 - Dec 2019)	Jun-20	5844	17	TRIP5844_017_Desmophyllum-dianthus	TWL	BOE	SUB	-48.9	175.6	969	955	3	Cnidaria	Anthozoa	Scleractinia	Caryophylliidae	<i>Desmophyllum</i>	<i>dianthus</i>	Di Tracey	7/07/2020				1	DDI
4 (Jul 2019 - Dec 2019)	Jun-20	5844	18	TRIP5844_018_ROK	TWL	BOE	SUB	-49	175.6	873	875	3							Di Tracey	7/07/2020				1	ROK
4 (Jul 2019 - Dec 2019)	Jun-20	5844	21	TRIP5844_021_Solenosmilia-variabilis_NIWA131936	TWL	SSO	SUB	-47.5	177.8	873	960	3	Cnidaria	Anthozoa	Scleractinia	Caryophylliidae	<i>Solenosmilia</i>	<i>variabilis</i>	Di Tracey	7/07/2020	NIWA 131936	4814	SVA	1	SVA
4 (Jul 2019 - Dec 2019)	Jun-20	5844	21	TRIP5844_021_Solenosmilia-variabilis_NIWA131937	TWL	SSO	SUB	-47.5	177.8	873	960	3	Cnidaria	Anthozoa	Scleractinia	Caryophylliidae	<i>Solenosmilia</i>	<i>variabilis</i>	Di Tracey	7/07/2020	NIWA 131937	4813	SVA	1	SVA
4 (Jul 2019 - Dec 2019)	Jun-20	5844	22	TRIP5844_022_Primnoidae	TWL	SSO	SUB	-47.2	178.7	920	960	3	Cnidaria	Anthozoa	Alcyonacea	Primnoidae			Di Tracey	7/07/2020				1	PRI
4 (Jul 2019 - Dec 2019)	Jun-20	5844	22	TRIP5844_022_Primnoa	TWL	SSO	SUB	-47.2	178.7	920	960	3	Cnidaria	Anthozoa	Alcyonacea	Primnoidae	<i>Primnoa</i>		Di Tracey	7/07/2020				1	PMN
4 (Jul 2019 - Dec 2019)	Jun-20	5844	22	TRIP5844_022_Tokoprymno	TWL	SSO	SUB	-47.2	178.7	920	960	3	Cnidaria	Anthozoa	Alcyonacea	Primnoidae	<i>Tokoprymno</i>		Di Tracey	7/07/2020				1	PRI
4 (Jul 2019 - Dec 2019)	Jun-20	5844	22	TRIP5844_022_Desmophyllum-dianthus	TWL	SSO	SUB	-47.2	178.7	920	960	3	Cnidaria	Anthozoa	Scleractinia	Caryophylliidae	<i>Desmophyllum</i>	<i>dianthus</i>	Di Tracey	7/07/2020				1	SIA
4 (Jul 2019 - Dec 2019)	Jun-20	5844	22	TRIP5844_022_Caryophyllia	TWL	SSO	SUB	-47.2	178.7	920	960	3	Cnidaria	Anthozoa	Scleractinia	Caryophylliidae	<i>Caryophyllia</i>		Marcelo Kitahara	10/07/2020				1	CAY
4 (Jul 2019 - Dec 2019)	Jun-20	5844	22	TRIP5844_022_Paragorgia	TWL	SSO	SUB	-47.2	178.7	920	960	3	Cnidaria	Anthozoa	Alcyonacea	Paragorgiidae	<i>Paragorgia</i>		Di Tracey	7/07/2020				1	PAB
4 (Jul 2019 - Dec 2019)	Jun-20	5844	22	TRIP5844_022_Desmophyllum-dianthus_a	TWL	SSO	SUB	-47.2	178.7	920	960	3	Cnidaria	Anthozoa	Scleractinia	Caryophylliidae	<i>Desmophyllum</i>	<i>dianthus</i>	Di Tracey	7/07/2020				1	DDI
4 (Jul 2019 - Dec 2019)	Jun-20	5844	22	TRIP5844_022_Desmophyllum-dianthus_b	TWL	SSO	SUB	-47.2	178.7	920	960	3	Cnidaria	Anthozoa	Scleractinia	Caryophylliidae	<i>Desmophyllum</i>	<i>dianthus</i>	Di Tracey	7/07/2020				0	DDI
4 (Jul 2019 - Dec 2019)	Jun-20	5812	(null)	TRIP5812_Stylasteridae_a	(null)	(null)	(null)	(null)	(null)	(null)	(null)	3	Cnidaria	Hydrozoa	Anthoathecata	Stylasteridae			Di Tracey/ Peter Marriott	7/07/2020				1	COR
4 (Jul 2019 - Dec 2019)	Jun-20	5812	(null)	TRIP5812_Stylasteridae_b	(null)	(null)	(null)	(null)	(null)	(null)	(null)	3	Cnidaria	Hydrozoa	Anthoathecata	Stylasteridae			Di Tracey/ Peter Marriott	7/07/2020				0	COR
4 (Jul 2019 - Dec 2019)	Jun-20	5812	(null)	TRIP5812_Stylasteridae_c	(null)	(null)	(null)	(null)	(null)	(null)	(null)	3	Cnidaria	Hydrozoa	Anthoathecata	Stylasteridae			Di Tracey/ Peter Marriott	7/07/2020				0	COR
4 (Jul 2019 - Dec 2019)	Jun-20	5812	(null)	TRIP5812_Stylasteridae_d	(null)	(null)	(null)	(null)	(null)	(null)	(null)	3	Cnidaria	Hydrozoa	Anthoathecata	Stylasteridae			Di Tracey/ Peter Marriott	7/07/2020				0	COR

Reporting Year (Period)	Images received	trip_number	station_number	Filename	fishing_method	target_species	start_obs_fma	trunc_start_latitude	trunc_start_longitude	start_seabed_depth	end_seabed_depth	Image Rating	Phylum	Class	Order	Family	Genus	Species	Determiner	Determined Date	NIWA Cat. No.	OSD No.	Initial OBS ID	Specimen count	Expert ID
4 (Jul 2019 - Dec 2019)	Jun-20	5812	39	TRIP5812_039_Antipathella_NIWA131888-131890	(null)	(null)	(null)	(null)	(null)	(null)	(null)	4	Cnidaria	Anthozoa	Antipatharia	Myriopathidae	<i>Antipathella</i>		Rob Stewart	14/07/2020	NIWA 131888, 131889, 131890	4765, 4764, 4763	COB	0	AHL
4 (Jul 2019 - Dec 2019)	Jun-20	5812	39	TRIP5812_039_Antipathella_NIWA131890	(null)	(null)	(null)	(null)	(null)	(null)	(null)	4	Cnidaria	Anthozoa	Antipatharia	Myriopathidae	<i>Antipathella</i>		Rob Stewart	14/07/2020	NIWA 131890	4763	COB	1	AHL
4 (Jul 2019 - Dec 2019)	Jun-20	5812	39	TRIP5812_039_Corynactis_NIWA131888	(null)	(null)	(null)	(null)	(null)	(null)	(null)	3	Cnidaria	Anthozoa	Corallimorpharia	Corallimorphidae	<i>Corynactis</i>		Estefania Rodriguez	19/12/2019	NIWA 131888	4765		1	ANT
4 (Jul 2019 - Dec 2019)	Jun-20	5812	39	TRIP5812_039_Astrobrachion-constrictum_NIWA131889	(null)	(null)	(null)	(null)	(null)	(null)	(null)	3	Echinodermata	Ophiuroidea	Euryalida	Euryalidae	<i>Astrobrachion</i>	<i>constrictum</i>	Sadie Mills	2/12/2019	NIWA 131889	4764		1	ABC
4 (Jul 2019 - Dec 2019)	Jun-20	5812	39	TRIP5812_039_Caryophyllia	(null)	(null)	(null)	(null)	(null)	(null)	(null)	3	Cnidaria	Anthozoa	Scleractinia	Caryophylliidae	<i>Caryophyllia</i>		Di Tracey	7/07/2020				1	CAY
4 (Jul 2019 - Dec 2019)	Jun-20	5844	23	TRIP5844_023_Solenosmilia-variabilis_NIWA131939_a	TWL	SSO	SOE	-44.1	178.2	975	1016	3	Cnidaria	Anthozoa	Scleractinia	Caryophylliidae	<i>Solenosmilia</i>	<i>variabilis</i>	Di Tracey	7/07/2020	NIWA 131939	4811	SVA	1	SVA
4 (Jul 2019 - Dec 2019)	Jun-20	5844	23	TRIP5844_023_Solenosmilia-variabilis_NIWA131939_b	TWL	SSO	SOE	-44.1	178.2	975	1016	3	Cnidaria	Anthozoa	Scleractinia	Caryophylliidae	<i>Solenosmilia</i>	<i>variabilis</i>	Di Tracey	7/07/2020	NIWA 131939	4811	SVA	0	SVA
4 (Jul 2019 - Dec 2019)	Jun-20	5854	2	TRIP5854_002_Keratoisis	TWL	ORH	AKW	-34.7	171.6	1040	1260	3	Cnidaria	Anthozoa	Alcyonacea	Isididae	<i>Keratoisis</i>		Di Tracey	7/07/2020				1	BOO
4 (Jul 2019 - Dec 2019)	Jun-20	5849	(null)	TRIP5849_Errina	(null)	(null)	(null)	(null)	(null)	(null)	(null)	3	Cnidaria	Hydrozoa	Anthoathecata	Stylasteridae	<i>Errina</i>		Peter Marriott	7/07/2020				1	ERR
4 (Jul 2019 - Dec 2019)	Jun-20	5854	24	TRIP5854_024_Keratoisis_NIWA131917	TWL	ORH	AKW	-34.7	171.6	1050	1166	3	Cnidaria	Anthozoa	Alcyonacea	Isididae	<i>Keratoisis</i>		Di Tracey	7/07/2020	NIWA 131917	4787	UNI	1	BOO
4 (Jul 2019 - Dec 2019)	Jun-20	5849	(null)	TRIP5849_Gorgonian_a	(null)	(null)	(null)	(null)	(null)	(null)	(null)	3	Cnidaria	Anthozoa	Alcyonacea				Di Tracey	7/07/2020				1	GOC
4 (Jul 2019 - Dec 2019)	Jun-20	5849	(null)	TRIP5849_Gorgonian_b	(null)	(null)	(null)	(null)	(null)	(null)	(null)	3	Cnidaria	Anthozoa	Alcyonacea				Di Tracey	7/07/2020				1	GOC
4 (Jul 2019 - Dec 2019)	Jun-20	5844	32	TRIP5844_032_Calyptrophora_NIWA131940	TWL	ORH	SOE	-42.7	182.2	1156	1165	3	Cnidaria	Anthozoa	Alcyonacea	Primnoidae	<i>Calyptrophora</i>		Di Tracey	7/07/2020	NIWA 131940	4810	COB	1	CTP
4 (Jul 2019 - Dec 2019)	Jun-20	5844	35	TRIP5844_035_Parantipathes_NIWA131933	TWL	ORH	SOE	-42.7	182.5	1178	1195	3	Cnidaria	Anthozoa	Antipatharia	Schizopathidae	<i>Parantipathes</i>		Rob Stewart	14/07/2020	NIWA 131933	4807	DEN	1	PTP
4 (Jul 2019 - Dec 2019)	Jun-20	5849	(null)	TRIP5849_Enallopsammia-rostrata	(null)	(null)	(null)	(null)	(null)	(null)	(null)	3	Cnidaria	Anthozoa	Scleractinia	Dendrophylliidae	<i>Enallopsammia</i>	<i>rostrata</i>	Di Tracey	7/07/2020				1	ERO
4 (Jul 2019 - Dec 2019)	Jun-20	5844	37	TRIP5844_037_Acanthogorgia_NIWA131932_a	TWL	ORH	SOE	-42.7	182.6	1182	1182	3	Cnidaria	Anthozoa	Alcyonacea	Acanthogorgiidae	<i>Acanthogorgia</i>		Di Tracey	7/07/2020	NIWA 131932	4808	GOC	1	GOC
4 (Jul 2019 - Dec 2019)	Jun-20	5844	37	TRIP5844_037_Acanthogorgia_NIWA131932_b	TWL	ORH	SOE	-42.7	182.6	1182	1182	3	Cnidaria	Anthozoa	Alcyonacea	Acanthogorgiidae	<i>Acanthogorgia</i>		Di Tracey	7/07/2020	NIWA 131932	4808	GOC	0	GOC
4 (Jul 2019 - Dec 2019)	Jun-20	5854	22	TRIP5854_022_Chrysogorgia	TWL	ORH	AKW	-34.7	171.6	1052	1052	3	Cnidaria	Anthozoa	Alcyonacea	Chrysogorgiidae	<i>Chrysogorgia</i>		Di Tracey	7/07/2020				1	CHR
4 (Jul 2019 - Dec 2019)	Jun-20	5849	(null)	TRIP5849_Swiftia	(null)	(null)	(null)	(null)	(null)	(null)	(null)	3	Cnidaria	Anthozoa	Alcyonacea	Plexauridae	<i>Swiftia</i>		Jaret Bilewitch	7/07/2020				1	PLE
4 (Jul 2019 - Dec 2019)	Jun-20	5849	(null)	TRIP5849_Placogorgia	(null)	(null)	(null)	(null)	(null)	(null)	(null)	3	Cnidaria	Anthozoa	Alcyonacea	Plexauridae	<i>Placogorgia</i>		Jaret Bilewitch	7/07/2020				1	PLE
4 (Jul 2019 - Dec 2019)	Jun-20	5854	31	TRIP5854_031_Solenosmilia-variabilis_NIWA131918	TWL	ORH	CEE	-39.9	177.9	1168	1100	3	Cnidaria	Anthozoa	Scleractinia	Caryophylliidae	<i>Solenosmilia</i>	<i>variabilis</i>	Di Tracey	7/07/2020	NIWA 131918	4790	COU	1	SVA
4 (Jul 2019 - Dec 2019)	Jun-20	5854	31	TRIP5854_031_Bathypathes-patula_NIWA131923	TWL	ORH	CEE	-39.9	177.9	1168	1100	3	Cnidaria	Anthozoa	Antipatharia	Schizopathidae	<i>Bathypathes</i>	<i>patula</i>	Rob Stewart	14/07/2020	NIWA 131923	4797	COU	1	BTP
4 (Jul 2019 - Dec 2019)	Jun-20	5851	89	TRIP5851_089_SVA_BOO_NIWA141941	TWL	SSO	SOI	-50.1	165.8	780	(null)	3	Cnidaria	Anthozoa	Scleractinia	Caryophylliidae	<i>Solenosmilia</i>	<i>variabilis</i>	Di Tracey	7/07/2020			CBR	1	SVA

Reporting Year (Period)	Images received	trip_number	station_number	Filename	fishing_method	target_species	start_obs_fma	trunc_start_latitude	trunc_start_longitude	start_seabed_depth	end_seabed_depth	Image Rating	Phylum	Class	Order	Family	Genus	Species	Determiner	Determined Date	NIWA Cat. No.	OSD No.	Initial OBS ID	Specimen count	Expert ID
4 (Jul 2019 - Dec 2019)	Jun-20	5851	89	TRIP5851_089_SVA_BOO_NIWA14194_1	TWL	SSO	SOI	-50.1	165.8	780	(null)	3	Cnidaria	Anthozoa	Alcyonacea	Isididae	<i>Keratoisis</i>		Di Tracey	7/07/2020	NIWA 131941	4809	CBR	0	BOO
4 (Jul 2019 - Dec 2019)	Jun-20	5851	89	TRIP5851_089_PC240135_1	TWL	SSO	SOI	-50.1	165.8	780	(null)	3	Cnidaria	Anthozoa	Scleractinia	Caryophyllidae	<i>Solenosmilia</i>	<i>variabilis</i>	Di Tracey	7/07/2020			CBR	1	SVA
4 (Jul 2019 - Dec 2019)	Jun-20	5851	89	TRIP5851_089_SVA_PC240136	TWL	SSO	SOI	-50.1	165.8	780	(null)	3	Cnidaria	Anthozoa	Scleractinia	Caryophyllidae	<i>Solenosmilia</i>	<i>variabilis</i>	Di Tracey	7/07/2020			CBR	1	SVA
4 (Jul 2019 - Dec 2019)	Jun-20	5851	89	TRIP5851_089_SVA_PC240137	TWL	SSO	SOI	-50.1	165.8	780	(null)	3	Cnidaria	Anthozoa	Scleractinia	Caryophyllidae	<i>Solenosmilia</i>	<i>variabilis</i>	Di Tracey	7/07/2020			CBR	1	SVA
4 (Jul 2019 - Dec 2019)	Jun-20	5851	89	TRIP5851_089_SVA_PC240139	TWL	SSO	SOI	-50.1	165.8	780	(null)	3	Cnidaria	Anthozoa	Scleractinia	Caryophyllidae	<i>Solenosmilia</i>	<i>variabilis</i>	Di Tracey	7/07/2020			CBR	1	SVA
4 (Jul 2019 - Dec 2019)	Jun-20	5851	89	TRIP5851_089_SVA_PC240140_a	TWL	SSO	SOI	-50.1	165.8	780	(null)	3	Cnidaria	Anthozoa	Scleractinia	Caryophyllidae	<i>Solenosmilia</i>	<i>variabilis</i>	Di Tracey	7/07/2020			CBR	1	SVA
4 (Jul 2019 - Dec 2019)	Jun-20	5851	89	TRIP5851_089_SVA_PC240141_b	TWL	SSO	SOI	-50.1	165.8	780	(null)	3	Cnidaria	Anthozoa	Scleractinia	Caryophyllidae	<i>Solenosmilia</i>	<i>variabilis</i>	Di Tracey	7/07/2020			CBR	0	SVA
4 (Jul 2019 - Dec 2019)	Jun-20	5851	89	TRIP5851_089_SVA_PC240142_a	TWL	SSO	SOI	-50.1	165.8	780	(null)	3	Cnidaria	Anthozoa	Scleractinia	Caryophyllidae	<i>Solenosmilia</i>	<i>variabilis</i>	Di Tracey	7/07/2020			CBR	1	SVA
4 (Jul 2019 - Dec 2019)	Jun-20	5851	89	TRIP5851_089_SVA_PC240143_b	TWL	SSO	SOI	-50.1	165.8	780	(null)	3	Cnidaria	Anthozoa	Scleractinia	Caryophyllidae	<i>Solenosmilia</i>	<i>variabilis</i>	Di Tracey	7/07/2020			CBR	0	SVA
4 (Jul 2019 - Dec 2019)	Jun-20	5851	89	TRIP5851_089_SVA_PC240144	TWL	SSO	SOI	-50.1	165.8	780	(null)	3	Cnidaria	Anthozoa	Scleractinia	Caryophyllidae	<i>Solenosmilia</i>	<i>variabilis</i>	Di Tracey	7/07/2020			CBR	1	SVA
4 (Jul 2019 - Dec 2019)	Jun-20	5851	89	TRIP5851_089_SVA_PC240145_a	TWL	SSO	SOI	-50.1	165.8	780	(null)	3	Cnidaria	Anthozoa	Scleractinia	Caryophyllidae	<i>Solenosmilia</i>	<i>variabilis</i>	Di Tracey	7/07/2020			CBR	1	SVA
4 (Jul 2019 - Dec 2019)	Jun-20	5851	89	TRIP5851_089_SVA_PC240146_b	TWL	SSO	SOI	-50.1	165.8	780	(null)	3	Cnidaria	Anthozoa	Scleractinia	Caryophyllidae	<i>Solenosmilia</i>	<i>variabilis</i>	Di Tracey	7/07/2020			CBR	0	SVA
4 (Jul 2019 - Dec 2019)	Jun-20	5851	89	TRIP5851_089_SVA_PC240147	TWL	SSO	SOI	-50.1	165.8	780	(null)	3	Cnidaria	Anthozoa	Scleractinia	Caryophyllidae	<i>Solenosmilia</i>	<i>variabilis</i>	Di Tracey	7/07/2020			CBR	1	SVA
4 (Jul 2019 - Dec 2019)	Jun-20	5851	89	TRIP5851_089_SVA_PC240148	TWL	SSO	SOI	-50.1	165.8	780	(null)	3	Cnidaria	Anthozoa	Scleractinia	Caryophyllidae	<i>Solenosmilia</i>	<i>variabilis</i>	Di Tracey	7/07/2020			CBR	1	SVA
4 (Jul 2019 - Dec 2019)	Jun-20	5851	89	TRIP5851_089_SVA_PC240149	TWL	SSO	SOI	-50.1	165.8	780	(null)	3	Cnidaria	Anthozoa	Scleractinia	Caryophyllidae	<i>Solenosmilia</i>	<i>variabilis</i>	Di Tracey	7/07/2020			CBR	1	SVA
4 (Jul 2019 - Dec 2019)	Jun-20	5851	89	TRIP5851_089_SVA_PC240150_a	TWL	SSO	SOI	-50.1	165.8	780	(null)	3	Cnidaria	Anthozoa	Scleractinia	Caryophyllidae	<i>Solenosmilia</i>	<i>variabilis</i>	Di Tracey	7/07/2020			CBR	1	SVA
4 (Jul 2019 - Dec 2019)	Jun-20	5851	89	TRIP5851_089_SVA_PC240151_b	TWL	SSO	SOI	-50.1	165.8	780	(null)	3	Cnidaria	Anthozoa	Scleractinia	Caryophyllidae	<i>Solenosmilia</i>	<i>variabilis</i>	Di Tracey	7/07/2020			CBR	0	SVA
4 (Jul 2019 - Dec 2019)	Jun-20	5851	89	TRIP5851_089_SVA_PC240152_c	TWL	SSO	SOI	-50.1	165.8	780	(null)	3	Cnidaria	Anthozoa	Scleractinia	Caryophyllidae	<i>Solenosmilia</i>	<i>variabilis</i>	Di Tracey	7/07/2020			CBR	0	SVA
4 (Jul 2019 - Dec 2019)	Jun-20	5851	89	TRIP5851_089_SVA_PC240153	TWL	SSO	SOI	-50.1	165.8	780	(null)	3	Cnidaria	Anthozoa	Scleractinia	Caryophyllidae	<i>Solenosmilia</i>	<i>variabilis</i>	Di Tracey	7/07/2020			CBR	3	SVA
4 (Jul 2019 - Dec 2019)	Jun-20	5851	89	TRIP5851_089_SVA_PC240154	TWL	SSO	SOI	-50.1	165.8	780	(null)	3	Cnidaria	Anthozoa	Scleractinia	Caryophyllidae	<i>Solenosmilia</i>	<i>variabilis</i>	Di Tracey	7/07/2020			CBR	3	SVA
4 (Jul 2019 - Dec 2019)	Jun-20	5851	89	TRIP5851_089_Desmodophyllum-dianthus	TWL	SSO	SOI	-50.1	165.8	780	(null)	3	Cnidaria	Anthozoa	Scleractinia	Caryophyllidae	<i>Desmodophyllum</i>	<i>dianthus</i>	Di Tracey	7/07/2020			CBR	0	DDI
4 (Jul 2019 - Dec 2019)	Jun-20	5851	89	TRIP5851_089_Isididae	TWL	SSO	SOI	-50.1	165.8	780	(null)	3	Cnidaria	Anthozoa	Alcyonacea	Isididae			Di Tracey	7/07/2020			CBR	0	ISI
4 (Jul 2019 - Dec 2019)	Jun-20	5851	89	TRIP5851_089_SVA_PC240157_a	TWL	SSO	SOI	-50.1	165.8	780	(null)	3	Cnidaria	Anthozoa	Scleractinia	Caryophyllidae	<i>Solenosmilia</i>	<i>variabilis</i>	Di Tracey	7/07/2020			CBR	1	SVA
4 (Jul 2019 - Dec 2019)	Jun-20	5851	89	TRIP5851_089_SVA_PC240158_b	TWL	SSO	SOI	-50.1	165.8	780	(null)	3	Cnidaria	Anthozoa	Scleractinia	Caryophyllidae	<i>Solenosmilia</i>	<i>variabilis</i>	Di Tracey	7/07/2020			CBR	0	SVA

Reporting Year (Period)	Images received	trip_number	station_number	Filename	fishing_method	target_species	start_obs_fma	trunc_start_latitude	trunc_start_longitude	start_seabed_depth	end_seabed_depth	Image Rating	Phylum	Class	Order	Family	Genus	Species	Determiner	Determined Date	NIWA Cat. No.	OSD No.	Initial OBS ID	Specimen count	Expert ID	
4 (Jul 2019 - Dec 2019)	Jun-20	5851	89	TRIP5851_089_SVA_PC240159_c	TWL	SSO	SOI	-50.1	165.8	780	(null)	3	Cnidaria	Anthozoa	Scleractinia	Caryophylliidae	<i>Solenosmilia</i>	<i>variabilis</i>	Di Tracey	7/07/2020			CBR	0	SVA	
4 (Jul 2019 - Dec 2019)	Jun-20	5851	89	TRIP5851_089_Keratois NIWA13194 1_a	TWL	SSO	SOI	-50.1	165.8	780	(null)	3	Cnidaria	Anthozoa	Alcyonacea	Isididae	<i>Keratois</i>		Di Tracey	7/07/2020	NIWA 131941	4809	CBR	1	BOO	
4 (Jul 2019 - Dec 2019)	Jun-20	5851	89	TRIP5851_089_Keratois NIWA13194 1_b	TWL	SSO	SOI	-50.1	165.8	780	(null)	3	Cnidaria	Anthozoa	Alcyonacea	Isididae	<i>Keratois</i>		Di Tracey	7/07/2020	NIWA 131941	4809	BOO	0	BOO	
4 (Jul 2019 - Dec 2019)	Jun-20	5851	89	TRIP5851_089_Keratois NIWA13194 1_c	TWL	SSO	SOI	-50.1	165.8	780	(null)	3	Cnidaria	Anthozoa	Alcyonacea	Isididae	<i>Keratois</i>		Di Tracey	7/07/2020	NIWA 131941	4809	BOO	0	BOO	
4 (Jul 2019 - Dec 2019)	Jun-20	5851	92	TRIP5851_092_BOO_ISI_SVA	TWL	ORH	SOI	-50.1	165.8	1395	1245	3	Cnidaria	Anthozoa	Scleractinia	Caryophylliidae	<i>Solenosmilia</i>	<i>variabilis</i>	Di Tracey	7/07/2020				1	SVA	
4 (Jul 2019 - Dec 2019)	Jun-20	5851	92	TRIP5851_092_BOO_ISI_SVA	TWL	ORH	SOI	-50.1	165.8	1395	1245	3	Cnidaria	Anthozoa	Alcyonacea	Isididae	<i>Keratois</i>		Di Tracey	7/07/2020				1	BOO	
4 (Jul 2019 - Dec 2019)	Jun-20	5851	92	TRIP5851_092_BOO_ISI_SVA	TWL	ORH	SOI	-50.1	165.8	1395	1245	3	Cnidaria	Anthozoa	Alcyonacea	Isididae	<i>Keratois</i>		Di Tracey	7/07/2020				1	ISI	
4 (Jul 2019 - Dec 2019)	Jun-20	5851	92	TRIP5851_092_Keratois	TWL	ORH	SOI	-50.1	165.8	1395	1245	3	Cnidaria	Anthozoa	Alcyonacea	Isididae	<i>Keratois</i>		Di Tracey	7/07/2020				BOO	1	BOO
4 (Jul 2019 - Dec 2019)	Jun-20	5851	92	TRIP5851_092_Keratois NIWA13194 4_b	TWL	ORH	SOI	-50.1	165.8	1395	1245	3	Cnidaria	Anthozoa	Alcyonacea	Isididae	<i>Keratois</i>		Di Tracey	7/07/2020	NIWA 131944	4815	BOO	0	BOO	
4 (Jul 2019 - Dec 2019)	Jun-20	5851	92	TRIP5851_092_Keratois NIWA13194 4_a	TWL	ORH	SOI	-50.1	165.8	1395	1245	3	Cnidaria	Anthozoa	Alcyonacea	Isididae	<i>Keratois</i>		Di Tracey	7/07/2020	NIWA 131944	4815	BOO	1	BOO	
4 (Jul 2019 - Dec 2019)	Jun-20	5851	92	TRIP5851_092_Primnoidae	TWL	ORH	SOI	-50.1	165.8	1395	1245	3	Cnidaria	Anthozoa	Alcyonacea	Primnoidae			Diana Macpherson	13/07/2020				BOO	1	PRI
4 (Jul 2019 - Dec 2019)	Jun-20	5851	92	TRIP5851_092_SVA_PC250171	TWL	ORH	SOI	-50.1	165.8	1395	1245	3	Cnidaria	Anthozoa	Scleractinia	Caryophylliidae	<i>Solenosmilia</i>	<i>variabilis</i>	Di Tracey	7/07/2020				CBR	1	SVA
4 (Jul 2019 - Dec 2019)	Jun-20	5851	92	TRIP5851_092_SVA_PC250172	TWL	ORH	SOI	-50.1	165.8	1395	1245	3	Cnidaria	Anthozoa	Scleractinia	Caryophylliidae	<i>Solenosmilia</i>	<i>variabilis</i>	Di Tracey	7/07/2020				CBR	1	SVA
4 (Jul 2019 - Dec 2019)	Jun-20	5851	92	TRIP5851_092_Tokoprymo	TWL	ORH	SOI	-50.1	165.8	1395	1245	3	Cnidaria	Anthozoa	Alcyonacea	Primnoidae	<i>Tokoprymo</i>		Di Tracey	7/07/2020				CBR	1	PRI
4 (Jul 2019 - Dec 2019)	Jun-20	5851	92	TRIP5851_092_Bryozoa	TWL	ORH	SOI	-50.1	165.8	1395	1245	3	Bryozoa						Di Tracey	7/07/2020				CBR	1	COZ
4 (Jul 2019 - Dec 2019)	Jun-20	5851	92	TRIP5851_092_SVA_PC250177	TWL	ORH	SOI	-50.1	165.8	1395	1245	3	Cnidaria	Anthozoa	Scleractinia	Caryophylliidae	<i>Solenosmilia</i>	<i>variabilis</i>	Di Tracey	7/07/2020				CBR	1	SVA
4 (Jul 2019 - Dec 2019)	Jun-20	5851	92	TRIP5851_092_SVA_ISI	TWL	ORH	SOI	-50.1	165.8	1395	1245	3	Cnidaria	Anthozoa	Alcyonacea	Isididae			Di Tracey	7/07/2020				CBR	1	ISI
4 (Jul 2019 - Dec 2019)	Jun-20	5851	92	TRIP5851_092_SVA_ISI	TWL	ORH	SOI	-50.1	165.8	1395	1245	3	Cnidaria	Anthozoa	Scleractinia	Caryophylliidae	<i>Solenosmilia</i>	<i>variabilis</i>	Di Tracey	7/07/2020				CBR	1	SVA
4 (Jul 2019 - Dec 2019)	Jun-20	5851	92	TRIP5851_092_BOO_ISI_SVA_THO	TWL	ORH	SOI	-50.1	165.8	1395	1245	3	Cnidaria	Anthozoa	Alcyonacea	Isididae	<i>Keratois</i>		Di Tracey	7/07/2020				CBR	1	BOO
4 (Jul 2019 - Dec 2019)	Jun-20	5851	92	TRIP5851_092_BOO_ISI_SVA_THO	TWL	ORH	SOI	-50.1	165.8	1395	1245	3	Cnidaria	Anthozoa	Alcyonacea	Isididae			Di Tracey	7/07/2020				CBR	0	ISI
4 (Jul 2019 - Dec 2019)	Jun-20	5851	92	TRIP5851_092_BOO_ISI_SVA_THO	TWL	ORH	SOI	-50.1	165.8	1395	1245	3	Cnidaria	Anthozoa	Scleractinia	Caryophylliidae	<i>Solenosmilia</i>	<i>variabilis</i>	Di Tracey	7/07/2020				CBR	0	SVA
4 (Jul 2019 - Dec 2019)	Jun-20	5851	92	TRIP5851_092_BOO_ISI_SVA_THO	TWL	ORH	SOI	-50.1	165.8	1395	1245	3	Cnidaria	Anthozoa	Alcyonacea	Primnoidae	<i>Thouarella</i>		Di Tracey	7/07/2020				CBR	1	THO
4 (Jul 2019 - Dec 2019)	Jun-20	5851	92	TRIP5851_092_ISI_SVA	TWL	ORH	SOI	-50.1	165.8	1395	1245	3	Cnidaria	Anthozoa	Alcyonacea	Isididae			Di Tracey	7/07/2020				CBR	1	ISI
4 (Jul 2019 - Dec 2019)	Jun-20	5851	92	TRIP5851_092_ISI_SVA	TWL	ORH	SOI	-50.1	165.8	1395	1245	3	Cnidaria	Anthozoa	Scleractinia	Caryophylliidae	<i>Solenosmilia</i>	<i>variabilis</i>	Di Tracey	7/07/2020				CBR	1	SVA

Reporting Year (Period)	Images received	trip_number	station_number	Filename	fishing_method	target_species	start_obs_fma	trunc_start_latitude	trunc_start_longitude	start_seabed_depth	end_seabed_depth	Image Rating	Phylum	Class	Order	Family	Genus	Species	Determiner	Determined Date	NIWA Cat. No.	OSD No.	Initial OBS ID	Specimen count	Expert ID
4 (Jul 2019 - Dec 2019)	Jun-20	5851	92	TRIP5851_092_BOO_SVA	TWL	ORH	SOI	-50.1	165.8	1395	1245	3	Cnidaria	Anthozoa	Scleractinia	Caryophylliidae	<i>Solenosmilia</i>	<i>variabilis</i>	Di Tracey	7/07/2020			CBR	1	SVA
4 (Jul 2019 - Dec 2019)	Jun-20	5851	92	TRIP5851_092_BOO_SVA	TWL	ORH	SOI	-50.1	165.8	1395	1245	3	Cnidaria	Anthozoa	Alcyonacea	Isididae	<i>Keratoisis</i>		Di Tracey	7/07/2020			BOO	1	BOO
4 (Jul 2019 - Dec 2019)	Jun-20	5851	92	TRIP5851_092_Tokoprymno_NIWA147600	TWL	ORH	SOI	-50.1	165.8	1395	1245	3	Cnidaria	Anthozoa	Alcyonacea	Primnoidae	<i>Tokoprymno</i>		Stephen Cairns	12/07/2020	NIWA 147600	4819	THO	1	PRI
4 (Jul 2019 - Dec 2019)	Jun-20	5851	92	TRIP5851_092_Thouarella-variabilis_NIWA131946_1	TWL	ORH	SOI	-50.1	165.8	1395	1245	3	Cnidaria	Anthozoa	Alcyonacea	Primnoidae	<i>Thouarella</i>	<i>variabilis</i>	Stephen Cairns	12/07/2020	NIWA 131946	4819	THO	1	THO
4 (Jul 2019 - Dec 2019)	Jun-20	5851	92	TRIP5851_092_Thouarella-variabilis_NIWA131946_2	TWL	ORH	SOI	-50.1	165.8	1395	1245	3	Cnidaria	Anthozoa	Alcyonacea	Primnoidae	<i>Thouarella</i>	<i>variabilis</i>	Stephen Cairns	12/07/2020	NIWA 131946	4819	THO	1	THO
4 (Jul 2019 - Dec 2019)	Jun-20	5851	92	TRIP5851_092_Thouarella	TWL	ORH	SOI	-50.1	165.8	1395	1245	3	Cnidaria	Anthozoa	Alcyonacea	Primnoidae	<i>Thouarella</i>		Stephen Cairns	12/07/2020			THO	1	THO
4 (Jul 2019 - Dec 2019)	Jun-20	5851	92	TRIP5851_092_Stylasteridae	TWL	ORH	SOI	-50.1	165.8	1395	1245	3	Cnidaria	Hydrozoa	Anthoathecata	Stylasteridae			Peter Marriott	7/07/2020			CRE	1	COR
4 (Jul 2019 - Dec 2019)	Jun-20	5851	93	TRIP5851_093_BOO_ISI_SVA	TWL	ORH	SOI	-50	165.8	1164	1245	3	Cnidaria	Anthozoa	Scleractinia	Caryophylliidae	<i>Solenosmilia</i>	<i>variabilis</i>	Di Tracey	7/07/2020			CBR	1	SVA
4 (Jul 2019 - Dec 2019)	Jun-20	5851	93	TRIP5851_093_BOO_ISI_SVA	TWL	ORH	SOI	-50	165.8	1164	1245	3	Cnidaria	Anthozoa	Alcyonacea	Isididae			Di Tracey	7/07/2020			CBR	1	ISI
4 (Jul 2019 - Dec 2019)	Jun-20	5851	93	TRIP5851_093_BOO_ISI_SVA	TWL	ORH	SOI	-50	165.8	1164	1245	3	Cnidaria	Anthozoa	Alcyonacea	Isididae	<i>Keratoisis</i>		Di Tracey	7/07/2020			CBR	1	BOO
4 (Jul 2019 - Dec 2019)	Jun-20	5844	136	TRIP5844_136_Paragorgia_NIWA131934	TWL	ORH	SOE	-42.7	182.5	1210	1228	3	Cnidaria	Anthozoa	Alcyonacea	Paragorgiidae	<i>Paragorgia</i>		Di Tracey	7/07/2020	NIWA 131934	4806	PAB	1	PAB
4 (Jul 2019 - Dec 2019)	Jun-20	5844	170	TRIP5844_170_Acanella	TWL	ORH	SOE	-44	185.4	847	1135	3	Cnidaria	Anthozoa	Alcyonacea	Isididae	<i>Acanella</i>		Di Tracey	7/07/2020				1	ACN

(b) Spreadsheet summary of specimens identified from images received in April 2017

Reporting Year (Period)	Images received	trip_number	station_number	Filename	fishing_method	target_species	start_obs_fma	trunc_start_latitude	trunc_start_longitude	start_seabed_depth	end_seabed_depth	Rating	Phylum	Class	Order	Family	Genus	Species	Determiner	Determined Date	NIWA Cat. No.	OSD No.	Initial OBS ID	Specimen count	Expert ID
1 (Jul 2016 - Jun 2017)	Apr-17	4465	16	TRIP4465_016_Dendropathes_a	TWL	ORH	AKW	-36	173	946	944	3	Cnidaria	Anthozoa	Antipatharia	Schizopathidae	<i>Dendropathes</i>		Rob Stewart	7/12/2018				1	DDP
1 (Jul 2016 - Jun 2017)	Apr-17	4465	16	TRIP4465_016_Dendropathes_b	TWL	ORH	AKW	-36	173	946	944	3	Cnidaria	Anthozoa	Antipatharia	Schizopathidae	<i>Dendropathes</i>		Rob Stewart	7/12/2018				0	DDP
1 (Jul 2016 - Jun 2017)	Apr-17	4465	16	TRIP4465_016_Dendropathes_c	TWL	ORH	AKW	-36	173	946	944	3	Cnidaria	Anthozoa	Antipatharia	Schizopathidae	<i>Dendropathes</i>		Rob Stewart	7/12/2018				0	DDP
1 (Jul 2016 - Jun 2017)	Apr-17	4465	16	TRIP4465_016_Dendropathes_d	TWL	ORH	AKW	-36	173	946	944	3	Cnidaria	Anthozoa	Antipatharia	Schizopathidae	<i>Dendropathes</i>		Rob Stewart	7/12/2018				0	DDP
1 (Jul 2016 - Jun 2017)	Apr-17	4465	28	TRIP4465_028_Dendrobathypathes	TWL	BYX	AKW	-34.6	168.9	621	895	3	Cnidaria	Anthozoa	Antipatharia	Schizopathidae	<i>Dendrobathypathes</i>		Rob Stewart	7/12/2018				1	DEN
1 (Jul 2016 - Jun 2017)	Apr-17	4465	28	TRIP4465_028_Triadopathes_a	TWL	BYX	AKW	-34.6	168.9	621	895	3	Cnidaria	Anthozoa	Antipatharia	Stylopathidae	<i>Triadopathes</i>		Rob Stewart	7/12/2018				1	TDP
1 (Jul 2016 - Jun 2017)	Apr-17	4465	28	TRIP4465_028_Triadopathes_b	TWL	BYX	AKW	-34.6	168.9	621	895	3	Cnidaria	Anthozoa	Antipatharia	Stylopathidae	<i>Triadopathes</i>		Rob Stewart	7/12/2018				0	TDP
1 (Jul 2016 - Jun 2017)	Apr-17	4465	33	TRIP4465_033_Tylopathes_NIWA95177_a	TWL	BYX	AKW	-34.6	168.9	566	981	3	Cnidaria	Anthozoa	Antipatharia	Stylopathidae	<i>Tylopathes</i>		Rob Stewart	20/03/2017	NIWA 95177	3194		1	SLP
1 (Jul 2016 - Jun 2017)	Apr-17	4465	33	TRIP4465_033_Tylopathes_NIWA95177_b	TWL	BYX	AKW	-34.6	168.9	566	981	3	Cnidaria	Anthozoa	Antipatharia	Stylopathidae	<i>Tylopathes</i>		Rob Stewart	20/03/2017	NIWA 95177	3194		0	SLP
1 (Jul 2016 - Jun 2017)	Apr-17	4589		TRIP4589_Bathypathes_2	(null)	(null)	(null)	(null)	(null)	(null)	(null)	4	Cnidaria	Anthozoa	Antipatharia	Schizopathidae	<i>Bathypathes</i>		Rob Stewart	7/12/2018				1	BTP
1 (Jul 2016 - Jun 2017)	Apr-17	4589		TRIP4589_Dendrobathypathes	(null)	(null)	(null)	(null)	(null)	(null)	(null)	3	Cnidaria	Anthozoa	Antipatharia	Schizopathidae	<i>Dendrobathypathes</i>		Rob Stewart	7/12/2018				1	DEN
1 (Jul 2016 - Jun 2017)	Apr-17	4589		TRIP4589_Dendropathes	(null)	(null)	(null)	(null)	(null)	(null)	(null)	3	Cnidaria	Anthozoa	Antipatharia	Schizopathidae	<i>Dendropathes</i>		Rob Stewart	7/12/2018				2	DDP
1 (Jul 2016 - Jun 2017)	Apr-17	4676	10	TRIP4676_010_Dendropathes	TWL	ORH	CHA	-39.8	168.2	930	992	3	Cnidaria	Anthozoa	Antipatharia	Schizopathidae	<i>Dendropathes</i>		Rob Stewart	7/12/2018			COB	1	DDP