

# **GIBSON'S WANDERING ALBATROSS RESEARCH ADAMS ISLAND 2013**

Graeme Elliott and Kath Walker  
549 Rocks Road  
Nelson

April 2013

**Prepared in part fulfilment of Department of Conservation contract 4434:  
POP2012-07 Gibson's Albatross –population estimate.**

## INTRODUCTION

Gibson's wandering albatross (*Diomedea gibsoni*) are endemic to the Auckland Island archipelago, with approximately 95% of the population breeding on Adams Island, the southern-most island in the group. They forage largely in the Tasman Sea, but also along the continental shelf off southern and south eastern Australia, and off eastern New Zealand (Walker & Elliott 2006). The population is in decline, and is regarded as a 'Nationally Vulnerable' threatened species (Miskelly *et al.* 2008).

They are a rare, but regular by-catch in New Zealand long-line fisheries, with small numbers annually caught on observed domestic and chartered vessels (Thompson 2009 & 2010). In 2012 it was estimated that from 1998-99 to 2008-09 in the New Zealand fisheries alone, between 35 and 65 Gibson's wandering albatrosses per year were caught (Francis *et al.* 2012), a substantial number for such a long-lived, slow-breeding species. Of the 51 birds caught during this period which were autopsied, all but one were adults and there was an even sex ratio, although it's not known whether the autopsied birds were representative of the bycatch (Francis *et al.* 2012).

Numbers actually caught are likely to be considerably higher than those reported, as many long-line hooks set in New Zealand and Australian waters are from small unobserved domestic vessels, and there are substantial unobserved long-line fleets in international waters in the mid Tasman Sea and the SW Pacific Ocean (Francis *et al.* 2012) where the birds regularly forage (Walker & Elliott 2006).

Due to the vulnerability of this species, their survival, productivity, recruitment and population trends have been monitored during almost annual visits to Adams Island since 1991. In the 1990's the population slowly increased following a major, presumably fisheries-induced, decline during the 1980's (Walker & Elliott 1999). However, in 2005 there was a sudden drop of more than 40% in the size of the breeding population. Since 2005, the adult population has been declining at 5.7% per year, because of substantial reductions in three demographic rates: adult survival (from 0.95 to 0.89), proportion breeding (from 0.53 to 0.37), and the proportion of breeding attempts that are successful (from 0.60 to 0.25) (Francis *et al.* 2012). The Gibson's wandering albatross population is now only about two-thirds of its estimated size in 1991, with slow increases since 2005 in adult survival and proportion breeding, but continuing low productivity (Francis *et al.* 2012).

With ongoing fisheries bycatch of a species in marked decline, further information was sought on the adult survival and population trends of Gibson's wandering albatrosses in 2012/13. This report summarises the most recent findings on the current status of Gibson's wandering albatrosses, collected over the 2012/13 summer.

## METHODS

### Population study

Details of the methods used, study area locations and earlier results are given in Walker & Elliott 1999, Elliott & Walker 2005, and Walker & Elliott 2006.

In brief, summer visits are made to Adams Island and all birds found within or near a 61 ha "Study Area" are checked for bands. An attempt is made to identify both birds at every nest in the Study Area, and any that have no bands are banded. All nests are labelled and mapped, the success of the previous year's nests is assessed, and the chicks produced are banded. This data enables calculation of survivorship, productivity, recruitment and attendance on the breeding grounds.

The number of active nests in 3 areas representative of low, medium and high density nesting habitat on Adams Island are counted each year. These comprise c.10% of all the nests on Adams Island, and the annual census of these blocks provides an estimate of population trends (Elliott & Walker 2005).

Survival is estimated from the banded birds with mark-recapture statistical methods using the statistical software M-Surge (Choquet *et al.* 2005), and population size is estimated from the actual counts of birds and the sighting probabilities produced when estimating survival.

### **Changes in the at-sea distribution of Gibson's wandering albatrosses**

Since 2009 we have been attaching and retrieving geolocator dataloggers to Gibson's wandering albatrosses to compare the foraging locations when the population was declining, with those used a decade earlier when it was growing. So far dataloggers have been attached to and retrieved from 49 birds.

Locations of the birds were calculated from the light data using BASTRak, TransEdit and BirdTracker software supplied by British Antarctic Survey (Fox 2007). More "reasonable" flight paths were obtained when we used estimated longitude from the logger's light data, and estimated latitude by matching the sea temperature data recorded by the logger with the nearest sea-surface temperature at the estimated longitude. We used monthly sea-surface temperature data available from <http://dss.ucar.edu>.

We compared tracking data collected using geolocator loggers between 2009 and 2013 with data obtained from satellite transmitters between 1994 and 2003 using kernel density plots. Kernels were estimated using the function `kde2d` in the MASS package (Venables & Ripley, 2002) in the statistical language R (R Development Core Team, 2011). We used bivariate normal kernels, with a normal reference bandwidth (Venables & Ripley, 2002). Longitudes were transformed by the cosine of latitude to make units of latitude and longitude approximately equal.

## **RESULTS**

### **Population trends**

The three blocks in which nests have been counted since 1998 were counted again in late January or early February 2013. While still comparatively low relative to the size of the population a decade ago, the number of nests in the three blocks in 2013 was the highest it had been since the population crashed in 2005 (Table 1, Figure 1).

Table 1: The number of Gibson's wandering albatross nests in late January in three census blocks on Adams Island 1998-2013.

| Year | Rhys's Ridge (low density) | Amherst-Astrolabe (medium density) | Fly Square (high density) | Total number of nests |
|------|----------------------------|------------------------------------|---------------------------|-----------------------|
| 1998 | 60                         | 483                                | 248                       | 781                   |
| 1999 | 60                         | 446                                | 237                       | 743                   |
| 2000 | 45                         | 284                                | 159                       | 488                   |
| 2001 | 64                         | 410                                | 201                       | 675                   |
| 2002 | 60                         | 408                                | 246                       | 675                   |
| 2003 | 71                         | 496                                | 217                       | 784                   |
| 2004 | 77                         | 501                                | 284                       | 862                   |
| 2005 | 34                         | 323                                | 72                        | 412                   |
| 2006 | 15                         | 185                                | 79                        | 279                   |
| 2007 | 38                         | 230                                | 132                       | 400                   |
| 2008 | 26                         | 201                                | 91                        | 318                   |
| 2009 | 28                         | 238                                | 120                       | 386                   |
| 2010 | 32                         | 237                                | 114                       | 383                   |
| 2011 | 33                         | 255                                | 137                       | 425                   |
| 2012 | 35                         | 224                                | 120                       | 379                   |
| 2013 | 39                         | 315                                | 138                       | 492                   |

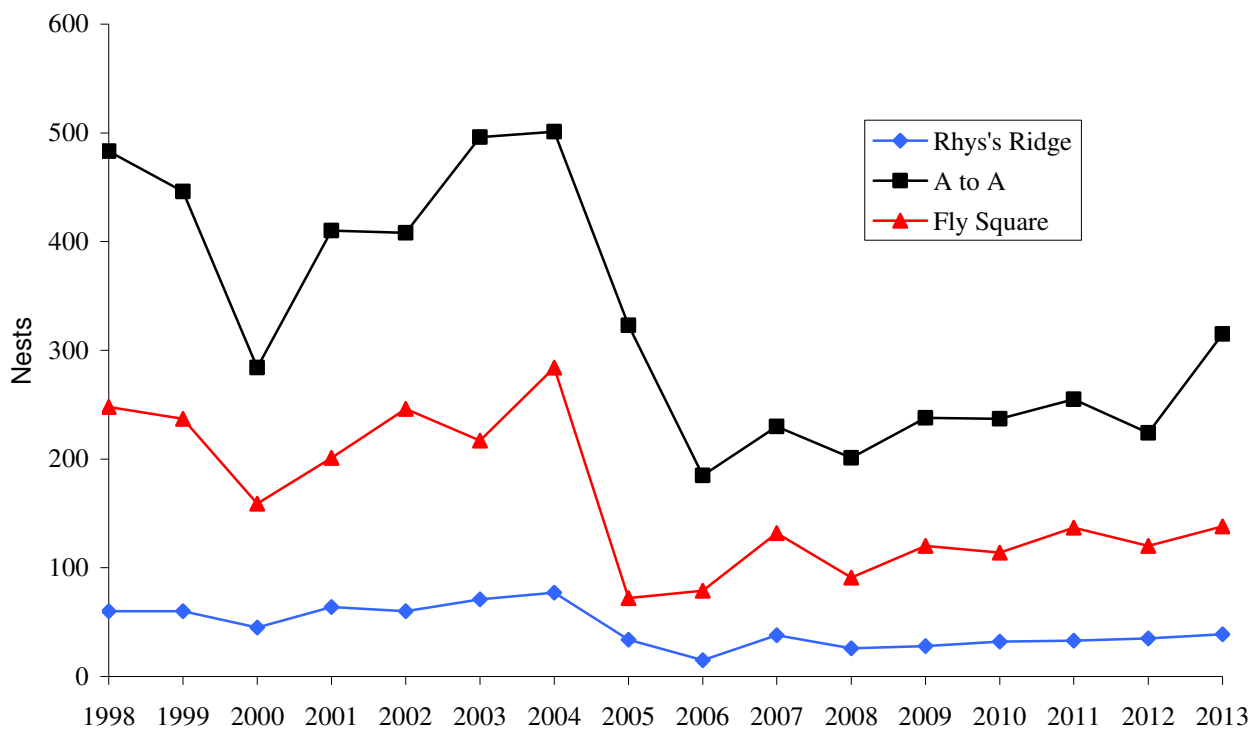


Figure 1. The number of Gibson's wandering albatross nests in three census blocks on Adams Island since 1998.

From the ratio between the number of nests in our census blocks and the total number of nests counted on the Auckland Islands in 1997 (Walker & Elliott, 1999) we can estimate the number of pairs breeding on the Auckland Islands. There were approximately 5000 pairs nesting in 2013, about the same as in 1991, but only 57% of the peak population of 8701 pairs recorded in 2004 (Table 2).

Table 2: Estimated number of breeding pairs of Gibson's wandering albatross.

|       |      |      |      |      |      |      |      |      |      |      |      |      |      |
|-------|------|------|------|------|------|------|------|------|------|------|------|------|------|
| Year  | 1991 | 1993 | 1994 | 1995 | 1997 | 1998 | 1999 | 2000 | 2001 | 2002 | 2003 | 2004 | 2005 |
| Pairs | 4964 | 5270 | 4826 | 6678 | 7417 | 7883 | 7499 | 4926 | 6813 | 6813 | 7913 | 8701 | 4158 |
| Year  | 2006 | 2007 | 2008 | 2009 | 2010 | 2011 | 2012 | 2013 |      |      |      |      |      |
| Pairs | 2816 | 4037 | 3210 | 3896 | 3866 | 4290 | 3825 | 4966 |      |      |      |      |      |

## Population size

The size of the breeding population as estimated by mark-recapture was increasing up until 2004, but between 2004 and 2006 the number of breeding females decreased by more than 50%, with a smaller decrease amongst males. Since 2006 a major disparity in the number of adult males and females alive has gradually narrowed, as the size of the female breeding population remained low but approximately stable, while the size of the male breeding population slowly declined (Figure 2).

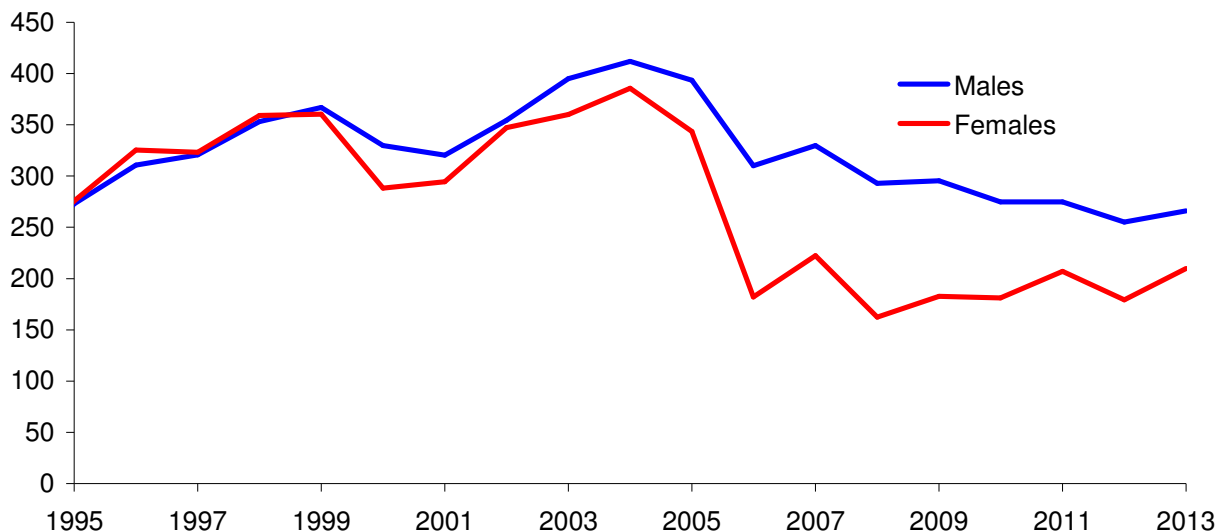


Figure 2. The number of breeding birds in the study area on Adams Island estimated by mark-recapture.

Using the modelling techniques of Francis *et al.* (2012) it is possible to estimate the total population size (as opposed to the total number of breeders) but this is beyond the scope of this report.

## Survivorship

Data gathered over the 2012/13 summer allowed survival for 2011 and 2012 to be calculated, although results for 2012 should be treated with caution until a further year of data has been collected. Male survival was very low (85.2%) in 2012, with female survival also low at 89.5%. Adult survivorship has been lower than average since 2004, with extremely low female survivorship in 2006 and 2008 (Figure 3), the cause of a major sex imbalance in the breeding population over these years.

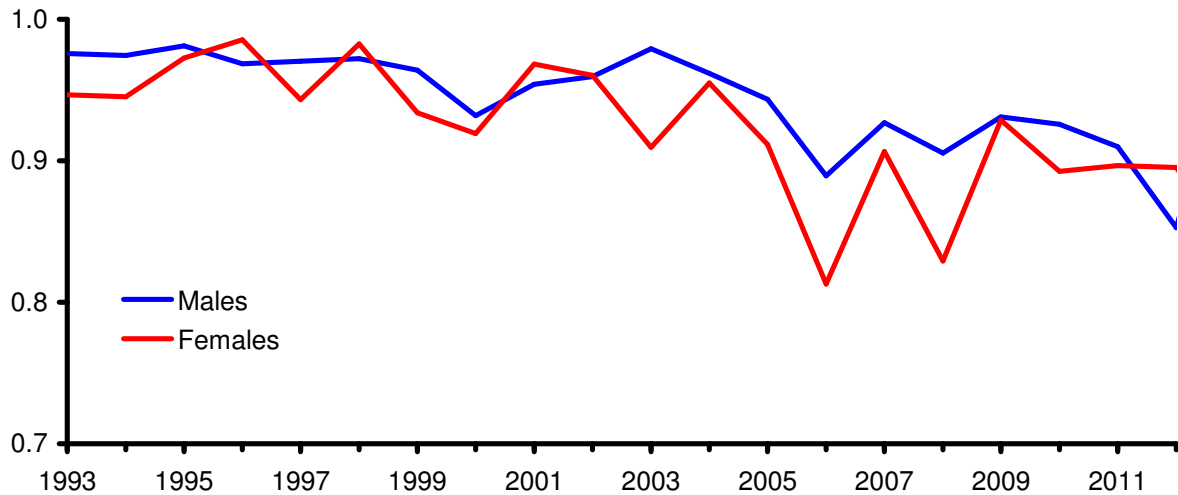


Figure 3. The annual survival of birds in the study area on Adams Island estimated by mark-recapture.

## Recruitment

The number of birds breeding for the first time in the Study Area (Figure 4) has been very variable, but dropped significantly in 2005 and 2006 and has been slowly increasing since then.

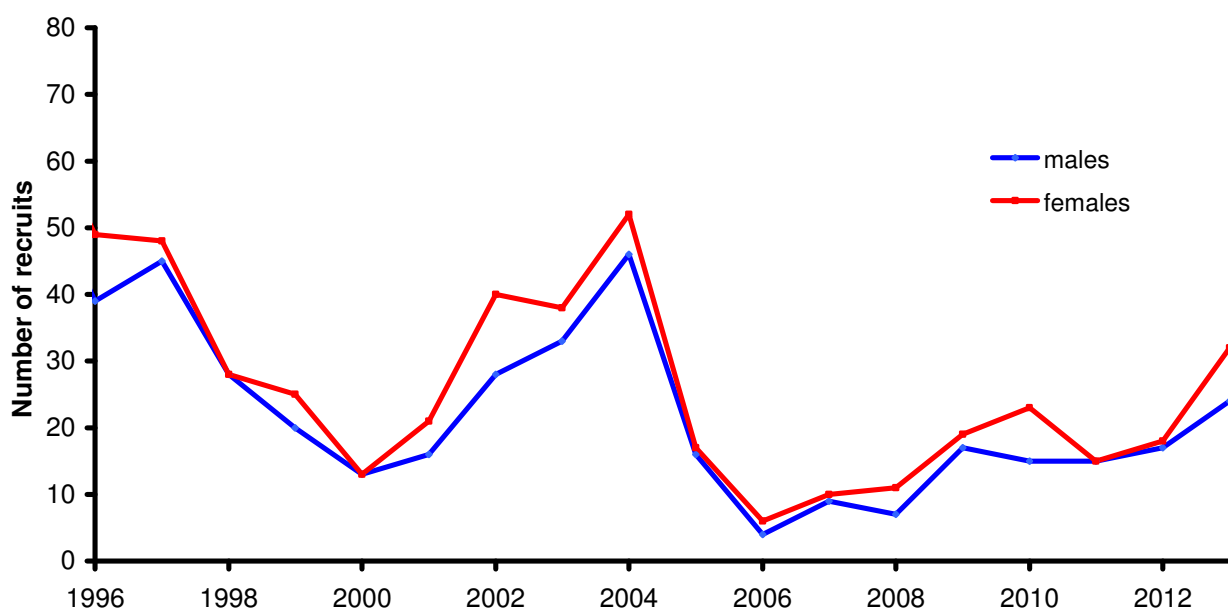


Figure 4: Number of birds recruiting to the breeding population on Adams Island since 1996.

## Nesting success and productivity

Nesting success in 2012 was 43%, with 49 chicks fledging. This was similar to the 2011 season, and an improvement on the 24%-25% nesting success rate of 2006-2009. However, it remains much lower than the norm of about 60% prior to the collapse of the population in 2005, and the number of chicks produced remains small because of the smaller numbers of pairs attempting to breed.

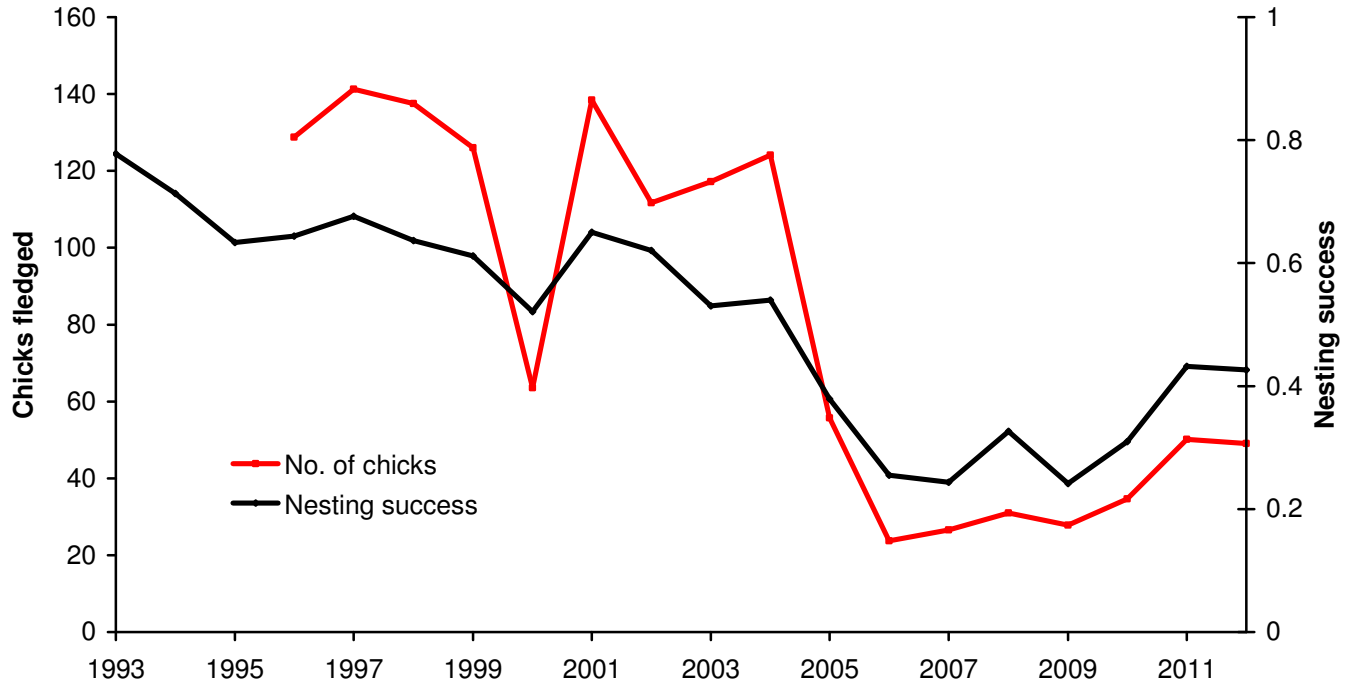


Figure 5: Nesting success and number of chicks fledged from the study area on Adams Island since 1993.

## Changes in the at-sea distribution of Gibson's wandering albatrosses

So far we have successfully tracked 49 birds using geolocator loggers and we have 59 bird-years of tracking data from birds at all stages of their breeding cycle (Table 3).

Table 3: Numbers of Gibson's wandering albatrosses at different life history stages tracked using geolocator dataloggers deployed on Adams Island since 2009. The data is in bird-years as some birds were tracked for two years..

| Sex     | Failed breeders | Non-breeders | Breeders | Sabbatical | Total |
|---------|-----------------|--------------|----------|------------|-------|
| Females | 11              | 13           | 5        | 4          | 33    |
| Males   | 4               | 17           | 3        | 2          | 26    |

We have undertaken a preliminary analysis of the logger tracking data between 2009 and 2013 and compared it with the satellite tracking data we obtained from 46 birds tracked between 1994 and 2003 (Walker & Elliott 2006).

Although the pattern of distribution of tracked birds between decades was similar, both males and females went further north, and males further south in 2009-13 than they did in 1994-2003 (Figures 6). There was also a conspicuous increase in use of the oceans in the western Great Australian Bight particularly by female non-breeders, and males and females made more use of oceans to the east of New Zealand in 2009-2013 than they did in 1994-2003 (Figures 6).

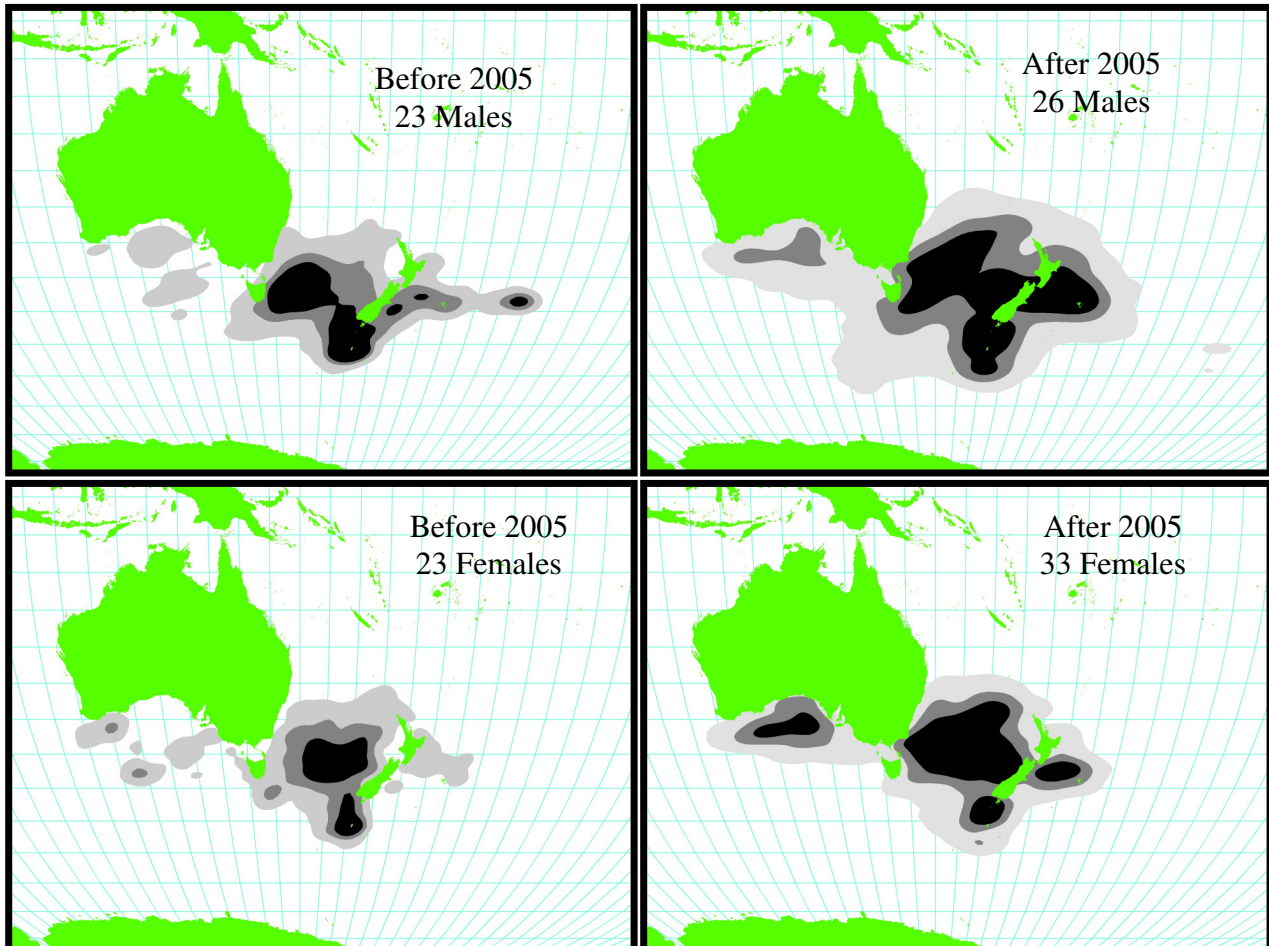


Figure 6: Kernel density plots of Gibson's wandering albatrosses tracked while breeding and not breeding in 1994-2003 and 2009-2013. Black indicates the 50% contour, dark grey the 75% contour, and light grey the 95% contour.

## CONCLUSIONS

Nearly all the population parameters with which one might assess the conservation status of Gibson's wandering albatross have been below average since 2004, and although there has been an improvement in recruitment, nesting success and survival from their low points in 2006, these parameters are still below their pre-2004 levels.

Analysis of tracking data from geolocator dataloggers indicates birds are travelling greater distances and foraging more widely than they did in 1994-2003. Breeding females, in particular have a much bigger foraging range.



The combination of increased foraging range and poor breeding success suggests that these albatrosses are foraging more widely for a smaller amount of food, which in turn suggests a collapse in the abundance of the squid and fish populations they prey on, or at least a change in their distribution.

Tracking data lends some support to the theory that there have been deleterious changes to the marine environment west of New Zealand. Changes in the south Tasman Sea and the south west Pacific Ocean appear to have been of sufficient magnitude to significantly alter the distribution of Gibson's wandering albatrosses. Since birds are now foraging further from the breeding island than they used to, in oceans not used a decade ago, the opportunity to encounter long-line fishing fleets and the attractiveness of such fleets to birds may have increased. The energetic costs of rearing chicks has almost certainly risen.

Our data provides no explanation of the cause of the sudden drop in survival in 2005. The drop in survivorship was co-incident with the rapid expansion of a surface long-line swordfish-fishery both inside New Zealand's territorial waters and in international waters in the western Pacific Ocean, but there is no evidence one way or the other that the swordfish-fishery and albatross survivorship are linked.

Monitoring the population of Gibson's wandering albatrosses on Adams Island remains an important conservation priority.

## ACKNOWLEDGMENTS

Our particular thanks to Colin O'Donnell and Don Geddes who very competently carried out an extensive field programme on Adams Island in January-February 2013, and to Jo Hiscock who banded the chicks there in November 2012. We also thank Pete McClelland, Jo Hiscock and Sharon Trainor of Southern Islands Area Office of the Department of Conservation for their invaluable logistic support for the project, and Steve Kafta of *Evohe* and Henk Haazen of *Tiama* for safely transporting the teams to and from the island. This project was funded by the Department of Conservation's Conservation Services Programme ([www.doc.govt.nz/csp](http://www.doc.govt.nz/csp)) project POP2012-07, partially through a levy on the quota holders of relevant commercial fish stocks.

## REFERENCES

- Choquet, R.; Reboulet, A.M.; Pradel, R.; Gimenez, O.; Lebreton, J.D. 2005. M-SURGE 1-8 User's Manual. CEFE, Montpellier, France. <http://ftp.cefe.cnrs.fr/biom/Soft-CR/>
- Elliott G.; Walker, K. 2005. Detecting population trends of Gibson's and Antipodean wandering albatrosses. *Notornis* 52: 215-222.
- Fox, J.W. 2007. Geolocator manual version 6 (06/06/07). Unpublished report, British Antarctic Survey, Cambridge, UK.
- Francis, R.I.C.C.; Elliott, G.; Walker, K. 2012. Fisheries risks to the viability of Gibson's wandering albatross *Diomedea gibsoni*. Draft New Zealand Aquatic Environment and Biodiversity Report to Ministry of Fisheries project PRO200602.
- Miskelly, C.M. et al. 2008. Conservation status of New Zealand birds. *Notornis* 55 (3): 117-135.

R Development Core Team. 2011. R: A language and environment for statistical computing. R Foundation for Statistical Computing, Vienna, Austria. ISBN 3-900051-07-0, URL <http://www.R-project.org/>.

Thompson, D.R. 2009. Autopsy report for seabirds killed and returned from observed New Zealand fisheries. DOC Marine Conservation Services Series 3, Department of Conservation, Wellington.

Thompson, D.R. 2010. Autopsy report for seabirds killed and returned from New Zealand fisheries, 1 October 2008 to 30 September 2009. Report prepared for the Conservation Services Programme, Department of Conservation: Contract NT2007/02.

Venables, W.N.; Ripley, B.D. 2002. Modern applied statistics with S. Springer, New York.

Walker, K.; Elliott, G. 1999. Population changes and biology of the wandering albatross *Diomedea exulans gibsoni* at the Auckland Islands. *Emu* 99: 239-247

Walker, K.; Elliott, G. 2006. At-sea distribution of Gibson's and Antipodean wandering albatrosses, and relationships with long-line fisheries. *Notornis* 53 (3): 265-290