

Southern royal albatross at Enderby Island — analysis of aerial photographs



Final Report

**Report prepared for
Department of Conservation**

**G. Barry Baker and Katrina Jensz
June 2013**

Southern royal albatross at Enderby Island — analysis of aerial photographs

1. Introduction

The southern royal albatross (*Diomedea epomophora*) is an endemic New Zealand seabird species that breeds on sub-Antarctic islands. Most birds (99%) breed on Campbell Island with a small number of birds breeding on the Auckland Island group, including Enderby and Adams Is (ACAP 2009). The species is a biennial breeder and is currently assessed as Vulnerable to extinction. Historically all colonies were impacted to some extent by human exploitation, agriculture and introduced mammals, but the major threat is now considered to be fisheries bycatch in longline and trawl fishing operations (ACAP 2009).

The global population is estimated to number 8,300-8,700 annual breeding pairs on Campbell Island (Moore et al. 2012), with a further 60 pairs breeding each year on Enderby Island. Recent counts on Enderby Island in 2002-2008 have fluctuated from 52 to 66 nests annually (L. Chilvers unpublished data, in ACAP 2009). There are no recent data on the number of pairs breeding on Adams and Auckland Island but in the early 1990s there were 15 and five pairs, respectively. The main population of southern royal albatrosses on Campbell Island is thought to have recovered following a major reduction due to human settlement and introduced mammals and to have stabilised between 1995 and 2004-08 (Moore et al. 2012). On Enderby Island, where royal albatrosses were extirpated by human exploitation by about 1868 (Taylor 1971), the population has steadily increased after re-colonising the island in the 1940s (Childerhouse 2003, ACAP 2009). Trends for the Adams and Auckland Island populations are unknown.

Accurate estimation of numbers is critical for determining conservation status, and for identifying the key factors influencing changes in population size and demography of albatrosses. In recent years technological advances in both cameras, lenses and image processing software, have led to aerial photography becoming increasingly preferred as the census method of choice for surface nesting seabirds, especially in remote locations (Wolfaardt and Phillips 2011). The technique has been applied to a range of colonially nesting albatross and petrel species including black-browed albatross *Thalassarche melanophrys* and grey-headed albatross *T. chrysostoma* in Chile (Arata et al. 2003; Robertson et al. 2007), black-browed albatrosses in the Falkland Islands (Strange 2008), white-capped albatrosses *T. steadi* in New Zealand (Baker et al. 2013), shy albatross *T. cauta* in Australia (Alderman et al 2011) and southern giant petrels *Macronectes giganteus* in the Falkland Islands (Reid & Huin 2008).

Not all colonies lend themselves to being censused accurately by aerial photography, and those photographed successfully at this stage have been high-density colonies. Techniques used for colonial species have involved low altitude flights over colonies and taking sequential overlapping photographs which are later stitched together using software to form photomontages, from which apparently occupied nests are counted on-screen (Wolfaardt and Phillips 2011). Most of the great albatross (*Diomedea spp.*) species are not highly colonial and typically nests are widely dispersed. As a result aerial censusing has not been attempted so far for albatross populations that possess these characteristics. Large distances between nests that are placed in essentially featureless topography pose challenges that may not be easily addressed through existing techniques, and their effectiveness needs to be tested for these more dispersed species

This project was developed to test the suitability of aerial survey methods for counting the breeding population of the southern royal albatross on Enderby Island. Specifically, we were tasked to;

- analyse a series of photographs taken at Enderby Island in January 2013;
- assess the suitability of aerial survey methods for this species at Enderby Island
- consider the potential suitability of aerial survey methods for monitoring other great albatross species, and/or at other sites
- provide recommendations for further work to better assess the suitability of aerial methods for these species or sites; and
- provide recommendations for developing a standard aerial survey methodology for great albatross species

2. Methods

The Site

The Auckland Islands (50° 44'S, 166° 06'E) lie 460 km south of New Zealand's South Island, and comprise the largest island group in the New Zealand sub Antarctic. The archipelago consists of four larger islands (Auckland, Enderby, Adams and Disappointment Islands), together with a set of smaller islands (Peat 2006). Within the archipelago, southern royal albatrosses breed mainly on Enderby Island, with a few birds nesting on the high slopes of Adams Island, notably above Gilroy Head and between Fly Harbour and Lake Turbott (Tickell 2000).

Enderby Island (50°30'S, 166°20'E) is a small (710 ha) low lying island with a maximum elevation of 45 metres located at the northern end of the Auckland Islands archipelago. Southern rata *Metrosideros umbellata* form thick forests and scrub along the south and east side of the island, but elsewhere the vegetation changes to a moorland that covers a broad belt in the centre of the island, with tussock grassland dominating the lower lying, more exposed areas (Russ & Terauds 2009). Most of the c. 60 pairs of southern royal albatross breeding each year on Enderby Island nest within the moorland and grassland vegetation.

Field Work

On 17 January 2013 between 1100 to 1600 NZDT we used a helicopter chartered from Southern Lakes Helicopters Company as an aerial platform to photograph nesting southern royal albatrosses on Enderby Island. The aircraft, a single-engined Squirrel AS350B3, was piloted by Mark Deaker (Southern Lakes Helicopters Company). On board was Barry Baker (photographer and project coordinator), Mark Holdsworth (back-up photographer), and Louise Chilvers and Pete McClelland (Department of Conservation representatives).

We flew a series of eight transects (Figure 1) spaced at 200 m centres that ran from west to east, and took a series of overlapping photographs as each transect was traversed. Transect start and end points, shown below, were programmed into the on-board GPS system and the helicopter was flown along each transect at a constant flight height.

Transect No.	Start (decimal mins)		End (decimal mins)	
	Latitude	Longitude	Latitude	Longitude
1	50 30.270	166 16.0	50 30.270	166 19.417
2	50 30.162	166 16.0	50 30.162	166 19.417
3	50 30.054	166 16.0	50 30.054	166 19.417
4	50 29.946	166 16.0	50 29.946	166 19.417
5	50 29.838	166 16.0	50 29.838	166 19.417
6	50 29.730	166 16.0	50 29.730	166 19.417
7	50 29.622	166 16.0	50 29.622	166 19.417
8	50 29.514	166 16.0	50 29.514	166 19.417
9	50 29.405	166 16.0	50 29.405	166 19.417

For the photography, two photographers were positioned on the port side of the aircraft to permit each to take photographs of the island simultaneously. All photographs were taken through the open port side of the aircraft using Nikon D800 digital cameras and Nikkor 24— 70 mm F2.8 or Nikkor 18—200 mmF4 VR zoom lenses. Shutter speeds were set at 1/1000 s or faster to minimise camera shake, and the camera held facing downward at an angle of 70 degrees. This ensured the plane of focus was as parallel to the surface as possible without allowing the aircraft landing skid to appear in the camera viewfinder. The focal length of the zoom lens was not adjusted as transects were traversed. From each transect we produced a series of overlapping images that covered the entire length of the transect. All photographs of the colony were saved as fine JPG format files. The survey photographs of Enderby Island were taken at an altitude of 700 feet with the zoom lenses set at a focal length of 35 mm. This combination of flight height and focal length was derived from an earlier trial of lens/flight height combinations designed to ensure complete ground coverage (adequate overlap between

transects) when used with 200 m transects. At the time of the flight the weather was calm and clear with minimal cloud, and we were able to obtain clear photographs of the island during the flight. The entire sets of photographs were subsequently replicated to ensure that complete back-up sets existed both on portable hard drives and in at least three different locations. A full collection of photographs will also be submitted to the Department of Conservation on the completion of the contract.

Counting protocol

We used protocols previously developed for aerial censuses of Chilean albatross colonies (Arata et al, 2003; Robertson *et al.* 2007) and refined in other aerial surveys work in the Auckland Islands (Baker et al 2013). Briefly, photographic montages of each transect (Figure 2) were constructed from overlapping photographs using the image editing software package ADOBE PHOTOSHOP (<http://www.adobe.com/>). Counts of all royal albatrosses on each montage were then made by magnifying the image to view birds and using the paintbrush tool in PHOTOSHOP to mark each bird with a coloured circle as they were counted. To assist with counting we used a hand held click counter. Once all birds had been counted on a photo-montage, the file was saved to provide an archival record of the count. Each single bird was assumed to represent a breeding pair. While most birds were alone at nest sites, we also counted instances when two birds were sitting close together and assumed to both be members of a nesting pair. In this situation, both birds were counted, and the number of pairs recorded. The number of pairs was subsequently deducted from the total number of birds to derive an estimate of annual breeding pairs.

Diomedea epomophora breeds biennially if successful in rearing a chick. Birds return to colonies in October. Eggs are laid from late November to late December Incubation takes on average 78.5 ± 2.8 days with chicks hatching in early February to early March, and fledging in early October to early December. Age of first return to colonies is at least 5 years and age at first breeding is thought to be around 6-12 years of age (ACAP 2009 and references therein). The photography was undertaken during the mid-incubation period and when chicks hatched in the previous year had fledged and left the island. However, pre-breeding juveniles (age >5 years) were also present on the island, usually occurring in groups comprising two or more individuals. We also counted non-breeding birds, assuming that any birds that were visibly standing or associated with other birds to be non-breeders.

Counts of photo montages were undertaken by one observer only and no attempt was made to investigate counter variability associated with miscounting and misidentifying white spots on the ground as birds, or confusing age classes.

Ground counts

During late January (within a week of the aerial photography) a complete search of Enderby I. for royal albatross nests was made using techniques described by Childerhouse et al (2003). Briefly, searching was undertaken on foot generally starting at the western end of the Island and moving to the eastern end. Searches were undertaken by up to 2–3 people, walking 20–40 m apart, keeping in visual and voice contact. Most of the effort was spent searching the relatively clear herbfields and along the edge of the rata forest and mapou (*Myrsine* sp.) bush on the top (approximately 40 m a.s.l.) of the Island. Other parts of the Island were surveyed opportunistically as time permitted. The only areas which were not searched were inside the dense rata forest which has an average canopy height of 4–5 m.

Most searches were conducted by naked eye, but binoculars were used to scan areas from high vantage points prior to ground searches. If a bird or suspected nest was seen from a distance, it was visited to confirm the presence of a nest. The locations of all nests were marked on a map and GPS positions of nests were taken using a handheld GPS.

3. Results

3.1 Aerial counts

We estimate there were 54 pairs of southern royal albatross breeding on Enderby Island in January 2013 (Table 1), and a further two birds (pairs) which we were uncertain about. One bird was assessed as being the partner of an incubating bird, and 17 birds were non-breeders.

3.2 Ground counts

Ground searches found 52 pairs of nesting southern royal albatross breeding on Enderby Island in January 2013.

4. Discussion

The counts of nesting royal albatross breeding pairs derived from aerial photography were very similar to those resulting from ground searches, demonstrating that the methodology we used has good potential for use with other great albatross species nesting in similar habitat. There are a few areas where modifications to the techniques would be considered in future work on these species.

The flight height and lens/camera combination (700 feet/35mm focal length on a full-frame sensor) was selected because it was felt this would provide practical spatial coverage and adequate overlap between transects, while also leading to image quality that would permit easy detection of nesting birds. In practice, overlap between transects was generally satisfactory but not complete across all transects. Although the gaps were small and not continuous along transects, and it would appear that not many, if any, nesting birds were missed, it is nonetheless an area that needs to be further examined. The loss of coverage may have been due to slight flight deviations in the course of a transect (pilot error which we were unable to confirm as we did not record the flight path), or inadequate attention to detail by photographers during the flight. In subsequent post-flight debriefing both photographers mentioned they focussed on achieving adequate overlap between each frame (sides of photo frames) and this may have been at the expense of overlap between transects (top and bottom of photo frames). This could be resolved by selecting a wider angle lens for transect spacing of 200 m, say 30mm focal length, but this would lead to lower resolution and loss of data crucial for determining the breeding status of birds detected.

Photo resolution at the flight height and lens combination selected was adequate for determining breeding status but was not at the level currently achieved in photographic surveys of white-capped albatross in the Auckland Islands (Baker et al 2013). This is to be expected because of the wider focal length selected for this project (35mm v 70mm minimum selected for white-capped albatross surveys) but we would have preferred greater resolution to improve confidence when assessing the status of birds detected. We classified any bird clearly sitting on the ground to be nesting, but we were unable to actually see nesting material, which would have been useful. Birds that were clearly non-breeding were obvious because their feet were evident or it was clear from their posture they were standing, but it is possible some loafing non-breeders may have been resting on the ground and assumed to be incubating. Taking further photographs of a random selection of birds using a longer focal length lens following the completion of transect work may be useful in future studies. This would provide a representative sample of 'close-up' photographs that could be used to confirm the proportion of breeding/non-breeding birds in colonies, as is currently practice in white-capped albatross surveys (Baker et al 2013).

Stitching of photographs along transects was easily achieved but determining areas of spatial overlap between each transect was time consuming and difficult at times. This problem was mainly due to the slight distortion between the top and bottom of each photograph, caused because it was not possible to hold the camera directly parallel to the ground surface. Ideally the camera should be held facing downward at an angle of 90 degrees, and not 70 degrees, as was necessary because of the layout of the aircraft. The photographic distortion was comparatively small but when looking to find visible features that can be used to assess overlap in photographs, it was sufficient to make the task more difficult than it would be with distortion-free images.

Given the spatial extent of some great albatross populations, it may be more appropriate to use randomised or stratified transects to sample populations and develop scaled-up estimates of population size. The technique we trialled would be suitable for this purpose, but it would be necessary to accurately assess the spatial coverage (transect width) obtained by a particular camera/focal length/flight height combination. Although this can be calculated theoretically using camera and lens specifications for a specified flight height, experience has shown that such data are not always accurately stated by gear manufacturers and we would recommend that this be determined by measurement in the field prior to commencing such surveys. Specifying camera/lens combinations

and flight heights would enable transect widths to be standardised. In conducting fixed width transects for sampling populations consideration should be given to the use of a fixed focal length lens to avoid accidental movement of zoom lens settings for focal length, and appropriate GPS technology in selected aircraft to ensure specified flight heights are maintained over variable terrain.

Acknowledgements

This project was funded by the Department of Conservation. The support of Igor Debski of DOC during the development of the project was greatly appreciated. We thank Pete McClelland and Louise Chilvers for assistance in pre-survey trials of flight heights and lens focal length combinations, and Mark Holdsworth for photographic support. Southern Lakes Helicopters and pilot Mark Deaker provided an excellent photographic platform for the study. We also thank Simon Childerhouse, Jacinda Amey, Anne McCrone and Derek Hamer for conducting the ground count.

References

- Agreement on the Conservation of Albatrosses and Petrels. 2009. ACAP Species assessment: Southern royal albatross *Diomedea epomophora*. Downloaded from <http://www.acap.aq> on 4 July 2013.
- Alderman, R., Gales, R., Tuck, G.N. and Lebreton, J.D. 2011. Global population status of shy albatross and an assessment of colony-specific trends and drivers. *Wildlife Research* <http://dx.doi.org/10.1071/WR10199>
- Arata, J., Robertson, G. Valencia, J. and Lawton, K. 2003. The Evangelistas Islets, Chile: a new breeding site for black-browed albatrosses. *Polar Biology* 26: 687-690.
- Baker, G. B., Jensz, K., and Cunningham, R. 2013. White-capped albatross population estimate — 2011/12 and 2012/13. Report prepared for the New Zealand Department of Conservation, Contract 4431 & Project POP2012-05, June 2013 (unpublished). Latitude 42 Environmental Consultants, Kettering, Australia (www.latitude42.com.au).
- Childerhouse, S., Robertson, C., Hockly, W., and Gibbs, N., 2003. Royal albatross (*Diomedea epomophora*) on Enderby Island, Auckland Islands. DOC Science Internal Series 144. Department of Conservation. Wellington. 19 p.
- Moore, P.J., Larsen, E.J., Charteris, M., Pryde, M. 2012: Southern royal albatross on Campbell Island/Motu Ihupuku: solving a band injury problem and population survey, 2004–08. DOC Research and Development Series 333. Department of Conservation, Wellington. 49 p.
- Moore, P.J., Scott, J.J., Joyce, L.J., and Peart, M. 1997. Southern royal albatross *Diomedea epomophora epomophora* census on Campbell Island, 4 January-6 February 1996, and a review of population figures. Science & Research Series no. 101. Department of Conservation. Wellington. 27 pp.
- Reid, T.A. & Huin, N. 2008: Census of Southern Giant Petrel population of the Falkland Islands 2004/2005. *Bird Conservation International* 18: 118-128.
- Robertson, C.J.R. 1975. Report on the distribution, status and breeding biology of the Royal Albatross, wandering albatross and white-capped mollymawk on the Auckland Islands. Pp. 143-150 in Preliminary Results of the Auckland Island Expedition 1972-73 ed by J.C.Yaldwyn. New Zealand Department of Lands and Survey.
- Robertson, R., Lawton, K., Moreno, C., Kirkwood, R. and Valencia, J. 2007. Comparison of census methods for black-browed albatrosses breeding at the Ildefonso Archipelago, Chile. *Polar Biology* DOI 10.1007/s00300-007-0342-7
- Russ, R. and Terauds, A. 2009. Galapagos of the Antarctic: wild islands south of New Zealand. Heritage Expeditions, Christchurch New Zealand
- Strange, I.J. 2008. Aerial surveys of Black-browed Albatross *Thalassarche melanophris* breeding colonies in the Falkland Islands: the methodology employed and comparisons with surveys

carried out in 1986-2005-2006 and 2007. Design in Nature & Falkland Islands Wildlife, Stanley, Falkland Islands.

Tickell, W. L. N. 2000. Albatrosses. Pica, Sussex

Wolfaardt, A. and Phillips, R. 2011. Guideline census methodologies for albatrosses and petrels. Joint BSWG4/STWG6 Doc 6. Downloaded from www.acap.aq on 4 July 2013.

Table 1. Counts of nesting and non-breeding southern royal albatross, made from photomontages taken on eight aerial transects, Enderby Island, 17 January 2013.

Transect	Breeding	Not sure	Non-breeding	Breeding pairs
1	0	0	0	0
2	2	0	0	0
3	9	1	4	0
4	0	0	0	0
5	18	0	3	0
6	22	0	8	1
7	3	1	2	0
8	0	0	0	0
Total	54	2	17	1

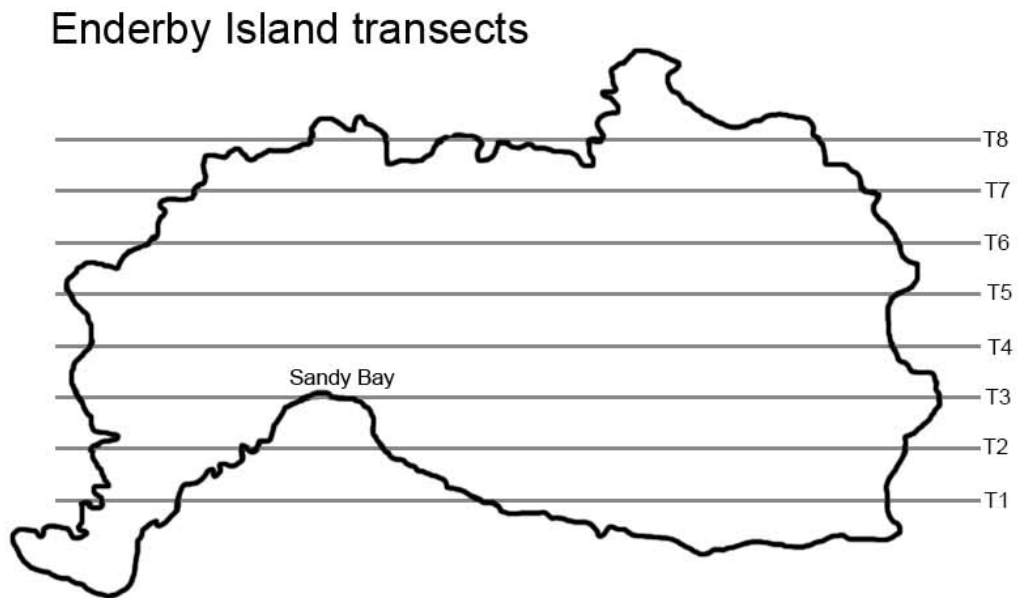


Figure 1. Location of transects spaced at 200 m centres, Enderby Island.

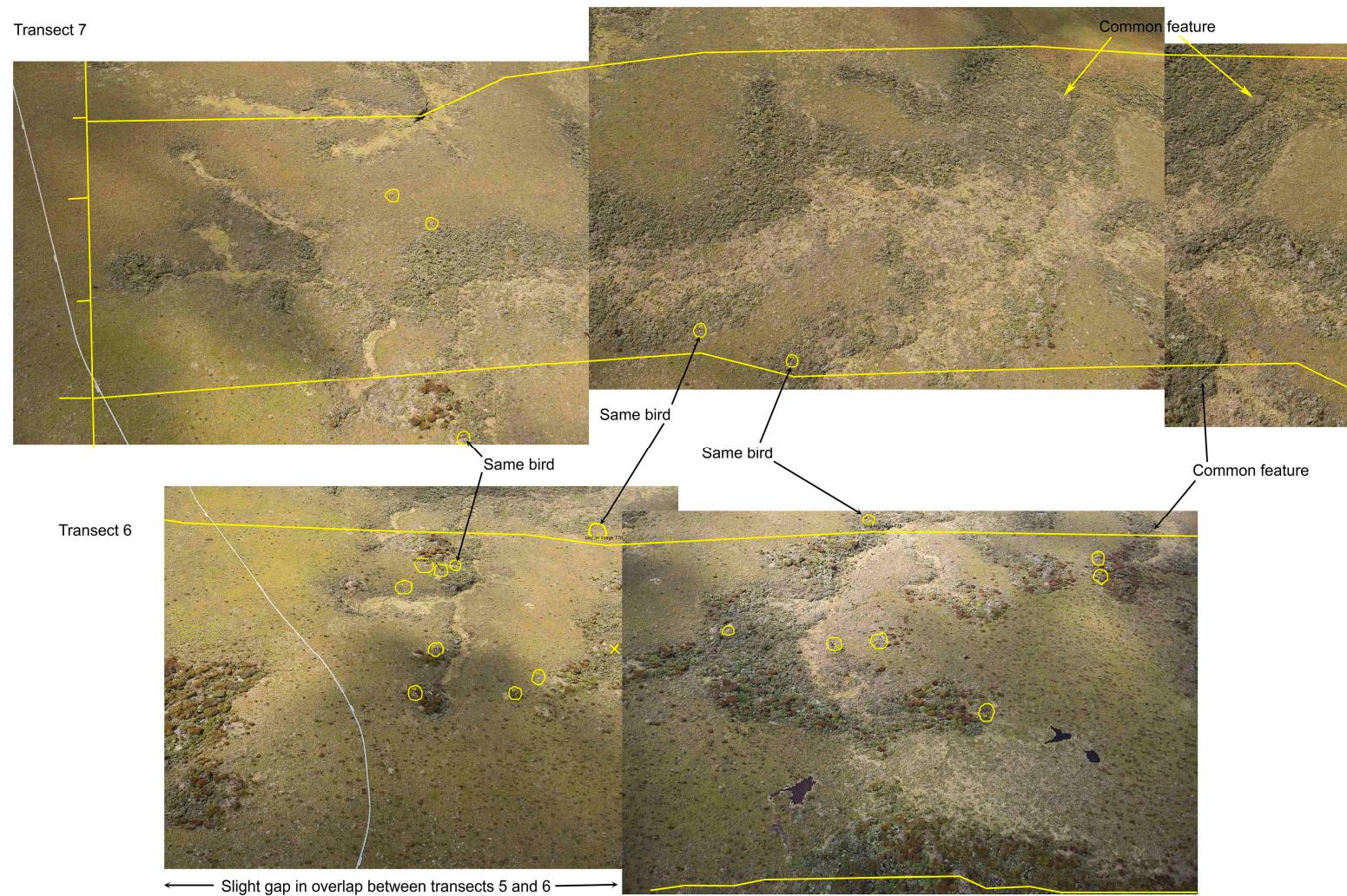


Figure 2. Example of photographic montages of two transects constructed from overlapping photographs. Southern royal albatross nesting birds are indicated by the yellow circles. Common features are used to identify overlap between transects.

Nesting bird



Non-breeding birds



Figure 3. Examples of images of southern royal albatrosses and their breeding status assessed from aerial photographs.