



Motuhara Seabird Research: January 2022 field trip

Mike Bell

mike@toroaconsulting.co.nz

Acknowledgements

- Motuhara is Maori Freehold Land, and this work has been carried out in partnership with the island owners



Field trip

- Team of two
- January 25 to February 2 2022
- Island in good condition, continuing trend of deep soil and well vegetated



Field trip

- Struck some poor weather
- c.20mm rain
- 45 knots SW blow
- Not too unusual for the Chatham's, but did cause nest losses, especially to Buller's Mollymawk



Royal Albatross

- 71 banded birds from last season re-sighted
- 226 addition breeders banded



Static camera deployment

Five cameras set up covering
breeding areas

One camera failed

Covid-19 lockdown in August
reduced data collection period



Challenges with camera review

- Vegetation growth
- Movement of larger chicks



ENDURO

0011 056F 13°C 09/03/2021 13:56:32

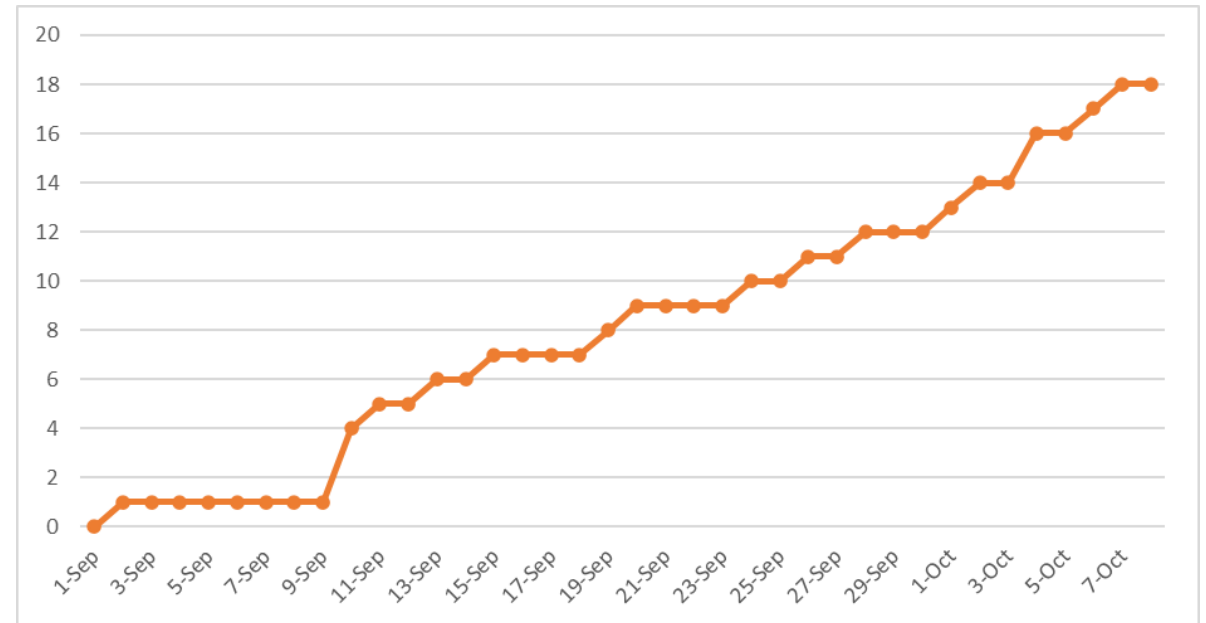


ENDURO

0011 046F 07°C 09/10/2021 15:48:33

Camera results -

- 24 nests where chick fate could be followed through to fledging
- 17 chicks fledged (70%) – although 4 chicks “missing” presumed to perish
- Fledging Sept 2nd – Oct 7th



Buller's Mollymawk

68% of marked nests active at
time of visit

80% of birds banded last
season re-sighted

88 additional birds banded





GLS recovery

- 55 GLS devices deployed Jan 2021
- 49 recovered
- Outside scope of this project to analysis data



Aerial survey grids

- 5 existing and 5 new grids counted
- Grids show an increase in nest density since 2016
- Recommend island wide census

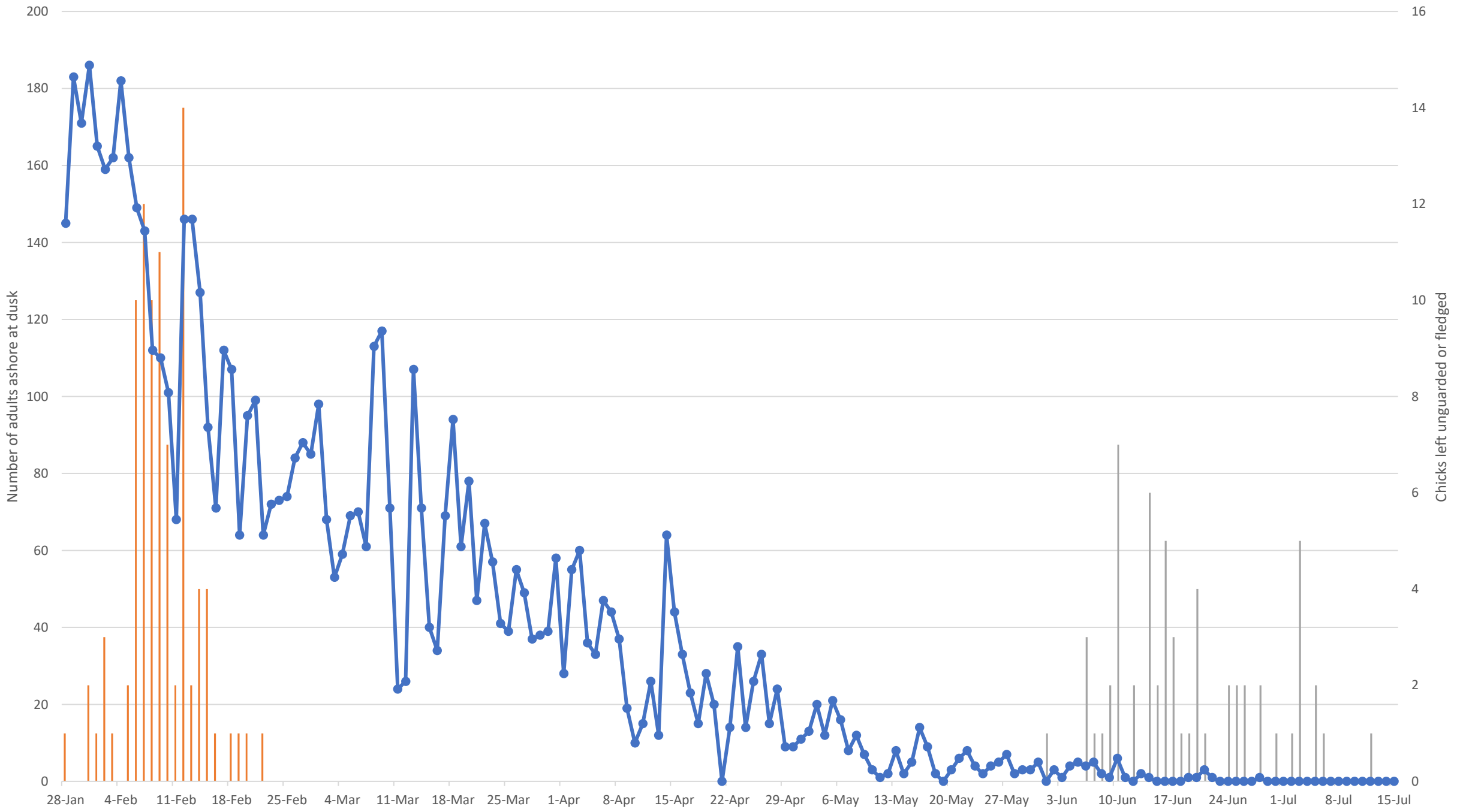


Static camera deployment

Five cameras set up to cover
breeding areas

81 nests followed across all
cameras





Camera results

- Post guard stage Jan 28th –Feb 22nd
- Fledging June 1st – July 12th
- Fledging success 73%

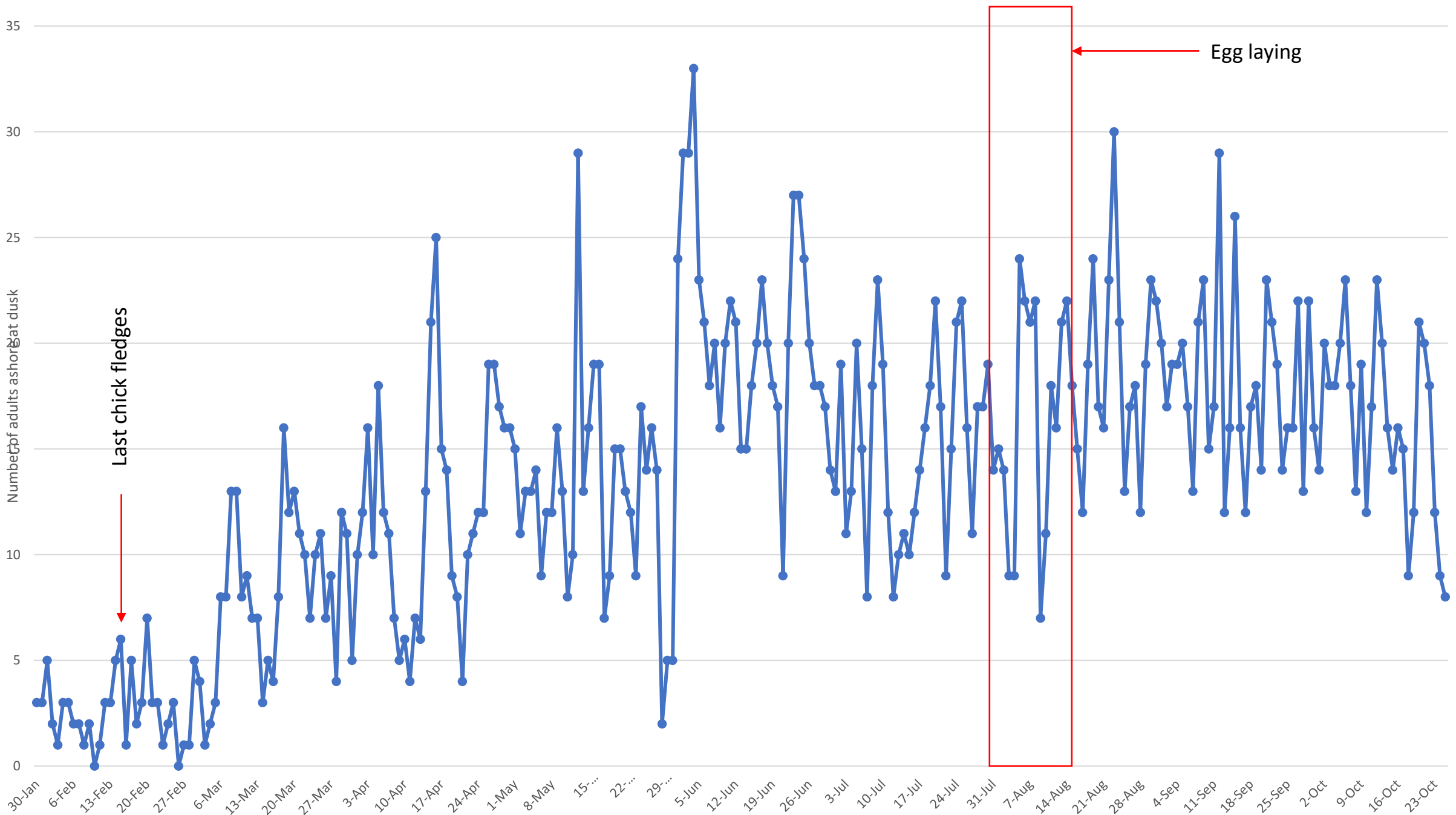


Northern Giant petrel

- Chick banding -
- 350 near fledged chicks banded

- Static camera deployment -
- 2 cameras set up – difficult to find areas which cover multiple nests
- 12 nests able to be followed





Last chick fledges

Egg laying

Camera results

- Colony never fully unoccupied
- Egg laying July 30th – Aug 13th
- Incubation c.66 days, but likely slightly over estimated
- 1 of 12 nests failed egg stage, 1 of 12 failed early chick stage



Acknowledgements

- Motuhara owners
- Chris Morrison for boat transport
- Levi for his help on the motu
- DOC CSP team, and especially Graeme Taylor and Dr Karen Middlemiss

