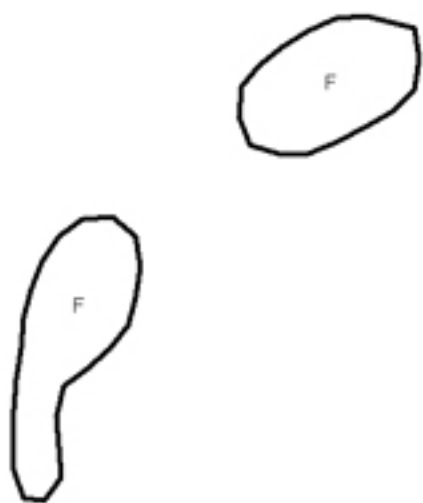
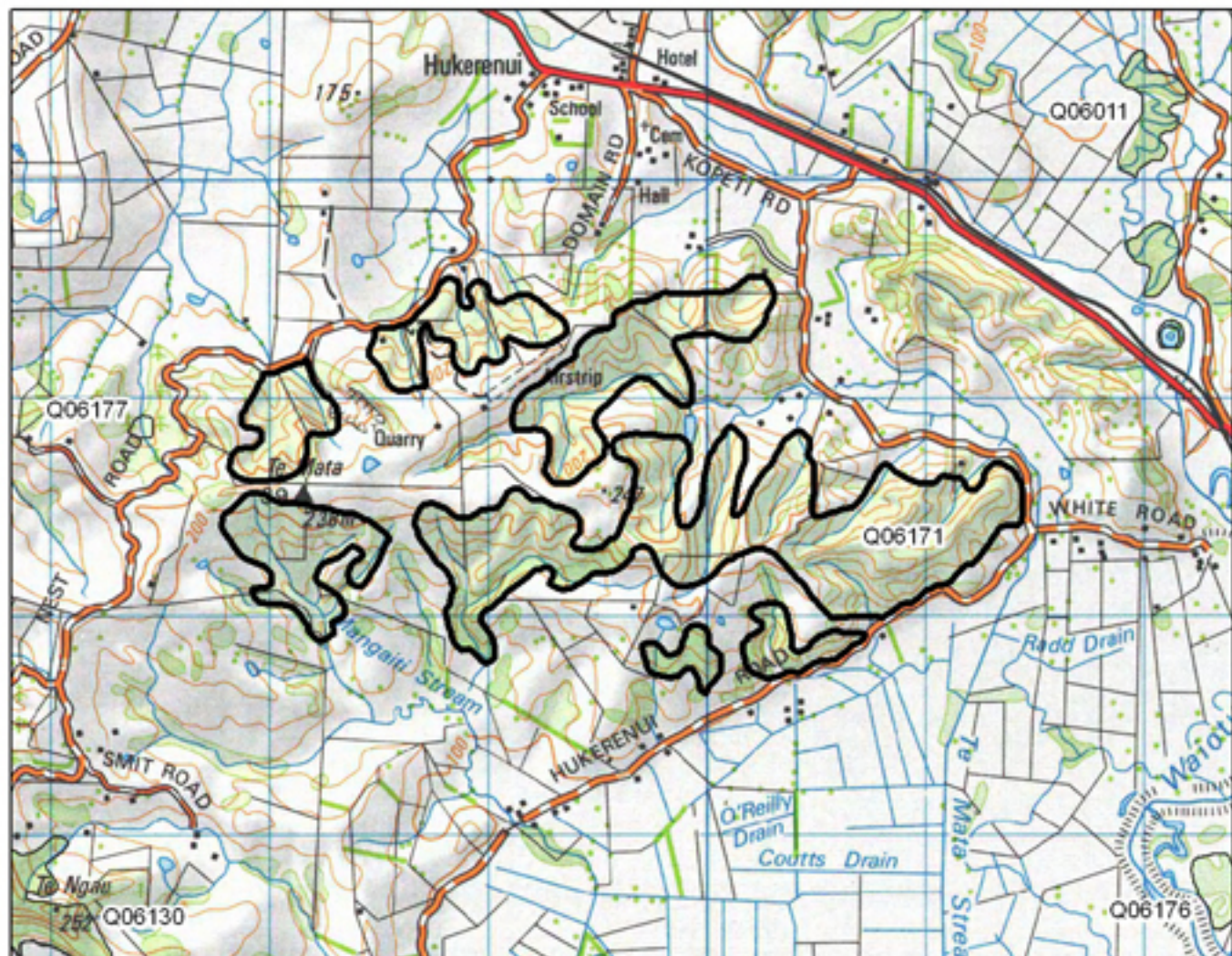


Q06170 Smithville Road Remnants

0 62.5 125 250 Metres

- S= Shrubland
- F= Forest
- W= Wetland
- E= Estuarine





Q06171 Hukerenui Road Shrublands

0 250 500 1,000 Metres

- S= Shrubland
- F= Forest
- W= Wetland
- E= Estuarine

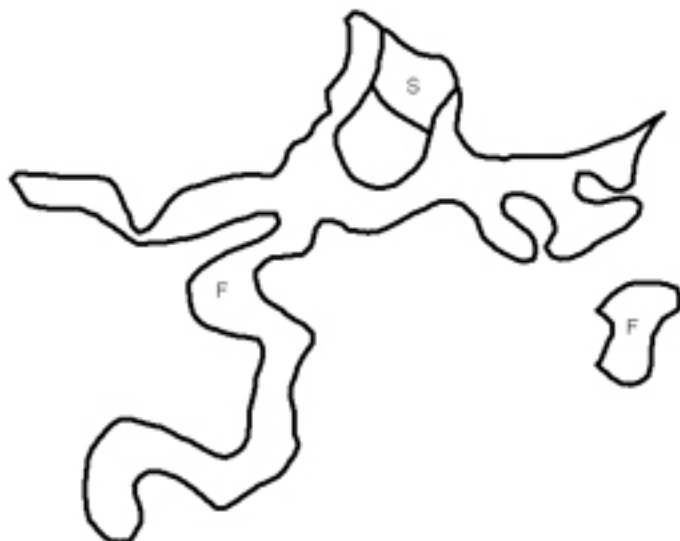


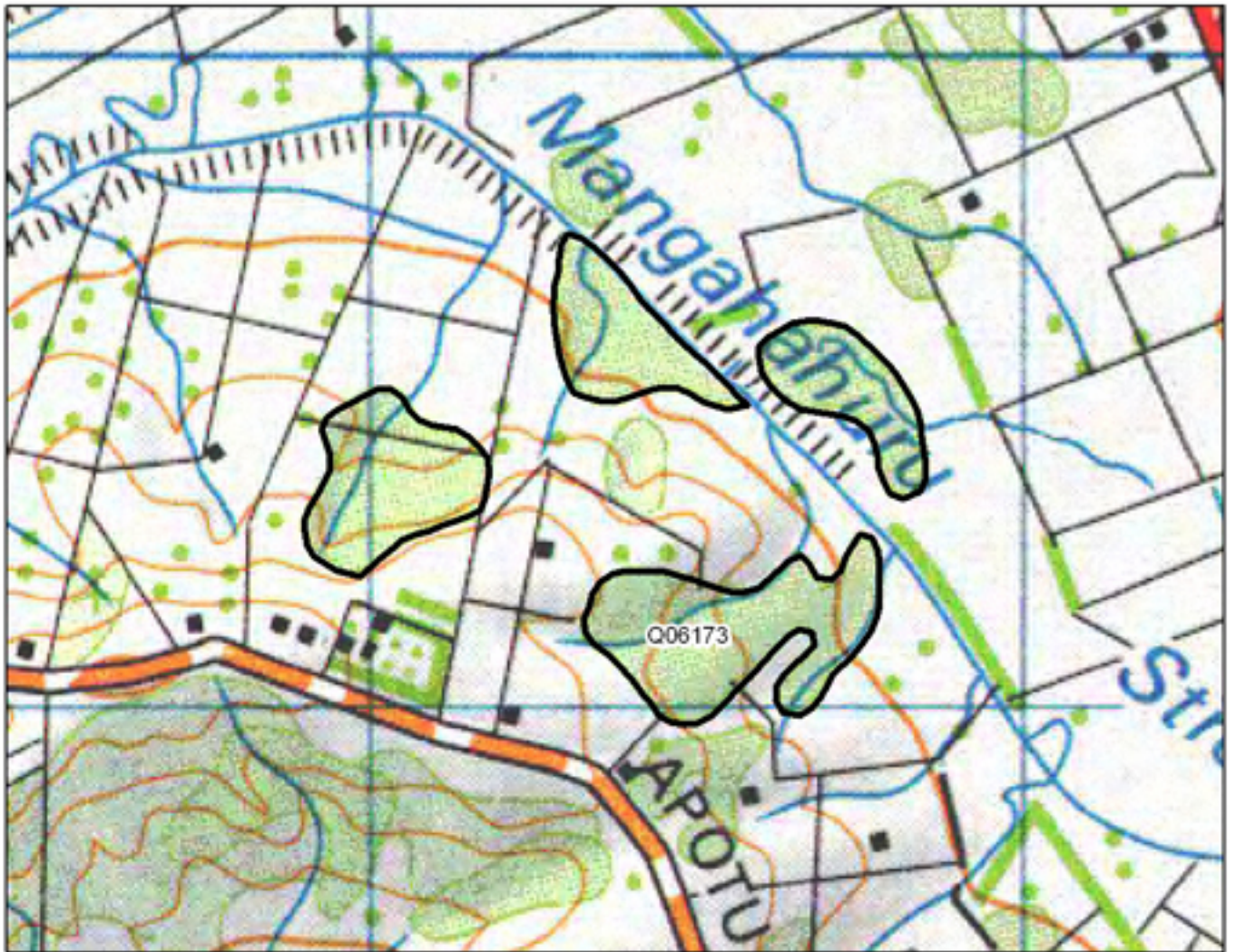


Q06172 Ngunguru Road Bush

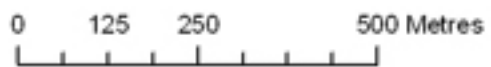


- S= Shrubland
- F= Forest
- W= Wetland
- E= Estuarine

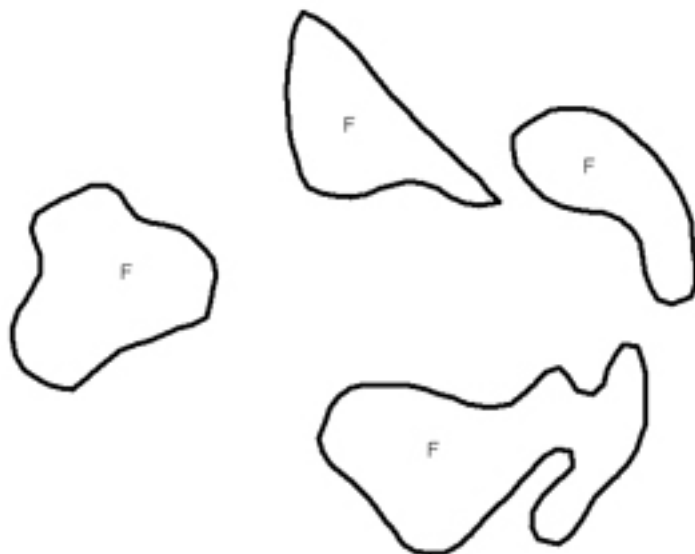


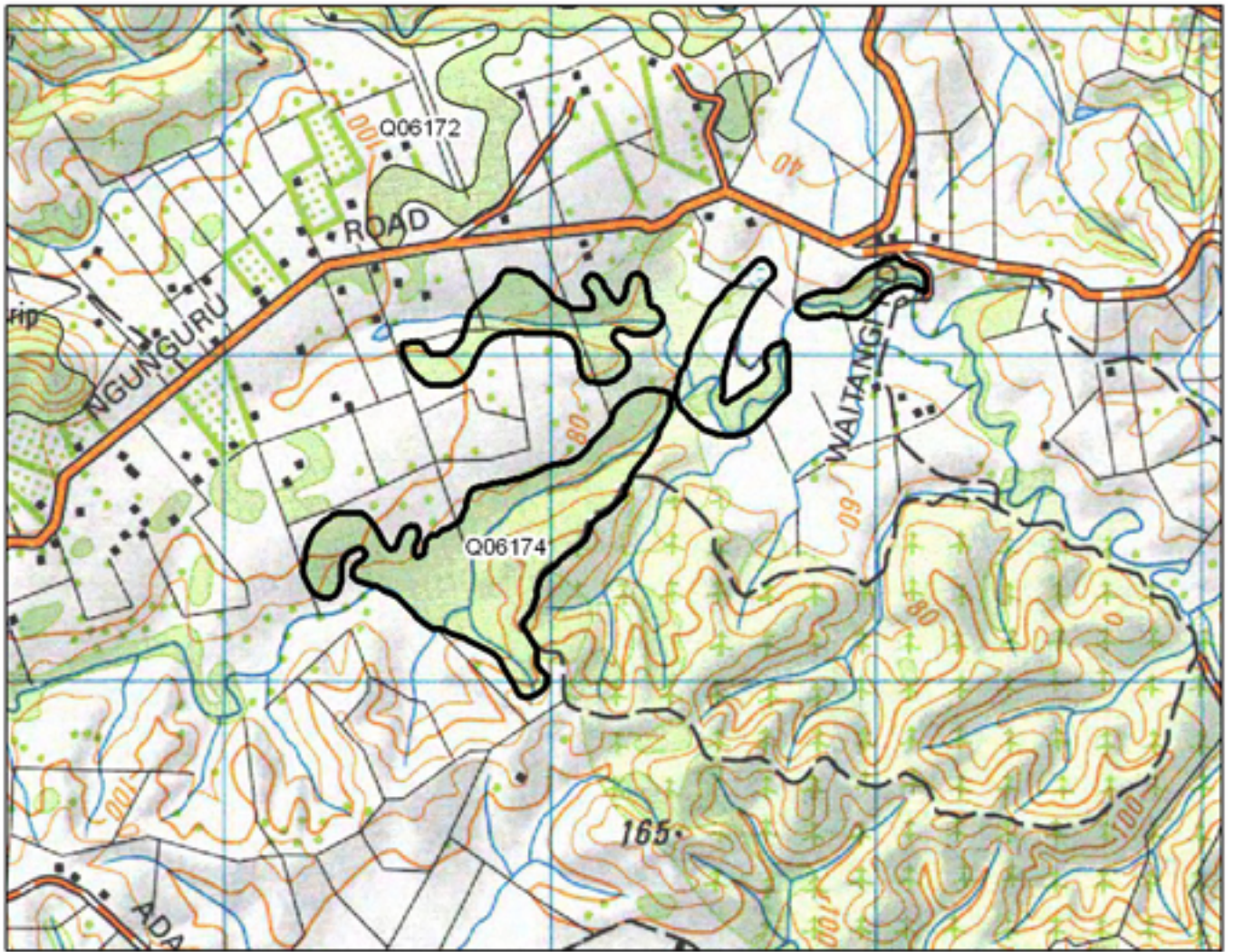


Q06173 Mangahahuru Bush



- S= Shrubland
- F= Forest
- W= Wetland
- E= Estuarine

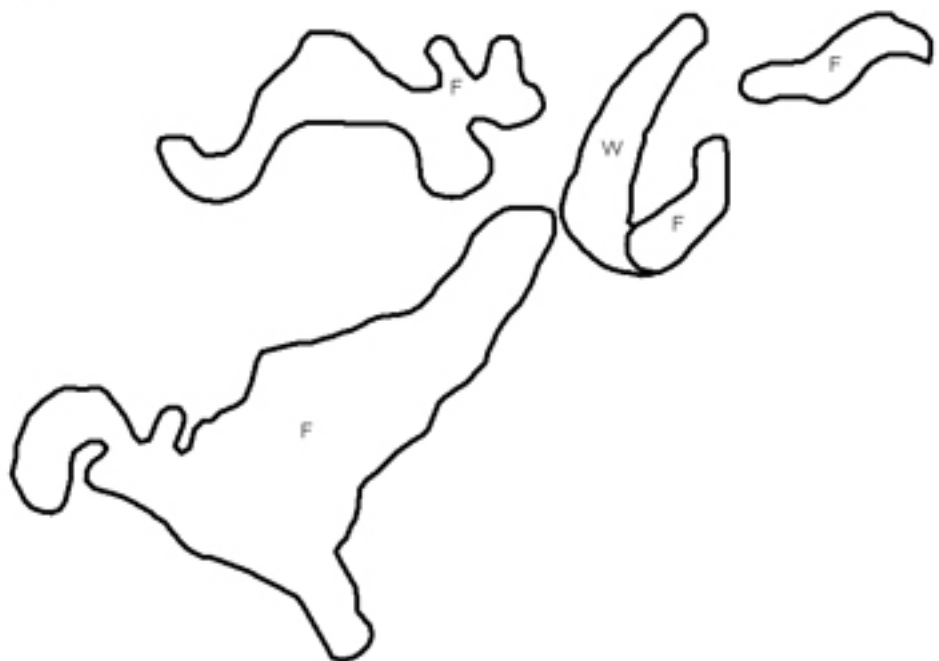




Q06174 Waitangi River

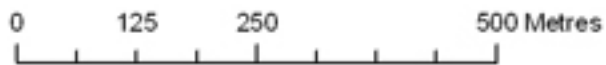
0 125 250 500 Metres

S= Shrubland
 F= Forest
 W= Wetland
 E= Estuarine



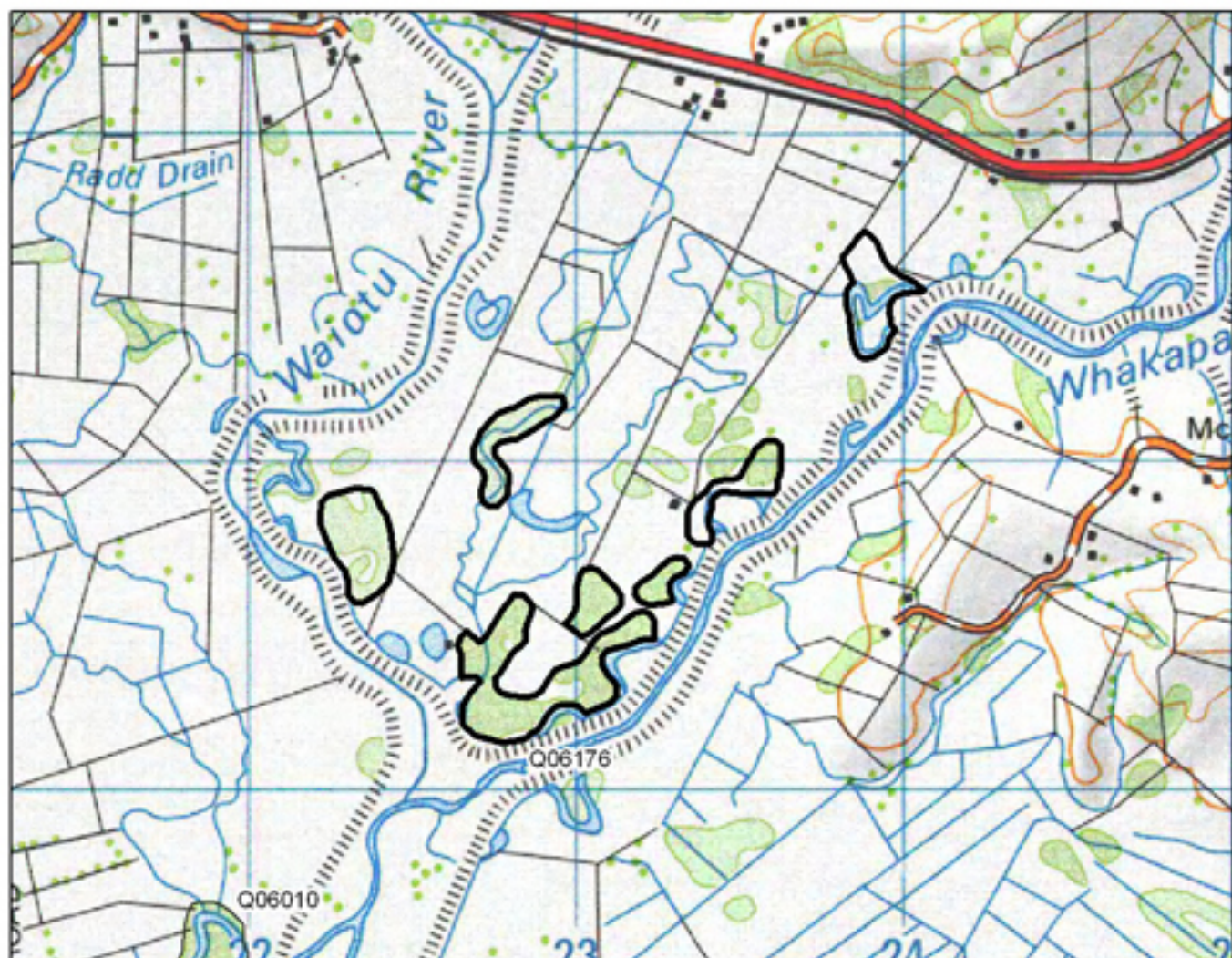


Q06175 Wairua River Oxbow



- S= Shrubland
- F= Forest
- W= Wetland
- E= Estuarine



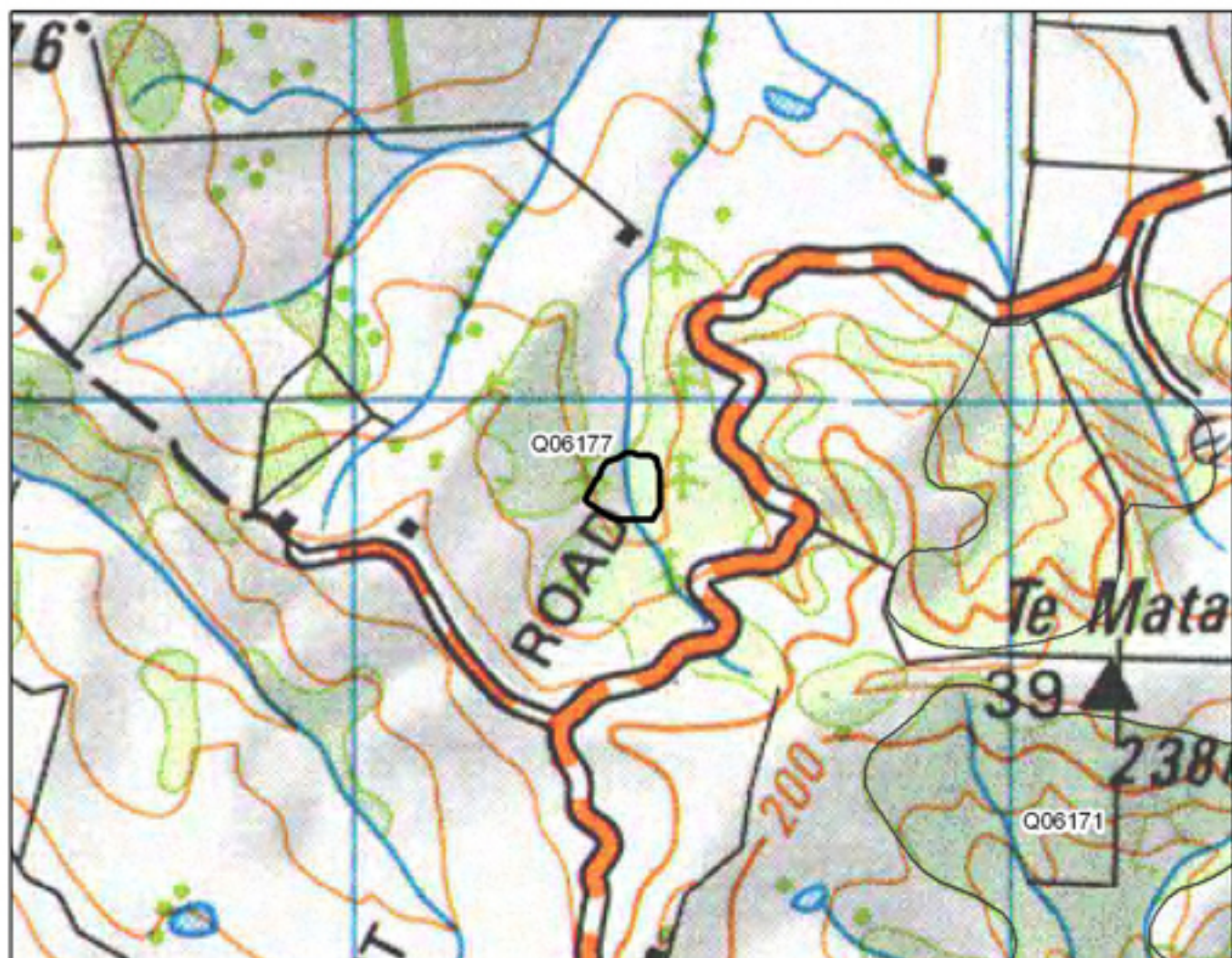


Q06176 Whakapara River Remnants

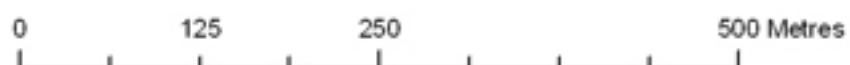
0 250 500 1,000 Metres

- S= Shrubland
- F= Forest
- W= Wetland
- E= Estuarine



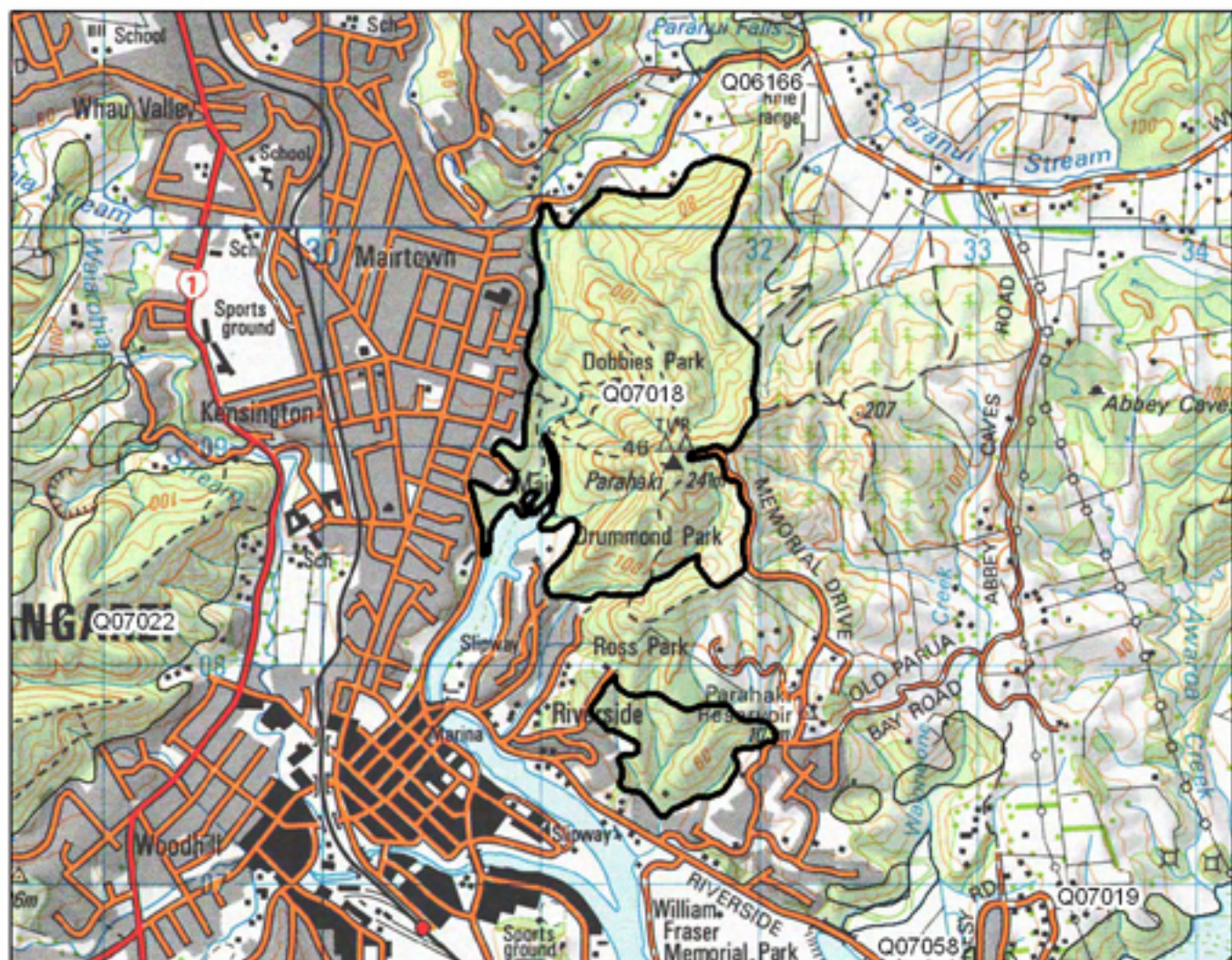


Q06177 Crows Nest Road Pond



- S= Shrubland
- F= Forest
- W= Wetland
- E= Estuarine



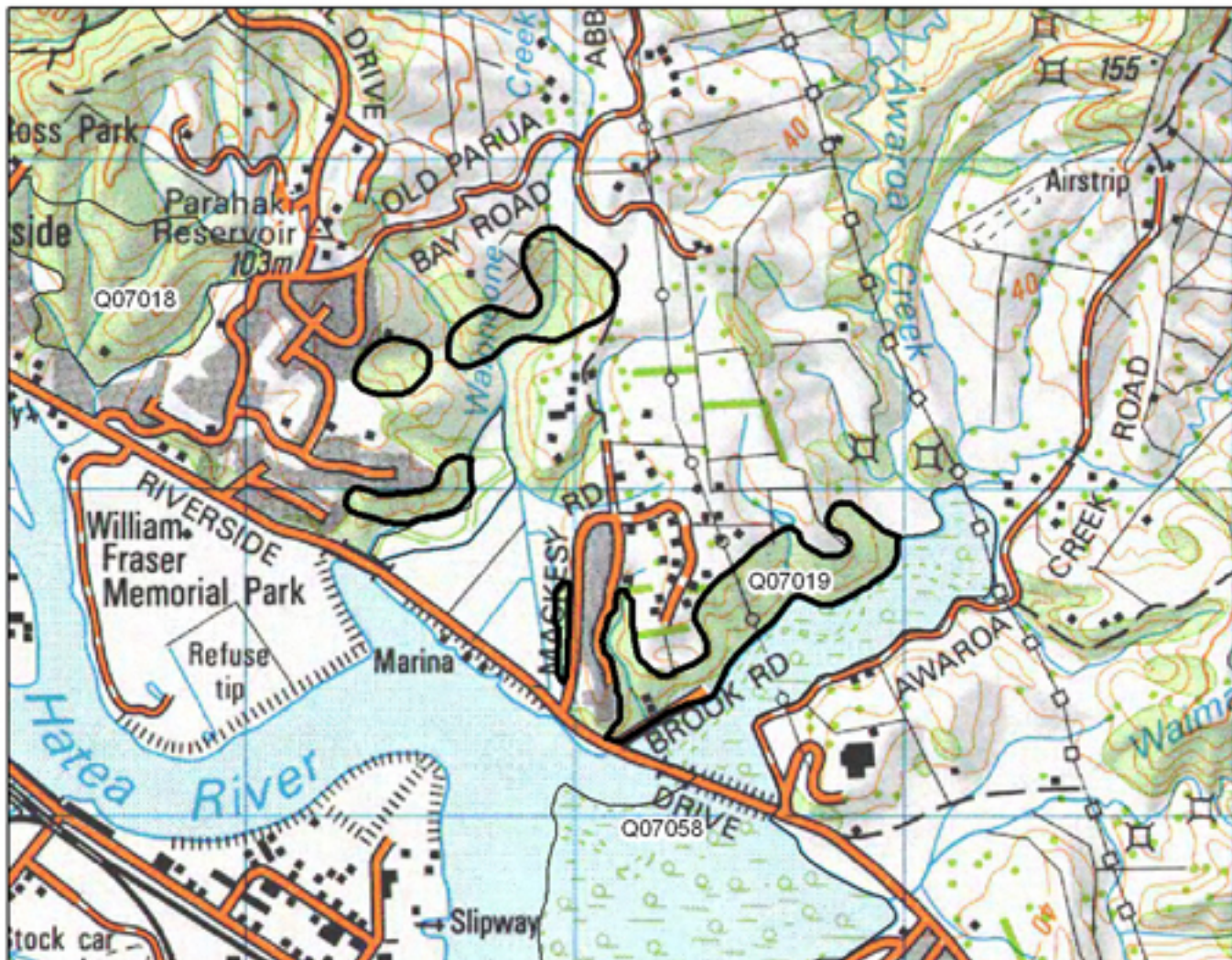


Q07018 Parahaki



- S= Shrubland
- F= Forest
- W= Wetland
- E= Estuarine





Q07019 Old Parua Bay Road Bush



- S= Shrubland
- F= Forest
- W= Wetland
- E= Estuarine

