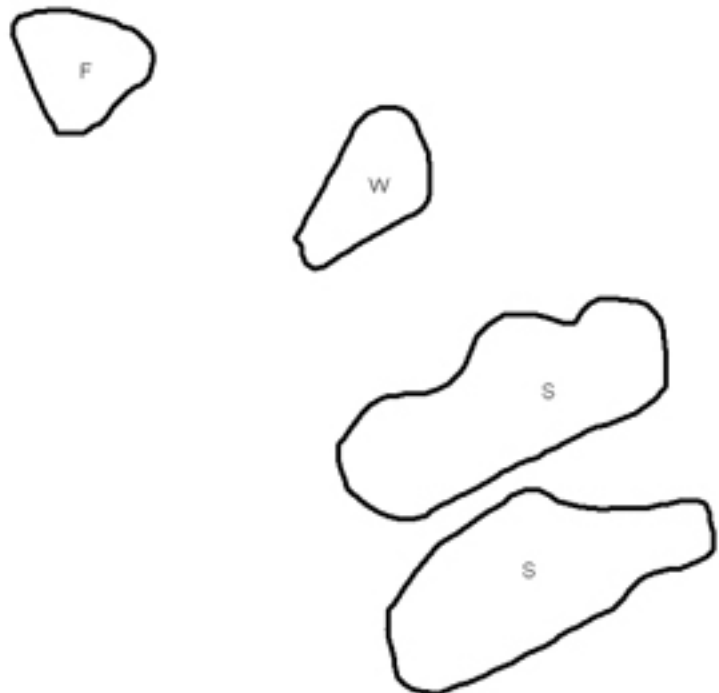


Q06016 Hikurangi Swamp Remnant



- S= Shrubland
- F= Forest
- W= Wetland
- E= Estuarine



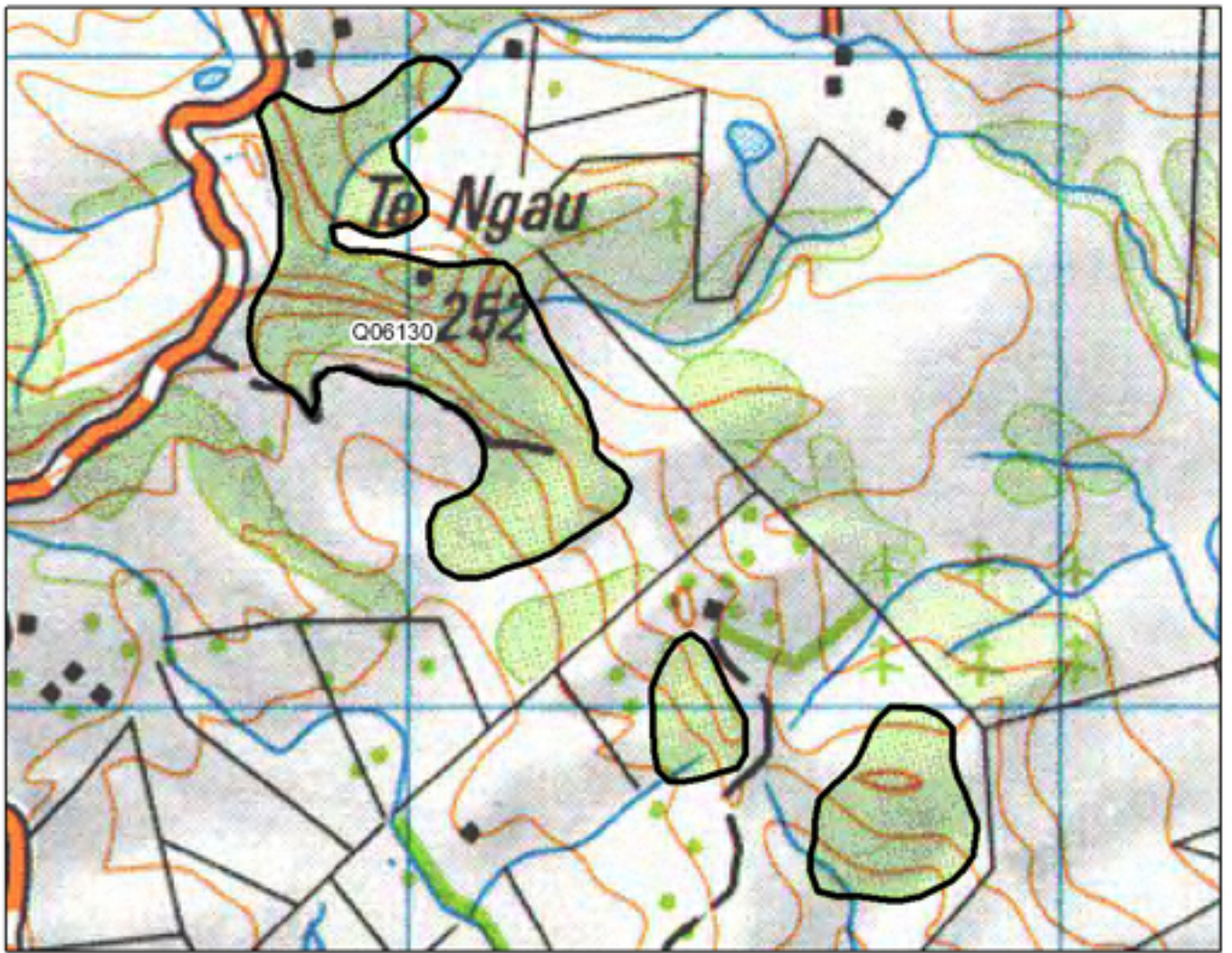


Q06024 Otonga Kahikatea Remnant



- S= Shrubland
- F= Forest
- W= Wetland
- E= Estuarine



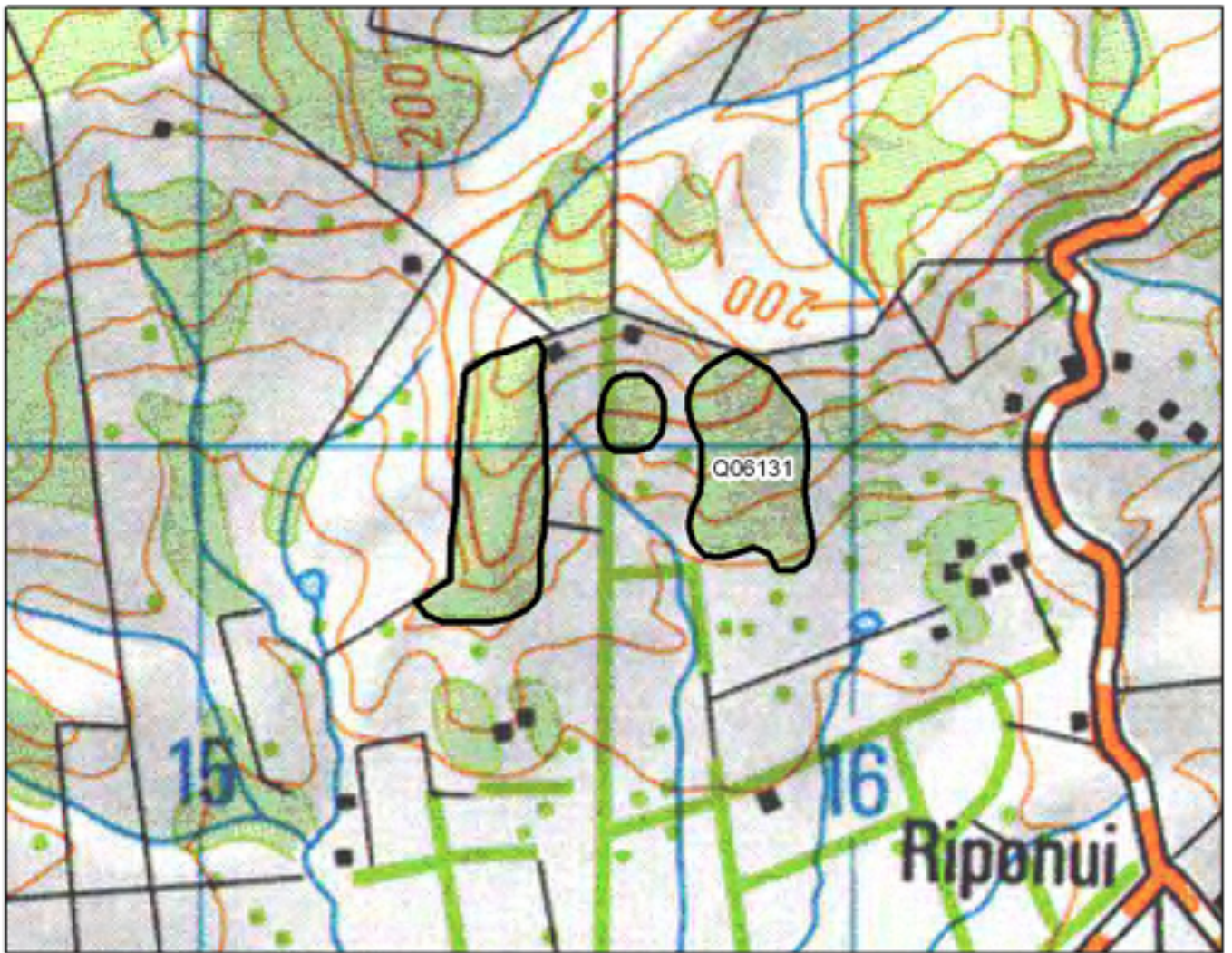


Q06130 Te Ngau Trig Bush

0 125 250 500 Metres

S= Shrubland
 F= Forest
 W= Wetland
 E= Estuarine





Q06131 Crows Nest Road Remnants



- S= Shrubland
- F= Forest
- W= Wetland
- E= Estuarine



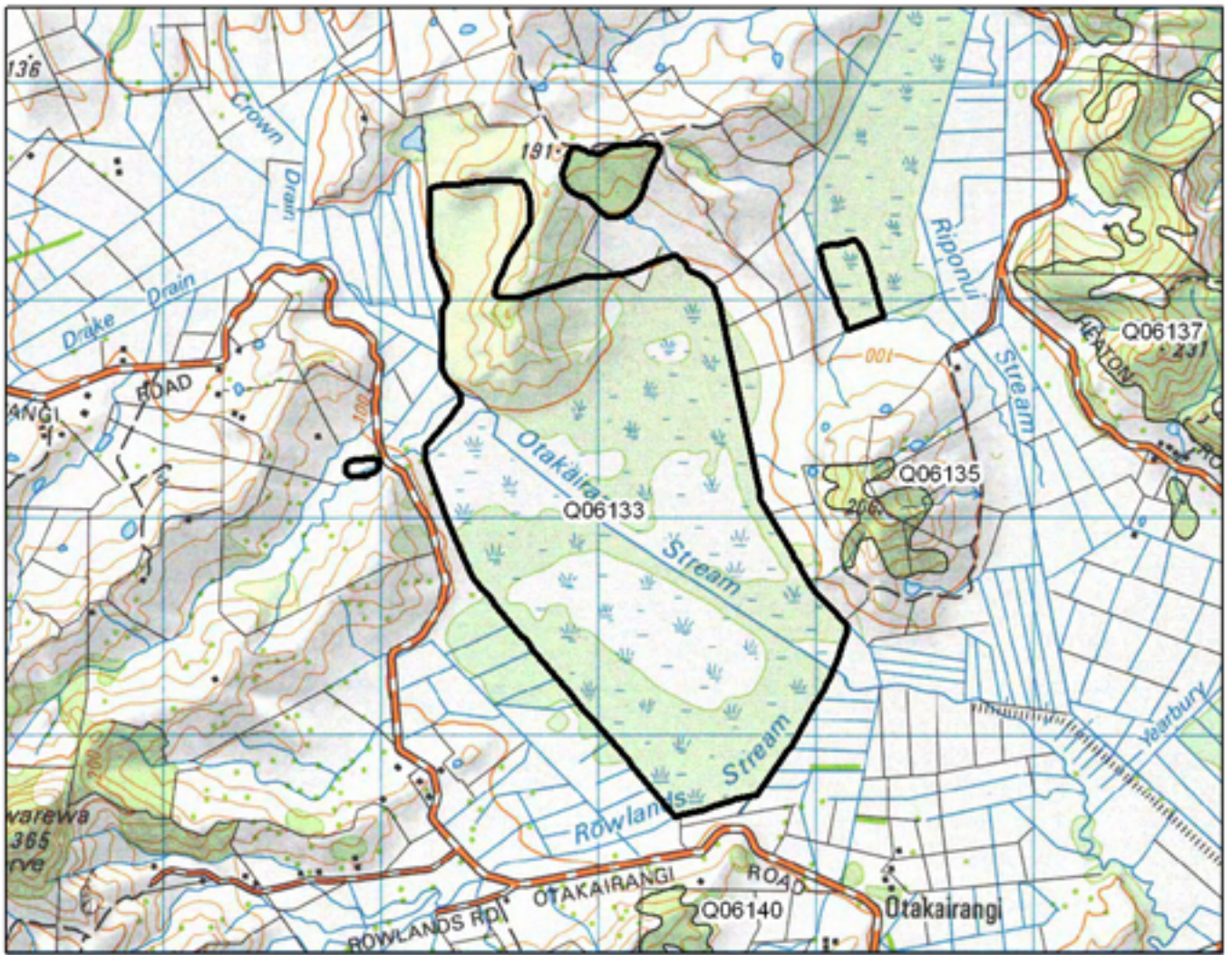


Q06132 Riponui Road Bush Remnants

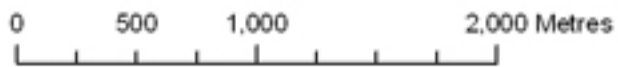
0 125 250 500 Metres

S= Shrubland
F= Forest
W= Wetland
E= Estuarine





Q06133 Otakairangi Peat Bog



- S= Shrubland
- F= Forest
- W= Wetland
- E= Estuarine



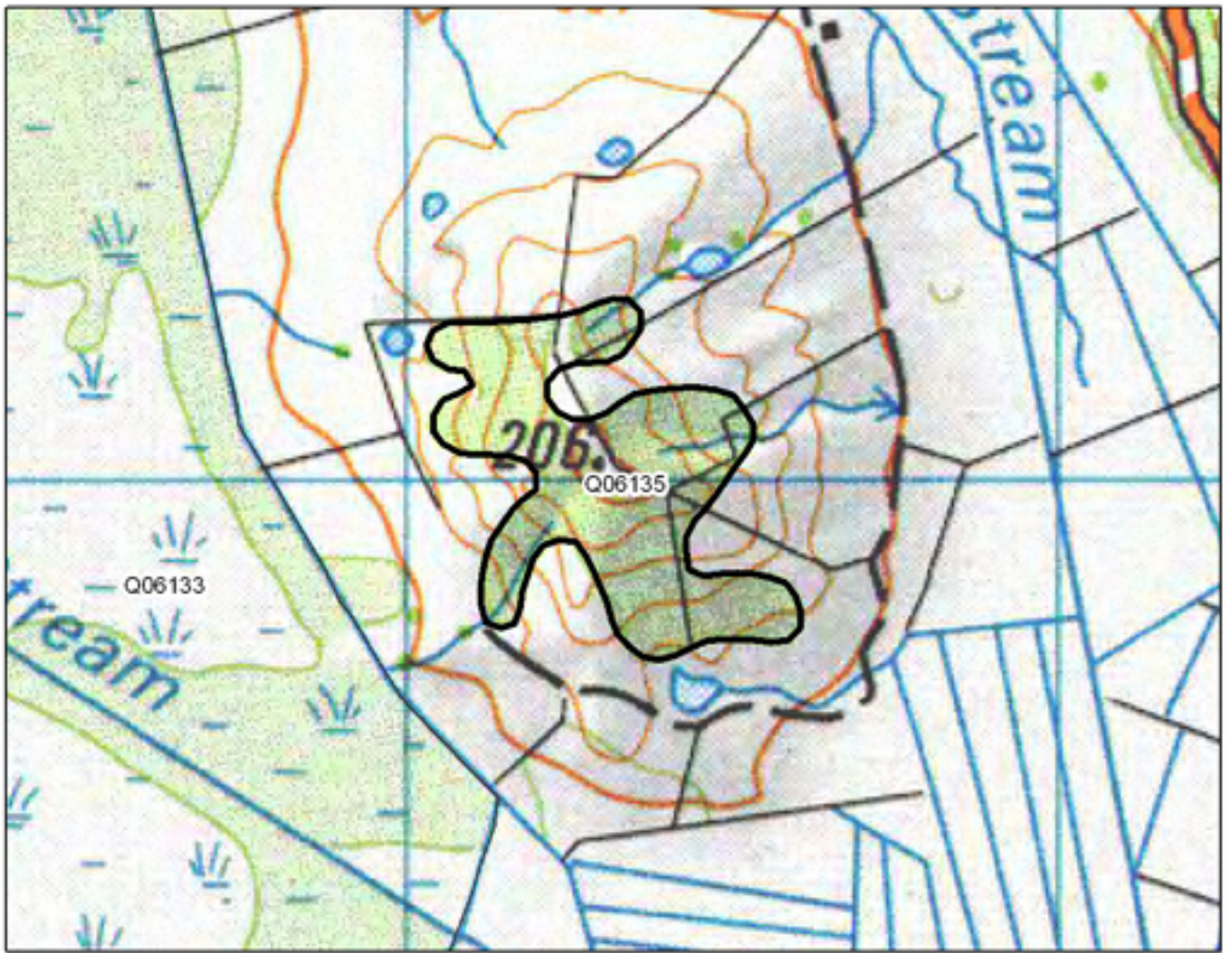


Q06134 Apotu Swamp Shrubland

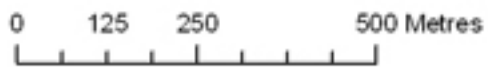


- S= Shrubland
- F= Forest
- W= Wetland
- E= Estuarine



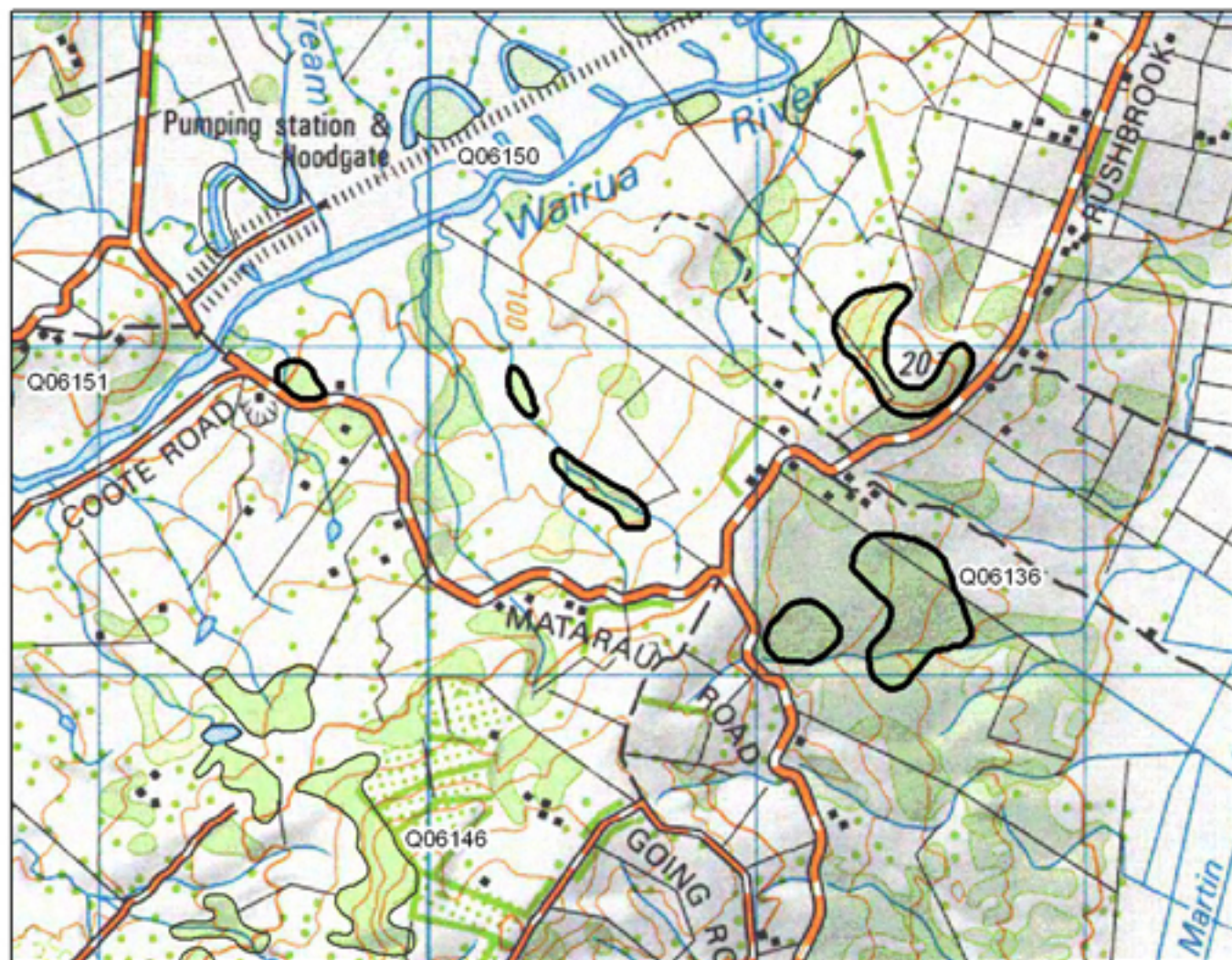


Q06135 206 Mound

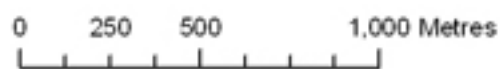


- S= Shrubland
- F= Forest
- W= Wetland
- E= Estuarine

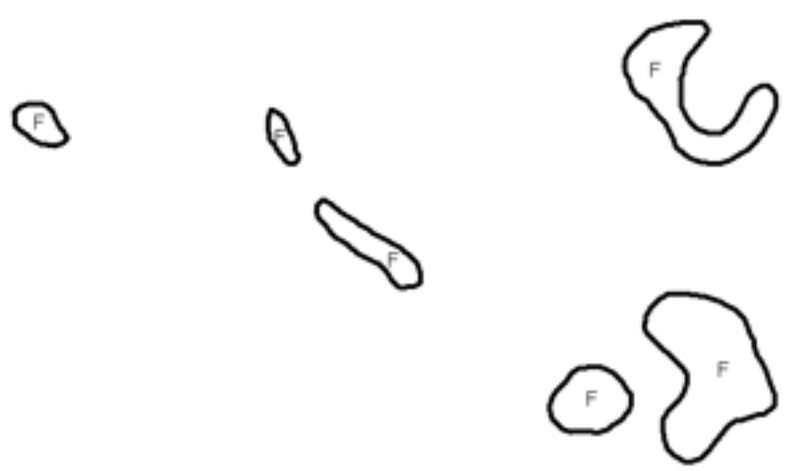


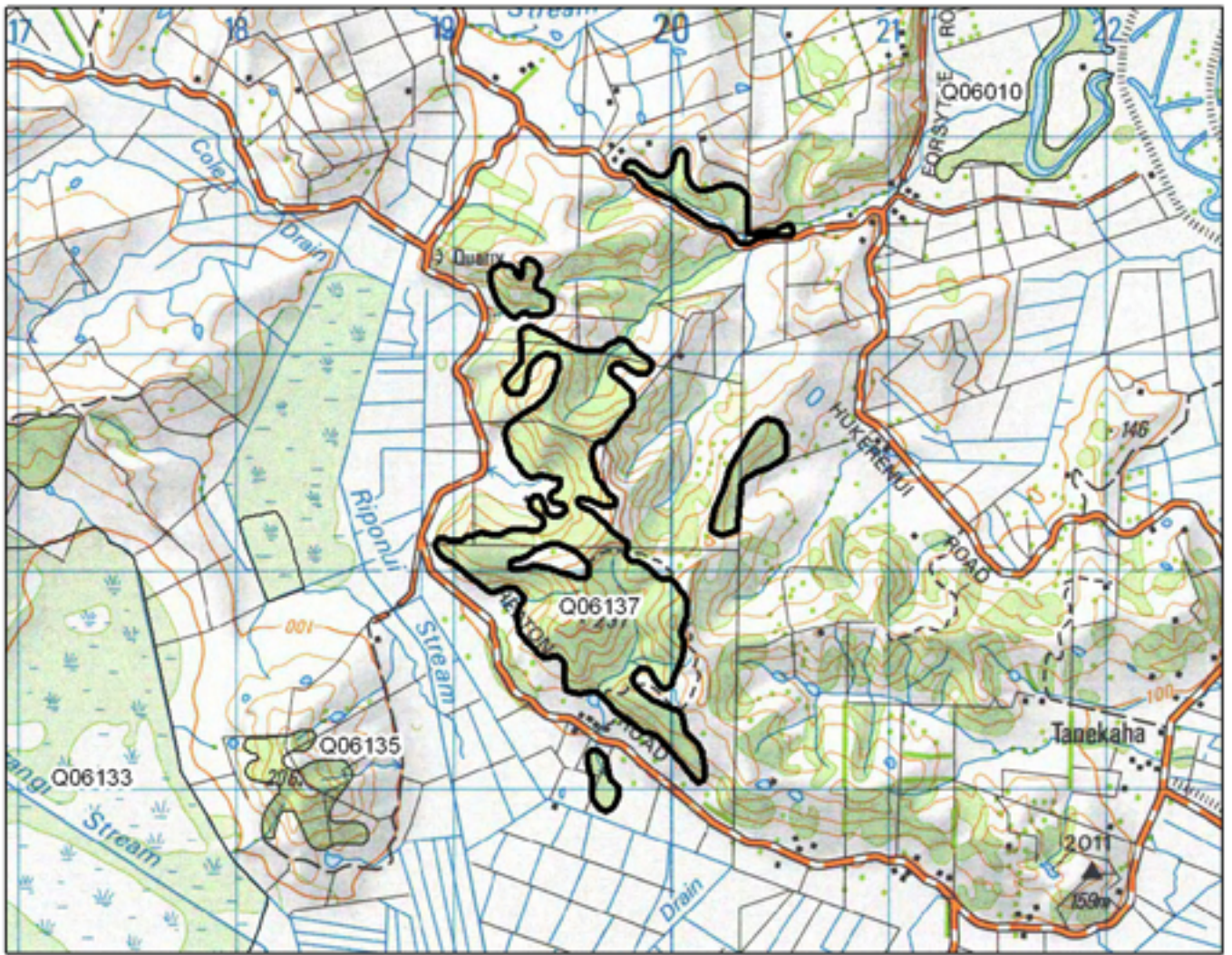


Q06136 Matarau Road Remnants



- S= Shrubland
- F= Forest
- W= Wetland
- E= Estuarine





Q06137 Heaton Road Bush

0 250 500 1,000 Metres

S= Shrubland
 F= Forest
 W= Wetland
 E= Estuarine

