

## 5. Summary and conclusions

The Protected Natural Areas network of the Tokatoka Ecological District is summarised in Table 4. Approximately 1% of the total land area is under some form of formal protection. This equates to 14.3% of the natural areas identified in this report. A list of ecological units recorded in the Tokatoka Ecological District is set out in Table 6 (p. 420) and a summary of site evaluations is given in Table 7 (p. 433)

TABLE 4. PROTECTED NATURAL AREAS NETWORK IN THE TOKATOKA ECOLOGICAL DISTRICT (AREAS GIVEN IN ha). Note: QEII = Queen Elizabeth II National Trust Open Space Covenant; SL = Stewardship Land; SR = Scenic Reserve; GPWM = Government Purpose Wildlife Management; CC = Conservation Covenant; KDC SR = Kaipara District Council Scenic Reserve; MS = Marginal Strip.

SITE NAME	SURVEY NO.	PRIVATE	DEPARTMENT OF CONSERVATION					DISTRICT COUNCIL	TOTAL AREA PROTECTED	TOTAL SITE AREA
		QEII	SL	SR	MS	GPWM	CC	KDC SR		
Manganui River Complex	P07/086				34.7	194.5			229.2	875.6
Curnow Road Gemstone Conservation Area	P07/090		46.8						46.8	47.5
Okahu Stream Forest and Surrounds-Wainui Road (Part of the Manganui River Complex)	P07/091	27.0							27.0	77.0
Okahu Stream Forest and Alluvial Remnants (Part of the Manganui River Complex)	P07/093	7.7							7.7	33.1
Turiwiri Scenic Reserve	P07/097							3.8	3.8	3.8
Hill Road Remnant	P07/100	14.0							14.0	24.8
Boar Stream Bush	P07/110	15.8							15.9	34.3
Young Road QEII Remnant	P07/116	4.7							4.7	7.7
Kiriopuni Station Road Covenant	P07/183	1.9							1.9	2.3
Whenuanui Scenic Reserve	P08/008							38.9	38.9	40.6
Tokatoka Scenic Reserve and Surrounds	P08/014		0.2	10.8					11.0	40.3
Simpkin Road Bush	P08/016	2.1							2.1	14.6
Dreadon Road Bush	P08/017	4.1							4.1	8.7
Tokatoka Road Hillslope	P08/030	5.2							5.2	9.5
Maungaraho Rock Scenic Reserve and Surrounds	P08/034							13.6	13.6	16.6
Montgomery Memorial Bush Scenic Reserve and Surrounds	P08/036			10.5					10.5	28.7

*Continued on next page*

Table 4 continued from previous page

SITE NAME	SURVEY NO.	PRIVATE	DEPARTMENT OF CONSERVATION					DISTRICT COUNCIL	TOTAL AREA PROTECTED	TOTAL SITE AREA
		QEII	SL	SR	MS	GPWM	CC	KDC SR		
Hamlyns Bush Scenic Reserve	P08/047							3.0	3.0	3.0
Newmans Bush	Q07/087	10.0							10.0	10.8
Bartlett Road Bush	Q07/091		1.6						1.6	88.4
Tauraroa Riverine Remnants	Q07/108				2.3				2.3	25.3
Omana Road Covenant	Q07/180	1.4							1.4	1.5
Pukekohe Covenants	Q08/001	7.6							7.6	8.5
Paiawa Road Forest (Part of Manganui River Complex)	Q08/002				1.4				1.4	42.5
Parahi Scenic Reserve and Surrounds	Q08/010		0.7	37.9					38.6	148.2
Paparoa/Oakleigh Road QEII Forest Remnants	Q08/012	8.0							8.0	11.6
Mid Ararua Road Bush Remnants	Q08/013				0.4				0.4	30.7
Parkers Road Bush	Q08/015	18.9	1.9						20.8	49.9
Birch Road QEII Forest Remnants	Q08/016	9.9							9.9	18.0
Poyner Road Remnant	Q08/017	3.5							3.5	3.7
Bull Road Bush	Q08/018				0.4				0.4	5.8
Manganui-Taylor's Road Bush and Surrounds	Q08/019	2.2							2.2	209.3
Mid Bull Road Bush Remnant	Q08/020	3.8							3.8	5.2
Lindquist Road Bush	Q08/021	4.9							4.9	131.9
Pukekohe Scenic Reserve and Surrounds	Q08/022	11.2		99.9					111.1	209.1
Cross Family Trust Covenant and Surrounds	Q08/025						3.2		3.2	12.6
McCarroll Gap Bush Remnants	Q08/026	12.5							12.5	88.7
Mareretu Bush Remnants	Q08/027	5.5							5.5	40.1
Smoky Hill Scenic Reserve and Surrounds	Q08/030			41.3					41.3	153.8
Lower Arcadia Road Remnants	Q08/031	3.7						10.9	14.6	87.3
Kauri Bushmans Memorial Scenic Reserve and Surrounds	Q08/041			1.5					1.5	27.4
Porter Road Hillslope Remnant	Q08/044	14.3							14.3	22.0
Gillon Road Bush	Q08/045	3.9							3.9	4.9
Golden Stairs Road Bush	Q08/051	25.7							25.7	29.4
Mason Road Covenant	Q08/055	2.3							2.3	2.5
<b>Total</b>		231.8	51.2	201.9	39.2	194.5	3.2	70.2	792.1	2737.2

## 5.1 PRIORITY NATURAL AREAS FOR PROTECTION IN THE TOKATOKA ECOLOGICAL DISTRICT

### 1. Habitat types which are nationally uncommon or regionally uncommon or poorly represented in the Tokatoka Ecological District, including:

- Riverine flood forest and freshwater wetlands- the best examples are within the Manganui River Complex (P07/086); 26.1% (229.2 ha) of this site (total area 875.6 ha) is formally protected.
- Swamp forest—tī kōuka-kahikatea forest (3.2 ha) at Berghans Bush and Surrounds (P08/015).
- Diverse broadleaf forest—Berghans Bush and Surrounds (P08/015) (54.58 ha excluding swamp forest).
- Regenerating podocarp forest—including Bull Road Bush (Q08/018) (5.8 ha)
- Old growth forest—Rehia Bush (45.39 ha), within Rehia Bush and Surrounds (P08/001).
- Freshwater wetlands—freshwater wetlands are scarce throughout the Ecological District. The majority of wetland habitat is associated with the Manganui River Complex (P07/086).
- Distinctive broadleaf vegetation types including:
  - nīkau-taraire, tī kōuka-kahikatea-nīkau, nīkau-pūriri-tōtara and kahikatea pūriri-totora forest—State Highway 12 Remnants (P08/002) (17.8 ha).
  - pūriri forest—Greenhill Road Pūriri Remnant (P08/004) (6.6 ha).
  - kōwhai-tōtara, karaka-kōwhai and karaka-kohekohe-taraire forest Pikiwahine Railway Bush Remnant (Q07/095) (7.6 ha).
- Additional areas supporting kauri forest—Tauraroa Bush (Q07/092) (32 ha) and Upper Mititai Road Bush (Q07/098) (72.6 ha).

### 2. Retention of the contiguity and consolidation of large habitats including linkages and corridors.

- Manganui River Complex (P07/086); 26.1% (229.2 ha) of this site (total area 875.6 ha) is formally protected.
- Hoanga Road Shrubland and Forest (P07/101) (the largest shrubland area in the Tokatoka Ecological District; 278.94 ha), this site has no formal protection.
- Parahi Scenic Reserve and Surrounds (Q08/010) (retention of eastern habitat); 26% (38.6 ha) of this site (total area 148.2 ha) is formally protected.
- Pukekohe Scenic Reserve and Surrounds (Q08/022) (retention of the contiguous shrubland area); 53.1% (111 ha) of this site (total area 209.1 ha) is formally protected.
- Smoky Hill Scenic Reserve (Q08/030) (retention of northern and southern areas); 26.8% (41.3 ha) of this site (total area 153.8 ha) is formally protected.

**3. Kiwi habitat. It is not known whether kiwi are still present within Tokatoka Ecological District. Excluding habitats that are already under some form of protection, the 1992/93 DOC Northland kiwi survey recorded kiwi at the following sites:**

- Maungatawhiri Forest Remnant (P07/096) (reported)—32.4 ha
- Hoanga Road Shrubland and Forest (P07/101) (reported)—88.4 ha
- Girls High School Road Bush (P07/112) (recorded)—11.1 ha
- Berghans Bush and Surrounds (P08/015) (recorded)—17.8 ha
- Waiotira Road Bush (Q07/086) (reported)—291.5 ha
- Bartlett Road Bush (Q07/091) (recorded)—34.1 ha
- Pikiwahine Bush Remnants (Q07/094) (reported, northern remnant)—72 ha

Subsequent work may show that other areas may have important values that also warrant protection.

## 5.2 THREATENED LAND ENVIRONMENTS OF TOKATOKA ECOLOGICAL DISTRICT

Land Environments of New Zealand (LENZ) is an environmental classification system that uses modelling techniques to classify New Zealand into broadly similar environments based on climatic factors, landform and soil factors, and the distribution of species. The Threatened Environment Classification is a combination of three national databases: Land Environments of New Zealand (LENZ), the Land Cover Database 2 (LCDB2), and Protected Areas of New Zealand (PANZ). The classification divides New Zealand into six categories of 'threatened environments'. Land environments are assigned one of six threat categories on the basis of past habitat loss (percentage indigenous cover remaining) and current legal protection (Walker et al. 2007).

Within the natural areas defined in the Tokatoka Ecological District, 52.4 ha or 0.9% are Acutely Threatened; 1228.3 ha or 22.3% are Chronically Threatened; 1489.8 ha or 27.1% are At Risk; 2408.9 ha or 43.8% are Critically Underprotected; 0.18 ha or 0.003% are Underprotected and 308.3 ha or 5.6% are Less Reduced and Better Protected.

Table 5 lists the area (in ha) of LENZ Level IV environments within Tokatoka PNA sites and their respective threat categories.

*Please note that LENZ areas (hectares) may differ from PNA site areas due to calculation methods. The LENZ areas are of lesser accuracy.*

Figure 3 (p. 419) shows the threatened land environments of the Tokatoka Ecological District, and Table 6 (p. 420) lists the Ecological Units recorded in the District

TABLE 5. AREA (ha) OF LENZ LEVEL IV ENVIRONMENTS WITHIN TOKATOKA PNA SITES AND THEIR RESPECTIVE THREAT CATEGORIES.

PNA SITE NUMBER	CRITERIA	THREATENED ENVIRONMENT	LENZ LEVEL 4	TOTAL AREA (HA)
P07/020	>30% left and <10% protected	Critically Underprotected	A6.1a	9.3
			A6.1c	17.0
		Critically Underprotected Total		26.3
<b>Total LENZ</b>				<b>26.3</b>
P07/086	<10% indigenous cover left	Acutely Threatened	A5.1b	4.5
		Acutely Threatened Total		4.5
	10-20% left	Chronically Threatened	A5.2a	0.9
			G3.1b	617.2
		Chronically Threatened Total		618.1
	20-30% left	At Risk	A6.1b	94.3
		At Risk Total		94.3
>30% left and <10% protected	Critically Underprotected	A6.1a	29.3	
		A6.1c	118.8	
<b>Total LENZ</b>		Critically Underprotected Total		<b>148.1</b>
<b>Total LENZ</b>				<b>865.0</b>
P07/087	>30% left and <10% protected	Critically Underprotected	A6.1c	12.7
		Critically Underprotected Total		12.7
<b>Total LENZ</b>				<b>12.7</b>
P07/088	20-30% left	At Risk	A6.1b	2.3
		At Risk Total		2.3
<b>Total LENZ</b>				<b>2.3</b>
P07/089	>30% left and <10% protected	Critically Underprotected	A6.1c	23.4
		Critically Underprotected Total		23.4
<b>Total LENZ</b>				<b>23.4</b>
P07/090	20-30% left	At Risk	A6.1b	47.5
		At Risk Total		47.5
<b>Total LENZ</b>				<b>47.5</b>
P07/091	10-20% left	Chronically Threatened	A5.2a	0.5
			G3.1b	30.3
		Chronically Threatened Total		30.8
	20-30% left	At Risk	A6.1b	16.0
		At Risk Total		16.0
	>30% left and <10% protected	Critically Underprotected	A6.1c	30.2
		Critically Underprotected Total		30.2
<b>Total LENZ</b>				<b>77.0</b>
P07/092	10-20% left	Chronically Threatened	A5.2a	1.6
		Chronically Threatened Total		1.6
	20-30% left	At Risk	A6.1b	6.1
		At Risk Total		6.1
	>30% left and <10% protected	Critically Underprotected	A6.1c	19.2
Critically Underprotected Total			19.2	
<b>Total LENZ</b>				<b>26.9</b>
P07/093	10-20% left	Chronically Threatened	A5.2a	1.0
			G3.1b	14.6
		Chronically Threatened Total		15.5
	20-30% left	At Risk	A6.1b	12.5
		At Risk Total		12.5
	>30% left and <10% protected	Critically Underprotected	A6.1c	5.1
Critically Underprotected Total			5.1	
<b>Total LENZ</b>				<b>33.1</b>

*Continued on the next page*

Table 5 continued from the previous page

PNA SITE NUMBER	CRITERIA	THREATENED ENVIRONMENT	LENZ LEVEL 4	TOTAL AREA (ha)
P07/094	10-20% left	Chronically Threatened	A5.2a	0.1
			G3.1b	1.9
		Chronically Threatened Total		2.0
	20-30% left	At Risk	A6.1b	1.2
		At Risk Total		1.2
	>30% left and <10% protected	Critically Underprotected	A6.1c	33.8
	Critically Underprotected Total		33.8	
<b>Total LENZ</b>				<b>37.0</b>
P07/095	10-20% left	Chronically Threatened	G3.1b	0.6
		Chronically Threatened Total		0.6
<b>Total LENZ</b>				<b>0.6</b>
P07/096	10-20% left	Chronically Threatened	G3.1b	0.4
		Chronically Threatened Total		0.4
	20-30% left	At Risk	A6.1b	8.6
		At Risk Total		8.6
	>30% left and <10% protected	Critically Underprotected	A6.1c	8.8
		Critically Underprotected Total		8.8
<b>Total LENZ</b>				<b>17.8</b>
P07/097	10-20% left	Chronically Threatened	A6.1d	3.8
		Chronically Threatened Total		3.8
<b>Total LENZ</b>				<b>3.8</b>
P07/098	20-30% left	At Risk	A6.1b	5.6
		At Risk Total		5.6
<b>Total LENZ</b>				<b>5.6</b>
P07/098a	10-20% left	Chronically Threatened	A6.1d	1.7
		Chronically Threatened Total		1.7
	20-30% left	At Risk	A6.1b	3.4
		At Risk Total		3.4
<b>Total LENZ</b>				<b>5.1</b>
P07/099	20-30% left	At Risk	A6.1b	8.5
		At Risk Total		8.5
	>30% left and <10% protected	Critically Underprotected	A6.1c	0.2
		Critically Underprotected Total		0.2
<b>Total LENZ</b>				<b>8.7</b>
P07/100	20-30% left	At Risk	A6.1b	0.8
		At Risk Total		0.8
	>30% left and <10% protected	Critically Underprotected	A6.1c	24.0
		Critically Underprotected Total		24.0
<b>Total LENZ</b>				<b>24.8</b>
P07/101	10-20% left	Chronically Threatened	A5.2a	10.0
			A7.1a	1.6
			G3.1b	7.2
		Chronically Threatened Total		18.7
	20-30% left	At Risk	A6.1b	14.0
		At Risk Total		14.0
	<10% indigenous cover left	Acutely Threatened	A5.1b	9.6
		Acutely Threatened Total		9.6
	>30% left and <10% protected	Critically Underprotected	A6.1a	24.9
			A6.1c	148.4
		Critically Underprotected Total		173.3
	>30% left and >20% protected	Less reduced and better protected	D1.1b	75.7
		Less reduced and better protected Total		75.7
<b>Total LENZ</b>				<b>291.5</b>

Continued on the next page

Table 5 continued from the previous page

PNA SITE NUMBER	CRITERIA	THREATENED ENVIRONMENT	LENZ LEVEL 4	TOTAL AREA (ha)
P07/102	10-20% left	Chronically Threatened	G3.1b	0.7
		Chronically Threatened Total		0.7
	>30% left and <10% protected	Critically Underprotected	A6.1a	0.7
			A6.1c	11.4
		Critically Underprotected Total		12.1
<b>Total LENZ</b>			<b>12.8</b>	
P07/103	<10% indigenous cover left	Acutely Threatened	A5.1b	1.4
		Acutely Threatened Total		1.4
	>30% left and <10% protected	Critically Underprotected	A6.1c	0.7
				0.7
		Critically Underprotected Total		0.7
<b>Total LENZ</b>			<b>2.5</b>	
P07/104	>30% left and <10% protected	Critically Underprotected	A6.1c	5.6
		Critically Underprotected Total		5.6
		<b>Total LENZ</b>		<b>5.6</b>
P07/105	>30% left and <10% protected	Critically Underprotected	A6.1c	10.9
		Critically Underprotected Total		10.9
		<b>Total LENZ</b>		<b>11.0</b>
P07/106	>30% left and <10% protected	Critically Underprotected	A6.1c	18.0
		Critically Underprotected Total		18.0
		<b>Total LENZ</b>		<b>18.0</b>
P07/107	<10% indigenous cover left	Acutely Threatened	A5.1b	0.3
		Acutely Threatened Total		0.3
	10-20% left	Chronically Threatened	G3.1b	0.3
		Chronically Threatened Total		0.3
	>30% left and <10% protected	Critically Underprotected	A6.1c	13.1
				13.1
		Critically Underprotected Total		13.7
<b>Total LENZ</b>			<b>13.7</b>	
P07/108	>30% left and <10% protected	Critically Underprotected	A6.1c	31.9
		Critically Underprotected Total		31.9
		<b>Total LENZ</b>		<b>31.9</b>
P07/109	10-20% left	Chronically Threatened	G3.1b	0.3
		Chronically Threatened Total		0.3
	>30% left and <10% protected	Critically Underprotected	A6.1a	19.4
			A6.1c	7.1
		Critically Underprotected Total		26.5
		<b>Total LENZ</b>		<b>26.8</b>
P07/110	10-20% left	Chronically Threatened	G3.1b	1.4
		Chronically Threatened Total		1.4
	>30% left and <10% protected	Critically Underprotected	A6.1a	8.4
			A6.1c	24.6
		Critically Underprotected Total		32.9
		<b>Total LENZ</b>		<b>34.3</b>
P07/112	20-30% left	At Risk	A6.1b	1.4
		At Risk Total		1.4
	>30% left and <10% protected	Critically Underprotected	A6.1a	3.0
			A6.1c	29.6
		Critically Underprotected Total		32.6
<b>Total LENZ</b>			<b>34.1</b>	
P07/113	20-30% left	At Risk	A6.1b	0.7
		At Risk Total		0.7
	>30% left and <10% protected	Critically Underprotected	A6.1c	3.8
				3.8
		Critically Underprotected Total		3.8
<b>Total LENZ</b>			<b>4.5</b>	

Continued on the next page

Table 5 continued from the previous page

PNA SITE NUMBER	CRITERIA	THREATENED ENVIRONMENT	LENZ LEVEL 4	TOTAL AREA (ha)
P07/114	>30% left and <10% protected	Critically Underprotected Critically Underprotected Total	A6.1a	4.0 4.0
<b>Total LENZ</b>				<b>4.0</b>
P07/116	>30% left and <10% protected	Critically Underprotected Critically Underprotected Total	A6.1c	7.7 7.7
<b>Total LENZ</b>				<b>7.7</b>
P07/117	<10% indigenous cover left	Acutely Threatened	A5.1b A5.1c	9.7 0.1
	10-20% left	Acutely Threatened Total Chronically Threatened Chronically Threatened Total	A5.2a	9.8 0.5 0.5
	20-30% left	At Risk At Risk Total	A6.1b	6.8 6.8
	>30% left and <10% protected	Critically Underprotected Critically Underprotected Total	A6.1a A6.1c	0.4 33.2 33.6
<b>Total LENZ</b>				<b>51.7</b>
P07/118	>30% left and <10% protected	Critically Underprotected Critically Underprotected Total	A6.1c	13.6 13.6
<b>Total LENZ</b>				<b>13.6</b>
P07/119	>30% left and <10% protected	Critically Underprotected Critically Underprotected Total	A6.1a A6.1c	1.6 5.1 6.7
<b>Total LENZ</b>				<b>6.8</b>
P07/183	>30% left and <10% protected	Critically Underprotected Critically Underprotected Total	A6.1a	2.3 2.3
<b>Total LENZ</b>				<b>2.3</b>
P08/001	20-30% left	At Risk At Risk Total	A6.1b	1.2 1.2
	>30% left and <10% protected	Critically Underprotected Critically Underprotected Total	A6.1a A6.1c	6.5 33.5 40.1
	>30% left and >20% protected	Less reduced and better protected Less reduced and better protected Total	D1.1b	29.4 29.4
<b>Total LENZ</b>				<b>70.7</b>
P08/002	10-20% left	Chronically Threatened Chronically Threatened Total	A6.1d	13.2 13.2
	>30% left and <10% protected	Critically Underprotected Critically Underprotected Total	A6.1a	4.4 4.4
<b>Total LENZ</b>				<b>17.7</b>
P08/003	>30% left and <10% protected	Critically Underprotected Critically Underprotected Total	A6.1a	15.3 15.3
<b>Total LENZ</b>				<b>15.3</b>
P08/004	10-20% left	Chronically Threatened Chronically Threatened Total	A6.1d	6.6 6.6
<b>Total LENZ</b>				<b>6.6</b>
P08/005	20-30% left	At Risk At Risk Total	A6.1b	9.9 9.9
<b>Total LENZ</b>				<b>9.9</b>
P08/006	10-20% left	Chronically Threatened Chronically Threatened Total	A6.1d	18.0 18.0
	20-30% left	At Risk At Risk Total	A6.1b	2.8 2.8
<b>Total LENZ</b>				<b>20.8</b>

Continued on the next page



Table 5 continued from the previous page

PNA SITE NUMBER	CRITERIA	THREATENED ENVIRONMENT	LENZ LEVEL 4	TOTAL AREA (ha)
P08/007	10-20% left	Chronically Threatened	A6.1d	5.5
		Chronically Threatened Total		5.5
<b>Total LENZ</b>				<b>5.5</b>
P08/008	<10% indigenous cover left	Acutely Threatened	A5.1b	5.8
		Acutely Threatened Total		5.8
	10-20% left	Chronically Threatened	A6.1d	34.8
		Chronically Threatened Total		34.8
<b>Total LENZ</b>				<b>40.6</b>
P08/009	10-20% left	Chronically Threatened	A6.1d	3.2
		Chronically Threatened Total		3.2
<b>Total LENZ</b>				<b>3.2</b>
P08/010	10-20% left	Chronically Threatened	A6.1d	6.4
		Chronically Threatened Total		6.4
<b>Total LENZ</b>				<b>6.4</b>
P08/011	10-20% left	Chronically Threatened	A6.1d	0.8
		Chronically Threatened Total		0.8
<b>Total LENZ</b>				<b>0.8</b>
P08/012	<10% indigenous cover left	Acutely Threatened	A5.1b	6.1
		Acutely Threatened Total		6.1
<b>Total LENZ</b>				<b>6.1</b>
P08/012a	<10% indigenous cover left	Acutely Threatened	A5.1b	0.7
		Acutely Threatened Total		0.7
	20-30% left	At Risk	A6.1b	3.5
		At Risk Total		3.5
<b>Total LENZ</b>				<b>4.2</b>
P08/013	10-20% left	Chronically Threatened	A6.1d	23.4
		Chronically Threatened Total		23.4
	20-30% left	At Risk	A6.1b	5.7
		At Risk Total		5.7
<b>Total LENZ</b>				<b>29.1</b>
P08/014	<10% indigenous cover left	Acutely Threatened	A5.1b	1.0
		Acutely Threatened Total		1.0
	10-20% left	Chronically Threatened	A6.1d	11.2
		Chronically Threatened Total		11.2
	20-30% left	At Risk	A6.1b	24.5
		At Risk Total		24.5
	>30% left and <10% protected	Critically Underprotected	A6.1c	3.6
		Critically Underprotected Total		3.6
<b>Total LENZ</b>				<b>40.3</b>
P08/015	<10% indigenous cover left	Acutely Threatened	A5.1b	3.1
		Acutely Threatened Total		3.1
	10-20% left	Chronically Threatened	A6.1d	7.6
		Chronically Threatened Total		7.6
	20-30% left	At Risk	A6.1b	34.0
		At Risk Total		34.0
	>30% left and <10% protected	Critically Underprotected	A6.1c	27.3
		Critically Underprotected Total		27.3
<b>Total LENZ</b>				<b>72.0</b>
P08/016	10-20% left	Chronically Threatened	A6.1d	0.4
		Chronically Threatened Total		0.4
	20-30% left	At Risk	A6.1b	14.2
		At Risk Total		14.2
<b>Total LENZ</b>				<b>14.6</b>

Continued on the next page

Table 5 continued from the previous page

PNA SITE NUMBER	CRITERIA	THREATENED ENVIRONMENT	LENZ LEVEL 4	TOTAL AREA (ha)
P08/017	10-20% left	Chronically Threatened	A6.1d	8.5
		Chronically Threatened Total		8.5
	20-30% left	At Risk	A6.1b	0.2
		At Risk Total		0.2
	<b>Total LENZ</b>			<b>8.7</b>
P08/018	<10% indigenous cover left	Acutely Threatened	A5.1b	3.7
		Acutely Threatened Total		3.7
	10-20% left	Chronically Threatened	A6.1d	15.9
		Chronically Threatened Total	G3.1b	3.1
	>30% left and <10% protected	Critically Underprotected	A6.1a	6.8
		Critically Underprotected Total	A6.1c	0.2
		Critically Underprotected Total		7.0
<b>Total LENZ</b>			<b>29.7</b>	
P08/019	>30% left and <10% protected	Critically Underprotected	A6.1a	2.7
		Critically Underprotected Total	A6.1c	34.6
		Critically Underprotected Total		37.3
<b>Total LENZ</b>			<b>37.3</b>	
P08/020	10-20% left	Chronically Threatened	G3.1b	3.7
		Chronically Threatened Total		3.7
	20-30% left	At Risk	A6.1b	0.4
		At Risk Total		0.4
	>30% left and <10% protected	Critically Underprotected	A6.1a	0.8
<b>Total LENZ</b>			<b>4.8</b>	
P08/021	20-30% left	At Risk	A6.1b	1.6
		At Risk Total		1.6
	>30% left and <10% protected	Critically Underprotected	A6.1c	4.7
		Critically Underprotected Total		4.7
<b>Total LENZ</b>			<b>6.3</b>	
P08/024	10-20% left	Chronically Threatened	G3.1b	0.8
		Chronically Threatened Total		0.8
	20-30% left	At Risk	A6.1b	117.4
		At Risk Total		117.4
<b>Total LENZ</b>			<b>118.2</b>	
P08/025	10-20% left	Chronically Threatened	G3.1b	7.1
		Chronically Threatened Total		7.1
	20-30% left	At Risk	A6.1b	8.9
		At Risk Total		8.9
<b>Total LENZ</b>			<b>16.0</b>	
P08/026	20-30% left	At Risk	A6.1b	45.3
		At Risk Total		45.3
<b>Total LENZ</b>			<b>45.3</b>	
P08/027	>30% left and <10% protected	Critically Underprotected	A6.1a	10.2
		Critically Underprotected Total		10.2
<b>Total LENZ</b>			<b>10.2</b>	
P08/028	10-20% left	Chronically Threatened	G3.1b	8.0
		Chronically Threatened Total		8.0
	20-30% left	At Risk	A6.1b	12.3
		At Risk Total		12.3
<b>Total LENZ</b>			<b>20.4</b>	

Continued on the next page

Table 5 continued from the previous page

PNA SITE NUMBER	CRITERIA	THREATENED ENVIRONMENT	LENZ LEVEL 4	TOTAL AREA (ha)
P08/029	20-30% left	At Risk	A6.1b	8.6
		At Risk Total		8.6
	>30% left and <10% protected	Critically Underprotected	A6.1c	0.3
		Critically Underprotected Total		0.3
<b>Total LENZ</b>			<b>9.0</b>	
P08/030	10-20% left	Chronically Threatened	A6.1d	9.5
		Chronically Threatened Total		9.5
	<b>Total LENZ</b>			<b>9.5</b>
P08/031	10-20% left	Chronically Threatened	A6.1d	0.1
		Chronically Threatened Total		0.1
	20-30% left	At Risk	A6.1b	0.9
		At Risk Total		0.9
	<b>Total LENZ</b>			<b>1.0</b>
P08/032	10-20% left	Chronically Threatened	A6.1d	4.7
		Chronically Threatened Total		4.7
	<b>Total LENZ</b>			<b>4.7</b>
P08/034	10-20% left	Chronically Threatened	A6.1d	1.5
		Chronically Threatened Total		1.5
	20-30% left	At Risk	A6.1b	1.9
		At Risk Total		1.9
	>30% left and <10% protected	Critically Underprotected	A6.1c	13.2
		Critically Underprotected Total		13.2
	<b>Total LENZ</b>			<b>16.6</b>
P08/035	10-20% left	Chronically Threatened	A6.1d	7.0
		Chronically Threatened Total		7.0
	<b>Total LENZ</b>			<b>7.0</b>
P08/036	20-30% left	At Risk	A6.1b	28.7
		At Risk Total		28.7
	<b>Total LENZ</b>			<b>28.7</b>
P08/037	10-20% left	Chronically Threatened	A6.1d	4.5
		Chronically Threatened Total		4.5
	20-30% left	At Risk	A6.1b	0.3
		At Risk Total		0.3
	<b>Total LENZ</b>			<b>4.8</b>
P08/038	10-20% left	Chronically Threatened	A6.1d	5.5
		Chronically Threatened Total		5.5
	<b>Total LENZ</b>			<b>5.5</b>
P08/039	10-20% left	Chronically Threatened	A6.1d	8.3
		Chronically Threatened Total		8.3
	>30% left and <10% protected	Critically Underprotected	A6.1c	25.9
		Critically Underprotected Total		25.9
	<b>Total LENZ</b>			<b>34.2</b>
P08/040	>30% left and <10% protected	Critically Underprotected	A6.1c	4.3
		Critically Underprotected Total		4.3
	<b>Total LENZ</b>			<b>4.3</b>
P08/041	>30% left and <10% protected	Critically Underprotected	A6.1c	14.6
		Critically Underprotected Total		14.6
	<b>Total LENZ</b>			<b>14.6</b>
P08/042	10-20% left	Chronically Threatened	G3.1b	0.3
		Chronically Threatened Total		0.3
	>30% left and <10% protected	Critically Underprotected	A6.1c	2.7
		Critically Underprotected Total		2.7
	<b>Total LENZ</b>			<b>3.1</b>

Continued on the next page

Table 5 continued from the previous page

PNA SITE NUMBER	CRITERIA	THREATENED ENVIRONMENT	LENZ LEVEL 4	TOTAL AREA (ha)
	10-20% left	Chronically Threatened	A5.2a	0.4
			G3.1b	4.2
		Chronically Threatened Total		4.5
	>30% left and <10% protected	Critically Underprotected	A6.1c	5.9
		Critically Underprotected Total		5.9
<b>Total LENZ</b>				<b>10.5</b>
P08/043	10-20% left	Chronically Threatened	A5.2a	
			G3.1b	
		Chronically Threatened Total		4.5
		Critically Underprotected	A6.1c	5.9
		Critically Underprotected Total		5.9
<b>Total LENZ</b>				<b>10.4</b>
P08/044	>30% left and <10% protected	Critically Underprotected	A6.1c	9.8
		Critically Underprotected Total		9.8
<b>Total LENZ</b>				<b>9.8</b>
P08/045	10-20% left	Chronically Threatened	G3.1b	2.5
		Chronically Threatened Total		2.5
	>30% left and <10% protected	Critically Underprotected	A6.1a	23.5
			A6.1c	1.0
		Critically Underprotected Total		24.5
<b>Total LENZ</b>				<b>27.0</b>
P08/046	>30% left and <10% protected	Critically Underprotected	A6.1c	9.5
		Critically Underprotected Total		9.5
<b>Total LENZ</b>				<b>9.5</b>
P08/047	>30% left and <10% protected	Critically Underprotected	A6.1c	3.0
		Critically Underprotected Total		3.0
<b>Total LENZ</b>				<b>3.0</b>
P08/048	<10% indigenous cover left	Acutely Threatened	A5.1b	2.8
		Acutely Threatened Total		2.8
	10-20% left	Chronically Threatened	A6.1d	0.8
		Chronically Threatened Total		0.8
<b>Total LENZ</b>				<b>3.6</b>
Q07/086	20-30% left	At Risk	A6.1b	10.7
		At Risk Total		10.7
	>30% left and <10% protected	Critically Underprotected	A6.1c	21.6
		Critically Underprotected Total		21.6
<b>Total LENZ</b>				<b>32.4</b>
Q07/087	>30% left and <10% protected	Critically Underprotected	A6.1c	10.8
		Critically Underprotected Total		10.8
<b>Total LENZ</b>				<b>10.8</b>
Q07/088	>30% left and <10% protected	Critically Underprotected	A6.1a	3.1
			A6.1c	4.5
		Critically Underprotected Total		7.5
<b>Total LENZ</b>				<b>7.5</b>
Q07/089	>30% left and <10% protected	Critically Underprotected	A6.1a	2.3
			A6.1c	77.1
		Critically Underprotected Total		79.3
<b>Total LENZ</b>				<b>79.3</b>
Q07/090	10-20% left	Chronically Threatened	A6.1d	2.7
			G3.1b	4.2
		Chronically Threatened Total		7.0
	20-30% left	At Risk	A6.1b	5.8
		At Risk Total		5.8
	>30% left and <10% protected	Critically Underprotected	A6.1a	0.3
			A6.1c	0.7
		Critically Underprotected Total		1.0

Continued on the next page

Table 5 continued from the previous page

PNA SITE NUMBER	CRITERIA	THREATENED ENVIRONMENT	LENZ LEVEL 4	TOTAL AREA (ha)
Q07/091	<10% indigenous cover left	Acutely Threatened	A5.1c	0.5
		Acutely Threatened Total		0.5
	10-20% left	Chronically Threatened	G3.1b	8.7
		Chronically Threatened Total		8.7
	20-30% left	At Risk	A6.1b	0.5
		At Risk Total		0.5
	>30% left and <10% protected	Critically Underprotected	A6.1a	3.9
Critically Underprotected Total		A6.1c	74.8	
<b>Total LENZ</b>			<b>88.4</b>	
Q07/092	>30% left and <10% protected	Critically Underprotected	A6.1a	0.9
		Critically Underprotected Total	A6.1c	31.0
	<b>Total LENZ</b>		<b>32.0</b>	
Q07/093	<10% indigenous cover left	Acutely Threatened	G3.1a	0.3
		Acutely Threatened Total		0.3
	>30% left and <10% protected	Critically Underprotected	A6.1c	5.6
		Critically Underprotected Total		5.6
<b>Total LENZ</b>		<b>5.8</b>		
Q07/094	>30% left and <10% protected	Critically Underprotected	A6.1c	11.1
		Critically Underprotected Total		11.1
<b>Total LENZ</b>		<b>11.1</b>		
Q07/095	>30% left and >20% protected	Less reduced and better protected	D1.1a	7.5
		Less reduced and better protected Total		7.5
<b>Total LENZ</b>		<b>7.6</b>		
Q07/096	>30% left and <10% protected	Critically Underprotected	A6.1c	7.0
		Critically Underprotected Total		7.0
<b>Total LENZ</b>		<b>7.0</b>		
Q07/097	10-20% left	Chronically Threatened	G3.1b	4.1
		Chronically Threatened Total		4.1
	>30% left and <10% protected	Critically Underprotected	A6.1c	11.0
		Critically Underprotected Total		11.0
<b>Total LENZ</b>		<b>15.1</b>		
Q07/098	10-20% left	Chronically Threatened	G3.1b	0.2
		Chronically Threatened Total		0.2
	>30% left and <10% protected	Critically Underprotected	A6.1a	7.2
		Critically Underprotected Total	A6.1c	20.0
	>30% left and >20% protected	Critically Underprotected Total		27.3
		Less reduced and better protected	D1.1b	45.2
<b>Total LENZ</b>	Less reduced and better protected Total		45.2	
<b>Total LENZ</b>		<b>72.6</b>		
Q07/099	>30% left and <10% protected	Critically Underprotected	A6.1c	6.2
		Critically Underprotected Total		6.2
<b>Total LENZ</b>		<b>6.2</b>		
Q07/100	20-30% left	At Risk	A6.1b	1.2
		At Risk Total		1.2
	>30% left and <10% protected	Critically Underprotected	A6.1c	16.6
		Critically Underprotected Total		16.6
<b>Total LENZ</b>		<b>17.9</b>		
Q07/101	>30% left and <10% protected	Critically Underprotected	A6.1c	11.0
		Critically Underprotected Total		11.0
<b>Total LENZ</b>		<b>11.0</b>		

Continued on the next page

Table 5 continued from the previous page

PNA SITE NUMBER	CRITERIA	THREATENED ENVIRONMENT	LENZ LEVEL 4	TOTAL AREA (ha)
Q07/103	10-20% left	Chronically Threatened	G3.1b	82.7
		Chronically Threatened Total		82.7
	20-30% left	At Risk	A6.1b	25.7
		At Risk Total		25.7
	>30% left and <10% protected	Critically Underprotected	A6.1a	2.1
	Critically Underprotected Total		2.1	
<b>Total LENZ</b>				<b>110.4</b>
Q07/104	>30% left and <10% protected	Critically Underprotected	A6.1c	12.5
		Critically Underprotected Total		12.5
<b>Total LENZ</b>				<b>12.5</b>
Q07/105	20-30% left	At Risk	A6.1b	3.1
		At Risk Total		3.1
	>30% left and <10% protected	Critically Underprotected	A6.1c	1.0
		Critically Underprotected Total		1.0
<b>Total LENZ</b>				<b>4.1</b>
Q07/106	10-20% left	Chronically Threatened	G3.1b	1.2
		Chronically Threatened Total		1.2
	>30% left and <10% protected	Critically Underprotected	A6.1a	0.2
		Critically Underprotected Total		0.2
<b>Total LENZ</b>				<b>1.4</b>
Q07/107	>30% left and <10% protected	Critically Underprotected	A6.1c	9.5
		Critically Underprotected Total		9.5
<b>Total LENZ</b>				<b>9.5</b>
Q07/108	10-20% left	Chronically Threatened	G3.1b	14.8
		Chronically Threatened Total		14.8
	>30% left and <10% protected	Critically Underprotected	A6.1a	3.1
			A6.1c	7.3
		Critically Underprotected Total		10.4
<b>Total LENZ</b>				<b>25.3</b>
Q07/175	10-20% left	Chronically Threatened	G3.1b	3.5
		Chronically Threatened Total		3.5
	20-30% left	At Risk	A6.1b	1.0
		At Risk Total		1.0
	>30% left and <10% protected	Critically Underprotected	A6.1a	0.1
	Critically Underprotected Total		0.1	
<b>Total LENZ</b>				<b>4.7</b>
Q07/178	>30% left and <10% protected	Critically Underprotected	A6.1c	10.7
		Critically Underprotected Total		10.7
<b>Total LENZ</b>				<b>10.7</b>
Q07/179	>30% left and <10% protected	Critically Underprotected	A6.1a	3.4
			A6.1c	4.3
		Critically Underprotected Total		7.7
<b>Total LENZ</b>				<b>7.7</b>
Q07/180	10-20% left	Chronically Threatened	G3.1b	0.3
		Chronically Threatened Total		0.3
	>30% left and <10% protected	Critically Underprotected	A6.1a	1.1
		Critically Underprotected Total		1.1
<b>Total LENZ</b>				<b>1.5</b>
Q08/001	10-20% left	Chronically Threatened	A6.1d	1.9
			G3.1b	0.2
		Chronically Threatened Total		2.0
	>30% left and <10% protected	Critically Underprotected	A6.1c	6.4
		Critically Underprotected Total		6.4
<b>Total LENZ</b>				<b>8.5</b>

Continued on the next page

Table 5 continued from the previous page

PNA SITE NUMBER	CRITERIA	THREATENED ENVIRONMENT	LENZ LEVEL 4	TOTAL AREA (ha)
Q08/002	10-20% left	Chronically Threatened	G3.1b	38.0
		Chronically Threatened Total		38.0
	20-30% left	At Risk	A6.1b	0.9
		At Risk Total		0.9
	>30% left and <10% protected	Critically Underprotected	A6.1a	3.6
	Critically Underprotected Total		3.6	
<b>Total LENZ</b>				<b>42.5</b>
Q08/003	>30% left and >20% protected	Less reduced and better protected	D1.1a	10.9
		Less reduced and better protected Total		10.9
<b>Total LENZ</b>				<b>10.9</b>
Q08/004	<10% indigenous cover left	Acutely Threatened	A7.2a	1.7
		Acutely Threatened Total		1.7
	10-20% left	Chronically Threatened	A6.1d	0.5
		Chronically Threatened Total	G3.1b	35.8
	>30% left and <10% protected	Critically Underprotected	A6.1a	16.1
			A6.1c	1.9
		Critically Underprotected Total		18.0
<b>Total LENZ</b>			<b>56.0</b>	
Q08/005	10-20% left	Chronically Threatened	G3.1b	3.3
		Chronically Threatened Total		3.3
	20-30% left	At Risk	A6.1b	1.1
		At Risk Total		1.1
	>30% left and <10% protected	Critically Underprotected	A6.1a	58.0
		Critically Underprotected Total	A6.1c	30.3
	Critically Underprotected Total		88.3	
<b>Total LENZ</b>			<b>92.7</b>	
Q08/006	20-30% left	At Risk	A6.1b	36.0
		At Risk Total		36.0
<b>Total LENZ</b>			<b>36.0</b>	
Q08/007	20-30% left	At Risk	A6.1b	7.7
		At Risk Total		7.7
<b>Total LENZ</b>			<b>7.7</b>	
Q08/008	20-30% left	At Risk	A6.1b	10.9
		At Risk Total		10.9
<b>Total LENZ</b>			<b>10.9</b>	
Q08/010	10-20% left	Chronically Threatened	A6.1d	1.5
		Chronically Threatened Total	G3.1b	0.7
	20-30% left	At Risk	A6.1b	146.1
		At Risk Total		146.1
	<b>Total LENZ</b>			<b>148.2</b>
Q08/011	20-30% left	At Risk	A6.1b	1.8
		At Risk Total		1.8
	>30% left and <10% protected	Critically Underprotected	A6.1c	6.4
		Critically Underprotected Total		6.4
	<b>Total LENZ</b>			<b>8.2</b>
Q08/012	>30% left and <10% protected	Critically Underprotected	A6.1c	11.6
		Critically Underprotected Total		11.6
<b>Total LENZ</b>			<b>11.6</b>	
Q08/013	10-20% left	Chronically Threatened	A6.1d	1.0
		Chronically Threatened Total	G3.1b	1.5
	>30% left and <10% protected	Critically Underprotected	A6.1a	14.7
		Critically Underprotected Total	A6.1c	13.5
	<b>Total LENZ</b>			<b>30.7</b>

Continued on the next page

Table 5 continued from the previous page

PNA SITE NUMBER	CRITERIA	THREATENED ENVIRONMENT	LENZ LEVEL 4	TOTAL AREA (ha)
Q08/014	10-20% left	Chronically Threatened	A6.1d	4.3
		Chronically Threatened Total		4.3
	>30% left and <10% protected	Critically Underprotected	A6.1c	56.1
		Critically Underprotected Total		56.1
<b>Total LENZ</b>				<b>60.4</b>
Q08/015	10-20% left	Chronically Threatened	G3.1b	16.1
		Chronically Threatened Total		16.1
	20-30% left	At Risk	A6.1b	0.1
		At Risk Total		0.1
	>30% left and <10% protected	Critically Underprotected	A6.1a	33.7
	Critically Underprotected Total		33.7	
<b>Total LENZ</b>				<b>49.9</b>
Q08/016	<10% indigenous cover left	Acutely Threatened	A5.1b	0.2
		Acutely Threatened Total		0.2
	10-20% left	Chronically Threatened	G3.1b	1.8
		Chronically Threatened Total		1.8
	20-30% left	At Risk	A6.1b	16.9
	At Risk Total		16.9	
<b>Total LENZ</b>				<b>18.9</b>
Q08/017	20-30% left	At Risk	A6.1b	3.7
		At Risk Total		3.7
<b>Total LENZ</b>				<b>3.7</b>
Q08/018	10-20% left	Chronically Threatened	G3.1b	0.9
		Chronically Threatened Total		0.9
	>30% left and <10% protected	Critically Underprotected	A6.1a	4.9
		Critically Underprotected Total		4.9
<b>Total LENZ</b>				<b>5.8</b>
Q08/019	<10% indigenous cover left	Acutely Threatened	A5.1b	0.8
		Acutely Threatened Total		0.8
	10-20% left	Chronically Threatened	G3.1b	42.6
		Chronically Threatened Total		42.6
	>30% left and <10% protected	Critically Underprotected	A6.1a	14.6
			A6.1c	104.3
		Critically Underprotected Total		118.9
	>30% left and >20% protected	Less reduced and better protected	D1.1b	47.0
		Less reduced and better protected Total		47.0
	<b>Total LENZ</b>			<b>209.3</b>
Q08/020	10-20% left	Chronically Threatened	G3.1b	0.4
		Chronically Threatened Total		0.4
	>30% left and <10% protected	Critically Underprotected	A6.1c	4.8
		Critically Underprotected Total		4.8
<b>Total LENZ</b>				<b>5.2</b>
Q08/021	20-30% left	At Risk	A6.1b	125.5
		At Risk Total		125.5
	>30% left and <10% protected	Critically Underprotected	A6.1c	6.4
		Critically Underprotected Total		6.4
<b>Total LENZ</b>				<b>131.9</b>
Q08/022	10-20% left	Chronically Threatened	A6.1d	1.0
			G3.1b	0.9
		Chronically Threatened Total		1.8
	20-30% left	At Risk	A6.1b	62.3
		At Risk Total		62.3
	>30% left and <10% protected	Critically Underprotected	A6.1a	13.5
			A6.1c	35.0
		Critically Underprotected Total		48.5
	>30% left and >20% protected	Less reduced and better protected	D1.1a	0.1
			D1.1b	92.4
		D1.1e	0.1	
	Less reduced and better protected Total		92.7	

Continued on the next page



Table 5 continued from the previous page

PNA SITE NUMBER	CRITERIA	THREATENED ENVIRONMENT	LENZ LEVEL 4	TOTAL AREA (ha)
Q08/023	20-30% left	At Risk	A6.1b	11.4
		At Risk Total		11.4
	>30% left and <10% protected	Critically Underprotected	A6.1c	73.6
		Critically Underprotected Total		73.6
<b>Total LENZ</b>			<b>85.0</b>	
Q08/024	10-20% left	Chronically Threatened	G3.1b	3.2
		Chronically Threatened Total		3.2
	20-30% left	At Risk	A6.1b	9.8
		At Risk Total		9.8
<b>Total LENZ</b>			<b>13.0</b>	
Q08/025	10-20% left	Chronically Threatened	A6.1d	0.3
		Chronically Threatened Total		0.3
	20-30% left	At Risk	A6.1b	6.7
		At Risk Total		6.7
	>30% left and <10% protected	Critically Underprotected	A6.1c	5.4
		Critically Underprotected Total		5.4
>30% left and 10-20% protected	Underprotected	D1.2b	0.2	
Underprotected Total			0.2	
<b>Total LENZ</b>			<b>12.6</b>	
Q08/026	10-20% left	Chronically Threatened	G3.1b	10.8
		Chronically Threatened Total		10.8
	20-30% left	At Risk	A6.1b	0.7
		At Risk Total		0.7
	>30% left and <10% protected	Critically Underprotected	A6.1c	77.2
Critically Underprotected Total			77.2	
<b>Total LENZ</b>			<b>88.7</b>	
Q08/027	20-30% left	At Risk	A6.1b	29.4
		At Risk Total		29.4
	>30% left and <10% protected	Critically Underprotected	A6.1c	10.7
		Critically Underprotected Total		10.7
<b>Total LENZ</b>			<b>40.1</b>	
Q08/028	20-30% left	At Risk	A6.1b	16.0
		At Risk Total		16.0
	>30% left and <10% protected	Critically Underprotected	A6.1c	1.4
		Critically Underprotected Total		1.4
<b>Total LENZ</b>			<b>17.4</b>	
Q08/029	20-30% left	At Risk	A6.1b	9.5
		At Risk Total		9.5
	>30% left and <10% protected	Critically Underprotected	A6.1c	15.7
		Critically Underprotected Total		15.7
<b>Total LENZ</b>			<b>25.2</b>	
Q08/030	20-30% left	At Risk	A6.1b	153.8
		At Risk Total		153.8
<b>Total LENZ</b>			<b>153.8</b>	
Q08/031	20-30% left	At Risk	A6.1b	2.6
		At Risk Total		2.6
	>30% left and <10% protected	Critically Underprotected	A6.1a	0.2
		Critically Underprotected Total	A6.1c	84.5
<b>Total LENZ</b>			<b>87.3</b>	
Q08/032	>30% left and <10% protected	Critically Underprotected	A6.1a	5.9
		Critically Underprotected Total	A6.1c	35.3
		Critically Underprotected Total		41.2
<b>Total LENZ</b>			<b>41.2</b>	

Continued on the next page

Continued from the previous page

PNA SITE NUMBER	CRITERIA	THREATENED ENVIRONMENT	LENZ LEVEL 4	TOTAL AREA (ha)
Q08/033	20-30% left	At Risk	A6.1b	36.6
		At Risk Total		36.6
	>30% left and <10% protected	Critically Underprotected	A6.1c	10.0
		Critically Underprotected Total		10.0
<b>Total LENZ</b>				<b>46.6</b>
Q08/034	>30% left and <10% protected	Critically Underprotected	A6.1c	48.0
		Critically Underprotected Total		48.0
<b>Total LENZ</b>				<b>48.0</b>
Q08/035	10-20% left	Chronically Threatened	G3.1b	3.9
		Chronically Threatened Total		3.9
	20-30% left	At Risk	A6.1b	31.3
		At Risk Total		31.3
<b>Total LENZ</b>				<b>35.1</b>
Q08/036	20-30% left	At Risk	A6.1b	21.0
		At Risk Total		21.0
<b>Total LENZ</b>				<b>21.0</b>
Q08/037	>30% left and <10% protected	Critically Underprotected	A6.1c	10.3
		Critically Underprotected Total		10.3
<b>Total LENZ</b>				<b>10.3</b>
Q08/038	20-30% left	At Risk	A6.1b	0.2
		At Risk Total		0.2
	>30% left and <10% protected	Critically Underprotected	A6.1c	50.3
		Critically Underprotected Total		50.3
<b>Total LENZ</b>				<b>50.5</b>
Q08/039	20-30% left	At Risk	A6.1b	40.4
		At Risk Total		40.4
	>30% left and <10% protected	Critically Underprotected	A6.1c	0.6
		Critically Underprotected Total		0.6
<b>Total LENZ</b>				<b>41.0</b>
Q08/040	20-30% left	At Risk	A6.1b	9.2
		At Risk Total		9.2
<b>Total LENZ</b>				<b>9.2</b>
Q08/041	>30% left and <10% protected	Critically Underprotected	A6.1a	19.4
			A6.1c	8.0
		Critically Underprotected Total		27.4
<b>Total LENZ</b>				<b>27.4</b>
Q08/042	20-30% left	At Risk	A6.1b	0.6
		At Risk Total		0.6
	>30% left and <10% protected	Critically Underprotected	A6.1a	3.6
			A6.1c	27.4
		Critically Underprotected Total		31.0
<b>Total LENZ</b>				<b>31.6</b>
Q08/043	10-20% left	Chronically Threatened	G3.1b	6.4
		Chronically Threatened Total		6.4
	20-30% left	At Risk	A6.1b	32.9
		At Risk Total		32.9
	>30% left and <10% protected	Critically Underprotected	A6.1a	12.9
		Critically Underprotected Total		12.9
<b>Total LENZ</b>				<b>52.2</b>
Q08/044	10-20% left	Chronically Threatened	G3.1b	1.9
		Chronically Threatened Total		1.9
	20-30% left	At Risk	A6.1b	20.1
		At Risk Total		20.1
<b>Total LENZ</b>				<b>22.0</b>

Continued on the next page

Table 5 continued from the previous page

PNA SITE NUMBER	CRITERIA	THREATENED ENVIRONMENT	LENZ LEVEL 4	TOTAL AREA (ha)
Q08/045	20-30% left	At Risk	A6.1b	4.9
		At Risk Total		4.9
	<b>Total LENZ</b>			<b>4.9</b>
Q08/046	20-30% left	At Risk	A6.1b	10.6
		At Risk Total		10.6
	<b>Total LENZ</b>			<b>10.6</b>
Q08/047	20-30% left	At Risk	A6.1b	10.9
		At Risk Total		10.9
	<b>Total LENZ</b>			<b>10.9</b>
Q08/049	>30% left and <10% protected	Critically Underprotected	A6.1c	19.5
		Critically Underprotected Total		19.5
	<b>Total LENZ</b>			<b>19.5</b>
Q08/050	10-20% left	Chronically Threatened	A6.1d	0.6
		Chronically Threatened Total		0.6
	20-30% left	At Risk	A6.1b	1.3
		At Risk Total		1.3
	>30% left and <10% protected	Critically Underprotected	A6.1c	7.6
		Critically Underprotected Total		7.6
	<b>Total LENZ</b>			<b>9.4</b>
Q08/051	20-30% left	At Risk	A6.1b	9.5
		At Risk Total		9.5
	>30% left and <10% protected	Critically Underprotected	A6.1c	19.9
		Critically Underprotected Total		19.9
	<b>Total LENZ</b>			<b>29.4</b>
Q08/052	>30% left and <10% protected	Critically Underprotected	A6.1a	7.2
		Critically Underprotected Total		7.2
	<b>Total LENZ</b>			<b>7.2</b>
Q08/053	>30% left and <10% protected	Critically Underprotected	A6.1a	8.6
		Critically Underprotected Total		8.6
	<b>Total LENZ</b>			<b>8.6</b>
Q08/054	10-20% left	Chronically Threatened	G3.1b	3.5
		Chronically Threatened Total		3.5
	20-30% left	At Risk	A6.1b	7.1
		At Risk Total		7.1
	<b>Total LENZ</b>			<b>10.6</b>
Q08/055	>30% left and <10% protected	Critically Underprotected	A6.1a	2.5
		Critically Underprotected Total		2.5
	<b>Total LENZ</b>			<b>2.5</b>
Q08/056	10-20% left	At Risk	A6.1b	8.1
		At Risk Total		8.1
	<b>Total LENZ</b>			<b>8.1</b>
	<b>Grand Total</b>			<b>5497.6</b>

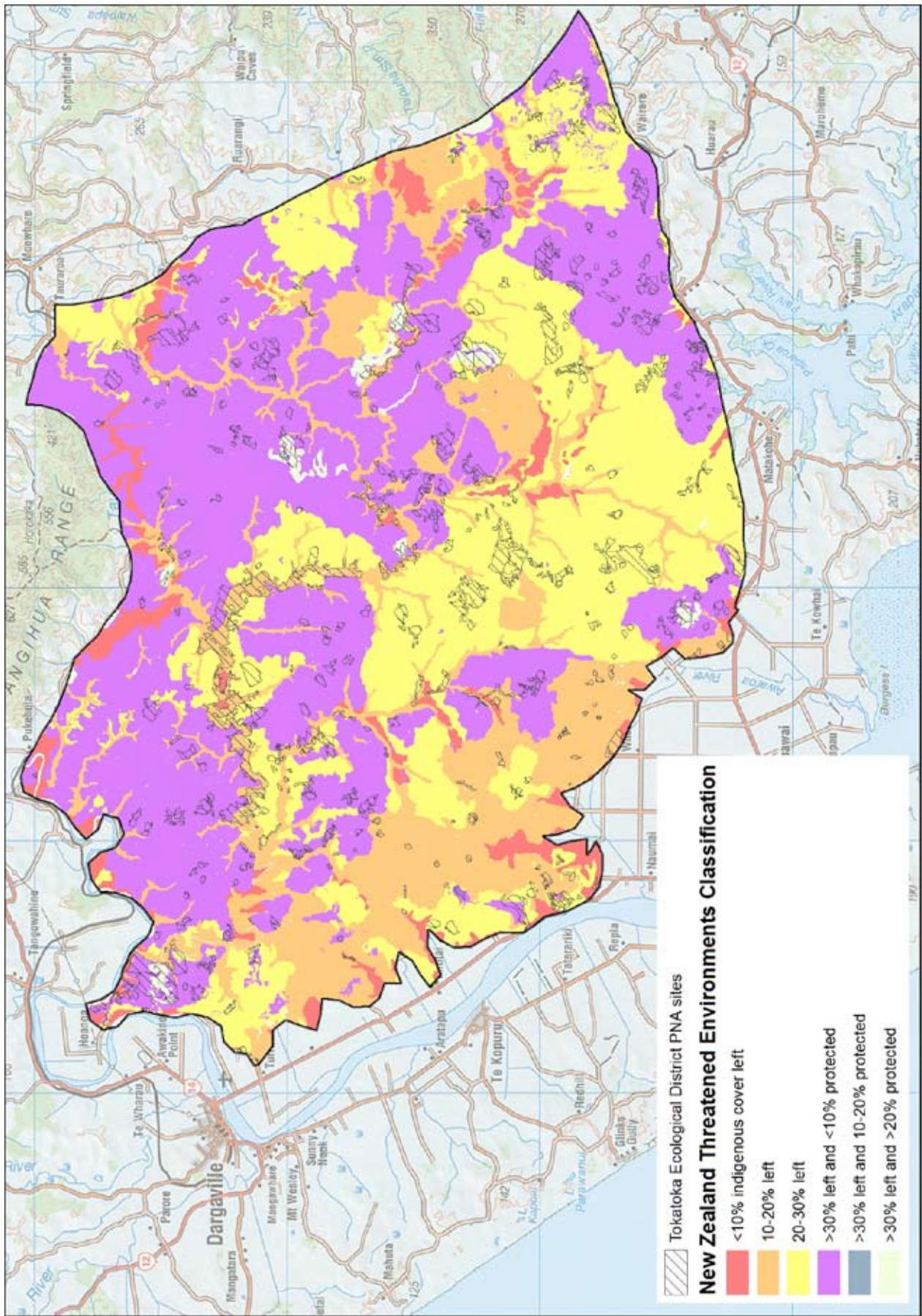


Figure 3. Threatened Land Environments of Tokatoka Ecological District.

TABLE 6. ECOLOGICAL UNITS RECORDED IN THE TOKATOKA ECOLOGICAL DISTRICT.

Pt =Part of site is within geological description; Bold site numbers=representative sites; \* = Level 2 site.

ECOLOGICAL UNIT	MANGAKAHIA COMPLEX		MOTATAU COMPLEX			WAITAKERE GROUP			TANGIHUA COMPLEX		HOLOCENE ALLUVIUM	SWAMP DEPOSITS	QUARTERNARY ALLUVIAL DEPOSITS	ALLUVIUM &/OR COLLUVIAL DEPOSITS	
	SANDSTONE & MUDSTONE	MUDSTONE	MUDSTONE & SANDSTONE	MUDDY LIMESTONE	MOTATAU LIMESTONE	ANDESITE	DACITE	BASALTIC BRECCIA &/OR INTRUSIVES	BASIC VOLCANICS	IGNEOUS ROCKS					
<b>Shrubland</b>															
Gorse	Q08/021														
Gorse-kanuka/manuka	Q08/026														
Kanuka/manuka	*P07/087, *P07/094, <b>PIP07/101</b> , P08/001, *P08/003, PtP08/019, Q07/089, PtQ08/019, Q08/021, <b>Q08/022</b> , Q08/023, Q08/029, Q08/032, Q08/035, *Q08/036, *Q08/038, PtQ08/039 <b>PIQ08/043</b> , *Q08/049, *Q08/052	P07/098 *P07/099, *P08/005, P08/024, PtP08/034, PtQ08/030	<b>PIP08/034</b>			<b>PIP08/034</b> , Pt*P08/012a						<b>PIQ08/043</b>		Pt Q08/039	
Kanuka/manuka-mapou		<b>PIP08/034</b>					<b>PIP08/034</b>								
Kanuka/manuka-tanekaha	<b>PIQ08/043</b>	Q08/040										<b>PIQ08/043</b>			
Kanuka/manuka-totara	*P07/087, <b>PIP07/101</b> , *P08/003, Q08/021, <b>Q08/022</b> , <b>Q08/033</b>	P08/024 <b>PIP08/034</b> , *Q08/006, Q08/040,	<b>PIP08/034</b>			<b>PIP08/034</b>								<b>PIP07/101</b>	
Kanuka/manuka-totara-tree fern	<b>PIP07/101</b>													<b>PIP07/101</b>	

Continued on next page

Table 6 continued, from previous page

ECOLOGICAL UNIT	MANGAKAHIA COMPLEX		MOTATAU COMPLEX			WAITAKERE GROUP			TANGIHUA COMPLEX		HOLOCENE ALLUVIUM	SWAMP DEPOSITS	QUARTERNARY ALLUVIAL DEPOSITS	ALLUVIUM &/OR COLLUVIAL DEPOSITS
	SANDSTONE & MUDSTONE	MUDSTONE	MUDSTONE & SANDSTONE	MUDDY LIMESTONE	MOTATAU LIMESTONE	ANDESITE	DACITE	BASALTIC BRECCIA &/OR INTRUSIVES	BASIC VOLCANICS	IGNEOUS ROCKS				
Mamaku-kanuka/manuka		<b>PIP08/034</b>		<b>PIP08/034</b>		<b>PIP08/034</b>								
Mamaku-pate	*Q08/038													
Mamaku	<b>PIP07/091</b> , *Q08/056	<b>PIP07/090</b> , *Q08/056				<b>P08/014</b>					<b>Pt P07/091</b>			
Mamaku-mapou						<b>P08/014</b>								
Mapou-rangiora						<b>P08/014</b>								
Ti kouka-mamaku-pate	*Q08/038													
Totara	PtP07/101	P08/024									PtP07/101			
Totara-kanuka/manuka	<b>PIP07/101</b> , <b>Q08/022</b>										<b>PIP07/101</b>			
<b>Broadleaf forest</b>														
Kanuka/manuka	<b>PIP07/086</b> PtP07/091, P08/001, Pt*P08/012a, PtP08/019, *P08/029, *P08/041, Q07/098, PtQ07/100, Q08/005, <b>PIQ08/015</b> , Q08/035, Q08/041	P07/088, P07/100, PtP08/015, PtP08/018, P08/024, P08/026, <b>PIP08/036</b> , Q08/010, PtQ08/030		PtP08/015, <b>PIP08/036</b>		<b>P08/012</b> , Pt*P08/012a, *P08/013, <b>P08/014</b>	P08/030	PtP08/015			PtQ07/100, <b>PIP07/086</b> , PtP07/091, PtP08/018, PtP08/019, *P08/020	<b>PIP07/086</b>	<b>PIQ08/015</b> , PtQ08/030	
Kanuka/manuka-kowhai-puriri		<b>PIP08/015</b>		<b>PIP08/015</b>				<b>PIP08/015</b>						
Karaka-kohe-kohe-taraire														
Kohekohe-nikau	*Q08/055								<b>PIQ07/095</b>					

Continued on next page

Table 6 continued from previous page

ECOLOGICAL UNIT	MANGAKAHIA COMPLEX		MOTATAU COMPLEX			WAITAKERE GROUP			TANGIHUA COMPLEX		HOLOCENE ALLUVIUM	SWAMP DEPOSITS	QUARTERNARY ALLUVIAL DEPOSITS	ALLUVIUM &/OR COLLUVIAL DEPOSITS
	SANDSTONE & MUDSTONE	MUDSTONE	MUDSTONE & SANDSTONE	MUDDY LIMESTONE	MOTATAU LIMESTONE	ANDESITE	DACITE	BASALTIC BRECCIA &/OR INTRUSIVES	BASIC VOLCANICS	IGNEOUS ROCKS				
Kohekohe-puriri-taraire	PtP08/012a					PtP08/012a								
Karaka-kowhai									PtQ07/095					
Kowhai	PtP07/086, PtP07/091, PtQ08/002	PtQ07/103, PtP08/015, PtP08/018		PtP08/015				PtP08/015			PtQ08/002, PtP07/086, PtP07/091, PtP08/018	PtQ07/103, PtP07/086	PtQ07/103	
Kowhai-ti kouka-manatu	PtP07/086													
Kowhai-manatu	PtP07/086													
Kowhai-puriri		PtP08/036		PtP08/036										
Mahoe-mamaku			Q07/086											
Mamaku fernland	PtQ08/019										PtQ08/019			
Manatu	PtP07/086													
Manatu-puriri	PtP07/086													
Manatu-titoki	PtQ08/002													
Manuka	PtP07/086													
Manuka-manatu	PtP07/086													
Nikau			P08/008	*PtP08/048										*PtP08/048
Nikau-puriri				*P08/006 *PtP08/007										
Nikau-puriri														
Nikau-puriri-taraire				P08/047										*PtP08/007
Nikau-taraire	P08/002	PtP08/015		*P08/006, PtP08/015				PtP08/015						
Puriri			P08/008 (KDCSR)	P08/004, P08/017										

Continued on next page

Table 6 continued from previous page

ECOLOGICAL UNIT	MANGAKAHIA COMPLEX SANDSTONE & MUDSTONE	MUDSTONE	MOTATAU COMPLEX		WAITAKERE GROUP			TANGIHUA COMPLEX		HOLOCENE ALLUVIUM	SWAMP DEPOSITS	QUARTERNARY ALLUVIAL DEPOSITS	ALLUVIUM &/OR COLLUVIAL DEPOSITS
			MUDSTONE & SANDSTONE	MUDDY LIMESTONE	MOTATAU LIMESTONE	ANDESITE	DACITE	BASALTIC BRECCIA &/OR INTRUSIVES	BASIC VOLCANICS				
Puriri-kanuka/manuka	*Q07/178	PtP08/034		*P08/006, P08/017, PtP08/034		P08/030							
Tairāre	PtP07/086, PtP07/092, PtP07/093, *P07/094, P07/096, PtP07/101, PtP07/104, *P07/106, P07/109, P08/001, PtP08/019, P08/039, *P08/040, Q07/089, Q07/094, *Q07/096, Q07/097, Q07/098, *Q07/099, PtQ07/100, *Q07/101, *Q07/104, *Q07/105, *Q07/107, Q07/179, Q08/005, Q08/012, *Q08/013, Q08/014, PtQ08/015, PtQ08/019, Q08/021, Q08/023, Q08/026, Q08/031, Q08/032,	P07/100, PtP08/015, P08/024, P08/026, PtP08/034, PtP08/036, Pt*Q07/180, *Q08/006, Q08/010, Q08/027, PtQ08/030, *Q08/047	Q07/086, PtQ07/091, *Pt Q07/090, Q07/093	P08/006, P08/008, PtP08/015, PtP08/034, PtP08/036	P08/012, P08/014, PtP08/034	PtP08/015	Q08/003	Pt Q07/100, Pt Q08/019, Pt P07/086, PtP07/092, PtP07/093, PtP07/101, PtP07/104, PtP08/019, PtP08/043	PtP07/086, PtP07/093	PtQ07/091, PtQ08/015, PtQ08/030	Pt*Q07/180		

Continued on next page



Table 6 continued from previous page

ECOLOGICAL UNIT	MANGAKAHIA COMPLEX		MOTATAU COMPLEX			WAITAKERE GROUP			TANGIHUA COMPLEX		HOLOCENE ALLUVIUM	SWAMP DEPOSITS	QUARTERNARY ALLUVIAL DEPOSITS	ALLUVIUM &/OR COLLUVIAL DEPOSITS
	SANDSTONE & MUDSTONE	MUDSTONE	MUDSTONE & SANDSTONE	MUDDY LIMESTONE	MOTATAU LIMESTONE	ANDESITE	DACITE	BASALTIC BRECCIA &/OR INTRUSIVES	BASIC VOLCANICS	IGNEOUS ROCKS				
Tarare cont'd	Q08/034, *Q08/037, *Q08/038, Q08/044, *Q08/049, *Q08/052, PtP08/043, P08/044													
Tarare-puriri	Q08/042, P08/001		*PtP08/007											*PtP08/007
Ti kouka	PtP07/093, PtP07/101, PtP08/025, PtP08/043										PtP07/093, PtP07/101, PtP08/025, PtP08/043	PtP07/093		
Ti kouka-kanuka/ Manuka- harakeke	Q08/035													
Ti kouka-manatu	PtP07/086										PtP07/086	PtP07/086		
Ti kouka-manuka	PtP07/086										PtP07/086	PtP07/086		
Towai	*P07/106													
<b>Podocarp forest</b>														
Kahikatea	PtP07/086, PtP07/091, PtP07/092, PtP07/093, *P07/094, PtP07/101, PtP07/103, PtP07/104, P07/110, *P08/021, PtP08/043, P08/044, PtQ07/108, Q07/179 PtQ08/002, PtQ08/004,	*P08/005, PtP08/018, PtP08/034, Q08/027	Q07/093	P08/008, *P08/031, PtP08/034, *PtP08/048		PtP08/034					*Q07/106, PtQ07/108, PtQ08/002, PtQ08/004, PtQ08/019, *PtQ08/054, PtP07/086, PtP07/091, PtP07/092, PtP07/093, *P07/095, PtP07/101, PtP07/103, PtP07/104, PtP08/018, *P08/020,	PtP07/086, PtP07/093	*Q07/175	PtQ08/039, *PtP08/048

Continued on next page

Table 6 continued from previous page

ECOLOGICAL UNIT	MANGAKAHIA COMPLEX		MOTATAU COMPLEX			WAITAKERE GROUP			TANGIHUA COMPLEX			HOLOCENE ALLUVIUM	SWAMP DEPOSITS	QUARTERNARY ALLUVIAL DEPOSITS	ALLUVIUM &/OR COLLUVIAL DEPOSITS
	SANDSTONE & MUDSTONE	MUDSTONE	MUDSTONE & SANDSTONE	MUDDY LIMESTONE	MOTATAU LIMESTONE	ANDESITE	DACITE	BASALTIC BRECCIA &/OR INTRUSIVES	BASIC VOLCANICS	IGNEOUS ROCKS					
Kahikatea cont'd	Q08/014, PtQ08/019, Q08/022, Q08/031, Q08/032, PtQ08/039, *PtQ08/054										*P08/021, PtP08/043				
Kahikatearimu		<b>P08/026</b>													
Kahikateatotara	PtP08/019, <b>PtQ07/108</b> , PtQ08/011, Q08/022, Q08/023, Q08/026	P07/098, PtP08/018, *Q08/007, Q08/027	PtQ07/091								PtQ07/108, PtP08/018, PtP08/019, PtQ08/011			PtQ07/091	
Rimu	PtP07/086, Q07/098, <b>PtQ08/004</b> , <b>PtQ08/015</b> , <b>Q08/022</b> , <b>Q08/025</b> , Q08/029, Q08/032, <b>Q08/035</b> , *Q08/037, PtQ08/039	<b>Q08/018</b> , Q08/027	<b>Q07/092</b>			<b>P07/114</b>					<b>PtQ08/004</b> , Pt P07/086			<b>PtQ08/015</b>	PtQ08/039
Rimutaneke		P07/100, <b>Q08/027</b>													
Rimutanekeatotara		Q08/010													
Rimutotara	<b>Q07/088</b>	Q08/010, <b>PtQ08/030</b>												<b>PtQ08/030</b>	
Taneke	Q08/022, <b>Q08/025</b> , Q08/029, Q08/034	<b>PtQ08/030</b>												<b>PtQ08/030</b>	
Tanekeatotara	P07/108, Q08/022,	<b>Q08/010</b>	<b>PtQ07/091</b>											<b>PtQ07/091</b>	

Continued on next page

Table 6 continued from previous page

ECOLOGICAL UNIT	MANGAKAHIA COMPLEX		MOTATAU COMPLEX			WAITAKERE GROUP			TANGIHUA COMPLEX		HOLOCENE ALLUVIUM	SWAMP DEPOSITS	QUARTERNARY ALLUVIAL DEPOSITS	ALLUVIUM &/OR COLLUVIAL DEPOSITS
	SANDSTONE & MUDSTONE	MUDSTONE	MUDSTONE & SANDSTONE	MUDDY LIMESTONE	MOTATAU LIMESTONE	ANDESITE	DACITE	BASALTIC BRECCIA &/OR INTRUSIVES	BASIC VOLCANICS	IGNEOUS ROCKS				
Totara	<b>PtP07/086</b> , PtP07/091, P07/096, *P07/105, <b>P07/110</b> , *P07/117, *P07/119, <b>P08/001</b> , <b>P08/021</b> PtP08/019, PtP08/025, *P08/042, PtP08/043, Q07/089, *Q07/096, *Q07/099, *Q07/101, *Q07/105, PtQ07/108, *Q07/178, PtQ08/004, <b>Q08/005</b> , *Q08/008, *Q08/013, Q08/014, PtQ08/015, PtQ08/019, <b>Q08/022</b> , Q08/026, Q08/031, Q08/033, Q08/034, *Q08/038, *Q08/046, <b>Q08/051</b>	*P07/098a *P07/113, *P08/016, PtP08/018, P08/024, PtQ07/103, *Q08/006, <b>Q08/010</b> , *Q08/016, Q08/027, <b>PtQ08/030</b> , *Q08/047, *Q08/056	*PtQ07/090, PtQ07/091, Q07/092	*P08/009, *P08/037						<b>Q08/003</b>	PtQ07/108, PtQ08/019, PtQ08/004, <b>PtP07/086</b> , PtP07/091, PtP08/018, PtP08/019, PtP08/025, PtP08/043	PtQ07/103, <b>PtP07/086</b>	*PtQ07/090, <b>PtQ07/091</b> , PtQ07/103, <b>PtQ08/030</b>	
Totara-kahikatea			*Q08/016		Q07/086									
<b>Broadleaf-Podocarp forest</b>														
Black wattle-kanuka/manuka-pine								*P08/013						

Continued on next page

Table 6 continued from previous page

ECOLOGICAL UNIT	MANGAKAHIA COMPLEX		MOTATAU COMPLEX			WAITAKERE GROUP			TANGIHUA COMPLEX			HOLOCENE ALLUVIUM	SWAMP DEPOSITS	QUARTERNARY ALLUVIAL DEPOSITS	ALLUVIUM &/OR COLLUVIAL DEPOSITS
	SANDSTONE & MUDSTONE	MUDSTONE	MUDSTONE & SANDSTONE	MUDDY LIMESTONE	MOTATAU LIMESTONE	ANDESITE	DACITE	BASALTIC BRECCIA &/OR INTRUSIVES	BASIC VOLCANICS	IGNEOUS ROCKS					
Black wattle-kanuka/Manuka-totara	*P07/117														
Broadleaf-podocarp forest					*PtP08/011										*PtP08/011
Kahikateati kouka	<b>PIP07/086</b>											<b>PIP07/086</b>			
Kahikateati kouka-kowhai-manatu	<b>PIP07/086</b>											<b>PIP07/086</b>			
Kahikateakanuka/manuka		Pt P08/018					<b>P08/030</b>					PtP08/018			
Kahikateakanuka/manuka		<b>PIP07/090</b>													
Kahikateamanatu-totara	<b>PIP07/086</b>											<b>PIP07/086</b>			
Kahikateamanuka	<b>PIP07/086</b>											<b>PIP07/086</b>			
Kahikateanikau		<b>P08/026</b>													
Kahikateanikau-puriri				PtP08/032				PtP08/032							
Kahikateapuriri		PtQ08/030												PtQ08/030	
Kahikateapuriri-totara	<b>P08/002</b>														
Kahikateataraire	*Q08/038, Q08/044														
Kahikateataraire-totara	*P08/045														
Kanuka-totara	<b>PIP07/086</b>											<b>PIP07/086</b>			

Continued on next page

Table 6 continued from previous page

ECOLOGICAL UNIT	MANGAKAHIA COMPLEX		MOTATAU COMPLEX			WAITAKERE GROUP			TANGIHUA COMPLEX			HOLOCENE ALLUVIUM	SWAMP DEPOSITS	QUARTERNARY ALLUVIAL DEPOSITS	ALLUVIUM &/OR COLLUVIAL DEPOSITS
	SANDSTONE & MUDSTONE	MUDSTONE	MUDSTONE & SANDSTONE	MUDDY LIMESTONE	MOTATAU LIMESTONE	ANDESITE	DACITE	BASALTIC BRECCIA &/OR INTRUSIVES	BASIC VOLCANICS	IGNEOUS ROCKS					
Kanuka/ manuka- kowhai- totara												*P08/020, P08/038			
Kanuka/ manuka- mamaku- totara	*Q08/050														
Kanuka/ manuka- puriri				*P08/035											
Kanuka/ manuka- puriri-totara		PtP08/036		PtP08/036											
Kanuka/ manuka- rimu	PtP07/091, PtP07/093, PtQ08/019	P07/100, PtQ08/030, PtP08/018						P08/012				PtP07/091, PtP07/093, PtQ08/019, PtP08/018	PtP07/093	PtQ08/030	
Kanuka/ manuka- rimu- tanekeha		PtQ08/030, P08/026												PtQ08/030	
Kanuka/ manuka- rimu-totara	Q08/032, PtP07/086, PtQ08/024											PtP07/086	PtP07/086		PtQ08/024
Kanuka/ manuka- tanekeha	PtQ07/100, Q08/029, Q08/041		PtQ07/091									PtQ07/100		PtQ07/091	
Kanuka/ manuka- tanekeha- totara	PtP07/091, PtQ08/024, Q08/035	Q08/010, P07/112										PtP07/091			PtQ08/024
Kanuka/ manuka- totara	PtP07/086, PtP07/091, PtP07/092, PtP07/093, *P07/094, P07/096, *P07/102, *P07/117, P08/001, PtP08/019	P07/112, *P08/016, PtP08/018, *Q08/006, Q08/010	PtQ07/091									PtQ08/019, PtP07/086, PtP07/091, PtP07/092, PtP07/093, PtP08/018, PtP08/019, PtP08/028	PtP07/086, PtP07/093		

Continued on next page

Table 6 continued from previous page

ECOLOGICAL UNIT	MANGAKAHIA COMPLEX		MOTATAU COMPLEX			WAITAKERE GROUP			TANGIHUA COMPLEX		HOLOCENE ALLUVIUM	SWAMP DEPOSITS	QUARTERNARY ALLUVIAL DEPOSITS	ALLUVIUM &/OR COLLUVIAL DEPOSITS
	SANDSTONE & MUDSTONE	MUDSTONE	MUDSTONE & SANDSTONE	MUDDY LIMESTONE	MOTATAU LIMESTONE	ANDESITE	DACITE	BASALTIC BRECCIA &/OR INTRUSIVES	BASIC VOLCANICS	IGNEOUS ROCKS				
Kanuka/ manuka- totara cont'd	PtP08/028, *P08/041, *P08/045, *Q07/178, PtQ08/019, <b>Q08/023</b> , Q08/026, *Q08/028, Q08/031, Q08/033, *Q08/036, Q08/041, Q08/044, *Q08/045, *Q08/053													
Kowhai- manatu- totara	PtQ07/108										PtQ07/108			
Kowhai- totara	<b>PIP07/086</b> , PtP08/028	PtP08/018	*PtQ07/090						<b>PIQ07/095</b>	<b>PIQ07/095</b>	<b>PIP07/086</b> , PtP08/018, PtP08/028	<b>PIP07/086</b>	*PtQ07/090	
Manuka- manatu- totara	<b>PIP07/086</b>										<b>PIP07/086</b>	<b>PIP07/086</b>		
Manuka- totara	PtQ08/002										PtQ08/002			
Nikau-puriri- totara	<b>P08/002</b>													
<i>Phus</i> sp - kanuka/ manuka		PtP08/036		PIP08/036										
Puriri-totara	*P07/183, P08/001, *P08/046	<b>PIQ08/030</b>											<b>PIQ08/030</b>	
Rewarewa- taraire-totara	*Q07/107													
Rimu- kanuka/ manuka	<b>PIQ08/002</b>										<b>PIQ08/002</b>			

Continued on next page

Table 6 continued from previous page

ECOLOGICAL UNIT	MANGAKAHIA COMPLEX		MOTATAU COMPLEX		WAITAKERE GROUP			TANGIHUA COMPLEX		HOLOCENE ALLUVIUM	SWAMP DEPOSITS	QUARTERNARY ALLUVIAL DEPOSITS	ALLUVIUM &/OR COLLUVIAL DEPOSITS
	SANDSTONE & MUDSTONE	MUDSTONE	MUDSTONE & SANDSTONE	MUDDY LIMESTONE	MOTATAU LIMESTONE	ANDESITE	DACITE	BASALTIC BRECCIA &/OR INTRUSIVES	BASIC VOLCANICS				
Rimu-taraire	Q07/098												
Tānekaha-kanuka/manuka	*Q08/028, <b>Q08/029</b>												
Tānekaha-towai		Pt Q07/091										Pt Q07/091	
Tarairē-totara	Pt P07/086, *P07/107, <b>P07/110</b> , *P08/027, *P08/041, <b>Q07/087</b> , *Q08/001		*Q08/001						<b>PtQ07/095</b>	PtP07/086			
Ti kouka-harakeke-kahikatea	Pt P07/091									PtP07/091			
Ti kouka-kahikatea	Pt <b>P07/086</b> , Pt P07/091, <b>PtP07/093</b>	<b>PtP08/015</b>		<b>PtP08/015</b>				<b>PtP08/015</b>		<b>Pt P07/086</b> , Pt P07/091, <b>PtP07/093</b>	<b>PtP07/086</b> , <b>PtP07/093</b>		
Ti kouka-kahikatea-manuka	<b>PtP07/086</b> , PtP07/093									<b>PtP07/086</b> , PtP07/093			
Ti kouka-kahikatea-nikau	<b>P08/002</b>												
Tirok-totara	Q08/026 Pt (QEII)		Pt Q07/091									PtQ07/091	
Totara-kanuka/manuka	Pt P07/086, *P07/089, PtP07/092, P07/109, P08/039, Q08/014, *Q08/020, Q08/026, Q08/034	<b>P08/026</b> , Q08/027		P08/008, PtP08/015	Pt*P08/010					Pt P07/086, PtP07/092			Pt*P08/010
Totara-kowhai	<b>PtQ07/108</b>									<b>PtQ07/108</b>			
Totara-towai	P07/108, *P07/102, Q07/089												

Continued on next page





Table 6 continued from previous page

ECOLOGICAL UNIT	MANGAKAHIA COMPLEX		MOTATAU COMPLEX			WAITAKERE GROUP			TANGIHUA COMPLEX		HOLOCENE ALLUVIUM	SWAMP DEPOSITS	QUARTERNARY ALLUVIAL DEPOSITS	ALLUVIUM &/OR COLLUVIAL DEPOSITS
	SANDSTONE & MUDSTONE	MUDSTONE	MUDSTONE & SANDSTONE	MUDDY LIMESTONE	MOTATAU LIMESTONE	ANDESITE	DACITE	BASALTIC BRECCIA &/OR INTRUSIVES	BASIC VOLCANICS	IGNEOUS ROCKS				
<b>Kauri-broadleaf podocarp</b>														
Kanuka/manuka-kauri-rimu	PtP07/092										PtP07/092			
<b>Freshwater wetland<sup>1</sup></b>														
Alligator weed-parrot's feather-primrose-willow- <i>Persicaria strigosa</i> - <i>Persicaria decipiens</i>	PtP07/086										PtP07/086	PtP07/086		
<i>Baumea-Cyperus</i> sp.	<b>PIP07/086</b>										<b>PIP07/086</b>	<b>PIP07/086</b>		
<i>Baumea rubiginosa</i>	PtP07/091										PtP07/091			
Buttercup-paspalum-willoweed	PtQ08/015												PtQ08/015	
<i>Carex gaudichaudiana</i>	<b>PIP07/086</b>										<b>PIP07/086</b>	<b>PIP07/086</b>		
Open water	Q07/087, Q08/022													
Raupo Surface water-raupo	PtQ08/043											PtQ08/043		
	<b>PIP07/086</b>										<b>Pt P07/086</b>	<b>Pt P07/086</b>		

<sup>1</sup> Does not include forest on alluvium.

TABLE 7. SUMMARY OF SITE EVALUATIONS.

NOTE: e.u. = ECOLOGICAL UNIT, e.us. = ECOLOGICAL UNITS.

SITE	SITE NO.	REPRESENTATIVENESS	RARITY/SPECIAL FEATURES	DIVERSITY & PATTERN (e.us.)	NATURALNESS	BUFFER/LINKAGE/CORRIDOR <sup>1</sup>	SIZE & SHAPE (ha)
<b>LEVEL 1</b>							
Manganui River Complex	P07/086	Rep. site for 27 e.us.	Riverine flood forest. Soil site of regional importance. Flora: 2 At Risk, 16 Regionally significant. Fauna: 6 Threatened, 5 At Risk, 4 Regionally significant	32 <sup>2</sup>	Some invasive exotics/part grazed	Major riverine habitat forming river complex	875.6 (9 remnants)
Kauri Airstrip Remnant	P07/088		Large lowland kauri	2	Very small		2.4
Curnow Road Gemstone Conservation Area	P07/090	Rep. site	Gumland. Flora: 4 At Risk, 1 Data Deficient, 16 Regionally significant. Fauna: 1 Threatened, 1 At Risk	1	Relatively large shrubland area		47.5
Okahu Stream Forest and Surrounds-Wainui Road (Part of the Manganui River Complex)	P07/091		Riverine Forest, includes gumland. Flora: 13 Regionally significant	10		Part of the Manganui River Complex	77.0 (4 remnants)
Wallace Road Bush	P07/092		Riverine forest. Fauna: (reported) 1 Threatened	5		Just south of P07/093	26.9
Okahu Stream Forest and Alluvial Remnants (Part of the Manganui River Complex)	P07/093		Riverine flood forest. Flora: 1 Regionally significant	7		Part of the Manganui River Complex	33.1 (8 remnants)
Maungatawhiri Forest Remnant	P07/096		Kiwi reported	3		Stepping stone	17.8
Turiwiri Scenic Reserve	P07/097	Rep. site	Lowland/large kauri	1	Small		3.8
Rowlands Road Remnant	P07/098	Rep. site for 1 e.u.		2	Small		5.6

<sup>1</sup> Due to the paucity of natural areas in the Tokatoka Ecological District, virtually all remaining sites identified in this report act as important linkages.

<sup>2</sup> Combined ecological units between Part A and Part B of P07/086.

*Continued on the next page*

Table 7 continued from previous page

SITE	SITE NO.	REPRESENTATIVENESS	RARITY/SPECIAL FEATURES	DIVERSITY & PATTERN (e.us.)	NATURALNESS	BUFFER/LINKAGE/CORRIDOR	SIZE & SHAPE (ha)
Hill Road Remnants	P07/100		Large kauri. Flora: 1 Regionally significant Fauna: (historical) 1 Threatened	4			24.8 (2 remnants)
Hoanga Road Shrubland and Forest	P07/101	Rep. site for 5 e.us.	Fauna: 1 Threatened, 2 Threatened (historical)	10	Possibly grazed?	Adjoins Manganui River and Wairoa River	291.5 (4 remnants)
Waima Stream Mouth Remnant	P07/103		Rare e.u.	1		Alongside Wairoa River	2.5
Northern Wairoa River Broadleaf Remnant	P07/104		Rare e.u. Flora: 1 Regionally significant	2		Alongside Wairoa River	5.6
Manganui Trig Forest	P07/108	Rep. site		2			31.9 (2 remnants)
Pukehuia Road Bush	P07/109			3			26.8 (2 remnants)
Boar Stream Bush	P07/110	Rep. site for 1 e.u.	Large totara, rare e.u. Fauna: (historical) 2 Threatened, 1 Regionally significant	3			34.3 (3 remnants)
Girls High School Road Bush	P07/112		Fauna: 1 Threatened	3	Pine forest adjacent		34.1
Omana Lowland Forest Remnant	P07/114	Rep. site	Lowland forest	1	Small		4.0
Rehia Bush and Surrounds	P08/001	Rep. site for 4 e.us.	Old growth forest. Flora: 1 At Risk	8			70.7 (6 remnants)
State Highway 12 Remnants	P08/002	Rep. site for all e.us.	Rare e.u. Lowland forest	4			17.8 (3 remnants)
Greenhill Road Puriri Remnant	P08/004	Rep. site	Rare e.u. Lowland forest	1			6.6
Whenuanui Scenic Reserve	P08/008	Rep. site for 3 e.us.	Lowland forest Flora: 2 At risk, 5 Regionally significant Fauna: 2 Threatened, 1 Regionally significant.	7			40.6
Lower Blong Remnant	P08/012	Rep. site for 1 e.u.	Lowland forest	3			6.1
Tokatoka Scenic Reserve and Surrounds	P08/014	Rep. site for 3 e.us.	Nationally significant geological/landform. Flora: 3 Regionally significant	4		Just south of (P08/015)	40.3 (2 remnants)

Continued on next page

Table 7 continued from previous page

SITE	SITE NO.	REPRESENTATIVENESS	RARITY/SPECIAL FEATURES	DIVERSITY & PATTERN (e.us.)	NATURALNESS	BUFFER/LINKAGE/CORRIDOR	SIZE & SHAPE (ha)
Berghans Bush and Surrounds	P08/015	Rep. site for 4 e.us.	Nationally significant geological/landform. Rare vegetation types. Fauna: (historical) 1 Threatened, 1 Regionally significant	6			72.0 (3 remnants)
Dreadon Road Bush	P08/017	Rep. site	Lowland forest	2		Adjacent remnants	8.7 (2 remnants)
Ringrose Road Remnants	P08/018	Rep. site for 2 e.us.	Riverine forest	10			29.7 (3 remnants)
Bentley Road Bush	P08/019		Includes alluvial forest	6		Extension of P08/018	37.3 (2 remnants)
Lusk Road Bush	P08/024	Rep. site for 1 e.u.	Fauna: 2 Threatened, 2 Regionally significant	7		Close proximity to other habitat	118.3 (5 remnants)
Mititai/Okahu Stream Remnants	P08/025	Rep. site for 1 e.u.	Rare e.u. Flora: 1 Regionally significant	2			16.0 (2 remnants)
Kauri Hill Bush Remnants	P08/026	Rep. site for 3 e.us.	Flora: 1 Regionally significant. Fauna: 1 Threatened	7			45.3 (3 remnants)
Tokatoka Road Remnant	P08/028		Rare e.u. Flora: 1 Regionally significant	2	Some exotics		20.4
Tokatoka Road Hillslope Forest	P08/030	Rep. site for 3 e.us.		5			9.5 (5 remnants)
Inch Road Remnant	P08/032		Lowland forest	2			4.7
Maungaraho Rock Scenic Reserve and Surrounds	P08/034	Rep. site for 4 e.us	Geopreservation site of national importance. Site of endemic plant. Flora: 4 Threatened; 1 At Risk, 6 Regionally significant	8	Some exotics		16.6 (2 remnants)
Montgomerys Memorial Bush Scenic Reserve and Surrounds	P08/036	Rep. site for 3 e.us.	Soil site of regional importance. Fauna: 1 Regionally significant	7	Pine e.u.		28.7 (2 remnants)
Tokatoka Road Riverine Remnant	P08/038		Riverine forest	1			5.5
Te Whiro Bush and Surrounds	P08/039		Fauna: (historical) 1 Threatened, 2 Regionally significant	2			34.2 (5 remnants)
Tokatoka/Okahu Stream Remnants (Part of the Manganui River Complex)	P08/043	Rep. site for 1 e.u.	Rare e.us.	5	Pine adjoins		10.5 (5 remnants)

Continued on next page

Table 7 continued from previous page

SITE	SITE NO.	REPRESENT-ATIVENESS	RARITY/SPECIAL FEATURES	DIVERSITY & PATTERN (e.us.)	NATURAL-NESS	BUFFER/LINKAGE/CORRIDOR	SIZE & SHAPE (ha)
Okahu Bush	P08/044		Fauna: (historical) 1 Regionally significant	2			9.8
Hamlyns Bush Scenic Reserve	P08/047	Rep. site	Unusual forest association	1			3.0
Waiotira Road Bush	Q07/086	Rep. site for 1 e.u.	Fauna: 2 Threatened, 1 Regionally significant	4	Borders exotic plantation (northeastern end)	Corridor link between habitats	32.4
Newmans Bush	Q07/087		Flora: 4 regionally significant. Fauna: 1 Regionally significant	2 Forest/ open water wetland		Forest adjoins wetland	10.8 (2 remnants)
Taipuha Road Bush	Q07/088	Rep. site	Lowland forest	1			7.5 (2 remnants)
Hartnell Road Bush	Q07/089		Fauna: 1 Regionally significant	5	3 separate remnants, exotics present		79.3 (3 remnants)
Bartlett Road Bush	Q07/091	Rep. site for 4 e.us.	Riparian forest. Flora: 1 Regionally significant Fauna: 1 Threatened (historical) 1 Regionally significant	10 Riverine/ kauri/ podocarp- broadleaf/ shrubland	Exotics/ weeds in riparian areas	Waiotira Stream connects with the Manganui River Complex	88.4 (2 remnants)
Tauraroa Bush	Q07/092	Rep. site for 2 e.us.	Fauna: 1 Threatened	3	Partly fenced/ winter grazing, some exotics	Within close proximity to the Tangihua Range	32.0
Omana Road Bush	Q07/093		Rare forest type. Fauna: 1 Regionally significant	2	Grazed?		5.8
Pikiwahine Bush Remnants	Q07/094	Rep. site	Flora: Old growth kahikatea/kauri. Fauna: (historical) 1 Threatened, 1 Regionally significant	1	Exotics on margins	Just south of Tangihua Range	11.1 (2 remnants)
Pikiwahine Railway Bush Remnant	Q07/095	Rep. site	Fauna: 1 Regionally significant	4		Steep hillslope arising from Tauraroa River (part of Manganui River Complex)	7.6
Pighouse Stream Bush Remnant	Q07/097		Unmodified forest. Fauna: (historical) 1 Threatened and 1 Regionally significant	1	Fenced. Exotics on margins	Hillslope arising from Pighouse Stream	15.1
Upper Mititai Road Bush	Q07/098	Rep. site for 1 e.u.	Fauna: 1 Threatened	5	Partially fenced? Pine plantation borders		72.6 (3 remnants)
Waikeikei Bush Remnant	Q07/100	Rep. site for 1 e.u.		4			17.9

Continued on next page

Table 7 continued from previous page

SITE	SITE NO.	REPRESENTATIVENESS	RARITY/SPECIAL FEATURES	DIVERSITY & PATTERN (e.us.)	NATURALNESS	BUFFER/LINKAGE/CORRIDOR	SIZE & SHAPE (ha)
Mititai Road Forest (Part of Manganui River Complex)	Q07/103		Flora: 1 Regionally significant	3		Riverine flood forest	28.8
Tauraroa Riverine Remnants	Q07/108	Rep. site for 2 e.us.	Riverine forest. Flora: 1 Regionally significant	5	Open sub-canopy	Part of Manganui River Complex	25.3 (5 remnants)
Hilford Road Remnants	Q07/179		Mature forest	2			7.7 (3 remnants)
Paiawa Road Forest (Part of Manganui River Complex)	Q08/002	Rep. site for 4 e.us.	Riverine flood forest. Flora: 5 Regionally significant	5		Part of Manganui River Complex	42.5
Paiawa Hill Forest Remnant	Q08/003	Rep. site for 1 e.u.	Landmark feature	2	Exotics present	Adjacent to Manganui River Complex	10.9
Ararua North Forest Remnants (Part of Manganui River Complex)	Q08/004	Rep. site for 1 e.u.	Rare forest types	3		Part of Manganui River complex	56.0 (3 remnants)
Ararua South Forest Remnants	Q08/005	Rep. site for 1 e.u.		3			92.7 (8 remnants)
Parahi Scenic Reserve and Surrounds	Q08/010	Rep. site for 5 e.us.	Soil site of regional importance. Fauna: (historical) 2 threatened, 1 Regionally significant	9	Exotics present	Relatively large forested remnant	148.2 (5 remnants)
Paparoa Stream Remnant	Q08/011		Fauna: 1 Regionally significant	1	Small		8.2
Paparoa/Oakleigh Road QEII Forest Remnants	Q08/012			1	2 small remnants		11.6 (2 remnants)
Ararua Road Bush	Q08/014	Rep. site for 1 e.u.		5	Partially cut over	Corridor linkage	60.4
Parkers Road Bush	Q08/015	Rep. site for 2 e.us.	Fauna: 1 Threatened 1 Regionally significant. Historical: 1 Threatened, 1 Regionally significant	5 Kauri/ podocarp/ broadleaf/ wetland	Exotics present	Alongside Omaru River, part of Manganui Complex	39.2
Poyner Road Remnant	Q08/017	Rep. site	Large kauri	1	Small		3.7 (2 remnants)
Bull Road Bush	Q08/018	Rep. site	Lowland podocarp/ broadleaf forest. Flora: 1 Regionally significant	1		Adjacent to part of Manganui River Complex	5.8

Continued on next page

Table 7 continued from previous page

SITE	SITE NO.	REPRESENTATIVENESS	RARITY/SPECIAL FEATURES	DIVERSITY & PATTERN (e.us.)	NATURALNESS	BUFFER/LINKAGE/CORRIDOR	SIZE & SHAPE (ha)
Manganui-Taylor's Road Bush and Surrounds	Q08/019	Rep. site for 1 e.u.	Flora: 2 Regionally significant. Fauna: (historical) 1 Threatened, 2 Regionally significant	8	Some pampas	Associated with Manganui River Complex, close proximity to large protected area Q08/022	209.3 (7 remnants)
Lindquist Road Bush	Q08/021		Large shrubland area	4	Exotics present		131.9 (6 remnants)
Pukekohe Hill Scenic Reserve and Surrounds	Q08/022	Rep. site for 8 e.us.	Soil site of regional importance. Part unmodified. Flora: 3 Regionally significant. Fauna: 1 Threatened, 1 Regionally significant. Historical: 4 Threatened, 2 At risk	12 Shrubland/ kauri/ podocarp/ broadleaf/ wetland	Part fenced	Corridor, large forested area	209.1 (3 remnants)
Upper Arcadia Road Bush Remnant	Q08/023	Rep. site for 1 e.u.		4	Part cut over		85.0
Taipuha Bush	Q08/024	Rep. site for 1 e.u.	Lowland forest	2	Some exotics. Grazed?		13.0
Cross Family Trust Covenant and Surrounds	Q08/025	Rep. site	Fauna: 1 threatened, 1 Regionally significant	3		Just south of Mareretu Forest	12.6 (3 remnants)
McCarroll Gap Bush Remnants	Q08/026	Rep. site for 1 e.u.	Riverine forest e.u.	8	Exotics present, cut over, fragmented		88.7 (7 remnants)
Mareretu Bush Remnants	Q08/027	Rep. site for 1 e.u.		7	Some exotics		40.1 (7 remnants)
Golf Course Road Remnants	Q08/029	Rep. site for 1 e.u.		6	3 remnants, some exotics		25.2 (3 remnants)
Smoky Hill Scenic Reserve and Surrounds	Q08/030	Rep. site for 9 e.us.	Flora: 1 At Risk; 4 Regionally significant. Fauna: (historic) 2 Threatened, 1 Regionally significant	12	Corridor, large forested habitat		153.8 (2 remnants)
Lower Arcadia Road Remnants	Q08/031	Rep. site for 1 e.u.	Large kauri. Flora: 1 Regionally significant Fauna: 1 Regionally significant	4	Collection of small remnants		87.3 (12 remnants)
Franklin Road Bush	Q08/032	Rep. site for 1 e.u.		6	Some exotics		41.2 (2 remnants)
Waipikopiko Stream Remnants	Q08/033	Rep. site for 1 e.u.		4	Exotics, pines border		46.6

Continued on the next page

Table 7 continued from previous page

SITE	SITE NO.	REPRESENT-ATIVENESS	RARITY/SPECIAL FEATURES	DIVERSITY & PATTERN (e.us.)	NATURAL-NESS	BUFFER/LINKAGE/CORRIDOR	SIZE & SHAPE (ha)
Wairere Valley Bush Remnant	Q08/034		Fauna: 1 Threatened	4			48.0
Lower Bull Road Bush	Q08/035	Rep. site for 2 e.us.	Rare e.u.	5	Exotics	Close to large forest habitat Q08/022	35.1
Wearmouth Road Bush	Q08/039		Lowland forest	4	Fenced		41.0 (3 remnants)
Arcadia Kauri Bush	Q08/040		Kauri. Flora: Flora: 1 Regionally significant	3	Small, cut over		9.2
Kauri Bushmans Memorial Scenic Reserve and Surrounds	Q08/041	Rep. site for 1 e.u.	Mature kauri	5	Some exotics outside of reserve		27.4
Pasley Road Remnants	Q08/042			1	Many small remnants		31.6 (10 remnants)
Tana Road Shrubland	Q08/043	Rep. site for 2 e.us.		3 Shrubland/ wetland	Exotics present		52.2
Porter Road Hillslope Remnants	Q08/044			3	Adjacent to the Omaru River		22.0 (2 remnants)
Golden Stairs Road Bush	Q08/051	Rep. site		1			29.4
<b>Total Level 1 sites (89 sites)</b>							<b>4653.1</b>
<b>LEVEL TWO</b>							
Mangarata Remnant	P07/020			1			26.3
Wainui Shrubland	P07/087			2			12.7
Curnow Road Hillslope Remnants	P07/089			1			23.4 (2 remnants)
North Pole Road Remnants	P07/094			4			37.0 (3 remnants)
Pukehuia Kahikatea Remnant	P07/095		Rare e.u.	1	Small	In association with the Manganui River Complex	0.6
Turiwiri Remnants	P07/098a			1	Small		5.1 (4 remnants)
Clear Road Shrubland	P07/099			1	Small cutover		8.7

Continued on the next page



Table 7 continued from previous page

SITE	SITE NO.	REPRESENTATIVENESS	RARITY/SPECIAL FEATURES	DIVERSITY & PATTERN (e.us.)	NATURALNESS	BUFFER/LINKAGE/CORRIDOR	SIZE & SHAPE (ha)
Pukehuia Hill Bush	P07/102			3	Some exotics	Adjoins Manganui River	12.8 (2 remnants)
Spence's Bush	P07/105		Fauna: 1 Regionally significant	1		Hillslope alongside tributary of Wairoa River	11 (2 remnants)
Windy Hill Remnants	P07/106			2	Small		18 (4 remnants)
Pukehuia Remnants	P07/107			1	Small	Associated with Manganui River	13.7 (3 remnants)
Stills Bush	P07/113			1	Small	Hillslope adjacent to Manganui River	4.5
Young Road QEII Remnant	P07/116		Fauna: 1 regionally significant	1	Small		7.7
Hoanga Road Remnants	P07/117			4			51.8 (7 remnants)
Hill Road Forest Remnants	P07/118			1	Small		13.6 (5 remnants)
Omana Remnant	P07/119			1			6.8
Kiriopuni Station Road Covenant	P07/183			1	Small	Adjacent to Wairoa River	2.3
Greenhill Road Shrubland	P08/003			2	Exotics present		15.4
Oparakau Road Shrubland	P08/005			2	Small		9.9 (2 remnants)
Maheno Remnants	P08/006		Uncommon e.u.	4	Small		20.8 (5 remnants)
Waikaraka Remnants	P08/007		Uncommon e.u.	2	Small		5.5 (3 remnants)
Rehia Road Remnant	P08/009			1	Small		3.2
Shirley Road Remnant	P08/010		Lowland regenerating forest	1			6.4
Molloy Road Remnant	P08/011		Lowland	1	Very small		0.8
Tokatoka Remnants	P08/012a			3	Small		4.2 (2 remnants)
Blong Road Remnants	P08/013			2	Exotics present		29.1 6 remnants

Continued on the next page

Table 7 continued from previous page

SITE	SITE NO.	REPRESENT-ATIVENESS	RARITY/SPECIAL FEATURES	DIVERSITY & PATTERN (e.us.)	NATURAL-NESS	BUFFER/LINKAGE/CORRIDOR	SIZE & SHAPE (ha)
Simpkin Road Bush	P08/016			2			14.6 (3 remnants)
Bradley Road Remnants	P08/020		Rare e.u.	3	Small		4.8 (2 remnants)
North Pole Alluvial and Hillslope Remnants	P08/021		Rare e.u.	2	Small		6.3 (3 remnants)
Airstrip Remnant	P08/027			1			10.2
Access Road Remnants	P08/029			1	Small		9.0 (2 remnants)
Mititai Road Kahikatea Remnant	P08/031		Rare e.u.	1	Small		1
Mititai Remnants	P08/035			1	Small		7.0 (2 remnants)
Lower Mititai Road Remnants	P08/037		Lowland forest	3	Small		4.8 (2 remnants)
Bee Bush Road Remnants	P08/040			2	Small		4.3
Lower Wainui Road Remnant	P08/041			3		Adjacent to kiwi habitat	14.6
Hoyle Road Remnants	P08/042		Lowland forest	2	Small		3.1 (2 remnants)
Onewa Remnants	P08/045			2			27.0 (4 remnants)
Okahu Airstrip Remnant	P08/046			1			9.5
Arapohue Road Remnants	P08/048		Rare e.u.	2	Small		3.6 (2 remnants)
Waiwhakangari Stream Forest Remnants	Q07/090		Riverine forest. Flora: 1 Regionally significant	2	Small, exotics present		13.8 (3 remnants)
Mason Road Bush	Q07/096			2	Small		7.0
Mititai Golf Course Remnant	Q07/099			2	Small, pines border western side		6.2
Upper Ararua Road Bush Remnants	Q07/101			2	Small	Surrounded by farmland	11.0 (2 remnants)
Waikiekie Remnants	Q07/104		Flora: 1 Regionally significant. Fauna: 1 regionally significant	1	Small		12.5 (2 remnants)

Continued on the next page

Table 7 continued from previous page

SITE	SITE NO.	REPRESENT-ATIVENESS	RARITY/SPECIAL FEATURES	DIVERSITY & PATTERN (e. us.)	NATURAL-NESS	BUFFER/LINKAGE/CORRIDOR	SIZE & SHAPE (ha)
Mititai Road Remnant	Q07/105		Fauna: 1 Regionally significant	2	Small		4.1 (2 remnants)
Waiotira Kahikatea Remnant	Q07/106		Rare e.u.	1	Small, amongst pasture		1.4 (2 remnants)
Mititai Remnant	Q07/107			2	Small		9.5
Mititai Road Forest Remnants	Q07/175			1	Small	Alluvial	4.7 (2 remnants)
Mason Road Remnants	Q07/178			3	Small		10.7 (3 remnants)
Omana Road Covenant	Q07/180			1	Small		1.5
Pukekohe Covenants	Q08/001			1	Small	Close to Pukekohe Scenic Reserve	8.5 (2 remnants)
Mason Road Covenant	Q08/055			1	Small		2.4
Smith Road Remnants	Q08/006			4	Collection of small remnants	Within close proximity to known kiwi habitat Q08/010	36.0 (4 remnants)
Parahi Road Remnant	Q08/007			1	Small	Within close proximity to known kiwi habitat Q08/010	7.7
Upper Page Road Remnants	Q08/008			1	Small	Hillslope adjacent to Manganui River Complex	10.9
Mid Ararua Road Bush Remnants	Q08/013		Riverine e.u. Flora: 1 Regionally significant	3			30.7 (3 remnants)
Birch Road QEII Forest Remnants	Q08/016		Fauna: 1 regionally significant	2	Small		18.9 (9 remnants)
Mid Bull Road Bush Remnant	Q08/020			1	Small area		5.2
Southern Kaikowhiti Stream Remnants	Q08/028			3	kauri-podocarp		17.4 (2 remnants)
Gillon Road Remnants	Q08/036		Lowland forest	2 e. u.s			21.0 (3 remnants)
Paparoa Station Road Bush	Q08/037			3	Fragmented/cut over		10.3

Continued on the next page

Table 7 continued from previous page

SITE	SITE NO.	REPRESENT-ATIVENESS	RARITY/SPECIAL FEATURES	DIVERSITY & PATTERN (e.us.)	NATURAL-NESS	BUFFER/LINKAGE/CORRIDOR	SIZE & SHAPE (ha)
Paparoa Remnants	Q08/038			6 Shrubland/ forest	Cut over, exotics present		50.5 (3 remnants)
Gillon Road Bush	Q08/045			1	Small		4.9
Ovens Road Remnant	Q08/046			1	Small		10.6
Ball Road Remnants	Q08/047			2		Corridor	10.9 (2 remnants)
Lower Wearnmouth Road Remnant	Q08/049			2	Some pine		19.5
Kirk Road Hillslope	Q08/050			1			9.4
Powell Road Remnant	Q08/052			3	Small		7.2
Bellamy Road Remnants	Q08/053			1	Small	Adjacent to large shrubland area Q08/043	8.6 (2 remnants)
Golden Stairs Road Kahikatea Remnant	Q08/054		Rare e.u.	1	Small		10.6 (2 remnants)
Poyner Road Shrubland	Q08/056		Possibly gumland	2	Small, isolated		8.1
<b>Total Level 2 sites (72 sites)</b>							<b>861.8</b>