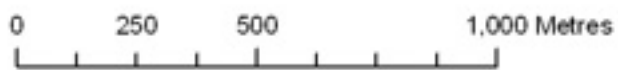
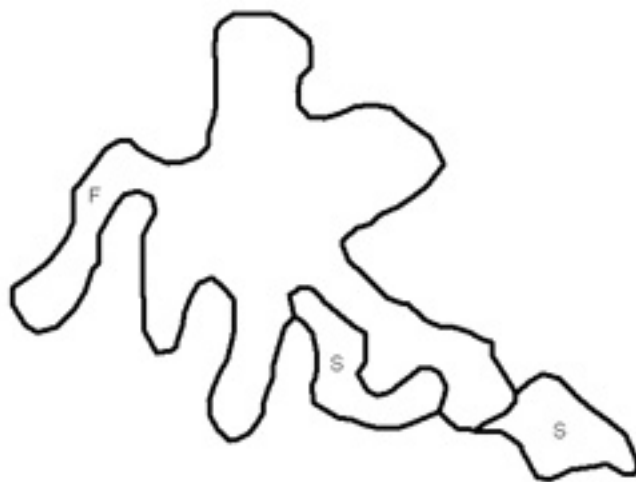
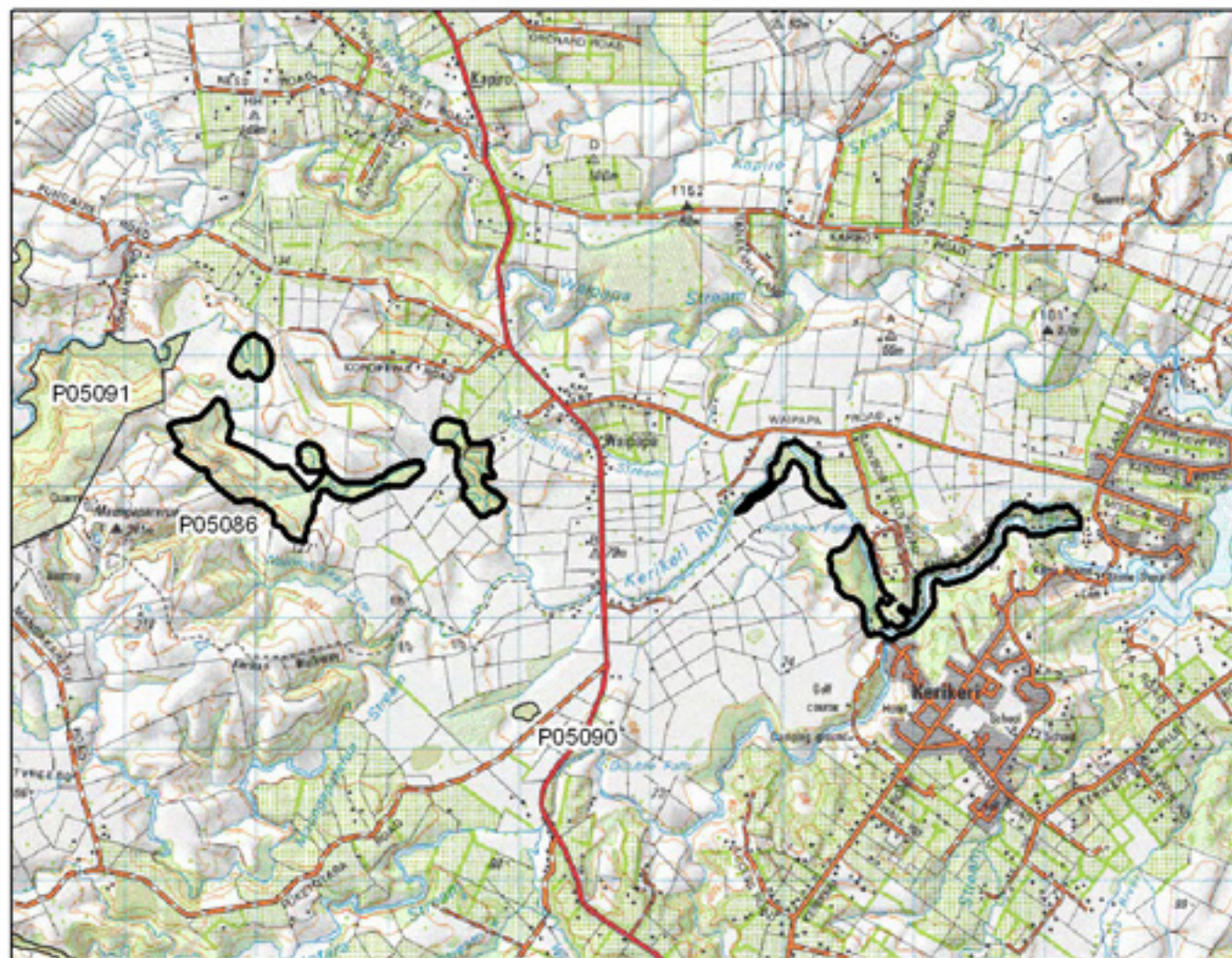


P05085 Waitangi River Alluvial Remnants

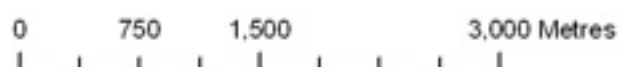


- S= Shrubland
- F= Forest
- W= Wetland
- E= Estuarine





P05086 Kerikeri River Riparian Remnants



S= Shrubland
 F= Forest
 W= Wetland
 E= Estuarine



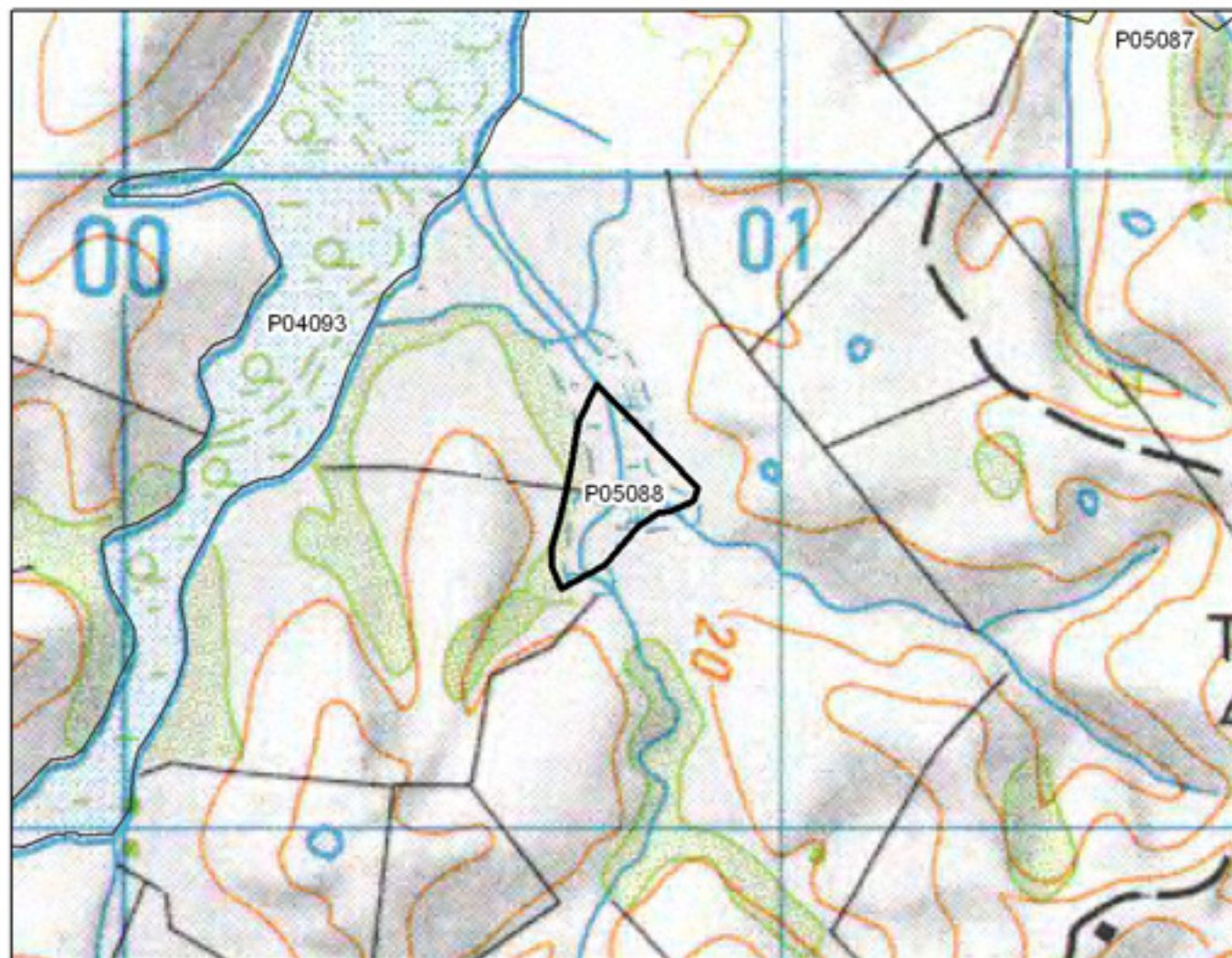


P05087 Rangitane Shrublands

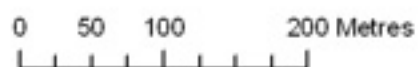
0 500 1,000 2,000 Metres

S= Shrubland
 F= Forest
 W= Wetland
 E= Estuarine



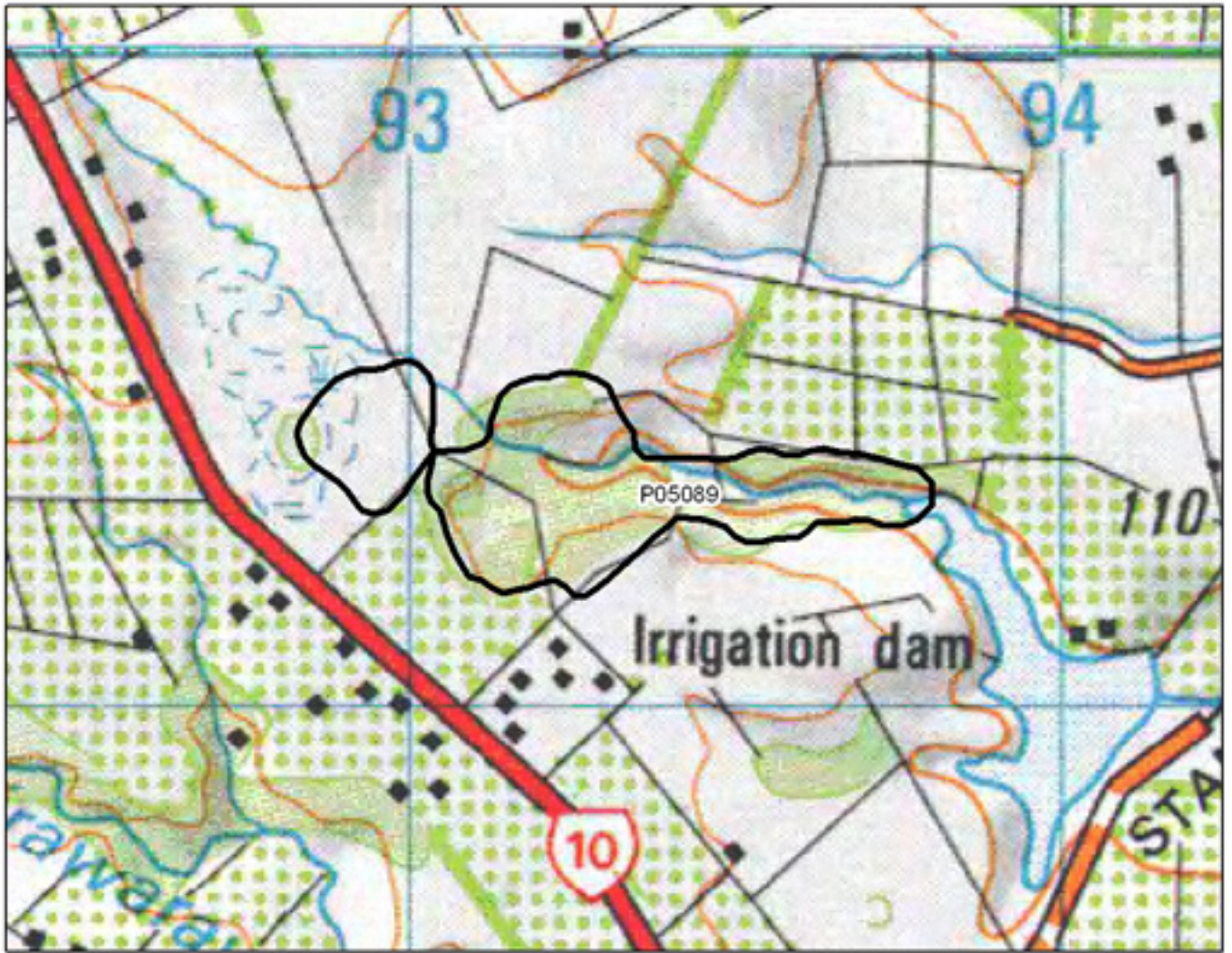


P05088 Te Aiorua Creek Wetland Remnant

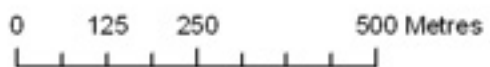


- S= Shrubland
- F= Forest
- W= Wetland
- E= Estuarine

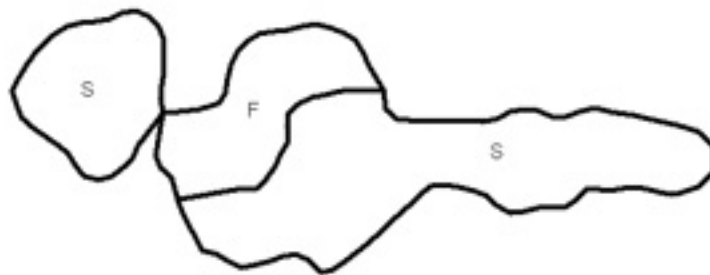


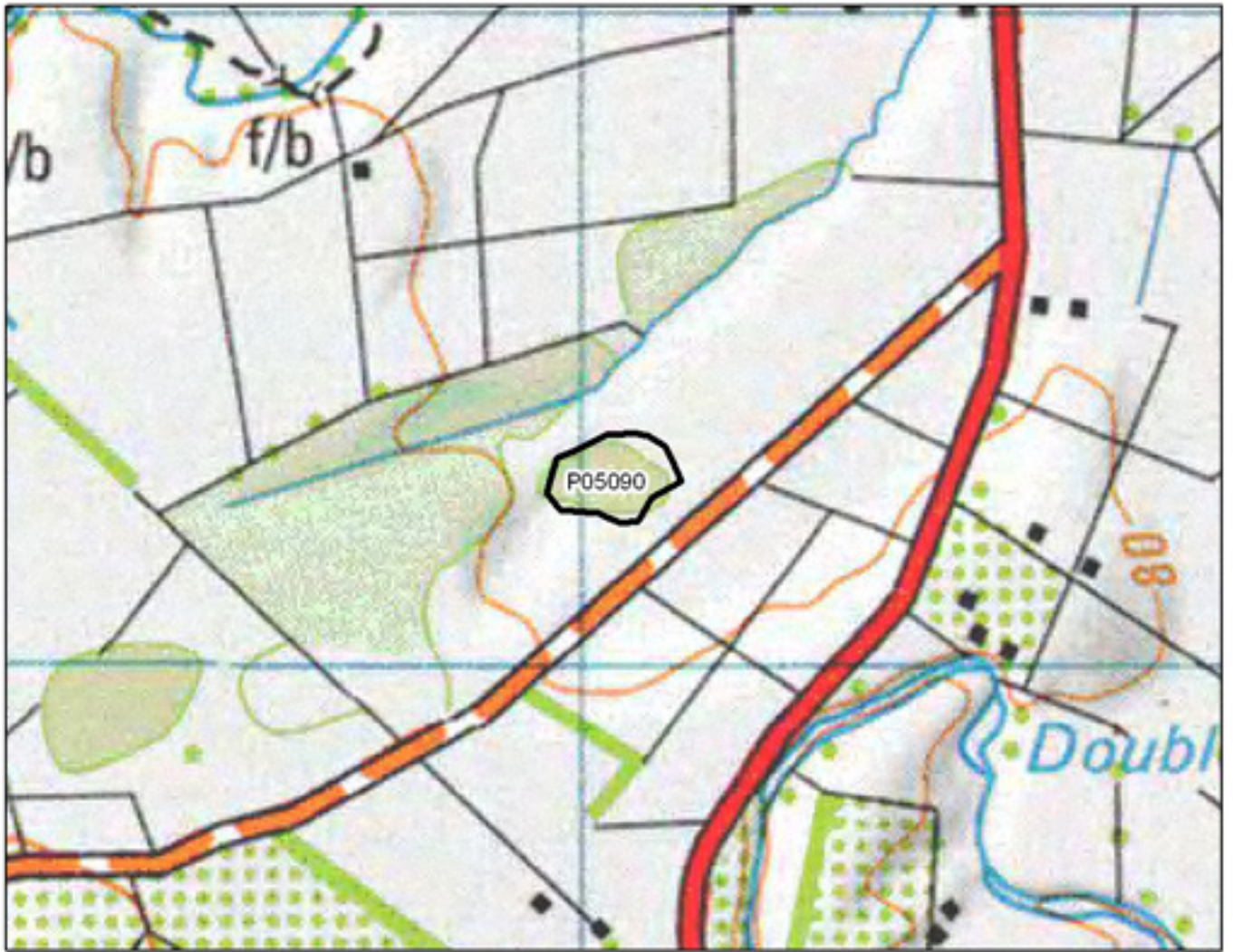


P05089 Stanners Road Remnant

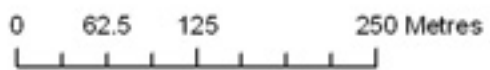


- S= Shrubland
- F= Forest
- W= Wetland
- E= Estuarine



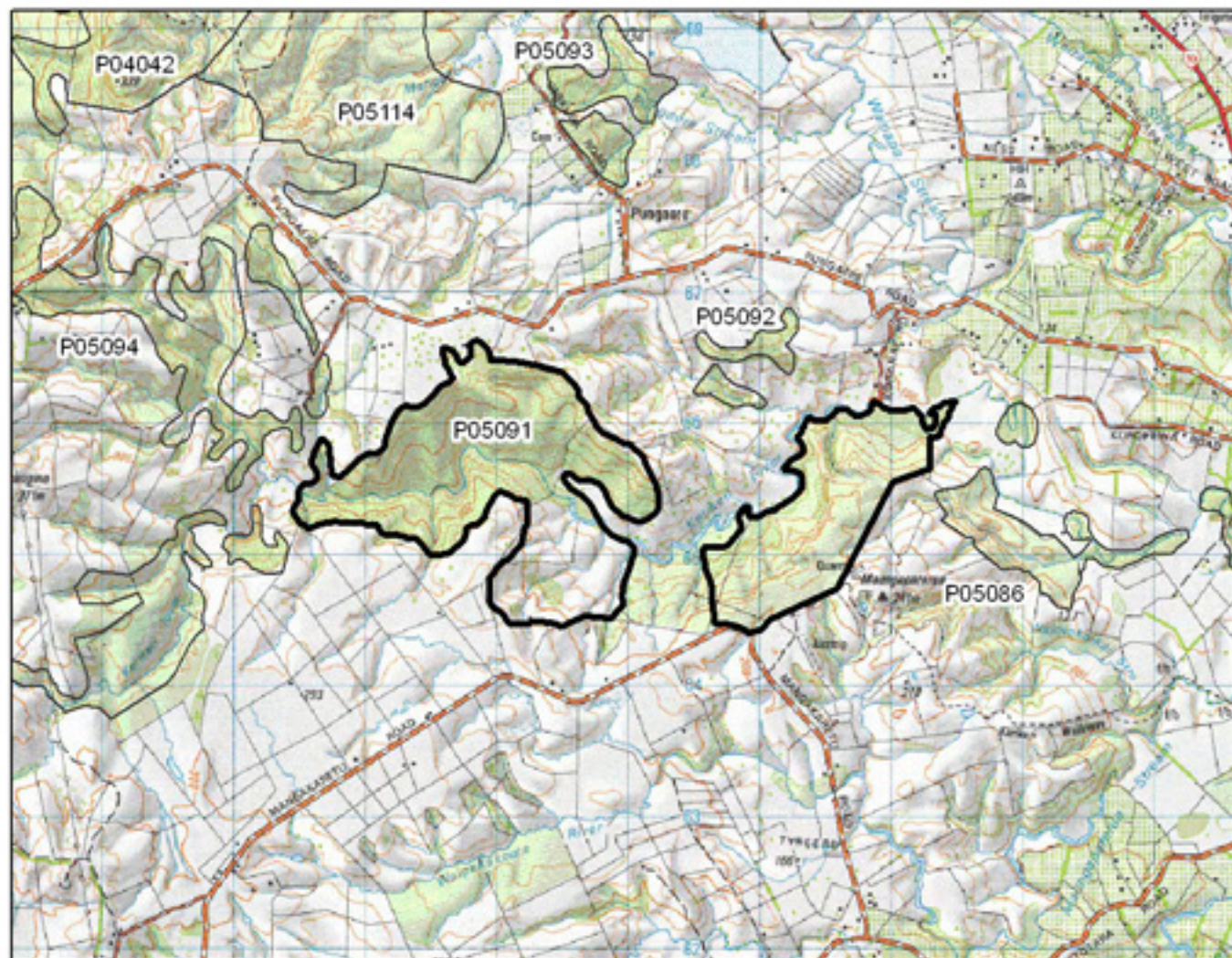


P05090 Puketotara Road Alluvial Remnant

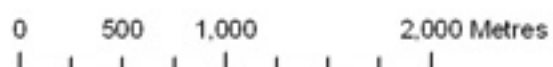


- S= Shrubland
- F= Forest
- W= Wetland
- E= Estuarine

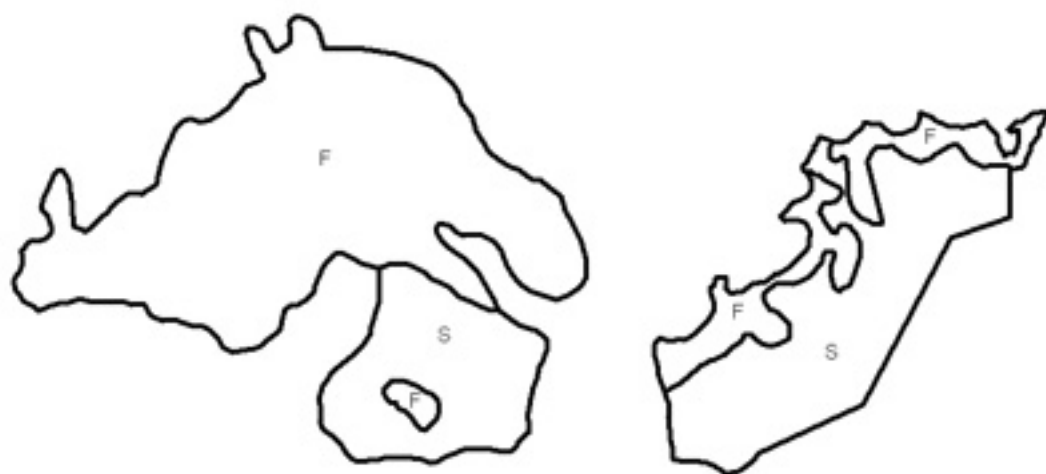


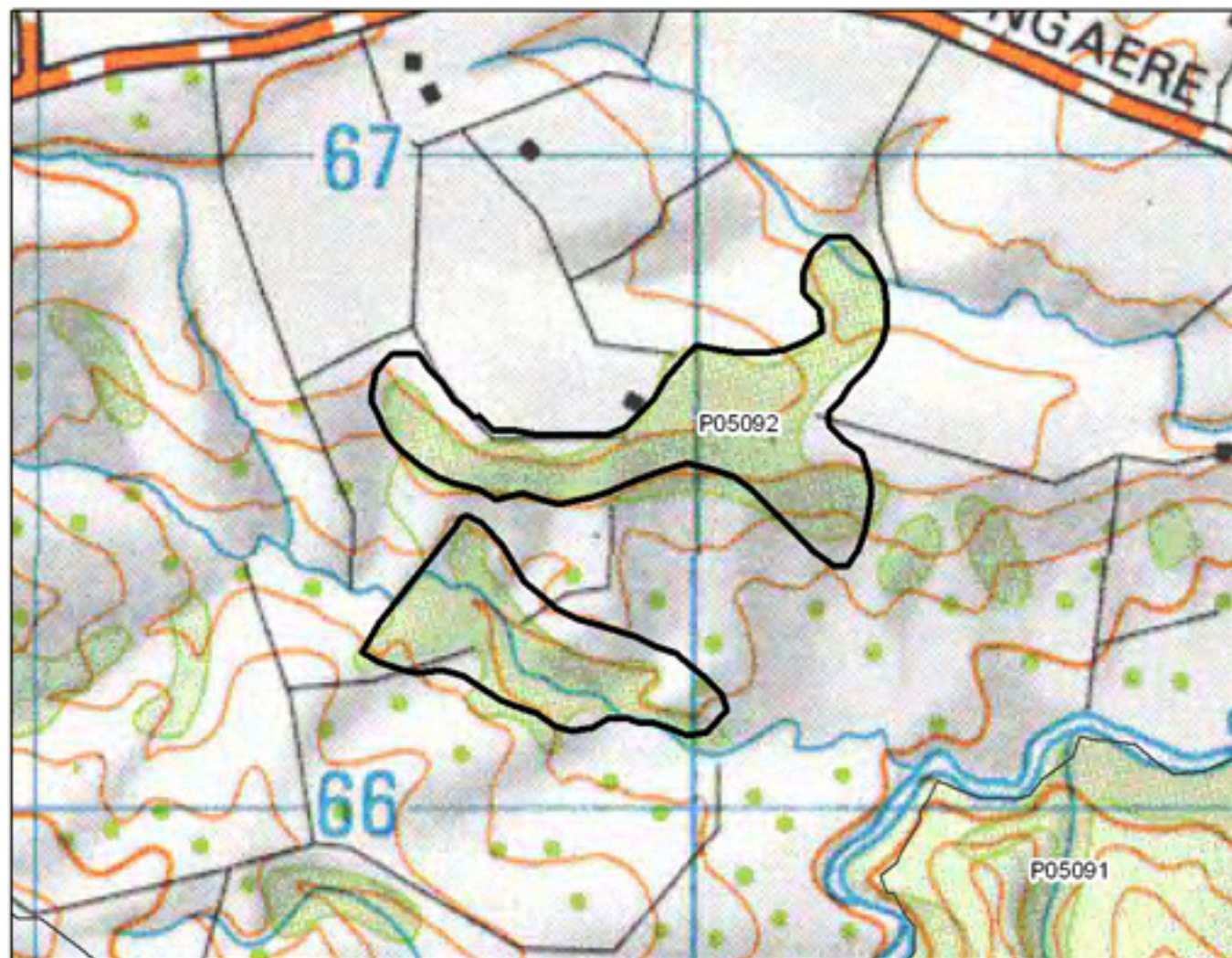


P05091 Kerikeri Stream Bush



- S= Shrubland
- F= Forest
- W= Wetland
- E= Estuarine

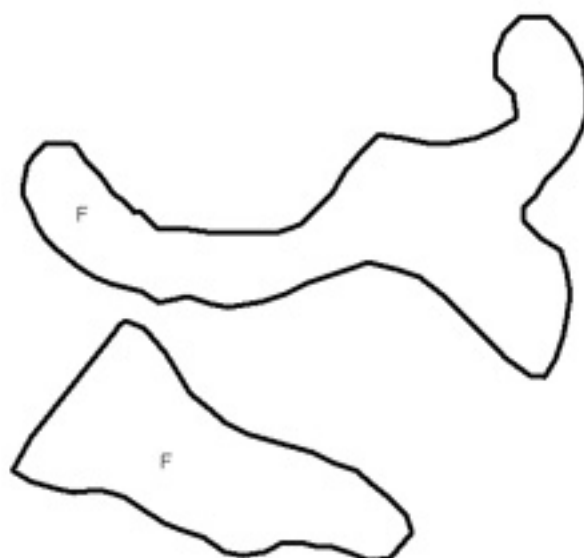


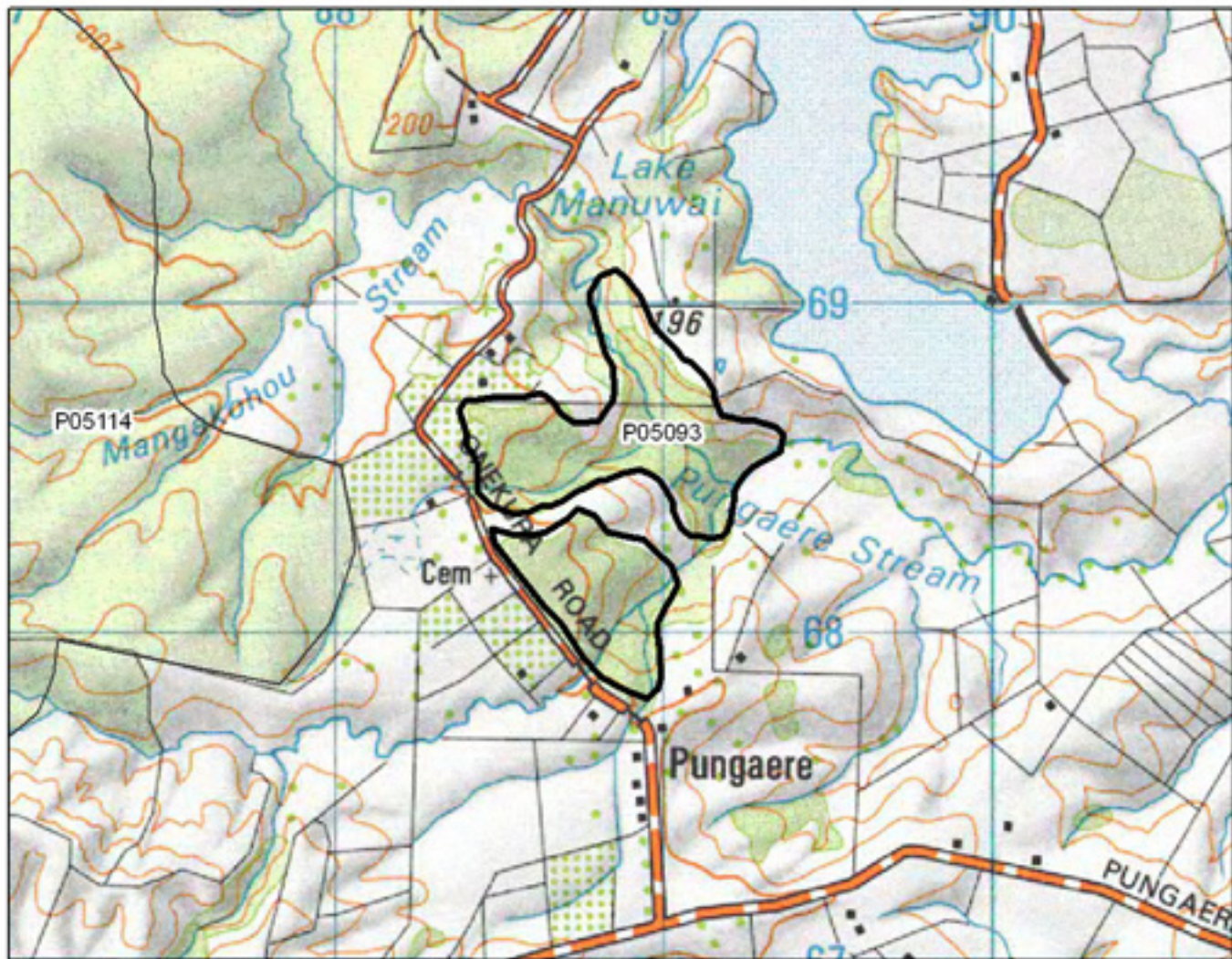


P05092 Pungaere Road Bush

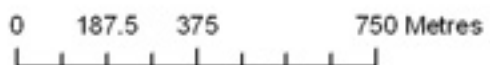
0 125 250 500 Metres

S= Shrubland
 F= Forest
 W= Wetland
 E= Estuarine

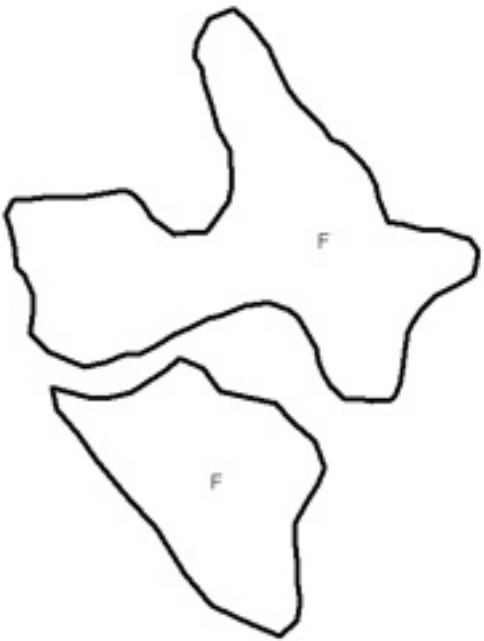


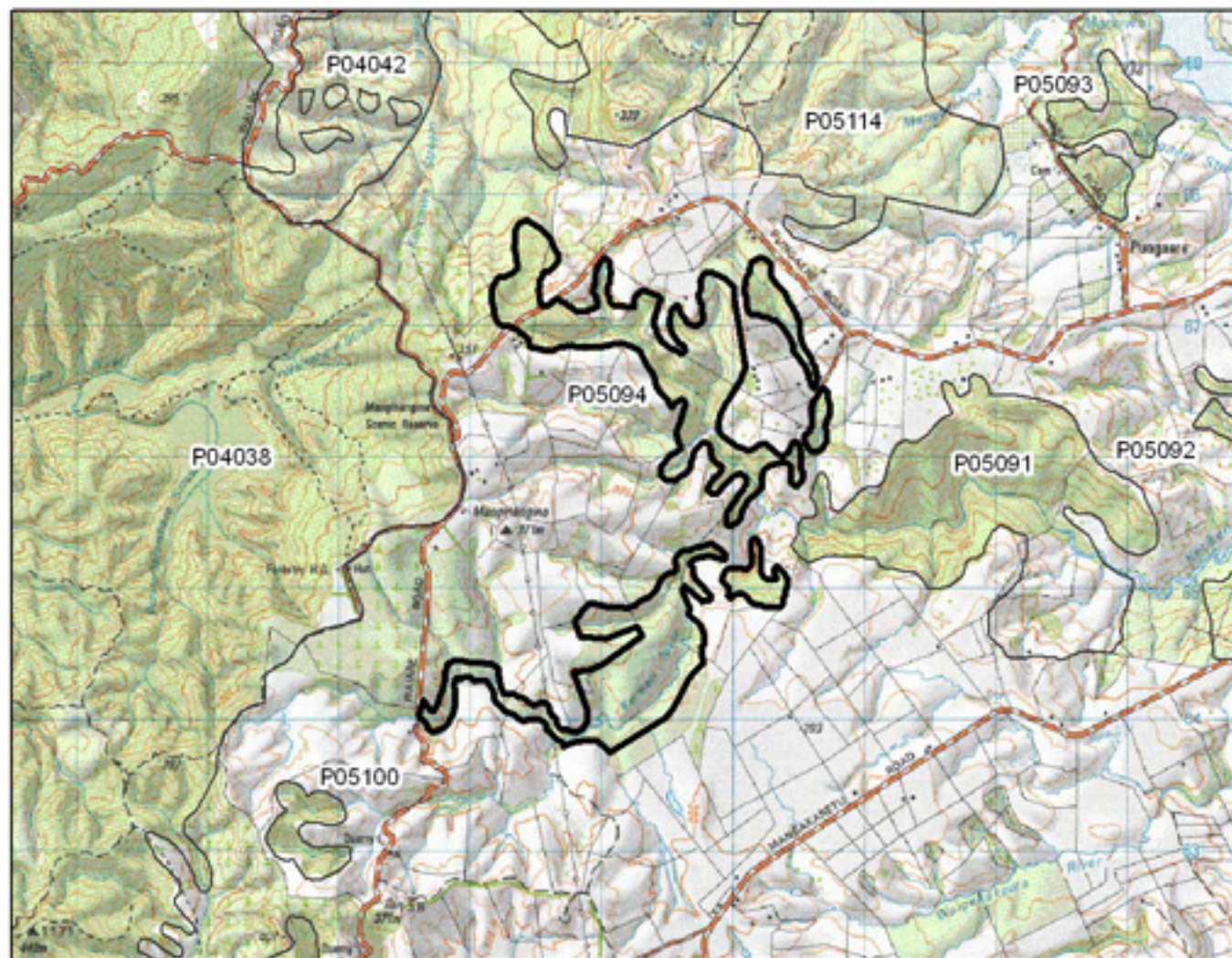


P05093 Pungaere Stream Bush



- S= Shrubland
- F= Forest
- W= Wetland
- E= Estuarine





P05094 Upper Kerikeri Stream Bush

0 375 750 1,500 Metres

S= Shrubland
 F= Forest
 W= Wetland
 E= Estuarine

