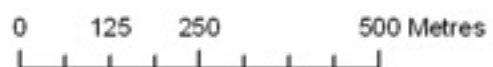
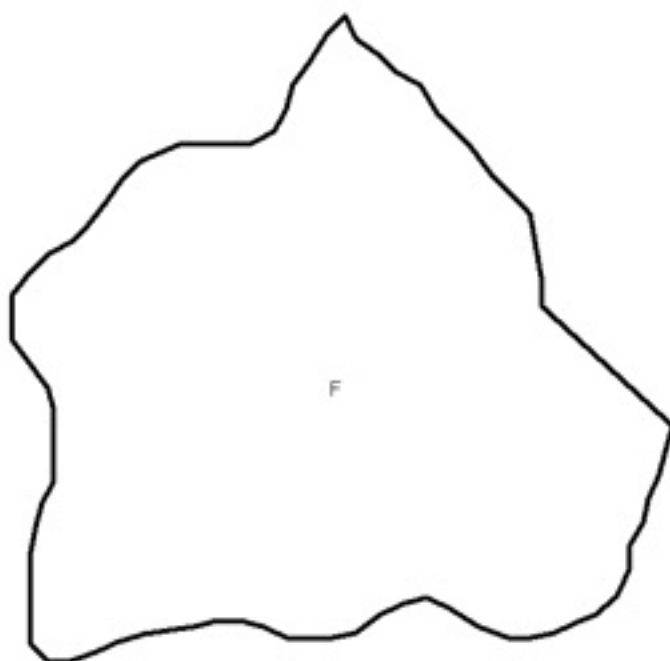
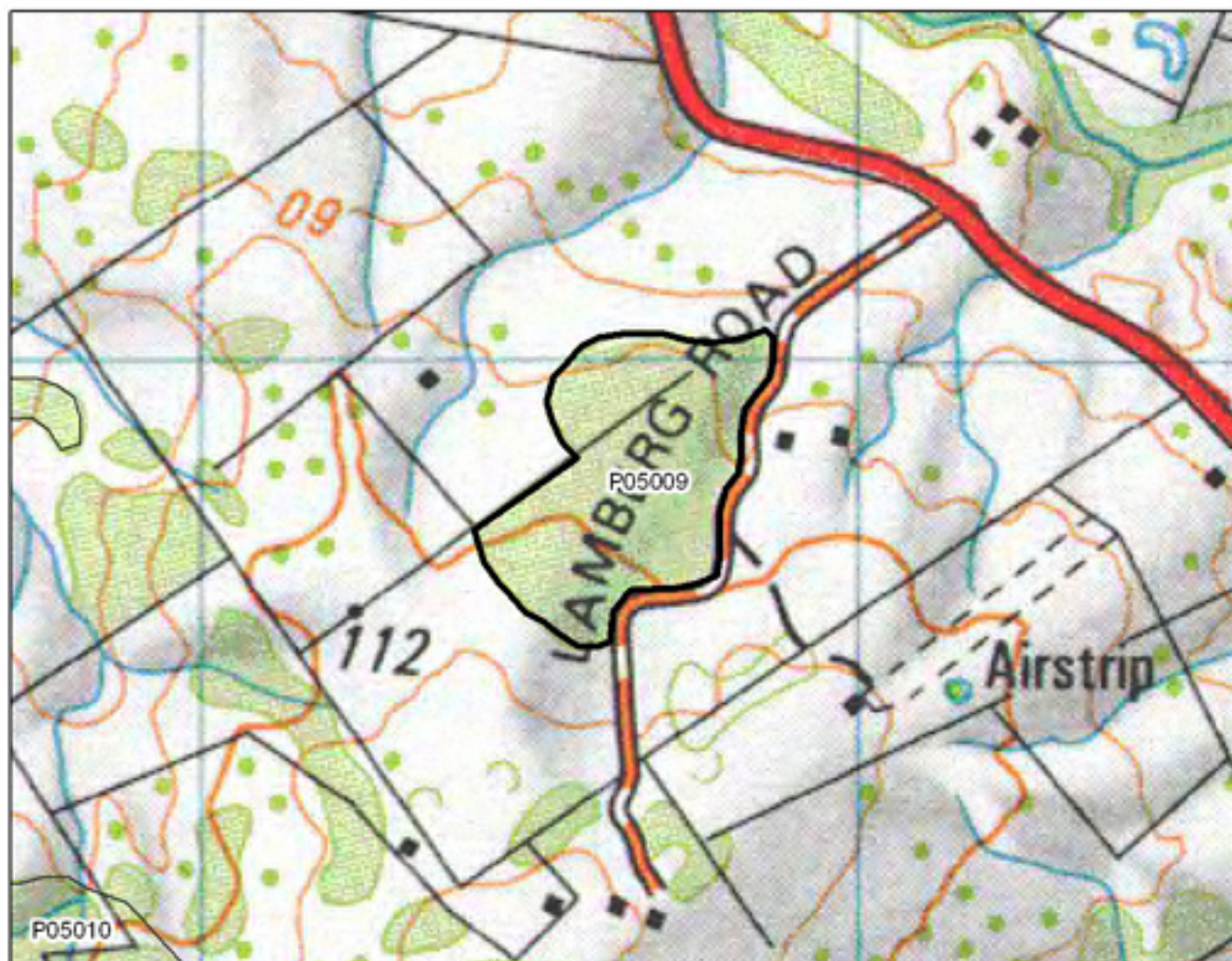


P05008 Waihoanga Stream Forest Outlier

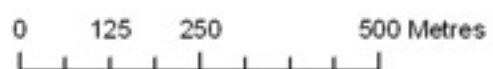


- S= Shrubland
- F= Forest
- W= Wetland
- E= Estuarine



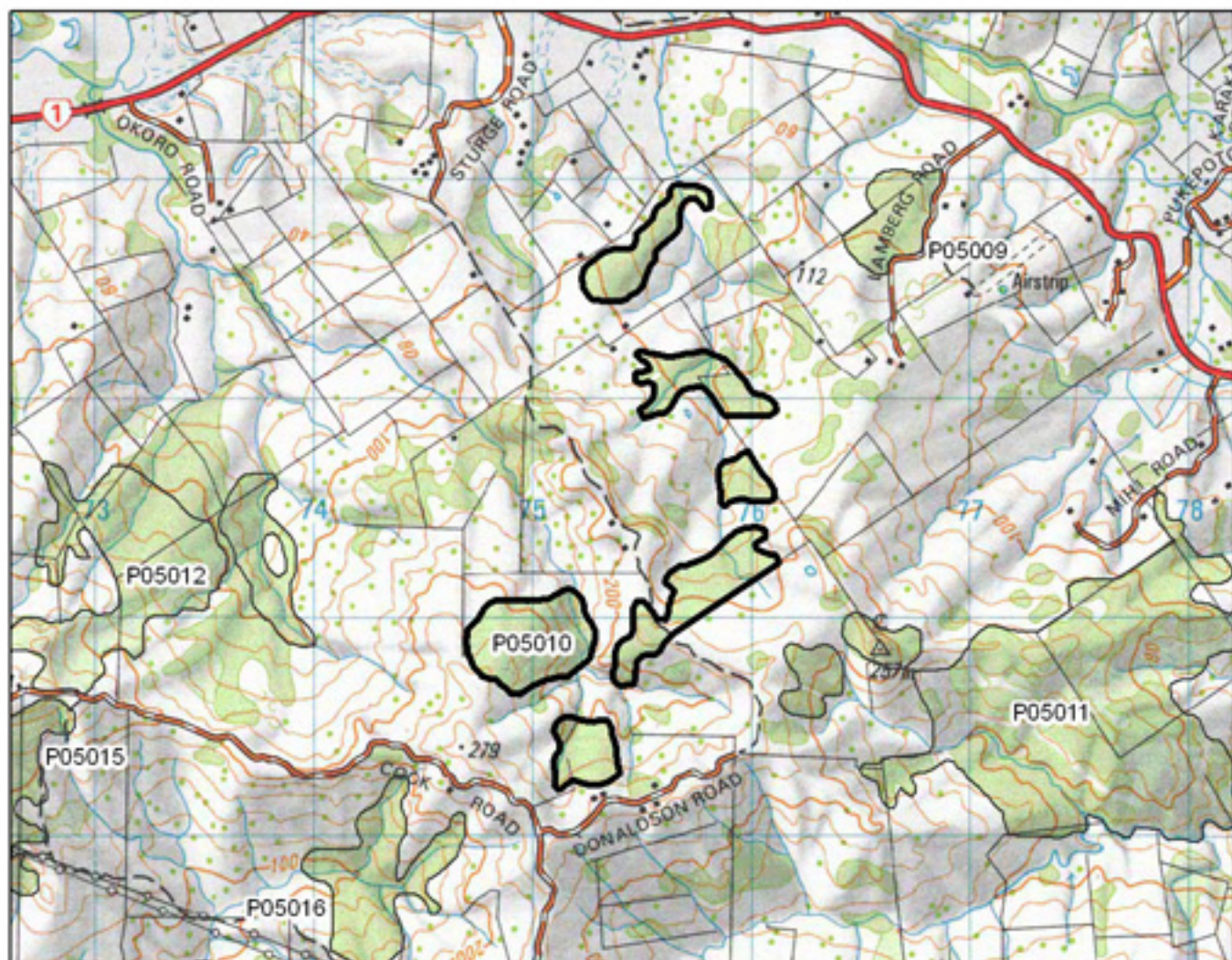


P05009 Lamberg Road Bush

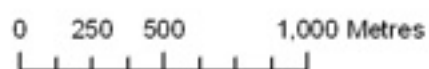


- S= Shrubland
- F= Forest
- W= Wetland
- E= Estuarine



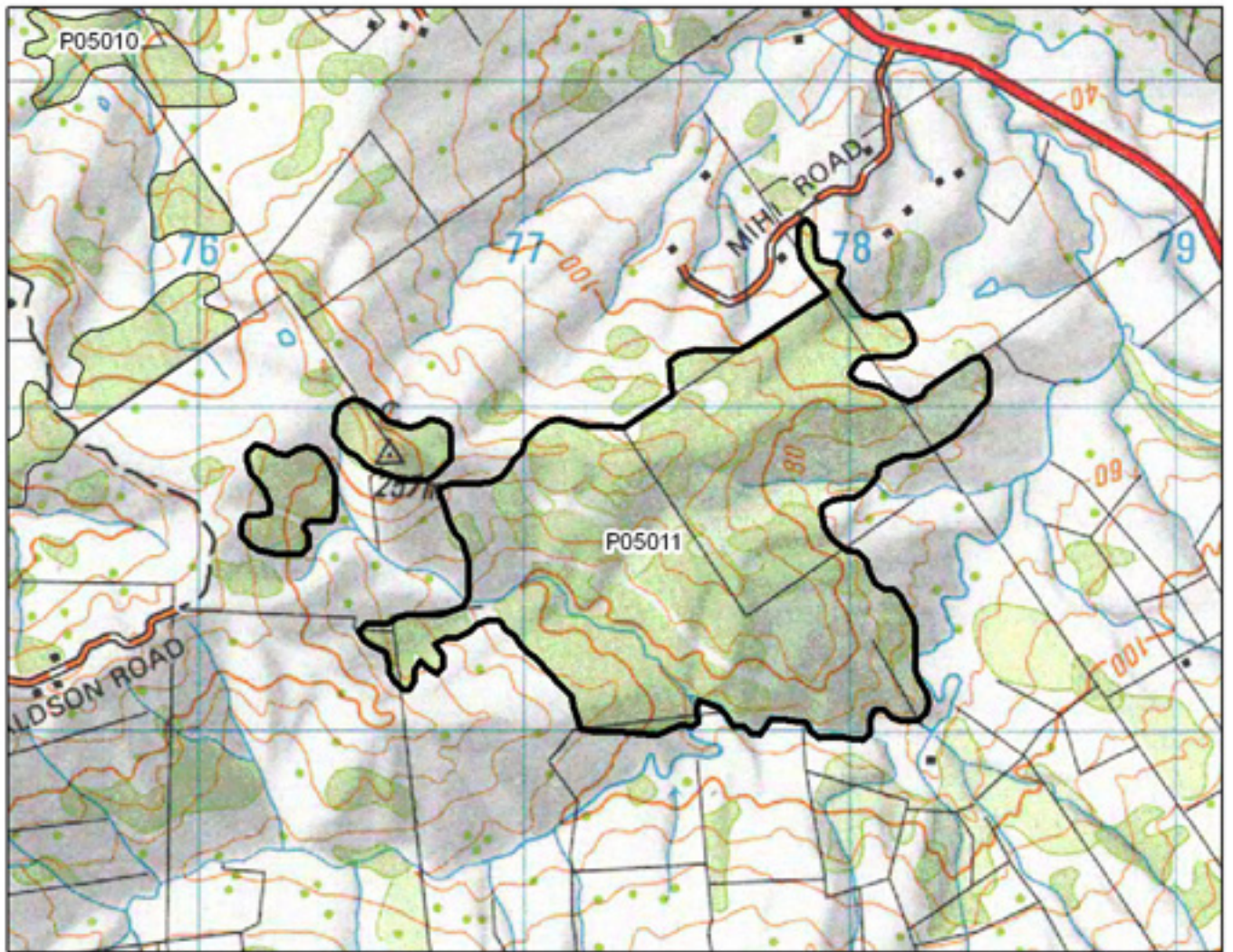


P05010 Donaldsons Road Bush



S= Shrubland
 F= Forest
 W= Wetland
 E= Estuarine

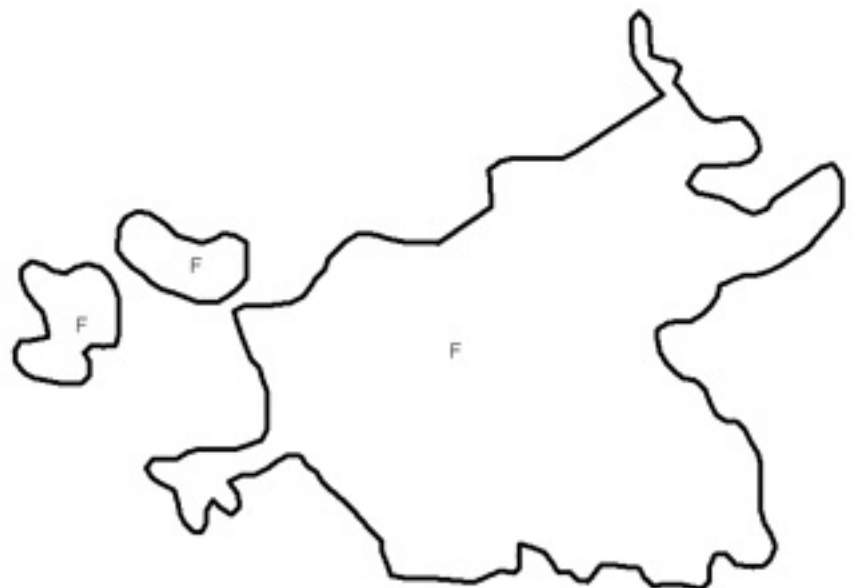


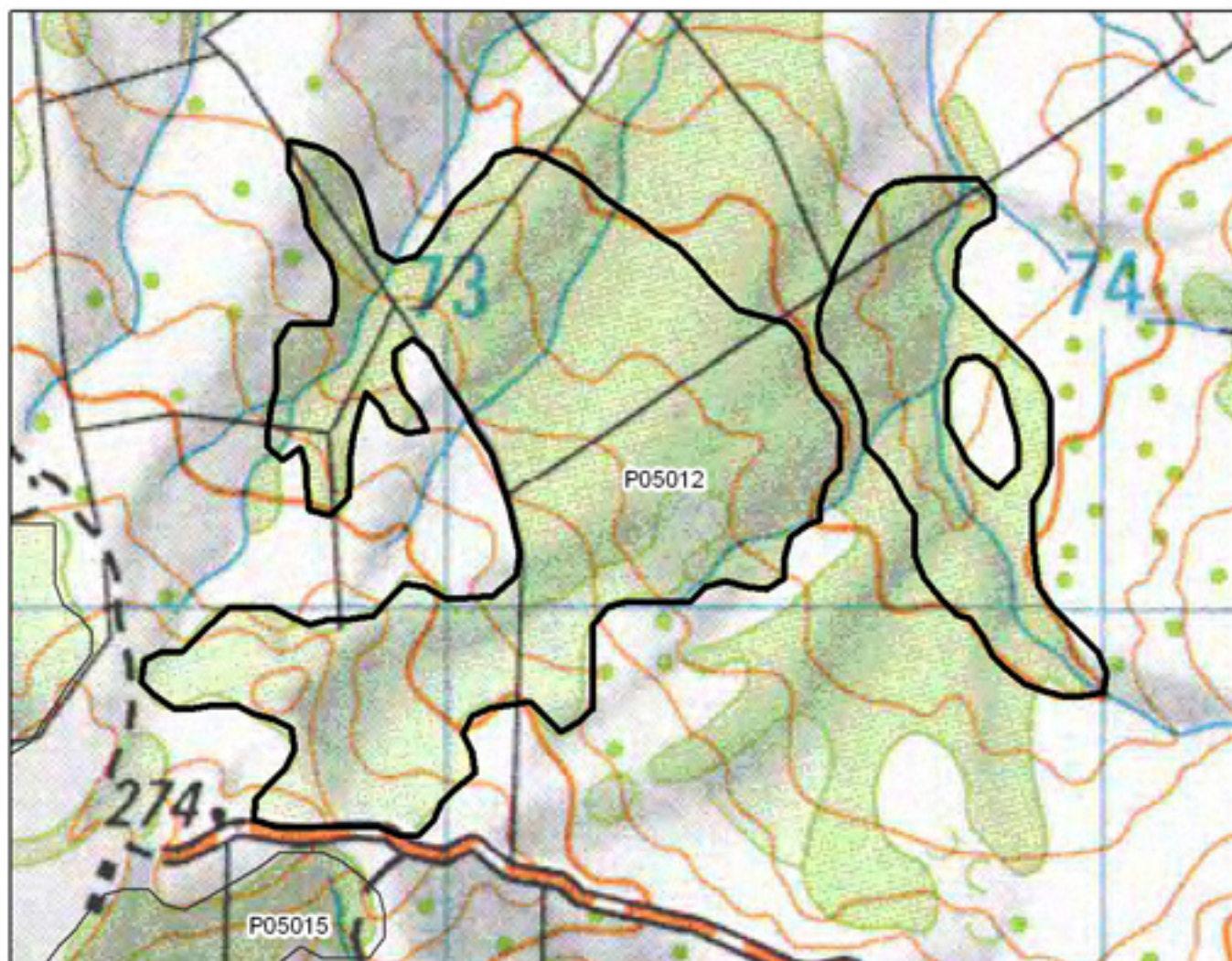


P05011 Mihi Road Bush

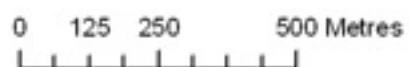


- S= Shrubland
- F= Forest
- W= Wetland
- E= Estuarine

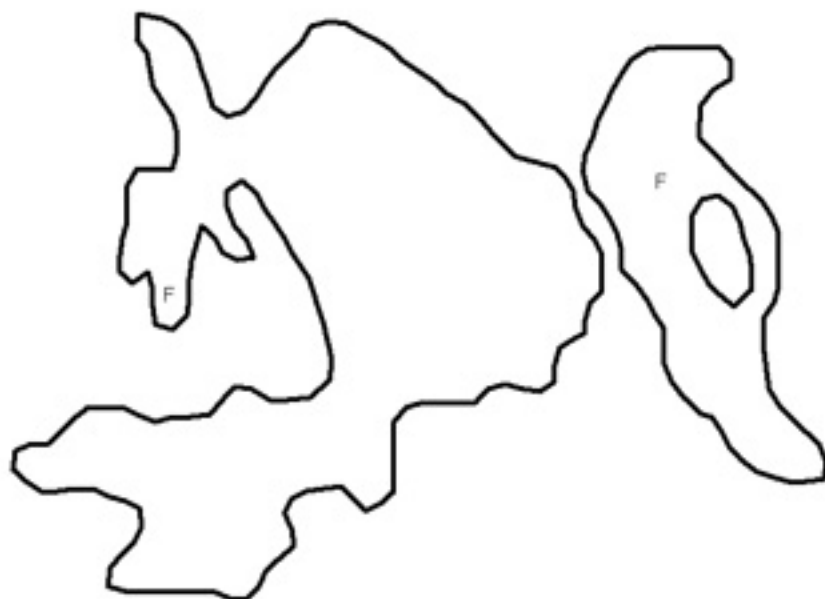


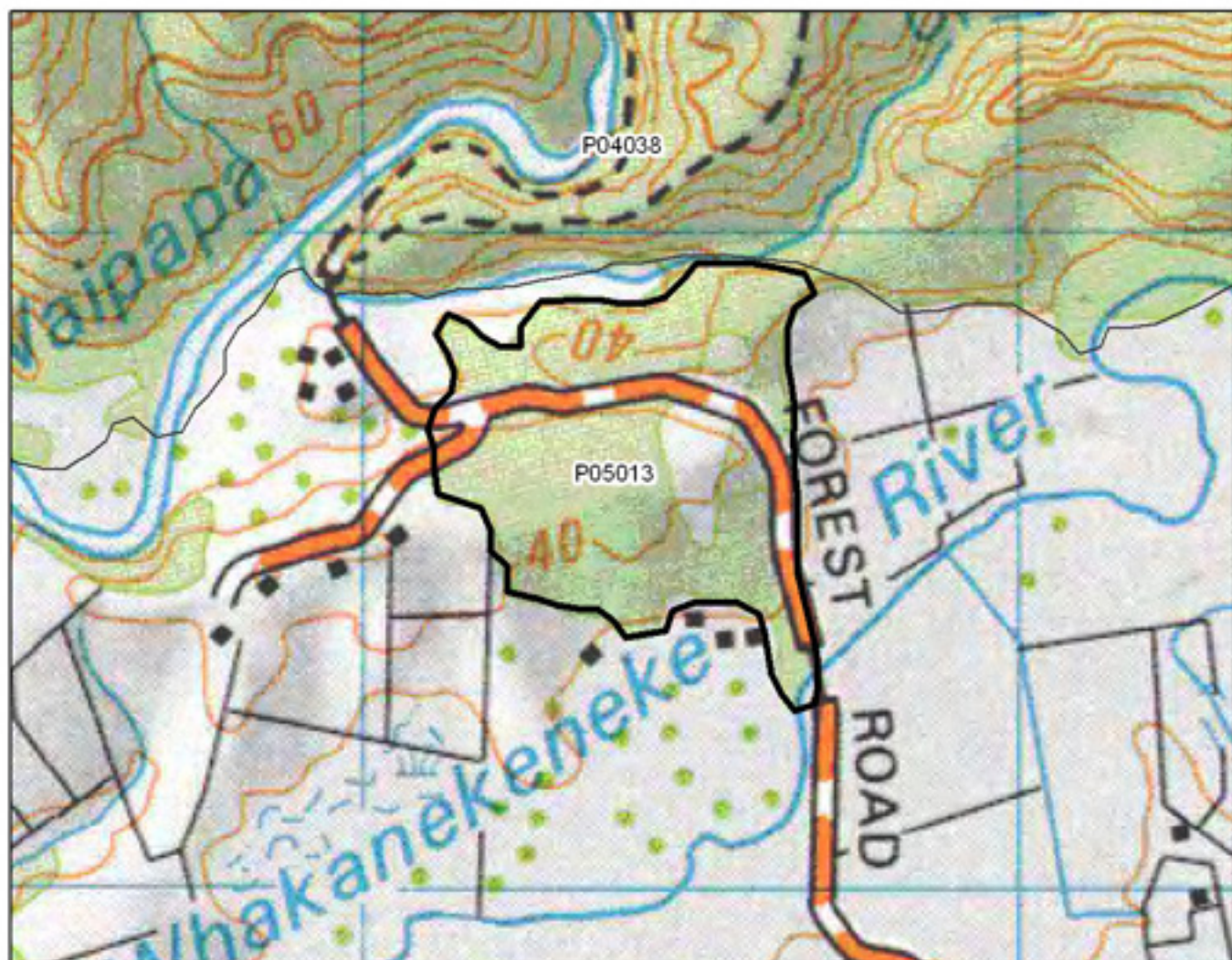


P05012 Okoro Stream Bush

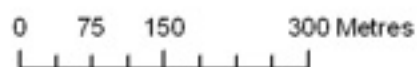


- S= Shrubland
- F= Forest
- W= Wetland
- E= Estuarine

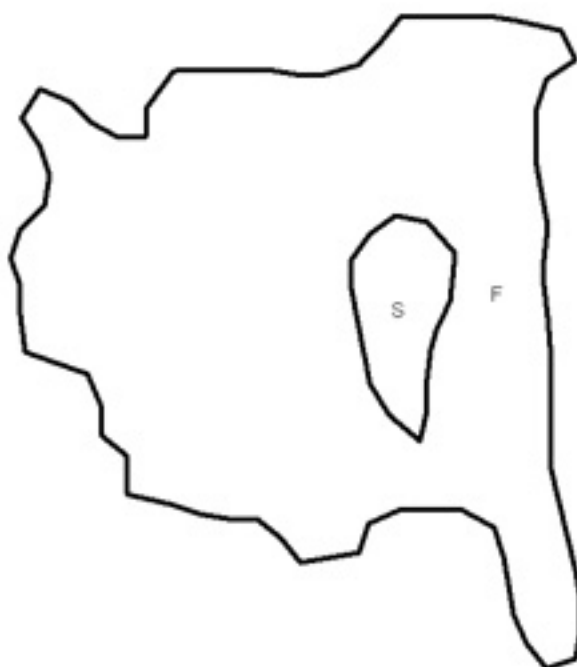


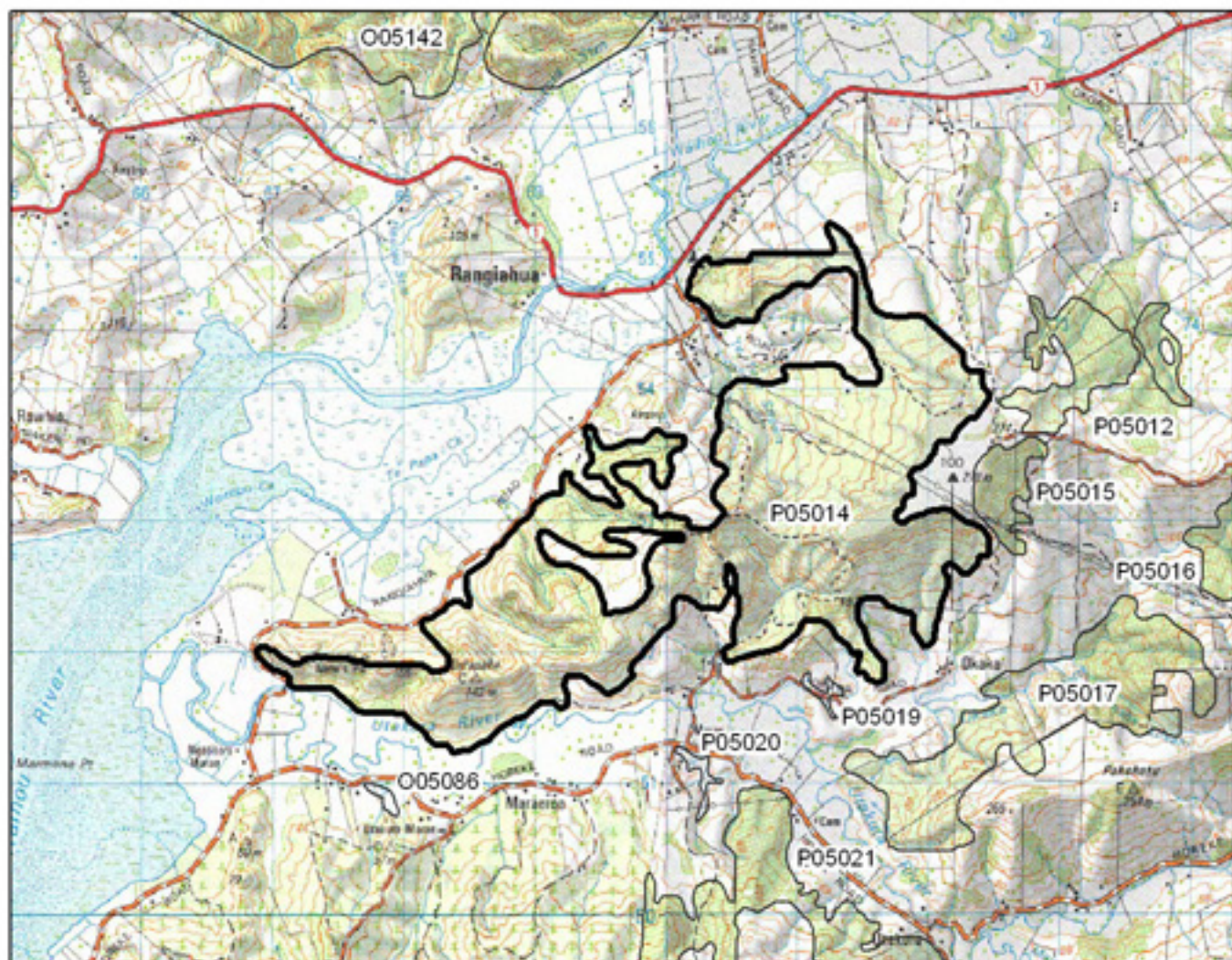


P05013 Forest Road Bush



- S= Shrubland
- F= Forest
- W= Wetland
- E= Estuarine

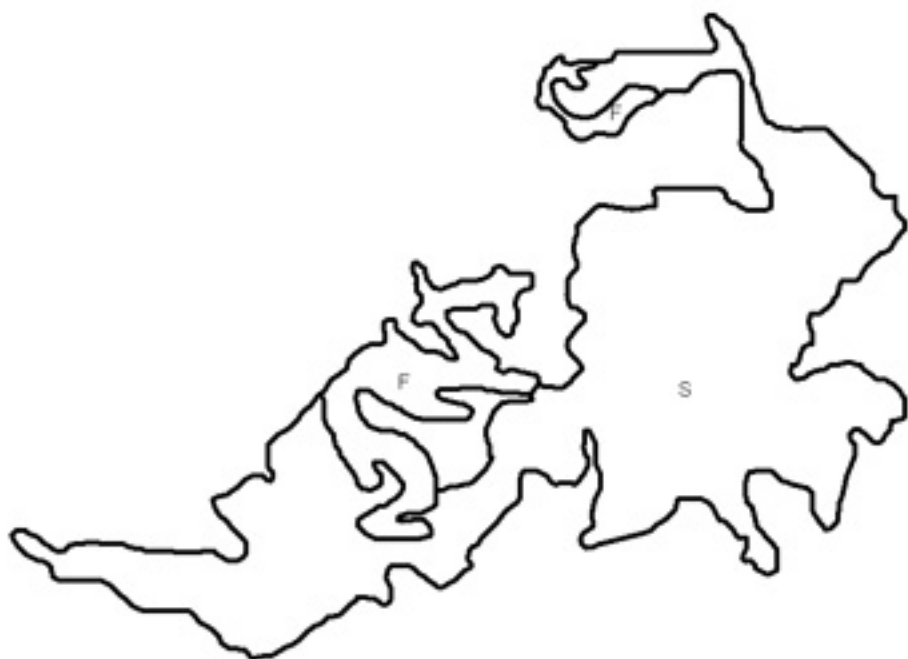


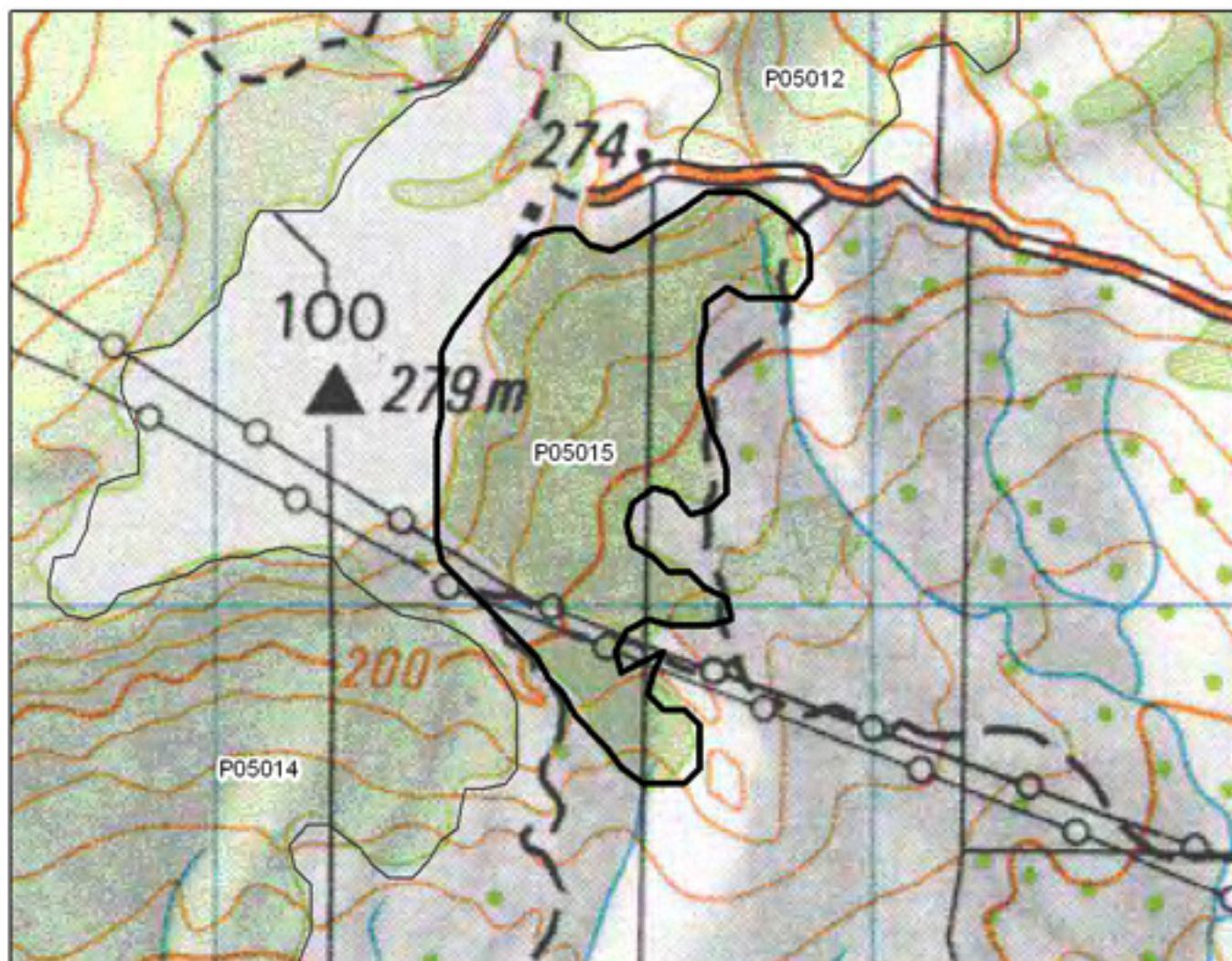


P05014 Te Toke Stream Shrubland

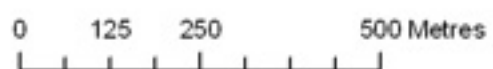
0 440 880 1,760 Metres

S= Shrubland
 F= Forest
 W= Wetland
 E= Estuarine



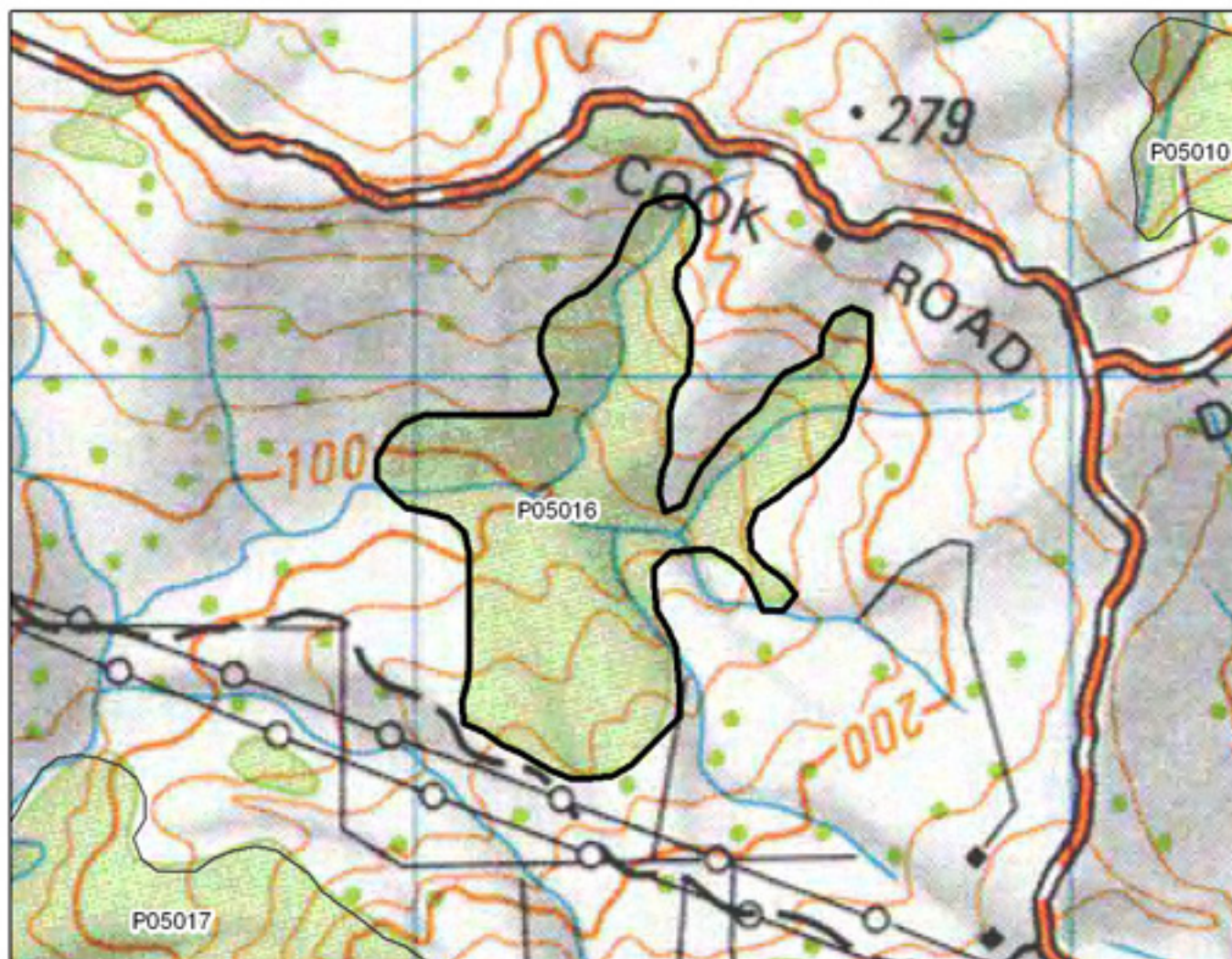


P05015 Cooks TV Block

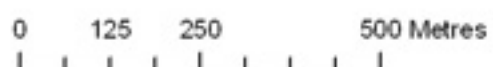


- S= Shrubland
- F= Forest
- W= Wetland
- E= Estuarine

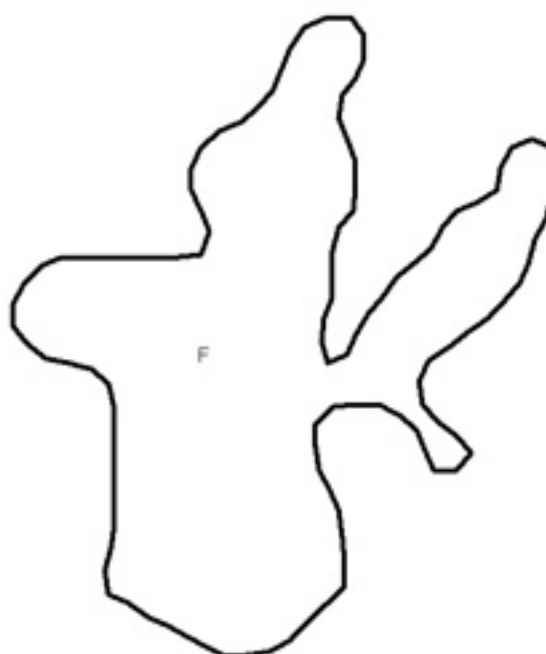


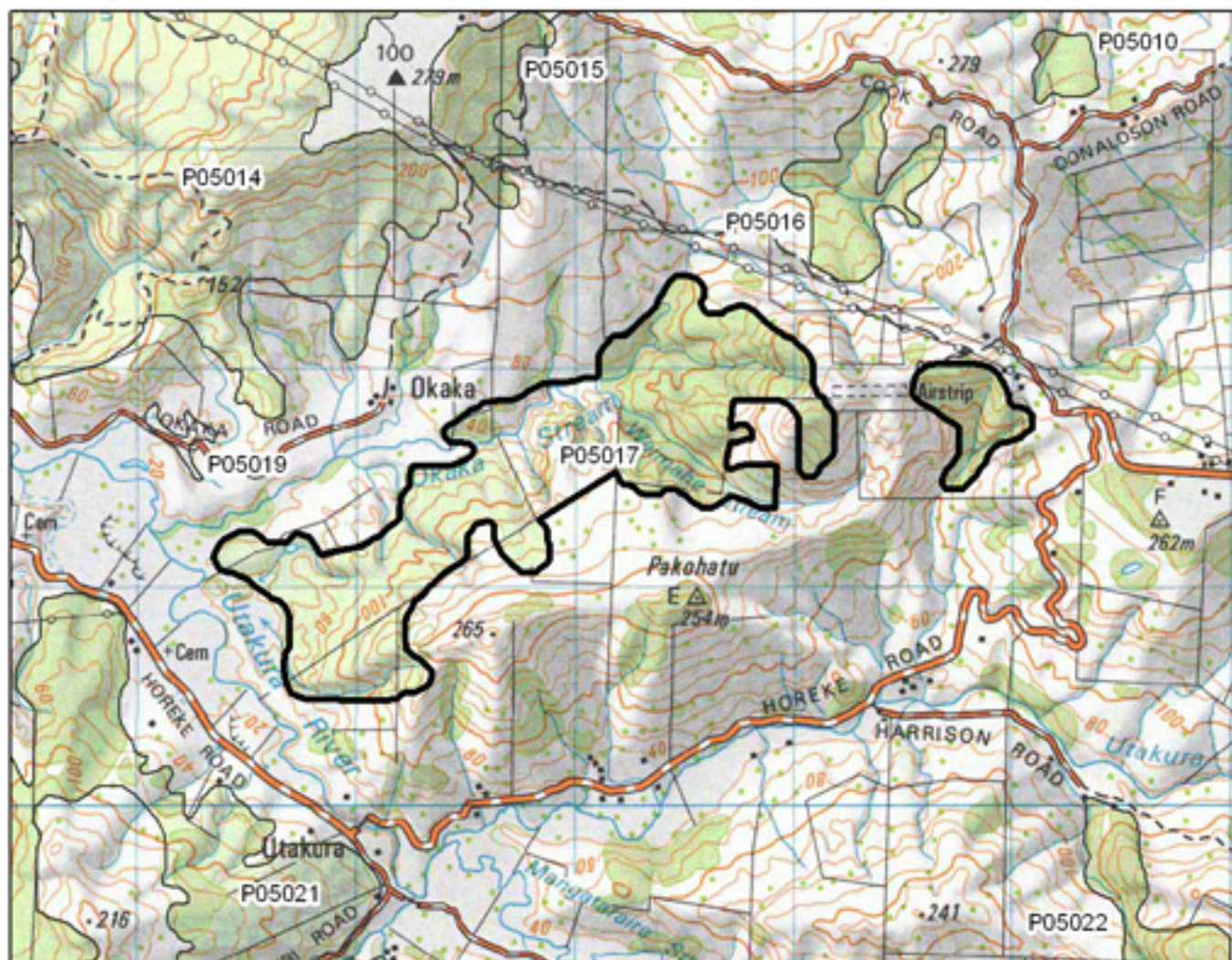


P05016 Cooks Road Bush No. B



- S= Shrubland
- F= Forest
- W= Wetland
- E= Estuarine





P05017 Cooks Airstrip Block



- S= Shrubland
- F= Forest
- W= Wetland
- E= Estuarine

