

MAIRE STREAM POND

Survey no. O05/050
Survey date 10 January 1995
Grid reference O05 349 583
Area 1 ha
Altitude c. 20 m asl



Maire Stream Pond O05/050

Each grid is 1000m x 1000m
and = 100 ha.

S = shrubland
F = forest
W = wetland
E = estuarine
D = duneland



Ecological unit

- (a) Constructed pond in gully
- (b) Raupo reedland on pond margin

Landform/geology

A pond in a valley surrounded by Mangakahia Complex sandstone hill country.

Vegetation

- (a) An artificial pond with a small amount of raupo, type (b) on the margins, surrounded by pasture.

Fauna

Not surveyed.

Significance

Potential waterbird habitat.

GROUNDNS – HAUMANGA RD BUSH

Survey no.	O05/051
Survey date	10 January 1995
Grid reference	O05 382 556
Area	4 ha
Altitude	40-80 m asl

Ecological unit

- (a) Taraire forest on moderate to steep hillslope (60%)
- (b) Kanuka-totara forest on moderate to steep hillslope (40%)

Landform/geology

Valley in dissected hill country on Mangakahia Complex sandstone.

Vegetation

- (a) Abundant tall taraire occurs in over half of this site with frequent emergent rimu and totara. Other species occurring are puriri, towai, rewarewa, kauri, nikau and emergent kahikatea.
- (b) There is also an area of secondary kanuka and totara forest with scattered puriri, kahikatea and towai. The understorey consists of kohekohe, mahoe, and ponga.

Fauna

Not surveyed.

Significance

A fenced forest remnant providing seasonal food source for the threatened kukupa and a link between Pareokawa and other sites at Pawarenga.



Grounds-Haumanga Rd Bush O05/051

Each grid is 1000m x 1000m
and = 100 ha.

S = shrubland
F = forest
W = wetland
E = estuarine
D = duneland

AWAROA RD BUSH

Survey no. O05/057
Survey date 10 January 1995
Grid reference O05 385 588, O05 386 588
Area 3 ha
Altitude 40-60 m asl

Ecological unit

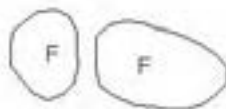
(a) Taraire forest on steep hillslope



Awaroa Rd Bush O05/057

Each grid is 1000m x 1000m
and = 100 ha.

- S = shrubland
- F = forest
- W = wetland
- E = estuarine
- D = duneland



Landform/geology

Dissected hill country on Mangakahia Complex sandstone.

Vegetation

Taraire is abundant in these two remnant areas divided by the highway. Totara, kahikatea, towai, puriri, rewarewa and nikau also occur.

Fauna

Not surveyed.

Significance

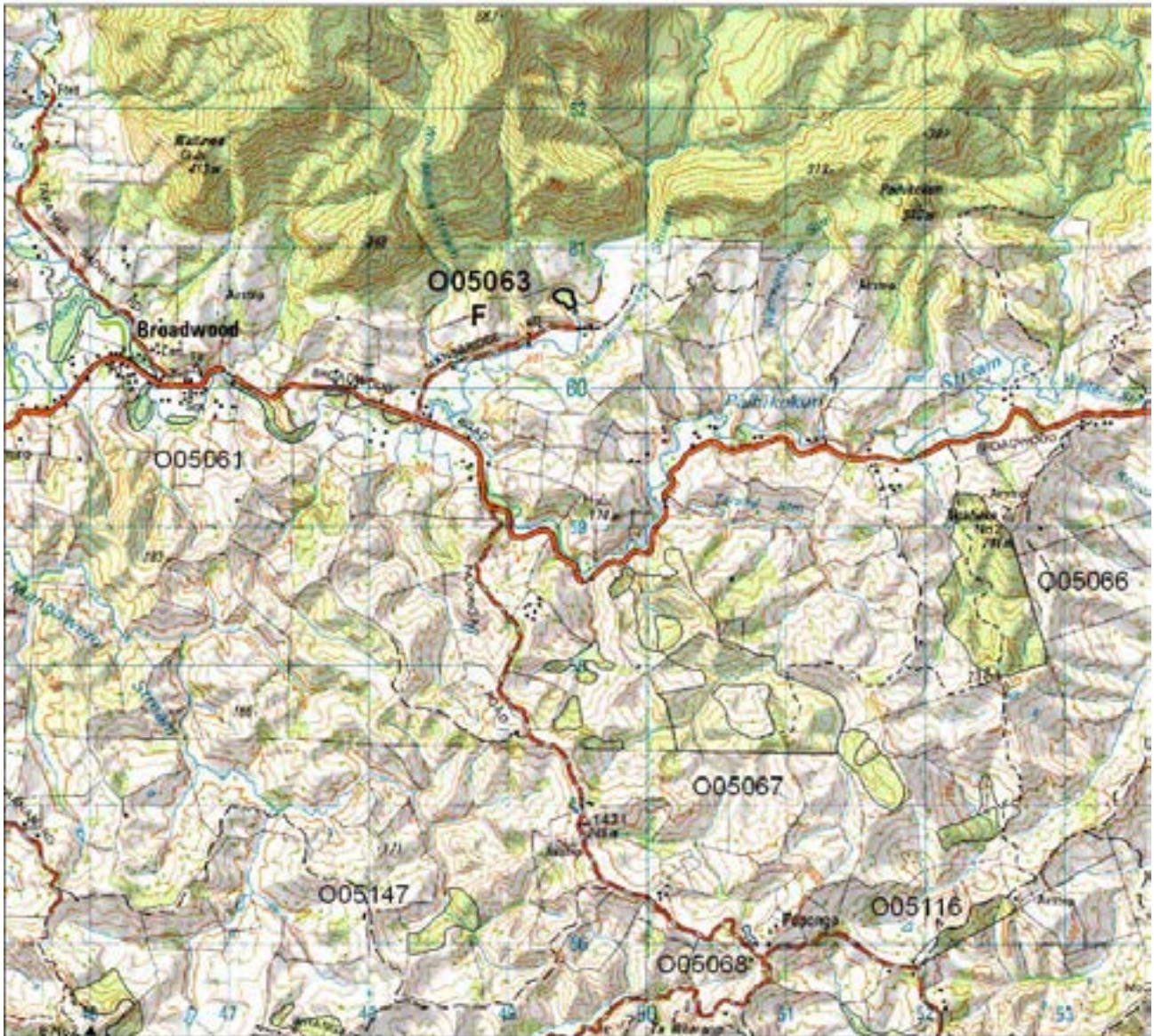
Potential seasonal food source for the threatened kukupa.

MANSBRIDGE SCENIC RESERVE

Survey no. O05/063
Survey date 20 February 1995
Grid reference O05 494 606
Area 1 ha
Altitude c.100 m asl

Ecological unit

(a) Taraire flood forest on alluvium



Mansbridge Scenic Reserve O05/063

Each grid is 1000m x 1000m
and = 100 ha
S = shrubland
F = forest
W = wetland
E = estuarine
D = duneland

Landform/geology

Valley alluvium with adjoining Mangakahia Complex sandstone hillside at Broadwood.

Vegetation

A small flood forest remnant with an open canopy in which taraire is abundant. Totara, kohekohe, titoki, kahikatea, towai and northern rata are present.

The understorey consists mainly of mistflower and small-leaved *Coprosma* species.

Fauna

Not surveyed.

Significance

Broadleaf flood forest is a priority habitat for protection within Northland; however, this site is small, degraded and requires fencing and weed eradication.

This site is a protected Scenic Reserve administered by the Department of Conservation.

PAPONGA POND

Survey no.	O05/068
Survey date	27 February 1995
Grid reference	O05 507 560
Area	1 ha
Altitude	c. 180 m asl

Ecological unit

- (a) Constructed pond
- (b) Harakeke-raupo reedland on pond margin

Landform/geology

Pond at the head of a valley surrounded by hills of Mangakahia Complex sandstone.

Vegetation

- (a) Artificial pond.
- (b) Harakeke and raupo occur on the pond margin.

Fauna

Pied shag (Sparse) and mallard.

Significance

Habitat for common waterbirds including a threatened species.

Only site record for type (b) in the Ecological District, but the size of this site and the extent of the vegetation limits its significance.



Paponga Pond O05/068

Each grid is 1000m x 1000m
and = 100 ha.

- S = shrubland
- F = forest
- W = wetland
- E = estuarine
- D = duneland



BEER BUSH

Survey no. O05/070
Survey date 28 February 1995
Grid reference O05 488 539
Area 18 ha
Altitude 100-140 m asl

Ecological unit

(a) Taraire secondary forest on hillslope



Beer Bush O05/070

Each grid is 1000m x 1000m
and = 100 ha.

S = shrubland
F = forest
W = wetland
E = estuarine
D = duneland

(b) Kahikatea-totara secondary forest on toeslope

Landform/geology

Dissected hill country on Mangakahia Complex sandstone.

Vegetation

(a) Taraire is abundant throughout most of this area with frequent towai. Puriri, pukatea, rewarewa, rimu, totara, northern rata, nikau and kauri also occur.

(b) In the lower part of the area, kahikatea and totara are common with rimu and kanuka occurring frequently. Rewarewa, towai, pukatea and nikau also occur.

Fauna

Not surveyed.

Significance

Potential seasonal food source for the threatened kukupa.

RUNARUNA SCENIC RESERVE

Survey no.	O05/073
Survey date	16 January 1995
Grid reference	O05 450 558, O05 444 555, O05 443 562, O05 450 563
Area	42 ha (17 ha forest, 25 ha shrubland)
Altitude	70-180 m asl

Ecological unit

(a) Towai secondary forest on hillslope

(b) Manuka shrubland on hillslope

(c) Kanuka/manuka shrubland on hillslope and in gully

(d) Kanuka-totara forest on hillslope

(e) Taraire secondary forest on hillslope

(f) Kahikatea-totara secondary forest on hillslope

Landform/geology

Dissected hill country running down to gentler slopes in the valley on Mangakahia Complex sandstone.

Vegetation

Four remnants.

(a) Towai is common with frequent kanuka and totara. Rimu and kahikatea are occasionally emergent over rewarewa, miro and taraire. Hinau, lancewood, and makamaka are also present.

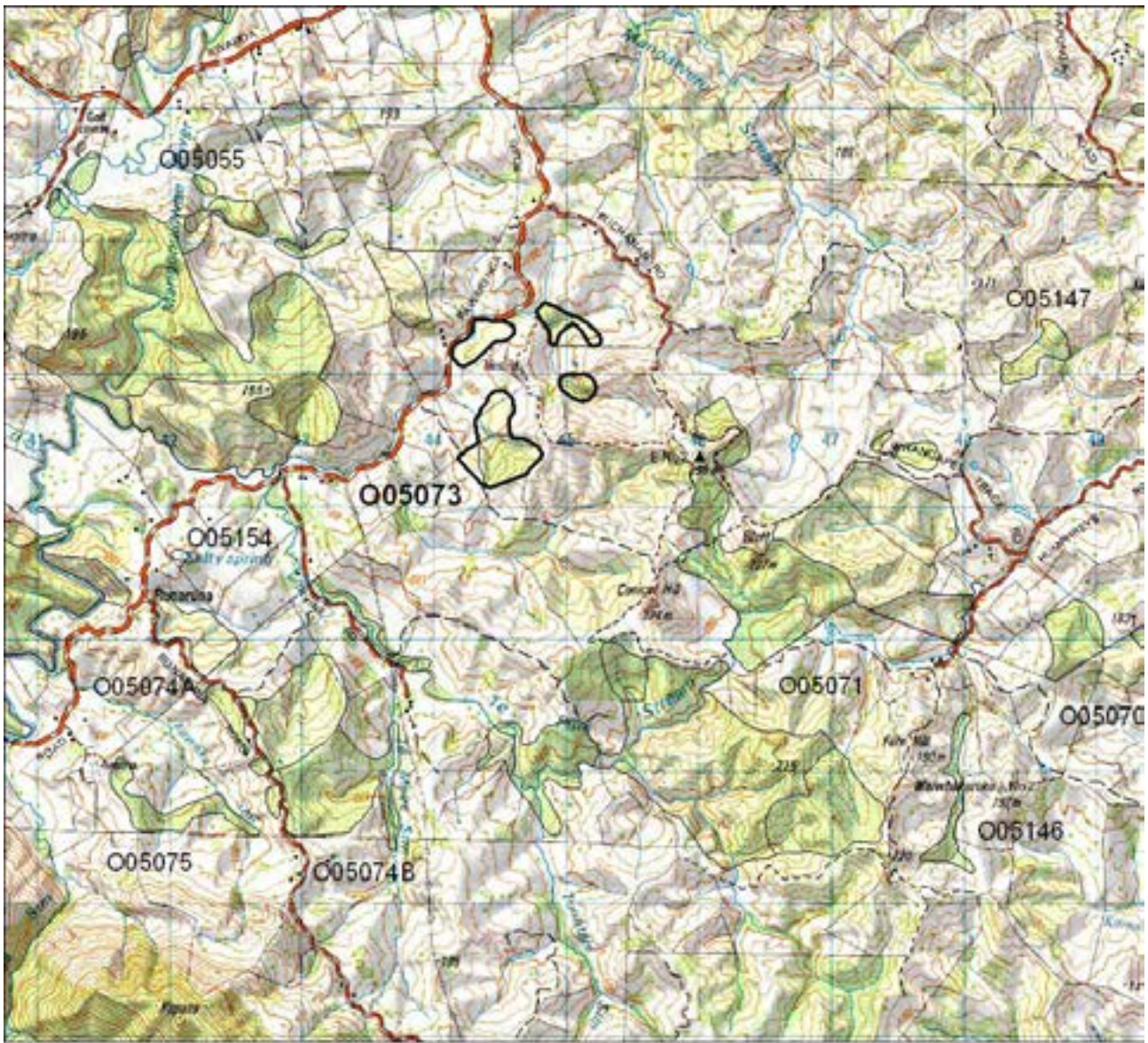
(b) On the margins is manuka 4-6 m tall with occasional towai and puriri.

The understorey contains mamangi, houhere, heketara, pigeonwood, and kiekie with occasional putaputaweta. The ground cover is sparse due to grazing.

Along the roadside to the north is an area of manuka shrubland with a small pocket of secondary podocarp.

(c) In gullies to the east kanuka/manuka shrubland is abundant.

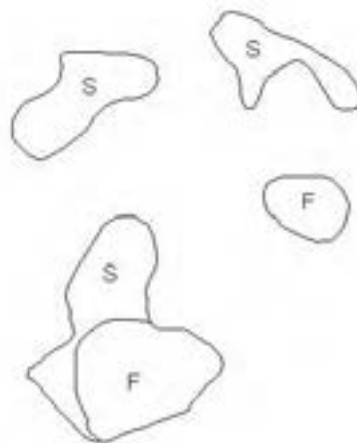
(d) Kanuka with totara occurs with occasional rewarewa.



Runaruna Scenic Reserve O05/073

Each grid is 1000m x 1000m
and = 100 ha.

- S = shrubland
- F = forest
- W = wetland
- E = estuarine
- D = duneland



(e) Taraire is common with frequent towai and occasional totara, rimu, pukatea, rewarewa, kahikatea and northern rata.

(f) A small area of kahikatea and totara is present with frequent manuka.

Fauna

Kukupu (Gradual Decline) and kauri snail (Gradual Decline).

Significance

Habitat for the threatened kukupa and kauri snail and some riparian protection along watercourses. However, the fragmented nature of this site does not warrant Level 1 status.

The Department of Conservation administers 8 ha of this site as Scenic Reserve.

RUNARUNA RD SHRUBLAND

Survey no. O05/074A
Survey date 16 January 1995
Grid reference O05 422 540
Area 20 ha
Altitude 80-140 m asl

Ecological unit

(a) Manuka shrubland on hillslope

Landform/geology

Dissected hill country on Mangakahia Complex sandstone.

Vegetation

Manuka shrubland 2-3 m tall.

Fauna

Not surveyed.

Significance

NI brown kiwi have been found in similar habitats. Survey recommended.



Runaruna Rd Shrubland O05/074A

Each grid is 1000m x 1000m
and = 100 ha.

- S = shrubland
- F = forest
- W = wetland
- E = estuarine
- D = duneland

IRVINE RD BUSH

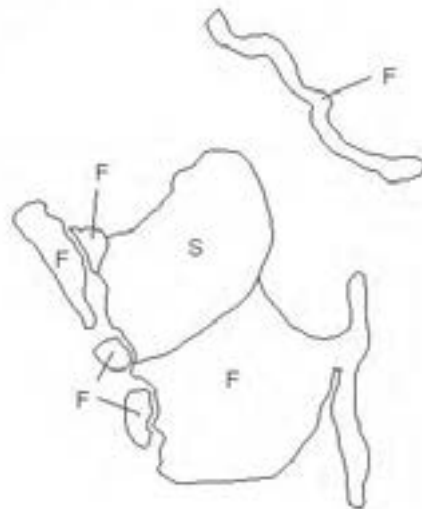
Survey no. O05/074B
 Survey date 16 January 1995
 Grid reference O05 424 534, O05 427 527, O05 426 530,
 O05 435 541, O05 431 531
 Area 112 ha (72 ha forest, 40 ha shrubland)
 Altitude 60-180 m asl



Irvine Rd Bush O05/074B

Each grid is 1000m x 1000m
and = 100 ha.

- S = shrubland
- F = forest
- W = wetland
- E = estuarine
- D = duneland



Ecological unit

- (a) Kahikatea-totara forest on hillslope
- (b) Kahikatea-taraire forest on hillslope
- (c) Taraire forest on hillslope
- (d) Kanuka shrubland on hillslope

Landform/geology

Dissected hill country on Mangakahia Complex sandstone, including some headwater catchments, and with alluvial flats in the Te Puia Stream Valley.

Vegetation

- (a) On the western side of Runaruna Rd kahikatea and totara forest occurs in the northern remnant. Towai is frequent, and puriri, nikau, pukatea, kauri, rimu, rewarewa, emergent northern rata and taraire are occasional.
- (b) Moving south along this road to the most southern remnant, kahikatea and taraire are common in the canopy. Totara is frequent and towai, puriri, rimu, rewarewa and pukatea are occasional.
- (c) Taraire occurs in the main forested area with frequent kahikatea and towai. Nikau, rimu and totara are occasional.
- (d) The main block of shrubland is kanuka with occasional kahikatea, totara and puriri. The regeneration is scattered and the canopy discontinuous. The understorey contains tree ferns, small-leaved *Coprosma* species, rasp fern and mistflower, and appears heavily grazed.

Fauna

Not surveyed. Habitat suitable for NI brown kiwi (Serious Decline), which have been reported in the adjacent area and are highly likely to be present.

Significance

A large, diverse area with riparian and catchment values.

Further survey recommended to establish the full ecological significance of this site.

PANGURU BUSH REMNANT

Survey no.	O05/093
Survey date	28 June 1994
Grid reference	O05 462 477
Area	32 ha (16 ha forest, 16 ha shrubland)
Altitude	40-190 m asl

Ecological unit

- (a) Towai forest on hillslope (70%)
- (b) Kanuka/manuka-totara forest on hillslope (30%)

Landform/geology

This small secondary forest remnant occurs on dissected hill country underlain by Mangakahia Complex sandstone.

Vegetation

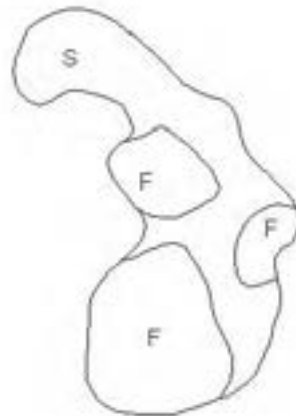
Part of a partial link between the large forest of the Warawara tract and the moderate sized remnants associated with the Tapuwae Forest. Many of the gaps



Panguru Bush Remnant O05/093

Each grid is 1000m x 1000m
and = 100 ha

- S = shrubland
- F = forest
- W = wetland
- E = estuarine
- D = duneland



previously occupied by pasture are now in *Pinus radiata* and will provide a linkage between remnants assisting the movement of species such as the threatened NI brown kiwi and NI tomtit.

(a) Most of the remnant is towai which is common. Taraire, kanuka/manuka, puriri, and kahikatea are frequent with occasional totara, hinau, mamangi, rewarewa, karaka, rimu, pukatea and emergent northern rata.

(b) Kanuka/manuka is abundant with totara common in the remainder of the site. Mamangi is frequent with occasional kahikatea, tanekaha, towai, taraire, puriri and mamaku.

Fauna

Not surveyed.

Significance

Close proximity to larger forest tracts and contiguous with plantation forest implies a probable linkage and refuge function, especially important during the harvest of adjoining pines.

PUKETAWA RD BUSH

Survey no.	O05/095
Grid reference	O05 464 492, O05 465 484
Area	65 ha (51 ha forest, 14 ha shrubland)
Survey date	27 June 1994
Altitude	40-140 m asl

Ecological unit

(a) Towai forest on hillslope (40%)

(b) Kanuka/manuka forest on hillslope (40%)

(c) Taraire-towai forest in valley and on hillslope (10%)

Landform/geology

It lies on dissected hill country underlain by Mangakahia Complex sandstone.

Vegetation

A forest remnant forming part of the chain which helps to link Warawara Forest (Ahipara Ecological District) to other large forests to the north and east. The gaps in this chain are progressively being filled in by exotic plantation forestry and small native enclaves such as this will become increasingly important as refuges, especially during harvest.

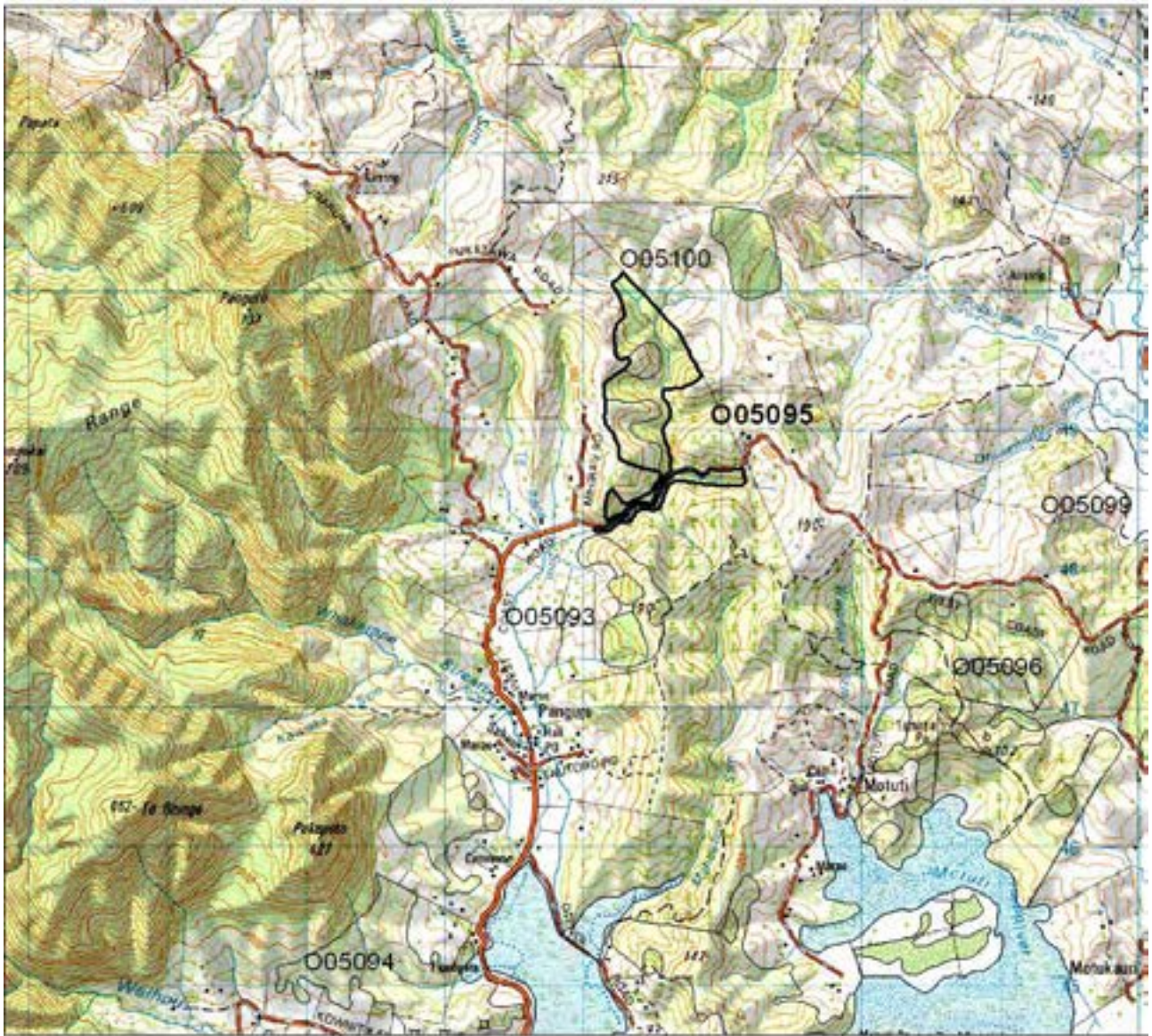
(a) Towai forest with frequent puriri, kahikatea, tanekaha, totara, kanuka, nikau and occasional matai, rimu, tawa, hinau, pukatea and emergent northern rata.

(b) Kanuka/manuka forest with frequent kahikatea and occasional totara and tanekaha.

(c) Taraire and towai forest with frequent kahikatea, rewarewa, puriri, kanuka, nikau and tawa. Kohekohe, houhere, pukatea, miro, hinau and mamaku are occasional.

Fauna

Not surveyed.



Puketawa Rd Bush 005/095

Each grid is 1000m x 1000m
and = 100 ha

- S = shrubland
- F = forest
- W = wetland
- E = estuarine
- D = duneland



Significance

Forms a linkage and refuge function between forests.

Further survey is recommended to establish the full ecological significance of this site.

MIHIRAU BUSH

Survey no. O05/100
Survey date 28 June 1994
Grid reference O05 471 502
Area 24 ha
Altitude 60-190 m asl

Ecological unit

- (a) Kanuka/manuka forest on hillslope
- (b) Kahikatea-puriri-towai forest on hillslope
- (c) Taraire-towai forest on hillslope

Landform/geology

Dissected hill country underlain by Mangakahia Complex sandstone.

Vegetation

A relatively small forest remnant with a mix of cutover and secondary forest associations.

- (a) Kanuka/manuka forest with occasional towai, totara, houhere, mamangi and kahikatea.
- (b) Kahikatea, puriri and towai are common in the canopy with frequent kanuka and nikau and occasional totara, kohekohe, pukatea, rimu and rewarewa.
- (c) Taraire and towai are also common with frequent rewarewa and puriri and occasional miro, pukatea, rimu, northern rata, tawa and nikau.

Fauna

Not surveyed.

Significance

This site is completely surrounded by plantation forestry which will be adding to its value as an indigenous forest enclave within the newly planted link being formed through to the north end of the Tapuwae Forest tract. This planted forest should become a valuable habitat and means of dispersal for several species, including NI brown kiwi.

Only site in the Ecological District where type (b) has been recorded.



Mihirau Bush O05/100

Each grid is 1000m x 1000m
and = 100 ha.

- S = shrubland
- F = forest
- W = wetland
- E = estuarine
- D = duneland

TE KONOKE BUSH

Survey no. O05/121
 Survey date 20 June 1994
 Grid reference O05 590 505
 Area 12 ha
 Altitude 30-180 m asl

Ecological unit

(a) Tanekaha-kanuka/manuka-totara forest on hillslope (15%)



Te Konoke Bush O05/121

Each grid is 1000m x 1000m
and = 100 ha.

- S = shrubland
- F = forest
- W = wetland
- E = estuarine
- D = duneland

(b) Taraire-towai forest on hillslope (85%)

Landform/geology

Underlain by Mangakahia Complex sandstone.

Vegetation

A small cutover, secondary forest remnant.

(a) Tanekaha is abundant with common kanuka/manuka and totara. Towai is frequent with occasional kohekohe, puriri and rewarewa.

(b) This site is dominated by a taraire and towai association with frequent tanekaha, totara, rimu, puriri and kahikatea. Occasional species include miro, rewarewa, kohekohe, matai and emergent kahikatea, northern rata and rimu.

Fauna

Common forest birds.

Significance

Although small and largely cutover in nature, this site retains an emergent podocarp element.

Only site for type (a) recorded in the Ecological District.

Further surveying is required to establish further ecological significance.



Mudgeway Rd Bush O05/126

Each grid is 1000m x 1000m
and = 100 ha

- S = shrubland
- F = forest
- W = wetland
- E = estuarine
- D = duneland

MUDGEWAY RD BUSH

Survey no.	O05/126
Survey date	10 June 1994
Grid reference	O05 642 571
Area	12 ha
Altitude	60-150 m asl

Ecological unit

(a) Puriri-taraire-towai forest on hillslope

Landform/geology

It is situated on dissected hill country underlain by Mangakahia Complex sandstone.

Vegetation

A small secondary cutover remnant and an outlier of the Omahuta Forest tract, exhibiting a diversity of forest species. Puriri, taraire and towai are common in the canopy with frequent kahikatea, totara, and titoki and occasional tawa, rimu, pukatea, kohuhu, nikau, rewarewa and kawaka.

Fauna

Not surveyed.

Significance

The close proximity of a large forest tract greatly improves the potential ecological value of this remnant which is also notable for its diversity of canopy species.

UPPER MANGAWERO STREAM TRIBUTARY REMNANT

Survey no.	O05/147
Survey date	17 July 1995
Grid reference	O05 485 561
Area	11 ha
Altitude	120-160 m asl

Ecological unit

(a) Kahikatea-kanuka-taraire-totara forest on hillslope

Landform/geology

Hill country of Mangakahia Complex sandstone, bordering on siliceous mudstone in the east.

Vegetation

A podocarp-broadleaf remnant of kahikatea, kanuka, taraire, and totara with occasional puriri, rimu and towai. The surrounding area is being planted in pines.

Fauna

Not surveyed.

Significance

Riparian protection and potential seasonal food source for the threatened kukupa.

Kahikatea-kanuka-taraire-totara forest is unrecorded elsewhere in the Ecological District; however, further survey required to establish the full ecological significance of this site.



Upper Mangawero Stream Tributary Remnant O05/147

Each grid is 1000m x 1000m
and = 100 ha

- S = shrubland
- F = forest
- W = wetland
- E = estuarine
- D = duneland

WHAKAOMA/HURAUNUI STREAM SECONDARY FOREST REMNANT

Survey no.	O05/150
Survey date	3 May 1995
Grid reference	O05 630 550
Area	11 ha
Altitude	20-60 m asl



Whakaoma/Huraunui Stream Secondary Forest Remnant O05/150

Each grid is 1000m x 1000m
and = 100 ha

- S = shrubland
- F = forest
- W = wetland
- E = estuarine
- D = duneland

Ecological unit

- (a) Kanuka/manuka shrubland on gentle hillslope
- (b) Totara secondary forest on gentle hillslope

Landform/geology

Dissected hill country and valley underlain by Mangakahia Complex mudstone.

Vegetation

A small secondary forest remnant.

- (a) Kanuka/manuka shrubland with occasional totara, kahikatea, tanekaha and rimu.
- (b) Totara forest with frequent kanuka and occasional kahikatea, rimu and taraire.

Fauna

Not surveyed.

Significance

This site provides a water and soil protection function.

KAHIKATOA RD POND

Survey no. O05/153

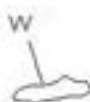
Survey date 14 January 1994



Kahikatoa Rd Pond O05/153

Each grid is 1000m x 1000m
and = 100 ha

- S = shrubland
- F = forest
- W = wetland
- E = estuarine
- D = duneland



Grid reference O05 610 555
Area 1 ha
Altitude 40 m asl

Ecological unit

Constructed pond in gully

Landform/geology

Located at a fault contact between Mangakahia Complex sandstone and Motukaraka Facies indurated sandstone and mudstone.

Vegetation

The pond has steep sides with raupo, harakeke, ti kouka, mamaku, *Coprosma robusta*, kowhai, pampas, willow, *Juncus* and *Carex* spp., pines and eucalypts and other exotic trees.

Fauna

Common waterbirds.

Significance

Habitat for waterbirds.

KOUTU SHRUBLAND

Survey no. O06/011
Survey date 5 May 1994
Grid reference O06 484 366, O06 485 365
Area 5 ha
Altitude 10 m asl

Ecological unit

Manuka shrubland on marine terrace

Landform/geology

A small shrubland remnant on marine-cut terrace of Mangakahia Complex siliceous mudstone.

Vegetation

Strongly manuka dominant with occasional gorse and mamaku. *Gleichenia dicarpa* occurs in the understorey with *Coprosma* sp. and mapou.

Fauna

A dense population of NI fernbird (Sparse) was recorded by the New Zealand Wildlife Service in 1978, but the area has since undergone a reduction in area of almost 90%.

Significance

While fernbird are still likely to be present and may occupy adjoining gorse clad hills, the value of the site has been greatly reduced by the reduction of overall area.

The Department of Conservation administers one hectare of Recreation Reserve within this site.



Koutu Shrubland O06/011

Each grid is 1000m x 1000m
and = 100 ha.

- S = shrubland
- F = forest
- W = wetland
- E = estuarine
- D = duneland